

introducing
MONTECITO

NGC nafees
walls • floors • fabrics

THIBAUT











F981304



F981303



F981302



F981301



F981300



F981314



F981313



F981312



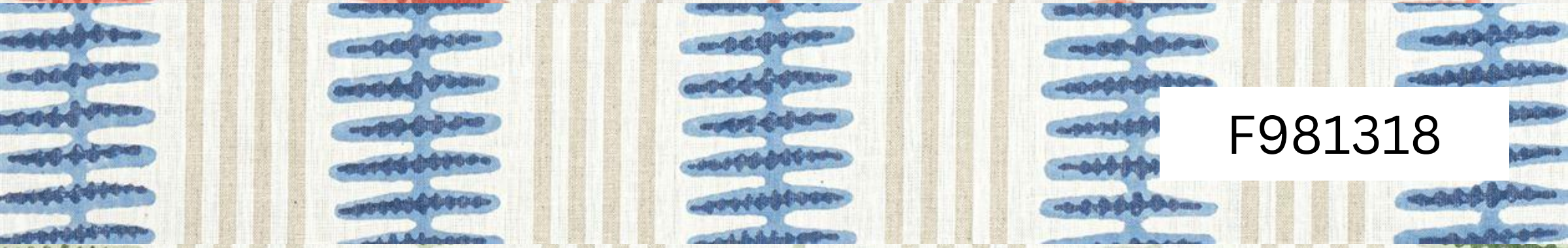
F981311



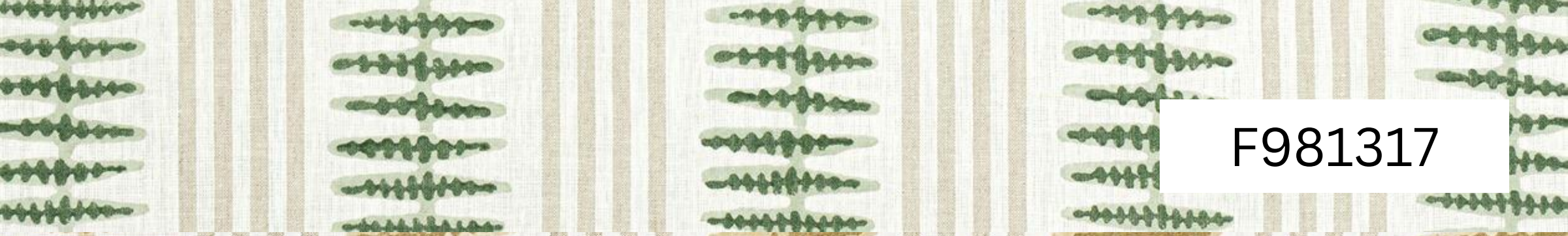
F981310



F981319



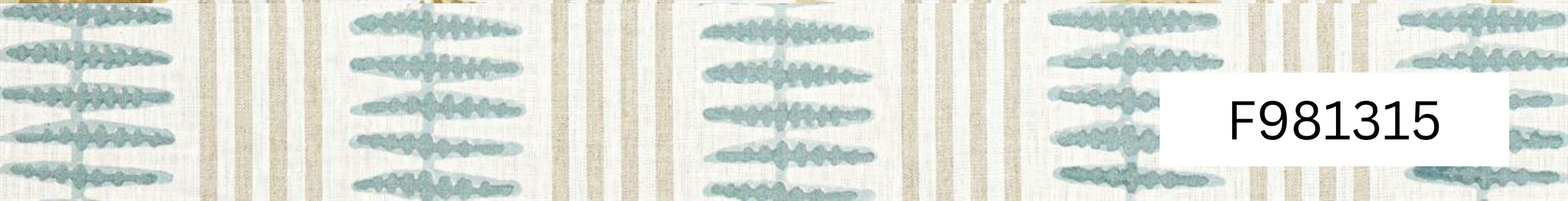
F981318



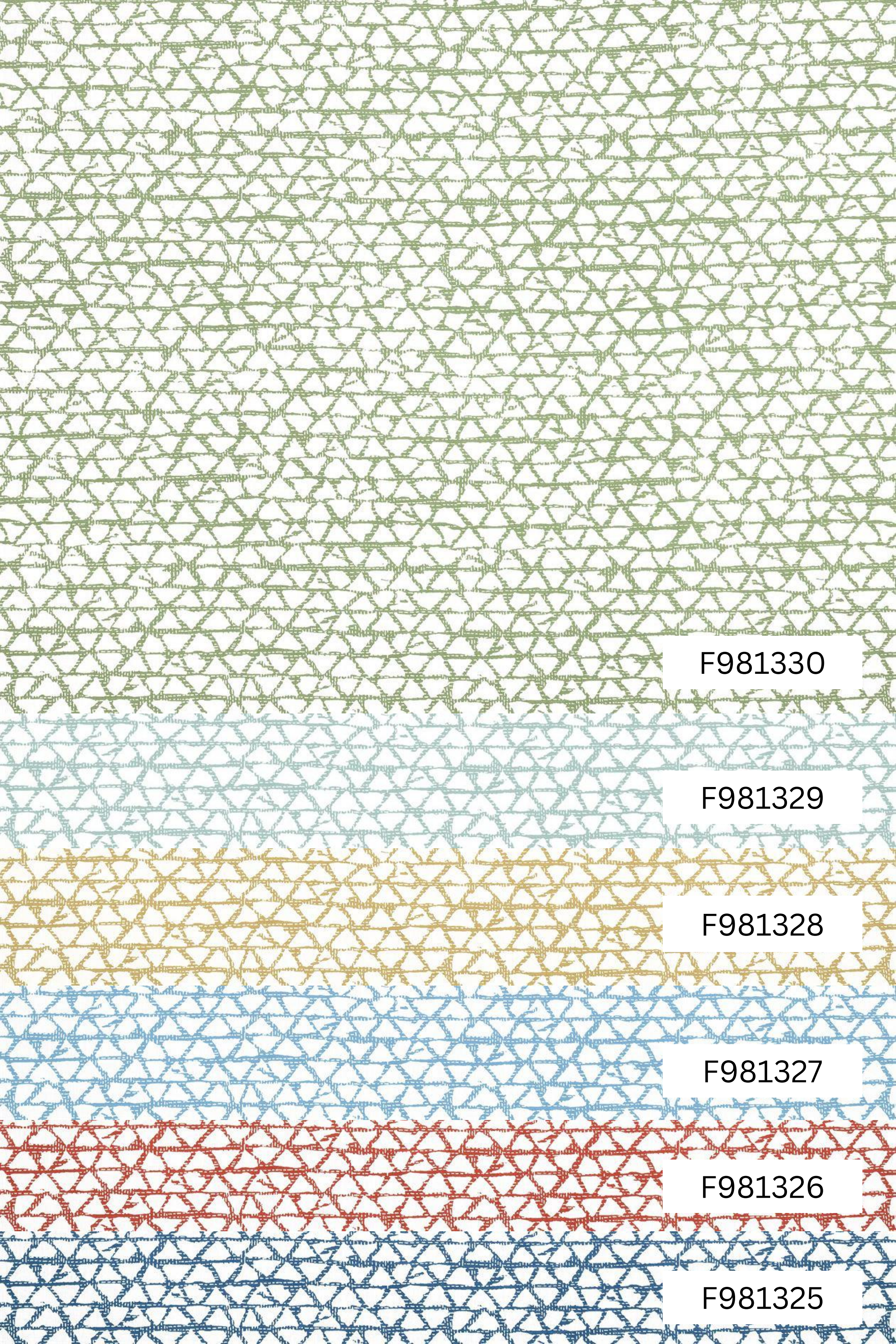
F981317



F981316



F981315



F981330

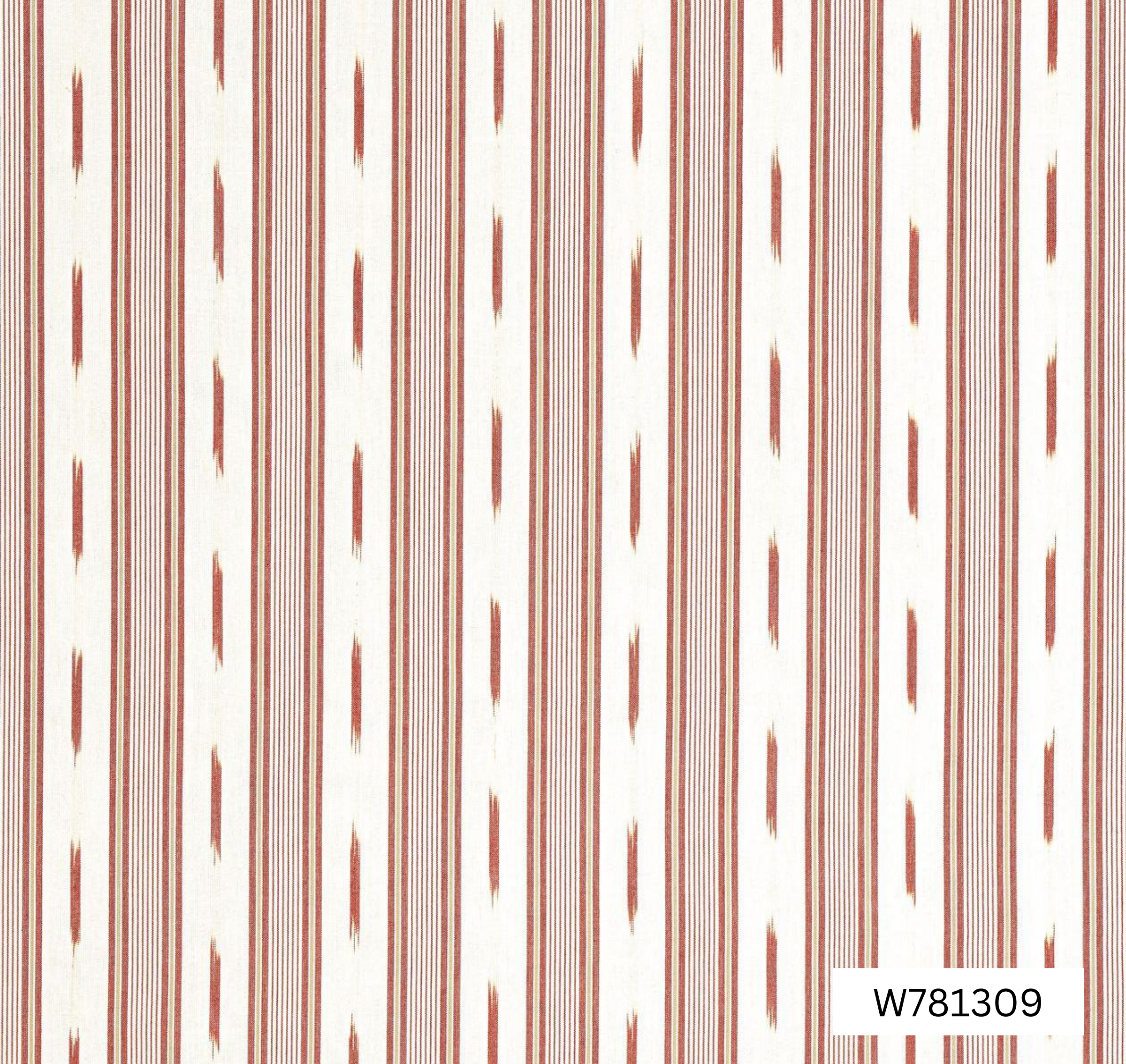
F981329

F981328


F981327

F981326

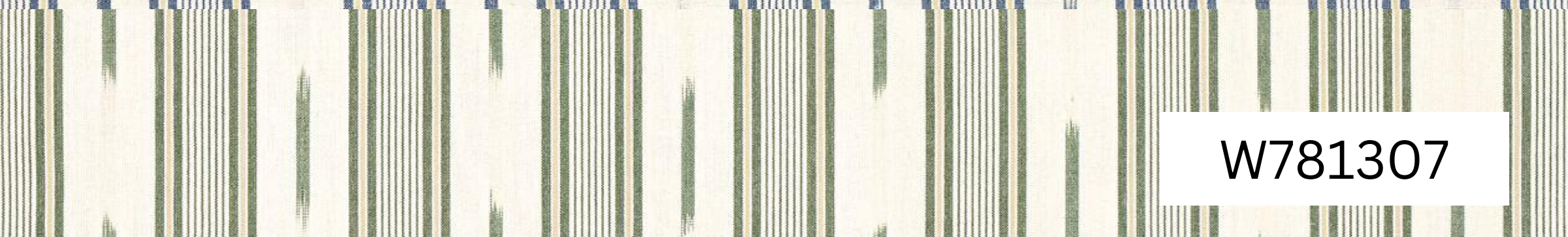
F981325

A close-up photograph of a fabric with vertical stripes. The stripes are composed of thin, closely spaced lines of red and white. The overall appearance is a dense, textured pattern.


W781309

A close-up photograph of a fabric with vertical stripes. The stripes are composed of thin, closely spaced lines of blue and white. The overall appearance is a dense, textured pattern.


W781308

A close-up photograph of a fabric with vertical stripes. The stripes are composed of thin, closely spaced lines of green and white. The overall appearance is a dense, textured pattern.

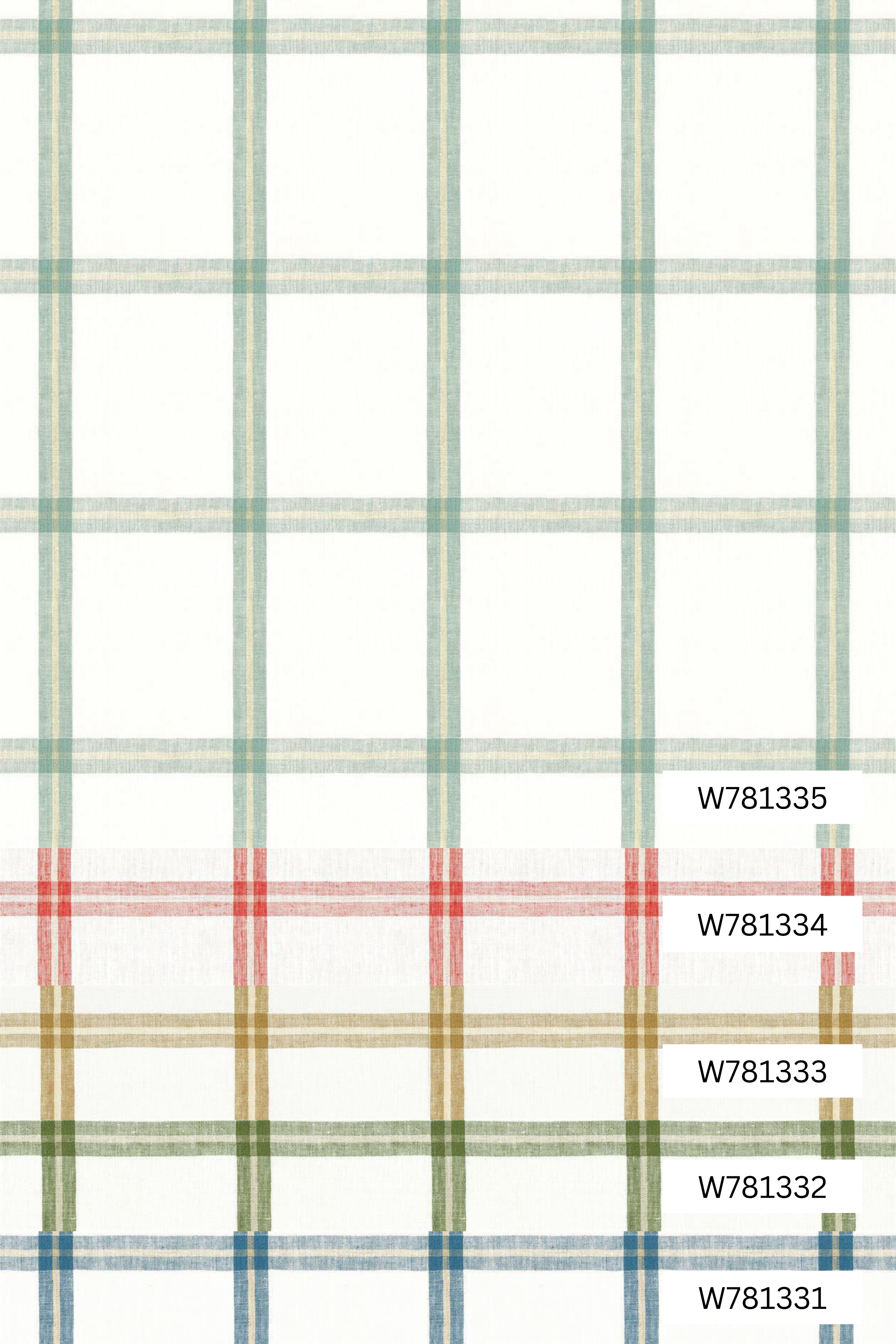
W781307

A close-up photograph of a fabric with vertical stripes. The stripes are composed of thin, closely spaced lines of gold and white. The overall appearance is a dense, textured pattern.

W781306

A close-up photograph of a fabric with vertical stripes. The stripes are composed of thin, closely spaced lines of blue and white. The overall appearance is a dense, textured pattern.

W781305

The image shows a grid of colored squares. The top three rows are white with green and yellow grid lines. The next three rows are white with red and yellow grid lines. The bottom two rows are white with blue and yellow grid lines. On the right side, there are five white rectangular labels, each containing a text string. The labels are positioned to the right of the grid lines.

W781335

W781334

W781333

W781332

W781331

