

A woman with dark brown hair and bangs, wearing a white blouse with colorful floral patterns, stands in front of a vibrant mural. The mural features a large white rabbit in profile, a rainbow arching over it, and a decorative silver floral border at the top. The text "amanda parer" is overlaid in the lower-left area of the image.

amanda parer

*"Creating art that evokes a sense of wonder whilst
raising questions about our relationship with the
natural world."*



contents

about	4
painting	5
sculpture	7
intrude	9
fantastic planet	11
fantastic planet (interactive)	13
lost	15
mini man	17
man	18
slime	19
BR (bunny resistance)	21
same same	23
'scence	25
sustainability	28
merchandise	29
public engagement	30
event and media highlights	31





about

Amanda Parer's artwork explores the complex relationship that mankind has with the natural world, her work aims for us to reflect on our impact on the environment. Her imagery plays with scale, light, darkness, humour and melancholy to convey these themes. Amanda finds inspiration from the dramatic landscapes found in her home in Tasmania, Australia.

Amanda has been exploring environmental themes in her work since a trip in 1995 to the Galapagos Islands, Ecuador, where she assisted on a natural history film documentary with film-makers David Parer and Liz Parer-Cook (her uncle and aunt). Here she experienced the natural world in its most pure, interconnected state. Within this archipelago, uniquely animals do not fear man. She states 'they were as curious of us as we were of them.' This highlighted to Amanda the importance of our role as stewards of this planet.

The larger than life animals used in Amanda's work are mostly introduced feral species to her home country; rabbits, deer and foxes. She beautifully executes these to be approachable, even humorous to draw the viewer into the more serious theme in the work, which is man's mismanagement of the environment.

Amanda's artwork has gained global recognition and been and appreciated by millions

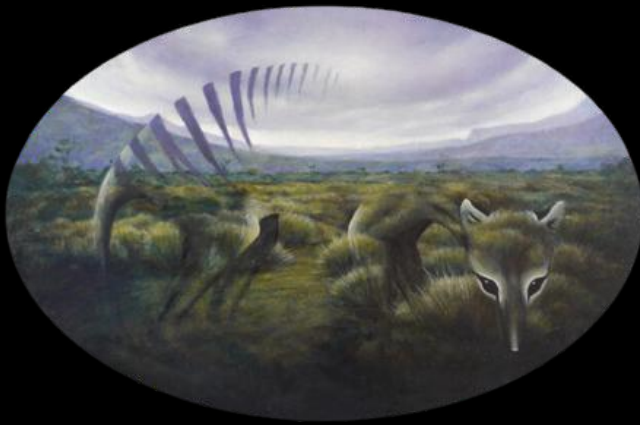
more about Amanda Parer >>>



painting



more about painting >>>



sculpture



more about sculpture >>>





Image supplied by Jason Reed

intrude

Rabbits are an introduced species to Amanda's native Australia and have been causing great destruction and imbalance in the island continent's delicate ecosystems since their arrival in 1788.

To Amanda the rabbit also is an animal of contradiction, they represent the fairy tale animals from our childhood; a furry innocence, frolicking through idyllic fields.

Intrude deliberately leans on this cutesy image coupled with a strong visual humour, to lure the audience into the artwork only to reveal the more serious environmental messages which form the basis of the work.

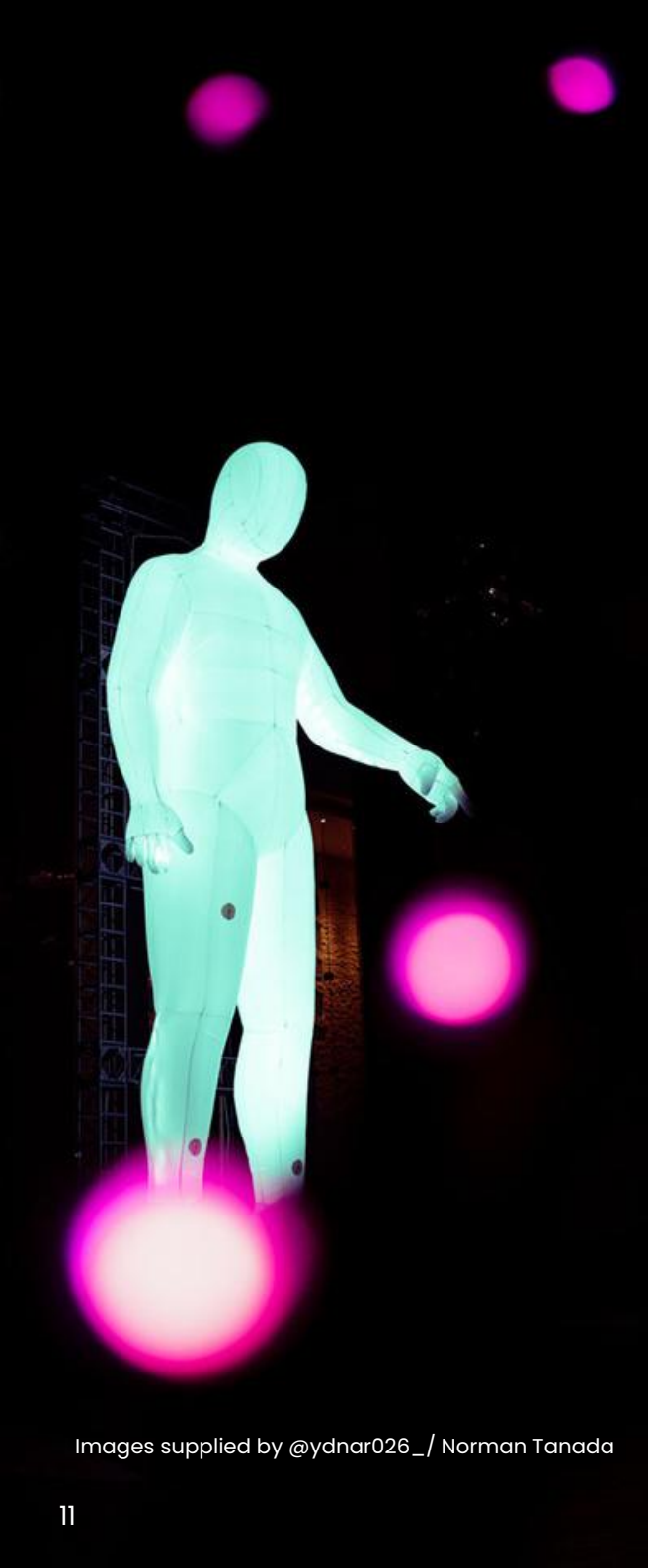
Their size references "the elephant in the room, the problem, like our impact on the natural world, big and in plain sight, but still chosen to be ignored", Amanda explains.

Materials: PVC tarpaulin, LED lights, internal air blowers.

more about Intrude >>>

Image supplied by @bellapictura





Images supplied by @ydnar026_/ Norman Tanada

fantastic planet

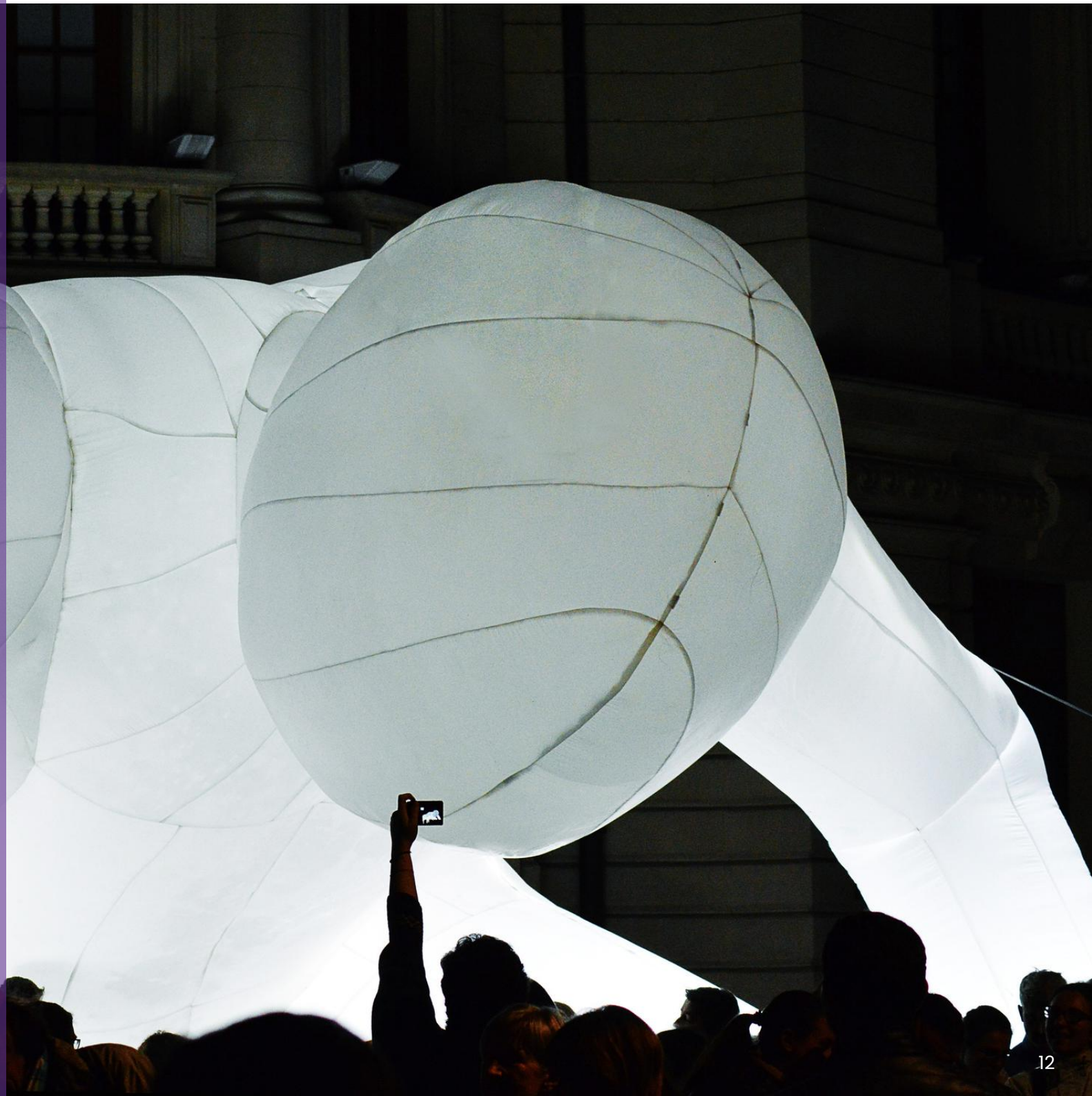
The giant humanoids of Fantastic Planet have landed from afar and are quietly and gently exploring our 'fantastic planet'.

Inspiration for this artwork has been taken from the 1973 Czech/ French film Fantastic Planet (French: La Planète Sauvage).

This stop-motion science fiction film directed by René Laloux, depicts a story set in an unimaginably distant future in a world inhabited with gargantuan humanoids where human beings exist but are considered feral, to be contained and kept for the amusement of the giants.

Materials: PVC tarpaulin, LED lights, internal air blowers.

[more about Fantastic Planet >>>](#)

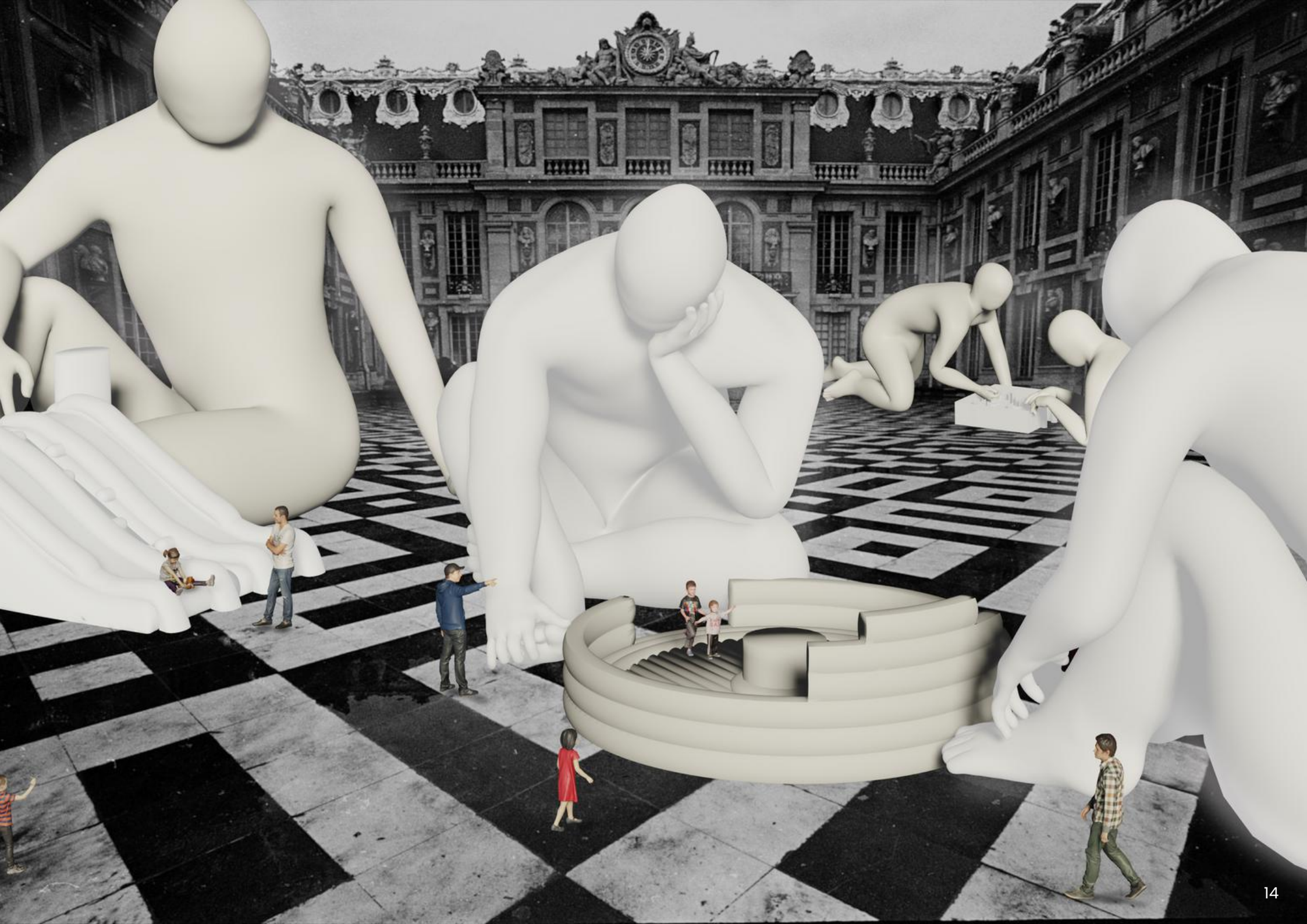


fantastic planet (interactive)

In this extension of the Fantastic Planet installation artwork the humanoids have come down to play. Such as in the 1973 Czech/ French film Fantastic Planet (French: La Planète Sauvage) where the giant humanoids keep and care for humans as pets and find joy in watching them play. These play areas are designed for guests to interact with and enjoy.

Materials: PVC tarpaulin, LED lights, internal air blowers. Maze, arena, slide are made out of traditional jumping castle thick and durable vinyl.







lost

The monumental flora featured in this work are either extinct or endangered botanical species from around the world.

Their beauty and size have been heightened to highlight the beauty and wonder that has been Lost. The artwork places the visitor in Alice's shoes as she wanders around the giant garden in Wonderland.

Materials: PVC tarpaulin, LED lights, internal air blowers.

more about Lost >>>

Image supplied by Brisbane Festival/ Atmosphere Photography



mini man

In this extension of Man, the main central figure is accompanied by a collection of 'mini men'. All in melodramatic and even comical poses to accentuate the themes and humour evident in the main artwork.

Materials: PVC tarpaulin, LED lights, internal air blowers.



man

Auguste Rodin's Thinker, made in 1880 is famous for celebrating man for his/her perfect physicality and is often used as an image to represent man's pursuit of intellectual thought and philosophy.

Parer's Man is a contemporised version, in this giant seated figure, we can see the results of our self-indulgence and self-importance. Man holds his head in search of answers, in search perhaps of what went wrong.

Materials: PVC tarpaulin, LED lights, internal air blowers.

more about Man >>>

Image supplied by Rami Saarikorpi





slime

Celebrating the abstract of the minuscule in the natural world. What was tiny is now gigantic in Slime.

The extreme beauty and abstract nature of these Myxomycetes (slime molds) have inspired this artwork. Slime molds grow to just a few millimeters high, an almost insignificant size that beguiles their fascinating story.

Slime molds are common in the temperate forests of Tasmania.

Some elements are inflated with continual internally placed air blowers others are blown up and sealed. The aerial spores are internally illuminated helium balloons that Amanda proposes to be only inflated at popular times during the event such as weekends.

Materials: PVC tarpaulin, printed vinyl, LED lights, internal air blowers.





BR (bunny resistance)

Graffiti and mural art can serve as a platform for giving voice to the voiceless. In this work Amanda acknowledges the immense power of these art forms and celebrates the numerous artists using them to make poignant and significant statements in public spaces worldwide.

The BR (bunny resistance) artists in this artwork act as emissaries, sporting a futuristic and playful appearance. They wear reflective masks, resembling astronauts exploring uncharted territories. While anonymous, they represent every individual, reflecting the viewers' own identities back at them.

"You don't have to talk truth to power,
you have to talk to the powerless"
Noam Chomsky, 2023.

Materials: PVC tarpaulin, reflective vinyl,
LED lights, internal air blowers.





same same

same same serves as a powerful representation of our shared physical vulnerability and the strength we gain when we come together. It acknowledges the individuals who have existed in the past, those who exist in the present, and those who will exist in the future. Throughout history, many conflicts and challenges have arisen due to superficial differences.

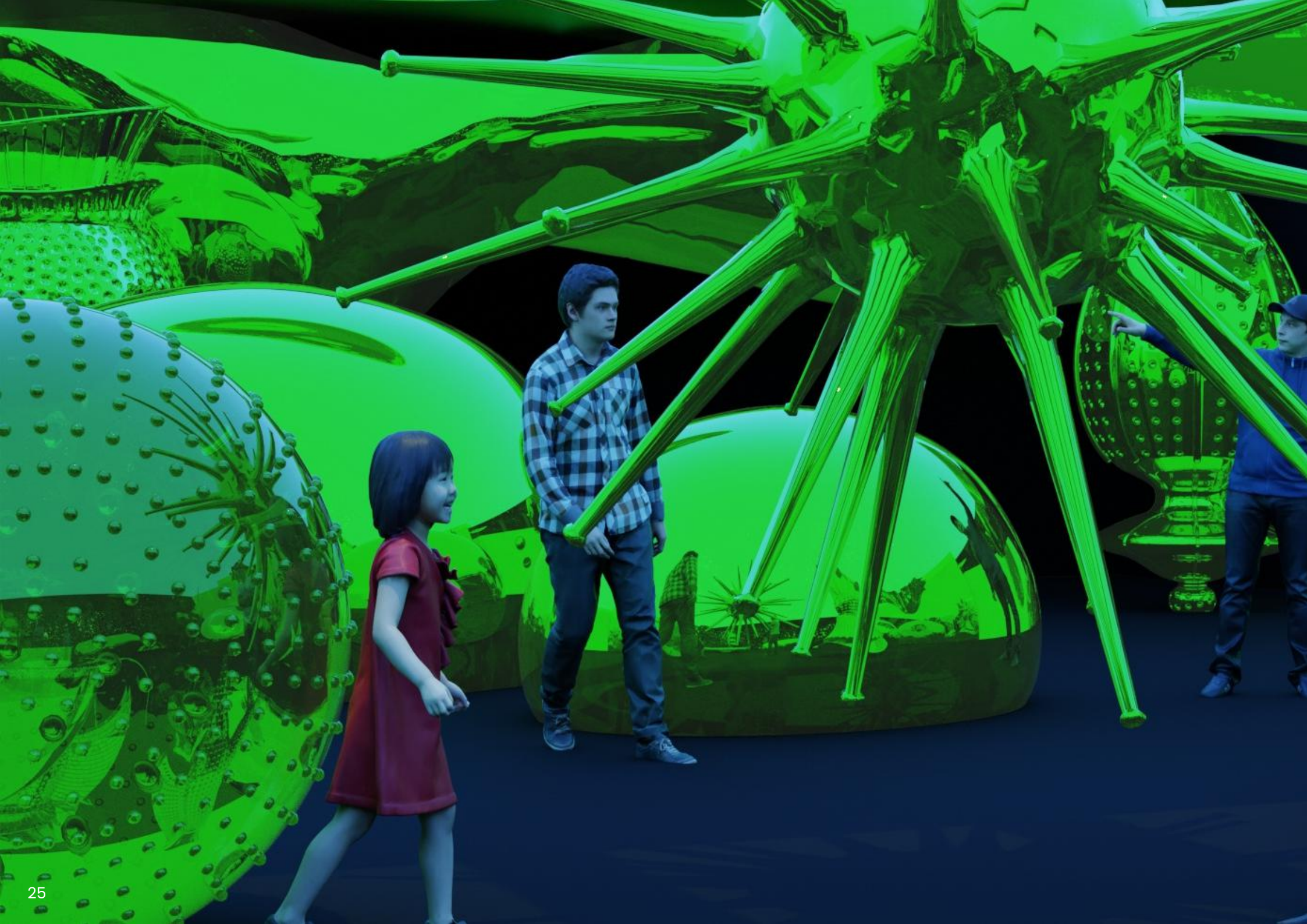
However, when we delve beneath the surface, we realize that we are all fundamentally the same same.

This installation consists of five distinct abstract pieces, each representing different shapes that symbolise our commonality - our anatomy.

Materials: PVC tarpaulin, LED lights, internal air blowers.



more about same same >>>



'science

Bioluminescence is a phenomenon in nature that captures the essence of light produced and emitted by living organisms. This artwork '*science*' draws inspiration from the abstract forms found in the myriad of luminous creatures that inhabit the environment.

This artwork is made of materials that are sensitive to fluorescent ultraviolet light. Resulting in a captivating piece that inspires a feeling of curiosity and adventure, and hoping to inspire respect for the wonders of the natural world.

Materials: PVC tarpaulin, LED lights, internal air blowers.

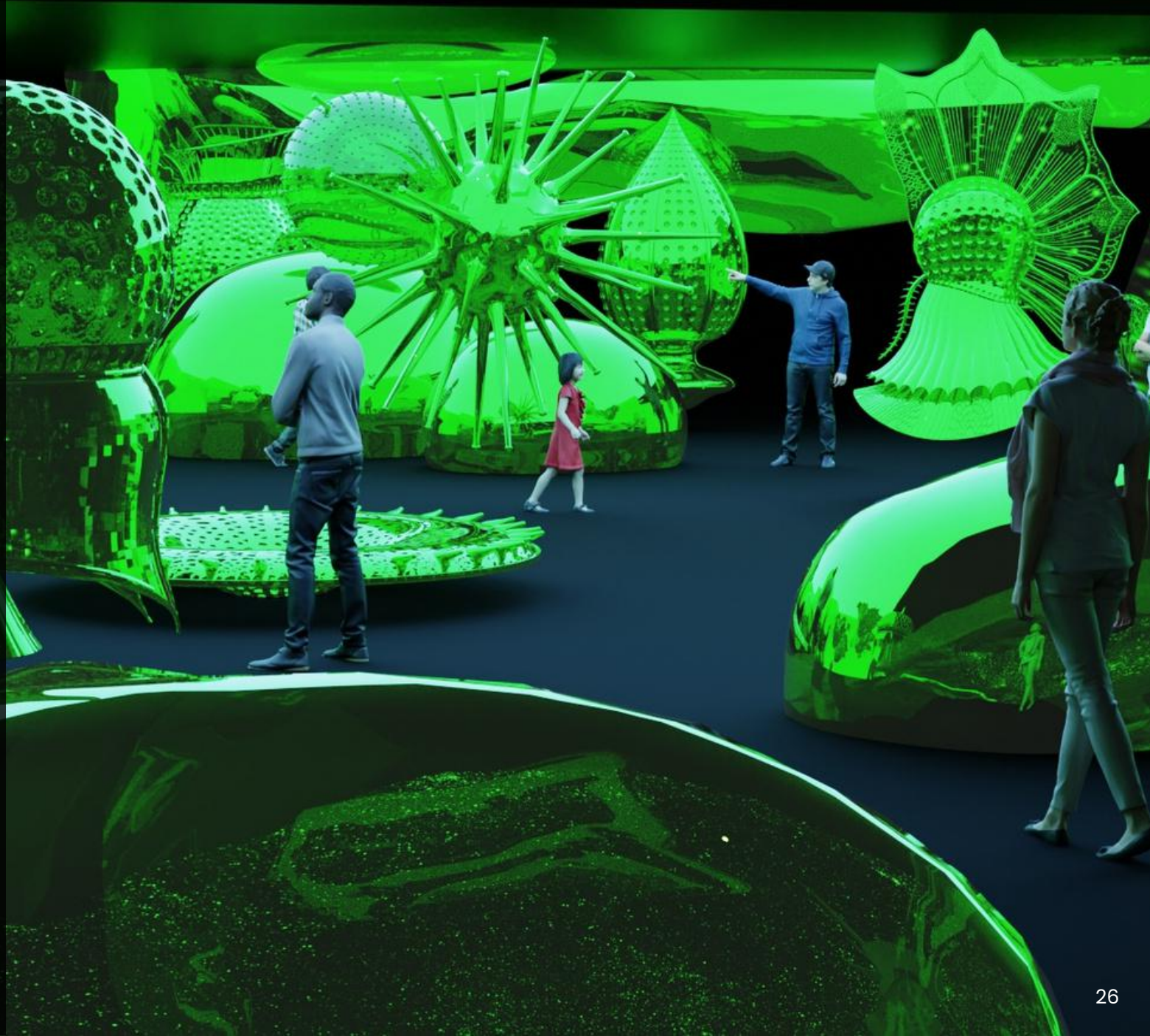




Image supplied by Richard Williams

sustainability

It is important to Amanda Parer to recycle materials sustainably, so when it's time for the artworks to retire from public life, it is only natural that we continue to spread their message and offer them up to be reused and recycled into something else.

The studio creates bags made from retired inflatable artworks which are then sold as merchandise, each is handmade and lined with a logo print. We also offer retired artwork materials to art non-profits around the world.

more about sustainability >>>



merchandise

clothing

lamps

art prints



view online store >>>



public engagement

Amanda Parer's exhibitions have inspired public engagement ranging from inspiring other creatives to make more work, school visitations and embarking on projects to make similar works such as paintings, sculptures and inflatables.

In the past curators have chosen to have musicians, DJs, orchestras, theatre, dance groups in amongst Amanda's artworks. They have also invited the public to join in on movie screenings, yoga, life drawing sessions and silent discos.

At exhibitions Amanda has held artist's talks, Q and A sessions with the public and the media and conducted artmaking sessions around her works.





event & media highlights

Man- Delectricty, Detroit, USA 2021

- 21m impressions on event social media
- Raised \$41m USD in media value
- Inspired more than 140 media stories

Lost – Brisbane Festival, Australia, 2021

- 181 media clippings with a reach of 17.5m
- 62K social media mentions
- Featured in Brisbane Festival program guide (30K copies)
- Festival website had 14K views on The Lost page

Intrude – Grand Rapids, Michigan, USA, 2021

- Partnered with over 60 businesses to enhance Downtown's vibrancy
- Helped bring 4.5m visitors, a 57% increase from the same period in 2020

Fantastic Planet – Night Feast, Brisbane, Australia, 2023

- Attracted 125K visitors
- Generated \$6.5m through direct job creation, food and beverage sales, and event expenditure.

Intrude – Downtown Iowa City, USA, 2023

- Attracted 163.7K visitors, an increase of 93.7K from the same period in 2022

Intrude– Pittsburgh Cultural Trust, USA, 2021

- TV ad campaign reached 1.8m viewers
- Email campaign reach of 700K
- 670K website impressions

Image supplied by Markus Ravik and Donna Chang



amanda parer

for enquiries
art@amandaparer.com



amandaparer.com

All images and designs contained herein are the subject of copyright
and remain the property of Amanda Parer and Amanda Parer Pty Ltd.