



**2022-23**



**March 26, 2023**



**Celebrating 54 Years of  
Boston Bruins Tradition on Ice**



OFFICIAL

# Chicken Sandwich

OF THE

# Boston Bruins Alumni Association

  
Greater Boston Area & New Hampshire



# Boston Bruins Alumni Roster

#17	Coach	Tom Songin	Boston College; 3 years with Boston Bruins
#37	Goalie	Keith Segee	Bruins back-up goalie
#10	Forward	Kenny Hodge	4 years in NHL; 2 years with Boston Bruins
#13	Forward	Ken Linseman	14 NHL seasons; 5 ½ seasons with Boston Bruins
#18	Defense	Rich Brennan	6 NHL seasons; 1 with Boston Bruins
#18	Forward	Mark Mowers	7 NHL seasons, 1 with Boston Bruins
#21	Defense	Frank Simonetti	4 years with Boston Bruins; 1 with Boston Bruins
#31	Forward	John Carter	8 years in NHL; 6 with Boston Bruins
#32	Forward	Bruce Crowder	4 years in NHL; 3 with Boston Bruins
#34	Defense	Dave Shaw	16 NHL seasons; 3 with Boston Bruins
#40	Defense	Bruce Shoebottom	4 NHL seasons with Boston Bruins
#41	Defense	Andrew Alberts	9 NHL seasons 4 with Boston Bruins
#41	Forward	Guy Larose	6 NHL seasons; 1 with Boston Bruins
#41	Defense	Al Pedersen	5 seasons with Boston Bruins
#42	Forward	Tim Sweeney	8 years in NHL; 3 with Boston Bruins
#43	Forward	Jean-Yves Roy	4 NHL seasons; 2 with Boston Bruins
#55	Forward	Mike Sandford	Son of Ed Sandford
	Guest Skater	Patrick Mullen	Son of Joe Mullen Guest Skater
	Guest Skater	Tim Sweeney, Jr.	

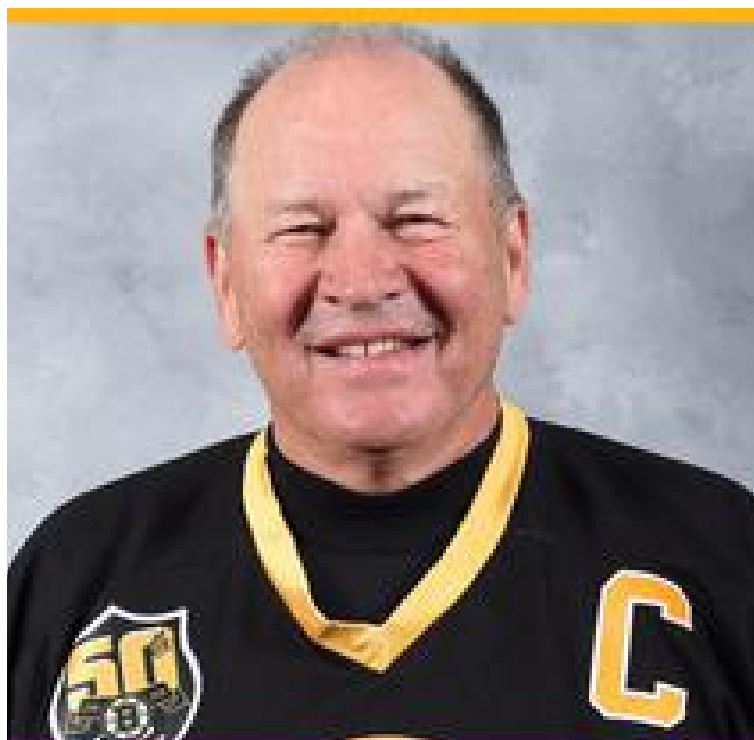
Don Garcia  
Bob Cormier  
John Horrigan

Mike Foley  
Craig Michaud

Frank Walker  
Mark Willand

Alex Bezanson

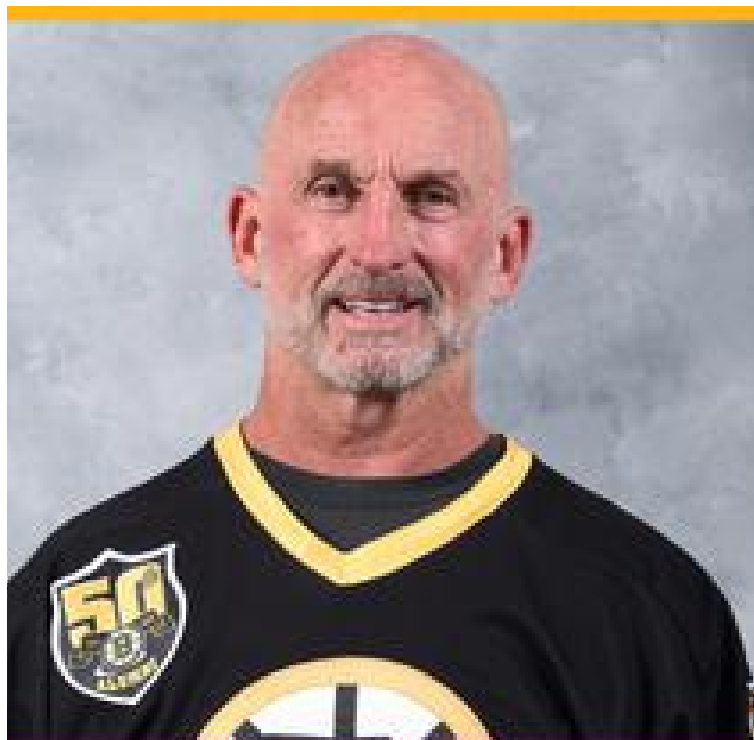
**BOSTON BRUINS ALUMNI TEAM**  
**2022-23 season**



**TOM SONGIN**  
1978-1981



**KEN HODGE, JR**  
1990-1992



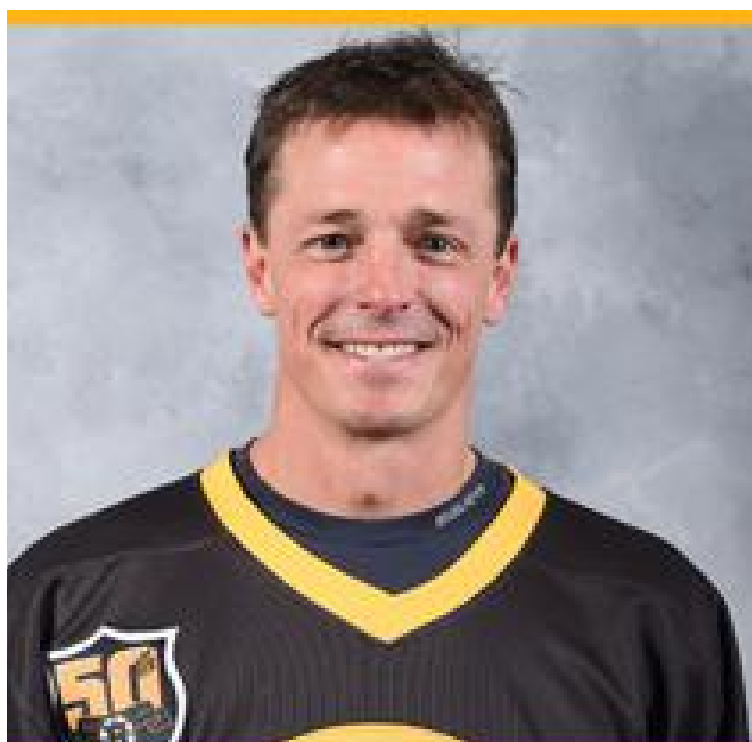
**KEN LINSEMAN**  
1984-1990



**RICHIE BRENNAN**  
2002-2003

**Boston Bruins Tradition on Ice**

**BOSTON BRUINS ALUMNI TEAM**  
**2023-23 season**



**MARK MOWERS**  
2006-2007



**FRANK SIMONETTI**  
1984-1988



**JOHN CARTER**  
1985-1991



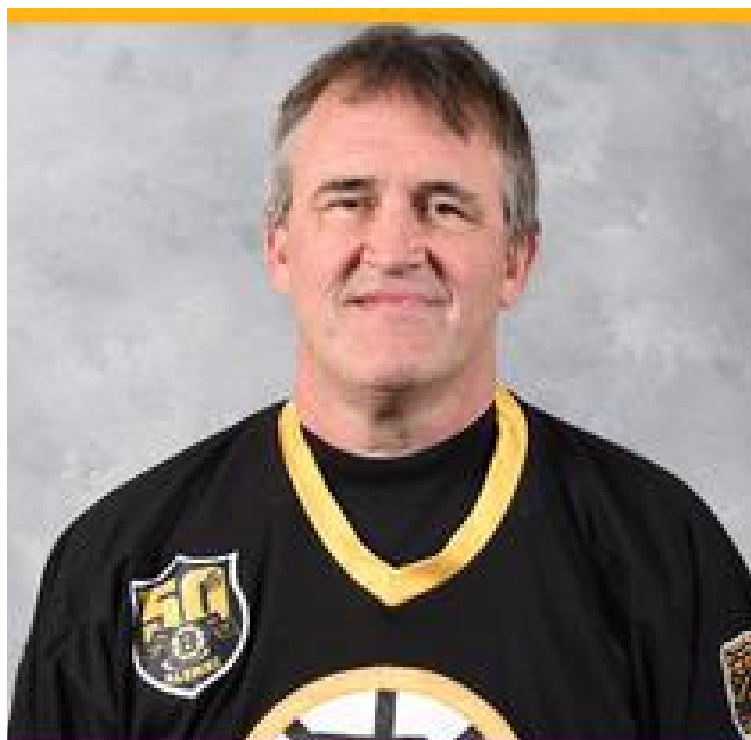
**BRUCE CROWDER**  
1981-1984

**Boston Bruins Tradition on Ice**

**BOSTON BRUINS ALUMNI TEAM**  
**2022-23 season**



**DAVE SHAW**  
1992-1995



**BRUCE SHOEBOTTOM**  
1987-1991



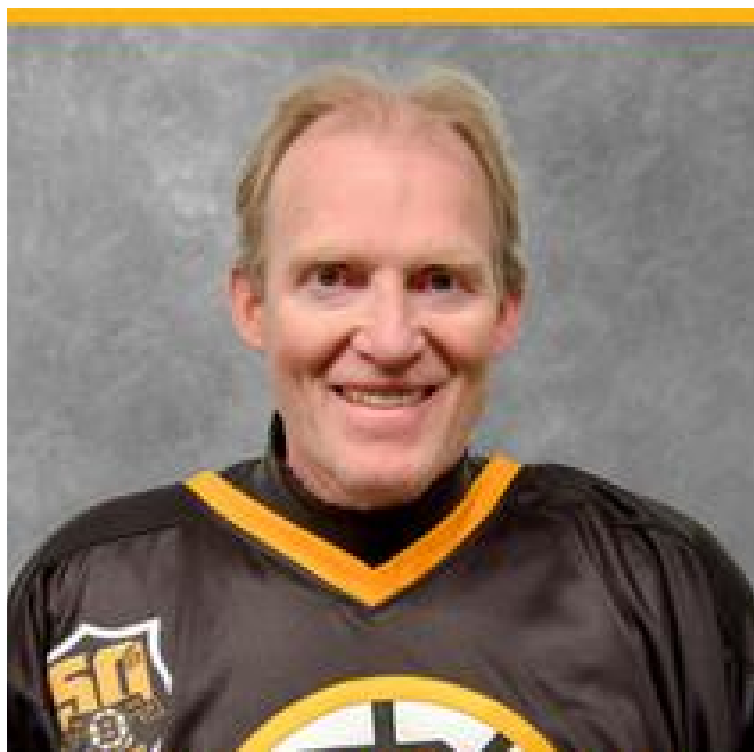
**ANDREW ALBERTS**  
2004-2008



**GUY LAROSE**  
1994-1995

**Boston Bruins Tradition on Ice**

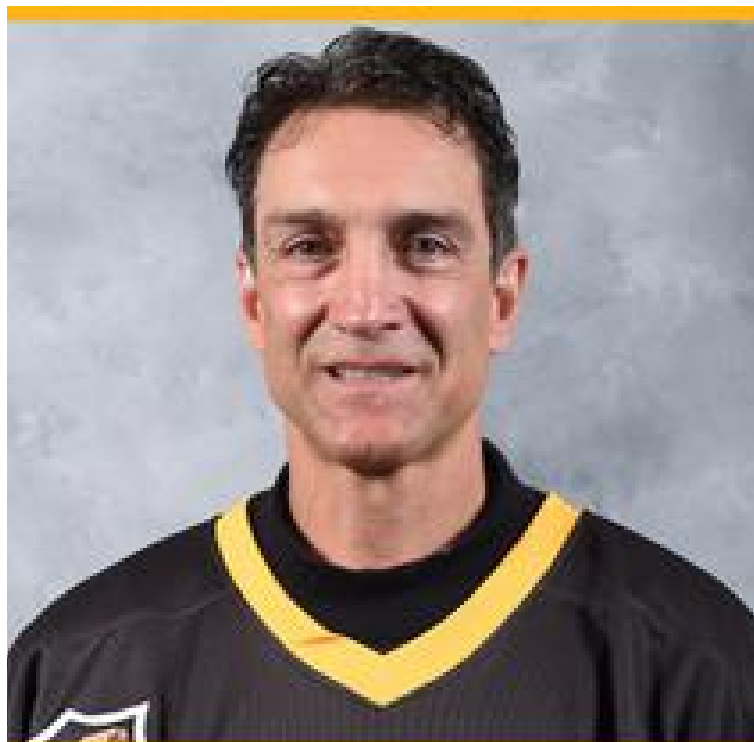
**BOSTON BRUINS ALUMNI TEAM**  
**2022-23 season**



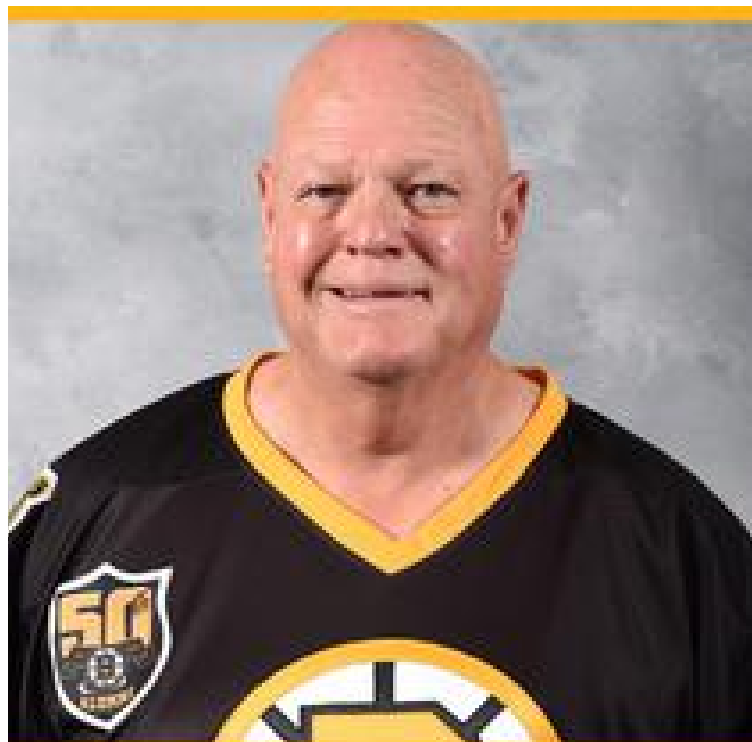
**ALLEN PEDERSON**  
1983-1991



**TIM SWEENEY**  
1992-93 & 1994-97



**JEAN YVES-ROY**  
1996-1998



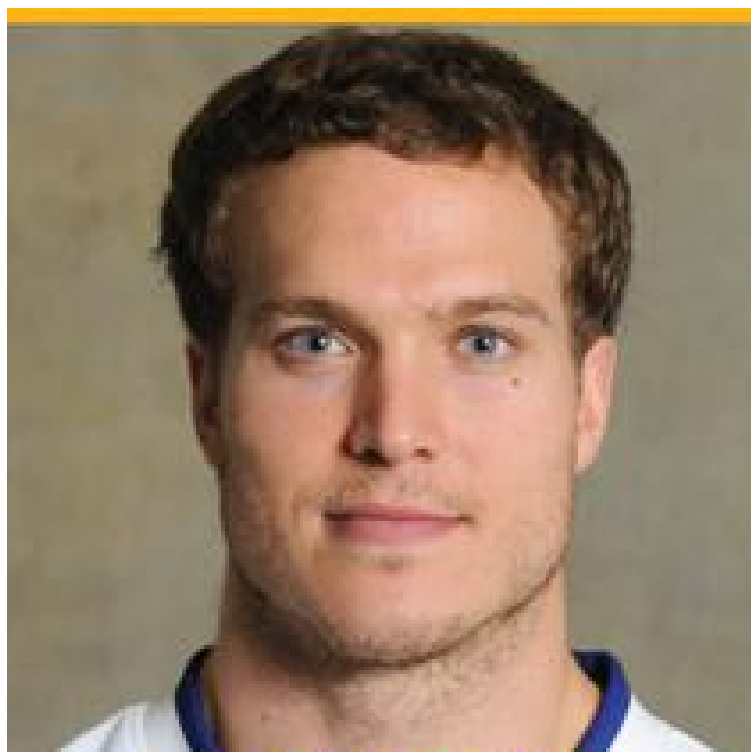
**MIKE SANDFORD**  
Son of Ed Sandford

**Boston Bruins Tradition on Ice**

# BOSTON BRUINS ALUMNI TEAM 2022-23 season



**KEITH SEGEE**  
HONORARY ALUMNI



**Patrick Mullen**  
Honorary Alumni



**Boston Bruins Tradition on Ice**



# BOSTON BRUINS ALUMNI TEAM 2022-23 season



**Kevin P. Foley**  
Proud Sponsor and Counsel of the  
Boston Bruins Alumni!

**Cam Foley**  
Bruins 2034

Attorney Kevin P. Foley, PC  
246 High Street  
Newburyport, MA 01950  
(978) 462-7076  
kevin@kevinfoleypc.com

**Karen Wonoski**  
Bruins Alumni Coordinator

**Bob Cormier**  
Alumni Hockey Operations

**John Horrigan**  
Alumni Game Announcer

**Frank Walker**  
Alumni Trainer/Equipment MGR

**Mike Foley**  
Alumni Trainer/Equipment MGR

**Don Garcia**  
Alumni Game Referee

**Maria Coan**  
Alumni Memorabilia Sales

**Alex Bezanson**  
Alumni Trainer/Equipment MGR

**Mark Willand**  
Media Director

**Steve Babineau**  
Bruins Photographer

**Craig Michaud**  
Alumni Photographer

**Ned Costantino**  
Alumni Photographer

**Watch Today's Game on April 20  
at [BostonBruinsAlumni.com](http://BostonBruinsAlumni.com)**

# Boston Bruins Alumni 2022-23 Schedule

Saturday, November 5, 2022 at 4:15pm  
Sunday, November 20, 2022 at 2:00pm

DCU Center, Worcester, MA  
Warrior Ice Arena, Brighton, MA

Why Me & Sherry's House  
Mass. Down Syndrome Congress

Saturday, December 3, 2022 at 2:00pm  
Sunday, December 18, 2022 at 4:30pm

Warrior Ice Arena, Brighton, MA  
Warrior Ice Arena, Brighton, MA

Warrior for Life Fund  
Matt Light Foundation

Saturday, January 7, 2023 at 1:30pm  
Sunday, January 15, 2023 at 2:00pm  
Saturday, January 21, 2023 at 2:00pm  
Sunday, January 22, 2023 at 2:30pm  
Saturday, January 28, 2023 at 2:00pm  
Sunday, January 29, 2023 at 1:00pm

Rinks at Exeter, Exeter, NH  
Tsongas Arena, Lowell, MA  
Warrior Ice Arena, Brighton, MA  
Skate 3, Tyngsboro, MA  
O'Malley Rink, Gloucester, MA  
The Bog, Kingston, MA

Candlepins for Cancer  
Bridge Club of Greater Lowell  
Warrior for Life Fund  
Tom Smith Foundation  
Gloucester 400<sup>th</sup> Anniversary  
Great Blizzard Special Hockey

Sunday, February 5, 2023 at 3:00pm

Everett Arena, Concord, NH

Stephen Cmar ROTC Scholarship Fund

Sunday, March 5, 2023 at 2:00pm  
Sunday, March 12, 2023 at 11:00am  
Saturday, March 18, 2023 at 3:00pm  
Sunday, March 26, 2023 at 2:00pm

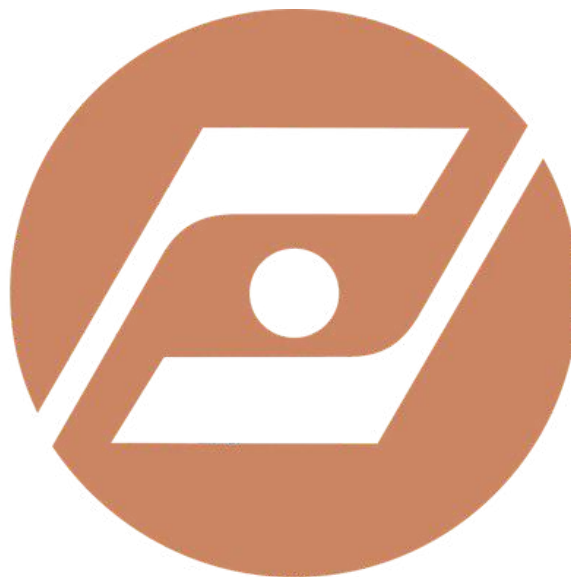
Breakaway Ice Center, Tewksbury, MA  
Warrior Ice Arena, Brighton, MA  
Dover Ice Arena, Dover, NH  
Larsen Rink, Winthrop, MA

The Penalty Box Foundation  
Just Keep Livin Foundation  
My Breast Cancer Support  
Boston Bruins Found. Children's Hosp.

Saturday, April 1, 2023 at 2:00pm  
Sunday, April 2, 2023 at 2:00pm  
Saturday, April 8, 2023 at 1:00pm  
Saturday, April 15, 2023 at 2:00pm  
Saturday, April 22, 2023 at 2:00pm

Veterans Memorial Rink, Haverhill, MA  
Warrior Ice Arena, Brighton, MA  
Rockland Ice Arena, Rockland, MA  
Warrior Ice Arena, Brighton, MA  
Warrior Ice Arena, Brighton, MA

Haverhill Police Relief Association  
Dana Farber Cancer Institute  
HUG Foundation  
Moments That Matter  
Stanley Keg Games/Michael Edgett



**OVERTIME**  
REAL ESTATE



TD GARDEN IS PROUD TO SUPPORT THE  
BOSTON BRUINS ALUMNI ASSOCIATION.



From your friends at TD Garden, proud home of the Boston Bruins.

**TD GARDEN**

**Celebrating the 50th Anniversary of the 1972 Stanley Cup**

# Keep us in your sites.



## Proud sponsor of the Boston Bruins: past, present and future

- Site Development
- Soil Remediation
- Earthwork
- Utility Work
- Site Improvements
- Equipment Rental

**JAMES W.**

**FLETT**

**CO. INC.**

**EXCAVATING CONTRACTORS**

800 Pleasant Street, Belmont, MA 02478 • 617-484-8500 • Fax 617-484-1279 • [www.jwflett.com](http://www.jwflett.com)

# YOUR TEAM, YOUR CHOICE.

We believe in building winning partnerships to protect your team for tomorrow. Whether your team is your family, business, or your employees, you can depend on Cross Insurance for the best insurance solutions.



COMMERCIAL INSURANCE   PERSONAL INSURANCE   EMPLOYEE BENEFITS   SURETY

OFFICIAL INSURANCE BROKER



[www.crossagency.com](http://www.crossagency.com)

# Original Boston Garden established in 1928 Dolben established in 1929

## The difference is DOLBEN

We are the Dolben Company – a dynamic real estate firm, with a family inspired culture, developing and managing best-in-class multifamily communities throughout the New England and Mid-Atlantic markets since 1929.

With our core value of stewardship, coupled with our extensive industry experience, we maximize each and every investment's potential.

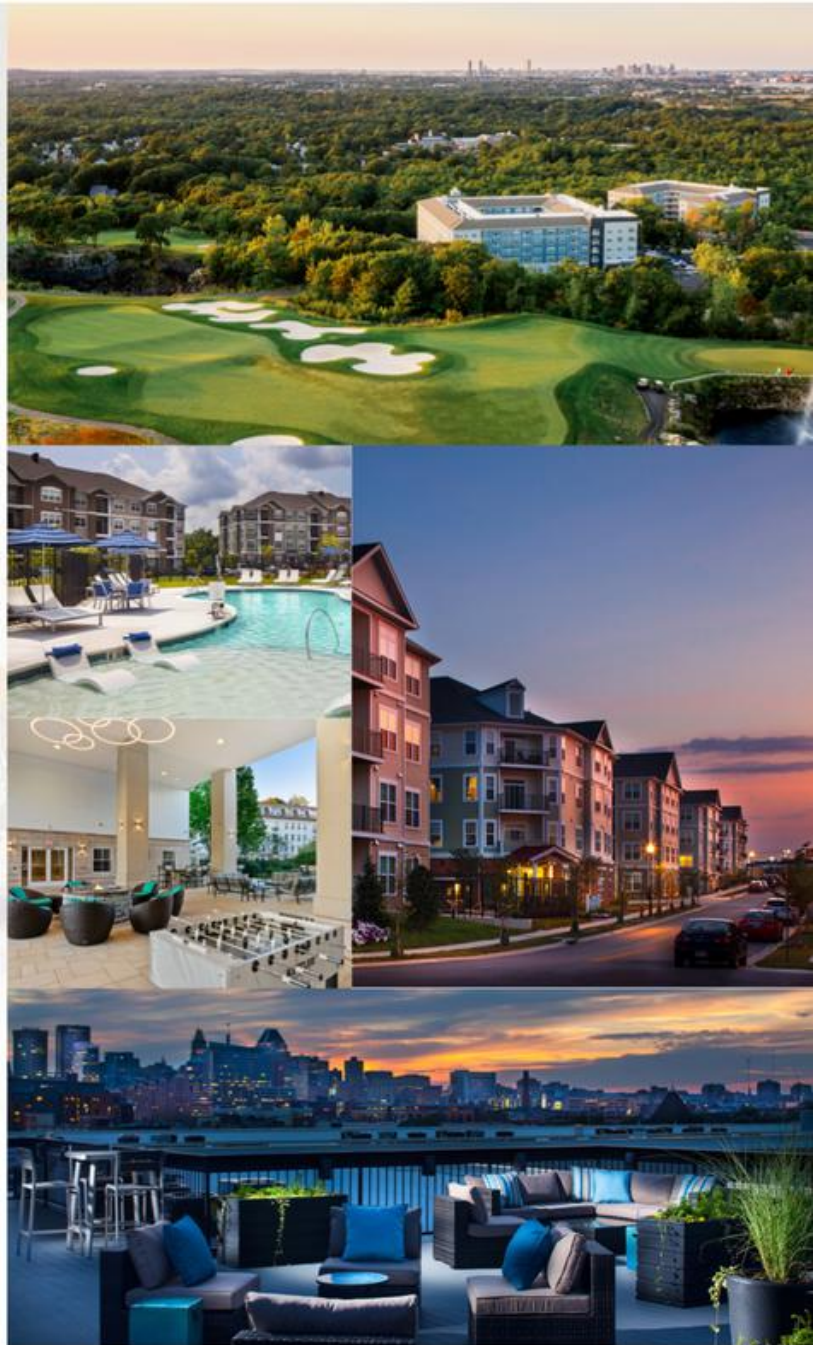
We are industry-leading experts with an innovative mindset. From site selection through construction – no development detail is too small.

We always put our residents first, working tirelessly to create communities people are proud to call home.

We are committed to fostering an inclusive and collaborative company culture that inspires personal and professional growth.

# LET'S GO BRUINS!

DEVELOPMENT  
MANAGEMENT  
INVESTMENT



Founding Member of



150 Presidential Way, Suite 220 Woburn, MA 01801 | DOLBEN.COM



**YOUR LIFETIME ROOFING SOLUTION.**



**SUGARLOAF**

**The Boston  
Bruins Alumni  
Thank John &  
Tracy Beaupre  
for their  
generous  
support from  
Sugarloaf Maine**



# TRESCA

**Delicious Italian food  
and traditional  
hospitality in  
Boston's North End.**

233 Hanover Street  
Boston, MA 02113  
p: 617-742-8240  
f: 617-742-8246

[info@trescanorthend.com](mailto:info@trescanorthend.com)



**94 HIGH ST. (RTE. 35) ·  
DANVERS, MA 01923  
TUES - FRI 9AM - 8PM ·  
SAT 9AM - 5PM  
· 978-777-7278  
(978-77-SPA-78)**

[www.maisonesthetique.net](http://www.maisonesthetique.net)







# CLEAN AND SAFE, INC



934 Washington St  
Norwood, MA, 02445

## BOSTON'S LEADING CLEANING AND SAFETY MATERIALS SUPPLIER

Protecting the greater Boston area since 2005.  
Your health is our priority.

617-762-5300

[www.cleanandsafeinc.com](http://www.cleanandsafeinc.com)

Clean and Safe Inc carries Green Seal Certified products which are proven effective against SARS-CoV-2, the virus that causes COVID-19



# Welcome to the Alumni Chris Bourque and Chris Winnes



**Chris Bourque**  
2012-2013



**Chris Winnes**  
1990-1993



*Luxury Transportation*

AAM 15

Real Estate Investment & Management

David R. Masse  
CEO/ Founder



# ATTENTION!

- › Carpenters
- › Electricians
- › Plumbers
- › HVAC
- › Landscapers
- › Other Contractors

**Want to save money on your insurance?** Talk to us.  
**Get a free 2nd opinion.** Give us a chance...you've got nothing to lose!

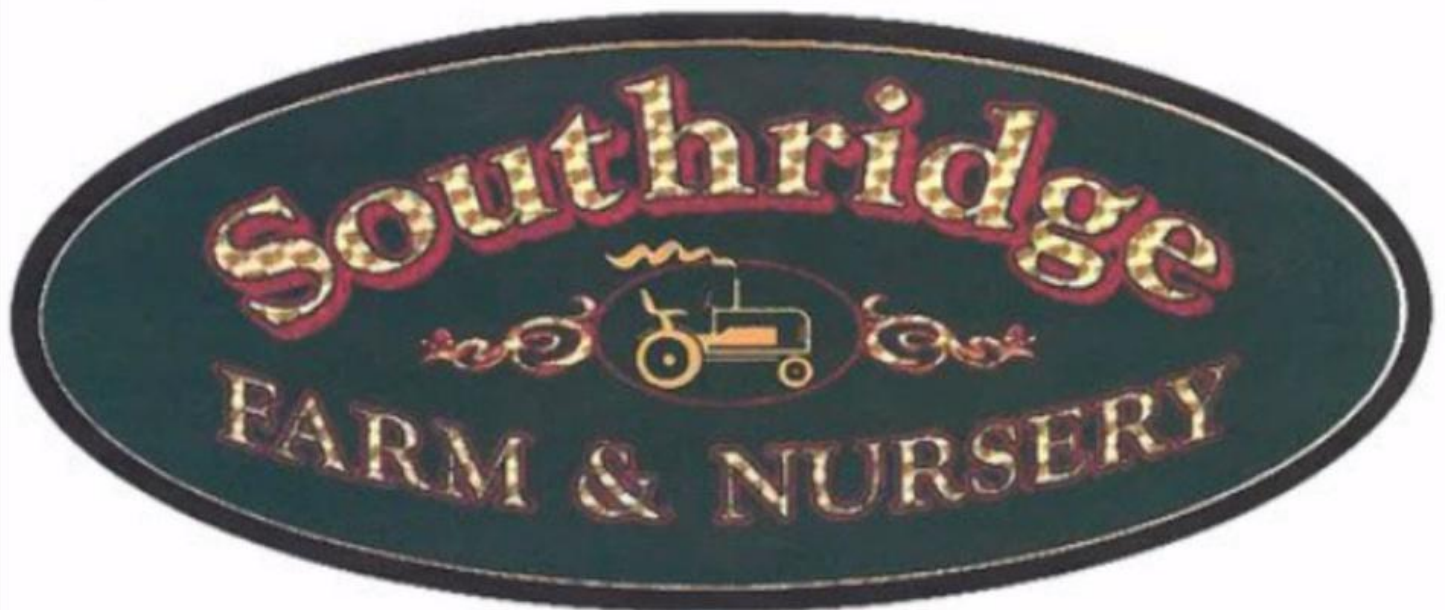
PROPERTY      LIABILITY      COMMERCIAL AUTO      UMBRELLA      EMPLOYEE BENEFITS  
WORKERS' COMP      BONDS      EMPLOYEE BENEFITS      DISABILITY      LIFE



508 787 5177



[businessinsurance@dfmurphy.com](mailto:businessinsurance@dfmurphy.com)



# Avidia has your back.

We are proud to support the  
Boston Bruins Alumni.



Honest to goodness.  **Avidia Bank**

Member  
**FDIC**



Member DIF

NMLS# 422902

[avidia.com](http://avidia.com)



**AHIHA** is much more than just a place where athletes learn how to skate and shoot pucks. It is an organization that works hard to help its participants to achieve goals and become successful in life and hockey.



*"I will never forget the first day in the locker room when the kids looked around the room and were surrounded by kids just like them – the looks on their faces were priceless! They were in awe!! We soon found out it wasn't "just a hockey camp", it is so much more! We found a new family."* Karen Gintoli, mother of 2 deaf hockey players (Bronze medal team, 2015 Deaflympics)

## AMERICAN HEARING IMPAIRED HOCKEY ASSOCIATION

**To Make A Contribution:** On our website: [www.AHIHA.org](http://www.AHIHA.org)  
**Or to contact us:** by phone (978)922-0955 by Email [kkmm2won@aol.com](mailto:kkmm2won@aol.com)

*AHIHA is funded entirely by contributions and staffed by volunteers*



**SUBARU**<sup>®</sup>  
**OF NEW ENGLAND**





AdvantageTruckNE.com



**SALES | SERVICE | PARTS**

**EMERGENCY SERVICES 24/7/365 | 800-395-8494**



*Killington*



# LEGS<sup>®</sup>

LEGACY EQUITY GROWTH SERVICES



**PJ HAYES INC.**  
EXCAVATING

399 SOUTH ST. WALPOLE MA 02081 | 508-668-9710



Rt. 28A & County Rd. • Cataumet, MA

[www.courtyardcapecod.com](http://www.courtyardcapecod.com)

**508-563-1818**

*Owned & Operated by  
Jay Miller*



Sportshots

*Photography by Ned Costantino*

115 Harvey Circle, Hanson, MA 02341 c781.789.6276

[photographybyned@comcast.net](mailto:photographybyned@comcast.net)



Proudly serving the Boston Bruins Alumni

— CERTIFIED PUBLIC ACCOUNTANTS —

**JOSEPH MAVILIO, CPA**

27 Water Street • Suite 113  
Wakefield, Massachusetts 01880

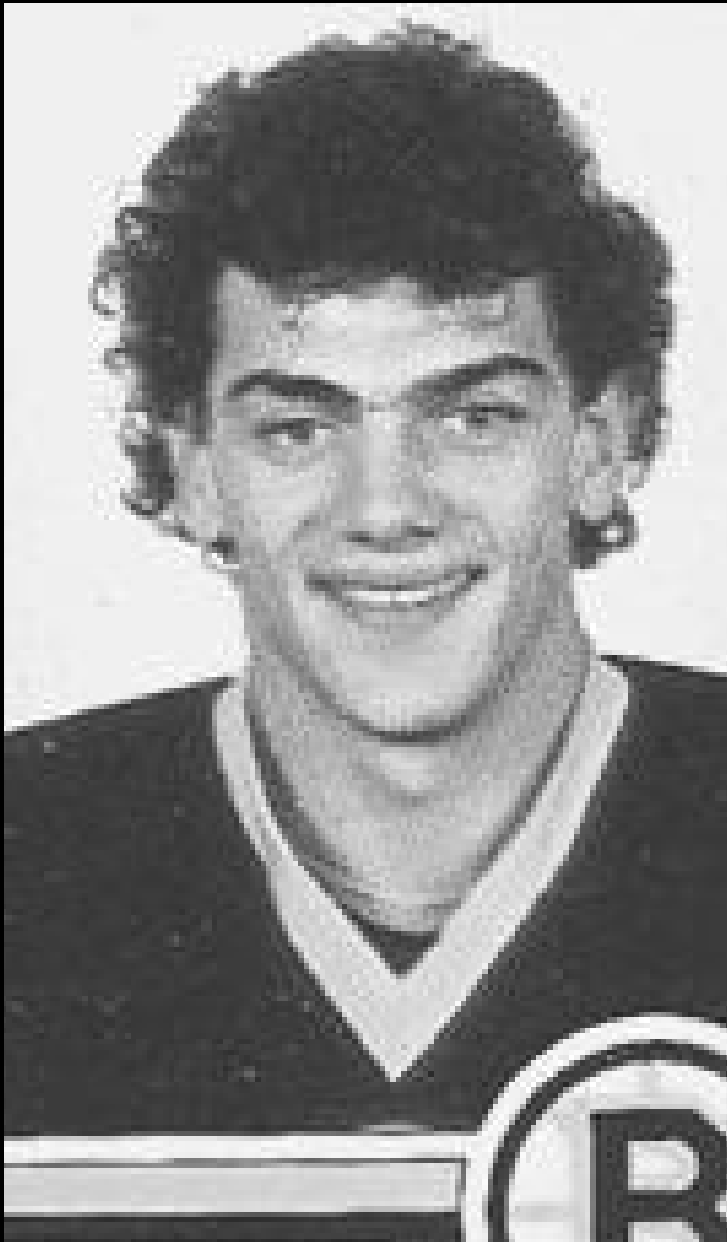
Telephone (781) 246-5154

Fax (781) 246-5158

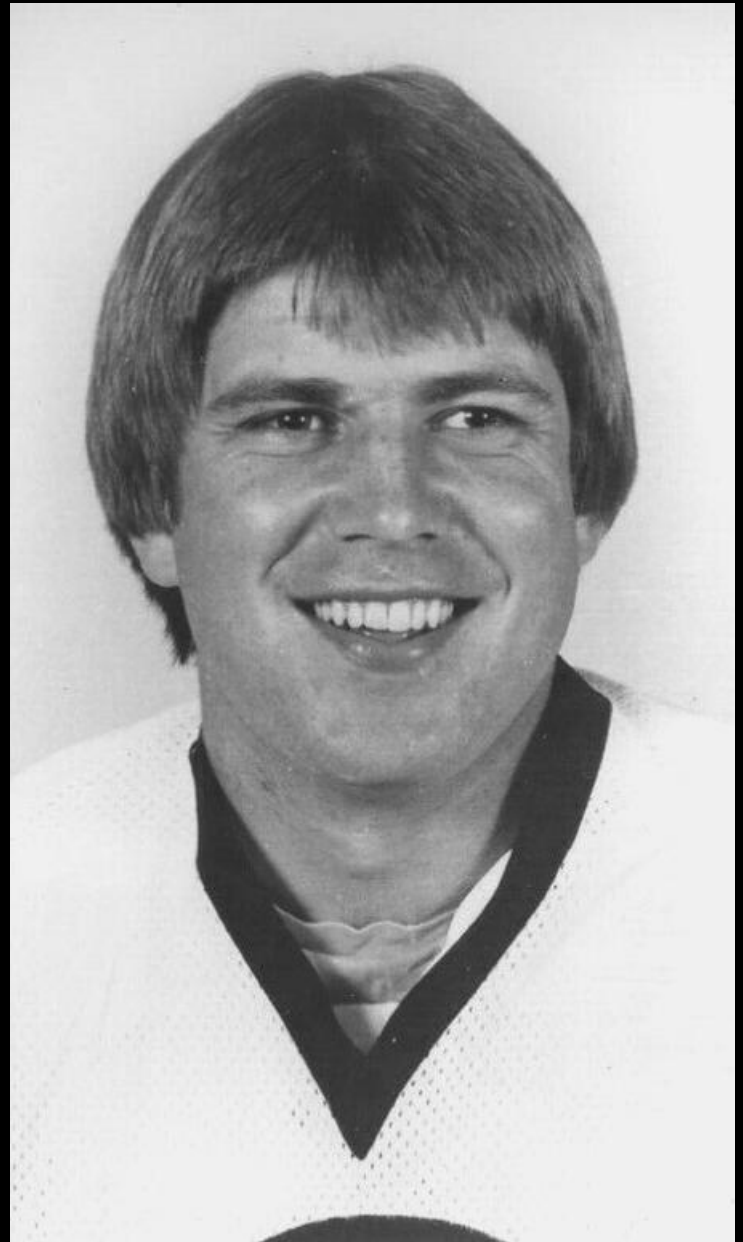
e-mail: [joe.mavilio@maviliocpa.com](mailto:joe.mavilio@maviliocpa.com)



*In Memory of our  
Departed Friends*



**Tom McCarthy**  
1960-2022



**Peter McNab**  
1952-2022