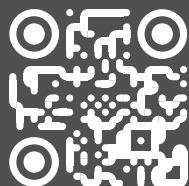


iHome

STICKVAC

SV6

Scan QR to activate your warranty, access support content, purchase accessories and more!



Owner's Guide
Model iHSV6-WHT



TABLE OF CONTENTS

1	Safety
2	Product Overview
3 - 4	Getting Started
5	Using your Vacuum
6 - 8	Maintenance
9	Troubleshooting
10	Warranty

Questions? Contact Customer Service

Web/Email: iHomeclean.com

Phone: 877-370-4580

SAFETY DEFINITIONS

- ▲ **WARNING:** Indicates a hazardous situation that, if not avoided, could result in death or serious injury.
- ▲ **CAUTION:** Indicates a hazardous situation that, if not avoided, could result in minor or moderate injury.
- ▲ **NOTICE:** Indicates a hazardous situation that, if not avoided, could result in property damage.

Before using this product, please read the following safety instructions and follow all safety precautions. Any operation inconsistent with this instruction manual may cause damage to this product.

▲ **WARNING - To reduce the risk of fire, electric shock, or injury:**

- 1:** This appliance is intended for dry floor use only. Do not use the appliance to pick up any wet spills and do not allow the dust bin contents to become wet.
- 2:** This appliance is not a toy. Close attention is necessary when used by or near children, pets or plants.
- 3:** Use only as described in this manual. Use only manufacturer's recommended attachments.
- 4:** Do not handle charger, including charger plug, and charger terminals with wet hands.
- 5:** Keep hair, loose clothing, fingers, and all parts of body away from openings and moving parts. Use extra care when cleaning on stairs.
- 6:** Do not use to pick up flammable or combustible liquids, such as gasoline, or use in areas where they may be present.
- 7:** Do not use appliance without filters in place.
- 8:** Do not vacuum anything that is burning or smoking, such as cigarettes, matches, or hot ashes.
- 9:** Always switch off the appliance when not in use or attempting any maintenance as the brush may start unexpectedly.
- 10:** The charger must only be connected to an AC power supply at the voltage shown on the rating label. This cleaner should only be used for its intended purpose as described in this instruction manual.
- 11:** Do not incinerate the appliance even if it is severely damaged. The batteries can explode in a fire.
- 12:** Do not modify or attempt to repair the appliance or the battery pack except as indicated in the instructions for use and care.
- 13:** Recommended ambient temperature range for using the appliance is 32°F to 104°F.

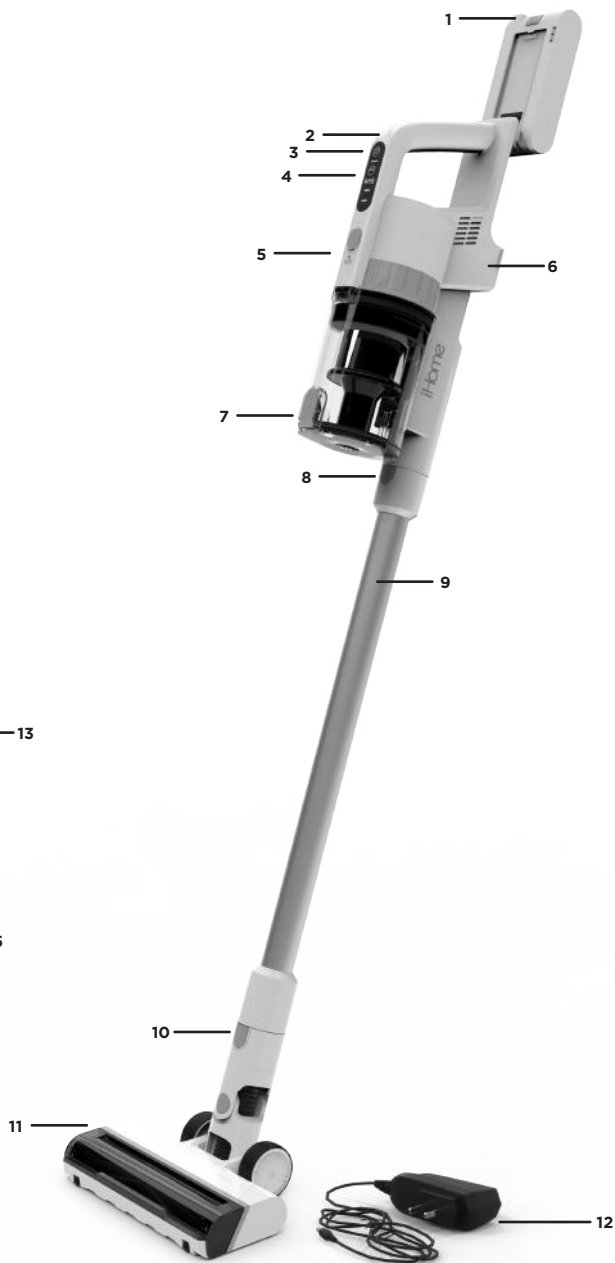
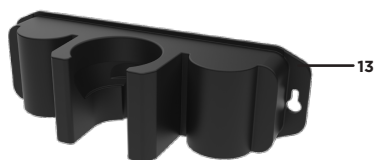
FCC Information

- 1:** This device complies with Part 15 of the FCC Rules. Operation is subject to the following two conditions: (1) This device may not cause harmful interference, and (2) This device must accept any interference received, including interference that may cause undesired operation.
- 2:** Changes or modifications not expressly approved by the party responsible for compliance could void the user's authority to operate the equipment.

NOTE: This equipment has been tested and found to comply with the limits for a Class B digital device, pursuant to Part 15 of the FCC Rules. These limits are designed to provide reasonable protection against harmful interference in a residential installation. This equipment generates uses and can radiate radio frequency energy and, if not installed and used in accordance with the instructions, may cause harmful interference to radio communications. However, there is no guarantee that interference will not occur in a particular installation. If this equipment does cause harmful interference to radio or television reception, which can be determined by turning the equipment off and on, the user is encouraged to try to correct the interference by one or more of the following measures: Reorient or relocate the receiving antenna. Increase the separation between the equipment and receiver.

Connect the equipment into an outlet on a circuit different from that to which the receiver is connected. Consult the dealer or an experienced radio/TV technician for help.

1. Rechargeable Battery
2. Handle
3. Turn ON/OFF Button
4. Suction Control Button
5. Dustbin Housing Release Button
6. Outlet Filter
7. Dustbin Canister Cover Latch
8. Tube Release
9. Metal Tube
10. Floor Brush Release
11. Motorized Floor Brush
12. Power Adapter
13. Wall Mount Bracket/Tube Holder
14. 2-in-1 Small Brush
15. Crevice Tool



Vacuum Assembly

The SV6 can be used in handheld or stick configuration. Follow the steps below for stick assembly.



A: Tube Installation: Insert tube until you hear a click.

B: Brush Installation: Insert brush until you hear a click.

C: Battery Installation: Align the battery to the grooves as shown and slide until you hear a click.

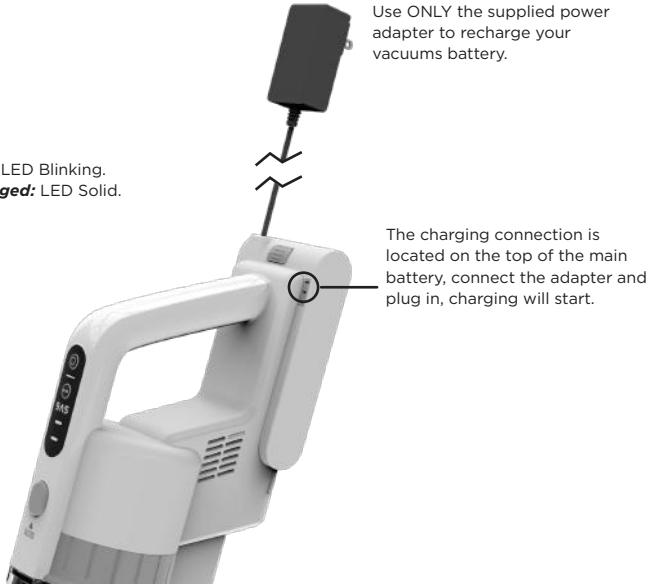
Battery Charging

Charging Status



Charging: LED Blinking.
Fully Charged: LED Solid.

Charging your Battery



Use **ONLY** the supplied power adapter to recharge your vacuums battery.

The charging connection is located on the top of the main battery, connect the adapter and plug in, charging will start.

Note: the battery can be recharged when it is connected to the vacuum OR removed from the vacuum.

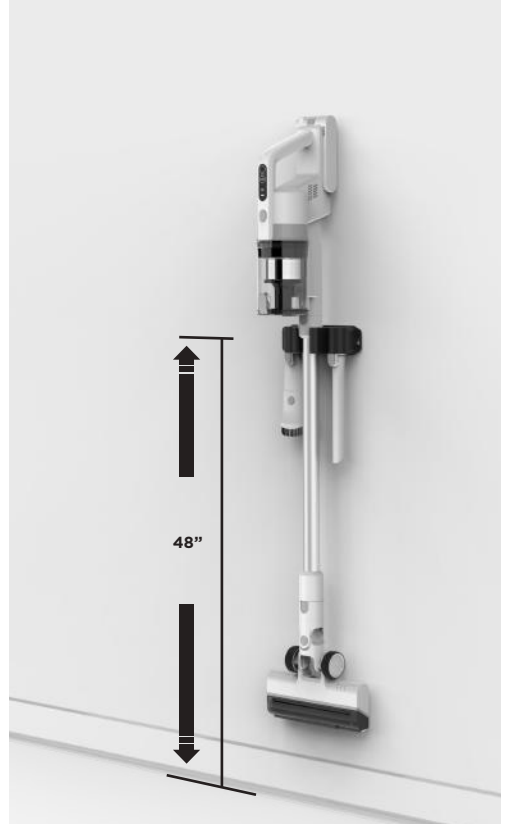
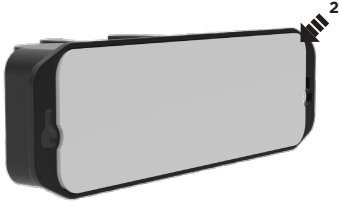
Questions? Contact Customer Service

Web/Email: iHomeclean.com

Phone: 877-370-4580

Installing the wall-mount

- 1: Determine the best wall location for mounting the dock. Be sure an outlet is nearby to connect the power cable.
- 2: For your convenience, self-adhesive tape is fixed onto the back of the wall mount. (**Note:** using the tape may damage the surface of your wall if ever removed). The tape can only support the weight of the vacuum accessories. To support the weight of the vacuum, install the wall-mount to the wall with the screws/anchors provided.
- 3: Install the vacuum accessories as shown.



Warnings

- We do not recommend mounting the wall-mount if you are unsure of how to properly install the drywall anchors and screws. Consult a professional if you need support.
- Ensure the wall surrounding the mounting area is free of gas, water pipes, electrical cables, wires or other obstructions.

Operation

Note: Designed for indoor use. Do not vacuum liquids.

- 1: Please fully charge your battery (up to 4-5hrs) before first use for optimal performance.
- 2: To turn on your vacuum press the Power Button.
- 3: Toggle between ECO and MAX suction. (**Note:** Battery life decreases more rapidly using MAX mode).



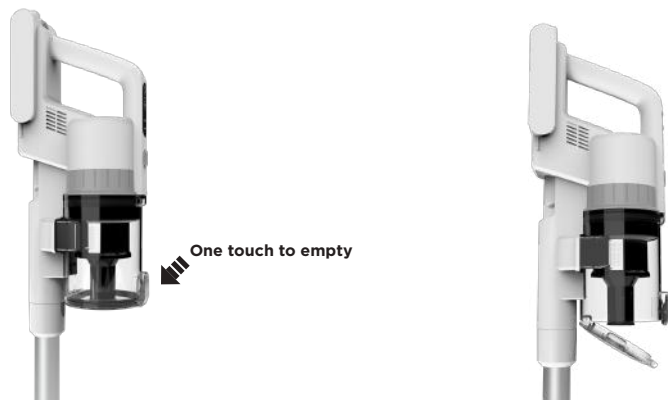
Questions? Contact Customer Service

Web/Email: iHomeclean.com

Phone: 877-370-4580

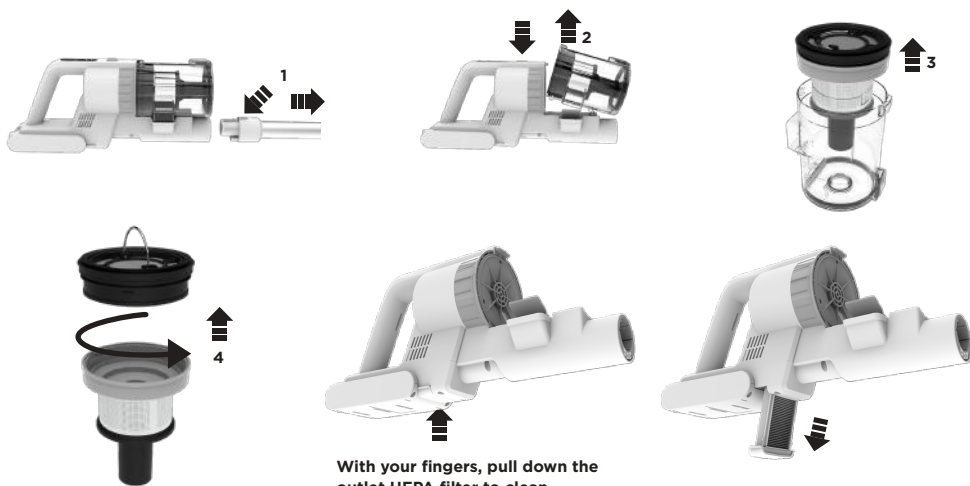
Cleaning Dustbin and Filters

Note: Empty your dustbin and clean filters regularly to ensure optimal performance.



Disassemble and Cleaning

1. Press the tube release button, remove the stick from the main unit of the vacuum.
2. Push the dustbin release button and lift dustbin away from main unit.
3. Lift the inner filter from the dustbin to access the HEPA Filter.
4. Rotate the HEPA housing clockwise. Remove the HEPA and sponge filter for cleaning. Tap to dislodge fine dust and then rinse under cold water as needed for a deeper clean. Allow to FULLY dry (24hrs recommended) before reassembling.

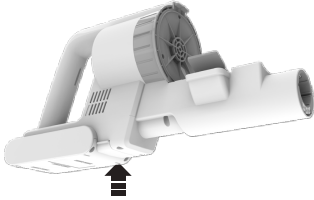


Cleaning Dustbin and Filters

Note: Empty your dustbin and clean filters regularly to ensure optimal performance.

Reinstall the Dustbin

5. When installing the dustbin, please align the lock first, and then press the front end of the dustbin to install the component.



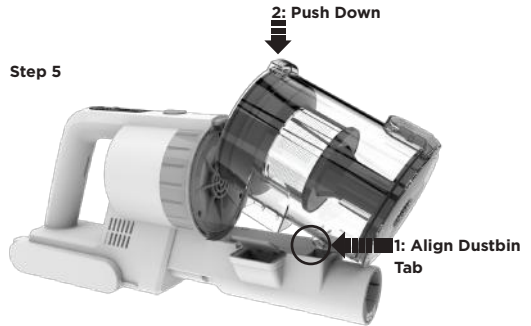
Push the outlet HEPA back into the main unit after cleaning.



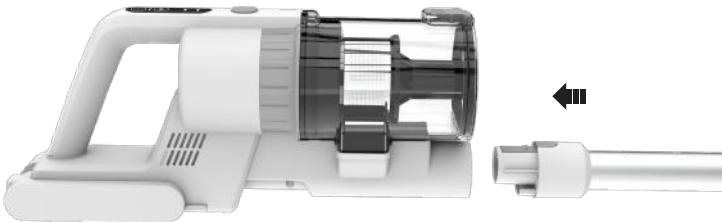
Replace the HEPA housing and turn counter clockwise until it locks in place.



Push the HEPA housing back into the dustbin.



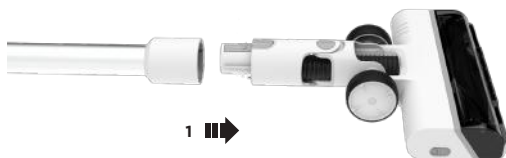
Carefully place the dustbin tab into its location and press firmly down to install into the main unit until you hear a click.



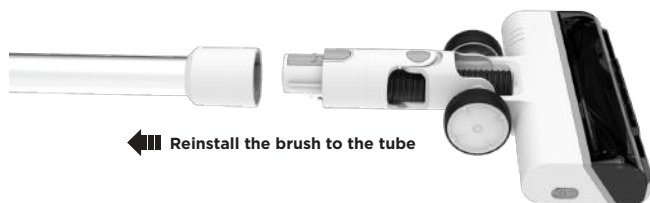
Reinstall the stick to the main unit to operate the Stickvac.

Cleaning the Floor Brush

- 1: Remove the brush from the tube by pressing the release button and pulling apart.
- 2: Slide the release tab at the side of the floor brush to release the floor brush from its housing.
- 3: Remove the brushroll by sliding up and out.
- 4: Remove debris/hair wrapped around the roller.
- 5: Wipe down the inside of the housing.
- 6: Ensure there is no debris lodged in the neck of the brush assembly or in the metal tube.
- 7: Reinstall the brush as shown.



Reinstall Brush



PROBLEM	CAUSE	SOLUTION
Vacuum does not power on	Battery is depleted.	Charge the Battery.
	Battery is still connected to the adapter or vacuum is on the charging mount (standby mode).	Disconnect the battery from the adapter or remove vacuum from the charging mount.
Weak suction power	Dust Canister is full.	Empty the dust canister.
	Filters are clogged.	Clean and/or replace your filters.
	Brush roller is entangled with hair and debris.	Remove and clean the brush.
	Improper filter installation.	Inspect filters to confirm alignment and proper installation.
	Blocked tube or attachment.	Remove the metal tube and attachments. Clear blockages.
Abnormal motor noise or volume	A blockage may be overworking the motor.	Inspect the dust canister, filters, metal tube, brush roller, or attachments for blockages and remove found debris.
Battery will not charge	Power source not providing electricity.	Plug another product into your power source to ensure electrical output.
	Adapter is faulty.	visit www.ihomeclean.com to purchase a new adapter.
	Battery is faulty.	contact customer support for replacement.

Questions? Contact Customer Service

Web/Email: iHomeclean.com

Phone: 877-370-4580

The One (1) Year Limited Warranty applies to purchases made from authorized retailers of Silver Point Innovations LLC. Warranty coverage applies to the original owner and to the original product only and is not transferable. We recommend registering your product online at www.ihomeclean.com

SilverPoint warrants this product to be free from defects in workmanship and materials, under normal household use and conditions, one (1) year from the date of original purchase and maintained according to the requirements outlined in this User Manual. Should this product fail to function in a satisfactory manner, it is best to contact our customer service team at 877-370-4580 so that we may help resolve the matter. Should service be required by reason of any defect or malfunction during the warranty period, SilverPoint will repair or, at its discretion, replace the product.

The One (1) Year Limited Warranty is subject to the following conditions and exclusions:

The original unit and/or non-wearable parts deemed defective, in SilverPoint's sole discretion, will be repaired or replaced up to one (1) year from the original purchase date. In the event a replacement unit is issued the replacement product will be warranted for the remainder of the original warranty period or thirty (30) days from the date of shipment of the replacement product, whichever is longer. SilverPoint reserves the right to use new, refurbished or used parts in good working condition to repair or replace any product.

Exclusions:

(1) Normal wear and tear of wearable parts (such as batteries, brushes, HEPA filters, pads, etc.), which require regular maintenance and/or replacement to ensure the proper functioning of your unit, are not covered by this warranty. Replacement parts are available for purchase at ihomeclean.com. (2) Any unit that has been tampered with or used for commercial purposes. (3) Damage caused by misuse, abuse, negligent handling, failure to perform regular maintenance (i.e., not cleaning the filters), or damage due to mishandling in transit. (4) Consequential and incidental damages. (5) Defects caused by repair persons not authorized by SilverPoint. (6) Products purchased, used, or operated outside of North America.

Claiming Warranty Support:

You must call 877-370-4580 to initiate a warranty claim and have the product on hand during the call. You will need the original receipt as proof of purchase.

The One (1) Year Limited Warranty does not cover the cost of shipping this product to our service center or its return to the owner. Please call Customer Service at 877-370-4580 to obtain shipping instructions.

Disclaimer: This warranty is valid only in the United States of America and does not extend to owners of the product other than to the original purchaser. In no event will SilverPoint or any of its affiliates, contractors, resellers, their officers, directors, shareholders, members or agents be liable to you or any third party for any consequential or incidental damages, any lost profits, actual, exemplary or punitive damages. (Some states do not allow limitations on implied warranties or exclusion of consequential damages, so these restrictions may not apply to you.) This warranty gives you specific legal rights, and you may also have other rights which vary from state to state. Your acknowledgement and agreement to fully and completely abide by this disclaimer of warranty is contractually binding to you upon your transfer of currency (money order, cashier's check, or credit card) for purchase of your SilverPoint product.