

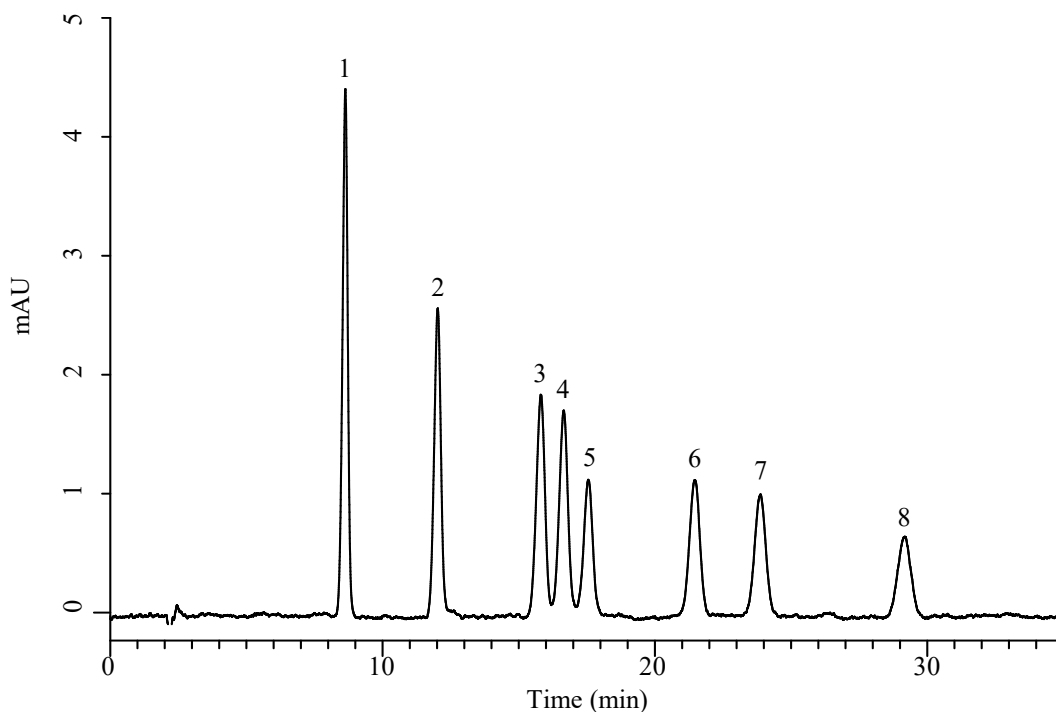
InertSearch for LC

Inertsil Applications

Analysis of 8 kinds of Aldehydes

(Detected by Pre-Column Method with DNPH)

Data No. LB744-1087



Conditions

System : Chromaster HPLC system (HITACHI)

Column : InertSustain C30 (GL Sciences Inc.)
(5 μ m, 250 x 4.6 mm I.D.)

Column Cat. No. : 5020-17145

Eluent : A) CH₃CN
B) H₂O
A/B = 60/40, v/v

Flow Rate : 1.0 mL/min

Col. Temp. : 30 °C

Detection : UV 360 nm

Injection Vol. : 20 μ L

Sample : Standard

Analyte:

1. DNPH-Acetaldehyde
2. DNPH-Propionaldehyde
3. DNPH-Isobutyraldehyde
4. DNPH-*n*-Butyraldehyde
5. DNPH-Methylethylketone (MEK)
6. DNPH-Isovaleraldehyde
7. DNPH-*n*-Valeraldehyde
8. DNPH-4-Methyl-2-pentanone (MIBK)

(100 μ g/L each)