

AVON

CAMPAIGN 22

CELEBRATE
WITH A FREE
ORNAMENT
details inside



Holiday Has Arrived



free

HOLIDAY EXCLUSIVE

Sugar Plum Fairy Ornament

with any \$50 holiday home décor purchase, pages 3–11.

\$7.99 VALUE

LIMITED QUANTITIES.

The Queen of the Land of Sweets dances in our dreams and brings magic to everything. Wood, polyester, fabric. 1¾" L x 1⅜" W x 5⅝" H.

Not sold separately.

❖ **Christmas Gift Workshop Tabletop**

Santa and the elves are busy making gifts for all the good boys and girls! Lights up. On/off switch for lights, sound and movement or lights with movement. Takes three AA batteries (not included). 4.5V 5000mA DC jack (adapter not included) Polyresin. 7¼" L x 5½" D x 8⅝" H. Imported.

118-614

reg. \$64.99

\$49.99



**GIFTS TAKE A RIDE
DOWN THE SLIDE!**

Gift Shop Central

Time to deck the halls. Welcome the season with Santa scenes and wonderland dreams!



**PLAYS EIGHT
HOLIDAY TUNES:**

- *Jingle Bells*
- *We Wish You a Merry Christmas*
- *Silent Night*
- *Deck the Halls*
- *Joy to the World*
- *The First Noel*
- *Hark! The Herald Angels Sing*
- *O Christmas Tree*

❖ **Light-Up Shelf Sitter**

Santa and his snowman buddy are ready for some festive fun and to add holiday cheer to your home. Cheeks light up. On/off switch. Takes two AA batteries (not included). Bean bag bottom provides stability. Polyester.

Each, 9" W x 5" D x 25" H.

Imported.
reg. \$32.99

\$24.99 each 💡

Santa
119-022

Snowman
120-242



Festive Friends





❖ **Santa Hanging Door and Wall Light-Up with Sound**

Who better to welcome your guests during the holiday season than Jolly Ol' Saint Nick? Motion sensor Santa greets guests and says: "Ho, Ho, Ho! Merry Christmas!" Sign lights up. Hangs on door or wall. Can be used indoors or in a covered outdoor area. On/off switch. Takes two AA batteries (not included). MDF, polyester. 12" L x 4½" D x 18" H. Imported.

118-820

reg. \$44.99

\$34.99  

❖ **Three-Figure Shelf Sitter**

Our Christmas trio comes bearing gifts! Santa, Elf and Reindeer welcome the season with holiday cheer. Lights up. On/off switch. Takes two AA batteries (not included). MDF base provides stability. Polyester. 14" L x 4" D x 12" H. Imported.

120-257

reg. \$49.99

\$39.99 



Sweet on Santa



*plays eight
holiday tunes*

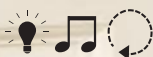
❖ Candy Shop Tabletop

Santa pops out to welcome one and all to this sugar wonderland! Lights up. On/off switch for lights, sound and movement or lights with movement. Takes three AA batteries (not included). 4.5V 5000mA DC jack (adapter not included). Plastic. 9 $\frac{3}{8}$ " L x 6 $\frac{1}{8}$ " D x 10 $\frac{1}{2}$ " H. Imported.

123-309

reg. \$69.99

\$54.99







plays eight holiday tunes

❖ **Farm Fresh Tree Shop Tabletop**
 Nothing says Christmas like picking out your Christmas tree, fresh from the farm! Lights up. On/off switch for lights or lights with sound. Takes three AAA batteries (not included). Plastic, wire. 7¼" L x 4½" D x 5⅞" H. Imported.

120-276
 reg. \$58.99

\$44.99  

❖ **Christmas Ski Park Tabletop**

Let's shred some powder! Snowboarder rides down the slope and heads back up for more thrills. Lights up. On/off switch for lights, sound and movement or lights with movement. Takes three AA batteries (not included). Polyresin, plastic. 10⅞" L x 5⅝" D x 5⅞" H. Imported.

123-988
 reg. \$64.99

\$49.99



plays eight holiday tunes



❖ **Holiday Memories Pewter Ornament**

Trim your tree with our annual collectible ornament. Embossed with the 2024 Avon Fine Collectibles stamp on back. Includes velvet keepsake pouch and easy-to-hang tassel. 2¼" L x 2" W. Pewter, acrylic, polyester. Imported.

123-370
 reg. \$19.99

\$15.99

Joy to the World



❖ **Old World Holy Family Figurine**

Traditional vintage-style Nativity in glistening gold and white with pearly accents. Polyresin, acrylic. 4" L x 4" W x 8" H. Imported.

126-217

reg. \$22.99

\$16.99

❖ **Wooden Silent Night Light-Up Sign**

Rustic seasonal block sign in a stacked design with Holy Family, Christmas star and "Silent Night, Holy Night." With warm white string lights. On/off switch. Takes two AAA batteries (not included). MDF. 12" L x 2" W x 11½" H. Imported. **127-778**

reg. \$44.99

\$34.99





❖ **Old World Nativity Story Ornaments-Three Pack**

Trio of traditional ornaments tell the story of the Nativity. The Holy Family, shepherd with sheep and wise men are adorned in glistening gold and white with pearly accents and goldtone star charm. Includes matching gold string for hanging. Polyresin, acrylic.

Each, 4" L x 3/4" W X 10 1/4" H. Imported.

127-763

reg. \$24.99

\$19.99 set of 3

❖ **Wooden Lighted Nativity**

Sculpted Nativity scene with back-lit filigree design creates a peaceful silhouette of the Holy Family. With warm white string lights. On/off switch. Takes two AAA batteries (not included). MDF. 13 1/4" L x 2" W x 8 7/8" H. Imported.

125-096

reg. \$49.99

\$39.99



Treasured Traditions



❖ **Old World Santa Figurine**

Traditional vintage-style Santa and owl friend celebrate the season in glistening gold and white. Polyresin.

5½" L x 4½" W x 10" H. Imported.

128-812

reg. \$24.99

\$19.99



❖ **Frosty Glow Light-Up Tree**

Light up the season with Avon's iconic vintage-inspired Christmas tree. Warm lights twinkle from within providing a soft glow. On/off switch. Takes three LR44 button cell batteries (included). Ceramic.

4¾" L x 3½" W x 7⅞" H. Imported. **129-732**

reg. \$19.99

\$14.99



❖ **Ceramic Angels Figurines-Three Pack**

Hark! Our trio of herald angels gleam with shimmery stars that are lit from within. Goldtone accents. Each figurine has an on/off switch and takes three LR44 button cell batteries (included). Ceramic. Each, 12" L x 2 7/8" W x 4 5/8" H. Imported. 125-134 reg. \$42.99

\$32.99 set of 3



❖ **Winter Express Light-Up Train**

All aboard the winter express to Christmas. Warm lights twinkle from within, providing a soft glow. Each car has an on/off switch and takes three LR44 button cell batteries (included). Ceramic. Total train: 12" L x 2 7/8" W x 4 5/8" H. Imported. 128-975

reg. \$32.99

\$24.99



NEW! LIMITED EDITION

necklace and
earring set



**Ocean Blue
Mirage Collection**
Blue glass stones
set in silvertone.

**Necklace
and Earring Set**
Y-necklace, 16 1/2" L
with 3 1/2" extender.
Lobster closure.
Pierced drops, 1" L.
107-917
reg. \$29.99

\$22.99 the set

3-Stone Ring
CZ stone accents.
Approx. 3/4" W.
6 107-921
8 107-993
10 108-052
reg. \$12.99

\$9.99



Blue/Silvertone 107-630



Red/Goldtone 108-124



Green/Goldtone 107-697

All Decked Out

Jewel Tone Drop Earrings

Colored glass stones with CZ accents. 2½" L. Pierced. reg. \$16.99

\$12.99 each

Jewel Tone Stretch Ring

¾" L. Stretches to fit most. reg. \$12.99

\$9.99 each



Blue/Silvertone 108-143



Red/Goldtone 107-850



Green/Silvertone 108-158



Black/Goldtone 107-276

Merry & Bright



necklace, earring
and bracelet set

Snowfall Whispers

3-Piece Set

Silvertone with sapphire- and aquamarine-colored glass stones. Necklace, 16½" L with 3½" extender. Pierced studs, approx. ½" L. Bracelet, one size fits most.

108-215

reg. \$22.99

\$16.99 the set



necklace and
earring set

Dazzling Ribbon

Pearly Collection

Pearlesque beads with goldtone accents, and bow with clear stone accents.

Necklace and Earring Set

Necklace, 16½" L with 3½" extender. Bow, 1¼" L. Lobster closure. Pierced drops, approx. 1" L. **052-048** reg. \$22.99

\$16.99 the set

Bracelet

Stretches to fit most. Bow, 1¼" L. **052-105** reg. \$16.99

\$12.99

NEW! LIMITED EDITION

**Satin Bow
Collection**

White pearlesque
beads with black
satin ribbon.

**Necklace and
Earring Set**

16½" L with 3½"
extender. Pearly
studs, ½" diam.
Pierced. **108-162**
reg. \$24.99

\$19.99 the set

Bracelet

Stretches to fit
most. **108-177**
reg. \$16.99

\$12.99

necklace and
earring set



necklace and earring set

Bracelet
7 1/4" L with 1" extender.
Lobster closure.
Charms, 3/4" L.
046-266 reg. \$16.99
\$12.99

Santa's Workshop Charm Collection
12 days of Christmas motif charms with glass faceted beads set in silvertone.

Necklace and Earring Set
Necklace, 17" L with 3 1/2" extender. Lobster closure.
Charms, 3/4" L. Pierced drops, 3/4" L.
046-180 reg. \$22.99
\$16.99 the set



Snowflake 046-725

Cozy Wishes Charm Bracelet
Goldtone two-row chain bracelet with colored enamel charm. 7 1/4" L with 1" extender. reg. \$16.99
\$12.99 each

Frosty Winter Earrings
Clear stone accents. 1" L. Pierced. reg. \$12.99
\$9.99 each pair

Snowman 046-710

Stocking 046-687

Christmas Tree (green enamel)/ Goldtone
046-672

Reindeer (goldtone accents)/ Silvertone
046-577

Penguin (black and red enamel)/ Silvertone
046-505

NEW! LIMITED EDITION

Vibrant Enamel Jewel Collection
Goldtone with colorful enamel stations adorned with a coordinating colored stone.

Necklace

Two-layer necklace: shortest, 16½" L; longest, 18" L with 3½" extender. **108-330**
reg. \$19.99

\$14.99

Bracelet

7¼" L with 1" extender. **109-833**
reg. \$12.99

\$9.99

Earrings

Pierced drops, approx. 1¼" L. **110-082**
reg. \$12.99

\$9.99

Seasonal Sentiments

NEW! LIMITED EDITION

Divine Guardians Necklace and Earring Set
 Necklace, 16½" L with 3½" extender. Pendant, ranges from 1"-1¼" L. Lobster closure. Pierced studs, ½" L. reg. \$16.99
\$12.99 each set



Heart/Goldtone 047-831



Cross/Silvertone 047-210

necklace and earring sets



Angel Wings/Goldtone 047-167

Divine Birthstone Cross Necklace

Colored glass stones set in silvertone. 16½" L with 3½" extender. Lobster closure. Pendant, 1" L. reg. \$12.99

\$9.99 each

					
January 048-015	February 048-072	March 048-087	April 048-216	May 048-220	June 048-350
					
July 048-364	August 048-440	September 048-508	October 048-603	November 048-728	December 048-785



Festive Fireball Jewel Collection

Glass rhinestones with acrylic pearly beads.

Necklace

16½" L with 3½" extender.
Lobster closure.
reg. \$19.99

\$14.99 each

Bracelet

Adjustable pull-cord bracelet; one size fits most.
reg. \$16.99

\$12.99 each

Red/Silvertone
048-823

Ivory-colored/Goldtone
048-952

Green/Goldtone
048-900

Ivory-colored/Goldtone
049-155

Red/Silvertone
049-011

Green/Goldtone
049-102

Jingle Ornament Charm Necklace

Shaky stone pendant with charms set in goldtone.
16½" L with 3½" extender.
Lobster closure. Pendant, 1" L.
049-208
reg. \$16.99


\$12.99

Stay Warm Wishes Necklace

Goldtone necklace with charms.
23½" L with 3½" extender.
Lobster closure. Pendant, 2" L.
049-227
reg. \$16.99

\$12.99

Holly
Jolly
Jewelry



genuine onyx stone

**Stainless Steel
Faceted Onyx
Halo Collection**
Genuine onyx
stone with clear
stone accents
set in stainless
steel.

Necklace
17" L with 1"
extender. Pendant,
 $\frac{3}{4}$ " W x $\frac{1}{2}$ " L. 3-carat
weight equivalent.
110-120
reg. \$44.99
\$34.99

Drop Earrings
1" L. 2-carat
total weight
equivalent.
Pierced.
113-120
reg. \$42.99
\$32.99

Ring
 $\frac{3}{4}$ " W x $\frac{1}{2}$ " L. 3-carat
weight equivalent.
5 110-226 8 110-647
6 110-340 9 112-970
7 110-355 10 112-999
reg. \$42.99
\$32.99

NEW! LIMITED EDITION

Feather
(.04-carat
total weight
equivalent)
052-162

Snowflake
(1.12-carat
total weight
equivalent)
052-029

Festive Finery

Heart Key
(.08-carat
total weight
equivalent)
052-143

Sterling Silver CZ Necklace
CZ stone accents set in .925 sterling
silver. 17" L with 1" extender. Pendant,
approx. 1" L. Spring-ring closure.
reg. \$64.99

\$49.99 each



Together Time

NEW! LIMITED EDITION

Hers Minimalist Bracelet Watch

Silvertone bracelet watch with stone-bezel case and faux sub-dial. 7 1/4" L with 40mm diam. case. Water-resistant to 3 ATM.

113-149
reg. \$58.99
\$44.99



His Minimalist Bracelet Watch

Silvertone bracelet watch and case with faux sub-dial. 8" L with 46mm diam. case. Water-resistant to 3 ATM.

113-134
reg. \$58.99
\$44.99

PRAYER READS:

*"Fear not, for I am with you; be not dismayed, for I am your God. I will strengthen you, I will help you, I will uphold you with my righteous right hand."
Isaiah 41:10*



set of 2 bracelets



Men's Stainless Steel Grace Collection
Set in stainless steel.

Angelic Necklace
Chain (with CZ charm),
24" L. Angel wing pendant,
2" L. Lobster closure.
115-099
reg. \$39.99
\$29.99

Guardian Necklace
Chain (with CZ charm), 24" L.
Dog tag pendant with Bible
verse, Isaiah 41:10; 1¾" L.
Lobster closure. 115-103
reg. \$39.99
\$29.99

Bond with Grace Bracelet Set
Set of two: 6mm stainless steel
chain with CZ charm and black
leatherlike bracelet. Each, 8" L.
115-180
reg. \$39.99

\$29.99 the set

NEW! LIMITED EDITION

Oh, How We Adorn Him

**Men's Faux
Chronograph Jet Watch**
Gunmetal-colored
bracelet watch with faux
sub-dial. 8 1/2" L with
40mm diam. case.
Water-resistant to 3 ATM.
113-388
reg. \$58.99
\$46.99

set of 2
necklaces



**Men's Stainless Steel
Beaded Jet Collection**
Black beads and stainless steel.

set of 2
bracelets

Necklace Set
Set of two: stainless steel chain
with CZ charm and one with
8mm beads. Each, 20" L.
Lobster closure. **114-475**
reg. \$22.99

\$16.99 the set

Bracelet Set
Set of two: stainless steel chain
with CZ charm and one with 10mm
beads. Each, 8 1/2" L. **114-532**
reg. \$16.99

\$12.99 the set

Toasty Are We



❖ Plaid Slippers

Red plaid knit with ivory faux-shearling lining and footbed. Rubber outsole. Man-made materials. Imported.

S(5-6) **094-714** L(9-10) **095-653**
M(7-8) **095-620** XL(11-12) **095-687**
reg. \$22.99

\$16.99

❖ Scottie Slippers

Ivory faux-shearling with holiday Scottie dog motif. Red faux-shearling lining and footbed. Rubber outsole. Man-made materials. Imported.

S(5-6) **095-691** L(9-10) **095-730**
M(7-8) **095-706** XL(11-12) **096-148**
reg. \$19.99

\$14.99

❖ **Plaid 2-Piece PJ**

Red plaid soft knit set. Top with notched collar, button-front placket and cuffed sleeves. Matching bottoms with elastic waistband. Polyester/spandex. Center back length: 25½" on M; 28" on 1X. Inseam: 29" on all sizes. Machine wash and dry. Imported.

XS(0-2) **096-650**S(4-6) **096-721**M(8-10) **097-068**L(12-14) **097-440**XL(16) **097-455**1X(18W-20W) **097-460**2X(22W-24W) **097-474**3X(26W-28W) **102-069**

reg. \$49.99

\$39.99❖ **Scottie Nightshirt**

Grey soft knit fabric with holiday Scottie dog print and front placket. Polyester/spandex. Center back length: 33½" on M; 35" on 1X. Machine wash and dry. Imported.

XS(0-2) **096-459**S(4-6) **096-478**M(8-10) **096-516**L(12-14) **096-554**XL(16) **096-569**1X(18W-20W) **096-607**2X(22W-24W) **096-626**3X(26W-28W) **096-645**

reg. \$39.99

\$29.99

2-PIECE
SET



Let it glow!

Let it glow!

Let it glow!



**Beyond Glow Snail Mucin Complex
Serum & Cream Duo**

Includes box with:

- **Snail Mucin Complex + Panthenol Cream**
Helps lock in moisture. 3.7 fl. oz.
- **Snail Mucin Complex + Niacinamide Serum**
Visibly evens tone and strengthens
the skin barrier. 3.3 fl. oz.

\$39.99

BOXED SET OF 2

050-174

\$68 VALUE



Beyond Glow Vitamin C Serum & Galvanic Booster Duo

Includes box with:

- **Vitamin C 6% + Ferulic Acid Serum**
Visibly boosts brightness. 1 fl. oz.
- **Galvanic Booster Device**
Boosts absorption of vitamin C by 2X*. Red LED light. Auto turn on/off. Two cell batteries (included).

\$55.99
BOXED SET OF 2
050-208
\$98 VALUE



Beyond Glow Niacinamide 10 X 10 Duo

Includes box with:

- **Niacinamide 10% + Panthenol Serum**
Helps improve even tone and elasticity. 1 fl. oz.
- **Niacinamide 10% All-in-One Cream**
Visibly brightens skin and reduces fine lines. 3.7 fl. oz.

\$39.99
BOXED SET OF 2
050-250
\$76 VALUE

*Evaluated by Dongduk Women's University Industry-Academia Cooperation (ex vivo test, DPPH, Oct. 13 to 24, 2023).

NEW! LIMITED EDITION

Anew Ultimate Gift Set

Three full-size moisturizers:

- **Anew Ultimate Multi-Performance Day Cream Broad Spectrum SPF 25**
1.7 oz. net wt.
- **Anew Ultimate Multi-Performance Night Cream**
1.7 oz. net wt.
- **Anew Ultimate Multi-Performance Eye System**
Cream, .5 oz. net wt.
Elixir, .09 oz. net wt.

\$59.99

3-PIECE SET

with a 5-pack of gift bags

050-485

\$131 VALUE

Anew Platinum Gift Set

Three full-size moisturizers:

- **Anew Platinum Day Cream Broad Spectrum SPF 25**
1.7 oz. net wt.
- **Anew Platinum Night Cream**
1.7 oz. net wt.
- **Anew Platinum Eye & Lip Cream**
Dual applicator.
.5 oz. net wt.

\$59.99

3-PIECE SET

with a 5-pack of gift bags

050-265

\$131 VALUE



Give Radiantly



**get a 5-pack of gift bags (\$5 value)
with any gift set purchase,
pages 30-33**

Each gift bag, 8" W x 3¼" D x 10½" H.
Paper with ribbon handle.



NEW! LIMITED EDITION

Winter Refreshments



Organist Apple Cider Vinegar For Hair Gift Set
Cleanse, clarify and hydrate scalp and hair. With apple cider vinegar extract, ginger, organic lemon water, cooling menthol and enriching biotin for a healthy-looking shine. Formulated without silicone oil or sulfates.

\$33.99
3-PIECE SET
with a 5-pack of gift bags
050-930
\$62 VALUE

Includes:

Clarifying Shampoo
For oily hair. 16.9 fl. oz.

Clarifying Conditioner
Great for oily, dull hair. 16.9 fl. oz.

Clarifying Water Treatment
Rinse-out treatment infused with collagen and hyaluronic acid. Helps locks look naturally soft, shiny and healthy. 6 fl. oz.

Organist Apple Cider Vinegar For Body Gift Set

Exfoliate, detox, nourish and refresh your skin. With apple cider vinegar extract, ginger, cooling menthol and enriching biotin. Includes:

Avon Shower Brush

Brush helps to remove dead skin cells as it cleanses. With massage nubs. Non-slip, comfort handle.

Exfoliating Body Scrub

With panthenol and AHA/BHA/PHA. 6.7 fl. oz.

Body Wash

For normal to oily skin. With panthenol. 16.9 fl. oz.

\$28.99

3-PIECE SET

with a 5-pack of gift bags

051-147

\$53 VALUE



**get a 5-pack of gift bags (\$5 value)
with any gift set purchase,
pages 30–33**

Each gift bag, 8" W x 3¼" D x 10½" H.
Paper with ribbon handle.



Spa la la la!

Avon Senses Frosted Vanilla Honey Cake Collection

Celebrate the season with the sweet aroma of freshly baked cake as you indulge in the warm, decadent fragrance of frosted vanilla with a drizzle of golden honey. Leaves your hair and body delightfully scented.

Body Lotion

Moisture-rich body lotion with smoothing shea butter. 8 fl. oz.

189-702 reg. \$18

\$14.99

Hair & Body Mist

Refreshing mist with soothing aloe vera. 8 fl. oz.

189-808 reg. \$18

\$14.99

Bubble Bath

Luxurious bubbles gently cleanse. 24 fl. oz.

189-850 reg. \$16

\$12.99

\$32.99

3-PIECE SET

with a 5-pack of gift bags

189-717

\$57 VALUE



**get a 5-pack of gift bags (\$5 value)
with any gift set purchase,
pages 34-35**

Each gift bag, 8" W x 3¼" D x 10½" H.
Paper with ribbon handle.

**Avon Senses Jasmine Blossom
Holiday Collection**

Relax in the fantasy of a beautiful flower garden as the fresh, elegant fragrance of jasmine, lily and ylang-ylang fills the air. Leaves your body and hair delightfully scented.

Body Lotion

Moisture-rich with shea butter and vitamin E. 8 fl. oz.
731-446 reg. \$18

\$14.99

Hair & Body Mist

A refreshing mist, with soothing aloe vera extract. 8 fl. oz.
731-450 reg. \$18

\$14.99

Bubble Bath

Luxurious bubbles gently cleanse. 24 fl. oz.
731-431 reg. \$16

\$12.99

\$32.99

3-PIECE SET

with a 5-pack of gift bags
049-690
\$57 VALUE

All dermatologically tested. Body Lotion and Hair & Body Mist are formulated without parabens, mineral oil, phthalates and dyes.

NEW! LIMITED EDITION



**Skin So Soft Pure Nature
Holiday Gift Set**

Go clean and green. Over 94% naturally derived. Includes:

Revitalizing Body Cream

Smooth on moisturizing cream after bath or shower. 12 fl. oz.

Revitalizing Shower Gel

Richly lathering gel. 12 fl. oz.

Revitalizing In-Shower Body Lotion

Hydrating and softening lotion. Apply onto wet skin after shower or bath. 8 fl. oz.

\$36.99

3-PIECE SET

with a 5-pack of gift bags
049-451
\$67 VALUE

Shower Gel and Body Cream bottles: 95% post-consumer recycled material, excluding cap. Body Lotion tube: 55% post-consumer recycled material, excluding cap.

NEW! LIMITED EDITION

❖ **LYRD Candle**

Gives 30 hours of burn time.
7 oz. 3 1/8" diam. x 3 1/2" H.
Glass jar, soy-blend wax.
Assembled in USA.
reg. \$24

\$18.99 each

❖ **Get Roasted**

Chestnuts roasting on
an open fire, Jack Frost
nipping at your nose!
Let the holiday merriment
begin with welcoming
notes of aromatic roasted
chestnuts, sugary cinnamon
and whipped vanilla cream.
050-686

❖ **The Snuggle Is Real**

Grab the hot cocoa and a
good book... 'Tis the season
to snuggle up and get cozy
by the fire with notes of rich
bourbon, vanilla extract and
crispy, earthy white woods.
050-724

❖ **Oh My Gourd!**

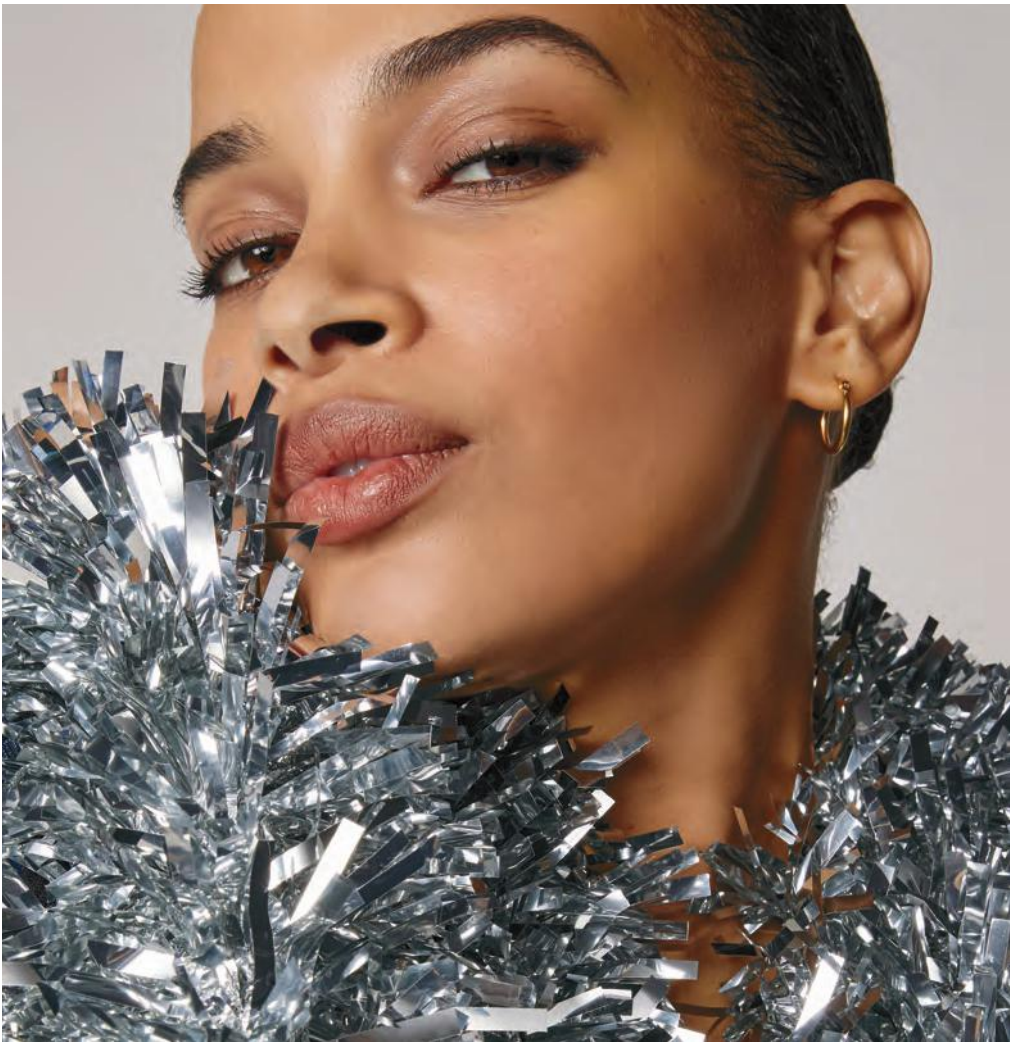
Fall's favorite mascot gets
the pie treatment with
delicious spicy notes of
sweet pumpkin, buttery
pecan and maple syrup.
050-652

Candles not intended to heat or cook food.
Never leave burning candles unattended.
Keep away from children and pets.



Home Sweet Home





**ANEW ULTIMATE +
RICE WATER BRIGHT SET**

Anew Ultimate Multi-Performance Eye System
Cream, .5 oz. net wt.
Elixir, .09 oz. net wt.

Anew Ultimate Multi-Performance Night Cream
1.7 oz. net wt.

**Rice Water Bright Rice Bran
Gentle Exfoliating Cleanser**
10.1 fl. oz.

3-PIECE SET

\$48.99

\$103 VALUE

115-801



HYDRA FUSION SET

Anew Hydra Fusion Gel Cream
1.7 oz. net wt.

**Anew Hydra Fusion
1.5% Hyaluronic Acid Serum**
1 fl. oz.

**Anew Hydra Fusion
De-Puffing Eye Serum**
.5 fl. oz.

3-PIECE SET

\$49.99

\$112 VALUE

116-353



EYES + FACE SET

Anew Platinum Eye & Lip Cream
Dual applicator. .5 oz. net wt.

Anew Platinum Age Delay Serum
1 fl. oz.

**Anew Hydra Fusion
Cleansing Micellar Water**
10.1 fl. oz.

3-PIECE SET

\$45.99

\$101 VALUE

554-496



CLEANSE, TONE, BRIGHTEN SET

**Isa Knox Anew Clinical Collagen Booster
Firming Cream**
1.7 fl. oz.

**Isa Knox Anew Clinical Collagen Booster
Microneedling Polisher**
1.7 fl. oz.

Rice Water Bright Foaming Cleanser
10.1 fl. oz.

3-PIECE SET

\$45.99

\$98 VALUE

116-736



**MOISTURE THERAPY
BALANCE + SOOTHE SET**

**Moisture Therapy
Balance + Soothe Body Wash**
13.2 fl. oz.

**Moisture Therapy
Balance + Soothe Body Lotion**
13.2 fl. oz.

Exfoliation Mitt
Microfiber jacquard,
with nylon spandex cuff.

3-PIECE SET

\$33.49

\$61 VALUE

380-678



COZY VANILLA & COCONUT SET

**Cozy Vanilla & Coconut
Hand Soap**
10.1 fl. oz.

**Cozy Vanilla & Coconut
Hand Cream**
2.5 fl. oz.

**Cozy Vanilla
& Coconut Body Lotion**
8 fl. oz.

3-PIECE SET

\$21.99

\$39 VALUE

553-083



**SKIN SO SOFT
SOFT & SENSUAL SET**

Soft & Sensual Shower Gel
5 fl. oz.

Soft & Sensual Bath Oil
16.9 fl. oz.

Soft & Sensual Body Lotion
11.8 fl. oz.

3-PIECE SET

\$23.99

\$47 VALUE

379-625



FOOT WORKS SET

Foot Works Deodorizing Spray
3.5 oz. net wt.

**Foot Works Overnight
Renewing Cream**
3.4 fl. oz.

Foot Works Pedicure Kit
Case, 3½" L x 4¾" W.

3-PIECE SET

\$20.49

\$38 VALUE

380-185



RARE PEARLS SET

soft floral
Magnolia, white pepper
and rosewood.

Eau de Parfum
1.7 fl. oz.

Body Lotion
6.7 fl. oz.

Hand Cream
2.5 fl. oz.

3-PIECE SET

\$24.99

\$45 VALUE

074-959



LYRD HONEYSUCKLE BLOSSOM SET

soft floral
Apple blossom, honeysuckle
nectar and vanilla orchid.

Eau de Parfum
1.7 fl. oz.

Hair & Body Mist*
3.25 fl. oz.

2-PIECE SET

\$26.99

\$48 VALUE

553-394

*Packaging may vary.



FAR AWAY SET

amber floral
Freesia, jasmine and amber.

Eau de Parfum
1.7 fl. oz.

Body Lotion
6.7 fl. oz.

Body Scrub & Wash
6.7 fl. oz.

3-PIECE SET

\$27.99

\$53 VALUE

074-724





WILD COUNTRY SPLASH SET

fresh aromatic
Lavender, coriander seed
and sandalwood.

Aftershave Splash
4 fl. oz.

Hair & Body Wash
5 fl. oz.

**Roll-On Anti-Perspirant
Deodorant**
2.6 fl. oz.

3-PIECE SET

\$14.99

\$29 VALUE

553-409



Isa Knox Anew Clinical
Revitalize and Reveal
Resurfacing Lotion for Body

FREE

WITH ANY \$50 SKIN CARE PURCHASE,
PAGES 47-73. \$34 VALUE.

LIMITED QUANTITIES.

Sold separately on page 65.





Glisten up

Add luster to your lips with
New Beyond Glow Lipcerin Lip Care

Lip service: see the results...

SKIN CARE



55% more exfoliated lips
 30% shorter lip lines*
 15% immediate increase of lip volume
 24% softer lips*
*In 2 weeks, based on using 3x a day.

This image was generated using artificial intelligence.

Nourish

Beyond Glow Lipcerin Intensive Nourishing Lip Care
 reg. \$22
\$17.99



An intensive, glistening formula that nourishes dry lips with moisture. With a plumping peptide, moisture-enhancing glycerin and smoothing shea butter. Clear finish. .5 fl. oz.



Plump

Beyond Glow Lipcerin Plump and Cool Lip Care
 reg. \$22
\$17.99



An intensely moisturizing, glistening formula that visibly plumps and softens lips. With cooling menthol for an instant visible increase in lip volume. Clear finish. .5 fl. oz.



Tint

Beyond Glow Lipcerin Hydrating Tinted Lip Care
 reg. \$22
\$17.99



An intensely moisturizing, glistening formula that visibly softens lips and adds a glossy hint of color. With a plumping peptide, moisture-enhancing glycerin and smoothing shea butter. .5 fl. oz.



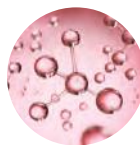
Key ingredients



CERAMIDE
 Helps protect skin's moisture barrier to keep lips looking firm and smooth



SEA BUCKTHORN
 Known to be a powerful, natural antioxidant and help with skin health



PHA
 A gentle exfoliant that attracts water molecules to moisturize

How to use

Remove cap and twist the bottom of the container counterclockwise until product comes through the center. Apply to lips.



The power of *Niacinamide*



Beyond Glow Niacinamide 2% Cream Mist

Deliver an instant boost of hydration to your skin with this creamy, fast-absorbing spray-on serum that can be used under or over makeup for glowing skin anytime, anywhere. Infused with niacinamide. 3.3 fl. oz. **617-365** reg. \$34

\$25.99



Beyond Glow Niacinamide 10% + Panthenol Serum

Helps improve even tone and elasticity. Niacinamide, also known as vitamin B3, helps even skin tone and replenish the skin barrier. Panthenol, also known as provitamin B5, helps lock in moisture. 1 fl. oz. **255-612** reg. \$38

\$29.99



Beyond Glow Niacinamide 10% All-in-One Cream

Nighttime facial cream that helps enhance your healthy-looking glow. All-in-one facial cream that visibly brightens skin, reduces fine lines and helps support the skin barrier. Contains retinol. 3.7 fl. oz. **617-350** reg. \$38

\$29.99

serum + cream
together
3X
Reduction in the
look of pores*

When used together,
serum + cream were clinically tested to:

Reduce the look of pores by 44%[†]

[†]Reduction of pore volume after 4 weeks of use compared to baseline.

*Versus using the serum alone, based on a clinical study.

NEW



Beyond Glow Niacinamide 10% Neck Firming Cream

Nighttime hydrating neck and chest cream formulated with tried-and-true ingredients niacinamide, shea butter and squalane derived from olive oil, plus panthenol, which helps strengthen the skin barrier. Contains retinol. 3.3 fl. oz. **052-249** reg. \$38

\$29.99

NEW



Beyond Glow Niacinamide 10% Eye Cream

Nighttime moisturizing eye cream formulated with tried-and-true ingredients niacinamide, caffeine, plus panthenol, which helps strengthen the skin barrier. Contains retinol. 1 fl. oz. **052-272** reg. \$24

\$19.99

Your Niacinamide regimen

+ Whenever your skin needs hydration!



Step 1.
Niacinamide
2% Cream Mist



Step 2.
Niacinamide
10% + Panthenol Serum



Step 3.
Niacinamide 10%
All-in-One Cream



Step 4.
Niacinamide 10%
Neck Firming Cream



Step 5.
Niacinamide 10%
Eye Cream

The New Star Ingredient: SNAIL MUCIN Complex



Clinically tested to
improve skin tone
and brightness

**Beyond Glow
Snail Mucin Complex
+ Panthenol Cream**

Moisturizes while it visibly improves texture and elasticity. With snail mucin complex and panthenol, which helps lock in moisture.

3.7 fl. oz. 255-536 reg. \$34

\$25.99

**Beyond Glow
Snail Mucin Complex +
Niacinamide Serum**

Visibly brightens, moisturizes and retexturizes. With snail mucin complex and niacinamide, also known as vitamin B3, which helps even skin tone and strengthen the skin barrier.

3.3 fl. oz. 255-574 reg. \$34

\$25.99

Our cream and serum, formulated with snail mucin complex, moisturize and help visibly brighten skin with a clear, cushiony yet fast-absorbing texture that disappears into the skin while plumping it up with hydration.



Hydrate

Beyond Glow Hyaluronic Acid 1.5% + Ferulic Acid Serum

Hyaluronic acid, known as a "moisture magnet," helps infuse skin with instant and lasting hydration. Ferulic acid, a powerful antioxidant, helps defend skin from environmental stressors. 1 fl. oz.

255-593 reg. \$38

\$29.99



Brighten

Clinically Tested to Improve Skin Radiance in 3 Days


Beyond Glow Vitamin C 6% + Ferulic Acid Serum


Vitamin C visibly improves radiance for glowing skin. Ferulic acid, a powerful antioxidant, helps protect skin from environmental stressors. 1 fl. oz.

255-589 reg. \$38

\$29.99

Q What makes Beyond Glow Vitamin C serum so special?

A  **125-hour antioxidant effect***

 **4X stronger skin barrier in 2 weeks†**

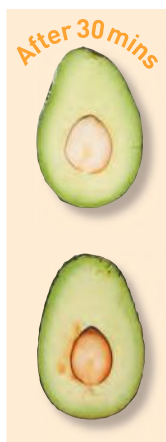
*Evaluated by in vitro test.

†Based on stripped skin instrumental study on 31 subjects.

Just look at the antioxidant effect!

of Beyond Glow Vitamin C 6% + Ferulic Acid Serum

With
Beyond
Glow
Serum



Without
Beyond
Glow
Serum



Galvanize your results

3-in-1:
Red LED light
Galvanic current
Vibration

Easy-grip
handle

Turns on
automatically
when it touches
the skin

3 mins
to revitalized,
brighter skin

Beyond Glow Galvanic Booster Device

Give your skin a spa treatment at home in three minutes. Red LED light helps tone the appearance of skin texture, enhances your radiant glow and visibly promotes skin health. On-the-go compact design. Automatically turns on and off. Uses two cell batteries (included). **255-627** reg. \$60
\$49.99

Boosts absorption
of vitamin C
by 2x*

Use with Vitamin C 6%
+ Ferulic Acid Serum for optimal results.

*Evaluated by Dongduk Women's University Industry-Academia Cooperation
(ex vivo test, DPPH, Oct. 13 to 24, 2023)



CLEANSERS with benefits

Complete your Beyond Glow regimen with cleansers that help skin feel smoother and reveal a healthy-looking glow.

93%
Said skin looked brighter after 1 use[†]



Cleanse + Brighten

For Normal Skin
With **Vitamin C & AHA**

Beyond Glow Vitamin C + AHA Facial Cleanser

A hydrating facial cleanser that helps enhance your healthy-looking glow, leaving skin feeling soft and smooth. 5 fl. oz. **628-450** reg. \$14 **\$10.99**

93%
Said skin looked smoother after 1 use[†]



Cleanse + Exfoliate

For Oily Skin
With **Salicylic & Citric Acids**

Beyond Glow Salicylic + Citric Acids Facial Cleanser

An exfoliating facial cleanser that helps enhance your healthy-looking glow, leaving skin feeling soft and smooth. 5 fl. oz. **627-798** reg. \$14 **\$10.99**

96%
Said skin felt hydrated after 1 use[†]



Cleanse + Hydrate

For Dry Skin
With **Hyaluronic Acid & Niacinamide**

Beyond Glow Hyaluronic Acid + Niacinamide Facial Cleanser

A hydrating facial cleanser that helps enhance your healthy-looking glow, leaving skin feeling soft and smooth. 5 fl. oz. **627-821** reg. \$14 **\$10.99**

[†]Based on a consumer-perception study of 30 subjects.

face the day with supreme radiance

100%

agreed skin looks more youthful, firmer and re-contoured



NEW

Anew Ultimate Supreme Radiant Firming Cream

A lightweight moisturizer perfect for daytime use. With panthenol, niacinamide and peptides to help boost hydration, visibly restore brightness and firm skin contours. With bakuchiol, an alternative to retinol, to visibly reduce wrinkles and discolorations without irritation. Clinically tested to improve skin texture and elasticity. 1.7 fl. oz. 835-052 reg. \$60

\$39.99



Anew Ultimate Multi-Performance Night Cream
It works while you sleep to revive and recreate the look of youthful skin.
1.7 oz. net wt.
763-311 reg. \$42
\$27.99



Anew Ultimate Night Repair Serum
See improved tone and texture. With peptides, licorice, hyaluronic acid and niacinamide. Use PM before moisturizer.
1 fl. oz.
625-355
reg. \$45
\$28.99



Anew Ultimate Multi-Performance Day Cream Broad Spectrum SPF 25
See wrinkles fade and youthful vibrance return.
1.7 oz. net wt.
763-307
reg. \$42
\$27.99



Anew Ultimate Supreme Advanced Performance Eye System
Visibly smooths crow's-feet and de-puffs under-eye bags.
Cream, .5 oz. net wt.
Elixir, .09 oz. net wt.
854-433 reg. \$42
\$27.99



Anew Ultimate Supreme Eye Balm
Moisturizing formula infused with squalane, sunflower seed oil and antioxidant vitamin E. Wear alone or under makeup.
0.1 oz. net wt.
625-340 reg. \$45
\$28.99



Anew Ultimate Supreme Advanced Performance Crème
With Black Pearl Extract. See a dramatic difference in deep wrinkles and skin radiance.
1.7 oz. net wt.
014-735 reg. \$60
\$39.99



Anew Ultimate Supreme Dual Elixir
With Black Pearl Extract and precious oils. See a dramatic difference in even advanced signs of aging. Serum/Oil, .67 fl. oz. each.
963-925
reg. \$60
\$39.99



wake up to lifted-looking skin

90%

agreed skin looks
dramatically younger,
feels firmer and has
more visibly
youthful definition

NEW

**Anew Platinum
Sculpting Sleep Mask**

An overnight mask that helps visibly lift, plump and nourish skin while you sleep. Formulated with skin-contouring ingredients, including tetrapeptide, panthenol, niacinamide and yeast extract. Clinically tested to improve skin texture and wrinkles in two weeks.

1.7 fl. oz. 835-033 reg. \$42

\$27.99



Anew Platinum Night Cream
 Skin appears smoother overnight, resculpted over time. 1.7 oz. net wt. **753-439** reg. \$42
\$27.99



Anew Platinum Day Cream Broad Spectrum SPF 25
 With Paxillium Technology to help defy gravity and Radiacent Microspheres to help visibly restore radiance. 1.7 oz. net wt. **184-146** reg. \$42
\$27.99



Anew Platinum Age Delay Serum
 With niacinamide, panthenol and peptide. Formulated to visibly boost elasticity for a firmer look. Use AM and PM before moisturizer. 1 fl. oz. **625-609** reg. \$45
\$28.99



Anew Platinum Firm and Sculpt Cream for Neck and Chest
 With Peptide Lifting Complex to treat the skin on your neck and chest, which is more vulnerable to wrinkles and sagging. Use PM after cleansing. 1.7 oz. net wt. **763-584** reg. \$42
\$27.99



Anew Platinum Eye & Lip Cream
 Dual applicator. .5 oz. net wt. **902-614** reg. \$42
\$27.99



Anew Platinum Sculpting Body Serum
 With moisture-boosting niacinamide, panthenol (provitamin B5) and peptides. 6.7 fl. oz. **506-249** reg. \$45
\$28.99



Isa Knox LXNEW Ultimate Rejuvenating Eye Serum

Infused with paeonol and niacinamide to help visibly reduce fine lines around the eye area and depuff under-eye bags. 1 fl. oz. **567-177** reg. \$50

\$20 LOWEST PRICE EVER



Isa Knox LXNEW Ultimate Rejuvenating Serum

With paeonol and ceramides, visibly improves elasticity, radiance and skin texture. Reduces the appearance of wrinkles. 1.35 fl. oz. **756-624** reg. \$56

\$22.50 LOWEST PRICE EVER



Isa Knox LXNEW Ultimate Rejuvenating Multi-Corrector

Paeonol-infused serum with niacinamide and panthenol. Skin looks smoother and more youthful. 1.7 fl. oz. **496-595** reg. \$44

\$17.50 LOWEST PRICE EVER



Isa Knox LXNEW Ultimate Rejuvenating Dual Night Cream

With paeonol and macadamia oil. Volume Cream: Rice bran extract helps visibly plump skin. Firming Cream: Helps boost collagen and elastin. Each, .85 fl. oz. **564-015** reg. \$50

\$20 LOWEST PRICE EVER



Isa Knox LXNEW Ultimate Rejuvenating Balm Stick

With peony extract, plus a firming complex featuring castor, moringa and argan oils. Apply to forehead, eyes and neck, or anywhere you want extra care. .24 fl. oz. **267-593** reg. \$25

\$10 LOWEST PRICE EVER



**Isa Knox LXNEW Platinum
Sculpting Neck and Chest Cream**

With hibiscus extract, ceramide, shea butter, panthenol and squalane to help skin appear firmer, smoother and lifted. 1.7 fl. oz. **548-069** reg. \$50

\$20 LOWEST PRICE EVER

LOWEST
PRICES
EVER!



**Isa Knox LXNEW Platinum
Sculpting Oil Serum**

1.35 fl. oz. **318-720**
reg. \$56

\$22.50

LOWEST PRICE EVER

**Isa Knox LXNEW Platinum
Sculpting Day Cream**

Infused with moisturizing hibiscus extract and ceramide. Visibly tightens facial contours. 1.7 fl. oz. **318-845**
reg. \$50

\$20 LOWEST PRICE EVER

**Isa Knox LXNEW Platinum
Sculpting Eye Cream**

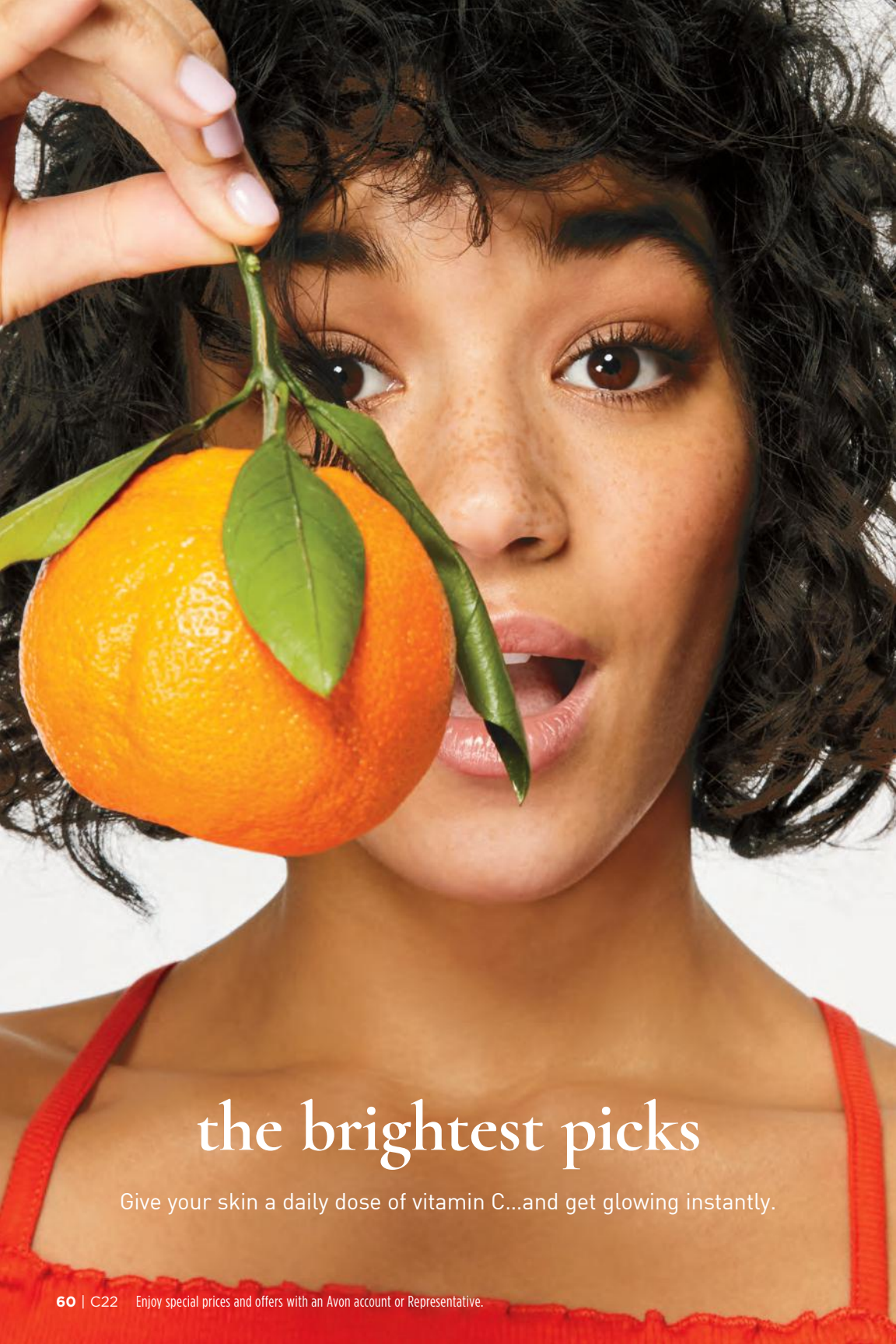
With hibiscus extract, panthenol and antioxidants. Leaves delicate eye area looking firmer, brighter and more defined. .84 fl. oz. **318-883**
reg. \$50

\$20 LOWEST PRICE EVER

**Isa Knox LXNEW Platinum
Sculpting Night Cream**

With firming hibiscus extract, ceramide, squalane and shea butter. Skin looks firmer, smoother and more defined. 1.7 fl. oz. **318-850** reg. \$50

\$20 LOWEST PRICE EVER



the brightest picks

Give your skin a daily dose of vitamin C...and get glowing instantly.



**AneW Vitamin C
Brightening Eye Cream**

Visibly reduces dark circles. Under-eye area looks brighter and more even-toned.
.5 fl. oz. **953-602** reg. \$34

\$22.99



AneW Vitamin C Exfoliating Peel Pads

With PHA and pineapple extract, vitamin C, panthenol and glycerin. Exfoliates and helps visibly brighten. Formulated without alcohol and fragrance. 4.3 fl. oz. 70 pads. **169-143** reg. \$28

\$20.99



**AneW Vitamin C
Antioxidant Lip Treatment**

Nourishes lips with vitamins C and E.
.13 oz. net wt. **784-547**
reg. \$14

\$7.99



**AneW Vitamin C
Brightening Serum**

Skin is visibly energized and brightened with the power of 10% pure vitamin C.
1 fl. oz. **522-066** reg. \$44

\$25.99



AneW Vitamin C Overnight Radiant Mask

Revitalizing formula with niacinamide, shea butter and sunflower seed oil. Apply after cleansing, treating and moisturizing. 1.7 fl. oz.
157-086 reg. \$36

\$19.99



**AneW Vitamin C Illuminating
Priming Moisturizer**

With skin-smoothing silicones. Use after Brightening Serum. Wear alone or under makeup. 1.7 fl. oz. **914-671** reg. \$34

\$22.99

EVERY BODY WANTS TO LOOK RADIANT

Vitamin C, plus other skin-nourishing ingredients, helps your skin look brighter and smoother all over.



Anew Vitamin C Nourishing Body Butter

With hydrating shea butter and niacinamide, plus vitamins C and E to help restore radiance. Fruity-floral and citrus scent. 7.8 fl. oz. **443-767** reg. \$32

\$19.99

Anew Vitamin C Glow Body Scrub

Sugar-based formula with pineapple and papaya enzymes and coffee seed extract exfoliates dry, dull skin. Citrus scent. 9 oz. net wt. **443-752** reg. \$36

\$19.99



Anew Vitamin C Illuminating Body Serum

Light-reflecting pigments leave skin looking luminous. 6.7 fl. oz. **157-071** reg. \$34

\$19.99



Anew Vitamin C Dry Body Oil

Soothing sunflower seed and jojoba oils help keep skin feeling supple. 3.4 fl. oz. **074-432** reg. \$34

\$19.99



**Isa Knox Anew Solaire
Everyday Face Protection Lotion
Broad Spectrum SPF 50**
1.7 fl. oz. **911-400** reg. \$32
\$24.99



**Isa Knox Anew Solaire Active Face & Body Protection
Lotion Broad Spectrum SPF 50**
2.7 fl. oz. **154-948** reg. \$35
\$27.99



**Isa Knox Anew Solaire Everyday Mineral Face
Protection Cream Broad Spectrum SPF 50**
Lightweight formula with zinc oxide.
Suitable for sensitive skin. Water-resistant (40
minutes). 1.7 fl. oz. **911-467** reg. \$32
\$24.99

92% of women believe
it dramatically improves
skin's overall appearance.*



Anew Power Serum
Visibly improves wrinkles,
radiance, firmness
and texture. Use AM and PM
after cleansing, before
moisturizing. 1 fl. oz.
838-047 reg. \$45
\$28.99

*Based on those who expressed an opinion
in a consumer-perception study.



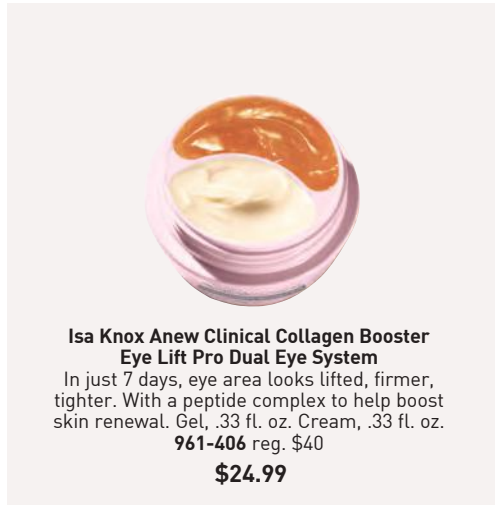
**Isa Knox Anew Clinical
Line Eraser with Retinol Targeted Treatment**
For targeted lines and wrinkles (expression lines) such as around forehead and mouth.
.67 fl. oz. **925-159** reg. \$40
\$27.99

**Isa Knox Anew Clinical
Line Eraser with Retinol Treatment**
Great for first-time retinol users.
Use AM/PM. 1 oz. net wt. **763-330** reg. \$45
\$29.99



100% showed clinical improvement of fine lines and wrinkles in one week, with increased results over time.

**Isa Knox Anew Clinical
Line Eraser with Retinol [1.0%]
Advanced Retinol Serum**
Our highest dose of retinol. Dramatically reduces the appearance of fine lines, wrinkles and dark spots.
Use PM. 1 fl. oz. **390-751** reg. \$50
\$40.99



**Isa Knox Anew Clinical Collagen Booster
Eye Lift Pro Dual Eye System**
In just 7 days, eye area looks lifted, firmer, tighter. With a peptide complex to help boost skin renewal. Gel, .33 fl. oz. Cream, .33 fl. oz.
961-406 reg. \$40
\$24.99



**Isa Knox Anew Clinical
Collagen Booster
Rejuvenating Serum Ampoules**
Powerful peptide blend boosts skin renewal. 60 capsulated single-use ampoules.
.008 fl. oz. each.
803-077 reg. \$66
\$54.99



**Isa Knox Anew Clinical
Collagen Booster
Microneedling Polisher**
At-home alternative to micro-dermabrasion and micro-needling. Visibly diminishes pores, fine lines and wrinkles.
1.7 fl. oz. **798-592** reg. \$34
\$20.99



**Isa Knox Anew Clinical
Collagen Booster Firming Cream**
With peptides that boost skin renewal to help restore youthful bounce. With moisturizing and skin-plumping niacinamide and squalane. Hygienic, airless pump. 1.7 fl. oz. **069-327** reg. \$45
\$29.99



**Isa Knox Anew Clinical
Revitalize & Reveal Intensive Peel**

Intensive resurfacing peel similar to pro acid peels. With AHA and PHA. 1 fl. oz. **780-025** reg. \$45

\$29.99



**Isa Knox Anew Clinical
Revitalize & Reveal
Resurfacing Expert Smoothing Fluid**

79% as effective as a pro micro-dermabrasion without the same irritation. 1 fl. oz.

852-282 reg. \$44

\$29.99



**Isa Knox Anew Clinical
Revitalize & Reveal
Resurfacing Lotion for Body**

Exfoliates with gentle yet effective AHA lactic acid. Moisturizes with shea butter. 5 fl. oz.

390-785 reg. \$34

\$20.99



**Isa Knox Anew Clinical
Revitalize & Reveal
Advanced Wrinkle Corrector**

In just two weeks, wrinkles appear reduced. 1.7 fl. oz.

914-576 reg. \$40

\$27.99



**Isa Knox Anew Clinical
Revitalize & Reveal
Extra Strength Retexturizing Peel**

Results similar to a 35% pro glycolic peel.* 30 fragrance-free pads. 2" diam. **632-774**

reg. \$40

\$27.99

*In 6 out of 8 attributes tested over a 7-week period.

Avon Solutions Banishing Serum
 An intensive serum with ingredients known to help improve the appearance of dark spots and uneven skin tone. 1 fl. oz. **507-905** reg. \$16

\$12.99



Avon Solutions Dramatic Firming Serum
 This moisturizing serum contains effective anti-aging ingredients that help promote a more youthful appearance. 1 fl. oz. **507-871** reg. \$16

\$12.99



Avon Solutions Nurtura Serum
 With skin-nourishing ingredients known to help combat dryness and flakiness, and help hydrate. 1 fl. oz. **507-924** reg. \$16

\$12.99



Solutions Dramatic Firming Cream
 Skin looks and feels smoother. 1.7 fl. oz. **374-657** reg. \$14

\$9.99



Solutions Nurtura Replenishing Cream
 Adds moisture to dry skin. 1.7 fl. oz. **908-263** reg. \$14

\$9.99



Solutions Banishing Cream
Skin Discoloration Improver
 Visibly improves skin tone. 1.7 fl. oz. **267-115** reg. \$14

\$9.99



Solutions Anti-Aging Cream
 Moisturizing formula works to visibly smooth the appearance of fine lines and wrinkles. 1.7 fl. oz. **949-460** reg. \$14

\$9.99



OILY TO NORMAL SKIN

Isa Knox LXNEW Clean Soothing Whipped Oil Cleanser

Helps eliminate impurities and excess oil. 5 fl. oz.

718-025 reg. \$19

\$14.99



NORMAL, DRY, COMBINATION, OILY SKIN

Isa Knox LXNEW Clean 2-in-1 Exfoliating Cleansing Balm

Melts away makeup and impurities. Spatula included. 3.5 oz. net wt.

718-006 reg. \$32

\$25.99



NORMAL TO DRY SKIN

Isa Knox LXNEW Clean Nourishing Cream Cleanser

Removes impurities and makeup while restoring moisture. 5 fl. oz.

717-990 reg. \$14

\$10.99



NORMAL, DRY AND COMBINATION SKIN

Isa Knox LXNEW Clean Balancing Gel Cleanser

Gel to foam. Helps remove oil and impurities while rebalancing skin. 5 fl. oz.

718-010 reg. \$14

\$10.99



Anew Hydra Fusion De-Puffing Eye Serum

With caffeine and hyaluronic acid.

Cooling ceramic tip. Instantly boosts hydration around eye area by 3X. .5 fl. oz.

137-737

reg. \$34

\$22.99



Anew Hydra Fusion Cleansing Micellar Water

No need to rinse off.

10.1 fl. oz.

139-380 reg. \$14

\$9.99



Anew Hydra Fusion

1.5% Hyaluronic Acid Serum

With three different molecular sizes of HA that reach multiple layers of skin's surface to visibly plump skin. 1 fl. oz.

290-390

reg. \$44

\$25.99



Anew Hydra Fusion

Nighttime Facial Treatment

Hyaluronic acid. Shea butter beads. Visibly re-plumps skin with 3X more moisture. Relaxing rose scent.

1.7 oz. net wt. 139-429 reg. \$34

\$22.99



Anew Hydra Fusion

Gel Cream

72 hours of long-lasting hydration. 1.7 oz. net wt.

266-893 reg. \$34

\$22.99

100% agree:

skin looks smoother and softer*

NEW

For dry, irritated skin

moisturizing bomb toner

A fast-absorbing, milky-textured toner clinically tested to increase skin's moisture levels in arid, dry conditions. 6.7 fl. oz. **929-207** reg. \$33

\$30



*Based on a consumer-perception study.

For dryness, loss of elasticity and firmness

The True Cream - Moisturizing Bomb

26 hours of long-lasting moisture.*

1.68 fl. oz. **948-463** reg. \$42

\$38

*Based on a clinical study.



For dryness, dullness and uneven texture

The True Cream - Aqua Bomb

70% increase in hydration levels.*

1.68 fl. oz. **556-207** reg. \$42

\$38

*Based on a clinical study.



For dryness, loss of elasticity and firmness

moisturizing eye bomb

Lightweight, refreshing eye cream cools on contact. Helps keep eye area looking firm, resilient and smooth.

.84 fl. oz. **445-478** reg. \$53

\$48



For an extra boost of hydration

aqua bomb hydrating toner

Water-based. With hyaluronic acid, honeysuckle flower extract and baobab tree seed extract. Use after cleansing, before serum and moisturizer.

6.7 fl. oz. **952-974** reg. \$33

\$30



For dryness, dullness and uneven texture

aqua bomb jelly cleanser

Jelly to foam. Amino acids and glycerin-based cleansing agents gently cleanse.

5.41 fl. oz. **445-353** reg. \$35

\$30



For dull, dry, fatigued skin

aqua bomb sleeping mask

Unique jelly-pudding texture! Replenishes with explosive hydration for smoother skin and a healthy glow.

2.53 oz. net wt. **514-717** reg. \$42

\$38





Dominas Intensive Dark Spot Corrector

Two-step system for visibly clear, luminous skin. Even-Tone Ampoule with vitamins C, E and enzymes helps visibly enhance radiance. Anti-Dark Spot Cream features vitamins C, B5 and ferulic acid. Each, .23 fl. oz. **713-061**

\$30 the set

Reveal your natural beauty

NEW

DOMINAS

A hydrating collection that focuses on correcting the look of dark spots and visibly improving fine lines and wrinkles.



Dominas Retinol Youth Rejuvenating Serum

96% say deeper wrinkles look reduced.* Also helps reduce the appearance of dark spots and fine lines. Powered by retinol 0.05%, vitamin C and niacinamide. 1 fl. oz. **713-004**

\$45

*Based on instrumental testing on 30 subjects at 2 weeks.



Dominas Multi Balm Special Double Set

Two all-in-one balm sticks contain an exclusive Quinone Complex with CoQ10 and niacinamide to help improve the look of wrinkles and dark spots. With moisturizing shea butter and ceramide.

Each, 0.24 oz. net wt. **713-042**

\$47 the set



Dominas Dark Spot UV Defense Sunscreen SPF 50

Broad spectrum UVA/UVB protection. Sheer, lightweight. With moisturizing niacinamide and panthenol, plus peony and nutmeg extracts to visibly enhance radiance. Formulated without PABA and ethanol. 1.7 fl. oz. **713-057**

\$25

LOWEST
PRICES
EVER!



**Farm Rx
Green Goddess
Facial Oil**

100mg broad spectrum CBD. Suitable for sensitive skin. Rich in omega acids and vitamin E. Use AM/PM after cleansing and serum. Fragrance-free. 1 fl. oz. **934-733** reg. \$51

**\$20.50
LOWEST
PRICE EVER**



**Farm Rx
Super Greens
Cooling Gel**

Lightweight moisturizer helps soothe and cool skin. Apply a thicker layer, after serum, as a mask to hydrate overnight as needed. 3.04 fl. oz.

354-227 reg. \$37

**\$15
LOWEST
PRICE EVER**



**Farm Rx
Super Greens
Multivitamin
Moisture Cream**

Locks in essential nourishing moisture. Use daily after cleansing, serums and treatments. 3.04 fl. oz.

314-141 reg. \$37

**\$15
LOWEST
PRICE EVER**



**Farm Rx
Super Greens
Refreshing
Eye Cream**

With nourishing Super Greens formula, plus cucumber extract. Hydrates and helps skin feel soothed. Green tea helps visibly de-puff. 1 fl. oz. **412-826** reg. \$32

**\$12.50
LOWEST
PRICE EVER**



**Farm Rx Super
Greens Refreshing Gel
Cleanser**

With soothing aloe. Convenient pump. Eco-friendly packaging and glass bottle. Use AM/PM. 8.11 fl. oz. **913-049** reg. \$32

**\$12.50 LOWEST
PRICE EVER**

**Refill (not shown)
16.9 fl. oz. 913-053
reg. \$35**

**\$14 LOWEST
PRICE EVER**

why bakuchiol?

It's a gentle plant-based alternative to retinol that helps visibly reduce wrinkles and discolorations without the same irritation.

Farm Rx Bakuchiol Cream
Moisturizing cream visibly reduces wrinkles. Vegan. Hypoallergenic. Suitable for sensitive skin.
3.04 fl. oz. **004-044** reg. \$45

\$18
LOWEST PRICE EVER

Farm Rx Bakuchiol Serum
Lightweight oil-textured formula targets fine lines, wrinkles and dullness without irritation.
1 fl. oz. **247-417** reg. \$45

\$18
LOWEST PRICE EVER

Farm Rx Bakuchiol Eye Cream
Visibly reduces dark circles, fine lines and wrinkles without irritating the delicate eye area.
1 fl. oz. **565-834** reg. \$37

\$15
LOWEST PRICE EVER



Farm Rx Pineapple Plus Brightening Jelly Serum

Helps improve dull, dry skin and reduce the appearance of fine lines, wrinkles and pores. Skin looks radiant. 1 fl. oz. **027-440** reg. \$41

\$16.50 LOWEST PRICE EVER



Farm Rx Pineapple Plus Radiance Boosting Mask

With natural alpha hydroxy acid, plus an antioxidant-rich fruit complex to help skin look smoother and more radiant. 3 fl. oz. **456-266** reg. \$35

\$14 LOWEST PRICE EVER



Farm Rx Pineapple Plus Instant Glow Toner

Revitalizing toner helps visibly minimize pores. Use AM and PM, after cleansing. 5 fl. oz. **027-382** reg. \$25

\$9 LOWEST PRICE EVER



**Rice Water Bright
Rice Bran
Gentle Exfoliating
Cleanser**

Daily scrub with organic rice bran powder, rice bran oil and hydrated silica. 10.1 fl. oz. **376-865** reg. \$19

\$14.99



**Rice Water Bright
Facial Cleansing
Lotion**

Helps brighten skin. Gently removes makeup and impurities.

6.7 fl. oz. **720-184** reg. \$14

\$10.99



**Rice Water Bright
Foaming Cleanser**

Light whipped foam. With rice water and soapwort extract. Skin looks clear and bright. 10.1 fl. oz.

508-093 reg. \$19

\$14.99



**Rice Water Bright
Mild Cleansing
Water**

Removes impurities via the micellar method, so no need to rinse off!

16.9 fl. oz. **288-360** reg. \$18

\$13.99



**Smaller Size!
Rice Water Bright
Foaming Cleanser**

Light whipped foam. With rice water and soapwort extract. Convenient size for your medicine cabinet. 5 fl. oz.

478-479 reg. \$13

\$9.99



**Rice Water Bright
Light Facial
Cleansing Oil**

With jojoba oil and rice water extract, known to visibly brighten and moisturize skin.

5 fl. oz. **720-199** reg. \$20

\$15.99



**Rice Water Bright
Cleansing
Facial Wipes**

Great on the go. With rice extract to moisturize while cleansing. Removes eye makeup.

50 sheets. **508-108** reg. \$13

\$9.99



**Rice Water Bright
Facial Massage
Cream**

With rice water, vitamins A, B and E, ceramide and minerals. After cleansing, massage into skin 2-3 times a week.

6.7 fl. oz. **450-200** reg. \$25

\$19.99



Calendula Essential Moisture

Daily skin care for irritated and sensitive skin. With moisturizing calendula extract, a soothing herb complex, and the ultimate hydrator, hyaluronic acid.

Serum

A moisturizing and soothing serum that helps calm skin and enhance hydration. 1.35 fl. oz. **980-533** reg. \$15

\$11.99



The Face Shop Smile Foot Exfoliating Cream

A unique 2-in-1 daily foot exfoliating cream that removes dead skin cells as it soothes skin. With naturally moisturizing urea, which leaves feet feeling soft and hydrated. 4 fl. oz. **363-471** reg. \$15

\$11.99

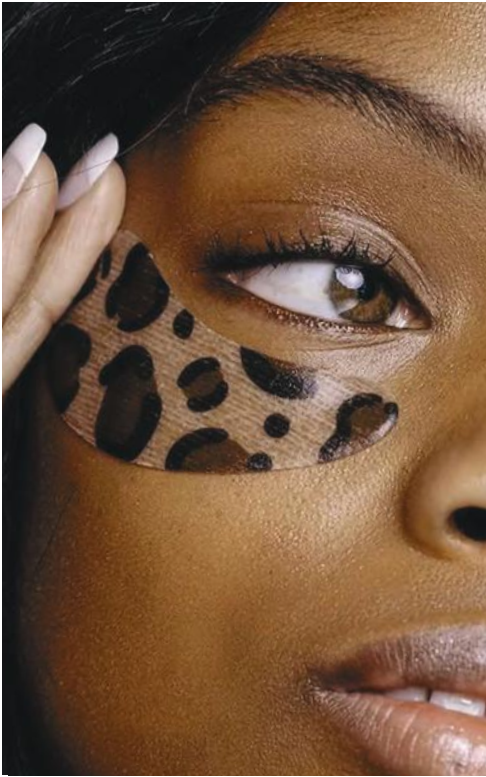


The Face Shop Smile Foot Mask

Disposable foot mask, with naturally moisturizing urea, shea butter and collagen, for baby-soft feet! Refreshes with peppermint oil. Contains two masks, one for each foot.

535-957 reg. \$5

\$3.99



THE FUN STARTS HERE

Welcome to the cosmic cutie-verse of

The Crème Shop

Discover the enchanting world of playful collections with the sweetest products at the sweetest prices to enhance the beauty you already have.

Cruelty-free

Paraben- and Sulfate-free

100% Inclusive



The Crème Shop How Do Eye Look? - Ready Under Eye Patches For Depuffing & Brightening

15 minutes is all it takes to hydrate, depuff and give your eyes a vibrant look to take on the day with our fierce patches. With hyaluronic acid, vitamin C and caffeine to help hydrate and perk up puffy, fatigued eyes. .14 fl. oz. [1 pair].

717-880 reg. \$5

\$4



**The Crème Shop
Go Bananas! Banana Powder**

Brightening and correcting setting powder helps eliminate dark circles and blurs imperfections. Smooths complexion without clogging pores. With grape seed, coconut and argan oils and camellia flower extract. Soft matte finish. Banana scented. Formulated without parabens. .53 oz. net wt.

717-875 reg. \$17

\$14



**The Crème Shop
Be Juicy Skin Corgi Animated Face Mask**

Helps smooth rough, dry, dull skin. Niacinamide-infused sheet mask helps reduce the appearance of bumps, blemishes and hyper-pigmentation. Formulated without parabens and sulfates.

Each, .88 oz. net wt.

723-475 reg. \$12

\$10 set of 3



**The Crème Shop
Vitamin C Gelee Mask Overnight Treatment**

Work on your glow while you catch some z's. A gelée mask fortified with vitamin C helps boost luminosity, correct discoloration and improve skin tone. Formulated without parabens and sulfates.

2.36 oz. net wt. 768-590

reg. \$18

\$15



**The Crème Shop
Juicy Makeup Removing Wipes - Narwhal**

Say good-bye to dirt, oil and waterproof makeup in a swipe! Rose water-infused wipes refresh, cleanse and hydrate your skin — with help from our adorable pal, Narwhal. Suitable for sensitive skin. Formulated without parabens, sulfates, phthalates and alcohol. 60 wipes. 423-557 reg. \$10

\$8



**The Crème Shop
Brillian-C Glow Multi-Balm**

Easy-to-use stick balm triples as a moisturizer, primer or lip balm for a natural, dewy glow. With vitamin C and niacinamide. Helps minimize and smooth the appearance of pores, brightens the appearance of dark spots and clarifies the look of skin with each use. Formulated without parabens and sulfates. .3 oz. net wt. 723-399 reg. \$24

\$20

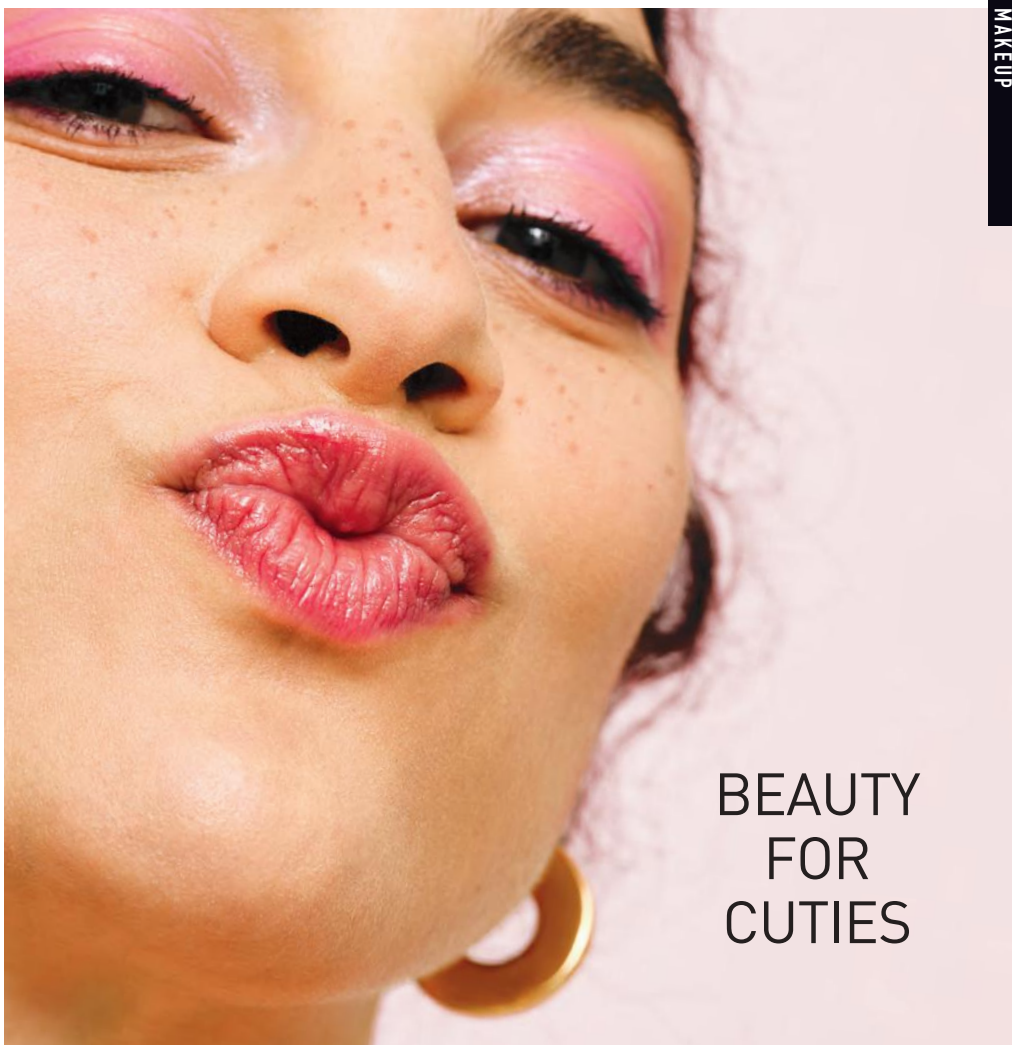


**The Crème Shop
Aqua Cure Intense Hydration Multi-Balm**

Easy-to-use stick balm triples as a moisturizer, primer or lip balm. With hyaluronic acid, jojoba oil and aloe extract. Delivers a cooling effect with deep hydration and helps improve the look of skin with each use. Formulated without parabens and sulfates. .3 oz. net wt. 723-403

reg. \$24

\$20



BEAUTY FOR CUTIES

The Crème Shop Lip Oil Elixir

Lightweight lip oil elixir creates an eye-catching candy-like glaze effect. Keeps lips looking supple and moisturized with the perfect hint of tint. Infused with jojoba oil to help promote naturally soft lips. Glossy finish. .19 oz. net wt. reg. \$15

\$12











- 
 Auburn Era
719-313
- 
 Pink About Me
719-328
- 
 Twinkle
719-749
- 
 Flirty Fuchsia
719-370

The Crème Shop Glossy 12 HR+ Lip Stain

An ultra-moisturizing lip stain infused with sunflower seed oil and glycerin. Has a lightweight, glossy finish that lasts for 12+ hours. Leaves lips feeling soft and moisturized. .19 oz. net wt. reg. \$15

\$12



- 
 Wine and Dine
697-712
 - 
 New Flame
698-389
 - 
 Cherub
697-822
 - 
 Honeymoon
697-731
-
- 
 Always Right
698-393
 - 
 Puppy Luv
697-951
 - 
 Heart Eyes
698-360
 - 
 Teddy
697-928

WE'VE GOT
CHARACTER



**The Crème Shop x Disney
3D Teddy Headyband™ in "Princess Pink"**

The perfect beauty accessory for a true Disney lover. Super-soft plush headband that holds your hair back and keeps it in place while you cleanse your face or apply cosmetics. One size.

Polyester, polyurethane, latex. 7½" L x 3" W.

Imported. **723-460**
reg. \$17

\$14



**The Crème Shop x Hello Kitty
Perfect Pink Travel Case**

The cutest pouch to pack all your essentials and beauty faves in! Sanrio's Hello Kitty character adds an adorable touch to this vibrant, travel-friendly case crafted with soft, vegan faux leather. Zipper closure. Easy to clean. Polyvinyl chloride, polyurethane, iron. 10" L x 3½" W x 7½" H. Imported. **717-928** reg. \$24

\$20



**The Crème Shop x Disney
Mickey Mouse and Minnie Mouse Travel Pouch**

Add a little Disney magic to your day with the perfect travel pouch featuring none other than Mickey Mouse and Minnie Mouse, crafted in vegan faux leather. An adorable way to store and carry your everyday essentials, makeup and more. Zipper closure. Easy to clean. Polyvinyl chloride, polyester, iron. 7" L x 4" W x 5" H. Imported. **721-893**
reg. \$27

\$22



**The Crème Shop x Hello Kitty
Macaron Lip Balm**

Adorable Hello Kitty lip balm in a unique macaron shape. Creamy balm infused with soothing vitamin E in crowd-favorite flavors. Leaves your lips soft, moisturized and nourished. Formulated without parabens and sulfates.

Each, .26 oz. net wt.
reg. \$11

\$9 each



**The Crème Shop x Keroppi
Macaron Lip Balm**

Sanrio's popular Keroppi character delivers the charm with this adorable lip balm in a unique macaron shape. Creamy balm infused with soothing vitamin E in green apple flavor. Leaves your lips soft, moisturized and nourished. Formulated without parabens and sulfates.

.26 oz. net wt. **717-913** reg. \$11

\$9



**The Crème Shop x Hello Kitty
Teddy Bear Macaron Lip Balm**

Adorable Hello Kitty lip balm in a unique macaron shape. Creamy balm infused with soothing vitamin E in white chocolate flavor. Leaves your lips soft, moisturized and nourished. Formulated without parabens and sulfates. .26 oz. net wt.

717-966
reg. \$11

\$9



**The Crème Shop x Hello Kitty
Moisture Remedy Macaron Lip Balm**

Adorable Hello Kitty lip balm in a unique macaron shape. Creamy balm infused with soothing vitamin E and shea butter in fresh strawberry rose latte flavor. Leaves your lips soft, moisturized and nourished. Formulated without parabens and sulfates. .26 oz. net wt.

717-932 reg. \$11

\$9

**The Crème Shop x Gudetama
Handy Dandy Cream**

Sanrio's excellent Gudetama character adds some cute tude to our hand cream. Made with shea butter and vitamin E to make your hands soft and perfect for holding! Fragrance notes of peach add a fruity touch. 1.69 oz. net wt.

721-908 reg. \$12

\$10





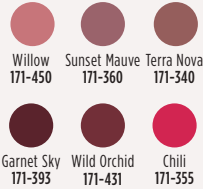
Featured shade:
fmg Glimmer Satin Lipstick in Celestial.



fmg Glimmer Matte Lipstick

Vivid color. Velvety feel. Featherlight non-drying formula with pomegranate extract. Buildable medium-to-full coverage. Formulated without parabens, talc, sulfates and phthalates.
.10 oz. net wt. reg. \$12

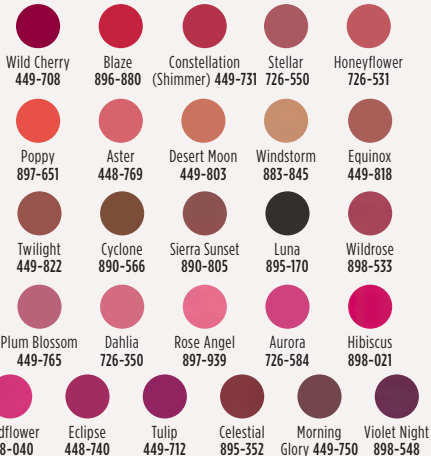
\$8.99



fmg Glimmer Satin Lipstick

Lightweight creamy formula with pomegranate extract. Buildable coverage. Satin finish. Formulated without parabens and sulfates.
.10 oz. net wt. reg. \$12

\$8.99



fmg Glimmer Lip Conditioner

Leaves dry, cracked lips feeling soft and smooth. With mango seed butter, vitamin E, and jojoba and sunflower seed oils. Formulated without parabens, sulfates, phthalates and talc.

.12 oz. net wt. **794-578**
reg. \$12

\$8.99



fmg Glimmer Birthday Balm Lip Crayon

Sheer, soft shine formula with non-GMO shea butter. Formulated without parabens and gluten. .1 oz. net wt. reg. \$15

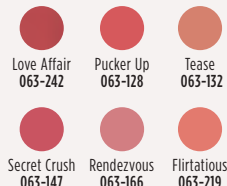
\$11.99



fmg LOVE Lip Butter

Sheer, high-shine formula with cupuaçu seed butter, mango extract, and apricot kernel and olive fruit oils. Buildable coverage. Formulated without parabens, sulfates and phthalates. .09 oz. net wt. reg. \$18

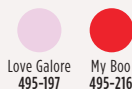
\$13.99



TPSY Drunk Shiny Lip Oil

Glossy formula with jojoba, argan and castor oils. Formulated without parabens, sulfates, phthalates and talc. .13 oz. net wt. reg. \$17

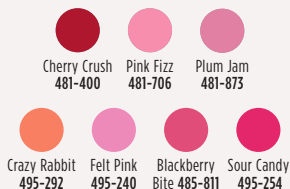
\$13



TPSY Forever Lip Marker

Vibrant long-wearing formula with castor and sunflower oils. Matte finish. Formulated without parabens, sulfates and phthalates. .08 fl. oz. reg. \$17

\$13





shadow play

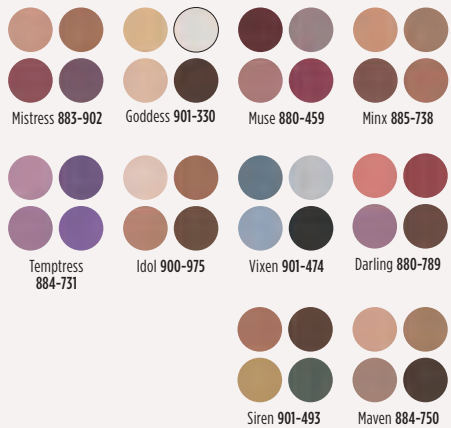
Featured shade: fmg Glimmer
Multi Eyeshadow Quad in Mistress.
This image was generated using artificial intelligence.



fmg Glimmer Multi Eyeshadow Quad

Soft powder formula lasts all day. No messy fallout. Buildable coverage. Mix of satin, matte and shimmer finishes. Formulated without parabens and fragrance. .21 oz. total net wt. reg. \$15

\$11.99

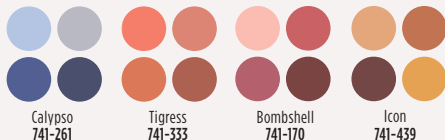




fmg Glimmer Matte Eyeshadow Quad

Soft powder formula lasts all day. No messy fallout. Buildable coverage. All Matte finishes. Formulated without parabens and fragrance. .21 oz. total net wt. reg. \$15

\$11.99



Calypso
741-261

Tigress
741-333

Bombshell
741-170

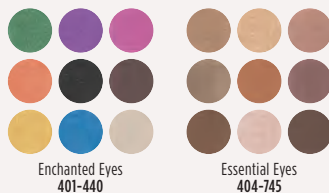
Icon
741-439



fmg Cashmere Eyeshadow Palette

Long-wearing formula with crease-resistant wear. Satin, matte and sparkling finishes. Formulated without parabens, talc and fragrance. .63 oz. total net wt. reg. \$40

\$33



Enchanted Eyes
401-440

Essential Eyes
404-745



fmg CathyCat Nine Lives Precision Liquid Eyeliner

Slim-tip brush delivers a precise line of water- and sweat-resistant color that will not skip, tug or smudge. Formulated without parabens, sulfates, phthalates and talc. .068 fl. oz.

Blackest Black 800-829

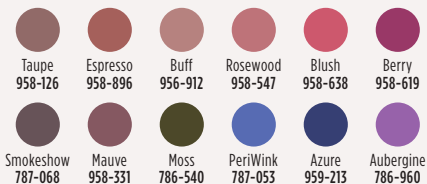
reg. \$18
\$14.99



fmg CathyCat Shadow Gaze Matte Color Stick

Long-wearing formula will not budge or smudge. Buildable and blendable coverage. Matte finish. Formulated without parabens and fragrance. .0476 oz. net wt. reg. \$19

\$14.99



Taupe
958-126

Espresso
958-896

Buff
956-912

Rosewood
958-547

Blush
958-638

Berry
958-619

Smokeshow
787-068

Mauve
958-331

Moss
786-540

PeriWink
787-053

Azure
959-213

Aubergine
786-960



fmg Glimmer Cream Eyeliner
Long-wearing formula with soft sheen finish. Retractable. Formulated without parabens, sulfates and talc. .01 oz. net wt. reg. \$9

\$3.99

-  Emerald Green 334-332
-  Starry Night 334-347
-  Saturn Grey 334-328
-  Majestic Plum 334-313
-  Cosmic Brown 334-351
-  Blackest Black 334-366



fmg Glimmer Lipliner
Long-wearing creamy formula with vitamin E. Prevents feathering. Matte finish. Retractable. Formulated without parabens, sulfates and talc. .01 oz. net wt. reg. \$9










\$3.99

-  Honey Peach 327-721
-  Lava Red 327-740
-  Passion Red 327-650
-  Red Brick 330-451
-  Mystery Mauve 330-538
-  Candy Apple 327-903
-  Pink Bouquet 330-356
-  Merlot 330-284
-  Au Naturel 330-318
-  Simply Spice 330-614
-  Chocolate 330-667
-  Perfect Plum 330-887



fmg Glimmer Diamond Eyeliner
Long-wearing formula with subtle sparkle. Retractable. Formulated without parabens, sulfates and talc. .01 oz. net wt. reg. \$9




\$3.99

-  Sterling 331-960
-  Teal Sparkle 331-606
-  Olive 331-940
-  Twilight Sparkle 331-553
-  Sugar Plum 331-625
-  Purple Rain 332-071
-  Smoky Diamond 331-280
-  Brown Sugar 331-568
-  Black Ice 331-610



fmg Glimmer Waterproof Eyeliner
Long-wearing, smudge- and waterproof formula. Retractable. Formulated without parabens, sulfates and talc. .01 oz. net wt. reg. \$9

\$3.99

-  Seafoam Green 334-241
-  Smoky Grey 332-162
-  Blackest Night 229-491
-  Midnight Blue 332-158
-  Blue Skies 334-237
-  Raisin 332-200
-  Brown Chocolate 332-124



fmg Glimmer Brow Definer
Long-wearing formula with castor and coconut oils. Smudge-, transfer-, sweat- and waterproof. Retractable. Formulated without parabens, sulfates and talc. .01 oz. net wt. reg. \$9

\$3.99

-  Light Blonde 331-109
-  Blonde 331-113
-  Tawny 331-128
-  Light Brown 331-151
-  Dark Brown 331-147
-  Brunette 331-242



fmg Glimmer Liquid Eyeliner
Quick-drying, long-lasting formula. Transfer-, sweat- and waterproof. Matte finish. Formulated without parabens, phthalates and fragrance. .037 fl. oz.

Blackest Black 354-380
reg. \$13

\$9.99



fmg Glimmer Always On Point Eyeliner
Built-in sharpener. Smudge- and waterproof. Formulated without parabens, sulfates and talc. .01 oz. net wt. reg. \$10

\$7.99

-  Black 016-389
-  Black Brown 016-446



high definition.
intense color.*

Create endless looks—
from sleek and sophisticated
to daring and dramatic!

Featured shades: fmg Glimmer Liquid Color
Eyeliner Pen in Forest, Smoked and Indigo.

NEW

**fmg Glimmer Liquid Color
Eyeliner Pen**

Felt-tip applicator glides on smoothly and provides precise application. Highly pigmented, lightweight formula is smudge-, transfer- and sweat-proof.* Formulated without parabens, talc, mineral oil, phthalates and fragrance. .04 fl. oz. reg. \$13

\$9.99 each

- 
 Forest
519-518
- 
 Smoked
519-537
- 
 Chestnut
519-503
- 
 Indigo
519-499



*Based on Consumer Home Use Test Study of 62 applicants.



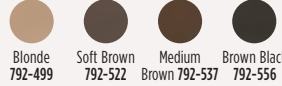
bold brows &
lush lashes



fmg Colors of LOVE Hi-Brow Tinted Brow Gel

24-hour water-resistant formula with heart-shaped fibers, clay and vitamin E. Won't clump, smudge or flake. Formulated without parabens, phthalates and fragrance. .11 fl. oz. reg. \$18

\$13.99



Blonde
792-499

Soft Brown
792-522

Medium
Brown 792-537

Brown Black
792-556



fmg Colors of LOVE Hi-Brow Sculpting Brow Gel

Clear formula with aloe and hyaluronic acid. Flake-proof. Formulated without parabens, phthalates and fragrance. .11 fl. oz. **536-695**

reg. \$18

\$13.99



fmg LOVE at 1st Lash Mascara

Lash-loving volumizing and lengthening fibers. With lycopene, olive oil and vitamin E. Won't clump, smudge or flake. Formulated without parabens and sulfates. .3 fl. oz. **Blackest Black 698-670**

reg. \$18

\$13.99



**fmg Cashmere
Eyelash Primer**

Nourishing formula keeps lashes looking healthy and strong with biotin and collagen. Maximizes the performance of any mascara for gorgeous, lush lashes. Formulated without parabens, sulfates and talc. .35 fl. oz.
324-369 reg. \$24

\$19



**fmg Cashmere
Ultimate Volume Mascara**

Long-wearing formula with biotin and collagen. Glossy black finish. Won't budge, smudge or transfer. Formulated without parabens, sulfates and talc. .27 fl. oz.
Rich Black 153-736
reg. \$23

\$18



**fmg Glimmer SuperShock
Volumizing Mascara**

Lash-building formula with plumping fibers. High-gloss finish. Won't clump, smudge or flake. Formulated without phthalates and fragrance. .338 fl. oz.

Black 698-829
reg. \$13

\$9.99



**fmg Glimmer SuperExtend
Nourishing Mascara**

Long-wearing lengthening formula with vitamin E, argan and coconut oils. Won't clump, smudge or flake. Formulated without sulfates and talc. .237 fl. oz.

Black 698-848
Brown Black 698-852
reg. \$13

\$9.99



**fmg LOVE at 1st Lash
Waterproof Mascara**

Lash-loving, waterproof formula with volumizing and lengthening fibers. With Lashrez, olive oil and vitamin E. Won't clump, smudge or flake. Formulated without parabens and sulfates. .29 fl. oz.

Blackest Black 480-953
reg. \$18

\$13.99



**fmg Glimmer Wash-Off
Waterproof Mascara**

Waterproof volume. Washes off easily with soap and water. Formulated without phthalates and fragrance. .21 oz. net wt. **Black 723-107**
reg. \$12

\$8.99

way to glow.

Silky, liquid pearl formula with a soft-filter effect and hint of tint in sheer, flexible shades.

NEW

fmg Match Airbrush Retouch Tinted Primer

Helps soothe and even skin tone and provides a lit-from-within dewy complexion. With skin-caring ferulic acid, panthenol (provitamin B5) and niacinamide. Formulated without parabens, phthalates, fragrance and talc.

1 fl. oz. reg. \$21

\$15.99 each



fmg Match Dust Finishing Powder
 Diffuses light, visibly blurs pores and controls shine. Blend of ultrafine rose quartz, ruby and tourmaline. With green tea extract. Matte finish. Formulated without talc, oil and parabens. .21 oz. net wt. reg. \$17



Translucent
Fair-Light
594-720



Translucent
Medium-Deep
594-768

\$13.99



fmg Match Filter Serum Tint Foundation
 Instantly hydrates, blurs flaws and evens tone. With hyaluronic acid, vitamin E and berry complex. Buildable coverage. Demi-matte finish. Formulated without talc, parabens and fragrance. .31 oz. net wt. reg. \$21

\$15.99



Fair 932-491 Fair Light 932-620 Light 932-640 Light Medium 932-654



Soft Medium 932-783 Medium 932-836 Medium Deep 933-153 Tan Deep 933-168 Deep 933-172

fmg Match Set Finishing Powder
 Controls shine, visibly blurs pores and fine lines, and sets makeup. Mineral-infused formula. Matte finish. Formulated without talc, parabens and fragrance.

.22 oz. net wt. **932-472** reg. \$19

\$14.99



fmg Match Prime Face Perfector
 Flaw-blurring mattifying oil-free formula visibly minimizes pores and fine lines. Sheer coverage. Matte finish. Formulated without parabens. 1 fl. oz. **103-744** reg. \$17

\$12.99



fmg Match Tint Radiant Tinted Moisturizer
 Brightens skin tone, boosts moisture and blurs flaws. With passion fruit, chia and sunflower seed oils, and vitamin E and provitamin B5. Buildable coverage. Radiant finish. Formulated without parabens. 1 fl. oz. reg. \$14

\$10.99



Fair 368-234 Fair Light 368-249 Light 368-253 Light Medium 368-344



Soft Medium 368-382 Medium 368-397 Medium Deep 368-416 Tan Deep 368-420 Deep 368-454

fmg Match Wand Correcting Stick
 Neutralizes unevenness, brightens and color corrects. Long-wearing formula with shea butter and vitamin E. Formulated without parabens, phthalates and sulfates. .21 oz. net wt. reg. \$18

\$13.99



Sherbet:
neutralizes dark
circles and marks
726-790



Pistachio:
neutralizes
redness
726-770



Gelato:
brightens
dullness
726-785





Featured shades:
fmg Cashmere Cream Concealer in Medium Neutral
and Cashmere 24 Hour Foundation in Cappuccino.



fmg Cashmere Cream Concealer

Long-wearing formula helps to camouflage dark circles, acne and uneven skin tone. With hyaluronic acid and collagen. Full-coverage. Matte finish. Formulated without parabens, phthalates, talc and fragrance. .21 oz. net wt.

reg. \$17

\$13

- | | | | | |
|-------------------------|-----------------------|---------------------------|----------------------------|------------------------|
| | | | | |
| Fair Neutral
359-028 | Light Cool
359-396 | Medium Neutral
359-434 | Medium Tan Warm
359-640 | Tan Neutral
359-931 |

fmg Cashmere 24 Hour Foundation*
24 hours of comfortable, breathable wear. Full, flexible coverage. Soft-focus matte finish. Visibly blurs pores and fine lines for a smoother complexion. With antioxidant botanical extracts. Water-resistant. Doe-foot applicator. Formulated without parabens, phthalates and sulfates. 1 fl. oz. reg. \$32

\$24.50

- | | | | | | |
|-------------------------|----------------------------|--------------------------|---------------------------|----------------------------|----------------------------|
| | | | | | |
| Cannoli (W)
017-347 | Nougat (W)
126-107 | Meringue (W)
017-500 | Shortcake (C)
018-970 | Buttercream (N)
019-134 | Marshmallow (N)
131-849 |
| | | | | | |
| Custard (N)
019-172 | Strudel (C)
019-225 | Macadamia (W)
019-450 | Cappuccino (N)
136-893 | Tiramisu (W)
490-620 | |
| | | | | | |
| Soufflé (N)
139-730 | Gingerbread (C)
142-311 | Amaretto (N)
146-188 | Latte (W)
147-480 | Brownie (W)
147-461 | |
| | | | | | |
| Hazelnut (W)
147-495 | Cognac (W)
147-681 | Pecan (N)
149-699 | Java (W)
149-722 | Truffle (C)
150-263 | |

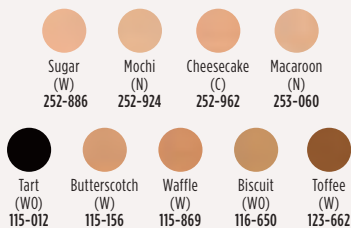




fmg Cashmere 24 Hour Concealer*

24 hours of comfortable, breathable wear. Full coverage. Soft-focus matte finish. Visibly corrects dark circles and imperfections. With antioxidant botanical extracts. Water-resistant. Doe-foot applicator. Formulated without parabens, phthalates and sulfates. .20 fl. oz. reg. \$22

\$16



fmg Cashmere Under Eye Primer

Helps diminish the look of dark circles and fine lines. With caffeine, green tea extract and vegan collagen. Formulated without parabens, phthalates and fragrance.

.317 oz. net wt. **010-429** reg. \$24

\$19



fmg Cashmere Multi-Peptide Face Primer

Preps skin. Revitalizing ingredients help to smooth the appearance of fine lines and pores and visibly plump and strengthen the skin barrier. Sheer gel formula with Matrixyl 3000 peptide blend, hyaluronic acid, collagen and niacinamide. Formulated without parabens, talc and fragrance.

1 fl. oz. **739-284** reg. \$23

\$19

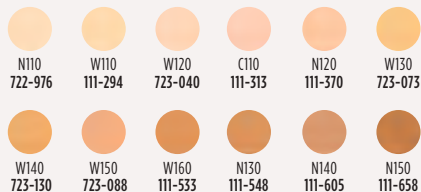


fmg Cashmere Compact Powder Foundation*

Shine-control formula can be used wet or dry. Buildable medium-to-full coverage. Matte finish. With antioxidant botanicals. Sponge applicator.

Formulated without parabens, phthalates and sulfates. .40 oz. net wt. reg. \$36

\$30



fmg Cashmere Multi-Peptide Eyeshadow Primer

Keeps eyeshadow in place and intensifies the color. Skin-loving ingredients help to reduce the appearance of fine lines and visibly plump and strengthen the skin barrier. Sheer formula with Matrixyl 3000 peptide blend, hyaluronic acid, collagen and panthenol. Formulated without parabens and talc. .31 oz. net wt.

906-385 reg. \$22

\$18

*Available in Cool (C), Neutral (N), Warm (W) and Warm Olive (WO) undertones.



fmg Glimmer Be Blushed Cheek Color
Creamy formula with vitamin E. Buildable coverage. Dewy finish. Formulated without parabens, phthalates and fragrance. .14 oz. net wt. reg. \$15

\$11.99



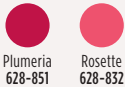
fmg Glimmer Powder Blush
Weightless formula with ultrafine pearl and vitamin E. Buildable coverage. Matte finish. Formulated without parabens, phthalates and fragrance. .28 oz. net wt. reg. \$14

\$10.99



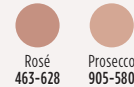
fmg Glimmer Lip & Cheek Stain
Highly pigmented, long-wearing gel formula. Brush-tip applicator. Transfer-proof. Formulated without parabens and fragrance. .19 fl. oz. reg. \$17

\$12.99



fmg Glimmer Powder Illuminator
Lightweight buildable formula with vitamin E. Radiant finish. Formulated without parabens, phthalates and fragrance. .35 oz. net wt. reg. \$14

\$10.99



TPSY I Want to Highlight You Liquid Highlighter
Instant boost of moisture. With ultrafine pearls for a naturally radiant finish. Fragrance-free. 1.01 fl. oz. **615-965** reg. \$21

\$16



fmg Colors of LOVE Glow Balm Duo Illuminating Stick
Sheer formula with blend of pomegranate extract, mango and shea butter, vitamins E and C, and avocado oil. Soft, pearlescent finish. Formulated without parabens, phthalates and fragrance. .28 oz. total net wt. **924-573** reg. \$22

\$16.99



**fmg GLOKOLOR
Hybrid Face Mist**

Instant boost of moisture to refresh skin. With aloe vera, agave and algae extracts. Formulated without parabens and sulfates. 2.7 fl. oz. **787-599** reg. \$25

\$20



**fmg GLOKOLOR
Hybrid Face Primer**

Softens the appearance of imperfections. With aloe vera, agave and algae extracts. Formulated without parabens and sulfates. 1 fl. oz. **787-637** reg. \$25

\$20



**fmg GLOKOLOR
Lip Serum Pencil**

Refreshes and smooths lips. With peppermint and argan oils. Formulated without parabens and fragrance. .06 oz. net wt. **787-508** reg. \$20

\$16

it's party nail season!

Let's raise a glass of bubbly and get fête-ready with the holidays' must-have mani.



NEW

LIMITED EDITION fmg Glimmer Raise A Glass Nail Lacquer

High-performance formula glides on smoothly and evenly for lasting color that does not chip. Helps keep nails strong and nourished. Formulated without phthalates, sulfates, parabens, toluene, formaldehyde and camphor. reg. \$12

\$8.99



Bubbly
032-540



Flushed
032-560



LIMITED EDITION

fmg Glimmer

Glitz A-Peel Nail Lacquer

Glittery quick-dry formula stays on until you're ready to take it off. Just peel off for fuss-free removal. No harsh acetone or remover needed. Glossy finish. Formulated without parabens, toluene, formaldehyde and camphor. .4 fl. oz. reg. \$13



\$9.99

- 
Best in Class
538-459
- 
Newlywed
538-425
- 
Leading Lady
538-430

**fmg Glimmer
Nail Lacquer**

Nail-strengthening, long-wearing, no-chip formula. Gel-like cushion texture. Formulated without parabens and phthalates.



.4 fl. oz.
reg. \$12
\$8.99

LIMITED EDITION

fmg Glimmer











Matte-lic Crystals Nail Lacquer

Innovative nail lacquer combines vibrant color with a matte crystal finish. Formulated without parabens, toluene, formaldehyde and camphor. .4 fl. oz. reg. \$12



\$7.99

- 
Rose Citrine
256-164
- 
Stolen Sapphire
256-092
- 
Smoky Quartz
256-107

- 
SATIN
Lost Galaxy Plum 598-911
- 
SATIN Black
Hole Burgundy 018-286
- 
SATIN
Supernova Red 018-267
- 
SATIN
Night Sky Berry 602-658
- 
SATIN High
Magnitude Mauve 018-840
- 
SATIN
Lunar Tan 602-753
- 
SATIN
Cool Comet 602-830
- 
SATIN
Full Moon Flush 018-730
- 
METALLIC
Meteorite Rose 019-369
- 
METALLIC
Golden Galaxy 019-354

NEW

fmg Glimmer

Nourished Nail Cuticle Oil

Nourishing treatment for dry, damaged cuticles. Fortified with safflower oil to help restore and condition nails and cuticles. Formulated without phthalates, sulfates, parabens, toluene, formaldehyde and camphor. .4 fl. oz. **612-894** reg. \$13



\$9.99

NEW

fmg Glimmer

Nail Air Dry Drops

Need a fast finish? Accelerate your dry time with just a drop or two! Helps prevent smudges and nicks. Formulated without phthalates, sulfates, parabens, toluene, formaldehyde and camphor. .4 fl. oz. **612-913** reg. \$13



\$9.99

**fmg Glimmer
Nail Base & Top Coat**

Two-in-one base and top coat primes and shields nails. Glossy finish. Formulated without parabens and phthalates.

.4 fl. oz. **018-161**
reg. \$12



\$8.99

**fmg Glimmer
Nail Lacquer Eraser Pen**

For a clean and perfected mani. Won't dry out nails or cuticles. Formulated without parabens and phthalates. .135 fl. oz.

704-443
reg. \$12



\$8.99



fmg Unready Makeup Remover Cloth

Dual-sided. Reusable and travel-friendly. 100% polyester. 9 7/8" sq. Machine wash and dry. Imported.

230-176 reg. \$14

\$10.99



fmg Waterproof Lip & Eye Makeup Remover

Dual-layer oil and water remover leaves skin fresh and clean. With ether, silicone, hydrocarbon and ester oils. Formulated without mineral oil, tar, talc and parabens.

3.7 fl. oz. 352-243 reg. \$12

\$7.99



fmg Moisturizing Eye Makeup Remover Lotion

Cleans, refreshes and moisturizes as it whisks away eye makeup. Formulated without parabens, sulfates and phthalates.

2.5 fl. oz. 543-272 reg. \$8

\$5.99



Daily Beauty Tools Tweezers

Amp up your beauty routine with angled tweezers. Stainless steel. 3 1/2" L.

747-020 reg. \$4

\$2.99



fmg Makeup Remover Wipes

With vitamin E and aloe, chamomile, cucumber, marshmallow root and oat extracts. Resealable pack of 24 wipes. Formulated without parabens, gluten, sulfates, phthalates and fragrance.

333-867 reg. \$10

\$7.99



fmg Vanity Organizer

Four compartments with two removable inside dividers, three outer pockets and lattice elastic straps. Folds for easy storage. 9 1/2" L x 6" W x 5" H. Polyester. Imported.

022-816 reg. \$30

\$23.99



fmg Oil Rewind Roller Ball

Reusable 360° rotating volcanic-stone roller instantly absorbs oil and grease without disturbing makeup. 3" L x 1" W. Plastic handle, protective cap. Imported.

508-294 reg. \$18

\$13.99



fmg Set & Fix Spray

Controls oil and helps keep makeup smudge-proof. Non-greasy, non-sticky. Formulated without parabens, sulfates, phthalates and silicones.

1.7 fl. oz. 416-707 reg. \$15

\$9.99



fmg Express Makeup Brush Wash

Easily removes dirt, oil and makeup. With aloe vera and green tea extract. Formulated without alcohol and sulfates.

1 fl. oz. 141-368 reg. \$14

\$10.99



fmg Flawless Complexion Sponge

Dual-ended: Allover makeup application rounded end, and contouring and concealing flat end.

2½" L x 1½" W. 100% PU, latex-free. 140-160 reg. \$10

\$7.99



fmg Kabuki Brush

Soft, angled brush for pressed or loose powder formulas. Retractable with protective cap.

3¾" L x 1" diam.

Synthetic bristles. 732-370

reg. \$19

\$14.99



fmg Blush & Contour Brush

Dual-ended: Angled contour brush and tapered, oval blush brush. 7¼" L.

Synthetic bristles. 933-259

reg. \$22

\$16.99

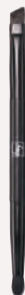


fmg Complexion Blending Brush

Dual-ended: Rounded buffing foundation brush and concealer brush. 6½" L. Synthetic bristles.

933-210 reg. \$23

\$17.99



fmg Precision Eye Brush

Dual-ended: Pointed pencil brush and angled eyeliner brush. 5¼" L.

Synthetic bristles. 933-187

reg. \$15

\$11.99



fmg Eyeshadow Blending Brush

Dual-ended: Crease brush and all-over eyeshadow brush. 6" L.

Synthetic bristles. 933-320

reg. \$15

\$11.99

a touch of vanilla.
a caress of roses.



NEW

amber floral

LYRD Vanilla Rose Eau de Parfum

Warm familiar notes evoke sweet memories, wrapping you in a creamy, intoxicating embrace. 1.7 fl. oz. 094-020 reg. \$42

\$35

Top: Peach, Coconut, Rhubarb

Mid: Dewy Roses, Comforting Vanilla, Aquatic Marine Accord

Dry: Cashmere Musk, Amber, Cedarwood

wildly indulgent. simply sublime.

NEW

amber floral

LYRD Sultry Orchid
Eau de Parfum

1.7 fl. oz. 892-960

reg. \$42

\$35



Top: **Pink Saffron**,
Wild Raspberry, Elemi
Mid: Jasmine Sambac,
Red Orchid,
Black Leather
Dry: **Warm Amber**,
Papyrus Smoke,
Cotton Candy



NEW

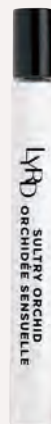
LYRD
Sultry Orchid
Travel Spray

.3 fl. oz.

612-799

reg. \$18

\$14.99



BACK BY POPULAR DEMAND!

**NEW LOOK!
SAME GREAT SCENT!**

fresh green floral

LYRD Coastal Lotus Eau de Parfum

Sparkling mandarin, island gardenia and lotus flower. 1.7 fl. oz. **869-906** reg. \$42

\$35



woody floral

**LYRD Oud Rose
Eau de Parfum**

Saffron, rose and patchouli. 1.7 fl. oz. **954-412** reg. \$42

\$32



soft floral

**LYRD Honeysuckle Blossom
Eau de Parfum**

Apple blossom, honeysuckle nectar and vanilla orchid. 1.7 fl. oz. **616-282** reg. \$30

\$24



LYRD Peony Rosé Hair and Body Mist*

Lightweight formula envelops you in a soft cocoon of scent with notes of peony petals, pink currant and sheer musk. Leaves hair with a subtle, healthy-looking shine. 3.25 fl. oz.

167-212 reg. \$18

\$14.99



LYRD Honeysuckle Blossom Hair and Body Mist*

Lightweight formula envelops you in a soft cocoon of scent with notes of apple blossom, honeysuckle nectar and vanilla orchid. Leaves hair with a subtle, healthy-looking shine. 3.25 fl. oz.

167-231 reg. \$18

\$14.99

IT'S YOUR LIFE, SHINE RADIANTLY.

Get that sunny feeling with this uplifting scent of optimism and endless energy, bursting with brilliance.

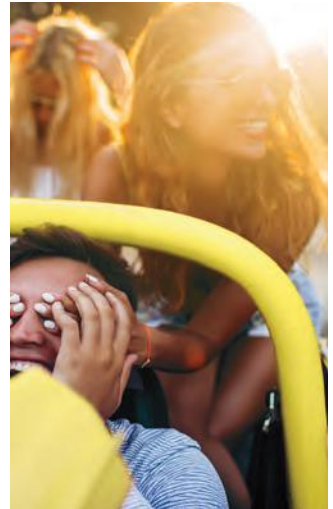
NEW

fruity floral

Live Out Loud Solar Vibes
Eau de Parfum
1.7 fl. oz. 835-822 reg. \$40
\$30



Top: Vibrant Bergamot, Cardamom
Mid: Coconut Water, Frangipani,
Ylang-Ylang, Orange Flower
Dry: Fluffy Marshmallow, Vanilla,
Cedarwood





fruity floral

Live Out Loud #4U
Eau de Parfum
 Mandarin, peach
 blossom and vanilla.
 1.7 fl. oz. **735-968**
 reg. \$40

\$30



fruity floral

Live Out Loud
Eau de Parfum
 Strawberry, mimosa and
 vanilla. 1.7 fl. oz. **142-000**
 reg. \$40

\$30



soft floral

Today Eau de Parfum
 Hibiscus, silk musk and
 butterfly blossoms. 1.7 fl. oz.
325-920
 reg. \$40

\$30

a kiss of the Italian coast

BACK BY POPULAR DEMAND!

fruity floral

Far Away Amalfi Eau de Parfum

1.7 fl. oz. **032-502**

reg. \$25

\$19.99

Top: Italian Bergamot, Crisp Pear,
Coconut Flakes

Mid: Orange Flower, Coastal

Tuberose, Jasmine Sambac

Dry: Vanilla, Sensual Musk,
Creamy Cashmere Woods





LIMITED EDITION
fruity floral

Far Away Escape Eau de Parfum

Anjou pear, gardenia flower and cashmere wood. 1.7 fl. oz.

473-993 reg. \$25

\$19.99



amber floral

Far Away Eau de Parfum

Freesia, jasmine and amber.

1.7 fl. oz. 685-712

reg. \$25

\$19.99



fruity floral

Far Away Infinity Eau de Parfum

Bergamot, jasmine sambac and sandalwood. 1.7 fl. oz. 318-481

reg. \$25

\$19.99



fruity floral

Far Away Bali Eau de Parfum

Grapefruit, salted tuberose and amber. 1.7 fl. oz. 451-389 reg. \$25

\$19.99



amber floral

Far Away Gold Eau de Parfum

Ylang-ylang, jasmine and vanilla.

1.7 fl. oz. 685-727

reg. \$25

\$19.99



fruity floral

Rare Amethyst Eau de Parfum

Plum, violet and sandalwood.
1.7 fl. oz. **933-062** reg. \$25

\$19.99



amber floral

Rare Gold Eau de Parfum

Mandarin zest, ylang-ylang and amber.
1.7 fl. oz. **933-115** reg. \$25

\$19.99



soft floral

Rare Pearls Eau de Parfum

Magnolia, white pepper and rosewood.
1.7 fl. oz. **761-615** reg. \$25

\$19.99



amber floral

Imari Seduction Eau de Toilette

Wild berries, purple orchid and patchouli.
1.7 fl. oz. **452-897** reg. \$25

\$19.99



woody floral

Imari Amor Eau de Parfum

Black currant, orris and warm musk.
1.7 fl. oz. **762-573** reg. \$25

\$19.99



amber floral

Imari Eau de Toilette

Bergamot, jasmine and amber.
1.7 fl. oz. **871-496** reg. \$25

\$19.99

serene.
divine.
elegant.

fresh green floral

Haiku
Eau de Parfum

Japanese yuzu, delicate
muguet and blonde woods.

1.7 fl. oz. **521-170**
reg. \$25

\$19.99



woody floral

Haiku Sunrise Eau de Parfum

Coconut water, rhubarb and
cedarwood. 1.7 fl. oz. **091-500**
reg. \$25

\$19.99



fresh green floral

Haiku Kyoto Flower
Eau de Parfum

Violet leaf, white peony and cotton
musk. 1.7 fl. oz. **144-352** reg. \$25

\$19.99



fresh green floral

Haiku Reflection Eau de Parfum

Water accord, acacia blossom and
amber wood. 1.7 fl. oz. **617-657**
reg. \$25

\$19.99

layering essentials



**Rare Pearls
Hair and
Body Mist**
3.25 fl. oz.
572-851
reg. \$18
\$14.99



**Rare Pearls
Hand
Cream**
2.5 fl. oz.
364-827
reg. \$7
\$5.99



**Rare Pearls
Body Lotion**
6.7 fl. oz.
082-915
reg. \$13
\$9.99



**Far Away
Hand Cream**
2.5 fl. oz.
364-850
reg. \$7
\$5.99



**Far Away Hair
and Body Mist**
3.25 fl. oz.
572-536
reg. \$18
\$14.99



**Far Away Body
Scrub & Wash**
6.7 fl. oz.
143-360
reg. \$15
\$10.99



**Far Away
Body Lotion**
6.7 fl. oz.
082-881
reg. \$13
\$9.99



Haiku Hair and Body Mist
3.25 fl. oz. **572-574**
reg. \$18
\$14.99



Haiku Hand Cream
2.5 fl. oz. **364-808**
reg. \$7
\$5.99



Haiku Body Lotion
6.7 fl. oz. **447-820**
reg. \$13
\$9.99



Haiku Body Scrub & Wash
6.7 fl. oz.
143-208
reg. \$15
\$10.99



amber floral
Candid Cologne
Bergamot, tuberose
and patchouli.
1.7 fl. oz.
038-295
reg. \$18
\$14.99



soft floral
Dreamlife Cologne
Mimosa flower,
rose and amber.
1.7 fl. oz.
236-227
reg. \$18
\$14.99



woody floral
Night Magic Cologne
Neroli, jasmine
and musk.
1.7 fl. oz.
168-682
reg. \$18
\$14.99



soft floral
Odyssey Cologne
Tuberose,
ylang-ylang and
oakmoss. 1.7 fl. oz.
900-391
reg. \$18
\$14.99



soft floral
**Sweet Honesty
Cologne**
Lily of the valley, rose
and cedarwood.
1.7 fl. oz.
901-861
reg. \$18
\$14.99



soft floral
Timeless Cologne
Cardamom,
jasmine and
patchouli.
1.7 fl. oz.
037-930
reg. \$18
\$14.99



soft floral
Topaze Cologne
Jasmine, rose and
sheer musk.
1.7 fl. oz.
735-217
reg. \$18
\$14.99



fresh green floral
Free O, Eau de Toilette
White peach tea,
honeysuckle and musk.
1.7 fl. oz.
490-840
reg. \$18
\$14.99

unique
scents.
soft
skin.



NEW

LIMITED EDITION

Perfumed Skin Softener

Leaves skin soft, silky and scented. Each, 5 fl. oz. reg. \$7

\$4.99 each

fresh green floral

Haiku Harmony

Find harmonious happiness with balanced notes of grapefruit, violet and musk.

735-547

woody floral

Imari Sequins

Bedazzle with shimmering notes of freesia, guaiac wood and vanilla.

745-855

woody floral

Candid Embrace

Feel a warm caress with welcoming notes of pink pepper, lilac and sandalwood.

751-948

fresh green floral

Sweet Honesty Innocence

Capture the purity of sweet innocence with flirty notes of orange blossom, green apple and musk.

759-729

fruity floral

Night Magic Luna Blooms

Entice the night with blooming notes of pear, lychee and muguet.

745-946

amber floral

Far Away Journeys

Find your sense of adventure with fascinating notes of ginger, orchid and cedarwood.

735-532

fresh green floral

Timeless Enchantments

Exude classic charm and delight with enduring notes of bergamot, peony and sandalwood.

751-751

amber floral

Odyssey Untamed

Explore the unexpected with adventurous notes of lemon, freesia and amber.

755-924



fresh aromatic

Black Suede Eau de Toilette
Bergamot, leather and oakmoss.
3.4 fl. oz. 908-703 reg. \$24
\$17.99



Black Suede Bar Soap
3.17 oz. net wt.
495-565 reg. \$6
\$3.99



**Black Suede
Hair & Body Wash**
5 fl. oz. 230-200 reg. \$8
\$5.99

the call of the wild



fresh aromatic

Wild Country Cologne

Lavender, coriander seed
and sandalwood.

3 fl. oz. 086-466 reg. \$24

\$17.99

Packaging may vary.



**Wild Country
Aftershave Splash**
4 fl. oz. 366-432
reg. \$16
\$12.99



**Wild Country
Hair & Body Wash**
5 fl. oz. 215-188
reg. \$8
\$5.99



**Wild Country
Bar Soap**
3.17 oz. net wt. 495-570
reg. \$6
\$3.99



fresh aromatic

Perceive Cologne

Citrus, sage and cedarwood.
3.4 fl. oz. 194-550 reg. \$30

\$22.99



woody fougère

Studio 1886 Gentleman Eau de Toilette

Geranium, black pepper and cedarwood. 1.7 fl. oz. 708-750 reg. \$50

\$39



Studio 1886 Gentleman

Aftershave Lotion

6.7 fl. oz. 708-927 reg. \$24

\$17.99



woody fougère

Mesmerize Black Eau de Toilette

Pepper, nutmeg and tonka bean. 3.4 fl. oz.

305-667 reg. \$30

\$22.99



fresh aromatic

Mesmerize Cologne

Bergamot, cardamom and amber.

3.4 fl. oz. 871-458 reg. \$30

\$22.99

lead with confidence



**BACK BY
POPULAR DEMAND!**

fresh aromatic

Alpha Eau de Toilette
3.4 fl. oz. 088-598 reg. \$35

\$26.99

Top: Italian Bergamot, Sparkling Verbena, Juniper Berries
Mid: Spiced Cardamom, Basil, Nutmeg
Dry: Brandy, Cedarwood, Olibanum



NEW

ORGANIST Rice Water

See **lustrous hair** and **luminous skin** with rice water, formulated with rice extract and rice bran oil.



NEW

ORGANIST Rice Water

WHY RICE WATER?

- A time-honored Asian beauty secret
- Rich in amino acids, vitamins B and E and minerals
- Helps reduce breakage and split ends to smooth hair, and improve shine and manageability

FOR BODY

With antioxidants
ideal for helping to
moisturize dry skin

CLEANSE

Nourishing Body Wash

With soap derived from olive oil. Contains panthenol and hyaluronic acid. Helps skin appear soft and moisturized. 16.9 fl. oz. 382-097 reg. \$19

\$14.99

NOURISH

Nourishing Body Milk

With plant-derived moisturizer and plant-derived oil (squalane) to help hydrate and nourish dry skin. Easily absorbed. Nongreasy. 10 fl. oz. 382-336 reg. \$19

\$14.99



help nourish & moisturize dry, damaged hair with the power of rice water

CLEANSE

Damage Care Shampoo

With biotin, ceramide, protein and 17 amino acids to deeply nourish each strand, restoring strength and resilience. Enriching rice water helps transform dry hair into a silky mane. 16.9 fl. oz.

381-803 reg. \$19

\$14.99

TREAT

Damage Care Treatment

Perfect for hair in need of hydration and repair. Biotin, protein and 17 amino acids help nourish each strand from within. Hyaluronic acid and collagen help smooth hair for resilience and softness. 6.7 fl. oz.

381-860 reg. \$19

\$14.99

REPLENISH

Moisture Replenish Hair Mist

Two-layer mist: a hydrating essence plus five plant oils, including jojoba and argan oil, for deep moisturization. Rice water, biotin, ceramide, protein and amino acids help revitalize, nourish and soften dry, damaged hair. Shake well before use.

Use on damp or dry hair.

Fresh floral scent. 2.7 fl. oz.

381-985 reg. \$24

\$18.99



Nourishing
Oil Layer

Hydrating
Essence Layer

hair & scalp look stronger with the natural goodness of rosemary

1

CLEANSE

Organist Rosemary Mint Strengthening Shampoo + Conditioner

With rosemary and biotin, to help to keep your scalp and hair looking healthy. Refreshing, cooling peppermint helps your scalp feel revitalized.

Each, 16.9 fl. oz.

Shampoo
542-974

Conditioner
542-993
reg. \$19

\$14.99 each



2

THICKEN

Organist Rosemary Mint Scalp Strengthening Tonic

With rosemary, mint, biotin and caffeine. Scalp feels nourished and revitalized with a cooling sensation. Hair looks fuller, thicker, stronger.

5 fl. oz.

544-427 reg. \$24

\$18.99



3

NOURISH

Organist Rosemary Mint Hair Strengthening Oil

Hair feels fortified, nourished and refreshed. 2 fl. oz. 542-845
reg. \$24

\$18.99



OVER
80%
AGREED
HAIR FELT
STRONGER*



strengthen
your **BODY's**
moisture barrier

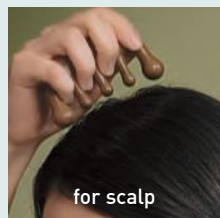


**Organist
Rosemary Mint
Body Wash**

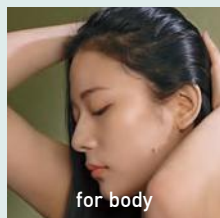
Invigorate your senses. Formulated with AHA/BHA/PHA and panthenol.
16.9 fl. oz.
544-446 reg. \$19
\$14.99



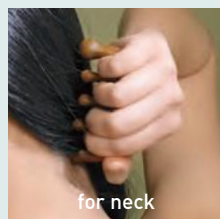
FOR HAIR & BODY



for scalp



for body



for neck

ORGANIST Botanical Castile Soap

Daily vegan washes for face and body infused with soap made from olive oil and formulated without parabens, silicone oil or sulfates. Leaves skin feeling refreshed, revitalized and luxuriously moisturized while it cleanses.

FOR OILY SKIN

Tea Tree & AHA BHA

Controls oil as it deeply cleanses and refreshes. Fresh herbal scent. 16.2 fl. oz. **348-115** reg. \$13

\$10.99

FOR DRY SKIN

Rose Water & Hyaluronic Acid

Low-pH formula helps replenish soothing moisture. Crisp floral scent. 16.2 fl. oz.

348-100 reg. \$13

\$10.99



Organist Apple Cider Vinegar Body Wash

For normal to oily skin. It blends apple cider vinegar extract with panthenol so skin feels refreshed and nourished.

16.9 fl. oz. **482-740**
reg. \$19

\$14.99

Organist Apple Cider Vinegar Exfoliating Body Scrub

With panthenol and AHA/BHA/PHA, it gently exfoliates dead skin cells to help skin look and feel refreshed all over.

6.7 fl. oz. **482-846**
reg. \$19

\$14.99



ORGANIST Apple Cider Vinegar

Cleanse, clarify & hydrate with exfoliating apple cider vinegar extract, detoxifying ginger, organic lemon water, cooling menthol and enriching biotin. Formulated without silicone oil or sulfates.

1

Clarifying Shampoo

For oily hair. Helps clarify and nourish scalp and hair for a healthy-looking shine while it cleanses. 16.9 fl. oz. **482-650** reg. \$19

Clarifying Conditioner

Great for oily, dull hair. Helps clarify and nourish scalp and hair for a healthy-looking shine. 16.9 fl. oz. **482-664** reg. \$19

\$14.99 each

3

Scalp Tonic

Leave-on scalp tonic made with a blend of 10 natural herbs. Helps dissolve oily buildup and revitalizes the scalp. 5 fl. oz. **482-721** reg. \$24 **\$18.99**

2

Clarifying Water Treatment

Rinse-out treatment infused with collagen and hyaluronic acid. Formulated to clarify hair and help it look naturally soft and flowing instantly with a healthy shine. 6 fl. oz. **482-717** reg. \$19

\$14.99





Original Bonus-Size Bath Oil
25 fl. oz.
037-690
reg. \$30
\$24.99



Original Bath Oil
Hydrates during or after bath or shower.
16.9 fl. oz.
439-040
reg. \$24
\$17.99



Original Bath Oil Spray
Locks in hydration.
5 fl. oz.
824-580
reg. \$19
\$12.99



Original Shower Gel
Gently cleanses and hydrates.
5 fl. oz.
914-580
reg. \$8
\$4.99



Original Gelled Body Oil
Dries to a silky finish.
6.76 fl. oz.
939-500
reg. \$14
\$10.99

Original Replenishing Hand Cream
24+ hours of moisturization.
3.4 fl. oz.
519-690
reg. \$7
\$5.99



Original Beauty Bar Soap
Skin-nourishing. Creamy lather. Suitable for daily use on face, body and hands.
3.17 oz. net wt.
543-110
reg. \$4.50
\$3.49



Original Body Lotion
48-hour moisture.
11.8 fl. oz.
761-634
reg. \$15
\$11.99



Original Bonus-Size Body Lotion
48-hour moisture.
33.8 fl. oz.
825-351
reg. \$26
\$17.99



Original Bonus-Size Shower Gel
Gently cleanses and hydrates.
33.8 fl. oz.
433-444
reg. \$18
\$14.49

Soft & Sensual Gelled Body Oil
Dries to a silky finish.
6.76 fl. oz. **908-244**
reg. \$14

\$10.99

Soft & Sensual Bath Oil
Hydrates during or after bath or shower. 16.9 fl. oz. **504-614**
reg. \$24

\$17.99

Soft & Sensual Body Lotion
48-hour moisture.
11.8 fl. oz. **400-720**
reg. \$15

\$11.99

Soft & Sensual Replenishing Hand Cream
24+ hours of moisturization.
3.4 fl. oz. **905-355**
reg. \$7

\$5.99

Soft & Sensual Shower Gel
Gently cleanses and hydrates. 5 fl. oz. **914-710**
reg. \$8

\$4.99



Soft & Sensual Bonus-Size Bath Oil
Hydrates during or after bath or shower. 25 fl. oz. **862-920**
reg. \$30
\$24.99



Soft & Sensual Beauty Bar Soap
Skin-nourishing. Creamy lather. Suitable for daily use on face, body and hands. 3.17 oz. net wt. **543-215**
reg. \$4.50
\$3.49



Soft & Sensual Bonus-Size Body Lotion
48-hour moisture. 33.8 fl. oz. **825-643**
reg. \$26
\$17.99



Soft & Sensual Bonus-Size Shower Gel
Gently cleanses and hydrates. 33.8 fl. oz. **018-142**
reg. \$18
\$14.49



Radiant Moisture Shower Gel
Gently cleanses and hydrates.
5 fl. oz. **410-914**
reg. \$8

\$4.99

Radiant Moisture Bonus-Size Shower Gel
Gently cleanses and hydrates.
33.8 fl. oz. **433-922**
reg. \$18

\$14.49



Radiant Moisture Bonus-Size Bath Oil
Hydrates during or after bath or shower.
25 fl. oz.
249-788
reg. \$30

\$24.99



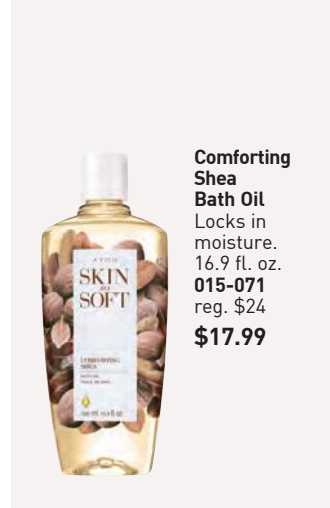
Radiant Moisture Replenishing Hand Cream
24+ hours of moisturization.
3.4 fl. oz.
892-650
reg. \$7

\$5.99



Radiant Moisture Bonus-Size Body Lotion
48 hours of moisture.
33.8 fl. oz.
826-343
reg. \$26

\$17.99



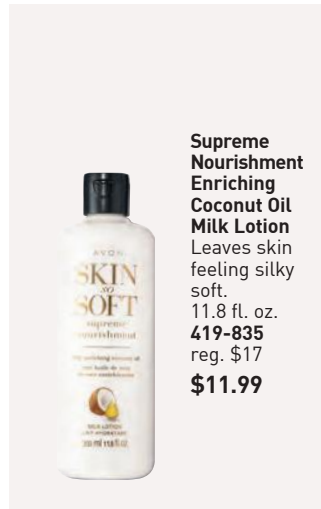
Comforting Shea Bath Oil
Locks in moisture.
16.9 fl. oz.
015-071
reg. \$24

\$17.99



Supreme Nourishment Enriching Coconut Oil Wash
With nourishing vitamin E.
11.8 fl. oz.
366-380
reg. \$15

\$12.99



Supreme Nourishment Enriching Coconut Oil Milk Lotion
Leaves skin feeling silky soft.
11.8 fl. oz.
419-835
reg. \$17

\$11.99



Supreme Nourishment Bonus-Size Body Lotion
48 hours of moisture.
33.8 fl. oz.
826-817
reg. \$26

\$17.99



**Skin So Soft
Botanical Essence
Bath Oil**
16.2 fl. oz.
027-253
reg. \$31
\$24.99

Skin So Soft Pure Nature

Revitalizing Shower Gel

96% naturally derived.
Richly lathering gel.
12 fl. oz. **415-170**
reg. \$20

\$15.99

**Revitalizing In-Shower
Body Lotion**

95% naturally derived.
Hydrating and softening lotion.
Apply onto wet skin after
shower or bath. 8 fl. oz.
633-857 reg. \$21

\$16.49

Revitalizing Body Cream

94% naturally derived. Smooth
on moisturizing cream after
bath or shower. 12 fl. oz.
629-767 reg. \$21

\$16.49



Shower Gel and Body Cream bottles: 95% post-consumer recycled material, excluding cap.
Body Lotion tube: 55% post-consumer recycled material, excluding cap.



Skin So Soft
for Acne-Prone Skin
developed for all
skin types with gently
exfoliating salicylic acid

for face

**Acne-Prone Skin
Soothing Spot Gel**

.5 fl. oz. **072-721**
reg. \$18

\$13.99

**Acne-Prone Skin
Foaming Cleanser**

5 fl. oz. **041-647**
reg. \$17

\$12.99

for body

**Acne-Prone Skin
Soothing Gel**

6.1 fl. oz. **040-636** reg. \$20

\$15.99

**Acne-Prone Skin
Exfoliating Body Wash**

10.1 fl. oz. **041-556** reg. \$20

\$15.99

**Acne-Prone Skin
Body Pads**

70 pads. **039-330** reg. \$30

\$24.99

**Acne-Prone Skin
Gentle Body Wash**

10.1 fl. oz. **039-325** reg. \$20

\$15.99



**Skin So Soft Facial Bar
Salicylic* & Lactic** Acids**
Gently exfoliates to help skin
look softer and luxuriously
smooth. 3.1 oz. net wt.

364-569 reg. \$6

\$4.99



**Skin So Soft Facial Bar
Hyaluronic Acid† &
Niacinamide‡**
Enriches skin with moisture.

3.1 oz. net wt.

364-573 reg. \$6

\$4.99



**Skin So Soft Facial Bar
Retinol†† & Vitamin C‡**
Helps visibly even tone, brighten
and enhance skin clarity.

3.1 oz. net wt.

364-607 reg. \$6

\$4.99



**Skin So Soft Facial Bar
Collagen††† & Goat Milk††††**
Deeply hydrates.

3.1 oz. net wt.

364-626

reg. \$6

\$4.99

serious therapy for dry skin

**Moisture Therapy
Bonus-Size Body Lotions**

Each, 33.8 fl. oz. reg. \$24

\$16.99 each

Intensive Healing & Repair

72-hour moisture for extra-dry skin. Fragrance-free.

828-111

Daily Skin Defense

Helps restore moisture to everyday dry skin.

827-890

Calming Relief

Soothes and relieves dry, itchy skin. Fragrance-free.

828-164



**Moisture Therapy
Intensive Healing & Repair
Extra Strength Cream**

24-hour moisturization. Fragrance-free. 5.3 oz. net wt.

224-982 reg. \$8

\$5.99

**Moisture Therapy
Balance + Soothe
Body Wash**

Softens as it gently cleanses. 13.2 fl. oz.

438-078 reg. \$23

\$18

**Moisture Therapy
Balance + Soothe
Body Lotion**

Skin looks softer and healthier. 13.2 fl. oz.

438-082 reg. \$25

\$20



**Physiogel Daily Moisture Therapy
Hydrating Facial Cream**
72 hours of long-lasting hydration.
With ceramide NP, squalane and lecithin.
5.07 fl. oz. **712-400**
\$23.99



**Physiogel Daily Moisture Therapy
Hydrating Lotion**
72 hours of long-lasting hydration.
With ceramide NP, squalane and lecithin.
13.5 fl. oz. **712-835**
\$19.99



**Physiogel Calming Relief
Redness Relieving Facial Cream**
For dry, irritated skin. Clinically proven to help
reduce redness in 7 days. With palmitamide MEA,
squalane and lecithin. 1.69 fl. oz. **702-144**
\$15.99



**Physiogel Calming Relief
Redness Relieving Facial Cream**
For dry, irritated skin. Clinically proven to help
reduce redness in 7 days. With palmitamide MEA,
squalane and lecithin. 3.4 fl. oz. **706-044**
\$23.99



**Physiogel Calming Relief
Redness Relieving Lotion**
For dry, irritated skin. Clinically proven to help
reduce redness in 7 days. With palmitamide MEA,
squalane and lecithin. 8 fl. oz. **712-376**
\$23.99



**Physiogel Calming Relief
Redness Relieving Lotion**
For dry, irritated skin. Clinically proven to help
reduce redness in 7 days. With palmitamide MEA,
squalane and lecithin. 13.5 fl. oz. **712-380**
\$29.99

PHYSIOGEL

A clinically tested solution for dry, sensitive skin. **With BioMimic Technology™** containing a complex of essential lipids that help strengthen and replenish the skin barrier, which locks in moisture, so skin feels soft, smooth and less sensitive from dryness.

- Hypoallergenic and dermatologist-tested.
- Formulated without fragrances or colorants.
- Sold at dermatology clinics worldwide.

PHYSIOGEL HYPOALLERGENIC DAILY MOISTURE THERAPY HYDRATING FACIAL CREAM

Provides up to 72-hour hydration
and locks in moisture

FOR DRY AND SENSITIVE SKIN



CERAMIDE NP
SQUALANE
LECITHIN

75 ml / 2.53 fl. oz.

Physiogel Daily Moisture Therapy Hydrating Facial Cream

72 hours of long-lasting hydration.
With ceramide NP, squalane and lecithin.
2.53 fl. oz. **712-395**

\$17.99



Awarded the National
Eczema Association
Seal of Acceptance™

**Senses Cozy
Vanilla & Coconut
Body Mist**

With refreshing
aloe vera extract.
8 fl. oz. **034-888**
reg. \$18

\$14.99

**Senses Cozy
Vanilla & Coconut
Body Lotion**

With shea butter
and vitamin E.
8 fl. oz. **200-208**
reg. \$18

\$14.99

**Senses Cozy
Vanilla & Coconut
Shower Gel**

Moisturizing cleanser.
10 fl. oz. **035-190**
reg. \$18

\$14.99

**Senses Cozy Vanilla
& Coconut Body Scrub**

With shea butter.
9 oz. net wt.

530-314
reg. \$23

\$18.99



**Senses
Cozy Vanilla
& Coconut
Hand Soap**

With
moisturizing
glycerin.
10.1 fl. oz.

178-675
reg. \$14

\$10.99



**Senses
Sparkling Grapefruit
& Orange Blossom
Body Mist**

With refreshing
aloe vera extract.
8 fl. oz. **034-687**
reg. \$18

\$14.99



**Senses
Sparkling Grapefruit
& Orange Blossom
Body Lotion**

With shea butter
and vitamin E.
8 fl. oz. **367-219**
reg. \$18

\$14.99



**Senses
Sparkling Grapefruit
& Orange Blossom
Shower Gel**

Moisturizing cleanser
derived from coconut.
10 fl. oz. **367-204**
reg. \$18

\$14.99



**Senses
Sparkling Grapefruit
& Orange Blossom
Hand Soap**

With moisturizing
glycerin. 10.1 fl. oz.
415-127
reg. \$14

\$10.99



**Senses Gratitude
Lavender &
Cedarwood
Shower Steamers**
Each, 1 oz. net wt.
504-428
reg. \$26
\$20.99
set of 6



Fill your space with calming scents

Senses Gratitude Lavender & Cedarwood Air Diffuser
Six diffuser reeds.
Fragrance oil, 2.37 fl. oz.
504-724
reg. \$30
\$24.99

❖ **Senses Gratitude Lavender & Cedarwood Candle**
3½" H x 3" diam.
7 oz. net wt.
905-374
reg. \$25
\$19.99

Senses Gratitude Lavender & Cedarwood Room Spray
3.25 fl. oz.
361-851
reg. \$14
\$10.99

Place candle on trivet or holder before lighting to protect furniture.
Never leave burning candles unattended.
Keep away from children and pets.

**Senses Shower Gel
Blushing Cherry
Blossom**
5 fl. oz. 921-847
reg. \$7
\$4.99



**Senses Shower Gel
Fresh Cucumber
& Melon**
5 fl. oz. 400-716
reg. \$7
\$4.99



**Senses Shower Gel
Juicy Pomegranate
& Mango**
5 fl. oz. 248-155
reg. \$7
\$4.99



**Senses Shower Gel
Silky Vanilla**
5 fl. oz. 248-140
reg. \$7
\$4.99



**Avon
Shower Brush**
904-727
reg. \$10
\$7.99

Exfoliation Mitt
Microfiber jacquard,
with nylon/spandex cuff.
439-734
reg. \$13
\$9.99





Cherry Blossom
929-211



Sensitive Skin
875-400



Vanilla Cream
875-669



Orange & Honeysuckle
633-952



Endless Ocean
809-075



Lily & Honeysuckle
Blossom
805-524



Cucumber Melon
688-950



Lavender Garden
381-799



Soft Pink
415-218

soak away stress

Senses Bubble Bath
Each, 24 fl. oz. reg. \$15
\$11.99 each



**Veilment Glacial Water
Cooling Body Scrub & Cleanser**
13.5 fl. oz. 573-480 reg. \$17
\$13.99



**Veilment Dead Sea Salt
Body Scrub & Cleanser**
13.5 fl. oz. 781-992 reg. \$17
\$13.99



**Veilment Himalaya Pink Salt
Body Scrub & Cleanser**
13.5 fl. oz. 991-211 reg. \$17
\$13.99



**Veilment Black Rose
Body Scrub & Cleanser**
13.5 fl. oz. 707-969 reg. \$17
\$13.99



**Veilment Himalaya
Pink Salt Exfoliating Soap**
5.3 oz. net wt. 260-440
reg. \$8
\$6



Veilment CBD Dry Body Oil
3.73 fl. oz.
869-485
reg. \$37
\$30



**Veilment CBD Nourishing
Body Cream (Tube)**
6.7 fl. oz. 254-229
reg. \$40
\$24.49 LOWEST PRICE EVER



Light/Medium
422-307

gotta glow

Get a sun-kissed tan
anywhere...even at home.

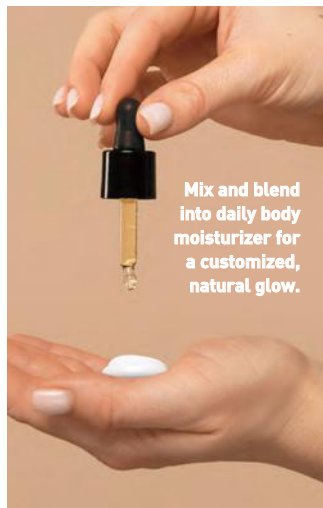


Medium/Dark
422-526

Veilment Lumière Sunless Tanning Serum

The more drops, the deeper the tan. Color-correcting technology visibly evens tone and reduces redness. Suitable for different skin tones. With skin-nourishing hemp seed oil and vanilla extract. Dermatologist-tested, hypoallergenic and vegan. Each, 1.01 fl. oz. reg. \$25

\$19.99 each



Mix and blend
into daily body
moisturizer for
a customized,
natural glow.



NEW

AN ORAL CARE
INNOVATION:
**HIMALAYA
PINK SALT**

For a healthy-looking, whiter,
brighter smile. Enriched with
Himalayan Pink Salt.



**Himalaya Pink Salt
Purple Whitening
Toothbrush**

Purple color fades
as bristles wear,
reminding you to
replace. Clinically
tested to remove 4X
more interdental
plaque.* Bristles
with 2X the
elasticity clean
narrow gaps
between teeth and
the gum line.

383-165 reg. \$6

\$5.29

*Compared to LG H&H regular
toothbrush with soft bristles.



**Himalaya Pink Salt
Purple Color
Corrector + Intensive
Whitening Toothpaste
(with Fluoride)**

Purple toothpaste
with advanced
color-correcting
power. Clinically
tested to reduce
yellow stains on
teeth by 2X after
one use; 9X more
than regular
toothpaste. Visibly
whiter teeth in
one week. 24-hour
stain resistance.
Vanilla mint flavor.

Formulated
without parabens,
gluten, phthalates
and triclosan.
3.5 oz. net wt.
383-624 reg. \$12

\$9.50



Himalaya Pink Salt Intensive Whitening Toothpaste (with Fluoride) 3-Piece Pack
 Clinically tested to whiten teeth in one week; 9X more than regular toothpaste without SHMP. 24-hour stain resistance. With sodium fluoride, an anticavity ingredient that helps strengthen enamel. Pink paste. Spearmint flavor. Each, 4.2 oz. net wt. **729-689** reg. \$36
\$26.99 the 3-piece pack



Himalaya Pink Salt Whitening Toothbrush (Medium)
 Bristles are infused with Himalayan pink salt for effective cleansing and a gentle brightening effect. Medium-sized brush. High-tension bristles penetrate narrow gaps. **729-359** reg. \$6
\$4.99



Himalaya Pink Salt Intensive Whitening Toothbrush (Large)
 Bristles are infused with Himalayan pink salt for effective cleansing and a gentle brightening effect. Large-sized brush. High-tension bristles penetrate narrow gaps. **035-812** reg. \$6
\$5.29



Himalaya Pink Salt Whitening Travel Set (Toothpaste + Toothbrush)
 Includes:
 • Himalaya Pink Salt Toothpaste, spearmint flavor. 1 oz. net wt.
 • Toothbrush. Medium size. **728-902** reg. \$11
\$8.99
the 2-piece pack

Himalaya Pink Salt Whitening Natural Salt Toothpaste (Fluoride-Free) 2-Piece Pack
 Includes two toothpastes. Helps reduce plaque, gently whiten teeth and naturally freshen breath. Contains essential minerals and bifidus essences. Pink gel. Spearmint flavor. Formulated without parabens, gluten and triclosan. Each, 3.9 oz. net wt. **347-836** reg. \$18
\$14.99
the 2-piece pack





**Avon Aromatherapy
Body Lotion Bright Day Ahead**
Charge your day with positive energy. With citrus and ginger fragrance oils to uplift your mood. 5.8 fl. oz. **584-670** reg. \$17
\$13.99



**Avon Aromatherapy
Body Lotion Sleep Tight Zzz**
Unwind with rose and lavender fragrance oils to help promote a restful sleep. 5.8 fl. oz. **584-866** reg. \$17
\$13.99



**Avon Aromatherapy
Body Lotion Bye-Bye Stress**
De-stress with refreshing spearmint and eucalyptus fragrance oils for stress relief and mental clarity. 5.8 fl. oz. **584-684** reg. \$17
\$13.99



**Avon Care Silicone Glove
Protective Hand Cream**
Lasting protection against dryness. 3.4 fl. oz. **366-887** reg. \$7
\$5.99



**Moisture Therapy Intensive
Healing & Repair Hand Cream**
For extremely dry skin. Moisturizes through hand washings. Fragrance-free. 4.2 fl. oz. **482-937** reg. \$7
\$5.99



**Moisture Therapy
Intensive Healing & Repair
Moisturizing Lip Treatment Balm**
.14 oz. net wt. **285-117** reg. \$2
\$1.59



**Veilment Care
Lip Balm**
Strawberry **602-720**
Cherry **604-168**
Each, .14 oz. net wt.
reg. \$2
\$1.59 each



Perfumed Liquid Deodorant
Soft floral scent. Aluminum-free. Fast-drying. Easy fingertip application. 2 fl. oz.
889-915
reg. \$8
\$5.99



**Avon Microbiome by Reach®
Hygiene Deodorant Stick**
Floral citrus scent.
Aluminum-free. 24-hour odor protection. 2.65 oz. net wt.
524-528 reg. \$16
\$12.99

NEW

**Roll-On
Anti-Perspirant
Deodorant**
Each, 1.7 fl. oz.
reg. \$4
\$2.99 each



Rare Jade
881-508



Sweet Honesty Essence
828-312



Imari Essence
874-313



Imari Chic
884-564



Night Magic Essence
828-327



Far Away Essence
828-403



Far Away Voyage
875-009



Skin So Soft
Soft & Sensual Essence
875-047



Cool Confidence
Essence
867-023



Cool Confidence
Powder Essence
828-255



Feelin' Fresh Essence
874-461



On Duty Essence
875-763



Black Suede Essence
867-133



Mesmerize Essence
363-251



Wild Country Essence
786-277



On Duty Sport
Essence
786-186



Rare Pearls
906-897



Night Magic Evening
Musk
862-590



Odyssey
740-250



Sweet Honesty
439-021



Timeless
885-302



Candio
656-095



Far Away
891-376



Haiku
809-060



Imari
464-366



Rare Gold
613-154



Skin So Soft
Soft & Sensual
714-861



Feelin' Fresh
Original
907-750



Cool Confidence
Original
926-777



Cool Confidence
Baby Powder
427-275



On Duty
Unscented
464-351



On Duty
Original
393-970



Black Suede
813-567



Mesmerize
875-874



Wild Country
656-080



On Duty Sport
875-726

**Roll-On
Anti-Perspirant
Deodorant**
Each, 2.6 fl. oz.
reg. \$5
\$3.99 each



Foot Works Arthritis Achy Foot and Muscle Cream

Contains glucosamine and chondroitin. 2.5 fl. oz.

208-400 reg. \$11

\$8.99



Foot Works Maximum Strength Cracked Heel Cream

Transforms the look and feel of dry, cracked heels.

2.5 fl. oz. 086-762 reg. \$11

\$8.99



Foot Works Intensive Callus Cream

Softens and moisturizes dry, rough skin. 3.4 fl. oz.

851-310 reg. \$11

\$8.99



Foot Works Overnight Renewing Cream

With jojoba oil. 3.4 fl. oz.

324-225

reg. \$11

\$8.99



Foot Works Intensive Moisture Foot Cream

Suitable for diabetics.

2.5 fl. oz. 069-016

reg. \$11

\$8.99



Foot Works Deodorizing Spray

Can also be used in footwear.

3.5 oz. net wt. 313-236

reg. \$14

\$10.99

4 in 1:

- Fine-grain file
- Metal file
- Pumice
- Brush



Foot Works Pedicure Tool

592-712 reg. \$11

\$8.99

Kit includes:

- Nail clipper
- Toenail clipper
- Scissors
- Small nail file
- Cuticle pusher



Foot Works Pedicure Kit

Case, 3½" L x 4¾" W.

121-029 reg. \$13

\$9.99



make the great outdoors yours

Our DEET-free repellents protect your family without chemicals that feel harsh on skin. **Bug Guard** repels deer ticks that may carry and transmit Lyme disease.



Bug Guard Plus IR3535® Expedition Aerosol Spray SPF 28
Repels mosquitoes that may transmit West Nile virus for 8 hours.
Repels deer ticks for 12 hours.
4 oz. net wt. **521-370** reg. \$20
\$15.99



Bug Guard Plus Picaridin Aerosol Spray
4 oz. net wt. **315-243**
reg. \$20
\$15.99



Bug Guard Plus Picaridin Pump Spray
4 fl. oz. **827-756**
reg. \$17.25
\$11.99



Bug Guard Plus Picaridin Family-Size Pump Spray
8 fl. oz. **827-780**
reg. \$24.50
\$17.99



Bug Guard Plus Picaridin Towelettes
Each, 9" L x 5½" W, .3 fl. oz.
269-562 reg. \$16
\$12.99 pack of 8



Bug Guard Anti-Itch Spray
2 fl. oz. **827-010**
reg. \$15
\$9.99



With revitalizing honey,
royal jelly and propolis
(tree sap plus beeswax).

bee goodness for hair

Elastine PropoliThera

Volumizing

Enhances texture. Hair looks fuller, thicker, stronger. Each, 16.9 fl. oz.

A. Shampoo 892-607

B. Conditioner 892-870

Damage Repair

Helps hair appear smooth and manageable. Each, 16.9 fl. oz.

C. Shampoo 053-082

D. Conditioner 638-681

reg. \$20 each

\$15.99 each

E. Hair Mask

Enriched with nutrients to help deeply nourish hair and mend damaged split ends.

10.1 fl. oz. **150-301**

reg. \$20

\$15.99

F. Hair Oil Serum

Helps to strengthen, protect, moisturize and smooth hair, and to add shine. 5.7 fl. oz.

895-190 reg. \$22

\$16.99



Elastine PropoliThera Serum Treatment

7.8 fl. oz.

359-821

reg. \$22

\$17.99



Elastine PropoliThera Leave-In Conditioner

8.1 fl. oz.

102-570

reg. \$19

\$14.99



Elastine PropoliThera Aloe Dual-Active Hair Serum

3.4 fl. oz.

102-585

reg. \$30

\$24.99



Elastine PropoliThera Hair Deep Conditioning Treatment Cap

053-761 reg. \$8

\$6.99



**Advance Techniques
360 Nourish
with Moroccan
Argan Oil
Leave-In Treatment**

Moisturizes dry, damaged hair. With vitamins B and E.
2 fl. oz. **511-411**
reg. \$16

\$11.99



**Advance Techniques
Daily Shine Dry Ends
Serum**

Helps mend and nourish split ends instantly. With provitamin B5.
2 fl. oz. **883-190**
reg. \$13

\$9.99



**Advance Techniques
Daily Shine 2-in-1
Shampoo &
Conditioner**

Leaves hair feeling clean, conditioned and frizz-free. With provitamin B5.
11.8 fl. oz. **553-413**
reg. \$19

\$14.99



Root Touch-Up
Instantly covers up roots and bare spots. With black bean and ginseng. Built-in mirror. Each, .25 oz. net wt. reg. \$20

\$15.99 each


Reddish Brown
243-627


Light Brown
244-642


Dark Brown
245-213


Black
245-251

ELASTINE BOTANICALS

Infused with revitalizing
babassu seed oil,
chamomile flower water
and lemon chestnut extract

**Argan & Castor
Anti-Frizz Shampoo**
6.7 fl. oz. 150-866
reg. \$7
\$4.99

**Cherry Blossom &
Hyaluronic Acid
Moisturizing Shampoo**
6.7 fl. oz. 239-943
reg. \$7
\$4.99

**Rosemary & Sea Salt
Volumizing Shampoo**
6.7 fl. oz. 240-556
reg. \$7
\$4.99



**Argan & Castor
Anti-Frizz Conditioner**
6.7 fl. oz. 150-904 reg. \$7
\$4.99



**Cherry Blossom & Hyaluronic
Acid Moisturizing Conditioner**
6.7 fl. oz. 240-059 reg. \$7
\$4.99



**Rosemary & Sea Salt
Volumizing Conditioner**
6.7 fl. oz. 246-831 reg. \$7
\$4.99



**Elastine Salon de Color
Color Vibe
Purple Shampoo**
8.4 fl. oz. **436-109**
reg. \$19
\$14.99



**Elastine Salon de Color
Color Vibe
Purple Conditioner**
8.4 fl. oz. **436-955**
reg. \$19
\$14.99



**Elastine Moisture Essentials
Volume Shampoo**
12.7 fl. oz. **495-106** reg. \$9
\$6.99



**Elastine Moisture Essentials
Volume Conditioner**
12.7 fl. oz. **495-110** reg. \$9
\$6.99



**Elastine HempharmX
Hydrating Shampoo**
13.5 fl. oz. **359-836** reg. \$24
\$20



**Elastine Moisture Essentials
Shine Shampoo**
12.7 fl. oz. **495-125** reg. \$9
\$6.99



**Elastine Moisture Essentials
Shine Conditioner**
12.7 fl. oz. **495-130** reg. \$9
\$6.99



**Elastine HempharmX
Hydrating Conditioner**
13.5 fl. oz. **360-544** reg. \$24
\$20



CHI® Essentials
Revive Keratin + Bonding
Protecting Serum
 3 fl. oz. 451-340 reg. \$42
\$34.99

CHI® Essentials
Revive Keratin + Bonding
Restoring Shampoo
 12 fl. oz. 451-192
 reg. \$25
\$19.99

CHI® Essentials
Revive Keratin + Bonding
Restoring Conditioner
 12 fl. oz. 451-211
 reg. \$25
\$19.99



CHI® Essentials
Replenishing Shampoo
 12 fl. oz. 589-140
 reg. \$22
\$17.99



CHI® Essentials
Moisturizing Conditioner
 12 fl. oz. 589-409
 reg. \$22
\$17.99



CHI® Essentials
Repairing Serum
 6 fl. oz. 589-413
 reg. \$33
\$27.59



CHI® Advanced Ionic Compact Hair Dryer
 Attachments included. **471-474**
 reg. \$150
\$135



BioSilk® Silk Therapy®
 5.64 fl. oz. **011-349**
 reg. \$36
\$29.99



CHI® 1" Volcanic Lava Ceramic Pro Spin 'n' Curl
471-527 reg. \$199
\$179



Avon Detangling Hairbrush
504-815
 reg. \$13
\$9.99



Avon Detangling Comb
504-820
 reg. \$8
\$5.99



CHI® ENVIRO 54® Natural Hold Hair Spray
 10 oz. net wt. **908-450**
 reg. \$26.50
\$21.50



Avon Blow-Dry Round Hairbrush
504-800
 reg. \$19
\$14.99



Avon Compact Hairbrush
504-743
 reg. \$10
\$7.99



Dr. Groot Scalp Fortifying Serum
Treatment
 Moisturizes and helps support healthy hair roots.
 6.7 fl. oz.
782-271
 reg. \$35
\$29



Dr. Groot Scalp Fortifying Hair-Thickening Shampoo
 With coconut oil, cleanses as it helps moisturize dry scalp and hair. 13.5 fl. oz.
778-014
 reg. \$35
\$29



Dr. Groot Premium Scalp Cleansing Brush
 Helps reinvigorate scalp health and stimulate circulation.
065-776 reg. \$19
\$16



Dr. Groot Anti-Dandruff Scalp Care 2-in-1 Shampoo and Conditioner
 Contains 3% salicylic acid, biotin, caffeine, rosemary and menthol.
 10.1 fl. oz.
451-431
 reg. \$28
\$22.99



Dr. Groot Professional Bonding System 01 Bond Fortifying Shampoo
 Helps fortify hair from the roots and visibly restore smoothness.
 13 fl. oz.
701-607
\$30



Dr. Groot Professional Bonding System 02 Keratin Water Treatment
 Water-to-cream formula. Hair looks instantly smoother. Use 2X-3X a week.
 6.7 fl. oz.
701-611
\$30



Dr. Groot Anti-Dandruff Scalp Care Shampoo
 Contains 3% salicylic acid, biotin, caffeine, rosemary and menthol. No silicones.
 10.1 fl. oz.
451-412
 reg. \$28
\$22.99



Dr. Groot Professional Bonding System 03 Bond Fortifying Conditioner
 Instantly helps minimize frizz.*
 8.4 fl. oz.
701-865
\$30

*Based on a clinical test of 19 hair tresses.



Dr. Groot Professional Bonding System 04 Bond Fortifying Instant Repair Serum
 Restorative leave-in serum. Apply to damp or dry hair.
 4.2 fl. oz.
702-130
\$30

WANT GREAT HAIR? START AT THE SCALP.

Dr. Groot Scalp Revitalizing Solution

Think of scalp care as an extension of skin care.

With **biotin** and **capsulated prebiotics**, these formulas offer a uniquely customized solution that gets to the root of your problem.

Scalp Revitalizing Solution Hair Thickening Shampoo

Helps hair look thicker and fuller. Infused with biotin and prebiotics. 13 fl. oz.

715-064

\$30

Scalp Revitalizing Solution Purifying Clay Shampoo

Instantly purify roots, hydrate dry ends. With three kinds of clay (white, herbal, glacial) plus biotin and salicylic acid. 13 fl. oz.

715-098

\$30

Scalp Revitalizing Solution Scalp Relief Tonic

Helps hydrate dry scalp. With calming chamomile, moisturizing niacinamide and cooling menthol.

4.73 fl. oz.

717-110

\$30

Scalp Revitalizing Solution Scalp Soothing Shampoo

Helps refresh, moisturize and comfort your scalp. With biotin and cica extract.

13 fl. oz.

715-083

\$30

Scalp Revitalizing Solution Miracle in Shower Treatment

Hair looks smoother and healthier instantly. With nourishing arginine, panthenol, niacinamide and salicylic acid. 8.4 fl. oz.

715-451

\$30



Shown:
Almond.



❖ Bali® Comfort Revolution® Soft Touch™
T-Shirt Underwire Bra (DF3468)*

Cool Comfort® fabric. 2-way convertible straps.
Back closure. Nylon/spandex.

Sizes: 36-40B; 34-42C,D,DD (all colors). reg. \$48

\$40.99



Shown:
Sandshell.



❖ Bali® One Smooth U® Comfort Stretch Lace
Underwire Bra (DF0084)*

Back closure. Convertible straps. Nylon/spandex. **White, Sandshell, Evening Blush or Black:** 36-40B; 34-42C,D,DD. **Soft Blue Grey or Smart Red:** 36-40C,D; 36-38DD. reg. \$48

\$40.99



Shown:
Black.



❖ Bali® Beautifully Confident with Leak Protection
Liner Brief (DFLLB1)*

Light leak protection liner in crotch. Body and lace:
Polyester/spandex. Crotch lining: Polyester.

Sizes: M, L, XL, 2XL (all colors).

reg. \$15

\$12.99



Shown:
Black.



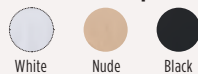
❖ Bali® Seamless Extra Firm Control®
2-Pack Brief (DFX245)*

Ultra-firm control targets tummy, waist and rear.
Body: Nylon/spandex. Crotch lining: Cotton.

Sizes: M, L, XL, 2XL (all colors).

reg. \$37

\$31.99 the pack



Shown:
Nude Dot.



❖ **Bali® Comfort Revolution®
ComfortFlex Fit® Shaping Wireless Bra (3488)***
Full coverage with seamless foam cups. Wide Comfort-U®
straps. Back closure. Nylon/spandex. Sizes: S, M, L, XL,
2XL, 3XL (all colors). reg. \$48
\$40.99



White
Dot



Nude
Dot



Crystal Grey
Dot

Shown:
Almond.



❖ **Bali® Ultimate Smoothing Lightweight
T-Shirt Bra (DF4481)***

Extra wide back and sides. Ultra-flexible foam cups.
2-way convertible straps. Back closure. Nylon/spandex.
Sizes: 34-42C,D,DD; 36-40 DDD (all colors).
reg. \$48
\$40.99



White



Almond



Evening
Blush



Black

Shown:
Black.



❖ **Bali® Lace 'N Smooth Body Shaper (DF8L10)***

Firm-control shaper targets tummy, waist and rear.
Built-in bra with softly lined underwire cups.
Adjustable straps. LYCRA® BEAUTY spandex. Cups/Body:
Nylon/spandex. Crotch lining: 100% cotton.
Sizes: 34-40B,C,D,DD (all colors). reg. \$60
\$50.99



White



Black

Shown:
White.



❖ **Playtex® 18 Hour® Active Lifestyle Wirefree Bra (US4159)***

Back closure. Polyester/nylon/spandex.

White, Light Beige or Nude: 36-42B; 36-44C,D; 38-46DD; 38-44DDD. **Black:** 36-42B; 36-44C,D; 38-44DD. reg. \$39

\$33.99



Shown:
Nude.

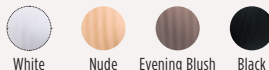


❖ **Playtex® Perfectly Smooth® Wirefree Bra (US4707)***

Back closure. Nylon/spandex, polyester lining.

White, Nude or Black: 36-42B; 36-44C,D,DD; 36-42DDD. **Evening Blush:** 36-44C,D,DD. reg. \$46

\$39.99



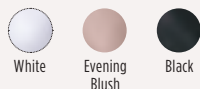
Shown:
Evening Blush.



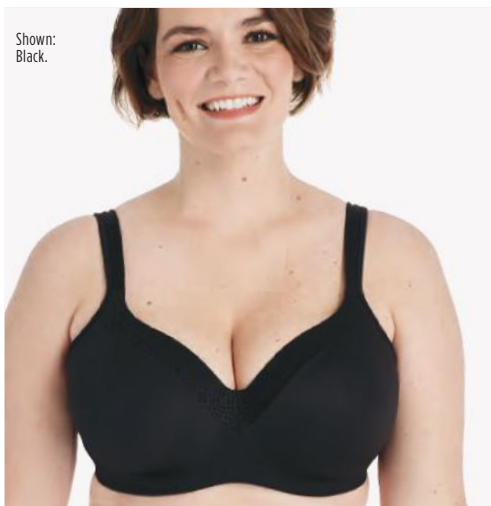
❖ **Playtex® Secrets® Balconette Full-Figure Wireless Bra (US4824)***

TruSupport 4-way system with higher sides, fuller cups, wider straps and a smoothing-back band. Foam-lined wireless cups. Adjustable straps. Back closure. Nylon/spandex. Sizes: 36-44C,D,DD,DDD (all colors). reg. \$46

\$39.99



Shown:
Black.



❖ **Playtex® Secrets® Underwire Full-Coverage Smoothing Balconette T-Shirt Bra for Full Figures (US4823)***

TruSupport 4-way system. Adjustable straps. Back closure. Nylon/polyester/spandex/cotton. Sizes: 36-44C,DDD; 36-46D,DD (all colors). reg. \$46

\$39.99



Shown: White
Bloom Lace.



❖ Maidenform® Lightly Lined® Convertible
Lace Bralette (DM1188)*

Wireless. 3-way convertible straps.
Mesh back panel with back closure. Nylon/spandex.

Sizes: 34-36A; 34-40B,C,D (all colors).

reg. \$40
\$33.99



Shown: Black/
Body Beige
Lining.



❖ Maidenform® Comfort Devotion® Convertible
Full Coverage Underwire Bra (09404)*

SmartZone® cups lift and shape. Lightly lined. 2-way
convertible straps. Back closure. Nylon/elastane.

Sizes: 34-42B,C,D; 34-40DD (all colors).

reg. \$48
\$40.99



Shown:
Latte Lift.



❖ Maidenform® One Fab Fit® Everyday
Full Coverage Racerback Bra (07112)*

Lace back for shaping. Adjustable straps.
Front closure. Nylon/spandex.

Sizes: 36-38B; 34-40C,D; 34-38DD (all colors).

reg. \$44
\$37.99



Shown:
Paris Nude.

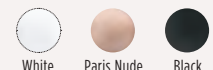


❖ Maidenform® One Fab Fit® Everyday Modern
Demi Underwire Bra (DM7543)*

SmartZone® cups lift and shape.
2-way convertible straps. Back closure. Nylon/spandex.

Sizes: 32-36A; 32-40B; 34-40C,D (all colors).

reg. \$48
\$40.99



cozy meets cool

Easy-wearing pieces with unexpected touches like metal grommets, go-to prints like must-have plaid and jewel-tone shades like turquoise green.



GROMMET
DETAIL
below
neckline

SIDE
INSEAM
pockets and
elastic waist

2-PIECE
SET

❖ **Grommet 2-Piece Set**
Navy set. Top with metal grommet detail and raglan-style sleeves. Pants with side inseam pockets and elastic waist. Polyester/spandex. Center back length: 25½" on M; 27" on 1X. Inseam: 28½" on all sizes. Machine wash, line dry. Imported.

XS(0-2) **836-063**

S(4-6) **836-120**

M(8-10) **836-154**

L(12-14) **836-173**

XL(16) **836-188**

1X(18W-20W) **836-211**

2X(22W-24W) **836-321**

3X(26W-28W) **836-340**

reg. \$56.99

\$44.99 the set

❖ Surplice Wrap Blouse

Turquoise green surplice wrap blouse with poet-sleeve detail at wrist. Polyester/spandex. Center back length: 25" on M; 27" on 1X. Machine wash, line dry. Imported.

XS(0-2) **836-484** XL(16) **836-628**
 S(4-6) **836-594** 1X(18W-20W) **836-632**
 M(8-10) **836-609** 2X(22W-24W) **836-647**
 L(12-14) **836-613** 3X(26W-28W) **836-666**
 reg. \$42.99

\$32.99

❖ Poncho

Berry-colored poncho with collar, front side pockets and contrast trim detail. Body: polyester/viscose. Ribbed trim: viscose/polyester/spandex. Center back length: 25" on S/M; 26" on 1X/3X. Machine wash and dry. Imported.

S/M **836-867** L/XL **836-871** 1X/3X **837-002**
 reg. \$56.99

\$44.99

❖ Plaid Shirt

Relaxed plaid printed shirt with front half-button placket. Polyester/spandex. Center back length: 28" on M; 29½" on 1X. Machine wash, line dry. Imported.

XS(0-2) **836-670** XL(16) **836-723**
 S(4-6) **836-685** 1X(18W-20W) **836-738**
 M(8-10) **836-690** 2X(22W-24W) **836-761**
 L(12-14) **836-704** 3X(26W-28W) **836-852**
 reg. \$42.99

\$32.99





SPACE-DYED TOP with crew neck



DOUBLE-LAYER bell sleeves

❖ **High-Low Top**

Green space-dyed, high-low top with crew neck and long sleeves. Viscose/polyester/spandex. Center front length: 23½" on M; 25" on 1X. Center back length: 31½" on M; 33" on 1X. Machine wash and dry. Imported.

XS(0-2) 044-039	XL(16) 044-230
S(4-6) 044-043	1X(18W-20W) 044-244
M(8-10) 044-058	2X(22W-24W) 044-278
L(12-14) 044-210	3X(26W-28W) 044-282

reg. \$44.99

\$34.99

❖ **Bell Sleeve Top**

Red waffle-textured V-neck top with double-layer bell sleeves. 100% polyester. Center back length: 24½" on M; 25" on 1X. Machine wash and dry. Imported.

XS(0-2) 039-909	XL(16) 040-947
S(4-6) 040-158	1X(18W-20W) 040-985
M(8-10) 040-530	2X(22W-24W) 041-063
L(12-14) 040-818	3X(26W-28W) 041-140

reg. \$44.99

\$34.99

touch of romance

From a dreamy paisley print, to deep red hues, to beautiful bell sleeves, pretty picks that show a softer side of the season.

❖ Paisley Printed Dress

Paisley print dress with tie neckline with metal lace ends, long sleeves with elastic cuffs and back zipper. Lined. Body and lining: 100% polyester. Center back length: 40½" on M; 41½" on 1X. Machine wash, line dry. Imported.

XS(0-2) **037-671**

S(4-6) **037-739**

M(8-10) **037-743**

L(12-14) **037-758**

XL(16) **037-820**

1X(18W-20W) **037-849**

2X(22W-24W) **038-080**

3X(26W-28W) **038-223**

reg. \$53.99

\$42.99



TIE
NECKLINE
with metal
lace ends



INNER ZIPPER
and heel
pull-tab

❖ Inner Zipper Short Bootie

Brown leatherlike bootie with functional inner zipper and heel pull-tab for easy on/off. Metal-coated heel trim and welt detail. Imported.

6 **036-680** 9 **037-064**

7 **036-838** 10 **037-079**

8 **037-026** 11 **037-523**

reg. \$49.99

\$39.99

on-trend trim

NEW

❖ Space-Dye Ribbed Pullover

Grey/brown space-dye knit pullover with long sleeves, and contrasting wine-colored trim detail at neck, gusset and sleeve cuffs. Includes button detail at gusset. Body: polyester/spandex. Trim: cotton/polyester. Center back length: 28½" on M; 30" on 1X. Machine wash and dry. Imported.

XS(0-2) **106-997**

S(4-6) **107-003**

M(8-10) **107-018**

L(12-14) **107-022**

XL(16) **107-041**

1X(18W-20W) **107-060**

2X(22W-24W) **107-075**

3X(26W-28W) **107-080**

reg. \$39.99

\$29.99

SPACE-DYE
knit with
contrasting
trim



❖ Chiffon Crisscross Front Top

Magenta two-layer chiffon top with V-neckline, crisscross detail in front and long sleeves with smocked cuff detail. 100% polyester. Center back length: 25½" on M; 27" on 1X. Machine wash, line dry. Imported.

XS(0-2) **041-188** XL(16) **042-036**
 S(4-6) **041-211** 1X(18W-20W) **042-954**
 M(8-10) **041-910** 2X(22W-24W) **043-161**
 L(12-14) **042-017** 3X(26W-28W) **043-506**
 reg. \$42.99

\$32.99

❖ Half-Zip Pullover

Black velour pullover with contrast magenta half-zipper and stitching. Polyester/spandex. Center back length: 23½" on M; 26" on 1X. Machine wash and dry. Imported.

XS(0-2) **044-560** XL(16) **045-805**
 S(4-6) **045-494** 1X(18W-20W) **045-839**
 M(8-10) **045-513** 2X(22W-24W) **045-858**
 L(12-14) **045-700** 3X(26W-28W) **045-987**
 reg. \$49.99

\$39.99

❖ Two-Tone Sneakers

Magenta space-dyed knit sneakers with tubular laces, back heel tab and ribbed collar at ankle. Man-made materials. Imported.

6 **043-510** 8 **043-783** 10 **044-005**
 7 **043-779** 9 **043-836** 11 **044-010**
 reg. \$39.99

\$29.99



stylish staples

Forever pieces with a luxe feel and contrasting details. Dressed up or down, they're the perfect way to elevate your closet classics.

BOYFRIEND FIT
with a glen-plaid knit fabric

ALL NEW

❖ Pattern Blazer

Boyfriend blazer in a soft glen-plaid knit fabric with single button closure and front flap pockets. Polyester/spandex. Center back length: 28" on M and 1X. Machine wash, line dry.

Imported.

XS(0-2) 102-312

S(4-6) 103-266

M(8-10) 103-342

L(12-14) 104-334

XL(16) 104-349

1X(18W-20W) 104-774

2X(22W-24W) 104-980

3X(26W-28W) 105-091

reg. \$53.99

\$42.99

❖ Sueded Pant

Black pull-on faux-suede pants with side seam pockets. Polyester/spandex. Inseam: 28" on all sizes.

Dry clean only (or spot clean). Imported.

XS(0-2) 105-163

S(4-6) 105-819

M(8-10) 106-045

L(12-14) 106-140

XL(16) 106-155

1X(18W-20W) 106-246

2X(22W-24W) 106-485

3X(26W-28W) 106-633

reg. \$46.99

\$36.99

❖ Soft Loafer

Black soft faux-nubuck loafer with treaded rubber outsole.

Man-made materials. Imported.

6 102-088 9 102-274

7 102-107 10 102-289

8 102-260 11 102-308

reg. \$42.99

\$32.99

SOFT
faux-nubuck
loafer

NEW**❖ Sueded Shoulder Top**

Grey knit long-sleeve pullover with asymmetrical black faux-suede trim panel. Body: viscose/polyester/spandex.

Trim: polyester/spandex.

Center back length:

26" on M; 27" on 1X.

Machine wash and dry.

Imported.

XS(0-2) **106-743**

S(4-6) **106-758**

M(8-10) **106-781**

L(12-14) **106-796**

XL(16) **106-910**

1X(18W-20W) **106-944**

2X(22W-24W) **106-978**

3X(26W-28W) **106-982**

reg. \$49.99

\$39.99



Knit hat not sold.

THE WOW DEAL

5-PIECE SET
ONLY \$40

\$119 VALUE
118-208

**Anew Hydra Fusion
De-Puffing Eye Serum**
.5 fl. oz. **\$34 value**

Anew Platinum Age Delay Serum
1 fl. oz. **\$45 value**

**Skin So Soft Original
Replenishing Hand Cream**
3.4 fl. oz. **\$7 value**

Skin So Soft Original Body Lotion
11.8 fl. oz. **\$15 value**

**Skin So Soft Original
Bonus-Size Shower Gel**
33.8 fl. oz. **\$18 value**

EXTEND YOUR REGIMEN TO YOUR
BODY SO SKIN LOOKS SOFTER,
SMOOTHER AND REVITALIZED ALL
OVER. AND, OF COURSE, DON'T
FORGET YOUR EYES.



Enjoy special prices and offers with an Avon account or Representative.

© 2024 The Avon Company. All rights reserved.

CAMPAIGN 22, 2024

THE AVON COMPANY
165 BROADWAY, NY, NY 10006

avon.com



Brochure effective until _____



See our commitment at
www.avon.com/animal-welfare

RETURN POLICY If you are not satisfied, return any item within 45 days. View Avon's full 45-Day Return Policy at avon.com/shipping-returns.