



THE  
**ELEMENTS**  
OF EXCELLENCE

---

**KaVo Innovations**  
2025



# Contents

<b>04</b>	<b>Imaging &amp; Romexis</b>	
	KaVo ProXam 2D Pro I 3DQ	05
	KaVo ProCeph-one shot	06
	KaVo ProFace	06
	KaVo ProXam iX	06
	KaVo ProXam iOS	07
	Romexis	07
<b>08</b>	<b>Treatment units</b>	
	KaVo amiQa	08
	KaVo uniQa	10
	KaVo ESTETICA E70/E80	12
	KaVo Lumina	14
<b>16</b>	<b>Instruments</b>	
	KaVo eSCALER	16
	KaVo MASTERmatic M45L	18

## **THE ELEMENTS OF EXCELLENCE.** KaVo presents more innovations than ever before.

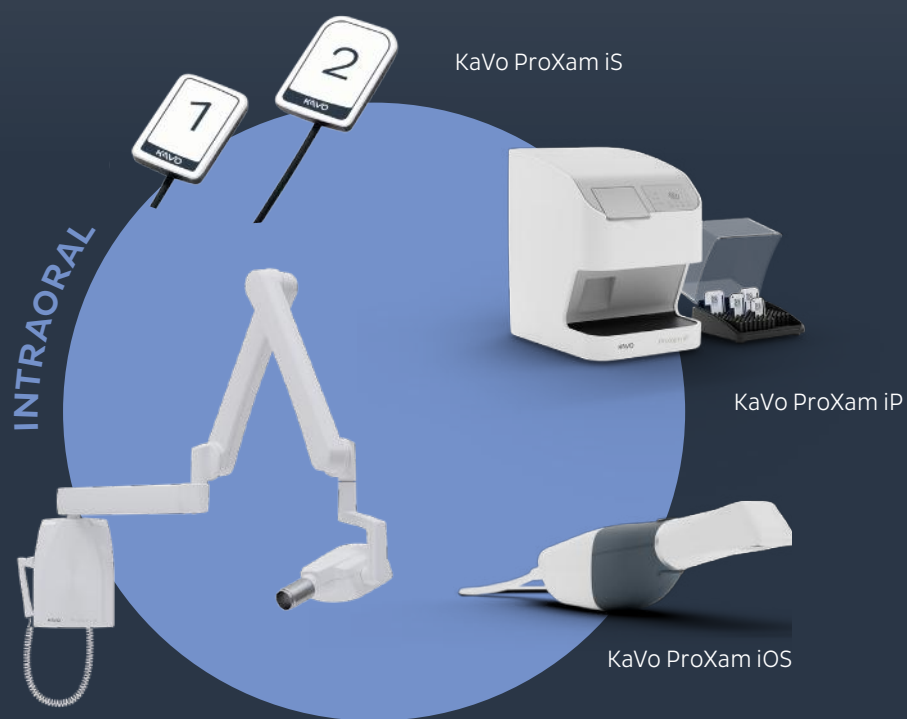
The campaign "The Elements of Excellence" represents everything that defines the company: from the vision, the people, the history, the customers, the quality to every component and, of course, every product.

**Experience the latest multi-faceted innovations and thus KaVo's newest elements.**

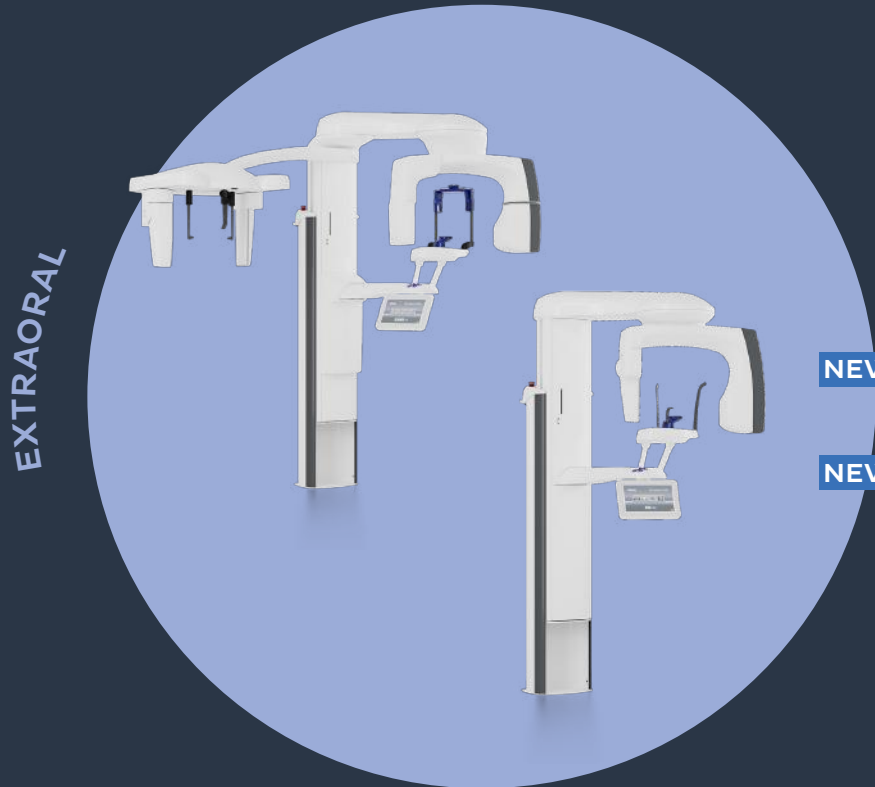
Like a kaleidoscope that constantly creates new, impressive images through the combination of colors and shapes, KaVo continuously develops new technologies and products that redefine and improve dentistry. With these innovations, the company once again underlines its position as a premium manufacturer and its passion for quality, precision and durability.

# KaVo ProXam.

The complete future of digital diagnostics in one portfolio.



KaVo ProXam iX

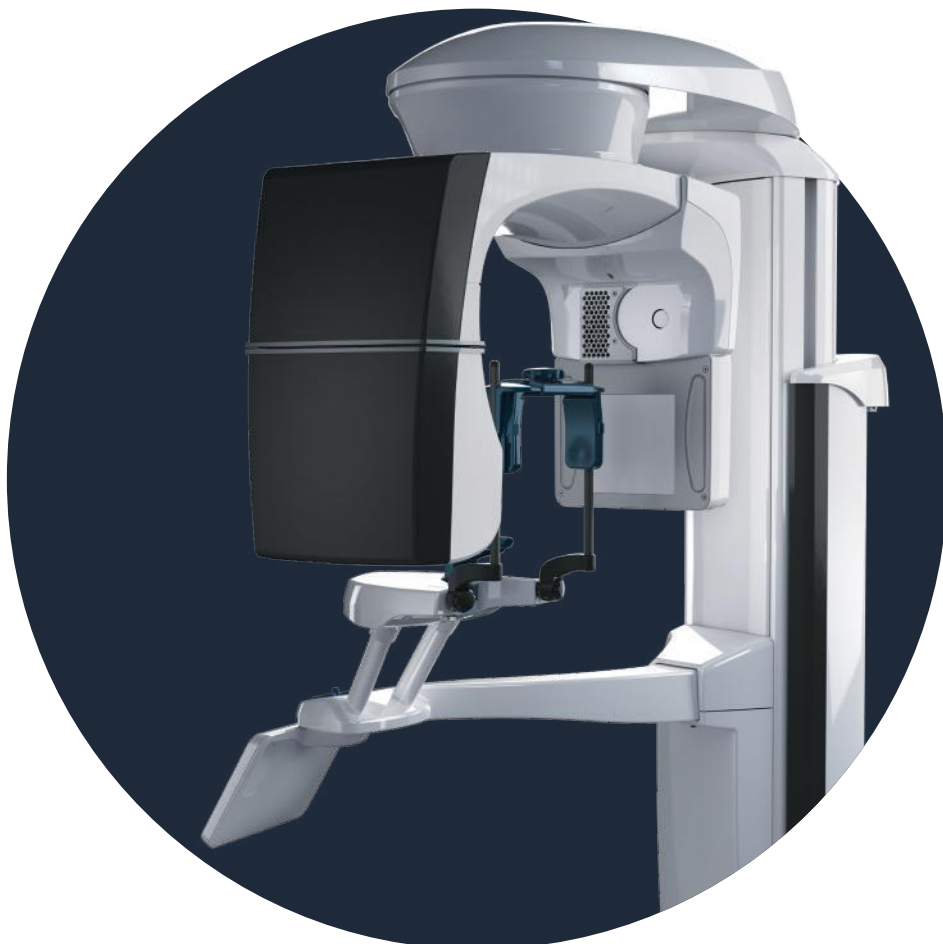


- NEW** KaVo ProXam 2D
- NEW** KaVo ProXam 2D Pro
- KaVo ProXam 3D
- NEW** KaVo ProXam 3DQ
- KaVo ProXam 3DQ Pro

# KaVo Imaging - Welcome to the next generation of dental excellence.

KaVo is expanding its existing portfolio for intraoral and extraoral imaging as well as intraoral scanning for even greater clarity.

This includes an extraoral 2D device, the KaVo ProXam 2D Pro, and an extraoral 3D device, the KaVo ProXam 3DQ. To make it easier to differentiate our products, the current ProXam 3DQ will be renamed KaVo ProXam 3DQ Pro. Further innovations for our extraoral 3D imaging devices are the KaVo ProCeph option and KaVo ProFace for 3D imaging capturing. We are also offering an additional feature for the KaVo ProXam iX in the field of intraoral X-rays and have added the KaVo Imprex mobile scanning station to our portfolio.



## KaVo ProXam 2D Pro | KaVo ProXam 3DQ.

In addition to the existing advantages of the ProXam 2D, the KaVo ProXam 2D Pro impresses with additional special functions thanks to the robot-supported 3-joint arm SCARA technology. The device is optionally available with extended panorama programs and autofocus. Similar to the other 3D devices, the new KaVo ProXam 3DQ enables high-resolution and detailed CBCT images of impressive quality based on extremely small voxel sizes, even with a reduced radiation dose. In addition, the new KaVo 3DQ has a maximum volume size of  $\varnothing 20 \times 10$  cm and has a model scan program for very precise 3D images of impressions and plaster models.

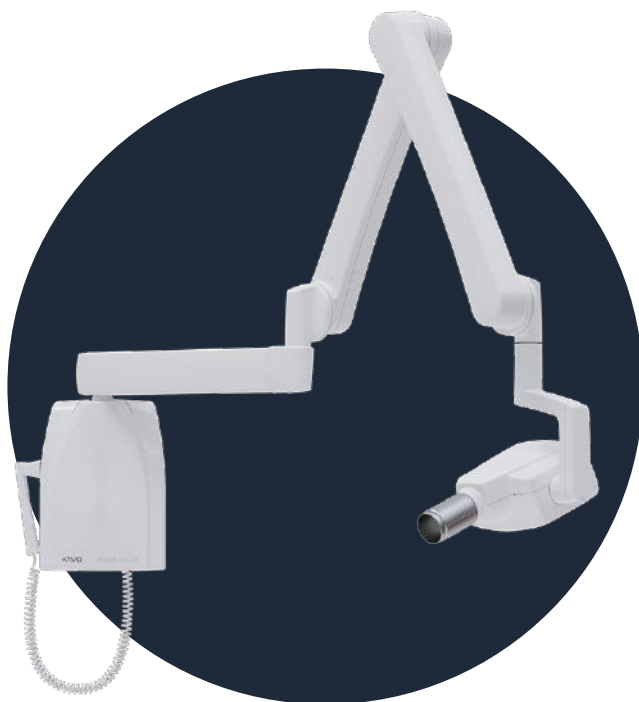


### KaVo ProCeph– one shot.

The KaVo ProCeph cephalometric unit stands for a short exposure time, no movement artifacts and a low patient dose. The automatically aligning device fulfills all requirements for orthodontic imaging. The cephalometric unit is optionally available for the extraoral KaVo ProXam imaging devices (exception: KaVo ProXam 2D).

### Kavo ProFace.

The additional feature KaVo ProFace offers an innovative way to create both a realistic 3D facial image and a CBCT image with just one scan. In addition, a 3D facial image can also be captured independently without exposing the patient to radiation. The integrated system is compatible with all 3D imaging devices.



### KaVo ProXam iX.

The KaVo ProXam iX intraoral X-ray unit impresses with its simple and precise positioning, uncomplicated and excellent 2D imaging processes in high resolution. From IDS 2025, an additional arm length of 1102 mm is available, which enables a maximum reach of 224 cm. With the addition of a sixth extension arm, the intraoral X-ray device can now be used even more flexible.



## KaVo ProXam iOS.

The KaVo Imprex mobile scanning station combines the digital scanning technology of the ProXam iOS scanner with the user-friendly Romexis software, enabling direct transmission of intraoral scans and thus significantly simplifying patient communication.



For more information, see  
[www.kavo.com/en/imaging](http://www.kavo.com/en/imaging)

## ROMEXIS.

The future of digital imaging is optimally networked.

As the world's leading all-in-one software, Romexis is the all-round solution for the digital challenges in today's dental practices and clinics. The proven software links all ProXam devices within the practice and enables dentists to smartly optimize and digitalize their practice workflows. The latest version of the Romexis® software platform 6.4.8 includes the impressive Romexis® VR solution as well as numerous improvements to existing functions in various modules. The Romexis® VR solution is a useful tool for visualizing, examining and analyzing a patient's 3D data using virtual reality.

Discover the potential of virtual reality in dentistry and experience 3D data in a completely new way!



KAVO

# AMIQA

Simply essential.



# Your new friend in everyday practice – the KaVo amiQa.

KaVo amiQa – 100% KaVo. Compact and ready for any indication. Everything you need in a unit that impresses with its quality and value for money. The new KaVo dental unit makes the start into the future perfect.



## The new KaVo amiQa™. Reliably at your side.

The successor to the legendary KaVo Primus 1058 distils the very essence of KaVo: quality for maximum reliability, ingenious hygiene solutions, an impressive ergonomic concept and fresh, modern design.

As well as all this, the KaVo amiQa offers added versatility. The four-instrument holder on the dentist element is ideal for prophylaxis and orthodontics, for example, while the five- or even six-instrument holder makes it a dependable partner for all areas of application – including endodontics and surgery.

The latest-generation amiQa touch display features high resolution, simple operation and superb tactile response. The three available dentist elements (S-table, TM-table and cart) all allow for short, ergonomic reaching distances. With comfortable legroom for dentists and assistants, the stylish patient chair completes the ergonomic concept and allows patients to lie comfortably and relaxed.

With its carefully crafted overall package, the newest addition to the KaVo treatment unit range is your simply outstanding partner for everyday practice.

# Made to be unique.

The most versatile of the KaVo dental units is reinventing itself. Now with widescreen touch display, design light, the KaVo eSCALER, the new KaVo Lumina treatment light and much more.



## The new KaVo uniQa™. Unique as you.

Since its market launch, the KaVo uniQa has stood for individuality and uniqueness like no other unit. KaVo has now upgraded its popular, award-winning unit with additional design and comfort features.

New lighting elements on the curve segment and design lines in the soft upholstery give the patient chair a premium look and provide a modern feel-good experience. The high-quality soft can now be preserved with a stylish premium footrest protector – a little detail with a big impact. The new 14-colour “Inspired by Nature” upholstery colour collection provides an extra dash of individuality.

The KaVo uniQa’s wide range of technical equipment has been a hit since its market launch. Available as a T-table, S-table or cart, each of the three dentist element models now features the latest-generation optimised touch display, with supremely intuitive user navigation, brilliant resolution and precise and rapid reactivity. The new T-table also has an extra feature: the impressive 12.3-inch widescreen. This creates space for new widgets such as the integration of the practice logo.

The latest generation has impressive credentials across the board. Uniquely premium: the new KaVo uniQa.

KAVO  
UNIQA

Uniquely premium.



# KAVO ESTETICA

---

E70 / E80 Vision  
The Masterpiece.



# The Masterpiece: the new KaVo ESTETICA E70/E80 Vision.

Innovation is at the heart of the new Vision series. The integration of new comfort elements defines a new premium level at KaVo. A level that can be felt in daily work.



## The new KaVo ESTETICA™ E70/E80 Vision. Advanced premium.

No other treatment unit combines excellent ergonomics and superlative treatment and patient comfort with superb workmanship to such a high degree as the KaVo ESTETICA E70/E80 Vision. KaVo's top unit has already received several awards for its design and ergonomics, so the bar for the latest generation was already very high.

The unique suspended chair now boasts not only unrivalled ergonomics and legroom, but also stylish design lights that

enhance the high-quality look. The new T-table version features an impressive 12.3-inch widescreen – more than twice the size of the previous display. The user navigation for the control element has been refined, with new widgets prompting smart customisation. And the optimised KaVo touch display boasts even more intuitive operation, high sensitivity and brilliant resolution. KaVo's new masterpiece is the ultimate in quality.

# The new KaVo Lumina – see the difference

Experience the new KaVo treatment light with UX Light technology, SPALight, COMPOshape and fascinating lightness.



## **KaVo Lumina** – enjoy the light side of dental life.

Light quality plays an important role in achieving the best treatment results and real treatment comfort. The new KaVo Lumina treatment light delights practitioners and patients alike.

The newly designed treatment light is elegant, perfectly balanced, light as a feather and precisely adjustable. With its large light field and new UX Light Technology, it produces constant pulse-free light of the purest quality. This creates superb and uniform viewing conditions throughout

the oral cavity right up to the molar region – without any annoying reflections off the anterior teeth.

Lumina also has a special feature for patients: helping to create a calming, feel-good ambience before treatment. The changing colour spectrum of the innovative SPALight mode was designed based on findings from modern colour psychology and creates an atmosphere of calm, harmony and serenity. See the difference right now with the new KaVo Lumina.

KAVO

# Lumina

---

See the difference.



KAVO

# eSCALER

---

Precision and quality  
at the highest level.

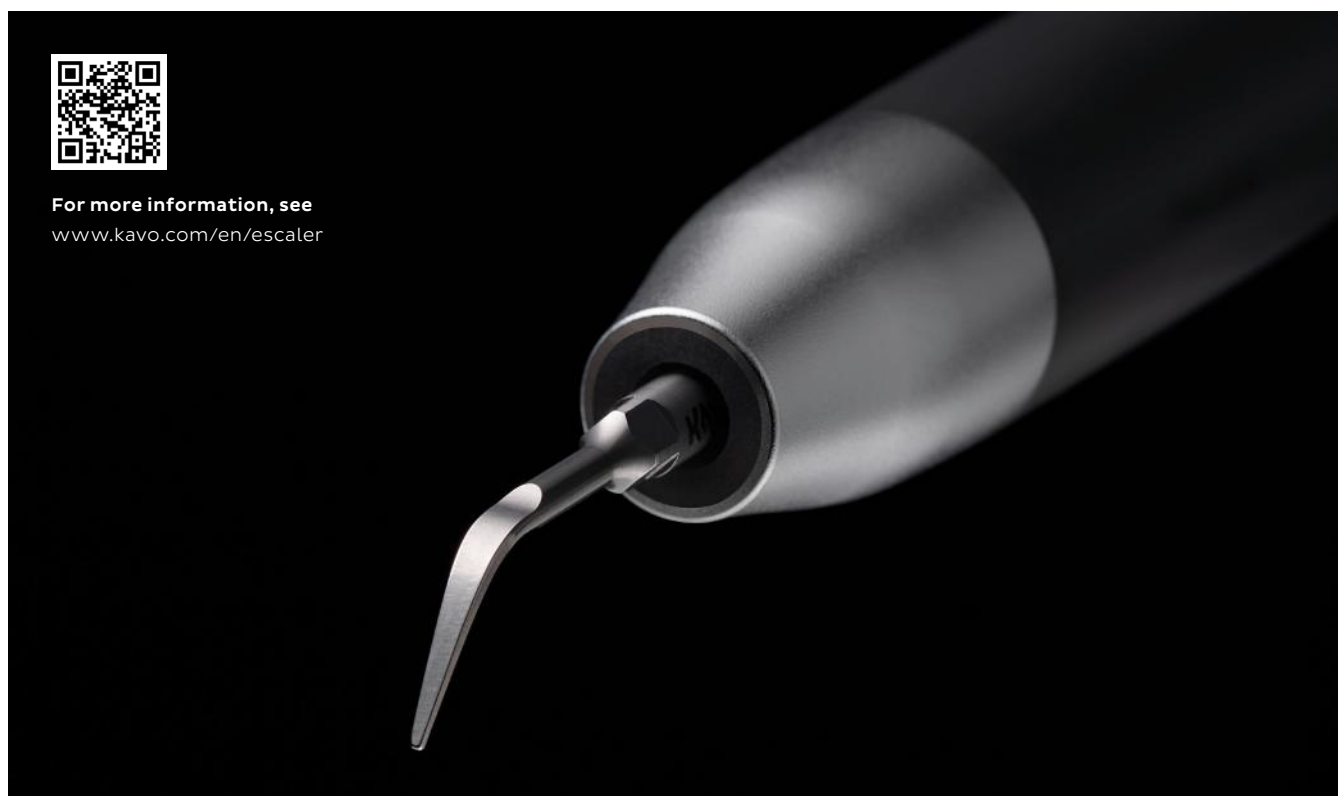


# The new KaVo eSCALER— reliable, efficient, made by KaVo.

Alongside the launch of its new treatment units and new treatment light, KaVo is also ushering in a new era of ultrasonic scalers. 100% Made by KaVo, the new KaVo eSCALER offers impressive performance in both prophylaxis and periodontics.



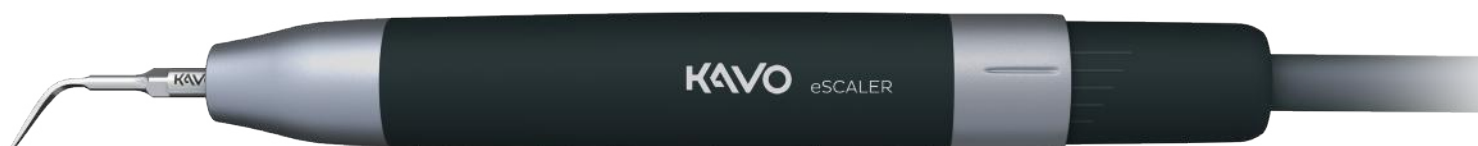
For more information, see  
[www.kavo.com/en/escaler](http://www.kavo.com/en/escaler)



The linear oscillation of the tip at up to 30,000 Hz is particularly effective, and, combined with precisely defined ultrasonic vibration, allows for highly precise and time-efficient tooth cleaning. It removes discoloration, stains and tartar reliably and powerfully, while protecting the tooth substance with the new CARE Technology/Dynamic Performance Technology™. The ergonomically shaped

dental handpiece, daylight illumination and delicate tips, which allow users to access even hard-to-reach areas with ease, provide maximum treatment comfort for both the patient and the practitioner.

Choose reliability and efficiency now with the new KaVo eSCALER.





# The MASTERmatic M45L completes the successful product family of red high-speed contra-angle handpieces.

The precision instruments marked with a red ring are the “superheroes” of everyday practice: they reach high speeds and reliably withstand extreme loads - both during use and during subsequent reprocessing.

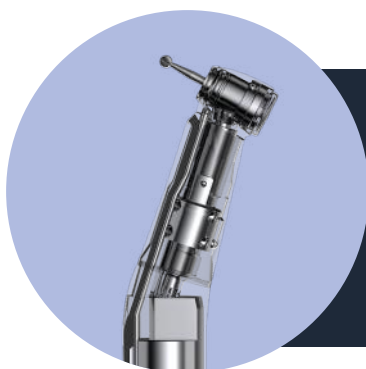
The SURGmatic S15 L Pro, with a transmission ratio of 1:5 and up to 200,000 revolutions per minute, has been enriching the surgical contra-angle handpieces since mid-2022. In the restorative area, the two high-speed contra-angle handpieces EXPERTmatic E25 L and E25 C have been given a facelift. Together with our top seller MASTERmatic M25 L and M05 L, they have become an integral part of everyday practice. With the new MASTERmatic LUX M45 L, they will make everyday work even more ergonomic and efficient in the future.

Optimum accessibility and excellent visibility during treatment have always played an important role in development, particularly in the MASTER segment. The new MASTERmatic LUX M45 L now underlines these efforts even further. With its ingenious head-knee angle

combination, it ensures improved, more ergonomic access to the molar area.

The new high-speed contra-angle handpiece is equipped with KaVo CoolHead technology. This prevents excessive heating of the instrument head in the event of unintentional actuation of the push button during operation and thus ensures additional safety for the patient. Thanks to its compatibility with drill lengths of up to 25 mm, the MASTERmatic M45 L leaves all treatment options open.

Whether head size, head angle or bur compatibility, at KaVo you will find your perfect high-speed instrument - for maximum flexibility and uncompromising treatment quality. This has proven itself and is what makes Dental Excellence so popular worldwide.



**KAVO**  
REPAIR

Take advantage of our instrument repair service. **So that your instrument remains a genuine KaVo.**

Find out more:: [www.kavo.com/repair](http://www.kavo.com/repair)

# Dental excellence in every area.

## What we stand for as a brand

KaVo is a well-established brand with a strong legacy. Our brand and our products represent the highest possible quality and reliability – and have done for over 100 years. This gives our customers peace of mind, so that they can concentrate on doing their best work.

To achieve this, KaVo combines the fundamentals of ergonomics, optimized hygiene, and design into the best overall package without compromise. The perfect interplay of dynamics and expertise keep us at the forefront of modern dentistry.



**KaVo Treatment Units -**  
Invest in your own health



**KaVo Instruments -**  
Feel the difference



**KaVo Imaging -**  
See more, plan better



**Dental Training -**  
Excellent learning



**KaVo Service -**  
We are at your side

*The products, equipment and services shown and described in this catalog are not available in all countries. All information corresponds to the knowledge available at the time of printing. KaVo Dental GmbH accepts no liability for deviations in color and form from the illustrations, errors and misprints and reserves the right to make changes to the brochures at any time.*

*KaVo, ESTETICA, uniQa, amiQa, Lumina, ProXam, Romexis, eSCALER and MASTERmatic are registered trademarks of KaVo Dental GmbH.*