



DUBLIN WATERFORD



WELCOME TO ISE



Darragh Price

CEO / Director of Operations

As we begin 2024 with a renewed sense of purpose, everyone at ISE Ireland is eagerly anticipating the opportunity to welcome you to Dublin and Waterford for an unforgettable educational experience.

2024 will mark our 27th year of operation as a high-quality school, a significant milestone that we are excited to share with all of you.

Your decision to join ISE and fulfill your dreams of learning English in Dublin or Waterford energizes everyone at ISE to provide the best English Language Course possible. We take great pride in your choice to study with us and are committed to exceeding all your expectations during your time at ISE. Throughout your studies, you will have the chance to not only learn and perfect the English Language but also to immerse yourself in the rich culture that Ireland has to offer. This enriching experience will be facilitated by our highly experienced teaching staff and our dynamic social activity calendar.

Thank you for choosing ISE. We look forward to enhancing your educational journey and I am personally excited to meet all of you during your stay with us.

CONTENTS

- 05** • Why study at ISE?
- 06** • Adult Campus, Harcourt Street Dublin
- 07** • Adult Campus, Camden Street Dublin
- 08** • Adult Campus, ISE Waterford
- 09** • What Waterford has to Offer
- 10** • Top 10 Nationalities
- 12** • A Quality school that cares
- 13** • Choose your Course
- 14** • General English Course with Trinity or Cambridge
- 15** • Semi Intensive General English Course with Trinity or Cambridge
- 16** • Intensive General English Course with Trinity or Cambridge
- 17** • General English and IELTS Preparation
- 18** • One to one
- 19** • Our Academic Methodology
- 20** • Student Feedback
- 21** • ISE Continuous Level & Progress Assessment
- 22** • Course Structure
- 23** • Student Progress
- 24** • Internship
- 25** • Trinity's Integrated Skills in English (ISE)
- 26** • Useful Information
- 27** • Student Welfare
- 28** • Accommodation Dublin
- 30** • Accommodation Waterford
- 31** • Social Activities
- 32** • National Geographic Learning
- 35** • English Language Education (ELE)
- 36** • Gallery



@ISEIreland



@iseireland



@LearnEnglish_IE



WHY STUDY AT ISE?

- Since 1997, we have been providing English courses with excellence.
- A professional and friendly approach - teachers and staff who care about you.
- A school you can trust - accredited organisation.
- Modern classrooms in Dublin and Waterford.
- Student accommodation with single, double and shared rooms.
- Support, feedback and advice you need to achieve your aims with English.
- Cultural Activities and Jobs Club.
- Skills Development Programme (tutorials and feedback).
- Our teachers have an internationally recognised English language teaching qualification and are highly experienced.



Recognised by ACELS, a service of
Quality and Qualifications Ireland,
for English language teaching (ELT)

ADULT CAMPUS 1

ISE HARCOURT • DUBLIN

The new Dublin centre at ISE Ireland at 26 Harcourt Street, Dublin has now been opened for a year. We have welcomed more than 700 students this year on their short and long stay courses at the new centre and we are expecting even more in 2024.

Our Harcourt Street premises are located on the Southside of the city. The location is just a few minutes walk from Stephen's Green, a historical park and garden, and just a 5- minute walk from Grafton Street, Dublin's most popular shopping street. The Luas stop (tram) is also minutes away on foot and the Pearse Street and Tara Street railway stations are about 20 minutes away. It is well-served by local buses too, as well as very close to a number of good restaurants, cafes and pubs.



**26 HARCOURT ST,
D2, DUBLIN, IRELAND**

16
Minimum
Age

14
Average
Class Size
(Max 15)

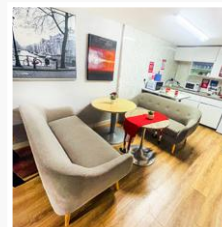
7
Levels of English
Beginner to
Advanced

MORNING CLASSES

Monday to Friday
9:00 - 12:15

AFTERNOON CLASSES

Monday to Friday
13:45 - 17:00



ADULT CAMPUS 2

ISE CAMDEN • DUBLIN

Our Camden Street premises are located on the south side of the city. It is just a few minutes walk from Stephen's Green, a historical park and garden, and just a 5 minute walk from Grafton Street, Dublin's most popular shopping street. The Luas stop (tram) is also minutes away on foot and Pearse Street and Tara Street stations (train) are about a 20 minute walk away. It is also well-served by local buses. The school is also very close to a number of good restaurants, cafes, pubs and nightclubs. And just a 10 minute walk from Temple Bar, Dublin's famous Cobblestoned cultural quarter which has lively street markets, performers, pubs, restaurants and alternative boutiques at every turn.

16

Minimum
Age

14

Average
Class Size
(Max 15)

7

Levels of English
Beginner to
Advanced

MORNING CLASSES

Monday to Friday
9:00 - 12:15

AFTERNOON CLASSES

Monday to Friday
13:45 - 17:00



66, LOWER CAMDEN ST,
D2, DUBLIN, IRELAND



ADULT CAMPUS 3

ISE WATERFORD

Our Tycor Business Park Campus is located in a quiet residential part of Waterford, yet still located in the heart of the city. There is a shopping centre, Lisduggan Shopping Centre, 10 minutes away from the campus where students can find a supermarket and some cafes. Similarly, only 15 minutes walk south of the school is the city centre where students can spend time in local bookshop, the Book Centre, which was once an old theatre now converted into a bookstore and cafe, local shops, bars and restaurants.

Most students opt to walk and cycle to the school as it is in such a central location however it is serviced by a number of local buses which stop 50m from the school.

16
Minimum
Age

8
Average
Class Size
(Max 15)

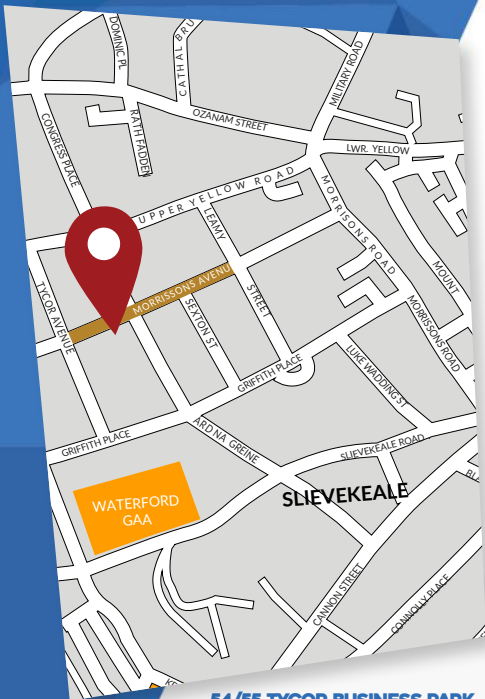
6
Levels of English
Elementary to
Advanced

MORNING CLASSES

Monday to Friday
9:00 – 12:15

AFTERNOON CLASSES

Monday to Friday
13:45 – 17:00



**54/55 TYCOR BUSINESS PARK,
TYCOR, WATERFORD, IRELAND**



WHAT WATERFORD HAS TO OFFER



WHY WATERFORD?

- Clean and safe environment
- Varied entertainment and leisure attractions
- Great restaurants and bars
- Various arts and cultural attractions
- Festivals and Theatre
- Excellent transport links
- Cheaper cost of living than other Irish cities
- Beautiful beaches and mountains
- County Waterford has a stunning 100km long coastline.

WATERFORD WAS VOTED THE BEST PLACE TO LIVE IN IRELAND IN 2021 BY THE IRISH TIMES.

FUN FACTS ABOUT WATERFORD

- Waterford is the oldest city in Ireland, pre-dating Dublin by 74 years.
- Waterford was founded by the Vikings in the 9th century.
- Waterford is the 10th-most-populous settlement on the island of Ireland by population (53,504).
- Reginald's Tower is Waterford's landmark monument and Ireland's oldest civic building - built by Vikings after 914.
- Waterford Greenway is a spectacular 46km off-road cycling and walking trail along an old railway line.
- Ryanair launched the first route in 1985 with daily flights on a 15-seater Bandeirante aircraft, operating daily from Waterford in the southeast of Ireland to London Gatwick.



TOP 10 NATIONALITIES



Brazil



Mexico



Turkey



Italy



Spain



Mongolia



France



Korea



Japan



Taiwan



A QUALITY SCHOOL THAT CARES

The International School of English is a high-quality school dedicated to delivering the highest educational standards in International student care. It has been operating successfully since 1997. We are a dedicated Student Management team who pride ourselves on making your experience memorable and worthwhile whilst achieving your personal student goals. Our experienced and qualified teachers ensure a friendly and professional language learning experience. Lessons are lively and communicative, helping you to progress and develop your English language skills. Students are given weekly progress tests to monitor progress, and tutorials every 6 weeks to assess development and offer suggestions on how to improve.

COURSES AVAILABLE	ISE CAMDEN AND HARCOURT	ISE WATERFORD
General English 15 hours	●	●
Semi Intensive General English 20 hours	●	
Intensive General English 30 hours	●	●
Conversation Classes	●	
IELTS Preparation	●	
One to One	●	●



PROUD USERS OF



Recognized by ACELS, a service of Quality and Certifications Ireland, for English Language teaching (ELT)

CHOOSE YOUR COURSE

**GENERAL ENGLISH WITH
TRINITY OR CAMBRIDGE**

15 hours

**SEMI INTENSIVE
GENERAL ENGLISH WITH
TRINITY OR CAMBRIDGE**

20 hours

**INTENSIVE
GENERAL ENGLISH WITH
TRINITY OR CAMBRIDGE**

30 hours

**GENERAL ENGLISH AND
IELTS PREPARATION**

15 hours

**ONE TO
ONE**

GENERAL ENGLISH COURSES WITH TRINITY OR CAMBRIDGE

15 hours

COURSE DATES	COURSE LEVELS	AVERAGE CLASS SIZE	MINIMUM COURSE LENGTH
Every Monday	Beginner (A1) to Advanced (C1)	12 (15 max)	1 week

You are taught new language structures and vocabulary, and develop your speaking, listening, reading and writing skills through real-life and engaging classroom activities. You are encouraged to work in pairs and groups to ensure classes are communicative and collaborative. You also participate in exam preparation classes to help you to prepare for the exam at your level.

3
HOURS
PER DAY

15
HOURS
PER WEEK

**READING,
WRITING, SPEAKING,
LISTENING, GRAMMAR,
VOCABULARY AND
PRONUNCIATION**

7 LEVELS OF ENGLISH
Beginner, Elementary,
Pre-intermediate, Intermediate,
Intermediate Plus,
Upper-intermediate and Advanced

**DAILY
SCHEDULE**
Monday to Friday

- Morning session - 9:00 to 12:15
- Afternoon session - 13:45 to 17:00

INCLUDED

- Online Placement Test
- Social and cultural programme
- Internet access

Students participate in classes specialising in exam preparation as part of their General English course. Students at Elementary to Intermediate level receive 2 to 3 hours of Trinity ISE exam preparation every Monday and Wednesday. Upper-intermediate and Advanced students receive 3 hours of FCE, CAE or IELTS exam preparation in class every Thursday. In addition, 50% of class time in the last 2 weeks of term is used to focus on exam preparation for the higher levels.

**COURSE BOOK SERIES AND
THE CEFR CV ALIGNED CURRICULUM.**



SEMI INTENSIVE GENERAL ENGLISH COURSES WITH TRINITY OR CAMBRIDGE

20 hours

COURSE DATES

Every Monday

COURSE LEVELS

Beginner (A1) to Advanced (C1)

AVERAGE CLASS SIZE

12 (15 max)

MINIMUM COURSE LENGTH

1 week

You follow the General English and Exam Preparation programme for 15 hours per week. You participate in communicative and collaborative lessons that give plenty of opportunities to develop knowledge of language structures and vocabulary, as well as speaking, listening, reading and writing skills. Students will receive another 5 hours per week of conversation class. This is an opportunity to improve speaking fluency and accuracy by discussing interesting topics and receiving feedback on language errors in context.

3 + 1
HOURS HOUR
PER DAY

20
HOURS
PER WEEK

**READING, WRITING, SPEAKING,
LISTENING, GRAMMAR,
VOCABULARY, PRONUNCIATION
+ CONVERSATION**

7 LEVELS OF ENGLISH
Beginner, Elementary,
Pre-intermediate, Intermediate,
Intermediate Plus,
Upper-intermediate and Advanced

**DAILY
SCHEDULE**

Monday to Friday

- Morning session - 9:00 to 12:15
- Afternoon session - 13:45 to 17:00

INCLUDED

- Online Placement Test
- Social and cultural programme
- Internet access

Students participate in classes specialising in exam preparation as part of their General English course. Student at Elementary to Intermediate level receive 2 to 3 hours of Trinity ISE exam preparation every Monday and Wednesday. Upper-intermediate and Advanced students receive 3 hours of FCE, CAE or IELTS exam preparation in class every Thursday. In addition, 50% of class time in the last 2 weeks of term is used to focus on exam preparation for the higher levels.



**COURSE BOOK SERIES AND
THE CEFR CV ALIGNED CURRICULUM.**

INTENSIVE GENERAL ENGLISH COURSES WITH TRINITY OR CAMBRIDGE

30 hours

COURSE DATES

Every Monday

COURSE LEVELS

Beginner (A1) to Advanced (C1)

AVERAGE CLASS SIZE

12 (15 max)

COURSE LENGTH

3 months +3 months

Our 30 hours course consists of 3 hours of General English + Exam Preparation in the morning, and 3 hours in the afternoon. You study new language structures and vocabulary, and develop your speaking, listening, reading and writing skills. You are encouraged to work in pairs and groups to ensure classes are communicative and collaborative. You also participate in exam support sessions preparing you for the exam at your level.

3 + 3
HOURS HOUR
PER DAY

30
HOURS
PER WEEK

**READING, WRITING,
SPEAKING, LISTENING,
GRAMMAR, VOCABULARY,
PRONUNCIATION**

7 LEVELS OF ENGLISH
Beginner, Elementary,
Pre-intermediate, Intermediate,
Intermediate Plus,
Upper-intermediate and Advanced

**DAILY
SCHEDULE**

Monday to Friday

- Morning session - 9:00 to 12:15
- Afternoon session - 13:45 to 17:00

INCLUDED

- Online Placement Test
- Social and cultural programme
- Internet access

Students participate in exam preparation classes as part of their General English course. Students at Elementary to Intermediate level receive 2 to 3 hours of Trinity ISE exam preparation every Monday and Wednesday as well as throughout their course. Upper-intermediate and Advanced students receive 3 hours of FCE, CAE or IELTS exam preparation in class every week. In addition, 50% of class time in the last 2 weeks of term is used to focus on exam preparation for the higher levels. Students do progress tests twice a term and receive 1:1 feedback during their individual tutorial.

**COURSE BOOK SERIES AND
THE CEFR CV ALIGNED CURRICULUM.**



GENERAL ENGLISH COURSE AND IELTS PREPARATION*

25 Weeks Programme • 15 hours per week

COURSE DATES

Every Monday

COURSE LEVELS

Upper-Intermediate (B2)
to Advanced (C1)

AVERAGE CLASS SIZE

12 (15 max)

COURSE LENGTH

13 weeks: G.E.
+ 12 weeks: IELTS

You follow the General English and IELTS Exam Preparation programme for 15 hours per week. You participate in communicative and lively lessons that give plenty of opportunities to develop knowledge of language structures and vocabulary, as well as speaking, listening, reading and writing skills. This is a great opportunity to successfully prepare for the four exam papers in the IELTS exam: Reading, Writing, Listening and Speaking.

3
HOURS
PER DAY

15
HOURS
PER WEEK

EXAM
STRATEGY AND
TECHNIQUES

READING, WRITING, SPEAKING,
LISTENING, GRAMMAR,
VOCABULARY AND
PRONUNCIATION

**DAILY
SCHEDULE**
Monday to Friday

- Morning session - 9:00 to 12:15
- Afternoon session - 13:45 to 17:00

INCLUDED

- Online Placement Test
- Social and cultural programme
- Internet access

Students participate in classes specialising in exam preparation as part of their General English course. Student at Elementary to Intermediate level receive 2 to 3 hours of Trinity ISE exam preparation every Monday and Wednesday. Upper-intermediate and Advanced students receive 3 hours of FCE, CAE or IELTS exam preparation in class every Thursday. In addition, 50% of class time in the last 2 weeks of term is used to focus on exam preparation for the higher levels.

*IELTS Preparation courses all require a minimum of 8 people to run.
If this number is not reached, an alternative course may be offered.

ONE TO ONE

HOURS PER WEEK

up to 15 hours

DAILY SCHEDULE

at a time that suits you

We offer private tuition of up to 15 hours per week which can also be combined with other courses. You will be asked to complete a Placement Test and Needs Analysis prior to beginning your course so an individual bespoke course can be designed to suit your exact learning requirements. It is the perfect option if you have specific targets or limited time.



OUR ACADEMIC METHODOLOGY INCLUDES



TRINITY EXAM PREPARATION SESSIONS

Every week

We provide free Trinity exam classes for every student taking the Trinity exam at ISE Dublin or Waterford. They provide our students with the support they need to face the exam with confidence. Students learn about the structure of the Trinity exam, and the various exam tasks they will face. They do practice exam tasks and receive feedback and advice on how best to approach each different task type. With our Trinity ISE expert's guidance, our students prepare their topics for the Speaking & Listening module as well as practise for the Reading into Writing module.

Please check locally for the dates and times of these classes.

REAL- LIFE AND CULTURE CLASSES

Teachers take their classes on a cultural visit at least once every two months. Places to visit include one of many museums or art galleries. Teachers provide a task for students to do while on the excursion.

ISE courses focus on 'Real-Life English' in an Irish and global context.



REMEDIAL CLASS

Every week

We offer weekly remedial classes for our lower-level students, which include beginners, elementary, and pre-intermediate levels.. These classes aim to provide additional support to those who are facing challenges in their current courses, ensuring a more comprehensive and better learning experience.

STUDENT FEEDBACK

ISE values our students' feedback so we can continue to improve our services. We ask for feedback in 4 ways:

IN CLASS WEEK 4

In week 4 of every term, teachers ask for feedback on his/her individual classes. This is an opportunity for students to let their teacher know what they find beneficial and make any suggestions, for example, more feedback on language use after speaking activities.

CLASS & DOS: PROGRAMME DEVELOPMENT & DELIVERY REVIEW

This takes place each term, representatives from each class meet with an Academic Manager to give feedback about all aspects of life at ISE. The Management team meet to discuss the feedback and identify practical solutions to the suggestions made. Reports about the actions taken will be posted on school noticeboards.

IN TUTORIALS WEEK 6 AND 12/13

Question 1: What do you think of your classes? This is another opportunity for students to inform their teacher about what works well and tell them of any suggestions they have, for example, more opportunities in class to improve their writing skills.

STUDENT FEEDBACK FORMS: NEW STUDENTS (WEEK 1), ALL STUDENTS (AT ANY TIME) & COMPLETED STUDENTS (END OF COURSE)

At induction, new students are given a feedback form to complete at the end of their first week at ISE. The purpose of this form is to check whether our new students are happy with their classes, information provided and their accommodation. If anyone is experiencing difficulties, it means we can offer immediate support, advice and practical help where needed.

We also invite ISE students to give their feedback at any time during their course using the General Feedback form. This helps us to monitor student satisfaction and respond to any issues raised.

Finally, when ISE students complete their course, we ask for feedback so we can monitor student satisfaction and continue to make any improvements to ISE programmes or services, in response to suggestions from our students.

ISE CONTINUOUS LEVEL & PROGRESS ASSESSMENT

1
STEP

PLACEMENT ONLINE TEST

A week before your arrival at our school you will be assessed for your CEFR level using a multiple-choice test, which tests your grammatical and vocabulary ability. A short speaking assessment will also be done to assess your starting spoken and listening level. This overall ability will then form the ADOS's opinion on appropriate placement.

2
STEP

PROGRESSION TESTING

As part of a continuous assessment every student will do a mini-check of covered areas and do a consolidation exercise at least once a week. An overall progression database will be built for every student. We have a centralised student database, which tracks your progress and development at every step of the term.

3
STEP

MOVING LEVEL

Generally teachers will recommend a student to change level based on ability, attendance, participation and progress. If you have been in a level for more than 12 weeks and feel you are ready to move, you can request a movers test to check your level.

4
STEP

CONTINUOUS DEVELOPMENT

You are given two tutorials per term. These are an opportunity to self-reflect on your progress and talk one-to-one with your teacher about how you are getting on. Your teacher will assess your progress and development in relation to the overall course learning outcomes and will make suggestions on how you can improve.

5
STEP

FEEDBACK MEETING WITH THE EDUCATIONAL DIRECTOR

We encourage feedback from you the Student. Our teachers are here to give you advice, guidance and support on your learning journey. The Director of Studies is available by appointment. The notice board in the main common area shows any new academic bulletins.

COURSE STRUCTURE

Sample week

	9:00 to 12:15	12:30 to 13:30	13:45 to 17:00
Mon	Focus on General English: Grammar, Vocabulary, Pronunciation + Language Skills: Speaking, Listening, Reading and Writing.	Conversation Class	Focus on General English: Grammar, Vocabulary, Pronunciation + Language Skills: Speaking, Listening, Reading and Writing.
Tue			
Wed			
Thu	Exam Preparation		Exam Preparation
Fri	Revision, Progress Test, Marking and Fluency Practice/ Games		Revision, Progress Test, Marking and Fluency Practice/ Games

ISE courses also include a weekly focus on Real-life English + a monthly focus on Irish and World Culture.

English for Specific Purposes Learners who require English to further their careers can avail of courses tailored for specific industries.

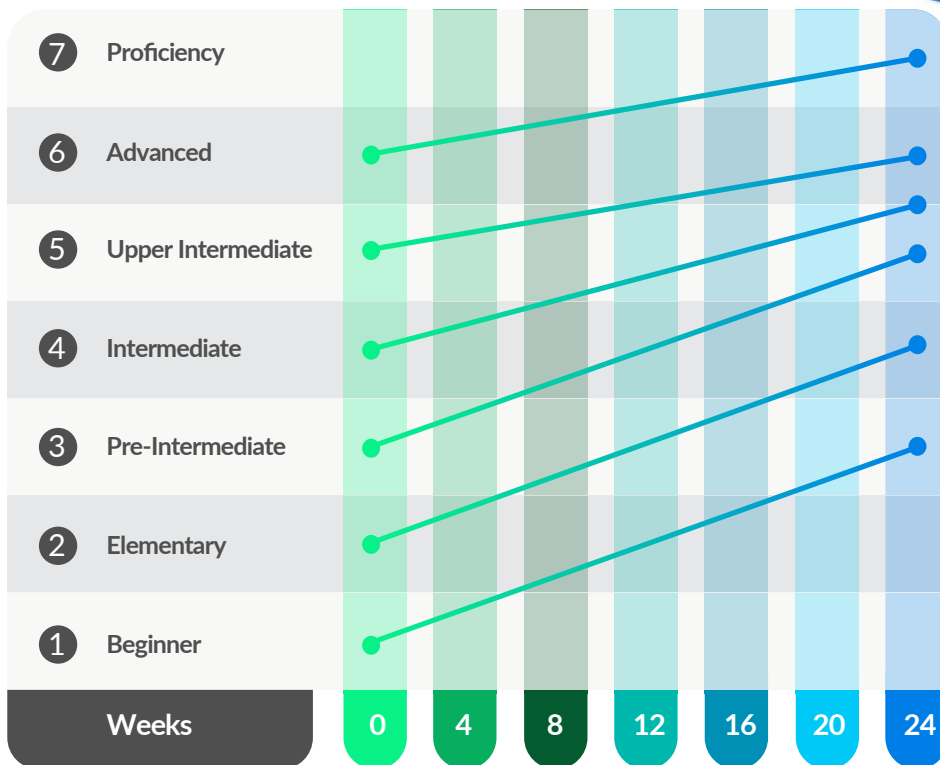
Homework. Your teacher will give you regular homework to complete.

Group classes last for three hours, in language development classes students focus on areas such as grammar, vocabulary and pronunciation.

Social Programme Learners are encouraged to participate in a broad range of social activities they are ideal opportunities to use your newfound skills, whilst meeting new people and having fun.

In our Conversation lessons, we focus on developing your skills and vocabulary through speaking and listening. In our Conversation Classes, you will:

- Take part in question-and-answer sessions with your teacher on a variety of topics
- Get lots of practice in forming and asking your own questions
- Have lots of chances to discuss issues with your classmates
- Have lots of chances to learn new vocabulary as you speak"



The above graph shows the relationship between the levels and the number of weeks according to each student's progress and ability at the end of each compulsory period. Our teachers will make students aware of opportunities and services to assist them if they are identified as at risk of not making satisfactory course progress.

INTERNSHIP

Course Code: INT

MINIMUM LEVEL OF ENGLISH

Intermediate (B1+)

MINIMUM AGE

21

AVAILABLE FOR

EU students

Before you even arrive in Ireland, we will have made all the arrangements for an Internship placement suited to your specific requirements, taking into consideration your professional specialisation, qualifications, work experience, level of English, age and duration of your stay.

You can combine your Internship) with any English course. Minimum course length is 4 weeks by minimum of 8 weeks unpaid placement.

INTERNSHIP PLACEMENT IN A WIDE RANGE OF FIELDS:

- Hospitality and Tourism
- Secretarial and Office
- Administration
- Business Services
- Sport and Leisure
- Retail
- Environment
- Finance
- IT / Computing
- Culture and Heritage

BENEFITS OF THIS PROGRAMME:

- 20 English hours per week
- 20 to 40 hours work per week
- A certificate of achievement
- A skills assessment Certificate
- A reference letter

*This programme is not recognised by ACELS

TRINITY'S INTEGRATED SKILLS IN ENGLISH (ISE)

TRINITY
COLLEGE LONDON

Registered Exam Centre 61586

Trinity's Integrated Skills in English (ISE) is a contemporary four skills qualification intended for young people and adults – typically at school, college or university. It is also suitable for teachers and other adults who require a respected English language qualification.

ISE assesses students' ability to interact in English in an authentic and meaningful way through the use of integrated reading and writing tasks and integrated speaking and listening tasks. Preparing for ISE builds real-life English skills and transferable skills required for academic study and employability.

OVERVIEW & RESOURCES

There are two exam modules: Reading & Writing and Speaking & Listening.

The exam modules can be taken together, or at different times, when students are ready. Students must pass both modules to gain an ISE qualification.

ISE is available at five levels from A2 to C1 on the Common European Framework (CEFR), so there is a level for every learner.

WHAT IS THE TRINITY ISE EXAM?

The Integrated Skills in English (ISE) exam is an international English language test offered by Trinity College London. Trinity ISE tests all four English language skills – speaking, listening, reading and writing.

The ISE exam is a widely recognized test worldwide.

The exam tests your ability to interact in English through integrated reading & writing tasks and integrated speaking & listening tasks. Preparing for ISE helps you build real-life English and transferable skills which are required for academic study and employability.

YOU CAN TAKE THE TRINITY ISE EXAM AT  **ISE**
Est. 1997

USEFUL INFORMATION

ISE POLICY:

All registered English language Stamp 2 study visa learners are required to take an external examination to verify their learning. Our courses include some exam preparation so that students can prepare for the exams.

It is the student's responsibility to choose which exam to take and when they are going to take the exam, and it is very important that students inform our Exams Administrator well in advance so this can be organised.

ISE is a test centre for the Trinity ISE exams. Students can choose to take the Trinity ISE exam for their level (from Foundation (A2) to ISE III (C1)). Alternately, students can choose to take the FCE (First Certificate in English), CAE (Certificate in Advanced English), BEC (Business English Certificate) or IELTS (International English Language Testing System) exam off-site.

PLACEMENT TEST:

- All students are given an online placement test before starting their course to make sure they start at the correct level.

The test should be completed the week before the start of the course. A link will be provided to schedule a test once the course is booked. A student can not start classes until the test is completed.

- International student documents as proof of booking will be issued 5-7 days from start date.

- For Non-EEA Students- all documents for IRP application will only be issued once the student has started their course.

IRELAND BANK HOLIDAYS 2024

- **St Brigid's Day** - February 5th
- **St. Patrick's Day** - March 18th
- **Easter Monday** - April 1st
- **Early May Bank Holiday** - May 6th
- **June Bank Holiday** - June 3rd
- **Summer Bank Holiday** - August 5th
- **Halloween Bank Holiday** - October 28th
- **Christmas Day** - December 25th
- **Stephen's Day** - December 26th

• **School Christmas Break**

December 23rd, 2024 to January 3rd, 2025

- **Last day of classes** - December 20th

- **Classes will be returned** - January 6th, 2025

EXAMINATION / EXAM BODY REGISTRATION

Trinity ISE Foundation

Trinity ISE I

Trinity ISE II

Trinity ISE III

FCE

CAE

BEC

IELTS

STUDENT WELFARE



Student Services is dedicated to ensuring each student attending ISE Ireland is aware of the resources the school offers through their department. This includes college and career counselling, academic assistance, student activities that incorporate speaking and listening, exam workshop, and health insurance assistance. We understand our students are far from home and strive to ensure that they are well taken care of while attending ISE Ireland. It is our goal to make every student feel like a member of the ISE Ireland family and to be successful in each aspect of their learning experience.

- A warm welcome, induction and orientation
- Placement test and assessment
- An introduction to our team and students
- Information on ISE, the school, areas of interest and our facilities
- Free Wi-Fi
- Dedicated 24 hour emergency line
- An exciting and active social programme so you can make new friends

CENTRE MANAGER AT YOUR SERVICE

Our Centre Manager will welcome you to ISE and will be there to help you during your time at the school. Our Centre Manager will be your first contact when you arrive. Afterwards, you will be given an Induction. Our Centre Manager will provide you with the necessary letters you need to open a bank account and go to GNIB. You will find our Centre Manager in our school's reception area - always happy to help you with your queries and offer advice and guidance.

ACCOMMODATION DUBLIN

HOMESTAY

Homestays are the best option to experience the culture deeper and learn further about local people. This is highly recommended for students who want to feel closer to the Irish life style, including home cooking and the opportunity of practicing the language through conversation. The students can also experience living in a very typical environment, which enriches their immersion in the local culture. Families come from a variety of backgrounds from traditional Irish families to modern-day families where both parents work.

• DISTANCE FROM SCHOOL

Host Families live in suburbs away from Dublin city centre close to public transport services. It is necessary for all students to travel to school by public transport. We advise all students to expect a journey time of at least 40 minutes.

• FACILITES

Single or twin room , Shared family bathroom, Light laundry facilities, Host families also provide 'half board', meaning breakfast and an evening meal, Monday to Friday, and breakfast, small lunch and evening meal on Saturday and Sunday. Special request (dietary, pets, children etc) must be made at the time of the initial booking.

TIPS:

Be open and communicate
Attend the family meals
Respect the schedule/rules
Accept the differences
Mind your manners
Participate in activities
Benefit from daily conversations
Be fair and honest when problems arise



ACCOMMODATION DUBLIN

STUDENT RESIDENCE

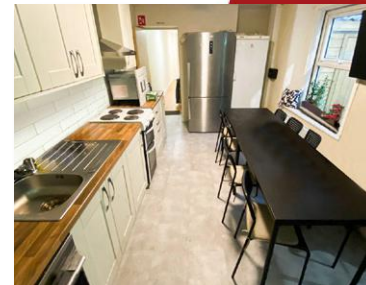
Our houses are intended for individuals who really want to enjoy the student accommodation experience. All of our residences are located in safe areas of the city and most of them are close to the College. These residences are well equipped with all standard conveniences such as washing machine, dishwasher, microwave, cooker and central heating. Free broadband Internet access. Our student residences are outsourced.

• DISTANCE FROM SCHOOL

Most of our houses / apartments are located at a walking distance to Dublin city center (20-40 minutes on foot). Other accommodations are within 40 minutes by public transport or by bicycle. ISE do not guarantee availability in central accommodations.

• FACILITIES

Single, twin and multi-bedded room
Washing and cooking facilities for self-catering, high-speed Wi-Fi connection and complete bedding. Our prices include the bills (electricity, gas, water, bins) and free Wi-Fi Internet connection.



ACCOMMODATION WATERFORD

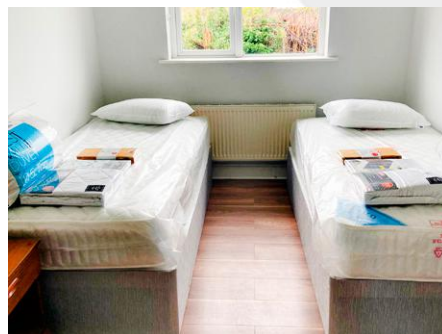
STUDENT RESIDENCE

Our budget student residence is suitable for people who enjoy cooking, socializing and sharing their living space with others. It is located in a safe residential area close to the school (20- 25 minutes on foot). There are two large supermarkets within a very short walking distance and there is a bus stop located only 5 minutes away. There is a regular bus service to the city center and the school even though both locations can be reached walking. The residence offers single, twin, multi-bedded rooms and two shared bathrooms. The common space is fully equipped with all standard conveniences: washing and cooking facilities and Wi-Fi connection. Our prices include bills (electricity, gas, water, bins) and free Wi-Fi Internet connection.



HOST FAMILY ACCOMMODATION

Our Host Families are situated at different locations in Waterford city and the nearby town of Tramore. They are all within walking distance or a short bus trip (up to 30 min) to school. All of our hosts are Garda vetted, friendly, helpful and eager to meet people from different countries and cultures. Bills, bedding and WIFI are included.



SOCIAL ACTIVITIES

WATERFORD

Although Waterford is the oldest city in Ireland and boasts a wealth of cultural history, it has developed over the past 20 years and has become one of the most popular destinations for travellers and students! With its location on the coast, Waterford offers a number of beautiful beaches that can be visited and enjoyed all year round. The city centre is a cultural hub full of museums and tours but also has a lively social scene and a bustling commercial centre.



DUBLIN

The Social Activities Department devises an exciting social calendar for you to enjoy every month. You will visit Dublin's many places of interest, such as Museums and Art Galleries, as well as beaches and countryside. You will go on tours around the city, and learn about the city's history and culture. Your teacher will take you on class excursions, and the school also offers trips outside of class time for you to enjoy. You will also learn about Irish culture in your class, such as Irish expressions and slang, typical Irish traditions and food, Irish myths and so on. ISE also hosts many parties for you to enjoy, such as Christmas and Easter parties and Talent Show competitions as well! The winner of the last Talent Show won a trip to Madrid. Take part, practise your English and make friends!



SOME OF OUR ACTIVITIES INCLUDE

St Patricks Day

This is our favourite time of year, we get to revel in the festivities all week long at ISE, from treasure hunts to 'Craic agus Ceol' (Fun & Music) and absorbing what it really means to be Irish just for one day.

Movie Night

We host regular movie nights here at ISE on our big screen projector. All types of movies are selected for our students' enjoyment. Sit back, relax and enjoy some popcorn at this free event!

Job Club

Want To Improve Your CV or Cover Letter? Would you like to get some tips and valuable advice on how to get a job in Ireland? The job club helps students learn about employment culture in Ireland and it is free to attend!

AND MANY MORE...

PROUD USERS OF

NATIONAL GEOGRAPHIC LEARNING

The Center Island Ferry offers an exceptional view of the Toronto skyline, including the impressive CN Tower.

Destination... here

1 A trip that doesn't involve packing for two weeks or finding your passport may not seem like the ⁷⁷highlight of your travel agenda, but it can be just as rewarding. (Reading) Context: Leisure

I live in Toronto, Canada's largest city and one of its most popular ⁷⁸tourist destinations. And yet, when I'm looking for a way to spend my time off, more often than not I ⁷⁹read out of the city.

5 This year I'm determined to change that. Why is it I always feel the need to travel hundreds or thousands of miles to explore when I have so much to learn on my doorstep? (Reading) Context: Leisure

⁸⁰Do you... ⁸¹Want to try it too? Here are five tips to ⁸²set about seeing your city through new eyes. (Reading) Context: Leisure

1 Take a historical tour.

Sure, you can tell a tourist the names of the buildings or tourist spots in your hometown, but do you know their history? Those hop-on, hop-off bus tours might be meant for tourists, but they're a great way to improve your local history knowledge. Plus, taking note of what visitors find interesting can be fascinating, allowing you to see what might at first seem uninteresting in a whole new light. If there is no tourist bus, try joining a free walking tour. It's a great way of not only discovering things you didn't know about your city, but also meeting new people.

2 Get a room.

Waking up in a hotel or bed and breakfast is a tried-and-tested way to set the mood for exploring.

If you live in a suburb, head into the city. If you live in the city, consider spending a weekend getting to know the nearest town. The added excitement of being away from home for the night will only add to the day's fun.

3 Set a date.

20 There are places I pass on a regular basis in Toronto. Every time, I promise myself that one day I'll check them out. Take it from me: it will never happen without a plan. So pull out your calendar, set a date and keep it.

4 Act like a tourist.

I'm not suggesting you stand in the middle of the street taking selfies, while the locals angrily try to get past, but do pop into the tourist information centre, look out for upcoming events and follow local websites to find out what's on.

5 Take something small and make it bigger.

Your daily wander around the block could turn into a walk around a new neighbourhood. Friday pizza night at home? Why not make it a mission to test out the newest pizzeria in town? You'll be surprised how simple adjustments to your everyday routines can broaden your experiences.

20 Discovering hidden places around you and being a tourist in your own city can not only be fun, but bearing in mind how much travelling can contribute to the climate emergency, it can also help save the planet. So, when planning your next holiday, start first by exploring your hometown!

EXPLORE MORE!

Search online for interesting things you can do in your town or region that you didn't know about or have never done.

37

4D Understanding turn-taking styles

LESSON GOALS

- Understand the main turn-taking styles
- Adapt your style to communicate more effectively
- Participate and invite others to participate in a group discussion



SPEAKING

1 Work in pairs. Read the situations and discuss the questions (1–3).

- a You're at a café with a friend you haven't seen for many years. There are pauses in between questions and answers from you and your friend.
- b You're talking to your friends. You ask questions to invite each other to speak. You speak fairly fast but rarely interrupt each other.
- c You're with some friends. They're speaking really fast. You're trying to participate, but they are interrupting each other and speaking loudly.

- 1 Who do you have similar styles of conversations with?
- 2 In which type of situations are you the most and the least comfortable? Why?
- 3 What kinds of people would find quieter conversations, like in the first scenario, more difficult? Who might find noisier conversations difficult?

LISTENING

2 **AVL5** Listen to three conversations. Match them with the situations in Exercise 1. Which group ...

- 1 has the most similar conversation style to the one you normally use?
- 2 would you enjoy participating in the most?

3 **AVL5** Look at the infographic on page 55. Then listen again and match the conversations with the three turn-taking styles.

4 Work in pairs. Discuss the questions.

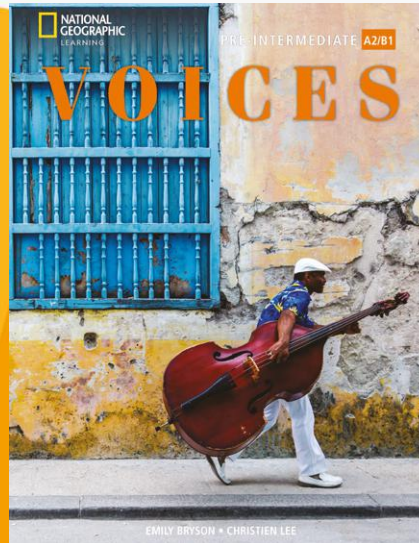
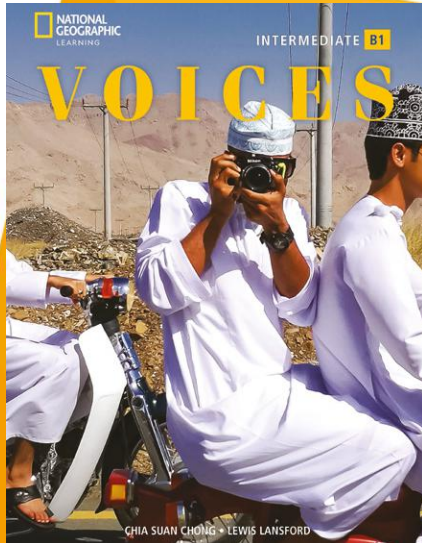
- 1 What do you know about the sports in the infographic?
- 2 How are the three turn-taking styles similar to bowling, basketball and rugby?
- 3 Which style is the most similar to your own?
- 4 Does your style sometimes change, depending on the situation?

54

PROUD USERS OF

 **NATIONAL
GEOGRAPHIC**
LEARNING

We're proud to be using the Voices series from National Geographic Learning in our programs. National Geographic Learning aim to bring the world into the classroom and the classroom to life. With Voices, learners use English as a tool for global communication and are encouraged to celebrate connections among people from a wide range of cultures and backgrounds. Carefully sequenced activities featuring real world content fully prepare learners for interaction and guide them to develop their voice in English. With awe-inspiring photography and National Geographic explorers, the series will inspire, motivate and engage students.





ISE

**The International
School of English**



@ISEIreland



@iseireland

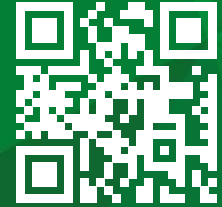


@LearnEnglish_IE



ELE IRELAND
English Language Education

www.ele-ireland.ie



**SCAN HERE TO
LEARN MORE**

ACADEMIC LEARNER PROTECTION POLICY

Approved by ILEP (Interim list of eligible programmes) and in effect since 17th September 2021

It is a requirement of ILEP for recruitment of International students onto English language courses of 25 weeks and over in duration that the schools have an approved protection for enrolled learners (PEL) scheme in place. Working closely with the Department of Justice, ELE Ireland (English Language Education Ireland) has developed and received approval from ILEP for the ELE Ireland Academic Learner Protection Scheme.

The ELE Ireland Academic Learner Protection Scheme is robust, fit for purpose and is currently FREE.

One of the key benefits of the scheme is that it has been developed specifically so as not to disadvantage students in any way or to add additional financial costs to the study experience. Students enrolled in any of the ELE Ireland member schools have access to this academic protection, which ensures that their course of study can be completed in the unlikely event of a PEL event happening in one of the member schools. Should such a PEL event occur, the ELE Ireland PEL Scheme covers the period from when a student begins their programme to the time the student has completed the programme, and the end-of-programme exams.



ELE IRELAND
Student Protection
Scheme

ELE IRELAND
Escrow
Learner
Protection



English Language Education Ireland
CLG. Registered in Ireland N° 706245

Registered Office:
GCI House, Salthill, Galway, H91 CDW4, Ireland



SPEAK A
NEW LANGUAGE
MAKE UNFORGETTABLE
Memories!





The International School of English



 **Dublin Campus 1**
26 Harcourt Street,
Dublin 2, Ireland

 **Dublin Campus 2**
66, Lower Camden St,
Dublin 2, Ireland

 **Waterford Campus 3**
54/55 Tycor Business Park,
Tycor, Waterford, Ireland

 +353 1 621 9039

 info@iseireland.ie
 www.iseireland.ie

 waterford@iseireland.ie
 waterford.iseireland.ie



PROUD USERS OF



We prepare for



Erasmus+

Recognized by ACELS, a service of
Quality and Qualifications Ireland,
for English language teaching (ELT)