



JOHNS HOPKINS
UNIVERSITY

JANUARY 14-21, 2025

with optional
Mashpi Lodge Pre-Tour and
Machu Picchu Post-Tour

THE GALAPAGOS ISLANDS

Orbridge



Dear Alumni and Friends,

Imagine stepping onto the pristine shores of the enchanting Galapagos Islands, where each day offers a transformative experience. As you embark on numerous shore landings and various water excursions, you'll have the opportunity to experience the Galapagos' unique ecosystem up close, finding yourself surrounded by endemic wildlife in their natural habitat. The thrill of encountering blue-footed boobies, giant tortoises and the Galapagos penguin is unparalleled.

Snorkel through crystal-clear waters alongside playful sea lions, kaleidoscopes of colorful fish and graceful sea turtles. This is a unique chance to become part of their underwater world, a privilege granted to only a fortunate few.

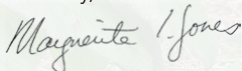
As you venture into secluded inlets and stroll along sweeping white sand beaches, you'll feel a deep connection with the remarkable places that have captured the imaginations of explorers and naturalists for centuries.

Your expedition vessel for this voyage is the nimble, 40-guest *Isabela II*, designed to provide the ultimate in comfort and adventure. Relax on the spacious sun deck while admiring the panoramic landscape, take a dip in the hot tub, or re-energize with a workout in the fitness room.

This is a peak-season sailing for university and college alumni association travelers. With significant savings of more than \$1,000 per couple, we anticipate this program will fill quickly.

To reserve, visit jhu.orbridge.com, call (866) 639-0079 or return the attached reservation form.

Sincerely,



Marguerite Jones, A&S '74, Bus '88

Travel Program Director

Office of Alumni Relations

The Johns Hopkins University

One member of the traveling party is required to make a sustaining financial contribution of \$50 to the Johns Hopkins Alumni Association within the fiscal year. Please visit www.alumni.jhu.edu/support. NOTE: A small portion of the cost of your trip supports the Johns Hopkins Alumni Travel Program.

For Johns Hopkins related questions, please call (800) 548-5481 or email alumni@jhu.edu.



Itinerary and Highlights (subject to change)

Day 1: **EN ROUTE FROM U.S. | ARRIVE IN QUITO, ECUADOR** After an evening arrival transfer to your five-star hotel—the only Relais & Châteaux property in Quito—for a restful night's sleep.
Overnight: Casa Gangotena

Day 2: **QUITO** During a full-day guided tour, explore historic Old Town, the San Francisco Market, La Compañía de Jesús and the Casa del Alabado Archaeological Museum. Gather for a welcome reception this evening.
Overnight: Casa Gangotena (B,L,R)

Day 3: **QUITO | FLIGHT TO BALTRA | SANTA CRUZ: HIGHLANDS | PUERTO AYORA – EMBARKATION** After breakfast take the approximate two-hour flight to Baltra Airport. Transfer to the Baltra Ferry Terminal to ferry to Santa Cruz Island for lunch. Afterward encounter the magnificent Galapagos giant tortoise at the Charles Darwin Research Station. In the late afternoon arrive to your expedition vessel, *Isabela II*.
Overnight: *Isabela II* (B,L,D)

Day 4: **BARTOLOMÉ | SANTIAGO: SULLIVAN BAY** Take a half-mile staircase climb to the summit for expansive views. Back at the beach enjoy time to snorkel. Cruise around Pinnacle Rock to see Galapagos penguins and playful sea lions. At Sullivan Bay walk through extensive lava flows, and photograph the unique geological formations.
Overnight: *Isabela II* (B,L,D)

Day 5: **SANTA CRUZ: DRAGON HILL | SANTIAGO: BUCCANEER COVE** Dragon Hill offers a beautiful view of the bay and the western islands of the archipelago. Enjoy leisure time to stroll the shoreline, or snorkel with hopes of spotting rays and green turtles. Cruise the coastline beside the impressive cliffs of Buccaneer Cove.
Overnight: *Isabela II* (B,L,D)

Day 6: **ISABELA: PUNTA VICENTE ROCA | FERNANDINA: PUNTA ESPINOZA** Explore the coast looking for colonies of Galapagos fur seals, Nazca boobies, flightless cormorants, penguins and marine iguanas. At Punta Espinoza spot for hawks, penguins, marine iguanas and the famous flightless cormorant.
Overnight: *Isabela II* (B,L,D)

Day 7: **BALTRA – DISEMBARKATION | FLIGHT TO QUITO, ECUADOR** Guests who are not joining the Machu Picchu Post-Tour will stay the night in Quito. Guests joining the Machu Picchu Post-Tour will take an evening flight from Quito to Lima, Peru.
Overnight: Wyndham Quito Airport OR Wyndham Costa del Sol Airport (B,L)

Day 8: **QUITO | DEPART FOR U.S.** After breakfast, transfer to the airport for flights home. (B)



What's Included

- 2 nights at 5-star Casa Gangotena in Quito (or similar) prior to embarkation
- 4 nights aboard the *Isabela II* featuring exploration by panga and glass-bottom boat, naturalist-led hikes and excursions, and evening lectures
- 1 night at Wyndham Quito Airport (or similar) after disembarkation
- 7 breakfasts, 6 lunches and 4 dinners plus a special welcome reception in Quito
- A guided city tour of Quito
- All excursions and presentations
- Complimentary use of shorty wetsuits, snorkeling equipment and ocean kayaks
- Galapagos National Park entrance fee and transit card
- Internal round-trip airfare between Quito and the islands as noted in the itinerary
- Gratuities to local guides, hotel porters and drivers in Quito
- Airport transfers for guests arriving and departing during the suggested times

Activity Level: Guests should be sure-footed on stairs and able to walk at least one mile on rocky, volcanic and uneven ground. Some optional nature hikes will be on irregular and steep terrain. Guests should also be comfortable managing wet beach landings and boarding small vessels. Maximum elevation: 9,350 feet in Quito

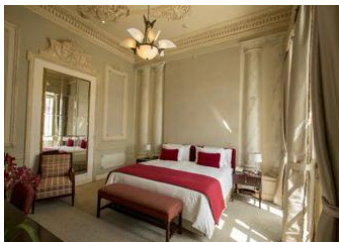
(B = Breakfast, L = Lunch, D = Dinner, R = Reception)



Hotel Accommodations *(subject to change)*

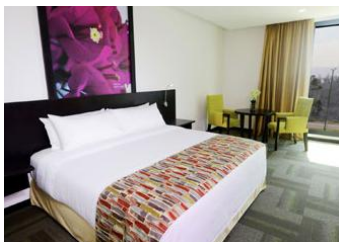
CASA GANGOTENA – QUITO

Before embarkation, stay at five-star Casa Gangotena. Located across from Plaza San Francisco in the heart of Quito's Spanish Colonial Old Town, the hotel offers easy access to the rich culture, tradition and charm of the city's historic center.



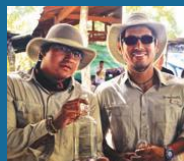
WYNDHAM QUITO AIRPORT HOTEL

Conveniently located near the Mariscal Sucre International Airport, the Wyndham Quito Airport Hotel offers comfortable and convenient accommodations for the last night of the program.



Your Expedition Leader

Viewing the Galapagos Islands alongside an Orbridge Expedition Leader is a special experience. While observing wildlife, they will offer expert descriptions of methods of survival and behaviors. Together on panga rides, nature walks, and aboard the *Isabela II*, you will gain understanding of the endangered species who inhabit the waters and land of the archipelago.



Orbridge

Onboard *Isabela II*

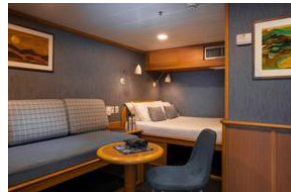
Accommodating only 40 guests, the 183-foot *Isabela II* was designed to provide the ultimate in comfort and adventure while cruising the Galapagos Islands. Guests can savor fresh, delicious international and Ecuadorian cuisine at every meal. Enjoy the spacious public decks, dining room, lounge, library, hot tub and fitness room.



Standard
Full-size bed, window, private bathroom with shower.
128 sq. ft.



Classic Twin
Two twin beds, view window, private bathroom with shower.
139 sq. ft.



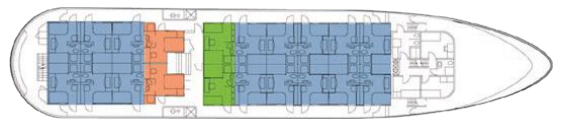
Classic Double
Full-size bed, view window, daybed, private bathroom with shower.
139 sq. ft.



Premium Suite
Queen bed, view window, wardrobe, private bathroom with shower.
170 sq. ft.



Main deck



Cabin deck



Optional Pre-Tour Mashpi Lodge

Immerse yourself in the unparalleled natural beauty and exclusivity of Mashpi Lodge. Delve into the ecological wonders of the rainforest through interactive workshops, enriching nature activities and expert-led discussions that provide valuable insights into the region's unique flora and fauna.

Day +1: ARRIVE IN QUITO, ECUADOR Transfer to your five-star hotel to refresh for tomorrow's full day of activities.

Overnight: Casa Gangotena

Day +2: MASHPI LODGE | MASHPI RESERVE After breakfast, journey 3.5 hours, arriving at award-winning Mashpi Lodge. Settle into your elegantly appointed room, featuring locally-inspired décor. Floor-to-ceiling windows offer breathtaking views of the surrounding greenery, creating an enchanting ambiance amidst the tranquility of your room. Enjoy lunch, then choose from several optional activities. Take a guided hike to one of several waterfalls or follow the Howler Monkey Trail to the Life Centre, which provides extensive information about the rainforest's incredible biodiversity. Return to the lodge to rejuvenate among the property's five-star amenities. Take a leisurely dip in the open-air rooftop hot tub, or visit the spa for a luxurious treatment (*additional fee applies*) complemented by the soothing sounds of the rainforest.

Overnight: Mashpi Lodge (B,L,D)

Day +3: MASHPI LODGE | MASHPI FOREST CANOPY EXPLORATION Today get a birds-eye view of the Mashpi Forest canopy during a guided ride aboard the *Dragonfly*—an aerial cable car. Go for the entire two-hour ride, or combine the *Dragonfly* experience with a guided nature or waterfall hike. This evening, join fellow travel companions to hear a collection of lectures by a resident biologist or naturalist.

Overnight: Mashpi Lodge (B,L,D)

Day +4: MASHPI | QUITO | MAIN PROGRAM BEGINS After breakfast and final activities at the lodge, take a group transfer to Quito for lunch before joining the group for the main program. (B,L)

What's Included

- 1 night at Casa Gangotena in Quito
- 2 nights at award-winning Mashpi Lodge
- 3 breakfasts, 3 lunches and 2 dinners (soft drinks available at all meals)
- Entrance to Mashpi Reserve
- *Dragonfly* aerial tram experience
- Full guiding services including interpretation on all activities and experiences within the reserve
- Specialized lectures and field presentations on research conducted in the reserve by local experts
- Use of rain gear (waterproof poncho, rubber boots), walking sticks, spotting scopes and binoculars
- All transportation for excursions using vehicle transport in the reserve
- All gratuities and portorage
- Airport transfers for guests arriving during the suggested times
- Round-trip group transportation between Quito and Mashpi Lodge



Optional Post-Tour Machu Picchu

Travel to the mist-shrouded mountain citadel of the Incas. Explore the famous city of Cusco and the Sacred Valley of the Incas. Ride the train through the Urubamba Valley, and break bread in the home of a local Peruvian family outside of Cusco.

Day 8: FLIGHT TO CUSCO, PERU | SACRED VALLEY Meet your guide and transfer to the Sacred Valley for a late lunch followed by a guided tour of the Yucay Museum of Living Culture. Arrive to your hotel to relax before dinner on your own.
Overnight: Sonesta Posadas del Inca – Yucay (B,L)

Day 9: SACRED VALLEY | MACHU PICCHU See the massive fortress at Ollantaytambo where the Inca won their greatest victory against the conquistadores. Board the *Vistadome* train to Aguas Calientes. Have lunch at Machu Picchu Sanctuary Lodge, followed by guided exploration of the ruins.
Overnight: Inkaterra Machu Picchu Pueblo Hotel (B,L,D)

Day 10: MACHU PICCHU | SACRED VALLEY | CUSCO Experience a quiet morning at Machu Picchu with exploration from the upper citadel, then begin the return to Cusco.
Overnight: Aranwa Cusco Boutique Hotel (B)

Day 11: CUSCO | SACSAYHUAMAN | KENKO | VILLA TIPON | CUSCO Visit San Pedro market and Qorikancha (Temple of the Sun). Continue to Sacsayhuaman and the Kenko archaeological sites. Enjoy lunch at a private home and hear an informative discussion about modern Peru. Witness a traditional Pachamama ceremony. The remainder of the afternoon and evening are at leisure.
Overnight: Aranwa Cusco Boutique Hotel (B,L)

Day 12: CUSCO Enjoy a full day to explore the city's museums, artisanal shops and central square. Gather for a special farewell dinner this evening.
Overnight: Aranwa Cusco Boutique Hotel (B,D)

Day 13: CUSCO | FLIGHT TO LIMA | DEPART FOR U.S. After breakfast transfer to the airport for an afternoon flight to Lima. A group suite is available while waiting for departing international flights home.
Group Suite: Wyndham Costa del Sol (B)

What's Included

- 5 nights premium accommodations and a group room on departure day
- 6 breakfasts, 3 lunches and 2 dinners
- Fully guided tours and field presentations from local experts
- All ground excursion transportation including the *Vistadome* train through the Urubamba Valley
- Luggage portorage
- Gratuities to guides, drivers and wait staff for included meals
- Airport assistance for guests arriving and departing during the suggested times



THE GALAPAGOS ISLANDS

JANUARY 14-21, 2025

Mashpi Lodge Pre-Tour: January 11-14, 2025

Machu Picchu Post-Tour: January 20-26, 2025

Reserve by Credit Card:

Online: jhu.orbridge.com

Phone: (866) 639-0079

Fax: (206) 452-5655

Reserve by Check:

Made payable to **Orbridge, LLC**

Mail to: Orbridge, P.O. Box 1376

Poulsbo, WA 98370

Stateroom Category	Standard Rate	Special Rate*
Standard	\$6,299	\$5,795
Classic Double	\$7,299	\$6,795
Classic Twin	\$7,499	\$6,995
Premium Suite	\$9,499	\$8,995
Single (Standard)	\$10,499	\$9,995

Mashpi Lodge Pre-Tour*

Double \$1,995 | Single \$2,895

Machu Picchu Post-Tour*

(Internal airfare to/from Cusco is an additional \$1,195 per person.)

Double \$3,995 | Double Deluxe \$4,695

Single \$5,995 | Single Deluxe \$6,795

Deluxe package includes room upgrades at

Sonesta Posada del Inca, Inkaterra Machu Picchu Pueblo Hotel and Aranwa Cusco Boutique Hotel. Availability limited.

Rates are per person based on double occupancy except where noted as Single, in U.S. dollars.

GUEST INFORMATION:

Guest #1 Name (Title/Salutation): _____

Email: _____ Class Year: _____

Home Phone: _____ Alt. Phone: _____

Address: _____

City: _____ State: _____ Zip: _____

Guest #2 Name (Title/Salutation): _____

Email: _____ Class Year: _____

Home Phone: _____ Alt. Phone: _____

DEPOSIT PAYMENT:

Check ACH (Automated Clearing House) MasterCard/Visa American Express Discover

Card #: _____ Exp. Date: _____ CVV: _____

Name (as printed on card): _____

Billing Address (if different from above): _____

City: _____ State: _____ Zip: _____

CATEGORY SELECTION & DEPOSIT:

Category Preference: 1st choice _____ 2nd choice _____

_____ guests joining pre-tour (\$500/person) +


_____ guests joining program (\$850/person) +

_____ guests joining post-tour (\$500/person) = **TOTAL DEPOSIT: \$** _____

Post-Tour Category (choose one): Double Deluxe Single

I/we have read, understand, and agree to the full Terms & Conditions at terms.orbridge.com; and I/we agree that Orbridge LLC is authorized to charge my credit card above and/or take my/our deposit for this program.

Signature: _____ Date: _____

 Orbridge takes seriously the responsibility to minimize our global environmental impact. Each year we plant 100,000 trees in U.S. State Forests with afforestation needs as an ongoing initiative among our evolving sustainability efforts. Learn more at orbridge.com/going-green.

*Special group rate; limited offer. Single availability limited. Internal airfare between the mainland and the Galapagos Islands is included; airfare otherwise not included. For the post-tour, airfare for internal flights to/from Cusco is \$1,195 (subject to change) per person. **A complement to the educational component of this journey, Expedition Libraries are curated collections of useful resources and background reading tailored to this program. Place your deposit on or before the specified date, and one Expedition Library per room will be sent after receipt of final payment. Libraries may be purchased; please call for details.



THE GALAPAGOS ISLANDS

FREE EXPEDITION LIBRARY
AN EXCLUSIVE EARLY
RESERVATION BONUS

JANUARY 14-21, 2025

Development and Alumni Relations
3400 N. Charles St.
Baltimore, MD 21218

Reserve by
August 23, 2024**

Special Alumni Rate:
Save more than \$1,000 per couple

30-DAY REFUND GUARANTEE

The University is not the Tour Operator.

The University is not responsible for the itinerary, flight times, hotel or transportation arrangements, or any other aspects of this tour.

The University and the Tour Operator act only as agent for the participants with respect to travel services, and they shall not be responsible for changes of flight times, fare changes, dishonor of airline, hotel or other reservations, injury, damage, loss of baggage, accidents or for the acts or defaults of any person or entity engaged in conveying participants or in carrying out other arrangements of the tour. Further, the University and Tour Operator shall not be responsible for losses or additional expenses of the participant due to sickness, weather, strike, civil unrest, acts of terrorism, quarantine, acts of God, or other causes beyond its control.

The University and Tour Operator shall not be responsible for alteration in the itinerary as deemed necessary for carrying out the tour and the right is reserved to substitute hotels of similar quality. The University and the Tour Operator reserve the right to cancel any tour prior to departure; in which case the entire payment may be refunded without further obligation on its part. The University and the Tour Operator reserve the right to decline to accept or to retain any person as a member of the tour should such person's health, actions or general deportment impede the operation of the tour or the rights or welfare of the other participants. No refund will be made for the unused portion of any tour.

Applicants for participation in this tour accept in full all of the conditions set forth above.

PRSRT STD
U.S. POSTAGE
PAID
PERMIT NO. 825
SAN DIEGO, CA

