



PRINTER CATALOGUE 2026



Printers: Label / Barcode / Mobile / POS / Colour / Linerless

Honeywell

 **ZEBRA**

CITIZEN

TSC

TOSHIBA

 **DATALOGIC**

EPSON



www.supplylineid.com

CONTENTS

DESKTOP

Brother	<u>P6</u>
Citizen	<u>P7</u>
Honeywell	<u>P9</u>
Toshiba	<u>P11</u>
TSC	<u>P12</u>
Zebra	<u>P15</u>

INDUSTRIAL

Brother	<u>P20</u>
Citizen	<u>P21</u>
Honeywell	<u>P25</u>
Toshiba	<u>P28</u>
TSC	<u>P31</u>
Zebra	<u>P35</u>

LINERLESS

Epson	<u>P37</u>
Honeywell	<u>P38</u>
Star	<u>P39</u>
Toshiba	<u>P41</u>
TSC	<u>P42</u>
Zebra	<u>P44</u>

MOBILE

Citizen	<u>P47</u>
Epson	<u>P48</u>
Honeywell	<u>P49</u>
Star	<u>P51</u>
Toshiba	<u>P54</u>
TSC	<u>P55</u>
Zebra	<u>P58</u>

RFID

Toshiba	<u>P61</u>
TSC	<u>P62</u>
Zebra	<u>P63</u>

CONTENTS

EPOS

Citizen	P65
Epson	P71
Star	P74

HEALTHCARE

TSC	P77
Zebra	P79

COLOUR

Primera	P82
Toshiba	P82
Epson	P83
TSC	P83

LABELS



[P84](#)

RIBBONS

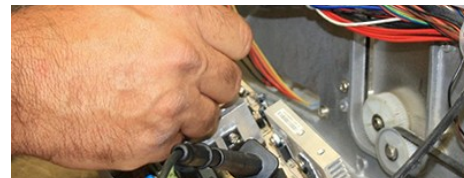


[P85](#)

TOSHIBA

[P86](#)

SERVICES



[P87](#)

BARTENDER



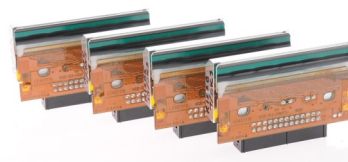
[P88](#)

REWIND UNITS



[P90](#)

PRINTHEADS



[P92](#)

Welcome to the SupplylineID 2026 Printers catalogue

Think Print, Think Mobile, Think POS, Think Supplyline

We supply a huge range of printers and accessories. This catalogue not only covers our whole range of printers from the leading manufacturers like Zebra, Honeywell, Epson and Toshiba.

It also gives you live pricing, specs, accessories and availability, just find the make and model you want and click the link or picture in the catalogue, this will take you to the exact pricing for that model on our website which will also include all model types, spec sheets, videos and accessories.



TRANSPORTATION

Transportation and Logistics Deliver non-stop service from the first mile to the last

- Shipping and receiving labels
- Order picking
- Baggage tags
- Cross-docking labels
- Mobile proof of delivery receipts
- RFID pallet tagging

Manufacturing Ratchet up productivity from the plant floor to the front door

- Work in progress (WIP) labelling
- Compliance labelling
- Product ID and serial labelling
- RFID tagging for asset tracking
- Inventory management labelling
- Quality assurance labelling



MANUFACTURING

Retail and Hospitality Give customers an experience that keeps them coming back

- Shelf edge label printing
- Price markdown labels
- Receipt printing
- Mobile point of sale (MPOS) receipts
- Inventory tagging
- Return labels generation



RETAIL

Warehouse Connect each operational area in your warehouse to give you the agility to realize transformational gains

- Pallet labelling
- Picking and packing labels
- Bin and shelf labels
- Inbound and outbound logistics
- RFID tracking
- Inventory audits



WAREHOUSE

Healthcare Strengthen patient safety from admissions to discharge

- Patient wristbands
- Specimen and Laboratory labels
- Medication labelling (BCMA)
- Prescription labels
- Asset tracking
- ID badge printing



HEALTHCARE

Hospitality Improve services with fast, accurate printing that's secure

- Event ticket, badge and wristband printing
- Guest check-in credentials
- Food safety and expiration labelling
- Mobile point-of-service receipts
- Luggage tags (for hotel/resorts logistics)



HOSPITALITY



SUPPLYLINE PRINTER GUIDE

Not sure what printer you need, use this guide to help choose the right printer type for you.

Considerations: How many labels do you print a day? What type of environment are they used in? What Software needs do you require? Do you want USB, Bluetooth, Wireless or Ethernet?

DESKTOP PRINTERS

- ◆ Low profile & Compact ABS Plastic Build
- ◆ Print speeds up to **5" P/Sec**
- ◆ **500-1000** Labels Per Day
- ◆ Usual roll spec 25mm Core with 4" or 5" Max OD

MID-RANGE PRINTERS

- ◆ Mid-Sized Build with Mix of Metal & Plastic Materials
- ◆ Print speeds up to 8" P/Sec
- ◆ 1000-2000 Labels Per Day
- ◆ Usual roll spec 44/76mm Core with 6" Max OD

PORTABLE PRINTERS

- ◆ Small Size, Lightweight ABS Plastic, Easy to Use
- ◆ Can be belt or warehouse vehicle mounted
Print speeds up to **4" P/Sec**
- ◆ **500-1000** Labels Per Day
- ◆ Usual roll spec 12.5/19mm Core with 3" Max OD

INDUSTRIAL PRINTERS

- ◆ Large & Heavy Duty, Dust Resistant Metal Frame
- ◆ Print speeds up to **14" P/Sec**
- ◆ **2000-10,000** Labels Per Day
- ◆ Usual roll spec 44/76mm Core with 8" Max OD

LINERLESS PRINTERS

- ◆ Up to 50% more labels per roll means fewer roll changes
- ◆ Increased efficiency
- ◆ No need for peeling labels
- ◆ No disposing of the backing liner
- ◆ Fewer boxers of labels to transport and store
- ◆ Reduced slip hazards from liner piles beneath printer
- ◆ Firmware – includes a rollback feature on mobile printers to unstick media

COLOUR PRINTERS

- ◆ High-quality, full-colour, on-demand labels
- ◆ Reduce inventory costs for pre-printed labels
- ◆ Customise packaging instantly, and enhance branding
- ◆ Unique labels in-house, improving efficiency and supporting compliance for hazardous materials.
- ◆ Main uses include: food/beverage packaging, cosmetics, CBD/dietary supplements, chemical labelling (BS5609 certified), and asset tracking

[BACK TO CONTENTS](#)

DESKTOP PRINTERS

brother
at your side

ABOUT BROTHER

Labels are the foundation of any efficient warehouse or logistics operation—but managing printers shouldn't slow you down.

That's where Brother Business Labelling Solutions excels. With more than 35 years of proven printing expertise, Brother delivers dependable, high-performance labelling systems that minimise downtime, simplify inventory management, and enable teams to locate stock quickly and accurately.

Whether you're expanding your operation or looking for a reliable, low-maintenance way to stay organised, Brother's solutions are designed to scale with your business.

Built on a legacy of innovation and customisation, Brother Business Labelling Solutions help keep your warehouse running smoothly—so you can focus on what matters most.

TD-2350 D Series



**HIGH SPEED PRINTING.
COMPACT AND EASY TO USE**

[View printer prices](#)

Printing Technology	Direct Thermal
Resolution	203 & 300 dpi (dependant)
Size (WxDxH)	Dependant on variant
Print Speed (Max)	Up to 6 ips

Increasing productivity and reducing costs are priorities in any workplace. And when it comes to label printing, the TD-2D printers combine proven desktop printer performance with new levels of efficiency to help you do more for less.

[Specification sheet](#)

TD Series TT/DT

**PRINT HIGH QUALITY LABELS
ON DEMAND**



[View printer prices](#)

Printing Technology	Thermal Transfer / Direct Thermal
Resolution	203 & 300 dpi
Size (WxDxH)	Dependant on variant
Weight	2.5—3kg (dependant)

The Brother TD series range professional thermal printers allows you to print high quality labels on demand. It supports printing labels up to 4 inches in width. Using direct thermal and thermal transfer print technology, they fit the requirements of a large range of market applications.

[Specification sheet](#)

TD Series DT

**IMPROVE EFFICIENCY AND
REDUCE HUMAN ERROR**



[View printer prices](#)

Printing Technology	Direct Thermal
Resolution	203 dpi
Size (WxDxH)	180 x 281 x 155 mm
Print Speed (Max)	Up to 8 ips

The TJ6 Industrial Label Printer series has been designed to ensure minimal downtime and maximum productivity through fast print speeds, large ribbon capacity and in-built durability, making it perfect for tough production environments.

[Specification sheet](#)

[BACK TO CONTENTS](#)

CITIZEN

ABOUT CITIZEN

Citizen desktop printers combine performance with reliability to deliver hundreds of labels every day. These compact units are also designed to offer easy media loading, simple set-up and cost-effective printing processes.

- Cross-Emulation™ enables automatic recognition of ZPL® and Datamax®
- ZPL2®, Datamax® and EPL2® emulations
- Anti Ribbon Crasing Technology
- Internal Power Supply
- Easy media loading

CL-E331

THE CONTEMPORARY HIGH RESOLUTION LABEL PRINTER



[View printer prices](#)

[View accessory prices](#)

Printing Technology	Thermal Transfer / Direct Thermal
Resolution	300 dpi
Size (WxDxH)	178 x 266 x 173 mm
Print Speed (Max)	6 inches per second

The CL-E331 is capable of printing onto even the smallest of labels, from small part labels to detailed test tube labels. It's perfect for use in a variety of settings in healthcare, manufacturing and retail environments, where intelligibility is paramount to adhering to safety standards and efficiency targets

[Specification sheet](#)

CT-E651L

TWO-IN-ONE LABEL AND RECEIPT PRINTING



[View printer prices](#)

Printing Technology	Direct Thermal
Resolution	203 dpi
Size (WxDxH)	125 x 170 x 108 mm
Print Speed (Max)	300 mm/sec

Quick and convenient, the front-exit CT-E651L label-capable POS printer is perfect for pharmacy, retail and hospitality environments. Supporting both label and receipt printing up to 200mm and 300mm per second in respective modes, the CT-E651L is the perfect solution for applications where printers need to be multifunctional.

[Specification sheet](#)

CL-S521ii

PACKED WITH FEATURES FOR INDUSTRIAL DESKTOP PRINTING



[View printer prices](#)

[View accessory prices](#)

Printing Technology	Direct Thermal
Resolution	203 dpi
Size (WxDxH)	231 x 289 x 183 mm
Print Speed (Max)	6 inches per second

The CL-S521II offers a reliable, easily integrated industrial desktop printing solution. These units are supplied as standard with on-board ZPL® and Datamax® emulations plus BASIC Interpreter programming support, offering maximum flexibility and easy compatibility with other applications.

[Specification sheet](#)

CL-E720

COST-EFFECTIVE TABLE TOP PRINTING



[View printer prices](#)

[View accessory prices](#)

Printing Technology	Thermal Transfer / Direct Thermal
Resolution	203 dpi
Size (WxDxH)	250 x 458 x 261 mm
Print Speed (Max)	8 inches per second

The CL-E720 table top printer is packed with features usually reserved for higher class machines. Designed and built for easy operation and service, it includes the proven Citizen ARCP™ mechanism, which guarantees sharp, high quality print results.

[Specification sheet](#)

CL-E321

DESIGNED AND BUILT FOR PERFORMANCE



[View printer prices](#)

[View accessory prices](#)

Printing Technology	Thermal Transfer / Direct Thermal
Resolution	203 dpi
178	178 x 266 x 173 mm
Print Speed (Max)	8 inches per second

The Citizen CL-E321 combines a unique and stylish design with outstanding performance and reliability, all in a compact, easy to use package. Designed for quick media and ribbon changes, the CL-E321 is equipped with wide 90 degree Hi-Lift™ opening mechanism, full connectivity and printer emulations.

[Specification sheet](#)

[Labels & Ribbons](#)

CL-E300

COMPACT AND FULLY FEATURED PRINTING



[View printer prices](#)

[View accessory prices](#)

Printing Technology	Direct Thermal
Resolution	203 dpi
Size (WxDxH)	170 x 208 x 152 mm
Print Speed (Max)	8 inches per second

The CL-S631II offers the finest resolution, providing 300 dpi for the reproduction of logos, pictures and EAN-compliant barcodes. It has a robust all-metal mechanism and easy media loading functionality

[Specification sheet](#)

[Labels & Ribbons](#)

CL-S621ii

THE DESKTOP PRINTER THAT MAKES LIFE EASY



[View printer prices](#)

[View accessory prices](#)

Printing Technology	Direct Thermal / Thermal Transfer
Resolution	203 dpi
Size (WxDxH)	231 x 289 x 270 mm
Print Speed (Max)	6 inches per second

Precision engineered, fast and easy-to-use unit including all the capabilities of the CL-S521II plus the option to print in both direct thermal and thermal transfer modes. The printer also features Citizen's Hi-Lift™ metal mechanism and the ARCP™ anti-wrinkle and automatic tensioning system.

[Specification sheet](#)

[BACK TO CONTENTS](#)

ABOUT HONEYWELL

The clear choice for a wide variety of light-duty label, ticket, and tag printing applications.

Honeywell label, ticket and tag desktop barcode printers cover every type of application, from economical low-volume needs to rugged, industrial-strength printing and applications.

- The PC45D 4-inch direct thermal printer offers a large touchscreen, enterprise-level ruggedness, and optimized low label and low ribbon warning workflows to predict and reduce downtime.
- Equipped with high-performance print heads offering resolution options of 203 dpi or 300 dpi, the PC42E-T delivers fast and stable high-quality printing with a maximum speed of 6 inches per second.
- Get connected and stay connected with Wi-Fi 5 and Bluetooth® 5.1 LE for continuous productivity. WLAN connectivity for fast data capture allowing for accelerated deployments.
- Smart Parse technology gives you the ability to resize objects, barcodes, or font type without any need to get in on the PC45D's backend system. Whether on a local server or cloud network, the PC45D supports variable network protocols and multiple print languages.
- The Honeywell Printer Edge™ platform provides a centralized management system for your printer network.
- Printer Edge enables real-time visibility, automated software updates, and enhanced security, especially for those businesses that don't have time for downtime.
- Printer Edge helps to streamline workflows making it easier for you to manage costs.

PC45D

**COMPACT TO TACKLE CHANGING
WORK ENVIRONMENTS**



[View printer prices](#)

Printing Technology	Direct Thermal
Resolution	203 & 300 dpi
Size (LxWxH)	168 x 181.3 x 215.6 mm
Print Speed (Max)	8 inches per second

The PC45D 4-inch direct thermal printer offers a large touchscreen, enterprise-level ruggedness, and optimized low label and low ribbon warning workflows to predict and reduce downtime. Get connected and stay connected with Wi-Fi 5 and Bluetooth® 5.1 LE for continuous productivity.

[Specification sheet](#)

PC45T

**POWERFUL , FLEXIBLE AND
RELIABLE**



[View printer prices](#)

Printing Technology	Thermal Transfer
Resolution	203 & 300 dpi
Size (LxWxH)	179.6 x 212.9 x 285.5 mm
Print Speed (Max)	8 inches per second

The PC45T 4-inch direct thermal printer offers a large touchscreen, enterprise-level ruggedness, and optimized low-label and low-ribbon warning workflows to predict and reduce downtime. Designed with flexibility in mind, allowing businesses to change between thermal transfer and direct thermal media easily.

[Specification sheet](#)

[BACK TO CONTENTS](#)

DESKTOP PRINTERS

Honeywell

PC42E-T

**COMPACT, HIGH-SPEED AND
HIGH-RESOLUTION**



[View printer prices](#)

Printing Technology	Direct Thermal
Resolution	203 / 300 dpi
Size (LxWxH)	268 x 198 x 168 mm
Print Speed (Max)	203 dpi 1 > 5 ips / 300 dpi 1 > 6 ips

The PC42E-T desktop printer is compact, reliable, and user-friendly, providing efficient printing performance, easy manageability, and maintenance. With its array of intelligent features and user-friendly design, the PC42E-T is well-suited for various industries such as retail, transportation, and logistics, as well as light manufacturing and warehousing.

[Specification sheet](#)

PC23D

**INNOVATIVE DESIGNS GUIDED
BY CUSTOMER INPUT**



[View printer prices](#)

[View accessory prices](#)

Printing Technology	Direct Thermal
Resolution	203 & 300 dpi
Size (WxDxH)	125 x 215 x 177 mm
Print Speed (Max)	5 inches per second

Designed for user-friendliness and flexibility, compact PC Series desktop printers provide an intuitive label printing solution. PC Series printers are perfect for space-constrained settings. Their low cost and fast operation make them the smart choice for light-duty labeling applications where users need reliable, easy-to-use printers.

[Specification sheet](#)

[Labels & Ribbons](#)

Honeywell

For all your Desktop Printer needs



DESKTOP PRINTERS

TOSHIBA

BV-400D Series

TOSHIBA'S MOST ADVANCED
DESKTOP PRINT TECHNOLOGY



[View printer prices](#)

Printing Technology	Direct Thermal
Resolution	203 dpi / 300 dpi
Size (WxDxH)	174 x 218 x 173 mm
Print Speed (Max)	7 IPS / 5 IPS

Coming with a new powerful and scalable system architecture the BV420D models are future-proove. With a broad set of standard interfaces and optional Wi-Fi and/or Bluetooth, the BV420D easily integrates into even the most complex IT environments.

[Specification sheet](#)

BV-400T Series

THE LATEST PRINT TECHNOLOGY
IN A SLEEK CASE



[View printer prices](#)

Printing Technology	Thermal Transfer
Resolution	203 dpi / 300 dpi
Size (WxDxH)	200 x 267 x 198.3 mm
Print Speed (Max)	7 IPS / 5 IPS

Coming with a new powerful and scalable system architecture the BV420T models are future-proove. With its ergonomic style and sleek casing these printers suit retail shops, offices or any type of workplace where space is at a premium. The BV420T thermal transfer printers support a wide range of ribbons from wax to resin.

[Specification sheet](#)

TOSHIBA



The BV400D series. Outstanding design meets ultimate performance.

ABOUT TSC

We manufacture one of the largest selections of desktop printers on the market. Designed to the highest quality standards, our desktop printers are also budget-friendly and customizable to adapt to a wide variety of industries and applications.

Our desktop printers come standard with premium features like high-resolution, RFID, and remote printer management.

Seamless Integration, Effortless Deployment

- Out-of-the-box auto-switch print language emulation
- User-friendly and convenient label printing with TSC Standalone Creator and TSCPRTGo

Minimising Downtime, Maximising Uptime

- Real-time remote printer monitoring and management with the Internal Embedded Webpage, virtual control panel, TSC Console, and SOTI Connect
- Downtime prevention with self-diagnostic TPH Care, TPH (thermal printhead) maintenance, and ribbon low warning
- User-friendly design: self-diagnostics, toolless TPH and platen roller replacement for easy maintenance, and shortcut buttons for enhanced efficiency
- Supports network security configurations: HTTPS, SNMPv3, 802.1X, and TCP/IP Port 9100 filter

Versatile, Future-Proof Print Quality

- 15mm to 120mm wide media width for diverse media types, optional narrow media adaptors support the narrow label width to 10mm
- Addable future-proof upgrades: Wi-Fi, Bluetooth, cutter module, peeler module, care label cutter kit, linerless tear-off kit, and linerless cutter kit

Environmentally Sustainable Printer

- 100% recyclable packaging with FSC-compliant cartons
- 100% recyclable plastic printer casing made with 30% recycled plastic
- 90%+ of printer components are recyclable





TE Series

**VERSATILE AND EASY-TO-USE
ENTRY-LEVEL PRINTER**



[View printer prices](#)

[View accessory prices](#)

Printing Technology	Direct Thermal / Thermal Transfer
Resolution	203 dpi
Size (WxDxH)	204 x 280 x 164 mm
Print Speed (Max)	6 ips

The TE Series innovative design offers our resellers new opportunities to satisfy unique market applications. The print mechanism which normally resides within the printer may be purchased separately for those looking to integrate custom label printing capability into their own manufactured designs.

[Specification sheet](#)

TH DH Series 2"

**THE HANDY WAY TO CONQUER
LABEL PRINTING CHALLENGES**



[View printer prices](#)

Printing Technology	Direct Thermal / Thermal Transfer
Resolution	203 dpi / 300 DPI
Size (WxHxD)	146 x 179 x 231 mm
Print Speed (Max)	8 ips (203) / 6 ips (300)

The TH DH Series Desktop Barcode Printers are versatile and flexible for diverse printing requirements. This series' versatility enables printing a wide range of difficult labels, including thick, tiny, and long labels and certain types of vertical market labels

[Specification sheet](#)

TH DH Series 4"

**EASILY CONQUER LABEL
PRINTING CHALLENGES**



[View printer prices](#)

Printing Technology	Direct Thermal
Resolution	203 dpi / 300 dpi
Size (WxHxD)	138 x 172 x 210 mm
Print Speed (Max)	8 ips (203) / 6 ips (300)

The TH DH Series scales up applications with a wide media width, high-precision printing, and several addable future-proof options. This empowers businesses to adapt to changing requirements for present and future operations. The eco-friendly printer features 100% recyclable packaging and plastic printer casing.

[Specification sheet](#)

TDP-247 Series

**COMPACT DESIGN AND HIGH
PERFORMANCE ENGINE**



[View printer prices](#)

[View accessory prices](#)

Printing Technology	Direct Thermal
Resolution	203 dpi / 300 dpi
Size (WxDxH)	200 x 240 x 164 mm
Print Speed (Max)	7 IPS / 5 IPS

The TDP-247 series direct thermal label printer offers best-in-class speed and high-resolution capabilities, along with a rugged, reliable design that has become the hallmark of the TSC printer family.

[Specification sheet](#)

[Labels & Ribbons](#)

TE Series

**VERSATILE AND EASY-TO-USE
ENTRY-LEVEL PRINTER**



[View printer prices](#)

[View accessory prices](#)

Printing Technology	Direct Thermal / Thermal Transfer
Resolution	203 dpi
Size (WxDxH)	204 x 280 x 164 mm
Print Speed (Max)	6 ips

The TE Series innovative design offers our resellers new opportunities to satisfy unique market applications. The print mechanism which normally resides within the printer may be purchased separately for those looking to integrate custom label printing capability into their own manufactured designs.

[Specification sheet](#)

TH DH Series 2"

**THE HANDY WAY TO CONQUER
LABEL PRINTING CHALLENGES**



[View printer prices](#)

Printing Technology	Direct Thermal / Thermal Transfer
Resolution	203 dpi / 300 DPI
Size (WxHxD)	146 x 179 x 231 mm
Print Speed (Max)	8 ips (203) / 6 ips (300)

The TH DH Series Desktop Barcode Printers are versatile and flexible for diverse printing requirements. This series' versatility enables printing a wide range of difficult labels, including thick, tiny, and long labels and certain types of vertical market labels

[Specification sheet](#)

TDP-324W

**COMPACT DESIGN AND HIGH-
PERFORMANCE ENGINE**



[View printer prices](#)

[View accessory prices](#)

Printing Technology	Direct Thermal
Resolution	203 dpi
Size (WxDxH)	109 x 260 x 210 mm
Print Speed (Max)	6 ips

TDP-324W wristband label printers were specifically designed for patient identification and entertainment ticketing. Features a compact design with large capacity to hold a full 6.5-inch OD roll of wristbands.

[Specification sheet](#)

[Labels & Ribbons](#)

TDP-225 Series

**IDEAL FOR HEALTHCARE, RETAIL &
ASSET TAGGING APPLICATIONS**



[View printer prices](#)

[View accessory prices](#)

Printing Technology	Direct Thermal
Resolution	203 dpi
Size (WxDxH)	109 x 209 x 171 mm
Print Speed (Max)	6 ips

Built with TSC durability, reliability, and commitment to innovation, the 2-inch-format TDP-225 series direct thermal printer features a compact design and high-performance engine that make it ideal for many healthcare, retail and asset tagging labeling applications.

[Specification sheet](#)

[Labels & Ribbons](#)

[BACK TO CONTENTS](#)



ABOUT ZEBRA

Zebra desktop printers are compact, simple to operate and provide all the durability your business demands for low- to mid-volume printing. And with a printer for every price point, you don't have to sacrifice performance for savings. For all your barcode label, receipt, wristband and RFID applications, there's a Zebra desktop printer perfect for the job.

Key features

- Print Technology: Direct Thermal, Thermal Transfer Roll
- FREE Z-Designer Label & Barcode Software
- Print Speed: from 4 ips (102 mm/ P-Sec), to 8 ips (203 mm/P-Sec)
- Print Resolution: 203 dpi (8 dot/mm), 300 dpi (12 dot/mm)
- Flexible, advanced printing, fool-proof ribbon loading
- Healthcare Versions
- Connectivity: Wi-Fi 6 (802.11ax) with Bluetooth 5.3 (optional), Wi-Fi 5 (802.11ac) with Bluetooth 4.2 (optional), Bluetooth Low Energy, USB, Serial



ZD411T

**ADVANCED COMPACT PRINTERS
BUILT FOR ENDURING PERFORMANCE**



[View printer prices](#)

Printing Technology	Direct Thermal / Thermal Transfer
Resolution	203 di / 300 dpi
Size (WxDxH)	138.7 x 242.9 x 169.2 mm
Print Speed (Max)	6 ips / 4 ips

The ZD411t 2-inch thermal transfer desktop printer delivers the features, flexibility and security customers need for years to come. Featuring a new architecture and Zebra's exclusive Print DNA software suite allows easy setup, operation and maintenance.

[Specification sheet](#)

ZD220

**RELIABLE OPERATION, QUALITY
CONSTRUCTION, GREAT VALUE**



[View printer prices](#)

[View accessory prices](#)

Printing Technology	Direct Thermal
Resolution	203 dpi
Size (WxDxH)	176 x 220 x 151 mm
Print Speed (Max)	4 ips

The ZD220 Desktop Printer is designed for customers who will benefit from a lower price point and a modest feature set requiring minimal training—and who nevertheless appreciate the benefits of Zebra quality.

[Specification sheet](#)

[Labels & Ribbons](#)



ZD421T

**DELIVERS THE FEATURES,
FLEXIBILITY & RELIABILITY YOU NEED**



[View printer prices](#)

[View accessory prices](#)

Printing Technology	Thermal Transfer
Resolution	203 dpi / 300 dpi
Size (WxDxH)	202 x 267 x 189 mm
Print Speed (Max)	6 IPS / 4 IPS

Offering more functions and capabilities than the legacy GK Series and ZD420 Series and powered by a new innovative architecture that can run more tasks, perform more operations simultaneously and is ready for what's next.

[Specification sheet](#)

[Labels & Ribbons](#)

ZD421D

**ELEVATING YOUR
EXPECTATIONS**



[View printer prices](#)

[View accessory prices](#)

Printing Technology	Direct Thermal
Resolution	203 dpi / 300 dpi
Size (WxDxH)	177.5 x 220.8 x 150.7 mm
Print Speed (Max)	6 IPS / 4 IPS

The innovative ZD421 4" desktop printer is the ideal choice for sustainable label printing in retail, hospitality, transportation & logistics, light manufacturing, or even in healthcare.

[Specification sheet](#)

[Labels & Ribbons](#)

ZD621T

**MAXIMUM PRINT QUALITY,
EFFICIENCY & MANAGEABILITY**



[View printer prices](#)

[View accessory prices](#)

Printing Technology	Thermal Transfer
Resolution	203 dpi / 300 dpi
Size (WxDxH)	202 x 267 x 192 mm
Print Speed (Max)	8 IPS / 6 IPS

Compact and easy-to-use, the ZD621 thermal transfer desktop label printer is flawless and delivers next-generation, enhanced features. Super reliable, this easy-to-transport ZD621 gives you years of stress-free printing with unmatched intelligence and security.

[Specification sheet](#)

[Labels & Ribbons](#)

ZD621D

**TOP OF THE LINE PRINTER.
INVEST IN THE BEST**



[View printer prices](#)

[View accessory prices](#)

Printing Technology	Direct Thermal
Resolution	203 dpi
Size (WxDxH)	202 x 267 x 192 mm
Print Speed (Max)	8 ips

With next-generation premium features, the ZD621D direct thermal desktop barcode label printer delivers outstanding printing performance and reliability. This 4 inch machine is easy to transport and succeeds the proven and popular ZD620, GX Series and ZD500 printers.

[Specification sheet](#)

[Labels & Ribbons](#)

[BACK TO CONTENTS](#)



ZD621R RFID

EAS, MAXIMUM PERFORMANCE,
UNMATCHED SECURITY



[View printer prices](#)

[View accessory prices](#)

Printing Technology	Thermal Transfer
Resolution	203 dpi / 300 dpi
Size (WxDxH)	202 x 267 x 192 mm
Print Speed (Max)	8 IPS / 6 IPS

Expect the best with the ZD621R 4-inch desktop printer / encoder. Super reliable and easy-to-use, this all in 1 compact desktop printer delivers premium RFID printing / encoding and boasts best-in-class features and accessories for a flawless printing experience.

[Specification sheet](#)

[Labels & Ribbons](#)

ZD611R RFID

ZEBRA RFID: MORE TRANSFOR-
MATION, NO COMPLICATION



[Visit the site](#)

Printing Technology	Thermal Transfer / Direct Thermal
Resolution	203 dpi / 300 dpi
Size (WxDxH)	138.7 x 242.9 x 169.2 mm
Print Speed (Max)	8 IPS / 6 IPS

The compact Zebra ZD611R RFID Desktop Printer is a high-quality 2" printer and offers various functions and technologies of the next generation. As such, it also impresses with high flexibility, reliability and future security. For intuitive operation and easier control, it is equipped with a highly visible status indicator.

[Specification sheet](#)

ZD611T

INVEST IN THE BEST FOR
YEARS OF QUALITY PRINTING



[Visit the site](#)

Printing Technology	Thermal Transfer
Resolution	203 dpi / 300 dpi
Size (WxDxH)	138.7 x 242.9 x 169.2 mm
Print Speed (Max)	8 IPS / 6 IPS

Expect the best with the new Zebra ZD611T thermal transfer desktop printer range from Zebra. These compact label printers boast premium features and next generation technology to give you maximum performance, industry-leading reliability, unrivalled intelligence and security.

[Specification sheet](#)

ZD611D

EXPECT THE BEST, SIMPLE TO
SET UP & EASY TO MAINTAIN



[Visit the site](#)

Printing Technology	Direct Thermal
Resolution	203 dpi / 300 dpi
Size (WxDxH)	115 x 220 x 151 mm
Print Speed (Max)	8 IPS / 6 IPS

Ideal for all your label and barcode printing needs, this robust, expertly designed printer features innovative architecture and advanced security to provide the ultimate in reliable, high-quality applications.

[Specification sheet](#)



ZD230T

**EXTRA FEATURES, QUALITY
CONSTRUCTION, EXCEPTIONAL VALUE**



[View printer prices](#)

Printing Technology	Thermal Transfer
Resolution	203 dpi
Size (WxDxH)	Dependant on variant
Print Speed (Max)	4 IPS / 6 IPS Dependant on variant

The ZD230 desktop printer gives you extra features and reliable operation at an affordable price—both at the point of purchase and across the entire lifecycle. Engineered with Zebra quality, it boasts a dual-wall construction. Offers wireless connectivity for networked, remote printing.

[Specification sheet](#)

ZD230D

**GIVES YOU MORE FOR YOUR
INVESTMENT**



[View printer prices](#)

Printing Technology	Thermal Transfer
Resolution	203 dpi
Size (WxDxH)	Dependant on variant
Print Speed (Max)	4 IPS / 6 IPS Dependant on variant

The ZD230 desktop printer gives you extra features and reliable operation at an affordable price—both at the point of purchase and across the entire lifecycle. Engineered with Zebra quality, it boasts a dual-wall construction. Offers wireless connectivity for networked, remote printing.

[Specification sheet](#)

ZD411D

**FLEXIBLE, ADVANCED, COMPACT
PRINTING**



[View printer prices](#)

Printing Technology	Thermal Transfer
Resolution	203 dpi / 300 dpi
Size (WxDxH)	138.7 x 242.9 x 169.2 mm
Print Speed (Max)	8 IPS / 6 IPS

Delivering features, flexibility and security you need for years of performance - all in an incredibly small footprint. The new architecture for added performance in engineered to grow your business for years of hassle-free printing.

[Specification sheet](#)

ZD421C

PACKED WITH FEATURES, FLEXIBILITY,



[Visit printer prices](#)

Printing Technology	Thermal Transfer / Direct Thermal
Resolution	203 dpi / 300 dpi
Size (WxDxH)	Dependant on variant
Print Speed (Max)	6 IPS / 4 IPS

Elevate your expectations with the advanced desktop printer that delivers the features, flexibility, reliability and security you need – today and tomorrow. Direct thermal, thermal transfer, healthcare and ribbon cartridge models support a wide variety of applications.

[Specification sheet](#)

[BACK TO CONTENTS](#)



ZD411D

**SIMPLE TO SET UP USE
AND MANAGE**



[View printer prices](#)

Printing Technology	Thermal Transfer / Direct Thermal
Resolution	203 & 300 dpi
Size (WxDxH)	115 x 220 x 151 mm
Print Speed (Max)	6 ips / 4 ips

The ZD411d 2-inch desktop printer delivers the features, flexibility and security customers need for years to come. Featuring a new architecture and Zebra's exclusive Print DNA software suite, the ZD411d allows easy setup, operation and maintenance.

[Specification sheet](#)



Desktop Printers

Compact, Easy to Use Desktop Printers
for Every Application



ABOUT BROTHER

Designed for high-volume label printing in production environments, the Brother TJ series provides performance you can rely on. The durable thermal label printers offer rapid print speeds, large ribbon capacity and an internal rewinder on selected models - making them perfect for any industrial printing application.

In addition, our industrial printers support various printer command languages, including ZPL2 emulation, and offer multiple connectivity features ensuring you enjoy a hassle-free printer setup.

Whether your labelling products, pallets, boxes or something else - labelling solutions from the TJ series are "At your side" every step of the way.



TJ4 Series

DURABLE INDUSTRIAL LABEL PRINTERS



[Visit the site](#)

Printing Technology	Thermal Transfer / Direct Thermal
Resolution	203 & 300 dpi
Size (WxDxH)	248 x 436 x 274 mm
Print Speed (Max)	6-10 ips (dependant on variant)

The Brother TJ4 Industrial Label Printer series has been designed to ensure minimal downtime and maximum productivity through fast print speeds, large ribbon capacity and in-built durability, making it perfect for tough production environments.

[Specification sheet](#)

TJ6 Series

PERFORMANCE AND DURABILITY YOU CAN RELY ON



[View printer prices](#)

Printing Technology	Thermal Transfer / Direct Thermal
Resolution	203 & 300 dpi
Size (WxDxH)	357 x 514 x 313 mm
Print Speed (Max)	10 -12 ips (dependant on variant)

The TJ6 Industrial Label Printer series has been designed to ensure minimal downtime and maximum productivity through fast print speeds, large ribbon capacity and in-built durability, making it perfect for tough production environments.

[Specification sheet](#)

[BACK TO CONTENTS](#)

CITIZEN

ABOUT CITIZEN

Citizen's industrial printers are built for durability and compatibility in warehouse, shipping and production environments. These machines include Citizen's innovative Cross-Emulation™ feature and our pioneering Hi-Lift™ mechanism for easy access to ribbons and media.

- Robust metal chassis and heavy-duty metal case for durability
- Front panel-mounted LCD clearly shows operating status
- Quick and simple setup and operation
- Colour LCD screen (Mk III series onwards)
- Print wirelessly with Standalone Forms
- Enhanced user experience with set up wizard
- USB and LAN interfaces as standard
- Optional interfaces available: Wireless LAN, Serial and Parallel
- Cross Emulation, autoswitch between Zebra® and Datamax® emulations



CL-S703III

**CLEAR, ACCURATE, RELIABLE
LABELS EVERY TIME**

[Visit the site](#)



Printing Technology	Thermal Transfer / Direct Thermal
Resolution	300 dpi
Size (WxDxH)	255 x 490 x 265 mm
Print Speed (Max)	10 ips

The Citizen CL-S703III industrial label printer is a pinnacle in label printing technology, meticulously crafted to deliver an unparalleled user experience while consistently producing exceptional labels in high resolution.

[Specification sheet](#)

CL-S703II

**HIGH SPEED, HIGH RESOLUTION,
HEAVY DUTY PRINTING**

[View printer prices](#)

[View accessory prices](#)



Printing Technology	Thermal Transfer / Direct Thermal
Resolution	203 dpi
Size (WxDxH)	255 x 490 x 265 mm
Print Speed (Max)	10 ips

The CL-S521II offers a reliable, easily integrated industrial desktop printing solution. These units are supplied as standard with on-board ZPL® and Datamax® emulations plus BASIC Interpreter programming support, offering maximum flexibility and easy compatibility with other applications.

[Specification sheet](#)

CL-S700RII

HIGH-SPEED INDUSTRIAL PRINTING



[View printer prices](#)

[View accessory prices](#)

Printing Technology	Thermal Transfer / Direct Thermal
Resolution	203 dpi
Size (WxDxH)	255 x 490 x 385 mm
Print Speed (Max)	10 ips

The CL-S700 Series are designed for ease of use; the metal mechanism opens vertically to a full 90° to allow for easy ribbon access, while integrated ribbon control and positioning support precision printing on even small or specialist media.

[Specification sheet](#)

CL-S700DTII

THE RIGHT PLACE TO START FOR INDUSTRIAL PRINTING



[View printer prices](#)

[View accessory prices](#)

Printing Technology	Direct Thermal
Resolution	203 dpi
Size (WxDxH)	255 x 490 x 265 mm
Print Speed (Max)	7 ips

The Citizen CL-S700DTII Industrial label printer is an entry level printer incorporating a wide range of features and is capable of producing excellent definition from an advanced design of printhead.

[Specification sheet](#)

CL-S700II

INDUSTRIAL PRINTING WITH ADDED SPEED & CAPACITY



[View printer prices](#)

[View accessory prices](#)

Printing Technology	Direct Thermal / Thermal Transfer
Resolution	203 dpi
Size (WxDxH)	255 x 490 x 265 mm
Print Speed (Max)	10 ips

CL-S700II series is designed for ease of use; the metal mechanism opens vertically to a full 90° to allow for easy ribbon access, while integrated ribbon control and positioning support precision printing on even small or specialist media.

[Specification sheet](#)

CL-E730

HIGH RESOLUTION IN YOUR BUSINESS



[View printer prices](#)

[View accessory prices](#)

Printing Technology	Thermal Transfer / Direct Thermal
Resolution	300 dpi
Size (WxDxH)	250 x 458 x 261 mm
Print Speed (Max)	6 ips

The Citizen CL-E730 desktop label printer is packed with features usually reserved for higher class machines. Designed and built for easy operation and service, it includes the proven Citizen ARCP™ mechanism in combination with 300 dpi, which guarantee sharp, high quality print results.

[Specification sheet](#)

[Labels & Ribbons](#)

[BACK TO CONTENTS](#)

CITIZEN

CL-E720

COST EFFECTIVE TABLE TOP PRINTING.



[View printer prices](#)

[View accessory prices](#)

Printing Technology	Direct Thermal / Thermal Transfer
Resolution	203 dpi
Size (WxDxH)	250 x 458 x 261 mm
Print Speed (Max)	8 ips

The CL-E720 desktop label printer is packed with features usually reserved for higher class machines. Designed and built for easy operation and service, it includes the proven Citizen ARCP™ mechanism, which guarantees sharp, high quality print results.

[Specification sheet](#)

[Labels & Ribbons](#)

CL-6621

THE NEW DIMENSION IN DESKTOP LABEL PRINTING



[View printer prices](#)

[View accessory prices](#)

Printing Technology	Direct Thermal / Thermal Transfer
Resolution	203 dpi
Size (WxDxH)	303 x 290 x 273 mm
Print Speed (Max)	6 ips

The Citizen CL-S6621 desktop label printer is smaller and more efficient than any other comparable printer, offering automatic Cross-Emulation, for easy integration and compatibility, and features our advanced Hi Lift™ Mechanism.

[Specification sheet](#)

[Labels & Ribbons](#)

CL-S700iii

INDUSTRIAL LABEL PRINTING AT ITS FINEST



[View printer prices](#)

Printing Technology	Direct Thermal / Thermal Transfer
Resolution	203 dpi
Size (WxDxH)	255 x 490 x 265 mm
Print Speed (Max)	4 ips

The favourite industrial label printer for manufacturing, warehousing and logistics businesses. Featuring Cross Emulation, the CL-S700III can flawlessly and automatically switch between Zebra® and Datamax® emulations – making integration fast and simple.

[Specification sheet](#)

CL-S703Rii

CLEAR, CONVENIENT AND RELIABLE LABELS EVERY



[View printer prices](#)

Printing Technology	Direct Thermal / Thermal Transfer
Resolution	300 dpi
Size (WxDxH)	255 x 490 x 385 mm
Print Speed (Max)	10 ips

Combining some of the best industrial label printer features to create a user friendly label printing solution for manufacturing, warehousing and logistics businesses who require high resolution labels. Printing scannable and long lasting labels is now even simpler.

[Specification sheet](#)

CL-S700Riii

**INDUSTRIAL LABEL PRINTER
WITH PEELER AND REWINDER**



[View printer prices](#)

Printing Technology	Direct Thermal / Thermal Transfer
Resolution	203 dpi
Print Speed (Max)	300 mm/sec
Control Panel	2 buttons, colour LCD panel

The CL-S700RIII with peeler and rewinder is designed to make the printing process of industrial labels even more convenient. The internal peeler can be set up to automatically peel labels from the media backing without any extra manual work.

[Specification sheet](#)

CL-S621II

**THE DESKTOP PRINTER
THAT MAKES LIFE EASY**



[View printer prices](#)

[View accessory prices](#)

Printing Technology	Direct Thermal / Thermal Transfer
Resolution	203 dpi
Size (WxDxH)	231 x 289 x 270 mm
Print Speed (Max)	6 ips

The CL-S621II is a precision engineered, fast and easy-to-use unit that includes the option to print in both direct thermal and thermal transfer modes. The printer also features Citizen's Hi-Lift™ metal mechanism and the innovative ARCP™ anti-wrinkle and automatic tensioning system.

[Specification sheet](#)

[BACK TO CONTENTS](#)

**The Desktop Printer
that makes life easy**



Honeywell

ABOUT HONEYWELL

For commercial light-volume jobs to rugged, round-the-clock printing, built-in “smarts” means greater efficiency and lower cost. Tough. Dependable. Smart. Secure. Honeywell industrial label, ticket, and tag printers easily handle any type of application, from commercial light-volume needs to rugged, round-the-clock printing performance.

- The PD45S/PD45 runs on Arm Cortex-A7 / 800Mhz processor, 128M memory and 128M DDR3 SDRAM. It features a sophisticated industrial print head which supports both direct thermal and thermal transfer printing modes.
- The rugged, all-metal PX45 and PX65 printers deliver outstanding performance – up to 12 inches per second from first label to last – and incorporate features that reduce downtime and minimize maintenance costs.
- Two sets of adjustable pressure bars and double media guides ensures accurate paper feeding and help to avoid ribbon wrinkles & printing dirt.

PX45A

FLEXIBLE, COMPACT & PROGRAMMABLE

[Visit the site](#)



Printing Technology	Thermal Transfer / Direct Thermal
Resolution	203, 300 & 406 dpi
Size (WxDxH)	275 x 482 x 238 mm
Print Speed (Max)	4-10 ips (203/300) & 4-10 ips

The PX45 PX65 Series industrial printer is built to meet the needs of round-the-clock, mission-critical applications. These rugged printers deliver advanced connectivity and network protocols, ensuring peace of mind today and a reliable, scalable solution for the long haul.

[Specification sheet](#)

PD45S

ERGONOMIC DESIGN INDUSTRIAL PRINTER

[Visit the site](#)



Printing Technology	Thermal Transfer
Resolution	203 & 300 dpi
Size (WxDxH)	249 x 438 x 270 mm
Print Speed (Max)	2-10 ips (203 dpi) / 2-8 ips (300 dpi)

Uniquely designed using minimum internal mechanical parts and an all-metallic frame structure, PD45S is sturdy and durable. This gives our printer a tough, compact, and sleek appearance, suitable for use in a wide range of settings & applications. Full colour touch screen

[Specification sheet](#)

PD45

NEW COMMERCIAL GRADE INDUSTRIAL PRINTER

[Visit the site](#)



Printing Technology	Thermal Transfer
Resolution	203 & 300 dpi
Size (WxDxH)	249 x 438 x 270 mm
Print Speed (Max)	2-10 ips (203 dpi) / 2-8 ips (300 dpi)

Uniquely designed using minimum internal mechanical parts and an all-metallic frame structure, the Honeywell PD45 industrial label printer is sturdy and durable. This gives our printer a tough, compact, and sleek appearance, suitable for use in a wide range of settings & applications.

[Specification sheet](#)

PM45

SMART LABEL SOLUTION THAT ENHANCES AUTOMATION



[Visit the site](#)

Printing Technology	Thermal Transfer
Resolution	203, 300, 406 & 600 dpi
Size (WxDxH)	284 x 483 x 295 mm
Print Speed (Max)	2-14 ips, dependant on dpi

The Honeywell PM45 is built for smart label solutions that help enterprises enhance automation and intelligence in manufacturing and supply chain management for high operating efficiency. The Honeywell PM45 industrial printer is designed to give businesses the flexibility and precision for high-volume printing.

[Specification sheet](#)

PM45C

SMART PRINTING CAPABILITY, EASILY CONFIGURABLE



[Visit the site](#)

Printing Technology	Thermal Transfer
Resolution	203, 300, 406 & 600 dpi
Size (WxDxH)	253 x 432 x 181 mm
Print Speed (Max)	2-14 ips, dependant on dpi

The Honeywell PM45 series industrial printer is designed for high quality label printing in harsh industrial environments. The WWAN connective printer enables 24/7 data communication and real-time visibility of critical data from a wide range of locations.

[Specification sheet](#)

PX940

INDUSTRIAL PRINTER WITH INTEGRATED LABEL VERIFICATION



[Visit the site](#)

Printing Technology	Thermal Transfer / Direct Thermal
Resolution	203, 300 & 600 dpi
Size (WxDxH)	231 x 289 x 183 mm
Print Speed (Max)	2-14 ips, dependant on dpi

The Honeywell PX940 Industrial Printer takes industrial printing to a new level of accuracy and simplicity. Providing customers with error-free precision printing, increasing production efficiency and reducing operational costs.

[Specification sheet](#)

PX65A

FLEXIBLE, COMPACT & PROGRAMMABLE



[Visit the site](#)

Printing Technology	Thermal Transfer / Direct Thermal
Resolution	203 & 300 dpi
Size (WxDxH)	335 x 482 x 238 mm
Print Speed (Max)	4-9 ips

The rugged, all-metal PX45 and PX65 printers deliver outstanding performance – up to 12 inches per second from first label to last – and incorporate features that reduce downtime and minimize maintenance costs

[Specification sheet](#)

[BACK TO CONTENTS](#)

Honeywell

PM65

**LABEL PRINTING IN HARSH
INDUSTRIAL ENVIRONMENTS**



[View printer prices](#)

Printing Technology	Thermal Transfer / Direct Thermal
Resolution	203 & 300 dpi
Size (LxHxW)	484 x 292 x 350 mm
Print Speed (Max)	2-12 ips (203) & 2-10 ips (300)

The PM65 industrial printers offer high-precision and high volume printing along with remote configuration and diagnostics functionalities that increase production efficiency and supply chain transparency in food and beverage, pharmaceuticals, manufacturing, warehouse, and distribution center management.

[Specification sheet](#)

Honeywell

**Durable printers that can deliver
around-the-clock performance**



BX610T

**PREMIUM WIDE-WEB
INDUSTRIAL PRINTER**



[View printer prices](#)

Printing Technology	Direct Thermal / Thermal Transfer
Resolution	203 dpi / 305 dpi
Size (WxDxH)	331 x 460 x 310 mm
Print Type	Near Edge

Offering both thermal transfer and direct thermal printing, it uses Toshiba's proven near-edge technology to deliver exceptional reliability with long-life print heads and optional ribbon save functionality.

[Specification sheet](#)

BX620T

**WIDE-FORMAT PRINTING
WITHOUT COMPROMISE**



[View printer prices](#)

Printing Technology	Thermal Transfer / Direct Thermal
Resolution	203 & 305 dpi
Size (WxDxH)	331 x 460 x 310 mm
Print Type	Flat Head

Designed to support businesses upgrading from legacy systems, offering seamless integration into existing infrastructures. Using thermal transfer printing with flat-head technology, it ensures consistent and reliable output, tailored specifically for 6-inch label formats.

[Specification sheet](#)

B-EX4T2

**MAXIMUM ROI, LOW COST
PRINTING SOLUTIONS**



[View printer prices](#) [View accessory prices](#)

Printing Technology	Thermal Transfer / Direct Thermal
Resolution	203, 300 & 600 dpi
Size (WxDxH)	278 x 460 x 310 mm
Print Speed (Max)	12 ips (203/300 dpi) / 6 ips (600)

With image quality up to 600 dpi resolution, snap-in print head replacement, and enhanced performance at an attractive running cost, the Toshiba Tec B-EX4T2 industrial label printer is a product your business cannot be without. With flat head technology, left edge aligned media and an 800m ribbon there are fewer media changes.

[Specification sheet](#)

[Labels & Ribbons](#)

B-EX4T3

**ACCURACY BOUGHT TO
PERFECTION**



[Visit the site](#)

Printing Technology	Thermal Transfer / Direct Thermal
Resolution	600 dpi
Size (WxDxH)	278 x 460 x 310 mm
Print Speed (Max)	6 ips

The B-EX4T3 is an industrial printer which combines high-speed output with utmost efficiency for low running costs. Amazing accuracy even on labels as small as 3 mm gives you full flexibility and makes it the ideal choice for a large number of applications.

[Specification sheet](#)

[BACK TO CONTENTS](#)

TOSHIBA

B-EX6T3

**REDEFINING THE INDUSTRIAL
PRINTER MARKETPLACE**



[View printer prices](#)

[View accessory prices](#)

Printing Technology	Thermal Transfer / Direct Thermal
Resolution	203 & 300 dpi
Size (WxDxH)	331 x 460 x 310 mm
Print Speed (Max)	3-12 ips (dependant on dpi)

The Toshiba Tec B-EX6T3 industrial barcode label printer is a unique product combining near edge technology with a 600 meter ribbon, and high print speed. The technology is at the forefront of performance and technology, improving printing efficiency, and reducing costs.

[Specification sheet](#)

[Labels & Ribbons](#)

B-EX6T1

FLEXIBLE. DURABLE. RELIABLE



[View printer prices](#)

[View accessory prices](#)

Printing Technology	Thermal Transfer / Direct Thermal
Resolution	203 dpi / 300 dpi
Size (WxDxH)	331 x 460 x 310 mm
Print Speed (Max)	12 IPS

Looking for an industrial label printer that prints at 12 inches per second? Then look no further than the Toshiba TEC B-EX6T1 Industrial Barcode Label Printer. Advanced processing gives the Toshiba Tec B-EXT61 the performance to meet high demand levels in the wide-web printing marketplace

[Specification sheet](#)

[Labels & Ribbons](#)

B-EX4D2

**THE PERFECT SOLUTION FOR
DIRECT THERMAL APPLICATIONS**



[View printer prices](#)

[View accessory prices](#)

Printing Technology	Direct Thermal
Resolution	203 dpi
Size (WxDxH)	278 x 460 x 310 mm
Print Speed (Max)	12 IPS

The Toshiba Tec B-EX4D2 industrial label printer focuses on the direct thermal printing method favoured in logistics, although it has plenty of capability to operate in the retail industry. A high performance printer with the capacity to produce high volumes of labels.

[Specification sheet](#)

[Labels & Ribbons](#)

BA-410T

**SUPERB RELIABILITY & ROBUSTNESS
IN RUGGED ENVIRONMENTS**



[Visit the site](#)

Printing Technology	Thermal Transfer / Direct Thermal
Resolution	203 dpi / 300 dpi
Size (WxDxH)	245 x 414 x 333 mm
Print Speed (Max)	8 ips

The Toshiba BA410T with its entirely new software platform ensures it will keep pace even with the latest technology standards and requirements. Thanks to future-proof options and a broad set of features, the BA410T offers solutions that are usually reserved for industrial printers only.

[Specification sheet](#)

BA-420T

**NEXT-GEN WITH ENTIRELY
NEW SOFTWARE PLATFORM**



[Visit the site](#)

Printing Technology	Direct Thermal / Thermal Transfer
Resolution	203 dpi / 300 dpi
Size (WxDxH)	245 x 350 x 332 mm
Print Speed (Max)	8 ips

The new platform adds not only performance but extends the connectivity and adaptability of the BA420T to meet the challenges of an ever-changing workplace. The BA420T with its small footprint brings the performance of an industrial printer to workplaces where space is a premium.

[Specification sheet](#)

B-EX4T1

**EXCEPTIONAL INDUSTRIAL
PRINTER, REASONABLY PRICED**



[View printer prices](#)

[View accessory prices](#)

Printing Technology	Thermal Transfer / Direct Thermal
Resolution	203 & 300 dpi
Size (WxDxH)	278 x 460 x 310 mm
Print Speed (Max)	14 ips

The Toshiba Tec B-EX4T1 industrial barcode label printer provides an outstanding printer option for your industrial label needs. Based on the trusted functionality of the B-SX range, but with enhancements to improve performance and speed

[Specification sheet](#)

[Labels & Ribbons](#)

TOSHIBA

BX600 Series

A NEW LEVEL OF INDUSTRIAL PRINTING

- Reliable
- Efficient
- Future-proof



[BACK TO CONTENTS](#)

INDUSTRIAL PRINTERS



ABOUT TSC

Our Performance industrial printer selection is built for high-performance and high-volume printing. With some of our fastest print speeds and premium printhead technology, our Performance industrial thermal printers deliver high-quality, crisp and clear labels for nearly any industrial printing application. Our industrial printers come enhanced with features like colorful LCD displays, multiple resolutions, and extensive communication options including Wi-Fi and Bluetooth.

Optimized Space Efficiency

- The bifold door reduces space usage by 24%, streamlining media, ribbon replacement, and cleaning for efficient operations in limited space. (Available for the MB241 Series)

High-Quality Printing Assurance

- Equipped with features to adjust the multi-point thermal printhead (TPH) pressure and heat line, it ensures consistent, high-quality printing.
- Options like linerless kits, cutter, internal rewinder kit, and peel-off kit enhance printer versatility and cater to diverse needs.

TSC Sense Care Smart Monitoring

- TSC Sense Care prevents downtime by monitoring printhead health with self-diagnostic TPH Care, printhead mileage, and cutter counts.

Software Capabilities Harmonize Operations

- Auto-switch printer language emulation simplifies printer fleet migration and upgrades without changing print commands and label templates.
- TSC Standalone Creator generates printer LCD UI for quick template access and TSCPRTGo turns a mobile device into an extended display for mobile printing.
- SOTI Connect and TSC Console manage printer fleets, enabling swift deployment, configuration, and updates remotely.

Commitment to Sustainability

- 100% recyclable packaging reduces environmental waste.
- 100% recyclable printer casing with over 90% recyclable printer components.
- The optional linerless kit offers a sustainable solution for greener label printing.



INDUSTRIAL PRINTERS



TTP-286MT

**PRECISION IN WIDE FORMAT
PRINTER**



[View printer prices](#)

[View accessory prices](#)

Printing Technology	Thermal Transfer
Resolution	203 dpi
Size (WxDxH)	440 x 514 x 336 mm
Print Speed (Max)	6 IPS

The easy-to-use TSC TTP-286MT Series wide-format thermal transfer industrial barcode label printer is ideally suited for compliance labeling, brand marketing, inventory control, drum labeling, warning signs and a host of other signage solutions.

[Specification sheet](#)

[Labels & Ribbons](#)

MH241 Series

**A FEATURE-RICH MH FAMILY
BEYOND YOUR EXPECTATIONS**



[Visit the site](#)

Printing Technology	Thermal Transfer / Direct Thermal
Resolution	203 dpi / 300 dpi
Size (WxDxH)	276 x 502 x 326 mm
Print Speed (Max)	14 IPS / 12 IPS

The MH241 Series is TSC's mainstream industrial barcode label printer built upon the legacy of the MH240 Series. It brings new features to those looking for solutions to address evolving business challenges from growing production line demands to increasing operational complexities.

[Specification sheet](#)

MH261

**HIGHLY ADAPTABLE WITH
BRILLIANT USER EXPERIENCE**



[Visit the site](#)

Printing Technology	Thermal Transfer
Resolution	203 dpi / 300 dpi
Size (WxDxH)	276 x 502 x 326 mm
Print Speed (Max)	14 ips

The MH261 Series is TSC's mainstream industrial barcode label printer built upon the legacy of the MH240 Series. It brings new features to those looking for solutions to address evolving business challenges from growing production line demands to increasing operational complexities.

[Specification sheet](#)

MX Series

**THE NEXT EVOLUTION IN HIGH
SPEED PRINTING**



[Visit the site](#)

Printing Technology	Thermal Transfer / Direct Thermal
Resolution	203 dpi / 300 dpi / 600 dpi
Size (WxDxH)	300 x 510 x 393 mm
Print Speed (Max)	18 ips / 14 ips / 6 ips

The MX Series 4-Inch Performance Industrial thermal Printers is ruggedly built for high volume, high quality label printing. Featuring one of the fastest print speeds in its class, the MX241P Series boosts productivity with quicker processing power, communications and printing speeds.

[Specification sheet](#)

[BACK TO CONTENTS](#)



MB240T

SMALL FOOTPRINT, BIG IMPACT



[View printer prices](#)

[View accessory prices](#)

Printing Technology	Thermal Transfer
Resolution	203 dpi / 300 dpi
Size (WxDxH)	248 x 436 x 274 mm
Print Speed (Max)	10 ips (203) / 7 ips (300)

The MB240 series of industrial thermal label printers is a new value leader for 4" wide light industrial label printing. The MB240 series is designed to fit in alongside TSC's bigger industrial printer models including the MH240 and MX240P Series.

[Specification sheet](#)

[Labels & Ribbons](#)

ML Series

A COMPACT, EFFORTLESS INDUSTRIAL PRINTER



[Visit the site](#)

Printing Technology	Thermal Transfer / Direct Thermal
Resolution	203 dpi / 300 dpi
Size (WxDxH)	248 x 416 x 245 mm
Print Speed (Max)	8 IPS / 6 IPS

The ML Series industrial label printers are known for their small footprint and effortless operations. Its intuitive design simplifies the user experience, allowing for easy adjustment of the thermal printhead (TPH) pressure and ribbon tension balance, ensuring optimal printing quality.

[Specification sheet](#)

ML240 Series

**SIMPLICITY AND AGILITY
JUST ONE STEP AWAY**



[View printer prices](#)

[View accessory prices](#)

Printing Technology	Thermal Transfer
Resolution	203 dpi / 300 dpi
Size (WxDxH)	248 x 330 x 245 mm
Print Speed (Max)	6 ips / 5 ips

TSC ML240 Series is a brand new generation of industrial label printer. The light industrial ML240 Series features ease of use, intuitive colour GUI display, noise-reduced printing, and self-diagnostic TPH Care. The ML240 Series has a durable and flexible design.

[Specification sheet](#)

[Labels & Ribbons](#)



[BACK TO CONTENTS](#)

INDUSTRIAL PRINTERS



T6000e 4"

RELIABLE OPERATION, QUALITY CONSTRUCTION, GREAT VALUE



[Visit the site](#)

Printing Technology	Thermal Transfer / Direct Thermal
Resolution	203, 300 & 600 dpi
Size (WxDxH)	297.2 x 520.7 x 330.2 mm
Print Speed (Max)	14 ips

The T6000e industrial printer series sets the standard for productivity and versatility in fast-paced environments where speed, exceptional print quality and advanced features such as RFID and real time barcode verification are needed.

[Specification sheet](#)

T4000 4"

SMALL, FAST AND READY TO BOOST PRODUCTIVITY



[Visit the site](#)

Printing Technology	Thermal Transfer / Direct Thermal
Resolution	203 & 300 dpi
Size (WxDxH)	264 x 455 x 276 mm
Print Speed (Max)	10 ips / 7 ips

The T4000 light industrial printer series is our most compact and affordable industrial printer with the ability to print 5,000 labels a day at speeds of up to 10-inches per second. The 4-inch models come equipped with high-end features and remote printer management capabilities.

[Specification sheet](#)



Industrial Printers

Our industrial thermal label printers are designed for high-performance, high-volume printing, delivering high-quality labels for nearly any industrial application.



ABOUT ZEBRA

Designed for the Harshest Environments

Zebra industrial printers are designed for harsh and demanding environments. With rugged durability and future-proof adaptability, our user-friendly barcode label and RFID printers are designed to provide 24/7 reliability. Don't compromise. Choose Zebra for your high- to mid-volume applications.

A new level of performance, versatility and ease of use. Rugged Durability, Designed to Grow With Your Evolving Business Needs

Key features

- Print Width: From 4 in. to 8" Wide
- Print Technology: Direct Thermal, Thermal Transfer Roll
- Print Speed: Up To 14 ips (356 mm Per Sec)
- Print Resolution: 203 dpi (8 dot/mm), 300 dpi (12 dot/mm), 600 dpi (24 dot/mm)

ZT610

A LEAP FORWARD IN INDUSTRIAL THERMAL PRINTING



[View printer prices](#)

[View accessory prices](#)

Printing Technology	Thermal Transfer / Direct Thermal
Resolution	203, 300 & 600 dpi
Size (WxDxH)	268.2 x 505 x 395.68 mm
Print Speed (Max)	14 ips / 12 ips / 6 ips

Advancing the legacy of their industry-leading Xi Series predecessors, the ZT610 combines rugged durability and exceptional performance on a user-friendly, future-ready platform. These next-generation workhorses are designed to help you navigate the rapidly evolving business technology landscape.

[Specification sheet](#)

[Labels & Ribbons](#)

ZT111

BUDGET CAN BE BRILLIANT, TOO



[View printer prices](#)

[View accessory prices](#)

Printing Technology	Thermal Transfer / Direct Thermal
Resolution	203 & 300 dpi
Size (WxDxH)	241 x 432 x 279 mm
Print Speed (Max)	10 ips / 6 ips

The Zebra ZT111 industrial label printer gives you more features, more longevity, more security and more uptime. Get easy setup and use, along with fast print speeds, all in a space-saving footprint. Futureproof with built-in intelligence and flexible options that you can add onsite.

[Specification sheet](#)

[Labels & Ribbons](#)

ZT231

AFFORDABLE, INDUSTRIAL RFID PRINTING/ENCODING



[View printer prices](#)

[View accessory prices](#)

Printing Technology	Thermal Transfer / Direct Thermal
Resolution	203 dpi / 300 dpi
Size (WxDxH)	241 x 432 x 279 mm
Print Speed (Max)	12 ips / 8 ips

The Zebra ZT231 RFID Industrial Label Printer is an industrial printer that won't break the bank. Offering just the right features and functionality at just the right price, the ZT231 is redefining value. Drive your business forward with fast print speeds and a large colour touchscreen—all within a space-saving footprint.

[Specification sheet](#)

[Labels & Ribbons](#)

INDUSTRIAL PRINTERS



ZT411

**KEEPS CRITICAL OPERATIONS
RUNNING SMOOTHLY**



[View printer prices](#)

[View accessory prices](#)

Printing Technology	Thermal Transfer / Direct Thermal
Resolution	203 dpi / 300 dpi / 600 dpi
Size (WxDxH)	269 x 495 x 324 mm
Print Speed (Max)	14 ips / 10 ips / 4 ips

The ZT400 Series, ZT411 RFID industrial printer/encoder pair UHF RFID capabilities with proven durability to help keep your critical operations running efficiently. Optimised to accurately and efficiently print and encode labels for today's item-level tracking applications, the ZT400 Series RFID gives you enhanced tracking capabilities and deeper visibility.

[Specification sheet](#)

[Labels & Ribbons](#)

ZT421RFID

**DURABLE CONSTRUCTION,
PRECISE PRINTING**



[View printer prices](#)

[View accessory prices](#)

Printing Technology	Thermal Transfer / Direct Thermal
Resolution	203, 300 & 600 dpi
Size (WxDxH)	269 x 495 x 324 mm
Print Speed (Max)	12 ips

The ZT421 RFID industrial printer offers high throughput and features an all-metal frame for rugged reliability in harsh environments. Adaptive encoding technology allows for excellent media flexibility and simple RFID calibration, eliminating complex placement guidelines.

[Specification sheet](#)

[Labels & Ribbons](#)

ZT510

**OUTSTANDING PERFORMANCE
AT AN UNDERSTATED PRICE**



[View printer prices](#)

[View accessory prices](#)

Printing Technology	Direct Thermal / Thermal Transfer
Resolution	203 dpi / 300 dpi
Size (WxDxH)	268.2 x 512.3 x 395.68 mm
Print Speed (Max)	6 ips / 4 ips

Building on the legacy of the industry-leading, 105SLPlus printer, the Zebra ZT510 industrial printer includes the core features you need in an industrial printer at a cost-effective price point. The ZT510 provides a proven, durable design, construction and monitoring capabilities.

[Specification sheet](#)

[Labels & Ribbons](#)

220XI4

**LEGENDARY RUGGED
DURABILITY AND PRINT QUALITY**



[View printer prices](#)

[View accessory prices](#)

Printing Technology	Direct Thermal / Thermal Transfer
Resolution	203 dpi / 300 dpi
Size (WxDxH)	401.6 x 517.5 x 393.7 mm
Print Speed (Max)	10 ips / 6 ips

The ZD411t 2-inch thermal transfer desktop printer delivers the features, flexibility and security customers need for years to come. Featuring a new architecture and Zebra's exclusive Print DNA software suite allows easy setup, operation and maintenance.

[Specification sheet](#)

[Labels & Ribbons](#)

[BACK TO CONTENTS](#)

LINERLESS PRINTERS

EPSON®

ABOUT EPSON

Epson now produce a range of smart linerless label printers - helping to improve productivity and reduce environmental impacts.

All printers have embedded EPOS capacities and easily integrate into existing POS systems.

What are the benefits of an Epson linerless printer:

- Liner-free media support
- Mobile connectivity
- Sync & charge capability
- Thermal label printer
- Up to 150mm/sec
- High-quality greyscale printing

TM-L90

LABEL AND BARCODE PRINTING



Visit the site

Printing Technology	Direct Thermal
Resolution	203 dpi
Size	140 x 148 x 203 mm
Print Speed (Max)	150 mm/sec

The TM-L90 is Epson's compact thermal label printer that's also ideal for barcode printing. This model effortlessly increases productivity for post offices, pharmacies, supermarkets and other businesses. You can easily print on different types of label and receipt paper, in a variety of different sizes, thanks to the adjustable cutter.

Specification sheet

TM-L100

SMART LINER-FREE LABEL PRINTER



Visit printer prices

Printing Technology	Thermal line printing
Resolution	203 dpi
Size (WxDxH)	140 x 148.5 x 207 mm
Print Speed (Max)	170 mm/sec

This thermal label printer has been developed for a range of retail and hospitality businesses, including fast-food retail chains, restaurants, food delivery services, ghost kitchens, supermarkets, convenient stores and catering. It can also be easily integrated as part of an overall POS solution.

Specification sheet

LINERLESS PRINTERS



ABOUT HONEYWELL

SIMPLE & EFFECTIVE LABELLING. PRINT WITH NO WASTE OR MESS

Toshiba linerless printers can print on adhesive labels with no backing paper, reducing waste and keeping the working environment safe and clean. By matching printer hardware together with our linerless label material, Toshiba has created a fully flexible print solution to suit almost any label print requirement.

- The RPF Series printer prints 25.4mm (1 in) to 104.1 mm (4.1 in) labels/receipts and can accommodate a wide variety of media, including the heavy stock necessary for hang tags and specialty label needs.
- The RPF Series has the latest 802.11 a/b/g/n/ac Wi-Fi capabilities for the best range and fast data communications on your WLAN. It also includes a Bluetooth 5.0 LE radio at no additional charge for when workers are outside of WLAN range or using the printer with a Bluetooth mobile computer.
- Built on Honeywell's software platform, the RPF printer offers IT managers easy integrated device management, a high level of security throughout the entire printer lifespan, and upgrades that allow your printers to be updated with enhanced features.



RPF4

**MAKE PRODUCTIVITY GAINS
AND REDUCE ERRORS**



[View printer prices](#)

Printing Technology	Direct Thermal
Resolution	203 dpi
Size (HxWxD)	187 x 164 x 77 mm
Print Speed (Max)	1—5 ips

Providing big productivity gains and reduces errors by enabling workers to print labels at the location they need, so labels can be applied when and where they need to be applied. Includes powerful CPU and smart power management, it allows smooth, continuous operation so your workers can work efficiently with less media reloading.

[Specification sheet](#)

RP2F

**ULTRA RUGGED AND PORTABLE
LABEL AND RECEIPT PRINTER**



[View printer prices](#)

Printing Technology	Direct Thermal
Resolution	203 dpi
Size (HxWxD)	160 x 116 x 77 mm
Print Speed (Max)	1—5 ips

The RPF Series mobile thermal printers are built for the most rugged environments, offering exceptional media and battery capacity, quiet operation, and excellent value to help operations increase efficiency and minimize downtime.

[Specification sheet](#)

[BACK TO CONTENTS](#)

LINERLESS PRINTERS



ABOUT STAR

Star Micronics is a leading manufacturer of high-quality thermal printers and point of sale (POS) hardware for the retail market.

High quality label printers for any application

Star's range of desktop and portable thermal label printers offers precise printing of fixed-length, linerless labels with high-quality graphics and barcodes for a wide range of retail and industrial applications, including food and allergy labeling, delivery, shelf-edge labeling, product labeling, healthcare, visitor management, and inventory management.

They are easy to integrate into existing systems with both wired and wireless connectivity options, along with sophisticated drivers and software development kits (SDKs) for a wide selection of operating platforms.

TSP143IV SK

IMPROVES EFFICIENCY FROM ORDER TO DELIVERY



[View printer prices](#)

Printing Technology	Direct Thermal
Resolution	203 dpi
Size (WxDxH)	140 x 169 x 123 mm
Print Speed (Max)	180 mm/sec

The TSP143IV SK direct thermal linerless label printer is a cutting-edge solution for businesses seeking efficiency and sustainability in their labeling processes. With its linerless label printing technology, it eliminates the need for backing paper, reducing waste and environmental impact.

[Specification sheet](#)

TSP143IV X4

**ONE MODEL. ALL INTERFACES.
SEAMLESS INTEGRATION**



[View printer prices](#)

Printing Technology	Direct Thermal
Resolution	203 dpi
Size (WxDxH)	140 x 169 x 123 mm
Print Speed (Max)	250 mm/sec

The TSP143IV X4 Linerless Label Printer is a compact and versatile printing solution designed for modern businesses. Featuring a sleek polygon design with a built-in power supply, it can be used horizontally or vertically to suit different environments. It supports high-speed printing and linerless label media, reducing waste and improving efficiency.

[Specification sheet](#)

TSP654IISK

COST EFFECTIVE AND ECO-FRIENDLY



[View printer prices](#)

Printing Technology	Direct Thermal
Resolution	203 dpi
Size (WxDxH)	104 x 203.5 x 132 mm
Print Speed (Max)	300 mm/sec

The TSP654IISK is a cost effective, eco friendly direct thermal linerless label printer designed for full service and quick service restaurants, cafes and takeaway outlets for printing repositionable food and allergy labels, food orders and bag seals and much more.

[Specification sheet](#)

LINERLESS PRINTERS



mC-Label3

VERSATILE DIRECT THERMAL LABEL PRINTER

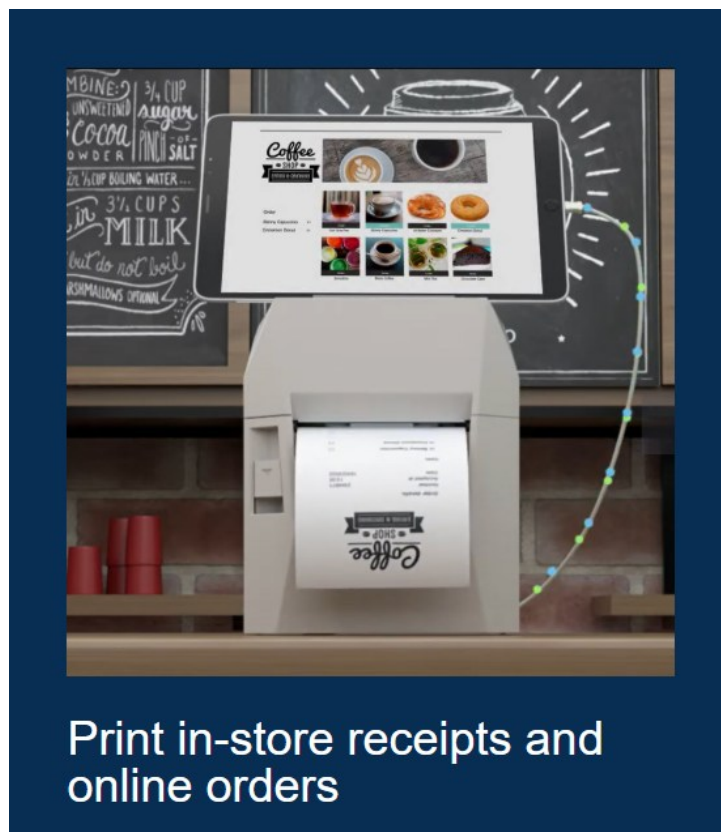


[View printer prices](#)

Printing Technology	Direct Thermal
Resolution	203 dpi
Size (WxDxH)	143 x 212 x 169mm
Print Speed (Max)	180 mm/sec

Combining high quality, versatile thermal label printing with superior connectivity for PC, Network, Tablets and Cloud based systems, the mC-Label3 prints on a wide range of environmentally friendly liner-free media including low adhesive "re-stick" labels as well as high adhesive permanent and semi-permanent linerless labels.

[Specification sheet](#)



Retail POS

High quality, reliable POS printers with minimal running costs



Online Store

Star's technology is integrated with the industry's leading online ordering software



Hospitality

Robust and reliable restaurant, bar and kitchen printers for the fast-paced hospitality sector



Payment

Compact Bluetooth POS and mobile receipt printers for Mobile Payment applications



Entertainment

Versatile and reliable ticket printers for fast customer throughput



Transport

Star offers a full range of fast and accurate printing solutions for mass transit



Logistics

Wide range of direct thermal label printers for supply chain and logistics



Industry

Reliable printing products for use in demanding industrial environments

[BACK TO CONTENTS](#)

ABOUT TOSHIBA

Toshiba linerless label is a tape with adhesive on the backside and silicone on top. This material is flexible and sustainable compared to conventional direct thermal label materials. But yet, it still offers the same scanning and traceability properties. Simply put, it suits any application in which optimal thermal printability and adhesion combined with a clean cut are required.

Advantages of switching to linerless labels

- Toshiba's label-saving technology reduces label length, eliminating waste and saving money.
- With up to 30% more linerless labels per roll you can increase print time, reduce roll changes and lower storage requirements.

BV-420D-GL

**TOSHIBA'S MOST ADVANCED
DESKTOP PRINT TECHNOLOGY**



Visit the site

Printing Technology	Direct Thermal
Resolution	203 dpi
Size (WxDxH)	174 x 288 x 173 mm
Print Speed (Max)	7 ips

This linerless version enables the printer to print on adhesive labels with no backing paper reducing waste and keeping the working environment safe and clean. With a broad set of standard interfaces and optional Wi-Fi and/or Bluetooth, the BV420D-GL02 easily integrates into even the most complex IT environments.

Specification sheet

Trade-in. Trade Up.

Swap your existing industrial printer — Toshiba or competitor — for an unmissable discount on a new Toshiba BX400 or BX600 device.

Get in touch to find out more.

Terms and conditions apply. Ends 26.03.26.

Powered by A-BRID — the latest barcode printing technology!



[BACK TO CONTENTS](#)

LINERLESS PRINTERS



ABOUT TSC

Using linerless labels can also help organisations reduce fines. Eliminating liner waste enhances safety and helps comply with OSHA standards by reducing waste material remaining on warehouse floors and work areas during production.



ALPHA 2R

**PRINT RECEIPTS AND TICKETS
ON DEMAND**



[View printer prices](#)

[View accessory prices](#)

Printing Technology	Direct Thermal
Resolution	203 dpi
Size (WxDxH)	89.3 x 56.5 x 134.5 mm
Print Speed (Max)	102 mm/sec

This printer features a high-performance, compact, and affordable mobile receipt printer. It is cost-effective, built for high durability, and comes equipped with important features, and offers a selection of compatible accessories.

[Specification sheet](#)

[Labels & Ribbons](#)

TDM-20

GET YOUR RECEIPTS ANYWHERE



[View printer prices](#)

[View accessory prices](#)

Printing Technology	Direct Thermal
Resolution	203 dpi
Size (WxDxH)	79 x 36.5 x 116 mm
Print Speed (Max)	4 ips

The TDM Series is equipped to operate across different platforms with multiple connectivity options. Its lightweight, durable and flexible design, coupled with ease of operation without sacrifice functionality is especially critical for retail & mobile point of sale (MPOS) applications.

[Specification sheet](#)

[Labels & Ribbons](#)

TDM-30

**INTELLIGENTLY DESIGNED
FOR ON-THE-GO PRINTING**



[View printer prices](#)

[View accessory prices](#)

Printing Technology	Direct Thermal
Resolution	203 dpi
Size (WxDxH)	105 x 49.5 x 116 mm
Print Speed (Max)	4 ips

TSC's new mobile barcode printer line, the TDM Series, is intelligently designed for on-the-go printing. Mobile printing is an excellent solution for any business that needs to print on demand. The TDM Series is equipped to operate across different platforms with multiple connectivity options

[Specification sheet](#)

[Labels & Ribbons](#)

LINERLESS PRINTERS



MB-240T

SMALL FOOTPRINT, BIG IMPACT



[View printer prices](#)

[View accessory prices](#)

Printing Technology	Direct Thermal / Thermal Transfer
Resolution	203 dpi
Size (WxDxH)	248 x 436 x 274 mm
Print Speed (Max)	10 ips

MB240 series of industrial thermal label printers is a new value leader for 4" wide light industrial label printing. Its compact design, quiet operation and fast label throughput is equally at home, in the office or on the shop floor. All-metal construction and die-cast aluminum print mechanism engine withstand the toughest production environments

[Specification sheet](#)

[Labels & Ribbons](#)

DA210/220

COMPACT DESIGN, AFFORDABLE TOTAL COST OF OWNERSHIP



[View printer prices](#)

[View accessory prices](#)

Printing Technology	Direct Thermal
Resolution	203 dpi
Size (WxDxH)	172 x 195 x 165 mm
Print Speed (Max)	6 ips

The DA210/DA220 Series of direct thermal desktop printers are ideal for a wide variety of applications including product marking, point of sale, retail, small office, shipping labels, and other labeling and tag applications at a very competitive price.

[Specification sheet](#)

[Labels & Ribbons](#)



ABOUT ZEBRA

Zebra's Linerless Printers

- Mechanical design – specifically designed for platen rollers and cutters.
- Firmware – includes a rollback feature on mobile printers to unstick media.

Zebra's Linerless Media

- Enhanced performance – developed and tested specifically for Zebra linerless printers.
- Qualitative analysis beyond ANSI*grade testing – includes quantitative evaluation to extend platen and cutter life.

Zebra ZeroLiner

- Built-in premium quality – developed to provide the best customer experience in real-world applications
- Pre-tested materials – tested for solution compatibility.

ZT400 SERIES

A NEW LEVEL OF PERFORMANCE,
VERSATILITY & EASE OF USE



[View printer prices](#)

Printing Technology	Direct Thermal / Thermal Transfer
Resolution	203 dpi, 300 dpi & 600 dpi
Size (WxDxH)	Dependant on variant
Print Speed (Max)	14 ips (ZT411) / 12 ips (ZT421)

Keep your critical operations running efficiently with Zebra's durable ZT400 Series printers. The ZT400 offers the versatility, reliability, and performance to meet your industrial printing needs—today and tomorrow.

[Specification sheet](#)

ZQ310+ SERIES

BIG BUSINESS VALUE AT AN
AFFORDABLE PRICE



[View printer prices](#)

[View accessory prices](#)

Printing Technology	Direct Thermal
Resolution	203 dpi
Size (WxDxH)	Dependant on variant
Print Speed (Max)	4 ips

Whether your workers are printing out price markdown labels on the sales floor or leaving a delivery notice at the customer's doorstep, they need a mobile printer that's fast, flexible and reliable. The ZQ300 Plus Series is the little mobile printer that can do it all.

[Specification sheet](#)

[BACK TO CONTENTS](#)

LINERLESS PRINTERS



ZQ620

MAXIMUM PRODUCTIVITY, EASE OF USE AND MANAGEABILITY



[View printer prices](#)

[View accessory prices](#)

Printing Technology	Direct Thermal
Resolution	203 dpi
Size (LxWxH)	173 x 117 x 84 mm
Print Speed (Max)	4.5 ips

It's easy to set up and maintain the ZQ600 Series with its large display, user-friendly interface and easily customized menu. The display changes color when the printer is paused or in an error state, such as out of media or latch open, so users instantly know what the printer needs to stay up and running.

[Specification sheet](#)

ZQ210

HIGH QUALITY, VALUE-PRICED LINERLESS PRINTER



[View printer prices](#)

Printing Technology	Direct Thermal
Resolution	203 dpi
Size (LxWxH)	118 x 85.5 x 44.5 mm
Print Speed (Max)	2 ips

When it comes to versatility, this printer outshines the competition, allowing you to print multiple types of media and media widths to meet all your printing needs, today and in the future. All the right connectivity options ensure split second pairing with a host mobile device, while USB charging makes it easy to keep the ZQ200 Series charged

[Specification sheet](#)

ZQ620+

PREMIUM MOBILE LABEL AND RECEIPT PRINTER



[View printer prices](#)

Printing Technology	Direct Thermal
Resolution	203 dpi
Size (LxWxH)	173.7 x 117.9 x 76.9 mm
Print Speed (Max)	4.5 ips

The Zebra ZQ620 Plus premium linerless mobile printer offers the fastest, most dependable wireless connections inside the four walls. Enters sleep mode when it is idle, and automatically wakes up the moment the user sends a print job and provides a large display, user-friendly interface and easily customized menu.

[Specification sheet](#)

ZQ511

EXCEPTIONAL DURABILITY FOR THE TOUGHEST ENVIRONMENTS



[View printer prices](#)

Printing Technology	Direct Thermal
Resolution	203 dpi
Size (LxWxH)	150 x 120 x 62 mm
Print Speed (Max)	5ips

The ZQ500 series is the most durable printer on the market, in its class. Pairing additional, best-in-class features with enhanced durability and military-grade design mean these printers can handle serious abuse that other mobile printers can't.

[Specification sheet](#)

LINERLESS PRINTERS



ZQ630+

**INSTANT WAKE-UP OVER WI-FI,
LARGE COLOUR DISPLAY**



[View printer prices](#)

Printing Technology	Direct Thermal
Resolution	203 dpi
Size (LxWxH)	186.7 x 165.1 x 82.5 mm
Print Speed (Max)	4.5 ips

The ZQ600/ZQ600 Plus Series takes Zebra's popular QLn platform and makes it even better—adding advanced technology and innovative design that drive productivity, ease-of-use and manageability to a new level. A large color display takes all the guesswork out of printer status

[Specification sheet](#)

ZQ521

**PRINT IT ALL: RECEIPTS, RFID
TAGS, LABELS AND LINERLESS**



[View printer prices](#)

Printing Technology	Direct Thermal
Resolution	203 dpi
Size (WxDxH)	158 x 155 x 67 mm
Print Speed (Max)	5 ips

Connect everywhere with 802.11ac Wi-Fi and its latest security protocols, plus Bluetooth 4.1 Classic and Low Energy. Power through the longest shift with the high-capacity 3250 mAh PowerPrecision+ battery. Conserve battery life with automatic sleep mode when not in use, and instant wake when a print job is sent.

[Specification sheet](#)

ZD621D

**INVEST IN THE BEST: PREMIUM
FEATURES, UNMATCHED SECURITY**



[View printer prices](#)

Printing Technology	Direct Thermal
Resolution	203 dpi / 300 dpi
Size (LxWxH)	221 x 177 x 151 mm
Print Speed (Max)	8 ips (203dpi) / 6 ips (300dpi)

Don't compromise. Get it all: an innovative new architecture to power our ever expanding printer capabilities and software. Unmatched security that's constantly evolving to safeguard your sensitive data and shield you from cyberattacks. Enhanced features, communication and media-handling options that you can add whenever you're ready

[Specification sheet](#)

ZD611D

**SIMPLE TO SET UP; EASY TO
MAINTAIN**



[View printer prices](#)

Printing Technology	Direct Thermal
Resolution	203 dpi / 300 dpi
Size (LxWxH)	220 x 115 x 151 mm
Print Speed (Max)	8 ips (203dpi) / 6 ips (300dpi)

Technology is constantly advancing and so will ZD611 2-inch printers. They're engineered to power future printing at the highest level with an innovative architecture that can perform more operations simultaneously and evolve with emerging technology.

[Specification sheet](#)

[BACK TO CONTENTS](#)

CITIZEN

CMP-30ii

HANDLES LABELS AND RECEIPTS



[View printer prices](#)

[View accessory prices](#)

Resolution	203 dpi
Size (WxDxH)	120 x 152 x 70mm
Weight	0.6 kg
Print Speed (Max)	100 mm/sec

The CMP-30II shares the same advanced Bluetooth and WiFi technology and tough construction of the smaller CMP-20II mobile printer. This ensures quick and easy printing, with drop-in paper loading and paper out indicators, simple feed paths to eliminate the risk of jamming, and an integral tear bar to cut paper to the required length.

[Specification sheet](#)

TM-L90

SIMPLE DESIGN, INTUITIVE OPERATIONS, LABELS & RECEIPTS



[View printer prices](#)

[View accessory prices](#)

Resolution	203 dpi
Size (WxDxH)	120 x 152 x 70mm
Weight	0.6 kg
Print Speed (Max)	100 mm/sec

The Citizen CMP-30II mobile printer can print receipts and labels up to 3 inches wide. This ensures quick and easy printing, with drop-in paper loading and paper out indicators, simple feed paths to eliminate the risk of jamming, and an integral tear bar to cut paper to the required length.

[Specification sheet](#)

[Labels/Ribbons](#)

CMP-25L

TWO-INCH LABEL PRINTING IN A PORTABLE AND RUGGED DESIGN



[View printer prices](#)

[View accessory prices](#)

Resolution	203 dpi
Size (WxDxH)	100 x 158 x 85mm
Weight	580g
Print Speed (Max)	127 mm/sec

The Citizen CMP-25L portable label printer is designed for use in challenging working environments. Compact and easy to handle, it produces high quality barcode prints. Robust and durable, it can withstand drops of up to 1.8 meters, and has a battery life of an impressive 48 hours. A backlit LCD allows for easy operation and configuration.

[Specification sheet](#)

[Labels/Ribbons](#)

CMP-20II

POWERFUL PORTABLE PRINTING ON THE GO



[View printer prices](#)

[View accessory prices](#)

Resolution	203 dpi
Size (WxDxH)	96 x 136 x 58mm
Weight	0.42 kg
Print Speed (Max)	80 mm/sec

The Citizen CMP-20II mobile receipt printer provides compact and robust printing virtually anywhere, with both Bluetooth and WiFi connectivity. Quick and simple to use, the CPM-20II mobile receipt printer is designed to save you time when printing 2 inch wide mobile receipts.

[Specification sheet](#)

[Labels/Ribbons](#)

[BACK TO CONTENTS](#)

ABOUT EPSON

The TM-m Series receipt printers are engineered with mPOS in mind, featuring a sleek, compact industrial design that seamlessly compliments modern tablets and smart devices.

The TM-m30II-SL is a stylish all-in-one mPOS solution which integrates tablet stand functionality for convenience and space saving, making it an ideal choice for efficient mPOS setups.

- All-new stylish design
- Ideal for on-the-go-use
- Advanced features

TM-P20II

INCREASE PRODUCTIVITY WITH THIS LIGHTWEIGHT PRINTER



[View printer prices](#)

Resolution	203 dpi
Size (WxDxH)	79 x 119.8 x 43.6 mm
Weight	228g
Print Speed (Max)	100 mm/sec

Delivering exceptional performance in a compact, stylish and ultra-light design, the Epson TM-P20II receipt printer is ideal for anyone who needs receipt printing on-the-go. It's even more robust than ever, providing increased impact resistance and protection to IP54 standards. Easily mounts onto a belt, or shoulder carried.

[Specification sheet](#)

TM-P80II

OUTSTANDING FLEXIBILITY, RELIABILITY AND CONNECTIVITY



[View printer prices](#)

Interfaces	Bluetooth, USB Type-C
Size (WxDxH)	105 x 138 x 58 mm
Weight	0.32kg
Battery Life	Bluetooth 47 hrs

Compact, stylish and lighter than ever before, the all-new Epson TM-P80II is the perfect choice for demanding on-the-go environments such as hospitality, as well as in-vehicle applications. Providing increased impact resistance, and protection from dust and water ingress to IP54 standards

[Specification sheet](#)

Honeywell

ABOUT HONEYWELL

From retail floor labels to field service receipts – designed to withstand punishing conditions where dirt, moisture, temperature extremes, and drops are common. Honeywell mobile printers deliver rugged and reliable receipt and label printing, whenever and wherever you need it. Our wide selection of energy-efficient, long-battery-life mobile printers are designed to withstand punishing field conditions where dirt, moisture, temperature extremes, and drops are common.

- Honeywells portable printers provides big productivity gains and reduces errors by enabling workers to print labels at the location they need, so labels can be applied when and where they need to be applied.
- The RPF printer comes with powerful CPU and smart power management – allowing smooth, continuous operation so your workers can work efficiently with less media reloading, battery swaps, and downtime.
- The RPF Series printer prints 25.4mm (1 in) to 104.1 mm (4.1 in) labels/receipts and can accommodate a wide variety of media, including the heavy stock necessary for hang tags and specialty label needs.
- The RPF Series has the latest 802.11 a/b/g/n/ac Wi-Fi capabilities for the best range and fast data communications on your WLAN. It also includes a Bluetooth 5.0 LE radio at no additional charge for when workers are outside of WLAN range or using the printer with a Bluetooth mobile computer.
- Built on Honeywell's software platform, the RPF printer offers IT managers easy integrated device management, a high level of security throughout the entire printer lifespan, and upgrades that allow your printers to be updated with enhanced features.

RL4E

BUILT TO KEEP PACE IN THE BUSIEST PLACES



[View printer prices](#)

[View accessory prices](#)

Resolution	203 dpi
Size (HxWxD)	200 x 166 x 81 mm
Weight	0.98kg
Print Speed (Max)	102 mm/sec

The Honeywell RL4e (105 mm/4.125 in) portable label printer processes shipments quickly, and effectively, helping increase productivity and reduce errors. The rugged printer improves efficiency by allowing the user to print and apply barcode labels directly at the point of application

[Specification sheet](#)

[Labels/Ribbons](#)

LNx3

DURABLE, RUGGED DIRECT THERMAL PRINTER



[View printer prices](#)

Resolution	203 dpi
Size (HxWxD)	117 x 137 x 55 mm
Print Method	Direct Thermal
Print Speed (Max)	1-5 ips

LNx3 mobile label and receipt printer brings the power and reliability of Honeywell printers into a durable, lightweight, direct thermal printer meeting or exceeding industry printer specifications. The large 2.4 inch color screen display streamlines configuration and operation at the touch of a button and is backed up by a fast energy-saving processor.

[Specification sheet](#)

[BACK TO CONTENTS](#)

RP2F

BUILT FOR THE MOST RUGGED ENVIRONMENTS



[View printer prices](#)

Resolution	203 dpi
Size (HxWxD)	160 x 116 x 77 mm
Print Method	Direct Thermal
Print Speed (Max)	1-5 ips

This portable printer provides big productivity gains and reduces errors by enabling workers to print labels at the location they need, so labels can be applied when and where they need to be applied. A powerful CPU and smart power management – allows smooth, continuous operation so your workers can work efficiently.

[Specification sheet](#)

RP4F

EXCEPTIONAL MEDIA AND BATTERY CAPACITY, QUIET OPERATION



[View printer prices](#)

Resolution	203 dpi
Size (HxWxD)	187 x 164 x 77 mm
Print Method	Direct Thermal
Print Speed (Max)	1-5 ips

The RPf Series printer prints 25.4mm (1 in) to 104.1 mm (4.1 in) labels/receipts and can accommodate a wide variety of media, including the heavy stock necessary for hang tags and specialty label needs. Plus, its fast and easy-loading design means fewer interruptions and increased productivity in your application

[Specification sheet](#)

MPD31D

SIMPLE DESIGN, INTUITIVE OPERATIONS, LABELS & PRINTERS

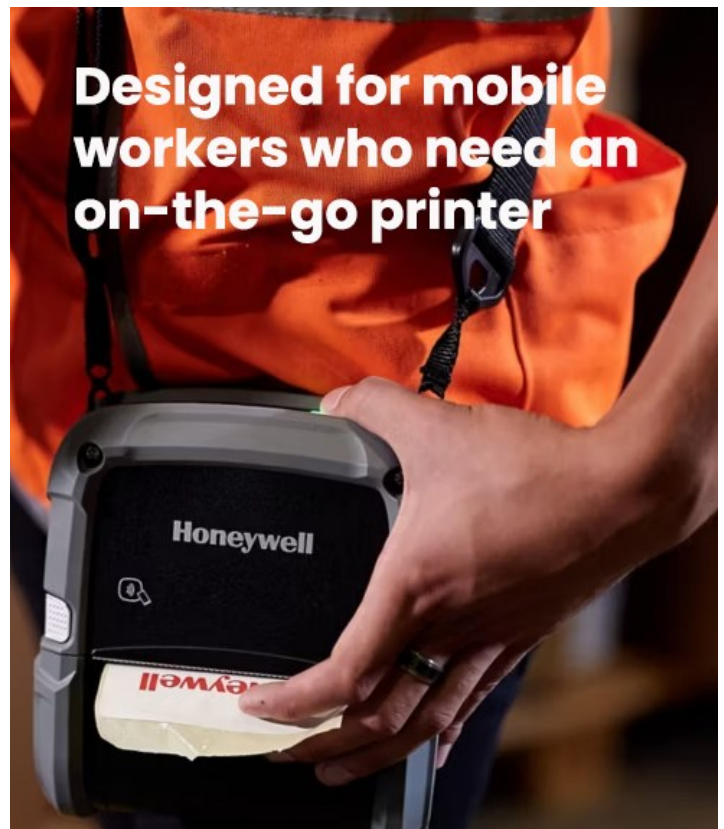


[View printer prices](#)

Resolution	203 dpi
Size (HxWxD)	105 x 108 x 51 mm
Weight	0.4 kg
Print Speed (Max)	90 mm/sec

Designed for active work in retail, manufacturing, logistics and warehousing. It creates receipts or labels with 1D, 2D and QR codes and images at a maximum print speed of 90 mm per second. Thanks to its low weight of just 400 g (with the battery), users carry it around comfortably all day.

[Specification sheet](#)





ABOUT STAR

Receipt and label printing on the go!

Star's range of lightweight and compact Bluetooth mobile printers are easy-to-use with simple drop-in paper loading and long battery life. With wireless "classic" Bluetooth and Bluetooth Low Energy connectivity with auto-pairing, they connect seamlessly to tablets, smartphones and handheld POS and payment devices for accurate receipt and label printing on-the-go.

The range includes 58mm, 80mm, and 112mm wide models with rugged IP54 splash proof design, standard or USB charging and are simple to carry on a belt or shoulder strap. Ideal for Mobile POS and payment, transport ticketing, hospitality and in-vehicle applications.



SM-T300i

DURABLE RUGGED PRINTER, HIGH CONNECTIVITY & FUNCTIONALITY



[View printer prices](#)

[View accessory prices](#)

Resolution	203 dpi
Size (WxDxH)	120 x 131 x 59 mm
Weight	442g with battery
Print Speed (Max)	75 mm/sec

The SM-T300i mobile receipt printer comes ready to go in a complete package, including battery pack, serial connection cable and charging adapter, as well as a practical belt clip.

[Specification sheet](#)

SM-T400i

iOS & ANDROID COMPATIBLE BLUETOOTH RECEIPT PRINTER



[View printer prices](#)

[View accessory prices](#)

Resolution	203 dpi
Size (WxHxD)	151 x 136 x 53 mm
Weight	735g (with battery)
Print Speed (Max)	80 mm/sec

The Star SM-T400i mobile receipt printer allows the user to print 112 mm wide receipt whenever and wherever they need to, and is compatible with all the major operating systems, Apple, Windows, Android and Linux.

[Specification sheet](#)

[BACK TO CONTENTS](#)



SM-L200

DESIGNED SPECIFICALLY FOR
THE MPOS MARKET



[View printer prices](#)

[View accessory prices](#)

Resolution	203 dpi
Size (WxDxH)	83 x 122.5 x 44 mm
Weight	220g
Print Speed (Max)	35 mm/sec

The Star SM-L200 mobile receipt and label printer is an ideal solution for mobile applications. With mobile reception it is well suited for quick and cost-effective connection to Android, Apple iOS and Windows mobile devices. Thanks to Bluetooth 4.0 it can connect to two or more Apple devices.

[Specification sheet](#)

[Labels/Ribbons](#)

SM-230I

NEW GENERATION, SUPER
COMPACT RECEIPT PRINTER



[View printer prices](#)

Resolution	203 dpi
Size (WxHxD)	80 x 114 x 44 mm
Weight	217 g (with battery)
Print Speed (Max)	80 mm/sec

The SM-S230i is suitable for a wide range of mobile printing applications with no configuration changes required when switching between various operating systems. The clerk will be able to use the SM-S230i with an iOS, Android or Windows device with no set up required using its auto detection Bluetooth feature.



Mobile Printers

Portable Bluetooth Receipt and Label Printers.



[BACK TO CONTENTS](#)

Built for performance, designed for efficiency

Best of the best BX410T next generation printer



Plug & print integration

- Ultra-fast direct PDF print comes standard and automatically works.
- Auto-emulation detects multiple printer languages including PDF.
- Print data converter automatically can modify print data without changes on the host system.



Reduced total cost of ownership

- Long-life near edge print heads for 24/7 operations, reducing maintenance and replacement costs.
- Ultra-reliable hardware minimises running costs & downtime with super printer longevity.



Productivity boost

- Real world print speeds of up to 356 mm/second (14 ips) speeds up your labelling processes.
- Extra-long ribbons (600 m or 800 m) reduce the number of times to replace the ribbons.
- Optional ribbon-save technology extends runtime & reduces interventions needed.



Direct & intuitive handling

- Robust 4.3" full colour display ensures easy operation with gloves & in harsh environments.
- QR code- based help function connects users to selected helpdesks, videos, or contact details.
- Web interface: Full printer configuration without the need for additional software.



Flexibility & scalability

- Field upgradable printer options like integrated label cutters, rewinders or peel-off options.
- Adaptable RFID programming with the built-in RFID analyser.



Easily upgrade to label automation

- Transforms into an automated print & apply solution with the APLEX option.
- Quick and easy setup & integration into production environments.
- Saves time & resources for repeating & continuous labelling operations.



ABOUT TOSHIBA

Technology for every workplace, delivering advanced functionality, ease of use and peace of mind. Based on this philosophy the Toshiba Range can handle a multitude of applications across the widest range of markets. From mobile POS or queue busting, through to issuing tickets or receipts at the roadside and cash on delivery for Logistical operations.

- Solid, compact and modern design
- Fast and efficient on the spot labeling for a large array of applications
- Improved productivity thanks to large paper holding capacity
- Easy integration in mobile workflows with multiple connection interfaces
- Advanced LCD display screen with operator information

B-FP2D

**READY WHEN YOU ARE!
SIMPLE TO USE**



[View printer prices](#)

Resolution	203 dpi
Size (WxDxH)	97 x 130 x 69 mm
Weight	460g
Print Speed (Max)	152 mm/sec

Market leading print speeds of up to 6 inches per second, faster processing with an advanced CPU and a rapid boot time, guarantee the Toshiba TEC B-FP2D Printer is ready to print labels and receipts quickly and efficiently at the touch of a button.

[Specification sheet](#)

B-FP3D

CONNECT.INTEGRATE.SIMPLIFY



[View printer prices](#)

[View accessory prices](#)

Resolution	203 dpi
Size (WxDxH)	116 x 150 x 80 mm
Weight	0.7 kg
Print Speed (Max)	152.4 mm/sec

Delivering advanced functionality, ease of use and peace of mind. Adept at handling applications across a wide range of markets, from ticket and receipts at the side of the road, to mobile POS and cash on delivery for logistical operations, this printer really has the technology for every workplace.

[Specification sheet](#)

[Labels/Ribbons](#)

B-EP4DL

**RUGGED ENDURANCE ON THE
MOVE**



[View printer prices](#)

[View accessory prices](#)

Resolution	203 dpi
Size (HxWxD)	145 x 150 x 75 mm
Weight	860g
Print Speed (Max)	105 mm/sec

The Toshiba Tec B-EP4DL mobile label printer combines a very compact and solid body with a very efficient and fast print engine. Designed to resist the tough conditions of mobile use and able to produce large size labels with minimum operations.

[Specification sheet](#)

[Labels/Ribbons](#)



ABOUT TSC

Print receipts and labels on the go and on-demand. Our small, lightweight, and rugged mobile printers with long battery life are made to last the entire workday and efficiently print at the point of application to reduce downtime and increase production. Our mobile printers are capable of printing linerless labels that help reduce waste and boost productivity. A full line of accessories is available.

Rugged Palm Size Design

The TDM Series has been tested to withstand a drop test of 1.8 m without protective case/2.5 m with a protective case as well as MIL-STD-810G military standard for drop tests. It is also rated IP54 for dust and water resistance with the optional protective case.

Support for Various Media Widths

TDM Series can handle media including receipts, selected labels, linerless printing, etc. The media spacer is easy to install and allows for specific media width.

Self-Diagnostic TPH Care Mechanism

TSC TPH Care Mechanism offers an advanced level of auto-detection ensuring the real-time printhead health status. By scanning and detecting bad dots during the entire process of printing, it has been proven to stabilize high-quality printouts consistently and minimize the waste of consumables for maximum cost-effectiveness.

Multiple Connectivity

TDM Series supports USB2.0 + MFi Bluetooth 5.0 + passive NFC tag or USB2.0 + 802.11 a/b/g/n Wi-Fi with Bluetooth 4.2+ passive NFC tag. Passive NFC tag for Bluetooth can quickly connect by one touch.



TDM-30

**INTELLIGENTLY DESIGNED FOR
ON-THE-GO PRINTING**



[View printer prices](#)

[View accessory prices](#)

Resolution	203 dpi
Size (WxHxD)	105 x 116 x 49.5 mm
Weight	0.375 kg
Print Speed (Max)	102 mm/sec

Mobile printing is an excellent solution for any business that needs to print on demand. Equipped to operate across different platforms with multiple connectivity options. Its lightweight, durable and flexible design, coupled with ease of operation without sacrifice functionality is especially critical for retail & mobile point of sale (MPOS) applications.

[Specification sheet](#)

[Labels/Ribbons](#)

TDM-20

**GET YOUR RECEIPTS ANYWHERE,
ANYTIME**



[View printer prices](#)

[View accessory prices](#)

Resolution	203 dpi
Size (WxHxD)	79 x 116 x 36.5 mm
Weight	0.215 kg
Print Speed (Max)	102 mm/sec

The TDM-20 portable printer series is equipped to operate across different platforms with multiple connectivity options. Its lightweight, durable and flexible design, coupled with ease of operation without sacrifice functionality is especially critical for retail & mobile point of sale (MPOS) applications.

[Specification sheet](#)

[Labels/Ribbons](#)

[BACK TO CONTENTS](#)

ALPHA-3R

**SIMPLIFY YOUR EVERYDAY
MOBILE PRINTING NEEDS**



[View printer prices](#)

[View accessory prices](#)

Resolution	203 dpi
Size (WxHxD)	116 x 148 x 70 mm
Weight	0.55 kg
Print Speed (Max)	102 mm/sec

TSC's Alpha 3R mobile receipt printer is cost-efficient and highly durable. The Alpha-3R is a comfortable, light-weight printer capable of working with any mobile printing application where you need quick, simple receipts/labels on demand.

[Specification sheet](#)

[Labels/Ribbons](#)

ALPHA-2R

**COMPACT AFFORDABLE 2"
MOBILE PRINTER**



[View printer prices](#)

[View accessory prices](#)

Resolution	203 dpi
Size (WxHxD)	89.3 x 134.5 x 56.5 mm
Weight	0.35 kg
Print Speed (Max)	102 mm/sec

Print receipts and tickets on demand and on the go with TSC's Alpha-2R mobile 2-inch receipt printer. The Alpha-2R is TSC's smallest and most affordable mobile receipt printer. Whilst cost effective, the Alpha-2R is still equipped with important basic features and offers a selection of competitive accessories.

[Specification sheet](#)

[Labels/Ribbons](#)

TDM-30

**INTELLIGENTLY DESIGNED FOR
ON-THE-GO PRINTING**



[View printer prices](#)

[View accessory prices](#)

Resolution	203 dpi
Size (WxHxD)	105 x 116 x 49.5 mm
Weight	0.375 kg
Print Speed (Max)	102 mm/sec

Mobile printing is an excellent solution for any business that needs to print on demand. Equipped to operate across different platforms with multiple connectivity options. Its lightweight, durable and flexible design, coupled with ease of operation without sacrifice functionality is especially critical for retail & mobile point of sale (MPOS) applications.

[Specification sheet](#)

[Labels/Ribbons](#)

TDM-20

**GET YOUR RECEIPTS ANYWHERE,
ANYTIME**



[View printer prices](#)

[View accessory prices](#)

Resolution	203 dpi
Size (WxHxD)	79 x 116 x 36.5 mm
Weight	0.215 kg
Print Speed (Max)	102 mm/sec

The TDM-20 portable printer series is equipped to operate across different platforms with multiple connectivity options. Its lightweight, durable and flexible design, coupled with ease of operation without sacrifice functionality is especially critical for retail & mobile point of sale (MPOS) applications.

[Specification sheet](#)

[Labels/Ribbons](#)



RE310

**ENGINEERED FOR DURABILITY
AND ADAPTABILITY**



[View printer prices](#)

Resolution	203 dpi
Size (WxHxD)	115 x 125 x 63 mm
Weight	440g
Print Speed (Max)	Up to 4 ips

The TSC RE310 3-Inch Performance Mobile Printer is engineered for durability and adaptability in demanding environments. Its robust design features rubber over-molded protection, an IP54 certification for dust and water resistance, and the ability to withstand drops from 1.5 meters and tumbles from 1 meter, ensuring reliable performance.

[Specification sheet](#)

ALPHA-40L

**INTELLIGENT LABEL PRINTING
FOR ENTERPRISE PROFESSIONALS**



[View printer prices](#)

Resolution	203 dpi
Size (WxHxD)	160 x 191 x 79 mm
Weight	985g
Print Speed (Max)	5 ips

The Alpha-40L printers are user-friendly, heavy-duty and drop-resistant. The new Mobile Barcode Printers propel you into the next generation of smart, enhanced technology solutions for industrial-grade label printing applications.

[Specification sheet](#)

ALPHA-30L

**HIGH PERFORMANCE AND
RUGGED DESIGN**



[View printer prices](#)

Resolution	203 dpi
Size (WxDxH)	117 x 173 x 79 mm
Weight	745g
Print Speed (Max)	5 ips

The Alpha-30L printers are user-friendly, heavy-duty and drop-resistant. The new Mobile Barcode Printers propel you into the next generation of smart, enhanced technology solutions for industrial-grade label printing applications.

[Specification sheet](#)

ALPHA-4L

**RUGGED & RELIABLE DELIVERING
LABELS WHENEVER NEEDED**



[View printer prices](#)

[View accessory prices](#)

Resolution	203 dpi
Size (WxHxD)	160 x 191.6 x 79 mm
Weight	1.1 kg
Print Speed (Max)	102 mm/sec

The TSC Alpha-4L 4-inch (102 mm) direct thermal light-weight portable label printer features a rugged design and reliable performance. It will continue to operate long after other printers have failed, which is why, like all TSC-built printers, it is backed up with a standard two-year warranty.

[Specification sheet](#)

[Labels/Ribbons](#)

[BACK TO CONTENTS](#)



ABOUT ZEBRA

Zebra mobile printers increase employee productivity and accuracy by enabling portable printing of barcode labels, receipts and RFID tags at the point of application. Take your labeling on the go with wireless portable label printers, designed for convenient and efficient printing of high-quality labels anywhere and anytime you need.

We offer a handheld mobile printer at every price point for every industry and versatile accessories for a complete portable solution.

Key features

- Print Width: 2 in. 3 in & 4in Versions
- Print Technology: Direct Thermal
- Print Speed: Up To 5 ips (127 mm/ P-Sec)
- Androids Largest Trade Customer Worldwide
- Easy Set Up & Configuration Tools
- Print Resolution: 203 dpi (8 dot/mm)

ZQ620

**ADVANCED PLATFORM
GROWS WITH YOUR BUSINESS**



[View printer prices](#)

[View accessory prices](#)

Resolution	203 dpi
Size (LxWxH)	173 x 117 x 84mm
Weight	0.73 kg
Print Speed (Max)	115 mm/sec

The Zebra ZQ620 Mobile Label Printer takes Zebra's popular QLn platform and makes it even better. It adds advanced technology and innovative design that drive productivity, ease-of-use and manageability to a new level.

[Specification sheet](#)

[Labels/Ribbons](#)

ZQ630

**MAXIMUM PRODUCTIVITY IN
AN EASY TO USE PRINTER**



[View printer prices](#)

[View accessory prices](#)

Resolution	203 dpi
Size (LxWxH)	187 x 165 x 82.5 mm
Weight	1.10 kg
Print Speed (Max)	115 mm/sec

Print labels and receipts on the go with the Zebra ZQ630 mobile printer. With new advanced technology and innovative design, this Zebra label printer has improved inventory management, efficiency and productivity. Evolved from the already popular Zebra QLn platform, the ZQ630 takes the lead in printer wireless technology

[Specification sheet](#)

[Labels/Ribbons](#)



ZQ511

EXCEPTIONAL DURABILITY AND RELIABILITY



[View printer prices](#)

[View accessory prices](#)

Resolution	203 dpi
Size (LxWxH)	150 x 120 x 62 mm
Weight	0.63 kg
Print Speed (Max)	127 mm/sec

The Zebra ZQ511™ mobile printer is one of the most durable mobile printers on the market. Pairing additional, best-in-class features with enhanced durability and military-grade design mean these printers can handle serious abuse that other mobile printers can't.

[Specification sheet](#)

[Labels/Ribbons](#)

ZQ220+

HIGH-QUALITY VALUE-PRICED MOBILE PRINTER



[View printer prices](#)

[View accessory prices](#)

Resolution	203 dpi
Size (LxWxH)	129.8 x 114.4 x 58.9 mm
Weight	390g
Print Speed (Max)	2 ips

You're looking for a value-priced mobile printer—but you don't want to compromise on features. The Zebra ZQ220 Plus mobile printer, offering the perfect balance of cost, quality, versatility, durability and wearability. Prints receipts and labels in multiple widths—including 2-inch and 3-inch.

[Specification sheet](#)

ZQ610

PREMIUM FEATURES FOR MAXIMUM PRODUCTIVITY



[View printer prices](#)

[View accessory prices](#)

Resolution	203 dpi
Size (LxWxH)	165 x 89 x 70 mm
Weight	0.6 kg
Print Speed (Max)	115 mm/sec

Maximise employee productivity and accuracy with the Zebra ZQ610. With Bluetooth and wireless connections and leading battery technology, workers can print barcodes, receipts and labels on-the-spot in almost any environment. The ZQ610 is perfect for inventory management or customer service.

[Specification sheet](#)

[Labels/Ribbons](#)

ZQ320

MORE VERSATILITY FOR MORE VALUE



[View printer prices](#)

[View accessory prices](#)

Resolution	203 dpi
Size (LxWxH)	130 x 117.7 x 49.5 mm
Weight	0.43 kg
Print Speed (Max)	100 mm/sec

With the Zebra ZQ320 mobile receipt printer series you can print receipts, labels, or both. with the most charging options for maximum flexibility to meet the scalability of business needs – including large or small deployment, in-vehicle and at-home charging solutions.

[Specification sheet](#)

[Labels/Ribbons](#)

[BACK TO CONTENTS](#)

MOBILE PRINTERS



ZQ210

**HIGH QUALITY VALUE PRINTER
FOR RECEIPTS AND LABELS**



[View printer prices](#)

[View accessory prices](#)

Resolution	203 dpi
Size (LxWxH)	118 x 85.5 x 44.5 mm
Weight	265 G
Print Speed (Max)	60 mm/sec

The Zebra ZQ210 all-in-one mobile receipt and label printer is ideal for the work areas in retail, hospitality, industry and order picking. It produces labels and receipts in a print quality of 203 dpi and with a maximum print speed of up to 60 mm/sec.

[Specification sheet](#)

ZQ521

**TOUGH. RELIABLE. BUILT TO
ENDURE**



[View printer prices](#)

[View accessory prices](#)

Resolution	203 dpi
Size (LxWxH)	158 x 155 x 67mm
Weight	0.79 kg
Print Speed (Max)	127 mm/sec

The Zebra ZQ521 rugged mobile printer is one of the most durable printers on the market. Engineered and certified to withstand significant drops, tumbles, dirt, liquids, environmental extremes and more that are common in mobile workplaces.

[Specification sheet](#)

[Labels/Ribbons](#)

ZQ310

**ONE PRINTER—DUAL CAPABILITIES,
RECEIPTS AND LABELS**



[View printer prices](#)

[View accessory prices](#)

Resolution	203 dpi
Size (LxWxH)	130 x 93.5 x 49.5 mm
Weight	0.37 Kg
Print Speed (Max)	100 mm/sec

The Zebra ZQ310 mobile receipt printer is fast, flexible, reliable and compact. Whether your workers are printing out price markdown labels on the sales floor or leaving a delivery notice at the customer's doorstep the ZQ310 can do it all.

[Specification sheet](#)

[Labels/Ribbons](#)

TOSHIBA

ABOUT TOSHIBA

Toshiba Printers for Label Printing:

Toshiba printers are commonly used for the initial label printing step, where they print the visual elements onto the label material.

RFID Printing Process:

RFID tags and labels consist of a microchip and an antenna embedded within the label material. To create a finished RFID label, you first need to print the visual part of the label (text, barcodes, etc.).

Then, you encode the RFID chip with the necessary data using an RFID encoder.

BA-410T

THE EVOLUTION OF BARCODE PRINTING

[Visit the site](#)



Printing Technology	Thermal Transfer / Direct Thermal
Resolution	203 dpi / 300 dpi
Size (WxDxH)	245 x 350 x 332 mm
Print Speed (Max)	8 ips

The Toshiba BA410T label printer is the first in the next generation of products launched with an entirely new software platform. Built on the renowned mechanical platform of its predecessor, the BA400 series retains all the superb reliability and robustness.

[Specification sheet](#)

[BACK TO CONTENTS](#)

ABOUT TSC

Our RFID printers offer solutions for a wide range of applications from enterprise-level desktop printers to high-volume industrial printers.

We offer high-performance features, including 4-inch and 6-inch print widths, the ability to print on standard RFID labels and on-metal tags and up to 600 dpi for small labels.

Printronix Auto ID RFID printers are enhanced to include high-speed encoding, high-memory encoding, and RFID upgrade kits.

Our printers are easy to use, easy to calibrate and offer compatibility with PrintNet Enterprise remote printer management software.

ALPHA-40L



RELIABLE RFID SOLUTION ON THE GO

[Visit the site](#)

Printing Technology	Direct Thermal
Resolution	203 dpi
Size (WxDxH)	160 x 79 x 191 mm
Print Speed (Max)	5 ips

The Alpha-40L RFID is RAIN UHF compliant, user-friendly, heavy-duty and drop-resistant, supporting next generation smart, RFID-enabled solutions for printing and encoding RFID labels in advanced track and trace applications to boost productivity.

T6000e 4"

RELIABLE OPERATION, QUALITY CONSTRUCTION, GREAT VALUE



[Visit the site](#)

Printing Technology	Thermal Transfer / Direct Thermal
Resolution	203, 300 & 600 dpi
Size (WxDxH)	297.2 x 520.7 x 330.2 mm
Print Speed (Max)	14 ips

The T6000e industrial printer series sets the standard for productivity and versatility in fast-paced environments where speed, exceptional print quality and advanced features such as RFID and real time barcode verification are needed.

[Specification sheet](#)

T4000 4"

SMALL, FAST AND READY TO BOOST PRODUCTIVITY



[Visit the site](#)

Printing Technology	Thermal Transfer / Direct Thermal
Resolution	203 & 300 dpi
Size (WxDxH)	264 x 455 x 276 mm
Print Speed (Max)	10 ips / 7 ips

The T4000 light industrial printer series is our most compact and affordable industrial printer with the ability to print 5,000 labels a day at speeds of up to 10-inches per second. The 4-inch models come equipped with high-end features and remote printer management capabilities.

[Specification sheet](#)



ZT620R

STRONG, SMART AND SCALABLE RFID ENCODING



[View printer prices](#)

Printing Technology	Thermal Transfer / Direct Thermal
Resolution	203 dpi / 300 dpi / 600 dpi
Size (LxWxH)	505 x 341.45 x 395.68 mm
Print Speed (Max)	12 ips

ZT600 Series printers combine industrial durability and user-friendly features with future-proof adaptability—including a factory—or field-installable RFID encoder—to meet your evolving needs for years to come.

[Specification sheet](#)

ZT411

KEEP YOUR CRITICAL OPERATIONS RUNNING



[View printer prices](#)

[View accessory prices](#)

Printing Technology	Thermal Transfer / Direct Thermal
Resolution	203 dpi / 300 dpi / 600 dpi
Size (WxDxH)	269 x 495 x 324 mm
Print Speed (Max)	14 ips / 10 ips / 4 ips

The ZT400 Series, ZT411 RFID industrial printer/encoder pair UHF RFID capabilities with proven durability to help keep your critical operations running efficiently. Optimised to accurately and efficiently print and encode labels for today's item-level tracking applications, the ZT400 Series RFID gives you enhanced tracking capabilities and deeper visibility.

[Specification sheet](#)

[Labels/Ribbons](#)

ZD621R

PREMIUM FEATURES, MAXIMUM CAPABILITY



[View printer prices](#)

[View accessory prices](#)

Printing Technology	Thermal Transfer
Resolution	203 dpi / 300 dpi
Size (WxDxH)	202 x 267 x 192 mm
Print Speed (Max)	8 ips / 6 ips

Expect the best with the ZD621R 4-inch desktop printer / encoder. Super reliable and easy-to-use, this all in 1 compact desktop printer delivers premium RFID printing / encoding and boasts best-in-class features and accessories for a flawless printing experience.

[Specification sheet](#)

[Labels/Ribbons](#)

ZQ630

MAXIMUM PRODUCTIVITY, EASE OF USE & MANAGEABILITY



[View printer prices](#)

[View accessory prices](#)

Printing Technology	Direct Thermal
Resolution	203 dpi
Size (WxDxH)	165 x 187 x 82.5 mm
Print Speed (Max)	4.5 ips

With new advanced technology and innovative design, this Zebra label printer has improved inventory management, efficiency and productivity. Evolved from the already popular Zebra QLn platform, the ZQ630 takes the lead in printer wireless technology

[Specification sheet](#)

[Labels/Ribbons](#)

[BACK TO CONTENTS](#)

RFID PRINTERS



ZD611R

RFID CAPABILITIES, WITH UNMATCHED SECURITY

[Visit the site](#)



Printing Technology	Thermal Transfer / Direct Thermal
Resolution	203 dpi / 300 dpi
Size (WxDxH)	138.7 x 242.9 x 169.2 mm
Print Speed (Max)	8 ips / 6 ips

The compact Zebra ZD611R RFID Desktop Printer is a high-quality 2" printer and offers various functions and technologies of the next generation. As such, it also impresses with high flexibility, reliability and future security.

[Specification sheet](#)

ZT231

AFFORDABLE, INDUSTRIAL RFID PRINTING/ENCODING

[View printer prices](#)

[View accessory prices](#)



Printing Technology	Thermal Transfer / Direct Thermal
Resolution	203 dpi / 300 dpi
Size (WxDxH)	241 x 432 x 279 mm
Print Speed (Max)	12 ips / 8 ips

The Zebra ZT231 RFID Industrial Label Printer is an industrial printer that won't break the bank. Offering just the right features and functionality at just the right price, the ZT231 is redefining value. Drive your business forward with fast print speeds and a large colour touchscreen—all within a space-saving footprint.

[Specification sheet](#)

[Labels/Ribbons](#)

ZQ521

EXCEPTIONAL DURABILITY AND RELIABILITY

[View printer prices](#)

[View accessory prices](#)



Printing Technology	Direct Thermal
Resolution	203 dpi
Size (WxDxH)	155 x 158 x 67 mm
Print Speed (Max)	5 ips

The Zebra ZQ521 rugged mobile printer is one of the most durable printers on the market. Engineered and certified to withstand significant drops, tumbles, dirt, liquids, environmental extremes and more that are common in mobile workplaces.

[Specification sheet](#)

[Labels/Ribbons](#)

ZT610R

STRONG, SMART AND SCALABLE RFID ENCODING

[View printer prices](#)



Printing Technology	Direct Thermal / Thermal Transfer
Resolution	203 dpi, 300 dpi and 600 dpi
Size (LxWxH)	505 x 268.2 x 395.68 mm
Print Speed (Max)	14 ips

Need technology solutions that will grow with your business? The ZT600 Series printers combine industrial durability and user-friendly features with future-proof adaptability—including a factory—or field-installable RFID encoder—to meet your evolving needs for years to come.

[Specification sheet](#)

CITIZEN

CT-S601II

FAST POWERFUL POS PRINTING



[View printer prices](#)

[View accessory prices](#)

Printing Technology	Direct Thermal
Resolution	203 dpi
Size (WxDxH)	145 x 192 x 148 mm
Print Speed (Max)	220 mm/sec

The CL-S631II offers the finest resolution, providing 300 dpi for the CT-S601II is our full-function mid-range POS printer. The CT-S601II incorporates an integrated power supply, self-retracting cutter and a top paper exit.

[Specification sheet](#)

[Labels/Ribbons](#)

CT-S751

ULTRA-FAST POS PRINTER WITH UNDER COUNTER MOUNTING



[Visit the site](#)

Printing Technology	Direct Thermal
Resolution	203 dpi
Size (WxDxH)	125 x 170 x 108 mm
Print Speed (Max)	350 mm/sec

The CT-S751 3-inch, front-loading POS printer produces direct thermal prints at an outstanding 350mm/sec in 203 dpi. Its modern design, premium functionality and seamless integration into mPOS systems makes it the perfect printer to meet the challenges of retail and hospitality industries.

[Specification sheet](#)

CT-S310II

ENVIRONMENTALLY FRIENDLY, COST CONSCIOUS PRINTING



[View printer prices](#)

[View accessory prices](#)

Printing Technology	Direct Thermal
Resolution	203 dpi
Size (WxDxH)	140 x 195 x 132 mm
Print Speed (Max)	160 mm/sec

The Citizen CT-S310II thermal receipt printer features an ENERGY STAR® power supply, paper-save function, halogen-free housing and packaging produced from recycled materials, making it an environmentally friendly printer.

[Specification sheet](#)

[Labels/Ribbons](#)

CT-E301

MODERN HIGH-PERFORMANCE TOP-EXIT PRINTING



[View printer prices](#)

Printing Technology	Direct Thermal
Resolution	203 dpi
Size (WxDxH)	108 x 125 x 165 mm
Print Speed (Max)	250 mm/sec

Protected by innovative self-protective housing the CT-E301 is the ultimate printer that protects your printing station and suppresses bacteria. Perfect for environments where cleanliness and hygiene are key.

[Specification sheet](#)

[BACK TO CONTENTS](#)

CT-S651II

**FAST, POWERFUL POS
PRINTING WITH FRONT EXIT**



[View printer prices](#)

[View accessory prices](#)

Printing Technology	Direct Thermal
Resolution	203 dpi
Size (WxDxH)	145 x 192 x 148 mm
Print Speed (Max)	220 mm/sec

Featuring a front paper exit, the CT-S651II shares the same high level of specification as our CT-S601II POS printer. With print speeds of up to 220mm/sec and high resolution output from a tough, long-life thermal printhead, the CT-S651II also incorporates an integrated power supply and a self-retracting cutter.

[Specification sheet](#)

[Labels/Ribbons](#)

CT-S751

**ULTRA-FAST POS PRINTER WITH
UNDER COUNTER MOUNTING**



[Visit the site](#)

Printing Technology	Direct Thermal
Resolution	203 dpi
Size (WxDxH)	125 x 170 x 108 mm
Print Speed (Max)	350 mm/sec

The CT-S751 3-inch, front-loading POS printer produces direct thermal prints at an outstanding 350mm/sec in 203 dpi. Its modern design, premium functionality and seamless integration into mPOS systems makes it the perfect printer to meet the challenges of retail and hospitality industries.

[Specification sheet](#)

CT-S4500

**COST-EFFECTIVE POS PRINTING,
PRECISE DOCUMENT SCALING**



[Visit the site](#)

Printing Technology	Direct Thermal
Resolution	203 dpi
Size (WxDxH)	170 x 216 x 151 mm
Print Speed (Max)	200 mm/sec

Superior performance and reliability with dynamic functionality. A compact and functional printer with stylish design and market-leading print speed that's been meticulously designed to serve across multiple applications.

[Specification sheet](#)

CT-E301

**MODERN HIGH-PERFORMANCE
TOP-EXIT PRINTING**



[View printer prices](#)

Printing Technology	Direct Thermal
Resolution	203 dpi
Size (WxDxH)	108 x 125 x 165 mm
Print Speed (Max)	250 mm/sec

Protected by innovative self-protective housing the CT-E301 is the ultimate printer that protects your printing station and suppresses bacteria. Perfect for environments where cleanliness and hygiene are key.

[Specification sheet](#)

CITIZEN

CT-E651

**SOPHISTICATED AND FAST,
HIGH PERFORMANCE PRINTING**



[View printer prices](#)

[View accessory prices](#)

Printing Technology **Direct Thermal**

Resolution **203 dpi**

Size (WxDxH) **125 x 170 x 108 mm**

Print Speed (Max) **300 mm/sec**

Quick and convenient, the 300mm/s, front-exit CT-E651 is perfect for hospitality and retail alike. The front exit for hospitality protects the mechanism from spills and crumbs. In retail, the compact footprint fits perfectly beneath all-in-one retail systems or alongside a cash drawer - after all it is the same height.

[Specification sheet](#)

[Labels/Ribbons](#)

CT-E351

**STYLISH HIGH-PERFORMANCE
PRINTING**



[View printer prices](#)

[View accessory prices](#)

Printing Technology **Direct Thermal**

Resolution **203 dpi**

Size (WxDxH) **125 x 170 x 108 mm**

Print Speed (Max) **250 mm/sec**

The sophisticated CT-E351 is a compact POS printer that features a unique and contemporary design. It fits seamlessly in small spaces and features front exit printing at a resolution of 203 dpi for receipts. With an impressive print speed of 250mm per second, the CT-E351 is an essential entry class printer for users who value modern aesthetics

[Specification sheet](#)

[Labels/Ribbons](#)

CT-S251

**STYLISH AND FLAWLESS POS
PRINTERS**



[View printer prices](#)

[View accessory prices](#)

Printing Technology **Direct Thermal**

Resolution **203 dpi**

Size (WxDxH) **108 x 165 x 108 mm**

Print Speed (Max) **300 mm/sec**

The Citizen CT-S251 pos printer comes in two colours, black and white, and its eye catching design make it perfect for use in high class restaurants or boutiques.

[Specification sheet](#)

[Labels/Ribbons](#)

CT-S2000

**FAST, TOUGH AND EASY TO
USE RECEIPT PRINTER**



[View printer prices](#)

[View accessory prices](#)

Printing Technology **Direct Thermal**

Resolution **203 dpi**

Size (WxDxH) **147 x 207 x 147 mm**

Print Speed (Max) **220 mm/sec**

With its unique high-speed memory the CT-S2000 thermal printer is capable of printing at speeds up to 220 mm/sec. Built for long life and tough use, the CT-S2000 features an innovative Spill-Shield™ design to keep out moisture, dirt and debris.

[Specification sheet](#)

[Labels/Ribbons](#)

[BACK TO CONTENTS](#)

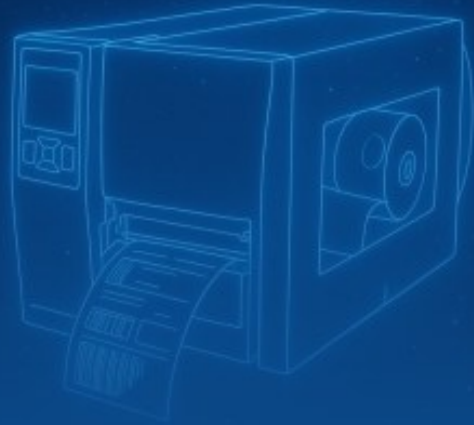


Smarter Printing. Streamlined Operations.

Discover the TSC Auto ID Advantage

Whether you're running a busy warehouse, managing inventory in retail, or tracking assets in healthcare or manufacturing, your printing solution shouldn't slow you down - it should keep you moving. At TSC Auto ID, we deliver powerful, reliable, and easy-to-use printing solutions that help businesses like yours work smarter, faster, and more efficiently.

From desktop to mobile, RFID to linerless, our printers are designed to handle the real-world demands of your operation—no matter the size, speed, or environment.



Desktop Printers - Compact. Powerful. Ready to work.

Perfect for everyday labelling needs in retail, healthcare, and back-office settings.



TH & DH Series

Dual gear design for enhanced durability and longer printer life – built to handle heavier workloads than most entry-level models.



DA Series

Versatile media handling with a compact footprint – direct thermal printer with big printer capability in a small space.



TC Series

Industrial-grade performance in a desktop body – fast print speeds and rugged housing rarely seen at this size.



T800

Compact, high-speed thermal printer with RFID, remote management, and enterprise-grade features for critical labelling.



TE Series

Modular design with replaceable print mechanism – ideal for custom kiosk or embedded applications.

Easy to install and operate, with crisp print quality and a compact footprint.

Mobile Printers - Print anywhere. Move everywhere.

On-the-go printing made simple for field teams, warehouse staff, and mobile workers.



Alpha Series

Military-grade drop and IP rating with advanced connectivity – one of the most rugged mobile printers on the market with full suite of wireless options.



TDM Series

Longest battery life in its class – keeps workers productive all shift long with minimal downtime.



RE Series

Ultra-lightweight for retail and hospitality use – designed for customer-facing environments without compromising durability.

Durable, lightweight, and built with fast wireless connectivity.

MODELS TO KNOW

MODELS TO KNOW

Industrial Printers - Built for volume. Engineered for uptime.

Ideal for high-speed, high-volume environments like manufacturing and logistics.



T4000

Industrial power in a small footprint – reliable, high-speed thermal printer designed for mid-volume applications requiring mission-critical performance and RFID options.



T6000e

Industry-leading RFID encoding and DOV-2D barcode inspection in one printer – automates quality control like no other.



T8000

Operates flawlessly in extreme environments (cold storage ready) – one of the few printers designed for sub-zero operations without heaters.



MH Series

Colour touchscreen with customisable UI – simplifies operation and reduces training time, even in large fleets.



ML Series

Compact industrial powerhouse – smaller footprint than typical industrial printers without sacrificing performance.



MB Series

Linerless printing support in a compact, robust design – award-winning sustainability and space-saving innovation.

Advanced features like RFID, linerless, and barcode inspection available.

Linerless Printers - No liner. No waste. No compromise.

Eco-friendly and efficient, linerless printing reduces downtime and environmental impact.



MB241T Linerless

Winner of the Red Dot Design Award for innovation – smart, clean, and sustainable printing with advanced linerless media handling.



Alpha-30L/40L Linerless

Rugged mobility meets waste-free printing – reduces waste on the go without sacrificing speed or durability.



DA & DH Series

Economical linerless printing for low- to mid-volume applications – perfect entry into sustainable labelling.

Save space, cut waste, and speed up operations.

Print Engines - The brains behind automation.

Reliable, high-speed printing for automated labelling systems.



PEX-2000 Series

Up to 18 ips print speed with pinpoint precision – one of the fastest, most precise print engines for automation systems.

Integrates easily with your existing systems for seamless print-and-apply performance.

Discover the TSC Auto ID Advantage

- Trusted worldwide for quality and reliability
- Solutions for every industry: Retail, Manufacturing, Logistics, Healthcare
- Future-ready features: RFID, linerless, mobile computing
- Backed by local support and global expertise
- Easy to integrate, easy to maintain, and built to last

Let's Make Labelling Easier. Get in touch with Supply Line ID today to find the right TSC Auto ID printer for your business needs.

MODELS TO KNOW

MODELS TO KNOW

MODELS TO KNOW

EPSON®

Seiko Epson Corporation celebrated its 80th anniversary in 2022. We would like to express sincere gratitude to our many customers and stakeholders for their support.

Located near the shore of Lake Suwa, Epson embarked on its journey as a watch parts manufacturer. The company's founder pledged never to pollute Lake Suwa, and we continue to honor his pledge to this day.

We at Epson have always exercised creativity and challenged ourselves to deliver products and services that exceed the expectations of our customers around the world by drawing on the efficient, compact, and precision technologies we have developed and refined since the company was founded in 1942.

In March 2021, we updated our corporate vision, Epson 25, and are now operating under Epson 25 Renewed, which defines "achieving sustainability and enriching communities" as our aspirational goal.

In the past, we sought to use our strong technologies to create innovative products. Going forward, we will also look to wield our technologies to solve societal issues, focusing particularly on overcoming global environmental challenges.

I believe that our purpose as a company is to contribute to society and to employee happiness. I also believe that the two are inseparable. Taking care of our employees and contributing to society will generate confidence and pride internally that will drive us to further contribute to society.

We will continue manufacturing products that solve societal issues as we contribute to achieving sustainability and enriching communities.

Find the best mPOS solution for your business

We have solutions that easily connect with tablet and mobile devices and allow you to print receipts from anywhere in store, as well as offering broad OS support.

We also understand the ever-changing demands of today's hospitality environments, and how more efficient mPOS is essential to customer satisfaction and your business growth.

Whatever your business challenges, Epson has smart, functional and stylish mPOS solutions to improve customer service, as well as make your lives a little easier.

EPSON®

Picking a printer is a super-speedy process with a little help from Usain.





ABOUT EPSON

Our point-of-sale printer range is designed to streamline business operations in retail, hospitality, and other sectors, offering a variety of innovative features to enhance your receipt printing.

Features:

- Thermal POS printer
- Affordable POS receipt printer
- Fast print speeds
- Modern and feature rich
- Compact and stylish
- USB, Wi-Fi and Bluetooth

TM-M30III

ULTRA COMPACT RECEIPT PRINTER



[Visit the site](#)

Printing Technology	Direct Thermal
Resolution	203 dpi
Size (WxDxH)	127 x 127 x 127 mm
Print Speed (Max)	300 mm/sec

With an all-new, highly compact, super-sleek design, which reflects today's demand for a clean and modern aesthetic, the TM-m30III is also robust and reliable, with a range of connectivity options.

[Specification sheet](#)

TM-P20II

ULTRA COMPACT AND LIGHT MOBILE RECEIPT PRINTER



[Visit the site](#)

Printing Technology	Direct Thermal
Resolution	203 dpi
Size (WxDxH)	79 x 119.8 x 43.6 mm
Print Speed (Max)	100 mm/sec

Ultra compact receipt printer that weighs only 228g and fits into the palm of your hand. It delivers all the features you need to print anywhere, anytime. Fastest printing in its class with speeds up to 100mm/second, flexible connectivity options, a compact design with an IP54 rating.

[Specification sheet](#)

TM-U220BII

EASY TO USE IMPACT PRINTER



[Visit the site](#)

Printing Technology	Dot Matrix
Resolution	203 dpi
Size (WxDxH)	160 x 248 x 139 mm
Print Speed (Max)	4.7 ips

The TM-U220II is a robust, high performance impact receipt printer which is exceptionally easy to use. Featuring drop-in paper load, selectable auto-cutter and clamshell covers for easy access and maintenance, the TM-U220II is very reliable and prints on plain paper in three widths.

[Specification sheet](#)

[BACK TO CONTENTS](#)

TM-T70II

EASY TO USE AND LONG LASTING



[View printer prices](#)

[View accessory prices](#)

Printing Technology	Thermal line
Resolution	180 dpi
Size (WxDxH)	125 x 194 x 114 mm
Print Speed (Max)	250 mm/sec

The TM-T70II is the reliable thermal receipt printer that can be fully operated from the front, thanks to its front paper loading. With a small footprint, and accessible button controls, it conveniently sits under your counter, while its fast 250mm per second print speed and margin-less printing allow you to serve your customers hassle-free and quickly.

[Specification sheet](#)

TM-L100

LINER-FREE MEDIA SUPPORT AND ONLINE ORDERING



[View printer prices](#)

Printing Technology	Thermal line
Resolution	203 dpi
Size (WxDxH)	140 x 148.5 x 207 mm
Print Speed (Max)	170 mm/sec

The Epson TM-L100 Liner-Free Label & Receipt Printer is designed for various retail and hospitality environments. It supports a wide range of linerless media, including thick and highly-adhesive options, for both permanent and semi-permanent labels.

[Specification sheet](#)

TM-H6000VI

MULTIFUNCTION RECEIPT PRINTER WITH CHECK PROCESSING



[View printer prices](#)

Printing Technology	Thermal Line
Resolution	180 dpi
Size (WxDxH)	186 x 278 x 181 mm
Print Speed (Max)	500 mm/sec

The Epson TM-H6000VI hybrid printer is an advanced multi-function receipt printer designed to meet the evolving needs of modern businesses. It combines high-speed printing, check processing, and flexible connectivity to accommodate a wide range of point-of-sale (POS) systems

[Specification sheet](#)

TM-T88VII

RELIABLE, HIGH PERFORMANCE AND BACKWARDS COMPATIBLE



[View printer prices](#)

Printing type	Direct Thermal
Print Speed (Max)	500 mm/sec
Print Width	72 mm
Media Width	58 mm

It features a range of design, connectivity and usability improvements and enhancements to improve the user experience. Avoid downtime by choosing proven, reliable hardware from the market leader. Fast print speeds of 500mm/s and high-quality, printed legible receipts will ensure happy customers.

[Specification sheet](#)

EPSON®

TM-M50

LEGACY POS RECEIPT PRINTER



[Visit the site](#)

Printing Technology	Dot Matrix
Resolution	180 dpi
Size (WxDxH)	127 x 127 x 127 mm
Print Speed (Max)	350 mm/sec

The cube design, available in white or black, means it will complement the aesthetics of any modern retail store, and the small footprint means it can fit easily on the counter-top or underneath on the shelf edge. Users of the TM-m50 will also benefit from easy paper loading and advanced paper saving options.

[Specification sheet](#)

TM-L90

LABEL AND BARCODE PRINTING



[Visit the site](#)

Printing Technology	Direct Thermal
Resolution	203 dpi
178	140 x 148 x 203 mm
Print Speed (Max)	150 mm/sec

The TM-L90 is Epson's compact thermal label printer that's also ideal for barcode printing. This model effortlessly increases productivity for post offices, pharmacies, supermarkets and other businesses. You can easily print on different types of label and receipt paper, in a variety of different sizes, thanks to the adjustable cutter.

[Specification sheet](#)

TM-T20III

POS RECEIPT PRINTER



[Visit the site](#)

Printing Technology	Direct Thermal
Resolution	203 dpi
Size (WxDxH)	170 x 208 x 152 mm
Print Speed (Max)	250 mm/sec

Entry-level thermal POS receipt printer provides a cost effective POS solution with fast print speeds and economical features. Fast print speeds, high reliability and economical operation, make this printer a must-have for small retail and speciality stores, hospitality venues and grocery stores.

[Specification sheet](#)

TM-M10

POS PRINTING RE-IMAGINED WITH A COMPACT SLEEK PRINTER



[Visit the site](#)

Printing Technology	Direct Thermal
Resolution	203 dpi
Size (WxDxH)	102 x 102 x 102 mm
Print Speed (Max)	150 mm/sec

The Epson TM-m10 receipt printer comes in a compact 10 x 10 cm size making it one of the smallest receipt printers in its class. The TM-m10 allows for top and front output, with easy switching between the two, and comes with a print speed of 150mm per second, at a resolution of 203 dpi.

[Specification sheet](#)

[BACK TO CONTENTS](#)

EPOS PRINTERS



ABOUT STAR

Star Micronics is a leading manufacturer of high quality thermal receipt printers for retail, hospitality, events, transportation and more.

Star manufactures one of the largest ranges of direct thermal receipt printers with high resolution printing for clear text, graphics and barcodes.

When it comes to connectivity, Star offers a full range of USB, Ethernet, Bluetooth, WiFi and Cloud connected printers for printing from iOS™, Android™ and Windows™ systems, tablets and mobile devices as well as directly from web and cloud-based software for retail and hospitality.

SP700

ADVANCED HIGH SPEED CLAMSHELL™ RECEIPT PRINTER



[View printer prices](#)

[View accessory prices](#)

Printing Technology	Dot Matrix
Printing width	63/60/45 mm
Size (WxDxH)	160 x 245 x 152 mm
Print Speed (Max)	4.7—8.9 lines/s

The SP700 prints at a very impressive 8.9 lines/second, thanks to its bi-directional printing feature and integrated “Logic-Seeking” to optimise the printing process. With a Clamshell design for easy paper loading, this compact, robust and versatile receipt printer is perfect if you need a reliable and quick print.

[Specification sheet](#)

mC-Print2

POWER PACKED INTO A 10CM CUBE



[View printer prices](#)

[View accessory prices](#)

Printing Technology	Direct Thermal
Resolution	203 dpi
Size (WxDxH)	96 x 115 x 100 mm
Print Speed (Max)	100 mm/sec

The Star mC-Print 2 receipt printer offers exceptional performance, in a small package. The compact size, 96 x 115 x 100 mm means it is well suited for applications which are prohibitive for some of its larger competitors, applications such as narrow restaurant counters.

[Specification sheet](#)

SP298

FAST, RELIABLE, COST EFFECTIVE MATRIX IMPACT SLIP PRINTER



[View printer prices](#)

[View accessory prices](#)

Printing Technology	Dot Matrix
Print width	63 mm
Size (WxDxH)	180 x 190 x 138.5 mm
Print Speed (Max)	3.1 lines/s

Coming with a new powerful and scalable system architecture the BV410T models are future-proove. The BV410T thermal transfer printers enable optional RFID encoding and support a wide range of ribbons from wax to resin.

[Specification sheet](#)

[Labels/Ribbons](#)



TSP700II

**HIGH SPEED MULTI-FUNCTIONAL
PRINTER**



[View printer prices](#)

[View accessory prices](#)

Printing Technology	Direct Thermal
Resolution	203 dpi
Size (WxDxH)	147 x 213 x 148 mm
Print Speed (Max)	250 mm/sec

Combining speed, reliability and ease-of-use, the TSP700II multifunctional printer produces high resolution graphics and barcodes for tickets, receipts and labels. The TSP700II is a cost effective multifunctional printer, capable of printing high quality receipts and fixed length tickets and labels on paper up to 0.15mm thick.

[Specification sheet](#)

[Labels/Ribbons](#)

TSP800II

**HIGH SPEED, GRAPHICS,
REPORT AND RECEIPT PRINTER**



[View printer prices](#)

[View accessory prices](#)

Printing Technology	Direct Thermal
Resolution	203 dpi
Size (WxDxH)	180 x 213 x 148 mm
Print Speed (Max)	180 mm/sec

The Star TSP800II thermal receipt printer is a compact printer used for receipts, tickets and labels. An integrated raster driver, with automatic scaling of screenshoot (to 112mm) means it is ideal for kiosk and reporting applications. This wide-format POS printer provides a solution to a number of applications where no POS printer was able to before.

[Specification sheet](#)

[Labels/Ribbons](#)

mC-Print3

**PRINT CUSTOMER RECEIPTS AND
ORDERS SIMPLY AND EFFICIENTLY**



[View printer prices](#)

[View accessory prices](#)

Printing Technology	Direct Thermal
Resolution	203 dpi
Size (WxDxH)	140 x 132 x 125 mm
Print Speed (Max)	250 mm/sec

The Star mC-Print3 receipt printer offers exceptional performance, in a small package. The compact size, 132 x 140 x 125 mm means it is well suited for applications which are prohibitive for some of its larger competitors, applications such as narrow restaurant counters.

[Specification sheet](#)

[Labels/Ribbons](#)

TSP100 Series

**FAST, RELIABLE PRINTING FOR
ANY INDUSTRY**



[View printer prices](#)

[View accessory prices](#)

Media	Thermal paper rolls
Resolution	203 dpi
Size (WxDxH)	142 x 204 x 132 mm
Print Speed (Max)	250 mm/sec

Combining a fast print speed of 250mm/s with Star quality and reliability, the TSP100III offers paper and energy saving features plus a 4 year warranty as standard. The TSP100III is incredibly simple to set up and comes with everything you need included in the box.

[Specification sheet](#)

[BACK TO CONTENTS](#)

EPOS PRINTERS



TSP654II

**ENTRY LEVEL POS RECEIPT
PRINTER**



[View printer prices](#)

Printing Technology	Thermal
Resolution	203 dpi
Size (WxDxH)	104 x 203.5 x 132 mm
Print Speed (Max)	300 mm/sec

A fast 300mm/second thermal POS receipt printer, the TSP650II offers versatility at all levels with a range of connection options for traditional EPOS as well as Tablet POS and web based systems. Retailers can choose to stick to a traditional PC-based system and then to switch to web or tablet solutions as they wish or to run both concurrently.

[Specification sheet](#)

TSP100IV

**SMALLER, SHARPER, BETTER
CONNECTED**



[View printer prices](#)

Printing Technology	Thermal
Resolution	203 dpi
Size (WxDxH)	140 x 169 x 123 mm
Print Speed (Max)	250 mm/sec

The TSP100IV brings a unique new design for a truly revolutionary product. The quality and reliability of the popular TSP100 series has been fused with enhanced connectivity and specialist printing features for the very latest in point of sale and omni-channel commerce. The TSP100IV has every angle covered!

[Specification sheet](#)



Star POS Receipt Printers
High quality thermal receipt printers for
retail, hospitality, events, transportation
and more...

HEALTHCARE PRINTERS



ABOUT TSC

Genuine Supplies creates custom healthcare labels for dozens of applications. These specialized labels allow healthcare professionals to communicate effectively in order to appropriately care for patients.

Healthcare providers need high volumes of labels – with stringent requirements that are unique to the needs of individual organizations. We have extensive experience developing healthcare label solutions – that you can leverage to service your clients and grow your business.

- Blood Bag Labels
- Patient Identification
- Chart Labels
- Pharmacy Labels
- General Purpose Labels

TH DH Series 4"

**SEAMLESS INTEGRATION,
EFFORTLESS DEPLOYMENT**



[View printer prices](#)

Printing Technology	Thermal Transfer / Direct Thermal
Resolution	203 dpi / 300 dpi
Size (WxHxD)	146 x 179 x 231 mm
Print Speed (Max)	8 IPS / 6 IPS

The 4-inch TH DH Series Desktop Barcode Printers are versatile and flexible for diverse printing requirements. This series' versatility enables printing a wide range of difficult labels, including thick, tiny, and long labels and certain types of vertical market labels

[Specification sheet](#)

TH DH Series 2"

**VERSATILE FUTURE PROOF
PRINT QUALITY**

[View printer prices](#)



Printing Technology	Direct Thermal
Resolution	203 dpi / 300 dpi
Size (WxHxD)	138 x 172 x 210 mm
Print Speed (Max)	6 ips / 8 ips

Crisp white and bright full-color scheme, perfectly suited for healthcare environments. Antimicrobial, easy-to-disinfect casing for effortless cleaning, vastly reducing the risk of contamination. IEC 60601-1 Medical-Grade Compliant Power Supply, ensuring safe and reliable use in healthcare facilities

[Specification sheet](#)

TDP-324W

**EVERY FEATURE YOU NEED FOR
MEDICAL WRISTBAND PRINTING**

[View printer prices](#)



Printing Technology	Direct Thermal
Resolution	203 dpi / 300 dpi
Size (WxHxD)	109 x 210 x 260 mm
Print Speed (Max)	6 ips / 4 ips

The TDP-324W 300 dpi high resolution wristband label printer is custom-designed for patient ID. The TDP-324W series works with any available rolls of wristbands on the market, delivering both flexibility and a low cost solution for your wristband printing applications.

[Specification sheet](#)

[BACK TO CONTENTS](#)

HEALTHCARE PRINTERS



TDP-225W

OFFERS BIG FEATURES FOR
SMALL AREAS



[View printer prices](#)

Printing Technology	Direct Thermal
Resolution	203 dpi
Size (WxHxD)	109 x 171 x 209
Print Speed (Max)	5 ips

Built with TSC durability, reliability, and commitment to innovation, the 2-inch-format TDP-225 series direct thermal printer features a compact design and high-performance engine that make it ideal for many healthcare, retail and asset tagging labeling applications.

[Specification sheet](#)



Healthcare

The hygienic design of our healthcare printers aims to provide long-lasting antimicrobial protection and easy disinfection, minimizing contamination risks. It adheres to the IEC 60601-1 Medical-Grade standard, ensuring a safe and reliable power supply in healthcare facilities.





ABOUT ZEBRA

Elevate Care at Every Step of the Patient Journey

Efficiently manage workflows and minimize mistakes with Zebra's thermal printers helping strengthen patient care from admission to discharge.

Healthcare printer models are purpose-built with medical-grade, disinfectant ready materials that can be safely cleaned between each use.

Together, Zebra's printers, healthcare labels and wristbands can be used to label patient samples, track medical supplies, optimise patient identification and manage inventory. This can help healthcare providers efficiently manage workflows and minimise mistakes.

Hospital Bracelet and Patient ID Barcode Wristbands

Zebra's portfolio of hospital bracelets and patient id barcode wristbands include a wide range of the most durable and easy to use direct-print laser and thermal wristbands.

ZQ610+ HC

QUALITY COMPACT MOBILE PRINTING FOR HEALTHCARE



[View printer prices](#)

[View accessory prices](#)

Printing Technology	Direct Thermal
Resolution	203 dpi
Size (LxWxH)	170.9 x 91.4 x 72.4 mm
Print Speed (Max)	4.5 ips

Designed specifically for healthcare, these compact printers feature fast, secure Wi-Fi 6 (802.11ax) and Bluetooth 5.3 wireless connections, a large colour display, class-leading battery technology for full-shift power, disinfectant-ready plastics and powerful remote management tools.

[Specification sheet](#)

ZD611-HC

COMPACT, PREMIUM PRINTER FOR HEALTHCARE PRINTING



[View printer prices](#)

Printing Technology	Direct Thermal
Resolution	203 dpi / 300 dpi
Size (WxHxD)	109 x 210 x 260 mm
Print Speed (Max)	6 ips / 4 ips

Designed for healthcare, feature disinfectant-ready plastics, UV-resistant housing and sealed-button interface for easy cleaning. A medical-grade power supply that's IEC 60601-01 compliant for years of safe, reliable performance. Unmatched printer security to help safeguard sensitive data, including patient information

[Specification sheet](#)

[BACK TO CONTENTS](#)

HEALTHCARE PRINTERS



ZD411-HC

**ADVANCED, COMPACT FOR
HEALTHCARE PRINTING**



[View printer prices](#)

Printing Technology	Direct Thermal
Resolution	203 dpi / 300 dpi
Size (LxWxH)	220 x 115 x 151 mm
Print Speed (Max)	6 ips / 4 ips

The ZD411d-HC advanced desktop printer is purpose-built for healthcare settings, featuring disinfectant-ready white plastics, UV-resistant housing with a sealed button interface, and a power supply compliant with IEC 60601-1 standards.

[Specification sheet](#)

ZQ620+ HC

**EASILY REDUCE RISK OF ERROR IN
SPECIMEN COLLECTION**



[View printer prices](#)

[View accessory prices](#)

Printing Technology	Direct Thermal
Resolution	203 dpi
Size (LxWxH)	173.7 x 117.9 x 76.9 mm
Print Speed (Max)	4.5 ips

Constructed using medical-grade, disinfectant-ready materials that can be safely cleaned between each use to help prevent the spread of germs in hospitals or clinics. Your staff can print labels right at the point of care, reducing labelling errors and improving patient safety

[Specification sheet](#)

ZD621-HC

**MAXIMUM PERFORMANCE FOR
HEALTHCARE ENVIRONMENTS**



[View printer prices](#)

Printing Technology	Direct Thermal / Thermal Transfer
Resolution	203 dpi / 300 dpi
Size (WxHxD)	Dependant on variant
Print Speed (Max)	6 ips / 8 ips

Featuring a healthcare-specific design, choose from direct thermal, thermal transfer and ribbon cartridge models. With a medical-grade power supply, sealed-button interface and UV-resistant, disinfectant-ready plastics, these printers are easy to sanitize, helping prevent the spread of infections.

[Specification sheet](#)

ZD510-HC

**TRUST YOUR WRISTBAND
PRINTING TO A SPECIALIST**



[View printer prices](#)

Printing Technology	Direct Thermal
Resolution	300 dpi
Size (WxHxD)	127 x 178 x 242 mm
Print Speed (Max)	2 ips

Wristbands play a critical role in your healthcare facility. Staff and patients count on wristbands to provide the instant positive identification required to prevent medical errors. You need dependable and fast wristband printing, durable wristbands and consistently scannable barcodes. You need the ZD510-HC

[Specification sheet](#)



ZD421D-HC

SAFE EASY PRINTING. ELEVATE
YOUR EXPECTATIONS



[View printer prices](#)

[View accessory prices](#)

Printing Technology	Direct Thermal
Resolution	203 dpi / 300 dpi
Size (LxWxH)	220.8 x 177.5 x 150.7 mm
Print Speed (Max)	6 ips (203 dpi) / 4 ips (300 dpi)

You need a reliable printer built for healthcare that delivers quality performance, now and for years to come. It needs key features, and be easy to setup, operate, manage and maintain—onsite or remotely. It needs to be secure to protect patient information. You need the ZD421-HC

[Specification sheet](#)

ZD421T-HC

SAFE EASY PRINTING. ELEVATE
YOUR EXPECTATIONS



[View printer prices](#)

[View accessory prices](#)

Printing Technology	Thermal Transfer
Resolution	203 dpi / 300 dpi
Size (LxWxH)	267 x 202 x 189 mm
Print Speed (Max)	6 ips (203 dpi) / 4 ips (300 dpi)

The ZD421 is intuitive and frustration-free, for every user. With Print DNA and setup wizards, it's easy to install and start printing quickly. Manage onsite or remotely using the robust, web-based management tool. Use Print Touch with NFC to pair and print or access how-to-videos. Plus, PrintSecure provides unmatched security for peace-of-mind protection.

[Specification sheet](#)

[BACK TO CONTENTS](#)

COLOUR PRINTERS

PRIMERA
TECHNOLOGY, INC.

CX86e

**FAST AND COMPLEX PRINTING
SOLUTION FOR PRODUCTION**



[View printer prices](#)

Print method	Full colour electrophotographic
Resolution	600 x 600 dpi native to 1200 x 1200
Size (WxHxD)	198 x 195 x 380 mm
Print Speed (Max)	6 ips

The DTM CX86e is the world's smallest LED dry toner colour label printer and helps companies to produce versatile and professional colour labels and tags that maximise advertising impact vs. standard black and white thermal prints.

Due to the compact size the CX86e is ready to use everywhere and easy to transport.

[Specification sheet](#)

PRIMERA
TECHNOLOGY, INC.

LX3000e

**OUTSTANDING SPEED AND
PRINT QUALITY**



[View printer prices](#)

Print method	Thermal inkjet
Resolution	600 x 1200 dpi native; to 1200 x 4800
Size (WxHxD)	438 x 231 x 438 mm
Print Speed (Max)	Up to 4.5 ips

The LX3000e features an all-new tanked-ink system and printhead and provides the lowest cost per print. The printer offers the same quality features as LX910e with the addition of an user-replaceable printhead and large individual CMY ink tanks with either dye or pigment ink. It's perfect for a range of industries including health and beauty, food and beverage, chemicals and more.

[Specification sheet](#)

PRIMERA
TECHNOLOGY, INC.

LX610e

**GREAT PRINT QUALITY, WIDE
VARIETY OF SUBSTRATES**



[View printer prices](#)

Print method	Thermal inkjet
Resolution	600 x 1200 dpi native; to 1200 x 4800
Size (WxHxD)	345 x 242 x 432 mm
Print Speed (Max)	4.5 ips

With LX610e printing and precise die-cutting are incorporated into one easy, timesaving step. Just import your design into the included software and create an individual contour cut or select one of the many standard die-cuts such as squares, circles, stars or rectangles.

You will never need to order a custom die again!

[Specification sheet](#)

TOSHIBA

BC400-P

**INDUSTRIAL COLOUR LABELLING
ON-DEMAND**



[View printer prices](#)

Print method	Inkjet
Resolution	1200 x 600 dpi, 1200 x 1200 dpi
Size (WxHxD)	386 x 570 x 394 mm (no cutter)
Print Speed (Max)	11.8 ips

The BC400P delivers the perfect labelling fit for just-in-time productions and short-run manufacturing. Produce the exact quantities you require at any time with the flexibility to change information on the label whenever needed. Pre-printed labels belong to the past. Our digital colour labelling enables a new level of versatility whenever it comes to meeting the requirements of printing variable content.

[Specification sheet](#)

EPSON® COLORWORKS C6500

**ADVANCED, COMPACT FOR
HEALTHCARE PRINTING**



[View printer prices](#)

Print head	μTFP4
Resolution	1200 x 1200 dpi
Size (WxDxH)	444 x 512 x 326 mm
Print Speed (Max)	13 mm/s to 85 mm/s

The Colorworks C6500 Colour Label Printer meets the needs of small to medium batch customers across many sectors (food, chemical, beverage, manufacturing etc.). These on-demand, digital, four-colour label printers open up new opportunities for businesses with lots of SKUs to manage and not much time. The series includes peeler-equipped (Pe) and auto-cutter (Ae) models.

[Specification sheet](#)

EPSON® COLORWORKS C7500

**SETTING NEW STANDARDS IN
COLOUR LABEL PRINTING**



[View printer prices](#)

Print method	Line printer (PrecisionCore MicroTFP)
Resolution	600 x 1200 dpi
Size (WxDxH)	392 x 598 x 395 mm
Print Speed (Max)	300mm/sec at 600 × 1,200dpi

The Colorworks C7500g colour label printer has a print speed of up to 300 mm per second, and at a resolution of 600 x 1,200 dpi. This, in combination with the Epson pigment ink ensure high quality smudge and waterproof labels, which will not fade. The C7500 produces especially durable printouts with DuraBrite Ultra Ink on matt materials, whilst for even higher quality labels on glossy media, choose the C7500G.

[Specification sheet](#)

EPSON® COLORWORKS C3500

**EASY TO USE FOUR COLOUR
LABEL PRINTER**



[View printer prices](#)

Printing method	Epson Micro Piezo™ Serial inkjet
Resolution	720 x 360 dpi
Size (WxDxH)	310 x 283 x 261 mm
Print Speed (Max)	Max. 103mm/sec at 360 x 360dpi

The ColorWorks C3500 desktop colour label printer is an inkjet printer for in-housing printing of colour labels on demand. Designed for various matte, glossy and film-coated labels, tickets and price tags with a width of 30 to 112 mm. Thanks to its four separate colour cartridges it prints especially economically.

[Specification sheet](#)

TSC The Smarter Choice.

CPX4

**COLOURISE YOUR BUSINESS.
EXPAND YOUR VISION**



[View printer prices](#)

Printing Technology	Direct Thermal
Resolution	1200 x 1200 dpi
Size (WxHxD)	386 x 394 x 570 mm
Ink Colour	CMYK

The CPX4 Series is designed for on demand full color labels providing full color images, clear text, and sharp barcodes at a print resolution of 1200 x 1200 dpi.

Our ink is able to sustain its quality over time, maintaining color that is both waterproof and highly durable.

[Specification sheet](#)

[BACK TO CONTENTS](#)

LABELS



[Thermal Transfer Labels](#)



[Direct Thermal Labels](#)



[Genuine Zebra Labels](#)



[Direct Thermal Linerless Label Rolls](#)



[A4 Laser Labels](#)

With over 20 years' experience of supplying label and tag solutions, we provide a complete in-house label printing service. Our expert Art & Design team can create bespoke labelling solutions tailored to your requirements, including full design and print services.

We supply millions of labels EVERY WEEK across the UK and Europe from our fully ISO-accredited facilities, ensuring the best prices and quick lead times.

Multiple Formats Available:

Choose from our huge selection of barcode labels, self-adhesive labels on rolls and laser labels. Buy printed and plain labels of any shape, size or colour. Our sales team provides a quick quote and fast turnaround – in fact we pride ourselves as being one of the best in the industry for both!

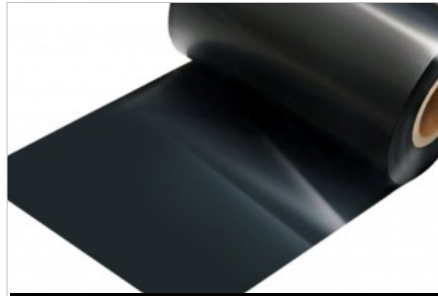
We offer up to 8 colour printing with UV or standard inks; we have over 3000 stock cutters in all shapes and sizes so we should be able to save you money on new tooling. Our bespoke full art & design service assists you from the ground up and we will help you through all stages of labelling. In addition, we have full Digital Print giving you extremely high quality, full colour labels in small and medium quantity runs, without the need for art & design plates, giving you total freedom with your designs.

Different Label Materials Available:

Supplyline Auto ID can provide all materials for labels from standard paper to polyethylene, polyester, polypropylene and vinyl. In addition, we can offer durable label materials like 3M for special and demanding applications. If you need Plants Tags, Textile Clothing labels, Metallised Polyester, Anodised Aluminium and Domed labels, we have you covered. We provide all adhesive types from Perm, Peel, Chilled and deep freeze. We also offer specialised adhesives for Tyres, Sea Water, extreme high temperatures, CryoCool and many more.



[Genuine Armor Ribbons](#)



[Genuine ITW Ribbons](#)



[Genuine Zebra Ribbons](#)



[Wax Ribbons](#)



[Wax Resin Ribbons](#)



[Resin Ribbons](#)



[Colour Ribbons](#)



[Explore Ribbon Types](#)



[Explore Genuine Ribbons](#)

Looking for high-quality ribbons at unbeatable prices? You've come to the right place! We proudly offer the UK's biggest selection of ribbons for Label Printers, Barcode Printers, In-Line Date Coding, and Packaging Printing Machines. With our best-price guarantee, we're confident no one can beat us on value. Challenge us today to find out!

As a premium reseller, Supplyline ID offers a comprehensive range of ribbons from the world's leading manufacturers, including Armor, the global number-one, and ITW Thermal Films, the UK's largest ribbon producer. Plus, our partnerships with three other top manufacturers allow us to source an even broader selection of off-the-shelf or custom-manufactured ribbons.

What We Offer:

- Wax, Wax/Resin, and Full-Resin Ribbons compatible with nearly every label and coding printer on the market.
- A vibrant selection of colours, alongside classic black ribbons, tailored to your specific needs.
- Quick turnaround times for bespoke sizes—manufactured and ready in just 8–10 days.
- Stock availability for contract customers, including call-offs and off-the-shelf options.

[BACK TO CONTENTS](#)

TOSHIBA

Toshiba's branded consumables are designed to work seamlessly with our full range of barcode and label printers. Every product is developed to match the demands of modern printing technologies, delivering crisp, consistent output while protecting your hardware investment.

Solutions for Every Industry

The consumables support mission-critical printing across a wide range of sectors:

- * **Retail** — Mobile POS, shelf labels, price markdowns, promotional labelling
- * **Transport & Logistics** — Shipping, tracking, warehouse documentation, invoicing, delivery notes
- * **Manufacturing** — Product and pallet labels, print $\&$ apply systems, RFID identification, validated labels
- * **Healthcare** — Patient ID, mobile pharmacy printing, lab sample tracking
- * **Public Services** — Reliable printing for enforcement teams, police, and public transport operations

Toshiba Approved Print Ribbons

The ribbons are developed exclusively for Toshiba printers and tested to the highest standards to ensure dependable performance.

Key Benefits

- * Consistent print quality for text, graphics, and barcodes
- * Reduced print $\&$ head wear, extending printer life
- * Higher productivity with long $\&$ length ribbons (up to 800 m on selected models)
- * Wide range of grades and sizes, available for fast delivery



Ribbon Grades: A complete portfolio to match every application requirement:

- * **Wax** — Versatile, cost $\&$ effective printing on a wide range of label materials with sharp, clear results
- * **Wax Resin** — Durable, high $\&$ quality print for retail, apparel, outdoor use, and environments exposed to weather extremes.
- * **Resin** — Certified to UL and BS5609 standards. Designed for harsh environments requiring resistance to heat, solvents, scratching, and detergents.

Whether you need an engineer to repair a faulty printer or need help installing software, no problem! Our ad-hoc services, helpdesk support, on-site and off-site contracts and billable options offer hassle-free, quality and flexible solutions tailored to you.

Call our expert team for advice on improving the productivity and efficiency of your business.



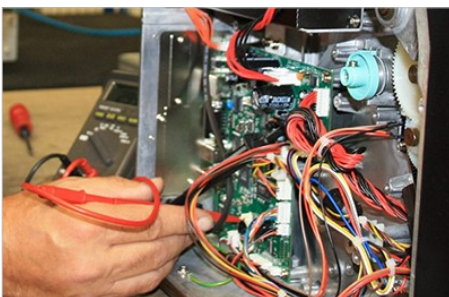
[Ad Hoc Call Out and Repair](#)



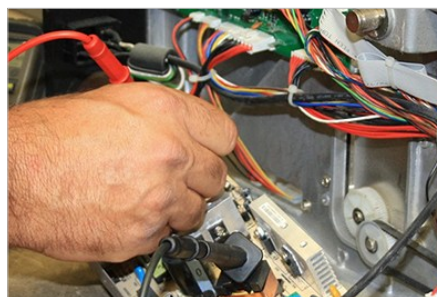
[Ad Hoc Support for Mobile PDAs](#)



[Billable Repair Options for Mobile PDAs](#)



[Maintenance Options for PDAs](#)



[Printer Contracts & Repairs](#)



[Printer Services & Maintenance](#)



[Printer & Software Installations](#)



[Warehouse Management Software](#)



[Return to Workshop or Depot Repair](#)

[BACK TO CONTENTS](#)

Unlock fast, professional label creation with BarTender Starter Edition, the powerful, ready-to-use barcode and label design software.

Ideal for small businesses and departments that need to quickly and easily generate labels, BarTender Start Edition gives you everything you need to design and print industry-compliant labels in minutes.

Features include

- * Create label and document templates
- * Easy WYSIWYG template design
- * Up to 3 printers
- * A 3-year Maintenance & Support contract

[View Starter prices](#)



BarTender

Starter
Edition

BarTender Enterprise Edition provides a centralised location for label templates and documents, eliminating version confusion and reducing operational risk.

The intuitive drag-and-drop Workflow Designer makes it easy to design, approve, and publish labels faster, while built-in check-in/check-out and revision control safeguard document integrity.

Features include

- * Create label and document templates
- * Encode RFID tags, smartcards and magnetic stripe cards
- * Minimum 5 printers for Enterprise edition
- * A 3-year Maintenance & Support contract

[View Enterprise prices](#)



BarTender

Enterprise
Edition

BarTender Automation Edition integrates with leading platforms including SAP, Microsoft, Oracle, Sage, and more. Using advanced integration methods like the BarTender REST API and pre-built data connectors, it enables custom automation without requiring programming expertise.

Repetitive labelling tasks such as printing and file management can be fully automated, freeing up valuable time and resources.

Features include

- * Easy-to-use design tools and basic printing management
- * Enable multiple users to print labels from any networked PC
- * Minimum 3 printers for Professional and Automation editions
- * A 3-year Maintenance & Support contract

[View Automation prices](#)



BarTender

Automation
Edition

BarTender Professional Edition lets you create dynamic templates that automatically adapt label content based on live data, eliminating the complexity of managing countless individual templates.

With support for more than 20 database and file types, you can connect your labels directly to your existing systems to ensure the right data prints every time. RFID implementation is effortless, with encoding for inlays, and support for smart cards and magnetic stripe cards.

Features include

- * Build and manage your own database
- * Create label and document templates
- * Easy WYSIWYG template design
- * 3-year Maintenance & Support contract

[View Professional prices](#)



BarTender

Professional
Edition

[BACK TO CONTENTS](#)

Save Steps, Save Money

BarTender[®] Mobile App

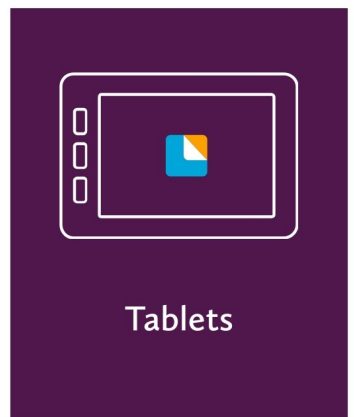
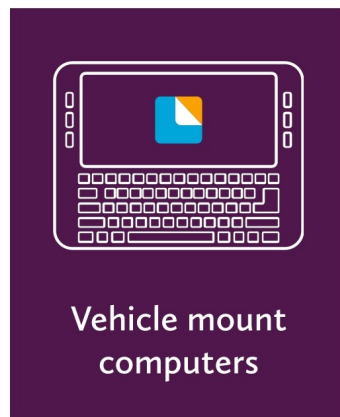
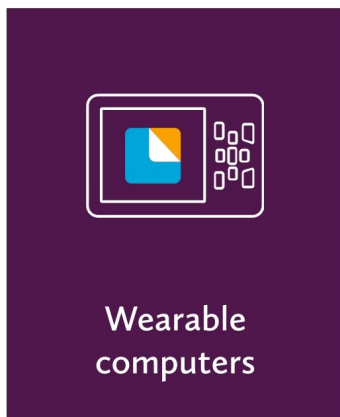
Print the exact right label, at the exact right time,
to any connected printer



The BarTender[®] Mobile App works with BarTender 2022

Building on the power of BarTender[®] — the most used software to design, manage and print labels, barcodes, documents and RFID tags — the BarTender Mobile App offers enhanced mobility and accessibility. It puts label printing directly into the hands of the people who use the labels to positively impact your business — whether it's in production, warehousing, a retail store, or in the field.

Install the BarTender Mobile App on any Android or iOS device used by your mobile workforce.



The BarTender Mobile App runs on any mobile device from major manufacturers with Android 10.0 or iOS 15 or later, and supports printing to industry-leading printers.



CITIZEN

DATALOGIC

EPSON[®]



Honeywell

SAMSUNG



TOSHIBA



www.SeagullScientific.com

REWIND UNITS

AD1211S0

ACOUSTIC ALERTS REWINDER IS OUT OF LABELS



[View rewriter prices](#)

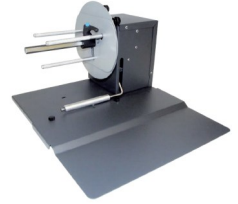
Handles labels	9.60" (244mm)
Max roll diameter	9.84" to 11.81" (250—300mm)
Power supply	100/240VAC - 2.5A at 24V
Adjustable core holder	1.57" to 4.64" (40—118mm)

Handles labels up to 127mm, 174mm and 244mm wide and rewind rolls with a diameter up to 250mm and 300mm. Users can choose among 3 different types of core holders: the adjustable core holder from 40mm up to 118mm, 1" and 3" fixed core holders.

[Specification sheet](#)

SRA

SMART SOLUTIONS FOR THE LABELLING INDUSTRY



[View rewriter prices](#)

Handles labels	Up to 4.72" (120mm)
Max roll diameter	Up to 6.7" (170mm)
Speed	Up to 225 rpm
Adjustable core holder	1.57" to 3" (40-76mm)

Handles labels up to 120mm (4.72") and unwind rolls with a diameter up to 170mm (6.72"). Users can choose among 2 different types of core holder: the adjustable one from 40mm (1.57") up to 76mm (3") and 3" fixed.

[Specification sheet](#)

MC10

POPULAR & ECONOMICAL REWINDER



[View rewriter prices](#)

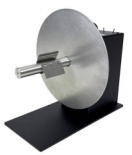
Handles labels	Up to 125mm wide
Max roll diameter	Up to 220mm
Speed	50cm/sec
Power supply	15v-DC

The MINI-CAT (MC) Label Rewinders are the world's most popular low-price Label Rewinders. They are capable of re-winding label rolls up to 125mm wide (115 mm for MC-11), up to 220 mm in diameter at speeds up to 50 cm/sec. The MC-10 has a 76 mm diameter vane style core holder. You can also use the included coreless rewind" feature to rewind directly on-shaft.

[Specification sheet](#)

CAT-3 STANDARD

REWINDERS WITH CONSTANT ADJUSTABLE TORQUE



[View rewriter prices](#)

Handles labels	Up to 155mm wide
Max roll diameter	Up to 300mm
Speed	Up to 125cm/sec
Power supply	Input 230VAC – 50Hz; Output: 15VDC – 4.33A

The CAT-3-STANDARD label rewriter, handles labels up to 155mm wide. Winds a roll of labels up to a 300 mm diameter. Torque and Direction are fully controllable from the Control Panel. Dual torque ranges provide plenty of power for use with a LABELMATE Slitter, too.

[Specification sheet](#)

PRINTHEADS

At Supplyline we stock a range of Printheads, click on the links below to see the relevant printheads for your brand.

[Avery Dennison](#)

[Bizerba](#)

[CAB](#)

[Citizen](#)

[Datamax O'Neill](#)

[Domino](#)

[Eidos](#)

[Epson](#)

[Godex](#)

[Honeywell](#)

[Intermec](#)

[Markem Imaje](#)

[Markem Smartdate](#)

[Monarch](#)

[Printronix](#)

[Sato](#)

[Star](#)

[Toshiba](#)

[TSC](#)

[Videojet](#)

[Zebra](#)



[BACK TO CONTENTS](#)



DESKTOP
PRINTERS

INDUSTRIAL
PRINTERS

MOBILE
DEVICES

BARCODE
SCANNERS

PLAIN &
PRINTED
LABELS

SOFTWARE
SOLUTIONS

TOSHIBA  **ZEBRA** **Honeywell**
DATALOGIC **CITIZEN** **TSC**
EPSON **star**

01403 865 111
info@supplylineid.com
www.supplylineid.com

