

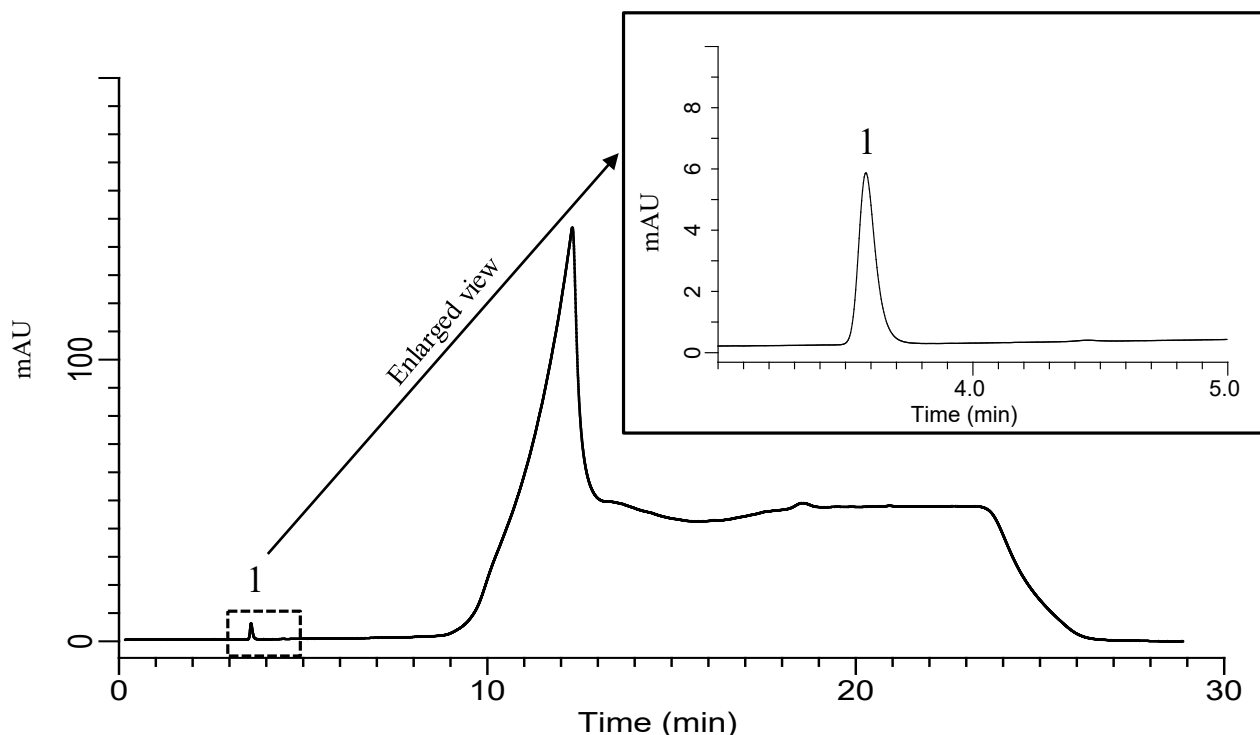
InertSearch for LC

Inertsil Applications

Analysis of Acetic Acid

(Under the Condition of USP43-NF38, GENERAL CHAPTERS <503> ACETIC ACID IN PEPTIDES)

Data No. LB695-1087



Conditions

System : Chromaster HPLC system
Column : InertSustainSwift C18
(5 μ m, 250 x 4.6 mm I.D.)

Column Cat. No. : 5020-88027

Eluent : A) CH₃OH
B) Phosphate Buffer *

Analyte:

1. Acetic acid 0.1 mg/mL

RSD of the peak area (%) (n=6) : 0.25 (\leq 5.0)

Time (min)	A (vol%)	B (vol%)
0.0	5	95
5.0	5	95
10.0	50	50
20.0	50	50
22.0	5	95
30.0	5	95

*Dissolve 42 g of sodium hydroxide in water, and dilute with water to 100 mL (Solution 1). Add 0.7 mL of phosphoric acid to 1000 mL of water, and adjust with Solution 1 to a pH of 3.0.

Flow Rate : 1.2 mL/min
Col. Temp. : 40 °C
Detection : UV 210 nm
Injection Vol. : 10 μ L
Sample : Standard