

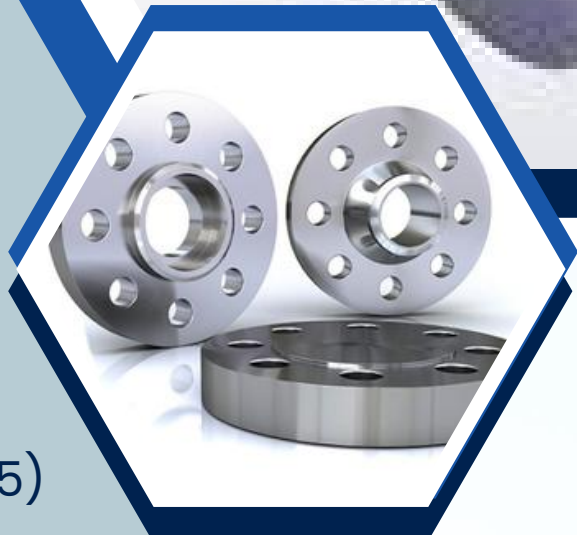
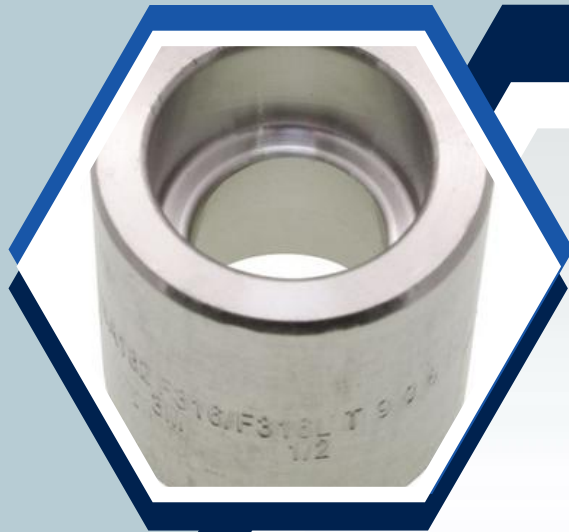


BHAVANI STEEL FORGING INDUSTRIES RAJKOT GUJARAT

Our Products:

- ✓ Forged Carbon Steel FLANGE (SA105)
- ✓ Forged Carbon Steel Tee/Elbow (SA105)
- ✓ Hex Plug And Coupling (SA105)
- ✓ Round Bar (SA105)
- ✓ Tee Sa234wpb

.....



Call Us
+91-6354213859



Visit Our Website
www.bhavanisteel.in

ABOUT US

AN ISO 9001: 2015 CERTIFIED COMPANY WELL ESTABLISHED AND EXPERIENCE IN MANUFACTURE OF FORGED FLANGES & PIPE FITTINGS IN CARBON, STAINLESS AND MILD STEEL CONFORMING TO ANSI B16.5, B16.11 & B16.9 STANDARDS AND SPECIFICATIONS FOR APPLICATION IN PETROCHEMICALS, FERTILIZERS, REFINERIES, CHEMICAL & PROCESS PLANTS, PRESSURE VESSELS, INDUSTRIAL VALVES AND HEAT EXCHANGER ETC. ALL PRODUCT: AND MANUFACTURING FACILITIES ARE APPROVED FOR QUALITY INSPECTION BY THIRD PARTY INSPECTION AGENCIES LIKE B.V.I.S, UHDE, H&GC, BAX COUNSEL ETC. MANUFACTURING INFRASTRUCTURE CONSISTS OF STATE OF THE ART TECHNOLOGY, EQUIPMENTS AND MACHINES.

COMMITMENT TO QUALITY IS INITIATED RIGHT FROM SOURCING OF RAW MATERIAL TO THE FINISHED PRODUCTS. SOPHISTICATED METALLURGICAL & METROLOGICAL LABS INVOLVING HARDNESS TESTER, UNIVERSAL TESTING MACHINES, MEASURING INSTRUMENTS ETC. ENSURE HIGH QUALITY READY TO FIT PRODUCTS.

PLANNING R&D, PERFECT ENGINEERING AND DEVELOPMENT OF JIGS & FIXTURES IS ACHIEVED THROUGH PRO/ENGINEER SOFTWARE. PROCESS CONTROL IS ENSURED AT DIFFERENT STAGES TO MAINTAIN CONSISTENT QUALITY AND TRACEABILITY. WITH CUSTOMER SATISFACTION AS QUALITY POLICY, BHAVANI STRIVES HARD FOR CONTINUOUS IMPROVEMENT TO ACHIEVE DESIRED QUALITY AT OPTIMUM COST.

Our Products

- (1) WE MANUFACTURE CARBON STEEL FORGED FLANGE AND CARBON STEEL FLANGE SA-105 FROM SIZE ½" TO 24" AND ABOVE SIZE PRESSURE RANGE 150# CLASS PRESSURE TO 2500# CLASS PRESSURE.**
- (2) WE MANUFACTURE FORGED TEE / FORGED ELBOW / FORGED PLUG / FORGED COUPLING CARBON STEEL SA-105 FORM SIZE ½" TO 4" AND PRESSURE 3000# CLASS AND 6000# CLASS PRESSURE.**
- (3) FORGED ROUND BAR CARBON STEEL SA-105 SIZE 15MM OD TO 300MM OD AND LENGTH 300MM TO 3000 MM.**
- (4) WE CAN PROVIDE YOU TEST CERTIFICATE IF YOU REQUIRED.**
- (5) THIRD PARTY INSPECTION ALSO AVAILABLE.**

Product List

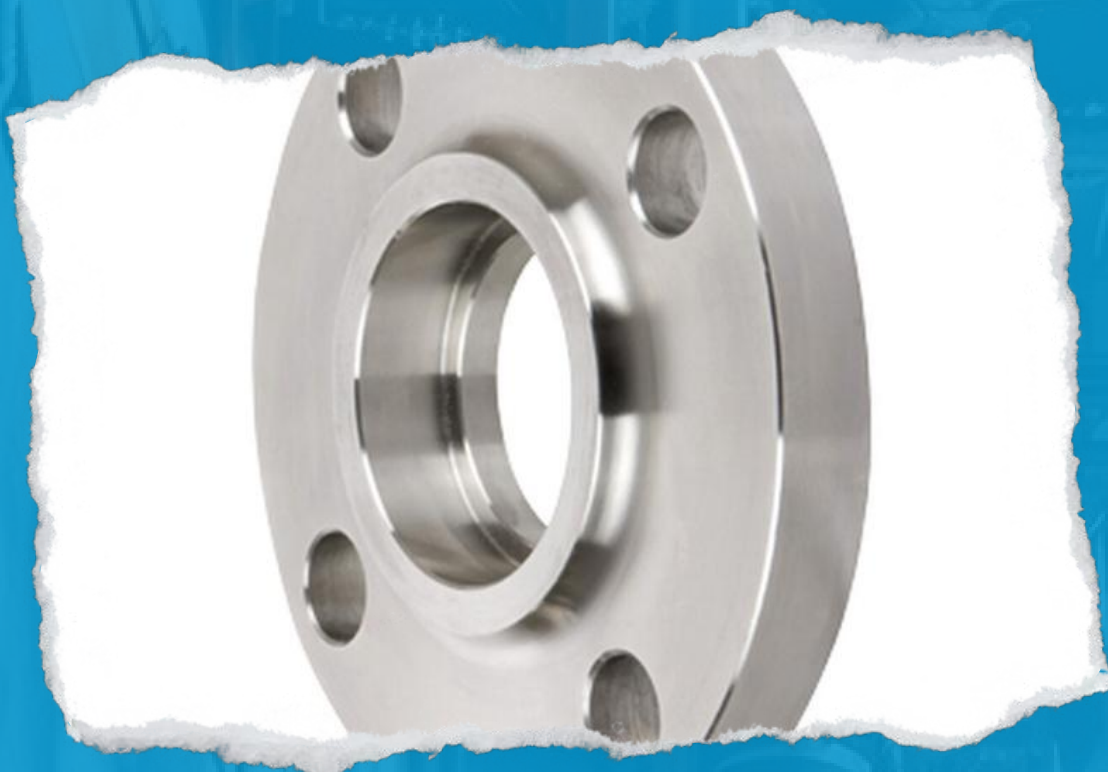
- **WELD NECK FLANGE**
- **BLIND FLANGE**
- **FLANGE WITH HUB**
- **FLANGE WITHOUT HUB**
- **LONG WELD NECK FLANGE**
- **LJFF FLANGE**
- **REDUCING FLANGE**
- **THREADED FLANGE**
- **SPECTACLE FLANGE**
- **SWRF FLANGE**
- **INDUSTRIAL FLANGE**
- **FLANGE AS PER DRAWING**
- **G.I. FLANGE**
- **HOT DIP G.I. FLANGE**
- **FORGED ELBOW**
- **FORGED TEE**
- **FORGED COUPLING**
- **FORGED PLUG**
- **FORGED ROUND BAR**
- **TONGUE AND GROOVE FLANGE**

Our Products



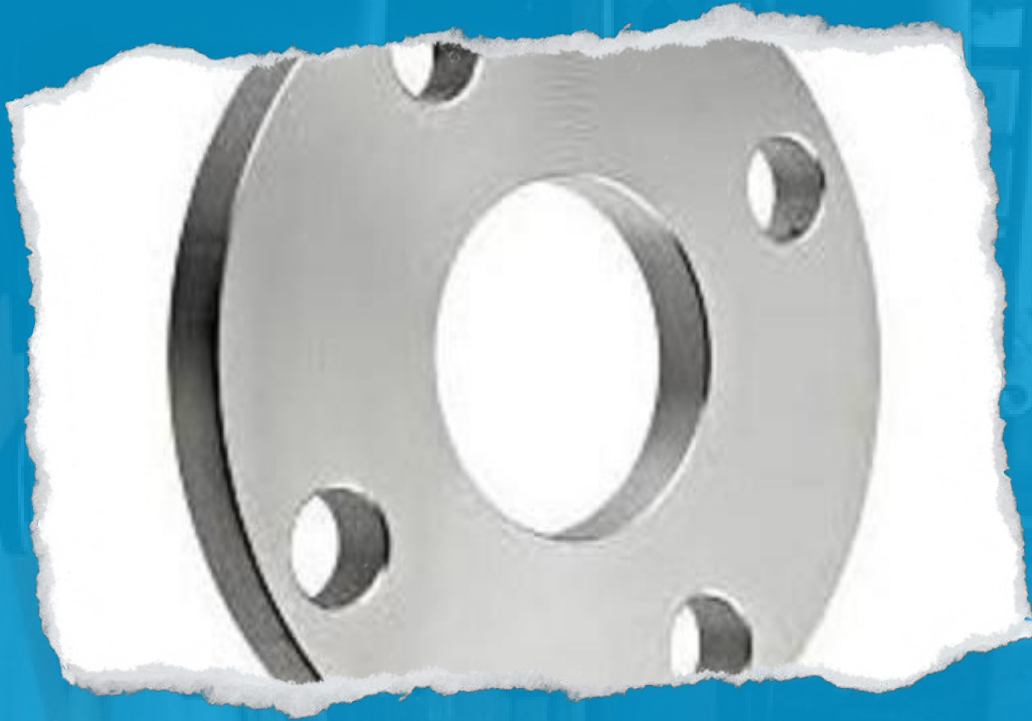
**1) WELD NECK/
SA105/SS304/SS316
/0.5 INCH TO 24
INCH and Above
Size**

**2) BLIND FLANGE
SA105/IS2062/SS30
4-SS316/0.5 INCH
TO 24 INCH and
Above Size**



**3) FLANGE WITH
HUB SORF
FLANGE/SA
105/SS304/SS316/
0.5 INCH TO 24
INCH and Above
Size**

Our Products



**4) WITHOUT HUB
FLANGE/SORF/SOFF /
M.S./C.S./SS304/SS31
6-0.5 INCH TO 24
INCH and Above Size**

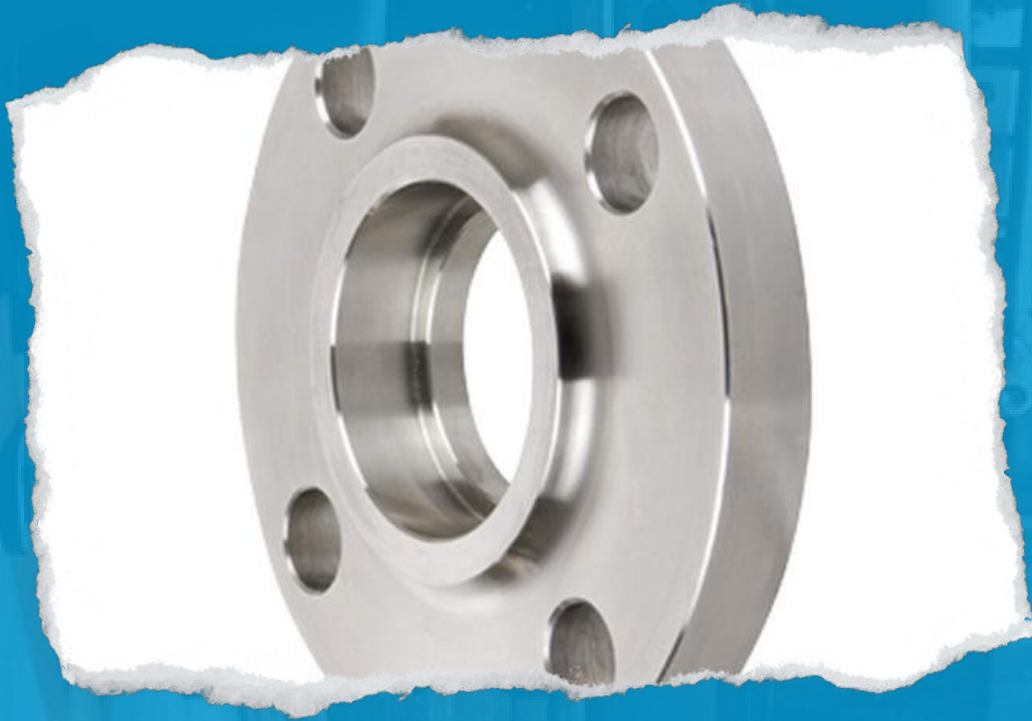


**5) LONG WELD
NECK FLANGE/SA
105/SS304/SS316**



**6) LJFF FLANGE
WITHOUT HUB/SA
105/IS2062/SS304/
SS316/0.5 INCH TO
24 INCH and Above
Size**

Our Products

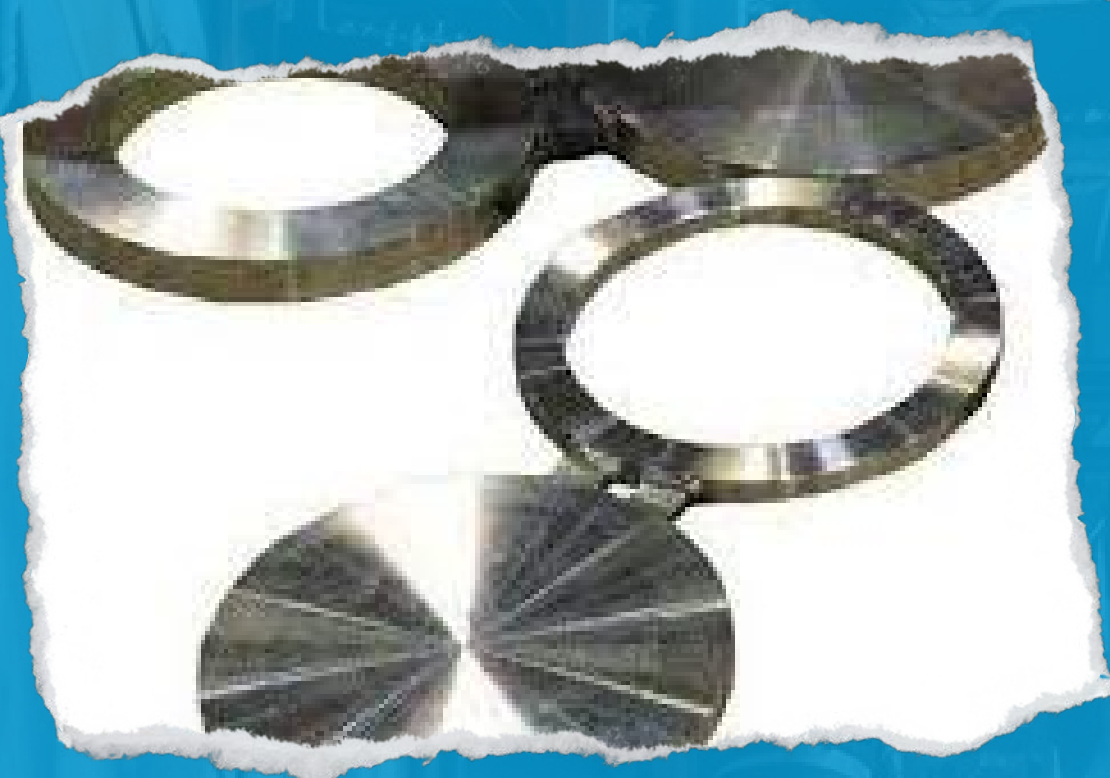


**7) REDUCING FLANGE
SA105/SS304/SS316/
0.5 INCH TO 24 INCH**

**8) Threaded Flange
/SA105/SS304/SS316
6/0.5 INCH TO 8
INCH**



**9) SPECTACLE
FLANGE**



Our Products



**10) SWRF FLANGE
SA 105/IS
2062/SS304-
SS316/0.5 INCH TO
12 INCH**

**11) INDUSTRIAL
FLANGE/RING
FLANGE / SA 105/IS
2062/SS304/SS316/
0.5 INCH TO 24
INCH and Above
Size**



**12) FLANGE AS PER
DRAWING /SA 105
IS2062/SS304/SS31
6-0.5 INCH TO 24
INCH and Above
Size**

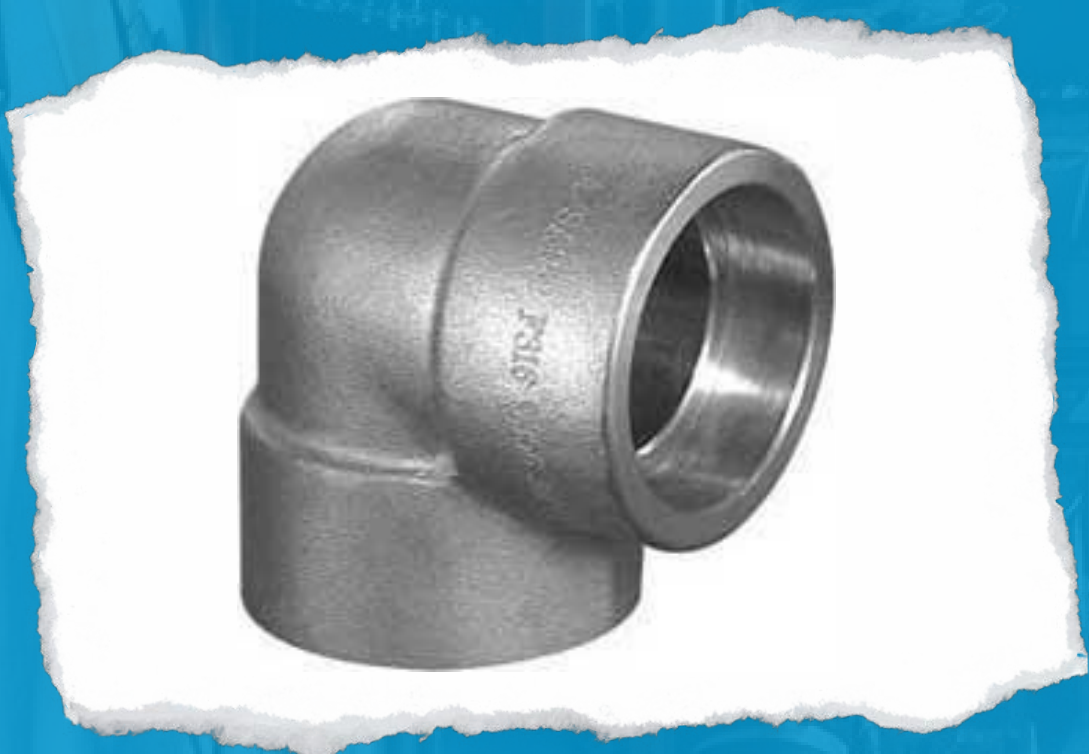
Our Products



**13) G.I.
FLANGE/SORF/SOFF
/M.S./C.S./0.5 INCH
TO 24 INCH and
Above Size**

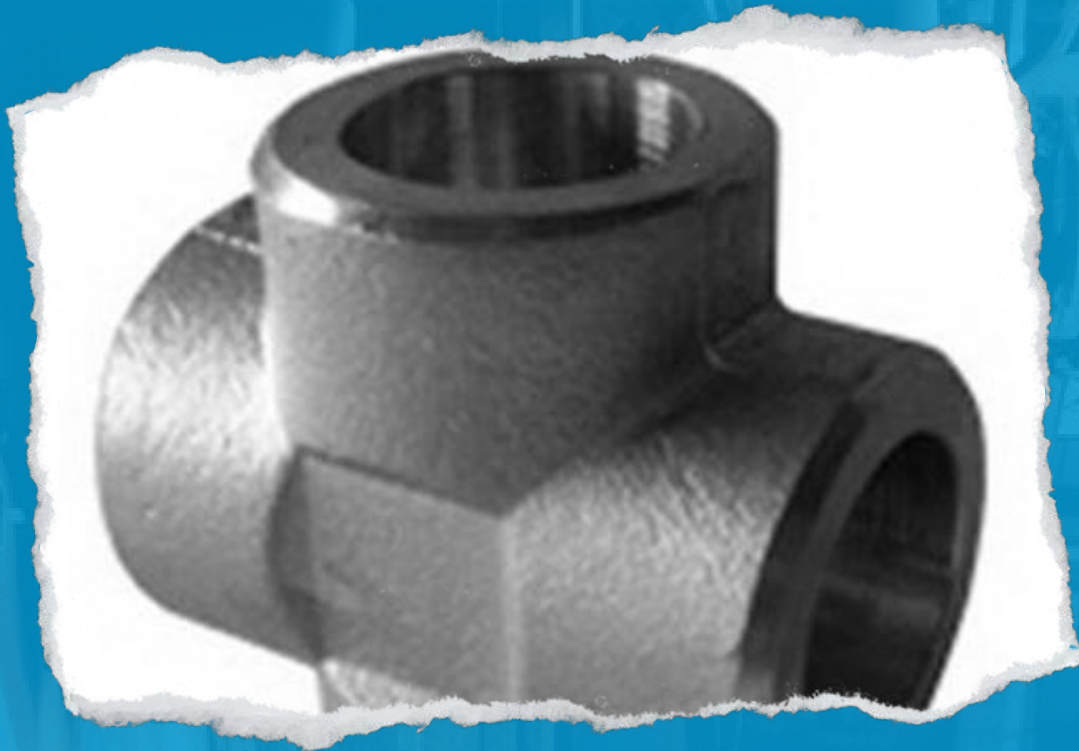


**14) HOT DIP G.I.
FLANGE/SOFF/M.S./
C.S./0.5 INCH TO 24
INCH and Above
Size**



**15) FORGED ELBOW
ELBOW/90DEG/
45DEG SA 105-
SS304/SS316/0.5
INCH TO 4 INCH**

Our Products



**16) FORGED TEE/SA
105/SS304/SS316/0.5
INCH TO 3 INCH**

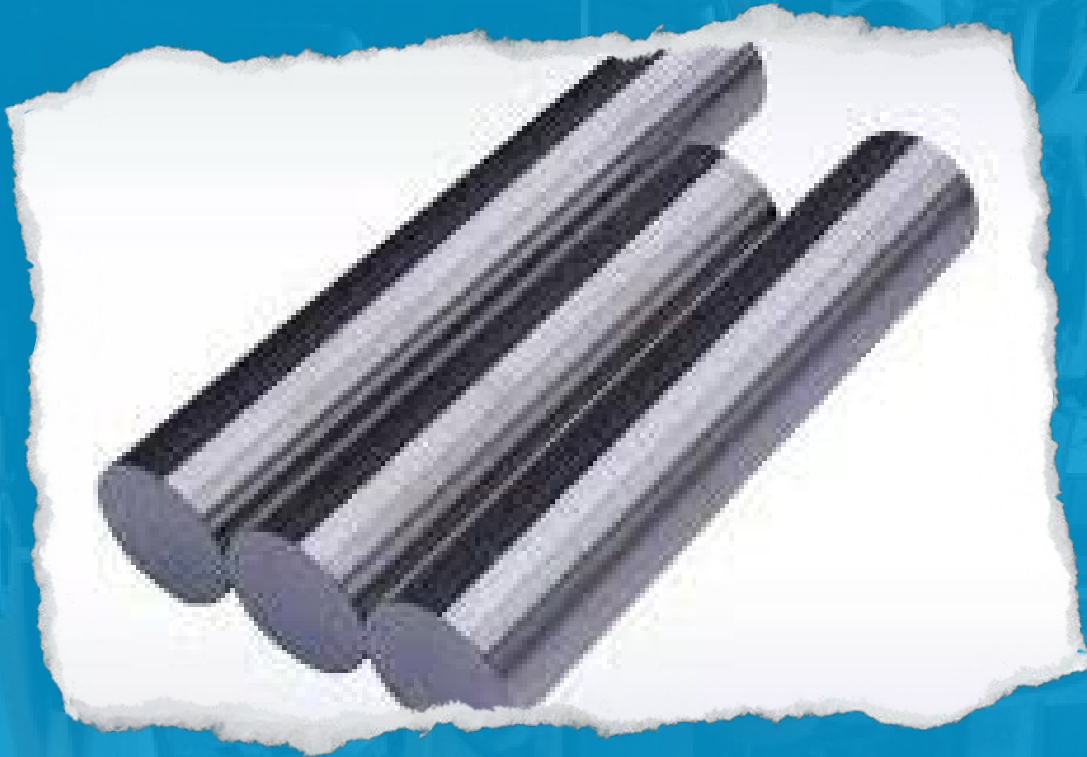
**17) FORGED
COUPLING/HALF &
FULL/SA 105-
SS304/SS316/0.5
INCH TO 4 INCH**



**18) FORGED PLUG
Threaded/Plug/BSP
/NPT/BSP &
NPT/SA105/SS304/S
S316/0.5 INCH TO 4
INCH**



Our Products



**19) FORGED ROUND
BAR/SA105/SS304/
SS316**

**20) TONGUE AND
GROOVE FLANGE**



CONTACT US



Partner

Kishore (Raju) Doshi



website

www.bhavanisteel.in



Phone

+91-6354213859, +91-9724459238



Email

bhavanisteels1234@gmail.com



Address

Bhavani Steel Forging Industries
Rajkot Gujarat 360004