

# PRELIMINARIES

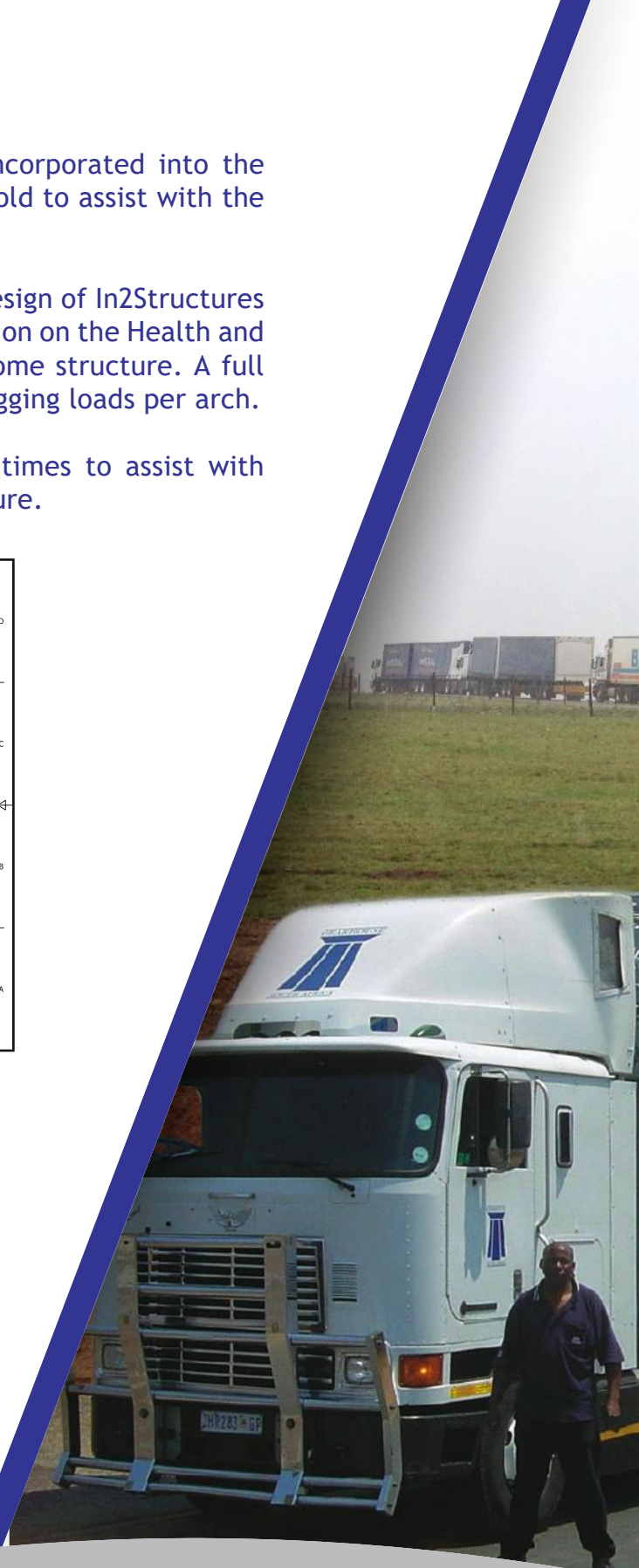
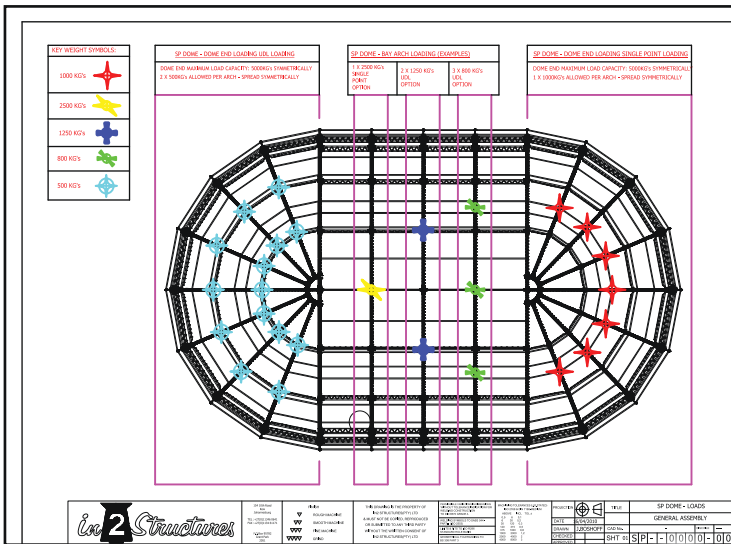
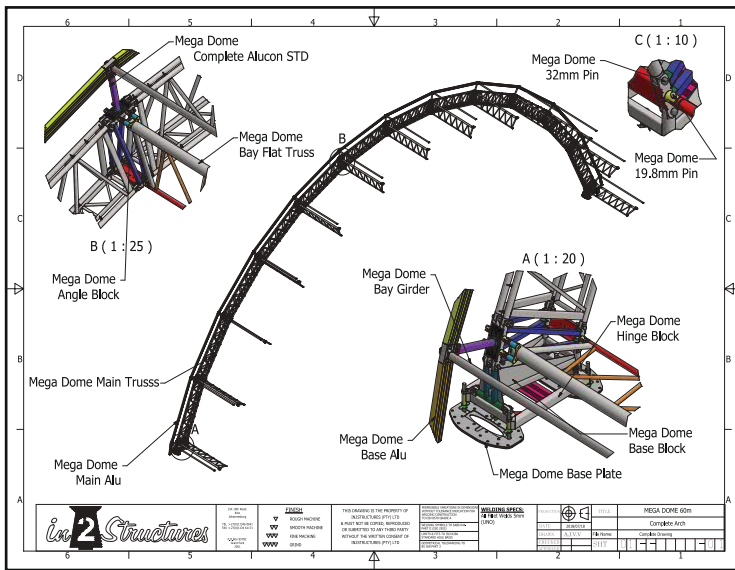


# MANUALS

A full set of drawings and assembly details are incorporated into the step-by-step manual supplied with each structure sold to assist with the build.

Safety is an integral part of the development and design of In2Structures Dome structures. Included in the manual is a discussion on the Health and Safety procedures required in the assembly of a Dome structure. A full set of drawings are also provided, indicating safe rigging loads per arch.

The In2Structures design team is available at all times to assist with questions regarding safety in and around the structure.



# TRUCKING & PACKING

Trucking is an integral part of the Dome Structures. Purpose designed stillages have been developed to transport all the trussing, skins, aluminium and blocks. As the Dome structures have been designed to be touring structures, these robust stillages protect the equipment from the day to day knocks that are experienced during long distance shipments.

Weatherproof covers for the smaller equipment stillages are used to protect them from the elements.

Dome product designs have been executed with shipping in mind. All parts of the structures can be hand packed into containers and are stackable to save space and costs.



## SAFETY SAFETY

**Construction Site** **Authorised Personnel Only**

**DISCLAIMER:**  
**All Visitors and Drivers to report to the Site Office**

- Safety shoes required.
- When working at heights, Safety Harness required. (Irata standard)
- Construction helmet required.
- High visibility clothing must be worn in this area.
- No hand on wheel.
- Lifting Danger!
- Beware of forklifts. Only one person on forklift at any time.
- 5 km DRIVE SLOW**

Gearhouse SA, their subsidiary and associated companies, employees, contractors, subcontractors, agents, workmen, directors, cannot be held liable for any injury to a person or loss of property regardless of whether such injury or loss results from the negligence of the principals.

Follow the instructions of all the Security and Safety Officer at all times.

**in2 Structures**  
A member of Gearhouse Group of Companies  
PROJECT MANAGER | JOHAN ALLERS | 082 550 9075

