

Your Way Home



Vantage Rise
Interior Selections

StreetSide
A QUALICO Company



Contents

Essentials Package	2	Exclusive Package	22
Flooring & Cabinets	4	Upgraded Appliances	24
Countertops & Wall Tile	6	Main Bath Upgrade	24
Hardware & Plumbing	8	Fireplace Upgrade	25
Lighting	11	Blinds Package	26
Appliances	12	Finished Garage	26
Air Conditioning Rough-In	13	California Closet Upgrade	27
Electric Vehicle Conduit	13	Spindle Railing Upgrade	27
Elevate Package	14	Additional Upgrades	28
Upgraded Cabinets	16	Basement Development	30
Miscellaneous	17	Upper Floor Luxury Vinyl Plank	31
Upgraded Plumbing	18	Blinds package	31
Hardware & Lighting - Black	19	Upgraded Appliances	32
Hardware & Lighting - Gold	20		
Upgraded Appliances	21		



Essentials Package

The standard in every home. Ideal for those seeking reliable finishes and smart, carefully selected features that deliver excellent value without stretching the budget.



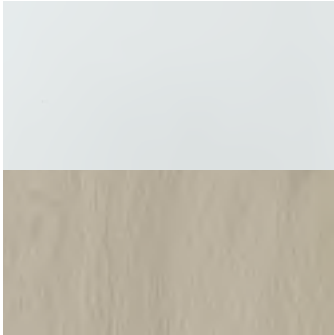
StreetSide
A QUALICO Company

Flooring & Cabinets

Essentials

Choose from one of three colour palettes, each designed to reflect a distinct style and allow you to create a home that feels uniquely yours.

Light Palette



Cabinets

Kitchen, main & ensuite
bathrooms

Brand: Kingswood
Description: Slab profile, 36"
height
Colour: Cotton Mist

Luxury Vinyl Plank

Main floor. Upgrade
Available for upper level

Brand: Ethos
Description: Luxury Vinyl
Plank
Colour: Zen

Neutral Palette



Cabinets

Kitchen, main & ensuite
bathrooms

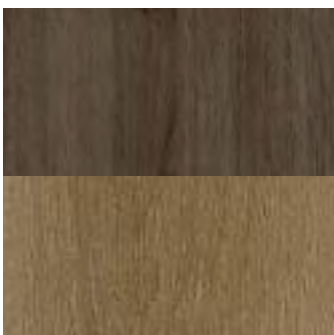
Brand: Kingswood
Description: Slab profile, 36"
height
Colour: Suede Stone

Luxury Vinyl Plank

Main floor. Upgrade
Available for upper level

Brand: Ethos
Description: Luxury Vinyl
Plank
Colour: Bliss

Dark Palette



Cabinets

Kitchen, main & ensuite
bathrooms

Brand: Kingswood
Description: Slab profile, 36"
height
Colour: First Class

Luxury Vinyl Plank

Main floor. Upgrade
Available for upper level

Brand: Ethos
Description: Luxury Vinyl
Plank
Colour: Calm

Essentials



Carpet

Bedrooms, upper level
stairs, upper level
hallway

Flooring & Cabinets



Floor Tile

All bathrooms & laundry
room

Brand: Ethos

Description: 8lb underlay

Colour: Meadow

Brand: TwelveOaks

Description: Luxury
Vinyl Tile

Colour: White Smoke

*All renderings, illustrations, and photographs are for illustrative purposes only and may not reflect the final construction details. Finishes, materials, colours, specifications, and floorplans are subject to change without notice. Actual selections and layouts may vary.

Countertops & Wall Tile

Essentials



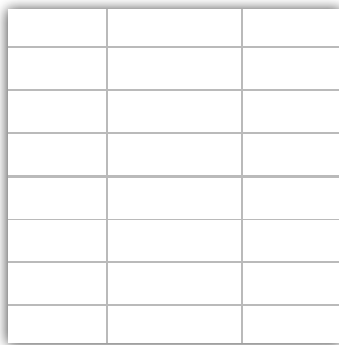
Countertop

Kitchen, main & ensuite
bathrooms

Brand: StoneGallery

Description: 3/4" Quartz

Colour: White Macchiato



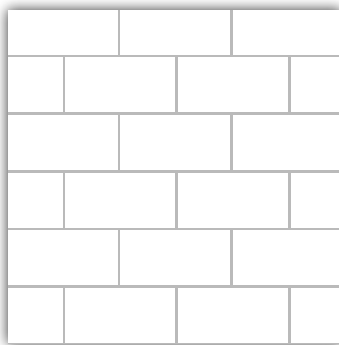
Backsplash

Kitchen

Brand: Tile & Stone Source

Description: 2"x8" ceramic
tile, straight stacked

Colour: Matte White



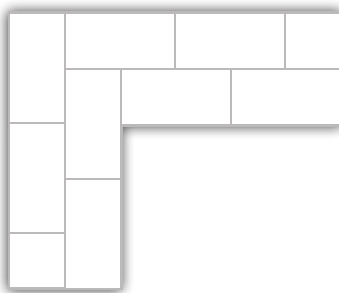
Bathroom Backsplash

Main & ensuite
bathrooms

Brand: Tile & Stone Source

Description: 3"x6" ceramic
tile, horizontal half-brick lay

Colour: Matte White



Shower tile surround

Main & ensuite
bathrooms

Brand: Tile & Stone Source

Description: 3"x6"
ceramic tile, half-brick lay
surrounding tub/shower

Colour: Matte White



Street**Side**
A QUALICO Company

Hardware & Plumbing

Essentials



Cabinet Door Pulls

All cupboards and drawers

Brand: Marathon

Description: Contemporary cabinet pull

Colour: Brushed satin nickel



Kitchen Sink

Kitchen

Brand: Blanco

Description: Stainless steel undermount kitchen sink

Colour: Satin Polish



Kitchen Faucet

Kitchen

Brand: Moen

Description: High arc kitchen faucet

Colour: Spot Resistant Stainless Steel



Pedestal Sink

Powder room

Brand: Caprice

Description: Single faucet pedestal sink

Colour: White

Essentials



Sink Faucet

Ensuite & main bathroom

Brand: Moen

Description: Single handle faucet

Colour: Chrome



Standard Toilet

All bathrooms

Brand: Conrac

Description: Standard high-efficiency toilet

Colour: White



Alcove Shower

Ensuite Bathroom

Brand: Maax

Description: One-piece alcove shower

Colour: White



Shower Trim

Ensuite bathroom

Brand: Moen

Description: Shower trim

Colour: Chrome

*All renderings, illustrations, and photographs are for illustrative purposes only and may not reflect the final construction details. Finishes, materials, colours, specifications, and floorplans are subject to change without notice. Actual selections and layouts may vary.

Hardware & Plumbing

Essentials



Alcove Tub/ Shower

Main bathroom

Brand: Maax

Description: One piece
alcove shower/tub

Colour: White



Shower Trim

Main bathroom

Brand: Moen

Description: Shower trim

Colour: Chrome



Flush Mount Light

Entryways, bedrooms, hallways, laundry room, walk-in closet

Brand: Whitfield

Description: Flush mount light

Colour: White



Chandelier Light

Living room

Brand: Signature

Description: Opal glass flush mount

Colour: Satin nickel



Pendant Light

Dining room

Brand: Signature

Description: Pendant light

Colour: Brushed nickel



Vanity light

Powder room, main & ensuite bathrooms

Brand: Signature

Description: LED bath bar
*size may vary depending on room

Colour: Brushed nickel

*All renderings, illustrations, and photographs are for illustrative purposes only and may not reflect the final construction details. Finishes, materials, colours, specifications, and floorplans are subject to change without notice. Actual selections and layouts may vary.

Appliances

Essentials



Standard Refrigerator

Kitchen

Brand: LG

Description: 30" top freezer

Colour: Stainless steel



Electric Range

Kitchen

Brand: LG

Description: Freestanding, slide in range

Colour: Stainless steel



Dishwasher

Kitchen

Brand: LG

Description: Built in dishwasher

Colour: Stainless steel



Microwave

Kitchen

Brand: LG

Description: Over the range microwave

Colour: Stainless steel



Standard Washer & Dryer

Upper level

Brand: LG

Description: Full sized, stacked, front loading

Colour: White

Air Conditioning Rough-In

Your home comes prepped and ready for a future A/C unit, making installation easier and more cost-effective later on:

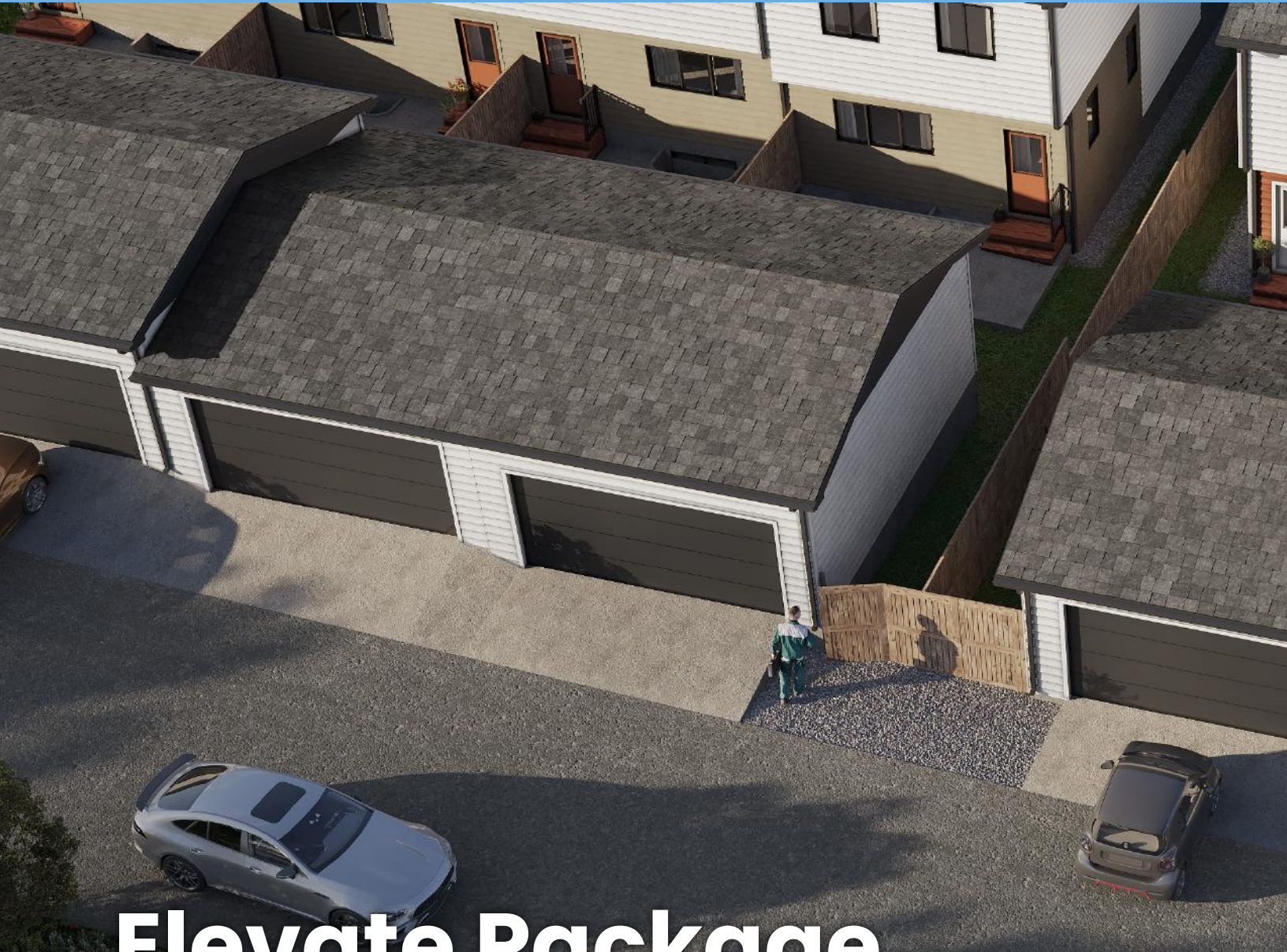
- Electrical wiring is already run from your panel to the outdoor A/C location.
- A line is in place to connect the indoor and outdoor A/C components.
- The electrical panel is sized to support the future A/C unit.
- Upgraded wiring and conduit have been installed to handle the added power.
- Control wiring is in place to connect the A/C to your furnace.

Electric Vehicle Conduit

Your garage comes prepped for a future electric vehicle charger:

- A conduit (protective tubing) is installed from the electrical system area to the garage for easy charger installation later
- The setup is designed to support a future energy management system, which helps balance power use in your home.
- This system will need to meet required safety standards and local regulations when installed.

*All renderings, illustrations, and photographs are for illustrative purposes only and may not reflect the final construction details. Finishes, materials, colours, specifications, and floorplans are subject to change without notice. Actual selections and layouts may vary.



Elevate Package

A step above the standard, offering greater style and comfort. Every tier is designed to build progressively, meaning all Essentials features carry through to Elevate unless they have been purposefully enhanced.



Street**Side**
A QUALICO Company

Upgraded Cabinets

Elevate



Additional bank of drawers

Kitchen

Description: To match cabinet selection



42" Upper Cabinets

Kitchen

Description: 42" upper cabinets with spacer to reach bulkhead (standard cabinets are 39")



Under Cabinet Lighting

Kitchen

Description: Includes one switch and LED ribbon lighting

Elevate

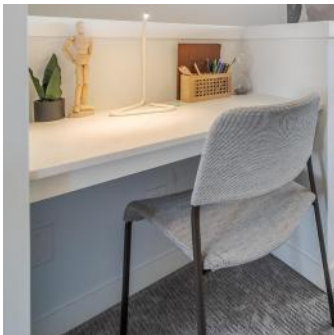
Miscellaneous



Upgraded Handrail

Upper staircase

Description: Upgraded handrail painted to match trim



Tech Desk

Kitchen Alcove

Description: Includes white gables & quartz countertop to match kitchen



*All renderings, illustrations, and photographs are for illustrative purposes only and may not reflect the final construction details. Finishes, materials, colours, specifications, and floorplans are subject to change without notice. Actual selections and layouts may vary.

Upgraded Plumbing

Elevate



Upgraded Kitchen Sink

Kitchen

Brand: Blanco

Description: Under mount Silgranite sink

Colour: Anthracite



Comfort Height Toilets

All bathrooms

Brand: Contrac

Description: Comfort height high efficiency toilet with elongated bowl

Colour: White



Upgraded Shower

Ensuite bathroom

Brand: Maax

Description: Acrylic shower base with center drain; 10mm bypass glass door

Colour: White



Shower Tile

Ensuite bathroom

Brand: Ceratec

Description: Floor to ceiling ceramic tile in shower

Colour: Gatsby Martini



Cabinet Door Pulls

All cupboards and drawers

Brand: Marathon
Description: Contemporary pull
Colour: Matte Black



Chandelier Light

Living room

Brand: Standard
Description: Semi-flush mount
Colour: Matte Black



Pendant Light

Dining room

Brand: Gwenith
Description: Dining room pendant
Colour: Matte Black



Vanity light

Powder room, main & ensuite bathrooms

Brand: Fauna
Description: Vanity lights, two light fixtures in powder room
Colour: Matte Black

*All renderings, illustrations, and photographs are for illustrative purposes only and may not reflect the final construction details. Finishes, materials, colours, specifications, and floorplans are subject to change without notice. Actual selections and layouts may vary.

Hardware & Lighting - Gold Option

Elevate



Cabinet Door Pulls

All cupboards and drawers

Brand: Marathon

Description: Contemporary pull

Colour: Gold



Chandelier Light

Living room

Brand: Standard

Description: Semi-flush mount

Colour: Gold



Pendant Light

Dining room

Brand: Leila

Description: Dining room pendant

Colour: Gold



Vanity light

Powder room, main & ensuite bathrooms

Brand: Thayer

Description: Vanity lighting, two light fixtures in powder room

Colour: Luxe Gold

Elevate

Upgraded Appliances



Electric Range

Kitchen

Brand: LG

Description: Freestanding, slide in range

Colour: Stainless Steel



Refrigerator

Kitchen

Brand: LG

Description: 30" Bottom freezer, french door with water dispenser

Colour: Stainless Steel



*All renderings, illustrations, and photographs are for illustrative purposes only and may not reflect the final construction details. Finishes, materials, colours, specifications, and floorplans are subject to change without notice. Actual selections and layouts may vary.



Exclusive Package

Designed for those who want it all, this package includes comfort focused upgrades and refined finishes that give your home a custom-built feel. It includes everything in the Elevate Package, enhanced with premium selections that deliver extra luxury throughout.



Street**Side**
A QUALICO Company

Upgraded Appliances

Exclusive



Upgraded Washer & Dryer

Upper level

Brand: LG

Description: Ultra large capacity front load washer & dryer with Steam Technology

Colour: Grey



Additional Pot Lights

4 additional lights in living room, 4 in dining room

Brand: Whitfield

Description: Flush mount light

Colour: White

Main Bath Upgrade

Skirted tub with full height wall tile. See page 18 for tile selection.





Fireplace Upgrade



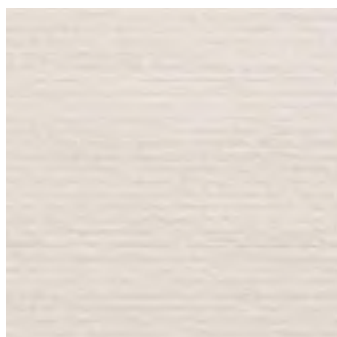
Electric Fireplace

Living room.

Brand: Napoleon

Description: 36" Electric
Fireplace

Colour: White



Fireplace Tile Surround

Brand: Haddonstone

Description: Horizontal lay

Colour: Peony, Horizon

*All renderings, illustrations, and photographs are for illustrative purposes only and may not reflect the final construction details. Finishes, materials, colours, specifications, and floorplans are subject to change without notice. Actual selections and layouts may vary.

Blinds Package

Exclusive

Blinds package includes:

- Light diffusing roller blinds in White throughout the home
- Room darkening roller blinds in Ivory in bedrooms
- Includes Valance and either a pull-string or rechargeable power wand



Finished Garage

Finished Garage Includes:

- Insulation
- Poly (vapour barrier) and drywall
- Primed drywall
- Epoxy Floors – signature flake blend
- Two additional outlets
- 6 Pot lights



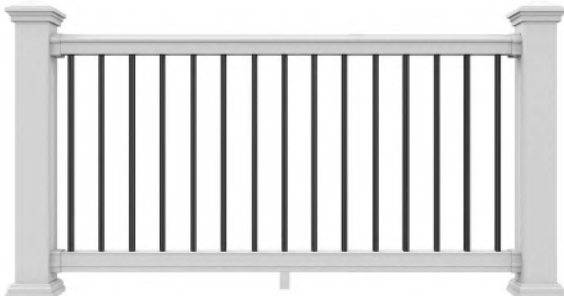
Exclusive

California Closet Upgrade

Replaces standard wire shelving in primary bedroom walk-in closet.



Spindle Railing Upgrade



Description: Upgrade upper floor stub wall to spindle railing

Colour: Black vertical balusters; white posts, handrail & base

*All renderings, illustrations, and photographs are for illustrative purposes only and may not reflect the final construction details. Finishes, materials, colours, specifications, and floorplans are subject to change without notice. Actual selections and layouts may vary.



Additional Upgrades

Available with every package, these optional upgrades provide the flexibility to further personalize your home with curated enhancements and specialty features.



StreetSide
A QUALICO Company

Basement Development

Additional Upgrades

Basement development includes:

- One bedroom with closet
- Living area
- Mechanical room
- Under stairs storage
- Framing, drywall, plumbing, fixtures and finishes to match upper level



Additional Upgrades

Blinds package

Blinds package includes:

- Light diffusing roller blinds in White throughout the home
- Room darkening roller blinds in Ivory in bedrooms
- Includes valance and your choice of pull-string or rechargeable power wand



Upper Floor Luxury Vinyl Plank

To match main floor selection.



*All renderings, illustrations, and photographs are for illustrative purposes only and may not reflect the final construction details. Finishes, materials, colours, specifications, and floorplans are subject to change without notice. Actual selections and layouts may vary.

Upgraded Appliances



Gas Range

Additional Upgrades

Brand: LG
Description: 6 cu.ft. gas range
Colour: Stainless Steel



Upgraded Washer & Dryer

Brand: LG
Description: Ultra large capacity front load washer & dryer with Steam Technology
Colour: Grey

Your Way Home

Your home is more than a collection of finishes—it's where life unfolds. At Vantage Rise, each upgrade package has been thoughtfully designed to ensure lasting style, comfort, and quality, no matter which path you choose. Whether you select Essentials, Elevate, or Exclusive packages, you can feel confident knowing your home has been carefully curated with livability in mind.

If you have questions about the packages, upgrades, or available options, our team is here to guide you every step of the way. We're happy to help you explore the possibilities and select the finishes that feel right for you.

Whatever package you choose, we know you're going to love your new Vantage Rise home—and we can't wait to welcome you!



Scan for the
Vantage Rise
home page.

Contact us

Email:

hello@streetsidehomes.com

Phone: 403-407-5841

