



Personal Touch

Health Care Apparel



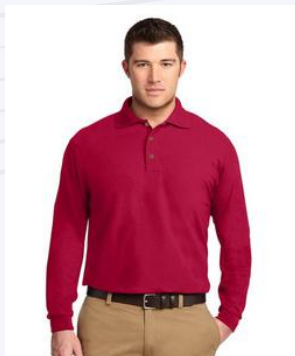
MEN'S



CLOTHING



CATALOG



MEN'S ADULT SHORT SLEEVE POLO SHIRTS



ADDRESS COMPANY

140 58TH STREET 11E
BROOKLYN NY 11220



PHONE CONTACT

1-888-626-1703
FAX: 1-718-627-0200



WEBSITE

WWW.ADAPTIVEAPPAREL.COM

ISSUE 01

MEN'S ADULT SHORT SLEEVE POLO SHIRTS



COLOR: RED



COLOR:
ASH93_249



COLOR:
FORESTGREEN33_249

STYLE CODE: SKU: POLO-S/S
SIZE: S-5XL



COLOR: GOLD24_249



COLOR:BLACK36_249



COLOR:CAROLINABLUE109_249

MEN'S ADULT SHORT SLEEVE POLO SHIRTS



COLOR: GARNET219-249



COLOR: KELLYGREEN17_249



COLOR: KELLYGREEN17_249

STYLE CODE: SKU: POLO-S/S
SIZE: S-5XL



COLOR: NAVY32_249



COLOR: ORANGE37_249



COLOR: MAROON83_249

MEN'S ADULT SHORT SLEEVE POLO SHIRTS



COLOR: PURPLE81_249



COLOR: RED40_249



COLOR: ROYALBLUE51_249



COLOR: SAFETYGREEN188-249



COLOR: SANDSNS_249



COLOR: SAPPHIRE26-249

STYLE CODE: SKU: POLO-S/S
SIZE: S-5XL

MEN'S ADULT SHORT SLEEVE POLO SHIRTS



DESCRIPTION:

- 6.0 oz per sq yd.
- 50% cotton/50% polyester.
- Preshrunk jersey knit.
- Contoured welt collar and cuffs.
- Clean finished placket with reinforced bottom box.
- Double needle bottom hem.
- Quarter-turned to eliminate center crease.
- 3 woodtone buttons.
- Moisture Wicking.
- Tag Free Label.
- Assorted colors contain 3 or more colors per dozen.
- The colors you see in the image to the left are only examples of assorted colors.
- You may or may not receive these colors.

EMBELLISHMENT METHODS:

EMBROIDERY
SCREEN PRINT
HEAT TRANSFER

STYLE CODE: SKU: POLO-S/S
SIZE: S-5XL



MEN'S LONGS SLEEVE POLO SHIRTS



ADDRESS COMPANY

140 58TH STREET 11E
BROOKLYN NY 11220



PHONE CONTACT

1-888-626-1703
FAX: 1-718-627-0200



WEBSITE

WWW.ADAPTIVEAPPAREL.COM



MEN'S LONGS SLEEVE POLO SHIRTS

DESCRIPTION:

- 7.0 oz. 100% cotton pre-shrunk pique.
- Clean finished placket with reinforced bottom box.
- 3 woodtone buttons.
- Contoured welt collar and cuffs.
- Double needle bottom hem.
- Quarter-turned to eliminate center crease.



COLOR: RED



COLOR: BLACK36-75

STYLE CODE: LS-MEN'S
SIZE: S-2XL

S-2XL

MEN'S LONGS SLEEVE POLO SHIRTS



COLOR: RED40-75



COLOR: SPORTSGREY95-75



COLOR: WHITE30-75



COLOR: NAVY32-75

STYLE CODE: LS-MEN'S
SIZE: S-2XL

S-2XL

MEN'S SHORTS WITH POCKETS



ADDRESS COMPANY

140 58TH STREET 11E
BROOKLYN NY 11220



PHONE CONTACT

1-888-626-1703
FAX: 1-718-627-0200



WEBSITE

WWW.ADAPTIVEAPPAREL.COM

MEN'S SHORTS WITH POCKETS



COLOR: NAVY32-1898

DESCRIPTION:

- 5.5 oz 100% Polyester .
- Aquafx® for wicking properties
- Freshcare® for anti-microbial properties
- Multi needle waistband with contrast color drawcord
- Snag resistant
- Side pockets with contrast color pocket bag
- Double-needle bottom hem



COLOR: BLACK36_1898



COLOR: CHARCOAL42-1898

STYLE CODE: 44S30
SIZES: S-4XL

MEN'S SHORTS WITH POCKETS



COLOR: RED40-1898



COLOR: SPORTGREY95-1898

STYLE CODE: 44S30
SIZES: S-4XL

MEN'S CREWNECK SWEATSHIRTS



ADDRESS COMPANY

140 58TH STREET 11E
BROOKLYN NY 11220



PHONE CONTACT

1-888-626-1703
FAX: 1-718-627-0200



WEBSITE

WWW.ADAPTIVEAPPAREL.COM



MEN'S CREWNECK SWEATSHIRTS

DESCRIPTION:

- 50% cotton 50% polyester preshrunk fleece knit.
- Air jet yarn = softer feel and reduced pilling.
- Double needle stitching at shoulders, armholes, neck, waistband and cuffs.
- 1 x 1 rib with spandex.
- Tear away label.
- Quarter-turned to eliminate center crease.



COLOR: RED



COLOR: BLACK36-634

SIZES: S - 5XL

MEN'S CREWNECK SWEATSHIRTS



COLOR: HELICONIA10-634



COLOR:IRISHGREEN167_634



COLOR: FORESTGREEN33-634



**COLOR:
DARKCHOCOLATE105-634**



COLOR: GOLD24-634



**COLOR:
DARKHEATHERGREY108-634**

SIZES: S - 5XL

MEN'S CREWNECK SWEATSHIRTS



COLOR: LIGHTBLUE69-634



COLOR: NAVY32-634



COLOR: MAROON83-634



COLOR: PURPLE81-634



COLOR: LIGHTPINK20-634



COLOR: ROYALBLUE51-634

SIZES: S - 5XL

MEN'S CREWNECK SWEATSHIRTS



COLOR: RED40-634



COLOR: ORANGE37-634



COLOR: SANDSNS-634



COLOR: SAFETYGREEN188-634



COLOR: WHITE30-634



COLOR: SPORTSGREY95-634

SIZES: S - 5XL



MEN'S SHORT SLEEVE COLORED T-SHIRTS



ADDRESS COMPANY

140 58TH STREET 11E
BROOKLYN NY 11220



PHONE CONTACT

1-888-626-1703
FAX: 1-718-627-0200



WEBSITE

WWW.ADAPTIVEAPPAREL.COM

MEN'S SHORT SLEEVE COLORED T-SHIRTS


Personal Touch
Health Care Apparel



DESCRIPTION:

- 100% cotton preshrunk jersey knit.
- Classic fit.
- Seamless double needle 7/8" collar.
- Quarter-turned to eliminate center crease.
- Tapped neck and shoulders.
- Tear away label.
- Double needle sleeve and bottom hems.
- Fiber content varies by color, see color list for exceptions.

COLOR: BLUEGREEN



COLOR: ANTIQUEROYAL253-58



COLOR: AZALEA71-58



COLOR: ASH93-58



COLOR: BLACK36-58

SIZES: S-5XL

MEN'S SHORT SLEEVE COLORED T-SHIRTS


Personal Touch
Health Care Apparel



COLOR: RED40-634



COLOR: RED40-634



COLOR: RED40-634



COLOR: RED40-634



COLOR: GOLD24-58



**COLOR:
HEATHERNAVY170-58**



**COLOR:
FORESTGREEN33-58**



**COLOR:
DARKHEATHERGREY10
8-58**

SIZES: S-5XL

MEN'S SHORT SLEEVE COLORED T-SHIRTS


Personal Touch
Health Care Apparel



COLOR:
HEATHERSAPPHIRE217
-58



COLOR:
INDIGOBLUE80-58



COLOR:
HELICONIA10-58



COLOR: ICEGREY23-58



COLOR:
IRISHGREEN167-58



COLOR: IRIS56-58



COLOR:
KELLYGREEN17-58



COLOR:
JADEDOME29-58

SIZES: S-5XL

MEN'S SHORT SLEEVE COLORED T-SHIRTS


Personal Touch
Health Care Apparel



COLOR:
HEATHERSAPPHIRE217
-58



COLOR:
INDIGOBLUE80-58



COLOR:
HELICONIA10-58



COLOR: ICEGREY23-58



COLOR:
MILITARYGREEN106-58



COLOR:NATURAL31-58



COLOR: MAROON83-58



COLOR:METROBLUE78
-58

SIZES: S-5XL

MEN'S SHORT SLEEVE COLORED T-SHIRTS



DESCRIPTION:

- 100% cotton preshrunk jersey knit.
- Classic fit.
- Seamless double needle 7/8" collar.
- Quarter-turned to eliminate center crease.
- Tapped neck and shoulders.
- Tear away label.
- Double needle sleeve and bottom hems.
- Fiber content varies by color, see color list for exceptions.

COLOR: BLUEGREEN



COLOR:
NAVY32_58



COLOR:
PAPRIKA190_58



COLOR:
OLIVEGREEN39-58



COLOR: ORANGE37-58

SIZES: S-5XL

MEN'S SHORT SLEEVE COLORED T-SHIRTS


Personal Touch
Health Care Apparel



COLOR:
PFDWHITE30P-58



COLOR:
SAFETYPINK263-58



COLOR:
SAFETYORANGE193-58



COLOR:
PRAIRIEDUST67-58



COLOR:
PISTACHIO168-58



COLOR: PURPLE81-58



COLOR: RED40-58



COLOR:
ROYALBLUE51_58

SIZES: S-5XL

MEN'S SHORT SLEEVE COLORED T-SHIRTS



DESCRIPTION:

- 100% cotton preshrunk jersey knit.
- Classic fit.
- Seamless double needle 7/8" collar.
- Quarter-turned to eliminate center crease.
- Tapped neck and shoulders.
- Tear away label.
- Double needle sleeve and bottom hems.
- Fiber content varies by color, see color list for exceptions.

COLOR: BLUEGREEN



COLOR:
SAFETYPINK263-58



COLOR:
SPORTSGREY95-58



COLOR:
SAFETYORANGE193-58



COLOR: SKY187-58

SIZES: S-5XL

MEN'S SHORT SLEEVE COLORED T-SHIRTS



DESCRIPTION:

- 100% cotton preshrunk jersey knit.
- Classic fit.
- Seamless double needle 7/8" collar.
- Quarter-turned to eliminate center crease.
- Tapped neck and shoulders.
- Tear away label.
- Double needle sleeve and bottom hems.
- Fiber content varies by color, see color list for exceptions.

COLOR: BLUEGREEN



**COLOR:
TANGERINE35-58**



COLOR: TAN91-58



COLOR: WHITE30-58



**COLOR: VEGASGOLD19
-58**

SIZES: S-5XL

MEN'S ADULT T-SHIRT WITH POCKET


Personal Touch
Health Care Apparel



ADDRESS COMPANY

140 58TH STREET 11E
BROOKLYN NY 11220



PHONE CONTACT

1-888-626-1703
FAX: 1-718-627-0200



WEBSITE

WWW.ADAPTIVEAPPAREL.COM

SKU: Men's-Pocket-Tee

MEN'S ADULT T-SHIRT WITH POCKET


Personal Touch
Health Care Apparel



DESCRIPTION:

- Classic fit.
- Seamless double needle 7/8" collar.
- Single needle left chest set pocket.
- Tapped neck and shoulders.
- Tear away label.
- Double needle pocket and sleeve hems .
- Quarter-turned to eliminate center crease.



COLOR: GOLD24-61



**COLOR:
DARKCHOCOLATE105-61**



COLOR: ASH93-61



**COLOR:
FORESTGREEN33-61**

MEN'S ADULT T-SHIRT WITH POCKET


Personal Touch
Health Care Apparel



COLOR: BLACK36-61



COLOR: ORANGE37-61



COLOR: RED40-61



COLOR:SAFETYGREEN188-61



COLOR: ROYALBLUE51-61



COLOR: WHITE30-61



COLOR: SAFETYPINK263-61



COLOR: SPORTSGREY95-61



COLOR: NAVY32-61

SIZES: SM-M-LG-XL-2XL-3XL-4XL-5XL-6XL

MEN'S LONG SLEEVE COLORED T-SHIRTS



ADDRESS COMPANY

140 58TH STREET 11E
BROOKLYN NY 11220



PHONE CONTACT

1-888-626-1703
FAX: 1-718-627-0200



WEBSITE

WWW.ADAPTIVEAPPAREL.COM

ADULT LONG SLEEVE COLORED T-SHIRTS

DESCRIPTION:

- 100% cotton preshrunk jersey knit.
- Classic fit.
- Seamless double needle 7/8" collar.
- Quarter-turned to eliminate center crease.
- Tapped neck and shoulders.
- Tear away label.
- Double needle sleeve and bottom hems.
- Fiber content varies by color, see color list for exceptions.



COLOR: GRAY



COLOR: FORESTGREEN33_65



COLOR: ASH93-65



COLOR: BLACK36-65

STYLE CODE: 54

SIZE: S-2XL

ADULT LONG SLEEVE COLORED T-SHIRTS



COLOR: MAROON83-65



COLOR: IRISHGREEN167-65



COLOR: NAVY32-65



COLOR: RED40-65



COLOR: PURPLE81-65



COLOR: ROYALBLUE51-65

STYLE CODE: 54
SIZE: S-2XL

ADULT LONG SLEEVE COLORED T-SHIRTS



COLOR: SPORTSGREY95-65



COLOR:SAFETYORANGE193-65



**COLOR:
SAFETYGREEN188-65**



COLOR: WHITE30-65

STYLE CODE: 54
SIZE: S-2XL



ADULT SWEATPANTS



ADDRESS COMPANY

140 58TH STREET 11E
BROOKLYN NY 11220



PHONE CONTACT

1-888-626-1703
FAX: 1-718-627-0200



WEBSITE

WWW.ADAPTIVEAPPAREL.COM



Personal Touch
Health Care Apparel

ADULT SWEATPANTS



COLOR: ROYALBLUE51-70

DESCRIPTION:

- 50% cotton/50% polyester preshrunk fleece knit.
- Air jet yarn = softer feel and reduced pilling.
- Double needle bottom hems.
- Covered elastic waistband with drawcord. (Can be removed)
- Elasticized Cuffs.



COLOR: ASH93-70



COLOR: SPORTSGREY95-70



COLOR: RED40-70

SIZES: SMALL-MED-LG-XL-2XL

ADULT SWEATPANTS


Personal Touch
Health Care Apparel



COLOR: FORESTGREEN33-70



COLOR: NAVY32-70



COLOR: BLACK36-70



COLOR: SPORTSGREY95-70

SIZES: SMALL-MED-LG-XL-2XL

MEN'S ADAPTIVE NIGHTSHIRTS


Personal Touch
Health Care Apparel

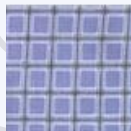


COLOR: ASSORTED COLORS AND PRINT

DESCRIPTION:

- Made Of Poly Cotton.
- Snaps all the way down for easy dressing
- Long sleeves for extra warmth
- Size Med-LG-XL-2XL

01



02



03



04



05



06



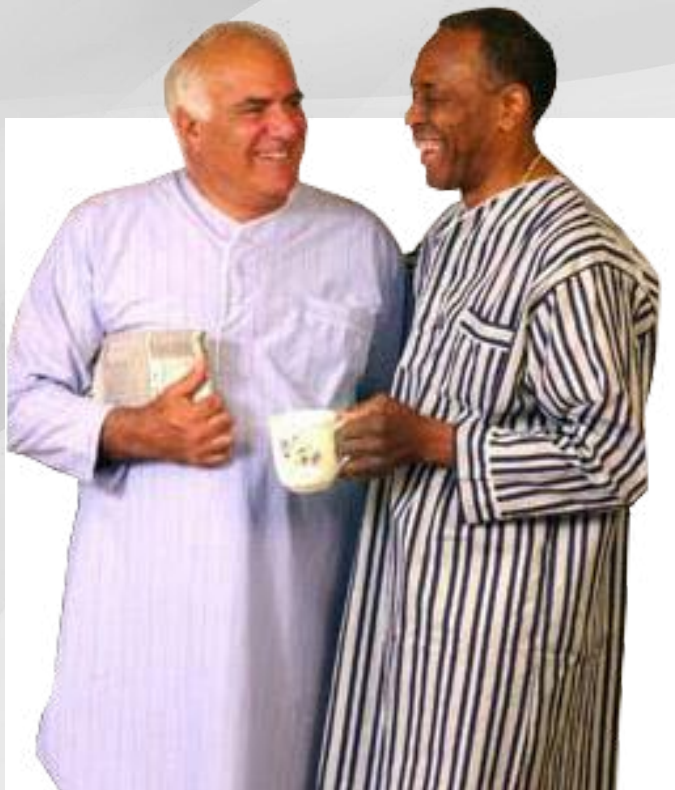
07



SIZE MED-LG-XL-2XL

MEN'S SLEEPWEAR


Personal Touch
Health Care Apparel



ADDRESS COMPANY

140 58TH STREET 11E
BROOKLYN NY 11220



PHONE CONTACT

1-888-626-1703
FAX: 1-718-627-0200



WEBSITE

WWW.ADAPTIVEAPPAREL.COM

MEN'S PULLOVER NIGHTSHIRTS


Personal Touch
Health Care Apparel



COLOR: ASSORTED COLORS AND PRINT

DESCRIPTION:

- Easy to sleep in pullover night shirts has 3 snaps in the front for easy dressing and sleeping. Please note, this nightshirt was designed for people who can not wear pajamas at night, unlike pajamas they have no bottoms and are much easier to care for.
- Are you always losing your pajama bottoms because your staff doesn't want to wash them because they are badly soiled? This is the perfect item for you. Available in assorted prints.

01



02



03



04



05



06



07



08



SIZES: M-L-XL -2XL

MEN'S POLY COTTON PAJAMAS



01



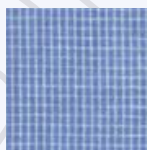
02



03



04



05



06



COLOR: ASSORTED COLORS AND PRINT
SKU# : M345PC

DESCRIPTION:

- Full Cut
- Long Sleeve Button Down Shirt With Pocket
- Long Leg With Elastic Waist
- 55% Cotton 45% Poly

SIZES: M-L-XL -2XL

MEN'S BIG SIZE PAJAMAS



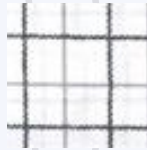
01



02



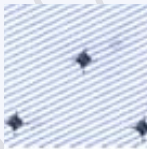
03



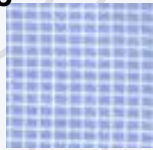
04



05



06



07



COLOR: ASSORTED COLORS AND PRINT

SKU# : M345PC

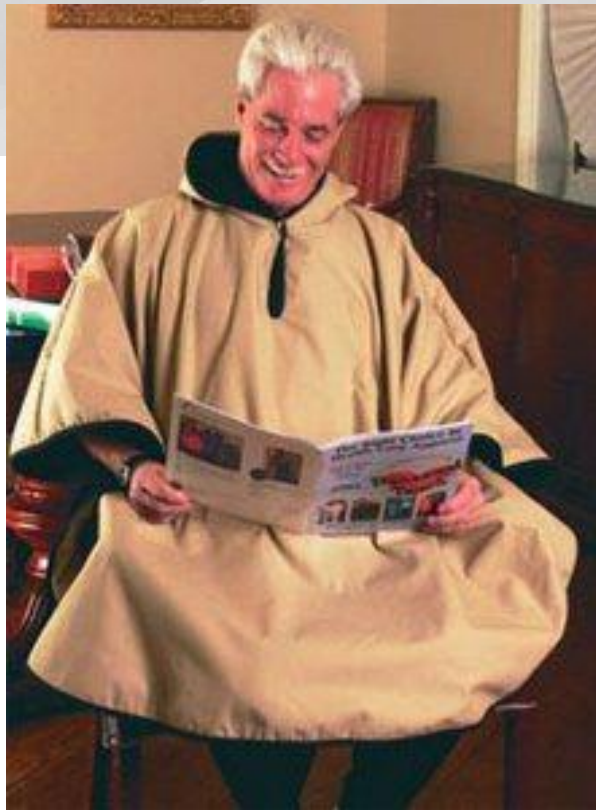
DESCRIPTION:

- Full out Men's Pajamas
- Long Sleeve Button Down Shirt With Pocket
- Long Leg Pant With Elastic Waist
- Made of 80% Cotton 20% Poly
- Size 4X (chest Measurement 58-60 Weight 265-285).

SIZES: 2XL-3XL-4XL

MEN'S UNISEX WHEELCHAIR PONCHO


Personal Touch
Health Care Apparel



ADDRESS COMPANY

140 58TH STREET 11E
BROOKLYN NY 11220



PHONE CONTACT

1-888-626-1703
FAX: 1-718-627-0200

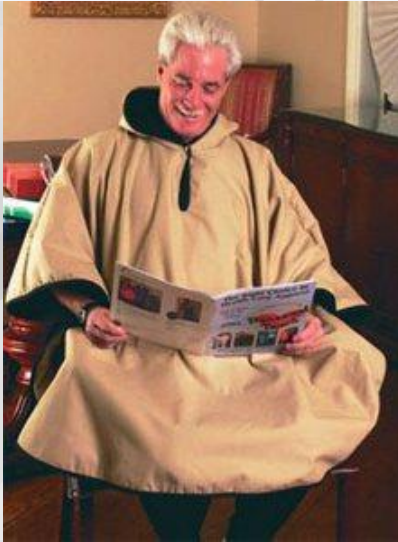


WEBSITE

WWW.ADAPTIVEAPPAREL.COM

MEN'S UNISEX WHEELCHAIR PONCHO


Personal Touch
Health Care Apparel



COLOR: GREY, BLACK, BROWN, BEIGE, LIGHT BLUE, NAVY BLUE, PINK AND YELLOW

SKU#: U507-B

DESCRIPTION:

- Fleece lined
- Pullover for easy on easy off
- Hood with snap
- One side snap by each arm

BEIGE



PINK



BLACK



BROWN



LIGHT BLUE



NAVY



YELLOW



Colors: Grey, Black, Brown, Beige,
Light Blue, Navy Blue,
Pink and Yellow.
Style Code: U507-B

MEN'S BREIFS




Personal Touch
Health Care Apparel

Colors: White

Sku#: M360



ADDRESS COMPANY

140 58TH STREET 11E
BROOKLYN NY 11220



PHONE CONTACT

1-888-626-1703
FAX: 1-718-627-0200



WEBSITE

WWW.ADAPTIVEAPPAREL.COM

MEN'S BREIFS



DESCRIPTION:

- 60% cotton/40% polyester.
- Wide elastic waistband.
- Convenient fly front.
- 12 piece in a clear polybag.

Sku#: M360


Personal Touch
Health Care Apparel

SIZES: S-6XL

• SOLD IN DOZENS

MEN'S BOXER SHORTS


Personal Touch
Health Care Apparel



MEN'S BOXER SHORTS



COLOR: ASSORTED99_683

SIZE: SM-M-LG-XL-2XL-3XL-4XL-5XL

DESCRIPTION:

- 65% polyester 35% cotton.
- Fine cotton fabric with double layer fly front.
- Providing better fit and breathability.
- Superior quality elastic band.
- Full cut leg opening.
- Long lasting durability.
- Ensuring all day comfort.
- Sold in increments of 12.

MEN'S CREW SOCKS


Personal Touch
Health Care Apparel



ADDRESS COMPANY

140 58TH STREET 11E
BROOKLYN NY 11220



PHONE CONTACT

1-888-626-1703
FAX: 1-718-627-0200



WEBSITE

WWW.ADAPTIVEAPPAREL.COM

MEN'S CREW SOCKS



COLOR: WHITEGREYHEELTOEHT_215



DESCRIPTION:

- 80% cotton/20% polyester.
- 3 Pair in a band roll with J-Hook.

Details:

- These Crew Socks are comfort & flexible. comes in sizes 9-11 & 10-13 are perfect for a variety of occasions ,From everyday use to special events, and keep your feet comfortable all day. They are in 3 pairs per band. 80% Cotton , 20% Polyester.

SIZES: L-XL

L=9-11

XL=10-13

2X = 13-15

MEN'S CREW SOCKS


Personal Touch
Health Care Apparel



COLOR: BURNTORANGE44_215

DESCRIPTION:

- 80% cotton/20% polyester.
- 3 Pair in a band roll with J-Hook.

Details:

- These Crew Socks are comfort & flexible. comes in sizes 9-11 & 10-13 are perfect for a variety of occasions ,From everyday use to special events, and keep your feet comfortable all day. They are in 3 pairs per band. 80% Cotton , 20% Polyester.



SIZES: L-XL

L=9-11

XL=10-13

2X = 13-15

MEN'S CREW SOCKS


Personal Touch
Health Care Apparel



COLOR: SPORTGREYGRY_215

DESCRIPTION:

- 80% cotton/20% polyester.
- 3 Pair in a band roll with J-Hook.

Details:

- These Crew Socks are comfort & flexible. comes in sizes 9-11 & 10-13 are perfect for a variety of occasions ,From everyday use to special events, and keep your feet comfortable all day. They are in 3 pairs per band. 80% Cotton , 20% Polyester.



SIZES: L-XL

L=9-11

XL=10-13

2X = 13-15

MEN'S CREW SOCKS


Personal Touch
Health Care Apparel



COLOR: BLACKBLK-215

DESCRIPTION:

- 80% cotton/20% polyester.
- 3 Pair in a band roll with J-Hook.

Details:

- These Crew Socks are comfort & flexible. comes in sizes 9-11 & 10-13 are perfect for a variety of occasions ,From everyday use to special events, and keep your feet comfortable all day. They are in 3 pairs per band. 80% Cotton , 20% Polyester.



SIZES: L-XL

L=9-11

XL=10-13

2X = 13-15

MEN'S CREW SOCKS



COLOR: BROWNFS1B_215

DESCRIPTION:

- 80% cotton/20% polyester.
- 3 Pair in a band roll with J-Hook.

Details:

- These Crew Socks are comfort & flexible. comes in sizes 9-11 & 10-13 are perfect for a variety of occasions ,From everyday use to special events, and keep your feet comfortable all day. They are in 3 pairs per band. 80% Cotton , 20% Polyester.



SIZES: L-XL

L=9-11

XL=10-13

2X = 13-15

MEN'S TUBE SOCKS


Personal Touch
Health Care Apparel



ADDRESS COMPANY
140 58TH STREET 11E
BROOKLYN NY 11220



PHONE CONTACT
1-888-626-1703
FAX: 1-718-627-0200



WEBSITE
WWW.ADAPTIVEAPPAREL.COM

MEN'S TUBE SOCKS


Personal Touch
Health Care Apparel



COLOR: WHITE30_359



COLOR: GREY94G_359_02

DESCRIPTION:

- Size 6-8 = 15 inch long.
- Size 9-11 = 17 inch long.
- Size 10-13 = 19 inch long.
- 80% cotton/20% polyester.
- Great for institutional use.

SIZES: M-XL

M = 6-8

L = 9-11

XL=10-13

MEN'S TUBE SOCKS


Personal Touch
Health Care Apparel



COLOR: BURNTORANGE44-359

DESCRIPTION:

- Size 6-8 = 15 inch long.
- Size 9-11 = 17 inch long.
- Size 10-13 = 19 inch long.
- 80% cotton/20% polyester.
- Great for institutional use.



SIZES: M-XL

M = 6-8

L = 9-11

XL=10-13

MEN'S TUBE SOCKS


Personal Touch
Health Care Apparel



COLOR: BROWNFS1B-359_02

DESCRIPTION:

- Size 6-8 = 15 inch long.
- Size 9-11 = 17 inch long.
- Size 10-13 = 19 inch long.
- 80% cotton/20% polyester.
- Great for institutional use.



SIZES: M-XL

M = 6-8

L = 9-11

XL=10-13

MEN'S TUBE SOCKS


Personal Touch
Health Care Apparel



COLOR: BLACK36_359_02

DESCRIPTION:

- Size 6-8 = 15 inch long.
- Size 9-11 = 17 inch long.
- Size 10-13 = 19 inch long.
- 80% cotton/20% polyester.
- Great for institutional use.



SIZES: M-XL

M = 6-8

L = 9-11

XL=10-13

MEN'S THERMAL UNDERWEAR SET TOP AND BOTTOM



Colors: Black Or white
SKU: Thermals


Personal Touch
Health Care Apparel

MEN'S THERMAL UNDERWEAR SET TOP AND BOTTOM


Personal Touch
Health Care Apparel

DESCRIPTION:

- (Black or White) 60% Cotton
40% Polyester.
- 100% Cotton
- Comfortable armholes.
- Double stitched.
- Hemmed bottom.
- Individually packaged.
- Great for inner wear and will keep you warm.



COLOR: BLACK36_591



COLOR: WHITE30_591

**SIZE: S-5XL,
12 PCS PER SIZE**

MEN'S A-LINE SHIRTS



ADDRESS COMPANY

140 58TH STREET 11E
BROOKLYN NY 11220



PHONE CONTACT

1-888-626-1703
FAX: 1-718-627-0200



WEBSITE

WWW.ADAPTIVEAPPAREL.COM



Personal Touch
Health Care Apparel

MEN'S A-LINE SHIRTS


Personal Touch
Health Care Apparel



DESCRIPTION:

- 100% combed ringspun cotton.
- Super soft for natural softness.
- Great summer wear and nightwear.

Packed 1 piece per polybag.



COLOR: WHITE30_539



COLOR: BLACK36-539

Colors: White or Black



Personal Touch **Health Care Apparel**



ADDRESS COMPANY

**140 58TH STREET 11E
BROOKLYN NY 11220**



PHONE CONTACT

**1-888-626-1703
FAX: 1-718-627-0200**



WEBSITE

WWW.ADAPTIVEAPPAREL.COM

