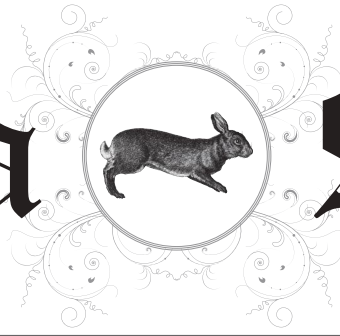


Winchelsea Star

Price \$1



Your Weekly Community Newspaper

Since 1977

Vol 46 Ed 4

Tuesday 14 February 2023

winchelseastar.org.au

Let us help celebrate 60 years anniversary of service given to us by our Community Pool, knowing that it comes to an end on 19 February 2023, after which, plans to replace it will be implemented (See p. 3)



WINCHELSEA
Pool

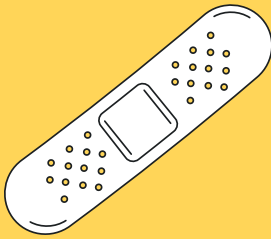


60th Anniversary Celebration
SUNDAY 19 FEB



THIS SUMMER, IF WE DON'T GET COVID WE CAN'T SPREAD COVID.

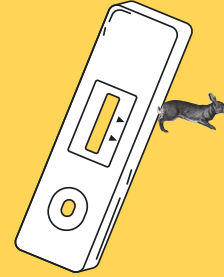
Staying well this summer can be as easy as



staying up to date with your booster vaccine.



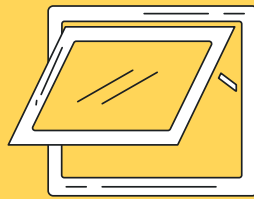
talking to your doctor: if you are at risk of becoming unwell, you may be eligible for COVID medicines.



always testing with a RAT if you feel unwell.



staying home if you feel unwell.



catching up outdoors or in places with open doors and windows.



wearing a mask when it's crowded indoors.

[Q coronavirus.vic.gov.au](https://coronavirus.vic.gov.au)

STAY WELL THIS SUMMER



Make a splash for the 60th anniversary of Winchelsea Pool

A fun-filled day awaits at Winchelsea Pool on Sunday 19 February, with people invited to a celebration event to mark the end of an era for the much-loved facility.

The free event will be held from 12pm to 6pm, featuring games, activities, food and giveaways.

Attendees will help celebrate the final season of the Winchelsea Pool in its current form, before it is revamped into a new and exciting aquatic facility.

Surf Coast Shire Councillor Adrian Schonfelder said the celebration event was being held almost 60 years to the day since the grand opening of the pool.

“The pool first opened in 1963. Due to its ageing infrastructure and equipment, it’s time for it to be renewed so it can continue to support the health and wellbeing of locals and visitors,” Cr Schonfelder said.

“Thank you to community members who have contributed input to the revamp project, including selecting a preferred concept design which proposes to replicate the main pool, enlarge the medium pool and include a new splash park and amenity building.”

At the end of the 2022-23 pool season, Surf Coast Shire Council will tender for a design and construction contract, develop

WINCHELSEA Pool

Surf COAST SHIRE

60th Anniversary Celebration

SUNDAY 19 FEB

Giveaways, Games and Fun

FREE ENTRY

a detailed design, and then move into the construction stage for the new facility. The pool will be out of action for at least one season.

“Thank you to the Winchelsea and surrounding community for their support and patience during the upcoming closure and revamp of the Winchelsea Pool,” Cr Schonfelder said.

“The event on 19 February is a great way for people to celebrate as we prepare to

close this chapter and dive into what’s next.”

For more information and to stay up-to-date with the project, visit surfcoast.vic.gov.au/winchpool.

The pool’s opening hours are 12pm to 6pm, seven days a week (except for Catastrophic Fire Danger Rating days). The final day of this summer’s pool season will be Monday 13 March 2023 - the Labour Day long weekend.

DEVELOP

Surf Coast Shire Council is committed to fostering an environment where people with clever and creative ideas can make a difference.

DEVELOP supports creatives to explore new directions, ideas and concepts to advance their practice and/or their careers. It provides individual creative practitioners up to **\$3000** and creative collectives up to **\$5000** to undertake:

- Intensive creative research and development of new ideas/concepts
- Practice-based experimentation

KEY DATES

DEVELOP Applications Open: Wednesday 1 February, 2023

DEVELOP Applications Close: 5pm Tuesday 28 February, 2023

Funds will be available approximately 6 weeks after the closing date.

surfcoast.vic.gov.au/ArtistCreativeGrants

Surf COAST SHIRE

Winchelsea Community Market

Shire Hall
9am - 1pm

MARKET dates for 2023

1 st January	2 nd July
5 th February	6 th August
5 th March	3 rd September
2 nd April	8 th October
7 th May	5 th November
4 th June	3 rd December



KNOW THE COLOURS

TAKE THE ACTIONS TO SURVIVE



Across Australia, the Fire Danger Rating system has changed. Using real-time scientific data, it now gives you a more accurate rating of the risk level if a fire was to start in your area. Each colour represents the actions you need to take to stay safe. If it's red, the fire risk is Catastrophic, so you need to pack your bags and leave immediately. Don't wait around to see if the conditions improve.

Plan. Act. Survive.

For more information on the new simpler and smarter Fire Danger Ratings, search **Fire Danger Ratings**.

Authorised by the Victorian Government, 1 Treasury Place, Melbourne





Winchelsea Probus remembers Ash Wednesday



President Kelvin Russell, Daryl Wilson and Jenny Sydenham.

Winchelsea Probus always enjoys a speaker at their monthly meetings. This month Daryl Wilson stepped in at the last minute and told us of his experiences with Winchelsea CFA on Ash Wednesday, February 16th 1983.

How many private firefighting vehicles were involved and not a lot of control from the powers that be. Nothing like the organisation it is today as they have learnt from experiences, some good some bad.

He mentioned so many familiar names of who helped on the day and how different it was then to how fires are run today.

Our speakers officer Jenny Sydenham also told of her memories, being a teacher at Deans Marsh School on the day and of also being a farmer and what she did trying to save their stock, her husband Barry obviously being elsewhere helping.

Our President Kelvin and his wife Sue were on holiday in Lorne and they told their story and showed photos depicting how enormous the fire was. Other members brought pictures and recounted their memories of the day. Most of them saying they have a memory lapse of the height of the danger. I think it's called survival mode.

All in all a fitting tribute to commemorate the 40th anniversary of one of Victoria's greatest tragedies.

HESSE RURAL HEALTH ANNUAL GENERAL MEETING

Hesse Rural Health's 2022 Annual General Meeting will be held at The Hub, Eastern Reserve, Winchelsea and via Zoom on Tuesday 21st February, 2023 at 6pm.

Please contact Hesse on (03) 5267 1200 or reception@hesse.vic.gov.au to RSVP and receive the remote link invitation.

BUSINESS:

To receive the report of the Board of Directors and the audited Statements of Accounts for the year ended 30 June 2022.



SIMPLE STORAGE SOLUTIONS

- Personal & Business Storage
- Boat, Caravan & Vehicle Storage
- High Security Premises
- Individually Alarmed Units
- Electric Gate Access
- 7 Day Access & CCTV

YOUR STORAGE PROBLEMS SOLVED

5267 3116

6 ALSOP DRIVE, WINCHELSEA 3241



Winchelsea Girl Guides are seeking volunteers

Winch Guides are looking for female adult volunteers interested in joining an enthusiastic, self-motivated team working with girls 5-15yrs in Winchelsea.

Training provided free. Membership of a world wide organisation, travel opportunities, and friendships.

Help us to provide leadership development opportunities for girls and young women, as well as promoting fun and friendship.

Phone Yvonne 0448 673 630 or Bonnie 0401 386 274

WINCH HOUSE



Reaching into the community



Neighbourhood Houses
The heart of our community



SURF COAST

Local carers are invited to Surf Coast Pathways for Carers - a leisurely walk to connect with each other, connect with nature and learn about services and supports.

Monday 20 February 2023. Meet at 9.45am

The 2km accessible walk starts at Anglesea Changing Places facility car park - 78 Great Ocean Road. Join us for morning tea after the walk.

The walk will become a regular event, being held on the third Monday of the month.

To learn more and book, please visit
surfcoast.vic.gov.au/PathwaysForCarers



Winchelsea Uniting Church

Hesse St, Winchelsea 3241
uca.winchelsea@gmail.com
0475 777 301
Services 9.30am Sundays

St John's Catholic Church

Harding St, Winchelsea 3241
Father Joseph Panackal
0404598558

St Thomas' Anglican Church

Barwon Tce, Winchelsea
Rev'd A. Lynne Clarke
stthomaswac@gmail.com
0477 672 042

Thought for the Week

"Teach me how to quiet
my racing, rising heart.
So, I might hear the answer
you are trying to impart.
Teach me to let go, dear God,
and pray undisturbed until
my heart is filled with inner peace,
and I learn your will."

John Bader
Accredited Lay Preacher

Remembering Winchelsea Pool



Construction of Swimming Pool, Winchelsea 1962

Official Opening 9 February 1963

*Photo supplied by
Winchelsea Historical Society*

By Mick O'Mara

A Little Bit of History

Fifty years ago at Easter my family and I arrived to inspect a property on Dicksons Rd. We knew very little about Winchelsea as, if you wanted to get from the little village we lived in near Warrnambool to Geelong or Melbourne, it was easier to go via Mortlake and the Hamilton Highway.

We were very impressed with the stone house on the river and went for a tour around Winchelsea to see what the town had to offer. We were amazed to find a beautiful swimming pool. Back in those days small towns the size of Winchelsea rarely had swimming pools.

Well, we bought the stone house and used it for a "weekender" while I served out my teaching contract for 1973 at my little rural school out West. When the school year finished we relocated to Dicksons Road and I was fortunate enough to get a teaching position at Winchelsea Higher Elementary School for 1974.

A few days into the new school year the Principal, John White, came to me with a proposition. "The Winch pool committee were about to have their annual meeting. How about you go to the meeting as a representative of the school?" Being a slow thinker I couldn't think of any reason why I shouldn't be

the school rep. on the Pool Committee so I turned up for the Annual Meeting.

At the Annual Meeting I discovered that the Winchelsea Lions Club had a lot to do with the building of the Winch pool and Lion Jack Schroeter had been the Pool President since the time the pool was built, (about 10 years), but did not wish to continue. The question was put to me, "Was I happy to be President?" As I said earlier, being a slow thinker, I couldn't think of any reason other than I knew nothing about swimming pools, so I was elected unopposed, President of the Winchelsea Swimming Pool.

I had a steep learning curve. The other members of the committee were a great help. The pool managers, Barb Holmes and Lesley Berg were brilliant teachers and I learnt how pools worked.

Winch was very unusual in that it was operated by a committee. Barb and Lesley were somewhat flexible in their operating hours. If it was still hot at normal closing time of 6pm they stayed open until the swimmers decided they had enough.

However money was always short. In my first year as President we ran a New Years Eve Fancy Dress Ball with the "Knucks" as the band. I remember that I dressed as a miner and wheeled my partner to the Globe in a wheelbarrow. It was great fun but the purpose for the Ball was to raise money

to keep the pool open. The Pool Committee put their problems to the Winchelsea councillors and a grant was made available. Eventually Winch Shire, and then Surfcoast, took over running the pool.

Ash Wednesday ended my time as Pool President. The fire started in Deans Marsh and the Northerly took it to Lorne. Then the change came through and that brought the smoke and embers over Winchelsea before changing again to a Westerly that took the fire through Anglesea. During the Southerly I turned the hose on to fill the gutters. So did every one else. The water flow out of the hose could best be called miserable! I decided to put in our own pool with a fire pump attached to meet future Ash-Wednesdays. I felt having my own pool made my position as President of the Winch pool untenable. If I remember correctly, Jack's son, Harry Schroeter, took over as President, Harry followed in his father's footprints and did a great job as President.

In this Star you find an invitation to celebrate our appreciation for the enjoyment we have had over 60 years with our beautiful pool. Sadly it is no longer fit for purpose and will be replaced with a new pool. Appreciation Date is this Sunday, 19th February. Details can also be found by entering "Winchelsea Pool Revamp" into Google.

Winchelsea Star

Articles are most welcome and must carry the name and address of the sender.

Weekly deadline is 5pm Friday.

Copy for sports results and weekend events is Sunday 6pm (4pm for hard-copy articles/results left at IGA) unless by prior arrangement.

Copy should be emailed to news@winchelseastar.org.au or left at IGA Supermarket.

The Winchelsea Star reserves the right to edit or not publish any article.

Views expressed are not necessarily those of the Winchelsea Star or its Committee.

500 online subscribers, 250 copies printed for outlets around Winchelsea.

Free subscription to digital version at winchelseastar.org.au

© Winchelsea Star Org. Inc.
All rights reserved.

Winchelsea Star Organisation Inc.
Reg. No. A1479, ABN: 57 207 411 958
winchelseastar.org.au
Po Box 5, Winchelsea, Vic, 3241

Editors:

Carrie Fogan, Yvonne Stevens
Judy Cameron
editor@winchelseastar.org.au

Advertising:

Sasha Gauntlett and Neil McInnes
advertising@winchelseastar.org.au
0408 102 802

Layout/Sub Editors:

Susan Corby, Charles Corby
Stuart Fountain
production@winchelseastar.org.au

Committee

President: Mick O'Mara
president@winchelseastar.org.au

Treasurer: Cathy Cheadle
treasurer@winchelseastar.org.au

Secretary: Tony Phelps
secretary@winchelseastar.org.au

Committee Members:
Linda Carter

Printer: Mud Group
Website: Winch Websites



WINCHELSEA CONCRETING

· Driveways · Sheds · Decorative Concrete · Raft Slabs

Robert Murphy

☎ 0438 235 237

✉ winchelseaconcreting@outlook.com



mels 
MEL'S DANCE CENTRAL

2023 DANCE ENROLMENTS NOW OPEN!

Winchelsea dance
classes commence
1st February 2023

REGISTER NOW

www.melsdancecentral.com.au

Pre-School - Adults
Beginner - Advanced Levels

All About

Mowers & Chainsaws

Repairs to all makes and models of ride on mowers, domestic mowers, pumps, chainsaws, brushcutters and small engines.

Trading Hours: Mon - Fri 8am - 5pm Saturday 8am - 12 noon

5267 2266 Cnr Princes Hwy & Lennox St Winchelsea

www.allaboutmowers.com.au
accounts@allaboutmowers.com.au



Winchelsea Bowls Club

By Kitty 'N Jack

Pennant Results Midweek

Tuesday January 31st Winchelsea Division 1 def Camperdown Golf at home, winning 2 rinks 67/66 shots.

Tuesday February 7th Winchelsea 1 def Colac away winning 1 rink, 67/66 shots. Home and away season completed, ladder position 2nd.

Tuesday January 31st Winchelsea Division 3 were def at home by Cobden winning 1 rink, 66/87 shots.

Tuesday February 7th Winchelsea 3 finished the season with a Bye, ladder position 5th.

PENNANT RESULTS SATURDAY

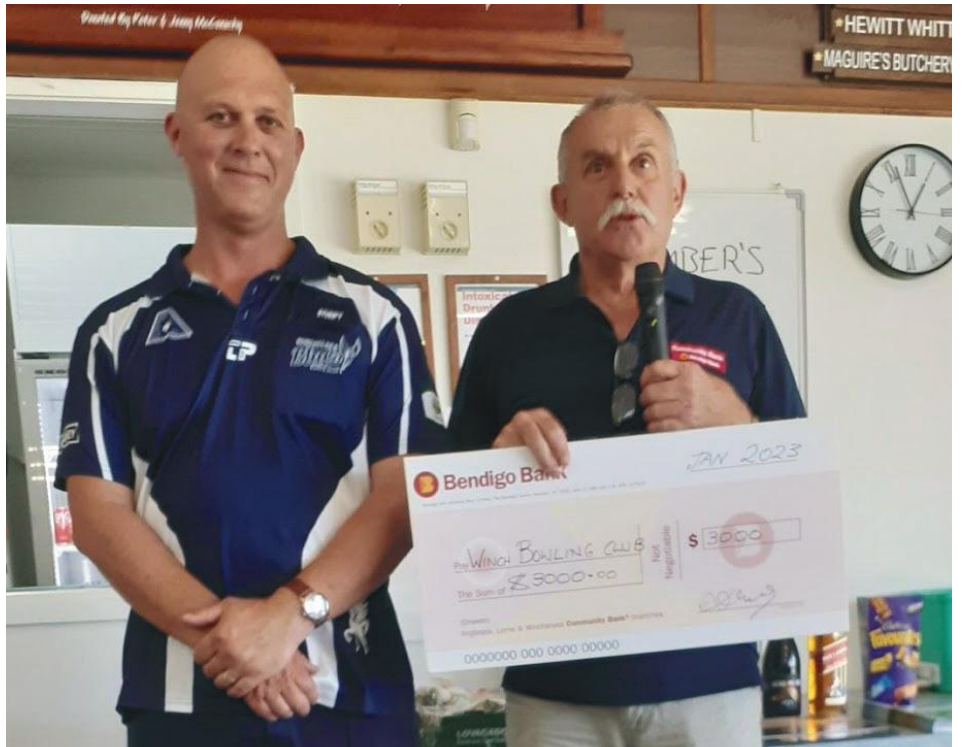
Saturday 4th February Winchelsea Division 1 def Colac City away winning 3 rinks, 101/78 shots.

Saturday 11th February Winchelsea 1 def Camperdown Golf at home winning 3 rinks, 94/78 shots. Ladder position 3rd.

Saturday 4th February Winchelsea Division 3 def Colac City at home winning all rinks, 85/55 shots.

Saturday 11th February Winchelsea 3 def Camperdown Golf away winning all rinks 119/59 shots. Ladder position safe 1st with one round to go.

Saturday 4th February Winchelsea Division 4 def Cobden away winning 1 rink, 46/42 shots.



Robert Cameron of Corangamite Financial Services presenting a cheque to Winchelsea Bowls Club President Andrew Doyle.

Saturday 11th February Winchelsea 4 received a forfeit from Camperdown. Ladder position 8th.

Around the Green

Early in January a very successful Open Men's 4s Tournament was held at Winchelsea this was jointly sponsored by Charles Stewart and Co and the Bendigo Bank. Before dessert was served Robert Cameron was welcomed to speak on behalf of Corangamite

Financial Services and presented us with a cheque of \$3,000.00 sponsorship for Seasons 22/23. The Winchelsea Bowls Club Board of Management and club members are deeply appreciative of the assistance of this organization over many years.

Entering first final week for Midweek 1 and final round for the Saturday Pennant we are playing well, may the bowls continue to be with us all!!

WINCHELSEA LIONS CLUB

PAPER RECYCLING

Paper depot rear of Senior Citizens Rooms
Harding Street
NEWSPAPERS,
MAGAZINES,
PHONE BOOKS WANTED



RAISING FUNDS FOR
OUR TOWN & DISTRICT
5267 2011 or 0408 520 606

GREAT Bundle Deal on Bosch Hot Water... FROM ELGAS
Buy any Bosch Blueooth continuous flow hot water model - 16Litre, 20Litre or 26Litre and Receive \$100* in Elgas bonus LPG gas credits

AND... for new customers, an additional \$80 WORTH OF LPG GAS CREDITS when you open a new LPG Gas account with Elgas**

Ask about the Elgas Easy Payment Plan - 12 months interest free*** on selected LPG appliances

Automatic tanker gas bottle refill OR gas bottle exchange refill is available for home or business....

Call today or visit our website for our many customer benefits and latest offers

131 161
www.elgas.com.au

ELGAS

Scott McDonald
0423 413 829

S.J.R AUTOMOTIVE
ABN 848 483 846 39
13 ALBOP DRIVE, WINCHELSEA VIC 3841

Pixie Wash
Mobile Doggie Care
Dogs up to 20kg
Pixie Heath
0417 586 080

Free Community Service Advertisements

Services and Activities in Winchelsea



TRAIN SERVICES

To Geelong

Mon - Fri

6:41 am, 7:59am, 11:34am,
2:01pm, 7:37pm

Sat and Sun

9:35am, 1:36pm, 7:18pm

To Warrnambool:

Mon - Fri

9:29am, 2:56pm, (to Colac
5:27pm), 6:45pm, 8:53pm

Sat and Sun

8:47am, 2:49pm, 8:37pm

Country Women's Association



7pm Second Wednesday of Month
Winchelsea Senior Citizens' Hall

Bus to the Hub

For reservations on the weekly bus
to the Eastern Reserve Hub,
please phone 52671202.

Surf Coast Mobile Library

Surf Coast Mobile Library
parked in Hesse Street
(outside Shire Hall) on Fridays
between 2:00 and 5:00pm
unless it is a Public Holiday.
Hesse St, Fridays, 2pm-5pm

Winchelsea Taxi

0429 672 888 or 5267 2888

Wheelchair accessible
10 seater bus available.

Winchelsea SES

Meeting and training
2nd Wednesday

Training 4th Wednesday

Visitors and inquiries welcome

0408 102 802

Winchelsea and District Combined Probus Club



Meets 1st Monday of the

month at 10am. Senior
Citizens Rooms, Harding
St, Winchelsea. New
members always
welcome.

Enquiries Linda 0439 817 263.

Body Therapy Classes

Yoga, Pilates, Qi Gung and Mindfulness Meditation Practices

Tuesdays 6.15pm \$13 Cash
Catholic Church Hall -School Term Only

Dr Haidee Benning, 0428 177 964

Winchelsea Playgroup

Every second Thursday 10am-12pm
St Thomas Anglican Church Hall
cnr Barwon Tce and Hopkins St, Winchelsea
Contact: Melissa 0456181268
Facebook - Winchelsea Playgroup 2019

New families welcome

Winchelsea Girl Guides

Our Unit meets at the Catholic Church
Hall, Harding St Winchelsea

each Monday 4.30pm-6pm

All girls 5yrs- 15yrs Welcome!

Contact Yvonne Orchard 0448 672 630

or Bonnie Stokes 0401 386 274

1st Modewarre and Winchelsea Scout Group

Joys: Tuesdays of school term 5-6pm

Cubs: Mondays of school term 6:30-8pm

Scouts: Tuesdays of school term
6:30-8:30pm

All at Modewarre Hall, Cape Otway Rd

Venturers: Wed at Walton's Rd Venturer Den

Contact Marie McPadden 0409 330147

Winchelsea Transfer Station

Opening Hours

Monday	Closed
Tuesday	2pm-4pm
Wednesday	Closed
Thursday	2pm - 4pm
Friday	Closed
Saturday	1.30pm - 3.30pm
Sunday	9.30am - 12.30pm

55 Cressy Road, Winchelsea.

Accepts household garbage,
mixed commercial and industrial waste,
mixed construction and demolition waste.

Accepts recyclable materials.

Accepts one recycle bin two waste bins.

Does NOT accept clean fill.

What's happening in Winchelsea

Op Shop

Current sale

DVD's and CD's half price

Next sale starting 17th Feb

\$5 bag of clothes, \$5 bag of books.

Winch Hospital Auxiliary

Next Auxiliary meeting

6th March, 3pm,

Globe Theatre Supper Room.

Friends of the Barwon AGM

6-8pm Wednesday 22 February 2023

Jeff Sykes Rowing Centre, Geelong

Guest speaker Tracey Slatter, Managing Director Barwon Water, who will talk about the Urban Water Strategy/Water for our Future.

In accordance with our rules of association, we also hereby call for nominations for the positions of President, Vice-President, Secretary, Treasurer.

You may also like to consider joining us as a general committee member...

Please email nominations and/or your intention to attend to friendsofthebarwon@gmail.com

Singing

Winchelsea Community House has supported the beginning of a regular singing group at the Winchelsea Shire Hall.

2023 will see the continuation of weekly singing Wednesday at 4.45pm at the Shire Hall.

The cost is as follows:

10 weeks - \$70

Concession - \$50 (10 weeks)

Children under 16 - free

You can also attend on a weekly basis - \$10 a session.

Email your registration to shirehall@winchhouse.org.au

This is an inclusive group that welcomes anyone who wants to experience the joy of singing with others

Chief Health Officer Update

COVID-19 Weekly Data

There were 2,941 COVID-19 cases reported in Victoria this week, a decrease of 3.3 per cent on the previous week. The average daily number of new cases this week was 420, down from 437 last week.

The seven-day rolling average of patients with COVID in Victorian hospitals is 118. There are currently 114 COVID patients in Victorian hospitals, with 8 patients in intensive care, including 3 cleared cases. In the past three months, 5,701 COVID patients were hospitalised in Victoria.

Of Victorians aged 50 to 64 years, 80.1 per cent have had their third dose and 32.5 per cent have had their

recommended fourth dose. Of those aged over 65, 90.9 per cent have had their third dose and 68.6 per cent have had their fourth dose. 70.6 per cent of people aged 16 and over have had three doses.

A total of 52 COVID-related deaths were reported to the Department in the past week. This represents a 67.4 per cent decrease when compared to the same period the previous month.

The total number of reported COVID-related deaths in Victoria since the pandemic began is 7,232.

New advice for COVID-19 boosters

From February 20, all Victorians who have not had a Covid vaccination or confirmed infection in the past six months will be eligible for a booster. This is irrespective of how many prior doses a person has received.

The national eligibility change follows advice this week from ATAGI.

For those not infected or vaccinated in the past six months, a 2023 booster is recommended for:

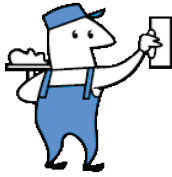
- All adults aged 65 years and over
- Adults 18-64 years who have medical comorbidities or disability with significant or complex health needs
- For those not infected or vaccinated in the past six months, a 2023 booster should be considered for:
- Adults 18-64 with no risk factors for severe Covid
- Children and adolescents aged 5-17 who have medical comorbidities or disability with significant or complex health needs

ATAGI's full advice and recommendations can be found online.

Plasterer & Painter

Daryl Hecker

Domestic & Commercial
Renovations & Repairs
Suspended Ceilings
Dustless Sanding
New Homes
Extensions



Ph 0419 194 799

Antique Repairs

By **Doug Burns** est. 1976

- All Furniture
- French polishing
- Carving
- Veneering
- Wood Turning
- Porcelain



Unusual Requests Welcome

180 Barwon Terrace, Winchelsea

0428 672 704

B & H Modifications Bob Verity

55 Stephenson Road
Winchelsea 3241
Ph: 5267 2467
Mobile: 0411 610 678



Industrial Sewing Machine Work

Caravan Annexes, Trailer Covers,
Shade Sails, Alterations and
Repairs to
Camping and Tents.
Clear PVC Blinds
Repairs to CLEAN Horse Rugs
No Job Too Small
Email: bobverity@southernphone.com.au

Knuckey's Winchelsea Ph: 5267 2011

Knuckey's have in stock a complete range of batteries to suit tractor, heavy machinery, cars, utes

The largest range of the best oil for your vehicles—**CASTROL**—
'when only the best will do'

The largest range of V belts.
A, B, C, D M Sections
Bolts and nuts for all occasions
Steel cut to size

AFS BOOKKEEPING



"Your local bookkeeper"

Bookkeeping
Administration
Payroll
BAS Services
Xero / Myob
Reckon / Quickbooks
Registered BAS Agent

Angelique Snetselaar

0456 077 485

info@afsbookkeeping.com.au
www.afsbookkeeping.com.au



Women's Workshop

Wednesdays 2:00 to 4:30pm.

Learn practical home maintenance skills.

Learn basic woodworking design & construction techniques and hand tool use.

Discuss your ideas/needs with us.

SMS Stuart - 0468 358 282 at the
Winchelsea Men's Shed
email: winchmenshed@gmail.com



mainly music
est. 1990

Fun, Interactive music sessions for pre-school children (0-4 y.o.) and parents/caregivers

When: Mondays from 10 to 11 am
(runs during school terms)

Where: St Thomas' Hall
25 Barwon Tce.

To Enquire ring: 0407838256



2023 is our 80th year!!

New members are welcome –
Actors, directors, back stage, make-up artists, publicity

to present humorous Australian drama
'Cosi' in May this year at COPACC

Read 'Cosi' with us: Wed 8 Feb at 7pm

Auditions: Sunday 12 Feb from 2pm
and Monday 13 Feb from 6pm
Book your spot with Ros ph: 0417 597 186

The Colac Players Shed: 30 Wilson St, Colac

Water Delivery

WAZZA'S
WATER CARTAGE

Stainless Tanker Up to 22,000 ltr loads
Barwon Water Registered

Domestic & Rural Water Supplies

Call Wazza
Mob: 0428 877 260

Email: wazza@wazzas.com.au Web: wazzaswater.com

Kyeema
Rural Fencing Pty. Ltd.
Jason Armstrong & Jay Hawker
1080 Prices Lane, Ombertley, Victoria, 3241
0419 565085 (Jason)
0416 585817 (Jay)
kyeemafam@kyeemafam.com.au
Also incorporating domestic and rural tree trimming services.

VALE Haydn Shiners

Haydn began his life at St Thomas's Anglican Church as a boy at Sunday school. As an adult he served faithfully on the Vestry. His Mother has a beautiful window at the church dedicated to her memory.

Haydn was tireless, willing and enthusiastic at fundraising for many years to support St Thomas's. As an accomplished chef we specially remember Haydn & the Mother's Day breakfasts & the mid-winter feasts & afternoon tea at Wormbete! We all appreciated his enormous contribution to the life of the church.

Haydn always had a cheerful disposition and will be sadly missed by all his church family at St Thomas's.

Our loving sympathy, thoughts and prayers are with his wife Jean and his son Ben and extended family.

Helen Rolls

Summer rains hit the Anglesea River

On the 24th of January a sudden intense rain event saw up to 40mm of rain fall in half an hour across parts of the Anglesea River catchment. This sudden inflow of fresh water naturally opened the estuary mouth to the ocean.

The pH levels in the Anglesea River have remained steady, and any fish living in the estuary would likely have remained.

Vacancy within Colac Otway Shire Council

A countback procedure to fill an extraordinary vacancy within Colac Otway Shire Council will take place at 10 am on Wednesday 1 March, due to the resignation of Councillor Jamie Bell.

The vacancy will be filled by a countback

of all formal votes from the 2020 Colac Otway Shire Council election (instead of voters voting in a by-election). Votes will be redistributed to candidates who were unsuccessful at that general election, and who remain eligible to participate in the countback, to fill the vacancy.

The countback is based on the proportional representation method of

counting. 'The candidate who achieves the quota will be elected. If no participating candidate achieves the quota, following the distribution of votes to participating candidates, the candidate with the highest number of countback votes will be elected,' Election Manager Charmaine Morel said.



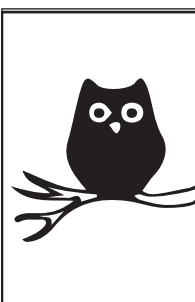
Market News

Our next Market is Sunday March the 5th

We have a great opportunity for community groups to fundraise by running the Devonshire teas in the Shire Hall, we have March available, please contact Leslie winchelseamarket@gmail.com

We're on the lookout for a social media extraordinaire to help us with our social media posts and general marketing tasks, please contact Kim on 0418 56670.

So our market can run smoothly we are looking out for volunteers to help, once a month early Sunday to assist with arriving stallholders and being a general happy helper.



Café La Hoot

have you tried
'owl' coffee?

1 willis st cafelahoot@gmail.com 0407 528 999



Winchelsea Community House and Shire Hall

Hours: Monday – Friday, 9.00am - 2.00pm

Address: 28 Hesse Street, Winchelsea

Phone: 5267 2028

www.winchhouse.org.au

Email: reception@winchhouse.org.au

Term 1 2023

Mini Movers Program

When: Wednesday afternoons 1pm to 1.45pm

Winchelsea Shire Hall Space

Suitable for 3-6 year olds

\$90 for six week program

Dates: 1/3, 8/3,15/3,22/3,29/3 and 5/4

Bookings now open via email to

reception@winchhouse.org.au

Experienced Tai Chi

When: Friday mornings 9.30am-10.30am

Winchelsea Community House Space

\$90 for 9 week term program

Commencing Friday 3rd February, 2023

Bookings now open via email to

reception@winchhouse.org.au

Music Program

When: Thursday mornings 10am to 10.30am

Winchelsea Shire Hall Space

Suitable for 2-4 year olds

\$60 for six week program

Dates: 2/3, 9/3,16/3,23/3,30/3 and 6/4

Bookings now open via email to

reception@winchhouse.org.au

Singing Group

When: Wednesday afternoons

4.45pm-5.45pm

Winchelsea Shire Hall Space

\$70 for 10 week program

Concession \$50 for 10 week program

Under 16 Free

Commencing: Wednesday 1st February, 2023

Bookings now open via email to

reception@winchhouse.org.au

WYLD Youth Group

When: Friday 3rd March and Friday 10th March

6pm to 8.30pm

FREE

Food provided

Meet at the Skate Park

Crochet Group

When: Alternate Saturday afternoons

1.30pm

Winchelsea Community House Space

\$5 per session

Commencing: Saturday 11th February, 2023

JUNIOR NETBALL
CLINIC 2023
 HOSTED BY WINCHELSEA NETBALL CLUB



19 & UNDER
17 & UNDER
15 & UNDER
13 & UNDER
11 & UNDER

ALL WELCOME!
SATURDAY 18TH FEBRUARY 2023
10AM-12:30PM
BBQ LUNCH PROVIDED.

TO REGISTER -
[HTTPS://FORMS.GLE/DDJL2DBU5CGMICNZ6](https://forms.gle/DDJL2DBU5CGMICNZ6)
 ANY QUESTIONS PLEASE EMAIL
WFNC.NETBALL@OUTLOOK.COM OR CONTACT CLAIRE
 0478 839 842

Winchelsea Historical Society

Winchelsea Street Names

Murrell Street



Findon Murrell 1864 owned two stores in Winchelsea.

He was Winchelsea Shire Councillor from 1866-1901.

He married Rosetta Wilks in 1861.

Winchelsea Playgroup

BACK FOR 2023
 ON

Due to Hail Damage to the hall; Playgroup will not be on until 23/2/23

ANGLICAN CHURCH,
 CNR BARWON TCE &
 HOPKINS STREET

\$5 PER FAMILY
 BRING A PIECE OF FRUIT TO
 SHARE



Shire Councillor 1879
 F. Murrell Elected 1866



Matthew Partridge
p 0418 672 334
e mrpsteelworx@yahoo.com.au

Welding Service

- Onsite welding
- Farm maintenance
- Farm machinery & equipment repairs
- Cattle & sheep yards
- Custom built trailers
- Supply & install gates

NO MATTER WHAT YOUR PROBLEM, DODDS ELECTRIX CAN DEFUSE THE SITUATION.

RURAL, INDUSTRIAL, COMMERCIAL. DOMESTIC
PHONE 0438 887 360
EMAIL: DODDSY@FASTMAIL.FM
PO BOX 36 BIRREGURRA, VICTORIA 324
REC: 17520 ABN: 64 581 250 880



5234 6585 0417 385 984
For all your domestic & stock water.
Also available for road and civil construction
Local owned and operated.

OZ TREES NURSERY & TREE PLANTING SERVICES

- Affordable seedlings—over 200 species
- Complete plantation service—farm forestry, shelter, aesthetics
- Deep ripping & mound ploughing. Rotary bed forming
- Our experienced staff will help you select species for your site conditions and needs

Also available—tree planting tools, milk cartons, plastic tree guards & bamboo stakes

569 Warrowie Rd. Colac
P: 5233 6280 F: 5233 6393
E: info@oztrees.com.au
W: www.oztrees.com.au
Open Monday—Friday
9am—4:30pm



Phone OzTrees for professional advice,

TRENCHES & HOLES PTY LTD.



PHILLIP ROBERTSON
☎ 0427 672 945
WINCHELSEA

- General Earth Works
- Driveways
- Trencher
- Kanga Loader
- Grader
- Excavator Work (3.5 & 6.5 Tonne)
- Tip Truck
- Rock Breaker
- Post Holes & Shed Footings

A.B.N 74006896898



WINCH WEBSITES
WEB SOLUTIONS SIMPLIFIED.

WEBSITES

GROW business
INCREASE reach
SAVE time



Find out what a website could do for you
winchwebsites.com.au
04 887766 20

CONCRETER
Alister Aitken

No job to big or small

- Driveways - Carports - Crossovers - Footpaths - Sheds Slabs - Colored Concrete - Concrete sealing - Exposed Aggregate - & more -

Call or text for a no obligation free quote

Servicing our local Winchelsea & Surrounding Areas

alaitken.aa@gmail.com or Alister - 0411 871 950

A.B.N 47 228 574 460



St Vincent de Paul Society
good works

Covering Meredith, Bannockburn, Anakie, Lethbridge, Inverleigh, Teesdale, Shelford, Elaine and Winchelsea

52219170

Monday - Friday 9am to 2 pm
<http://www.vinnies.org.au>

A caring Catholic organisation offering "a hand up" to all people in need.

Not all its quacked up to be ... The truth about duck hunting

As calls for a duck hunting ban in Victoria grow louder and research indicates that two in three Victorians (66%) oppose it, it's timely to bust some of the myths surrounding this controversial activity.

Studies recently completed by Kantar Public and RedBridge Group show Victorians hold concerns for native ducks, that regional and metropolitan views are similar and a ban would have negligible impact on regional economies.

MYTH - A duck hunting ban is only supported by people in metro areas.

FACTS - In research by Kantar Public, of metropolitan residents 68% are opposed to duck hunting, while 60% oppose it in regional Victoria. In a study by RedBridge Group, 29% of respondents who strongly support hunting also strongly support or support a ban on duck hunting, suggesting the broader hunting community agrees the activity is not viable.

MYTH - A duck hunting ban will negatively impact the economy.

FACTS - Estimates show that only 11,549 hunters hunted in 2022, meaning only 0.17% of the Vic population actively participates showing that a ban will have negligible impact on the economy due to the extremely limited participation rate.

MYTH - Ducks do not suffer as a result of hunting.

FACTS - Shotgun use results in many ducks being wounded and suffering before they die. Shotguns fire a cluster of pellets and rely upon hitting vital organs to cause death; however, as there are always open spaces in the pellet cluster, many ducks are hit with shot but are not killed outright. That is, wings and other body tissues and organs may be hit causing injury but not death. Some ducks drown, whilst others may be unable to fly, or feed, thus leaving them exposed to starvation, the elements, or predators. The Game Management Authority has acknowledged the duck wounding rate could be between 6-40%. When using the reported total harvest figure of 262,567 ducks from the 2022 season,

this equates to between 15,700 and 105,000 ducks being wounded and not killed outright in the 2022 season.

MYTH - Best practice hunting and the current rules are well understood.

FACTS - Research commissioned by the GMA in 2020 showed that when asked about dispatching downed ducks, only 13% of respondents answered correctly. When asked about identifying game ducks, only 20% of respondents answered correctly. When asked about minimising wounding, only 37% of respondents answered correctly.

MYTH - People won't holiday in regional Victoria if they can't participate in duck hunting.

FACTS - Research by RedBridge group found duck hunting negatively impacts on people's decisions relating to holiday destinations. 80% of respondents strongly opposed and 65% of those opposed to duck hunting said they would definitely or probably avoid holidaying where duck hunting occurs.

DAVIC AG
CONTRACTING AND EARTHMOVING

For all your harvesting needs
 Mowing, raking, round bailing, paddock prepping, spreading and sowing

Call Dave on **0417 579 973** Bambra

DownRyte Excavations

- Excavations
- Drilling and Piling
- Rock Placement
- Tree and Stump Removal

Sean Hunwick
 Mobile: 0409 447 288
 Email: downryte@activ8.net.au

Simco Plumbing and Gasfitting
 24/7 Emergency service Ph:0400643976

- All General Plumbing and Gasfitting
- Roof and Gutters, Hot Water service changeover
- Split Systems, Air Conditioning and Wood Heaters
- Irrigation, Septic and Treatment plants
- Excavation, Bobcat and Tipper
- Rain water Tank installation
- Renovations and Extensions
- Gas conversions and servicing

Simon McGillivray
 Lic:109610. Free quotes, Fast and friendly service

direct
TEMPORARY FENCING

FOR HIRE - SUPPLIED & ERECTED - 7 DAYS
 GEELONG - BELLARINE - COLAC - SURF COAST
PHONE CAM 0417 310 800

52672192 **R & K Creative Framing**
 for all your framing needs

free quotes
 pension discount
 specialist in Age &
 Disability Modifications

Ray & Kim Jansen
 10 Witcombe st
 Winchelsea 3241

Ray The Home
 Maintenance **HANDYMAN**
 abn 47928623462

0414672192



Winchelsea Community Facebook pages

What's on in Winchelsea

**FLYERS, LOCAL EVENTS,
SMALL BUSINESS,
PROMOTING WINCHELSEA**

facebook.com/WhatsoninWinchelsea

Winchelsea FREE

FREE ONLY

facebook.com/groups/winchelseafree

Winchelsea Community Information AUSTRALIA

POSITIVE DISCUSSION

facebook.com/
groups/207538644446972

Winchelsea Classifieds 3241

FOR SALE ONLY

facebook.com/
groups/216942861684082

Winchelsea Lost and Found

LOST PETS

facebook.com/
groups/768187693217518

Winchelsea Op Shop

facebook.com/
HospitalAuxiliaryOpShopWinchelsea

Winchelsea Tea Rooms

(Community Centre)

facebook.com/WinchelseaTeaRooms

Winchelsea Community House

facebook.com/
winchelseacommunityhouse

Winchelsea Coronavirus Community Support Group

facebook.com/
groups/2676957719207927/

The Green Winchelsea Residents

facebook.com/
groups/515322772623126

Growing Winchelsea Inc

facebook.com/growingwinch

Winchelsea Star

winchelseastar.org.au/step/subscribe/

Winchelsea Movie Club

facebook.com/winchelseamovies

Winchelsea Community Market

facebook.com/
winchelseacommunitymarket

Winchelsea Land and River Care Group

facebook.com/envirowinchelsea/

Upper Barwon Landcare Network

facebook.com/UpperBarwonLandcare

Winchelsea & District Historical Society Inc.

facebook.com/
Winchelseaanddistricthistoricalsociety/

Winchelsea Wildlife Shelter

www.winchelseawildlifeshelter.com/

SCARS - Surf Coast Animal Rescue Service

facebook.com/groups/415211698950674

Winchelsea Gardeners

facebook.com/
groups/779878518703025

Winchelsea & District Historical Society

facebook.com/
Winchelseaanddistricthistoricalsociety/

Winchelsea Repertory Society Inc

facebook.com/winchrep/

Winchelsea Globe Theatre

facebook.com/Winchelsea-Globe-Theatre-164790897641678

Winchelsea Uniting Church

facebook.com/winchelseaunitingchurch

St Thomas' Anglican Church

facebook.com/StThomasWinchelsea

St John the Baptist Catholic Church

facebook.com/pages/Winchelsea-Catholic-Church/101775670163180

Winchelsea Mainly Music

facebook.com/
groups/668500343953191/

Winchelsea Health Club

facebook.com/WinchelseaHealthClub

Winchelsea Playgroup 2019

facebook.com/
groups/551663435367031

Winchelsea Girl Guides

www.guidesvic.org.au/

Winchelsea/Modewarre Scouts

facebook.com/1stModewarreScouts

Winchelsea Fire Brigade

facebook.com/winchelseafirebrigade/

Winchelsea SES

facebook.com/groups/WinchSES

Country Women's Association - CWA Winchelsea Branch

facebook.com/pg/CWAWinchelsea/

Winchelsea Bowls Club

facebook.com/Winchelsea-Bowls-Club-533783333344345/

Winchelsea Blues Cricket Club

facebook.com/groups/8999049476/

Winchelsea Blues FC

facebook.com/WinchelseaFNC/

Mel's Dance Studio

facebook.com/melsdancecentral

Winchelsea Golf Club

facebook.com/winchelseagc/
facebook.com/
groups/1324943804676697

Winchelsea Kyokushin Karate Club

facebook.com/winchelseakyokushin

WYLD Winchelsea Youth Leisure and Drop in

facebook.com/
groups/569737570027065/

Lions Club of Winchelsea

facebook.com/LionsWinchelsea

Winchelsea Probus

10am 1st Mon month at Sen Citz Hall



R.A.K. DAVIS & SONS

CARTAGE CONTRACTORS

WINCHELSEA

SUPPLIER OF ALL QUARRY MATERIALS, TRUCK HIRE

CARTAGE OF GRAIN, LIME, GYPSUM & SUPER

LANDSCAPE & GARDEN SUPPLIES

56 WILLIS ST, WINCHELSEA

Ph – 5267 2094

Ryan – 0438 672 281

Email: rakdavis@bigpond.com



5234 6585 0417 385 984

For all your septic tank, grease traps and interceptor pits servicing. Locally owned and operated

Wightons Lawyers

Dispute Resolution & Litigation

Debt Collection

Property Law

Wills & Estates

Powers of Attorney

Business Law

Family Law

By appointment only

22 Willis Street, Winchelsea

ph. 5221 8777

www.wightons.com.au

Big on products. Big on service.

And big on local banking

Find out more. Call us on 5267 3189 or search Bendigo Bank Winchelsea & District.



BANK LOCAL

Bendigo Bank

Community Bank
Winchelsea & District



Annual General Meeting

Date: Wednesday 22nd February

Time: 6 - 8pm

Venue: Jeff Sykes Rowing Centre
(8 Barwon Terrace, South Geelong)

Friends of the Barwon are pleased to announce that our guest speaker for the evening will be Tracey Slatter, Managing Director, Barwon Water who will talk about the Urban Water Strategy/Water for our Future

A light supper and tea/coffee will be served
For catering purposes, please R S V P :
friends of the barwon @ gmail . com



Winchelsea Supermarket

Trading Hours
Monday to Saturday
8.30am to 7.30pm

Sunday

10am to 7pm

Ph: 5267 2676

29 Main St, Winchelsea

Do you need Residential Aged Care?

50% off respite fees for February.

Estia Health in Bannockburn, Grovedale and Leopold has current vacancies for both respite and permanent care.

To look any of our lovely homes or for any further questions please call Gabrielle on **0419 336 841**.

Bannockburn, Grovedale and Leopold.



St Vincent de Paul Society
good works

Covering Meredith, Bannockburn, Anakie, Lethbridge, Inverleigh, Teesdale, Shelford, Elaine and Winchelsea

52219170

Monday - Friday 9am to 2 pm
<http://www.vinnies.org.au>

A caring Catholic organisation offering "a hand up" to all people in need.



Staircases | Feature Trusses | Tiling
New Homes | Extensions | Renovations

Call Adam on 0412 234 306



@sheoak_constructions
Sheoak Constructions

Winchelsea Men's Shed



For The Community

51 Hesse Street

Every Wednesday from 9:30am

New members always welcome

For more detail contact:
Ray Atkinson (Co-ordinator)
0407 839 139

or
winchmenshed@gmail.com

Need a job done?
Woodworking jobs,
furniture repairs, small jobs.
Drop in and talk to us.



17 Alsop Drive

- ❑ LOG BOOK SERVICE
- ❑ AUTO ELECTRICAL
- ❑ TOWING
- ❑ AIR CONDITIONING
- ❑ CLUTCH & BRAKES
- ❑ TYRES
- ❑ WHEEL ALIGNMENT
- ❑ BATTERIES

CAR, TRUCK REPAIRS & Roadworthys

PH: 5267 3001

Mob: 0417 137 457



Chiropractic - Remedial Massage - Myotherapy - Sound Healing - Breathwork



Chiropractic care for:

Stress & Anxiety	Pain Management
Body Aches & Tension	Family Wellbeing
Poor Sleep	Health Longevity

03 5267 2240 Shop 4/21 Hesse St Winchelsea   <https://onebodychiropractic.com.au/>




Winchelsea Medical Clinic

Located at 36 Main Street, Winchelsea 3241

For any enquires or bookings please contact the clinic on 5292 8028.
Or visit our website: www.winchmc.com.au

Opening Hours:
Monday - Friday 8:00am - 5.00pm
(Monday Evening Clinics available and selected Saturdays)



Our clinic accepts online bookings via the app called HotDoc. Download the app on the App Store or Google Play or head to our website.



Aquafire Healing
TRANSFORMING YOUR HEALTH
THROUGH THE HEALING POWER OF NATURE

NATUROPATHIC MEDICINE • HERBAL MEDICINE
NUTRITIONAL MEDICINE • HOMOEOPATHY
REMEDIAL MASSAGE

www.aquafirehealing.com
Ph: 0415 530 276



NATURAL GAS CONNECTIONS

M. & L DRAYTON PLUMBING SERVICES

YOUR LOCAL LICENSED

- PLUMBERS (24356)
- GAS FITTERS
- GAS CONVERTERS
- CARBON MONOXIDE TESTING

MARK 0428 520 142



Moriac Veterinary Clinic
0447 781 089
PHONE 24 HOURS
784 Hendy Main Road Moriac
info@moriacvet.com
www.moriacvetclinic.com.au
HOURS // Monday - Friday: 8am - 5pm



Lupton BUILDERS
SPECIALISING IN QUALITY




REGISTERED Building Practitioner

• NEW HOMES	• EXTENSIONS	• RENOVATIONS
• ALTERATIONS	• DECKS	• PERGOLAS
• GARPORTS	• VERANDAHS	• RE-GLADS
• BATHROOMS	• WINDOW REPLACEMENTS	

LEIGH LUPTON 0438 840 104 | CHRIS LUPTON 0407 681 514

LEIGHLUPTON17@GMAIL.COM Est. 1977



TANGO
Pet Grooming

RONNIE.
Winchelsea's pet groomer.
For appointments
0436 008 989
tangopetgrooming@gmail.com



Breeze Health and Wellness, Exercise Physiology
32-34 Main Street, Winchelsea (old post office)
 Chronic disease? Injured? Wanting improved athletic performance?
 We can help you manage, rehabilitate and prevent many common ailments through movement.
 Speak with your GP about a referral for a care plan.
 Private health accepted - no referral needed.
 Call Brenton on 0428 790 023 to discuss or email breezehealthandwellness@gmail.com
 Exercise is Medicine, Motion is Lotion. Move with Ease at Breeze.

STS ACCOUNTING GROUP

Your Taxation & Superannuation Specialists.

Winchelsea
5267 2673
www.surftax.com.au

Water Supply Specialists
 WATER SOLUTIONS

74 Dennis Street, Colac
 5231 1861

ALL THINGS WATER:
 - PUMPS - PIPES
 - FITTINGS - TANKS
 - POOL CHEMICALS
 - IRRIGATION
 - WATER PURIFICATION
 - SOLAR - REPAIR

- Domestic and Commercial hire equipment
- Industrial welding gas
- Digging and Earthmoving equipment
- New trailers and trailer repairs
- Firewood
- Stockists of Royal Oil Lubricants products
- LPG for domestic and commercial requirements

Give Chris and the Team a call on **5232 1177** or email info@colachire.com.au
www.colachire.com.au
 101 Wallace St Colac 3250

M & L DRAYTON
PLUMBING SERVICES

REG No 24356 C/A No C02594

- Domestic and Rural Plumbing
- Roofing
- Sewerage & Septic
- LPG & Natural Gas Connections
- Motorised Drain Cleaning
- Backhoe Hire

Phone Mark 5288 7244
PO BOX 98 WINCHELSEA 3241
Mobile 0428 520 142

Winchelsea Taxis is now Surfcoast Taxis

Our fleet of vehicles are growing to all late models and we are covering an extended area including Winchelsea, Colac, Bannockburn, Inverleigh, Great Ocean Road and Geelong.
 We have a fleet of 10 seater Maxi Vans, all with capacity to carry wheelchairs.

Surfcoast Taxis Pty Ltd
All Bookings: 0408 325 992
Fax: 5267 2699
Email: bannotaxis@gmail.com
 (Admin or Stan 0429 672 888)
 66A Batson Street
 Winchelsea 3241

Accounts NDIS provider. TAC, DVA etc
 NDIS provider number 4050001044
 NDIS provider number 4050001048

Book your next ride with **smartHAIL**

Book Track Pay Rate

Download on the App Store GET IT ON Google Play

Commercial | Industrial | Domestic

HAMILTONS
Truck & Bobcat Hire
Give Aaron a Call
0438 438 623

SOUTHERN GRAIN STORAGE PTY. LTD.

AG SUPPLIES FERTILISER GRAIN STORAGE SEED CLEANING

(03) 5267 2351




Volunteers Required

- Bus Driver & Outings Assistant
- Resident Visitor
- Events and Activities Assistant
- Group Wheelchair Walks Assistant
- Appointments Escort
- Social Support Activities
- Gardening - Winchelsea

Volunteers are essential to our aged care system, supporting the wellbeing of older people in their homes and in residential settings



For more information please contact Jessica Culhane, Communications and Community Partnership Officer via phone on [031 5267 1200](tel:03152671200) or via email jculhane@hesse.vic.gov.au

Funeral Planning

Working out what is best for you.
Prepaid Funerals, Funeral Bonds, Pay-by instalments...

There are many options and its important to make the right choice.

Alyson Burchell will be available by appointment to answer any questions about funerals and planning ahead.



For more information or to make an appointment contact Sue on 5221 4788

Tuckers Community Office,
Surf Coast Taxation Services, 22 Willis Street,
Winchelsea

**First Tuesday of the Month,
by appointment 10.00am - 12.00pm**

Caring for families since 1883



5221 4788
www.tuckers.com.au

The home of Winchelsea's future graduates

→ www.journey.edu.au






Winchelsea Towing
24 Hour Accident and Breakdown Towing
0418 535 402



ISSN 2202-6851



HF RICHARDSON

PROPERTY

Servicing all your real estate needs

Ken McDonald **0418 524 150**



Residential | Rural Lifestyle | Agricultural Farms



Charles Stewart & Company are leading livestock and real estate service providers covering Victoria's south west

	LIVESTOCK
Jamie McConachy	0418 522879
Peter McConachy	0408 522878
Matt Nelson	0428 315400
Gerard Bohan	0400 005541
Lachie Barclay	0438 346291
John Thornton	0408 526367
Dougal McIntyre	0439 575612
Ross Spitty	0419 539717



	REAL ESTATE
Michael Stewart	0418 520467
Daryl Osborne	0419 388341
Anthony McDonald	0418 593597
Gerard Bohan	0400 005541
Stephen Lugg	0417 556098
Josh Lamanna	0417 586032



Office
 56 Bromfield Street, Colac
www.charlesstewart.com.au

Green Lead Electrical
 Connecting you to a greener future
REC 23618

0467 097 101



Servicing Geelong & the Surf Coast

Specialising in all residential electrical work including:

- Switch board & lighting upgrades
- Outdoor lighting
- Electrical safety checks
- Energy efficient LED lighting
- Ceiling sweep fans & ventilation
- Energy saving advice

Phone Martin Wilkinson:
0467 097 101

greenlead@outlook.com

132288-CG18-14

MGT BUILDING & CONSTRUCTION

NEW HOMES | EXTENSIONS | RENOVATIONS

Ph: 0409 433 687

