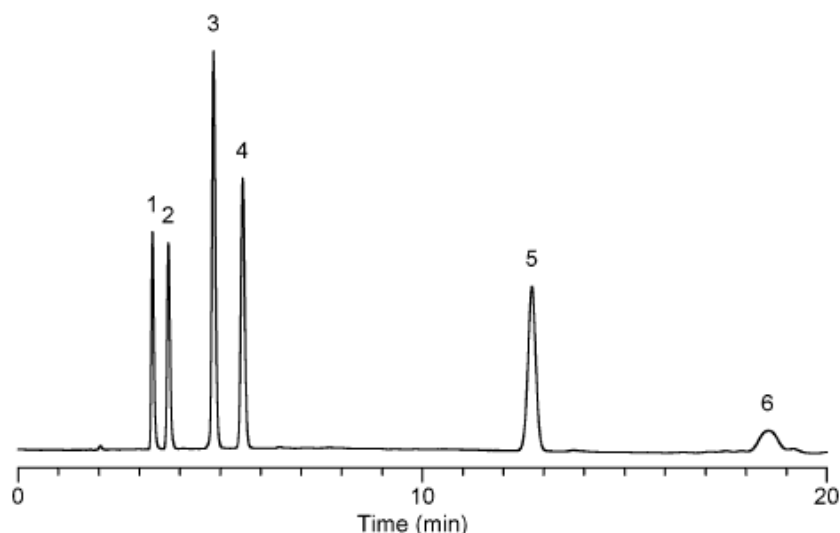


Analysis of Endocrine disruptors

Data No. LA332-0000



No.	Peak Name	R.Time	Area	Efficiency
1	Phenol	3.323	51704	12596.6
2	Bisphenol-A	3.717	57393	11576.2
3	2,4-Dichlorophenol	4.833	122539	15732.7
4	Diethyl phthalate	5.553	93432	16128
5	4-Octylphenol	12.703	118802	19357.1
6	4-Nonylphenol	18.543	34642	9094.95

Column : Inertsil ODS-3V
5µm
250×4.6mmI.D.

Column Cat. No. :

Eluent : Acetonitrile / 20mM Potassium phosphate buffer(pH3.0)
= 70 / 30

Flow rate : 1.0mL/min

Col. Temp. : 40°C

Detection : UV 280 nm

Injection Vol. : 3µL

Sample : Phenol (0.06 mg/mL)
Diethyl phthalate (0.12mg/mL)
Bisphenol-A (0.02 mg/mL)
2,4-Dichlorophenol (0.06 mg/mL)
4-Octylphenol (0.12 mg/mL)
4-Nonylphenol (0.12 mg/mL)

Solutes : 1. Phenol 3.323 51704 12596.6
2. Bisphenol-A 3.717 57393 11576.2
3. 2,4-Dichlorophenol 4.833 122539 15732.7
4. Diethyl phthalate 5.553 93432 16128
5. 4-Octylphenol 12.703 118802 19357.1
6. 4-Nonylphenol 18.543 34642 9094.95