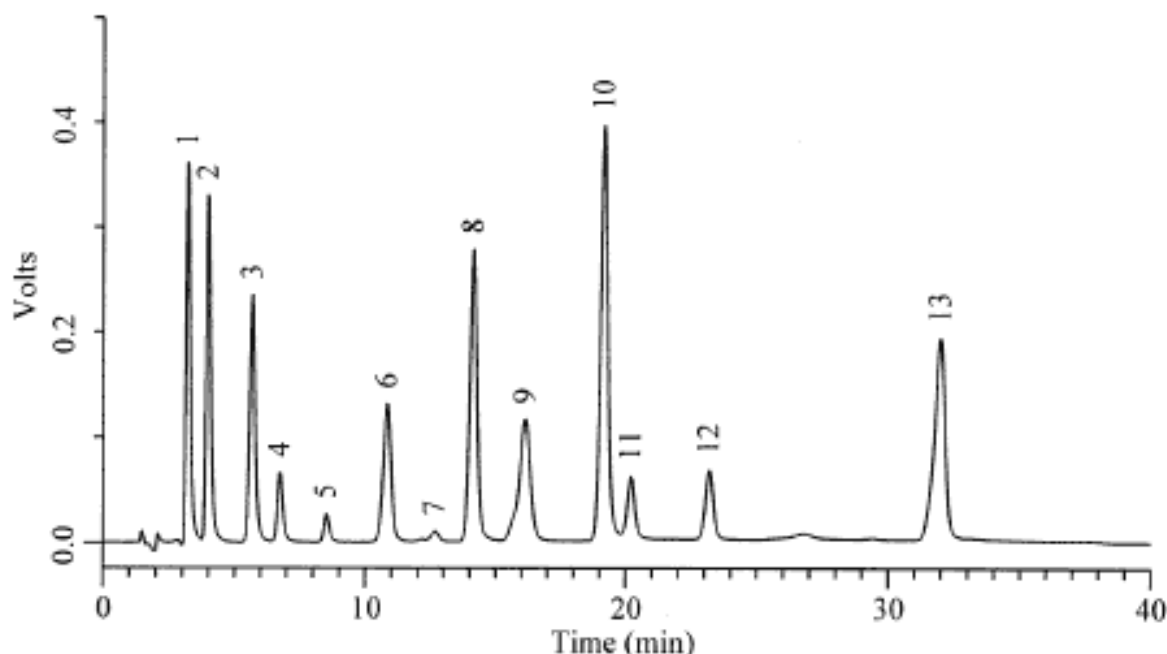


## Analysis of Catecholamines

Data No. LA232-0000



Column	: Inertsil ODS-3 5µm 150 × 1.5mm I.D.	Solutes	: 1. 3,4-Dihydroxymandelic acid(DOMA) 2. 3,4-Dihydroxyphenylglycol(DHPG) 3. Norepinephrine(NE) 4. Vanilmandelic acid(VMA) 5. 3-Methoxy-4-hydroxyphenylglycol (MHPG) 6. 3,4-Dihydroxybenzylamine Hydrobromide(DHBA) 7. Normetanephrine(NM) 8. 3,4-Dihydroxy phenyl acetic acid (DOPAC) 9. Dopamine(DA) 10. 5-Hydroxyindoleacetic acid(5HIAA) 11. Vanillactic acid(VLA) 12. Homovanillic acid(HVA) 13. 5-Hydroxytryptamine(Serotonin)(5HT)(1µg/mL each)
Column Cat. No. :			
Eluent	: PUA;50mM phosphoric acid, 50mM citric acid,100mg/L SOS, 40mg/L EDTA(pH2.3) PUB;20% Methanol 50mM phosphoric acid, 50mM citric acid,100mg/L SOS, 40mg/L EDTA(pH2.3) 0%B-(20min)-100%B-(15min Hold)		
Flow rate	: 0.1 mL/min.		
Col. Temp.	: 30°C		
Detection	: ECD 600mV vs. Ag/AgCl 1000nA/V (Glassy carbon)		
Injection Vol.	: 5µL		
Sample	: 1. 3,4-Dihydroxymandelic acid(DOMA) 2. 3,4-Dihydroxyphenylglycol(DHPG) 3. Norepinephrine(NE) 4. Vanilmandelic acid(VMA) 5. 3-Methoxy-4-hydroxyphenylglycol(MHPG) 6. 3,4-Dihydroxybenzylamine Hydrobromide(DHBA) 7. Normetanephrine(NM) 8. 3,4-Dihydroxyphenylacetic acid(DOPAC) 9. Dopamine(DA) 10. 5-Hydroxyindoleacetic acid(5HIAA) 11. Vanillactic acid(VLA) 12. Homovanillic acid(HVA) 13. 5-Hydroxytryptamine(Serotonin)(5HT)(1µg/mL each)		