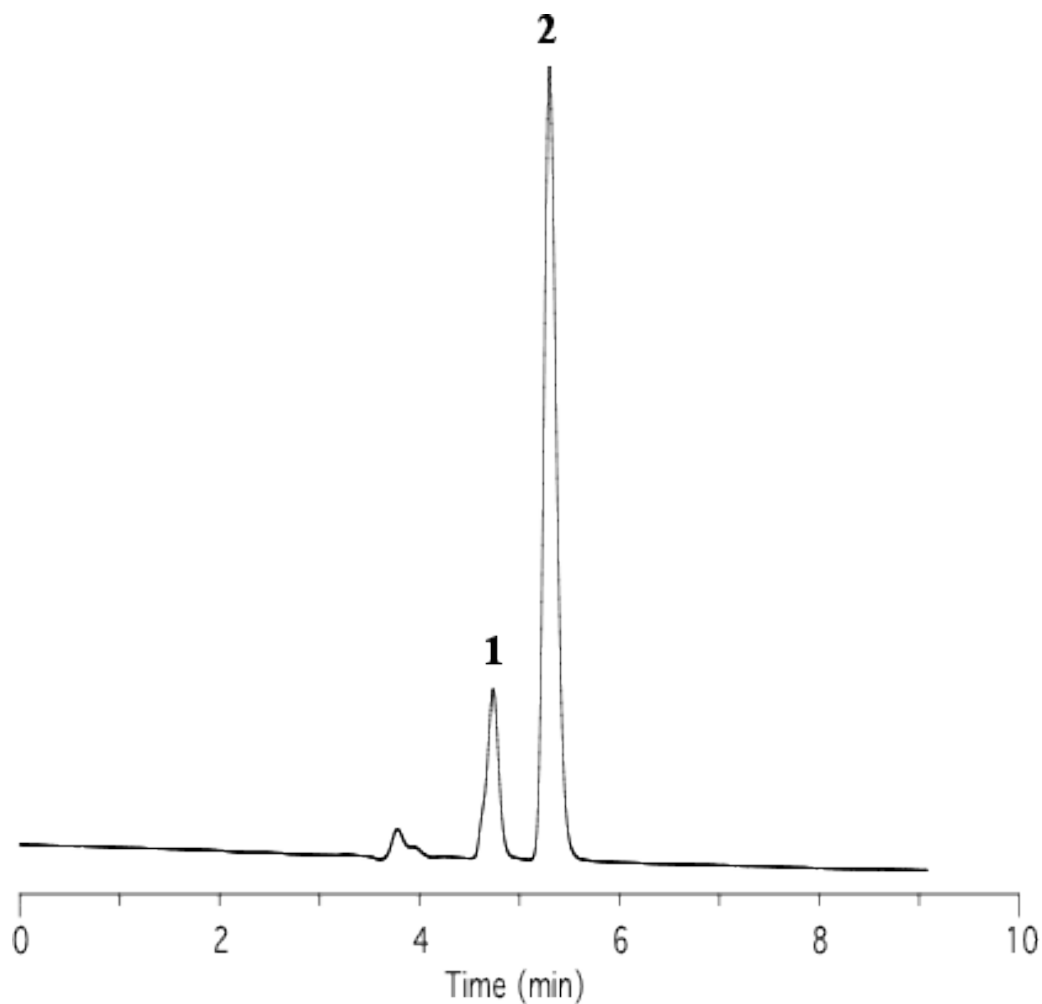


## Analysis of Oxine-Copper

Data No. LA297-0000



Column : Inertsil Diol  
5 µm  
150 x 4.6 mm I.D.

Solutes : 1. Oxine-copper  
2. Caffeine

Column Cat. No. :

Eluent : A) CH<sub>3</sub>CN  
B) 20 mM H<sub>3</sub>PO<sub>4</sub>  
A/B = 10/90, w/w

Flow rate : 1.0 mL/min.

Col. Temp. : 40°C

Detection : UV 254 nm

Injection Vol. :

Sample :