

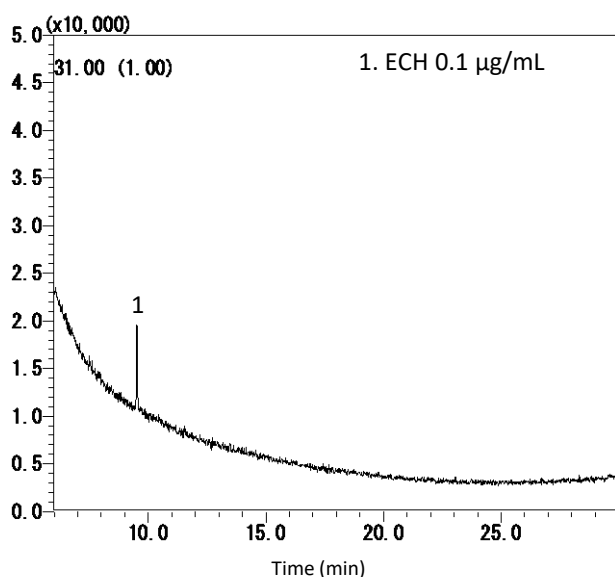
Analysis of Ethylene Chlorohydrin (2-chloroethanol) in Bamboo Setae

Ethylene chlorohydrin (2-chloroethanol, hereinafter abbreviated as ECH) is a reaction product of ethylene oxide, which is widely used for fumigating industrial raw materials and medical equipment.

ECH has been shown to be carcinogenic to humans, and there are safety concerns about residual ECH in skewer and chopsticks.

In this application, bamboo skewer were cut, extracted with ethanol, and measured with GC/MS. No ECH was detected, but some standard additives were measured.

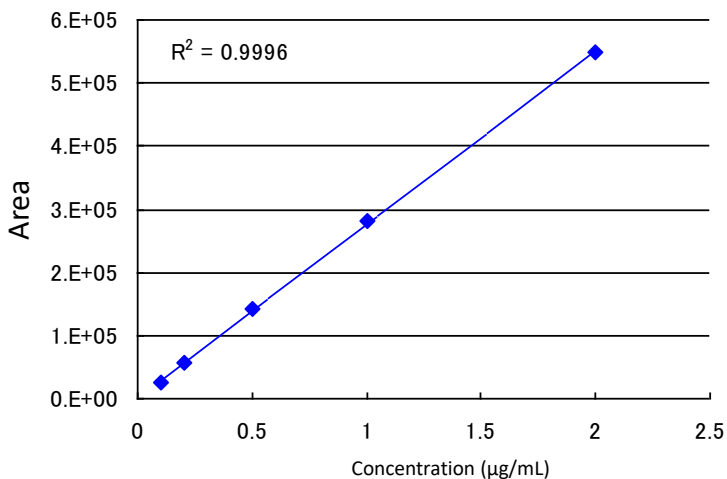
Example: measurement of standard



GC Conditions

System	: GC - MS
Column	: InertCap FFAP 0.25 mm I.D. x 30 m df = 0.25 µm
Col.Temp.	: 60 °C (1 min) - 5 °C/min - 220 °C (7 min)
Carrier Gas	: He 60 kPa
Injection	: Splitless (1 min) Vent flow 35.0 mL/min 200 °C
Detection	: MS Scan (<i>m/z</i> : 30 - 450) Interface Temp. 220 °C
Sample Size	: 0.1 µg/mL in Ethanol 1 µL

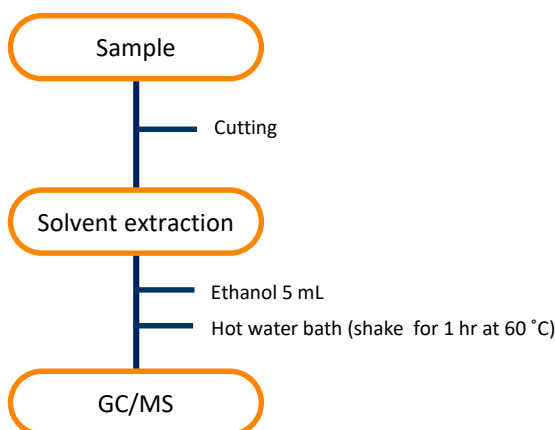
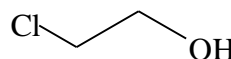
ECH (*m/z* 31) calibration curve



Repeated measurements of 0.1 µg/mL (*m/z* 31)

	Area
1 st	25123
2 nd	23866
3 rd	24918
4 th	24347
5 th	25507
Ave.	24752
STD	649
RSD (%)	2.62

Preliminary processing procedure

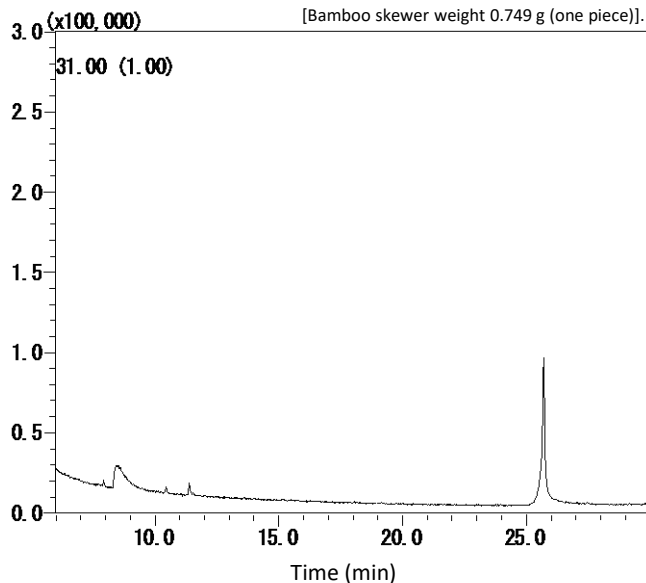

Structural Formula
 Ethylene chlorohydrin (ECH)


Structures created using Chemistry 4-D Draw which is provided by ChemInnovation Software, Inc.

Example: Measurement of samples

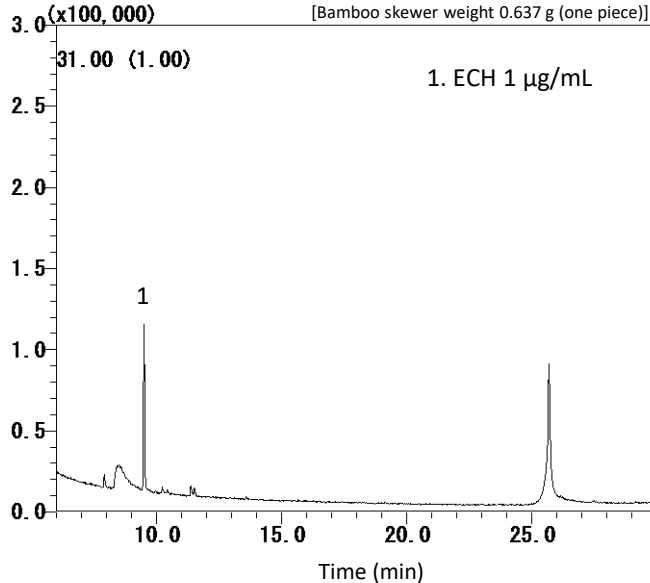
Bamboo skewer extract

[Bamboo skewer weight 0.749 g (one piece)].



Bamboo skewer extract + ECH (1 µg/mL)

[Bamboo skewer weight 0.637 g (one piece)].



GL Sciences disclaims any and all responsibility for any injury or damage which may be caused by this data directly or indirectly. We reserve the right to amend this information or data at any time and without any prior announcement.

GL Sciences, Inc. Japan

22-1 Nishishinjuku 6-Chome
Shinjuku-ku, Tokyo,
163-1130, Japan
Phone: +81-3-5323-6620
Fax: +81-3-5323-6621
Email: world@glsc.co.jp
Web: www.glsciences.com

GL Sciences B.V.

De Sleutel 9
5652 AS Eindhoven
The Netherlands
Phone: +31 (0)40 254 95 31
Email: info@glsciences.eu
Web: www.glsciences.eu

GL Sciences, Inc. USA

4733 Torrance Blvd. Suite 255
Torrance, CA 90503
Phone: 310-265-4424
Fax: 310-265-4425
Email: info@glsciencesinc.com
Web: www.glsciencesinc.com

GL Sciences (ShangHai) Ltd.

Tower B, Room 2003,
Far East International Plaza,
NO,317 Xianxia Road,
Changning District.
Shanghai, China P.C. 200032
Phone: +86 (0)21-6278-2272
Email: contact@glsciences.com.cn
Web: www.glsciences.com.cn

International Distributors

Visit our Website at www.glsciences.com/distributors