

S Q U A R E

play with surfaces



S Q U A R E

p l a y w i t h s u r f a c e s



Le strade e gli edifici delle metropoli hanno ispirato l'estetica di Square, forte e decisa, elegante e minimalista come solo l'architettura contemporanea sa essere. Le geometrie regolari, da comporre attraverso le quattro varianti cromatiche e le tre superfici, rappresentano la cifra stilistica del progetto.

The streets and buildings of the metropolis were the inspiration behind the aesthetics of Square, strong and decisive, elegant and minimalist as only contemporary architecture can be. Four chromatic variations and three surfaces can be combined to create regular geometric arrangements, which represent the project's stylistic code.

Les rues et les édifices des métropoles ont inspiré l'esthétique de Square : forte et décidée, élégante et minimaliste, comme seule l'architecture contemporaine sait l'être. Les géométries régulières, à composer avec les quatre variantes chromatiques et les trois surfaces disponibles, symbolisent la touche stylistique du projet.

Die Optik von Square ist von den Straßen und Gebäuden großer Städte inspiriert. Sie ist ausdrucksstark und markant, elegant und minimalistisch, ganz im Stil der zeitgenössischen Architektur. Die gleichmäßige Geometrie, die durch die Kombination der vier Farbvarianten und drei Oberflächen entsteht, stellt das Stilelement des Projektes dar.

Эстетика больших городов с их современной архитектурой получила свое отражение в коллекции Square – мощной и смелой, элегантной и минималистичной. Идеальная геометрия форм, четыре расцветки и три фактуры – таковы слагаемые стиля этого урбанистического проекта.

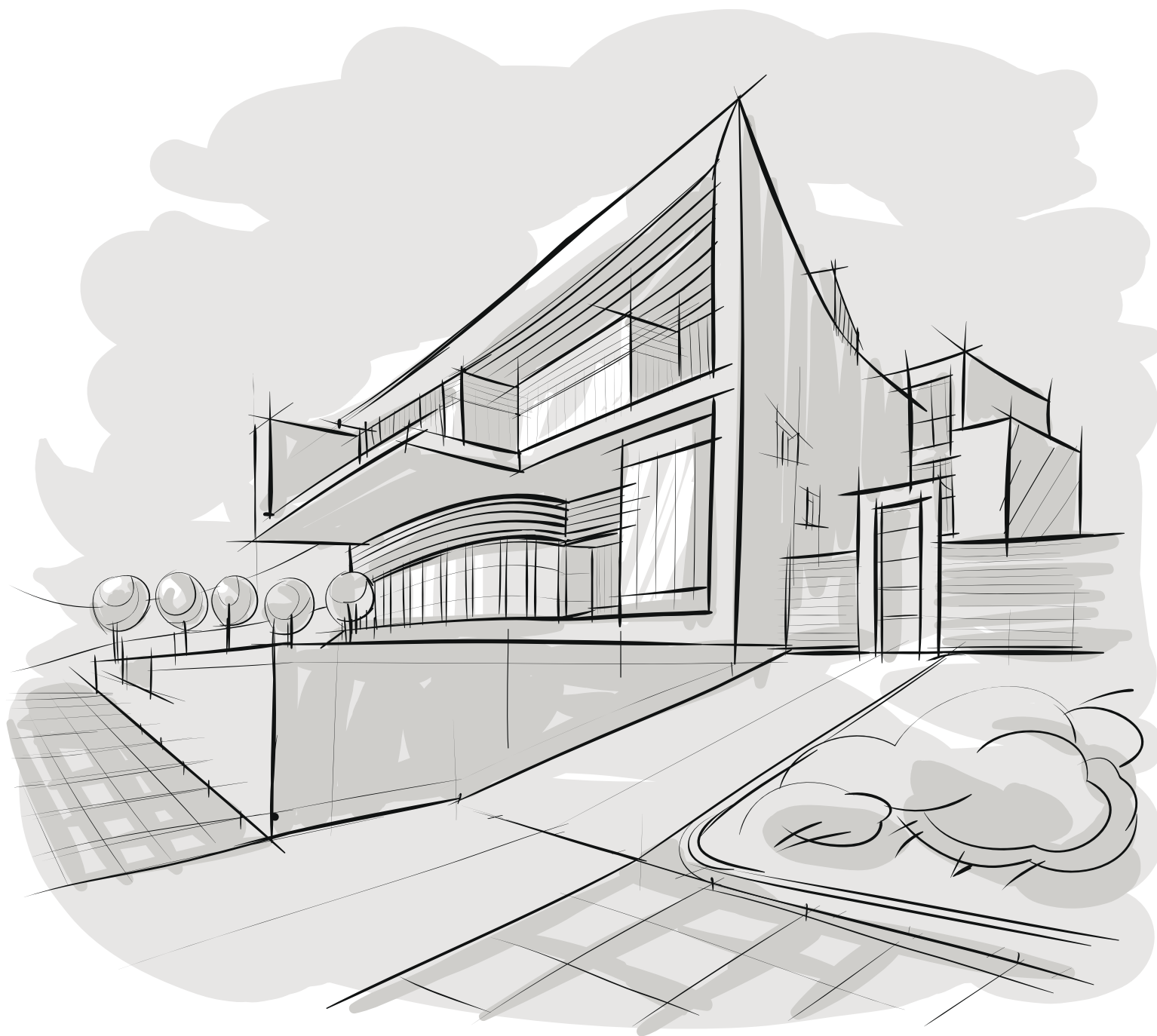
AMBIENTI DOMESTICI PERVASI
DALL'ENERGIA VITALE DELLA
METROPOLI IN CONTINUA
EVOLUZIONE. GEOMETRIE
PERFETTE DEFINISCONO SPAZI
ACCOGLIENTI, VERSATILI, DAL
DESIGN UNICO E PERSONALE.


*Home environments
infused with the
vital energy of an
ever-changing
metropolis.
Perfect geometric
arrangements
make for cosy,
versatile spaces
with a unique and
personal design*

*Des espaces do-
mestiques remplis
de l'énergie vitale
de la métropole en
perpétuelle évolut-
ion. Les géométries
parfaites défin-
issent des espa-
ces accueillants,
versatiles, au design
unique et personnel.*

*Von der vitalen Energie
sich ständig wan-
delnder Metropolen
durchdrungene Wohn-
bereiche. Perfekte
Geometrien schaffen
behagliche, vielseitige
Räume mit einzigarti-
gem, individuellem
Design.*

*Домашний интерьер
наполняется
стремительной
энергией мегаполисов.
Идеальная геометрия
определяет границы
пространства
– уютного,
универсального и
уникального*



The image shows two white, tufted ottomans on a dark grey tiled floor. The ottoman in the foreground is positioned on the left, showing its side profile with a tufted top and a chrome metal frame. The second ottoman is partially visible in the upper right corner, showing its top and a circular chrome base. The floor consists of large, dark grey square tiles with thin dark grout lines.

BLACK in
100x100 . 40"x40" RETT

WHITE home
60x120 . 24"x48" RETT
SQUARE Mix 60x60 . 24"x24" RETT

BLACK in
100x100 . 40"x40" RETT





BLACK home
60x120 . 24"x48" RETT





WHITE home
SQUARE Mix 60x60 . 24"x24" RETT

GREY home
60x120 . 24"x48" RETT

BLACK in
120x120 . 48"x48" RETT

BLACK home
SQUARE Mix 60x60 . 24"x24" RETT





BLACK in
120x120 . 48"x48" RETT

BLACK home
SQUARE Mix 60x60 . 24"x24" RETT



GREY home
60x120 . 24"x48" RETT
SQUARE Mix 60x60 . 24"x24" RETT





GREY home
60x120 . 24"x48" RETT



WHITE home
Mosaico Square 30x30 . 12"x12" RETT

WHITE home
Mosaico Square 30x30 . 12"x12" RETT

BLACK home
60x120 . 24"x48" RETT



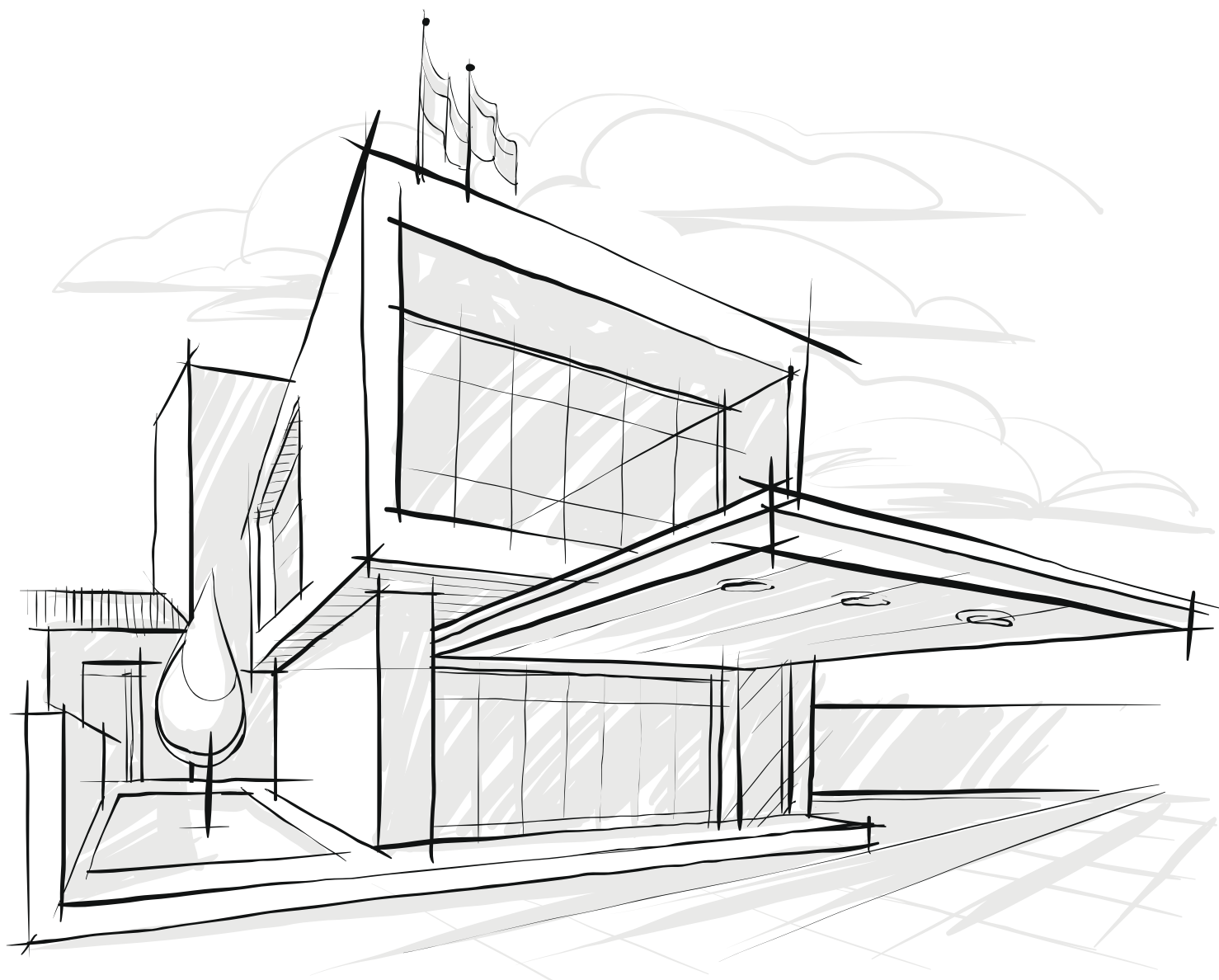
UN LUOGO DEDICATO AL PUBBLICO SI VESTE DI MATERIA ELEGANTE, CONCRETA, ESSENZIALE, CAPACE DI SUGGERIRE UNO STILE E DI DIVENTARE TRATTO DISTINTIVO NELLA SCENOGRAFIA URBANA.

An elegant, concrete, essential material clothes public spaces, evoking a style and becoming a distinctive feature in the urban landscape

Un lieu consacré au public s'habille de manière élégante, concrète, essentielle. Il est capable de suggérer un style et de devenir un signe distinctif dans la scénographie urbaine.

Ein für die Öffentlichkeit bestimmter Ort strahlt dank seines Materials Eleganz, Gediegenheit und Essenz aus, evoziert einen Stil und wird zum Unterscheidungsmerkmal im Stadtbild.

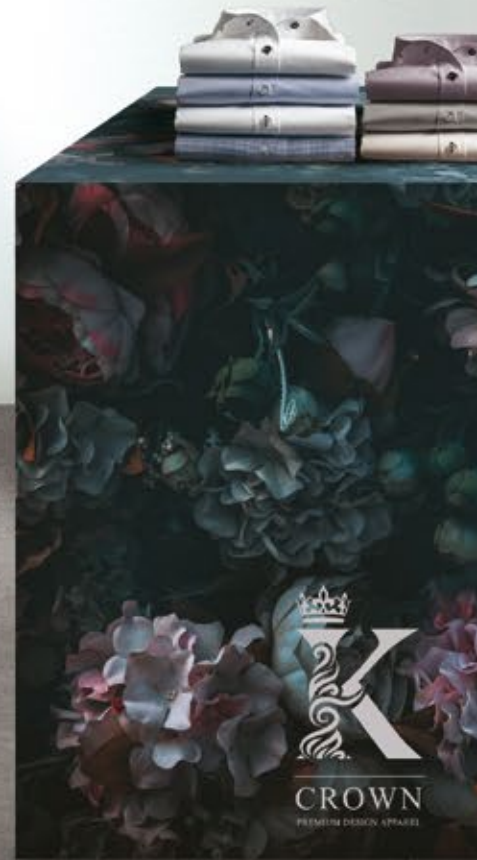
Общественное пространство преобразуется благодаря элегантной материю – лаконичной, строгой, стильной, – выделяясь на фоне городских декораций



GREY in
120x120 . 48"x48" RETT



GREY in
120x120 . 48"x48" RETT
Mosaico CUBE 3D 30x30 . 12"x12" RETT





GREY in
120x120 . 48"x48" RETT
Mosaico CUBE 3D 30x30 . 12"x12" RETT



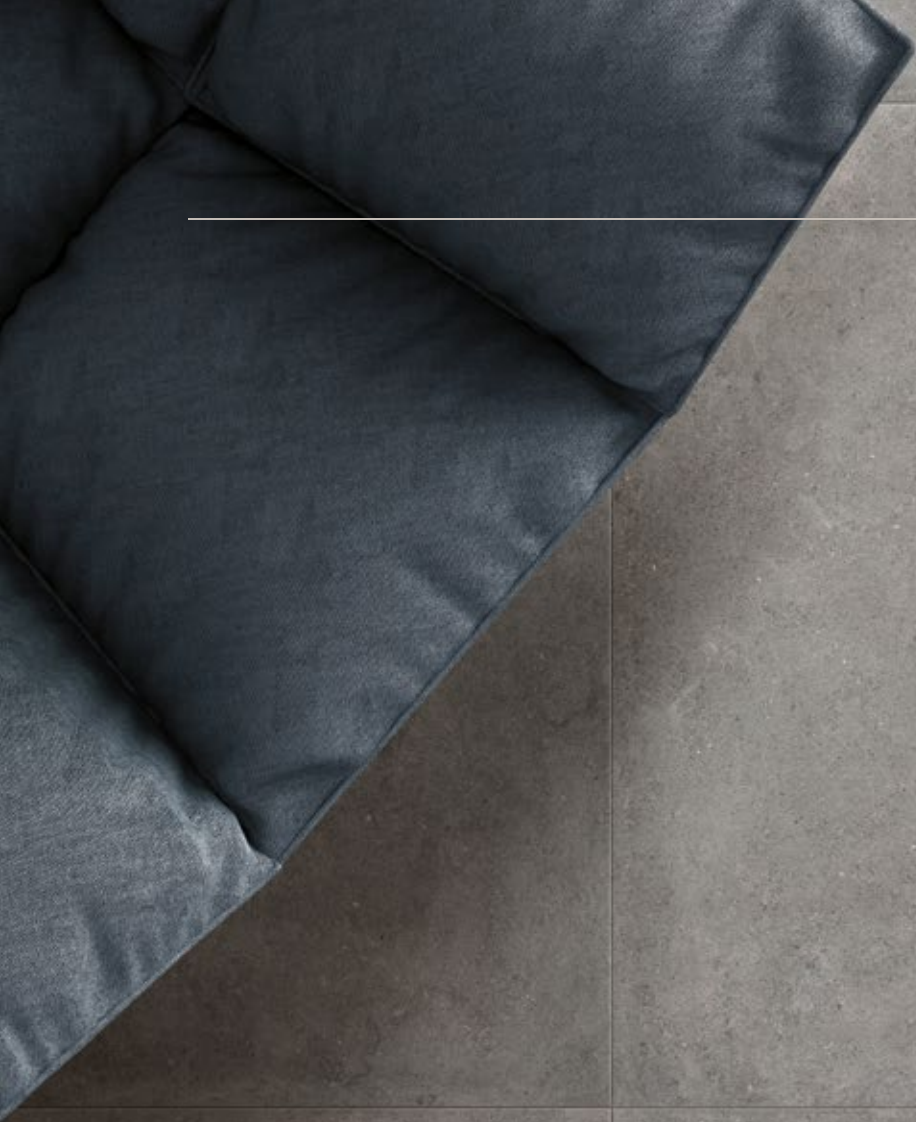


GREY in
Mosaico CUBE 3D 30x30 . 12"x12" RETT



GREY in
Mosaico CUBE 3D 30x30 . 12"x12" RETT

GREY in
120x120 . 48"x48" RETT



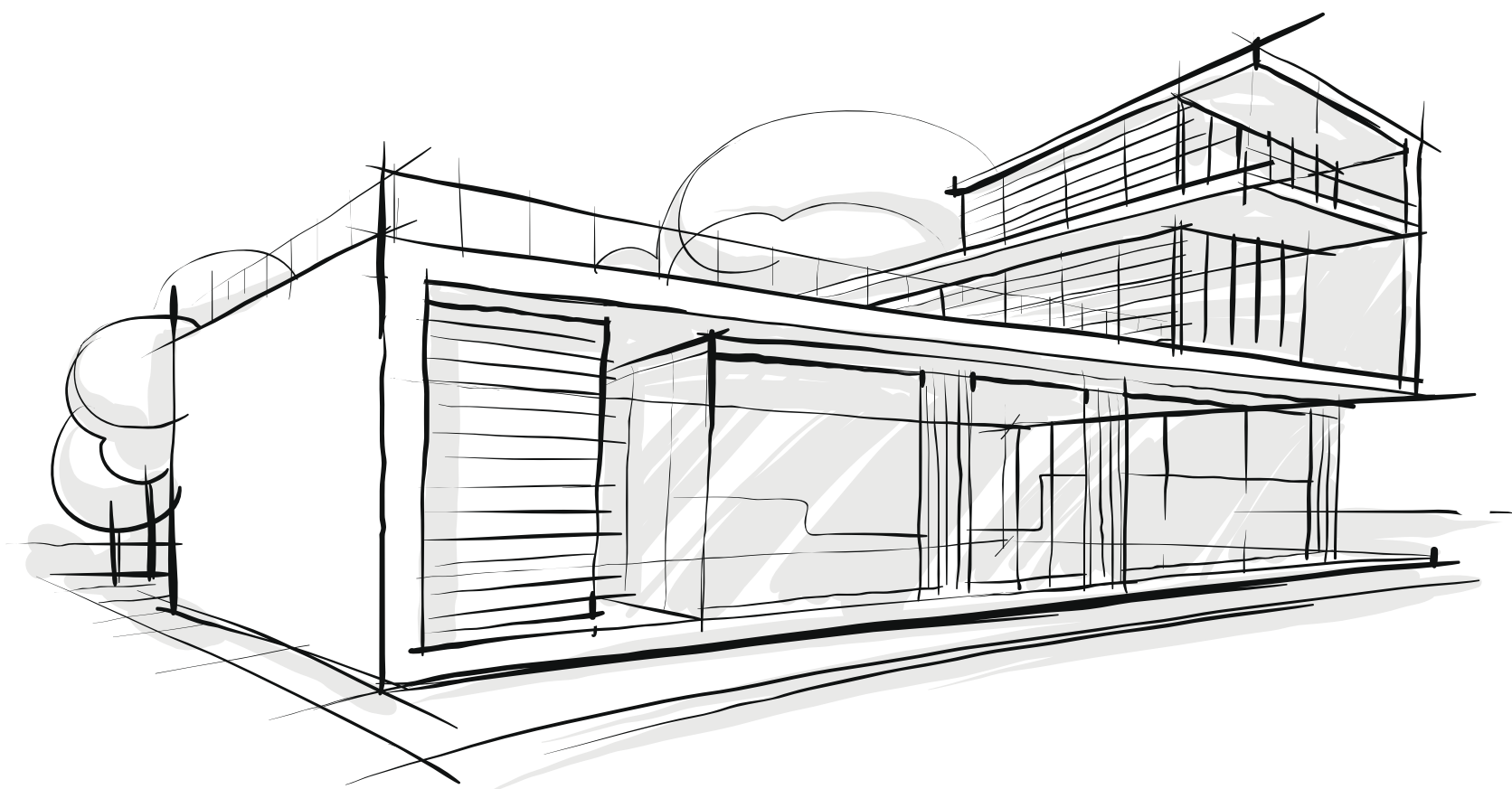
LUCE E COLORE, VOLUMI
ARCHITETTONICI FUNZIONALI
ED ELEGANTI DESCRIVONO IL
CARATTERE DI UNO SPAZIO
ABITATIVO SOSTENIBILE,
APERTO ALLA NATURA
CIRCOSTANTE.

*Light and colour,
practical and
elegant architectural
volumes portray
the character of a
sustainable living
space, open to the
surrounding nature*

*La lumière et la
couleur, les volu-
mes architecturaux
fonctionnels et
élégants décrivent
le caractère d'un
espace d'habitation
durable, ouvert à la
nature qui l'entoure.*

*Licht und Farbe
sowie funktionale
und elegante
Raumaufteilungen
beschreiben den
Charakter eines
nachhaltigen
Wohnraums, der sich
der umliegenden
Natur öffnet.*

*Свет и цвет:
функциональное и
элегантное объемное
пространство
придает домашнему
интерьеру
натуральную
эстетику, звучащую в
унисон с окружающей
природой*



WHITE rock STRUTTURATO
80x80 . 32"x32" R11 19 mm RETT
Pezzi Speciali R11 19 mm



ROPE home
80x80 . 32"x32" RETT





ROPE home
80x80 . 32"x32" RETT





WHITE rock STRUTTURATO
100x100 . 40"x40" R11 RETT

ROPE home
80x80 . 32"x32" RETT
Mosaico Square 30x30 . 12"x12" RETT





ROPE home
80x80 . 32"x32" RETT
Mosaico Square 30x30 . 12"x12" RETT

ROPE in
80x80 . 32"x32" RETT
Mosaico tessera 5x5 RETT





ROPE in
30x60 . 12"x24" RETT
Mosaico tessera 5x5 RETT

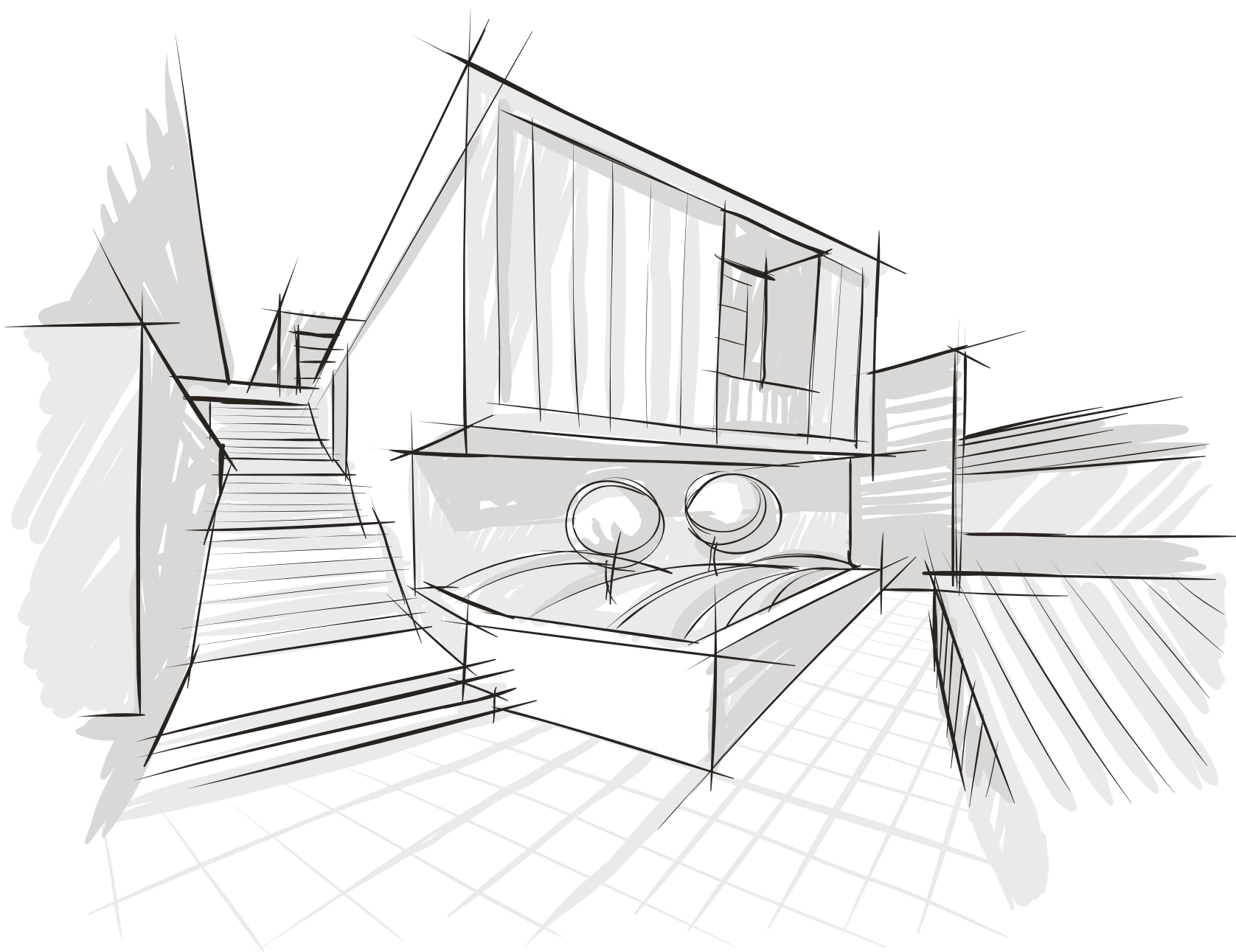
UN LOCALE CHE EMANA
ENERGIA POSITIVA, UN
EQUILIBRIO CROMATICO
CHE ISPIRA SERENITÀ, PER
CONDIVIDERE EMOZIONI E
SENSAZIONI, LASCIANDO LA
ROUTINE QUOTIDIANA FUORI
DALLA PORTA .

*A space that
gives off positive
energy, a chromatic
balance that
imparts serenity, a
sharing of emotions
and sensations,
leaving daily
drudgery at the
door*

*Une pièce qui
émane une énergie
positive, un équilibre
chromatique qui
inspire la sérénité,
pour partager des
émotions et des
sensations, en
laissant la routine
quotidienne hors
d'atteinte.*

*Ein Raum, der
positive Energie
ausstrahlt, eine
farbliche Harmonie,
die Unbeschwertheit
vermittelt, um
Emotionen und
Gefühle zu teilen
und den Alltag
auszusperren.*

*Равновесие цвета,
источник спокойной
и положительной
энергии, призывает
прислушаться к
своим ощущениям,
поделиться
своими эмоциями
и расслабиться,
оставив весь внешний
мир за дверью*

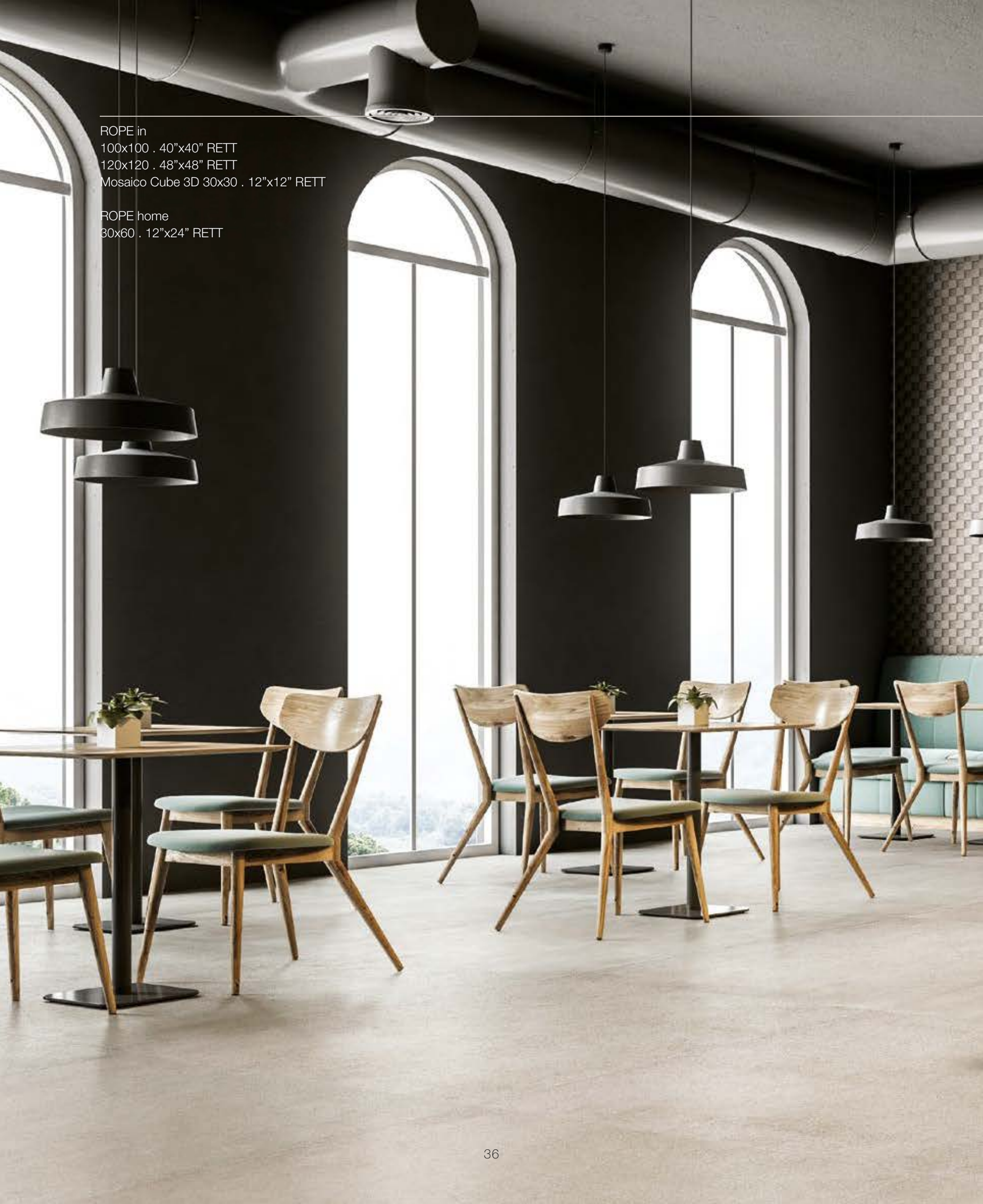


ROPE in
100x100 . 40"x40" RETT
Mosaico CUBE 3D 30x30 . 12"x12" RETT



ROPE in
100x100 . 40"x40" RETT
120x120 . 48"x48" RETT
Mosaico Cube 3D 30x30 . 12"x12" RETT

ROPE home
30x60 . 12"x24" RETT







ROPE in
100x100 . 40"x40" RETT



ROPE in
100x100 . 40"x40" RETT
Battiscopa 6,5x100 . 2⁹/₁₆"x40" RETT

ROPE rock STRUTTURATO
80x80 . 32"x32" R11 19 mm RETT

MARCH 17TH • 2017
OPEN AT 6PM | ENTRY \$5
HAPPY HOUR 6-7PM
FREE FOR GIRLS 9PM
BEER SPECIAL
2092 LEXINGTON AVE, NEW YORK





ROPE rock STRUTTURATO
100x100 . 40"x40" R11 RETT

ROPE rock STRUTTURATO
100x100 . 40"x40" R11 RETT





BLACK

GRES PORCELLANATO A TUTTA MASSA - ISO 13006 Bla UGL
 FULL BODY PORCELAIN STONEWARE - ISO 13006 Bla UGL



120x120 . 48"x48" 100x100 . 40"x40" 80x80 . 32"x32" 60x120 . 24"x48" 60x60 . 24"x24" 30x60 . 12"x24"



BLACK In
 120x120 . 48"x48" R10 RETT

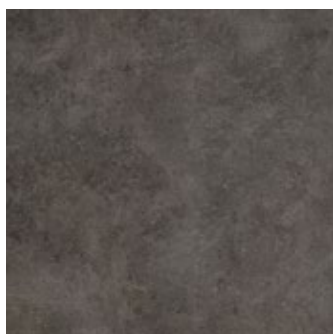


BLACK Home
 60x120 . 24"x48" R9 RETT
 BLACK In
 60x120 . 24"x48" R10 RETT



BLACK Rock
 60x120 . 24"x48" R11
 STRUTTURATO RETT

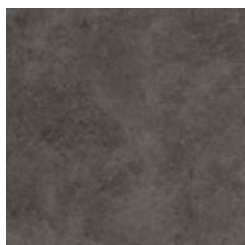
10 mm - 3/8"
 spessore
 thickness
 épaisseur
 stärke
 толщина



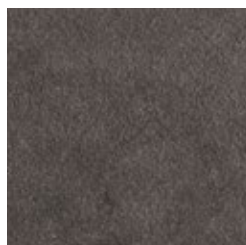
BLACK Home 80x80 . 32"x32" R9 RETT
 BLACK In 80x80 . 32"x32" R10 RETT



BLACK Rock
 80x80 . 32"x32" R11 STRUTTURATO RETT



BLACK Home 60x60 . 24"x24" R9 RETT
 BLACK In 60x60 . 24"x24" R10 RETT



BLACK Rock
 60x60 . 24"x24" R11 STRUTTURATO RETT



BLACK Home 30x60 . 12"x24" R9 RETT
 BLACK In 30x60 . 12"x24" R10 RETT




BLACK Rock
 30x60 . 12"x24" R11 STRUTTURATO RETT



BLACK Home 100x100 . 40"x40" R9 RETT
BLACK In 100x100 . 40"x40" R10 RETT




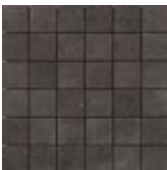
BLACK Rock
100x100 . 40"x40" R11 STRUTTURATO RETT

 **8,5 mm** - ⁵/₁₆"
spessore
thickness
épaisseur
stärke
толщина



BLACK Rock
80x80 . 32"x32" R11 STRUTTURATO RETT

 **19 mm** - ¹³/₁₆"
spessore
thickness
épaisseur
stärke
толщина



MOSAICO TESSERA
BLACK In 30x30 . 12"x12" RETT



MOSAICO SQUARE
BLACK Home 30x30 . 12"x12" RETT



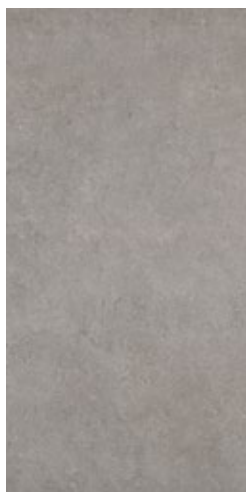
MOSAICO CUBE 3D
BLACK In 30x30 . 12"x12" RETT



120x120 . 48"x48" 100x100 . 40"x40" 80x80 . 32"x32" 60x120 . 24"x48" 60x60 . 24"x24" 30x60 . 12"x24"



GREY In
 120x120 . 48"x48" R10 RETT



GREY Home
 60x120 . 24"x48" R9 RETT
 GREY In
 60x120 . 24"x48" R10 RETT



GREY Rock
 60x120 . 24"x48" R11
 STRUTTURATO RETT

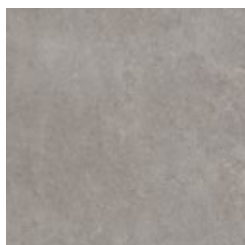
10 mm - 3/8"
spessore
thickness
épaisseur
stärke
толщина



GREY Home 80x80 . 32"x32" R9 RETT
 GREY In 80x80 . 32"x32" R10 RETT



GREY Rock
 80x80 . 32"x32" R11 STRUTTURATO RETT



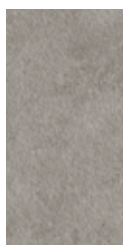
GREY Home 60x60 . 24"x24" R9 RETT
 GREY In 60x60 . 24"x24" R10 RETT



GREY Rock
 60x60 . 24"x24" R11 STRUTTURATO RETT



GREY Home 30x60 . 12"x24" R9 RETT
 GREY In 30x60 . 12"x24" R10 RETT




GREY Rock
 30x60 . 12"x24" R11 STRUTTURATO RETT



GREY Home 100x100 . 40"x40" R9 RETT
GREY In 100x100 . 40"x40" R10 RETT




GREY Rock
100x100 . 40"x40" R11 STRUTTURATO RETT

 **8,5 mm** - ⁵/₁₆"
spessore
thickness
épaisseur
stärke
толщина



GREY Rock
80x80 . 32"x32" R11 STRUTTURATO RETT

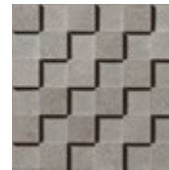
 **19 mm** - ¹³/₁₆"
spessore
thickness
épaisseur
stärke
толщина



MOSAICO TESSERA
GREY In 30x30 . 12"x12" RETT



MOSAICO SQUARE
GREY Home 30x30 . 12"x12" RETT



MOSAICO CUBE 3D
GREY In 30x30 . 12"x12" RETT

WHITE

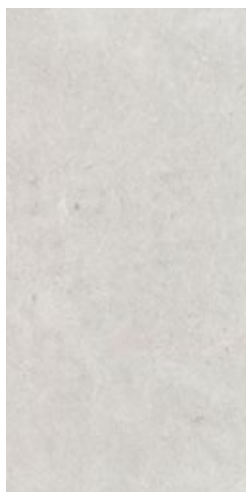
GRES PORCELLANATO A TUTTA MASSA - ISO 13006 Bla UGL
 FULL BODY PORCELAIN STONEWARE - ISO 13006 Bla UGL



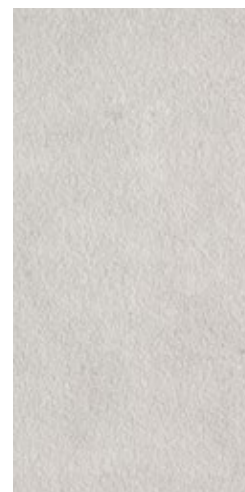
120x120 . 48"x48" 100x100 . 40"x40" 80x80 . 32"x32" 60x120 . 24"x48" 60x60 . 24"x24" 30x60 . 12"x24"



WHITE In
 120x120 . 48"x48" R10 RETT



WHITE Home
 60x120 . 24"x48" R9 RETT
 WHITE In
 60x120 . 24"x48" R10 RETT



WHITE Rock
 60x120 . 24"x48" R11
 STRUTTURATO RETT

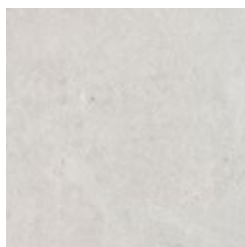
10 mm - 3/8"
 spessore
 thickness
 épaisseur
 stärke
 толщина



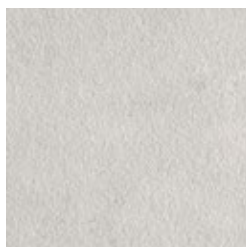
WHITE Home 80x80 . 32"x32" R9 RETT
 WHITE In 80x80 . 32"x32" R10 RETT



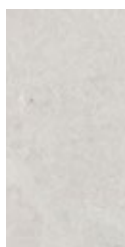
WHITE Rock
 80x80 . 32"x32" R11 STRUTTURATO RETT



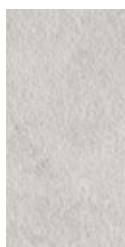
WHITE Home 60x60 . 24"x24" R9 RETT
 WHITE In 60x60 . 24"x24" R10 RETT



WHITE Rock
 60x60 . 24"x24" R11 STRUTTURATO RETT



WHITE Home 30x60 . 12"x24" R9 RETT
 WHITE In 30x60 . 12"x24" R10 RETT




WHITE Rock
 30x60 . 12"x24" R11 STRUTTURATO RETT



WHITE Home 100x100 . 40"x40" R9 RETT
WHITE In 100x100 . 40"x40" R10 RETT




WHITE Rock
100x100 . 40"x40" R11 STRUTTURATO RETT

 **8,5 mm** - ⁵/₁₆"
spessore
thickness
épaisseur
stärke
толщина



WHITE Rock
80x80 . 32"x32" R11 STRUTTURATO RETT

 **19 mm** - ¹³/₁₆"
spessore
thickness
épaisseur
stärke
толщина



MOSAICO TESSERA
WHITE In 30x30 . 12"x12" RETT



MOSAICO SQUARE
WHITE Home 30x30 . 12"x12" RETT



MOSAICO CUBE 3D
WHITE In 30x30 . 12"x12" RETT

ROPE

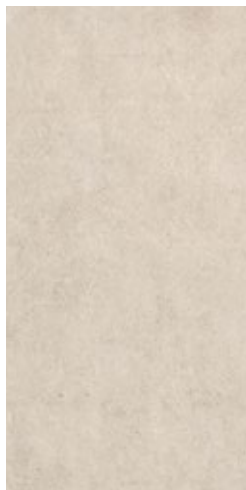
GRES PORCELLANATO A TUTTA MASSA - ISO 13006 Bla UGL
 FULL BODY PORCELAIN STONEWARE - ISO 13006 Bla UGL



120x120 . 48"x48" 100x100 . 40"x40" 80x80 . 32"x32" 60x120 . 24"x48" 60x60 . 24"x24" 30x60 . 12"x24"



ROPE In
 120x120 . 48"x48" R10 RETT



ROPE Home
 60x120 . 24"x48" R9 RETT
 ROPE In
 60x120 . 24"x48" R10 RETT



ROPE Rock
 60x120 . 24"x48" R11
 STRUTTURATO RETT

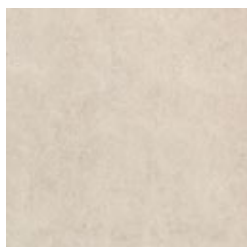
10 mm - 3/8"
spessore
thickness
épaisseur
stärke
толщина



ROPE Home 80x80 . 32"x32" R9 RETT
 ROPE In 80x80 . 32"x32" R10 RETT



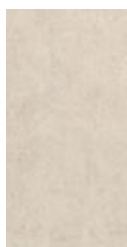
ROPE Rock
 80x80 . 32"x32" R11 STRUTTURATO RETT



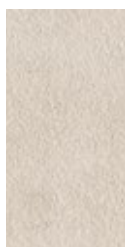
ROPE Home 60x60 . 24"x24" R9 RETT
 ROPE In 60x60 . 24"x24" R10 RETT



ROPE Rock
 60x60 . 24"x24" R11 STRUTTURATO RETT



ROPE Home 30x60 . 12"x24" R9 RETT
 ROPE In 30x60 . 12"x24" R10 RETT




ROPE Rock
 30x60 . 12"x24" R11 STRUTTURATO RETT



ROPE Home 100x100 . 40"x40" R9 RETT
ROPE In 100x100 . 40"x40" R10 RETT




ROPE Rock
100x100 . 40"x40" R11 STRUTTURATO RETT

 **8,5 mm** - 5/16"
spessore
thickness
épaisseur
stärke
толщина



ROPE Rock
80x80 . 32"x32" R11 STRUTTURATO RETT

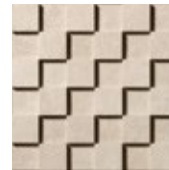
 **19 mm** - 13/16"
spessore
thickness
épaisseur
stärke
толщина



MOSAICO TESSERA
ROPE In 30x30 . 12"x12" RETT



MOSAICO SQUARE
ROPE Home 30x30 . 12"x12" RETT

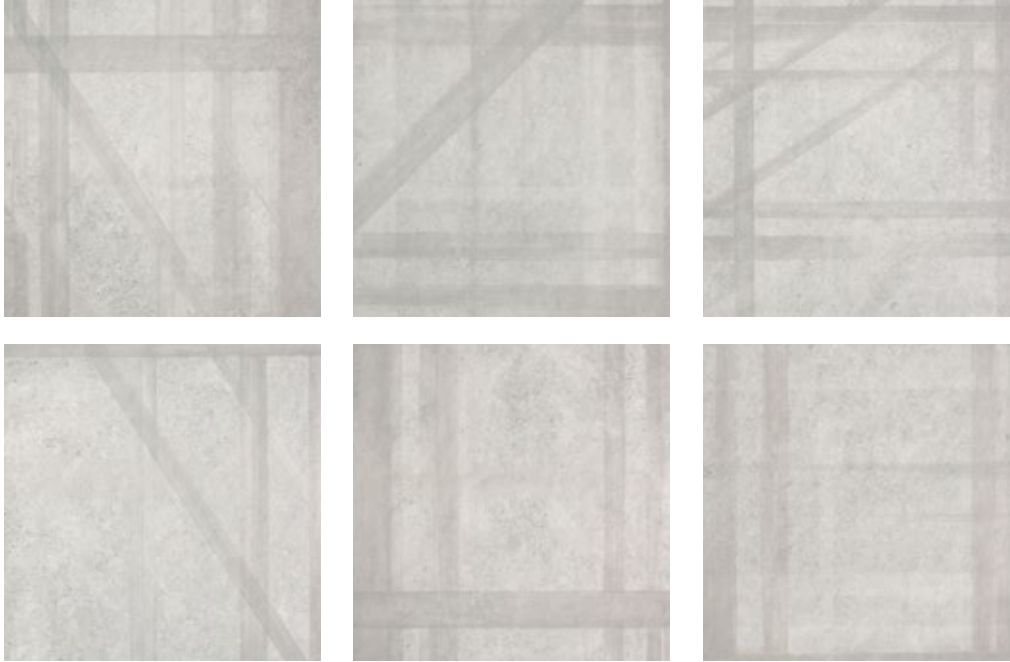



MOSAICO CUBE 3D
ROPE In 30x30 . 12"x12" RETT

S Q U A R E

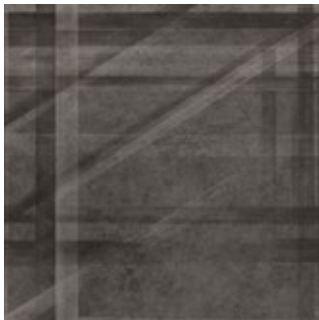


SQUARE Mix



 **10 mm** - 3/8"
spessore
thickness
épaisseur
stärke
толщина

SQUARE MIX HOME
60x60 . 24"x24" RETT



SQUARE Mix
BLACK Home
60x60 . 24"x24" RETT



SQUARE Mix
WHITE Home
60x60 . 24"x24" RETT

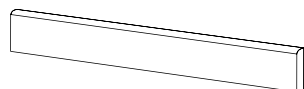


SQUARE Mix
GREY Home
60x60 . 24"x24" RETT



SQUARE Mix
ROPE Home
60x60 . 24"x24" RETT

Pezzi Speciali . Trims. Pièces Spéciales. Formstücke. Специальные изделия



BATTISCOPA in
6,5x100 . 2⁹/₁₆"x40" RETT

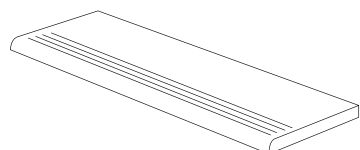


BATTISCOPA in
7,5x80 . 3"x32" RETT



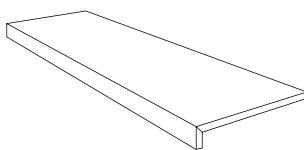
BATTISCOPA in
6,5x60 . 2⁹/₁₆"x24" RETT

 **10 mm - 3/8"**
spessore
thickness
épaisseur
stärke
толщина



STEP MOLATO home
30x60 . 12"x24" RETT


STEP MOLATO in
30x60 . 12"x24" RETT



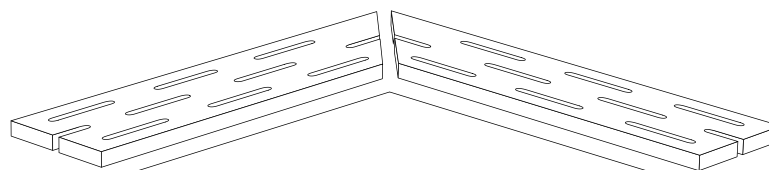
GRADONE COSTA RETTA home
30x60x3,3 . 12"x24"x1⁵/₁₆" RETT

GRADONE COSTA RETTA in
30x60x3,3 . 12"x24"x1⁵/₁₆" RETT

COPPIA ANGOLO GRIGLIA 2 PZ ROCK R11
20x80 . 8"x32" RETT

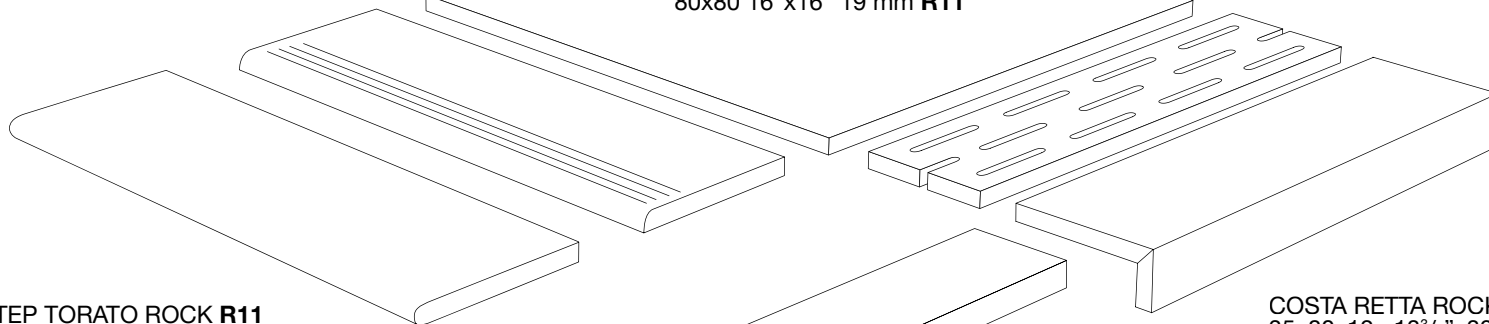
 **19 mm - 13/16"**
spessore
thickness
épaisseur
stärke
толщина

STEP MOLATO ROCK R11
40x80 . 16"x32" RETT



GRIGLIA PER PISCINA ROCK R11
20x80 . 8"x32" RETT

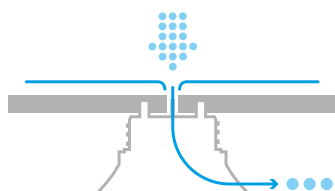
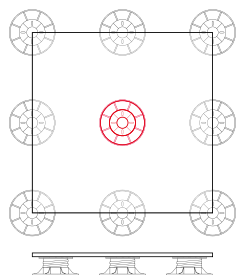
80x80 16"x16" 19 mm R11



STEP TORATO ROCK R11
40x80 . 16"x32" RETT

COSTA RETTA ROCK R11
35x80x12 . 13³/₄"x32"x4³/₄" RETT

ELEMENTO AD "L" ASSEMBLATO ROCK R11
15x80x5 . 6"x32"x2" RETT
















Per una migliore stabilità della pavimentazione a secco sopraelevata, si suggerisce l'impiego di 9 supporti per lastra 80x80.

For more stability of the dry laid raised floor, the use of 9 supports per 80x80 - 32"x32" pavers is advisable. Pour une meilleure stabilité du revêtement de sol surélevé posé à sec, il est recommandé d'utiliser 9 supports par dalle 80x80. Zur Erhöhung der Stabilität von Doppelböden wird empfohlen, pro Platte im Format 80x80 9 Halter einzusetzen. Для наилучшей устойчивости фальшполов рекомендуется использование опор в количестве 9 шт для формата 80x80 под каждую плиту.

GRES PORCELLANATO A TUTTA MASSA - ISO 13006 Bla UGL

FULL BODY PORCELAIN STONEWARE - GRÈS CÉRAME PLAINE MASSE

VOLLMASSEFEINSTEINZEUG - КЕРАМОГРАНИТ ПО ВСЕЙ ТОЛЩИНЕ

 UNI EN ISO 10545-2	Lunghezza e larghezza Length and width Longueur et largeur Länge und Breite Длина и ширина	Deviaz. val. medio % rispetto a dimens. di fabbricazione. Ecart dimensionnel moyen en % par rapport aux dimensions de fabrication. Deviation of the average size for each tile from the work size (%). Abweichung des Durchschnittswertes in % hinsichtlich der Produktionsgröße. Отклонение средн. значения, %, от производственных размеров > 410 cm² +/- 0,6% - ≤ 410 cm² +/- 0,75%	± 0,5% ± 2 mm		
		Deviaz. val. medio % rispetto a dimens. di fabbricazione. Deviation of the average size for each tile from the average size to the 10 test specimens (%). Écart de valeur moyenne unitaire % en rapport à la valeur moyenne de 10 échantillons mesurés. Abweichung des Durchschnittswertes der einzelnen Fliesen in % hinsichtlich des Durchschnitts von 10 getesteten Mustern. Отклонение средн. значения, отдельной плитки относительно средн. значения 10 измеренных образцов +/- 0,5%	± 0,5% ± 2 mm		
UNI EN ISO 10545-2	Rettilineità degli spigoli Straightness of sides Rectitude des arêtes Kantengeradheit Прямолинейность кромок	+/- 0,5%	± 0,3% MAX ± 1,5 mm		
	Spessore / Thickness / Epaisseur / Stärke / Толщина	+/- 5%	± 5% MAX ± 0,5 mm		
	Ortogonalità Rectangularity Orthogonalité Rechtwinkligkeit Ортогональность	+/- 0,5%	± 0,3% ± 1,5 mm		
	Variazioni di tono. Shade variations. Variations de nuance. Tonvariationen. Вариации оттенка	-	 V2 LIEVE VARIAZIONE SLIGHT VARIATION LEISERE VERÄNDERUNG ЛЕГКОЕ ИЗМЕНЕНИЕ		
 UNI EN ISO 10545-3	Assorbimento d'acqua Water absorption Absorption d'eau Wasseraufnahme Водопоглощение	≤ 0,5% GRUPPO Bla UGL ≤ 0,5% GRUPPO Bla GL	E ≤ 0,1%		
 UNI EN ISO 10545-6	Resistenza della superficie (scala MOHS) Scratch hardness (MOHS scale) Dureté de la surface (échelle MOHS) Oberflächenhärte (MOHS skala) Поверхностная прочность по (шкале Мооса)	EN 101	> 6		
 UNI EN ISO 10545-4	Resistenza a flessione e forza di rottura Modulus of rupture and breaking strength résistance à la flexion et force de rupture Biegefestigkeit und Bruchlast Прочность на изгиб Модуль жесткости	S ≥ 1300 N	S ≥ 1300 N		
		R ≥ 35 N/mm²	R ≥ 35 N/mm²		
 UNI EN ISO 10545-6	Resistenza all'abrasione profonda Abrasion resistance Résistance à l'abrasion Verschleiß (Volumenverlust) Сопротивление глубокому истиранию	≤ 175 mm³	≤ 175 mm³		
 UNI EN ISO 10545-8	Coefficiente di dilatazione termica lineare Linear thermal expansion coefficient Dilatation thermique linéaire Lineare Wärmeausdehnung Коэффициент линейного теплового расширения	Come dichiarato dal produttore See manufacturer's declaration Selon déclaration du producteur Entsprechend der Herstellerangaben Как указано изготовителем	Metodo disponibile Method available Méthode disponible Verfügbares Verfahren Определяется производителем		
 UNI EN ISO 10545-9	Resistenza allo shock termico Thermal shock resistance Résistance au choc thermique Temperaturwechselbeständigkeit Стойкость к тепловым перепадам	Nessun campione deve presentare alterazioni No sample must show visible alteration Aucun carreau ne doit présenter d'altération Kein Muster darf sichtbare Veränderungen zeigen Никакой образец не должен показывать изменений	Resistente Resistant Résistant Widerstandsfähig Устойчивый		
 UNI EN ISO 10545-12	Resistenza al gelo Frost resistance Résistance au gel Frostbeständigkeit Морозостойкость	Non devono presentare difetti visibili No sample must show visible defect Aucun carreau ne doit présenter de défaut Muster dürfen keine sichtbaren Schäden zeigen Не должны обнаруживать видимые дефекты	Ingelivo Frost proof Ingelief Frostsicher Морозостойкость		
 UNI EN ISO 10545-13	Resistenza all'attacco chimico (tranne acido fluoridrico) Resistance to chemical attack (except hydrofluoric acid) Résistance à l'attaque chimique (sauf acide fluoridrique) Säure- und Laugenbeständigkeit (außer Flußsäure) Стойкость к бытовым химикатам	Nessun campione deve presentare alterazioni No sample must show visible alteration Aucun carreau ne doit présenter d'altération Muster dürfen keine sichtbaren Veränderungen zeigen Никакой образец не должен показывать изменений	Classe A-HA-LA Class A-HA-LA Classe A-HA-LA Gruppe A-HA-LA Klacc A-HA-LA		
 UNI EN ISO 10545-14	Resistenza alle macchie di piastrelle smaltate Resistance to stains of glazed tiles Résistance aux taches des carreaux émaillés Widerstand gegen Fleckenbildner der glasierten Fliesen Стойкость глазурованной плитки к образованию пятен	Nessun campione deve presentare alterazioni No sample must show visible alteration Aucun carreau ne doit présenter d'altération Muster dürfen keine sichtbaren Veränderungen zeigen Никакой образец не должен показывать изменений	Classe 5 Class 5 Classe 5 Gruppe 5 Klacc 5		
 B.C.R.A. REP/CEC 6/81 DIN 51130 DIN 51097 PENDOLUM AS4586 PENDOLUM BS 7976	Resistenza alla scivolosità. Coefficiente di attrito medio Skid resistance. Average coefficient of friction Résistance au glissement. Coefficient de frottement moyen Rutschfestigkeit. Mittlerer Reibungswert Сопротивление скольжению. Средний коэффициент трения	DIN 51130 (no lapp)	0,40 ≤ M ≤ 0,74		
		B.C.R.A. REP/CEC 6/81 (no lapp)	IN R10	ROCK R11	
		DIN 51097 (no lapp)	R10 Classe B Class B Classe B Gruppe B Klacc B	R11 Classe C Class C Classe C Gruppe C Klacc C	
		DCOF Acu Test (no lapp)	M ≥ 0,42		
		Pendulum Australiano AS 4586	IN R10: Classe P3 Class P3 Classe P3 Gruppe P3 Klacc P3	ROCK R11: Classe P4 Class P4 Classe P4 Gruppe P4 Klacc P4	
		Pendulum Britannico BS 7976	PTV > 36 dry		

imballaggi

Packing
Emballage
Verpackung
Упаковка

						
	PCS/BOX	SQM/BOX	KGS/BOX	BOXES/PALLET	SQM/PALLET	KGS/PALLET
120x120 . 48"x48"	1	1,44	31,68	40	57,60	1.290
100x100 . 40"x40" RETT R9 100x100 . 40"x40" RETT R10 100x100 . 40"x40" RETT R11 STRUTTURATO	1	1,00	20,65	42	42,00	900
80x80 . 32"x32" RETT R9 80x80 . 32"x32" RETT R10 80x80 . 32"x32" RETT R11 STRUTTURATO	2	1,28	28,50	40	51,20	1.160
80x80 . 32"x32" 19 mm	1	0,64	29,00	40	25,60	1.176
60x120 . 24"x48" RETT R9 60x120 . 24"x48" RETT R10 60x120 . 24"x48" RETT R11 STRUTTURATO	2	1,44	31,70	21	30,24	680
60x60 . 24"x24" RETT R9 60x60 . 24"x24" RETT R10 60x60 . 24"x24" RETT R11 STRUTTURATO	3	1,08	23,50	32	34,56	770
30x60 . 12"x24" RETT R9 30x60 . 12"x24" RETT R10 30x60 . 12"x24" RETT R11 STRUTTURATO	6	1,08	23,30	40	43,20	950



Posa consigliata con una sfalsatura tra ciascun listello non superiore al 25% della lunghezza.
When laying, you are recommended not to stagger the strips by more than 25% of the length.
Pose conseillée avec un décalage entre chaque listel non supérieur au 25% de la longueur.
Wir empfehlen eine Verlegung im Viertelverband.
Рекомендуется укладка с разномом элементов друг относительно друга, не превышающим 25% длины элемента



Per i grandi formati è consigliata la posa con l'utilizzo di distanziatori livellanti, tipo Levelling System di Raimondi.
We suggest to lay large sizes with "levelling spacers" like the Raimondi's Levelling System.
Pour les grands formats, nous conseillons croisillons nivelants, type Levelling System de l'usine Raimondi.
Wir empfehlen fuer die Verlegung der grossen Formaten die Benutzung von Autolivellierungssysteme, wie z.B. Raimondi Levelling System.
Для выклейки больших форматов советуем использовать распорную выравнивающую деталь типа Levelling System di Raimondi.

NOTE TECNICHE - TECHNICAL NOTES - NOTES TECHNIQUES - TECHNISCHE ANMRKUNGEN - ТЕХНИЧЕСКИЕ ЗАМЕЧАНИЯ

Tutti i formati sono nominali. Cercom Ceramiche si riserva la facoltà di modificare in qualunque momento le informazioni e le caratteristiche illustrate nel presente catalogo, che non sono comunque da ritenere legalmente vincolanti. I colori e le caratteristiche estetiche dei prodotti sono quanto più possibile vicini a quelli reali, nei limiti consentiti dai processi di stampa.

All sizes are nominal. Cercom Ceramiche reserves the right to modify the information and the characteristics illustrated in this catalogue (which are in any case not legally binding) at any moment. The colours and appearance features of the products are as close as possible to reality, within the limitation of the printing process.

Tous les formats sont nominaux. Cercom Ceramiche se réserve la faculté de modifier à tout moments les informations et les caractéristiques figurant dans le présent catalogue, lesquelles niengagent pas par le fabricant au plan légal. Les couleurs et les caractéristiques esthétiques sont fidèles aux couleurs et caractéristiques réelles dans les limites des procédés dimpression.

Alle Formate sind Nennwerte. Die Firma Cercom Ceramiche behält sich vor, die in diesem Katalog enthaltenen Informationen und Eigenschaften jederzeit zu ändern; sie gelten auf keinen Fall als gesetzlich bindend. Die Farben und ästhetischen Eigenschaften der Produkte kommen innrhalb der Möglichkeiten der Druckverfahren den tatsächlichen Eigenschaften so weit wie möglich nahe.

Все форматы являются номинальными. Cercom Ceramiche оставляет за собой заменять в любой момент данные и характеристики, приведенные в настоящем каталоге, которые в любом случае не считаются юридически обязательными. Цветовая окраска и эстетические характеристики изделий приближаются как можно больше к реальным, в пределах, допускаемых процессами печати.

CONSIGLI PER LA POSA - LAYING SUGGESTIONS - CONSEILS POUR LA POSE - VERLEGEHINWEISE - РЕКОМЕНДАЦИИ ПО УКЛАДКЕ

Stendere a terra alcuni metri (almeno 3 mq) per controllare l'effetto d'insieme. Posare il materiale attingendo da più scatole controllandone accuratamente calibro, tonalità e scelta. • Nella posa è consigliabile lasciare una fuga di 2 mm fra le piastrelle utilizzando stucco in tono. • La posa modulare è consigliata con una fuga di almeno 2 mm. • È comunque compito del progettista stabilire, in funzione della struttura e della destinazione d'uso del piano di calpestio, il corretto modo di applicazione delle piastrelle.

Lay some pieces of product (at least 3 sqm) to check the overall effect. Lay the material taking it from several boxes and carefully check its size accuracy, shade and material sorting. • In the lay-out is advisable to leave at least 2 mm joint between each tile and fill with grout of the same colour as the tile. • We recommend modular laying with a 2 mm - ¹³/₃₂ joint. • However, the designers has to establish the correct way of application of the tiles depending on the structure and the foreseen utilization of the floor.

Appuyer sur le sol quelques pieds (au moins 2 mc) pour apprécier l'effet global. Poser le matériel en le prenant de plusieurs boîtes et en contrôlant l'épaisseur, les nuances et la qualité des différentes pièces. • Lors de la pose, on recommande de laisser un joint de 2 mm entre les carreaux en utilisant un mastic du même ton. • La pose modulaire est calculée avec un joint de 2 mm. • D'ailleurs c'est le concepteur qui doit établir, sur la base de la structure et de la destination d'emploi du plan de piétinement, le procédé d'application correct des carreaux.

Eine Quadratmeter (min. 2 qm) auf dem Boden legen, um die Gesamtwirkung nachzuprüfen. Wir empfehlen Fliesen aus mehreren Kartons zu verlegen, nach einer sorgfältigen Prüfung des Kalibers, des Farbtons und der Sortierung. • Deswegen werden eine min. 2 mm Fuge zwischen den Fliesen und ein weiss oder grauer Kitt empfohlen. • Die Modulverlegung wird mit einer Mindestfuge von 2 mm empfohlen. Es ist auf jeden Fall Aufgabe des Planers, nach der Struktur und dem Verwendungszweck der Trittläche, die richtige Verlegeart der Fliesen zu bestimmen.

Разложите изделия на полу для проверки общего эффекта. Укладывать материал, тщательно проверяя калибр, тональность и сорт. • При укладке рекомендуется оставлять между плитками зазор в 2 мм, используя подходящую по тону замазку. • Модульную укладку рекомендуется выполнять со швом не менее 2 мм. • В любом случае является задачей проектировщика, в зависимости от структуры и назначения, определять соответствующий способ укладки плитки.



IN COLLABORAZIONE CON:



INCONTRA
Italian Contract Solutions



mm lampadari
Luce Italiana dall'1966

CE
GRUPPO ROMANI S.P.A. INDUSTRIE CERAMICHE VIA A. VOLTA 9, 23/25 42013 CASALGRANDE (RE)
05 001CPR2013-07-01
EN 14411:2012 Piastrille di ceramica pressate a secco, con assorbimento di acqua $E_p \leq 0,5\%$, per pavimentazioni interne ed esterne. Dry pressed ceramic tile, with water absorption $E_p \leq 0,5\%$, for internal and external floorings.

© Copyright 2019 Gruppo Romani S.p.A.

Gruppo Romani S.p.A. Industrie Ceramiche
www.grupporomanispa.com


Ceramics of Italy





DAL1975

CERCOM CERAMICHE

www.cercomceramiche.it

Via A. Volta 23/25 - 42013 Casalgrande (RE) Italy
Tel. +39-0522-998411/911
Fax Italy +39-0522-998910
Fax Export +39-0522-996218

