



VOLLEYBALL

Fall 2025



UNDER ARMOUR

THE ONLY WAY IS THROUGH.



VISION

TO INSPIRE YOU WITH PERFORMANCE
SOLUTIONS YOU NEVER KNEW
YOU NEEDED BUT CAN'T IMAGINE
LIVING WITHOUT.

MISSION

UNDER ARMOUR
MAKES YOU BETTER.



VOLLEYBALL

- 002 W'S VOLLEYBALL UNIFORMS
- 012 W'S VOLLEYBALL APPAREL
- 016 W'S VOLLEYBALL PROTECTIVE
- 017 W'S VOLLEYBALL FOOTWEAR
- 018 VOLLEYBALL SOCKS
- 020 M'S VOLLEYBALL UNIFORMS

- 024 MEN'S AF TRAINING
- 034 WOMEN'S AF TRAINING

- 040 UNIFORM ORDERING INFO



WOMEN'S VOLLEYBALL ARMOURFUSE

- Brilliant, vibrant team colors permanently fused directly into textiles
- Limitless customization, all-inclusive pricing with exclusive UA designs and customized prints
- 41 different colors and 18 prints available
- 6 piece minimum order





AF SHOWTIME LONGSLEEVE JERSEY

XS-2XL, OVERSIZE 3XL

STYLE	SIZE	PRICE
UVJS2W (W)	XS-2XL	\$106.50

- Lightweight, 4-way stretch performance fabric through the body
- Mesh fabric through the back and shoulder panels for increased breathability
- Fitted silhouette that doesn't sacrifice range of motion through the arms and chest
- Two-ply construction to provide durability through the arms

OVERSIZED SURCHARGE +\$5 PER SIZE
ALL BASE JERSEY DESIGN IS APPROVED FOR HS/ COLLEGIATE PLAY



AFSHOWTIME SHORTSLEEVE JERSEY

XS-2XL, OVERSIZE 3XL

STYLE	SIZE	PRICE
UVJSIW (W)	XS-2XL	\$101.50

- Lightweight, 4-way stretch performance fabric through the body
- Mesh fabric through the back and shoulder panels for increased breathability
- Fitted silhouette that doesn't sacrifice range of motion through the arms and chest
- Modern high low hem construction

OVERSIZED SURCHARGE +\$5 PER SIZE
ALL BASE JERSEY DESIGN IS APPROVED FOR HS/ COLLEGIATE PLAY



AF SHOWTIME SLEEVELESS JERSEY

XS-2XL, OVERSIZE 3XL, YSM-YLG

STYLE	SIZE	PRICE
UVJSLW (W)	XS-2XL	\$90.00
UVJSLG (G)	YSM-YLG	\$80.50

- Signature HeatGear® fabrication with 4-way stretch
- Mesh back panel for added breathability
- Double side seam panel for more tapered body fit
- Adult tall (+2") option available - applies to body and sleeve length
- Bomber inspired V-Neck collar

OVERSIZED SURCHARGE +\$5 PER SIZE
ALL BASE JERSEY DESIGN IS APPROVED FOR HS/ COLLEGIATE PLAY



DIG
NEW DESIGN FIRST SHIP: 6/1/2025

ELITE
NEW DESIGN FIRST SHIP: 6/1/2025





ACE

SET

BLOCK



ARMOURFUSE SLEEVE

SINGLE PAIR | XXS-2XL, OVERSIZE 3XL, 4XL

STYLE	SIZE	PRICE
UJVS1W (W)	XXS-2XL	\$40.00

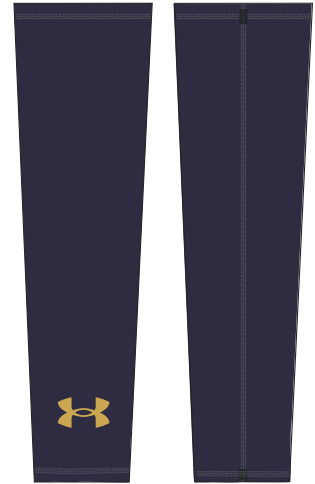
- 2-Ply performance stretch fabric
- Compression fit

OVERSIZED SURCHARGE +\$5 PER SIZE
 ALL BASE JERSEY DESIGN IS APPROVED FOR HS/COLLEGIATE PLAY



DIG

NEW DESIGN FIRST SHIP: 6/1/2025



ELITE

NEW DESIGN FIRST SHIP: 6/1/2025



ACE



SET



AF LINE SHOT SHORT 3.0

XS-2XL, OVERSIZE 3XL, YSM-YLG

4" SHORT	SIZE	PRICE
UJVS3W (W)	XS-2XL	\$67.00
UJVS3G (G)	YSM-YLG	\$62.00
3" SHORT	SIZE	PRICE
UJVS6W (W)	XS-2XL	\$67.00

- Lightweight, 4-Way stretch fabrication improves range of motion and dries faster
- Smooth flatlock seams prevent chafing
- 4" and 3" inseam available, Girls only available in 4"
- Sublimated Back Wasteband, Options to add team name, team logo

BLK GPH MDN RED RYL

OVERSIZED SURCHARGE +\$5 PER SIZE



TRIBLOCK



MOTO BLOCK



REBEL



AF GAMETIME LONGSLEEVE JERSEYS

LAST SEASON OFFERED

XS-2XL, YSM-YLG

CREWNECK	SIZE	PRICE
UJVIG2W (W)	XS-2XL	\$96.00
UJVIG2G (G)	YSM-YLG	\$91.00

V-NECK	SIZE	PRICE
UJVIG4W (W)	XS-2XL	\$96.00
UJVIG4G (G)	YSM-YLG	\$91.00

New construction follows same great fit of UA Showtime collection.

- 5 oz. lightweight fabric in body, 7 oz. fabric in arms for extra durability
- Armourfuse® Printed Signature HeatGear fabrication with 4-way stretch

ALL BASE JERSEY DESIGN IS APPROVED FOR HS/COLLEGIATE PLAY



ATTACK LINE

NEW DESIGN FIRST SHIP: 6/1/2025

AF GAMETIME SHORTSLEEVE JERSEYS

LAST SEASON OFFERED

XS-2XL, YSM-YLG

CREWNECK	SIZE	PRICE
UJVIG1W (W)	XS-2XL	\$88.00
UJVIG1G (G)	YSM-YLG	\$82.50

V-NECK	SIZE	PRICE
UJVIG3W (W)	XS-2XL	\$88.00
UJVIG3G (G)	YSM-YLG	\$82.50

New construction follows same great fit of UA Showtime collection.

- 5 oz. lightweight fabric in body, 7 oz. fabric in outer sleeve for extra durability
- Armourfuse® Printed Signature HeatGear fabrication with 4-way stretch

ALL BASE JERSEY DESIGN IS APPROVED FOR HS/COLLEGIATE PLAY



RALLY



FREE BALL

ALL GAMETIME JERSEY DESIGNS AVAILABLE IN SHORTSLEEVE/LONGSLEEVE CREW NECK & V-NECK





SLIDE SLAM



TONAL SHOT



BORDERLINE

ALL GAMETIME JERSEY DESIGNS AVAILABLE IN SHORTSLEEVE/LONGSLEEVE CREW NECK & V-NECK



ARMOURFUSE® UNIFORMS // ORDERING INFORMATION AND CUSTOMER SERVICE: 1-888-871-0990 // www.underarmourteamuniforms.com

FILL-IN LIFECYCLE TIMING FOUND ON PAGE 46. DECORATION OPTIONS AND ORDERING INFORMATION ARE AVAILABLE ON PAGES 40-46.





SAND DIG

NEW DESIGN FIRST SHIP: 6/1/2025

AF BEACH VOLLEYBALL JERSEY

XS-2XL, OVERSIZE 3XL

JERSEY	SIZE	PRICE
UJV/B1W (W)	XS-2XL	\$77.50

- Signature 4-Way Stetch Heatgear Fabrication
- Mesh underarm inserts for breathability
- Armhole construction to increase shoulder mobility

OVERSIZED SURCHARGE +\$5 PER SIZE
ALL BASE JERSEY DESIGN IS APPROVED FOR HS/COLLEGIATE PLAY



BOUNCE

NEW DESIGN FIRST SHIP: 6/1/2025

1370635**UA VB POWERHOUSE LS JERSEY 2.0**

\$45.00 | FITTED | XS-2XL

GIRLS: 1370638 | \$40.00 | YSM-YLG

FIRST SHIP: C/O // LAST SHIP: 12/19/2025

- Smooth, lightweight, fast-drying fabric for superior performance
- Upper sleeve & side mesh panels for added breathability
- 7 oz. lower sleeve for extra durability
- 4-way stretch construction & exaggerated armholes for better range of motion
- Bomber inspired V-Neck color
- White mesh color blocking on V-neck collar & side body inserts

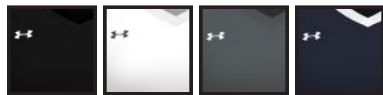
79% POLYESTER, 21% ELASTANE

SOLID COLORWAYS: 001, 100 & 012

THE BASE UNIFORM DESIGN IS APPROVED FOR HS PLAY

heatgear

G = GIRLS OFFERING



001 G BLK/WHT (SOLID)
 100 G WHT/PITCH (SOLID)
 012 PITCH/WHT (SOLID)
 410 G MDN/WHT



600 RED/WHT
 400 RYL/WHT
 301 FGR/WHT
 500 PUR/WHT



V-NECK DETAIL

1377342
UA VB POWERHOUSE SS JERSEY 2.0

\$40.00 | **FITTED** | XS-2XL

GIRLS: 1377343 | \$35.00 | YSM-YLG

FIRST SHIP: C/O // LAST SHIP: 12/19/2025

- Smooth, lightweight, fast-drying fabric for superior performance
- Upper sleeve & side mesh panels for added breathability
- 4-way stretch construction & exaggerated armholes for better range of motion
- Bomber inspired V-Neck color
- White mesh color blocking on V-neck collar & side body inserts

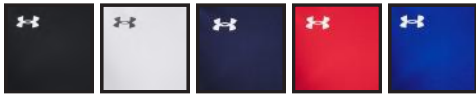
79% POLYESTER, 21% ELASTANE

SOLID COLORWAYS: 001 & 100

THE BASE UNIFORM DESIGN IS APPROVED FOR HS PLAY

heatgear

G = GIRLS OFFERING



001 G BLK/WHT (SOLID)	100 G WHT/PICH (SOLID)	410 MDN/WHT	600 RED/WHT	400 RYL/WHT
------------------------------------	-------------------------------------	-----------------------	-----------------------	-----------------------



NEW**1389623****UA TEAM SHORTY 4"**\$30.00 | **COMPRESSION** | XS-2XL**YOUTH: 6001943** | \$25.00 | YSM-YLG

FIRST SHIP: 12/20/2024

- Super-light HeatGear® fabric delivers superior coverage without weighing you down
- Material wicks sweat & dries really fast
- 4-way stretch construction moves better in every direction
- Anti-odor technology prevents the growth of odor-causing microbes
- Removed front seam for maximum comfort
- Updated waistband elastic with softer hand-feel
- Inseam: 4"
- Heatseal Logo

87% POLYESTER, 13% ELASTANE

heatgear™ Y = YOUTH OFFERING

001 Y 410 Y 600 400
 BLK/WHT MDN/WHT RED/WHT RYL/WHT



NEW

1389624

UA TEAM SHORTY 3"

\$30.00 | **COMPRESSION** | XS-2XL

FIRST SHIP: 12/20/2024

- Super-light HeatGear® fabric delivers superior coverage without weighing you down
- Material wicks sweat & dries really fast
- 4-way stretch construction moves better in every direction
- Anti-odor technology prevents the growth of odor-causing microbes
- Removed front seam for maximum comfort
- Updated waistband elastic with softer hand-feel
- Inseam: 3"
- Heatseal Logo



87% POLYESTER, 13% ELASTANE

heatgear



001 BLK/WHT 410 MDN/WHT 600 RED/WHT 400 RYL/WHT



301 GRN/WHT 601 DMN/WHT 500 PUR/WHT 625 CRD/WHT

PROTECTIVE

UA21480

UA STRIVE 3 VOLLEYBALL KNEE PAD

\$40.00 | SOLD IN PAIRS | SM, MD, LG

FIRST SHIP: C/O

- Featuring patented McDavid HEX technology, the leading protective padding in the game. HEX is lightweight and anatomically countoured, moving freely with your body to provide exceptional protection. The preferred choice for athletes around the world.
- Dual Density foam construction for protection
- Low-profile design for enhanced comfort and mobility
- High abrasion pad cover for better durability and sliding
- Countour circular knit sleeve for added comfort, fit, and feel with less bunching

48% NYLON, 37% POLYESTER, 15% ELASTODIENE, PE FOAM

POWERED BY:  MCDAVID



00001
BLK/WHT



90002
WHT/BLK

UA21500

ARMOUR® 3 VOLLEYBALL KNEE PAD

\$30.00 | SOLD IN PAIRS | SM, MD, LG

GIRLS: UA21520 | \$28.00 | OSFA

FIRST SHIP: C/O

- Circular knit construction for unmatched comfort, fit, and feel
- Dual density EVA foam for impact protection without the bulk
- Hinged design allows maximum mobility

61% POLYESTER, 25% NYLON, 14% ELASTODIENE, PE FOAM, EVA FOAM

GIRLS OFFERED IN ALL COLORS



00001
BLK/WHT



90002
WHT/BLK

3027083 UA W FLOW HIGHLIGHT ACE

\$140.00 | SIZES: 5-14

FIRST SHIP: C/O

- UA FLOW midsole technology for enhanced grip, underfoot comfort and energy displacement
- Intelliknit upper and bootie for breathability and dynamic compression for comfort with stretch and support where needed
- Molded heel & plush collar foams for lockdown & comfort
- Integrated Pebax shank for midfoot stability
- Rubber printed toe for abrasion resistance
- Women's specific sockliner for added comfort



3027084 UA W FLOW ACE LOW

\$125.00 | SIZES: 5-13, 14

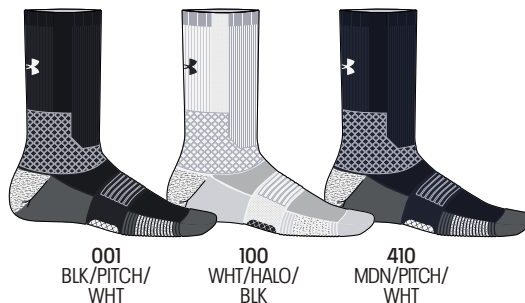
FIRST SHIP: C/O

- UA FLOW midsole technology for enhanced grip, underfoot comfort and energy displacement
- Intelliknit upper and bootie for breathability and dynamic compression for comfort with stretch and support where needed
- Molded heel & plush collar foams for lockdown & comfort
- Integrated Pebax shank for midfoot stability
- Rubber printed toe for abrasion resistance
- Women's specific sockliner for added comfort



1380979**UA PLAYMAKER TEAM CREW UNISEX****\$18.00 | SINGLE PAIR****SM** (YOUTH 13.5K-4.5 / WOMEN'S 4-6),**MD** (YOUTH 4.5-7 / MEN'S 7-8.5 / WOMEN'S 6-10),**LG** (MEN'S 8.5-13 / WOMEN'S 10-14), **XL** (MEN'S 13-16)**FIRST SHIP: 12/20/2024**

- Sweat-activated ArmourGrip™ yarns on forefoot & back of heel help prevent slippage in cleats
- Max cushioning in toe, forefoot & heel for added protection where you need it most
- 360° ankle cushioning for a more secure fit in shoes or cleats
- Mesh panels on top of foot for added breathability
- Durable material wicks sweat & dries really fast
- Anti-odor technology helps prevent odor in the sock
- Dynamic arch support helps reduce foot fatigue
- Fitted heel contours around your foot for a better fit
- Left/Right specific fit

94% POLYESTER, 4% ELASTANE, 2% NYLON**1386251****UA TEAM CREW UNISEX****\$14.00 | SINGLE PAIR****SM** (YOUTH 13.5K-4.5 / WOMEN'S 4-6),**MD** (YOUTH 4.5-7 / MEN'S 7-8.5 / WOMEN'S 6-10),**LG** (MEN'S 8.5-13 / WOMEN'S 10-14), **XL** (MEN'S 13-16)**YOUTH: 1386252 | \$12.00****XS** (10.5K-13K), **SM** (YOUTH 13.5K-4.5)**MD** (YOUTH 4.5-7)**FIRST SHIP: 12/20/2024**

- Medium cushioning throughout foot for comfort & protection
- Mesh panels on top of foot for added breathability
- Durable material wicks sweat & dries really fast
- Anti-odor technology helps prevent odor in the sock
- Embedded arch support helps reduce foot fatigue
- Fitted heel contours around your foot for a better fit
- Left/Right specific fit

95% POLYESTER, 5% ELASTANE**Y = YOUTH OFFERING**

NEW

1386311

UA TRAINING COTTON CREW 3-PACK UNISEX

\$16.00 | THREE PAIR

SM (WOMEN'S 4-6),

MD (MEN'S 7-8.5 / WOMEN'S 6-10),

LG (MEN'S 8.5-13 / WOMEN'S 10-14), XL (MEN'S 13-16)

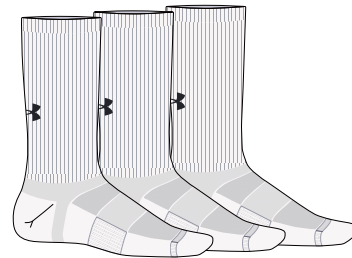
FIRST SHIP: 12/20/2024

- Lightweight, soft cotton-blend fabric for all-day comfort
- Material wicks sweat & dries really fast
- Locked-in fit design keeps sock securely on heel for an adjustment free fit that won't fall down
- Medium cushioning placed strategically throughout foot protects high-impact areas without added bulk
- Mesh panels on top of foot for added breathability
- Built-in arch support helps reduce foot fatigue

64% COTTON, 31% POLYESTER, 5% ELASTANE

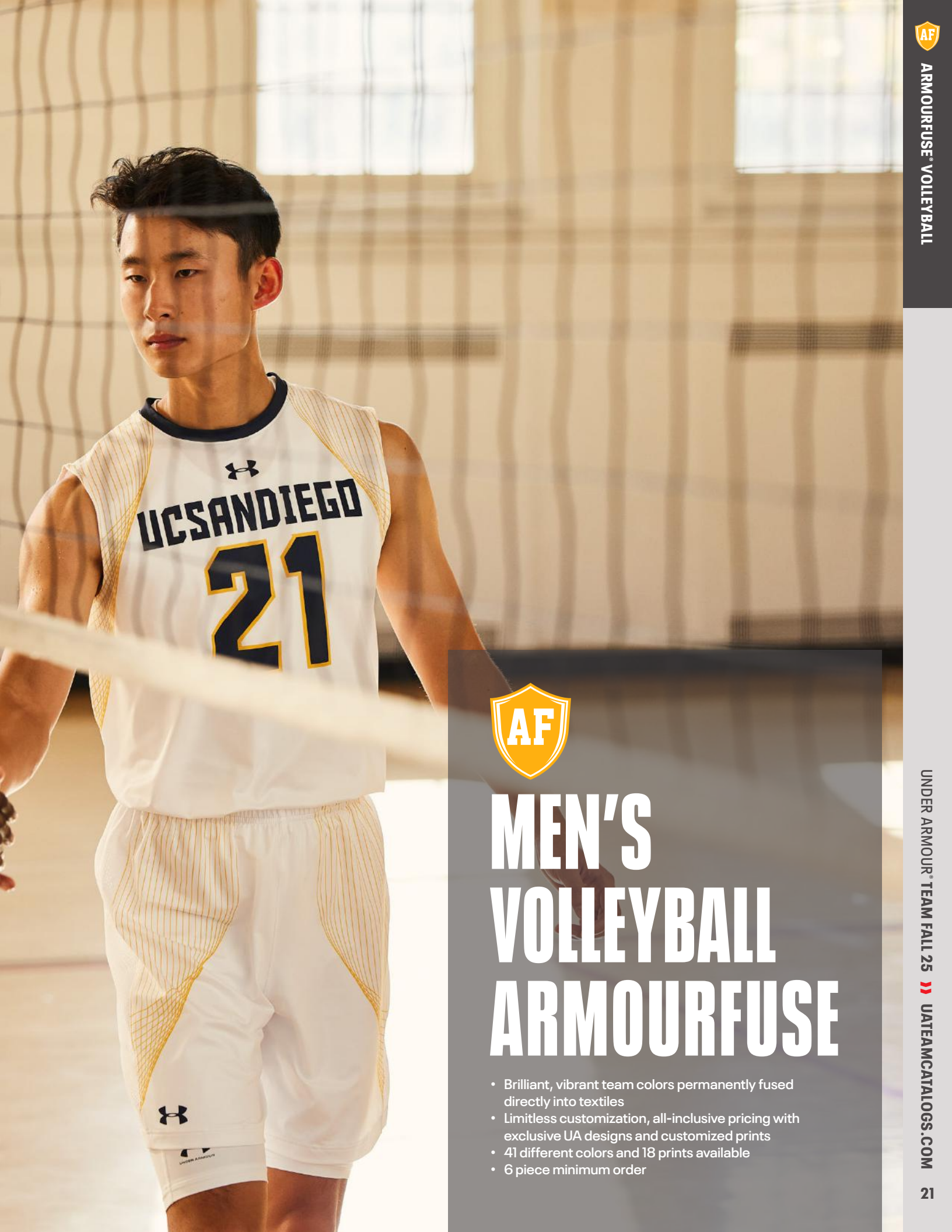


001
BLK/BLK/WHT



100
WHT/WHT/BLK





MEN'S VOLLEYBALL ARMOURFUSE

- Brilliant, vibrant team colors permanently fused directly into textiles
- Limitless customization, all-inclusive pricing with exclusive UA designs and customized prints
- 41 different colors and 18 prints available
- 6 piece minimum order



AF DIG SHORTSLEEVE JERSEY

XS-2XL, OVERSIZE 3XL

STYLE	SIZE	PRICE
UJVJ3XM (M)	XS-2XL	\$88.00

- Signature 4-way stretch HeatGear front, ventilated pin-dot mesh back for optimal performance
- +2" body length available (see page 44 for details)

BASE JERSEY DESIGN IS APPROVED FOR HS PLAY
OVERSIZED SURCHARGE +\$5 PER SIZE



AF DIG TANK 2.0

XS-2XL, OVERSIZE 3XL

STYLE	SIZE	PRICE
UJVJ2XM (M)	XS-2XL	\$77.50

- Signature 4-way stretch HeatGear front, ventilated pin-dot mesh back for optimal performance
- +2" body length available (see page 44 for details)

BASE JERSEY DESIGN IS APPROVED FOR HS PLAY
OVERSIZED SURCHARGE +\$5 PER SIZE



AF DIG SHORT 2.0

XS-2XL, OVERSIZE 3XL

STYLE	SIZE	PRICE
UVVSSM (M)	XS-2XL	\$77.50

- Signature 4-way stretch HeatGear knit
- 7 1/2" inseam
- -1" & -2" inseam length available (see page 44 for details)

OVERSIZED SURCHARGE +\$5 PER SIZE

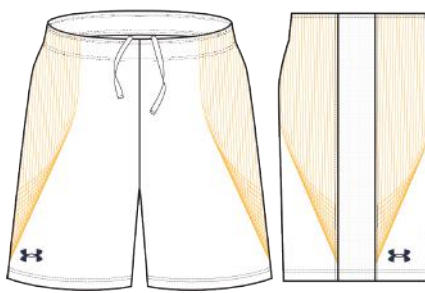


TARGET

NEW DESIGN FIRST SHIP: 6/1/2025

ALL VOLLEYBALL DESIGNS AVAILABLE IN SHORTSLEEVE & TANK





SOAR

NET TWIST

STREAK

ALL VOLLEYBALL DESIGNS AVAILABLE IN SHORTSLEEVE & TANK



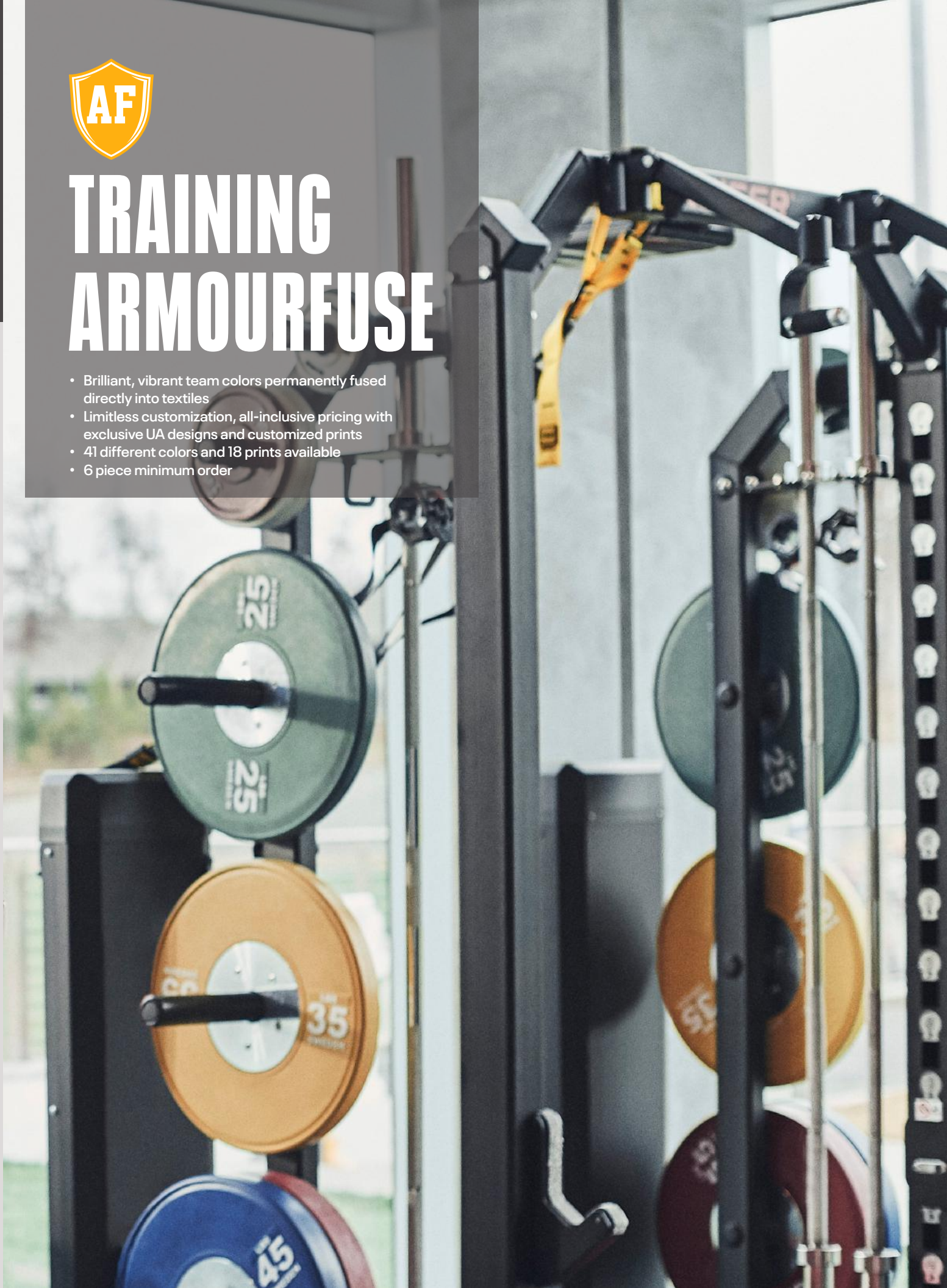
ARMOURFUSE® UNIFORMS // ORDERING INFORMATION AND CUSTOMER SERVICE: 1-888-871-0990 // www.underarmourteamuniforms.com

FILL-IN LIFECYCLE TIMING FOUND ON PAGE 46. DECORATION OPTIONS AND ORDERING INFORMATION ARE AVAILABLE ON PAGES 40-46.



TRAINING ARMOURFUSE

- Brilliant, vibrant team colors permanently fused directly into textiles
- Limitless customization, all-inclusive pricing with exclusive UA designs and customized prints
- 41 different colors and 18 prints available
- 6 piece minimum order



NEW

AF TRAINING HOODY

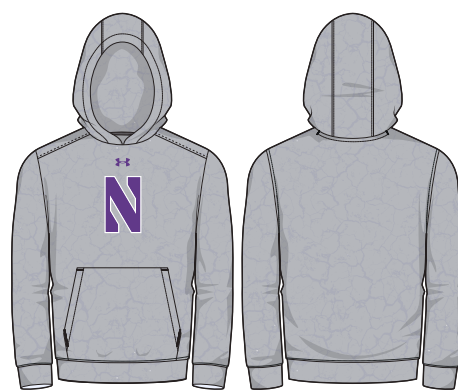
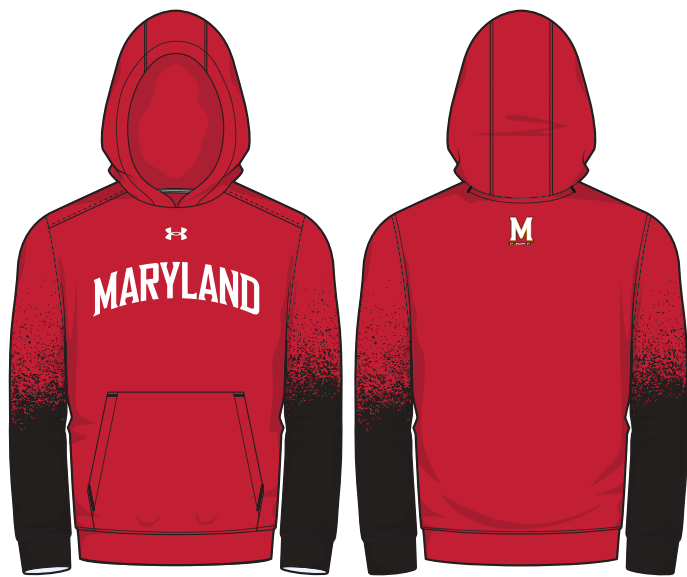
XS-2XL, OVERSIZE 3XL-4XL, YSM-YXL

STYLE	SIZE	PRICE
UJGFHM (M)	XS-2XL	\$124.00
UJGFHY (Y)	YSM-YXL	\$114.00

•8.26 oz. Fleece with stretch lined 3-panel hood

 OVERSIZED SURCHARGE +\$5 PER SIZE
 ADDITIONAL LENGTH OPTIONS FOUND ON PAGE 44

SPEED

SPRINT

SCOUT

SPECKLE
NEW DESIGN FIRST SHIP: 6/1/2025



AF LONGSLEEVE HOODED SHOOTER

XS-2XL, OVERSIZE 3XL-4XL, YSM-YXL

STYLE	SIZE	PRICE
UJGTHDM (M)	SM-2XL	\$119.00
UJGTHDY (Y)	YSM-YXL	\$114.00

- New lightweight 4.8 oz. fabric with increased stretch for ultimate comfort

OVERSIZED SURCHARGE +\$5 PER SIZE
ADDITIONAL LENGTH OPTIONS FOUND ON PAGE 44



SPECKLE

NEW DESIGN FIRST SHIP: 6/1/2025

AF SHORTSLEEVE HOODED SHOOTER

XS-2XL, OVERSIZE 3XL-4XL, YSM-YXL

STYLE	SIZE	PRICE
UJGTSSM (M)	SM-2XL	\$114.00
UJGTSSY (Y)	YSM-YXL	\$109.00

- New lightweight 4.8 oz. fabric with increased stretch for ultimate comfort

OVERSIZED SURCHARGE +\$5 PER SIZE
ADDITIONAL LENGTH OPTIONS FOUND ON PAGE 44



SPECKLE

NEW DESIGN FIRST SHIP: 6/1/2025

AF SLEEVELESS HOODED SHOOTER

XS-2XL, OVERSIZE 3XL-4XL

STYLE	SIZE	PRICE
UJGTHVM (M)	SM-2XL	\$94.00

- New lightweight 4.8 oz. fabric with increased stretch for ultimate comfort

OVERSIZED SURCHARGE +\$5 PER SIZE
ADDITIONAL LENGTH OPTIONS FOUND ON PAGE 44



SPECKLE

NEW DESIGN FIRST SHIP: 6/1/2025

AF SHORTSLEEVE ¼ ZIP

XS-2XL, OVERSIZE 3XL-4XL

STYLE	SIZE	PRICE
UJGQZVM (M)	SM-2XL	\$120.00

OVERSIZED SURCHARGE +\$5 PER SIZE
ADDITIONAL LENGTH OPTIONS FOUND ON PAGE 44



SPECKLE

NEW DESIGN FIRST SHIP: 6/1/2025





SPEED



SPRINT



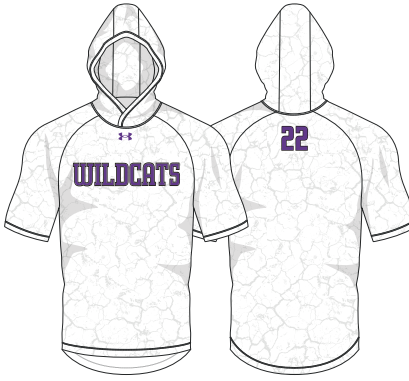
SCOUT



SPEED



SPRINT



SCOUT



SPEED



SPRINT



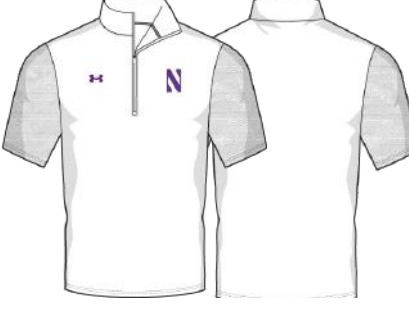
SCOUT



SPEED



SPRINT



SCOUT



AF TRAINING ¼ ZIP

XS-2XL, OVERSIZE 3XL-4XL

- New lightweight 4.8 oz. fabric with increased stretch for ultimate comfort

STYLE	SIZE	PRICE
UJGQZLM (M)	SM-2XL	\$130.00

OVERSIZED SURCHARGE +\$5 PER SIZE
 ADDITIONAL LENGTH OPTIONS FOUND ON PAGE 44



SPECKLE

NEW DESIGN FIRST SHIP: 6/1/2025

AF TRAINING LONGSLEEVE TEE

XS-2XL, OVERSIZE 3XL-4XL, YSM-YXL

STYLE	SIZE	PRICE
UJGJL2M (M)	XS-2XL	\$90.00
UJGJL2Y (Y)	YSM-YXL	\$86.00

- New lightweight 4.8 oz. fabric with increased stretch for ultimate comfort

OVERSIZED SURCHARGE +\$5 PER SIZE
 ADDITIONAL LENGTH OPTIONS FOUND ON PAGE 44



SPECKLE

NEW DESIGN FIRST SHIP: 6/1/2025

AF TRAINING SHORTSLEEVE TEE

XS-2XL, OVERSIZE 3XL-4XL, YSM-YXL

LOOSEST	SIZE	PRICE
UJGS2M (M)	XS-2XL	\$75.00
UJGS2Y (Y)	YSM-YXL	\$71.00

- New lightweight 4.8 oz. fabric with increased stretch for ultimate comfort

OVERSIZED SURCHARGE +\$5 PER SIZE
 ADDITIONAL LENGTH OPTIONS FOUND ON PAGE 44



SPECKLE

NEW DESIGN FIRST SHIP: 6/1/2025





SPEED



SPRINT



SCOUT



SPEED



SPRINT



SCOUT



SPEED



SPRINT



SCOUT



AF TRAINING SHORTS

XS-2XL, OVERSIZE 3XL-5XL, YSM-YXL

POCKETED SHORT	SIZE	PRICE
UJGS3PM (M)	XS-2XL	\$75.00
UJGS3PY (Y)	YSM-YXL	\$70.00

NON-POCKETED SHORT	SIZE	PRICE
UJGS3M (M)	XS-2XL	\$70.00
UJGS3Y (Y)	YSM-YXL	\$65.00

9" INSEAM FOR POCKETED AND NON-POCKETED SHORT
OVERSIZED SURCHARGE +\$5 PER SIZE
ADDITIONAL LENGTH OPTIONS FOUND ON PAGE 394



SPECKLE

NEW DESIGN FIRST SHIP: 6/1/2025

NEW

AF TRAINING COMPRESSION TANK

XS-2XL, OVERSIZE 3XL-4XL

STYLE	SIZE	PRICE
UJGJCTM (M)	XS-2XL	\$65.00

OVERSIZED SURCHARGE +\$5 PER SIZE
ADDITIONAL LENGTH OPTIONS FOUND ON PAGE 44



SPECKLE

NEW DESIGN FIRST SHIP: 6/1/2025

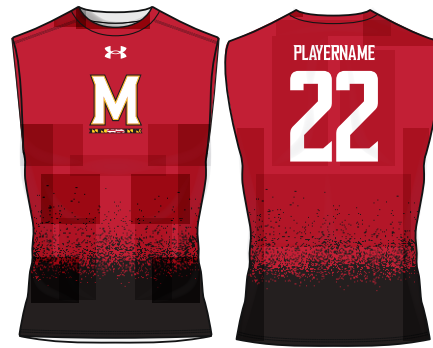
NEW

AF TRAINING COMPRESSION SLEEVELESS

XS-2XL, OVERSIZE 3XL-4XL

STYLE	SIZE	PRICE
UJGJCM (M)	XS-2XL	\$65.00

OVERSIZED SURCHARGE +\$5 PER SIZE
ADDITIONAL LENGTH OPTIONS FOUND ON PAGE 44



SPECKLE

NEW DESIGN FIRST SHIP: 6/1/2025

NEW

AF TRAINING COMPRESSION SLEEVELESS MOCK

XS-2XL, OVERSIZE 3XL-4XL

STYLE	SIZE	PRICE
UJGJCM (M)	XS-2XL	\$70.00

OVERSIZED SURCHARGE +\$5 PER SIZE
ADDITIONAL LENGTH OPTIONS FOUND ON PAGE 44



SPECKLE

NEW DESIGN FIRST SHIP: 6/1/2025





SPEED



SPRINT



SCOUT



SPEED



SPRINT



SCOUT



SPEED



SPRINT



SCOUT



SPEED



SPRINT



SCOUT



NEW

AF TRAINING COMPRESSION SHORTSLEEVE

XS-2XL, OVERSIZE 3XL-4XL

STYLE	SIZE	PRICE
UJGJCSM (M)	XS-2XL	\$65.00

OVERSIZED SURCHARGE +\$5 PER SIZE
ADDITIONAL LENGTH OPTIONS FOUND ON PAGE 44



SPECKLE

NEW DESIGN FIRST SHIP: 6/1/2025

NEW

AF TRAINING COMPRESSION HALF SLEEVE

XS-2XL, OVERSIZE 3XL-4XL

STYLE	SIZE	PRICE
UJGJHSM (M)	XS-2XL	\$70.00

OVERSIZED SURCHARGE +\$5 PER SIZE
ADDITIONAL LENGTH OPTIONS FOUND ON PAGE 44



SPECKLE

NEW DESIGN FIRST SHIP: 6/1/2025

NEW

AF TRAINING COMPRESSION LONGSLEEVE

XS-2XL, OVERSIZE 3XL-4XL

STYLE	SIZE	PRICE
UJGJCLM (M)	XS-2XL	\$75.00

OVERSIZED SURCHARGE +\$5 PER SIZE
ADDITIONAL LENGTH OPTIONS FOUND ON PAGE 44



SPECKLE

NEW DESIGN FIRST SHIP: 6/1/2025




SPEED

SPRINT

SCOUT

SPEED

SPRINT

SCOUT

SPEED

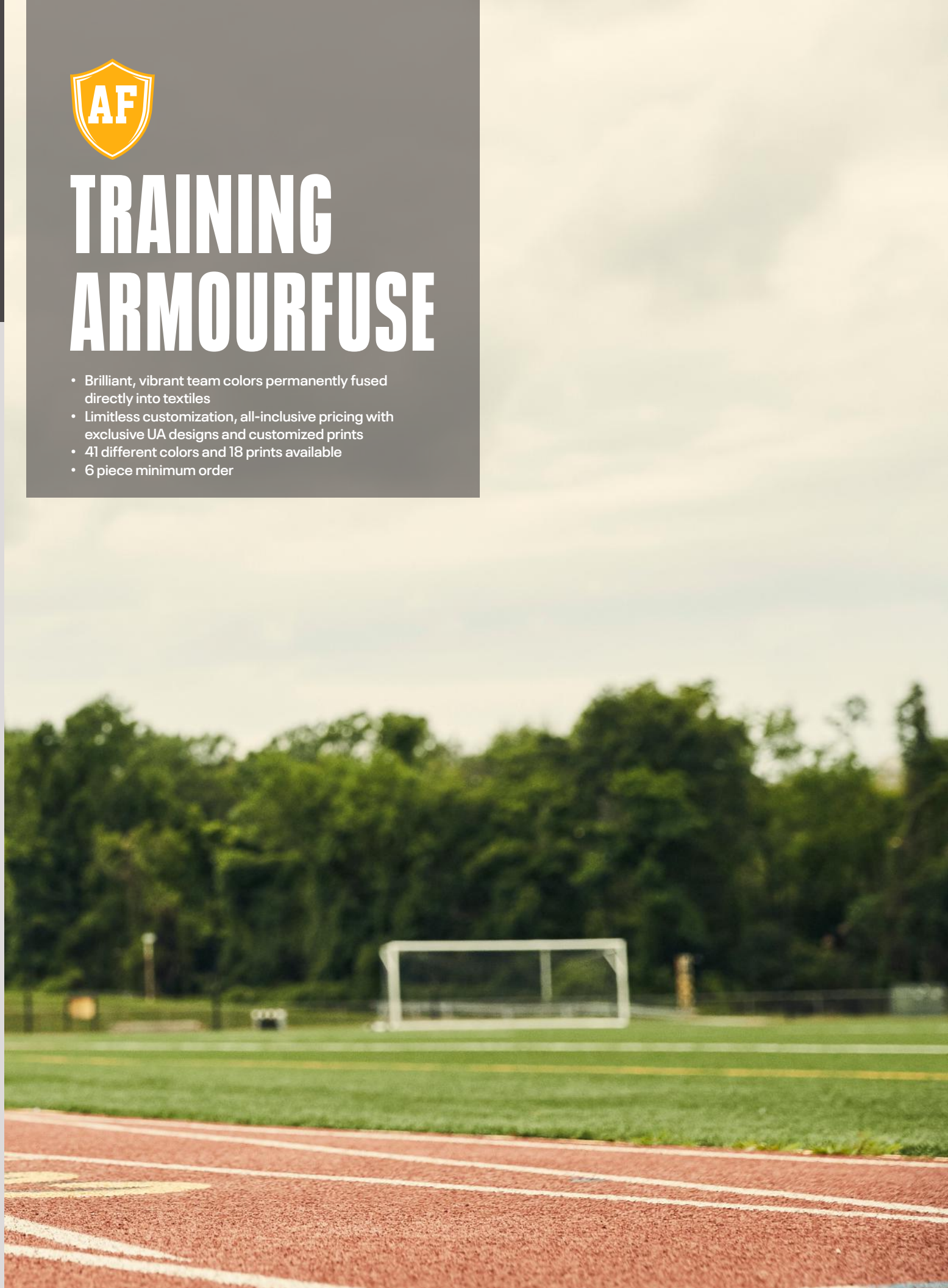
SPRINT

SCOUT



TRAINING ARMOURFUSE

- Brilliant, vibrant team colors permanently fused directly into textiles
- Limitless customization, all-inclusive pricing with exclusive UA designs and customized prints
- 41 different colors and 18 prints available
- 6 piece minimum order



NEW
AF TRAINING HOODY

XS-2XL, OVERSIZE 3XL, YSM-YXL

STYLE	SIZE	PRICE
UJGFHW (W)	XS-2XL	\$124.00
UJGFHY (Y)	YSM-YXL	\$114.00

•8.26 oz. Fleece with stretch lined 3-panel hood

OVERSIZED SURCHARGE +\$5 PER SIZE
 ADDITIONAL LENGTH OPTIONS FOUND ON PAGE 44



SPEED



SPRINT



SCOUT



SPECKLE

NEW DESIGN FIRST SHIP: 6/1/2025



AF TRAINING ½ ZIP

XS-2XL, OVERSIZE 3XL

STYLE	SIZE	PRICE
UJGHZLW (W)	XS-2XL	\$130.00

- New lightweight 4.8 oz. fabric with increased stretch for ultimate comfort

OVERSIZED SURCHARGE +\$5 PER SIZE
ADDITIONAL LENGTH OPTIONS FOUND ON PAGE 44



SPECKLE

NEW DESIGN FIRST SHIP: 6/1/2025

AF SHORTSLEEVE HOODED SHOOTER

SM-2XL, OVERSIZE 3XL, YSM-YXL

STYLE	SIZE	PRICE
UJGTSSW (W)	SM-2XL	\$114.00
UJGTSSY (Y)	YSM-YXL	\$109.00

- New lightweight 4.8 oz. fabric with increased stretch for ultimate comfort

OVERSIZED SURCHARGE +\$5 PER SIZE
ADDITIONAL LENGTH OPTIONS FOUND ON PAGE 44



SPECKLE

NEW DESIGN FIRST SHIP: 6/1/2025





SPEED



SPRINT



SCOUT



SPEED



SPRINT



SCOUT



AF TRAINING LONGSLEEVE TEE

XS-2XL, OVERSIZE 3XL, YSM-YXL

LOOSE LST	SIZE	PRICE
UJGL2W (W)	XS-2XL	\$90.00
UJGL2Y (Y)	YSM-YXL	\$86.00

- New lightweight 4.8 oz. fabric with increased stretch for ultimate comfort

OVERSIZED SURCHARGE +\$5 PER SIZE
ADDITIONAL LENGTH OPTIONS FOUND ON PAGE 44



SPECKLE

NEW DESIGN FIRST SHIP: 6/1/2025

AF TRAINING SHORTSLEEVE TEE

XS-2XL, OVERSIZE 3XL, YSM-YXL

LOOSE SST	SIZE	PRICE
UJGS2W (W)	XS-2XL	\$75.00
UJGS2Y (Y)	YSM-YXL	\$71.00

- New lightweight 4.8 oz. fabric with increased stretch for ultimate comfort

OVERSIZED SURCHARGE +\$5 PER SIZE
ADDITIONAL LENGTH OPTIONS FOUND ON PAGE 44



SPECKLE

NEW DESIGN FIRST SHIP: 6/1/2025

AF TRAINING SHORTS

XS-2XL, OVERSIZE 3XL, YSM-YXL

POCKETED SHORT	SIZE	PRICE
UJGS3PW (W)	XS-2XL	\$75.00
UJGS3PY (Y)	YSM-YXL	\$70.00

NON-POCKETED SHORT	SIZE	PRICE
UJGS3W (W)	XS-2XL	\$70.00
UJGS3Y (Y)	YSM-YXL	\$65.00

HEADBAND	SIZE	PRICE
UJLHBW1 (W)	OSFA	\$34.00

5" INSEAM FOR POCKETED AND NON-POCKETED SHORT
OVERSIZED SURCHARGE +\$5 PER SIZE
ADDITIONAL LENGTH OPTIONS FOUND ON PAGE 44



SPECKLE

NEW DESIGN FIRST SHIP: 6/1/2025





SPEED



SPRINT



SCOUT



SPEED



SPRINT



SCOUT



SPEED



SPRINT

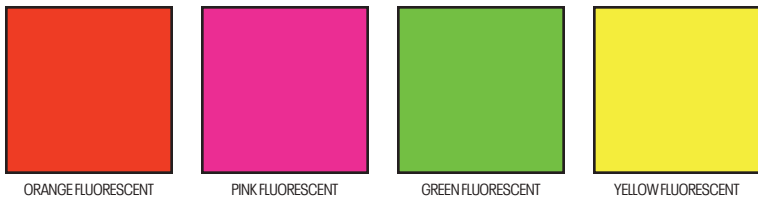


SCOUT

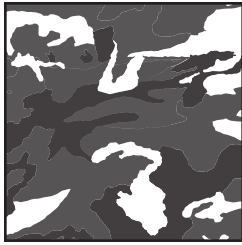
ARMOUR FUSE



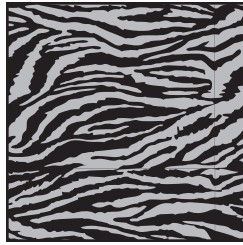
FLUORESCENTS (NOT CURRENTLY AVAILABLE IN TONAL PRINTS OR ON GAMEDAY PRODUCT)



Prints available in all ArmourFuse colors. (Fluorescents not currently available in tonal prints)



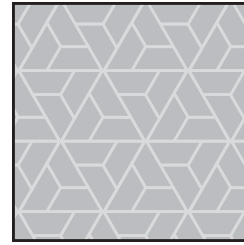
WOODLAND CAMO



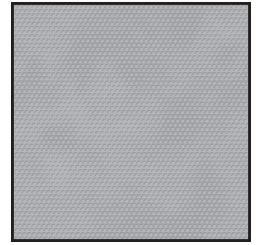
BENGAL



BLUR



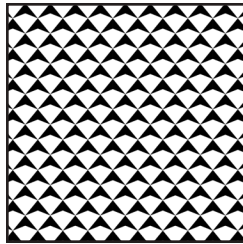
RAZOR



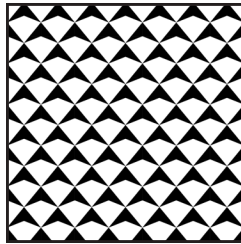
SCALE



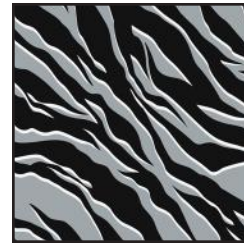
SPLINTER



SHIELD MICRO



SHIELD MID



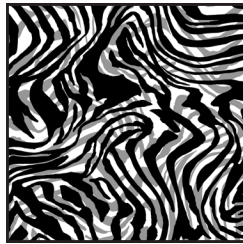
TIGER MICRO



TIGER MACRO



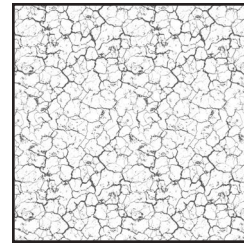
ZEBRA MICRO



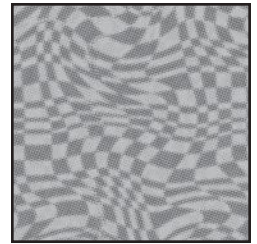
ZEBRA MACRO



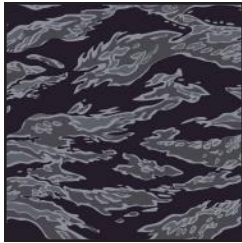
ABC CAMO



CRACKLE



HAFITONE CHECKER



TIGER CAMO



FLORAL
(Not available on Gameday)

DESERT CAMO (LOCKED COLOR COMBINATIONS, CANNOT BE ALTERED)



DESERT
WOODLAND CAMO

STOCK DECORATION OPTIONS

SCREEN PRINT	ONE COLOR	TWO COLORS
Team Name	\$5.50	\$10.50
Team Mascot/Logo	\$5.50	\$10.50
Front + Back Numbers	\$12.00	\$17.00

TWILL	ONE COLOR	TWO COLORS
Team Name	\$22.00	\$27.00
Front + Back Numbers	\$27.00	\$32.00
Player Names	\$22.00	
ArmourFuse Twill Patch (Max 3"x3")	\$11.00	\$11.00

EMBROIDERY	ONE COLOR	TWO COLORS
Team Name (up to 2")	\$10.00	\$10.00

see page 44 for Embroidered Mascot/Logo pricing

ADDITIONAL STOCK OPTIONS & NOTES

- Player Numbers Per Location = 1/2 of above
"Front + Back Numbers" pricing
- Player Name Directly On Jersey Only (No Nameplates)
- ArmourFuse Twill = Twill Pricing +\$10
- Add Tail to Script Font Twill Team Name +\$10
- Add Embroidery to Twill Tail +\$10
- Non-Stock designs and lettering may require additional charge at Under Armour's discretion (call for quote)

FONT OPTIONS

BADGER

ABCDEFGHIJKLMNOPQRSTUVWXYZ
0123456789

BEAR

ABCDEFGHIJKLMNOPQRSTUVWXYZ
0123456789

CADET

ABCDEFGHIJKLMNOPQRSTUVWXYZ
0123456789

FULL BLOCK

ABCDEFGHIJKLMNOPQRSTUVWXYZ
0123456789

TERRAFONT

ABCDEFGHIJKLMNOPQRSTUVWXYZ
0123456789

PREMIER

ABCDEFGHIJKLMNOPQRSTUVWXYZ
0123456789

TUSCAN

ABCDEFGHIJKLMNOPQRSTUVWXYZ
0123456789

UNDENIABLE

ABCDEFGHIJKLMNOPQRSTUVWXYZ
0123456789

UA COLLEGIATE SANS

ABCDEFGHIJKLMNOPQRSTUVWXYZ
0123456789

UA COLLEGIATE SANS CONDENSED

ABCDEFGHIJKLMNOPQRSTUVWXYZ
0123456789

UA COLLEGIATE SERIF

ABCDEFGHIJKLMNOPQRSTUVWXYZ
0123456789

UA COLLEGIATE SERIF CONDENSED

ABCDEFGHIJKLMNOPQRSTUVWXYZ
0123456789

MODERN

ABCDEFGHIJKLMNOPQRSTUVWXYZ
0123456789

ATHLETIC SCRIPT

ABCDEFGHIJKLMNOPQRSTUVWXYZ
abcdefghijklmnopqrstuvwxyz

SWINGMAN

ABCDEFGHIJKLMNOPQRSTUVWXYZ
abcdefghijklmnopqrstuvwxyz

NOTE:

- Gameday Select Package Pricing now includes all of the above listed fonts
- Dropped fonts available for fill-in orders only

LETTERING ARRANGEMENTS

STRAIGHT

TEAMNAME

BRIDGED

TEAMNAME

ARCH

TEAMNAME





















VERTICAL ARCH

TEAMNAME

SCRIPT WITH TAIL

Teamname

GAMEDAY OPTIONS

3/16" 1-COLOR PIPE					1/2" 3-COLOR BRAID			INCLUDED PIPE/BRAID	OPTIONAL PANT ALTERATIONS	LIST PRICE
					1 2 3	ANY COMBO OF PIPE COLORS	1. Jersey Front	Reduce Knicker Inseam 2" and Hem w/ Elastic	\$0.00	
							Around Neck	Increase Knicker Inseam 2" and Hem w/ Elastic	\$0.00	
							Around Placket	Increase Knicker Inseam 4" and Hem w/ Elastic*	\$15.00	
							None	Reduce Relaxed/Tapered Inseam 2" and Hem	\$0.00	
WHITE	BASEBALL GRAY	BLACK	MIDNIGHT NAVY	UNIVERSITY RED			2. Jersey Sleeves	Increase Relaxed/Tapered Inseam 2" and Hem	\$0.00	
ROYAL	FOREST GREEN	MAROON	PURPLE	DARK ORANGE			Sleeve Ends	Increase Relaxed/Tapered Inseam 4" and Hem*	\$15.00	
CAMPUS GOLD	TEAM KELLY GREEN	CARDINAL	TEAM VEGAS GOLD	CAROLINA BLUE			OR			
CLEVELAND BROWN	TEAL	TEXAS ORANGE	SILVER GRAY	GRAPHITE			None			
							3. Pants			
							Down Side			
							OR			
							None			

OPTIONAL ARMOURFUSE® TWILL (L X H)		LIST PRICE
Custom Font Team Name (Max. 14" x 4.25")		\$10.00
Custom Left Chest Team Logo (Max. 4" x 5")		\$15.00
Custom Sleeve Patch (Max. 4" x 4")		\$15.00
Custom Back Neck Patch (Max. 3" x 2")		\$15.00
Player Name (On Nameplate)		\$40.00
Player Name Directly on Jersey (No Nameplate)		\$30.00
Blank Nameplate		\$7.00
Add Tail to Script Font Team Name		\$20.00
Add Text to Script Font Tail		\$20.00

Note: Vector art must be provided for custom Armourfuse® Twill or additional artwork charges will apply

*Available on Men's styles only








STOCK OPTIONS







3/16" 1-COLOR PIPE	LIST PRICE
Around Placket (UBJ316P)	\$17.00
Sleeve Ends (UBJ316S)	\$17.00
Down Side (UBP316D)	\$17.00

1/2" 3-COLOR BRAID	LIST PRICE
Around Placket (UBJ12AP)	\$17.00
Around Neck (UBJ12NB)	\$17.00
Sleeve Ends (UBJ12SE)	\$17.00
Down Sides (UBP12DS)	\$17.00

NOTE: Additional leadtime should be expected for orders including piping, braiding and/or hemming. Please contact a UA Sale Rep for updates.

PIPE & BRAID AVAILABLE COLORS

Pipe 3/16"						
	WHITE	BLACK	MIDNIGHT NAVY	UNIVERSITY RED	ROYAL	FOREST GREEN
						
	MAROON	PURPLE	DARK ORANGE	CARDINAL	TEAM VEGAS GOLD	

Braid 1/2"				
	BK/WH/BK	NA/WH/NA	SC/WH/SC	RO/WH/RO
				
	DG/WH/DG	MA/WH/MA	PU/WH/PY	OR/WH/OR
				
	CA/WH/CA	VG/WH/VG		

ADDITIONAL LENGTH OPTIONS (ARMOURFUSE ONLY - \$10 FOR ALL -/+ OPTIONS)

BASEBALL/SOFTBALL

TYPE	ADJUSTMENT	CODE
JERSEYS	Add 2" body length	UJX2BDY
	Add 4" body length	UJX4BDY
PANTS	Subtract 2" from inseam	UJSHTN2
	Add 2" to inseam length	UJX2INS
	Add 4" to inseam length	UJX4INS

FOOTBALL

TYPE	ADJUSTMENT	CODE
JERSEYS	Shorten to waist length	
PANTS	Add 2" to inseam length	UJX2INS

LACROSSE/ FIELD HOCKEY

TYPE	ADJUSTMENT	CODE
JERSEYS	Add 2" body length	UJX2BDY
SHORTS	Subtract 1" from inseam	UJSHTN1
	Subtract 2" from inseam	UJSHTN2
	Add 1" to inseam length	UJX1INS
	Add 2" to inseam length	UJX2INS
KILTS	Add 1" to inseam length	UJX1INS
	Add 2" to inseam length	UJX2INS

BASKETBALL

TYPE	ADJUSTMENT	CODE
JERSEYS	Add 2" body length	UJX2BDY
	Add 4" body length	UJX4BDY
	Add 6" body length	UJX6BDY
SHORTS	Subtract 1" from inseam	UJSHTN1
	Add 1" to inseam length	UJX1INS
	Add 2" to inseam length	UJX2INS
	Add 3" to inseam length	UJX3INS
SHOOTING SHIRTS	Add 2" body, 1" sleeve	UJX2B1S
	Add 4" body, 2" sleeve	UJX4B2S
	Add 6" body, 3" sleeve	UJX6B3S

SOCCER

TYPE	ADJUSTMENT	CODE
JERSEYS	Add 2" body length	UJX2BDY
SHORTS	Subtract 1" from inseam	UJSHTN1
	Subtract 2" from inseam	UJSHTN2
	Add 1" to inseam length	UJX1INS
	Add 2" to inseam length	UJX2INS

TRACK & FIELD

TYPE	ADJUSTMENT	CODE
JERSEYS	Add 2" body length	UJX2BDY
LOOSE SHORTS*	Subtract 1" from inseam Add 1" to inseam length	UJSHTN1 UJX1INS

*UJTS2M & UJTS2W ONLY

TRAINING

TYPE	ADJUSTMENT	CODE
JERSEYS	Add 2" body length	UJX2BDY
	Add 4" body length	UJX4BDY
	Add 6" body length	UJX6BDY
SHORTS	Subtract 1" from inseam	UJSHTN1
	Subtract 2" from inseam	UJSHTN2
	Add 1" to inseam length	UJX1INS
	Add 2" to inseam length	UJX2INS
	Add 3" to inseam length	UJX3INS

VOLLEYBALL

TYPE	ADJUSTMENT	CODE
JERSEYS	Add 2" body length	UJX2BDY
	Add 1" sleeve length	UJX1SL
SHORTS	Subtract 1" from inseam	UJSHTN1
	Subtract 2" from inseam	UJSHTN2

EMBROIDERY

MASCOTS (STOCK ONLY)	LIST PRICE
Mascot	\$11.00
Mascot with One Line	\$12.00
Mascot with Two Lines	\$13.00
American Flag	\$11.00
Small/Homeplate	\$6.00

DIGITIZING (STOCK AND ARMOURFUSE ONLY)	LIST PRICE
Stock Designs and Lettering	\$180.00
Custom Logos	Call for Quote

- Prices are based upon size of designs, not the number of colors. Prices are subject to change if design exceeds specifications.
- Dimensions are maximum space - unless specifically noted best judgement will be used.
- Letter styles are available horizontal or arched.
- No digitizing charge for team names.

- Flag size up to 2" by 3" (bigger area - call for quote)
- Minimum order charges apply for embroidery
- All designs require an additional digitizing charge, except:
 - 1) Digitized designs supplied on a disk
 - 2) Digitized design is a re-order of an existing design

STANDARD SLEEVE PRINT STRIPES

*OPTIONS - Code numbers listed below stripe patterns

*Stripes may be adjusted to fit smaller garments and not measure exactly as shown.

01: 1/2" STRIPE, 1/2" SPACE, 2" STRIPE, 1/2" SPACE, 1/2" STRIPE

02: 1/2" STRIPE, 1/2" SPACE, 2" STRIPE, 1/2" SPACE, 1/2" STRIPE

05: 3/4" STRIPE, 1/4" SPACE, 3/4" STRIPE, 1/4" SPACE, 3/4" STRIPE, 1/4" SPACE, 3/4" STRIPE, 1/4" SPACE, 3/4" STRIPE

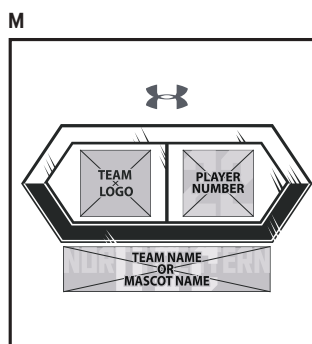
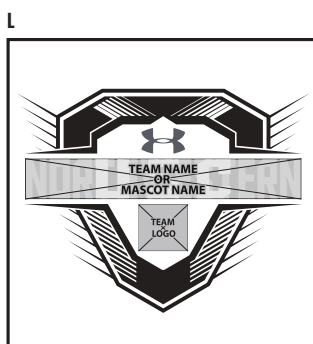
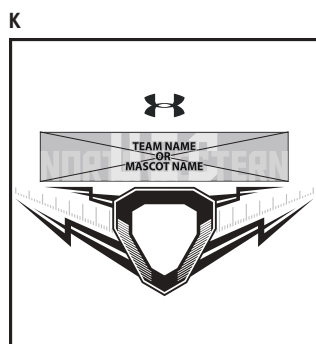
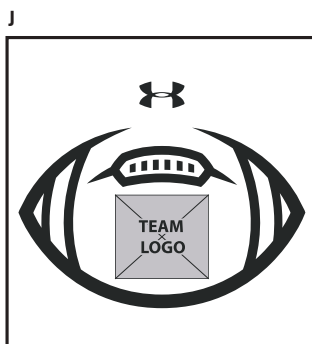
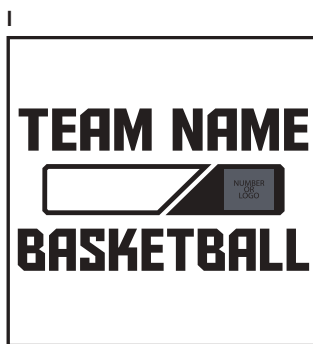
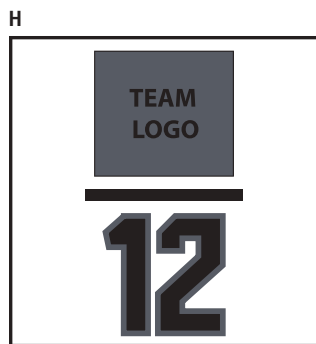
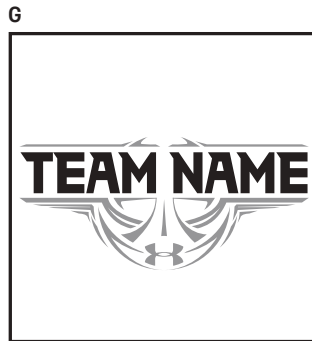
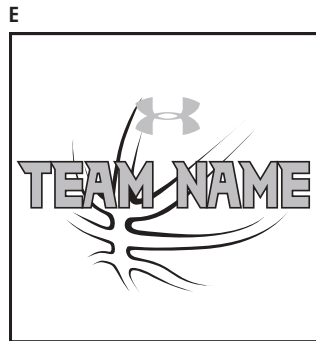
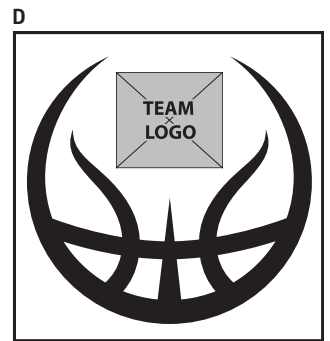
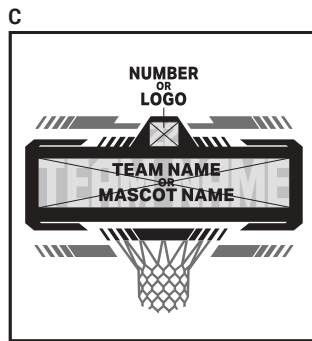
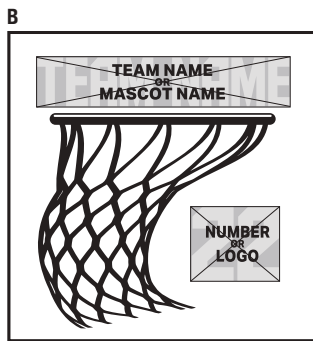
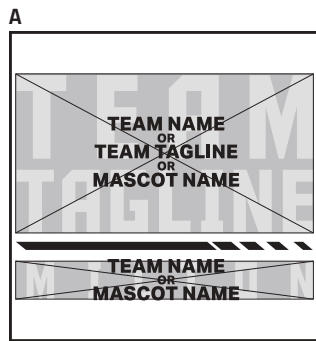
06: 2" STRIPE, 2" STRIPE

07: 1/4" STRIPE, 1" STRIPE, 1/4" STRIPE, 1" SPACE, 1/4" STRIPE, 1" STRIPE, 1/4" STRIPE, 1" SPACE

08: 1" STRIPE, 1" STRIPE, 1" SPACE, 1" STRIPE, 1" STRIPE

09: 1 1/2" STRIPE, 1 1/2" STRIPE, 1 1/2" STRIPE

ARMOURFUSE® GRAPHIC OPTIONS



UNIFORM CARE INSTRUCTIONS

To enhance the appearance and extend the life of your uniforms, Under Armour recommends that you follow these cleaning and storing procedures:

DO NOT DRY CLEAN

DO NOT WASH IN HOT WATER

DO NOT USE CHLORINE BLEACH

DO NOT USE FABRIC SOFTENER

DO NOT WASH WHITES AND COLORS TOGETHER

DO NOT OVERLOAD THE WASHING MACHINE

DO NOT MACHINE DRY ON HIGH HEAT

DO NOT LEAVE WET OR DAMP GARMENTS IN YOUR TRAVEL BAG, IN A PILE WITH OTHER CLOTHING OR IN WASHING MACHINE

- Pre wash uniform prior to use.
- Uniforms should always be laundered immediately after wearing. However, if this is not possible, rinse garments and hang individually on rust-proof hangers. (Moisture may cause color migration of acid dyes so we advise separating wet or damp uniforms.)
- Belts and any other contrasting color items should be washed separately from the garment.
- It is always advisable to test wash a single uniform according to directions before washing an entire load.
- Wash and rinse all garments in warm water (approx. 110°) with mild detergent. Remove promptly after wash cycle.
- For optimum results, hang garments (especially those with elastane) to dry. If you cannot hang dry, machine dry on the lowest setting. Turn jerseys inside out before machine drying. Remove items from dryer immediately upon completion of the cycle. (Excessive heat can cause fabric shrinkage, discoloration, and cracking and peeling of vinyl plastisol lettering inks.)
- Make sure uniforms are completely dry before storing. Store in a dry area to prevent mildew. Protect them from sunlight and fluorescent light to prevent yellowing.

PLEASE NOTE: Under Armour will not be responsible for uniforms that are damaged due to improper care and maintenance. Failure to follow our specified care instructions will void all guarantees.

UNIFORM FILL-IN LIFECYCLE

LAST SHOWN IN CATALOG	LAST FILL-IN SEASON	LAST FILL-IN SHIP
WI'21	WI'24	3/15/2025
SP'22	SP'25	6/15/2025
FA'22	FA'25	12/15/2025
WI'22	WI'25	3/15/2026
SP'23	SP'26	6/15/2026
FA'23	FA'26	12/15/2026
W'23	W'26	3/15/2027
SP'24	SP'27	6/15/2027
FA'24	FA'27	12/15/2027
WI'24	WI'27	3/15/2028
SP'25	SP'28	6/15/2028
FA'25	FA'28	12/15/2028

G **GAMEDAY TEAM UNIFORMS**
ORDERING INFORMATION AND CUSTOMER SERVICE:
1-800-474-6118
www.uacustomuniforms.com

AF **ARMOURFUSE™ TEAM UNIFORMS**
ORDERING INFORMATION AND CUSTOMER SERVICE:
1-888-871-0990
www.underarmourteamuniforms.com

S **STOCK TEAM UNIFORMS**
ORDERING INFORMATION AND CUSTOMER SERVICE:
1-888-871-0990
www.underarmourteamuniforms.com

ORDERING INFORMATION

Guarantee:

The materials and workmanship of our garments are guaranteed when given fair treatment and used under normal conditions.

Color Matching:

Scientifically, it is not possible to achieve a perfect color match from one dye lot to another. Therefore, we cannot guarantee a perfect match from order to order or from one fabric to another.

Color Abbreviation Key:

The following abbreviations may be used when ordering merchandise.

BG Baseball Gray	EB Electric Blue	PI Pink	SI Silver Grey
BK Black	GP Graphite	PK Powderkeg Blue	TI Taxi
BR Brown	KE Team Kelly Green	PO Poison	TE Teal
CA Cardinal	LG Steeltown Gold	PU Purple	TO Texas Orange
CB Carolina Blue	MA Maroon	RO Royal	TP Tropic Pink
CP Capri	NA Midnight Navy	RU Gold Rush	VG Team Vegas Gold
DG Forest Green	OR Dark Orange	SC University Red	WH White

Price Policy:

All catalog prices are list or suggested retail. Prices are subject to change without notice. Merchandise will be invoiced based on the prices in effect at the time the order is placed.

Terms:

Prices are FOB shipping point. Payment is due Net 30.

Minimum Order Charges:

A handling charge of \$10.00 will be added to orders of less than \$150.00 list. Custom and GamedaySelect fill-in minimum order is 6 units per style and color. A 100% surcharge will be applied to orders of 1-2 units, and a 50% surcharge for orders of 3-5 units.

Lettered Orders for COD Shipment:

A 50% deposit is required on all lettered orders calling for COD shipment.

Delivery:

Shipments will always be made by the fastest, least expensive means possible. The customer will assume any additional expense required to expedite delivery.

Order Cancellations:

Cancellations must be received at least one day prior to the ship date. Special order garments cannot be cancelled after they have been cut. Lettered garments cannot be cancelled after they have been printed or sewn.

Returns:

Claims must be reported to our office within 10 working days of merchandise receipt. Returns cannot be made after 30 days of the invoice date. All returns for plain merchandise must be clearly marked with an authorization number or label obtained from our office. All returns for lettered merchandise must be clearly marked "LETTERING." When requesting an authorization label, the following information is required: Reason for return, Invoice #, Style #, Color, Size/Quantity. An authorization label will then be sent to you to prepare the merchandise for return shipment. We reserve the right to repair, replace or issue credit for any merchandise returned. A 15% restocking fee and shipping charges will be charged for merchandise returned that is either not damaged or the damage is determined not to be our fault. All worn garments must be properly laundered prior to return or they will not be accepted.

All custom and custom-stock uniforms may not be returned under any circumstances if delivered properly.

Shortages:

All claims must be made within 10 days of the invoice date.

New Accounts:

All new accounts must be opened through your local sales representative. New accounts that do not have a Dunn and Bradstreet rating will be shipped COD until a credit line has been established.

Samples:

Samples will be entered and billed as a regular order. Samples cannot be returned without prior approval from our office.

Imprint Orders:

All imprint orders must be emailed, mailed or faxed in with detailed instructions on UA order forms. Imprint orders will not be taken by phone. Once garments have been lettered, the order cannot be cancelled or returned.

Under Armour will not be responsible for any items not checked for order accuracy or sizing before being sent to a printer / screener. We will not be responsible for shrinkage, defects, or damages caused during the imprinting of our garments by sources other than our own lettering department. Screenprinting sublimated uniforms can cause color migration. We do not recommend screenprinting on sublimated garments.

Photography is the property of Under Armour and is not to be used without written authorization.

NOTES:

Lined area for notes with horizontal ruling lines.

MEN'S

COMPRESSION



Ultra-tight, second skin fit that keeps you locked in & makes you feel like you can do anything.

FITTED



A slimmer, athletic cut that allows total mobility but eliminates the bulk of extra fabric.

LOOSE



Fuller cut for complete comfort, total range of motion & greater breathability.

	US SIZE	CHEST (IN)	WAIST (IN)	HIP (IN)
SM	26-28	34-37	29-31	34-36
MD	30-32	37-41	31-34	36-39
LG	34-36	41-44	34-37	39-42
XL	38-40	44-48	37-41	42-46
2XL	42-44	48-52	41-45.5	46-50
3XL	46-48	52-56	45.5-50	50-54
4XL	50-52	56-60	50-54.5	54-58
5XL	54-56	60-64	54.5-59	58-62

HOW TO MEASURE



CHEST: Place the tape measure under your arms at the fullest part of your chest, wrap around your body until your fingers meet and mark the measurement

WAIST: Measure around your natural waistline – right above your hips. Be careful not to squeeze too tight to allow a little give.

HIPS: With your feet together, measure around the fullest part of your hips to ensure you'll have enough room to move comfortably.

BOYS

FITTED



A slimmer, athletic cut that allows total mobility but eliminates the bulk of extra fabric.

LOOSE



Fuller cut for complete comfort, total range of motion & greater breathability.

	US SIZE	CHEST (IN)	WAIST (IN)	HIP (IN)
YXS	7	25-26	23-24	26-27
YSM	8	26-27	24-25	27-28
YMD	10-12	27-29	25-27	28-31
YLG	14-16	29-32.5	27-30	31-34
YXL	18-20	32.5-35.5	30-33	34-37

HOW TO MEASURE



CHEST: Place the tape measure under your arms at the fullest part of your chest, wrap around your body until your fingers meet and mark the measurement

WAIST: Measure around your natural waistline – right above your hips. Be careful not to squeeze too tight to allow a little give.

HIPS: With your feet together, measure around the fullest part of your hips to ensure you'll have enough room to move comfortably.

WOMEN'S

COMPRESSION



Ultra-tight, second skin fit that keeps you locked in & makes you feel like you can do anything.

FITTED



Sits close to the skin for a streamlined fit without the squeeze of compression.

LOOSE



Fuller, more generous cut for enhanced range of motion & an effortlessly relaxed fit.

	US SIZE	CHEST (IN)	WAIST (IN)	HIP (IN)
XS	0-2	32.5-33.5	25.5-27	34.5-36
S	4-6	33.5-36	27-29	36-38
M	8-10	36-38	29-31	38-40
L	12-14	38-41	31-34	40-43
XL	16	41-44	34-37	43-46
2XL	18	44-47	37-40	46-49
3XL	20	47-50	40-43	49-52
4XL	22	50-53	43-46	52-55

HOW TO MEASURE



CHEST: Place the tape measure under your arms at the fullest part of your chest, wrap around your body until your fingers meet and mark the measurement

WAIST: Measure around your natural waistline – right above your hips. Be careful not to squeeze too tight to allow a little give.

HIPS: With your feet together, measure around the fullest part of your hips to ensure you'll have enough room to move comfortably.

GIRLS

FITTED



Sits close to the skin for a streamlined fit without the squeeze of compression.

LOOSE



Fuller, more generous cut for enhanced range of motion & an effortlessly relaxed fit.

	US SIZE	CHEST (IN)	WAIST (IN)	HIP (IN)
YXS	7	25-26.5	23-24	26-28
YSM	8	26.5-27.5	24-24.5	28-29
YMD	10-12	27.5-30.5	24.5-26.5	29-32.5
YLG	14-16	30.5-34	26.5-30.5	32.5-36.5
YXL	18-20	34-36	30.5-32.5	36.5-38.5

HOW TO MEASURE



CHEST: Place the tape measure under your arms at the fullest part of your chest, wrap around your body until your fingers meet and mark the measurement

WAIST: Measure around your natural waistline – right above your hips. Be careful not to squeeze too tight to allow a little give.

HIPS: With your feet together, measure around the fullest part of your hips to ensure you'll have enough room to move comfortably.

WEST

GREG ROMINE
719.238.9244
gromine@underarmour.com
WA // OR // CA // NV //
AZ // UT // AK // HI

HAYLEY GILLMORE
303.562.6053
hgillmore@underarmour.com
East & North TX // OK // CO //
WY // ID // MT

FRANK WEBER
618.540.3955
fweber@underarmour.com
IL // MO // IA // MN //
NE // KS // ND // SD

BLAKE KUENZI
405.488.4942
blake.kuenzi@underarmour.com
NM // Central, South & West Texas

EAST

MONTE GIBBS
662.801.3039
mgibbs@underarmour.com
TN // LA // AL //
MS // AR // KY

DAN WILLIAMS
352.672.1676
dwilliams@underarmour.com
NC // SC // GA // FL

TONY DONOFRIO
NATIONAL SALES MANAGER
419.356.9742
tonyd@underarmour.com
WI // MI // IN // OH

GARY POWERS
410.746.3790
gpowers@underarmour.com
MD // DC // VA // WV //
Eastern PA

BOB BARTLETT
315.380.6505
bobb@underarmour.com
NY // Western PA

JAY KELLEHER
443.615.0462
jkelleher@underarmour.com
New England // NJ

COLLEGIATE

TOMMY AMICO
951.808.0367
tamico@underarmour.com
WEST

TODD LOCKLEAR
410.454.6572
tlocklear@underarmour.com
EAST

CHRIS PORTS
443.220.1009
cports@underarmour.com
MID ATLANTIC

BELLA GARONE
631.307.0009
isabella.garone@underarmour.com
NORTHEAST

ALEX BRUEGGEMANN
410.652.4337
abrueggemann@underarmour.com
SOUTH

LICENSEES

FOUNDER SPORT GROUP
Stock & Armourfuse Uniforms
www.underarmourteamuniforms.com
888.871.0990
UAStatus@foundersportgroup.com

POWERS ATHLETIC
Custom Uniforms
www.uacustomuniforms.com
800.474.6118
customerservice@powersathletic.com

THE GAME
Custom Headwear
www.uateamheadwear.com
800.723.5656
customerservice@2thegame.com

USB
McDavid & Shock Doctor
Water Bottles
657.383.4438
UA@unitedspb.com

SAFILO
Eyewear
uateamsportsorders@safilo.com



TEL: 1.888.828.1547 / B2B: ARMOURHOUSE.UNDERARMOUR.COM

COLLEGIATE

TEAMSPTS COLLEGIATE / TEAMSPTS.COLLEGIATE@UNDERARMOUR.COM

EAST

TEAM SPORTS SE / TEAMSPTSSE@UNDERARMOUR.COM
TEAM SPORTS NE / TEAMSPTSNE@UNDERARMOUR.COM

WEST

TEAM SPORTS WC / TEAMSPTSWC@UNDERARMOUR.COM
TEAM SPORTS SW / TEAMSPTS@UNDERARMOUR.COM

ALL TEAM SPORTS ORDERS AND QUESTIONS PLEASE USE THE FOLLOWING:

1.888.828.1547
Corporate Headquarters
1020 Hull Street
Baltimore, MD 21230

CORPORATE OFFICE HOURS OF OPERATION

Monday through Friday, 8:30am – 5:30pm, EST.

UNDER ARMOUR® B2B – ONLINE ORDERING

armourhouse.underarmour.com

- 24/7 access to check inventory and place orders
- Ability to track orders and shipments
- Priority product allocation
- Faster processing time

UNDER ARMOUR® B2B – SUPPORT

B2B_support@underarmour.com

UNDER ARMOUR® RETURN POLICY

Under Armour® stands behind its gear and EXPECTS nothing less than perfection. If you have received a defective product, an incorrect size, or an incorrect order, please contact us immediately for a return authorization number so that we can quickly process your return and ensure your satisfaction.

ALL RETURNS MUST BE COMPLETED WITHIN 30 DAYS OF RECEIPT AND MUST BE IN REASONABLE CONDITION. ALL RETURNS MUST HAVE THE RA# CLEARLY MARKED ON THE CARTON. ALL RETURNS ARE SUBJECT TO A 15% RE-STOCKING FEE.

Should you need to return or exchange an item, you MUST include your RA#, a copy of your invoice, and an explanation in writing as to why you are returning the item. Send your return to the marked address on your pack list. If you are exchanging merchandise, you are responsible for the cost of returning the product. Original shipping costs are non-refundable. All returned merchandise must be received in new, resalable condition.

ODH RETURNS:

Under Armour Returns
RA#
7030 Tradepoint Ave
Dock Door 69
Sparrows Point, MD 21219

RIALTO RETURNS:

Under Armour Returns
RA#
2510 W Walnut Ave
Rialto, CA 92376

NASHVILLE RETURNS:

Under Armour Returns
RA#
13 Athlete's Way
Mt Juliet, TN 37122

UNDER ARMOUR® CANCELLATION POLICY

Any request for cancellation of an order for UA products must be made, in writing, through the customer's UA Sales Representative. A request to cancel an order must be made more than 30 days before the customer's original desired ship date. All cancellations are subject to UA approval.

ALL PRICES SET FORTH HEREIN ARE SUBJECT TO CHANGE WITHOUT NOTICE.

© 2024 Under Armour®. All rights reserved. All trademarks, images, photographs, logos, and graphics are owned or controlled by Under Armour®.

Confidential and business proprietary information for internal Under Armour®, Inc. use only. Reproduction is strictly prohibited.

UNDER ARMOUR® PERFORMANCE
FALL 2025