

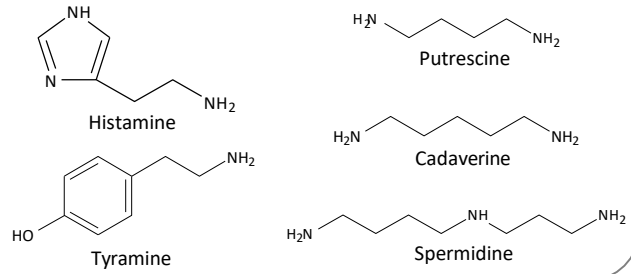
# Analysis of Putrefactive Non-Volatile Amines in Food by Pre-column HPLC

This note describes a determination method for non-volatile putrefactive amines in food using pre-column derivatization.

Putrefactive amines in food are produced by microorganisms. Many of the biogenic amines are known to be responsible for food-poisoning. To determine these amines, HPLC systems coupled with pre-column or post-column derivatization methods are frequently used.

Based on the inspection guideline by Japan Food Hygiene Association, pre-column derivatization method using DNS-Cl (5-dimethylaminonaphthalene-1-sulfonyl chloride) was adopted in this note. The putrefactive amines were successfully fluorescently derivatized, and the calibration curves showed excellent linearity. (K.Suzuki)

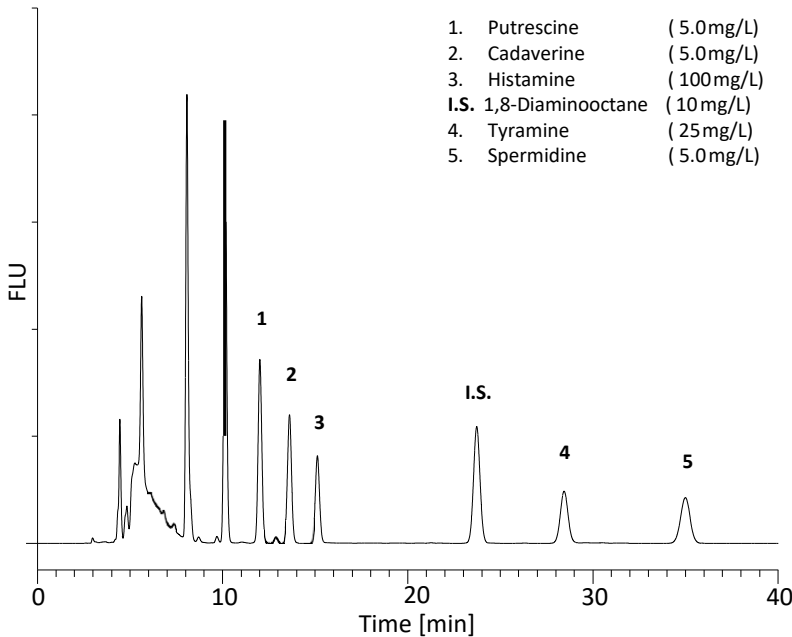
## Chemical Structures



Structures are created using Chemistry 4-D Draw which is provided by ChemInnovation Software, Inc.

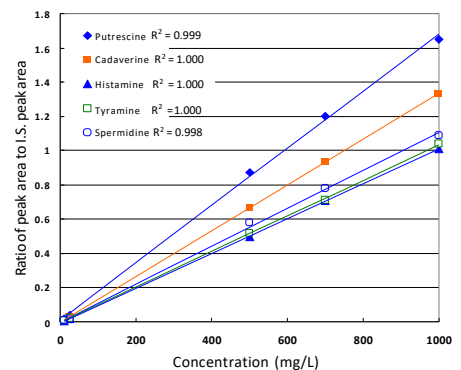
## A Chromatogram Obtained from Standard Solution

Standard solution derivatized by DNS-Cl was analyzed.



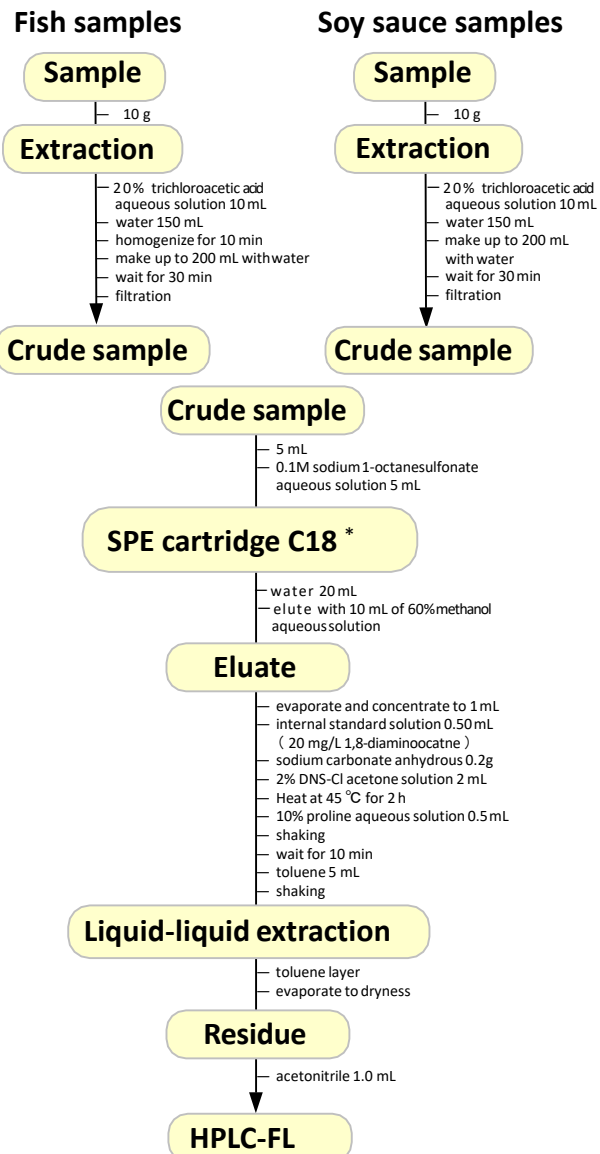
### Conditions

<b>Column</b>	Inertsil ODS-SP (5 $\mu$ m, 250 x 4.6 mm I.D.) Cat.No. 5020-02746
<b>Guard column</b>	Cartridge Guard Column E ODS-SP (5 $\mu$ m, 10 x 4.0 mm I.D.) Cat.No. 5020-08520
<b>Eluent</b>	A) CH <sub>3</sub> CN    B) H <sub>2</sub> O A/B= 65/35, v/v, 1.0 mL/min
<b>Column Temp.</b>	40 °C
<b>Detection</b>	FL Ex 325 nm, Em 525 nm
<b>Injection Vol.</b>	10 $\mu$ L

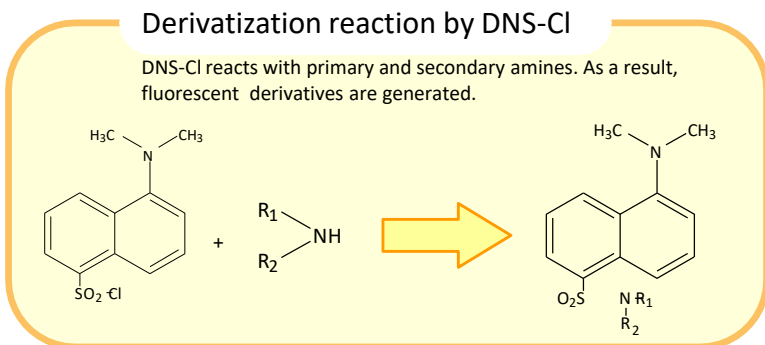
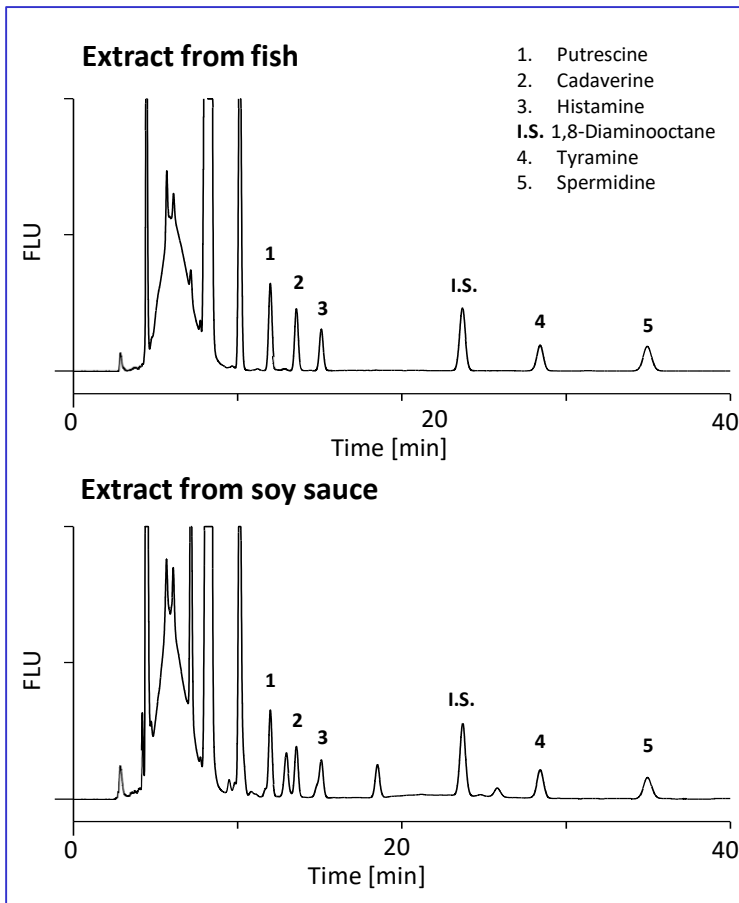


The calibration curves for the putrefactive amines

**Examples of Sample Pretreatment**



\* Before loading the sample on SPE cartridge, conditioning was carried out with 10 mL of methanol followed by 10 mL of water.



GL Sciences disclaims any and all responsibility for any injury or damage which may be caused by this data directly or indirectly. We reserve the right to amend this information or data at any time and without any prior announcement.

**GL Sciences, Inc. Japan**  
 22-1 Nishishinjuku 6-Chome  
 Shinjuku-ku, Tokyo,  
 163-1130, Japan  
 Phone: +81-3-5323-6620  
 Fax: +81-3-5323-6621  
 Email: [world@glsc.co.jp](mailto:world@glsc.co.jp)  
 Web: [www.glsciences.com](http://www.glsciences.com)

**GL Sciences B.V.**  
 De Sleutel 9  
 5652 AS Eindhoven  
 The Netherlands  
 Phone: +31 (0)40 254 95 31  
 Email: [info@glsciences.eu](mailto:info@glsciences.eu)  
 Web: [www.glsciences.eu](http://www.glsciences.eu)

**GL Sciences (ShangHai) Ltd.**  
 Tower B, Room 2003,  
 Far East International Plaza,  
 NO,317 Xianxia Road,  
 Changning District.  
 Shanghai, China P.C. 200032  
 Phone: +86 (0)21-6278-2272  
 Email: [contact@glsciences.com.cn](mailto:contact@glsciences.com.cn)  
 Web: [www.glsciences.com.cn](http://www.glsciences.com.cn)

**GL Sciences, Inc. USA**  
 4733 Torrance Blvd. Suite 255  
 Torrance, CA 90503  
 Phone: 310-265-4424  
 Fax: 310-265-4425  
 Email: [info@glsciencesinc.com](mailto:info@glsciencesinc.com)  
 Web: [www.glsciencesinc.com](http://www.glsciencesinc.com)

**International Distributors**  
 Visit our Website at:  
<https://www.glsciences.com/company/distributor.html>

