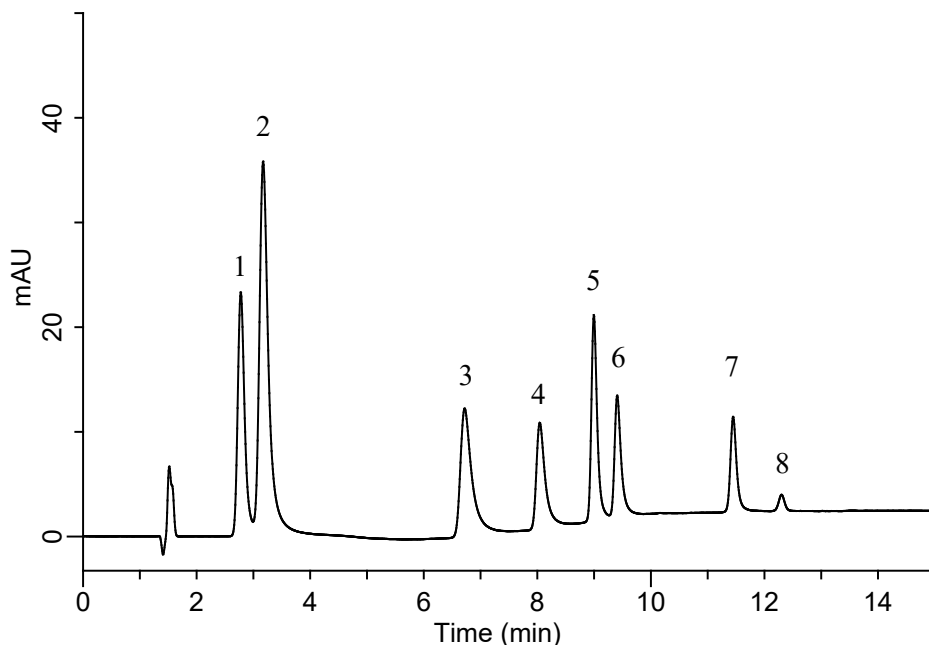


InertSearch for LC

Inertsil Applications

Analysis of Nitrosamines

Data No. LB690 - 1054



Conditions

System : Primaide HPLC system
Column : InertSustain PFP HP
(3 μ m, 100 x 4.6 mm I.D.)
Column Cat. No. : 5020-87932
Eluent : A) CH₃OH
B) H₂O

Time (min)	A (vol%)	B (vol%)
0.0	10	90
1.5	10	90
7.0	55	45
17.0	55	45
17.1	90	10
21.0	90	10
21.1	10	90
25.0	10	90

Analyte:

1. N-Nitrosodimethylamine (NDMA)
2. N-Nitrosomorpholine (NMOR)
3. N-Nitrosodiethylamine (NDEA)
4. N-Nitrosoethylisopropylamine (NEIPA)
5. N-Nitrosodiisopropylamine (NDIPA)
6. N-Nitrosodi-n-propylamine (NDPA)
7. N-Nitrosodi-n-butylamine (NDBA)
8. N-Nitrosodiphenylamine (NDPhA)

(each 5 mg/L in solvent)

Flow Rate : 1.0 mL/min
Col. Temp. : 40 °C
Detection : UV 240 nm (1430 Diode Array Detector)
Injection Vol. : 10 μ L
Sample : standard