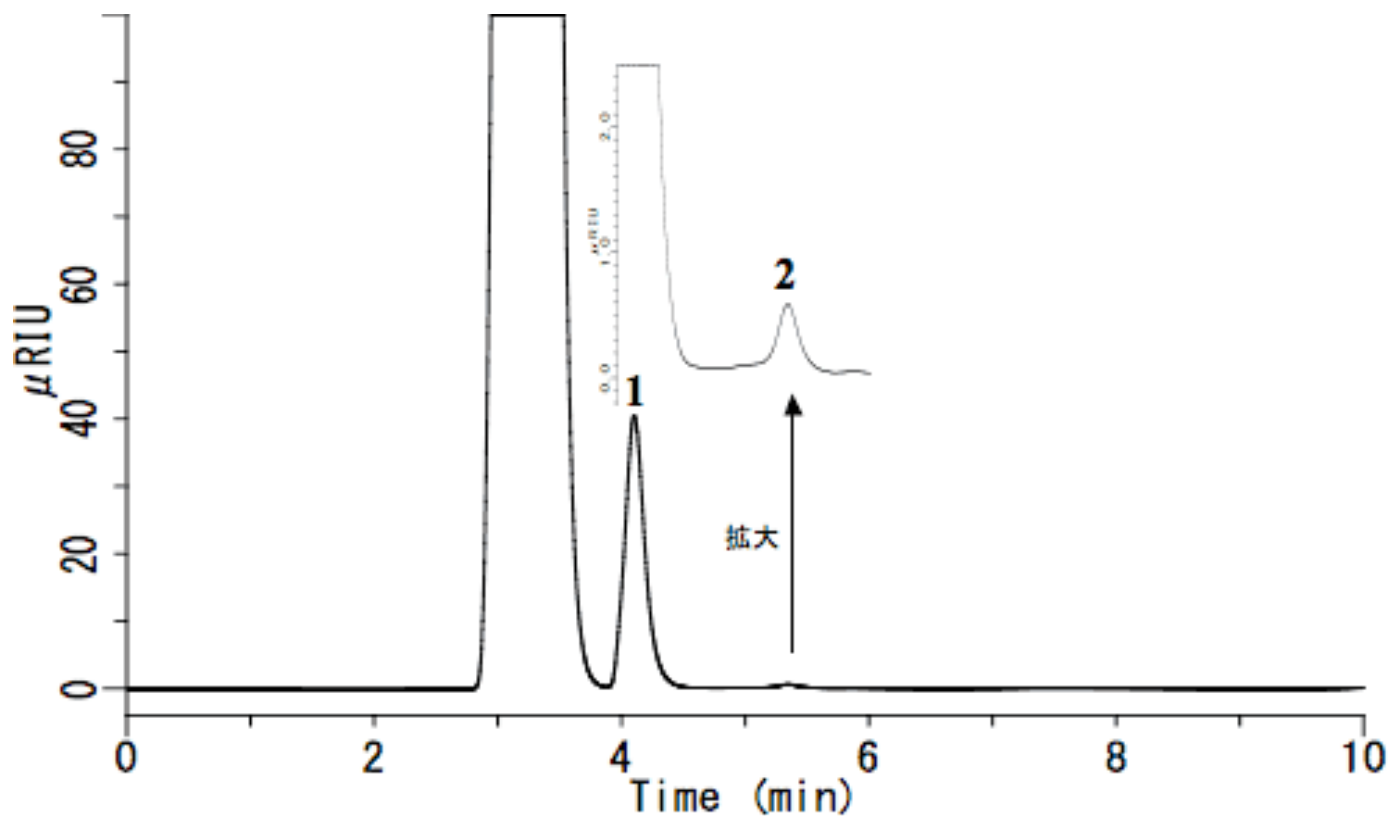


InertSearch™ for LC

Inertsil® Applications

Analysis of Biodiesel

Data No. LA584-0696



System :GL-7400 system

Solutes :1. Methyl Stearate (2000 mg/L)

Column :Inertsil SIL-100A (5 μm , 250 \times 4.6 mm I.D.)

2. Trilinolein(20 mg/L)

Column Cat. No.:

Eluent :A) n-Hexane

B) 2-Propanol

A/B = 996/4, v/v

Flow rate :1.0 mL/min

Col. Temp. :40 $^{\circ}\text{C}$

Detection :RI (GL-7454 RI detector)

Injection Vol. :10 μL

Sample :Methyl Stearate

Trilinolein