



ROX 
MINING PARTS



OPEN CUT MACHINE PARTS

2024 ROX Open Cut Machine Products

July 2024 Release

CAT | Hitachi | Komatsu | Epiroc



 www.bendtechgroup.com.au

BUILT BETTER 

A NEW ERA HAS ARRIVED



BRAND DNA

ROX Mining Parts is a division of the Bend-tech Group dedicated to the supply of Open cut and Underground machine replacement parts. ROX is committed to eliminating downtime, improving performance, and increasing longevity of parts through innovation. The ROX team has been restructured with customer experience in mind and with dedicated supporting departments such as research and development, engineering, and logistics, the ROX division is poised to transform mining parts supply.

ROX

A riff on the substrate mobile equipment mine (*Rocks*). Combined with the animal the Aurochs or Ox for its characteristics in defence, agility, and protection.

AUROCHS / OX

Representing the strengths of the division and the parts we supply the Aurochs is known as an agile, athletic, and strong animal capable of defending themselves against predators such as wolves.

BRAND STORY

We are excited to introduce our reimagined identity – a transformation born from our unwavering commitment to provide even greater value to our customers and a realisation that our provision of OEM replacement parts division has become much more than just a business unit. Our journey began with a simple idea, and today, that idea is evolving into a brand-new experience that reflects our dedication to innovation, quality, minimising downtime, and customer experience.

THE ORIGINS

Every great journey has its origins. What has become ROX today started in the late 2000's when we began supplying OEM replacement handrails for Underground machines. This quickly evolved into supplying more handrails, then more parts. Which then evolved into servicing the Open cut machine market, supplying components such as handrails, fenders and guards, platform modules and fuel tanks. Through the years, we've remained dedicated to serving our customers, adapting to their needs, and leveraging new technologies to improve their experience.

THE VISION

Our new identity is not just a logo or a name – it's a reflection and commitment of our vision for the future. We envision a world where all our customers' required parts are stocked, downtime is eliminated, parts are innovated and improved, and we are the relied upon supplier for mining equipment replacement parts. This vision is the driving force behind every decision we've made in shaping our rebrand.

THE PROMISE

Our promise to you remains unchanged. Just as we've stood by your side in the past, we will continue to be your trusted partner on this journey of sustained value and minimising downtime. Our commitment to all parts being stocked, downtime eliminated, innovated parts and improved performance, and becoming the relied upon supplier for mining equipment replacement part supply remains steadfast, serving as the bedrock of our rebrand and the road ahead.

THE EVOLUTION

As time passed, the division continued to grow both in parts and services provided as well as our human resources and supporting divisions such a research and development (R&D). We realised that providing what the industry needs and mitigating customer pain points meant embracing change. Our rebrand is the result of an evolution – a transformational process that has seen us listen to your feedback, learn from our experiences, and begin a journey towards continued innovation to create something even more exceptional.

THE BENEFITS

Our rebrand isn't just for us – it's for you. We've reimagined our service with you in mind, with the mission of creating an experience that is more streamlined, innovative, and dedicated than ever before. With our new identity, we're poised to elevate your experience and empower you like never before. With a restructured team, more robust R&D, and a new, dedicated website in the works we are poised to deliver the best service in the industry.

CONCLUSION

In closing, we're excited to embark on this new chapter with you. Our rebrand of our OEM Replacement Parts division is more than a new name, new colours, or new logo – it's a testament to our dedication to continuous improvement, innovation, and growth. Thank you for being a part of our story so far, and we look forward to the exciting journey ahead, hand in hand.



CONTENTS

CAT MACHINE PARTS

CAT D10T Dozer	5
CAT D11T Dozer	10
CAT 24M Grader	12
CAT 777 Haul Truck	14
CAT 785 Haul Truck	16
CAT 789 Haul Truck	17
CAT 793 Haul Truck	19
CAT 854K Wheel Dozer	24
CAT 994H Wheel Loader	26
Fuel Tank Refurbs/Rotables	28

HITACHI MACHINE PARTS

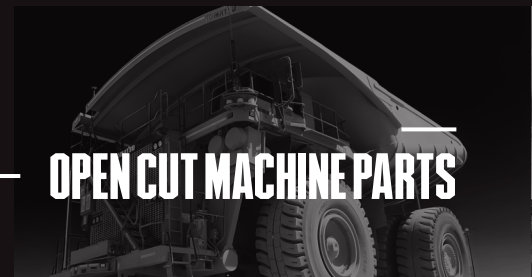
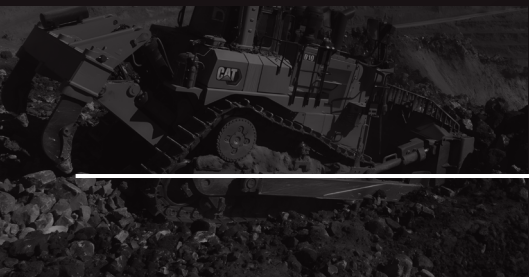
Hitachi EX1900 Excavator	31
Hitachi EX2500 Excavator	38
Hitachi EX3600 Excavator	41
Hitachi EX5600 Excavator	49
Hitachi EX8000 Excavator	57

EPIROC MACHINE PARTS

Epiroc D65 Surface Drill	62
--------------------------	----

KOMATSU MACHINE PARTS

Komatsu Machine Range	64
-----------------------	----



OPEN CUT MACHINE PARTS

CAT
D10T DOZER

ELIMINATING DOWNTIME, MAXIMISING EFFICIENCY.



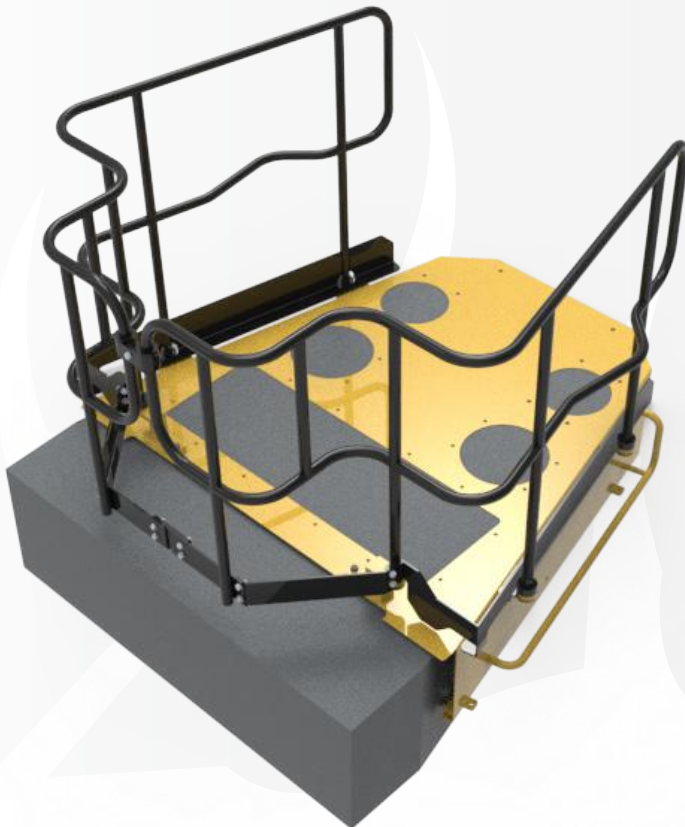
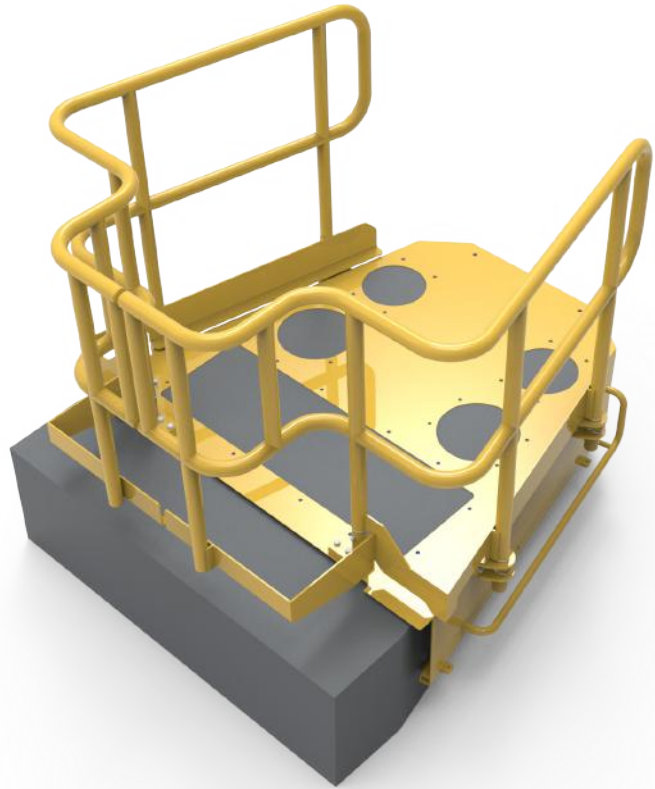
CAT D10T DROP-IN BONNET HANDRAIL

Part No. 5504947

A comprehensive set of handrails designed and engineered to provide fall protection on the bonnet of the Caterpillar D10T Dozer. Drop-in handrails for temporary maintenance.

Features:

- Heavy-duty, lightweight aluminium construction
- Suits D10T RJG, D10N 3SK/2YD, D10R 3KR
- Mounts sold separately for ease of fleet implementation (Mount Kit - Part No. 5600787)
- 2 piece design for ease of fitment



CAT D10T FIXED BONNET HANDRAILS

Part No. 5504835

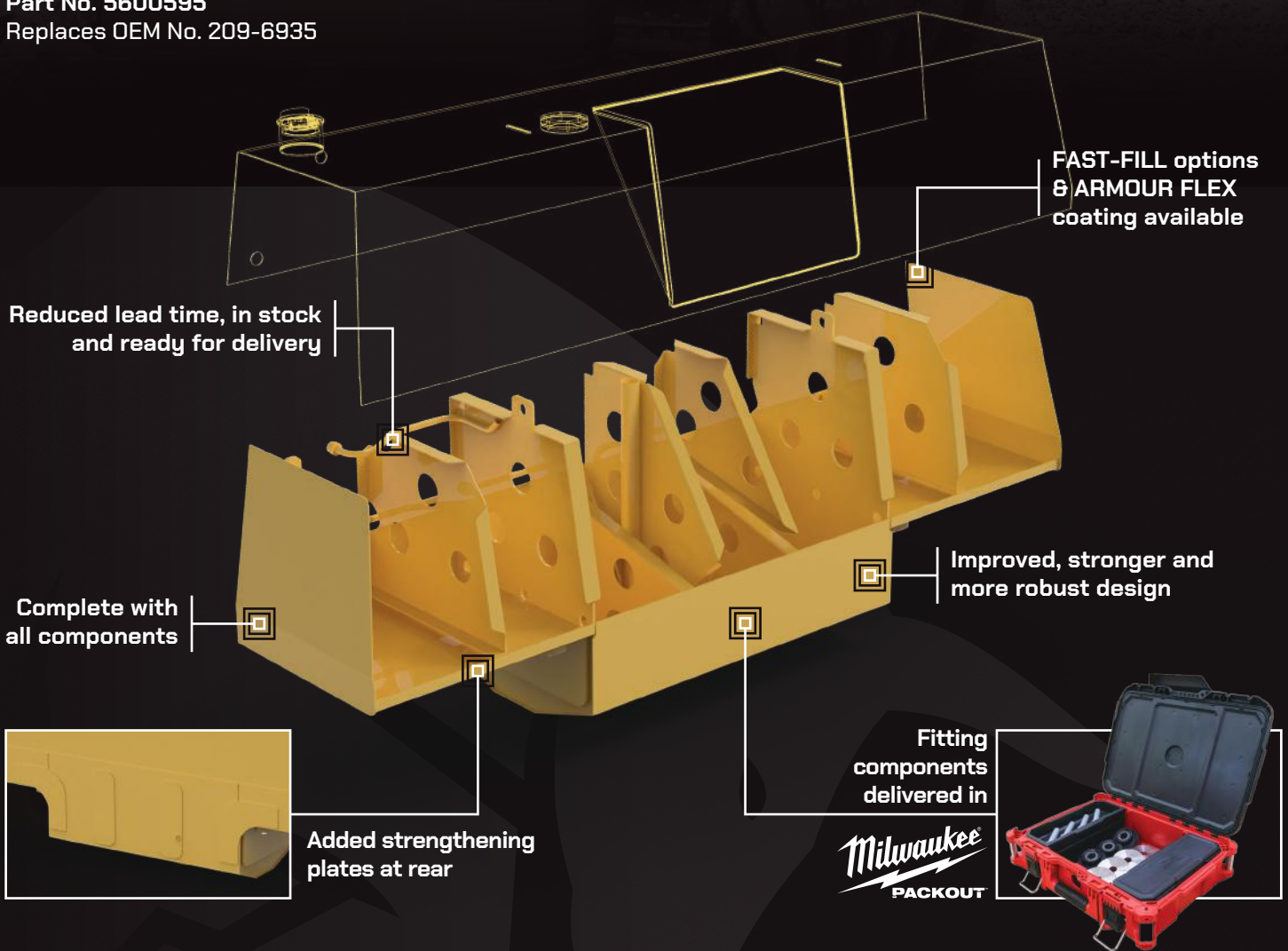
A comprehensive set of fixed handrails designed and engineered to provide fall protection on the bonnet of the Caterpillar D10T dozer.

Features:

- Suits D10T RJG, D10N 3SK/2YD, D10R 3KR
- Shock absorbing mounts
- Bolt-in handrails for a fixed maintenance solution
- Finished in Satin Black to reduce glare during operation

CAT D10T FUEL TANK

Part No. 5600595
Replaces OEM No. 209-6935




FAST-FILL options & ARMOUR FLEX coating available

Reduced lead time, in stock and ready for delivery

Complete with all components

Improved, stronger and more robust design

Added strengthening plates at rear

Fitting components delivered in  Milwaukee PACKOUT



✉ sales@bendtechgroup.com.au

🌐 bendtechgroup.com.au



PERTH
[08] 9459 8600

ADELAIDE
[08] 8231 1513

DARWIN
[08] 8963 5621

KALGOORLIE
[08] 9021 8300

NEWMAN
[08] 9175 1164

MOUNT ISA
[07] 4743 6458

CAT D10T BONNET / HOOD

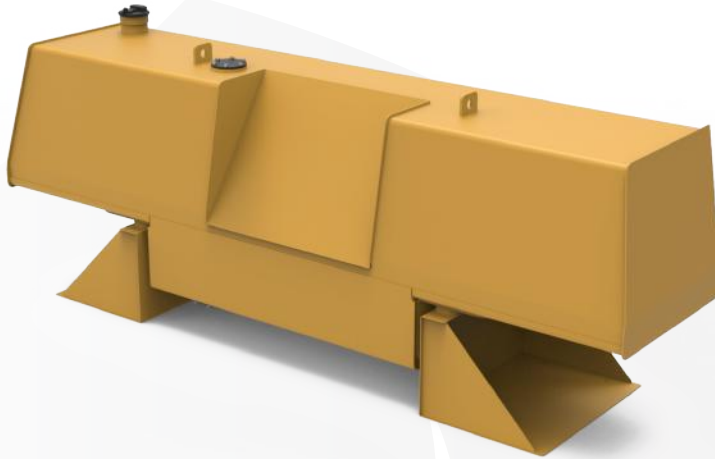
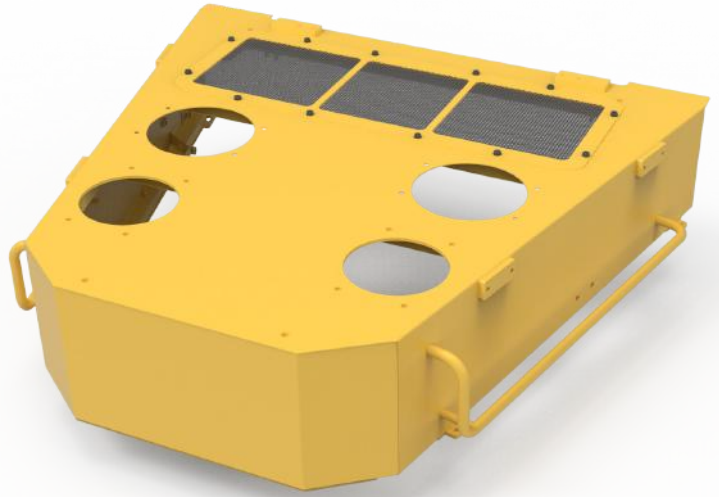
Part No. 5600597

Direct bolt-on replacement for the CAT D10 Bonnet/Hood complete with all components.

Replaces OEM No. 371-4122, 272-9665

Features:

- Suits D10T RJG, D10N 3SK/2YD, D10R 3KR
- Heavy-duty steel construction
- Comes pre-installed with welding bosses to suit ROX's D10T fixed & drop-in handrails



CAT D10T FUEL TANK

Part No. 5600595

A cost-effective replacement for the CAT D10T Fuel Tank complete with all components.

Replaces OEM No. 209-6935

Features:

- Heavy-duty steel construction
- Available for ROX Fuel Tank Refurb/Rotable [see page 28]

CAT D10T2 FUEL TANK

Part No. 5601243

ROX's CAT D10T2 fuel tank is a direct replacement for CAT OEM part 378-5564, 379-8601, 477-6755, 477-6756, 492-3520 and 492-3521. Complete with all components and designed to be stronger and more robust

Features:

- Heavy-duty steel construction
- Available for ROX Fuel Tank Refurb/Rotable [see page 28]



CAT D10T2 FIXED BONNET HANDRAILS

Part No. 5506668

A set of fixed handrails designed and engineered to provide fall protection on the bonnet of the D10T2.

Features:

- Heavy-duty steel construction
- Shock absorbing mounts
- 2 piece design for ease of fitment
- Finished in Satin Black to reduce glare during operation



CAT D10 / D11 TRACK HANDRAIL

Part No. 5501429

A set of handrails designed and engineered to provide fall protection.

Features:

- Heavy-duty, lightweight aluminium construction
- Tare weight per handrail: 72kg
- Includes LH & RH set
- All fixings included

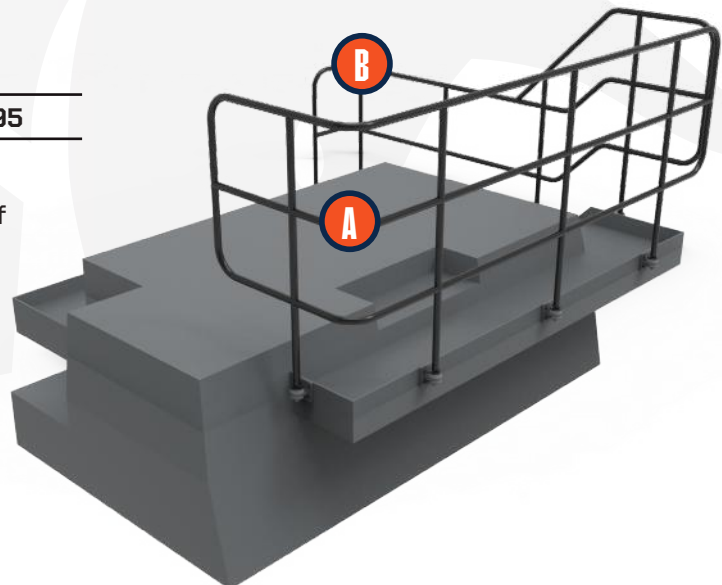
CAT D10T REAR HANDRAILS

Part No. Handrail A: 5600494, Handrail B: 5600495

A comprehensive set of handrails designed and engineered to provide fall protection on the rear of the Caterpillar D10T dozer.

Features:

- Heavy-duty steel construction
- Shock absorbing mounts
- Finished in Satin Black



CAT
D11T DOZER



ELIMINATING DOWNTIME, MAXIMISING EFFICIENCY.



CAT D11T DROP-IN BONNET HANDRAILS

Part No. 5506300

A comprehensive set of handrails designed and engineered to provide fall protection on the bonnet of the Caterpillar D11T Dozer. Drop-in handrails for temporary maintenance.

Features:

- Heavy-duty, lightweight aluminium handrails
- Heavy-duty steel drop-in mounts included
- 4 piece design for ease of fitment
- Suits GEB series only



CAT D11T FIXED BONNET HANDRAILS

Part No. 5505157

A comprehensive set of fixed handrails designed and engineered to provide fall protection on the bonnet of the Caterpillar D11T dozer.

Features:

- Heavy-duty steel construction
- Rubber mounts and joins
- Access gate
- 2 piece design for ease of fitment
- Suits GEB series only
- Finished in Satin Black to reduce glare during operation

CAT D11T CHASSIS HANDRAILS

Part No. 5502252

A removable handrail to be fitted to the D11T chassis, designed and engineered to provide fall protection during maintenance

Features:

- Lightweight aluminium construction
- Powder coated in Y-14 Safety Yellow
- Beam Clamps
- 1800mm high, 2730mm wide [total]



CAT
24M GRADER



ELIMINATING DOWNTIME, MAXIMISING EFFICIENCY.



CAT 24M EMERGENCY ACCESS LADDER

Part No. 5502411

Our CAT 24M Emergency Access ladder is designed for emergency situations. Allows operators to escape quickly in case of a fire or other emergency. Certified and compliant with Australian Standards.

Features:

- Gas struts for controlled release and easy lifting
- Heavy-duty steel and aluminum
- Working Load Limit of 150kg
- Easy-to-use latching system
- Mounts to LHS of cab
- Non-slip nosing's on ladder treads



CAT 24M COVER PLATE RIGHT

Part No. 5502412

A side cover plate to suit the right hand side of a CAT 24M, designed to protect hydraulic hoses and electrical wiring on the front chassis frame.

Replaces OEM No. **316-2323**

Features:

- Heavy-duty steel construction
- Stocked and ready for despatch



CAT 24 COVER PLATE LEFT

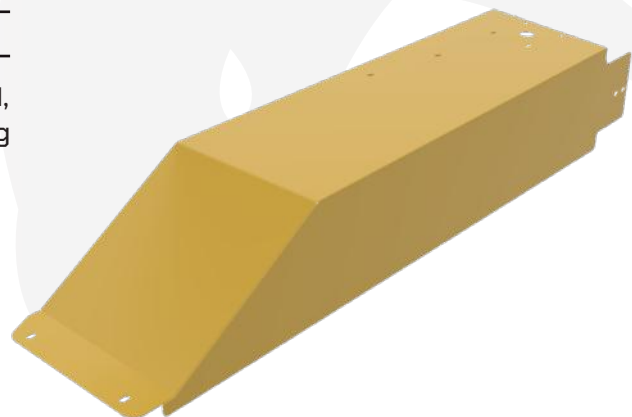
Part No. 5502413

A side cover plate to suit the left hand side of a CAT 24M, designed to protect hydraulic hoses and electrical wiring on the front chassis frame.

Replaces OEM No. **316-2322**

Features:

- Heavy-duty steel construction
- Stocked and ready for despatch



OPEN CUT MACHINE P

CAT
777 HAUL TRUCK



ELIMINATING DOWNTIME, MAXIMISING EFFICIENCY.



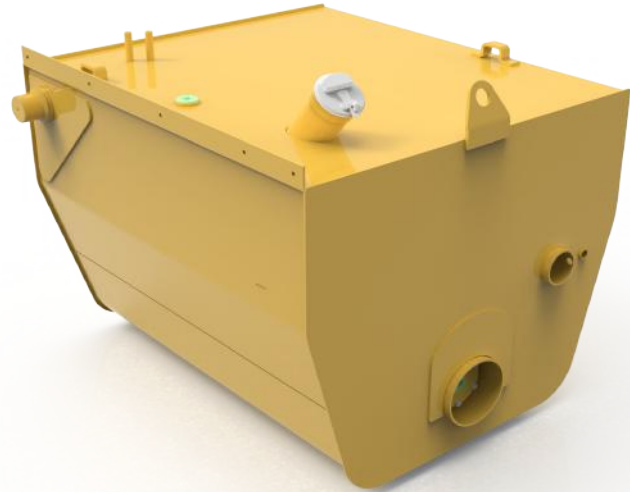
CAT 777F FUEL TANK

Part No. 5601040

ROX's 777F Fuel Tank is a direct replacement for CAT OEM No. 219-9712.

Features:

- Heavy-duty steel construction
- Optional Armour Flex coating for extra protection
- Fast-fill options available
- Delivered in certified transport frame
- Complete with all components
- Stocked and ready for despatch
- Available for ROX Fuel Tank Refurb/Rotable [see page 28]



CAT 777F CHASSIS HANDRAIL KIT

Part No. 5503417

A removable handrail to be fitted to the 777F chassis, designed and engineered to provide fall protection during maintenance.

Features:

- Lightweight, yet heavy-duty aluminium construction
- Clamps to chassis via hand bolts
- Swinging gates
- Set includes 2 identical handrails (LH & RH)



CAT 777G EMERGENCY EGRESS LADDER

Part No. 5502447

Direct replacement for OEM No. 312-0850. This design is a result of a recurring incidents where emergency ladders are destroyed weekly.

Features:

- Gas struts for controlled release and easy lifting
- Heavy-duty steel and aluminum
- Working Load Limit of 150kg
- Easy-to-use latching system
- Fully TIG welded ladder construction
- Mounts to LHS of cab



CAT
785 HAUL TRUCK

ELIMINATING DOWNTIME, MAXIMISING EFFICIENCY.



CAT 785C/D FUEL TANK

Part No. 5607174

ROX's 785C/D Fuel Tank is a direct replacement for CAT OEM No. 434-0955.

Features:

- Heavy-duty steel construction
- Optional Armour Flex coating for extra protection
- Fast-fill options available
- Delivered in certified transport frame
- Complete with all components
- Stocked and ready for despatch
- Available for ROX Fuel Tank Refurb/Rotable [see page 28]



CAT 785C/D FUEL TANK TRANSPORT FRAME

Part No. 5607176

A designed and engineered frame for the CAT 785C/D Fuel Tank. Maximises safety and efficiency during transport and storage.

Features:

- Heavy-duty steel construction
- Tie-down points
- Rubber pads to keep tank from being scratched/dented in transit

CAT 785 CHASSIS HANDRAIL KIT

Part No. 5503417

A removable handrail to be fitted to the 785 chassis, designed and engineered to provide fall protection during maintenance. Certified & compliant with Australian Standards.

Features:

- Lightweight, yet heavy-duty aluminium construction
- Clamps to chassis via hand bolts
- Swinging gates
- Set includes 2 identical handrails (LH & RH)
- Height: 1050mm, Length: 2930mm



CAT 789 HAUL TRUCK



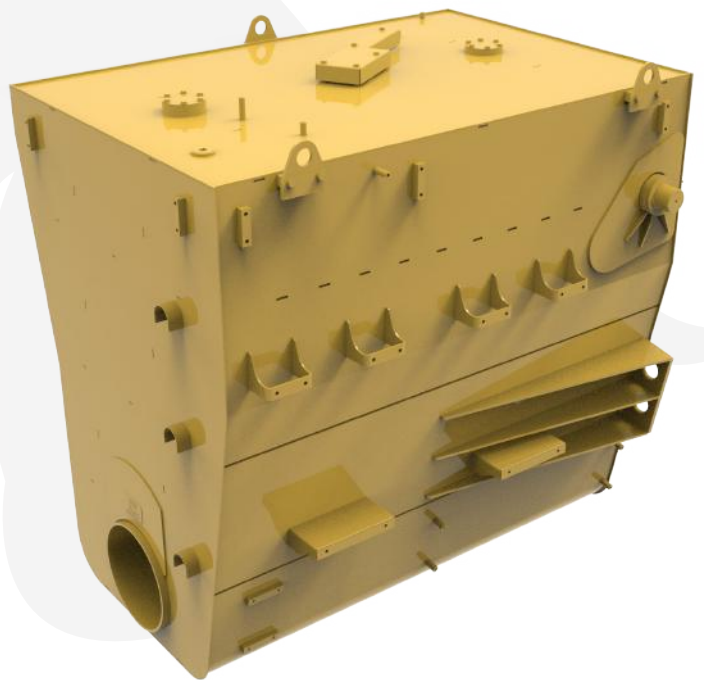
CAT 789D FUEL TANK

Part No. 5507789

ROX's 789D Fuel Tank is a direct replacement for CAT OEM No. 347-0420.

Features:

- Heavy-duty steel construction
- Optional Armour Flex coating for extra protection
- Fast-fill options available
- Delivered in certified transport frame
- Complete with all components
- Stocked and ready for despatch
- Available for ROX Fuel Tank Refurb/Rotable [see page 28]



**CAT
793 HAUL TRUCK**

CAT 793F

793F

50/80 R57 X 260

MICHELIN

ELIMINATING DOWNTIME, MAXIMISING EFFICIENCY.



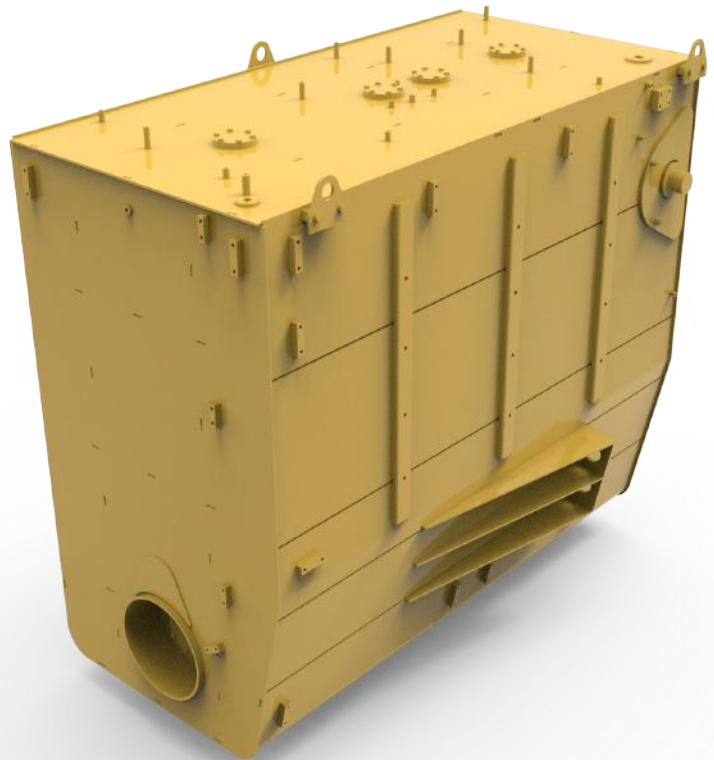
CAT 793F FUEL TANK

Part No. 5600635

ROX's 793F Fuel Tank is a direct replacement for CAT OEM No. 380-1454.

Features:

- Heavy-duty steel construction
- Optional Armour Flex coating for extra protection
- Fast-fill options available
- Delivered in certified transport frame
- Complete with all components
- Stocked and ready for despatch
- Available for ROX Fuel Tank Refurb/Rotable [see page 28]



CAT 793F FUEL TANK TRANSPORT FRAME

Part No. 5504528

A transport and storage frame designed and engineered for the CAT 793F Fuel Tank. Fitted with rubber pads to keep tank from damage during transit.

Features:

- Heavy-duty steel construction
- WLL: 2T
- Forklift slots (2 sizes)
- Tie-down points
- Rubber pads to keep tank from being scratched/dented in transit

CAT 793F CHASSIS HANDRAILS

Part No. 5502341

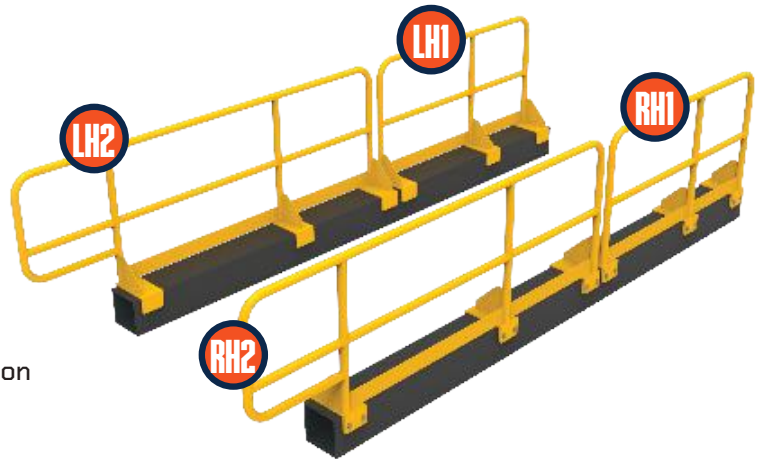
A removable handrail to be fitted to the 793F chassis, designed and engineered to provide fall protection during maintenance. Certified and compliant with Australian Standards.

Individual parts:

- 1x 793F LH1 - 1700mmL
- 1x 793F LH2 - 2770mmL
- 1x 793F RH1 - 1700mmL
- 1x 793F RH2 - 2770mmL

Features:

- Heavy-duty steel construction
- Finished in CAT Yellow



CAT 793F CORNER MODULE

Part No. 5504223

Direct replacement for CAT OEM No. 300-4166 & 366-3292 (Area B). Certified and compliant with Australian Standards.

Features:

- Heavy-duty steel construction
- Fitted with a non-slip deck
- Includes handrail kit
- Finished in CAT Yellow
- Stocked and ready for despatch

CAT 793F REAR CHASSIS HANDRAIL

Part No. 5501294

Lightweight handrails clamp on to rear chassis to provide fall protection during maintenance.

Features:

- TIG welded lightweight aluminium construction
- Powder coated in Y-14 Safety Yellow
- Threaded blocks clamp onto chassis



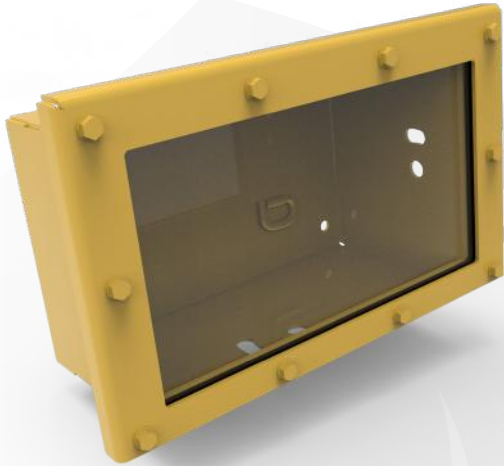
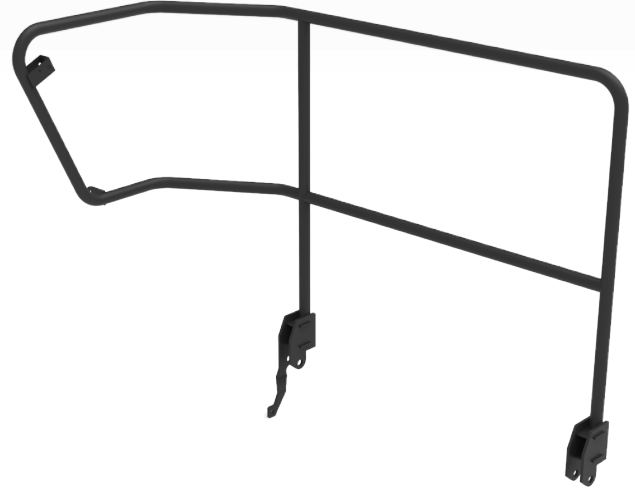
CAT 793F BEHIND CAB HANDRAIL LH

Part No. 5600043

An improved replacement for OEM No. **438-9864**. Heavy-duty steel handrail designed and engineered to provide safety while behind the cab of a CAT 793F.

Features:

- Heavy-duty steel construction
- Finished in Y-14 Safety Yellow, Satin Black, or to site requirement



CAT 793F AUTONOMOUS DETECTION BOX ASSEMBLY

Part No. 5600371

Direct replacement for OEM No. **355-8398**. A cost effective replacement for the CAT minestar box.

Features:

- Includes box, clear lens, gaskets, fixings and clamp plate
- Excluding electrical components
- Finished in CAT Yellow

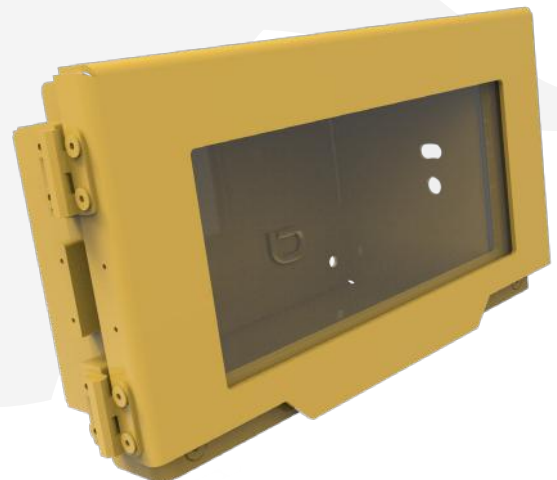
CAT 793F AMT RADAR BOX ACCESS COVER SET

Part No. 5506566

Custom designed hinged radar box covers to replace OEM No. **355-8398**. Durable design for protection from the harsh environment and hinged for ease of access.

Features:

- Includes 3x CAT 793F AMT Radar Box Access Cover (5506565)
- Reversible, bolt-on design
- Neoprene seal gaskets
- Steel parts finished in CAT Yellow



CAT 793F FULL HANDRAIL CONVERSION KIT - NEW STYLE

Part No. 5600300

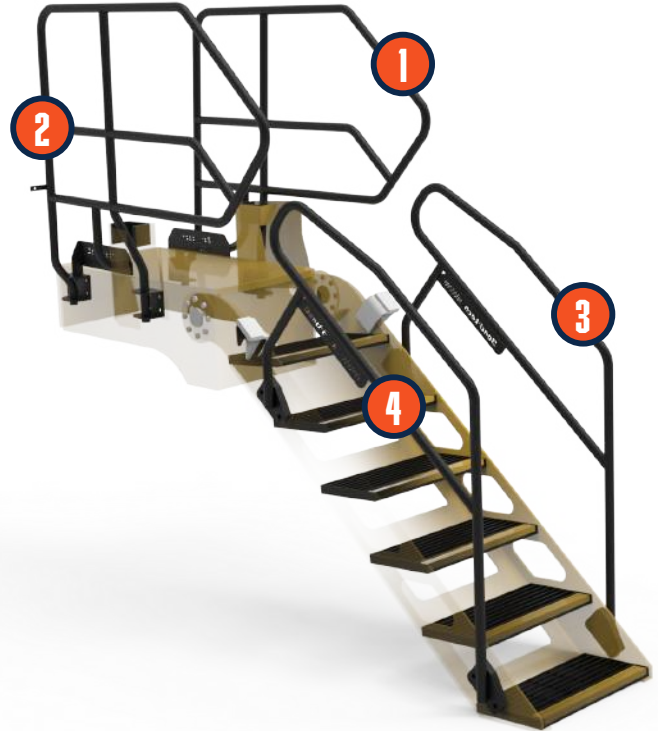
Direct replacement for CAT OEM No. 328-1140. This conversion kit is designed specifically to suit the upgraded ladder (contact team if unsure).

Individual parts:

- Platform Handrail RH (1) - 5600296
- Platform Handrail LH (2) - 5600297
- Stairway Handrail RH (3) - 5600289
- Stairway Handrail LH (4) - 5600299

Features:

- Heavy-duty steel construction
- Mounts in existing bolt holes on top
- Ladder handrails simply require welded stud plates for bolting handrails on



CAT 793F FULL HANDRAIL CONVERSION KIT

Part No. 5501853

Direct replacement for CAT OEM No. 328-1140.

Individual parts:

- Platform Handrail LH (1) - 5000282
- Platform Handrail RH (2) - 5000281
- Stairway Handrail LH (3) - 5000284
- Stairway Handrail RH (4) - 5000283

Features:

- Heavy-duty steel construction
- Mounts in existing bolt holes on top
- Ladder handrails simply require welded stud plates for bolting handrails on

**CAT
854K WHEEL DOZER**



ELIMINATING DOWNTIME, MAXIMISING EFFICIENCY.



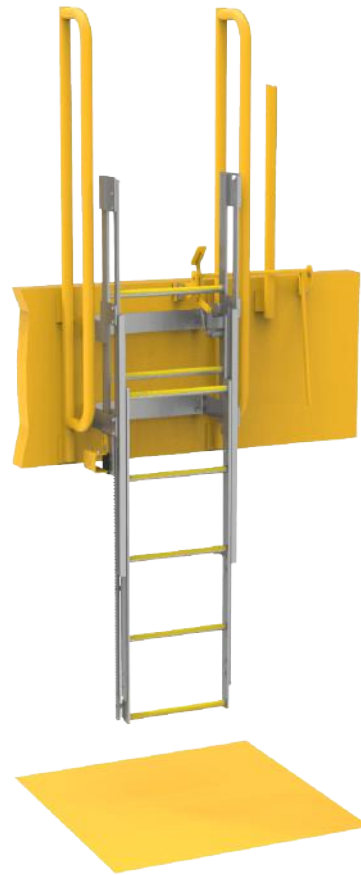
CAT 854K EMERGENCY EGRESS LADDER

Part No. 5502306

This design is a result of a reoccurring incident on mine sites, where emergency ladders on CAT 854K machines are damaged and destroyed weekly. Certified & compliant with Australian Standards.

Features:

- WLL: 150kg
- Non-slip ladder nosings
- High strength aluminium ladder
- Heavy-duty steel main frame
- Torqued gear unit for controlled release & easy lifting
- Heavy-duty roller guides
- Release pedal for operating on the truck
- Patented design
- Non-slip ladder rungs



CAT 854K FRONT HANDRAIL KIT

Part No. 5504732

Handrails designed and engineered for protection of maintenance personnel on the front of the CAT 854K.

Features:

- Heavy-duty aluminium ladder and sides
- Heavy-duty steel main frame
- Non-slip grating on decks
- Non-slip nosings on edges of decks
- Access gate with vibration safe latch
- Vibration damping handrail mounts
- Finished in Y-14 Safety Yellow

CAT 994H WHEELLOADER



ELIMINATING DOWNTIME, MAXIMISING EFFICIENCY.



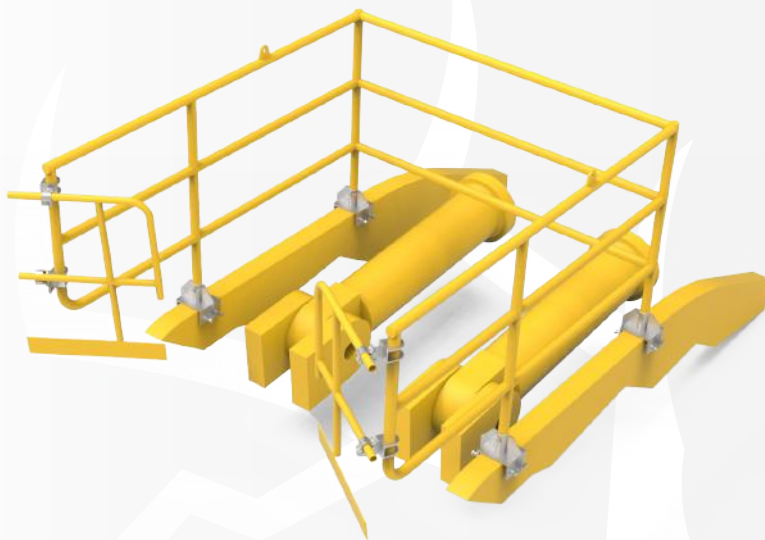
CAT 994 EMERGENCY EGRESS LADDER

Part No. 5504157

This design is a result of a reoccurring incident on mine sites, where emergency ladders on CAT 994 machines are damaged and destroyed weekly. Certified & compliant with Australian Standards.

Features:

- WLL: 150kg
- Non-slip ladder nosings
- High strength aluminium ladder
- Heavy-duty steel main frame
- Torqued gear unit for controlled release & easy lifting
- Heavy-duty roller guides
- Release pedal for operating on the truck
- Patented design



LOADER LIFT ARM FALL PROTECTION

Part No. 5503681

Handrails which clamp to the lift arms of a CAT 994 or Komatsu WA1200 loader for enhanced safety.

Features:

- Lightweight aluminium handrails
- Heavy-duty steel clamps
- Clamps to lift arms with hand bolts (provided)
- Fitted with lifting points for ease of installment
- Finished in Y-14 Safety Yellow

BUILT BETTER



ROX 

ROX 

FUEL TANK REFURBISHMENT

We provide value that is unrivalled in the industry when it comes to ROX fuel tanks.

All tanks come complete with all fitting components, with optional features such as our Armour Flex coating for enhanced protection, a certified transport and installation frame for maximised safety and efficiency, and a range of fast-fill fuel injection options to suit your sites requirements.

REFURBISHMENT

We understand that above all this is a time sensitive process, so our aim is to ensure you are receiving a fully operational replacement tank without incurring unnecessary downtime.

The first step is to reach out to one of our ROX team to discuss the extent of damage, your current stock level (and time sensitivity) and other specific requirements. From there we can determine the best path to take. Depending on the urgency, we can send out one of our stocked tanks with no project lead time, otherwise we will provide a quote and lead time on a full tank refurbishment.





REFURBISHMENT PROCESS BREAKDOWN

1. Tank is stripped back, cleaned, NDT crack test and thickness testing
2. Finalise scope of works and quote
3. Reweld cracks and carry out repairs as per AS1692-2006
4. Pressure test with air to 35kPa (unless noted otherwise) and hold for 40 min
5. Surface treatment with optional Armour Flex coating for extra protection or finished in machine colour
6. Returned to site on certified fuel tank transport and installation frame

ROTABLE PROGRAM

ROX's Fuel Tank Rotable Program provides exceptional value and significantly minimises downtime as it ensures stock is always on hand.

This follows the same process for refurbishment above, however instead of waiting for the repairs you can purchase a new tank from our stocked range sent with no project lead time. Once the refurbished tank is ready we will send it back to site where you conveniently have a tank ready to go in case of emergency (or planned shutdown), and the process continues once the new tank is due for refurbishment.

Current tanks in stock and available for the rotatable program are CAT 793F, 789D, 785C/D, 777F, D10T and D10T2 with more CAT, Komatsu and Hitachi tanks available soon.

HITACHI EX1900 EXCAVATOR

HITACHI

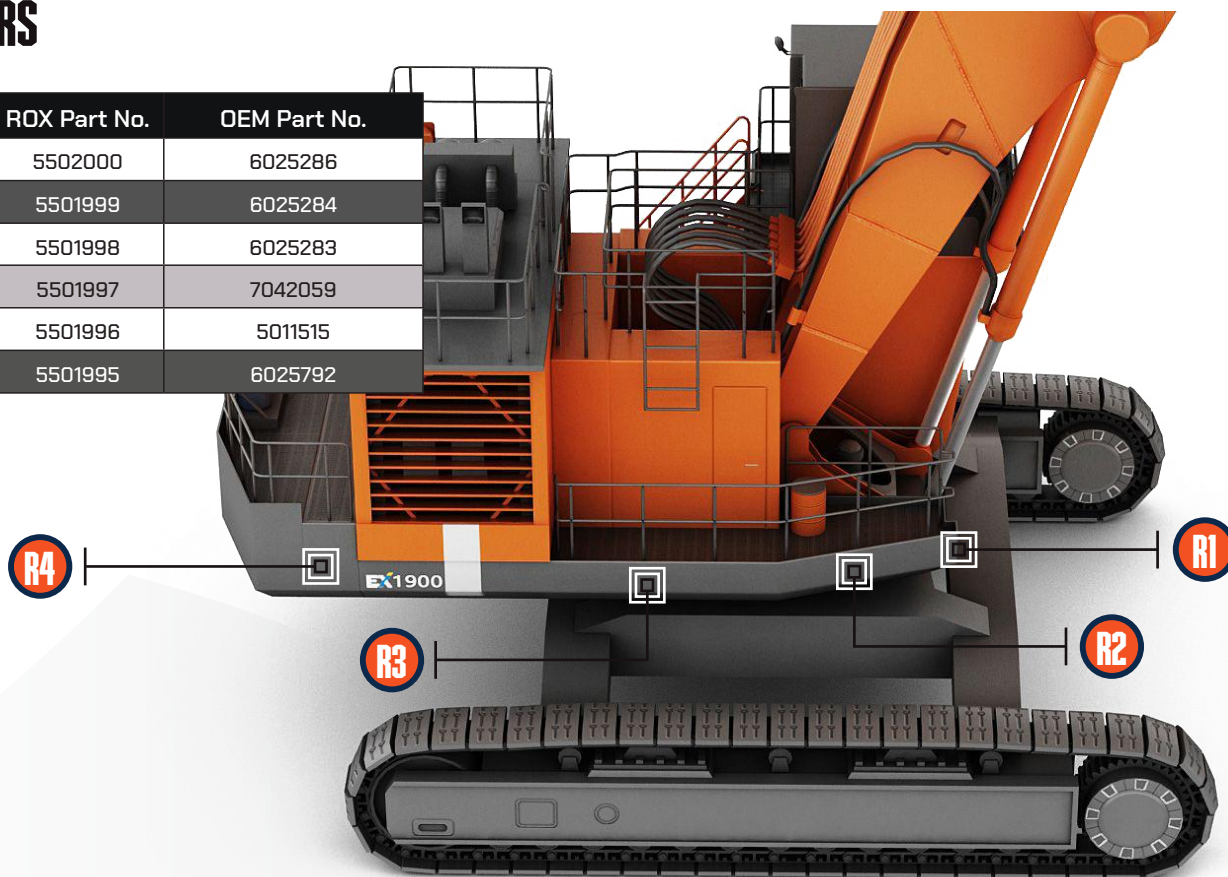
EX1900

ELIMINATING DOWNTIME, MAXIMISING EFFICIENCY.



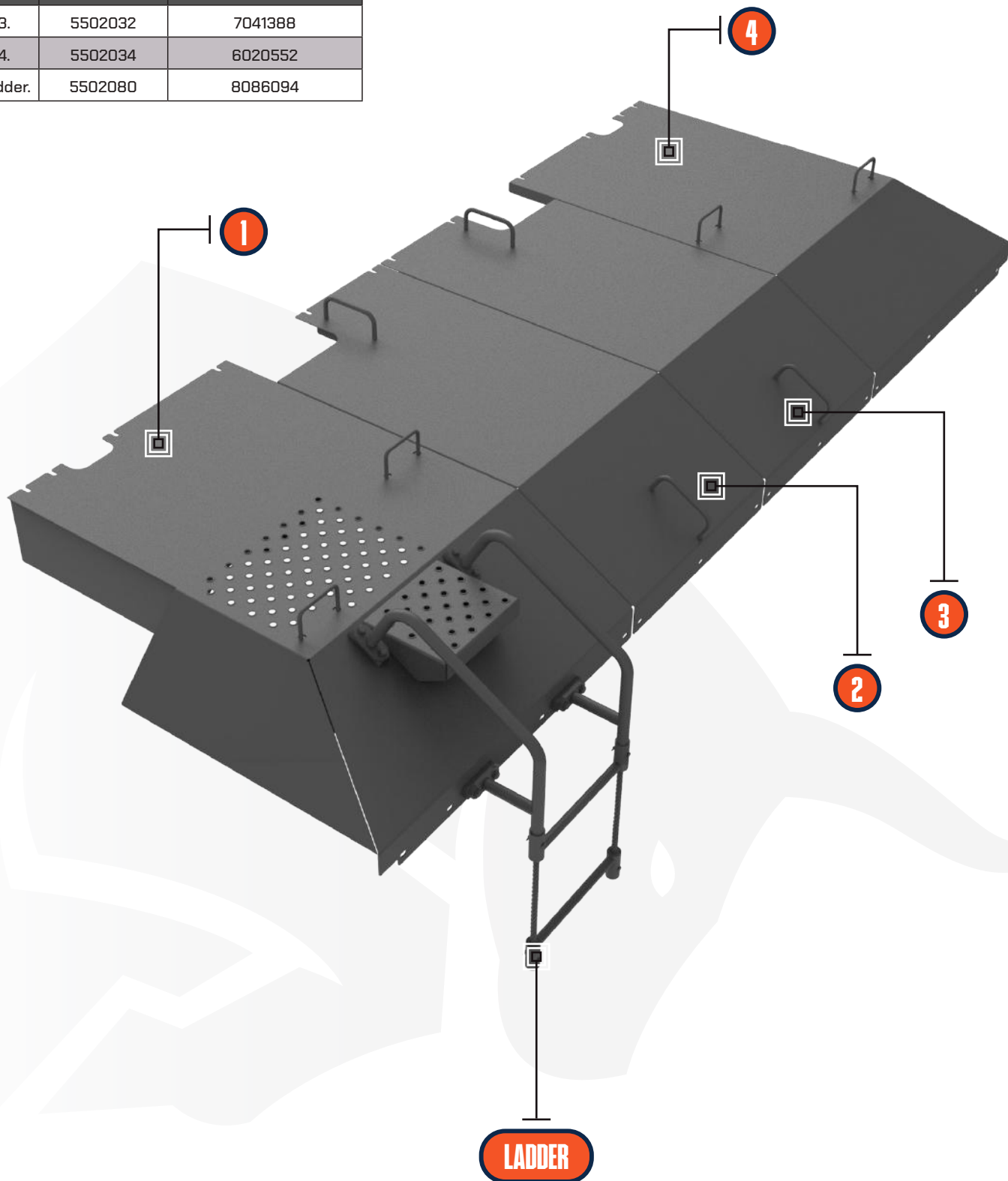
HITACHI EX1900 FENDERS

Ref.	ROX Part No.	OEM Part No.
R1.	5502000	6025286
R2.	5501999	6025284
R3.	5501998	6025283
R4.	5501997	7042059
L1.	5501996	5011515
L2.	5501995	6025792



HITACHI EX1900
TRAVEL MOTOR COVERS

Ref.	ROX Part No.	OEM Part No.
1.	5502033	6020529
2.	5502031	7041385
3.	5502032	7041388
4.	5502034	6020552
Ladder.	5502080	8086094



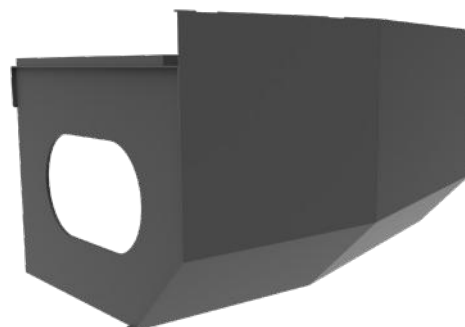


HITACHI EX1900-6 FENDER R1

Part No. 5502000

Features:

- Construction: Heavy-duty steel
- Certified and compliant with Australian Standards
- Direct replacement for OEM No. **6025286**
- Stocked and ready for immediate despatch

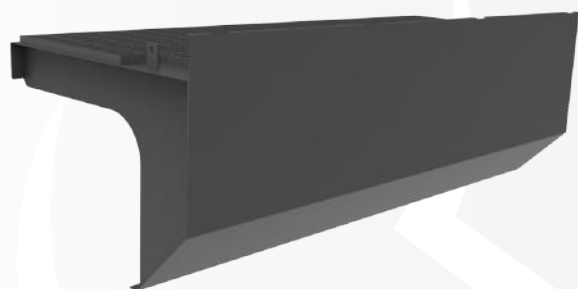


HITACHI EX1900-6 FENDER R2

Part No. 5501999

Features:

- Construction: Heavy-duty steel
- Certified and compliant with Australian Standards
- Direct replacement for OEM No. **6025284**
- Stocked and ready for immediate despatch

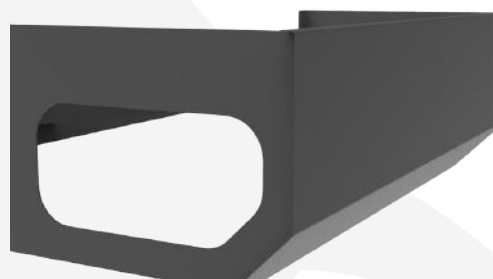


HITACHI EX1900-6 FENDER R3

Part No. 5501998

Features:

- Construction: Heavy-duty steel
- Certified and compliant with Australian Standards
- Direct replacement fro OEM No. **6025283**
- Stocked and ready for immediate despatch

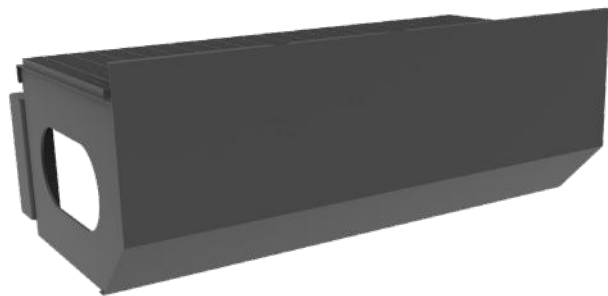


HITACHI EX1900-6 FENDER R4

Part No. 5501997

Features:

- Construction: Heavy-duty steel
- Certified and compliant with Australian Standards
- Direct replacement for OEM No. **7042059**
- Stocked and ready for immediate despatch
- Suits models EX1900-5, EX1900-6



HITACHI EX1900-6 FENDER L1

Part No. 5501996

Features:

- Construction: Heavy-duty steel
- Certified and compliant with Australian Standards
- Direct replacement for OEM No. **5011515**
- Stocked and ready for immediate despatch

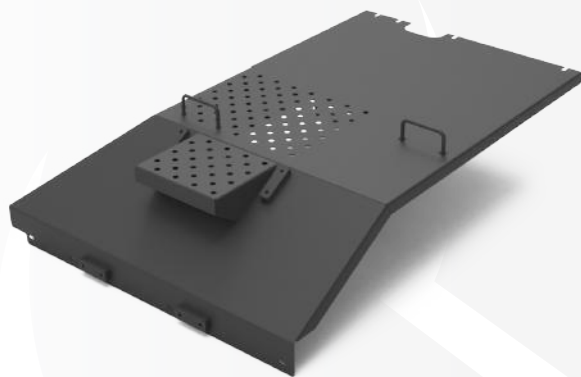


HITACHI EX1900-6 FENDER L2

Part No. 5501995

Features:

- Construction: Heavy-duty steel
- Certified and compliant with Australian Standards
- Direct replacement for OEM No. **6025792**
- Stocked and ready for immediate despatch

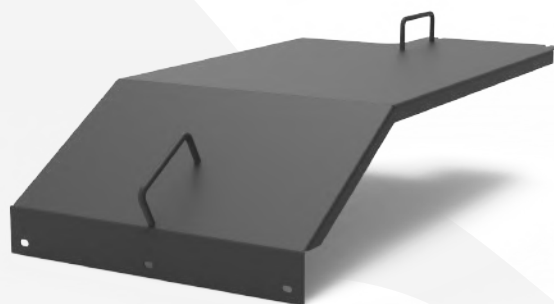


HITACHI EX1900 TRAVEL MOTOR COVER 1

Part No. 5502033

Features:

- Construction: Heavy-duty steel
- Certified and compliant with Australian Standards
- Direct replacement for OEM No. **6020529**
- Stocked and ready for immediate despatch
- Suits models EX1900-5, EX1900-6

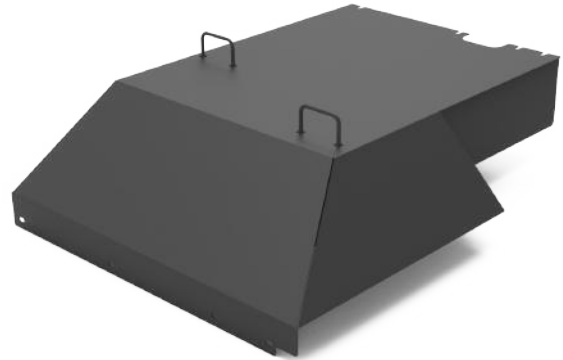
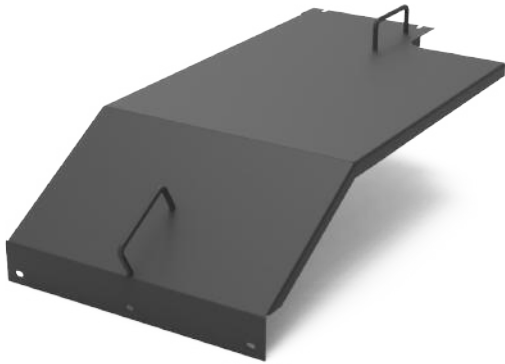


HITACHI EX1900 TRAVEL MOTOR COVER 2

Part No. 5502031

Features:

- Construction: Heavy-duty steel
- Certified and compliant with Australian Standards
- Direct replacement for OEM No. **7041385**
- Stocked and ready for immediate despatch
- Suits models EX1900-5, EX1900-6



HITACHI EX1900 TRAVEL MOTOR COVER 3

Part No. 5502032

Features:

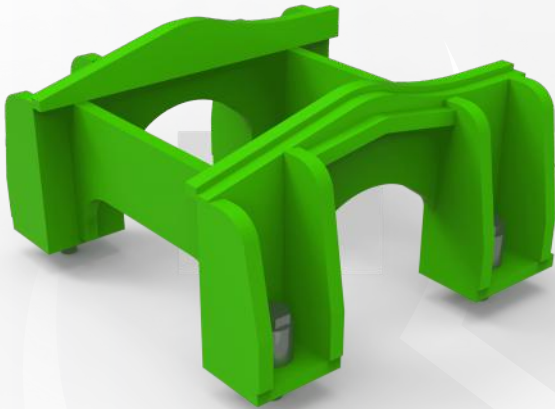
- Construction: Heavy-duty steel
- Certified and compliant with Australian Standards
- Direct replacement for OEM No. 7041388
- Stocked and ready for immediate despatch
- Suits models EX1900-5, EX1900-6

HITACHI EX1900 TRAVEL MOTOR COVER 4

Part No. 5502034

Features:

- Construction: Heavy-duty steel
- Certified and compliant with Australian Standards
- Direct replacement for OEM No. 6020552
- Stocked and ready for immediate despatch
- Suits models EX1900-5, EX1900-6



TRACK FRAME GUARD - FRONT

Part No. 5502043

Features:

- Construction: Heavy-duty steel
- Bolts and spacers included
- Direct replacement for OEM No. 7026071
- Suits models EX1900-5, EX1900-6

TRACK FRAME GUARD - MIDDLE / REAR

Part No. 5502044

Features:

- Construction: Heavy-duty steel
- Bolts and spacers included
- Direct replacement for OEM No. 7026024
- Suits models EX1900-5, EX1900-6



HITACHI EX1900-6 ACCESS LADDER

Part No. 5502080

Features:

- Heavy-duty steel construction
- Certified and compliant with Australian Standards
- Direct replacement for OEM No. **8086094**
- Stocked and ready for immediate despatch
- Suits models EX1900-5, EX1900-6



HITACHI EX1900-6 FENDER BRACKET

Part No. 5502081

Features:

- Heavy-duty steel construction
- Certified and compliant with Australian Standards
- Direct replacement for OEM No. **8108328**
- Stocked and ready for immediate despatch

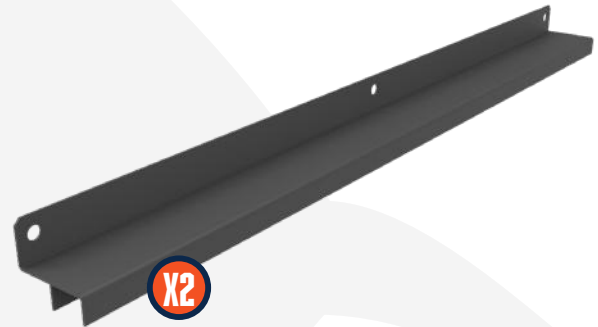


HITACHI FENDER BRACKET

Part No. 5502082

Features:

- Heavy-duty steel construction
- Certified and compliant with Australian Standards
- Direct replacement for OEM No. **8108437**
- Stocked and ready for immediate despatch
- Suits models EX1900-6, EX2600-6



HITACHI EX1900-6 COVER

Part No. 5502085

Features:

- Heavy-duty steel construction
- Certified and compliant with Australian Standards
- Direct replacement for OEM No. **8110813**
- Stocked and ready for immediate despatch
- 2x units per Hitachi EX1900-6 Fender L2

**HITACHI
EX2500 EXCAVATOR**



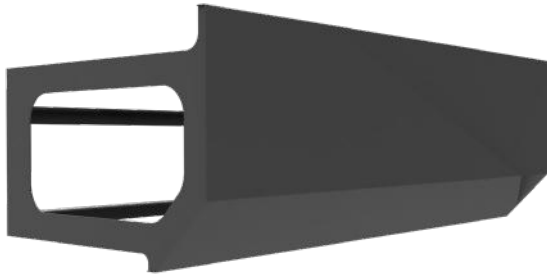
ELIMINATING DOWNTIME, MAXIMISING EFFICIENCY.



HITACHI EX2500 FENDERS

Ref.	ROX Part No.	OEM Part No.
R1.	5502052	6024996
R2.	5502051	5010985
R3.	5502050	5010976
R4.	5502053	7030106
L1.	5502054	5011381
L2.	5502055	7051609



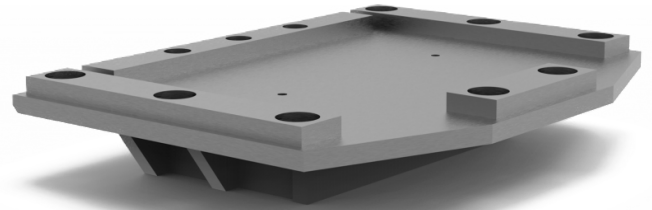


HITACHI EX2500-6 FENDER R4

Part No. 5502053

Features:

- Construction: Heavy-duty steel
- Certified and compliant with Australian Standards
- Direct replacement for OEM No. 7030106
- Stocked and ready for immediate despatch
- Suits models EX2500-5, EX2500-6



HITACHI EX2500 BASH PLATE

Part No. 55020152

Features:

- Construction: Heavy-duty steel
- Modular design
- Painted to site or machine specific colours



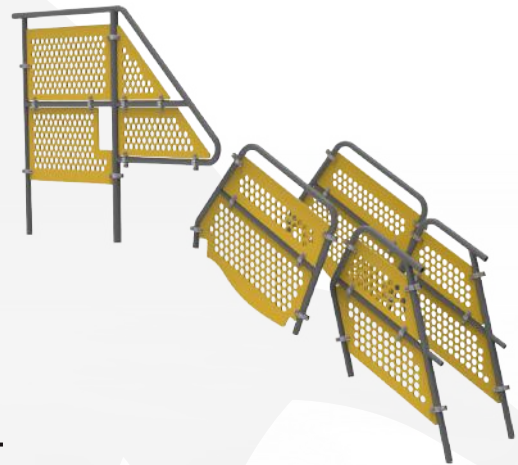
HITACHI EX2500 CYLINDER PROTECTION

Part No. 5503492

Designed to minimise damage and downtime that occurs to the hydraulic rams during operation.

Features:

- Extremely robust, flexible rock deflection
- Provides full cover to the ram with no excess weight or restriction
- Fitting components supplied
- Cost effective solution, easy to install
- Stocked and ready for despatch
- Suits model EX2500-6



HITACHI EX2500-6 STAIRWAY / HANDRAIL INFILL PANEL SET

Part No. 550484

Features:

- Construction: Heavy-duty steel
- Bolts and spacers included
- OEM No. 7026024
- Suits models EX1900-5, EX1900-6

ROX 

OPEN CUT MACHINE PARTS

HITACHI EX3600 EXCAVATOR

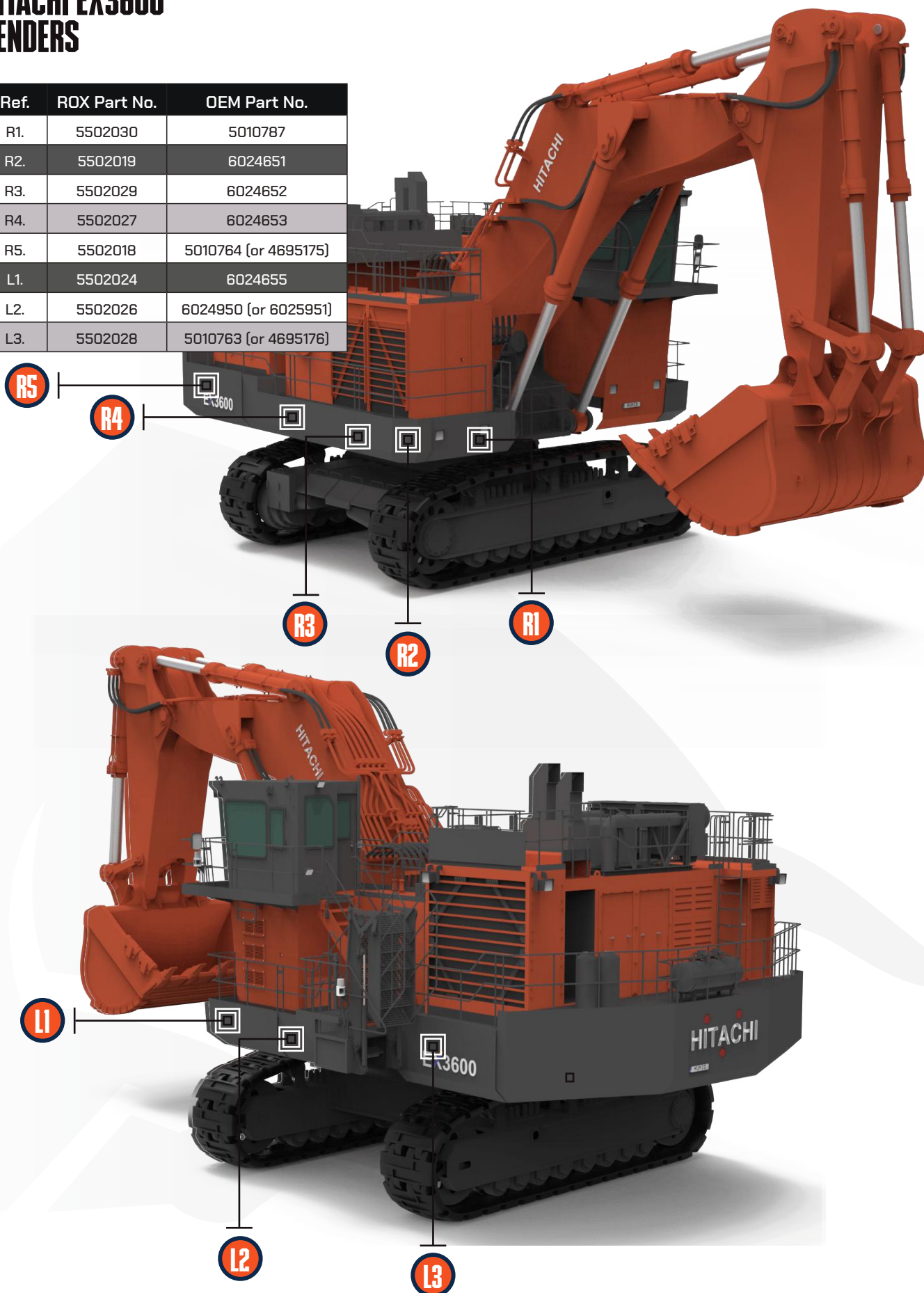
EX360

ELIMINATING DOWNTIME, MAXIMISING EFFICIENCY.



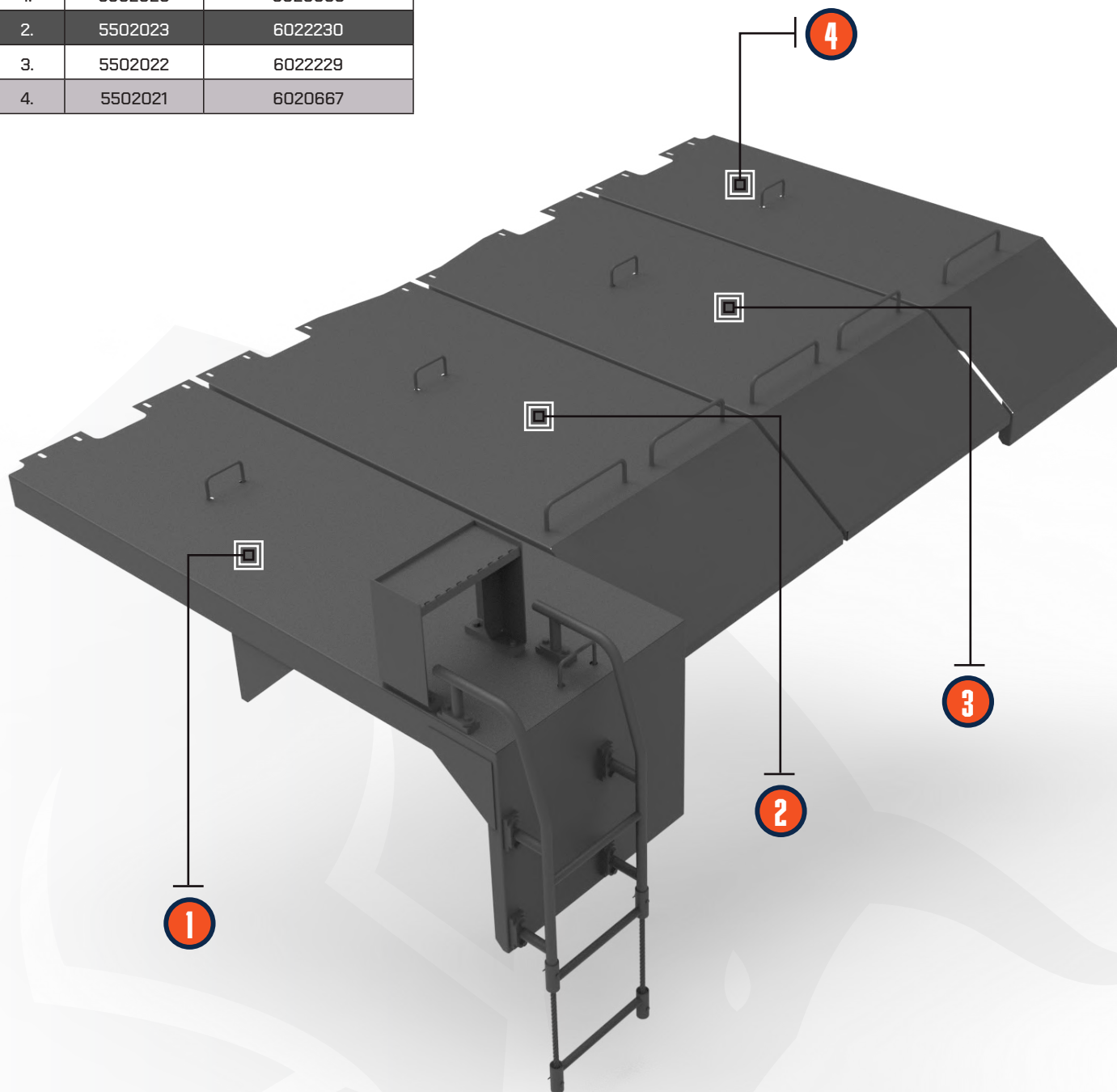
HITACHI EX3600 FENDERS

Ref.	ROX Part No.	OEM Part No.
R1.	5502030	5010787
R2.	5502019	6024651
R3.	5502029	6024652
R4.	5502027	6024653
R5.	5502018	5010764 (or 4695175)
L1.	5502024	6024655
L2.	5502026	6024950 (or 6025951)
L3.	5502028	5010763 (or 4695176)



HITACHI EX3600 TRAVEL MOTOR COVERS

Ref.	ROX Part No.	OEM Part No.
1.	5502020	6020666
2.	5502023	6022230
3.	5502022	6022229
4.	5502021	6020667





HITACHI EX3600-6 FENDER R1

Part No. 5502030

Features:

- Construction: Heavy-duty steel
- Certified and compliant with Australian Standards
- Direct replacement for OEM No. 5010787
- Stocked and ready for immediate despatch
- OEM replacement handrail available upon request

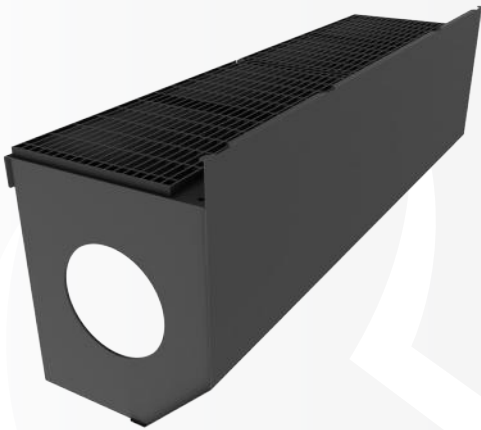


HITACHI EX3600-6 FENDER R2

Part No. 5502019

Features:

- Construction: Heavy-duty steel
- Certified and compliant with Australian Standards
- Direct replacement for OEM No. 6024651
- Stocked and ready for immediate despatch
- OEM replacement handrail available upon request

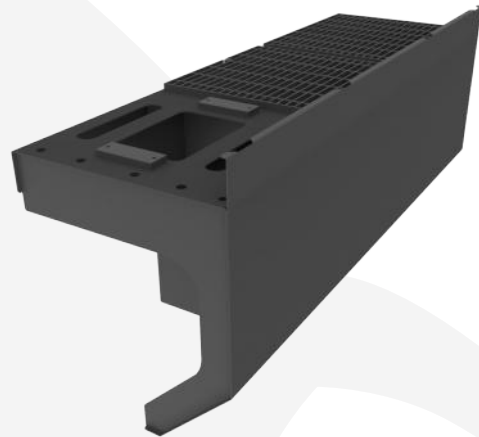


HITACHI EX3600-6 FENDER R3

Part No. 5502029

Features:

- Construction: Heavy-duty steel
- Certified and compliant with Australian Standards
- Direct replacement for OEM No. 6024652
- Stocked and ready for immediate despatch
- OEM replacement handrail available upon request

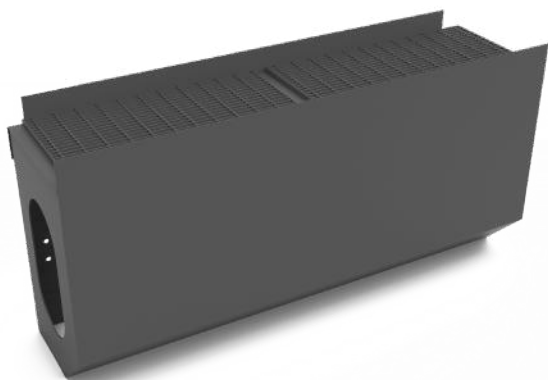


HITACHI EX3600-6 FENDER R4

Part No. 5502027

Features:

- Construction: Heavy-duty steel
- Certified and compliant with Australian Standards
- Direct replacement for OEM No. 6024653
- Stocked and ready for immediate despatch
- OEM replacement handrail available upon request



HITACHI EX3600-6 FENDER R5

Part No. 5502018

Features:

- Construction: Heavy-duty steel
- Certified and compliant with Australian Standards
- Direct replacement for OEM No. **5010764** (or **4695175**)
- Stocked and ready for immediate despatch
- OEM replacement handrail available upon request

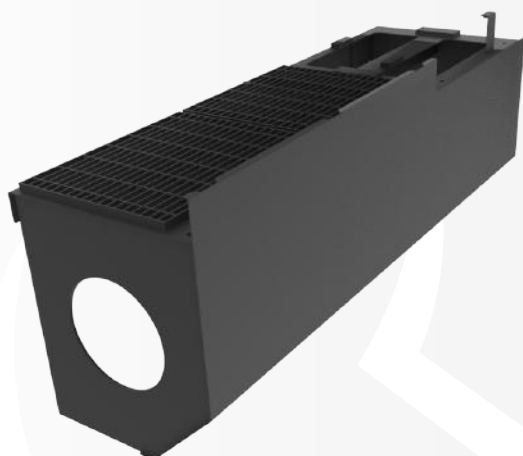


HITACHI EX3600-6 FENDER L1

Part No. 5502024

Features:

- Construction: Heavy-duty steel
- Certified and compliant with Australian Standards
- Direct replacement for OEM No. **6024655**
- Stocked and ready for immediate despatch
- OEM replacement handrail available upon request

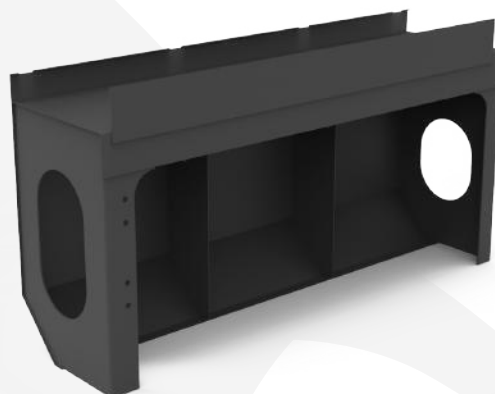


HITACHI EX3600-6 FENDER L2

Part No. 5502026

Features:

- Construction: Heavy-duty steel
- Certified and compliant with Australian Standards
- Direct replacement for OEM No. **6024950**
- Stocked and ready for immediate despatch
- OEM replacement handrail available upon request

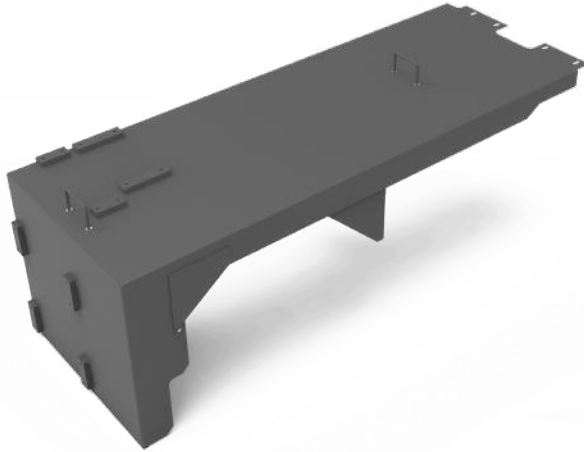


HITACHI EX3600-6 FENDER L3

Part No. 5502028

Features:

- Construction: Heavy-duty steel
- Certified and compliant with Australian Standards
- Direct replacement for OEM No. **5010763** (or **4695176**)
- Stocked and ready for immediate despatch
- OEM replacement handrail available upon request

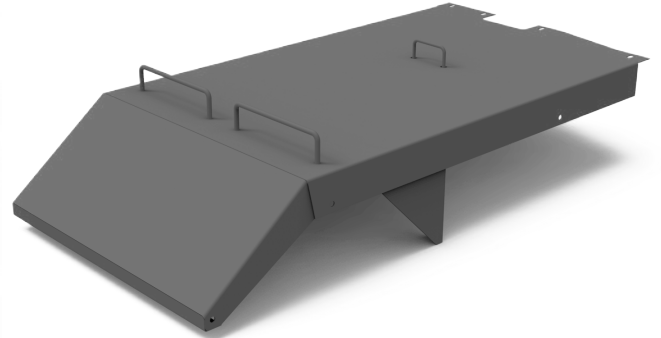


HITACHI EX3600 TRAVEL MOTOR COVER 1

Part No. 5502020

Features:

- Construction: Heavy-duty steel
- Certified and compliant with Australian Standards
- Direct replacement for OEM No. **6020666**
- Stocked and ready for immediate despatch
- Suits models EX3600-5, EX3600-6

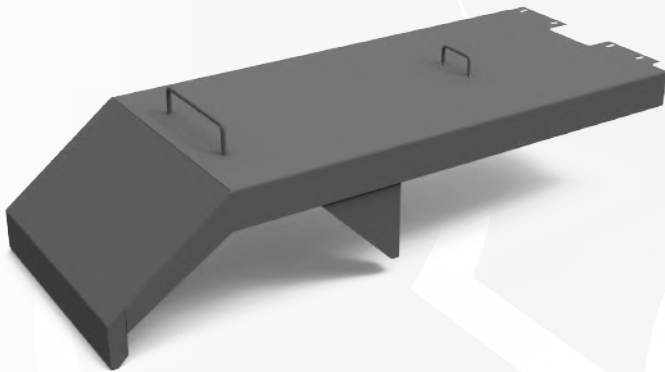


HITACHI EX3600 TRAVEL MOTOR COVER 2

Part No. 5502023

Features:

- Construction: Heavy-duty steel
- Certified and compliant with Australian Standards
- Direct replacement for OEM No. **5010787**
- Stocked and ready for immediate despatch
- Suits models EX3600-5, EX3600-6

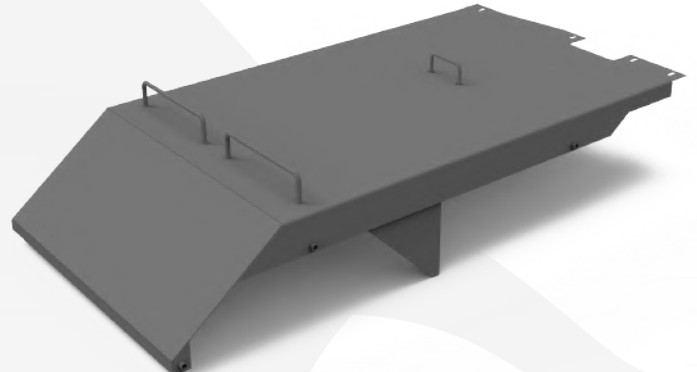


HITACHI EX3600 TRAVEL MOTOR COVER 3

Part No. 5502022

Features:

- Construction: Heavy-duty steel
- Certified and compliant with Australian Standards
- Direct replacement for OEM No. **6022229**
- Stocked and ready for immediate despatch
- Suits models EX3600-5, EX3600-6



HITACHI EX3600 TRAVEL MOTOR COVER 4

Part No. 5502021

Features:

- Construction: Heavy-duty steel
- Certified and compliant with Australian Standards
- Direct replacement for OEM No. **6020667**
- Stocked and ready for immediate despatch
- Suits models EX3600-5, EX3600-6

HITACHI EX3600 BASH PLATE

Part No. 5502903

Features:

- Construction: Heavy-duty steel
- Certified and compliant with Australian Standards
- Direct replacement for OEM No. **6020666**
- Stocked and ready for immediate despatch



HITACHI EX3600 TRAVEL TRANSMISSION GUARD ASSEMBLY LH

Part No. 5600176

We offer high-performance replacement guards for the Hitachi EX3600, a part that is constantly damaged during operation.

Includes OEM part numbers:

7041621	8086619
8086617	8086618
7041622	8080534

Features:

- Construction: Heavy-duty steel
- Suits models EX3600-5, EX3600-6

HITACHI EX3600 TRAVEL TRANSMISSION GUARD ASSEMBLY RH

Part No. 5600175

We offer high-performance replacement guards for the Hitachi EX3600, a part that is constantly damaged during operation.

Includes OEM part numbers:

7041620	8086619
8086616	8086618
7041623	8080534

Features:

- Construction: Heavy-duty steel
- Suits models EX3600-5, EX3600-6



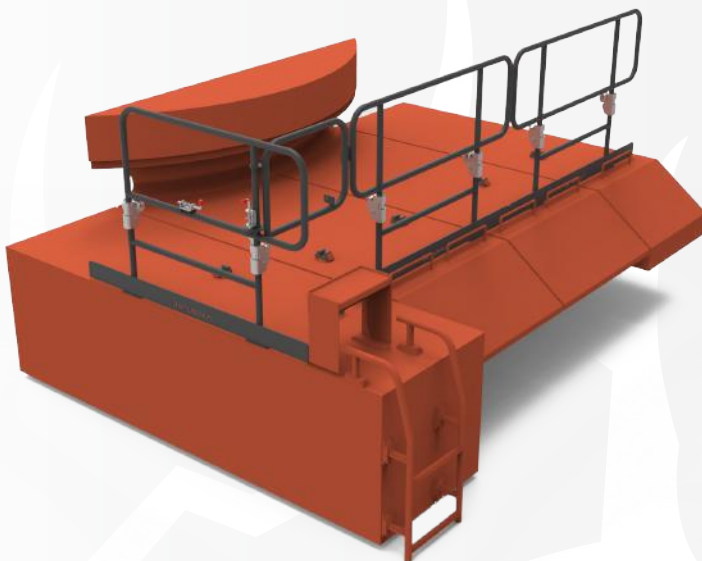
HITACHI EX3600 CYLINDER PROTECTION

Part No. 5502294

Designed to minimise damage and downtime that occurs to the hydraulic rams during operation.

Features:

- Extremely robust, flexible rock deflection
- Provides full cover to the ram with no excess weight or restriction
- Fitting components supplied
- Cost effective solution, easy to install
- Stocked and ready for despatch



HITACHI EX3600 TRAVEL MOTOR COVER FOLDING HANDRAILS

Part No. 5503665

Provides a safe working space for the top of the Hitachi EX3600 travel motor covers.

Features:

- Heavy wall steel pipe build
- Mid-folding hinge design with kickplates
- Kickplates included
- Certified and compliant with Australian Standards

HITACHI EX5600 EXCAVATOR

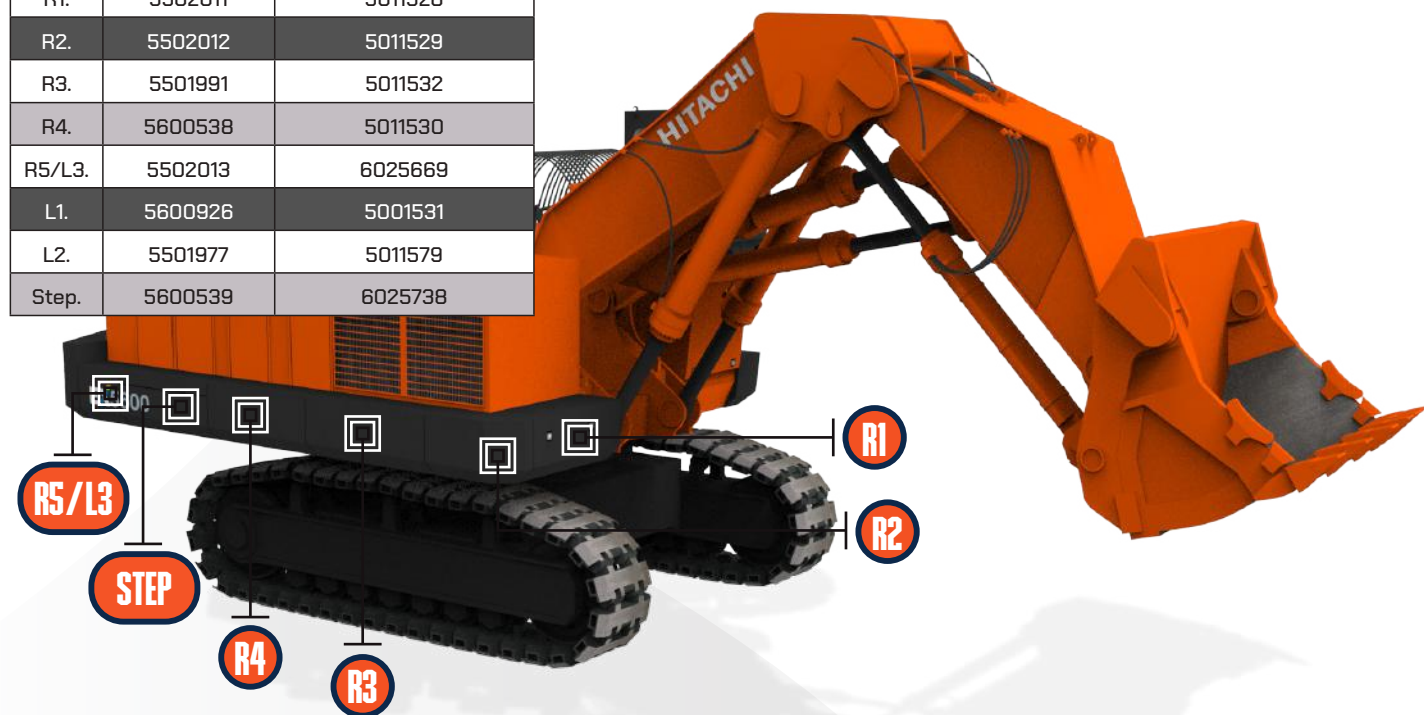


ELIMINATING DOWNTIME, MAXIMISING EFFICIENCY.



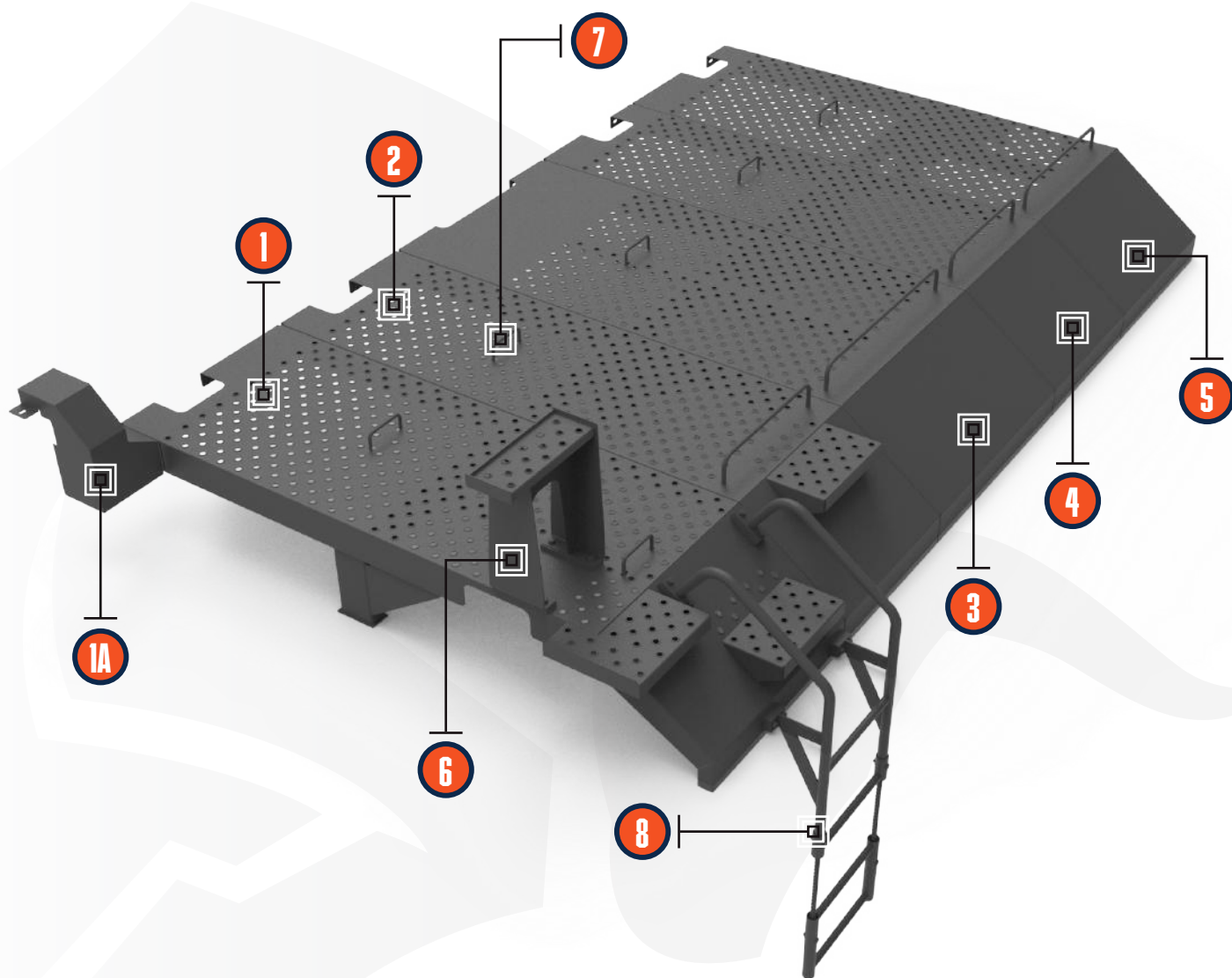
HITACHI EX5600 RHS FENDERS

Ref.	ROX Part No.	OEM Part No.
R1.	5502011	5011528
R2.	5502012	5011529
R3.	5501991	5011532
R4.	5600538	5011530
R5/L3.	5502013	6025669
L1.	5600926	5001531
L2.	5501977	5011579
Step.	5600539	6025738



HITACHI EX5600 TRAVEL MOTOR COVERS

Ref.	ROX Part No.	OEM Part No.
1.	5003000	6020598
2.	5502014	6020599
3.	5502015	6020600
4.	5502016	6020602
5.	5502017	6020601
1a.	5003007	7034686
6.	5003008	7034685
7.	5003001	4189865
8.	5003002	Step Assembly



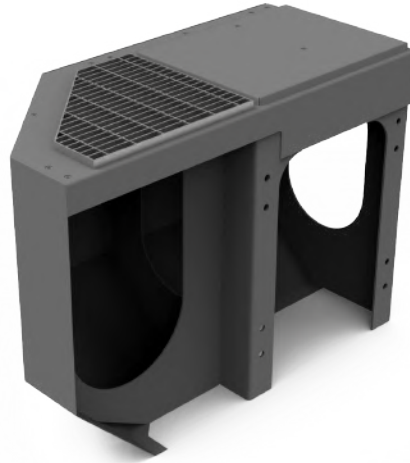


HITACHI EX5600-6 FENDER R1

Part No. 5502011

Features:

- Construction: Heavy-duty steel
- Certified and compliant with Australian Standards
- Direct replacement for OEM No. **5011528**
- Stocked and ready for immediate despatch
- Suits models EX5500-6, EX5600-6

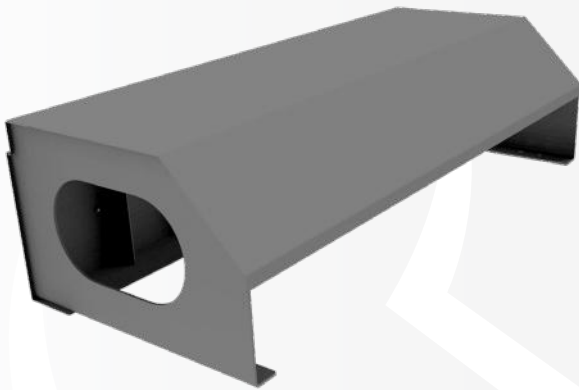


HITACHI EX5600-6 FENDER R2

Part No. 5502012

Features:

- Construction: Heavy-duty steel
- Certified and compliant with Australian Standards
- Direct replacement for OEM No. **5011529**
- Stocked and ready for immediate despatch
- Suits models EX5500-6, EX5600-6

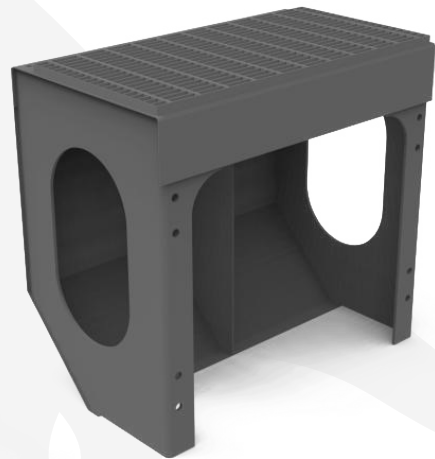


HITACHI EX5600-6 FENDER R4

Part No. 5600538

Features:

- Construction: Heavy-duty steel
- Certified and compliant with Australian Standards
- Direct replacement for OEM No. **5011530**
- Stocked and ready for immediate despatch
- Suits models EX5500-5, EX5600-6

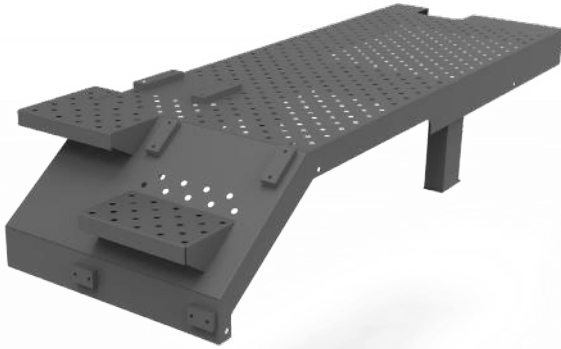


HITACHI EX5600-6 FENDER R5/L3

Part No. 5502013

Features:

- Construction: Heavy-duty steel
- Certified and compliant with Australian Standards
- Direct replacement for OEM No. **6025669**
- Stocked and ready for immediate despatch
- Suits models EX5500-5, EX5600-6



HITACHI EX5600 TRAVEL MOTOR COVER 1

Part No. 5503000

Features:

- Construction: Heavy-duty steel
- Certified and compliant with Australian Standards
- Direct replacement for OEM No. **6020598**
- Stocked and ready for immediate despatch
- Suits models EX5500-5, EX5500-6, EX5600-6



HITACHI EX5600 TRAVEL MOTOR COVER 2

Part No. 5502014

Features:

- Construction: Heavy-duty steel
- Certified and compliant with Australian Standards
- Direct replacement for OEM No. **6020599**
- Stocked and ready for immediate despatch
- Suits models EX5500-5, EX5500-6, EX5600-6

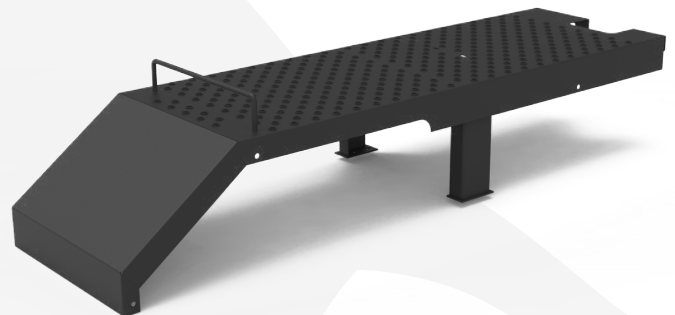


HITACHI EX5600 TRAVEL MOTOR COVER 3

Part No. 5502015

Features:

- Construction: Heavy-duty steel
- Certified and compliant with Australian Standards
- Direct replacement for OEM No. **6020600**
- Stocked and ready for immediate despatch
- Suits models EX5500-5, EX5500-6, EX5600-6



HITACHI EX5600 TRAVEL MOTOR COVER 4

Part No. 5502016

Features:

- Construction: Heavy-duty steel
- Certified and compliant with Australian Standards
- Direct replacement for OEM No. **6020602**
- Stocked and ready for immediate despatch
- Suits models EX5500-5, EX5500-6, EX5600-6

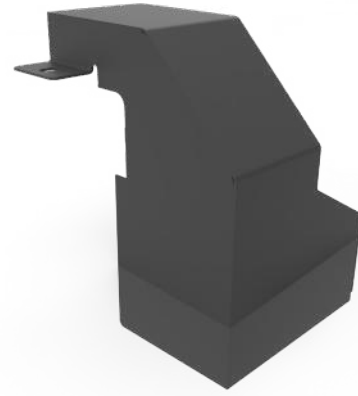


HITACHI EX5600 TRAVEL MOTOR COVER S

Part No. 5502017

Features:

- Construction: Heavy-duty steel
- Certified and compliant with Australian Standards
- Direct replacement for OEM No. 6020601
- Stocked and ready for immediate despatch
- Suits models EX5500-5, EX5500-6, EX5600-6



HITACHI EX5600-6 TRAVEL MOTOR COVER 1A

Part No. 5503007

Features:

- Heavy-duty steel construction
- Certified and compliant with Australian Standards
- Direct replacement for OEM No. 7034686
- Stocked and ready for immediate despatch

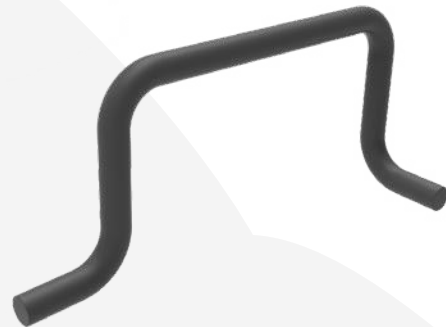


HITACHI EX5600-6 TRAVEL MOTOR COVER STEP

Part No. 5503008

Features:

- Heavy-duty steel construction
- Certified and compliant with Australian Standards
- Direct replacement for OEM No. 7034685
- Stocked and ready for immediate despatch



HITACHI EX5600-6 TRAVEL MOTOR COVER HANDLE

Part No. 5503001

Features:

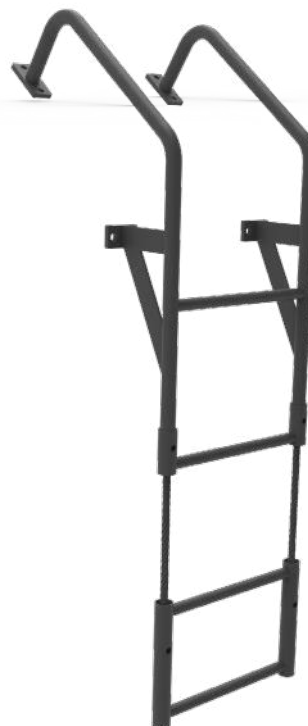
- Heavy-duty steel construction
- Certified and compliant with Australian Standards
- Direct replacement for OEM No. 4189865
- Stocked and ready for immediate despatch

HITACHI EX5600 TRAVEL MOTOR COVER STEP ASSEMBLY

Part No. 5503002

Features:

- Heavy-duty steel construction
- Certified and compliant with Australian Standards
- Stocked and ready for immediate despatch
- Suits models EX5600-5, EX5600-6



HITACHI EX5600 TRACK TENSION GAUGE

Part No.5600220

Placed on the track frame with magnets. The dangling chains are reference points which indicate when the track is sufficiently tensioned.

Features:

- Construction: Heavy-duty steel
- Magnetic

HITACHI EX5600 CYLINDER PROTECTION

Part No. 5503215

Designed to minimise damage and downtime that occurs to the hydraulic rams during operation.

Features:

- Extremely robust, flexible rock deflection
- Provides full cover to the ram with no excess weight or restriction
- Fitting components supplied
- Cost effective solution, easy to install
- Stocked and ready for despatch



HITACHI EX5600 TRAVEL MOTOR COVER FOLDING HANDRAILS

Part No. 5600176

Provides a safe working space for the top of the Hitachi EX5600 travel motor covers.

Features:

- Heavy wall steel pipe build
- Low-folding design with kick hinges
- Kickplates included

HITACHI EX8000 EXCAVATOR

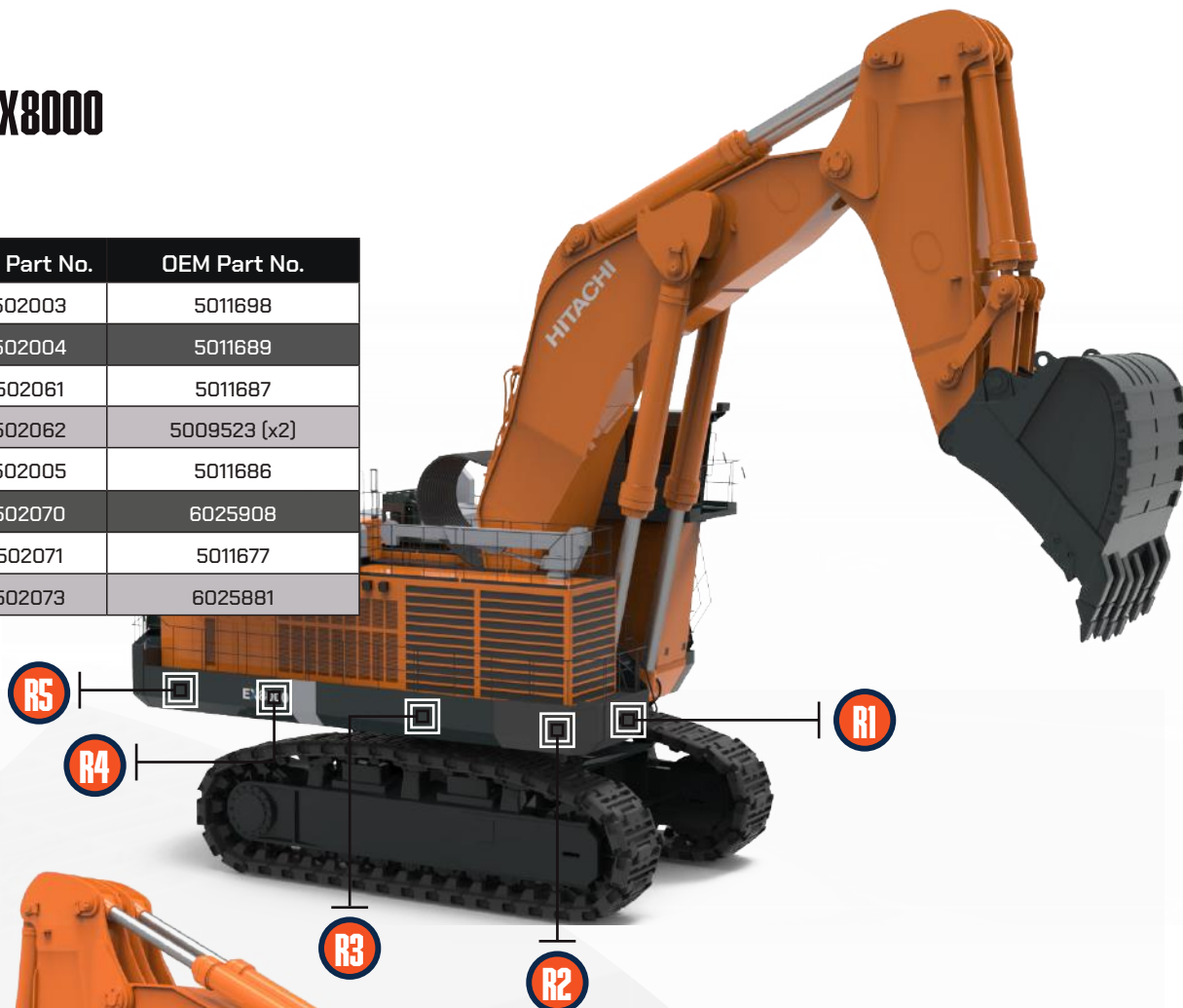


ELIMINATING DOWNTIME, MAXIMISING EFFICIENCY.



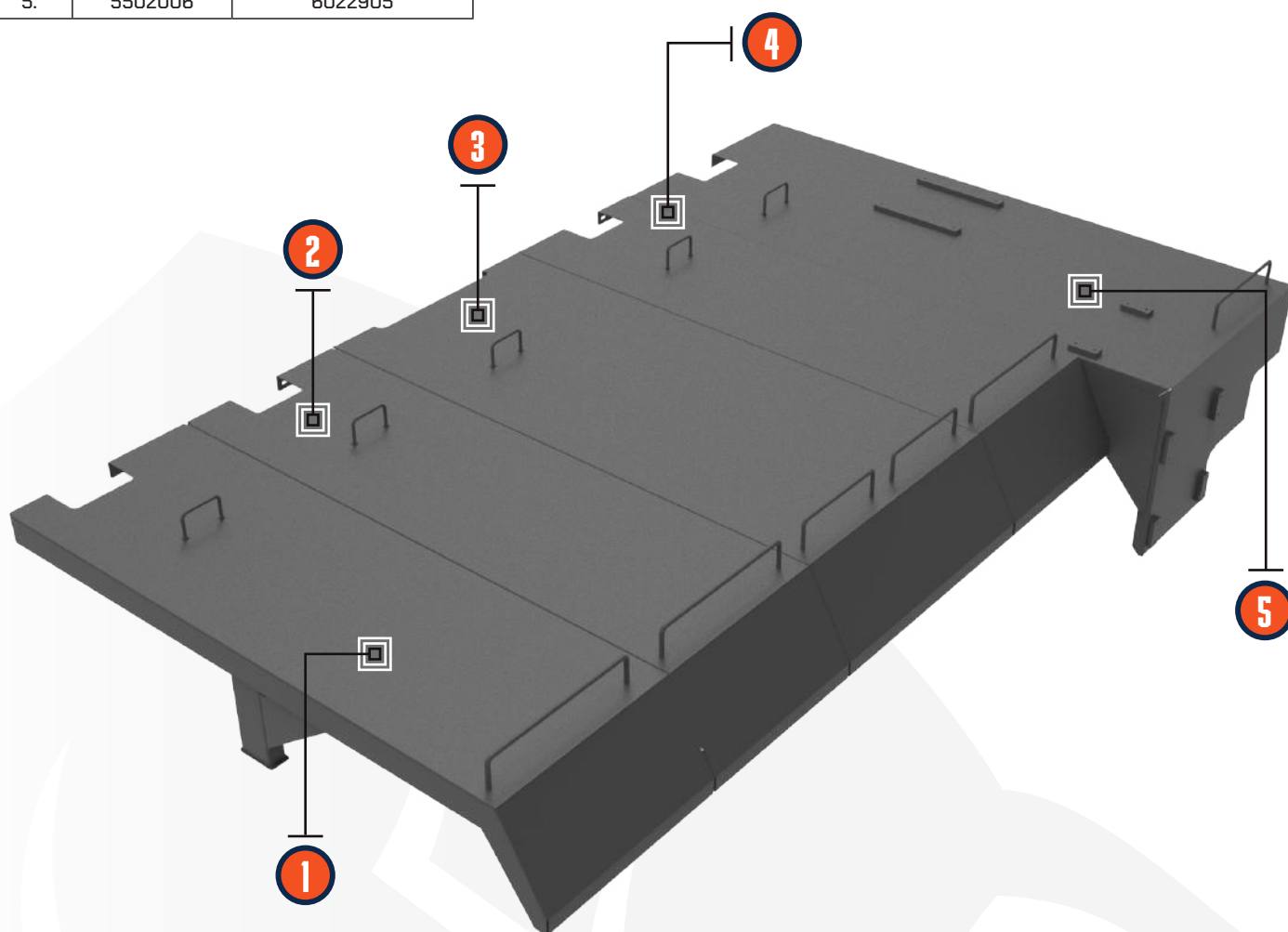
HITACHI EX8000 FENDERS

Ref.	ROX Part No.	OEM Part No.
R1.	5502003	5011698
R2.	5502004	5011689
R3.	5502061	5011687
R4.	5502062	5009523 (x2)
R5.	5502005	5011686
L1.	5502070	6025908
L2.	5502071	5011677
L3.	5502073	6025881



HITACHI EX8000 TRAVEL MOTOR COVERS

Ref.	ROX Part No.	OEM Part No.
1.	5502010	6022909
2.	5502009	6022908
3.	5502008	6022907
4.	5502007	6022906
5.	5502006	6022905





HITACHI EX8000-6 FENDER R1

Part No. 5502003

Features:

- Construction: Heavy-duty steel
- Certified and compliant with Australian Standards
- Direct replacement for OEM No. **5011698**
- Stocked and ready for immediate despatch

HITACHI EX8000-6 FENDER R2

Part No. 5502004

Features:

- Construction: Heavy-duty steel
- Certified and compliant with Australian Standards
- Direct replacement for OEM No. **5011689**
- Stocked and ready for immediate despatch



HITACHI EX8000-6 FENDER R5

Part No. 5502005

Features:

- Construction: Heavy-duty steel
- Certified and compliant with Australian Standards
- Direct replacement for OEM No. **5011686**
- Stocked and ready for immediate despatch

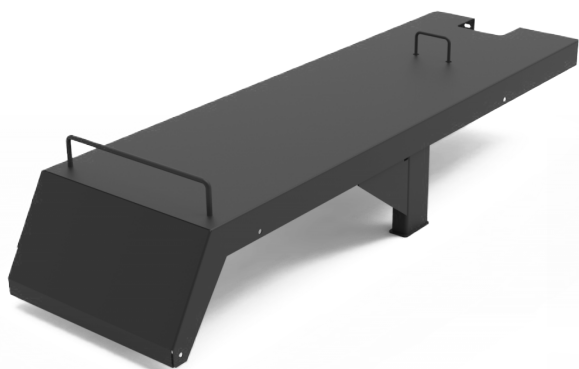


HITACHI EX8000 TRAVEL MOTOR COVER 1

Part No. 5502010

Features:

- Construction: Heavy-duty steel
- Certified and compliant with Australian Standards
- Direct replacement for OEM No. **6022909**
- Stocked and ready for immediate despatch

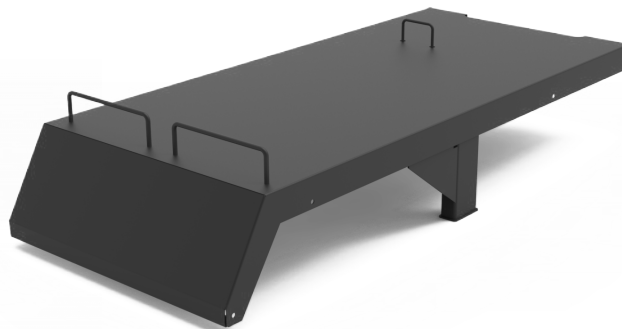


HITACHI EX8000 TRAVEL MOTOR COVER 2

Part No. 5502009

Features:

- Construction: Heavy-duty steel
- Certified and compliant with Australian Standards
- Direct replacement for OEM No. 6022908
- Stocked and ready for immediate despatch

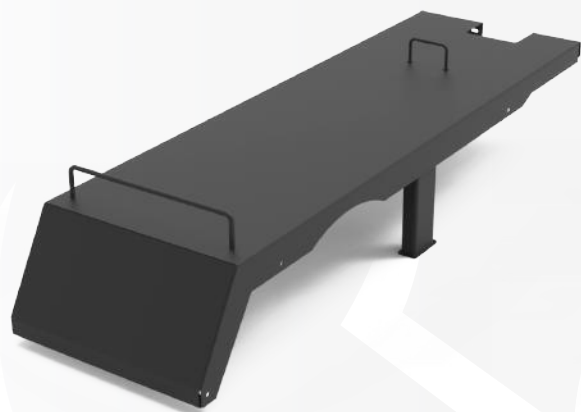


HITACHI EX8000 TRAVEL MOTOR COVER 3

Part No. 5502008

Features:

- Construction: Heavy-duty steel
- Certified and compliant with Australian Standards
- Direct replacement for OEM No. 6022907
- Stocked and ready for immediate despatch

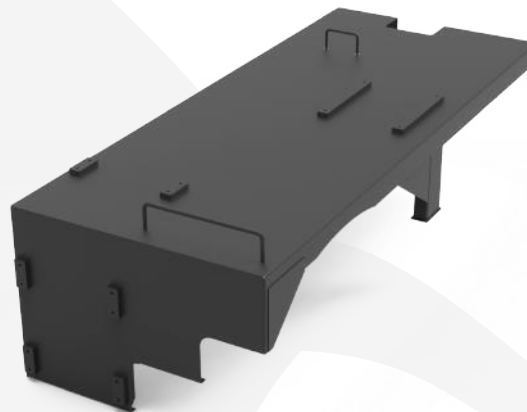


HITACHI EX8000 TRAVEL MOTOR COVER 4

Part No. 5502007

Features:

- Construction: Heavy-duty steel
- Certified and compliant with Australian Standards
- Direct replacement for OEM No. 6022906
- Stocked and ready for immediate despatch



HITACHI EX8000 TRAVEL MOTOR COVER 5

Part No. 5502006

Features:

- Construction: Heavy-duty steel
- Certified and compliant with Australian Standards
- Direct replacement for OEM No. 6022905
- Stocked and ready for immediate despatch

**EPIROC
D65 SURFACE DRILL**

ELIMINATING DOWNTIME, MAXIMISING EFFICIENCY.



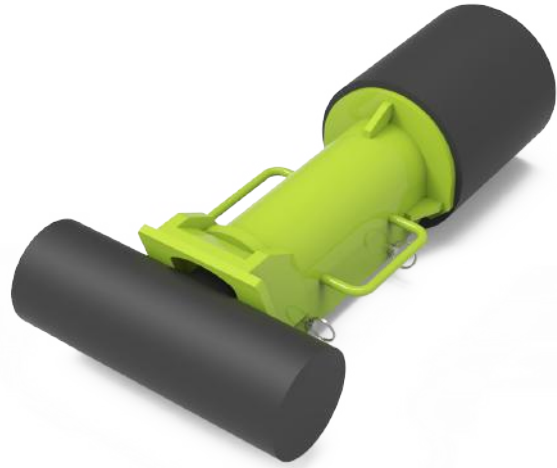
EPIROC D65 DRILL BOOM RAISE RAM CLAMP

Part No. 5503365

Clamps to the boom raise cylinder when extended for extra safety during maintenance.

Features:

- Heavy-duty steel construction
- WLL: 30T
- Lifting handles
- Manual handling weights of 14kg max
- Quick and easy installation



EPIROC D65 DRILL REAR JACK STAND CLAMP

Part No. 5503499

Clamps to the rear jackstand when extended for extra safety during maintenance. Set included 2x clamps which stack on top of each other.

Features:

- Heavy-duty steel construction
- WLL: 30T
- Easy to install and lock into place
- Load rated handles for hoist install
- Hinges and pin locking system

EPIROC D65 CLAMP STORAGE TOOLBOX

Part No. 5504044

An engineered and certified toolbox for safe and efficient storage of Epiroc D65 clamps.

Features:

- Construction: Heavy-duty steel
- 500mm height
- Holds 3 x Rear Jackstand Clamps (5503499) and 1 x Boom Raise Clamp (5503365)
- Gas struts for lid
- Key lock with T handles
- Heavy-duty hydrocarbon resistant foam cut out
- Each tool has a specifically CNC routed cutout
- Fitted with forklift slots



KOMATSU MACHINE RANGE

ELIMINATING DOWNTIME, MAXIMISING EFFICIENCY.



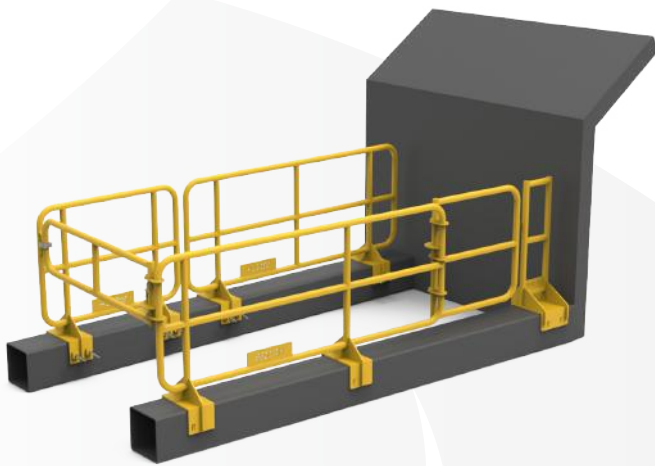
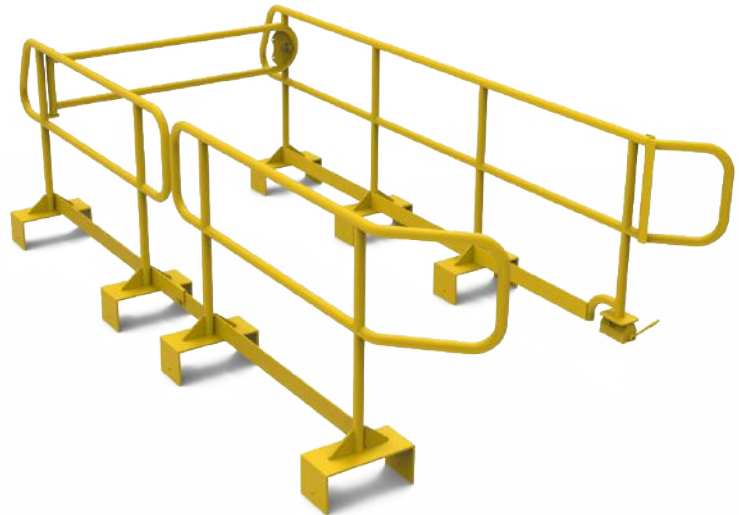
KOMATSU 830E CHASSIS HANDRAIL

Part No. 5500483

Handrails bolt to the chassis to provide safety while working in the chassis area.

Features:

- Lightweight, yet heavy-duty aluminium construction
- Clamps to chassis via hand bolts
- Set includes 4 assemblies
- Finished in Y-14 Safety Yellow



KOMATSU 930E-4 CHASSIS HANDRAIL SET

Part No. 5501069

Handrails bolt to the chassis to provide safety while working in the chassis area.

Features:

- Lightweight, yet heavy-duty aluminium construction
- Clamps to chassis via hand bolts
- Set includes 4 assemblies
- Finished in Y-14 Safety Yellow

KOMATSU 930E CHASSIS HANDRAIL STORAGE STAND

Part No. 5501184

An engineered and certified stand designed to store a set of our chassis handrails (5501069).

Features:

- Heavy-duty steel construction
- Fitted with forklift slots
- Finished in Y-14 Safety Yellow
- Laser cut ID plate attached to top of lid
- Specific signage and stickers available on request



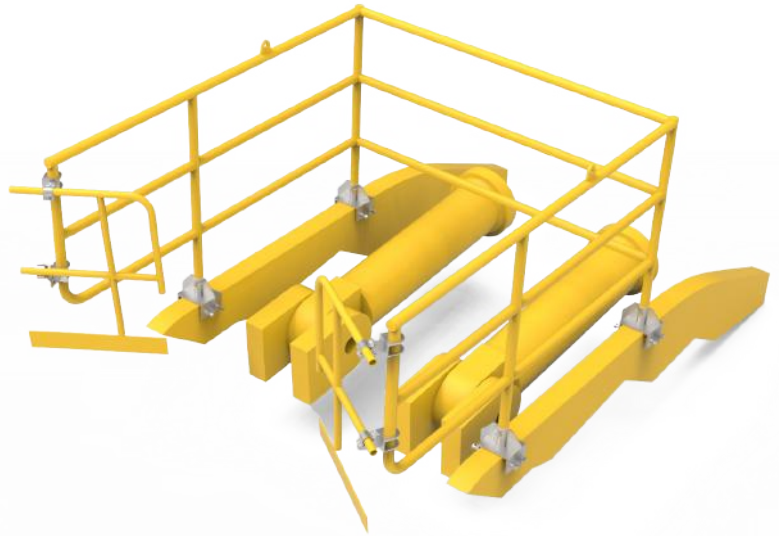
LOADER BOOM FALL PROTECTION

Part No. 5503681

Handrails which clamp to the lift arms of a CAT 994 or Komatsu WA1200 loader for enhanced safety.

Features:

- Lightweight aluminium handrails
- Heavy-duty steel clamps
- Clamps to lift arms with hand bolts (provided)
- Fitted with lifting points for ease of installment
- Finished in Y-14 Safety Yellow



KOMATSU WA1200 ACCESS AND PROTECTION

Part No. 5501654

Engineered and certified handrails designed to provide safety during maintenance.

Features:

- Lightweight, yet heavy duty aluminium construction
- Steel threaded blocks supplied to be welded to chassis
- Removable handrails
- Self-closing gate
- Non-slip yellow tread nosing on all rungs



ROX

BUILT BETTER 



WEEKLY INSIGHTS INTO ALL THINGS MINING,
BEYOND & THE PERSONALITIES BEHIND THE BRAND.

BREAKING
ROX 

    @breakingroxpodcast

Breaking ROX Podcast is dedicated to the ROX Mining Parts brand of the Bend-tech Group.

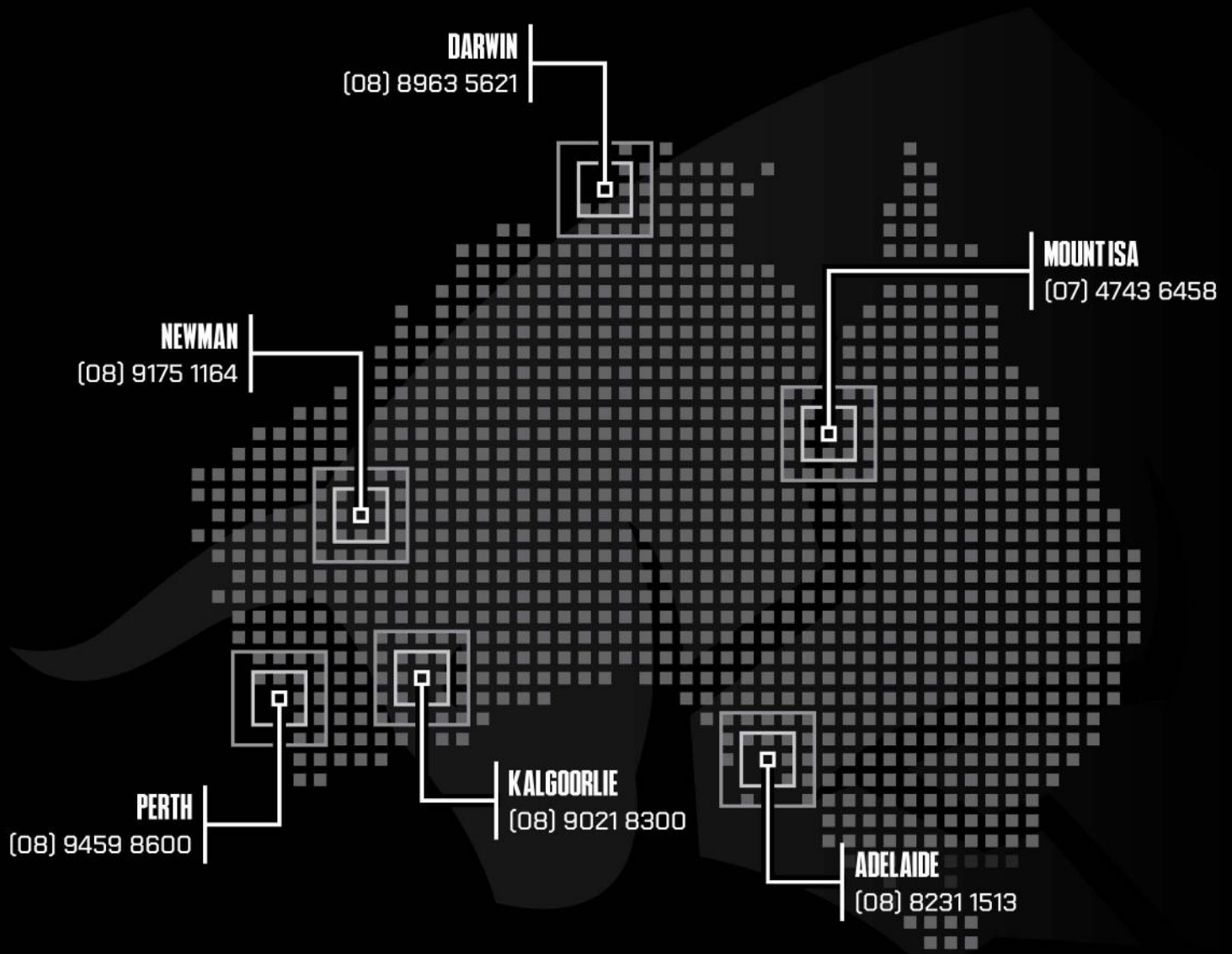
We discuss all things mining, safety, efficiency, downtime and aim to discuss wider related subjects with our guests. We want to dive into thought leadership and give perspective into the issues we see and solve in the mining space.

ELIMINATING DOWNTIME, MAXIMISING EFFICIENCY.

ROX 



ELIMINATING DOWNTIME, MAXIMISING EFFICIENCY.



✉ sales@bendtechgroup.com.au

🌐 bendtechgroup.com.au



OPEN CUT | UNDERGROUND | A DIVISION OF **Bendtech**