

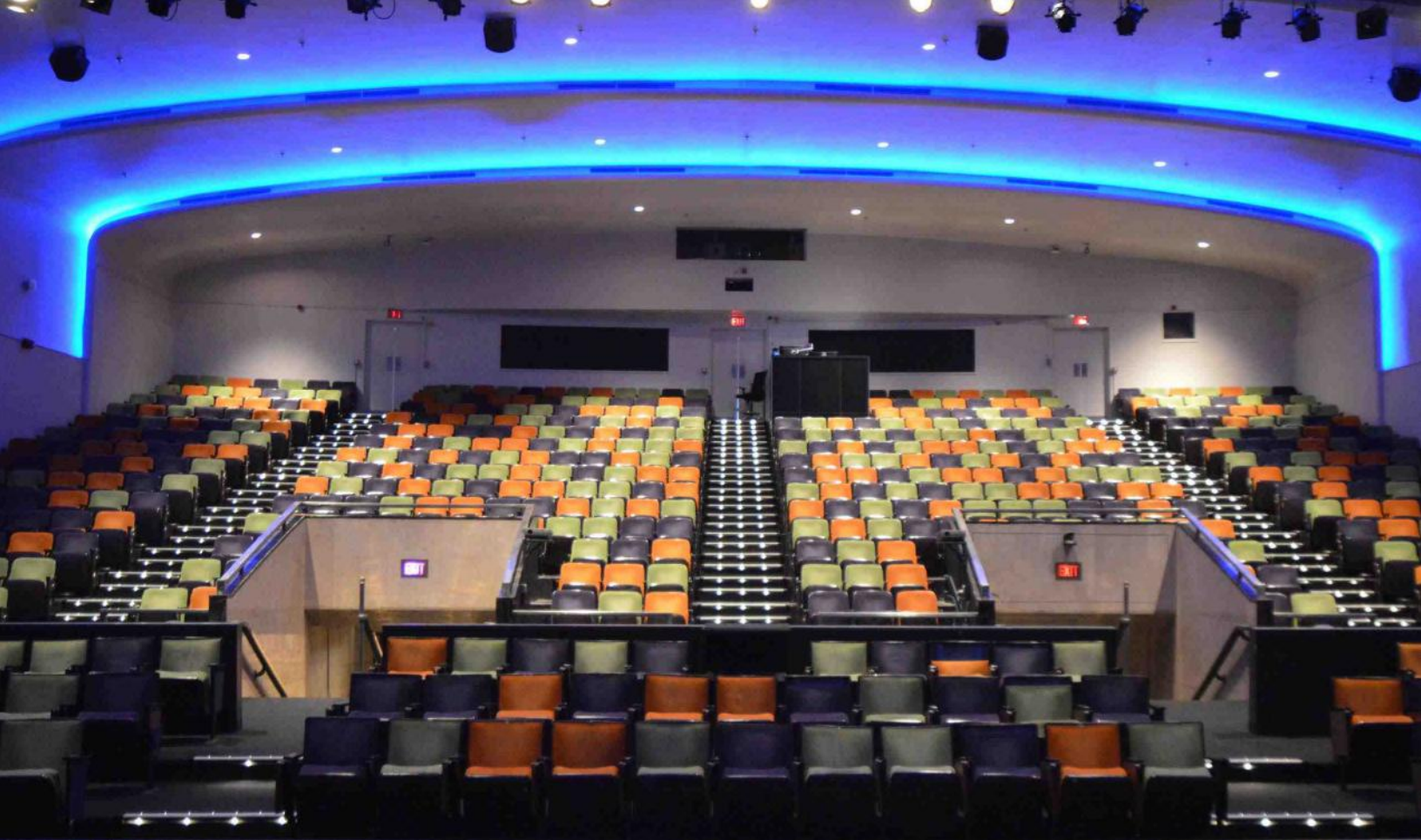
CAMPUS CONFERENCE &
EVENT SERVICES

Experience Events @ RISD

2026 *Guide*



401-427-3100 | conference@risd.edu | risdeventservices.com



EVENT SPACES

@

RISD

| | |
|--------------|----|
| OUR TEAM | 3 |
| PRICING | 4 |
| FEAT. SPACES | 5 |
| RESIDENTIAL | 11 |
| SERVICES | 12 |
| VENDORS | 14 |



Our Team

Rhode Island School of Design helps make Providence one of the most culturally active and creative cities in the region. Our meeting and event spaces create an exciting destination to draw inspiration from the world of art and design. We have a variety of locations, spaces, and resources to accommodate your needs, from week-long conferences to intimate social engagements.

Our mission is to elevate your next meeting or event by providing vision, direction, coordination, and the perfect venue. The Campus Conference and Event Services team is ready to find you the right space and seamlessly coordinate your event. We take care of all the little details to ensure your event runs smoothly and your guests have a memorable experience.



Pricing

| Rental Type | Space/Venue | Capacity | Half-Day Rate | Full Day | Hourly Add-On |
|---------------|--------------------------------------|----------|---------------|----------|---------------|
| Tier 1 | 20 Washington Place Auditorium | 150 | \$1,500 | \$2,500 | \$600 |
| | 20 Washington Place Lobby | 300 | | | |
| | Fleet Library Main Reading Room | 80 | | | |
| | RISD Auditorium | 550 | | | |
| | Tillinghast Place | 250+ | | | |
| Tier 2 | Farnum Park | 100 | \$1,000 | \$1,750 | \$400 |
| | Illustration Gallery | 50 | | | |
| | Tap Room, Memorial Hall 401 | 50 | | | |
| | Met Refectory, Room A | 60 | | | |
| Tier 3 | College Building Classrooms | 30-40 | \$500 | \$750 | \$200 |
| | 20 Washington Place Conference Rooms | 10-20 | | | |
| | Ewing House Meeting Room | 15 | | | |
| | Market House Conference Room | 20 | | | |



Tier 1 Featured Locations

20 Washington Place Auditorium + Lobby



| | Capacity | Features |
|-------------------|----------|--|
| Auditorium | 170 | AV, ADA access, flexible use, Zoom setup |
| Lobby | 200 | |

RISD Auditorium Theatre Style Auditorium



| | Capacity | Features |
|-------------------|----------|--------------------------|
| Auditorium | 550 | Fixed seating, stage, AV |

Tillinghast Place Lawn + Beach



| | Capacity | Features |
|-------------|----------|------------------------------------|
| Lawn | 250 | Outdoor venue, tents, flexible use |

Tier 2 Featured Locations

Memorial Hall Taproom



| | Capacity | Features |
|----------------|----------|------------------|
| Taproom | 75 | Flexible use, AV |

Gallery Illustration Studies Building



| | Capacity | Features |
|----------------|----------|---------------------------|
| Gallery | 75 | Easy access, flexible use |

Met A Conference Space



| | Capacity | Features |
|-------------------------|----------|----------------------|
| Conference Space | 60 | Unique, flexible use |

Tier 3 Featured Locations ⁷

Conference Rooms

Capacity

Features

10-20

AV, ADA access



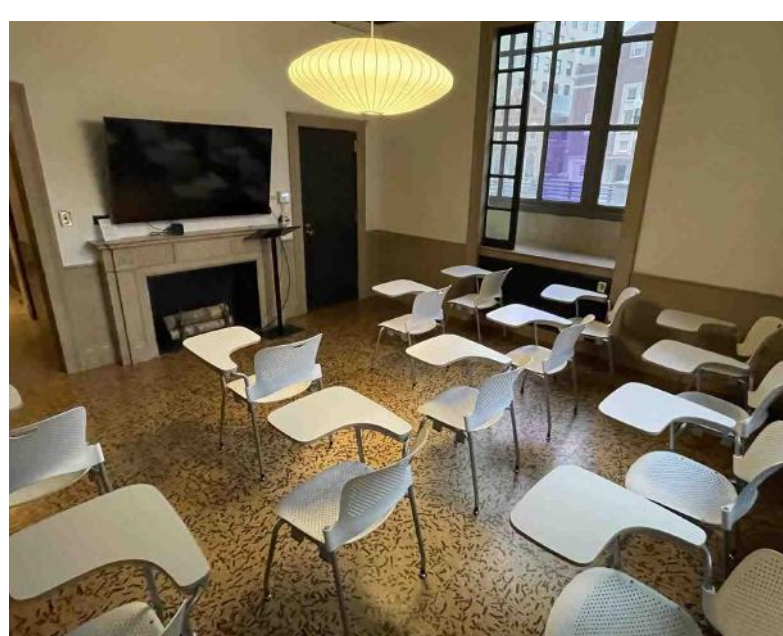
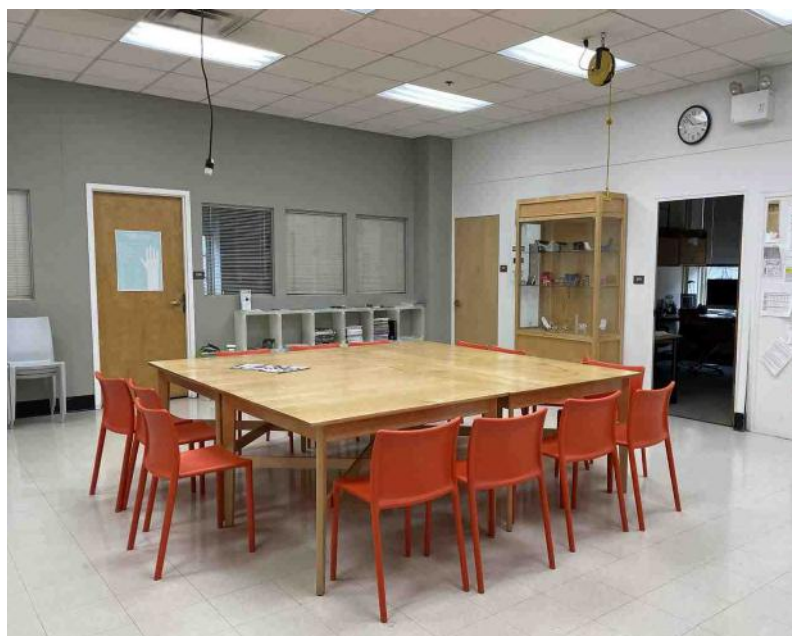
Classrooms

Capacity

Features

20+

AV, ADA access



Special Locations:

RISD MUSEUM

Centrally located in the heart of Downtown Providence, the RISD Museum is known for its vast collection of works of art from around the world, dating from ancient times to today. From an elegant and sprawling gallery to an intimate meeting room to a state of the art auditorium, the RISD Museum offers spectacular spaces for events of all shapes and sizes.

Pricing

| Rental Type | Space/Venue | Capacity | Half-Day Rate | Full Day | Hourly Add-On |
|----------------|--------------------|----------|---------------|----------|---------------|
| Premium | Grand Gallery | 200 | \$3,000 | \$5,000 | \$800 |
| Tier 1 | Metcalf Auditorium | 212 | \$1,500 | \$2,500 | \$600 |
| | Chace Lobby | 200 | | | |
| | Cafe Pearl | 75 | | | |
| Tier 2 | Danforth Hall | 60 | \$1,000 | \$1,750 | \$400 |
| | Radeke Garden | 75 | | | |

Premium Grand Gallery

9

Grand Gallery

Reception/Dinner Space

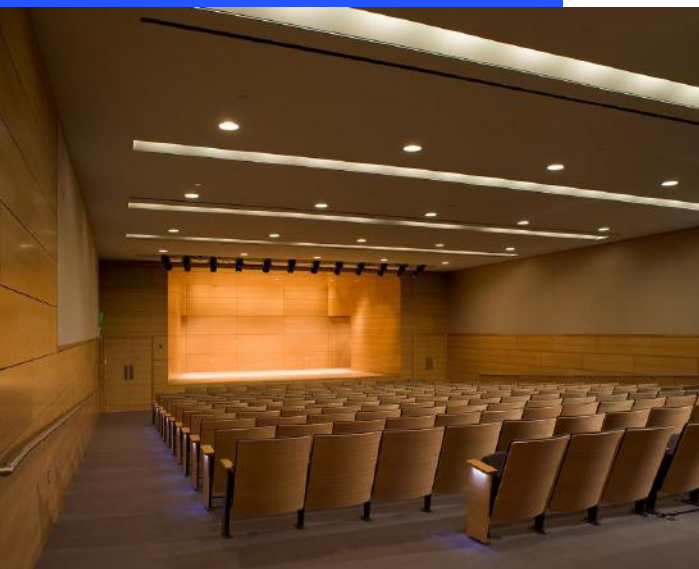


| | Capacity | Features |
|-----------|----------|--------------------------|
| Reception | 200 | flexible use, ADA access |

Tier 1 Museum Locations

Metcalf Auditorium

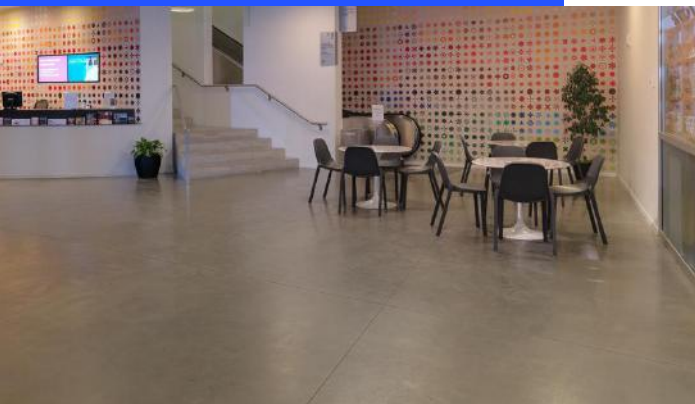
Theatre Style Auditorium



| | Capacity | Features |
|------------|----------|-------------------------------------|
| Auditorium | 212 | Theatre-style seating, AV equipment |

Chace Lobby

Reception Space



| | Capacity | Features |
|-------|----------|--------------------------|
| Lobby | 200 | ADA access, flexible use |

Tier 1 Museum Locations

Cafe Pearl Reception/Dinner Space



| | Capacity | Features |
|------------|----------|--------------------------|
| Lobby/Cafe | 75 | flexible use, ADA access |

Tier 2 Museum Locations

Danforth Hall Reception Space



| | Capacity | Features |
|-----------|----------|------------------------------|
| Reception | 60 | AV, flexible use, ADA access |

Radeke Garden Reception Space



| | Capacity | Features |
|-----------|----------|--------------------------|
| Reception | 75 | flexible use, ADA access |

Residential Housing Rentals ¹¹

Hill Houses



Features

- \$60 per person/ night
 - Houses range in size from 19-32 beds.
 - Rates do not include bed and bath linen but they are available at \$25 per person.
 - Secure 24/7 card access.
 - Public Safety present by foot, bicycle, and marked cruisers
 - 10% administrative fee on total charges.
-

15 Westminster



- \$70 per Person/ Night
 - Free Campus wifi
 - Air Conditioning
 - Full Kitchen
 - Oven & Cooktop
 - Full Size Refrigerator
 - Shared Living Room
 - Half Bath & Shower Room
 - Desk & Chair
 - Wardrobe
 - Extra Long Twin Bed
-

15 Fremont Ave



- Seaside Home with Beach Access
- 4 Bedroom, 2 Bathroom, Sleeps 10
- Off-Street Parking
- Full Kitchen
- Wifi and Television
- Full Heating/Cooling
- Upper/Lower Deck, Patio Space

[Book on AirBnb Here!](#)



Half Day Rentals:

Up to **5** hours of space access including setup and breakdown.

Full Day Rentals:

Up to **9** hours of space access, including setup and breakdown.

- Non-Profit Discount: **25%** off room rental rates.
- A **10%** Administrative Fee will be added to the final invoice on all rates, services & fees.

ADD ONS - *All add ons are dependent on availability.*

- **Museum Tour**

\$25/person

One hour guided tour by a museum educator

- **Backstage Tour**

\$20/person

One hour tour through RISD studios, galleries and historical spaces.

- **Registration Services**

\$250

Two hours of registration services to check in or check out your guests.

Available Campus Services

13

- Catering

RISD Caters is a full service catering company that specializes in locally sourced menus inspired by the season.

- Audio & Visual Needs

Media Services offers specialized support for events and conferences, providing equipment and on-site support for everything from simple presentations to live streaming.

- Safety & Security

Public Safety has officers on campus 24/7 to assist with any emergency situations that may arise and will work to keep your event safe and secure.

- Wifi

There is free wifi available across the campus to be used by your group!

- Custom Layouts

RISD can provide you with a custom layout to best suit your event needs, with tables and chairs for events held indoors.



RISD PREFERRED PARTNERS - APPROVED VENDORS

The following vendors have been pre-approved to work events at RISD Venues

APPROVED CATERERS

risd•caters
ARTISAN EVENTS

Russell Morin
CATERING & EVENTS

 **Easy Entertaining**
Preserving Local Flavor Since 2006



MORE
THAN A MEAL

RESTROOMS

 **Hallman's**
SEPTIC AND PORTABLE TOILETS, LLC
401-847-9544

C&S Portable Restrooms

FLORISTS

Grace Kim
FLORAL DESIGN



PHOTOGRAPHERS

Jennifer Nichole
PHOTOGRAPHY
ESTD 2020



JULIE K. GRAY
PHOTOGRAPHY

DJs

 **ARPEGGIO**
WEDDING ENTERTAINMENT
DJS | LIGHTING | PHOTO BOOTHS

WRICK
Entertainment

AV & EVENT PRODUCTION

 **ATR Treehouse**
Combining Technology & Art

 **NESP**
Audio/Visual & Event Production

LIVE MUSIC

 **BIG LUX**