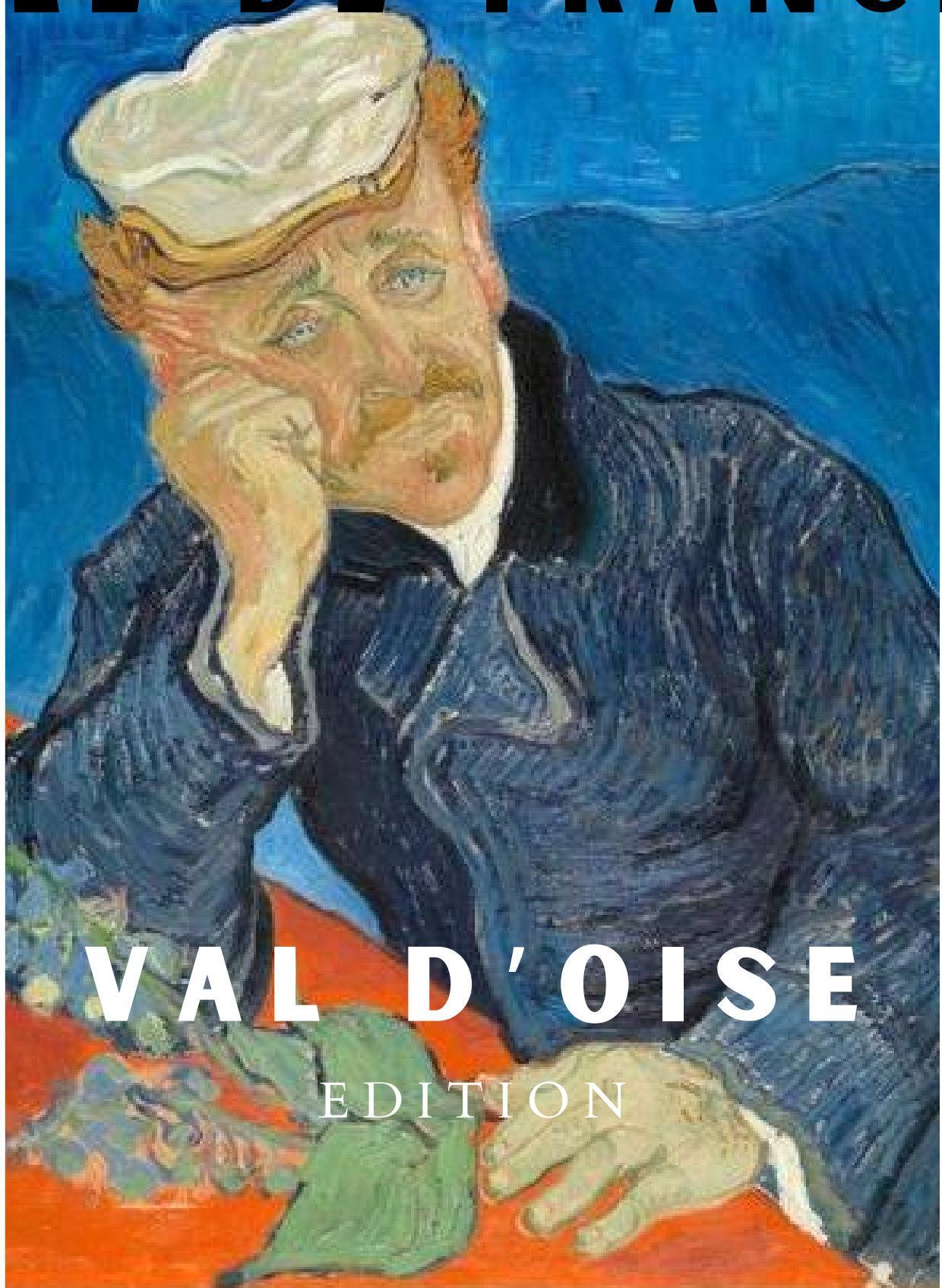


DON'T MISS ANYTHING ABOUT
ÎLE-DE-FRANCE

DISCOVER THE REGION THROUGH ITS 8 DEPARTMENTS



VAL D'OISE
EDITION

Portrait du docteur Gachet
(Vincent Van Gogh, 1890)

ENGLISH VERSION

ÉDITORIAL

Students in the fourth year of Biotechnology and Chemistry at the CYTech engineering school in Cergy, we spent several months to realize our project: the creation of a series of magazines highlighting the cultural and tourist heritage of the Île-de-France region. In total, we created 8 magazines, each corresponding to a department of this region.

Aware of the challenges involved in discovering such a rich territory, we have undertaken this project to promote our region during our student mobility in Italy. The magazines "Don't miss anything about Île-de-France" have the objective of listing the must-see sites of each department, while highlighting lesser known but equally interesting places to explore. Of course, this selection is not exhaustive!

This edition focuses on the department of Val d'Oise. As far as possible, **you will find the website of each place and its access on Google Maps by hovering over its title and address respectively.**

To find out more about the other departments of the region, we invite you to go to the last page of this magazine: you will find a list of all available magazines, as well as a link to our website and Instagram account.

Enjoy your reading!

Jordane & Lucas



| | | |
|-----------|--|-------|
| 01 | VAL D'OISE HISTORY & GEOGRAPHY | p. 2 |
| 02 | VAL D'OISE MAP | p. 3 |
| 03 | MUST-SEE | p. 5 |
| | Auvers-sur-Oise: in the footsteps of the Impressionists | p. 6 |
| | L'Isle-Adam: a pearl of well-being and tranquility | p. 15 |
| | Cergy-Pontoise: multiculturalism and monumental art | p. 19 |
| | Montmorency: between calm and serenity | p. 27 |
| | Engghien-les-Bains: charm and luxury in the French style | p. 33 |
| | La Roche-Guyon: the "most beautiful village in France" | p. 37 |
| | Villardeaux: historical domain | p. 39 |
| | Royaumont Abbey | p. 41 |
| | Ecouen and its castle: a monument of the Renaissance | p. 43 |
| 04 | MONUMENTS TO SEE | p. 45 |
| | Maubuisson Abbey | p. 46 |
| | Park of the castle of Méry-sur-Oise | p. 47 |
| | Guiry-en-Vexin Castle | p. 47 |
| | Castle of Ambleville | p. 48 |
| 05 | MUSEUMS NOT TO MISS | p. 51 |
| | Impressionist House Claude Monet | p. 52 |
| | François Mauriac Museum | p. 54 |
| | House of Arts and Crafts of the Vine | p. 54 |
| | Museum of the Vexin français | p. 55 |
| | Museum of the tool | p. 55 |
| | The Moisson Museum | p. 56 |
| | The Archaeological Museum of Val d'Oise | p. 56 |
| | Naval Museum | p. 57 |
| | Moulin de la Naze (Meunerie House) | p. 57 |
| | Museum of Steam Trams and French Secondary Railways (MSTS) | p. 58 |
| | Department museum of the fire brigade of the Val d'Oise | p. 58 |

VAL D'OISE



HISTORY & GEOGRAPHY

Throughout the ages, the territory of the Val d'Oise has been a crucial crossroads, from the famous «Chaussée de César» to contemporary exchanges between the Paris region and Europe. Its history is closely linked to that of France and its capital. Officially created in 1964, the Val d'Oise became an autonomous department in 1967, marking the beginning of its history as a separate administrative entity.

The launch of Cergy-Pontoise (1969), the Roissy Charles de Gaulle airport (1974), and decentralization laws (1982) shaped the identity of the Val d'Oise.



Although the Val d'Oise has no official flag, it does have an official coat of arms and logo. The coat of arms is described as follows: "of heads with a silver-waved bar accompanied by a golden eagle in chief and an anchored cross of the same in point, to the border of azure loaded with ten flowers of golden lilies."

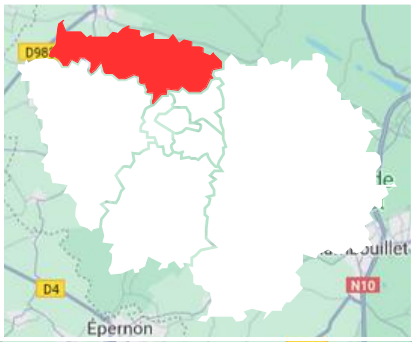
The department, which covers an area of 1,246 km², is the least extensive department in the Grand Crown. However, it is one of the most densely populated departments in France, with 1,200,000 inhabitants (twice as many as in 1962) spread over 185 municipalities.

The Oise flows through the department of Val d'Oise from north to south, giving it its name. This territory is characterized by vast plateaus interspersed with water courses, including the French Vexin, the Parisis and the Plain of France, The three main natural regions of the department are the French Polynesia.



VAL D'OISE

MAP



Parc naturel régional de la Haute Vallée de Chevreuse

MUST-SEE



MUST-SEE



Auvers-sur-Oise: in the footsteps of the Impressionists

Less than an hour from the capital, Auvers-sur-Oise owes its international fame to landscape painters and impressionists such as Charles-François Daubigny, Paul Cézanne, Camille Corot, Camille Pissarro and Vincent Van Gogh, who came here to draw their inspiration.

Castle of Auvers-sur-Oise

The Castle of Auvers reveals a history of landscape painting and invites to an impressionist experience. In the heart of a park of 8 hectares, a regular garden «à la française» unfolds at the foot of the castle.

Open from Tuesday to Sunday from 9am to 7pm from 01/04 to 30/10 and from 9am to 6:30pm from 01/11 to 31/03.

Free access.



Rue de Léry
95430 Auvers-sur-Oise
+33 (0)1 34 48 48 54
parcetjardin@chateau-auvers.fr

Auvers-sur-Oise Cemetery

Passing through the tombs of the brothers Vincent and Théodore Van Gogh, but also those of other artists such as Emile Boggio, Léonide Bourges, Douglas Jones, Norbert Geoneutte and many others; Reproductions of paintings painted on site are also present in the cemetery, located near the *Champ de blé aux corbeaux*.

Open every day from 10am to 7:30pm.

Free access.

Avenue du Cimetière
95430 Auvers-sur-Oise
+33 (0)1 30 36 70 30



Champ de blé aux corbeaux
(Vincent Van Gogh, 1890)

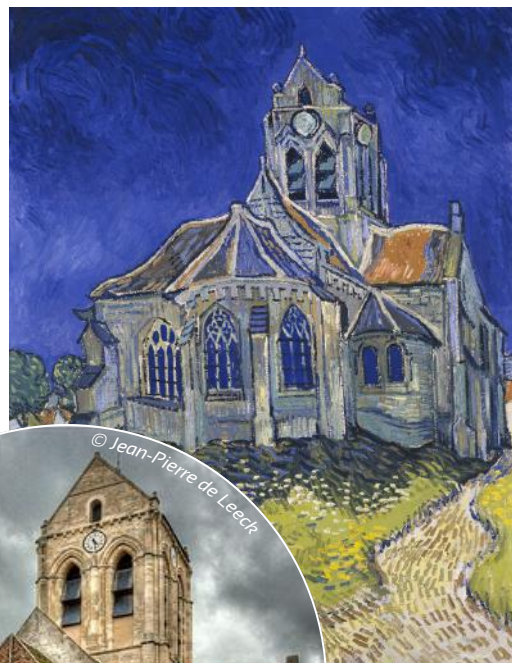
Notre-Dame d'Auvers-sur-Oise Church

Dominating the city, the church of Auvers-sur-Oise acquired a worldwide reputation thanks to the eponymous painting by Vincent Van Gogh in 1890.

This parish church was built towards the end of the 11th century by Philip 1st and has survived through the centuries without suffering damage during wars.

Open every day from 9:30am to 7pm.

Free admission.



L'église d'Auvers-sur-Oise
(Vincent Van Gogh, 1890)

Place de l'Eglise
95430 Auvers-sur-Oise
+33 (0)1 30 36 71 19

Van Gogh's house: the Auberge Ravoux

The Auberge Ravoux was the last home of Vincent Van Gogh, who stayed there from 20 May 1890 until his suicide on 29 July 1890.

He was housed for 3.50 francs a day in room 5. By superstition, the "suicide room" was never re-opened again. This site, classified Historic Monument, is therefore today the only house where the painter lived, preserved in its original state.

The inn is still a place of life: today as in 1890, the dining room welcomes guests from all over the world in the warm atmosphere of the cafés of artists of yesteryear.

Open from 06/03 to 24/11 from Wednesday to Sunday from 10am to 6pm.
Visit of the House of Van Gogh and meals at the Auberge Ravoux **on reservation**.

Full price: 10 €. Reduced price: 8 € (students and people with disabilities).
Child rate (12 to 17 years old): 8 €. Free for children under 12.



L'Auberge Ravoux
(1890)



Tablette commémorative installée sur
la Maison de Van Gogh

52-56 rue du Général de Gaulle
95430 Auvers-sur-Oise
+33 (0)1 30 36 60 60



*UNUSUAL FACTS ABOUT
VINCENT VAN GOGH*

Mentally unstable, suffering from overwork, lack of sleep, anxiety and malnutrition. His excessive consumption of wine and absinthe accentuates bipolar disorder

After a conflict with his colleague and friend Gauguin in December 1888, he cut off his left ear. This marked the reversal of his mental state.

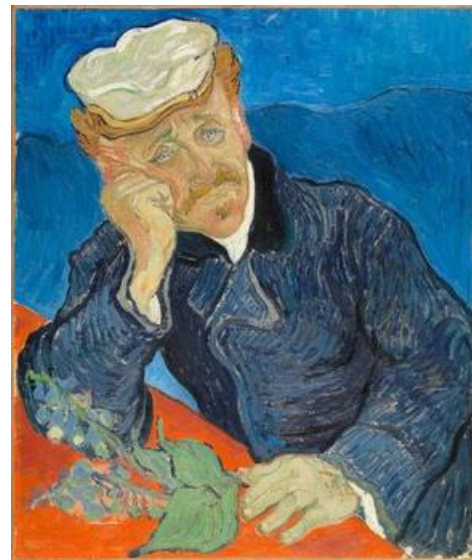
Although he worked for only 10 years, he produced more than 900 paintings and many more drawings and sketches. This corresponds to one new work every 36 hours!

LES SAVIEZ-VOUS ?

House of Dr. Gachet

Listed as an Historic Monument and labelled "Maison des Illustres", the House of Doctor Gachet houses a collection of paintings and engravings made by the doctor.

The house that Paul Gachet acquired in 1872 was the scene of creative exchanges between Cézanne, Pissarro and Guillaumin. The quartet explored the surrounding area to practice oil painting, pastel, drawing and etching. The traces of Vincent van Gogh's passage are also present and sensitive.



Portrait du docteur Gachet
(Vincent Van Gogh, 1890)

Open from Wednesday to Sunday from 10:30am to 6:30pm in high season (from 27/03 to 03/11) and Thursdays, Saturdays and Sundays from 10:30am to 6pm in low season.

78 rue Gachet
95430 Auvers-sur-Oise
+33 (0)1 30 36 81 27
maison.gachet@valdoise.fr

Full price: 3€. Discover all the reduced rates and free conditions [here](#).

House-Workshop of Daubigny

Classified as a Historic Monument and labelled «Maison des Illustres», the house was built in 1861 at the request of Charles François Daubigny: the first artistic center of Auvers-sur-Oise comes to life.

In the house you can discover many paintings executed on the walls by Daubigny, Corot, Daumier, Oudinot, etc. They cover about 200m² of the walls of the house.

Open from 01/04 to 29/10, weekends from 10:30am to 12:30pm and from 14h to 6:30pm.

Full price: 6€. Access the reduced rates and free conditions [here](#).



61 rue Daubigny
95430 Auvers-sur-Oise
+33 (0) 1 34 48 03 03
info@atelier-daubigny.com

AUVERS-SUR-OISE

FESTIVAL

The Festival of Auvers-sur-Oise is one of the most prestigious music festivals in Europe. He uses in music the spirit that was, in painting, that of the impressionists.

Baroque, classical, romantic, lyrical or contemporary: all different temperaments in places full of history.

From 29/03 to 19/09.

Programming and rates



Ticketing



© @fannygabriel_photos



Daubigny Museum

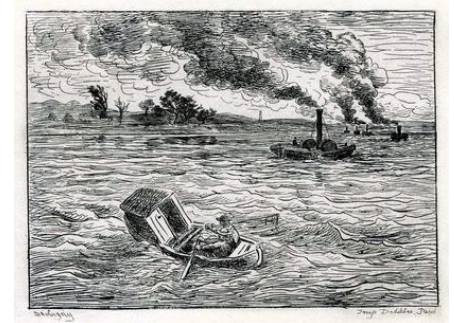
Located in the Manoir des Colombières, opposite the Auberge Ravoux where the painter Vincent Van Gogh lived his last moments, the museum is dedicated to understanding pre-Impressionism.

More than 1000 works make up its collections: the most important of them is permanently exhibited and presents the works of Charles François Daubigny (1817-1878), one of the founding fathers of Impressionism.

In 2020, the Daubigny museum is labeled "Musée de France".

Open from Tuesday to Friday from 2 pm to 5:30pm (6:30pm on Wednesdays); and weekends and holidays from 10:30am to 12:30pm and from 2pm to 5:30pm. In July and August, open from Tuesday to Sunday from 10:30am to 12:30pm and from 2pm to 5:30pm (6:30pm on Wednesdays). Closed on 25/12 and 01/01.

Full price: 5€. Click [here](#) to discover the reduced rates and free conditions.



Les bateaux à vapeur et Le Mot de Cambronne
(Charles-François Daubigny, 1861)

Rue de la Sansonne
95430 Auvers-sur-Oise
+33 (0)1 30 36 80 20
museedaubigny@ville-auverssurquoise.fr

The Absinthe Museum

The Absinthe Museum recreates the atmosphere of the Belle Époque cafés where absinthe was the favorite drink of artists.

The museum's collection follows the chronology of absinthe's history, from 1805 until its prohibition in 1915.

You can discover the medicinal virtues and dangers of absinthe, its origin, its manufacture, its consumption and its involvement in the artistic society until its prohibition. All the objects related to its manufacture or use are also present in the museum.

Open from 16/03 to 27/09, every weekend from 1:30pm to 6pm.

Different rates are offered depending on the chosen tour experience. See all rates [here](#).



Affiche de Fred Christol (1909)



Timbre postal (1907 - 1909)



Affiche de Lucien Lefèvre (1895)

44 rue Callé
95430 Auvers-sur-Oise
+33 (0)1 30 36 83 26
absinthe.auvers@free.fr

AUVERS - SUR - OISE

MAP



SEE THE MAP ON

 Google Maps



L'Isle-Adam: a pearl of well-being and tranquility

Once one of the favorite destinations of wealthy Parisians, L'Isle-Adam has retained its peaceful and green atmosphere just an hour by train from Paris, to the point of being considered as one of the most pleasant cities in France.

Conti Castle

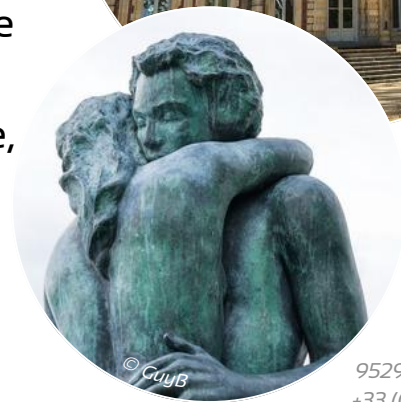
Bourgeois house built around the year 1000, and left abandoned for years, it is bought in 2005 by the municipality which rehabilitates.

The floors of the castle house the services of the Museum's town hall and the association "Les Amis de L'Isle-Adam", and the three rooms on the ground floor are open to artists and exhibitions.

The park offers a breathtaking view of the Oise, the dam, the locks and the beach.

Open from Monday to Thursday from 8:30am to 12pm and from 1:30pm to 5.30pm, on Friday from 8:30am to 12pm and from 1:30pm to 5pm, on Saturday from 8:30 to 12.

Free access.



© Philippe L

© Guy B

1 Rue de Conti
95290 L'Isle-Adam
+33 (0)1 34 69 21 38
contact@tourisme-isleadam

The Chinese Pavilion

Built between 1781 and 1785, the Chinese Pavilion is a proof that China fascinates the Westerners at this time, Because it brings them the emotional and the wonderful in a rigid, conventional society.

Visits on request.

Price: 6 €. Child rate: 3 €. Free for children under 6 years..



6 rue de Nogent
95290 L'Isle-Adam
+33 (0)1 34 69 41 99
contact@tourisme-isleadam



© @romainberrier

The Louis Senlecq Museum of Art and History

The Louis Senlecq Museum of Art and History preserves works of art dating mainly from the 19th and 20th centuries.

It has the "Musée de France" label and a collection of works related to the prestigious past of the city of L'Isle-Adam.

The collections are dedicated to the presence of the princes de Conti at L'Isle-Adam in the 18th century; to the terracotta works by Joseph Le Guluche (1849-1915); but also to the painter Jules Dupré.

The museum offers permanent collections and temporary exhibitions related to local history and heritage, but also focused on contemporary creation.

Open from Wednesday to Sunday from 2pm to 6pm, only during temporary exhibitions and except the following days: 23/12 to 31/12, 01/01, 01/05 and 14/07.

Full price: 4€50. See all the reduced prices and free conditions [here](#).



L'Hallali devant le château de L'Isle-Adam
(Louis-Gabriel Moreau, 1766)

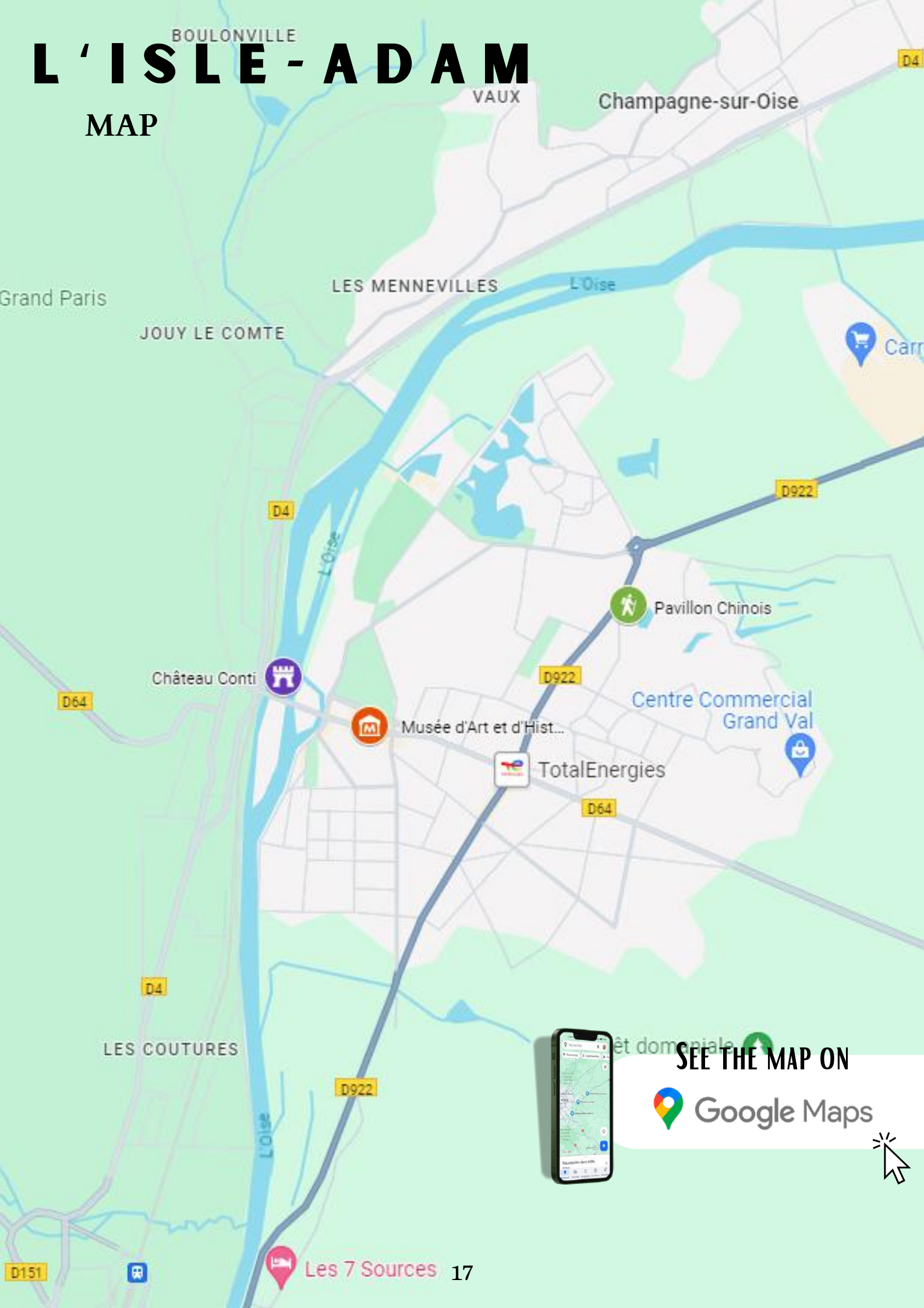


Deux femmes sur la terrasse du château Conti
(Léon Fort)

31 Grande Rue
95290 L'Isle-Adam
+33 (0)1 74 56 11 23
musee@ville-isle-adam.fr

L'ISLE-ADAM

MAP



SEE THE MAP ON

 Google Maps



Cergy-Pontoise: multiculturalism and monumental art

Once a small village of farmers, Cergy-Pontoise is today a multicultural center with a rich cultural offer.

The Axe majeur

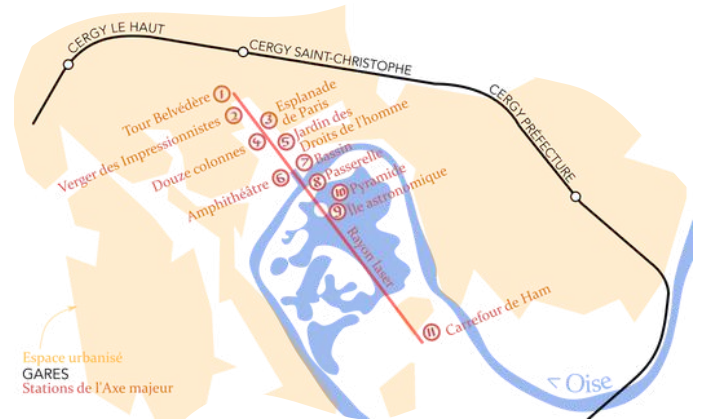
Built in the 1980s by Dani Karavan, the Major Axis is a boundary between sculpture, landscape, urban planning and architecture.

It is composed of 12 stations over a length of 3.2 kilometers.

Open every day, 24h/24h.

Free access.

5 Rue de l'Esplanade de Paris
95800 Cergy, France



Pissarro Museum of Art and History

Housed in a beautiful 19th century house overlooking the Oise, the museum includes works from the 17th to the 21st century, highlighting Camille Pissarro but also Freundlich, Caillebotte, Daubigny, Cabat, Boggio, Marcoussis, Matisse, Valmier, Hayet, Goldfarb, Rodin, etc.

Some 3,000 drawings, photographs and prints are also presented.

Open from Wednesday to Sunday from 11am to 12:30pm and then from 1:30pm to 6pm.

Full price: 7€. Reduced price: 5€50. Free for under 18 and the first Sunday of the month.



17 rue du Château
95300 Pontoise
+33 (0)1 30 73 90 77

Tavet-Delacour Museum

Housed in a late 15th century hotel, the Tavet-Delacour museum preserves the city's historical collections dedicated to the 20th century.

These collections are essentially built around the donation Otto Freundlich masters of the birth of Modern Art and precursor of abstraction.

His works, which were victims of Nazism, were exhibited in the exhibition Die Entartete Kunst (Degenerate Art) and were destroyed in large numbers in 1937.

Deported, he was to disappear in the camp of Lublin-Maydanek in March 1943. The museum's works constitute the preserved set of his work.

Open from Wednesday to Sunday, from 10am to 12:30pm and from 1:30pm to 6pm.
Closed on public holidays.

Full price: 5€. Reduced price: 4€. Free under 12 years.



4 rue Lemercier
95300 Pontoise
+33 (0)1 30 38 02 40

CERGY - PONTOISE

FESTIVAL

"Cergy, Soit !" is the first festival of street arts and circus in Île-de-France. Created in 1998, the festival has made its mark on the cultural landscape of the region and is now the must-attend cultural event of the new year.

On the spot: circus, dance, puppets, theatre, music... and more!

From 13/09 to 22/09.

Free festival.

Programming



© @cergy.soit



Leisure island

The outdoor and leisure base of the leisure island of Cergy-Pontoise includes nearly 6 water bodies of 120 hectares fed by groundwater.

The walk or bike ride around the lakes is very pleasant, and many activities are offered: paintball, water ski, wakeboard, tree climbing, wave surfing, kayaking, paddle, Pedal boats, rafting and much more!

The island also has a beach where swimming is supervised.

Open every day 24h/24. Access to vehicles is allowed from 8am to 8pm from October to March, and from 7am to 8pm from April to September. The opening hours of the activities are variable and can be found on the [website of the Island](#).

Free access. Activities and entrance to the beach are for a fee: the different rates can be found on the [website of the island](#).

Île de loisirs de Cergy-Pontoise
95000 Neuville-sur-Oise
+33 (0)1 30 30 21 55



Grouchy park and castle

The estate of Grouchy, which is owned by the department and the municipality of Osny, covers almost 41 hectares. Its castle, listed as a historic monument, has been home to the town hall of Osny since 1989.

Grouchy Park alternates wooded areas, ponds and vast lawns. Its ecological management respects the wetlands to promote the return of plant species such as orchids.

Open every day from 8am to 8pm (from 15/03 to 15/09) and until 7pm (from 16/09 to 14/03).

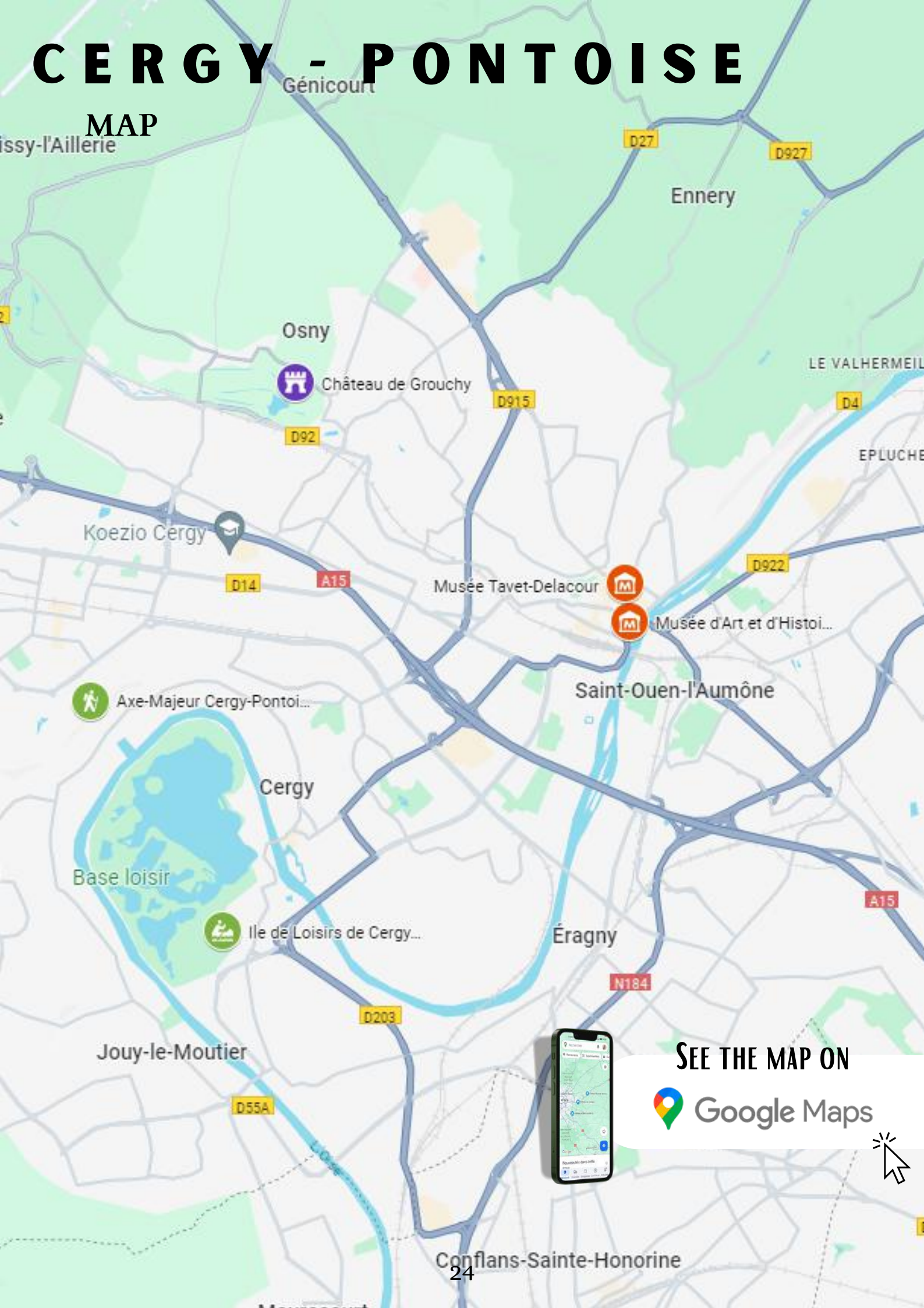
Free access.

14 rue William Thornley
95520 Osny
+33 (0)1 34 25 42 00



CERGY - PONTOISE

MAP



SEE THE MAP ON

 Google Maps



Montmorency: between calm and serenity

On the edge of the forest that bears its name, the town of Montmorency is known for its privileged environment and peaceful atmosphere. The city dominates the plain of France and the valley of Montmorency.

Jean-Jacques Rousseau Museum

Labeled “Musée de France” and “Maison des illustres”, the museum is located in the small house of Mont-Louis where Jean-Jacques Rousseau stayed from 1757 to 1762, to escape the capital, “city of noise, smoke and mud”. It was there that he wrote *Julie ou la Nouvelle Héloïse*, the *Letter on the shows*, *Du Contrat Social* and *Émile or l'Éducation*. The condemnation of Emile causes the philosopher to flee on 9 June 1762.

The museum offers to discover the setting in which the writer was developing, his room and his work cabinet.

Temporary exhibitions (April to October) also allow you to discover the life and work of Rousseau as well as the eighteenth century and local history.

Open from Tuesday to Sunday from 2pm to 6pm from April to October, and from Tuesday to Saturday from 2pm to 6pm from November to March. Closing on 01/05, 28/05, 02/06, 09/06, 30/06, 14/07, 01/11 and two weeks at the end of the year.

Full price: 5,33€. Find out the reduced rates and free conditions [here](#).



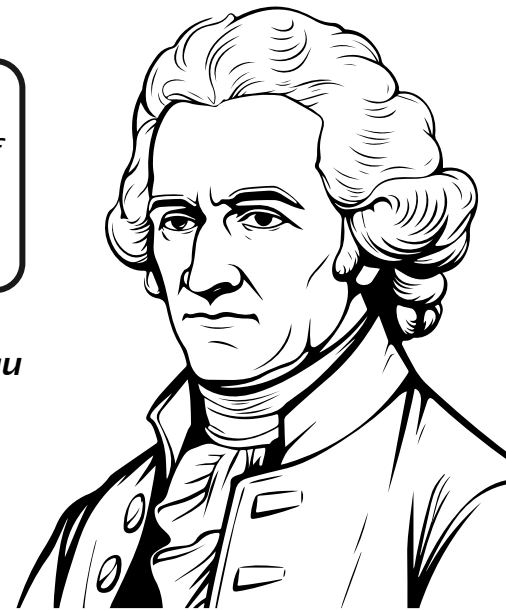
5 rue Jean-Jacques Rousseau
95160 Montmorency
+33 (0)1 39 64 80 13
rousseau-museum@ville-montmorency.fr

“
Dare I lay before you the greatest,
most important, most useful rule of
all education? It's not about saving
time, it's about losing time.
”

Translated from French

“
The main thing is to be what nature
made us; we are always only too
much what men want us to be.
”

Jean-Jacques Rousseau





JEAN-JACQUES ROUSSEAU

T R U E O R F A L S E ?

Rousseau's five children were left to the Found-Children.



Jean-Jacques Rousseau refused to marry his partner.



Rousseau was murdered by one of his enemies.



Les Confessions answer the first two questions.



Click [here](#) to find the answers!

Montmorency forest

If you are looking for peace and serenity, join the paths of the Montmorency forest, one of the three great forests of the Val-d'Oise.



Many hiking and mountain biking trails are available to enjoy the fauna and flora of the forest.

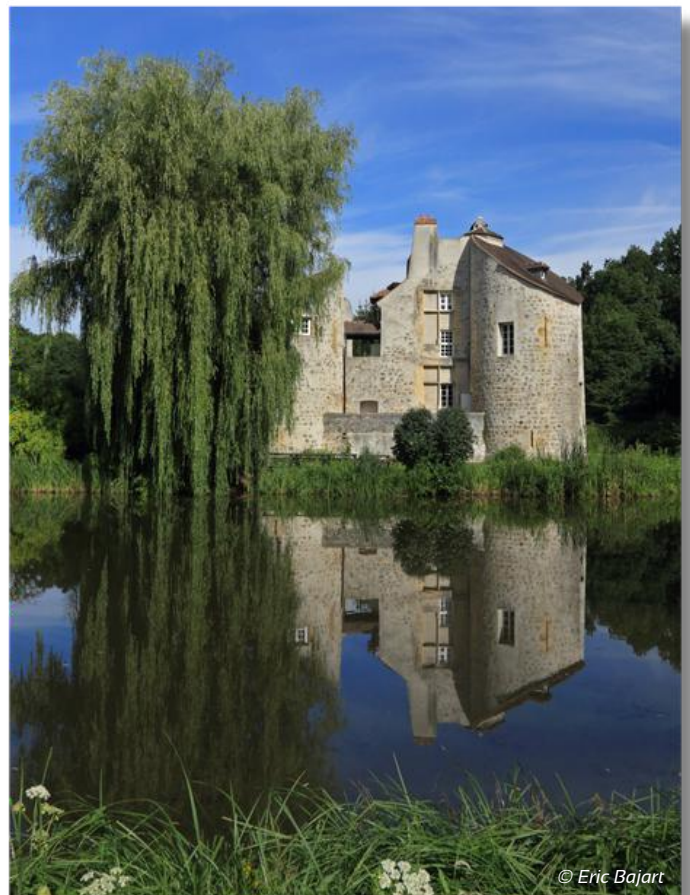
The Castle of the Hunting

Located in the heart of the forest of Montmorency, a natural reserve of fauna and flora in a forested environment, the domain was the witness of the walks of Jean-Jacques Rousseau and Bernard de Jussieu.

The castle is now classified as a Historic Monument but it is not open to the public. You can however observe it from the outside and enjoy walks around the estate.

Park open every day from 10am to 6pm.

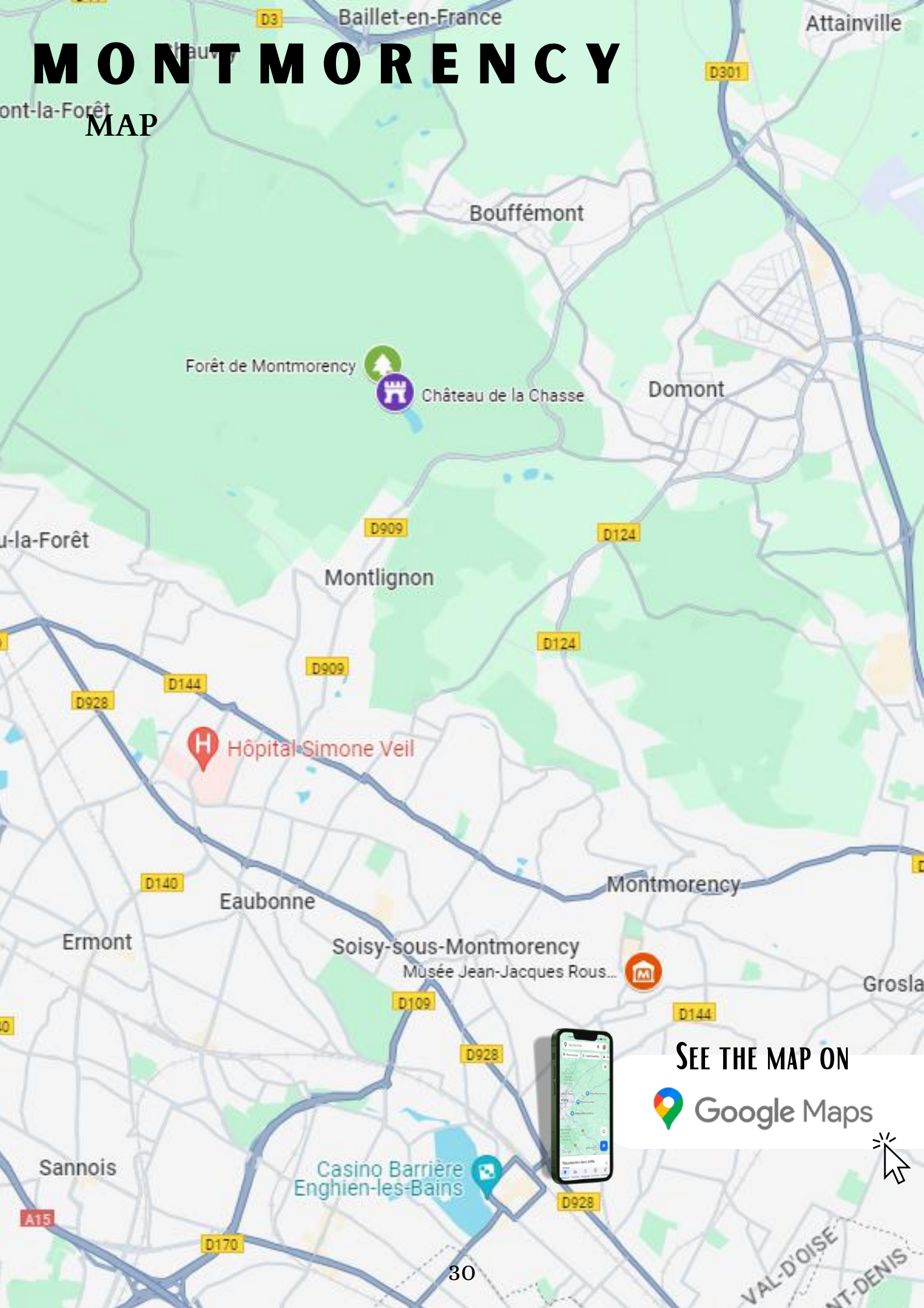
Free access.



*Ruisseau du Petit Moulin
95390 Saint-Prix*

MONTMORENCY

MAP



SEE THE MAP ON

 Google Maps



Enghien-les-Bains: charm and luxury in the French style

Unique spa resort of Île-de-France, Enghien-les-Bains occupies a place in the northern suburbs of Paris.

Casino Barrière

The first casino in France and completely renovated in 2005, the casino of Enghien-les-Bains is a real place of charm and luxury. You will discover a festive atmosphere and an amazing view of the lake of Enghien.

Open every day from 10am to 4am. Table games from 3pm on weekdays and from 4pm on weekends.

Single rate: 16€ to enter.

3 Av. de Ceinture
95880 Enghien-les-Bains
+33 (0)1 39 34 13 17



© Casino Barrière

Diane Barrière Thalasso Spa

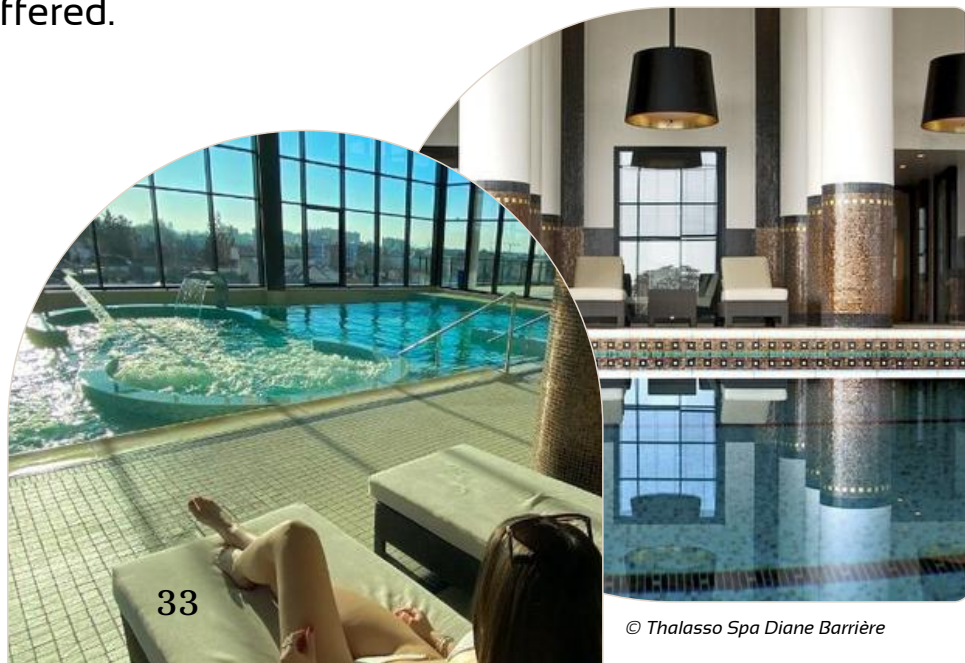
In 2015, the Barrière group renamed its spaces entirely dedicated to well-being. They are gathered under the label Diane Barrière in tribute to that which embodied a new generation of women: beautiful, elegant and daring. Located on the edge of a lake, the Diane Barrière Spa Enghien-les-Bains offers a haven of peace for an experience as luxurious as it is authentic.

Treatments, massages, aquatic course, swimming pool, hammam, sauna, sports rooms and group lessons are offered.

Open from Monday to Saturday from 8:30am to 9pm and on Sunday from 9am to 8:30 pm.

Many different rates depending on the options chosen. All rates are available on the [spa site](#).

87 Rue du Général de Gaulle
95880 Enghien-les-Bains
+33 (0)1 39 34 10 50
accueilsa-enghien@groupebarriere.com



33

© Thalasso Spa Diane Barrière

La Roche-Guyon: the “most beautiful village in France”

Located below the slopes of the Vexin plateau, the village is famous for its castle. The place, classified as the only "most beautiful village in France" The French capital, Paris, has been a tourist centre since the 19th century and has seen many celebrities of the arts and letters.

Château de La Roche-Guyon

From the cliff on which it has clung for over 1000 years, the imposing medieval castle seems to watch over the village.

Completely rebuilt, enlarged and embellished in the 18th century, the castle, leaning against the cliff is connected to the medieval keep that dominates it by a subterranean dug into the rock. Famous for its history, General Rommel had established his quarters there during the Second World War.



1 rue de l'Audience
95780 La Roche-Guyon
+33 (0)1 34 79 74 42

service.accueil@chateaudelarocheguyon.fr

Open from 03/02 to 24/11, from 10am to 5pm.

Full price: 9€50. Click [here](#) to discover all the reduced prices and free conditions.



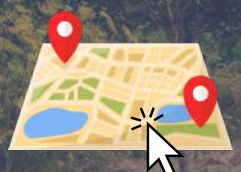
GO TO LA ROCHE-GUYON

2 h 10 by train from
Paris

37

1 h 15 by car from
Paris

[Itinerary](#)



Villorceaux: historical domain

Vast estate of 800 hectares, the Villorceaux domain belongs today to the Meyer Foundation, which has divided the estate into 3: the historic estate where you will find gardens and old buildings, a golf course with restaurant, and an organic farm: la Bergerie.

Villorceaux Domain

Consisting of a historic domain of almost 70 hectares and 2 castles (16th century manor house and 18th century castle), the estate has received the label "Remarkable Garden" and illustrates the evolution of garden styles through the centuries. The area is also certified "Ecological Vegetation" and "Natura 2000".



© Domaine de Villorceaux



© Domaine de Villorceaux



The lower castle was heavily modified during the Middle Ages and until the 16th century. As for the castle of the top, it displays a beautiful architecture of the eighteenth century, whose interior can be visited.

In the 17th century, the "Manoir de Ninon", by the water, with its tower and vaulted passage, welcomed the sultry courtier Ninon de Lenclos, who came to join her lover for a few summers.

Open from 01/04 to 22/10 from 2pm to 6pm, from Tuesday to Sunday. Guided tours on reservation (at least 10j in advance).

Open access.

Domaine de Villorceaux
95710 Chaussy
+33 (0)1 34 67 73 54
domainevillorceaux@yahoo.fr



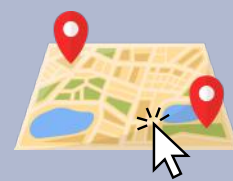
GO TO VILLORCEAUX

2 h 15 by train from
Paris

39

1 h 15 by car from
Paris

[Itinerary](#)



Royaumont Abbey

Founded in 1228 by Saint Louis (Louis IX) and his mother, this Cistercian abbey classified as a historical monument has 3 gardens and a park of 7 hectares. Since 2017, the building has opened a hotel/restaurant that allows you to spend a weekend at the abbey.

Open every day from 10am to 5:30pm from November to March and from 10am to 6pm from April to October. Closed on Mondays, except school holidays (*zones B and C*).

Full price: 10 €. Access the reduced rates and free conditions [here](#).



© Abbaye de Royaumont

5 route de Chantilly
95270 Asnières-sur-Oise
+33 (0)1 30 35 59 00

© Abbaye de Royaumont



GO TO ROYAUMONT

1 h 50 by train from
Paris

41

1 h by car from
Paris

Itinerary



Écouen and its castle: a monument of the Renaissance

Cross the streets full of history of the charming village of Écouen before reaching its heights and discover one of the most beautiful monuments in the Val d'Oise: the Castle of Écouen, now a National Museum of the Renaissance.

National Museum of the Renaissance

Owned by Anne de Montmorency, the first minister of kings François I and Henri II, Écouen Castle now houses the National Museum of the Renaissance. Built between 1538 and 1555, this monument of the French Renaissance is in the heart of 104 hectares of forest.

Open every day except Tuesday, from 9:30am to 12:45pm and from 2:00pm to 5:15pm. Closed on 01/05, 25/12 and 01/01.

Full price: 5€. See the reduced rates and free conditions [here](#).



© My, SortirAParis

Rue Jean Bullant
95440 Écouen
+33 (0)1 34 38 38 50
accueil.musee-rennaissance@culture.gouv.fr



© Anne Chépeau



GO TO ECOUEN

1 h by train from
Paris

43

1 h by car from
Paris

[Itinerary](#)



MONUMENTS

TO SEE



MONUMENTS

TO SEE

Maubuisson Abbey

Former Cistercian abbey of women founded in 1236 by Blanche de Castille in a 10 hectare park, and now classified as a Historic Monument, It is dedicated to contemporary art and produces large monographic exhibitions.

Visitors can also discover the chapter house, the parlor, the old passage between cloister and garden, the room of the nuns, and the old latrines.

Open on Wednesdays from 9:30am to 11:45am and from 1pm to 6:15pm, holidays and Thursday to Monday from 1pm to 6:15pm. Closing at 5:45pm from 11/10 to 31/03. Closed on 01/05, 25/12 and 01/01.

Free access.



© Abbaye de Maubuisson

Avenue Richard de Tour
95310 Saint-Ouen-l'Aumône
+33 (0)1 34 33 85 00
abbaye.maubuisson@valdoise.fr

Previous exhibitions at the abbey



Entre les murs (Tanja Smeets et Karin van Dam, 2023-2024)



Insomnies (Stéphane Thidet, 2016)



Un peu plus loin (Stéphane Thidet, 2016)



Échos (Patrick Neu, 2017-2018)

Park of the castle of Méry-sur-Oise

Located on the left bank of the Oise, in the heart of the city center and surrounded by 27 hectares of greenery, the castle of Méry-sur-Oise now hosts cultural events.

Its huge park was designed as a course of water, during which visitors travel through different continents.

Park open every day from 8am to 7pm from 01/04 to 30/09 and from 8am to 5pm from 01/10 to 31/03. The castle opens during events throughout the year.

Free access.



3 Avenue Marcel Perrin
95540 Méry-sur-Oise
+33 (0)1 30 36 23 00
contact@merysuroise.

Guiry-en-Vexin Castle

Built in the 17th century, the domain of Guiry-en-Vexin has been in the same family for more than ten centuries.

The current castle succeeds a medieval castle of which nothing remains, and a 16th century castle now in ruins. An inscription on one of the chimney stems of the castle allows to date its completion in 1665.

The courtyard is lined with buildings and a vast park extends on the other side leading to the ruins of the 1st castle. The interior is distinguished by a large staircase leading upstairs and vaulted cellars. The castle, the common areas, the park, the rider's alley, the seigneurial church and the castle of the Cabin were classified as Historic Monuments in 1944.

Opening of the castle and park during the "Rendez-vous aux Jardins" (1st weekend in June), during the "Journée du Patrimoine" (3rd weekend in September), and from 20/07 to 01/09 from 10am to 4pm. Guided tours by the owners are on Wednesdays and Sundays at 3pm

Free access (guided tours: 10€).

19 rue Saint-Nicolas
95450 Guiry-en-Vexin
+33 (0)6 09 90 51 50 / +33 (0)6 30 10 88 77
informations@chateaudeguiry.fr



Castle of Ambleville

Listed as a Renaissance Historic Monument, the Ambleville domain is also distinguished by the label "Jardin Remarquable".

The visit of the castle includes the Marquis' room, the Leather Salon, the Tapestry Gallery, the Ebony Cabinets, and the Directoire Dining Room. The sumptuous Italian gardens are also open to visitors.

Open all weekend from 2pm to 5.30pm from 03/06 to 01/07 and from 01/09 to 17/09 (visit the castle at 3:30pm); and open Tuesday to Sunday from 10:30am to 12:00pm and from 2:15pm to 6:00pm from 02/07 to 31/08 (visit of the castle at 10:30am, 3pm and 4:30pm).

Full price: from 6€ to 9€ (gardens: 6€ / gardens + castle: 9€). Free for children under 6 years.



© Philippe_28



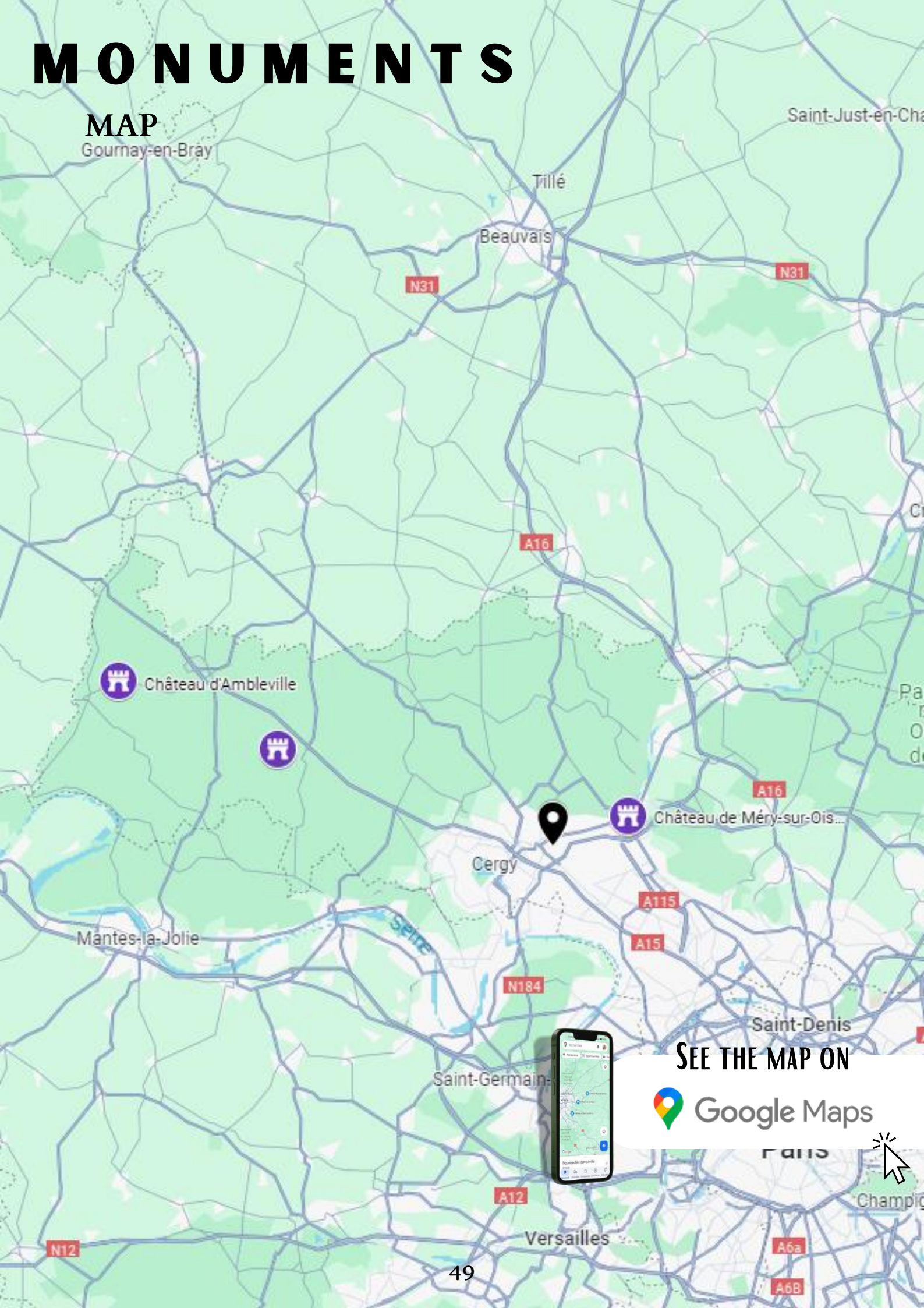
© Envera Jahjafendic

1 Rue de la Mairie
95710 Ambleville
+33 (0)6 25 64 75 73
info@chateauxetjardins.com

MONUMENTS

MAP

Gournay-en-Bray



Château d'Ambleville



Château de Méry-sur-Ois...



Cergy

Mantes-la-Jolie

SEINE

Saint-Denis

Saint-Germain-

Paris

Versailles

Champio

SEE THE MAP ON



Google Maps



MUSEUMS

NOT TO MISS



MUSEUMS

NOT TO MISS

Impressionist House Claude Monet

Much more than a museum, this Swiss chalet house built in 1871 was the residence of Claude Monet in 1874, and this for 4 years.

As soon as you enter the house, a scenographic journey begins with the arrival of Claude Monet; then the visit of the winter garden, rebuilt after his paintings.

The first floor is dedicated to Monet's works looking at the city and surrounding countryside.

On the second floor, it is towards the Seine that the route continues: a selection of works around the banks of the Seine and regattas offers a panel of magnificent views of the river.

As for the garden, it has been completely rearranged according to Monet's paintings: the old path is materialized on the ground and the water pump has been restored.

Open on Wednesday and Saturday from 11am to 1pm and 2pm to 7pm and Sunday from 2pm to 7pm in spring and summer. In autumn-winter, opening on Wednesday and Saturday from 10am to 12:30pm and 1:30pm to 6pm and Sunday from 2pm to 6pm. Closed on holidays and from 31/07 to 05/09.

Full price: 5€. Find out the reduced rates and free conditions [here](#).



Le pont d'Argenteuil un jour gris
(Claude Monet, 1874-1876)

“
It's through observation and reflection that we find a way. So you have to dig and dig all the time.
”

Translated from French

“
Color is my daily obsession, my joy and my torment.
”

Claude Monet

21 boulevard Karl Marx
95100 Argenteuil
+33 (0)1 34 23 41 98
maison.impressionniste@ville-argenteuil.fr





CLAUDE MONET

V
R
A
I
O
U
S
F
A
U
X
?

The term "impressionism" comes from one of Monet's paintings.



With his fame, Monet led a very pleasant life.



It is possible to visit the gardens of Claude Monet in Giverny.



Monet holds the record for the most pictures of water lilies ever made by a single man.



Click [here](#) to find the answers!

François Mauriac Museum

François Mauriac, who won the Nobel Prize in Literature in 1952 and is a world-renowned writer, has been the subject of a small museum named after him in Vémars. His office, library, many original documents and a collection of photographs are gathered here.

Open from Monday to Wednesday from 9am to 12pm and from 2pm to 6pm, on Thursday from 2pm to 6pm, on Friday from 9am to 12pm and from 2pm to 5pm, and on Saturday from 9am to 12pm. **Visits by appointment.**

Free access.

5 Rue Léon Bouchard
95470 Vémars
+33 (0)1 34 68 33 40
mairievemars@mairievemars.fr



François Mauriac
(1885 - 1970)

House of Arts and Crafts of the Vine

Until the end of the 18th century, the Île-de-France was one of the largest wine regions in France. The objective of the establishment is to present, conserve and showcase objects, materials and documents related to the regional wine heritage.

Open all year **by appointment** (from 5 people).

Full price: 3€. Child and disabled persons rate: 2€.

7 Boulevard Gambetta
95640 Marines
+33 (0)1 34 42 71 64
maisondelavigne95@gmail.com



Museum of the Vexin français

Located in the Castle of Théméricourt, the museum devotes various spaces to natural environments, fauna and flora, geology and landscapes of the Vexin.

The museum offers a diverse cultural program around workshops, shows or conferences related to temporary exhibitions; but also a shop with a wide range of products from local crafts and know-how.

The estate has a 6-hectare park with a pond and offers a pleasant place for walking (bike rental is available from April to October).

Open from Tuesday to Friday from 9am to 12.30pm and from 2pm to 6pm, on Saturday from 2pm to 6pm, and on Sunday from 10am to 7pm from May to September, or from 2pm to 6pm from October to April. Closed every Monday and all the month of December.

Full price: 4 €. Child rate (up to 15 years): 2€. Free for children under 5.



Maison du Parc
95450 Théméricourt
+33 (0)1 34 48 66 00
musee@pnr-vexin-francais.fr

Museum of the tool

The Museum of the tool brings together the traditional tools of the arts and popular traditions of the Vexin Français used once.

The Roman baths have also been renovated in the basements. The gardens of the museum are labelled "Jardin Remarquable" and "Ecojardin".

Open from Wednesday to Friday, from 1pm to 5:30pm. Opening on weekends and holidays from 1pm to 6pm. Closing on 25/12 and 01/01.

Free tours, activities and events possibly paid and on reservation.

Rue de la Mairie
95420 Wy-Dit-Joli-Village
+33 (0)1 39 64 80 13
contact.musees@valdoise.fr



The Moisson Museum

Located in an old farmhouse, the Moisson Museum traces the past of French grain culture. The visit of the museum is a must for all curious and lovers of old agricultural machinery and knowledge of the cultivation of cereals and their processing.

Every two years, all the machines still in working condition are used during the Sagy Harvest Festival. A documentary on the history of agriculture in the French Vexin is also offered to adults and children.

Opening on reservation on Mondays, Tuesdays and Thursdays, from 9am to 5pm. Open without reservation some Sundays in the year from 9am to 5pm (dates available on the [museum website](#)).

Full price: 4 €. Child rate (up to 15 years): 2€. Free for children under 5.



6 rue Vaux de l'Orme
95450 Sagy
+33 (0)1 34 66 39 62
musee.moisson@orange.fr

The Archaeological Museum of Val d'Oise

Located in the Vexin-French Natural Park, the Archaeological Museum of the Val d'Oise highlights the heritage from the excavations that have been carried out in the region. Its reserves contain some 50,000 works spanning 90 million years of the territory's evolution, from the Cretaceous to the 1940s.

The museum is called "Musée de France" for the quality of its collections, its history and its actions of valorization.

Open from Tuesday to Friday from 9am to 5:30pm; weekends and holidays from 1pm to 6pm. Closed on December 25 and January 1.

Free admission.



4 Place du Château
95450 Guiry-en-Vexin
+33 (0)1 34 33 86 00

Naval Museum

The rich collection of the naval museum includes models, but also photographs and objects brought from trips around the world.

The museum illustrates the history of hard trades, ranging from simple foam to sea rescue specialist. The evolution of the military fleet since the creation of the Royal under Louis XIV, and those of fishing armaments and pleasure boats are also mentioned.

It is possible to take the helm in a reconstructed cockpit, before stopping at the library or documentation centre.

Open from September to June, on Saturdays from 2pm to 6pm; or by appointment.

Free admission.



27 Boulevard du Général-de-Gaulle
95200 Sarcelles
+33 (0)1 39 90 41 70

Moulin de la Naze (Meunerie House)

The Moulin de la Naze values traditional activities of yesteryear: harvest, milling and bread.

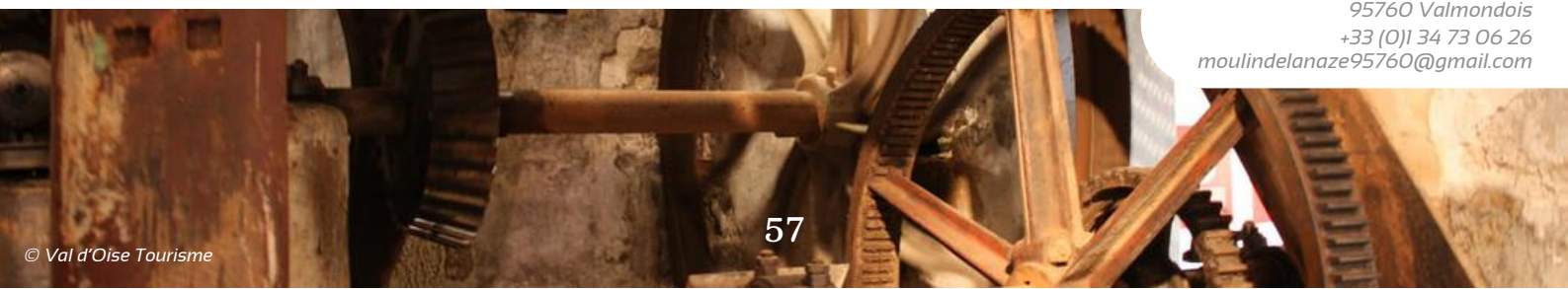
Pulleys, gears and gears bring to life the animated model of an 18th century water mill.

The history and techniques of the millers in the region are the subject of exhibition panels and models to discover while walking inside the Moulin de la Naze.

Open from 01/03 to 15/12, every weekend: Saturday from 2pm to 6pm, and Sunday from 10am to 12pm and from 2pm to 6pm.

Full price: 3€. Child rate (from 5 to 15 years): 2€. Free for children under 5 and people with reduced mobility.

Rue du Moulin Morel
95760 Valmondois
+33 (0)1 34 73 06 26
moulindeLANAZE95760@gmail.com



Museum of Steam Trams and French Secondary Railways (MSTS)

Non-profit association created in 1976, the MTVS rehabilitates railway equipment and operates the Crèvecœur le Grand – Saint Omer en Chaussée line.

At the Crèvecœur-le-Grand station, you can board the historic train and discover the historic train for a journey of about 45 minutes.

You will also discover an exhibition gallery on the theme of old trains and an exhibition of machines and cars being restored or stopped.

Open by reservation from May to September, then for the Santa train in December. Book your visit [here](#).

Full price: 7€. Child rate (from 4 to 12 years): 5€.



16 Place de la Gare
60360 Crèvecœur le Grand
+33 (0)7 68 54 49 70

Department museum of the fire brigade of the Val d'Oise

The museum is a real educational tool and presents fire fighting equipment from the 18th century to the present day.

A room traces the history of outfits, helmets and headdresses from 1830 to 1960. Another room, for children, allows you to discover a collection of toys whose oldest date from the 19th century.

Open on Wednesdays and weekends from 2pm to 5:30pm. During school holidays, open from Wednesday to Sunday from 2pm to 5:30pm. Closed during the month of August, the end of years and holidays.

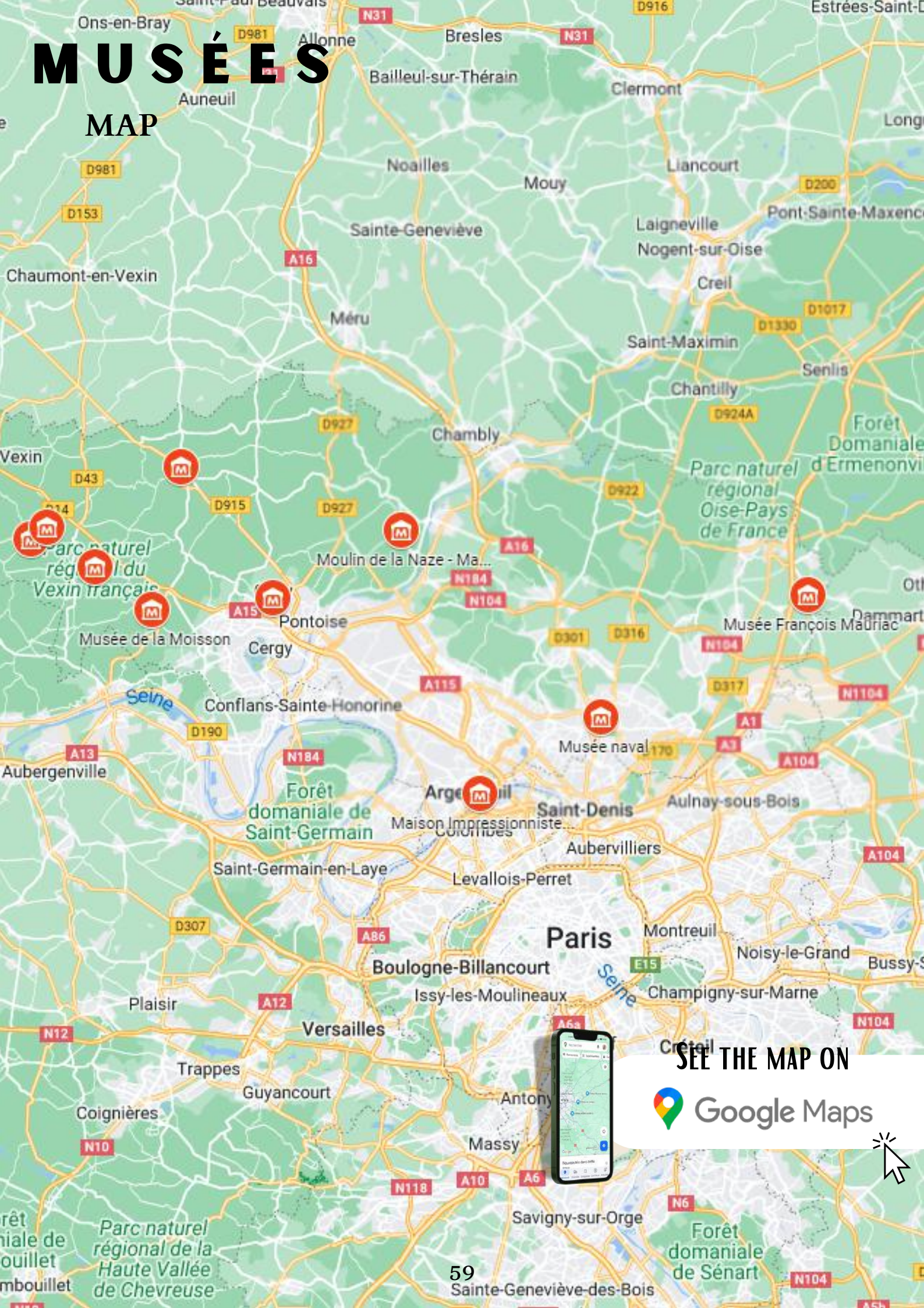
Full price: 6€. Discover all the reduced prices and free conditions [here](#).

Parc de Grouchy
95520 Osny
+33 (0)1 34 22 19 45
musee@sdis95.fr



MUSÉES

MAP



SEE THE MAP ON



Google Maps



TRUE OR FALSE: JEAN-JACQUES ROUSSEAU

Rousseau's five children were left to the Found-Children. ✓

Jean-Jacques Rousseau had, according to him, «good reasons» for abandoning his children. He often invoked his poverty, which left him no other choice.

However, many people think that he was sterile and that the abandoned children could not be his..

Jean-Jacques Rousseau refused to marry his partner. ✗

Protestant, Rousseau could not marry anyone in France; and in Switzerland, it was Therese's Catholicism that prevented their union.

They did marry, however, despite the laws.

Rousseau was murdered by one of his enemies. ✗

Despite the many rumours that Rousseau committed suicide or was murdered, the doctors of the time are clear: Jean-Jacques Rousseau died of a stroke.

Les Confessions answer the first two questions. ✓

According to Rousseau, the human being naturally wants to do good, but life in society corrupts it and can push it to be evil or unhappy. Rousseau invites people to return to nature and abandon life in society.

TRUE OR FALSE: CLAUDE MONNET

The term "impressionism" comes from one of Monet's paintings. ✓

The term "impressionism" is derived from the title of his painting "Impression, soleil levant" which was exhibited in 1874 in the first of the exhibitions mounted by Monet and his friends as an alternative to the Salon de Paris. The term was first used by comedian Louis Leroy as a criticism of the group.

With his fame, Claude Monet led a very pleasant life. ✗

Despite his growing fame, Monet faced financial difficulties and will attempt to commit suicide in 1868 by throwing himself into the Seine. He survived, but his wife, Camille, died in 1879 at the age of thirty-two.

It is possible to visit the gardens of Claude Monet in Giverny. ✓

The gardens of Claude Monet in Giverny are open to the public every day (holidays included) from 9:30am to 6pm from 29/03 to 01/11. The full price is 13€ (many reduced rates available).

[Website and ticketing](#) 

Monet holds the record for the most pictures of water lilies ever made by a single man. ✓

Claude Monet holds the record for the most pictures of water lilies ever made by a single man: 300 paintings created during the last 31 years of his life. He created a garden in his property of Giverny bought to devote himself to painting, but also to his passion for botany.



Thank you for reading
our magazine!

Project carried out as part of the
Île-de-France student
ambassadors Trophy



With the support of



Find all our magazines:



Paris (75)



Seine-et-Marne
(77)



Yvelines (78)



Essonne (91)



Hauts-de-Seine
(92)



Seine-Saint-
Denis (93)



Val-de-Marne
(94)



Val d'Oise (95)

Our website:



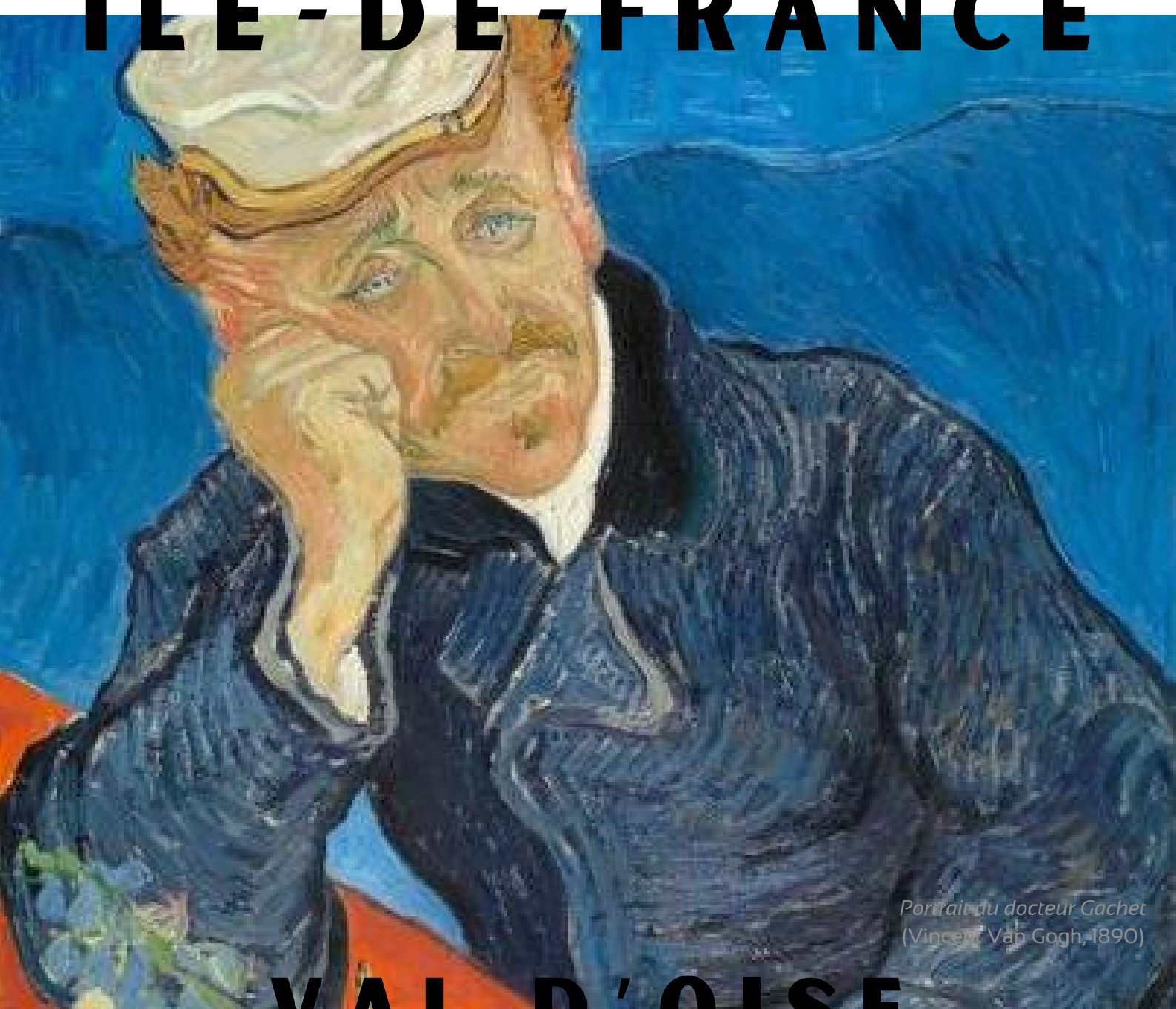
To follow our adventure:



@discoveridf



DON'T MISS ANYTHING ABOUT
ÎLE-DE-FRANCE



*Portrait du docteur Gachet
(Vincent Van Gogh, 1890)*

VAL D'OISE

EDITION



discoveridf