

WELCOME TO APPARENT

# Powering Your Project with Reliability, Efficiency, and Expertise

[Book an Expert Call](#) →

[Get a Quote](#)

## OVERVIEW



## At Apparent Powers Systems FZCO, we're more than just a supplier

We are a trusted name in the UAE market, delivering excellence through a comprehensive range of power solutions. Representing global manufacturers, we offer a diverse array of power supply solutions tailored to meet your specific needs.

**82+**

Client Served

**15+**

Region Served

**240+**

Projects Delivered


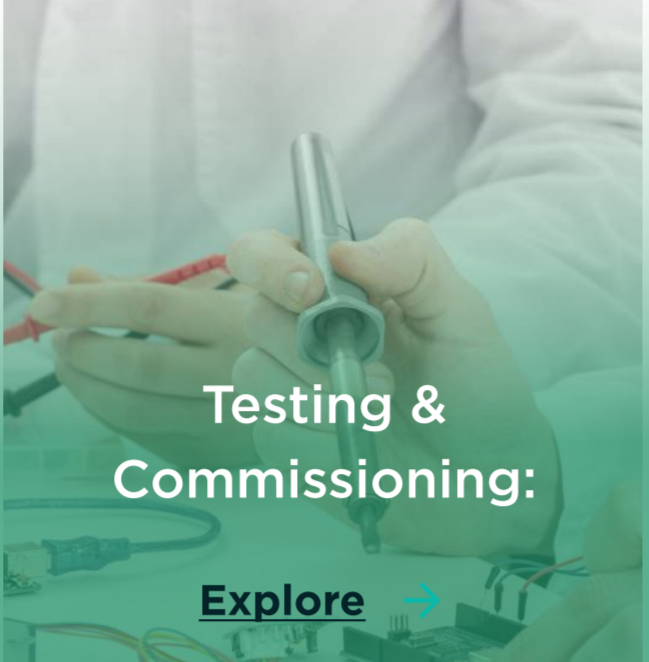


## GLOBAL REACH

Explore our worldwide presence and the impact of our power solutions around the globe.

At Apparent Powers Systems FZCO, our commitment to excellence knows no bounds. With a strong presence across the globe, we're dedicated to empowering success stories in every corner of the world.



**SOLUTIONS**

 <p><b>Engineering Services &amp; Solutions:</b></p> <p><a href="#">Explore</a> →</p> <p>Our traditional and advanced engineering services encompass system design, analysis, equipment selection, installation, and maintenance, ensuring optimal efficiency, reliability, and performance for your power systems.</p>	 <p><b>Testing &amp; Commissioning:</b></p> <p><a href="#">Explore</a> →</p> <p>Rigorous testing and commissioning processes validate system functionality, reliability, and safety, ensuring compliance with industry standards and delivering solutions that meet or exceed client expectations.</p>	 <p><b>Economical Power Solutions</b></p> <p><a href="#">Explore</a> →</p> <p>Our strategies optimize costs while maintaining high reliability and enhancing durability, including efficient design, lifecycle cost analysis, energy optimization, predictive maintenance, and continuous improvement initiatives.</p>	 <p><b>Technical Consultation</b></p> <p><a href="#">Explore</a> →</p> <p>Tailored Solutions for Power Systems Our capabilities in custom product formulation cater to unique client needs, delivering specialized power converters, control systems, monitoring devices, and more, through a collaborative design and development process.</p>
--	--	---	--

**OUR PARTNERS**

**PRODUCT CATEGORIES**

**Our Broader Category of Product Range**

<p><b>AC-DC Power Supplies</b></p> <p><a href="#">Explore</a> →</p>	<p><b>DC-DC Converter</b></p> <p><a href="#">Explore</a> →</p>	<p><b>Frequency Converter</b></p> <p><a href="#">Explore</a> →</p>	<p><b>DC UPS &amp; Battery Chargers</b></p> <p><a href="#">Explore</a> →</p>	<p><b>AC UPS</b></p> <p><a href="#">Explore</a> →</p>
<p><b>Industrial Battery</b></p> <p><a href="#">Explore</a> →</p>	<p><b>DC-AC Inverters</b></p> <p><a href="#">Explore</a> →</p>	<p><b>Power Quality</b></p> <p><a href="#">Explore</a> →</p>	<p><b>Protective Devices</b></p> <p><a href="#">Explore</a> →</p>	<p><b>EV Chargers</b></p> <p><a href="#">Explore</a> →</p>

**AC-DC POWER SUPPLIES**



**DFLEX Series**

Power Supply DFLEX are the best devices for industrial and domestic applications, especially suitable for applications for the automation of buildings. Ideal applications for the low load profile panel. Single-phase input, output ranging from 15 to 60W, in the robust container.

[Learn more](#) →



**FLEX Series**

The FLEX range of products offers 1, 2, and 3-phase input up to 500W with a current rating ranging to 25A and power flexibility that reaches 50% of the rated current.

[Learn more](#) →



**SW Series**

The SW range comprises single-output power supply units with an excellent price-performance ratio. Very small in size, these power supplies are 90% efficient. All models have short circuit and overload protection. They do not require any form of regulation.

[Learn more](#) →



**PFC Series: PFC 53-F2**

This rugged, industrial quality AC-DC power supply with power factor corrected input utilizes field-proven PFC53 technology to generate the required output power. It is a mature design with a track record in numerous applications.

[Learn more](#) →

**DC-DC CONVERTER**



**DCW Series**

The FLEX range of products offers 1, 2, and 3-phase input up to 500W with a current rating ranging to 25A and power flexibility that reaches 50% of the rated current.

[Learn more](#) →



**SUP Series**

This line is designed for all non-industrial applications: isolated and non-isolated power supply units/converters, able to supply input-output voltages equal to or different from rated input voltage.

[Learn more](#) →



**BAP Series**

This rugged, industrial quality DC/DC converter uses field-proven topology to generate the required output power. It is a mature design with a track record in numerous applications. Cooling is by conduction via baseplate.

[Learn more](#) →



**CRS-2000**

Our 2000W DC/DC converter boasts a compact yet sturdy design, offering versatility with its multiple input-output voltage configurations, catering to a broad spectrum of high-power conversion needs. Utilizing SiC Technology, this converter series achieves exceptional power density.

[Learn more](#) →



**CLS-120**

Our DC/DC converter series is tailor-made for industrial and railway applications necessitating operation within battery voltage ranges spanning from 14.4 to 154Vdc. Offering an 'all-in-one' solution, it simplifies the procurement and inventory management process, making it an optimal choice for streamlined operations.

[Learn more](#) →



**CVS-280**

Addressing the critical demand to mitigate light rail and streetcar start-up challenges, our product offers a sought-after solution for railway operators striving to ensure seamless vehicle launches without morning surprises.

[Learn more](#) →



## CSR-1000

Our product introduces a dependable 1000W DC/DC converter series, characterized by its compact yet durable design. It reliably delivers 1000W across 24, 48, 72, and 110V outputs, offering a diverse range of input-output configurations.

[Learn more](#) →



## CRS-500

Our product presents a high-power DC/DC converter tailored for demanding industrial environments, prioritizing top-tier performance and reliability. Designed to meet the stringent requirements of industrial settings, all models are also optimized for railway applications, adhering to the EN50155 standard.

[Learn more](#) →



## CTS-240

All DC/DC converters within our Product series are compliant with EN50155 standards for electronic equipment utilized in rolling applications and hold approval for fire and smoke adherence as per EN45545-2.

[Learn more](#) →



## CTS-120

Our DC/DC converter, delivering up to 140W of power, meets the rigorous standards outlined in EN50155, catering to both industrial and railway applications. Each model includes remote inhibit and alarm options for added functionality.

[Learn more](#) →



## CKR-2000

This product series is tailored for applications demanding utmost reliability. It comprises modular DC/DC converters, enabling the installation of a set of up to 8 modules of 240W or 280W within a 19" subrack.

[Learn more](#) →



## CRS-120

Our product series offers a range of DC/DC converters up to 140W, featuring diverse input/output configurations. Renowned for their durability, these converters are suitable for a wide array of rigorous industrial applications.

[Learn more](#) →

## FREQUENCY CONVERTER



## CF Series

The CF series of frequency converters offers the ultimate in terms of quality and reliability. LAYER ELECTRONICS recommends the CF series of frequency converters to all those driven by professional needs who therefore need very high performance products.

[Learn more](#) →



## CFA Series

The CFA series of frequency converters for alternators is Layer's most recent development in frequency converters field. The main feature that makes the CFA series of frequency converters for alternators unique is its capability to give a stable requested frequency in output when the input frequency is variable over big ranges.

[Learn more](#) →

DC UPS & BATTERY CHARGERS

SMPS TECHNOLOGY



**CB Series**

Those requiring just a system for recharging and maintaining lead batteries charged which does not provide a complex power supply recharging system with back-up modulus, will find the CB series a reliable, state-of-the-art solution. This range is used for the same applications as the "CBI - All in One" range, yet solely for recharging.

[Learn more](#) →



**CBI Series**

This is a revolutionary line designed to provide uninterruptible power, whatever the system conditions are, through a sophisticated and completely automatic management of any type of industrial battery.

[Learn more](#) →

DC UPS & BATTERY CHARGERS

THYRISTOR TECHNOLOGY



**UC Series**

The UC power supplies / DC UPS use thyristors technology, providing high reliability under the most difficult operating conditions, such as lightning and sudden temperature changes.

[Learn more](#) →

AC UPS



**Proton Series**

LAYER ELECTRONICS recommends its PROTON industrial UPS, which retains the main characteristics of our machines designed mainly for professional use, to anyone who needs a high level of stored energy time.

[Learn more](#) →



**Mizar Series**

Mizar Series industrial UPS are ideal for the protection of end users. LAYER ELECTRONICS recommends this product to all those driven by professional needs who therefore need very high-performance products.

[Learn more](#) →



**Futura Series**

The highly advanced industrial UPS of the Futura series by LAYER ELECTRONICS are developed in way to ensure total security from problems related to mains.

[Learn more](#) →

POWER QUALITY

POWER FACTOR CORRECTION



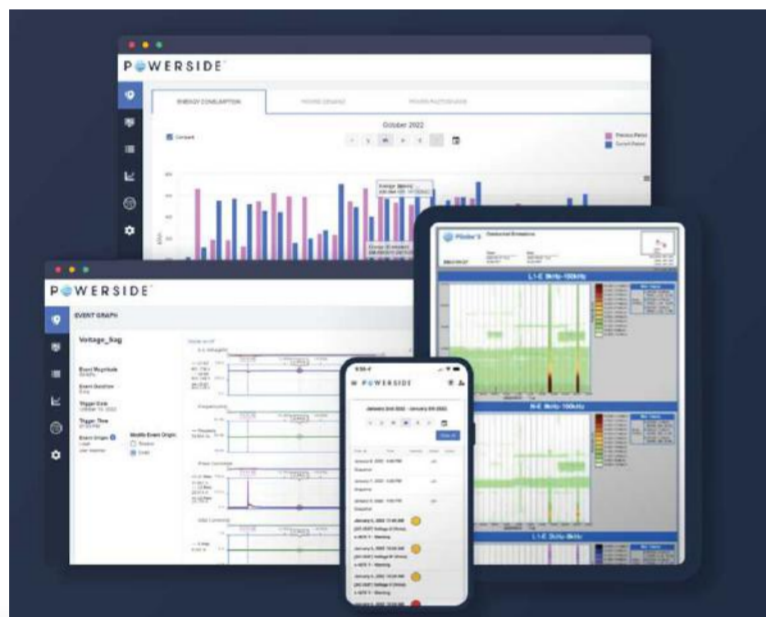
**PowerAct Low Voltage Active Filter**

Protect your essential systems from harmful electrical distortions that waste energy and damage equipment.

[Learn more](#) →

POWER QUALITY

CLOUD SOFTWARE SOLUTION



**QubeScan: Your Comprehensive Power Quality Monitoring Solution**

This intelligent, secure AWS cloud platform offers immediate, remote visibility into comprehensive power quality data from all your PQ Edge® and PQube® 3 analyzers. Monitor your system 24/7, even from your mobile device.

[Learn more](#) →

POWER QUALITY

POWER QUALITY MONITORS



**PQUBE 3 Power Analyzer**

The PQube 3 series are Class A certified, high-speed revenue-grade power analyzers that identify, measure, and record power quality disturbances and environmental process parameter data in real-time.

[Learn more](#) →



**PQ EDGE Power Analyzer**

In critical sectors like data centers and medical imaging, the reliability of high-tech electronics is paramount and it hinges on power quality. Inferior or unreliable power, characterized by transients, harmonics and distortions, can lead to big problems like outages, flicker, equipment damage, loss of revenue and more.

[Learn more](#) →

PROTECTIVE DEVICES

SURGE PROTECTIVE DEVICE



**SPDs for DC and Photovoltaics Systems**

Direct current SPDs are a voltage limiting SPDs providing a single mode of protection, typically installed in DC Distribution Boards (DB)

[Learn more](#) →



**Isolating Spark Gaps**

Isolated Spark Gaps are in accordance with the standards EN 50164-3 / IEC 62561-3 and are used for indirect bonding of a lightning protection system to nearby metal systems, where a direct bond is not permissible for functional reasons

[Learn more](#) →



**SPDs For AC With Additional Interference Filter**

The impact of data center outages or even damage demands comprehensive protection measures. Atmospheric overvoltage and high frequency electromagnetic interference can cause "catastrophic" incidences, thus good and effective protection is essential.

[Learn more](#) →



**SPDs for LED Lighting**

LLP (LED Lighting Protection) system is a ready-to-install assembly of a voltage limiting and a voltage switching SPD, providing two modes of protection in a protective housing for the installation inside the opening at the pole base

[Learn more](#) →



**SPDs for Data Transmission**

SPDs for the protection of network equipment (HUBS/SWITCHES) in structured cabling systems in category 6. SPDs with impulse ratings for categories C1, C2, C3 and D1 (according to IEC/EN 61643-21).

[Learn more](#) →



**SPDs For Low Voltage AC Applications**

Typical use: in TN-C, TN-S, TT- or IT-systems with connection type CT1 (4+0, 3+0 and 2+0) or with connection type CT2 (1+1 or 3+1 connection) according to HD 60364-5-534.

[Learn more](#) →



**SPDs for Signalling and Telecommunications Networks**

Typical installation: in series with the signaling/telecommunication circuits for equipment with "low resistibility" according to Recommendation ITU-T K.45 / "low surge immunity" according to IEC/EN 61000-4-5.

[Learn more](#) →

PROTECTIVE DEVICES

SURGE ARRESTERS



**PA Surge Arrester**

The PA Surge Arrester is a state-of-the-art solution for protecting medium voltage distribution systems from power surges. Featuring advanced metal oxide (MO) resistors without spark gaps, this surge arrester is directly molded in a robust silicone housing for superior performance and durability.

Key Features:

Advanced MO Technology: Utilizes metal oxide resistors to ensure reliable protection without the need for spark gaps.

Durable Silicone Housing: Directly molded in grey LSR (Liquid Silicone Rubber) silicone for exceptional insulation and weather resistance.

IEC 60099-4 Compliance: Designed according to IEC 60099-4 Ed.3.0 standards, ensuring high quality and reliability.

[Learn more](#) →

INDUSTRIAL BATTERY



**AGM VRLA BATTERY**

EnerRocket's features are uniquely designed and highly compatible to support your critical applications, making it the industry's most cost effective and efficient solution.

[Learn more](#) →



**LOMAIN Ni-Cd Batteries**

GAZ LOMAIN extreme low maintenance Ni-Cd Batteries provide a 20 year service lifetime.

[Learn more](#) →



**Vented Ni-Cd Batteries**

GAZ Vented Baseline for all battery applications, designed with the best of Ni-Cd provide a 20-year service lifetime.

[Learn more](#) →



**SOL G Ni-Cd Batteries**

The GAZ SOL G range has been specifically developed for renewable energy applications and in particular solar energy systems.

[Learn more](#) →



**Lithium Iron Phosphate Batteries**

Haidi Energy is one of the leading lithium battery manufacturers and high-tech companies in China.

[Learn more](#) →



**DC-AC INVERTERS**



**ODX-6000**

This industrial and railway inverter leverages silicon carbide (SiC) technology, renowned for its high density and efficiency reaching up to 94.3%. Operating seamlessly at high temperatures, high power, and high frequencies, these units prioritize minimizing energy loss.

[Learn more](#) →



**ODX-4500**

The ODX-4500 three-phase sinusoidal DC/AC inverters series offers up to 4500VA. It has a soft start and is programmable via RS232. These inverters are ready to work under harsh conditions thanks to their robustness and reliability.

[Learn more](#) →



**ODX-3000**

Our product is a versatile three-phase 3000VA DC/AC inverter designed to cater to a broad spectrum of industrial and railway applications, adhering to the 50155 standard. Featuring a true sine wave output voltage and high power density, it excels in harsh environmental conditions while maximizing efficiency.

[Learn more](#) →



**ODS-750**

Our product is a sine wave, single-phase DC/AC inverter series, offering power ranging from 450W to 750W. Available with either 120Vac or 230Vac output options, it accommodates a wide range of input voltages, including 12V, 24V, 36V, 48V, 72V, and 110Vdc.

[Learn more](#) →



**OPS-260**

This inverter is engineered to deliver maximum performance while ensuring high levels of protection, boasting an IP66 rating for rugged durability. Compliant with IP66 normative protection standards, it offers robust resistance to harsh environments.

[Learn more](#) →



**ODS-1500**

Our product is a series of single-phase sinusoidal DC/AC inverters providing up to 1500W of active power. Offering adjustable output voltage and frequency, and an input voltage range from 12Vdc to 110Vdc, these inverters allow for various input-output configurations.

[Learn more](#) →



**ODX-1300**

Our product is a three-phase sinusoidal DC/AC inverter delivering 1300VA, featuring various input-output configurations to suit diverse needs. Designed to power industrial equipment, these models are also suitable for motor control, with a version available for railway applications compliant with EN50155 standards.

[Learn more](#) →



**ODS-3000**

Our product is a single-phase sinusoidal 120Vac or 230Vac DC/AC inverter series, delivering up to 4000VA. Featuring galvanic isolation for input and output signals, the output voltage can be adjusted via RS232

[Learn more](#) →



**OCS-260**

A High power Railway & Industrial 260VA DC/AC Inverter, the OCS-260 series is composed of sinusoidal inverters of up to 260VA apparent power and is presented in a very compact format. We have the rail version (EN50155) and offer multiple mounting options.

[Learn more](#) →

**DC-AC INVERTERS**



**ISLAND Series**

LAYER ELECTRONICS recommends its ISLAND series of inverters, which is a high technology product, to anyone who needs AC where the public grid is not present. Designed to be fed by different input voltages on customer's request, the ISLAND series of inverters supplies a sine wave output voltage with very low distortion. The high frequency-based conversion and the implemented topology allow a high efficiency of the inverters.

[Learn more](#) →



**CSI Series**

This rugged DC-AC inverter utilizes our field proven, microprocessor-controlled CSI 111 high frequency PWM technology to generate the required output power with pure sine wave output voltage. It is based on a mature design topology with a track record in numerous applications.

[Learn more](#) →

**EV CHARGERS**

**AC CHARGERS**



**Porty (Portable AC Charging)**

Small and compact portable AC charging station allows charging of your car's battery through one of numerous changeable connectors - through standard power grid or a socket charging station. You can set up an output current with a button on a charging station itself.

[Learn more](#) →



**Homebox (Home AC Charging Station)**

Charging has never been easier! Comfortable and easy to use home charging station with smart features, that allows you to charge your car at your house. Station includes OCPP protocol and WiFi module.

[Learn more](#) →

**EV CHARGERS**

**DC CHARGERS**



**RapidBox (Compact DC Charging Station)**

Fast charging station in a compact build can charge directly the battery of your electric vehicle with a power of 30 kW. Charging is possible with a CCS Combo 2 connector. Configuration of the station is possible with a keyboard and a display.

[Learn more](#) →



**Rapid (DC Charging Station)**

Fast charging station that allows you to charge two electric vehicles at the same time with connectors CCS Combo 2. Station includes built-in online connection through ethernet cable, OCPP protocol and certified energy meter.

[Learn more](#) →

## INSULATED COPPER FLEXIBLE BAR



### COFLEX

COFLEX is an advanced, insulated copper flexible bar designed for superior flexibility and reliable electrical connections in various applications.

[Learn more](#) →



### COFLEX PLUS

COFLEX PLUS is a high-performance variant of the standard COFLEX flexible bars, designed for greater reliability and safety. It's halogen free, flame resistant and grants low smoke emission.

[Learn more](#) →



### COFLEX COLOR

COFLEX COLOR offers customizable color lines for phase identification or aesthetic purposes.

[Learn more](#) →

## BRAIDED SHUNTS



### J-LINK

The standard version of J-LINK is equipped with a PVC insulation, offering excellent electrical performance and flexibility.

[Learn more](#) →



### J-LINK PLUS

J-LINK PLUS is the premium variant of the J-LINK shunt, featuring halogen-free TPE insulation that offers enhanced safety with low smoke emission and resistance to higher temperatures.

[Learn more](#) →



### J-LINK COLOR

J-LINK COLOR adds a visual identification feature to the standard J-LINK shunt, using colored lines for phase identification or aesthetic purposes.

[Learn more](#) →

## SPECIAL CONNECTIONS



### BRAIDED POWER SHUNTS

Braided Power Shunts are specialized connections designed for custom electrical applications. These shunts are highly flexible and offer superior electrical performance, making them suitable for high-current connections in tight spaces.

[Learn more](#) →



### LAMINATED POWER SHUNTS

Laminated Power Shunts are robust, high-current connections made from laminated copper. These shunts are ideal for applications where high current capacity and reliability are critical.

[Learn more](#) →

**BRAIDS**



**STANDARD EARTHING**

Standard Earthing Braids are prefabricated for general grounding applications in electrical installations. These braids are made from high-conductivity tinned copper and are designed to provide reliable earthing connections

[Learn more](#) →



**TINNED COPPER**

Tinned Copper Braids in Coils are continuous lengths of copper braid that have been tinned to provide enhanced corrosion resistance

[Learn more](#) →



**BARE COPPER**

Bare Copper Braids in Coils are continuous copper braids without any coating, offering excellent conductivity and flexibility.

[Learn more](#) →



**INSULATED BRAIDS IN TINNED COPPER**

Insulated Braids in Tinned Copper are flexible copper braids with a protective insulation layer, offering enhanced protection and durability for electrical connections, grounding, and bonding applications.

[Learn more](#) →



**Tubular Braids in Tinned Copper**

Tubular Braids in Tinned Copper are flexible, hollow braids that can be used for various shielding, grounding, and protective applications in electrical installations.

[Learn more](#) →

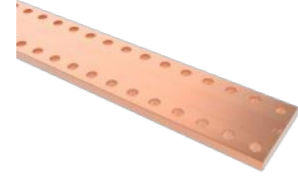
BARS AND ACCESSORIES



**Threaded Copper Bars**

Threaded Copper Bars are designed to provide secure and efficient electrical connections in high-current applications.

[Learn more](#) →



**Prepunched Copper Bars**

Prepunched Copper Bars come with holes pre-drilled to match common electrical installation configurations.

[Learn more](#) →



**Solid Copper Bars**

Solid Copper Bars are robust and versatile components used for electrical busbars, grounding, and other high-current applications

[Learn more](#) →



**Solid Aluminium Bars**

Solid Aluminium Bars provide a lightweight alternative to copper bars while still offering excellent electrical conductivity.

[Learn more](#) →

ACCESSORIES FOR BAR



**Direct Hook-up Distribution Block on Copper Bars**

Direct Hook-up Distribution Blocks are designed to connect multiple electrical circuits directly onto copper bars without the need for additional terminals or connectors.

[Learn more](#) →



**Terminals for cables**

Terminals for cables are used to securely connect cables to copper or aluminium bars, ensuring a reliable electrical connection

[Learn more](#) →



**Terminals with Clip**

Terminals with Clip are designed to provide a quick and secure connection of cables to bars, utilizing a clipping mechanism for easy installation.

[Learn more](#) →



**Spider Connectors For Threaded Bar**

Spider Connectors are used to connect multiple threaded bars in a star configuration, allowing for the distribution of electrical current in multiple directions.

[Learn more](#) →



**Busbar Clamps for Solid and Flexible Bars**

Busbar Clamps are used to secure solid or flexible bars in electrical installations, ensuring a stable and secure connection.

[Learn more](#) →



**Bimetallic (Cu-Al) Sheet**

Bimetallic Sheets are used to connect copper and aluminium components, providing a reliable joint that prevents galvanic corrosion.

[Learn more](#) →



**Bimetallic (Cu-Al) Washers**

Bimetallic Washers are used to provide a secure and corrosion-resistant connection between copper and aluminium components.

[Learn more](#) →

**BAR SUPPORTS**



**Ω TOP - Universal Bar Support**

The Ω TOP is a versatile bar support system designed to securely hold copper and aluminium busbars in electrical panels. It accommodates various bar sizes, offering flexibility for different installation needs.

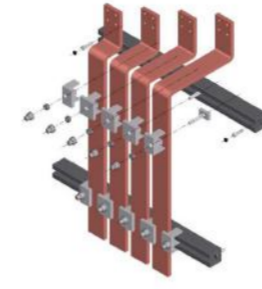
[Learn more](#) →



**Ω TOP - Universal Bar Support**

The Ω TOP JUNIOR is a compact version of the Ω TOP, designed for installations with limited space, offering the same high-strength and insulating properties in a smaller form.

[Learn more](#) →



**Ω FLAT - Bar Support**

The Ω FLAT is designed to hold busbars in a flat, horizontal position, ideal for installations where vertical stacking is not feasible.

[Learn more](#) →

**INSULATORS**



**Ω COMPRHEX Insulators in Polyester**

Ω COMPRHEX insulators are high-performance insulating components made from durable polyester. These insulators are specifically designed for use in electrical panels, switchgear, and other applications where both electrical insulation and mechanical strength are required. Polyester, known for its resilience, ensures that these insulators can withstand significant mechanical stress while providing excellent electrical insulation.

[Learn more](#) →



**Ω ISO - Insulators in Polyamide**

Ω ISO insulators are made from polyamide, a material known for its excellent insulating properties and high-temperature resistance. These insulators are ideal for use in environments where both mechanical support and electrical insulation are critical. Polyamide's inherent strength and flexibility make it a preferred choice for a wide range of electrical applications.

[Learn more](#) →



**Polyamide Spacing Columns**

Polyamide spacing columns are designed to maintain proper spacing between electrical components, ensuring that there is no unintended contact between conductive parts. These columns are made from non-conductive polyamide, which offers excellent electrical insulation while providing mechanical support.

[Learn more](#) →

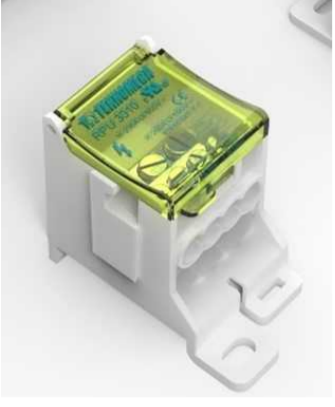


**Polyester Spacing Columns**

Polyester spacing columns are designed for use in environments that require higher mechanical strength and durability. These columns provide robust support and reliable insulation, making them suitable for industrial applications where mechanical stress and environmental exposure are greater.

[Learn more](#) →

TERMINAL BLOCKS



**Ω BLOCK - Single Pole Distribution Blocks**

The Ω BLOCK Single Pole Distribution Blocks are designed to distribute power across a single circuit or pole. These blocks are ideal for isolating individual circuits, allowing for straightforward management and reliable power distribution in various electrical setups.

[Learn more](#) →



**Ω BLOCK - Two Pole Distribution Blocks**

Ω BLOCK Two Pole Distribution Blocks are designed to handle and distribute electrical power across two poles, making them suitable for balanced distribution in systems requiring dual-circuit management.

[Learn more](#) →



**Ω BLOCK - Three Pole Distribution Blocks**

Ω BLOCK Three Pole Distribution Blocks are used to manage and distribute power across three circuits or poles. These blocks are ideal for more complex electrical systems that require multi-circuit management.

[Learn more](#) →



**Ω BLOCK - Four Pole Distribution Blocks**

The Ω BLOCK Four Pole Distribution Blocks are designed to distribute electrical power across four circuits or poles, making them ideal for complex electrical systems requiring multiple circuit management. These blocks offer comprehensive distribution capabilities in a compact design.

[Learn more](#) →



**Quick ΩBLOCK**

The Quick ΩBLOCK Distribution Block is designed for rapid installation, reducing setup time in complex electrical systems.

[Learn more](#) →



**Power Terminal Blocks**

Power Terminal Blocks are used to securely connect and manage high-current electrical circuits.

[Learn more](#) →



**Ω BLOCK - Insulated Terminal Blocks**

The Ω BLOCK Insulated Terminal Blocks are designed for secure and efficient wire connections in electrical panels.

[Learn more](#) →

**BRASS TERMINAL BLOCKS**



**Earthing terminals**

Earthing terminals are designed to provide secure connections for earthing conductors within electrical panels and systems. These terminals are constructed to ensure a reliable grounding connection, helping to prevent electrical faults and enhance safety.

[Learn more](#) →



**Earthing Terminals with Connections for Housing**

These terminals are specifically designed for earthing applications where connections need to be housed within electrical enclosures. They offer additional features such as extended connectivity and enhanced insulation for safe and organized installations.

[Learn more](#) →



**Double-Connection Terminal Blocks**

Double-connection terminal blocks are designed to provide two separate connections per terminal, allowing for more flexible and complex wiring configurations. These blocks are ideal for applications requiring multiple connections within a compact space.

[Learn more](#) →

**WIRING SLEEVES AND TOOLS**



**Polyester Braided Sleeve**

The Polyester Braided Sleeve is a versatile and durable tubular sleeve made from braided polyester monofilament. It is ideal for protecting electrical cables in various applications, offering excellent resistance to abrasion and chemicals.

[Learn more](#) →



**Wrapflex Self-Closing Polyester Sleeve**

The Wrapflex Self-Closing Polyester Sleeve is an openable braided sleeve made from a combination of polyester monofilament and multifilament. It features a "memory effect" that allows it to close back immediately after being opened, making it ideal for retrofitting and protecting already wired cable bundles.

[Learn more](#) →



**Fiberglass Coated with Silicone Rubber**

This wiring sleeve is made from fiberglass coated with silicone rubber, providing excellent electrical insulation and resistance to high temperatures. It is suitable for demanding environments where protection against heat and UV exposure is critical.

[Learn more](#) →



**Fiberglass Braided Sleeve**

The Fiberglass Braided Sleeve is constructed from woven glass fiber filaments, forming a tubular structure that is subsequently impregnated with a water-based varnish. It is designed to offer high resistance to heat and mechanical stress, making it suitable for environments with extreme temperatures.

[Learn more](#) →



**Spiral Sleeve**

The Spiral Sleeve is a flexible and durable protective sleeve made of polyethylene, designed to bundle and protect cable assemblies. It is particularly useful for covering already wired cable bundles, providing organization and protection in various electrical installations.

[Learn more](#) →



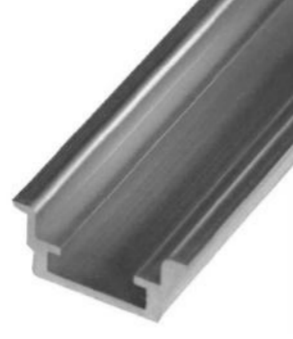
DIN RAILS, TOOLS, HOLDERS, AND ACCESSORIES



**Ω Symmetrical DIN Guides**

Ω Symmetrical DIN Guides are standardized DIN rails that feature a symmetrical profile, often referred to as "Ω." These guides are designed to securely mount modular electrical devices within electrical panels, ensuring easy installation and alignment.

[Learn more](#) →



**Symmetrical Non-Drilled Aluminium DIN Rail**

The Symmetrical Non-Drilled Aluminium DIN Rail is designed for applications that require a lightweight yet sturdy mounting solution. This DIN rail is made from aluminium and features a non-drilled profile, providing a clean and uninterrupted surface for mounting electrical devices.

[Learn more](#) →



**Passivated Galvanized Steel Perforated C Profile**

The Passivated Galvanized Steel Perforated C Profile is a robust DIN rail option designed for creating infrastructures within electrical panels. The perforated design allows for easy mounting of various components and equipment.

[Learn more](#) →



**Cutting Tools**

Cutting & Punching Tools for DIN Rails are specialized tools designed for precise cutting of DIN rails to the desired length and to create precise holes in DIN rails for mounting components.

[Learn more](#) →

**OUR CLIENTS**



**INDUSTRIES**



**OIL & GAS**



**PROCESS INDUSTRIES  
& MANUFACTURING**



**AVIATION**



**MARINE**



**INFRASTRUCTURE**



**UTILITIES**



**AUTOMATION**

**VISIT: [WWW.APPARENTGROUP.AE](http://WWW.APPARENTGROUP.AE)**