

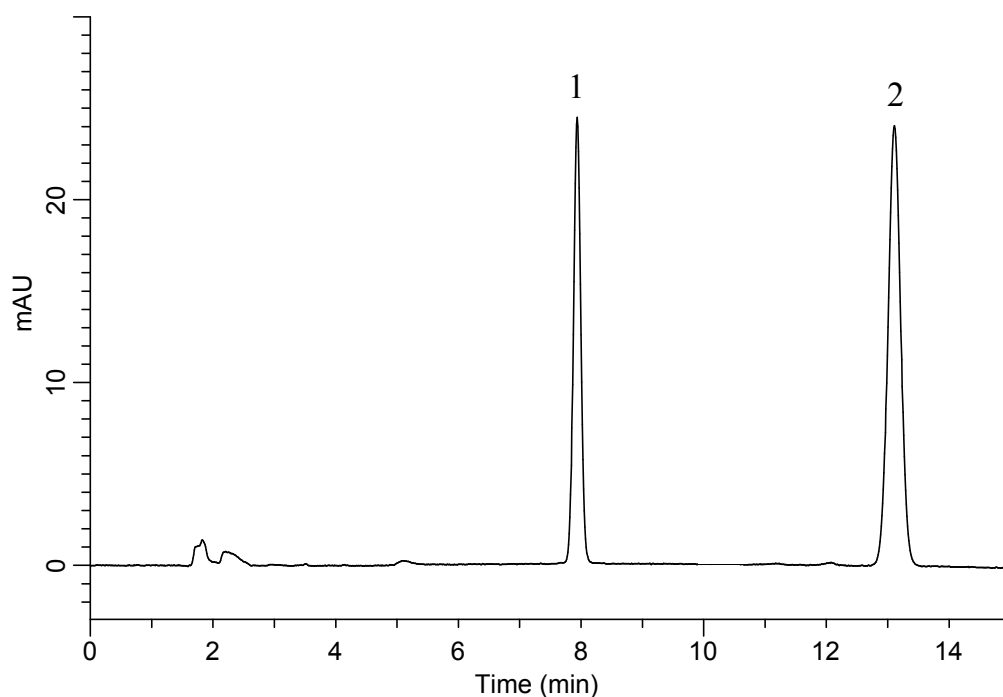
InertSearch™ for LC

Inertsil™ Applications

Analysis of Steviol

(Under the Condition of the JPE (Japanese Pharmaceutical Excipients),
Purified Stevia Extract (4) Steviol)

Data No. LB563-0919



Conditions

System : GL7700 HPLC system
Column : InertSustain AQ-C18
(5 μ m, 250 x 4.6 mm I.D.)
Column Cat. No. : 5020-89731
Eluent : A) CH₃CN
B) 0.1 % H₃PO₄ in H₂O
A/B = 11/9, v/v
Flow Rate : 1.2 mL/min
Col. Temp. : 40 °C
Detection : UV 213 nm (PD7752 PDA Detector)
Injection Vol. : 20 μ L
Sample : Standard

Analyte:

1. 4-*tert*-Butylbenzoic acid 10 mg/L
2. Steviol 50 mg/L

Resolution (1, 2) : 17.1 (\geq 6)