

# APPLICATION GUIDE FOR INTERNATIONAL BACCALAUREATE DIPLOMA PROGRAMME (IBDP) STUDENTS

---

ACADEMIC YEAR 2024-2025

**NATIONAL UNIVERSITY OF SINGAPORE**

OFFICE OF ADMISSIONS | UNIVERSITY TOWN, 2 COLLEGE AVENUE WEST, #01-03, SINGAPORE 138607

## Application Overview

You will need to complete all relevant sections of your application before submitting it online. Do make sure you have sufficient time to apply, submit supporting documents (if applicable) and complete application fee payment by **21 February 2024**.

Please refer to the [Supporting Document Guide](#) for the list of supporting documents to prepare for submission.



The Admissions Selection Committee will review the applicant's academic merit and non-academic achievements before making an offer of admission. Some programmes require additional assessments such as interviews, selection tests and portfolios – you will be notified accordingly if you need to attend one.

The admission offer letter will be available online after you have been offered admission. The offer letter will indicate how and when to reply to the offer. Don't miss the deadline!



Visit the admissions [website](#) for more details. Alternatively, you may send us your questions at [www.askadmissions.nus.edu.sg](http://www.askadmissions.nus.edu.sg)!

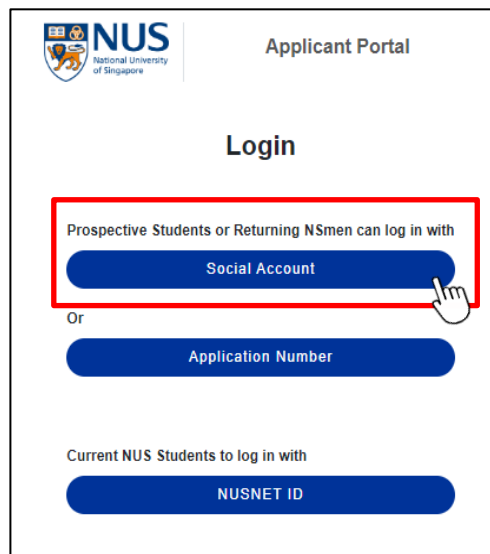
# How to apply?

Here are a few things to note:

- (1) For best user experience, please use **Google Chrome** or **Mozilla Firefox**. Older browsers may experience compatibility issues.

- 
- (2) Applicants can apply via the [NUS Applicant Portal](#). To begin the application, you should log in with your **Social Account**. As you will be logged out if your session idles for more than 30 minutes, using your social account for login ensures that information previously entered can be retrieved when you resume the session again.

You may save your application and return to the application form to complete your submission using the same social account email.



You can use one of the following **social accounts**: Facebook, Google (e.g. Gmail), Microsoft Account (e.g. Outlook or Hotmail) or LinkedIn. If you do not have any of the above social accounts, you may click [here](#) to create an NUS Account for Undergraduate Admission Application.

After submitting your application, you can log in to the [NUS Applicant Portal](#) again by logging in with your **Social Account** or **Application Number** to track your application.

- 
- (3) You can now use **Myinfo** to pre-fill your personal particulars. Myinfo retrieves personal data from relevant government agencies to pre-fill the relevant fields, making the submission of application form faster and more convenient. Click on **Retrieve Myinfo with singpass** to proceed.

The screenshot shows a Singpass consent dialog. At the top, the Singpass logo is displayed in red. Below the logo, the text reads: "Singpass retrieves personal data from relevant government agencies to pre-fill the relevant fields, making digital transactions faster and more convenient." This is followed by a bold statement: "This digital service is requesting the following information from Singpass, for the purpose of NUS Admission". A list of fields to be retrieved is shown, each preceded by a right-pointing chevron: Name, Sex, Date of Birth, Email, Nationality/Citizenship, NRIC/FIN, Registered Address, Mobile Number, Race, Residential Status, and Marital Status. At the bottom of the dialog, there is a line of text: "Clicking the 'I Agree' button permits this digital service to retrieve your data based on the [Terms of Use](#)." Below this text are two buttons: a white "Cancel" button and a red "I Agree" button.

The purpose of using Myinfo is to pre-fill your personal particulars to expedite the processing of your application with accurate data entries, you will only be allowed to make changes to the following fields:

- Marital Status
  - Email
  - Mobile
-

- (4) If you would like to reset the information keyed in your application or have opted to use Myinfo function initially, but would like to redo the application form without pre-filled information retrieved from Myinfo, follow the steps below to reset your application:
- Logout (Logout button on the top right corner of the form)
  - Relog in with the same social account
  - Click on **Delete Draft**, followed by **Continue to apply** to submit a fresh application



- (5) Applicants with a Singapore residential address are encouraged to use the **postal code search function** so that accurate residential address information such as Block/House Number and Street Name can be pre-loaded in one click.

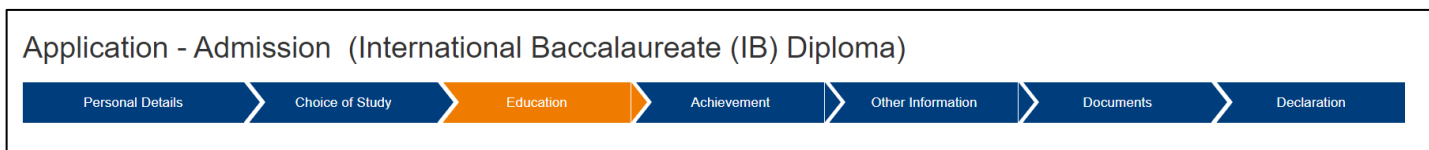


- (6) You may amend information such as contact information, choice of study, achievements, answers to short response questions, interest for NUS College and household income declaration via the [Applicant Portal](#) by 21 February 2024.

- (7) Applicants can select up to 8 choices for the Concurrent Degree (CDP), Double Degree (DDP), Double Majors, Minor and Specialisation Programmes in their NUS application. Based on the Single Degree Programme choices and corresponding preferred majors (applicable to 'Engineering' and 'Humanities and Sciences') applied, you will be able to select from the list of relevant CDPs, DDPs, Double Majors, Minor and Specialisation Programmes.

If you decide to revise your Single Degree programme choice(s) before application submission, you will be required to reselect your DDP, CDP, Double Major, Minor and Specialisation Programmes as your earlier selection will be **reset**. The list of relevant DDP, CDP, Double Major, Minor and Specialisation Programmes for selection will be revised in accordance with the new single degree programme choice(s).

- (8) The top Navigation Bar indicates the sections of the application form. Section in-progress will be in orange.



To ensure that information entered is saved, you are required to click on the **Save and Next** icon to proceed to the next page of the form. To return to the previous page, click on **Back**.



You may use the top Navigation Bar to return to the previous sections of the application form to review or amend any information that you have previously keyed in.

# Application Steps

Application for applicants presenting the International Baccalaureate (IB) Diploma opens from **1 November 2023 to 21 February 2024**.

Follow these instructions to apply. You can only apply once in each academic cycle.

**Start your application** by completing the [online application form](#):



## ● University Candidature

- If you are a current or former university student, you should apply via [www.nus.edu.sg/oam/apply-to-nus/transfer-applicants](http://www.nus.edu.sg/oam/apply-to-nus/transfer-applicants).
- Otherwise, select 'No' to proceed.

## ● Personal Details – Myinfo

- You can pre-fill your personal details using Myinfo that retrieves government-verified data from relevant government agencies.
- Please provide a valid email address and mobile number for the University to contact you if necessary. Applicants who provide a **valid Singapore mobile number** will receive SMS alerts for admission updates (e.g. shortlist notification for interview programmes or admission offer).

## ● National Service (NS) in Singapore

- You should choose "Not Applicable" if you are not required to fulfil the mandatory national service in Singapore.
- If your National Service ORD falls on or before 4 August 2024, select "Completing by commencement of academic year". You may refer to [www.nus.edu.sg/registrar/calendar](http://www.nus.edu.sg/registrar/calendar) for the AY2024/2025 Academic Calendar.

## ● Alternative Contact Information

- A person to contact in case of emergency.

## ● Choice of Study

- You can indicate your interest to be considered for [NUS College](#), the honours college of NUS, in this section. As part of the NUS College selection process, you will be prompted to answer the compulsory NUS College writing prompts at the end of the "Choice of Study" section.
- You can apply for a maximum of **8 Single Degree** programme choices and another **8 Double Degree (DDP), Concurrent Degree (CDP), Double Major, Minor and Specialisation Programmes**.
- Click on "Add Programme" to add your choice of study, and the "+" icon to add additional choices.







- Only students who have selected "Engineering" as one of their Single Degree choice of study, will be asked to indicate if they wish to be considered for Special Programmes offered by the College of Design and Engineering: Engineering Scholars Programme, and Engineering and Medicine (Duke-NUS).

## ● Education – International Baccalaureate

- All applicants sitting for the IBDP May and November exam sessions **must authorise** the International Baccalaureate to release their electronic transcript to NUS. You can do so by informing your school's IB coordinator.
  - Examination sessions November 2023 and earlier – IBDP results must reach us by 21 February 2024, 23:59 Singapore time (GMT+8)
  - Examination session in May 2024 – IBDP results must reach us by 7 July 2024, 23:59 Singapore time (GMT+8)
- Select the name of your school using the dropdown list. If your IB school is located outside of Singapore, select "IB World Schools outside Singapore" and key in the name of your school. Select the corresponding country where your school is located.
- Indicate if you have **retaken** any IBDP exam papers after graduation. If you have selected "Yes", please **re-authorise the IB to release your latest electronic transcript** to NUS. You can place a request with the IB [here](#).
- Provide your **IB Personal Code** to allow NUS to verify your IBDP transcript. For May 2024 examination session applicants, if you do not have your Personal Code at the point of application, please leave it blank. You should update it via the [Applicant Portal](#) by 21 June 2024.
- Add a minimum of 6 IB subjects and their grades by clicking on **Add Subject**.


Subject	Other Subject	Level	Grade
<b>Add Subject</b>			

To edit the subjects, click on the  icon. To delete the subject, click on the  icon.

 	English A: Language and Literature
---	------------------------------------

- If you are applying with Actual Results, select your EE/TOK grades and points.

## ● Education – Secondary Education

- Declare if you have completed your Secondary 4 studies under the Integrated Programme (IP).
- Add your Secondary Education subjects by clicking on the  icon (if applicable).
- Declaration of the relevant Secondary Education subjects is important to fulfil [programme pre-requisites](#) of certain undergraduate programmes.
- You are not required to complete this section if you did not take these subjects.

## ● Education – Other Education

- It is mandatory to declare if you have taken a Singapore-Cambridge GCE Mother Tongue Language subject.
- The other sections are optional.

## ● Achievement

- The University will consider applicants who have demonstrated a strong interest or aptitude for the programmes applied for under the Aptitude Based Admissions Scheme.
- It is mandatory to complete this section by answering all the 5 short response questions.
- You may list up to three achievements/activities in the “List of Achievements” section of the application form.
- If you do not wish to list any achievements/activities, please select the “Not Applicable” option.

## ● Health and Support

- Share if you have any medical condition, mental health condition, physical disability, drug allergy or food allergy.
- The information you provide will help the University understand your needs for support and resources during your studies at NUS. We will use this information to determine the availability of provisions you need to provide you a positive learning experience.

## ● Other Information

- Please indicate if you have been arrested, charged in court, put on probation or convicted of an offence; suspended or expelled from an educational institution; terminated from your employment for any reason; or have any court or disciplinary proceedings pending.
- The information will enable the University to provide support during your studies in NUS. All information submitted will be treated confidentially.

## ● Tuition Grant

- Singapore Permanent Residents and International Students are to indicate their intention to apply for Tuition Grant.
- Singapore Citizens should declare accordingly.

## ● Financial Aid

- This is not an application for financial aid, but for you to indicate your intention to apply for it.
- If you wish to apply for financial aid, please visit <http://www.nus.edu.sg/oam/financial-aid>.

## ● Household Income

- The University is collecting household income information of all applicants to assess the levels of financial aid necessary for needy applicants and to increase the awareness of financial aid. It has no impact or implication on your application outcome.

## ● Documents

- Based on your information declared, you will be prompted to **upload** specific supporting documents to support your undergraduate admission application.
- If you wish to submit additional documents after you have submitted the online application, you may do so via the [Applicant Portal](#) by the application closing date.



### ● Declaration

- Please declare that all information provided in the application form is correct.

### ● Personal Identification Number (PIN)

- You must create a confidential **8-digit alphanumeric PIN**.
- The PIN and Application Number will allow you to log in to the [Applicant Portal](#) to track your application and to submit additional supporting documents online.
- Please record your PIN for future log in purposes.

### ● Application Confirmation page

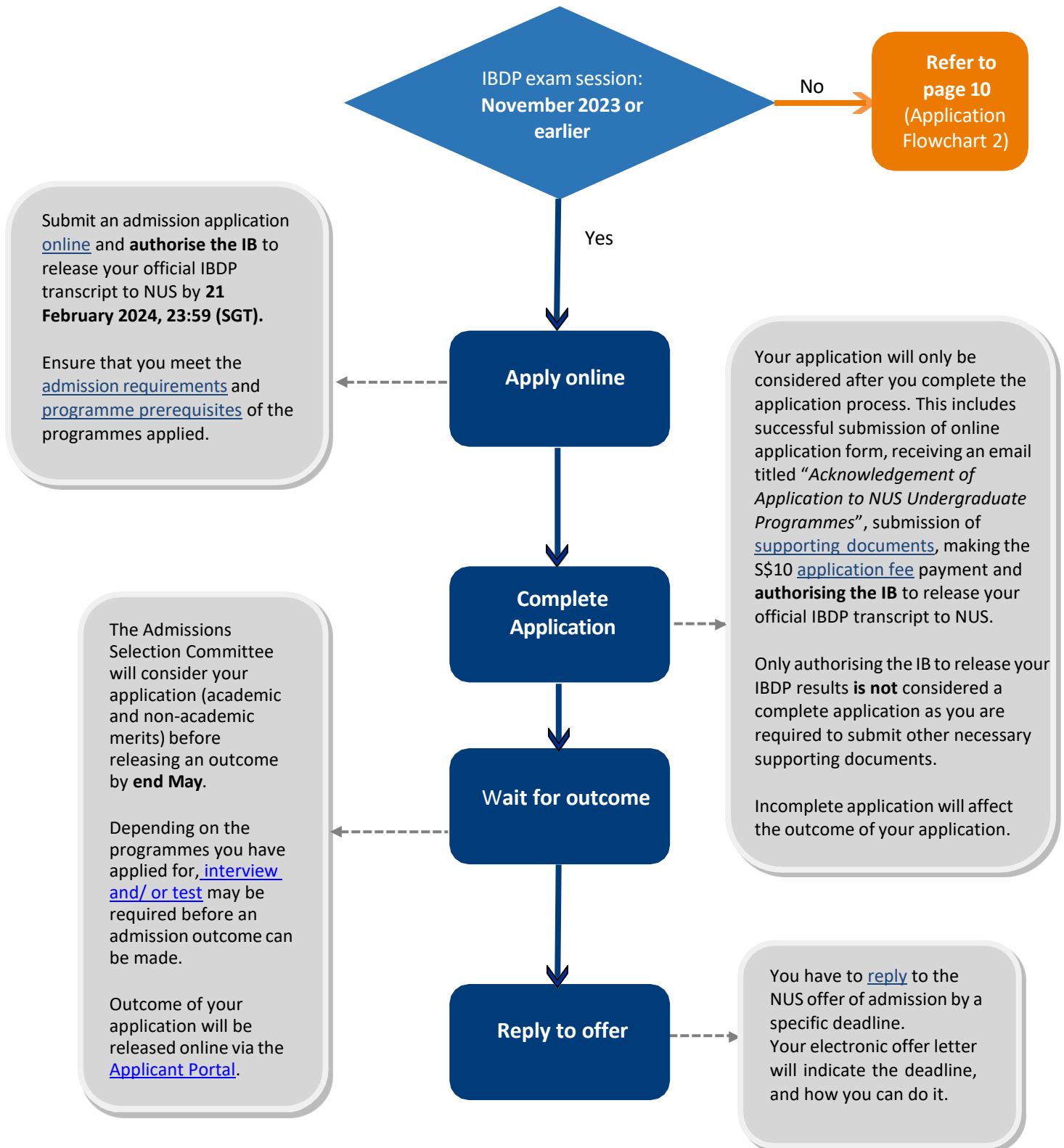
- If you wish to make any amendments, you should click on the **Back** icon and click on the relevant section on the top navigation bar to return to the previous section. After the change is made, click on **Save and Next** icon to save the revised information. Click the **Submit** icon to proceed with the application.
  - **Do check your details before clicking the Submit button.**

### ● Application Acknowledgement - Admission

- Once submitted successfully, your **Application Number** will be displayed.
- A non-refundable [application fee](#) of SGD 10 is payable via various modes.
- You will also receive an email titled “Acknowledgement of Application to NUS Undergraduate Programmes” if your application has been received.

# AY2024 Application Flowchart 1

## (Exam Session: November 2023 or earlier)



## AY2024 Application Flowchart 2 (Exam Session: May 2024)

