

designmi.er

# ABSTRACT









**ABST**

The background is a dark, textured composition. It features several thick, expressive brushstrokes in shades of teal and blue, some of which are curved and overlapping. Scattered throughout the dark field are numerous small, irregular speckles in a muted brown or tan color, creating a marbled or stone-like effect. The overall aesthetic is modern and artistic.

**PRACTI**





# OMBRE LIGHT

Endless relaxing atmospheres...



AB1



A B S T R A C T







## OMBRE CONTRAST

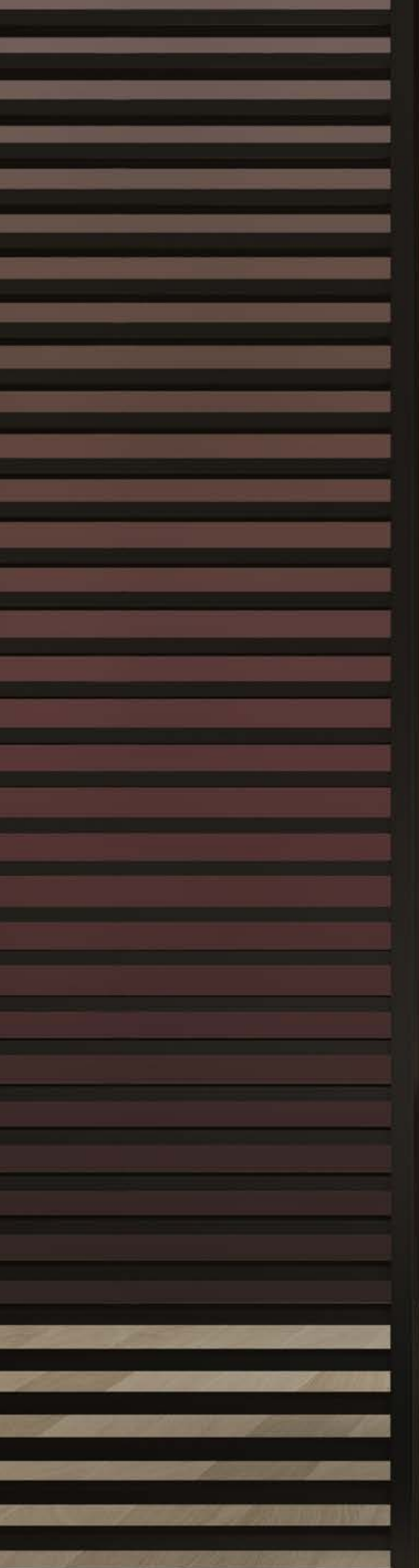
It was designed for relaxing atmospheres - like the endless romance of the setting sun, which plunges from the red sky TONES into the DEEP forest shades.



AB2



A B S T R A C T



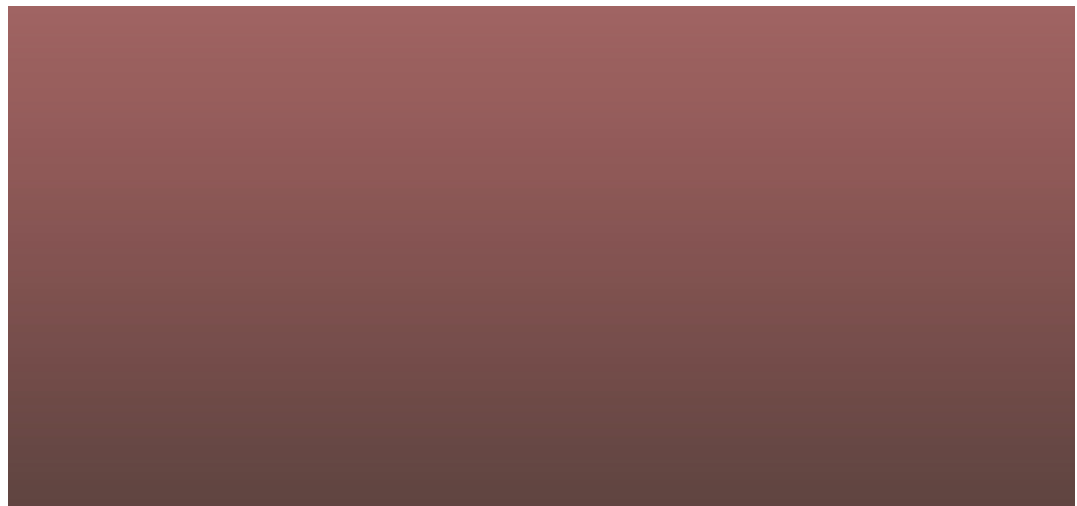


## OMBRE RED

This endless pattern, which is formed by the nuances of dark red tones that evoke the sunsets of India, adds an elegant atmosphere to minimal spaces - with a delicate touch.



AB3

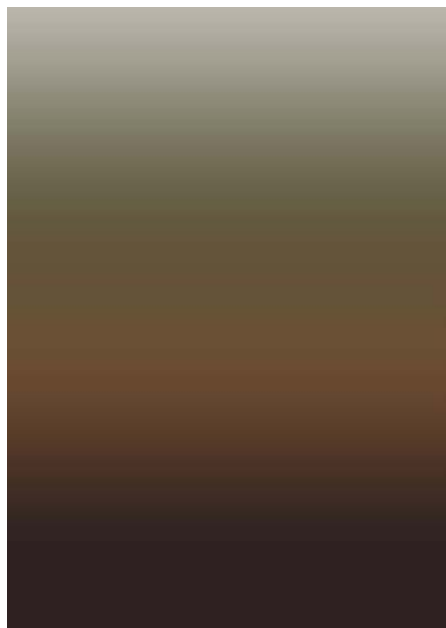


A B S T R A C T

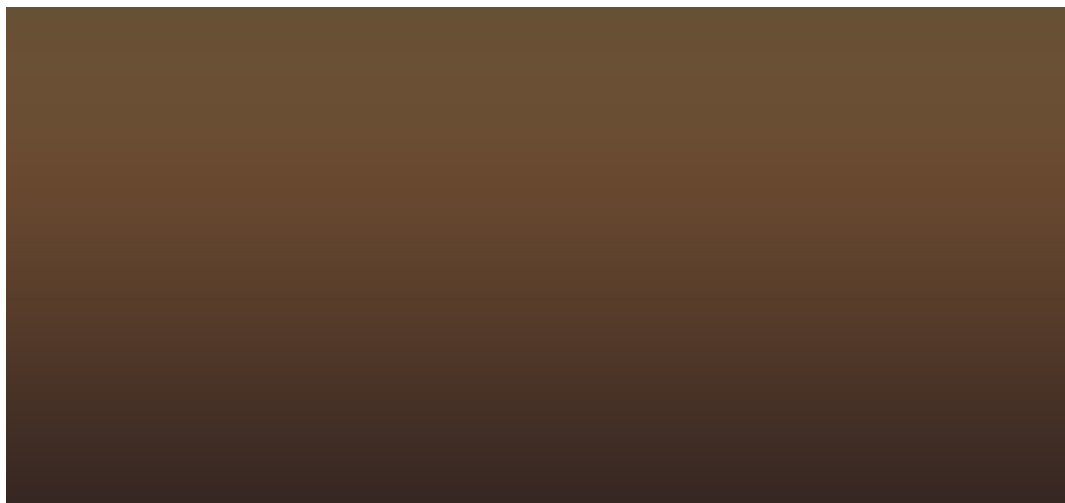




OMBRE DARK



AB4



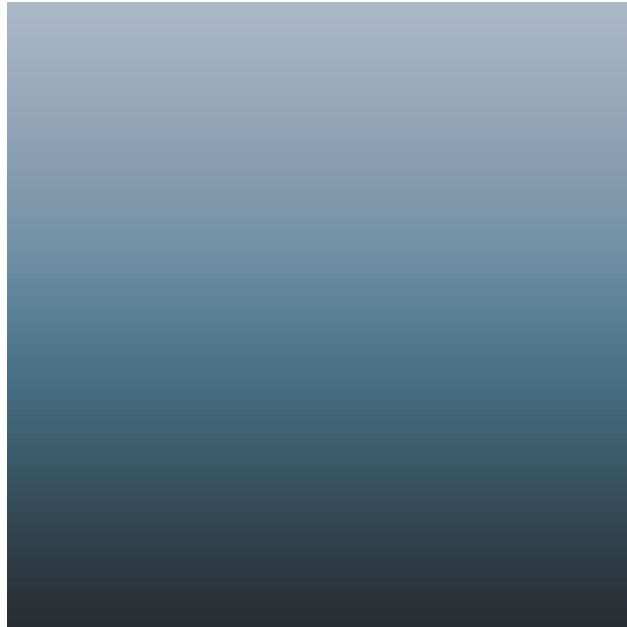
A B S T R A C T





## BLUE OMBRE

It is where the sky meets the sea...  
The soothing tones of blue in harmony with all kinds of spaces...



AB5



A B S T R A C T









**KATLA**



SN01



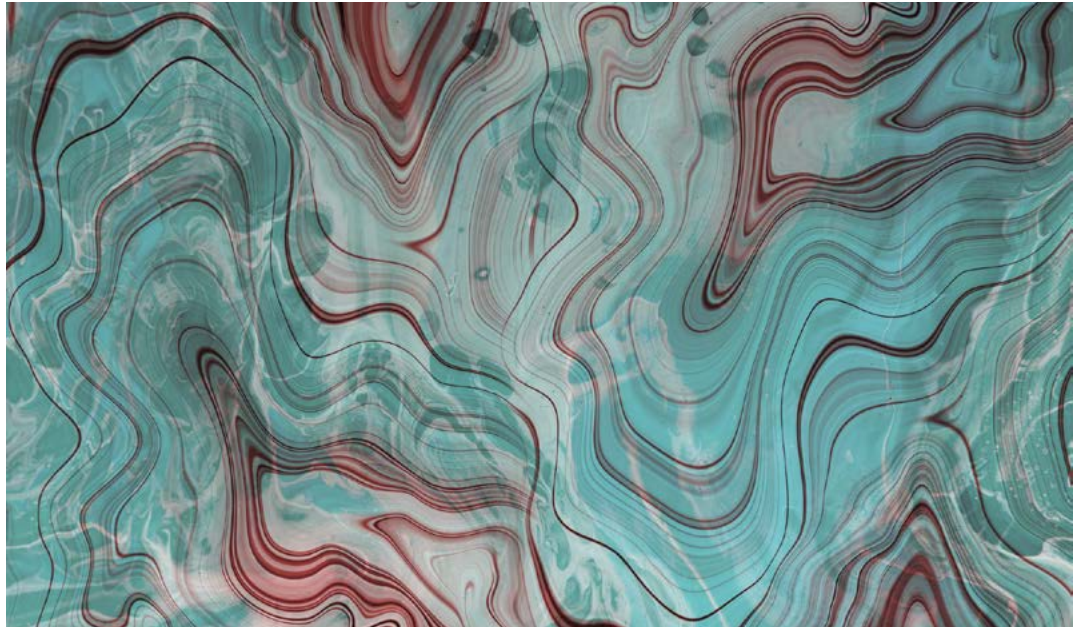
A B S T R A C T



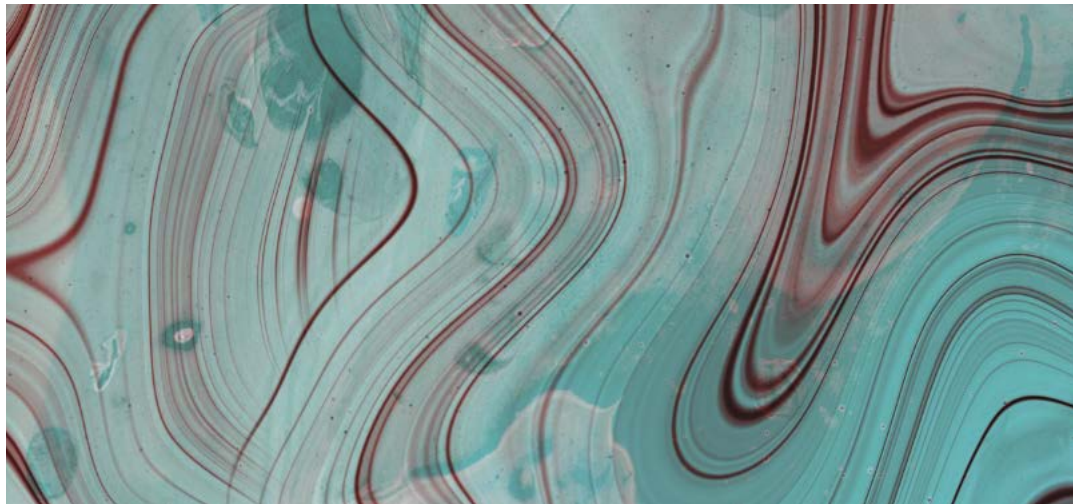


**LAKI**

Emphasizing our admiration for nature, we continue to add value to the spirit of spaces with this collection, which we designed with inspiration from the formation of minerals and precious stones.



SN02



A B S T R A C T





GRIMSVÖTN



SN03



A B S T R A C T





# ASKJA

Creating an abstract, geometric and organic image - like ink drops slowly mixing with water - this pattern is inspired by Icelandic volcanoes.



SN04



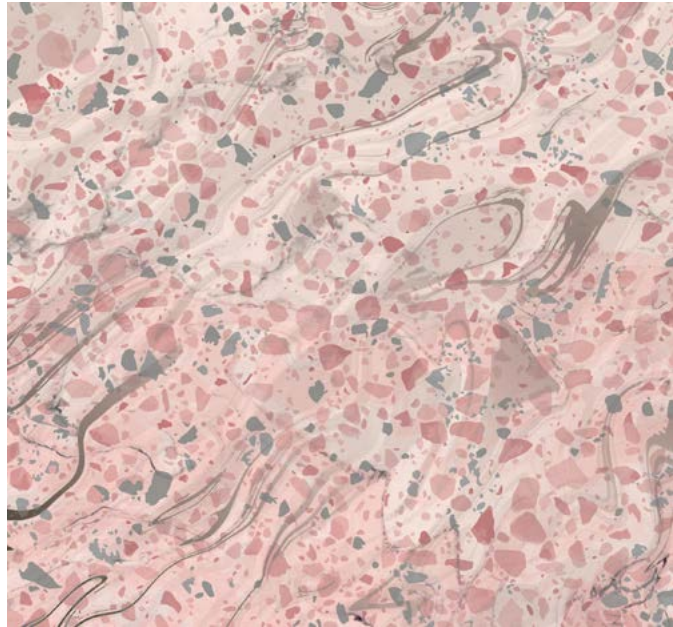
A B S T R A C T







GRIMSNES



SN05



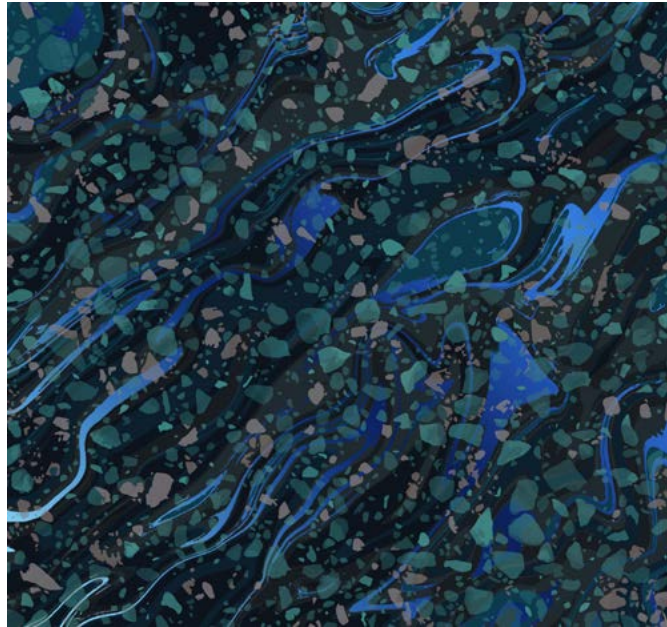
A B S T R A C T



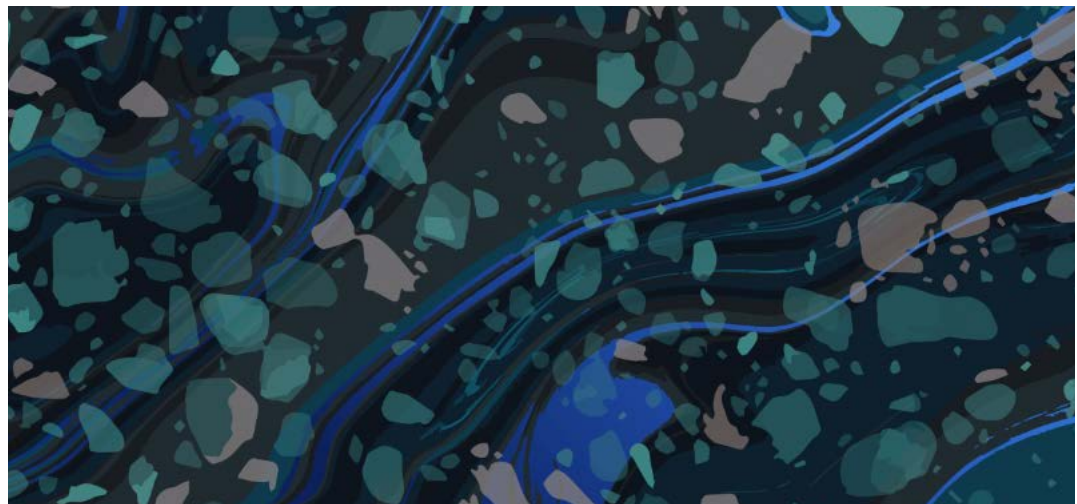


## ELDFELL

Designmixin's interpretation of the classic terrazzo pattern of the 1950s, which was mostly used for flooring.



SN06



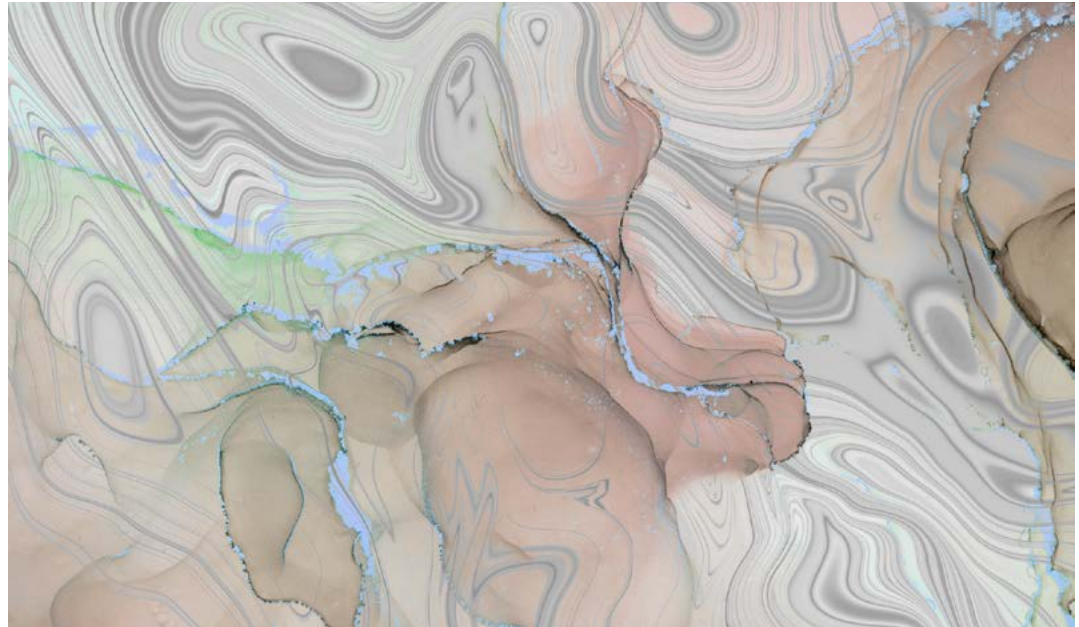
A B S T R A C T



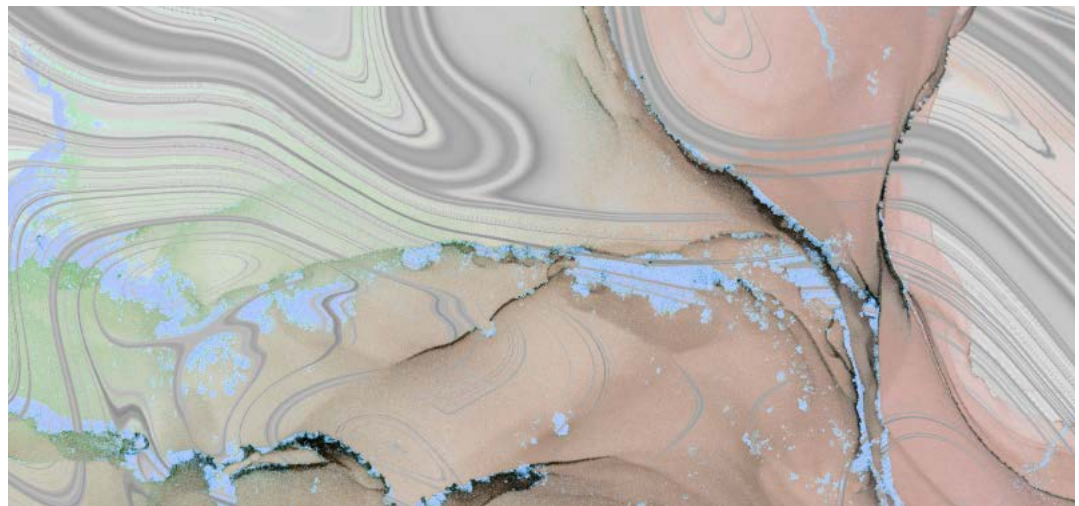


**BURFELL**

To create eye-catching walls and extraordinary spaces, we redesigned the marble pattern, one of the most preferred classical patterns in stylish environments, by synthesizing it with the latest color trends.



SN07



A B S T R A C T





## HENGILL

Like liquid paints in pastel tones blending into each other slowly and harmoniously... This pattern, which resembles an abstract modern painting, carries soft colored waves to the walls - with a fantastic description.



SN08



A B S T R A C T



INSPIRING  
PATTERNS  
WALLS



2:25 / 5:47







INGLY  
RNED  
LS



designmi<sup>er</sup>