



CROSS REACH

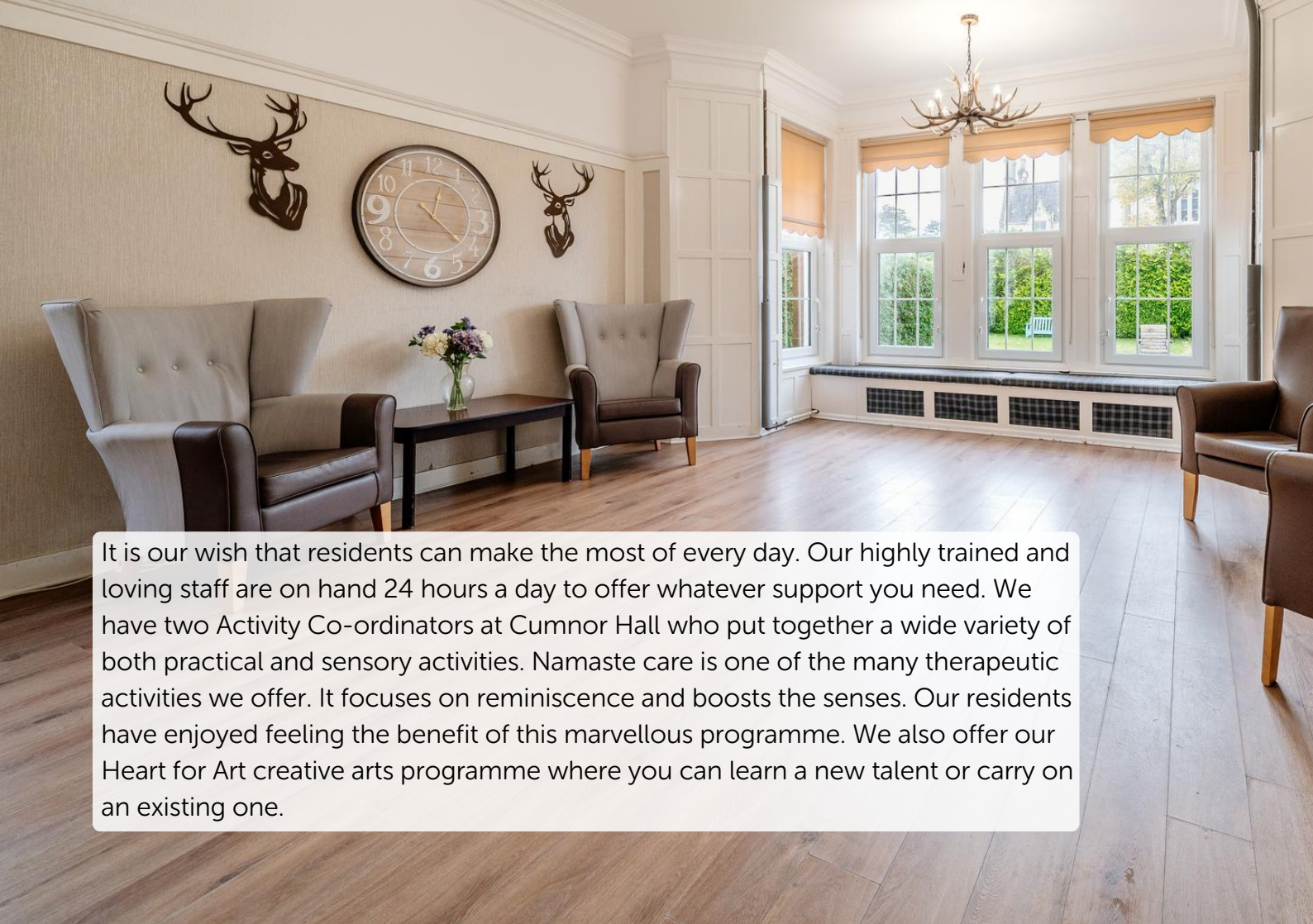
Care you can put your faith in.



Cumnor Hall
Specialist Care Home
for people living with
Dementia

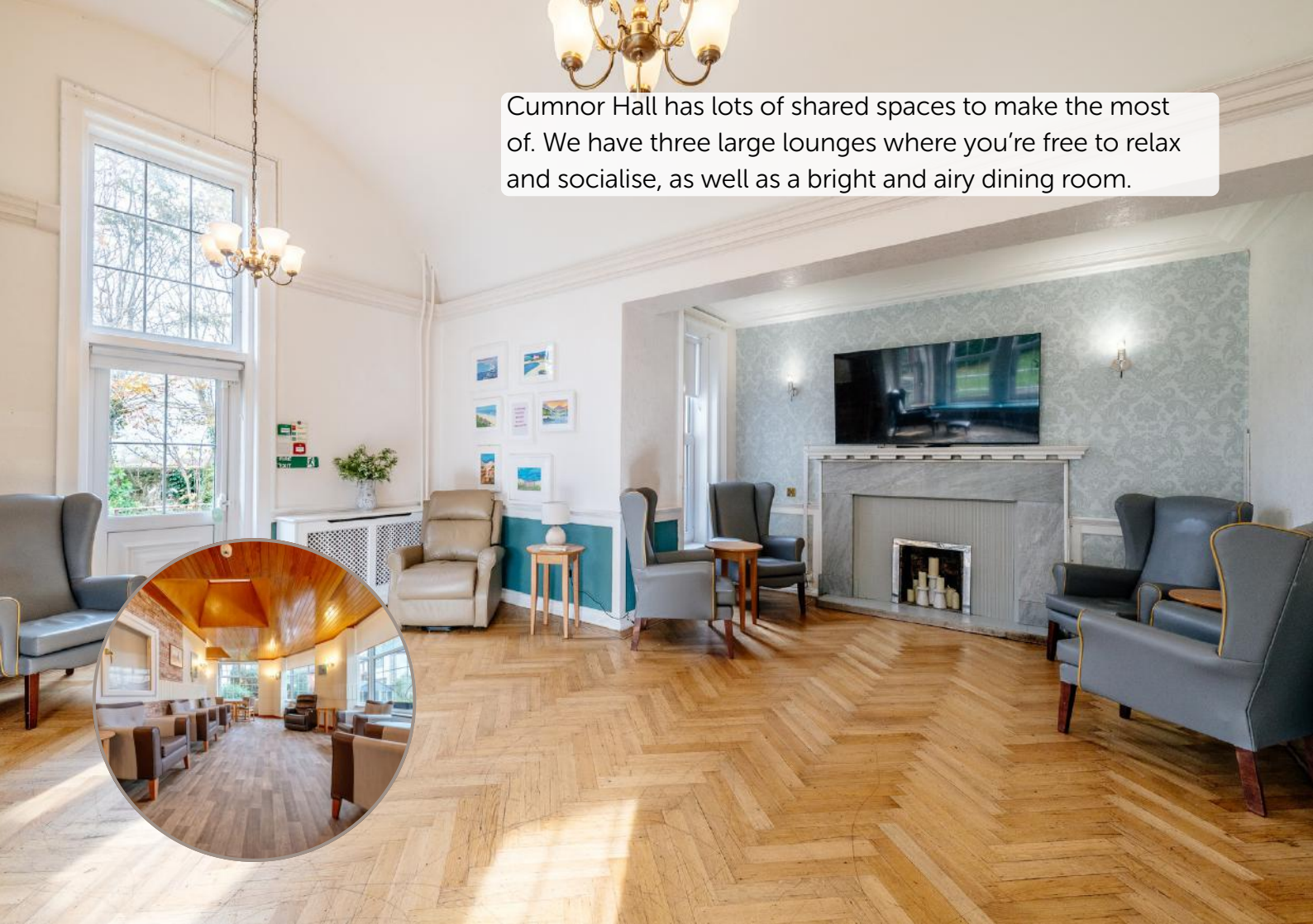


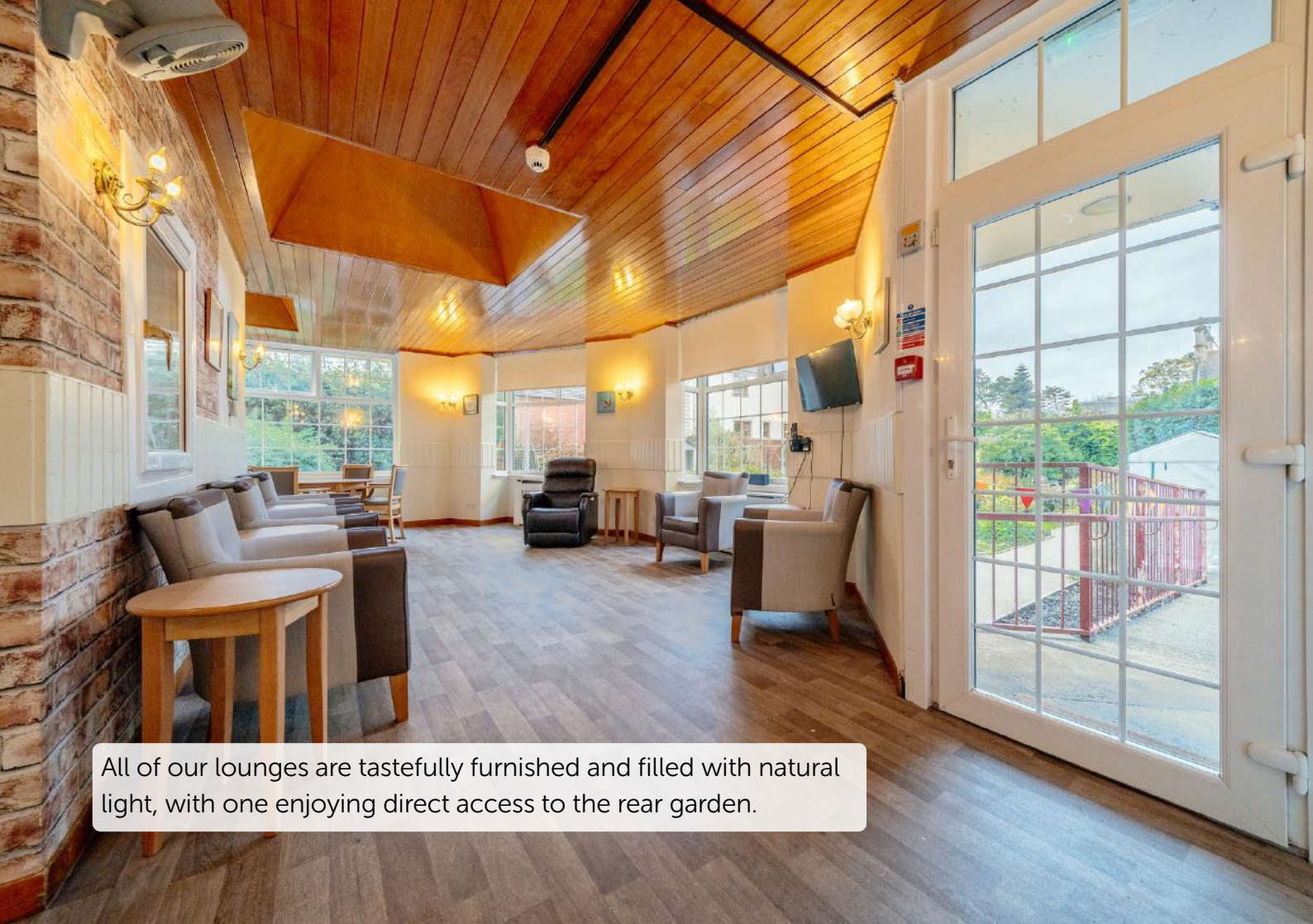
Cumnor Hall is a specialist care home, supporting up to 31 people living with dementia who can no longer live safely at home. Situated in the peaceful town of Ayr, Cumnor Hall is a spacious detached villa, with stunning views that overlook the town's famous 'Old Racecourse'.



It is our wish that residents can make the most of every day. Our highly trained and loving staff are on hand 24 hours a day to offer whatever support you need. We have two Activity Co-ordinators at Cumnor Hall who put together a wide variety of both practical and sensory activities. Namaste care is one of the many therapeutic activities we offer. It focuses on reminiscence and boosts the senses. Our residents have enjoyed feeling the benefit of this marvellous programme. We also offer our Heart for Art creative arts programme where you can learn a new talent or carry on an existing one.

Cumnor Hall has lots of shared spaces to make the most of. We have three large lounges where you're free to relax and socialise, as well as a bright and airy dining room.





All of our lounges are tastefully furnished and filled with natural light, with one enjoying direct access to the rear garden.

We have 30 attractive single rooms and one double bedroom for couples and family – each with en-suite facilities. You are welcome to bring your own furniture to your bedroom to help to create that 'home from home' feeling.



We are fortunate to have spacious and lovingly maintained gardens around the sides and rear of the house. It's here that our residents often spend their time, chatting and relaxing. With lots of garden to enjoy, it's easy to find just the right balance of social activity and restful quiet.



Our staff are chosen because they're warm, generous, caring people who love what they do. But they're also highly trained, to ensure you receive the highest standards of care and the right level of support.



At Cumnor Hall, each resident is treated very much as an individual. When you arrive here, you will be allocated your own key worker who will help you create your personal care plan. This helps us to get to know you and how you like to spend your time. We aim to cater to all your interests and support needs.





We understand the importance of getting to know the families and friends of everybody who moves in. That's why we welcome your input into your loved one's Personal Plan, as well as your participation in activities and initiatives that help improve the lives of all our residents. You're free to visit at any time, just as if it were your relative's own home.



At CrossReach we have been showing the practical side of our Christian faith for over 150 years.

We advocate acceptance, inclusion and diversity at CrossReach. Each and every one of our care homes are open to all and we are proud to support people from all faiths, cultures and backgrounds.

CROSSREACH

Care you can put your faith in

If you have any questions, or you would like to arrange a visit, please get in touch.

01292 266450

cumnorhall@crossreach.org.uk

www.crossreach.org.uk

18 Racecourse View

Ayr

KA7 2TY



The Church of Scotland

Social Care Council

Operating as CrossReach, Scottish Charity No: SC011353

