

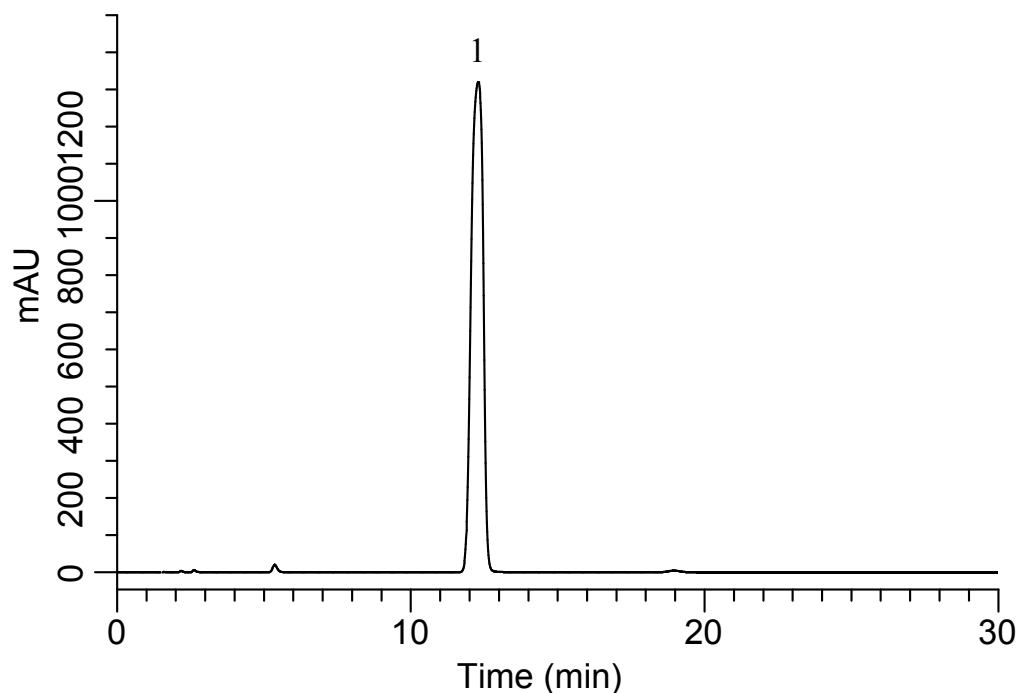
InertSearch™ for LC

Inertsil™ Applications

Analysis of Neotame

(Under the Condition of the JSFA-IX (Japanese Standards of Food Additives))

Data No. LB561-0919



Conditions

System : GL7700 HPLC system
Column : InertSustain AQ-C18
(5 μ m, 100 x 4.6 mm I.D.)
Column Cat. No. : 5020-89728
Eluent : Solution*
Flow Rate : 0.6 mL/min
Col. Temp. : 45 °C
Detection : UV 210 nm (PD7752 PDA Detector)
Injection Vol. : 25 μ L
Sample : Standard

Analyte:

1. Neotame 1000 mg/L

*Dissolve 3.0 g of sodium 1-heptanesulfonate in 740 mL of water, and add 3.8 mL of triethylamine.
Adjust pH 3.5 with phosphoric acid, add water to make 750 mL.
Add 250 mL of Acetonitrile.
Adjust pH 3.7 with phosphoric acid.