



HYDRAULIC HOSE CRIMPERS

PRECISION. POWER. RELIABILITY.
CRIMP WITH CONFIDENCE.



BUILT TO LAST
Heavy-duty
construction for
demanding
environments.



**PRECISION
ENGINEERED**
Accurate crimps
every time.



**MAXIMUM
PRODUCTIVITY**
Fast cycle times
and easy operation.



**QUALITY YOU
CAN TRUST**
Engineered for
professionals.

2026

PRODUCT CATALOG

📍 2460 COMMERCIAL BLVD
STATE COLLEGE, PA 16801
☎ 814-954-5752
🌐 QHHOSESHOP.COM

CC20M-HPC

COMPACT 1-1/4" CRIMPER - HAND POWERED

SMALL, PORTABLE, POWERFUL.
CRIMP WITH CONFIDENCE.



TECHNICAL DATA

CRIMPING RANGE	6 MM - 61 MM
CRIMPING FORCE	137 TON (1370KN)
MAX HOSE SIZE	1" 4 WIRE SPIRAL 1-1/4" 2 WIRE BRAID
TYPE OF DIES	C20
MAXIMUM OPENING	109 MM
MASTER DIE	84 MM
POWER	HAND PUMP
OIL CAPACITY	.5 US GAL
WEIGHT	140 LBS N.W., 220 LBS G.W.
INTERFACE	MANUAL MICROMETER

DIE SIZES

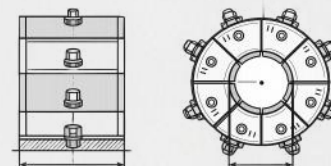
PART NUMBER	DIAMETER (MM)	LENGTH (MM)	CRIMPING RANGE (MM)
C20/6*	6	55	6.0 - 8.0
C20/8*	8	55	8.0 - 10.0
C20/10*	10	55	10.0 - 12.0
C20/12*	12	55	12.0 - 14.0
C20/14	14	55	14.0 - 16.0
C20/16	16	55	16.0 - 19.0
C20/19	19	55	19.0 - 23.0
C20/23	23	55	23.0 - 27.0
C20/27	27	70	27.0 - 31.0
C20/31	31	70	31.0 - 36.0
C20/36	36	75	36.0 - 41.0
C20/41	41	75	41.0 - 47.0
C20/47	47	85	47.0 - 54.0
C20/54*	54	85	54.0 - 61.0

*INDICATES NON-STANDARD DIE SIZE

DIMENSIONS (L X W X H)

MACHINE ASSEMBLED	20" X 16" X 15"
PACKAGE	23" X 22" X 23"
WEIGHT NET	140 LBS
WEIGHT GROSS	220 LBS

DIE DIAGRAM





CC20M-DC

12V DC POWER UNIT

PORTABLE 1-1/4" HOSE CRIMPER

BUILT FOR SERVICE VEHICLES.
CRIMP WITH CONFIDENCE.



12V DC
POWER UNIT



MOBILE SERVICE READY

Designed for service vehicles and field repairs.



12V DC POWERED

Connects directly to your vehicle battery.



COMPACT & PORTABLE

Lightweight design for easy transport and storage.



RELIABLE RESULTS

Consistent, professional crimps every time.



MANUAL MICROMETER ADJUSTMENT

Precise control for accurate crimps.



BUILT FOR FIELD REPAIRS

Durable construction for demanding environments.

TECHNICAL DATA

CRIMPING RANGE	6 MM - 61 MM
CRIMPING FORCE	137 TON (1370KN)
MAX HOSE SIZE	1" 4 WIRE SPIRAL 1-1/4" 2 WIRE BRAID
TYPE OF DIES	C20
MAXIMUM OPENING	109 MM
MASTER DIE	84 MM
POWER	12V DC
OIL CAPACITY	.75 US GAL
WEIGHT	190 LBS N.W., 250 LBS G.W.
INTERFACE	MANUAL MICROMETER

DIE SIZES

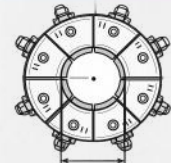
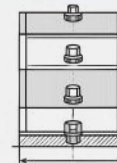
PART NUMBER	DIAMETER (MM)	LENGTH (MM)	CRIMPING RANGE (MM)	PART NUMBER	DIAMETER (MM)	LENGTH (MM)	CRIMPING RANGE (MM)
C20/6*	6	55	6.0 - 8.0	C20/27	27	70	27.0 - 31.0
C20/8*	8	55	8.0 - 10.0	C20/31	31	70	31.0 - 36.0
C20/10*	10	55	10.0 - 12.0	C20/36	36	75	36.0 - 41.0
C20/12*	12	55	12.0 - 14.0	C20/41	41	75	41.0 - 47.0
C20/14	14	55	14.0 - 16.0	C20/47	47	85	47.0 - 54.0
C20/16	16	55	16.0 - 19.0	C20/54*	54	85	54.0 - 61.0
C20/19	19	55	19.0 - 23.0				
C20/23	23	55	23.0 - 27.0				

*INDICATES NON-STANDARD DIE SIZE

DIMENSIONS (L X W X H)

MACHINE ASSEMBLED	20" X 16" X 15"
PACKAGE	23" X 22" X 23"
WEIGHT NET	190 LBS
WEIGHT GROSS	250 LBS

DIE DIAGRAM



QUALITY YOU
CAN TRUST



ENGINEERED FOR
PROFESSIONALS



PERFORMANCE
THAT LASTS

CC20M

AUTOMATIC 1-1/4" HOSE CRIMPER

**BUILT FOR PERFORMANCE.
CRIMP WITH CONFIDENCE.**

INCLUDES:



DIE RACK



DIE QUICK
CHANGE TOOL



FOOT PEDAL



SIMPLE SET UP

Get started fast with easy installation.



RELIABLE RESULTS

Consistent crimps you can count on.



BUILT TO LAST

Durable construction for demanding environments.



1-1/4" CAPACITY

Crimps up to 1-1/4" 4-wire spiral hose.



170 TONS FORCE

Powerful crimping when it matters.



MICROMETER ADJUSTMENT

Precision control for perfect crimps.

TECHNICAL DATA

CRIMPING RANGE	6 MM - 61 MM
CRIMPING FORCE	170 TON (1700KN)
CLOSING SPEED	8 SECONDS
MAX HOSE SIZE	1-1/4" 4 WIRE SPIRAL
TYPE OF DIES	C20
MAXIMUM OPENING	109 MM
MASTER DIE	84 MM
POWER	220VAC 1 PHASE
OIL CAPACITY	8.4 US GAL
WEIGHT	300 LBS N.W., 500 LBS G.W.
INTERFACE	MANUAL MICROMETER

DIE SIZES

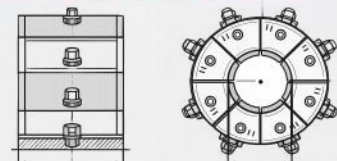
PART NUMBER	DIAMETER (MM)	LENGTH (MM)	CRIMPING RANGE (MM)	PART NUMBER	DIAMETER (MM)	LENGTH (MM)	CRIMPING RANGE (MM)
C20/6*	6	55	6.0 - 8.0	C20/27	27	70	27.0 - 31.0
C20/8*	8	55	8.0 - 10.0	C20/31	31	70	31.0 - 36.0
C20/10*	10	55	10.0 - 12.0	C20/36	36	75	36.0 - 41.0
C20/12*	12	55	12.0 - 14.0	C20/41	41	75	41.0 - 47.0
C20/14	14	55	14.0 - 16.0	C20/47	47	85	47.0 - 54.0
C20/16	16	55	16.0 - 19.0	C20/54*	54	85	54.0 - 61.0
C20/19	19	55	19.0 - 23.0				
C20/23	23	55	23.0 - 27.0				

*INDICATES NON-STANDARD DIE SIZE

DIMENSIONS (L X W X H)

MACHINE ASSEMBLED	34" X 24" X 49"
PACKAGE	31" X 33" X 26"
WEIGHT NET	300 LBS
WEIGHT GROSS	500 LBS

DIE DIAGRAM



QUALITY YOU
CAN TRUST



ENGINEERED FOR
PROFESSIONALS



PERFORMANCE
THAT LASTS

CC20c

AUTOMATIC 1-1/4" HOSE CRIMPER - CNC

BUILT FOR PERFORMANCE.
CRIMP WITH CONFIDENCE.



INCLUDES:



DIE RACK



DIE QUICK
CHANGE TOOL



FOOT PEDAL



SIMPLE SET UP

Get started fast with easy installation.



RELIABLE RESULTS

Consistent crimps you can count on.



BUILT TO LAST

Durable construction for demanding environments.



1-1/4" CAPACITY

Crimps up to 1-1/4" 4-wire spiral hose.



170 TONS FORCE

Powerful crimping when it matters.



CNC COMPUTER CONTROLLER

Save and store multiple crimping combinations for fast, accurate results.

TECHNICAL DATA

CRIMPING RANGE	6 MM – 61 MM
CRIMPING FORCE	170 TON (1700KN)
CLOSING SPEED	8 SECONDS
MAX HOSE SIZE	1-1/4" 4 WIRE SPIRAL
TYPE OF DIES	C20
MAXIMUM OPENING	109 MM
MASTER DIE	84 MM
POWER	220VAC 1 PHASE
OIL CAPACITY	8.4 US GAL
WEIGHT	300 LBS N.W., 500 LBS G.W.
INTERFACE	CNC COMPUTER CONTROLLER (STORE & SAVE CRIMPING COMBINATIONS)

DIE SIZES

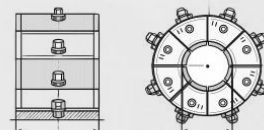
PART NUMBER	DIAMETER (MM)	LENGTH (MM)	CRIMPING RANGE (MM)	PART NUMBER	DIAMETER (MM)	LENGTH (MM)	CRIMPING RANGE (MM)
C20/6*	6	55	6.0 - 8.0	C20/27	27	70	27.0 - 31.0
C20/8*	8	55	8.0 - 10.0	C20/31	31	70	31.0 - 36.0
C20/10*	10	55	10.0 - 12.0	C20/36	36	75	36.0 - 41.0
C20/12*	12	55	12.0 - 14.0	C20/41	41	75	41.0 - 47.0
C20/14	14	55	14.0 - 16.0	C20/47	47	85	47.0 - 54.0
C20/16	16	55	16.0 - 19.0	C20/54*	54	85	54.0 - 61.0
C20/19	19	55	19.0 - 23.0				
C20/23	23	55	23.0 - 27.0				

*INDICATES NON-STANDARD DIE SIZE

DIMENSIONS (L X W X H)

MACHINE ASSEMBLED	34" X 24" X 49"
PACKAGE	31" X 33" X 26"
WEIGHT NET	300 LBS
WEIGHT GROSS	500 LBS

DIE DIAGRAM



QUALITY YOU
CAN TRUST



ENGINEERED FOR
PROFESSIONALS



PERFORMANCE
THAT LASTS

CC32C

AUTOMATIC 2" HOSE CRIMPER - CNC

**BUILT FOR PERFORMANCE.
CRIMP WITH CONFIDENCE.**

INCLUDES:



DIE RACK



DIE QUICK CHANGE TOOL



FOOT PEDAL



SIMPLE SET UP

Get started fast with easy installation.



RELIABLE RESULTS

Consistent crimps you can count on.



BUILT TO LAST

Durable construction for demanding environments.



2" CAPACITY

Crimps up to 2" 4-wire spiral hose.



225 TONS FORCE

Powerful crimping when it matters.



CNC COMPUTER CONTROLLER

Save and store multiple crimping combinations for fast, accurate results.

TECHNICAL DATA

CRIMPING RANGE	6 MM - 87 MM
CRIMPING FORCE	225 TON (2250KN)
CLOSING SPEED	12 SECONDS
MAX HOSE SIZE	2" 4 WIRE SPIRAL
TYPE OF DIES	C32
MAXIMUM OPENING	132 MM
MASTER DIE	99 MM
POWER	220VAC 1 PHASE
OIL CAPACITY	8.5 US GAL
WEIGHT	400 LBS N.W., 650 LBS G.W.
INTERFACE	CNC COMPUTER CONTROLLER (STORE & SAVE CRIMPING COMBINATIONS)

DIE SIZES

PART NUMBER	DIAMETER (MM)	LENGTH (MM)	CRIMPING RANGE (MM)
C32/6*	6	55	6.0 - 8.0
C32/8*	8	55	8.0 - 10.0
C32/10*	10	55	10.0 - 12.0
C32/12*	12	55	12.0 - 14.0
C32/14	14	55	14.0 - 16.0
C32/16	16	55	16.0 - 18.0
C32/19	19	55	19.0 - 23.0
C32/22	22	70	22.0 - 26.0

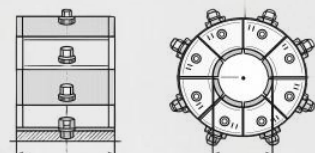
PART NUMBER	DIAMETER (MM)	LENGTH (MM)	CRIMPING RANGE (MM)
C32/26	26	70	26.0 - 30.0
C32/30	30	70	30.0 - 34.0
C32/34	34	75	34.0 - 39.0
C32/39	39	75	39.0 - 45.0
C32/45	45	90	45.0 - 51.0
C32/51	51	90	51.0 - 57.0
C32/57	57	90	57.0 - 63.0
C32/63	63	100	63.0 - 69.0
C32/69	69	110	69.0 - 74.0
C32/74*	74	110	74.0 - 78.0
C32/78	78	110	78.0 - 87.0

*INDICATES NON-STANDARD DIE SIZE

DIMENSIONS (L X W X H)

MACHINE ASSEMBLED	28" X 24" X 52"
PACKAGE	31" X 34" X 33"
WEIGHT NET	400 LBS
WEIGHT GROSS	650 LBS

DIE DIAGRAM



QUALITY YOU CAN TRUST



ENGINEERED FOR PROFESSIONALS



PERFORMANCE THAT LASTS

CC64C-SC

AUTOMATIC 4" HOSE CRIMPER - CNC

BUILT FOR PERFORMANCE.
CRIMP WITH CONFIDENCE.

INCLUDES:



INTEGRATED
DIE RACK



FOOT PEDAL



CNC CONTROLLER
(STORE & SAVE
CRIMPING COMBINATIONS)



COMPUTER CONTROLLED

Save and store multiple crimping combinations for fast, accurate results.



SELF CONTAINED HYDRAULIC POWER UNIT

Integrated hydraulic system for maximum portability.



INTEGRATED DIE STAND

Built-in die storage for C32 and C140 sizes.



2" HYDRAULIC HOSE 4" INDUSTRIAL HOSE

Crimps up to 2" 6-wire hydraulic hose or 4" industrial hose.



BUILT TO LAST

Heavy-duty construction for demanding environments.



TECHNICAL DATA

CRIMPING RANGE	6 MM - 140 MM
CRIMPING FORCE	320 TON (3200KN)
CLOSING SPEED	10 SECONDS
MAX HOSE SIZE	2" 6 WIRE SPIRAL 4" INDUSTRIAL
TYPE OF DIES	C32 / C140
MAXIMUM OPENING	222 MM
MASTER DIE	99 / 140 MM
POWER	220VAC 3 PHASE
OIL CAPACITY	40 US GAL
WEIGHT	2,900 LBS N.W., 3,200 LBS G.W.
INTERFACE	COMPUTER CONTROLLER

DIE SIZES

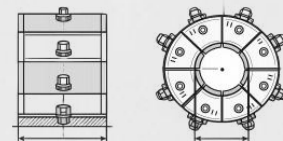
C32 SERIES DIES				C140 SERIES DIES			
PART NUMBER	DIAMETER (MM)	LENGTH (MM)	CRIMPING RANGE (MM)	PART NUMBER	DIAMETER (MM)	LENGTH (MM)	CRIMPING RANGE (MM)
C32/6*	6	55	6.0 - 8.0	C140/84*	84	110	84.0 - 92.0
C32/8*	8	55	8.0 - 10.0	C140/92*	92	110	92.0 - 100.0
C32/10*	10	55	10.0 - 12.0	C140/108*	100	110	100.0 - 116.0
C32/12*	12	55	12.0 - 14.0	C140/126*	126	110	124.0 - 132.0
C32/14	14	55	14.0 - 16.0	C140/132*	132	110	132.0 - 140.0
C32/16	16	55	16.0 - 19.0				
C32/19	19	55	19.0 - 23.0				
C32/22	22	70	22.0 - 26.0				
C32/26	26	70	26.0 - 30.0				
C32/34	30	75	30.0 - 34.0				
C32/34	34	75	34.0 - 39.0				
C32/45	33	90	45.0 - 45.0				
C32/51	51	90	51.0 - 57.0				
C32/57	57	90	57.0 - 63.0				
C32/63	63	100	63.0 - 69.0				
C32/69	69	110	69.0 - 74.0				
C32/74	74	110	74.0 - 78.0				
C32/78	78	110	78.0 - 87.0				

*INDICATES NON-STANDARD DIE SIZE
ALL 140 SIZED DIES ARE SOLD SEPERATLY

DIMENSIONS (L X W X H)

MACHINE ASSEMBLED	32" X 33" X 64"
PACKAGE	40" X 40" X 74"
WEIGHT NET	2,300 LBS
WEIGHT GROSS	2,760 LBS

DIE DIAGRAM



QUALITY YOU
CAN TRUST



ENGINEERED FOR
PROFESSIONALS



PERFORMANCE
THAT LASTS

CC64C

AUTOMATIC 4" HOSE CRIMPER - CNC

BUILT FOR PERFORMANCE.
CRIMP WITH CONFIDENCE.

INCLUDES:



INTEGRATED DIE RACK



FOOT PEDAL



CNC CONTROLLER
(STORE & SAVE CRIMPING COMBINATIONS)



COMPUTER CONTROLLED

Save and store multiple crimping combinations for fast, accurate results.



STAND ALONE HYDRAULIC POWER UNIT

Separate power unit for easier operation and maintenance.



INTEGRATED DIE STAND

Built-in die storage for C32 and C140 sizes.



2" HYDRAULIC HOSE 4" INDUSTRIAL HOSE

Crimps up to 2" 6-wire hydraulic hose or 4" industrial hose.



BUILT TO LAST

Heavy-duty construction for demanding environments.

NARROW BODY DESIGN



Sleek and compact design for easier access, better visibility and maximizing workspace.

TECHNICAL DATA

CRIMPING RANGE	6 MM - 140 MM
CRIMPING FORCE	320 TON (3200KN)
CLOSING SPEED	10 SECONDS
MAX HOSE SIZE	2" 6 WIRE SPIRAL 4" INDUSTRIAL
TYPE OF DIES	C32 / C140
MAXIMUM OPENING	222 MM
MASTER DIE	99 / 140 MM
POWER	220VAC 3 PHASE
OIL CAPACITY	40 US GAL
WEIGHT	2,900 LBS N.W., 3,200 LBS G.W.
INTERFACE	COMPUTER CONTROLLER

DIE SIZES

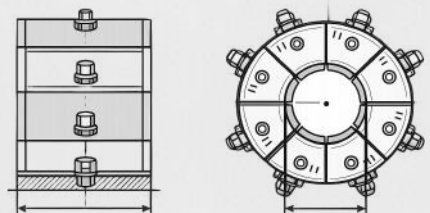
C32 SERIES DIES				C140 SERIES DIES			
PART NUMBER	DIAMETER (MM)	LENGTH (MM)	CRIMPING RANGE (MM)	PART NUMBER	DIAMETER (MM)	LENGTH (MM)	CRIMPING RANGE (MM)
C32/6	6	55	6.0 - 8.0	C140/84	84	110	84.0 - 92.0
C32/8	8	55	8.0 - 10.0	C140/92	92	110	92.0 - 100.0
C32/10	10	55	10.0 - 12.0	C140/100	100	110	100.0 - 110.0
C32/12	12	55	12.0 - 14.0	C140/108	108	110	110.0 - 116.0
C32/14	14	55	14.0 - 16.0	C140/124*	116	110	124.0 - 132.0
C32/16	16	55	16.0 - 19.0	C140/132*	132	110	132.0 - 140.0
C32/19	19	55	19.0 - 23.0				
C32/22	22	70	22.0 - 26.0				
C32/26	26	70	26.0 - 30.0				
C32/24	34	75	34.0 - 34.0				
C32/39	39	75	39.0 - 45.0				
C32/45	45	90	45.0 - 57.0				
C32/57	57	90	57.0 - 63.0				
C32/63	63	100	63.0 - 69.0				
C32/69	69	110	69.0 - 74.0				
C32/74	74	110	74.0 - 78.0				
C32/78	78	110	78.0 - 87.0				

*INDICATES NON-STANDARD DIE SIZE

DIMENSIONS (L X W X H)

MACHINE ASSEMBLED	42" X 30" X 64"
PACKAGE	40" X 40" X 74"
WEIGHT NET	2,900 LBS
WEIGHT GROSS	3,200 LBS

DIE DIAGRAM



QUALITY YOU CAN TRUST



ENGINEERED FOR PROFESSIONALS



PERFORMANCE THAT LASTS

CC96C

AUTOMATIC 6" HOSE CRIMPER - CNC

BUILT FOR PERFORMANCE.
CRIMP WITH CONFIDENCE.



INCLUDES:



INTEGRATED DIE RACK



FOOT PEDAL



CNC CONTROLLER
(STORE & SAVE CRIMPING COMBINATIONS)



COMPUTER CONTROLLED

Save and store multiple crimping combinations for fast, accurate results.



STAND ALONE HYDRAULIC POWER UNIT

Separate power unit for easier operation and maintenance.



INTEGRATED DIE STORAGE

Built-in die storage for C32 and C160 sizes.



2" HYDRAULIC HOSE 6" INDUSTRIAL HOSE

Crimps up to 2" 6-wire hydraulic hose or 6" industrial hose.



BUILT TO LAST

Heavy-duty construction for demanding environments.

TECHNICAL DATA

CRIMPING RANGE	6 MM - 252 MM
CRIMPING FORCE	320 TON (3200KN)
CLOSING SPEED	10 SECONDS
MAX HOSE SIZE	2" 6 WIRE SPIRAL 6" INDUSTRIAL
TYPE OF DIES	C32 / C160
MAXIMUM OPENING	345 MM
MASTER DIE	99 / 220 MM
POWER	220VAC 3 PHASE
OIL CAPACITY	40 US GAL
WEIGHT	2,900 LBS N.W., 3,200 LBS G.W.
INTERFACE	COMPUTER CONTROLLER

DIE SIZES

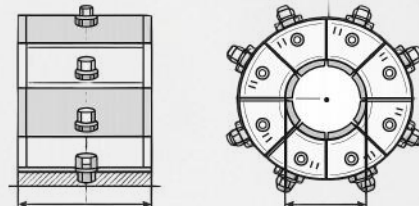
C32 SERIES DIES				C160 SERIES DIES			
PART NUMBER	DIAMETER (MM)	LENGTH (MM)	CRIMPING RANGE (MM)	PART NUMBER	DIAMETER (MM)	LENGTH (MM)	CRIMPING RANGE (MM)
C32/6	6	55	6.0 - 8.0	C160/84	84	110	84.0 - 92.0
C32/8	8	55	8.0 - 10.0	C160/92	92	110	92.0 - 100.0
C32/10	10	55	10.0 - 12.0	C160/100	100	120	100.0 - 110.0
C32/12	12	55	12.0 - 14.0	C160/108	108	120	110.0 - 116.0
C32/14	14	55	14.0 - 16.0	C160/116	116	120	116.0 - 124.0
C32/16	16	55	16.0 - 19.0	C160/126	126	120	126.0 - 136.0
C32/19	19	55	19.0 - 23.0	C160/136	136	120	136.0 - 140.0
C32/22	22	70	22.0 - 26.0	C160/146	146	120	146.0 - 156.0
C32/26	26	70	26.0 - 30.0	C160/156*	156	120	156.0 - 166.0
C32/30	30	70	26.0 - 34.0	C160/166*	166	120	166.0 - 178.0
C32/34	34	75	34.0 - 34.0	C160/178*	178	120	178.0 - 190.0
C32/39	39	75	39.0 - 45.0	C160/190*	190	120	190.0 - 202.0
C32/45	45	90	45.0 - 51.0	C160/202*	202	120	202.0 - 216.0
C32/51	51	90	51.0 - 57.0	C160/216*	216	120	216.0 - 226.0
C32/57	57	90	57.0 - 63.0	C160/226*	226	120	226.0 - 236.0
C32/63	63	100	63.0 - 69.0	C160/236*	236	120	236.0 - 252.0
C32/69	69	110	69.0 - 74.0				
C32/74	74	110	74.0 - 78.0				
C32/78	78	110	78.0 - 87.0				

*INDICATES NON-STANDARD DIE SIZE

DIMENSIONS (L X W X H)

MACHINE ASSEMBLED	60" X 30" X 64"
PACKAGE	58" X 44" X 74"
WEIGHT NET	2,900 LBS
WEIGHT GROSS	3,200 LBS

DIE DIAGRAM



QUALITY YOU CAN TRUST



ENGINEERED FOR PROFESSIONALS



PERFORMANCE THAT LASTS

OPTIONAL DIES

EXPAND YOUR CAPABILITIES

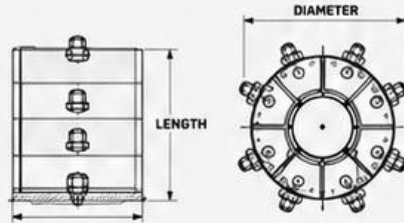


**STANDARD DIES
OPTIONAL SIZES**

— ADDITIONAL SIZES AVAILABLE
FOR STANDARD CRIMPING —

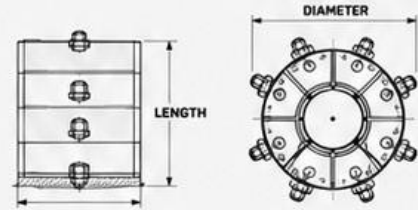
C20 OPTIONAL DIE SIZES

PART NUMBER	DIAMETER (MM)	LENGTH (MM)	CRIMPING RANGE (MM)
C20/6	6	55	6.0 - 8.0
C20/8	8	55	8.0 - 10.0
C20/10	10	55	10.0 - 12.0
C20/12	12	55	12.0 - 14.0
C20/54	54	85	54.0 - 61.0



C32 OPTIONAL DIE SIZES

PART NUMBER	DIAMETER (MM)	LENGTH (MM)	CRIMPING RANGE (MM)
C32/6	6	55	6.0 - 8.0
C32/8	8	55	8.0 - 10.0
C32/10	10	55	10.0 - 12.0
C32/12	12	55	12.0 - 14.0
C32/74	74	110	74.0 - 78.0
C32/78	78	110	78.0 - 87.0

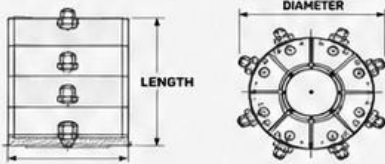


C140 OPTIONAL DIE SIZES

PART NUMBER	DIAMETER (MM)	LENGTH (MM)	CRIMPING RANGE (MM)
C140/124	124	110	124.0 - 132.0
C140/132	132	110	132.0 - 140.0

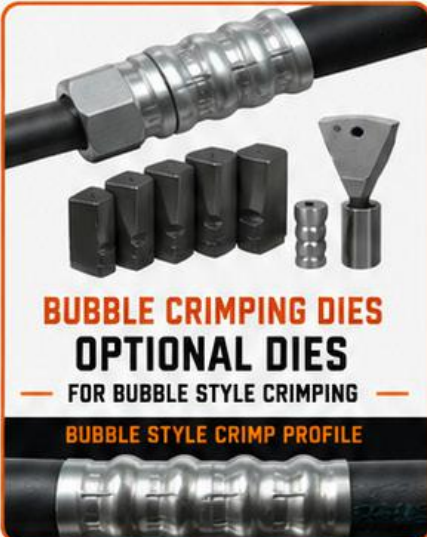
C160 OPTIONAL DIE SIZES

PART NUMBER	DIAMETER (MM)	LENGTH (MM)	CRIMPING RANGE (MM)
C160/156	156	120	156.0 - 166.0
C160/166	166	120	166.0 - 178.0
C160/178	178	120	178.0 - 190.0
C160/190	190	120	190.0 - 202.0



LARGE DIAMETER DIES

— OPTIONAL DIES FOR
LARGER HOSE & FITTINGS —



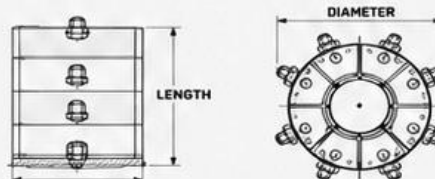
**BUBBLE CRIMPING DIES
OPTIONAL DIES**

— FOR BUBBLE STYLE CRIMPING —

BUBBLE STYLE CRIMP PROFILE

C32 BUBBLE STYLE DIE SIZES

PART NUMBER	DIAMETER (MM)	LENGTH (MM)	CRIMPING RANGE (MM)
C32/11B	11	55	11.0 - 14.0
C32/14B	14	55	14.0 - 16.0
C32/16B	16	55	16.0 - 18.0
C32/18B	18	55	18.0 - 21.0
C32/21B	21	55	21.0 - 25.0
C32/25B	25	55	25.0 - 28.0
C32/28B	28	55	28.0 - 31.0



DIE SIZE SELECTION BASED ON HOSE O.D. AND FITTING TYPE.
CONSULT YOUR QUALITY HYDRAULICS REPRESENTATIVE FOR RECOMMENDATIONS.

HYDRAULIC HOSE CUTTING SAWS

PRECISE. POWERFUL. BUILT TO LAST.

HS20-DC

PORTABLE SERVICE SAW



12V DC POWER
Connects directly to vehicle battery.



PORTABLE DESIGN
Lightweight & easy to transport.



CLEAN, PRECISE CUTS
Sharp, consistent cuts every time.



TECHNICAL DATA

MAX HOSE SIZE	1" 4 WIRE SPIRAL 1-1/4" 2 WIRE BRAID
SIZE OF BLADE	208MM X 25MM
DIMENSION (L x W x H)	16" X 12" X 18"
POWER	12V DC
WEIGHT	90 LBS N.W.

HS20-120V

COMPACT BENCH SAW



120V AC POWER
Standard shop power connection.



FAST & EFFICIENT
Smooth, controlled cutting action.



COMPACT BENCH DESIGN
Stable & easy to operate.



TECHNICAL DATA

MAX HOSE SIZE	1" 4 WIRE SPIRAL 1-1/4" 2 WIRE BRAID
SIZE OF BLADE	250MM X 25MM
DIMENSION (L x W x H)	22" X 15" X 18"
POWER	120V AC
WEIGHT	100 LBS N.W.

HS32-220V

INDUSTRIAL PRODUCTION SAW



HEAVY-DUTY CONSTRUCTION
Built for high-volume production.



LARGE CAPACITY
Handles up to 2" 4-wire spiral & 1-1/2" 2-wire braid.



PRECISE & REPEATABLE
Clean, square cuts for professional results.



220V AC POWER
Industrial-grade motor for continuous use.



TECHNICAL DATA

MAX HOSE SIZE	2" 4 WIRE SPIRAL 1-1/2" 2 WIRE BRAID
SIZE OF BLADE	350MM X 25MM
DIMENSION (L x W x H)	32" X 22" X 45"
POWER	220V AC
WEIGHT	275 LBS N.W.

APPLICATIONS



Hydraulic Hose Assemblies



Field Service & Repair



Workshop & Fabrication



Industrial Production



QUALITY YOU CAN TRUST



ENGINEERED FOR PROFESSIONALS



PERFORMANCE THAT LASTS



PRECISION. POWER. RELIABILITY. CRIMP WITH CONFIDENCE.

At Quality Hydraulics, we build hose crimpers that professionals rely on every day. Engineered for accuracy. Built for durability. Backed by service you can trust.



BUILT TO LAST

Heavy-duty construction for demanding environments.



PRECISION ENGINEERED

Accurate crimps every time.



MAXIMUM PRODUCTIVITY

Fast cycle times and easy operation.



QUALITY YOU CAN TRUST

Engineered for professionals.

BUILT STRONG. MADE TO PERFORM.



📍 2460 COMMERCIAL BLVD
STATE COLLEGE, PA 16801

☎ 814-954-5752

🌐 QHSHOESHOP.COM

LEARN MORE

Scan to visit our website.

