



JST

FFC / FPC Connectors

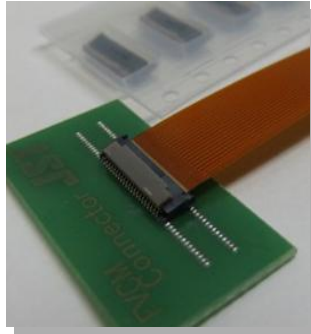
FVCM connector

0.2mm pitch

[Type]
Zero insertion force type, SMT
type

[Current rating]
0.2A

[Voltage rating]
50V



This FVCM connector is the first mid-flip type 0.2 mm pitch connector for FPC in the connector industry. It is designed for the use of multipolarization, operability and both upper and lower contacts. Moreover, it inherits from tilt type, and it improves the freedom of design for placing at the PC board dramatically.

FVR connector

0.2mm pitch

[Type]
Zero insertion force type, SMT
type
Back flip mechanism

[Current rating]
0.2A

[Voltage rating]
50V



This is low profile and space saving type connector for FPC with 0.2 mm pitch, 0.95 mm height, and 3.0 mm depth. Back flip type of double-sided contact improves the freedom for routing of FPC.

FVX connector

0.2mm pitch

[Type]
Low-profile type, With slide
lock mechanism
Zero insertion force type, SMT
type

[Current rating]
0.2A

[Voltage rating]
50V



This connector has been developed for small portable equipment for which low profile and miniaturization are required. By using FPC with protrusions, the positioning accuracy of FPC is improved.

FVXS connector

0.2mm pitch

[Type]
Zero insertion force type, SMT
type

[Current rating]
0.2A

[Voltage rating]
50V



This connector has been developed for small portable equipment for which low profile and miniaturization are required. This connector also has the structure that tension due to handling of FPC is absorbed by socket and reinforcing tab.

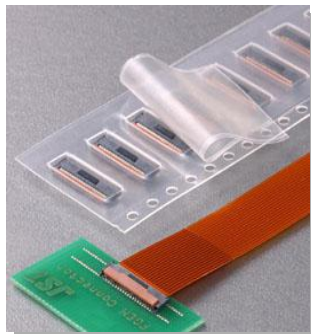
FGEM connector

0.25mm pitch

[Type]
Zero insertion force type, SMT
type

[Current rating]
0.2A

[Voltage rating]
50V



This FGEM connector is the first mid-flip type 0.25mm pitch connector for FPC in the connector industry. By adding the tilt type, PC insertion workability improved and located parts to near the connector, and high-density mounting was enabled.

FXR connector

0.3mm pitch

[Type]
Zero insertion force type, SMT
type

[Current rating]
0.2A

[Voltage rating]
50V



This FXR connector is ZIF type connector for FPC with only 1.0mm height.

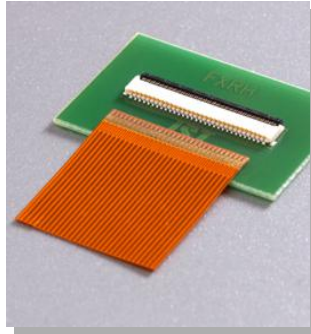
FXRH connector

0.3mm pitch

[Type]
Zero insertion force type, SMT type

[Current rating]
0.2A

[Voltage rating]
50V



This FXRH connector is ZIF type connector for FPC with only 0.9mm height.

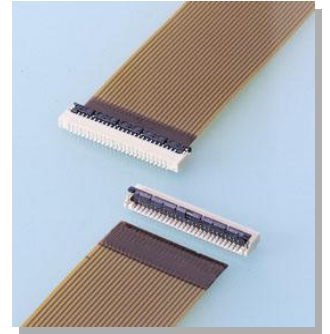
FXS connector

0.3mm pitch

[Type]
Zero insertion force type, SMT type

[Current rating]
0.2A

[Voltage rating]
50V



Space saving flip lock type connector, with 1.8mm height and 3.85mm depth.

FXV connector

0.3mm pitch

[Type]
Double Zero insertion force type, SMT type
Low-profile type, With slide lock mechanism

[Current rating]
0.2A

[Voltage rating]
50V



The FXV connector is a market requires space saving and low profile 0.3mm pitch connector, and designed for corresponding to FPC with protrusions.

FXVL Connector

0.3mm pitch

[Type]
Double Zero insertion force type, SMT type

[Current rating]
0.2A

[Voltage rating]
50V



This FXVL connector is a space saving and low profile connector for FPC demanded from the market, and realizes 0.3mm pitch connector with a mounting height of 0.9mm and depth of 2.68mm. In 0.3mm pitch FPC connector, the smallest product in mounting area on the board has been provided.

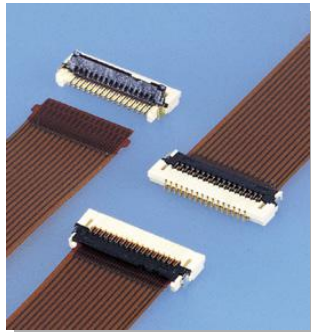
FXY connector

0.3mm pitch

[Type]
Low-profile type, With slide lock mechanism
Zero insertion force type, SMT type

[Current rating]
0.2A

[Voltage rating]
50V



In addition to achieving space saving and low-profile features demanded by the market, this connector also realizes superb operability by adopting a FPC with protrusion. The use of the FPC provides secure and foolproof mating at the customers' production site.

FXZ connector

0.3mm pitch

[Type]
Double Zero insertion force type, SMT type

[Current rating]
0.2A

[Voltage rating]
50V



This connector realizes space saving and low profile features demanded by the market, and it provides excellent operability. Various number of circuits can be available.

FXZT connector

0.3mm pitch

[Type]
Zero insertion force type, SMT type

[Current rating]
0.2A

[Voltage rating]
50V



Vertical 0.3mm pitch ZIF type connector. This connector was mainly developed to connect FPC and subminiature digital products such as DVC, DSC, PDAs and so on.

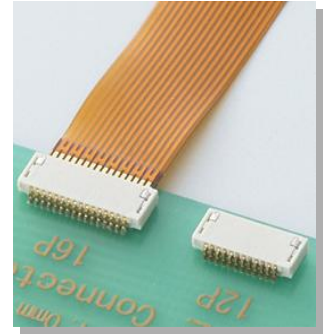
FZ connector

0.4mm pitch

[Type]
Snap-in type, SMT type

[Current rating]
0.5A

[Voltage rating]
50V



This is very small Non-ZIF type 0.4mm pitch connector. Double-sided contact structure.

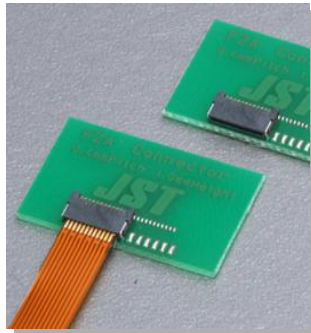
FZA Connector

0.4mm pitch

[Type]
Snap-in type, SMT type

[Current rating]
0.5A

[Voltage rating]
50V



This is a 0.4 mm pitch, compact Non-ZIF type connector with a mounting height of 1.0 mm and a depth of 3.0 mm.

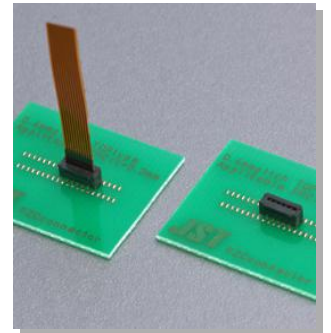
FZC Connector

0.4mm pitch

[Type]
Snap-in type, SMT type

[Current rating]
0.5A

[Voltage rating]
50V



This is low profile 0.4mm pitch Non-ZIF top entry type connector with a mounting height of 2.5mm.

FCH Connector

0.5mm pitch

[Type]
Snap-in type, SMT type

[Current rating]
0.3A

[Voltage rating]
50V



This is 0.5mm pitch connector for FPC which has the exclusive GND contact and enables high-speed transmission with connecting to the impedance controlled FPC. Adopting the auto lock mechanism that makes lock by performing the one action of snap-in-work, the workability improvement is realized.

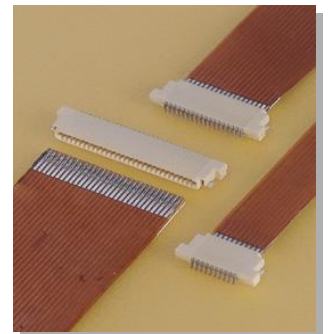
FH connector

0.5mm pitch

[Type]
Snap-in type, SMT type

[Current rating]
0.5A

[Voltage rating]
50V



The large miniaturization at pitch direction and depth direction and low-profile as 1.2mm mounting height are realized. FH connector is miniaturized and space saving Non-ZIF type connector for FPC.*Double-sided contact

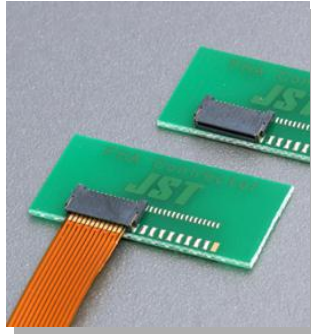
FHA Connector

0.5mm pitch

[Type]
Snap-in type, SMT type

[Current rating]
0.5A

[Voltage rating]
50V



This FHA connector is a renewal product of current FHJ connector. This is Non-ZIF type connector for the 0.3mm thickness FPC with a mounting height of 1.1mm, small and space saving type.

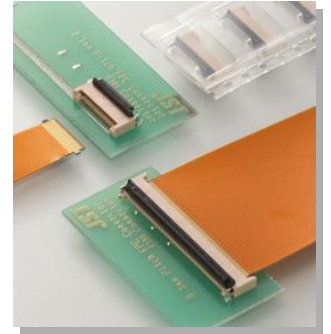
FHH connector

0.5mm pitch

[Type]
Zero insertion force type, SMT type

[Current rating]
0.5A

[Voltage rating]
50V



This is connector with the double-sided contact for FPC. As FPC with protrusions is used for this FHH connector, prevention of incomplete insertion and mis-insertion are realized and connection reliability is improved.

FHHS connector

0.5mm pitch

[Type]
High-speed transmission
Back flip mechanism

[Current rating]
0.5A

[Voltage rating]
50V



This is 0.5 mm pitch, back flip type FPC connector for 0.3 mm thick FPC. Realized space saving with thin of 1.0 mm mounting height. Considering the transmission of various high-speed interfaces such as Thunderbolt™, the differential impedance shall be matched at 90Ω.

FHJ connector

0.5mm pitch

[Type]
Snap-in type, SMT type

[Current rating]
0.5A

[Voltage rating]
50V



Non-ZIF type low-profile of 1.2mm mounting height. 0.3mm thick standard type FPC is applicable.

FHN connector

0.5mm pitch

[Type]
Auto-locking mechanism
Back flip mechanism

[Current rating]
0.5A (20-circuit or less)
0.3A (21-circuit or more)

[Voltage rating]
50V



Adopting the auto-locking mechanism which locks by one action when having FFC/FPC inserted into connector, insertion workability and reliability are much improved.

FHS connector

0.5mm pitch

[Type]
Zero insertion force type, SMT type

[Current rating]
0.5A

[Voltage rating]
50V



FHS connector is a space-saving type connector for FPC with 3.1mm depth, though it is low profile of 0.9mm mounting height. 0.2mm thick standard FPC.

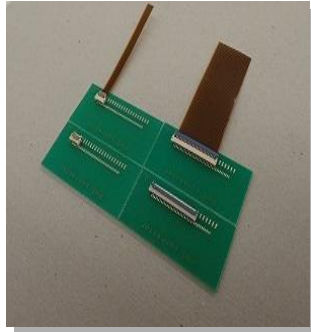
FHSY connector

0.5mm pitch

[Type]
Zero insertion force type, SMT type

[Current rating]
0.5A

[Voltage rating]
50V



This ZIF type 'flip lock' FPC connector achieves a low-profile feature of a 0.9mm mounting height despite the thickness of the FPC being 0.3mm.

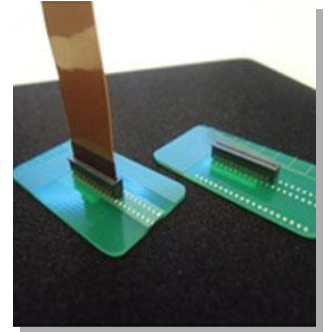
FHT connector

0.5mm pitch

[Type]
Snap-in type, SMT type

[Current rating]
0.5A

[Voltage rating]
50V



Adopting Non-ZIF type (engagement can be done by single action.) Achieving Low profile and Space saving Dealing with Halogen-free

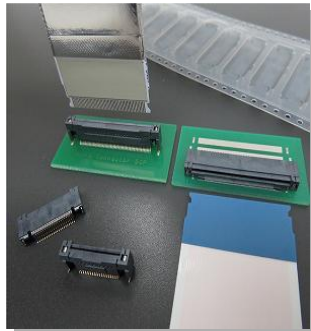
FHTG connector

0.5mm pitch

[Type]
Snap-in type, SMT type
Auto-locking mechanism

[Current rating]
0.5A

[Voltage rating]
50V



By providing a unique lock mechanism for confirming the mating, it is possible to insert the FFC with one action and pull out the FFC without unlocking, realizing good workability.

FHY connector

0.5mm pitch

[Type]
Zero insertion force type, SMT type
Zero insertion force type, With slide lock mechanism, For long distance between two PC board

[Current rating]
0.5A

[Voltage rating]
50V



This connector for the 0.3mm thickness FPC with a mounting height of 1.3mm. FPC with protrusion prevents incomplete insertion and mis-insertion, so that it provides reliable connection.

FKZ connector

0.5mm pitch

[Type]
Zero insertion force type, SMT type

[Current rating]
0.5A

[Voltage rating]
50V



This is a space saving type connector for FPC. ZIF type is adopted due to improving the wear resistance and the mating life of the connector.

FLH connector

0.5mm pitch

[Type]
Zero insertion force type, SMT type

[Current rating]
0.5A

[Voltage rating]
50V



This is a 0.5 mm pitch FPC connector with a mounting height of 1.2 mm, compatible with standard FPCs with a terminal (lead) thickness of 0.3 mm. This connector features a Zero Insertion Force (ZIF) connection to effectively extend the lifespan of FPCs by reducing wear during mating and unmating.

FLT connector

0.5mm pitch

[Type]
Snap-in type, SMT type

[Current rating]
0.5A

[Voltage rating]
50V



*Top entry type*The housing is made of heat resistant plastic to allow reflow soldering.*Staggered surface mount tails*Low insertion force with staggered mating points design

FLZ connector

0.5mm pitch

[Type]
Zero insertion force type, SMT type

[Current rating]
0.5A

[Voltage rating]
50V



This is a 0.5 mm pitch, compact FFC/FPC connector with a mounting height of 2 mm. It features Zero Insertion Force (ZIF) connection, which is effective in improving wear resistance and insertion/withdrawal life. Both normal (upper contact type) and reverse (bottom contact type) connection types are available, contributing to greater flexibility in the design process.

FLZT connector

0.5mm pitch

[Type]
Zero insertion force type, SMT type

[Current rating]
0.5A

[Voltage rating]
50V



Top entry type 0.5mm pitch FPC connector. Solder tails are of a staggered design.*Both normal and reverse types are available so that the designer can choose the FPC direction at his option.

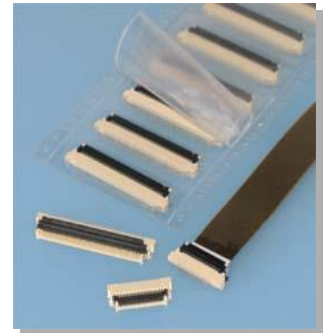
FLZX connector

0.5mm pitch

[Type]
Zero insertion force type, SMT type

[Current rating]
0.5A

[Voltage rating]
50V



Applicable to standard 0.3mm thickness FFC or FPC.*Partical operation, even with big number of circuits, is achieved thanks to 'flip lock' type.

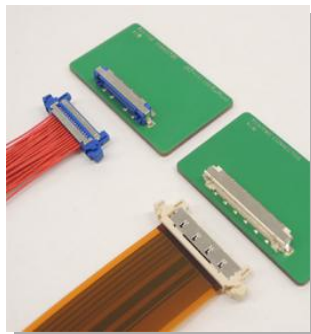
FWG connector (Connectors for FPC and FFC)

0.5mm pitch

[Type]
Space saving

[Current rating]
0.3A

[Voltage rating]
50V



This is crimp style disconnectable connector with 0.5 mm pitch lock for high-speed transmission which can be chosen discrete wires, FPC or FFC depending on usage. By assuming the use of multiple pieces of connector in the vicinity, prevention of mis-mating is provided by 4 kinds of key pattern in each circuit and 4 different colors of housing.

FY connector

0.5mm pitch

[Type]
Snap-in type, SMT type

[Current rating]
0.3A

[Voltage rating]
30V



0.5mm pitch non-ZIF snap-in type FFC connector.

FAZ connector

1mm pitch

[Type]
Zero insertion force type, SMT type

[Current rating]
1.0A

[Voltage rating]
50V



The FAZ connector is SMT type for PC board connector, which is a Zero Insertion Force (ZIF) type for FFC connection with a lead pitch 1.0 mm.

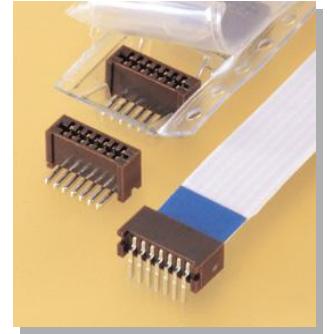
FM connector

1mm pitch

[Type]
Snap-in type, SMT type/DIP type

[Current rating]
0.5A

[Voltage rating]
50V



*Double-sided contact*Easy mating with the FFC/FPC, by snap-in design.*Both Dip (through-hole) and SMT types are available.SMT type connectors have heat-resistant housings so that solder reflow is possible.

FMN connector

1mm pitch

[Type]
Snap-in type, SMT type/DIP type

[Current rating]
0.5A

[Voltage rating]
50V



This connector is 1.0 mm pitch for FFC connection. Realized low cost multi-core by adopting contact structure on one side. In addition, it is a multi-entry type connector that has both DIP and SMT types.

FMS connector

1mm pitch

[Type]
Snap-in type, SMT type

[Current rating]
0.5A

[Voltage rating]
50V



*Compact 2.8mm in mounting height and 6.3mm in depth*Double-sided contact*Easy mating with the FFC/FPC, by snap-in design.

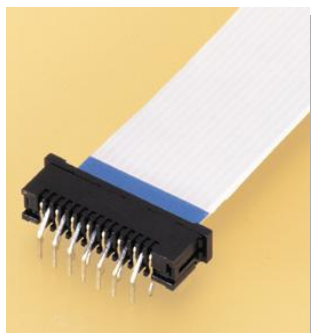
FMZ connector

1mm pitch

[Type]
Zero insertion force type, DIP type

[Current rating]
0.5A

[Voltage rating]
50V



*Double-leaf contact*Temporary retention featureAfter the FFC is inserted, but before the locking slide is actuated, a retention feature prevents the FFC leads from moving or coming out.

FPZ connector

1mm pitch

[Type]
Zero insertion force type, SMT type

[Current rating]
0.5A

[Voltage rating]
50V



*Connection can be made simply by inserting the leads into the connector and pressing the slider. Once the leads are inserted, they are held by the 4-side guides located inside the slider so that they will not dislocate or come off.

FUN connector

1mm pitch

[Type]
For FFC, Board-in connector



This board-in type connector provides direct soldering connection between the conductors of the 1.0mm pitch FFC and the PC board. *Small pitch as 1.0mm pitch for FFC board-in type* Lower assembly costs

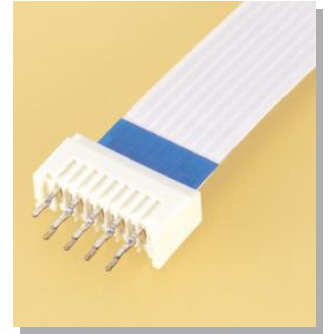
FE connector

1.25mm pitch

[Type]
Snap-in type, DIP type

[Current rating]
1.0A

[Voltage rating]
200V



*Low insertion force and high contact pressure*The FFC is securely connected by simply inserting their leads into the connector. *The contact's solder dip section has a retention mechanism that allows the connector to be temporarily mounted on the PC board and prevents the connector from floating when soldered.

FFS connector

1.25mm pitch

[Type]
Snap-in type, SMT type

[Current rating]
0.5A

[Voltage rating]
50V



*Double-sided contact*The FFC is securely connected by simply inserting their leads into the connector.

FDZ connector

2.54mm pitch

[Type]
Zero insertion force type, DIP type

[Current rating]
Tin-plated copper foil lead/1.0A, Silver paste carbon-printed lead/50mA

[Voltage rating]
250V



*Double-sided contact*The contact solder tail has a board retention feature that allows the connector to be temporarily held on the PC board while it is being soldered.