

product catalogue

 **armorgard**
ticking every box.

Version
06





welcome

...to the latest edition of the Armorgard product catalogue. Here, you'll discover our comprehensive range of industry-leading solutions designed for on-site security, safety, and productivity. In addition to our brand new and continually improved products, we're excited to introduce our new range of Battery Charging Units, carefully crafted by our in-house R&D team to ensure the safe charging of batteries.

Every Armorgard product is designed with the highest standards in mind, and our innovations serve as essential tools for implementing health and safety best practices. You won't find these products anywhere else, and you certainly won't find better.



INVESTORS
IN PEOPLE | Platinum

The images used throughout are for the purpose of illustration and reference only. Content may not be included as standard. Please note that dimensions are approximate.

what we stand for



our vision

We will increase productivity and make workplaces safer across the world through our innovative solutions.



our mission

Design and manufacture market-leading products for secure tool storage, efficient manual handling and improved site safety.



SHAPE (our values)



supportive

- » We treat our colleagues and our customers with respect
- » We work as a team to ensure success



honest

- » We are clear in all communication, providing assurance to our customers and colleagues
- » We build trust with all of our customers and colleagues through managing expectations



accountable

- » We do what we say we will do
- » We are accountable as a team and as individuals



passionate

- » We strive to be positive role models, demonstrating passion for our business
- » We are inquisitive and open to new ideas



excellence

- » We aim to exceed expectations through our performance
- » We always aim higher for our customers



**Robust
Secure
Trusted**

we look at things from a different angle

**Our product team
are continually
developing new,
innovative ideas**



Every product is developed in response to a need. We listen to all customers and create the perfect solutions to their problems.

Our team continue to develop excellent new products that are tough, dependable and purpose-built for your needs. Plus, we won't keep you waiting. We pride ourselves on our high stock levels and quick delivery on all stock items. If you have an idea for a new product or feedback on an existing one, we'd love to hear from you. Please send an email to **sales@armorgard.co.uk**



contents

» SECTION

» tool and equipment storage	01		
	guide to preventing tool theft from vans	10	fittingstor™ 30
	slamstop™ lid stay	12	pipestor™ 34
	intalokt™ locking mechanism	13	tuffcrate™ 36
	tuffbank™	14	forma-stor™ 38
	oxbox™	18	strimmersafe vault™ 42
	trekdror™	22	strimmersafe rack™ 43
	barrobox™	26	testimonials 44
	tuffstor cabinet™	28	
» battery charging units	02		
	guide to Li-ion batteries	48	powerstor™ 56
	F.I.R.E.E.™ technology	50	powerstation™ 60
	volthub™	52	testimonials 62
» work platforms and units	03		
	guide to dust	66	cuttingstation™ 76
	instagate™	68	sitestation™ 80
	barricade™	71	datastation™ 82
	tuffbench™	72	forma-shelta™ 85
	mobile tuffbench™	74	testimonials 86
» manual handling products	04		
	guide to manual handling	90	loadall™ 106
	safestop™ auto-engaged brake	92	rubble truck™ 114
	turntable truck™	94	flexikart™ 116
	spoolkart™	97	beamkart™ 118
	piprack™	98	t-kart™ 119
	v-kart™	102	testimonials 120
	adaptakart™	103	
» hazardous goods storage	05		
	guide to storing hazardous substances	124	safestor™ 138
	flambank™	126	forma-stor COSHH™ 140
	flamstor cabinet™	130	tuffcage™ 144
	transbank™	132	drumcage™ 145
	transbank chem™	134	gorilla gas cage™ 146
	chembank™	136	drumbank™ 148
	chemcube cabinet™	137	testimonials 152
» spare parts	06		
	spare parts	154	

SECTION



01



tool and equipment storage

tool and equipment storage

SECTION 01

guide to preventing tool theft from vans	10
slamstop™ lid stay	11
intalokt™ locking mechanism	13
tuffbank™	14
oxbox™	18
trekdror™	22
barrobox™	26
tuffstor cabinet™	28
fittingstor™	30
pipestor™	34
tuffcrate™	36
forma-stor™	38
strimmersafe vault™	42
strimmersafe rack™	43
testimonials	44

guide to preventing tool theft from vans

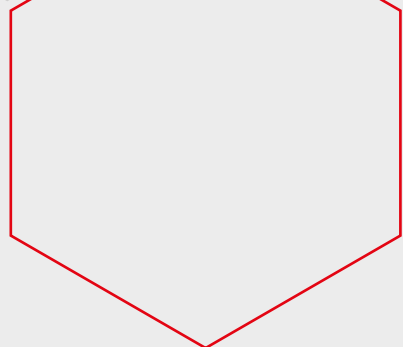
In the UK, a van is broken into every 23 minutes. Businesses and individuals across the UK are losing huge amounts of money as sophisticated thieves target vans for the tools inside. Tool theft has been around for decades, but in recent years the scale of the theft from tradesmen and business owners has reached epidemic proportions, with a 54% increase in tool theft claims across the UK. The cost of tool theft can be devastatingly expensive for tradesmen. Tools will need to be replaced whilst income could be at a complete standstill. Contracts could be lost, and customer relationships may need to be repaired.

» The law

The maximum penalty for theft is seven years' imprisonment, but sentencing is a matter for judges, who will consider the circumstances of the offence and any mitigating and aggravating factors, including financial harm and the impact of the theft. Investigations and enquiries are often limited and unsuccessful. If stolen tools are recovered, they rarely get returned to their owners because most items have no individual identification marks on them. When insurance claims are successful, the delay between making the claim and receiving the pay-out can be sufficient to put tradesmen out of business.

Criminals will usually try to sell on stolen equipment swiftly to avoid the risk of being caught in possession of the goods. Many will use online forums to sell tools at a reduced cash price.

Many tradesmen are calling for tougher penalties for thieves. They also want stricter guidelines and laws on the selling of second-hand tools. There are many campaigns in place to raise awareness of the problem, provide peer support and to lobby the Government.



» Tips for preventing tool theft from vans

1 Lock your van, and close the windows

Over half of all tool thefts are reckoned to be opportunist thefts. By locking up properly, no matter whether you're leaving the van for a minute or ten minutes, you're halving the chances of being victimised.

2 Park your van tightly in a corner to block access to the rear and side doors

Most vans come with a single sliding door on the passenger's side, so if you park it very tightly in a corner, the rear and side doors are totally inaccessible.

3 Van stickers

Whilst van stickers saying "no tools left in this van overnight" may deter thieves from breaking in, adding stickers that mention the security of your tools - such as advertising a strong alarm system - can be successful. Armorgard provide stickers for vehicles that say, "I'm protected by Armorgard" - get in touch with us if you'd like one for your van.

4 Keep receipts, pictures and an inventory of your cargo and tools

Tool theft victims often say that they wish they had proof of the tools that were in their van, because insurance companies will rarely accept less than hard evidence. Keeping a file of the receipts, keeping an up-to-date inventory of all your tools and regularly taking photos of them in your van all help to create a solid insurance claim. It will take a little time but cost you nothing on average.

5 Mark tools with a UV pen

The police recover thousands of stolen goods every year: but this work is wasted if they can't positively identify the owners. Goods are only returned if owners can provide proof that the goods are theirs. Using a UV pen is the most reliable and simplest way of doing this - it leaves an invisible mark that can only be detected using UV light. You can pick up a pack of 10 online for less than £10.

6 Van box

There are several brands of van box available on the market that can upgrade your tool security. It's worth choosing a box that is strongly built and with good reviews. Features such as anti-jemmy design, reinforcements, deadlocks and thick steel are all features to look out for when choosing the perfect van box. Every Armorgard box was carefully designed by our in-house R&D team.

**on average,
in the UK
a van is broken into every
23
minutes**



This range is packed with products that are built to keep your tools, materials and equipment safe. Our most popular range from this section is TuffBank™, offering the perfect balance between cost and best-in-class performance.



from the desk of R&D



SlamStop™ lid stay

A firm favourite among tool storage users – the **SlamStop™ lid stay**. This innovative Armorgard feature keeps the lid propped open, preventing accidental closures, and helping users stay aware of their surroundings when shutting the lid, avoiding painful finger traps.

featured in:

TuffBank™

TB1, TB12, TB21, TB2, TB3, TBC4, TBC5, TB6

SlamStop™ lid stay features in the best-selling TuffBank™ range, ensuring that the heavy lid does not cause accidental finger trapping and the lid cannot be forced close.

OxBox™

OX3, OX4, OX6

As part of the safety and strength upgrade made to the OxBox™ range, the SlamStop™ lid stay is now featured on three of the larger sizes, ensuring a secure and controlled lid closure for enhanced user safety.

TuffCrate™

TC750, TC750S

Often used to store expensive, heavy equipment, SlamStop™ lid stay features in the TuffCrate™ range to enhance user safety by securely holding the lid open, especially important in conjunction with the side panels that fully open too.

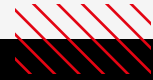
BarroBox™

BB2

The SlamStop™ lid stay is featured on the BarroBox™, to boost safety when operating its heavy-duty large lid. Paired with the gas struts that gently soften the lid closing, the BarroBox™ ensures safe handling as users effortlessly switch between a mobile and static set-up.



- » Designed to work seamlessly with the gas struts on the boxes, SlamStop™ not only ensures safety, but also makes lifting the lid effortless
- » Vital safety feature that's proven to reduce risk of injury for users and those in the surrounding area



how SlamStop™ works



The SlamStop™ lid stay holds the lid securely open, preventing it from closing until ready.



To close, simply lift the SlamStop™, and the lid can be gently lowered shut.



Gas struts ensure a controlled close, stopping the lid from slamming while the SlamStop™ is engaged.



IntaLokt™ locking mechanism

Introducing Armorgard's most advanced locking system yet: IntaLokt™ locking mechanism. Built with 4-stage protection and in a special reinforced steel housing, it takes security to a whole new level. With IntaLokt™, it's simple: no key, no entry.

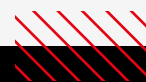
featured in:

TuffBank™

TB1, TB12, TB21, TB2, TB3, TBC4, TBC5, TB6

IntaLokt™ made its debut in the TuffBank™ range, increasing its Sold Secure and Secured by Design rating from Bronze to Silver.

- » Anti-drill plates designed to deter thieves
- » Seamless yet strong locking for enhanced security
- » Keyed-alike 5-lever deadlocks for convenience and maximum protection



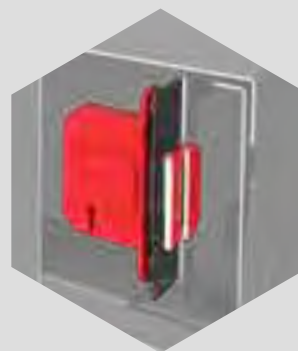
how IntaLokt™ works



Lock bolt engages with two points of contact



An anti-drill plate prevents access through the side



armorgard

tuffbank™



featuring **IntaLok™**
locking mechanism



featuring **SlamStop™**
lid stay

The best selling, most secure site storage solution.

Built to a rigorous specification with a host of innovative features, TuffBank™ sets the industry benchmark for quality and functionality. A Sold Secure silver and Secured by Design accredited product, its heavy-duty steel plate construction and unique anti-jemmy technology means that it is virtually impregnable.

ROBUST CONSTRUCTION
FROM HEAVY-DUTY STEEL
PLATE THROUGHOUT

POWDER-COATED
FOR MAXIMUM
DURABILITY

INTALOKT
KEYED ALIKE 5-LEVER
DEADLOCKS BOTH SIDES
WITH HEAVY-DUTY KEYS

CABLE PASSING POINT TO ALLOW
POWER ACCESS WITHOUT
COMPROMISING SECURITY

TB2

ANTI-DRILL
PLATE TO
PROTECT
LOCK

STRONG GAS STRUTS AND
SLAMSTOP LID STAY FITTED
AS STANDARD - CONFORMS
TO INDUSTRY STANDARDS

UNIQUE EXTERNAL
AND INTERNAL ANTI-JEMMY
SYSTEMS AND FULLY-WELDED
BOLT ON HINGES, AND
REPLACEABLE LIDS

FORKLIFT SKIDS WITH FIXING
SLOTS FOR EASILY ADDING
OPTIONAL EXTRA CASTORS
(EXCEPT TB1 AND TB12)

INSET HANDLES FOR
A MORE STREAMLINED
PRODUCT REQUIRING
LESS SPACE

FULL RANGE CAN BE
USED ACROSS VANS,
TRUCKS, WORKSHOPS
AND ON SITES



Watch the
TuffBank™
in action



TB1



TB12



TB21



TB3



TBC4



TBC5



TB6



SLAMSTOP LID STAY



“The quality and reliability of Armorgard products have proven to perform time after time”

Managing Director, Young Electrical
Registered Contractors Ltd



»» OPTIONAL EXTRAS



CRANE LIFTING EYES CLEK4

INCLUDES 4X LIFTING EYES, 4X REAR PLATES, 8X M10 COACH BOLTS AND 8X M10 LOCK NUTS GIVES WLL OF 500KG



SHELF SHE-4

A STRONG STEEL 4" SHELF TO ORGANISE YOUR TOOLS AND EQUIPMENT



POWERSHELF SHE-P4-110

PROVIDES SECURE POWER AND USB SUPPLY FOR TOOLS



6" CASTOR KIT CASS1

HEAVY DUTY RUBBER TYRE ON A STEEL CENTRE, 2X FIXED AND 2X BRAKED SWIVEL, COMPLETE WITH FIXING KIT



Product Code	Description	Weight (kg)	External Dimensions W x D x H (mm)	Internal Dimensions W x D x H (mm)
TB1	Van box	48	950 x 505 x 460	854 x 468 x 451
TB12	Truck box	59	1150 x 501 x 460	1024 x 471 x 451
TB21	Site box 2 x 2 x 2	60	760 x 620 x 640	730 x 590 x 546
TB2	Site box 4 x 2 x 2	80	1150 x 622 x 640	1120 x 590 x 546
TB3	Site box 4 x 3 x 2	94	1150 x 620 x 930	1120 x 590 x 836
TBC4	Site chest 4 x 4 x 2	125	1150 x 620 x 1265	1120 x 588 x 1170
TBC5	Site chest 5 x 4 x 2	157	1525 x 620 x 1265	1495 x 588 x 1170
TB6	Truck box 6 x 2 x 2	114	1925 x 622 x 640	1895 x 590 x 546

»» OPTIONAL EXTRAS

Product Code	Description	Suitable for
CLEK4	Crane lifting eyes	TB21, TB2, TB3, TBC4, TBC5, TB6
SHE-4	Shelf	TB12, TB2, TB3, TBC4
SHE-D4	Deep shelf	TBC4
SHE-D5	Deep shelf	TBC5
SHE-P4-110	PowerShelf	TB12, TB2, TB3, TBC4
SHE-DP4-110	Deep PowerShelf	TBC4
SHE-DP5-110	Deep PowerShelf	TBC5
CASS1	6" castor kit	TB21, TB2, TB3, TBC4, TBC5, TB6
CASS6	75mm castor kit	TB1, TB12

armorgard

oxbox™



featuring **SlamStop™**
lid stay



**The robust and dependable solution for
securing tools and equipment.**

OxBox™ tool vaults provide a fantastic combination of security and affordability. OxBox™ shares many of the premium features of our higher-priced storage box ranges, including locks, hinges, gas struts and paint finish. Its unique folded construction delivers outstanding strength. The OxBox™ is available in 6 sizes and is made from 1.5mm and 2mm steel.



KEYED ALIKE 5-LEVER
DEADLOCKS BOTH SIDES
WITH HEAVY-DUTY KEYS

SUITABLE FOR VANS, TRUCKS,
WORKSHOPS AND SITES

STRONG GAS STRUTS
FITTED AS STANDARD
- CONFORMS TO
INDUSTRY STANDARDS

STEEL PLATE CONSTRUCTION
WITH DURABLE
POWDER-COATED FINISH

FORKLIFT SKIDS WITH
FIXING SLOTS FOR EASILY
ADDING OPTIONAL EXTRA
CASTORS (OX3, OX4)

OX3



»» OPTIONAL EXTRAS



SHELF

SHE-CH4-OX4

A STRONG TOOL SHELF
FOR MAKING ORGANISING
EQUIPMENT AND STORING
SMALLER TOOLS EASIER ON SITE



OX2



OX4



OX05



OX1



OX6

**“I am really happy
with my Armorgard
OxBox, it keeps
my tools safe day
and night. A great
investment”**

Carpenter





» OPTIONAL EXTRAS



6" CASTOR KIT CASS1

HEAVY DUTY RUBBER TYRE
ON A STEEL CENTRE, 2X FIXED
AND 2X BRAKED SWIVEL,
COMPLETE WITH FIXING KIT



SLAMSTOP LID STAY



REINFORCED SIDES



Product Code	Description	Weight (kg)	External Dimensions W x D x H (mm)	Internal Dimensions W x D x H (mm)
OX05	Van box	28	810 x 469 x 381	759 x 425 x 372
OX1	Van box	32	883 x 469 x 447	832 x 425 x 439
OX2	Truck box	41	1154 x 449 x 452	1133 x 425 x 447
OX3	Site box 4 x 2 x 2	60	1207 x 622 x 643	1114 x 597 x 553
OX4	Site chest 4 x 4 x 2	89	1215 x 595 x 1184	1122 x 570 x 1094
OX6	Truck box 6 x 2 x 2	60	1739 x 511 x 441	1718 x 487 x 432

» OPTIONAL EXTRAS

Product Code	Description	Suitable for
CASS1	6" castor kit	OX3, OX4
VBFK	Van box fixing kit	OX05, OX1, OX2, OX6
SHE-CH4-OX4	Shelf	OX4

Note: Weights and dimensions are approximate. External dimensions include handles.





Our range of robust steel tool drawers for vehicles and small spaces.

TrekDror™ offers ultimate versatility to keep everything tidy and organised in your vehicle, from your power tools right down to your smallest screwdriver. TrekDror™ units are designed to fit neatly into smaller spaces and can be fixed down. Each TrekDror™ is built with corrugated steel, reinforced ribs and 5-lever deadlocks to give you that extra layer of security.



“We’re loving our new TrekDror. It’s keeping all our kit safe and secure in our water rescue vehicle”

Surrey Search and Rescue



OTHER UNIQUE FEATURES INCLUDE

- » ACCESS CONTENTS EASILY AND SAFELY
- » MULTIPLE UNITS CAN BE STACKED IN DIFFERENT WAYS
- » AVAILABLE IN 3 DIFFERENT SIZES





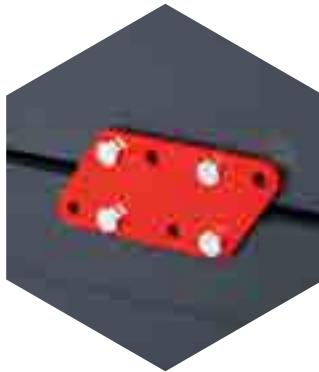
» OPTIONAL EXTRAS



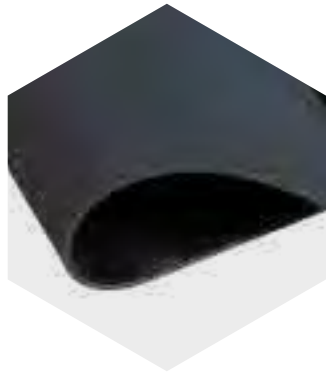
DIVIDER KIT
TKD1D, TKD2D, TKD3D
SET OF 3, ALLOWING YOU TO
EASILY ORGANISE YOUR TOOLS



MOUNTING PLATE KIT
TKDMPK
ALLOWS THE TREKDROR
TO BE MOUNTED



STACKING PLATE KIT
TKDSPK
ALLOWS THE TREKDROR
TO BE STACKED



RUBBER MAT
TKD13-RM, TKD2-RM
RUBBER MAT TO PREVENT
TOOLS FROM MOVING

Product Code	Description	Weight (kg)	External Dimensions W x D x H (mm)	External Dimensions (including drawer open) W x D x H (mm)	Internal Dimensions W x D x H (mm)
TKD1	TrekDror™	44	490 x 1105 x 300	490 x 1910 x 300	410 x 770 x 240
TKD2	TrekDror™	62	980 x 1105 x 200	980 x 1910 x 200	900 x 770 x 140
TKD3	TrekDror™	58	490 x 1105 x 490	490 x 1910 x 490	410 x 770 x 430

» OPTIONAL EXTRAS

Product Code	Description	Suitable for
TKD1D	Divider kit	TKD1
TKD2D	Divider kit	TKD2
TKD3D	Divider kit	TKD3
TKDMPK	Mounting plate kit	TrekDror™ range
TKDSPK	Stacking plate kit	TrekDror™ range
TKD13-RM	Rubber mat	TKD1, TKD3
TKD2-RM	Rubber mat	TKD2

Note: Weights and dimensions are approximate. External dimensions include handles.

armorgard

barrobox™



featuring **SlamStop™**
lid stay

**The ultimate portable tool protection
for tradesmen on the move.**

BarroBox™ is secure, robust, and extremely versatile. This one-of-a-kind, mobile site box protects your tools wherever you need to work. Easily wheel tools and equipment around on-site, then use a lever from inside the box to raise the wheels and lock to create a static, secure tool vault.



BB2

POWDER-COATED FOR
MAXIMUM DURABILITY

KEYED ALIKE 5-LEVER
DEADLOCKS BOTH SIDES
WITH HEAVY-DUTY KEYS

STRONG GAS STRUTS FITTED
AS STANDARD - CONFORMS TO
INDUSTRY STANDARDS

SLAMSTOP LID STAY FOR
ADDITIONAL USER SAFETY



ANTI-JIMMY FEATURE

LIFTING HANDLE INSTANTLY
CONVERTS BARROBOX FROM
MOBILE TO STATIC

PUNCTURE PROOF, HEAVY-DUTY
WHEELS. SUITABLE FOR SITE USE
AND ROUGH TERRAIN

ROBUST FOLDING HANDLES
ENSURE THE BARROBOX IS
EASY TO MANOEUVRE



OTHER UNIQUE FEATURES INCLUDE

- » ROBUST CONSTRUCTION FROM HEAVY-DUTY STEEL PLATE THROUGHOUT
- » WHEEL CONFIGURATION CAN'T BE CHANGED ONCE BOX IS LOCKED
- » ANTI-JEMMY FEATURES FOR INCREASED SECURITY



UNIQUE SYSTEM MEANS THAT WHEELS CAN ONLY BE MOVED UP AND DOWN FROM INSIDE



Watch the BarroBox™ in action

Product Code	Description	Weight (kg)	External Dimensions W x D x H (mm)	Internal Dimensions W x D x H (mm)
BB2	BarroBox™	81	765 x 1045 x 720	540 x 930 x 605

armorgard

tuffstor cabinet™



The ultra-tough cabinet that keeps your equipment organised and accessible.

TuffStor Cabinet™ offers the same level of security as a conventional site safe but uses less floor space. This versatile, secure cabinet keeps tools safe and easily accessible. Ideal for use in workshops and vehicles. Want it mobile? It's easy to add castors using the pre-drilled holes.

TSC3

ROBUST CONSTRUCTION
FOR MAXIMUM
PROTECTION

KEYED ALIKE 5-LEVER
DEADLOCKS BOTH SIDES
WITH HEAVY-DUTY KEYS

FULLY ADJUSTABLE
SHELVES FITTED ON
ALL SIZES

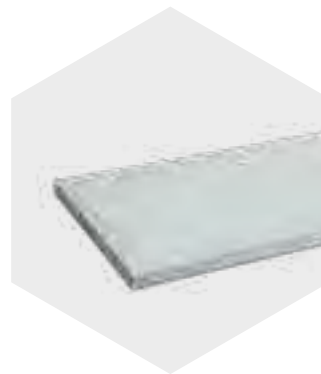
POWDER-COATED
FOR MAXIMUM
DURABILITY

HEAVY-DUTY DOORS
WITH FIXED HINGES
AND CONCEALED
ANTI-JEMMY SYSTEM

FORKLIFT SKIDS WITH
FIXING SLOTS FOR
EASILY ADDING CASTORS
(TSC2, TSC3)



» OPTIONAL EXTRAS



SHELF
SHE-C1, SHE-C2, SHE-C3
AN ADDITIONAL SHELF TO MAKE
ORGANISING AND STORING
SMALLER EQUIPMENT EASIER



FITTING BINS
FCB
TOUGH, LIFT-OUT
PLASTIC FITTINGS BINS
TO ORGANISE FIXINGS



Product Code	Description	Weight (kg)	External Dimensions W x D x H (mm)	Internal Dimensions W x D x H (mm)
TSC1	TuffStor Cabinet™	44	500 x 590 x 985	390 x 455 x 715
TSC2	TuffStor Cabinet™	74	800 x 590 x 1255	690 x 505 x 885
TSC3	TuffStor Cabinet™	113	1205 x 585 x 1570	535 x 510 x 1185 (per section)

» OPTIONAL EXTRAS

Product Code	Description	Suitable for
FCB	Fitting bins	TuffStor Cabinet™ range
SHE-C1	Shelf	TSC1
SHE-C2	Shelf	TSC2
SHE-C3	Shelf	TSC3
CASS1	6" castor kit	TCS2, TSC3

armorgard

fittingstor™



The secure storage cabinet designed to keep opportunist thieves at bay!

The high value of copper fittings and cabling means that theft is on the rise, with criminals targeting construction sites on a daily basis. Don't make it easy for them! FittingStor™ is designed to secure all of your costly M&E components and tools in one safe, easily portable location.



Watch the FittingStor™ in action



FC4



FC3



FC6



FC2

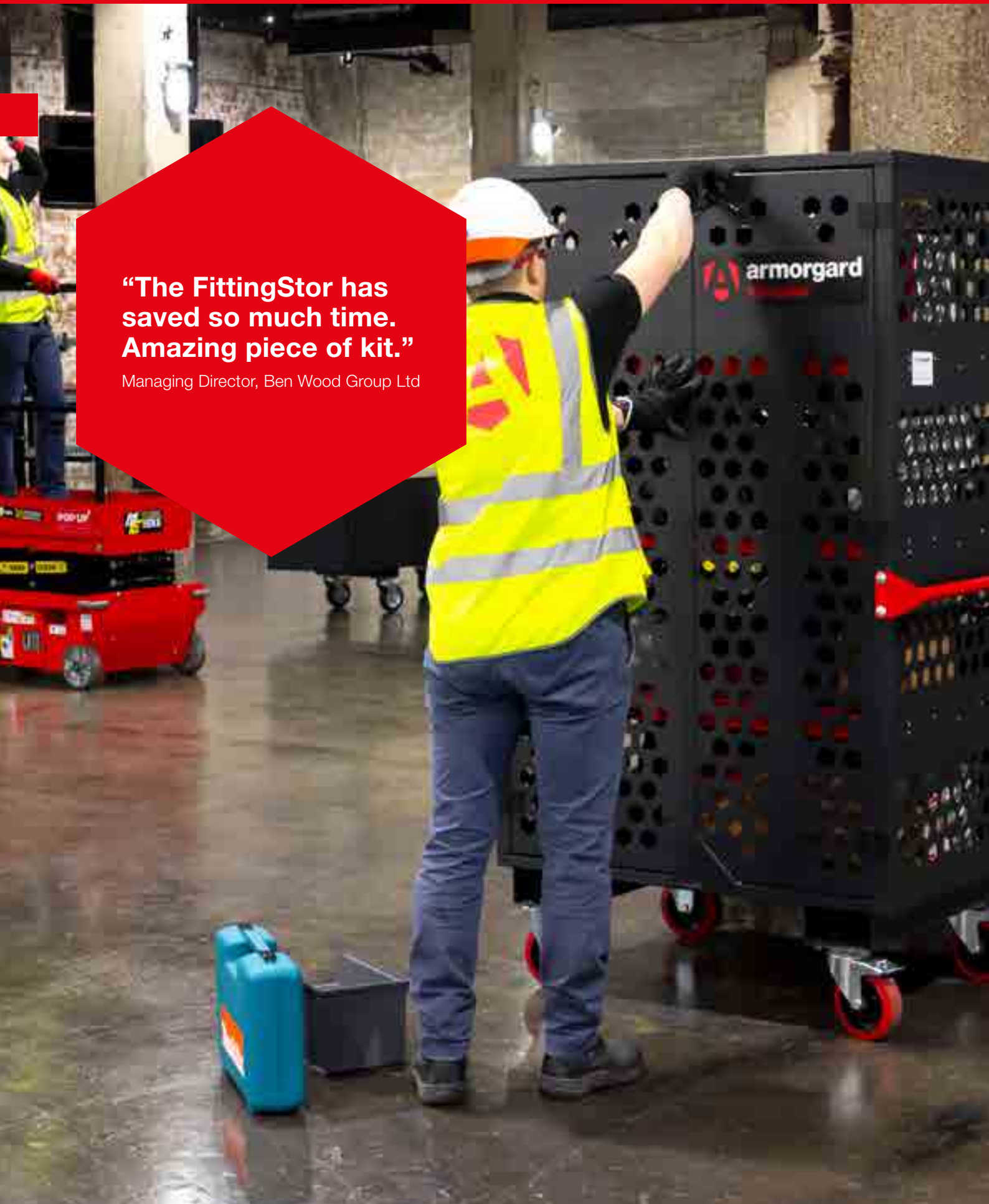


FC5



**“The FittingStor has
saved so much time.
Amazing piece of kit.”**

Managing Director, Ben Wood Group Ltd



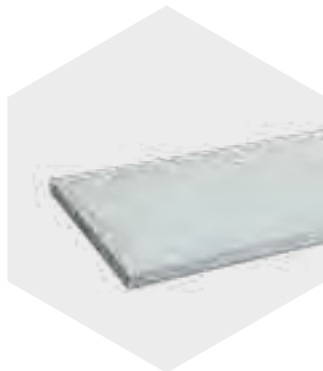


» OPTIONAL EXTRAS



FITTING BINS FCB

TOUGH, LIFT-OUT PLASTIC FITTINGS BINS TO ORGANISE FIXINGS AND FIXTURES



SHELF SHE-C2, SHE-C3, SHE-FC4

AN ADDITIONAL SHELF TO MAKE ORGANISING AND STORING SMALLER PARTS EASIER



Product Code	Description	Weight (kg)	External Dimensions W x D x H (mm)	Internal Dimensions W x D x H (mm)
FC2	FittingStor™	89	800 x 570 x 1480	710 x 510 x 915
FC3	FittingStor™	139	1205 x 580 x 1780	1130 x 510 x 1215
FC4	FittingStor™	125	1119 x 574 x 1575	1030 x 516 x 1180
FC5	FittingStor™	160	Open: 1965 x 580 x 1570 Closed: 915 x 990 x 1570	790 x 450 x 295 (per shelf)
FC6	FittingStor™	113	1080 x 765 x 1880	880 x 715 x 1540

» OPTIONAL EXTRAS

Product Code	Description	Suitable for
FCB	Fittings bins	FittingStor™ range
SHE-C2	Shelf	FC2
SHE-C3	Shelf	FC3
SHE-FC4	Shelf	FC4

 **armorgard**

pipestor™



The secure mobile storage trunk that keeps your piping safe and organised.

This innovatively designed portable ‘copper coffin’ gives you peace of mind that your piping is safe from theft. The PipeStor™ accommodates different sizes and styles of pipes, including plastic and metal conduit, trunking and cable tray. Extremely versatile - it can be extended to accommodate longer lengths by adding sections as required.



Product Code	Description	Weight (kg)	External Dimensions W x D x H (mm)	Internal Dimensions W x D x H (mm)
PS3	3m PipeStor™	133	575 x 3220 x 815	200 x 3220 x 200 (per section)
PS6	6m PipeStor™	256	575 x 6420 x 815	200 x 6420 x 205 (per section)

» **OPTIONAL EXTRAS**

Optional Extras	Description	Suitable for
PS-MS	Compartment extension	PS3

**“Pleased to see a
safe and tidy site
whilst visiting one of
our projects, helped
by Armorgard on all
work levels”**

Director, SJP Contracts Ltd



armorgard

tuffcrate™

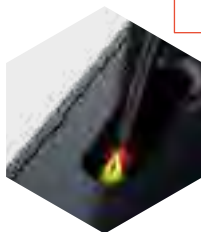


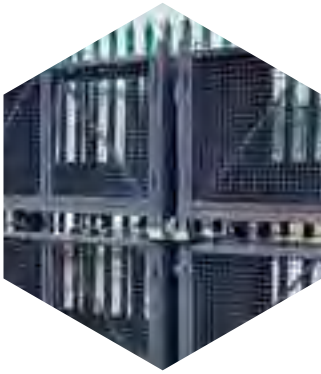
featuring **SlamStop™**
lid stay

**AVAILABLE
IN MESH
OR SOLID
SIDES**

A multi-purpose crane and fork-liftable crate for storing and transporting goods and equipment.

Created for the rail industry, but useful for any site or depot, the TuffCrate™ is designed to hold stress testing kits, but the large capacity means it can be used to store a wide range of equipment, tools and materials.





DESIGNED WITH BUILT-IN
POSTS TO EASILY STACK UNITS



TC750S



TC750



Product Code	Description	Weight (kg)	External Dimensions W x D x H (mm)	Internal Dimensions W x D x H (mm)
TC750	TuffCrate™ with mesh sides	220	1875 x 935 x 1100	1800 x 765 x 850
TC750S	TuffCrate™ with solid sides	281	1875 x 935 x 1100	1800 x 765 x 850

Note: Weights and dimensions are approximate. External dimensions include handles.



forma-stor™



**10 MIN
AVERAGE
BUILD TIME**

**FLAT-PACK
STORE**

Our quick-assembly, flat-pack, modular solution for on-site secure storage.

Forma-Stor™ is our popular secure store that can be constructed in as little as 10 minutes. With 5-lever deadlocks and jemmy-proof joins, the Forma-Stor™ is the most robust flat-pack store around. An ideal solution for contractors who need quick and convenient storage, these walk-in units are constructed using galvanised panels that fasten neatly together with very few tools.



“The flat-packed design prevents delay minutes, stoppages in work and associated costs.”

Signal & Telegraph Manager, Network Rail





STACKABLE TO
SAVE SPACE



FR100-T

OTHER UNIQUE FEATURES INCLUDE

- » AVAILABLE IN 4 STANDARD SIZES
- » FULLY GALVANISED AND POWDER-COATED FOR MAXIMUM DURABILITY
- » CAN BE DELIVERED PRE-BUILT AT AN ADDITIONAL COST



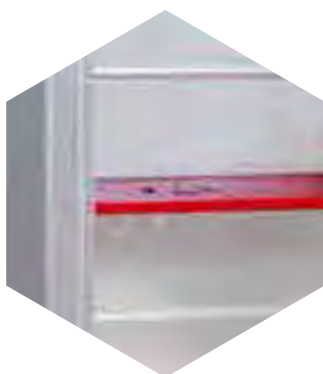
FR300-T



FR400-T



» OPTIONAL EXTRAS



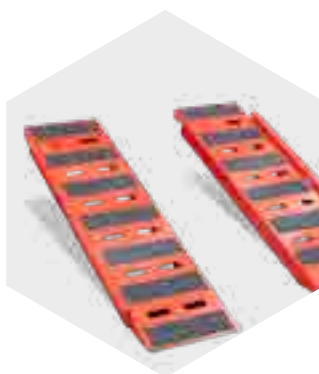
SHELF
FRS2

THIS SHELF ALLOWS YOU TO ORGANISE YOUR MATERIALS AND EQUIPMENT QUICKLY AND EASILY WITH 200KG UDL CAPACITY



BLOKKABAR SECURITY BAR
FRBL2

ENHANCE SECURITY, BARRING THE DOOR WITH 10MM THICK STEEL



RAMPS
FRR7

STRONG PEDESTRIAN RAMPS, ANTI-SLIP STUDDED SURFACE FOR INCREASED SAFETY



LED LIGHTING

FRLK1-110, FRLK1-240, FRLK2-110, FRLK2-240
ROBUST LED LIGHTS WITH 1800 LUMENS OUTPUT



Individual Panel Weight (kg)	End Panel (kg)	Door Panel (kg)	Side Panel (kg)	Roof Panel (kg)	Floor (kg)
FR100-T	55.9	76	20.7	32.6	57.5
FR200-T	55.9	76	52.9	52.9	112.3
FR300-T	55.9	76	69.1	75.8	143
FR400-T	55.9	76	114	95.2	186

Product Code	Description	Weight (kg)	External Dimensions (Including Protrusions) W x D x H (mm)	Internal Dimensions W x D x H (mm)
FR100-T	1m deep Forma-Stor™	270	2075 x 1005 x 2110	1250 x 840 x 1795
FR200-T	2m deep Forma-Stor™	380	2075 x 2010 x 2110	1250 x 1850 x 1795
FR300-T	3m deep Forma-Stor™	470	2075 x 2960 x 2110	1250 x 2800 x 1795
FR400-T	4m deep Forma-Stor™	580	2075 x 3960 x 2110	1250 x 3800 x 1795

» OPTIONAL EXTRAS

Product Code	Description	Suitable for
FRS2	Shelf	Forma-Stor™ range
FRBL2	BlokkaBar™ security bar	Forma-Stor™ range
FRR7	Ramps	Forma-Stor™ range
FRLK1-110	Lighting kit 110V	FR100-T
FRLK1-240	Lighting kit 240V	FR100-T
FRLK2-110	Lighting kit 110V	FR200-T, FR300-T, FR400-T
FRLK2-240	Lighting kit 240V	FR200-T, FR300-T, FR400-T

Note: Weights and dimensions are approximate. External dimensions include handles.



strimmersafe vault™



The ultra-tough secure vault for storing grass trimmers and other long handled tools.

The StrimmerSafe Vault™ is a secure storage range specially designed for trimmers and similar long-handled tools. Suitable for use in vehicles or workshops, this highly secure vault benefits from an ultra-tough construction and an innovative heavy-duty locking mechanism – once the lid is shut and locked, the trimmer is super secure.



INTERNAL DIVIDER SYSTEM (EXCEPT THE SSVX6)

ROBUST CONSTRUCTION FROM HEAVY-DUTY STEEL PLATE THROUGHOUT

KEYED ALIKE 5-LEVER DEADLOCKS

STRONG GAS STRUTS FITTED AS STANDARD - CONFORM TO INDUSTRY STANDARDS

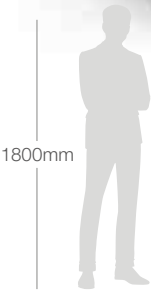
SNUG STORAGE POSITION KEEPS TRIMMERS SECURE

FULL-LENGTH COVER PLATE FOR USE WHEN TRIMMERS ARE NOT BEING STORED

POWDER-COATED FINISH FOR MAXIMUM DURABILITY

AVAILABLE IN 3 DIFFERENT SIZES

SSVX6



460mm



SSV12

445mm



SSVX6

670mm



SSV6

Product Code	Description	Weight (kg)	External Dimensions W x D x H (mm)	Internal Dimensions W x D x H (mm)
SSV12	StrimmerSafe Vault™	69	1285 x 525 x 460	1125 x 385 x 445
SSVX6	StrimmerSafe Vault™	63	1815 x 555 x 445	1660 x 430 x 435
SSV6	StrimmerSafe Vault™	141	1985 x 680 x 670	1830 x 550 x 580



armorgard

strimmersafe rack™



The unique upright storage system for securing your trimmers.

Trimmers are among the most commonly stolen power tools. The StrimmerSafe Rack™ is packed full of features to keep your equipment secure and organised whilst maximising on storage space.



BOLT TO A WALL TO
ENSURE SAFETY

IDEAL FOR LANDSCAPERS
AND GREENKEEPERS

LID IS FITTED WITH
2 GAS STRUTS FOR
EASY LIFTING

KEYED ALIKE 5-LEVER
DEADLOCKS WITH
HEAVY-DUTY KEYS

HOOK STORAGE FOR
UP TO 6 TRIMMERS

KEEPS TRIMMERS
ORGANISED WHILE
MAXIMISING STORAGE SPACE

POWDER-COATED
FOR MAXIMUM DURABILITY

MULTI-PURPOSE - CAN
ALSO BE USED FOR
STORING HEDGE CUTTERS,
LEAF BLOWERS,
CHAINSAWS, ETC

LIQUID-TIGHT BASE
CONTAINS ANY ACCIDENTAL
SPILLS OF OIL OR FUEL

SSR6



Product Code	Description	Weight (kg)	External Dimensions W x D x H (mm)	Internal Dimensions W x D x H (mm)
SSR6	StrimmerSafe Rack™	93	2055 x 540 x 2260	1935 x 365 x 2095

Note: Weights and dimensions are approximate. External dimensions include handles.

“For such a little investment, the FittingStor brings big rewards, keeping thousands of nuts, bolts and fixings tidy.”

Managing Director, Ben Wood Group Ltd

“The sturdy and secure TrekDror protects my tools which would otherwise cost thousands of pounds to replace.”

Director, KRT Electrical Services





“Going for the TrekDror was a no brainer with the recent rise in tool theft. I know it will keep my tools safe and sound day or night.”

Ornsby Electrical



SECTION

02

battery
charging
units





battery charging units

SECTION 02

guide to Li-ion batteries	48
F.I.R.E.E.™ technology	50
volthub™	52
powerstor™	56
powerstation™	60
testimonials	62

guide to Lithium-ion batteries

The popularity and use of lithium-ion (Li-ion) batteries is ever-growing as technology develops over time, production becomes more accessible, and applications become more widespread. They are used much more now compared to previous battery technologies because they have a very high energy density, meaning that you can fit a lot of power in a small space. However, this means they pose a greater fire risk than some other forms of energy storage/batteries. With this higher, tightly packed amount of energy, an unintentional chemical reaction or fault causing the energy release is much more volatile. **When Li-ion batteries fail, the aftermath can be catastrophic.**

» How Li-ion batteries can fail:

The batteries can overheat and initiate a chemical reaction known as thermal runaway. This is an irreversible reaction that releases an immense amount of energy in a short space of time – when a battery fails, it can be extremely hot and fast. Along with the heat being generated, the reaction produces toxic and flammable gases, including H₂, CO₂, CO, and hydrocarbons such as CH₄ (methane), C₂H₆ (ethane), C₂H₄ (ethylene), C₃H₈ (propane), and hydrogen fluoride.

» Why Li-ion batteries fail:

Battery packs are made up of individual cells. Inside each cell is a lithium cathode and an anode, separated by a polymer membrane that prevents physical contact between them while allowing the transfer of energy between them, which occurs during the recharge and discharge processes. It's the job of the BMS (Battery Management System) to monitor and regulate the individual cells to help prevent any failure. For example if a cell is getting too hot during use, it can regulate the power being drawn from that cell to let it cool down. Likewise during charging, if a particular cell is getting too hot, or is reaching maximum charge, the BMS can cut power to that cell to ensure a controlled charge across the battery pack.

Overall, a well-made, reputable manufacturer's lithium-ion battery pack will be fundamentally safe by default, and the BMS will do the main job of preventing the battery from overheating and going into thermal runaway. Cells used for production also have to be manufactured to very strict EU or global standards before they can enter the market, so the chances of them failing organically are exceedingly low.



» So why do they fail if they're supposed to be so safe?

In each cell, the electrodes are separated by a plastic membrane - this prevents energy from passing between the electrodes. If the electrodes do touch, a short circuit is caused which can result in a chemical reaction between the electrodes called "thermal runaway". When a Li-ion cell goes into thermal runaway, the high energy can heat up to 800°C, while also producing flammable and toxic gases.

The cause of this issue is the breakdown or failure of the separating membrane. So why does it fail?

- 1 Overheating:** This can cause deterioration of the membrane. If a cell starts getting too hot, the membrane breaks down over time, and this separation disappears.
- 2 Over-charge or deep discharge:** If a battery is overcharged, heat begins to build up, leading to overheating as described in point 1. Conversely, if a battery over-discharged for too long, metal deposits can build up on the electrodes which will eventually damage the membrane.
- 3 Physical damage:** This could be caused by dropping, getting it wet, hitting it, throwing it, or other bumps and knocks that happen to the battery, which can slowly damage the separating membrane and cause the chemical reaction to occur.

The biggest problem is that because it is an internal fault, it is very difficult to identify or foresee a failing battery. The membrane failing can take as little as a few minutes or as long as a few weeks.

» How to keep Li-ion batteries safely charged:

- 1 Battery care:** Depending on the original manufacturer and whether it's a reputable brand or not, the quality of the BMS can vary significantly. So, the first advice you should ALWAYS follow is to only ever use OEM equipment. As long as you're taking care of your batteries, storing, and charging them only in places where you would want to sit comfortably, you will massively reduce the risk of having a lithium-ion battery go into thermal runaway and fail.

- 2 Temperature:** Battery cells are quite particular, and charge in best conditions within a temperature threshold of around 15-40°C, and efficiency of the battery may become damaged in freezing or excessive heat.
- 3 Humidity:** In terms of storage humidity for Li-ion batteries, this should be no more than 50%. The main issue with lithium batteries and humidity is that condensation can build up between the terminals, which can cause a short in its circuit. In very extreme situations, this could lead to a fire. Generally, storing Li-ion batteries in a humid environment may cause the battery to spoil, and is best to avoid leaving batteries in such spaces for a prolonged period of time.
- 4 Airflow:** It is important for batteries to have adequate airflow when being stored and charged to keep them cool to reduce overheating and keep condensation to a minimum.
- 5 Isolation:** It's important to understand that because faults are near impossible to spot, fail-safes/risk assessments need to consider the batteries as a fire hazard. The best way to support this is to segregate batteries on charge from other combustible materials or high value areas. Isolation is the key to reducing propagation and a chain reaction.

#1

**fastest
growing
fire risk
in the UK**



Our dedicated range of safe and secure battery charging units includes VoltHub™, an industry favourite. The unit was designed in response to the need for a reliable unit to keep batteries stored and charged. VoltHub™ proactively keeps Li-ion batteries charged in optimum environments, while also featuring reactive technology to minimise consequences in the event of a battery fire.



from the desk of R&D

F.I.R.E.E.TM technology

FIRE

Tackling the UK's #1 fastest-growing fire risk head-on, the Armorgard R&D team has been hard at work researching the topic and designing the ultimate solution for safe lithium-ion battery charging. Introducing F.I.R.E.E.TM Technology — the world's first proactive and reactive system built to keep lithium-ion batteries safe while charging.

featured in:

VoltHubTM

VH16-110, VH16-240

VoltHubTM, the indoor or outdoor, IP55 rated, 16-locker mobile charging unit, was the first Armorgard product to feature our advanced F.I.R.E.E.TM Technology. It's been rigorously tested and trusted by professionals across industries as the ideal battery charging solution on depots and sites, especially when mobility is a must.

PowerStorTM

PWR1, PWR2

PowerStorTM: the walk-in, open-shelved storage solution designed to keep lithium-ion battery charging safe and efficient. Featuring our cutting-edge F.I.R.E.E.TM Technology, it's the ultimate choice for those needing a secure, designated area to charge larger equipment, bringing you peace of mind and the trusted reliability Armorgard is known for.



- F** Fire suppressant
- I** Isolation
- R** Restrict thermal energy
- E** Exhaust out gases
- E** Environmental control



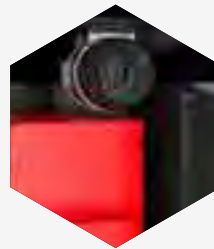
Proactive care for your batteries



Power cut-off
when the internal
temperature reaches
60°C or more



Thermostatic
heater keeps the
temperature at
optimum levels



Forced ventilation to
keep air flowing
through the unit



Isolator switch
for power



Reactive care for your batteries



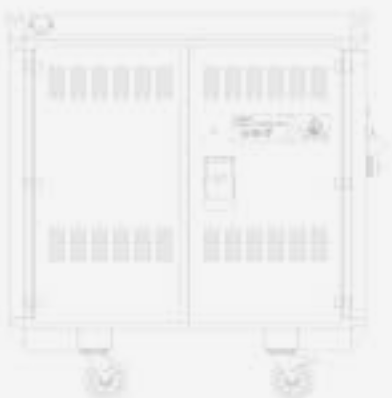
Visual and audible
alarm when there
is a fire



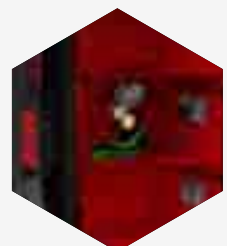
Fire suppression
system for responding
to Li-ion battery fires



Fan will operate
when there is a fire



GSM phone and
text alert when
there is a fire



Smoke detection




Patent number 2301393.1



A secure, mobile unit to safely charge lithium-ion batteries on site. Automatic fire suppression in the event of a fire.

FEATURING
FIRE
TECHNOLOGY

Introducing VoltHub™, a world first solution to charging Li-ion batteries safely. All-in-one, mobile, indoor and outdoor use, IP55 rated unit that constantly and proactively reduces fire risks, and dramatically reduces the consequences of a battery fire breakout. With purpose-built features to care for batteries, the unit always keeps them charged under optimal conditions, lowering the risk of fire to begin with.

FORCED VENTILATION
WITH AUTOMATIC
TEMPERATURE
MANAGEMENT

VISUAL AND AUDIBLE
ALARM ALERTS YOU WHEN
THERE IS A FIRE INSIDE THE
VOLTHUB AND YOU NEED
TO MAKE CONTACT WITH
EMERGENCY SERVICES

CERTIFIED FIRE
SUPPRESSION SYSTEM,
SPECIFIC FOR DEALING WITH
LITHIUM-ION BATTERY FIRES

REPAIRABLE AFTER A FIRE

VH16-240

**AVAILABLE
IN 110V
OR 240V**



Watch the
VoltHub™
in action

16 INDIVIDUAL LOCKERS THAT
CAN BE PADLOCKED AND
USED INDEPENDENTLY

LARGER LOCKERS TO
ACCOMMODATE
LARGER POWER TOOLS

FORKLIFT
SKIDS



OTHER UNIQUE FEATURES INCLUDE

- » 110V OR 240V OPTION AVAILABLE FOR INTERNAL AND EXTERNAL USE - TAKE IT WHERE YOU NEED IT
- » WEATHERPROOF, HIGHLY SECURE (CERTIFIED IP55 RATED) DOORS
- » RCD INDIVIDUALLY PROTECTED SOCKETS



BIODEGRADABLE FIRE SUPPRESSION FOAM



“Provides peace of mind that we’re charging our batteries safely. One of the very finest systems I’ve ever used on a site. A necessity.”

Site Manager, Century Facades





» ADDITIONAL FEATURES



VISUAL AND AUDIBLE
ALARM WHEN THERE
IS A FIRE



FIRE SUPPRESSION
SYSTEM FOR
RESPONDING TO LI-ION
BATTERY FIRES



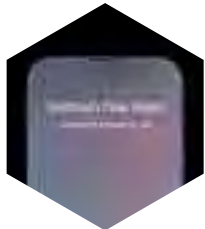
EARLY GAS AND
SMOKE DETECTION



HUMIDITY SENSOR
ACTIVATES THE FAN AND
HEATER SYSTEMS TO
KEEP BATTERIES DRY



PADLOCKABLE
LOCKER DOORS



GSM PHONE AND
TEXT ALERT WHEN
A FIRE IS DETECTED

Product Code	Description	Weight (kg)	External Dimensions W x D x H (mm)	Internal Dimensions W x D x H (mm)
VH16-110	VoltHub™ 110V secure charging cabinet with lockers	334	1770 x 750 x 1820	Small locker: 250 x 360 x 262 Large locker: 475 x 355 x 260
VH16-240	VoltHub™ 240V secure charging cabinet with lockers	334	1770 x 750 x 1820	Small locker: 250 x 360 x 262 Large locker: 475 x 355 x 260

Note: Weights and dimensions are approximate. External dimensions include handles.



powerstor™



FEATURING
FIRE
TECHNOLOGY

Safely and securely charge lithium-ion tool batteries on site with the PowerStor™.

Integral security is at the heart of the design, from the folded sheet steel construction to the twin 5-lever deadlocks. For your safety, a stand-alone fire suppression system comes as standard. Automatically activated by heat or smoke, this helps to protect the unit and its contents at all times. Fork pockets & crane lifting eyes enable you to easily reposition this unit as required – isolate it to minimise fire risk, or keep it right by the site offices for easy management.





OTHER UNIQUE FEATURES INCLUDE

- » FULLY GALVANISED AND POWDER-COATED FOR MAXIMUM DURABILITY
- » STAND-ALONE AUTOMATIC FIRE SUPPRESSION SYSTEM
- » SAFELY CHARGE TOOL BATTERIES ON SITE IN A SINGLE EASILY MANAGED UNIT



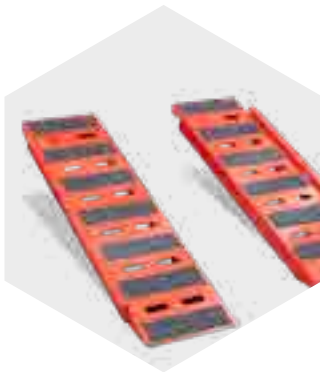
“The PowerStor charging unit has significantly streamlined our day-to-day operations by providing a safe, organised charging area with ample sockets.”

Network Rail





»» OPTIONAL EXTRAS



RAMPS
FRR7

STRONG PEDESTRIAN RAMPS,
ANTI-SLIP STUDDED SURFACE
FOR INCREASED SAFETY



BLOKKABAR SECURITY BAR
FRBL2

ENHANCE SECURITY,
BARRING THE DOOR WITH
10MM THICK STEEL



LOCKABLE SHELVES
FRLS2

TURNS EACH SHELF INTO ITS
OWN PADLOCKABLE SECTION

Product Code	Description	Weight (kg)	External Dimensions W x D x H (mm)	Internal Dimensions W x D x H (mm)
PWR1	1m deep PowerStor™	393	2158 x 1024 x 2100	1920 x 842 x 1898
PWR2	2m deep PowerStor™	540	2158 x 2037 x 2100	1920 x 1851 x 1898

»» OPTIONAL EXTRAS

Product Code	Description	Suitable for
FRR7	Ramps	PowerStor™ range
FRBL2	BlokkaBar™ security bar	PowerStor™ range
FRLS2	Lockable shelves	PowerStor™ range

Note: Weights and dimensions are approximate. External dimensions include handles.



powerstation™

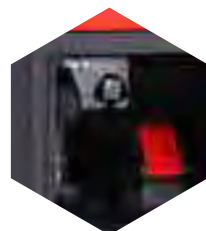


A new and improved version of our secure, battery charging solution for low risk batteries.

Powered equipment and mobile devices are especially vulnerable to theft when being charged on site. Our PowerStation™ is a bank of 6 or 12 secure charging lockers that allows you to charge your equipment unattended, confident in the knowledge that it is safe from thieves.



DOUBLE 230V SOCKETS
FOR CHARGING BATTERIES



INDIVIDUAL
CAM LOCKS

DETECTABLE RCD
PROTECTED UNIT

PWS12K



PWS6K



THICKER AND
STURDIER UNITS TO
BETTER WITHSTAND
DAILY SITE USE

KEY OR PADLOCK CAM
LOCKS FOR SIMPLE
MAINTENANCE

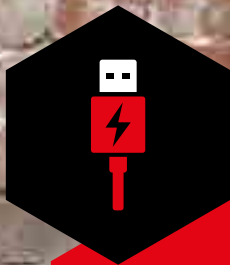
PERFORATED HOLES
TO HELP VENTILATION
AND AIR FLOW

SPACIOUS LOCKER SPACE
EASILY FITS LARGE
BATTERY CHARGERS

REPLACEABLE
DOORS

FLOOR PROTECTING
GLIDING FEET

Product Code	Description	Weight (kg)	External Dimensions W x D x H (mm)	Internal Dimensions W x D x H (mm)
PWS6K	6 locker, key camlock, 240v	45	315 x 453 x 1803	Single locker: 310 x 370 x 290
PWS6P	6 locker, padlock camlock, 240v	45	315 x 453 x 1803	Single locker: 310 x 370 x 290
PWS12K	12 locker, key camlock, 240v	76	600 x 453 x 1803	Single locker: 310 x 370 x 290
PWS12P	12 locker, padlock camlock, 240v	76	600 x 453 x 1803	Single locker: 310 x 370 x 290



**USB CHARGING
SOCKETS UPGRADE
AVAILABLE AT A
MINIMUM ORDER
QUANTITY**



“We now have a perfect designated unit to safely charge batteries.”

Stores Assistant, Balfour Beatty Vinci

“There are paintings and art in this building that we’re restoring. Our main risk is fire, and we’re using VoltHub to keep this risk low. 100% recommend.”

Site manager, Robertson Construction North West



“The automatic fire suppression makes things much safer - if something was to catch fire, it would be contained in the unit.”

PWay Team Leader, Network Rail





“The VoltHub contained a fire on our site, preventing what could have been a severe operational setback. With a site turnover of approx. £250,000 a week, downtime would have had severe financial implications.”

Senior Build Manager, Willmott Dixon



SECTION

03

work
platforms
and units





work platforms and units

SECTION 03

guide to dust	66
instagate™	68
barricade™	71
tuffbench™	72
mobile tuffbench™	74
cuttingstation™	76
sitestation™	80
datastation™	82
forma-shelta™	85
testimonials	86

guide to dust

Construction dust is a killer. Working with MDF, regularly breathing in dust, caused by cutting or grinding construction materials, can cause life-changing lung diseases which can lead to death. If you're a construction worker or a tradesman, you need to protect yourself from the danger; if you're an employer you must take steps to prevent injury to your workforce.

Some of these diseases, such as advanced silicosis or asthma can develop quickly, but most take longer with no obvious symptoms until the damage is done.

The UK construction industry has the largest number of reported cases of occupational lung disease of any industry.

- 1** Over 500 construction workers die from exposure to silica dust every single year
- 2** The Control of Substances Hazardous to Health Regulations 2002 (COSHH) cover activities that may expose workers to construction dust
- 3** Around 4,000 people die every year from Chronic Obstructive Pulmonary Disease (COPD) linked to work
- 4** Construction is among the top 5 industries for deaths from COPD
- 5** 3,500 occupational cancer deaths are caused by exposure in the construction industry
- 6** COSHH regulations set a limit on the amount of dust you can breathe called a Workplace Exposure Limit or WEL
- 7** Protective masks are only effective if they have been "face-fitted". Masks rely on a tight seal with the face
- 8** Workers can still breathe in harmful levels of dust when working outside



» The most serious dust-related diseases

1. Asthma
2. Lung Silicosis
3. Cancer
4. COPD

Assessing the risks involves looking at tasks, work areas, the time needed to complete a task and how often that task needs to be carried out.

It's fairly obvious, but the danger to workers increases when using high energy tools that produce a lot of dust in a short time (such as cut-off saws, grinders and grit blasters); when working in an enclosed space; when the task takes a long time and when the same task is carried out frequently.

» What you can do

Under the COSHH guidelines there are very specific controls set out for common high-risk tasks. They fall under common-sense headings such as stopping or reducing the dust; controlling the dust with water or on-tool extraction through a local exhaust ventilation (LEV) system; and using respiratory protective equipment (RPE).

If you are self-employed or an employer you should familiarise yourself with the guidelines, risks and controls. If you are employed, you should make sure you understand any information provided to you by your employer, check that controls are in place to make your workplace safe and ensure that you're provided with appropriate PPE including a face-fitted mask.

» Make these high-risk tasks safe

- 1 Cutting roofing tiles:** use a dedicated cutting area with scaffold board protection and water suppression
- 2 Sanding plasterboard jointing/drilling holes with handheld rotary tools:** use direct fastening tools and use cutting station
- 3 Removing small rubble, dust and debris:** use rubble truck and water spray for damping down, covered skips, RPE with APF of 20 (correct protective personal equipment)

approximately
4,000
 people die
 each year
 from work-related
COPD



Our Work Platforms and Units are designed to give you reliable work surface and much more, making your working life so much easier. Our most popular range from this section is CuttingStation™, engineered to reduce dust and noise and increase safety whilst cutting.

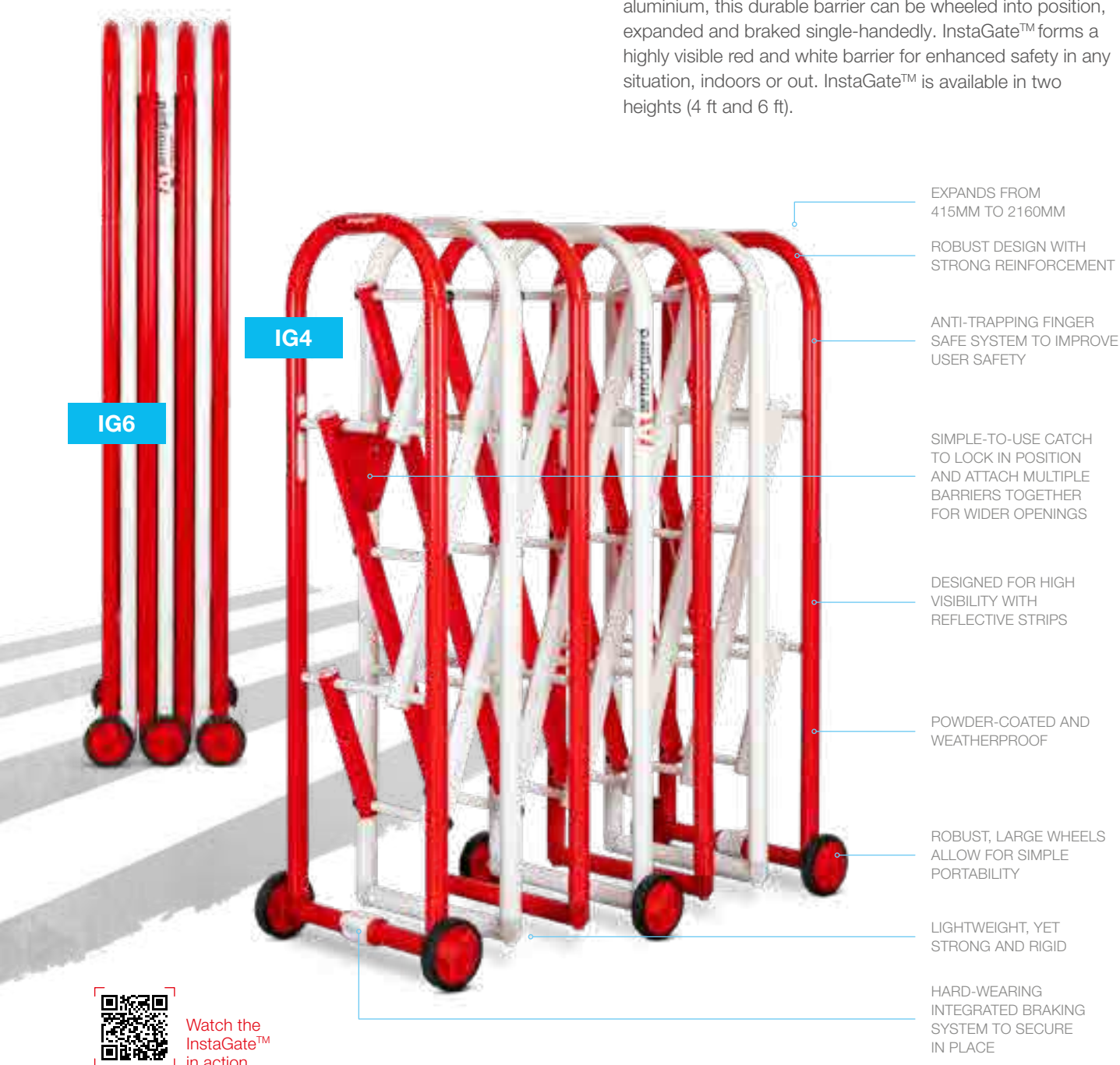


instagate™



An expandable barrier for crowd/traffic control in any location.

InstaGate™ is a quick-to-deploy barrier that's robust and easy to extend to full length. Constructed from strong, lightweight aluminium, this durable barrier can be wheeled into position, expanded and braked single-handedly. InstaGate™ forms a highly visible red and white barrier for enhanced safety in any situation, indoors or out. InstaGate™ is available in two heights (4 ft and 6 ft).





**“The Armorgard
InstaGate is excellent,
as expected”**

BAM Construction Ltd



IG4

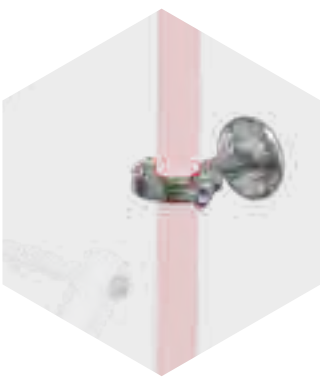


IG6

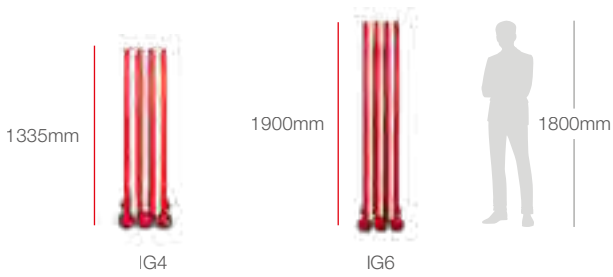
» OPTIONAL EXTRAS



LINKING KIT
IGL1
LINK TOGETHER
MULTIPLE INSTAGATE™



ANCHOR KIT
IGA1
FIX YOUR INSTAGATE™
TO A FLAT SURFACE



Product Code	Description	Weight (kg)	Folded Dimensions W x D x H (mm)	Extended Dimensions W x D x H (mm)
IG4	4ft InstaGate™	30	520 x 405 x 1335	520 x 2160 x 1335
IG6	6ft InstaGate™	38	520 x 410 x 1900	520 x 2330 x 1900

» OPTIONAL EXTRAS

Product Code	Description	Suitable for
IGL1	Linking kit	InstaGate™ range
IGA1	Anchor kit	InstaGate™ range



armorgard

barricade™

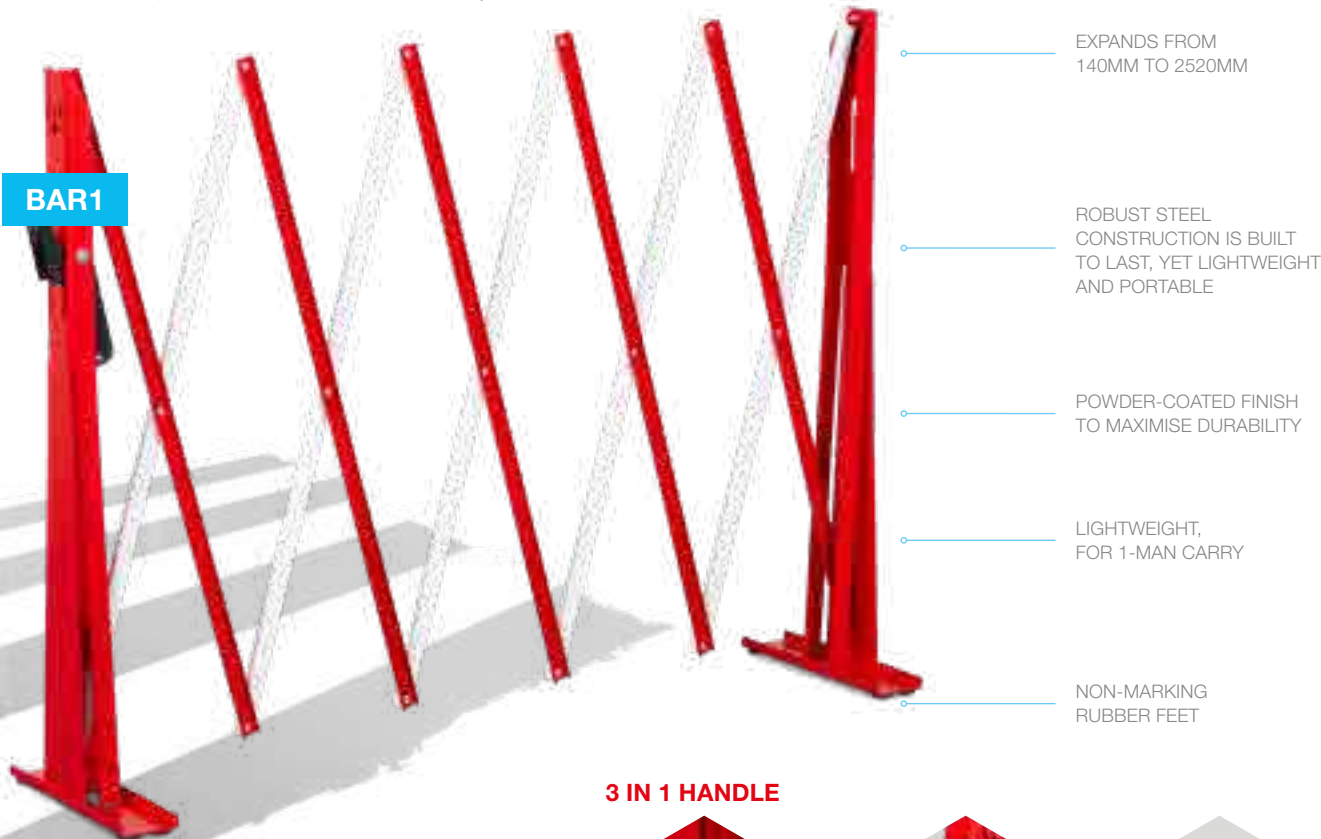
Patent number: 2109709.2



The expandable safety barrier to clearly mark out safe working areas or restricted areas.



The Barricade™ is a highly visible concertina barrier: the perfect partner for those looking to clearly mark out a safe working area. Manufactured with a robust steel channel structure that has no detachable parts and a durable powder-coat finish, the Barricade™ is built to last.



BAR1

EXPANDS FROM
140MM TO 2520MM

ROBUST STEEL
CONSTRUCTION IS BUILT
TO LAST, YET LIGHTWEIGHT
AND PORTABLE

POWDER-COATED FINISH
TO MAXIMISE DURABILITY

LIGHTWEIGHT,
FOR 1-MAN CARRY

NON-MARKING
RUBBER FEET

3 IN 1 HANDLE



HOLDS THE BARRIER
TOGETHER WHEN
FOLDED



PRESENTS A HANDLE
TO MAKE CARRYING
EASIER AND SAFER



CAN BE
DAISY-CHAINED
TOGETHER

Product Code	Description	Weight (kg)	Extended Dimensions W x D x H (mm)	Folded Dimensions W x D x H (mm)
BAR1	Barricade™	8	300 x 2516 x 826	300 x 136 x 826



tuffbench™



The versatile and easy-to-use mobile work platform from Armorgard.



The TuffBench™ heavy-duty folding work platform is a versatile workbench designed for contractors on the move and for use on construction sites. Its quick and easy assembly system – with no detachable parts – makes it easy to transport and store. When it's time to move on, simply collapse the platform, fold the legs and you're ready to go! Durable and built to last, the surface is manufactured from sustainable pressed timber.


BH10

HEAVY-DUTY 300 KG
LOAD CAPACITY

DURABLE TIMBER
WORK SURFACE

FOLDING LEGS
SECURED WITH A
CHAIN WHEN SHUT

METAL EDGE FLUSH
WITH WOODEN
WORK SURFACE

POWDER-COATED FRAME
FOR LONG-LASTING
DEPENDABILITY

NO DETACHABLE PARTS -
STAYS TOGETHER AS
ONE UNIT

OPTIONAL EXTRAS
INCLUDE CHAIN VICE
AND ENGINEERS' VICE

COLLAPSIBLE
FOR EASY STORAGE AND
TRANSPORTATION





» OPTIONAL EXTRAS



HANDLE AND WHEEL KIT **BH10-HW**

FIXES ONTO THE UNIT TO EASE TRANSPORTATION OF THE BENCH ONCE FOLDED, MAKING IT QUICK AND EASY TO MOVE AROUND SITE



6" ENGINEERS' VICE **EV6**

CAN BE EASILY FIXED ONTO THE STURDY WOODEN WORKTOP SO YOU CAN DO MORE WITH YOUR WORK SURFACE



4" CHAIN VICE **CV4**

CAN BE EASILY FIXED ONTO THE STURDY WOODEN WORKTOP SO YOU CAN DO MORE WITH YOUR WORK SURFACE



BH10-HWVF

BH10-HWF

Product Code	Description	Weight (kg)	External Dimensions W x D x H (mm)	Folded Dimensions W x D x H (mm)
BH10	TuffBench™	28	750 x 1080 x 825	750 x 1080 x 135
BH10-HWF	TuffBench™ with handle and wheel kit	31	750 x 1080 x 825	750 x 1080 x 135
BH10-HWVF	TuffBench™ with handle, wheels and vices	58	855 x 1140 x 970	855 x 1140 x 280

» OPTIONAL EXTRAS

Product Code	Description	Suitable for
BH10-HW	Handle and wheel kit	BH10
EV6	6" engineers' vice	BH10, BH10-HWF
CV4	4" chain vice	BH10, BH10-HWF

Note: Weights and dimensions are approximate. External dimensions include handles.

armorgard

mobile tuffbench™



**The universal mobile workbench
that's also a heavy-duty cabinet!**

Use the Armorgard Mobile TuffBench™ for a day and you'll wonder how you ever got by without it. A combination of heavy-duty storage cabinet and multi-purpose work surface, this innovative workbench makes any job that bit easier, while ensuring that your tools and equipment remain safe from thieves and damage. Its ultra-tough surface is ideal for fixing a chain vice, engineers' vice and other equipment, making it indispensable for M&E contractors when pipe threading and bending.





MBH12-VF

Product Code	Description	Weight (kg)	External Dimensions W x D x H (mm)	Internal Dimensions W x D x H (mm)
MBH12	Mobile TuffBench™	96	1200 x 700 x 950	995 x 660 x 520
MBH12-VF	Mobile TuffBench™ with vices fitted	125	1290 x 805 x 1080	915 x 640 x 515

» **OPTIONAL EXTRAS**

Product Code	Description	Suitable for
EV6	6" engineers' vice	MBH12
CV4	4" chain vice	MBH12

Note: Weights and dimensions are approximate. External dimensions include handles.

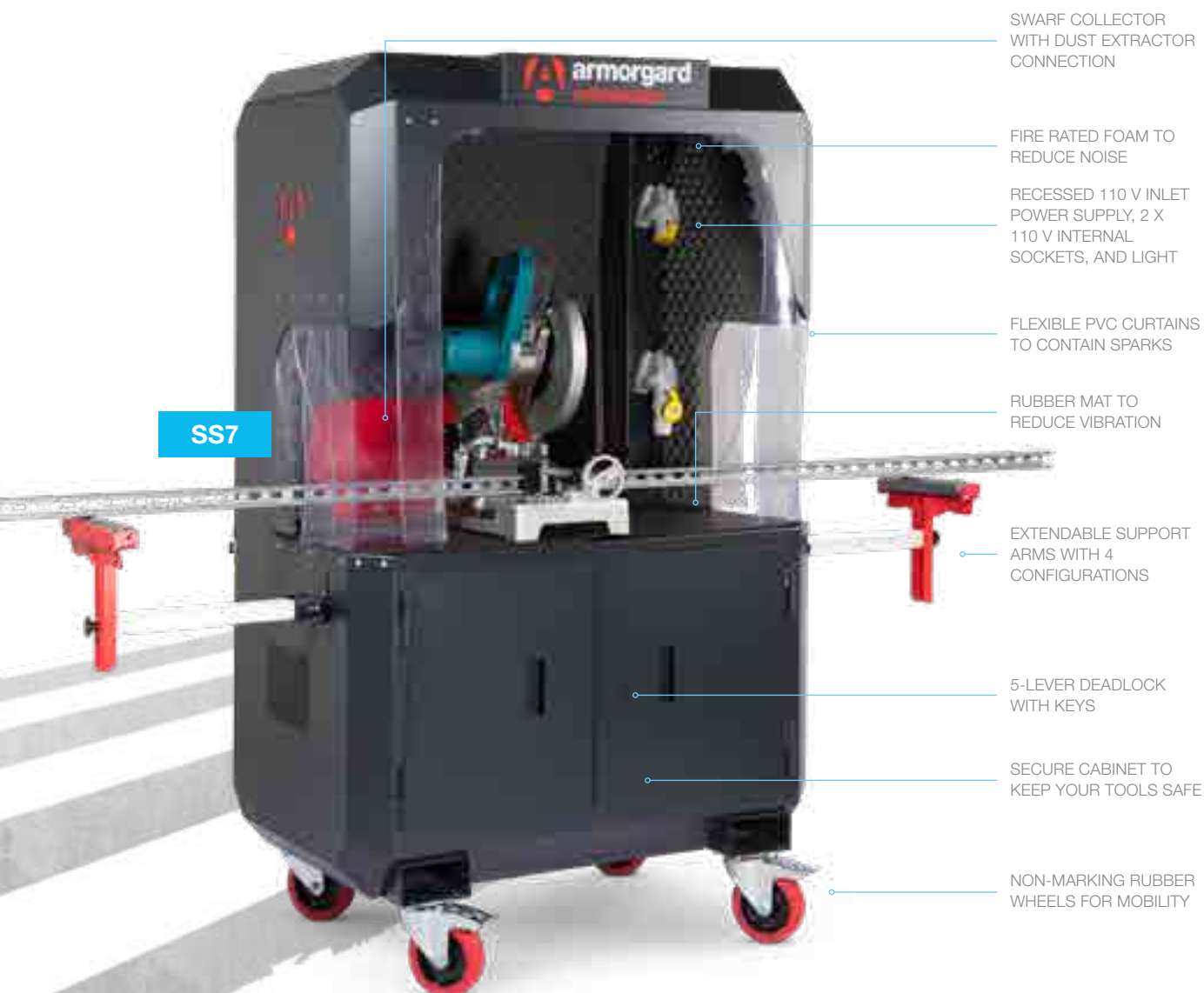


cuttingstation™



A go-anywhere, multi-purpose cutting station with unrivalled safety features to minimise vibration, sparks, noise and dust.

Our ever-popular Armorgard CuttingStation™ is a neat mobile workstation that eliminates the need for a separate cutting room and is essential for safely cutting lengths of material, such as conduit, timber, cable tray and pipe. The model includes lighting and chamfered corners to further reduce noise. You'll also find an expandable working area to accommodate mitre saws and cutaway sides for handling longer materials.





THE 4 CONFIGURATIONS OF THE EXTENDABLE SUPPORT ARMS



FLAT SURFACE
IDEAL FOR LONG
LENGTHS



ROLLER SURFACE
IDEAL FOR LONG
LENGTHS



V-SHAPE
IDEAL FOR
ROUND PIPES



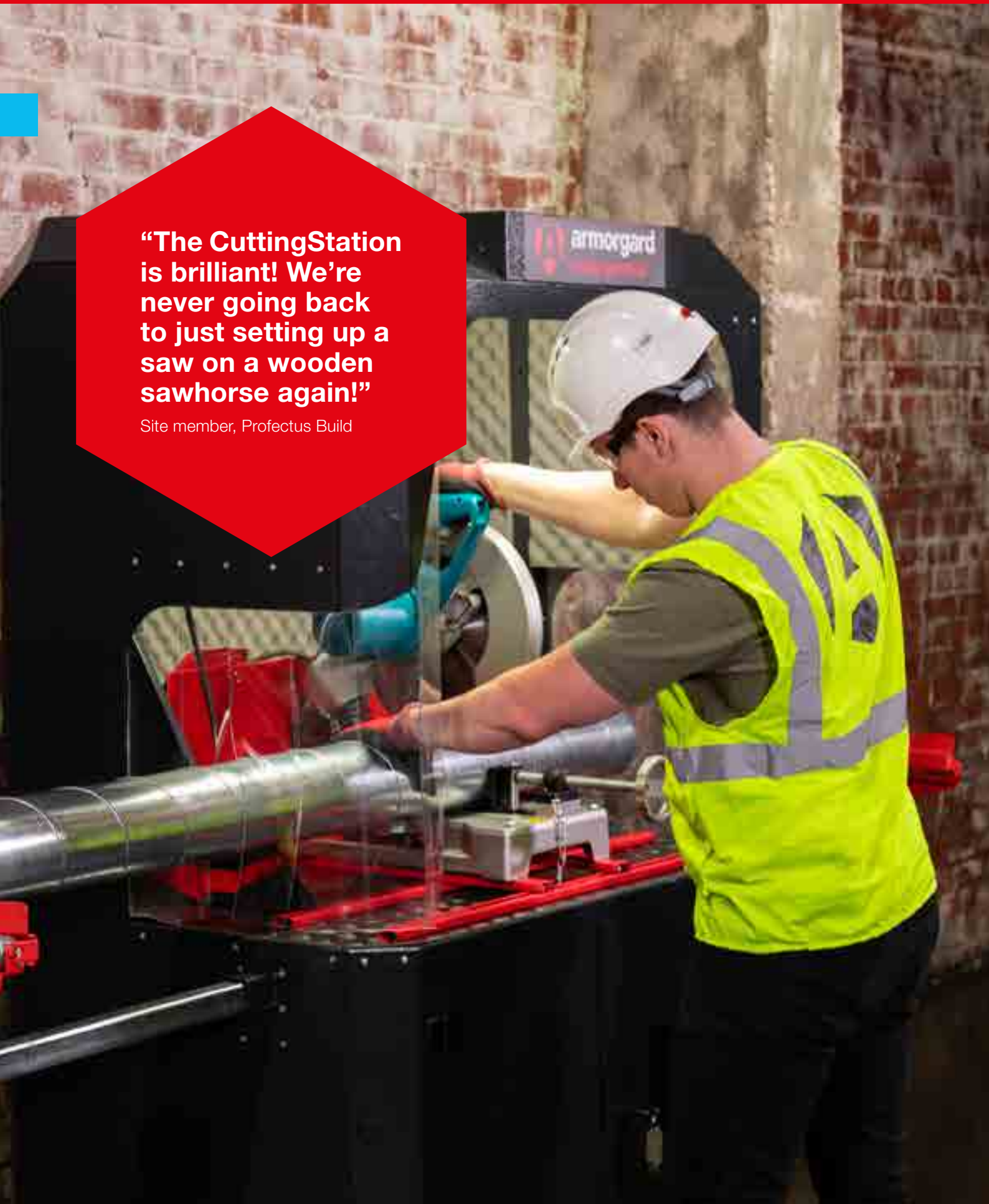
FLAT EDGE
IDEAL FOR REPEAT
CUT LENGTHS

EXTENDABLE BACK CAN
RETRACT FOR UNIT TO
GO THROUGH
STANDARD DOORWAYS



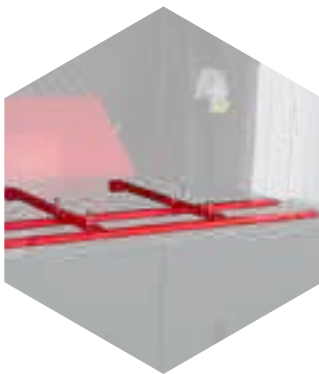
“The CuttingStation is brilliant! We’re never going back to just setting up a saw on a wooden sawhorse again!”

Site member, Profectus Build





» OPTIONAL EXTRAS



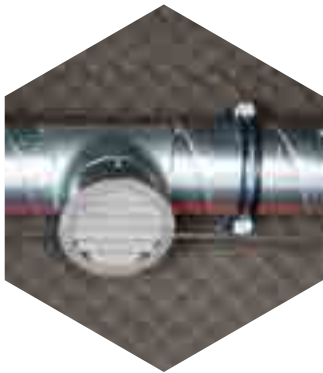
CLAMP
SS7C

HOLDS ELECTRIC SAWS IN PLACE WHILE BEING USED, TO IMPROVE H&S BEST PRACTICES



CRANE LIFTING EYES
CLEK2

KIT INCLUDES 2X LIFTING EYES, 2X REAR PLATES, 8X M10 COACH BOLTS AND 8X M10 LOCK NUTS



EXTRACTION SYSTEM HELPS TO CONTAIN DUST AND REDUCES EXPOSURE TO HARMFUL SUBSTANCES

NARROW ENOUGH TO FIT THROUGH STANDARD DOORWAYS

EASY ACCESS WITH CUT-OUT FRONT

COMES WITH HUSQVARNA AIR SCRUBBER



SS7X

Product Code	Description	Weight (kg)	External Dimensions W x D x H (mm)	Internal Dimensions W x D x H (mm)
SS7	CuttingStation™	175	Standard: 2960 x 778 x 1910 Extended: 3225 x 1090 x 1900	Top (With Extended Back): 1144 x 750 x 700 Bottom: 1125 x 710 x 550
SS7X	CuttingStation™ with extraction system	200	Standard: 2960 x 778 x 1910 Extended: 3225 x 1090 x 1900	Top (With Extended Back): 1144 x 750 x 700 Bottom: 1125 x 710 x 550

» OPTIONAL EXTRAS

Product Code	Description	Suitable for
SS7C	Clamp	CuttingStation™ range
CLEK2	Crane lifting eyes	CuttingStation™ range

Note: Weights and dimensions are approximate. External dimensions include handles.

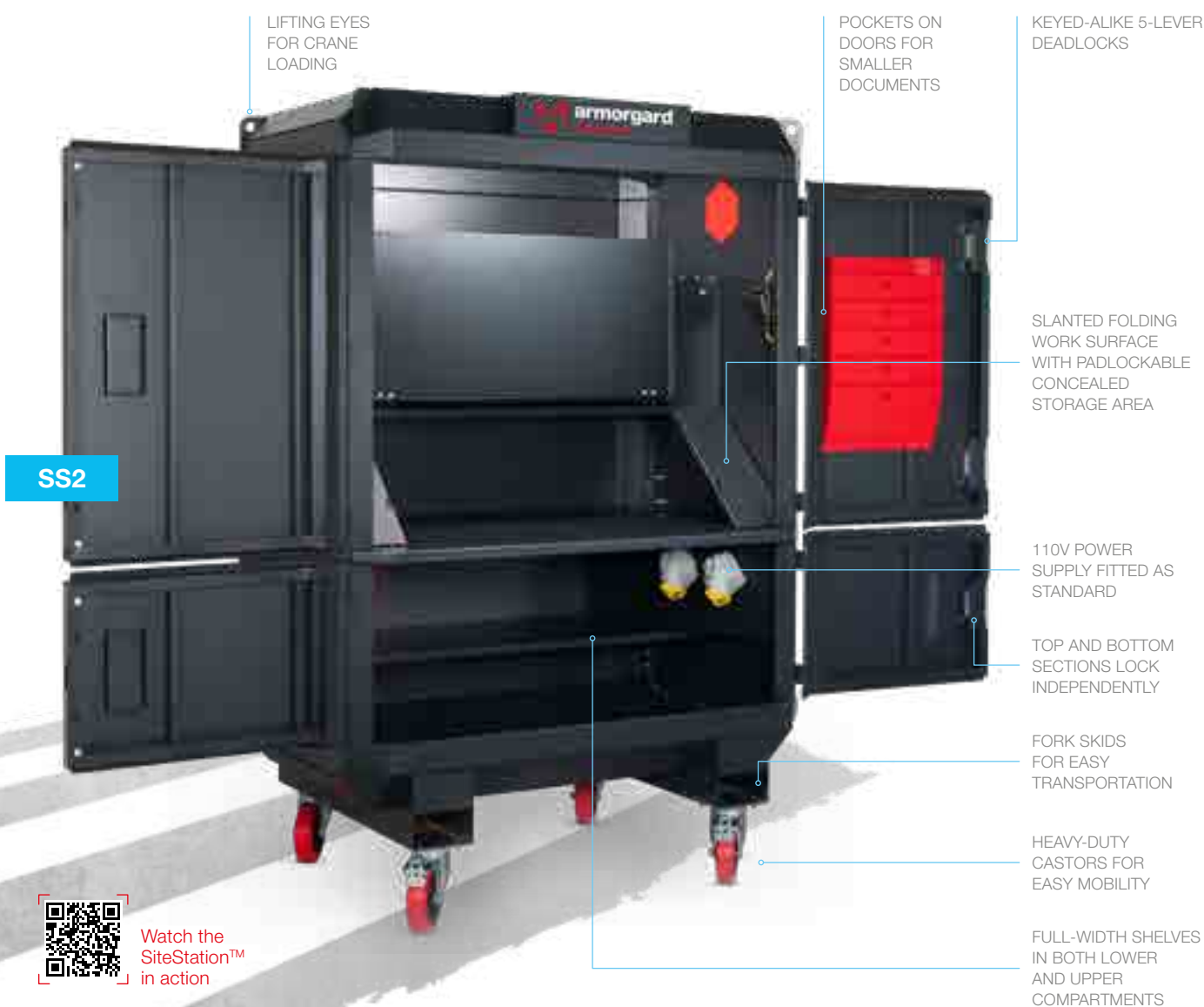
armorgard

sitestation™



A purpose-built solution for your on-site work station needs.

The innovatively designed Armorgard SiteStation™ gives you a convenient place for routine on-site tasks, while also providing secure storage for your valuable equipment. The top section features a folding drawing board ideal for displaying plans and charts – that provides additional lockable storage when shut – ideal for power tools, PPE and fixings.





OTHER UNIQUE FEATURES INCLUDE

- » EASY TO MANOEUVRE AROUND SITES
- » ROBUST CONSTRUCTION FOR MAXIMUM PROTECTION
- » 110V LED LIGHT FITTED AS STANDARD



Product Code	Description	Weight (kg)	External Dimensions W x D x H (mm)	Internal Dimensions W x D x H (mm)
SS2	SiteStation™	223	1400 x 845 x 1965	Top: 960 x 735 x 900 Bottom: 1175 x 735 x 415

Note: Weights and dimensions are approximate. External dimensions include handles.



Registered design: 6314638




AVAILABLE
IN 110V
OR 240V

Revolutionise the way your team delivers projects with this compact on-site digital station.

Quickly access all the information at your fingertips, power your laptop and view your up-to-date plans, procedures, and documents digitally. The DataStation™ is a simple addition that shows real commitment towards industry 4.0, allowing you to work sustainably and efficiently away from the office. Easily manoeuvrable with heavy-duty castors, so you can take it wherever you need it. Armed with effective security: keyed alike 5-lever deadlocks for secure storage of valuable office equipment or power tools.

WHITEBOARD
INCLUDED

SCREEN LOCKING
BRACKET FOR
TRANSPORT

DS2-110

LIFTING EYES FOR
CRANE LOADING

DOORS FIX INTO
PLACE WHEN
FOLDED BACK

42-INCH SCREEN

LED LIGHT
FITTED AS
STANDARD

POCKETS ON
DOORS FOR
SMALLER
COMPONENTS

2X ADDITIONAL SOCKETS
FOR POWER ACCESS

4X KEYED ALIKE
5-LEVER DEADLOCKS

FULL-WIDTH SHELVES
IN LOWER AND UPPER
COMPARTMENTS

TWO IEC LEAD SOCKETS

FORKLIFT SKIDS
FOR EASY
TRANSPORTATION

HEAVY DUTY
CASTORS FOR EASY
MOBILITY



“I can’t even quantify the time we’ve saved with DataStation, as everything is already set up on the level we need. Invaluable.”

Senior Manager, Mace MEP





OTHER UNIQUE FEATURES INCLUDE

- » 42" BUILT-IN SCREEN
- » ROBUST CONSTRUCTION FOR MAXIMUM PROTECTION
- » ANTI-SWING DOORS



DS2-240



Watch the DataStation™ in action

Product Code	Description	Weight (kg)	External Dimensions W x D x H (mm)	Internal Dimensions W x D x H (mm)
DS2-110	110v mobile DataStation™	230	2231 x 838 x 1981	1123 x 718 x 439
DS2-240	240v mobile DataStation™	230	2231 x 838 x 1981	1123 x 718 x 439

forma-shelta™



A purpose-built shelter, providing a designated, safe area with protection from the elements.



The flat-pack design of the Forma-Shelta™ means it can be constructed where needed in as little as 10 minutes. Coupled with crane lifting eyes and fork pockets for ease of transportation, it is easy to move around site to the best location. The perfect solution for contractors searching for a sturdy, built-to-last unit that encourages users to stay in designated areas only when choosing to smoke/vape.



Watch the
Forma-Shelta™
in action

Individual Panel Weight (kg)	Base (kg)	Roof (kg)	Bench assembly (kg)	Side panel (kg)
FR200-S	112	48	23	14

Product Code	Description	Weight (kg)	External Dimensions W x D x H (mm)	Internal Dimensions W x D x H (mm)
FR200-S	Forma-Shelta™	275	2110 x 2100 x 2070	Bench height: 425

» OPTIONAL EXTRAS

Product Code	Description	Suitable for
FR200-S-AT	Ashtray	Forma-Shelta™

Note: Weights and dimensions are approximate. External dimensions include handles.

“The Mobile TuffBench is the only trolley on the market that could handle the weight and was the right size”

Instron

“Armorgard products are the best in the business. We’ve used them as a family for years”

Director, BPM Electrical Services

“Armorgard products consistently outperform others on the market.”

Operations Director, Radii



“Our city stores are very compact, however, SiteStation provides the perfect solution to storing documentations.”

Project Manager, Resolution Interiors Ltd

“Good make and was exactly what we were looking for”

Scotswood Industries



SECTION

04

manual
handling
products



manual handling products

SECTION 04

guide to manual handling	90
safestop™ auto-engaged brake	92
turntable truck™	94
spoolkart™	97
piprack™	98
v-kart™	102
adaptakart™	103
loadall™	106
rubble truck™	114
flexikart™	116
beamkart™	118
t-kart™	119
testimonials	120

guide to manual handling

Preventing musculoskeletal disorders

The term Musculoskeletal Disorder (MSD) covers any injury, damage or disorder of the joints or other tissues in the upper/lower limbs or the back. Workplace Musculoskeletal Disorders (WMSDs) injuries are the most common of workplace compensation claims. Many jobs involve some form of manual handling, but not all manual handling is hazardous or involves the risk of an injury, such as an MSD.



» The facts:

Manual handling relates to the moving of items either by lifting, lowering, carrying, pushing, or pulling. The weight of the item is an important factor, but many other factors can create a risk of injury, for example the number of times you have to pick up or carry an item, the distance you are carrying it, where you are picking it up from or putting it down (picking it up from the floor, putting it on a shelf above shoulder level) and any twisting, bending, stretching or other awkward posture you may adopt while doing a task.

Manual handling injuries are part of a wider group of MSDs. Statistics from the Labour Force Survey (LFS) indicate that MSD cases, including those caused by manual handling, account for more than a third of all work-related illnesses reported each year to enforcing authorities.

There is evidence that, as well as manual handling, heavy manual labour, awkward postures and a recent or existing injury are all risk factors in the development of MSDs. The Manual Handling Operations Regulations 1992 (MHOR) require employers to manage the risks faced by their employees. They must:

- » Reduce the need for hazardous manual handling operations, as far as possible, by redesigning tasks and avoiding the need to move loads, or by automating or mechanising processes.
- » Assess the risk of injury from any hazardous manual handling operations that cannot be avoided.
- » Reduce the risk of injury from those operations. Where possible, provide mechanical assistance e.g. a sack trolley or hoist. Where this is not possible, try to change the task, the load and the working environment.

» The law:

There are several pieces of legislation relating to musculoskeletal disorders that assign responsibilities to both employers and employees.

If you are an employer, your main legal responsibility is to protect the health and safety of your employees and other people who might be affected by what you do. These responsibilities are covered by the Health and Safety at Work Act 1974 (HASAWA). HASAWA allows the government to issue regulations, guidance and Approved Codes of Practice (ACOPs) for employers. These set out detailed responsibilities for employers in every aspect of workplace health and safety, from working safely with computers, to stress, and hazardous chemicals. The Health and Safety Executive (HSE) was set up under HASAWA. The Act contains powers for the HSE to enforce employer duties and penalties for non-compliance.

The following health and safety regulations are particularly relevant to dealing with musculoskeletal disorders in the workplace:

- 1** Management of Health and Safety at Work Regulations 1999 Regulation three requires all employers to assess risks to the health and safety of their employees whilst at work.
- 2** Manual Handling Operations Regulations 1992 (MHOR) MHOR requires an employer to carry out a risk assessment on all manual handling tasks that pose an injury risk. The employer's duty is to prevent the need for manual handling as far as possible if there is a risk of injury. If manual handling cannot be avoided, then they must take steps to reduce the risk of injury as far as possible.
- 3** Control of Vibration at Work Regulations 2005 Regular long-term exposure to whole-body vibration (WBV) is associated with back pain. The Regulations require employers to protect employees from risks of exposure to vibration.
- 4** Provision and Use of Work Equipment Regulations 1998 (PUWER) These Regulations require the assessment, prevention or control of risk from equipment used at work.

- 5** Personal Protective Equipment at Work Regulations 1992 These Regulations fall under the Health and Safety at Work Act 1974 and apply to all workplaces in Britain.

- 6** Lifting Operations and Lifting Equipment Regulations 1998 Under these Regulations, equipment provided for use at work must be:
 - Accompanied by safety measures
 - Suitable for the intended use
 - Used by fully trained people
 - Safe for use
 - Safely maintained and inspected

» What you can do

If you are an employer, you need to identify all hazardous manual handling operations you expect your employees to undertake, and determine if that work is likely to cause an injury by carrying out a risk assessment. You then need to take reasonable steps to control the risks.

**473,000
workers
suffered
musculoskeletal
disorders
in 2023**



A growing range of products designed to make handling materials quick and easy. Products such as the PipeRack™ and LoadAll™ are becoming increasingly popular on construction sites. A selection of the range such as AdaptaKart™, LoadAll™ LA1500-PRO and Turntable Truck™ TT1-PRO features SafeStop™ auto-engaged brake, a unique deadman braking system which puts the user in full control.



from the
desk of R&D

SafeStop™ auto-engaged brake

SafeStop™ auto-engaged brake is the game-changing brake system for our manual handling range. Designed with innovation and safety in mind, this deadman braking system gives you greater control on slopes and stays put while you're loading. Using it couldn't be simpler – the brake is released by operating the trolley with the handle, allowing for seamless movement. Once in position, releasing the handle activates the brake, instantly stopping the trolley. This ensures the safety of the user and those nearby, eliminating potential site injuries. SafeStop™ auto-engaged brake delivers safety and peace of mind, every step of the way.

When we say we've got your back, we mean it.

featured in:

AdaptaKart™ AK750

AdaptaKart™ is the ingenious trolley for large sheet materials, featuring a pivoting rack that holds and rotates boards, making loading and handling safer than ever. Combined with the SafeStop™ auto-engaged brake and robust ratchet straps to secure materials, the AdaptaKart™ is the ultimate solution for safe handling. It minimises the risk of injuries caused by awkward lifting and twisting, keeping workers protected on site.

Turntable Truck™ PRO TT1-PRO

The Turntable Truck™ is designed for precision and ease. Its ergonomic handle stays upright for effortless operation, while the SafeStop™ system ensures safety by halting

the truck instantly when the handle is released. Built with a precision steering mechanism for smooth handling, it's ideal for a range of tasks. Need to manage smaller, looser loads? Add the optional side kit to keep everything securely contained.

LoadAll™ LA1500-PRO

The LoadAll™ LA1500-PRO is the board trolley that boasts a hefty 1500kg maximum payload to help you get more done with fewer trips. Equipped with SafeStop™ auto-engaged brake, it ensures safe handling on slopes and inclines, while the ratchet straps and extendable handle keeps boards securely in place, even during sudden stops. With the LA1500-PRO, you're always in control - built for efficiency, designed for safety.

Stop
risks
in their
tracks



Perfect for areas with slopes and inclined surfaces.



Immediate halt of the trolley means it works with you, not against you.



Guarantees the safety of the user and those around, eliminating potential injuries on site.



safestop

**...the auto-engaged
brake activates as soon
as the handle is released.**

Manual handling remains easy...



1



2

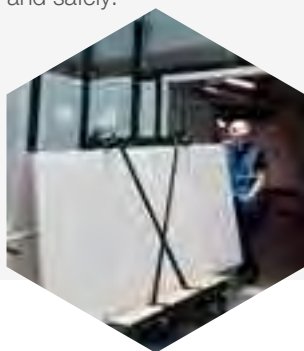


3

The SafeStop™ auto-engaged brake is effortlessly controlled by using the handle, allowing the trolley to move smoothly and safely.

Need to brake suddenly? Just release the handle, and the trolley stops dead in its tracks. It's that simple!

Always secure materials with ratchet straps, and where applicable, extend the handle to match the board size to ensure everything stays firmly in place when the brake is engaged.



armorgard

turntable truck™



TT1



For transporting bulk quantities of material and equipment.

Our Turntable Truck™ has been engineered to take the full strain of transporting bulk quantities of material and equipment when you really need it, reducing the physical impact for workers on construction sites.

- ERGONOMIC HANDLE THAT REMAINS IN UPRIGHT POSITION
- RAISED HEAVY-DUTY DECK FOR GOOD GROUND CLEARANCE AND EASY LOADING
- POWDER-COATED FINISH FOR MAXIMUM DURABILITY
- FITS THROUGH STANDARD DOORWAYS
- PUNCTURE-PROOF SOLID RUBBER WHEELS

»» OPTIONAL EXTRAS



TURNTABLE TRUCK™ SIDE KIT TT1-SK

A SIDE KIT WITH 3 COLLAPSIBLE SIDES TO ENSURE MATERIALS STAY SECURED IN TRANSIT



AUTO-RETRACTABLE RATCHET STRAP RTCH-STP3-50-K

SECURE MATERIALS IN TRANSIT, ENHANCE SAFETY BY PREVENTING FALLING LOADS

armorgard

turntable truck proTM



Taking full strain of transporting bulk quantities with precision steering.

Our brilliant Turntable TruckTM is now even better. By adding a SafeStopTM deadman brake system, we're putting you firmly in control – the brakes are always engaged until you pull the handle, making TT1-PRO even more user friendly and safer to use, especially on slopes. An optional side kit and lashing points mean that if you do brake suddenly, your load will remain secure.



TT1-PRO

ERGONOMIC HANDLE THAT REMAINS IN UPRIGHT POSITION

POWDER-COATED FINISH FOR MAXIMUM DURABILITY



FITS THROUGH STANDARD DOORWAYS

PRECISION STEERING MECHANISM FOR EASY MANOEUVRING

PUNCTURE-PROOF SOLID RUBBER WHEELS

SAFESTOP AUTO-ENGAGED BRAKE (TT1-PRO)

Featuring safestop ...the auto-engaged brake activates as soon as the handle is released.

Product Code	Description	Weight (kg)	External Dimensions W x D x H (mm)	Internal Dimensions W x D x H (mm)	Load Capacity
TT1	Turntable Truck TM	70	1593 x 694 x 1160	1304 x 694 x 469	1 tonne
TT1-PRO	Turntable Truck TM with SafeStop TM	70	1593 x 694 x 1160	1304 x 694 x 469	1 tonne

» **OPTIONAL EXTRAS**

Product Code	Description	Suitable for
RTCH-STP3-50-K	Auto-retractable ratchet strap	TT1
TT1-SK	Side kit	Turntable Truck TM range

Note: Weights and dimensions are approximate. External dimensions include handles.

**“Armorgard’s
product innovation
is impeccable.”**

Director, City Hire





armorgard

spoolkart™



A unique and robust mobile trolley to store, organise and efficiently dispense cable spools.



The SpoolKart™ is a sturdy yet mobile kart for storing, organising and operating with multiple cable spools. A unique solution to keep your equipment accessible. With three easy loading bars, three anti-tangle dispensers and a lockable built-in storage box, the SpoolKart™ can take on a load that no other can.



LOCKABLE STORAGE FACILITY IN THE BACK



BUILT-IN SCREWDRIVER AND TOOL RACK

CAN LOAD UP TO 15 CABLE SPOOLS

THREE ANTI-TANGLE CABLE DISPENSERS SUPPLIED AS STANDARD FOR EASE OF USE

ROBUST 2.5MM STEEL CONSTRUCTION WITH POWDER COATING FOR MAXIMUM DURABILITY

SOLID RUBBER PUNCTURE-PROOF WHEELS FOR EASY TRANSPORTATION ACROSS ALL TERRAINS

CAN TAKE DRUMS OF UP TO 600MM DIAMETER

Product Code	Description	Weight (kg)	External Dimensions W x D x H (mm)	Internal Dimensions W x D x H (mm)
SPK2	SpoolKart™	51	740 x 840 x 1365	560 x 840 x 1080

Note: Weights and dimensions are approximate. External dimensions include handles.





The adaptable mobile on-site storage solution for pipes and other long lengths of material.

The Armorgard PipeRack™ is an innovatively designed wheeled storage rack that keeps your lengths of material organised and off the floor, preventing trip hazards whilst working on site. Each unit has been tested and certified to guarantee a top-quality product that is durable and built to last. The fully collapsible design means that it can be easily transported and stored when not in use. PipeRack™ is available with either a 1-tonne or 2-tonne capacity.





STACKING POSTS
FOR UP TO 6
UNITS HIGH



PR2



TONNE
CERTIFIED
TO CARRY

**“The PipeRack
is brilliant, it has
helped the team
work a lot more
effectively.”**

Managing Director, CSC Group



» OPTIONAL EXTRAS



SAFETY HANDLE PR-SH

HANDLE ALLOWS SAFE
MANIPULATION OF THE PIPERACKS
WHEN THEY ARE LOADED



LINKING KIT PR-LK

FOR LONGER LENGTHS OF
EQUIPMENT, IDEAL FOR JOINING
TWO PIPERACKS TOGETHER



2 TONNE UPGRADE KIT PR-UK

MAKING THE PR1 SUITABLE
FOR STORING UP TO 2
TONNE IN CAPACITY



AUTO-RETRACTABLE RATCHET STRAP RTCH-STP3-50-K

SECURE MATERIALS IN
TRANSIT, ENHANCE SAFETY BY
PREVENTING FALLING LOADS



LINKING KIT

Product Code	Description	Weight (kg)	External Dimensions W x D x H (mm)	Folded Dimensions W x D x H (mm)	Load Capacity
PR1	1 tonne PipeRack™	83	1010 x 1560 x 1570	1010 x 1560 x 560	1 Tonne
PR2	2 tonne PipeRack™	101	1010 x 1560 x 1570	1010 x 1560 x 560	2 Tonne

» OPTIONAL EXTRAS

Product Code	Description	Suitable for
PR-SH	Safety handle	PipeRack™ range
PR-LK	Linking kit	PipeRack™ range
PR-UK	2 tonne upgrade kit	PR1
RTCH-STP3-50-K	Auto-retractable ratchet strap	PipeRack™ range

Note: Weights and dimensions are approximate. External dimensions include handles.



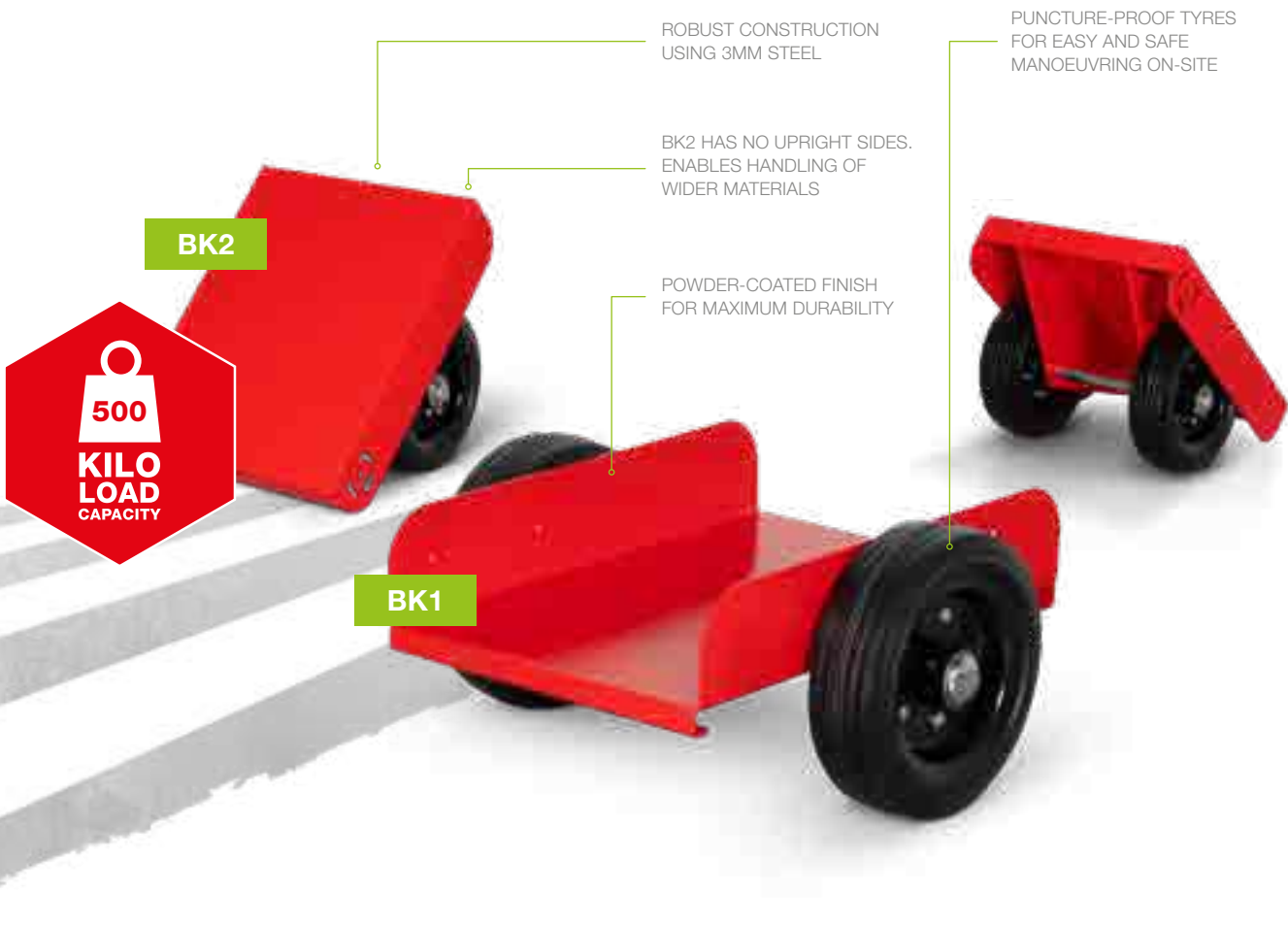
beamkart™



Designed to be a heavy-duty kart, ideal for handling long lengths of material.



The BeamKart™ is designed for the effortless transportation of beams and steels. Robust enough for life on-site, yet nimble enough to quickly become an essential for the everyday movement of heavy and bulky items. The BeamKart™ boasts puncture-proof solid rubber tyres, is available in two sizes and is finished to the standards you've come to expect from Armorgard.



Product Code	Description	Weight (kg)	External Dimensions W x D x H (mm)	Internal Dimensions W x D x H (mm)	Load Capacity
BK1	BeamKart™ with sides	21	550 x 515 x 250	345 mm between lugs	500 kg
BK2	BeamKart™	24	400 x 505 x 265	N/A	500 kg

armorgard

adaptakart™



Board trolley with a pivoting rack to take the strain out of loading, lifting and transporting large sheet materials.

AdaptaKart™ is our ingenious new trolley for large sheet materials, featuring a pivoting rack to hold and rotate boards through 75° – making them safer and less awkward to slide/load. In the horizontal position you've even got a handy workbench! Our SafeStop™ auto-engaged brake provides greater control on slopes and it won't budge while loading, while a 750kg load capacity and forklift pockets makes light work of heavier/larger loads.



Featuring **safestop**

...the auto-engaged brake activates as soon as the handle is released.

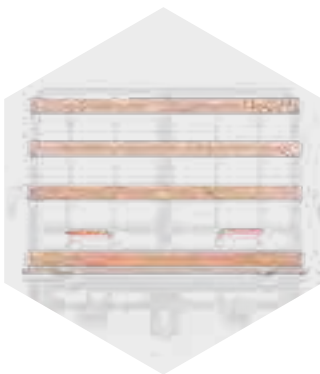
“The AdaptaKart is a game-changer for managing plasterboard, offering the unique ability to hold and flip several boards”

Lindner Interiors





»» OPTIONAL EXTRAS



WOODEN BOARD KIT
AK750-WBK

THE WOODEN SLATS ACT AS A SACRIFICIAL LAYER WHEN CUTTING MATERIALS IN THE ADAPTAKART'S HORIZONTAL POSITION AND PREVENTS DAMAGE TO THE UNIT

PIVOTING
RACK TO
HOLD AND
ROTATE
BOARDS

NARROW ENOUGH
TO FIT THROUGH
DOORWAYS

EXTENDABLE
HANDLES



Product Code	Description	Weight (kg)	External Dimensions W x D x H (mm)	Internal Dimensions W x D x H (mm)	Load Capacity
AK750	AdaptaKart™ board trolley with pivoting frame	123	3238 x 1250 x 1161	1987 x 750 x 1563	750kg

»» OPTIONAL EXTRAS

Product Code	Description	Suitable for
AK750-WBK	Wooden board kit	AdaptaKart™

Note: Weights and dimensions are approximate. External dimensions include handles.



loadall™ LA750-PRO



The ergonomic trolley with unique clamping system for transporting large sheets of material.

Save space, ease manual handling and protect your materials with the LoadAll™ LA750-PRO. The combination of the H-frame design and innovative clamping system with the swivel wheels and telescopic handle make the LA750-PRO easy to manoeuvre when carrying a full load of sheet materials through doorways and around corners.





OTHER UNIQUE FEATURES INCLUDE

- » H-FRAME DESIGN FOR STABILITY
- » UNIQUE CLAMPING SYSTEM TO SECURE MATERIALS IN TRANSIT
- » HANDLE CAN BE REVERSED TO ACCOMMODATE FOR SHORTER MATERIALS

» OPTIONAL EXTRAS



**SIGN KIT
LA750-SK**

FOR GUIDANCE ON
RECOMMENDED LOAD
QUANTITIES WITH SPACE
FOR SITE SPECIFIC LOAD
GUIDES FEATURING
COMMON BOARD TYPES



LA750-PRO

Product Code	Description	Weight (kg)	External Dimensions W x D x H (mm)	Load Capacity
LA750-PRO	750 kg LoadAll™ with clamp	66	1563 x 598 x 1345	750 kg

» OPTIONAL EXTRAS

Product Code	Description	Suitable for
LA750-SK	Sign kit	LA750-PRO

**“The LA750-PRO
noticeably helped
productivity on site”**

Director, SJP Contracts Ltd

armorgard

loadall™ LA750



The ergonomic trolley ideal for tight spaces.

Save space, make handling easier and protect your materials from damage using LoadAll™ LA750. When on-site, transporting large sheets of board has never been easier. Specially designed for storing and transporting plasterboard and other large sheet materials.



LA750



SIDE-LOADING FACILITY
WITH EASY-GRAB HANDLES

ROBUST CONSTRUCTION
USING 3 MM STEEL

H-FRAME DESIGN FOR
EASE OF TRANSPORTING
THROUGH DOORWAYS
AND NARROW SPACES

HEAVY-DUTY CASTORS
SUPPLIED AS STANDARD
- ALL SWIVEL WHEELS
(TWO BRAKED)

EASILY FOLDABLE FOR
STORAGE

Product Code	Description	Weight (kg)	External Dimensions W x D x H (mm)	Folded Dimensions W x D x H (mm)	Load Capacity
LA750	750kg LoadAll™	42	1320 x 549 x 1195	1320 x 549 x 426	750kg

» OPTIONAL EXTRAS

Product Code	Description	Suitable for
RTCH-STP3-50-K	Auto-retractable ratchet strap	LA750
LA-PRO	PRO kit with clamping system	LA750

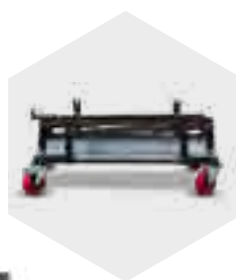


loadall™ LA1000



The unique space-saving trolley for transporting large sheets of board.

LoadAll™ LA1000 is the only trolley of its kind on the UK market that can be folded and stacked when not in use. It also has no detachable parts! Its A-frame design allows it to be loaded on both sides maximising its space-saving efficiencies.



IDEAL FOR STORAGE
WHEN NOT IN USE

CENTRE A-FRAME DESIGN
MEANS THAT WHEN
LOADED, ALL WEIGHT IS
LEANING INTO THE CENTRE

CARRIES UP TO 24 SHEETS
OF PLASTERBOARD
- APPROXIMATELY 60%
MORE THAN ALTERNATIVE
PRODUCTS

PROVISION FOR
STRAPPING BOARDS IN
PLACE - IMPROVING
SAFETY WHEN ON-SITE

COMPLETE WITH SAFE
WORKING LOAD PLATES,
CERTIFYING A CAPACITY
OF UP TO 1 TONNE

NO DETACHABLE PARTS
- NOTHING GETS LOST

HEAVY-DUTY CASTORS
FOR EASY MOBILITY

LA1000



**1
TONNE
CERTIFIED
TO CARRY**



Product Code	Description	Weight (kg)	External Dimensions W x D x H (mm)	Internal Dimensions (folded) W x D x H (mm)	Load Capacity
LA1000	1 Tonne LoadAll™	55	750 x 1250 x 1440	750 x 1250 x 505	1 Tonne

armorgard

loadall™ LA1500-PRO



The ergonomic trolley with unique clamping system for transporting large sheets of material.



LoadAll™ LA1500-PRO can carry sheets up to three metres long and with a hefty 1500kg maximum payload, means fewer trips and more efficiency. Designed for optimum safety, six castors provide stability and manoeuvrability with a 360° turning circle. Built-in ratchet straps ensure a secure load and our SafeStop™ deadman braking system enables greater control on slopes. Crane lifting eyes and forklift pockets are also included.



LA1500-PRO

BUILT-IN RATCHET STRAP
ALLOWING THE USER TO
SAFELY SECURE AND
TRANSPORT THE LOAD

ROBUST POWDER COAT

HANDLE EXTENDS TO
ALLOWING YOU TO CARRY
UP TO 3M SHEETS WHILST
STILL GIVING TO ACCESS
TO THE HANDLE SIMPLY

FORKLIFT SKIDS FOR EASY
TRANSPORTATION

SWIVEL CASTORS
PROVIDE STABILITY AND
MANOEUVRABILITY



Featuring **safestop** ...the auto-engaged brake activates as soon as the handle is released.

“Armorgard products have significantly improved our transport of heavy materials, offering unmatched durability and long life.”

Operations Director, Radian





LA1500-PRO



Product Code	Description	Weight (kg)	External Dimensions W x D x H (mm)	Internal Dimensions W x D x H (mm)	Load Capacity
LA1500-PRO	1.5 Tonne LoadAll™ with SafeStop™	155	3265 x 754 x 1707	1490 x 182 x 1211	1.5 Tonne

Note: Weights and dimensions are approximate. External dimensions include handles.



rubble truck™



Our multi-purpose Rubble Truck™ features an in-built tipping feature, ideal for handling waste and rubble.

Ergonomically designed for maximum performance and efficiency, the Rubble Truck™ has an array of unique features to create an indispensable on-site companion. Our multi-purpose Rubble Truck™ features a huge 400-litre capacity scoop, extra strong crane lifting eyes, and solid rubber wheels. When the day's over, the unique stackable design means you can maintain a working space that's safe and clutter-free.





OTHER UNIQUE FEATURES INCLUDE

- » IDEAL FOR HANDLING MATERIALS, WASTE OR RUBBLE
- » ROBUST CONSTRUCTION ENGINEERED FOR HEAVY USE
- » SOLID RUBBER PUNCTURE PROOF WHEELS



» OPTIONAL EXTRAS



**RUBBLE TRUCK LID
RT-L**

INCREASES THE LOAD CAPACITY
AND ALSO PREVENTS THE
CONTENTS FROM ESCAPING



UNIQUE
STACKABLE
DESIGN UP TO
6 UNITS HIGH

Product Code	Description	Weight (kg)	External Dimensions W x D x H (mm)	Internal Dimensions W x D x H (mm)	Load Capacity
RT400	Rubble Truck™	89	758 x 1460 x 951	675 x 1328 x 658	750 kg

» OPTIONAL EXTRAS

Product Code	Description	Suitable for
RT-L	Lid	Rubble Truck™

Note: Weights and dimensions are approximate. External dimensions include handles.



flexikart™



A multi-purpose, space-saving, stackable, sturdy and ergonomically friendly unit.

Mobilise your materials with the Flexikart™, a safe, multi-purpose folding pallet skate. With a 750kg load capacity, this super-neat and sturdy trolley is ideal for storing materials off the ground and moving them around on-site, even through narrow corridors and doorways.

WITH THE SUPPORT ARMS FOLDED DOWN, THE FLEXIKART CAN ACCOMMODATE LARGER LOADS, OR CAN BE TWINNED WITH A SECOND FLEXIKART™ FOR LONG LOADS SUCH AS METAL BEAMS, WOOD, PIPE, CONDUIT AND OTHER MATERIALS

ALL 4 SUPPORT ARMS CAN BE RAISED INDIVIDUALLY AS REQUIRED, AND WHEN NOT IN USE, THEY FOLD BELOW THE BED HEIGHT

FK2-PRO

BUILT-IN LASHING POINTS ALLOW LOADS TO BE SECURED, WHICH SAFELY PREVENTS THEM FALLING OFF WHEN MANOEUVRING



A ROBUST PALLET SKATE WHICH INCREASES SAFETY AND REDUCES PHYSICAL STRAIN WHEN MANOEUVRING LOADS MANUALLY



»» OPTIONAL EXTRAS



**AUTO-RETRACTABLE
RATCHET STRAP
RTCH-STP3-50-K**

SECURE MATERIALS IN
TRANSIT, ENHANCE SAFETY BY
PREVENTING FALLING LOADS



FK2-PRO

FOUR SWIVEL CASTORS (TWO BRAKED)
FOR EASY MANOEUVRABILITY



FK2

ALL FOUR ARMS
CAN FOLD DOWN

Product Code	Description	Weight (kg)	External Dimensions W x D x H (mm)	Internal Dimensions W x D x H (mm)	Load Capacity
FK2	FlexiKart™	62	1257 x 743 x 884	1136 x 634 x 389	750kg
FK2-PRO	2 tonne FlexiKart™	70	1257 x 812 x 884	1136 x 634 x 389	2000kg

»» OPTIONAL EXTRAS

Product Code	Description	Suitable for
RTCH-STP3-50-K	Auto-retractable ratchet strap	FK2

 **armorgard**

v-kart™



A heavy-duty cart used for handling long lengths of round material.

Designed to make life easier for those manoeuvring pipe, steel sections and other round lengths of material on construction sites.



VK2

POWDER-COATED FOR
MAXIMUM DURABILITY

PROTECTIVE
RUBBER BUFFERS
FOR MATERIALS

PUNCTURE
PROOF RUBBER
WHEELS

ADJUSTABLE, REMOVABLE,
STURDY HANDLE HELPS
TO REDUCE BACK STRAIN
DURING USE. CAN BE
FITTED TO THE LEFT OR
RIGHT SIDE OF THE UNIT

»» OPTIONAL EXTRAS



**AUTO-RETRACTABLE
RATCHET STRAP
RTCH-STP3-50-K**

SECURE MATERIALS IN
TRANSIT, ENHANCE SAFETY BY
PREVENTING FALLING LOADS

Product Code	Description	Weight (kg)	External Dimensions W x D x H (mm)	Internal Dimensions W x D x H (mm)
VK2	V-Kart™	35	835 x 1233 x 900	385 (diameter)

»» OPTIONAL EXTRAS

Product Code	Description	Suitable for
RTCH-STP3-50-K	Auto-retractable ratchet strap	VK2



armorgard

t-kart™



Safely reduce the manpower required for moving transformers and increase efficiency on site.

Designed and certified to carry transformers, you can now safely reduce manpower and increase efficiency. Save time and money and ensure user safety is always front of mind. Despite its efficient, lightweight design, the T-Kart™ has a rugged 3mm steel construction and solid rubber puncture-proof wheels with no detachable parts to ensure the product really is built to last.



Watch the
T-Kart™
in action

Product Code	Description	Weight (kg)	External Dimensions W x D x H (mm)	Load Capacity
TK1	T-Kart™	32	555 x 400 x 1200	200 kg

**“Only the best for
His Majesty’s
Royal Air Force”**

RAF

**“Using the FlexiKart
means we don’t need
to use a side loader,
which reduces risk of
injury to my staff.”**

Director, Jackson Timber



**“We wish we got
the AdaptaKart a
long time ago! It’s
saved us loads of
time and hassle.”**

Director, TaylorMade by Stanton





“The SpoolKart has upped productivity and has helped prevent health and safety issues. Ticks all the boxes.”

Managing Director, DRB Electrical



SECTION

05

hazardous goods storage



hazardous goods storage

SECTION 05

guide to storing hazardous substances	124
flambank™	126
flamstor cabinet™	130
transbank™	132
transbank chem™	134
chembank™	136
chemcube cabinet™	137
safestor™	138
forma-stor COSHH™	140
tuffcage™	144
drumcage™	145
gorilla gas cage™	146
drumbank™	148
testimonials	152

guide to storing hazardous substances

If you are storing fuels or chemicals, there are laws that you have to comply with. By applying the following five 'VICES' principles you will be well on the way to making sure that you are working safely with flammable substances and chemicals. We stock a unique range of flammable and chemical storage products to ensure that you can be compliant.

When choosing the secondary storage for any hazardous substance, you must first seek information from that substance's MSDS, section 7 and section 10



- » **Ventilation:** is there plenty of fresh air where flammable substances are being stored and used?
- » **Ignition:** have all the obvious ignition sources been removed from the storage and handling areas?
- » **Containment:** are your flammable substances kept in suitable containers?
- » **Exchange:** can you exchange a flammable substance for a less flammable substance?
- » **Separation:** are flammable substances stored and used well away from other process and storage areas?

Flammable liquids can give off large volumes of flammable vapours at room temperature. These vapours, when mixed with air, can ignite, often violently. Spilt flammable liquids can, if not contained, flow a long way to an ignition source and then flashback to the source of the leak. Spills on clothing can represent a serious risk of injury if ignited.

» To help control these risks:

- 1 Store flammable liquids in a separate storage area or in a purpose-made bin or cupboard.
- 2 Dispense and use them in a safe place with good ventilation and no ignition source.
- 3 Keep containers closed when not in use.
- 4 Always dispense liquids over a tray and keep a non-flammable spill kit to hand.
- 5 Dispose of contaminated materials safely or call in disposal experts.
- 6 Always keep an adequate number of fire extinguishers to hand.

All storage cabinets must be designed to retain spills (110% volume of the largest vessel normally stored in it or 25% of the total amount stored, whichever is the greater). All flammable liquids must be stored in closed containers and kept in a store that is manufactured from materials that will resist fire for 30 minutes.

» Storing pesticides and other chemicals

Location – position your store well away from areas that present a risk of fire.

Organising – mark the exterior of the store with general chemical danger warning signs.

Construction – provide a store that is resistant to fire for 30 minutes, capable of retaining leakage/spillage adequately ventilated and secure against unauthorised access.

Transporting pesticides and other chemicals

Pesticides or other chemicals should never be kept in a vehicle for long periods of time – maximum time would be a 24 hour period. Never carry pesticides or other chemicals in the cab of tractors or any other vehicles. Use a vehicle with a floor to ceiling bulkhead, if possible, between the driver/passenger compartment and the load compartment.

All chemicals must be strapped or secure somehow during transit. It is highly recommended to fit secure containers/cabinets to the vehicle, either inside or securely mounted to the outside or on a trailer. Chemical safes must be sturdy, lockable and fixed down to the vehicle. Ventilation is not necessary.

Pesticides must always be secure against unauthorised access when away from your fixed store. Park your mobile store away from any location where water pollution could occur. Try to work within sight of your mobile store, especially in public areas. Always ensure the cabinet or vehicle is locked.

The driver must have access in the vehicle to PPE, spillage kit, first aid (including eyewash), and also spare impermeable sealable containers in which to place split containers and any other contaminated material.

» Transporting fuel and other flammable substances

The purpose of the regulations dealing with the carriage of dangerous goods is to protect everyone either directly involved or who might become involved, such as members of the emergency services or public. Regulations place duties on everyone involved in the carriage of dangerous goods to

ensure that they know what they have to do to minimise the risk of incidents and guarantee an effective response. Regulations regarding purchasing, transporting and storing fuel are becoming much more stringent. The following guidelines are for businesses transporting flammables.

» Filling up containers at petrol stations

All petrol stations are under licence to supply fuel, very similar to alcohol licence. If they are caught breaching these licences, they could lose their right to supply fuel. By law, the only type of can which can be filled up is one approved to UN1203.

Most petrol stations have restrictions that prevent more than two cans from being filled in one visit. Typical containers purchased from car accessory shops may not be approved.

» Transporting fuel in approved containers

Ensure that you do not carry over the maximum allowed by law without having an ADR licence. This is 333 litres, but HSE will always look at the amount you should have ‘reasonably been carrying’ if you are involved in an accident. A typical case of transporting fuel would be with 2 or 3 jerry cans. Providing those cans are UN approved, marked UN1203 and labelled with the flammable diamond, the requirements by law are: Driver training in accordance with ADR1.3.

Carry 2 kg fire extinguisher. Stow the jerry cans securely to avoid damage or loss from the vehicle.

The HSE class vans as ‘workplaces’ during the working day. If a vehicle is involved in an accident, not only do the above regulations come into force but also The Health and Safety at Work Act. This involves safe storage of the fuel cans and requires that they are stored in secure lockable vented containers.

There is also the risk of spillage of goods, which could lead to fire, explosion or environmental damage. It is highly recommended that an absorbent spill kit is kept onboard every vehicle carrying any form of dangerous liquids. Fire extinguishers are the subject of conditions from HSE also. They must be easily accessible to the vehicle crew and protected against the effects of the weather.

» How Armorgard calculate the sump capacity

The sump capacity on all Armorgard products is calculated by the maximum amount of liquid that can be contained within the liquid-tight space in the base of a unit.



Disclaimer The storage of chemicals, flammable substances and gases is the subject of many regulations. Some substances must be stored outside away from buildings. Others can be stored inside but are sometimes subjected to quantity limits. We would always recommend that you should seek the advice of the Health and Safety Inspectorate, your local fire officer, Trading Standards Office or any other qualified body. Armorgard is not an advisor as to where goods shall be stored and can take no liability for any storage situation. All information can be found at www.hse.gov.uk or by calling HSE's information line.



flambank™

**COSHH
COMPLIANT**
**30
MIN
RESISTANCE**

The ultra-tough, lockable vault for storing hazardous chemicals and flammables.

Built to the high standards that Armorgard is known for, the Armorgard FlamBank™ is specially designed to comply with all COSHH regulations, ensuring that your hazardous substances are securely protected 24/7. Available in 7 sizes, the FlamBank™ is ideal for use on construction sites, in factories and in vehicles.

KEYED ALIKE 5-LEVER
DEADLOCKS BOTH SIDES
WITH HEAVY-DUTY KEYS

MULTIPLE VENTILATION
POINTS TO PREVENT
BUILD-UP OF FUMES

FB2

FINISHED IN BRIGHT RED
WITH RELEVANT HAZARD
WARNING SIGNS FITTED
AS STANDARD

STRONG GAS STRUTS AND
SAFETY CATCH FITTED AS
STANDARD - CONFORMS
TO INDUSTRY STANDARDS

ROBUST STEEL PLATE
CONSTRUCTION AND
POWDER-COATED
FOR MAXIMUM DURABILITY

FULLY WELDED AND
TESTED SUMP BASE
TO PREVENT LEAKAGE

FORKLIFT SKIDS FOR
EASY TRANSPORTATION
BY FORKLIFT

Compliant with COSHH regulations, Health and Safety Executive's HSG51 and DSEAR standards, as well as GHS labelling requirements.



FB1



FB21



FBC4



FBC5

**“The Armorgard
FlamBank enables
us to fully comply
with health and
safety requirements”**

DFI Rivers





Product Code	Description	Weight (kg)	External Dimensions W x D x H (mm)	Internal Dimensions W x D x H (mm)	Sump Capacity
FB1	Van Box	46	995 x 540 x 485	840 x 400 x 470	64
FB21	Site Box 2 x 2 x 2	64	780 x 630 x 675	625 x 605 x 575	42
FB2	Site Box 4 x 2 x 2	82	1295 x 630 x 675	1140 x 610 x 575	85
FBC2	Site Chest	107	780 x 630 x 1280	625 x 575 x 1185	46
FBC4	Site Chest 4 x 4 x 2	153	1280 x 630 x 1280	1130 x 550 x 1185	85
FBC5	Site Chest 5 x 4 x 2	174	1600 x 630 x 1280	1450 x 550 x 1185	138
FBC8	Site Chest	334	2375 x 985 x 1230	2285 x 895 x 1125	310

» OPTIONAL EXTRAS

Product Code	Description	Suitable for
CASS1	6" Heavy-duty castor kit	FB21, FB2, FBC2, FBC4, FBC5
SHE-CH2	Shelf	FBC2
SHE-CH4	Shelf	FBC4, FBC8
SHE-CH5	Shelf	FBC5

Note: Weights and dimensions are approximate. External dimensions include handles.



flamstor cabinet™

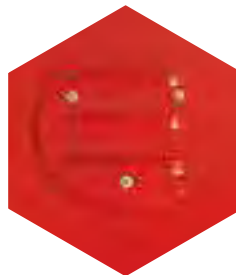
**COSHH
COMPLIANT**

**30
MIN
RESISTANCE**



The secure storage cabinet that keeps your hazardous substances safe, organised and accessible.

The FlamStor Cabinet™ is a COSHH compliant secure storage solution designed to keep hazardous substances safe, organised, and easily accessible. Built with specially designed flameproof vents to prevent the build-up of fumes, the units ensures maximum safety and security.



HIGH & LOW-LEVEL VENTILATION TO PREVENT BUILD-UP OF FUMES

FSC3



POWDER-COATED FOR MAXIMUM DURABILITY

FLAME ARRESTER GAUZE FITTED ON ALL VENTILATION

HINGED DOORS AND 5-LEVER DEADLOCKS

FINISHED IN BRIGHT RED WITH RELEVANT HAZARD WARNING SIGNS FITTED AS STANDARD

FULLY ADJUSTABLE SHELVES ON FSC1, FSC2, FSC3

BOTTLES OF 25L EACH PRODUCT CAN HOLD
FSC1 – 1X 25L
FSC2 – 3X 25L
FSC3 – 8X 25L
FSC4 – 16X 25L
FSC5 – 36X 25L

FORKLIFT SKIDS FOR EASY TRANSPORTATION

FULLY WELDED AND TESTED SUMP BASE TO PREVENT LEAKAGE



Compliant with COSHH regulations, Health and Safety Executive's HSG51 and DSEAR standards, as well as GHS labelling requirements.



Product Code	Description	Weight (kg)	External Dimensions W x D x H (mm)	Internal Dimensions W x D x H (mm)	Sump Capacity
FSC1	FlamStor Cabinet™	45	505 x 540 x 980	410 x 455 x 715	24
FSC2	FlamStor Cabinet™	74	800 x 585 x 1260	710 x 505 x 885	88
FSC3	FlamStor Cabinet™	111	1205 x 585 x 1560	525 x 510 x 1185 (per section)	130
FSC4	FlamStor Cabinet™	170	1355 x 780 x 1560	1290 x 705 x 575 (per section)	190
FSC5	FlamStor Cabinet™	389	2300 x 760 x 2251	2222 x 580 x 620 (per section)	270

» **OPTIONAL EXTRAS**

Product Code	Description	Suitable for
SHE-C1	Shelf	FSC1
SHE-C2	Shelf	FSC2
SHE-C3	Shelf	FSC3

Note: Weights and dimensions are approximate. External dimensions include handles.




transbank™



The cost-effective secure container for storing and transporting hazardous fuels and chemicals.

COSHH regulations require that when fuels and chemicals are being transported, the load needs to be stored and secured onto the vehicle. The Armorgard TransBank™ is purpose-built for exactly that, while protecting them from theft, fire and leakage. Constructed from heavy-duty steel, this high-quality, secure container accommodates standard jerry fuel cans.

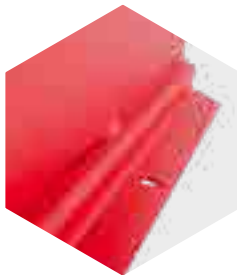


**COSHH
COMPLIANT**



**30
MIN
RESISTANCE**

Compliant with COSHH regulations, Health and Safety Executive's HSG51 and DSEAR standards, as well as GHS labelling requirements.



FLAME ARRESTER GAUZE
FITTED ON ALL BOXES

TRB6

FINISHED IN BRIGHT RED
WITH RELEVANT HAZARD
WARNING SIGNS FITTED
AS STANDARD

POWDER-COATED FOR
MAXIMUM DURABILITY

LID STAY

OVER-CENTRE LATCH
WITH PADLOCK FACILITY

ROBUST STEEL PLATE
CONSTRUCTION FOR
MAXIMUM PROTECTION

FULLY WELDED AND
TESTED SUMP BASE TO
PREVENT LEAKAGE

INTEGRAL FIXING
POINTS ALLOW VAULTS
TO BE SECURED TO THE
FLOOR OR VEHICLE



TRB1



TRB2



TRB3



TRB4



Product Code	Description	Weight (kg)	External Dimensions W x D x H (mm)	Internal Dimensions W x D x H (mm)	Sump Capacity (L)
TRB1	TransBank™	13	435 x 400 x 375	320 x 315 x 335	15
TRB2	TransBank™	20	530 x 480 x 545	420 x 390 x 505	28
TRB3	TransBank™	24	745 x 480 x 545	635 x 390 x 505	40
TRB4	TransBank™	28	880 x 480 x 545	770 x 390 x 505	50
TRB6	TransBank™	38	1280 x 480 x 545	1170 x 390 x 505	75

Note: Weights and dimensions are approximate. External dimensions include handles.



transbank chemTM




Compliant with COSHH regulations, Health and Safety Executive's HSG51 and DSEAR standards, as well as GHS labelling requirements.



The safe vault for storage and transportation of smaller volumes of chemicals.

COSHH regulations require that anyone using chemicals must transport them safely in a lockable container. The TransBank ChemTM has been specially designed to comply with all legislation regarding the storage of chemicals, both in vehicles and in fixed locations. To maximise internal space, vaults are built to accommodate a range of standard sized chemical cans.

TRB4C

SPECIALLY DESIGNED FOR CHEMICAL STORAGE

POWDER-COATED FOR MAXIMUM DURABILITY

FINISHED IN BRIGHT YELLOW WITH RELEVANT HAZARD WARNING SIGNS

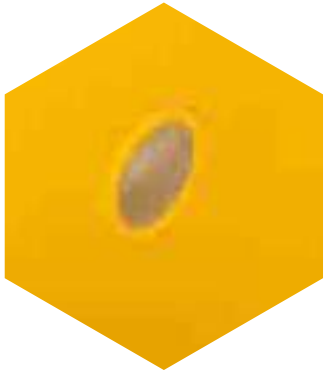
LID STAY

VENTILATION TO PREVENT BUILD-UP OF FUMES

OVER-CENTRE LATCH WITH PADLOCK FACILITY

INTEGRAL FIXING POINTS ALLOW VAULTS TO BE SECURED TO THE FLOOR OR VEHICLE

FULLY WELDED AND TESTED SUMP BASE TO PREVENT LEAKAGE



TRB1C



TRB4C



TRB2C



375mm



TRB1C

545mm

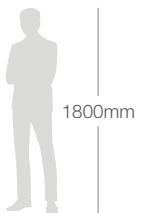


TRB2C

545mm

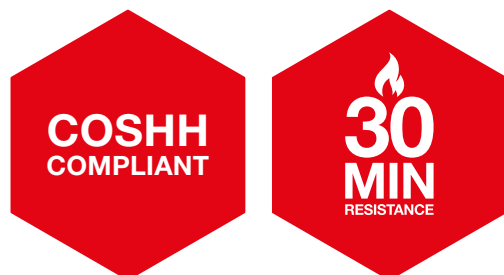


TRB4C



Product Code	Description	Weight (kg)	External Dimensions W x D x H (mm)	Internal Dimensions W x D x H (mm)	Sump Capacity
TRB1C	TransBank Chem™	13	435 x 400 x 375	320 x 315 x 335	15
TRB2C	TransBank Chem™	20	530 x 480 x 545	420 x 390 x 505	28
TRB4C	TransBank Chem™	28	880 x 480 x 545	770 x 390 x 505	50

Note: Weights and dimensions are approximate. External dimensions include handles.

armorgard**chembank™**

The high security lockable vault for the safe storage of chemicals.

Purpose-built for the safe storage of chemical substances, the ChemBank™ conforms to all relevant COSHH requirements. The tough welded construction delivers maximum protection from thieves and the elements, while its distinctive bright yellow colour and signage make it easy to distinguish between fuel and chemical stores – a particular benefit for sites with multi-national workforces.

Compliant with COSHH regulations, Health and Safety Executive's HSG51 and DSEAR standards, as well as GHS labelling requirements.



POWDER-COATED FOR MAXIMUM DURABILITY. CONSTRUCTED USING 2 & 3 MM STEEL

CBC4 MODEL SUPPLIED WITH 1 INTERNAL SHELF

ROBUST AND SECURE KEYED ALIKE 5-LEVER DEADLOCKS

STRONG GAS STRUTS AND SAFETY CATCH FITTED AS STANDARD

HIGH & LOW-LEVEL VENTILATION TO PREVENT BUILD-UP OF FUMES

FINISHED IN BRIGHT YELLOW WITH RELEVANT HAZARD WARNING SIGNS

FORKLIFT SKIDS TO ALLOW FOR EASY TRANSPORTATION VIA FORKLIFT

FULLY WELDED, BUNDED BASE

Product Code	Description	Weight (kg)	External Dimensions W x D x H (mm)	Internal Dimensions W x D x H (mm)	Sump Capacity (L)
CB2	ChemBank™ 4 x 2 x 2	86	1300 x 675 x 670	1135 x 550 x 575	85
CBC4	ChemBank™ 4 x 4 x 2	150	1285 x 670 x 1275	1130 x 570 x 1185	85

» OPTIONAL EXTRAS

Product Code	Description	Suitable for
CASS1	6" castor kit	ChemBank™ range

 **armorgard**

chemcube cabinet™



The leak-proof, lockable cabinet that keeps your chemicals safe and accessible.

Available in three sizes, the Armorgard ChemCube Cabinet™ is purpose-built to keep your chemicals safe and accessible. Designed using durable UV resistant plastic, the unit is often used in situations where a substance would react with metal. For extra convenience, the smallest size is also wall-mountable.



920mm



CCC1

1315mm



CCC2

1320mm



CCC3

1800mm



Product Code	Description	Weight (kg)	External Dimensions W x D x H (mm)	Internal Dimensions W x D x H (mm)	Sump Capacity (L)
CCC1	ChemCube Cabinet™	15	580 x 435 x 920	465 x 390 x 740	16
CCC2	ChemCube Cabinet™	27	690 x 550 x 1315	475 x 440 x 990	60
CCC3	ChemCube Cabinet™	47	1240 x 555 x 1320	1005 x 450 x 1000	125

Note: Weights and dimensions are approximate. External dimensions include handles.

armorgard

safestor™

COSHH
COMPLIANT

Compliant with COSHH regulations, Health and Safety Executive's HSG51 and DSEAR standards, as well as GHS labelling requirements.

The most robust COSHH cabinet on the market for storage of hazardous substances.

The SafeStor™ is purpose-built for the indoor safe storage of flammables and chemicals, including paint and other hazardous substances. Fully compliant with all legislation relating to the Control of Substances Hazardous to Health (COSHH), this range of cabinets features a liquid-tight sump to contain spillages, as well as galvanised shelves for maximum durability.

HFC6

MEETS RELEVANT
REGULATION FOR
STORING FUEL OR
CHEMICALS

100KG UDL ADJUSTABLE
GALVANISED SHELVES
WHICH WON'T CORRODE
WITH THE SUBSTANCES
BEING STORED ON IT

WELDED HINGES FOR
MAXIMUM LIFESPAN

POWDER-COATED FINISH
- COMPLETE WITH
RELEVANT WARNING SIGNS

FLUSH-FIT, ANTI-SNAG
HANDLE WITH KEY
OPERATED LOCK AND
COLOUR CODED INDICATOR

CONCEALED, 3-POINT
LOCKING MECHANISM WITH
LOCKING BARS AND
REINFORCED RIGID DOORS

LIQUID-TIGHT SUMP
TO CONTAIN SPILLAGES

SOLID PANEL SHELVES
DESIGNED FOR SPILLS TO
DRIP DOWN SIDES INTO
LIQUID TIGHT SUMP, NOT
AFFECTING ANY SUBSTANCES
STORED DIRECTLY BELOW

STRONG, REINFORCED BASE
CONSTRUCTED WITH 1.5MM
CORNER PLATES AND
DOUBLE RETURN FOLDS FOR
EXTRA STRENGTH

ADJUSTABLE FEET ALLOWS
STABILITY ON UNEVEN
SURFACES AND KEEPS UNIT
RAISED OFF OF THE FLOOR



Product Code	Description	Weight (kg)	External Dimensions W x D x H (mm)	Internal Dimensions W x D x H (mm)	Sump Capacity (L)
HFC1	SafeStor™	21	900 x 465 x 700	890 x 390 x 640	27
HFC2	SafeStor™	15	350 x 315 x 700	340 x 240 x 640	6
HFC3	SafeStor™	46	900 x 465 x 900	890 x 390 x 840	27
HFC4	SafeStor™	24	450 x 465 x 900	440 x 390 x 840	13
HFC5	SafeStor™	51	900 x 465 x 1200	890 x 390 x 1140	27
HFC6	SafeStor™	85	1200 x 465 x 1800	1190 x 390 x 1740	36
HFC7	SafeStor™	78	900 x 465 x 1800	890 x 390 x 1740	27
HMC1	SafeStor Mobile™	26	900 x 465 x 810	890 x 390 x 640	27
HMC2	SafeStor Mobile™	33	900 x 465 x 1010	890 x 390 x 840	27

» OPTIONAL EXTRAS

Product Code	Description	Suitable for
HCS1	SafeStor™ Stand	HFC4
HCS2	SafeStor™ Stand	HFC1, HFC3, HFC5
HCS3	SafeStor™ Stand	HFC2

Note: Weights and dimensions are approximate. External dimensions include handles.



forma-stor COSHH™

**COSHH
COMPLIANT**

**30
MIN
RESISTANCE**

**4
SIZES
AVAILABLE**



Our COSHH compliant, storage units for the safe storage of hazardous substances.

Forma-Stor COSHH™ is our innovative solution for on-site secure storage which can be moved easily using built-in forklift pockets or lifting eyes. Galvanised panels fasten neatly together to provide a robust store that can be configured in different sizes, starting from just 1x2m. Several HSE features have been carefully designed to enable contractors to meet COSHH regulations on-site.





Compliant with COSHH regulations, Health and Safety Executive's HSG51 and DSEAR standards, as well as GHS labelling requirements.



FR200-C



FR300-C

CAN BE DELIVERED
PRE-ERECTED AT AN
ADDITIONAL COST



FR400-C

MEETS RELEVANT
LEGISLATION FOR STORING
FUEL AND CHEMICALS

RELEVANT HAZARD
WARNING SIGNAGE

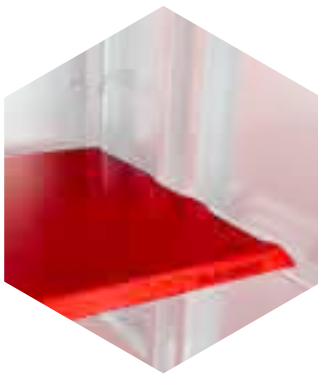
**“Armorgard products
cover all requirements
needed for external
COSHH storage”**

Mediterranean Shipping Company





»» OPTIONAL EXTRAS



SHELF
FRS2

HEAVY-DUTY SHELF ALLOWS YOU TO ORGANISE YOUR MATERIALS AND EQUIPMENT QUICKLY AND EASILY



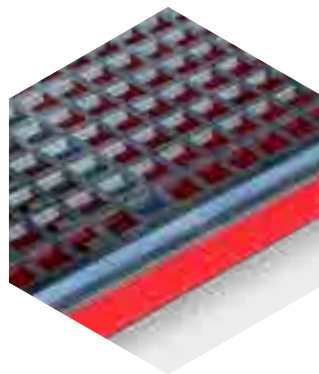
BLOKKABAR SECURITY BAR
FRBL2

ENHANCE SECURITY, BARRING THE DOOR WITH 10MM OF THICK STEEL



RAMPS
FRR7

STRONG PEDESTRIAN RAMPS, ANTI-SLIP STUDDED SURFACE FOR INCREASED SAFETY



2075mm

FR100-C



2075mm

FR200-C



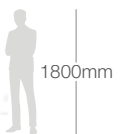
2960mm

FR300-C



3960mm

FR400-C



1800mm

Product Code	Description	Weight (kg)	External Dimensions W x D x H (mm)	Internal Dimensions W x D x H (mm)	Sump Capacity (L)
FR100-C	1m deep Forma-Stor COSHH™	277	2075 x 1000 x 2195	1590 x 845 x 1790	220
FR200-C	2m wide Forma-Stor COSHH™	415	2075 x 2000 x 2195	1850 x 1590 x 1790	440
FR300-C	3m wide Forma-Stor COSHH™	553	2960 x 2075 x 2195	2840 x 1920 x 1790	680
FR400-C	4m wide Forma-Stor COSHH™	663	3960 x 2075 x 2195	3840 x 1920 x 1790	960

»» OPTIONAL EXTRAS

Product Code	Description	Suitable for
FRS2	Shelf	Forma-Stor COSHH™ range
FRBL2	BlokkaBar™ security bar	Forma-Stor COSHH™ range
FRR7	Ramps	Forma-Stor COSHH™ range

Note: Weights and dimensions are approximate. External dimensions include handles.

armorgard

tuffcage™



The one-piece folding security cage for storing your gas cylinders and costly equipment.

The ingeniously designed TuffCage™ is the answer to a wide range of on-site security needs. Constructed from galvanised heavy-duty steel, this robust high-security cage is suitable for storing gas cylinders as well as tools and equipment.

Compliant with COSHH regulations, Health and Safety Executive's HSG51 and DSEAR standards, as well as GHS labelling requirements.

TC1.2



Watch how TuffCage™ is constructed

- SUITABLE FOR SECURING DRUMS AS WELL AS GAS CYLINDERS
- STEEL MESH IS GALVANISED FOR ULTIMATE DURABILITY
- QUICK AND EASY TO ERECT AND DISMANTLE
- RELEVANT HAZARDOUS WARNING SIGNAGE
- THE DOOR IS FITTED WITH A HASP AND STAPLE TO ALLOW THE UNIT TO BE SECURED
- EASILY STACKED WHEN FOLDED DOWN, SAVING ON SPACE
- FORKLIFT SKIDS FOR EASY TRANSPORTATION
- INCREASED SECURITY WITH BASE PANEL

SUITABLE FOR STORING UP TO 9X 47KG GAS BOTTLES

Product Code	Description	Weight (kg)	External Dimensions W x D x H (mm)	Internal Dimensions W x D x H (mm)
TC1.2	TuffCage™	133	1305 x 1240 x 1795	1175 x 1135 x 1725



armorgard

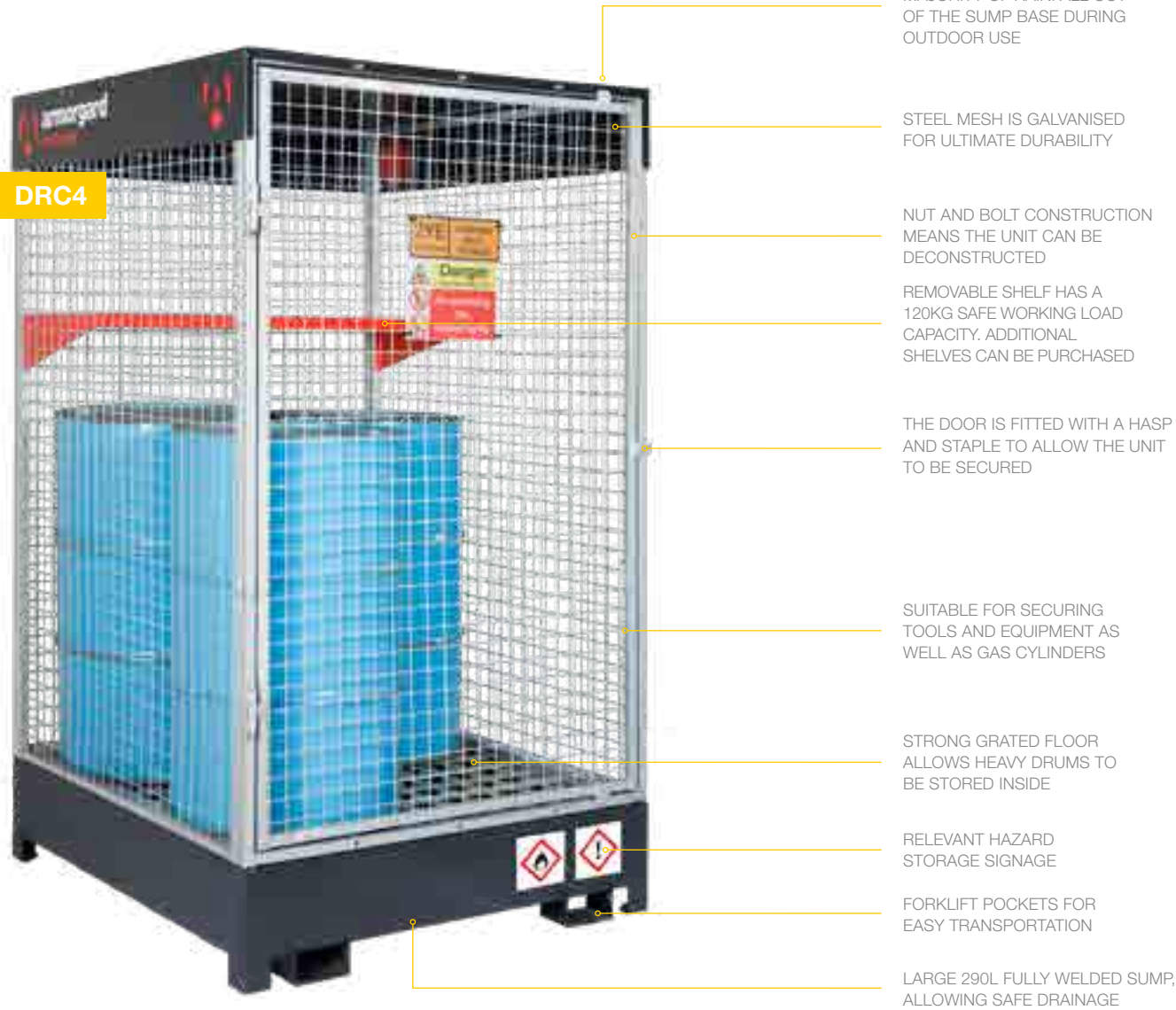
drumcage™



A storage unit suitable for storing many types of hazardous substances.

DrumCage™ is the first choice for the safe storage of hazardous substances. With a unique COSHH compliant design, DrumCage™ is one of the few storage units on the market that is suitable for storing many types of hazardous substances, including gas and liquids.

Compliant with COSHH regulations, Health and Safety Executive's HSG51 and DSEAR standards, as well as GHS labelling requirements.



Product Code	Description	Weight (kg)	External Dimensions W x D x H (mm)	Internal Dimensions W x D x H (mm)	Sump Capacity (L)
DRC4	DrumCage™	192	1285 x 1232 x 2101	1150 x 1150 x 1800	290

Note: Weights and dimensions are approximate. External dimensions include handles.



gorilla gas cage™

**COSHH
COMPLIANT**



Compliant with COSHH regulations, Health and Safety Executive's HSG51 and DSEAR standards, as well as GHS labelling requirements.



The unique galvanised security cage specially designed for storing gas cylinders.

Robustly constructed using 25mm box sections and 3mm wire mesh, the Gorilla Gas Cage™ features a unique modular bolt-together design using individual galvanised panels, making it quick and easy to erect and dismantle. Suitable for use on site or in the storage yard, it comes complete and ready to erect with all fixings and flat packs when not in use.





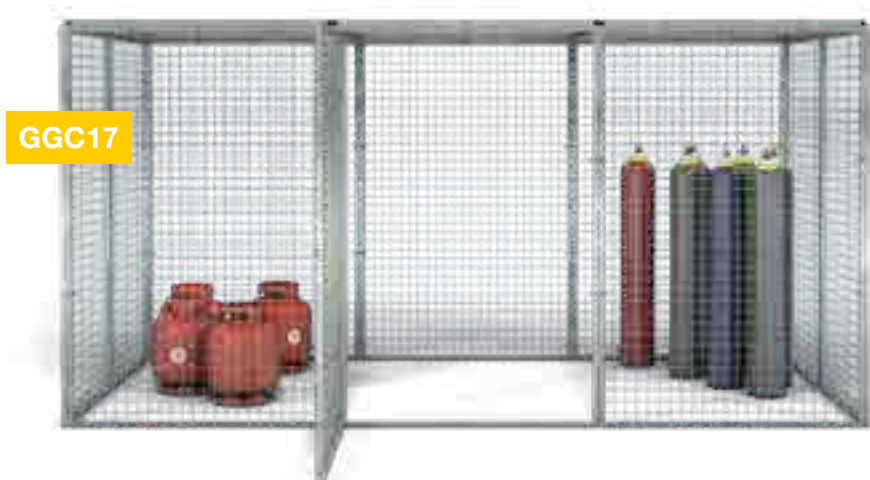
GGC33



GGC7



GGC8



GGC17



GGC4

Product Code	Description	Weight (kg)	External Dimensions W x D x H (mm)	Internal Dimensions W x D x H (mm)
GGC1	Gas bottle cage	40	1015 x 570 x 935	950 x 500 x 850
GGC2	Gas bottle cage with shelf	65	915 x 580 x 1835	850 x 500 x 1750
GGC3	Gas bottle cage	60	915 x 580 x 1835	850 x 500 x 1750
GGC4	Gas bottle cage	68	1215 x 1270 x 1235	1150 x 1200 x 1150
GGC5	Gas bottle cage	67	915 x 970 x 1835	850 x 900 x 1750
GGC6	Gas bottle cage	87	1215 x 1270 x 1835	1150 x 1200 x 1750
GGC7	Gas bottle cage	98	1815 x 970 x 1835	1750 x 900 x 1750
GGC8	Gas bottle cage	108	1815 x 1270 x 1835	1750 x 1200 x 1750
GGC9	Gas bottle cage	135	1815 x 1880 x 1835	1750 x 1800 x 1750
GGC10	Gas bottle cage	165	2415 x 1870 x 1835	2350 x 1800 x 1750
GGC11	Gas bottle cage	188	2715 x 1880 x 1835	2650 x 1800 x 1750
GGC12	Gas bottle cage	182	2415 x 2480 x 1835	2350 x 2400 x 1750
GGC13	Gas bottle cage	226	2415 x 3680 x 1835	2350 x 3600 x 1750
GGC14	Gas bottle cage	270	2415 x 4880 x 1835	2350 x 4800 x 1750
GGC15	Gas bottle cage	314	2415 x 6080 x 1835	2350 x 6000 x 1750
GGC16	Gas bottle cage	279	3615 x 3680 x 1835	3555 x 3600 x 1750
GGC17	Gas bottle cage	205	3665 x 1830 x 1835	3665 x 1750 x 1750
GGC33	Double compartment modular gas cage	120	1815 x 580 x 1835	850 x 500 x 1750 (Per Compartment)
GGC66	Double compartment modular gas cage	174	2415 x 1280 x 1835	1150 x 1200 x 1750 (Per Compartment)

» OPTIONAL EXTRAS

Product Code	Description	Suitable for
SIGN-EMPTY	Sign - 'EMPTY' correx safety sign	Gorilla Gas Cage™ range
SIGN-FULL	Sign - 'FULL' correx safety sign	Gorilla Gas Cage™ range

Note: Weights and dimensions are approximate. External dimensions include handles.





The enclosed store and spill pallet for the safe storage of oil drums and IBC containers.

The Armorgard DrumBank™ is specially designed for the safe storage and dispensing of oil drums. Highly robust, the enclosed version is fitted with a heavy-duty door with a 5-lever deadlock to protect your high-value fuel, oil and other fluids from theft and fire. This innovative purpose-built product is fully compliant with all COSHH regulations for the safe storage of 205L drums.

Compliant with COSHH regulations, Health and Safety Executive's HSG51 and DSEAR standards, as well as GHS labelling requirements.





DB2S

CRANE LIFTING EYES

WELDED SHELF FOR STORING
SMALLER FUEL CANS

SUITABLE FOR STORING
CHEMICALS OR FUELS

FULLY WELDED 240L SUMP
WITH RAISED REMOVABLE
STEEL GRID FLOORING

UP TO 4X 205L DRUMS
CAN BE SECURED INSIDE

SPACE AT THE TOP
ALLOWS YOU TO LEAVE A
PUMP ATTACHED TO THE
DRUMS FOR SIMPLE AND
EASY ACCESS

FULLY WELDED 370L SUMP
WITH RAISED REMOVABLE
STEEL GRID FLOORING



DB4S

 **armorgard**

 **drumbank**TM

Compliant with COSHH regulations, Health and Safety Executive's HSG51 and DSEAR standards, as well as GHS labelling requirements.





DB2



DBP2



DBP4

1345mm



DB2

1290mm



DB4

280mm



DBP4

2205mm

440mm



DBP2



DB2S

2205mm



DB4S

2220mm



DBIBC1

1800mm



Product Code	Description	Weight (kg)	External Dimensions W x D x H (mm)	Internal Dimensions W x D x H (mm)	Sump Capacity (L)
DB2	2 drum DrumBank™	178	1385 x 1089 x 1345	1290 x 1029 x 1082	180
DB4	4 drum DrumBank™	231	1420 x 1359 x 1290	1325 x 1300 x 1030	300
DBP2	DrumBank™ Pallet	20	1300 x 750 x 440	1185 x 635 x 345	250
DBP4	DrumBank™ Pallet	32	1380 x 1290 x 280	1280 x 1190 x 200	405
DB2S	DrumBank™	255	1410 x 930 x 2205	1310 x 850 x 1790	240
DB4S	DrumBank™	345	1410 x 1430 x 2205	1310 x 1315 x 1790	370
DBIBC1	DrumBank™	390	1500 x 1530 x 2220	1430 x 1420 x 1605	1100

Note: Weights and dimensions are approximate. External dimensions include handles.

**“Recommended by
our greenkeeper as
a requirement when
storing hazardous
items to be used on
our bowling green”**

River Bowling Club

**“We already use a
FlamBank at Philip
Kingsley Products
and we definitely
need a second one!”**

Philip Kingsley Products

**“We were advised
to use Armorgard
for great storage of
hazardous goods”**

UAV Tactical Systems Ltd



**“I’ve had my trusty
Armorgard TransBank
since 2014. It has
been on many vehicles
and still does the job”**

Brightstone Landscaping




SECTION

06

spare
parts





spare parts

SECTION 06

spare parts

154

need spare parts?



We can help! We offer spare parts for almost every product in our range, use our spare parts guide to find the part you need for your product, or send us a photo of your product and we'll find the part you need.



Spare parts

To complement our extensive range, we also hold in stock a vast supply of spare parts for our products. This enables us to deliver quickly and fulfil any replacement requirements.



Lost keys

We hold in-stock replacement keys for our products for up to 5 years after purchase, so we can get you quick access should you lose your keys. Each product carries a unique serial number, and this enables us to locate your exact key and dispatch immediately.



Castors

Added flexibility for many of our products. High-quality, heavy-duty castor sets with a unique quick-fit system. Replacements available for simply bolting on yourself, using the pre-drilled holes.



For help, advice and to place orders,
contact our team on **023 9238 0280**
or email **sales@armorgard.co.uk**
www.armorgard.co.uk



Find us on social media:



UK Head Office

Unit 14-16 Standard Way, Fareham Industrial Park,
Fareham, Hampshire
PO16 8XB

armorgard products available from:



STORAGE DESIGN LIMITED
Tel: 01446 772614
email: info@storage-design.ltd.uk
web: www.storage-design.ltd.uk

