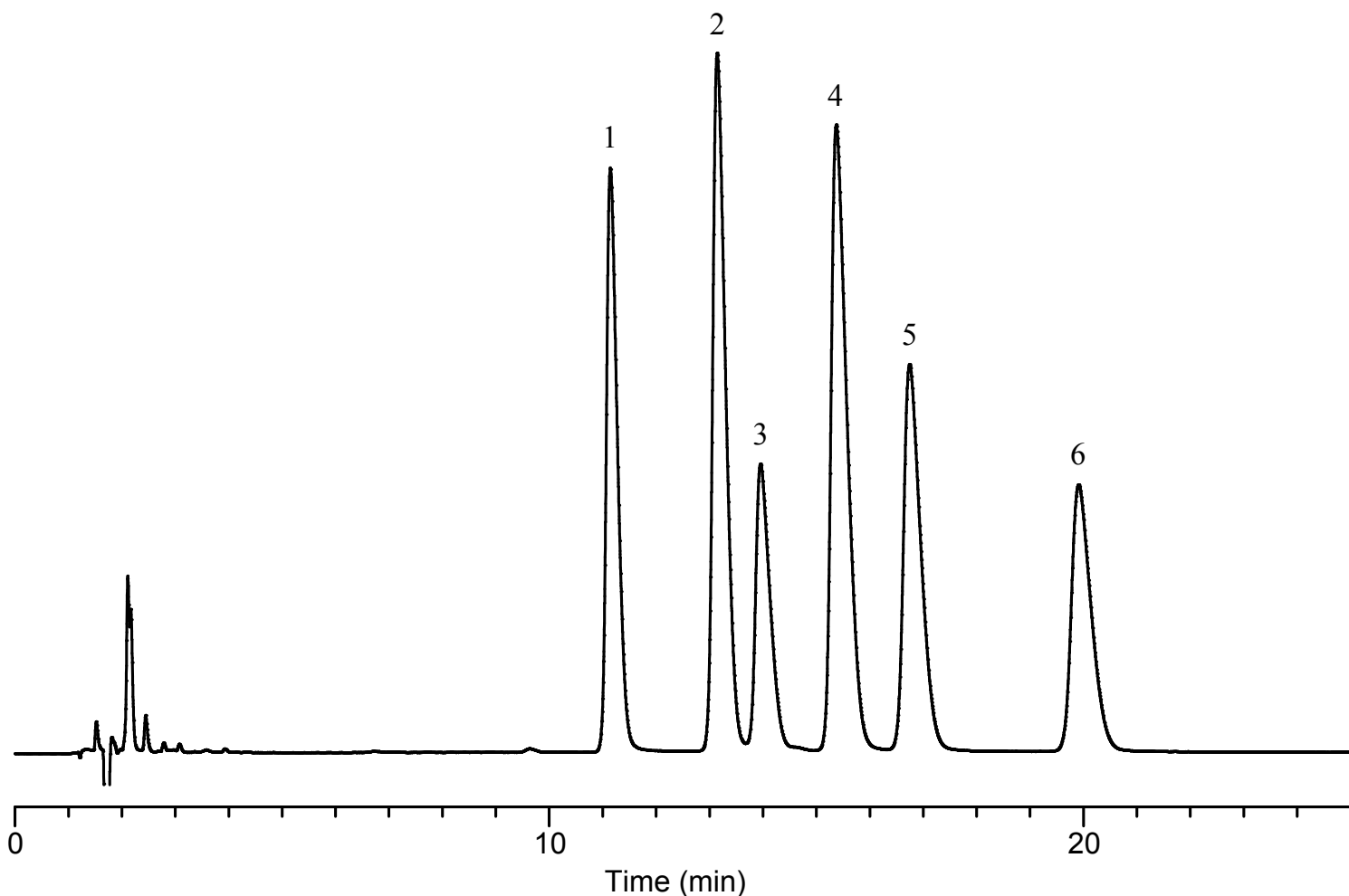


# InertSearch™ for LC

Inertsil™ Applications

## Analysis of Antidepressants

Data No. LB588-0806



### Conditions

**System** : GL7700 HPLC system  
**Column** : InertSustain PFP HP (3  $\mu$  m, 150 x 2.1 mm I.D.)  
**Column Cat. No.** : 5020-87921  
**Eluent** : A) 0.1% HCOOH in CH<sub>3</sub>CN  
B) 10 mM HCOONH<sub>4</sub> + 0.1% HCOOH in H<sub>2</sub>O  
A/B = 40/60, v/v  
**Flow rate** : 0.2 mL/min  
**Col. Temp.** : 40 °C  
**Detection** : UV 230 nm (UV7750 with semi-micro flow cell)  
**Injection Vol.** : 2.5  $\mu$  L  
**Sample** : Standard

### Analyte:

1. Mianserin	100 mg/L
2. Nortriptyline	100 mg/L
3. Imipramine	100 mg/L
4. Amitriptyline	100 mg/L
5. Sertraline	100 mg/L
6. Clomipramine	100 mg/L