



EXPANDA
BOX™



www.expanda-box.co.uk



Contents

Expanda Pod 6.0m	3
------------------	---

Expanda Pod 4.0m	10
------------------	----

Pod specs	15
-----------	----

Plan a visit	16
--------------	----

Expanda Box	17
-------------	----

Box specs	23
-----------	----

Get in touch	24
--------------	----

Expanda Pod 6.0m





Expanda Pod 6.0m

The space you've always dreamed of

Our innovative little pods are beautifully designed and come fully insulated with a built-in kitchenette and bathroom.

Our pods provide an atmospheric setting, full of light, fit for a variety of domestic or commercial uses.

They come available in a 6.0m or 4.0m size with white and black colour options available to suit your preference.

Glamping pods

Expanda Pod 6.0m

More weatherproof than yurts, less maintenance than shepherd's huts.

These warm, cosy glamping pods provide year-round comfort for your guests and a glamping income for you.

A shower room, kitchenette and plenty of power sockets mean your guests can enjoy beautiful outdoor spaces right outside with all the comforts of home.



Garden rooms

Expanda Pod 6.0m

Need somewhere quiet to work, relax or host guests? Imagine... your own garden bar, writing pod, yoga studio, or art space?

With Expanda Pod you can bring your garden room dreams to life.

- Double-glazed and insulated.
- Connected to mains power.
- Built-in shower room, kitchenette.
- Easy to setup and transport if you move.



Expanda Pod 6.0m



Increased floor space

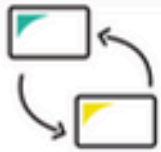
Expanda Pod 6.0m

The unique “slide out” design allows the back side of the Expanda Pod 6.0m to extend, giving you a generous 20 sqm floor space.



Expanda Pod design features

Why we love these clever pods



Multi-purpose

These versatile pods have so many possible uses. Ideal as a garden room, office, glamping pod or guest room.



All-weather use

Expanda Pods have a galvanized steel frame and insulated walls to withstand all seasons and weather.



Premium fixtures

Double-glazed doors, awning windows, internal and external power sockets for complete connectivity.



Easy setup

Forklift pockets, rollers, and adjustable feet mean these portable pods are easy to set up and easy to relocate.



Space-saving design

The slide-out feature expands the interior once installed.



Kitchenette & bathroom

Expanda Pods include a kitchenette and full bathroom for total convenience.



Energy-efficient

Double-glazed windows and LED lighting reduce energy use and enhance comfort.



Low maintenance

Built from durable materials which need minimal upkeep and maintenance.

Expanda Pod 4.0m



Expanda Pod 4.0m

Clever space versatility

We love our Expanda Pod 4.0m because of it's intelligent use of a compact space.

A toilet, shower, vanity, desk, drawers, shelving, cabinetry unit & fold-out bed are all included as standard.

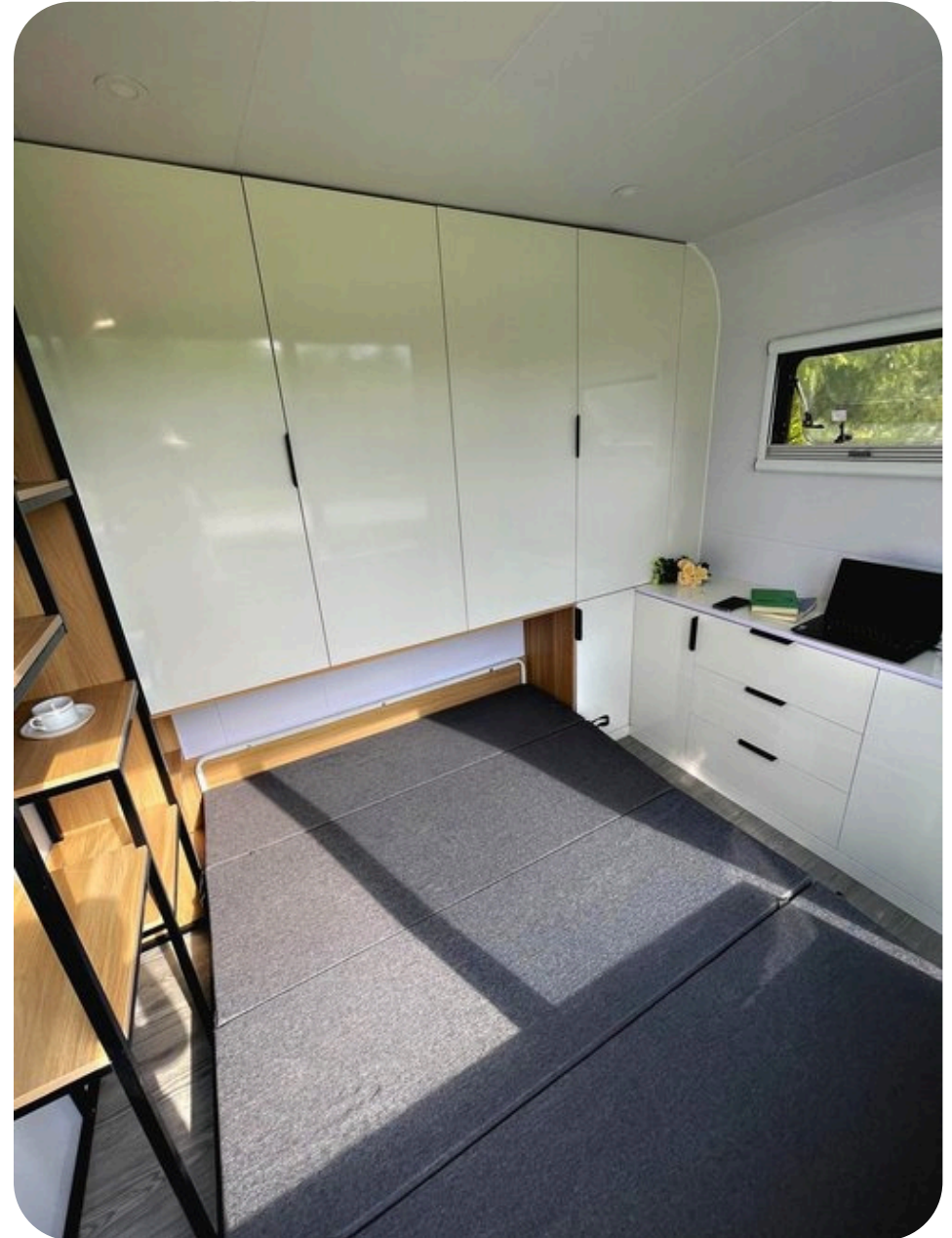
Like the 6.0m pod, it comes with floor to ceiling tinted windows at the front allowing plenty of light in, with curtains also included.



Transformable space

Expanda Pod 4.0m

With a fold-out bed, quality cabinetry and a functional shelving unit, the 4.0m pod is perfectly suited to office space by day and a bedroom by night.





Shower included

Expanda Pod 4.0m

For the convenience of family, friends or guests, our 4.0m pod includes a small shower area and vanity.

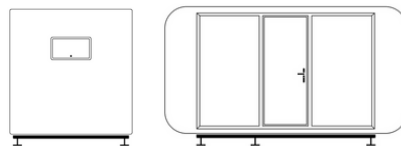


Expanda Pod 4.0m

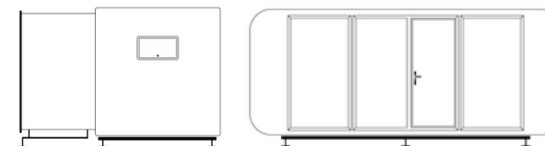


Pod specs

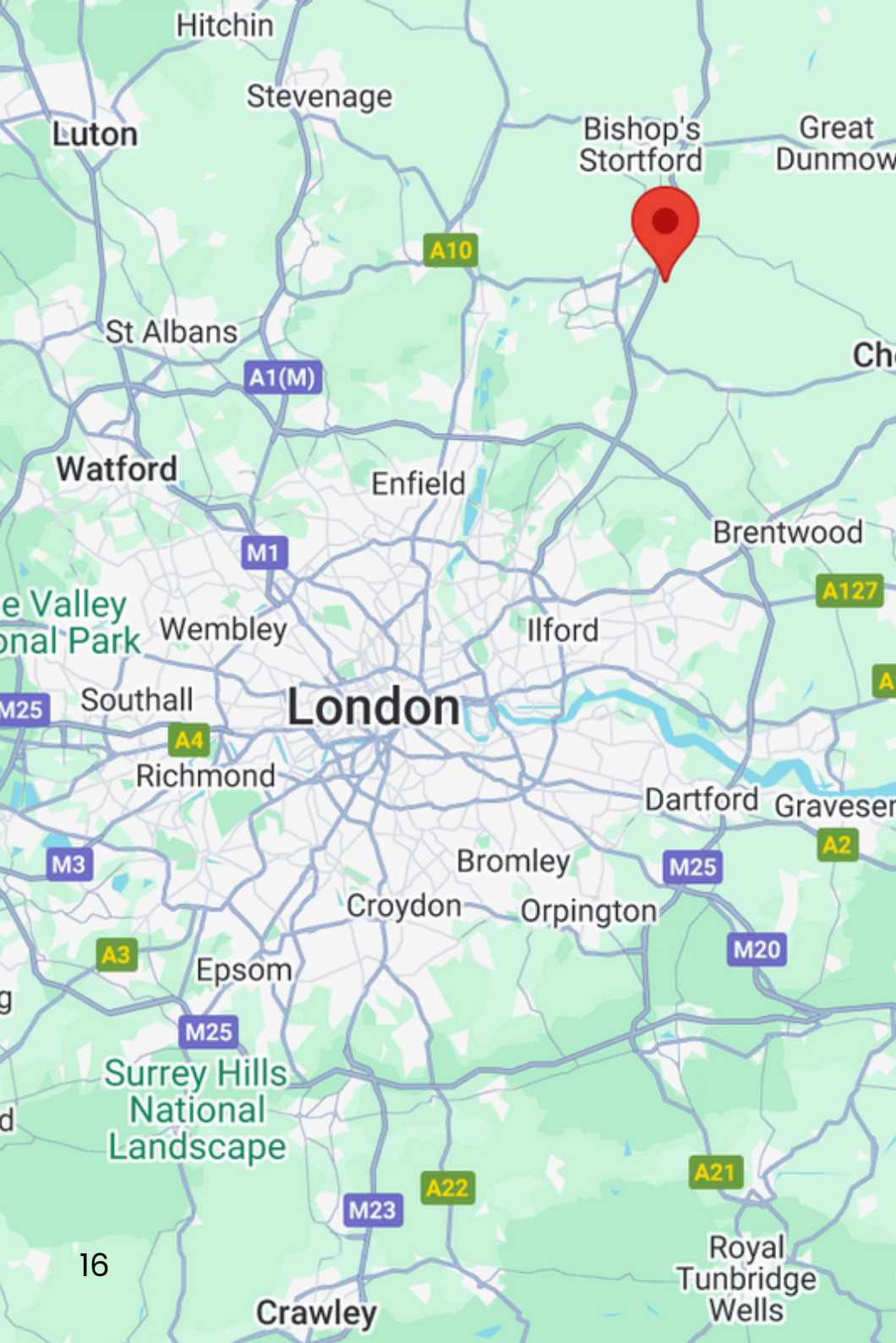
Expanda Pod 4.0m



Expanda Pod 6.0m



Price	£15,900 (inc 20% VAT)	£19,900 (inc 5% VAT)
Delivery Cost	Contact us for a quote	
Size (length x depth x height)	4.0m x 2.24m x 2.48m	5.85m x 4.2m x 2.48m
Floor Size	8 sqm	20 sqm
Weight	1,100 kg	2,100 kg
Bedding	Fold out bed	Space for double bed
Walls	Fluorocarbon composite board	
Windows	Awning-style. Double glazed 5mm glass with flyscreen & blind	
Door	Aluminium frame. Double-glazed 5mm glass. Lockable	
Electrical	Patented Housing BS7671 standard	
Lighting	Ceiling LED lights	
Flooring	3mm Anti-slip vinyl	
External power connection	Waterproof 15 Amp power socket provided	
Internal power	Double GPO power sockets, provision for A/C included	



Plan a visit

Matching Tye, Harlow, Essex

Get in touch to arrange book a showroom appointment today.

Email

sales@expanda-box.co.uk

Phone

+44 (0)7565 904 658

Address

Housham Hall Farm Business Units,
Harlow Road,
Matching Tye, Harlow,
Essex CM17 0PB



Expanda Box

Ready to use in just 10 minutes

Expanda Box is a flat-pack living space that can be set up in 10 minutes.

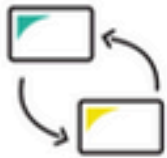
These portable, versatile units are weatherproof, fully insulated and come with LED lighting and power points both inside and out.

Expanda Box is a great choice for building sites, warehouse offices, temporary accommodation and emergency shelters.



Expanda Box design features

Why we love these flat-pack units



Multi-purpose

15 sqm floor area makes Expanda Box great for offices and temporary living space.



Fast assembly

These portable units are safe and easy to set up. Ready to use in just 10 minutes.



Strong & durable

Fireproof and waterproof. Reinforced flooring, stainless steel hardware and rust-proof finish.



Fully connected

Includes 8 internal and external power sockets as standard. Just plug it in!



Flat-pack

Folds down to 2.5m x 0.36m x 5.8m. Easy to store and move.



Colour options

Colour options are available by pre-order.



Energy efficient

Fully insulated with LED lighting to save energy.



Extra options

Bathroom, kitchenette and heating add-ons available.

Flat-pack and stack

Expanda Box

Uniquely designed for efficient storage and quick deployment for emergency shelter. The Expanda Box unit can be popped up in just 10 minutes.





Plug-in power

Expandable Box

Did you know that our 4.0m pod also comes with a shower area and toilet for total convenience in both domestic and commercial environments.



Expanda Box

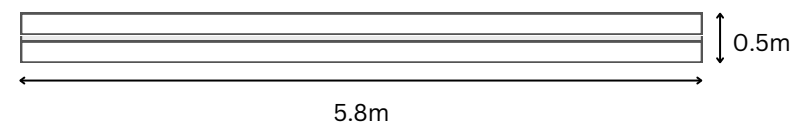


Box specs

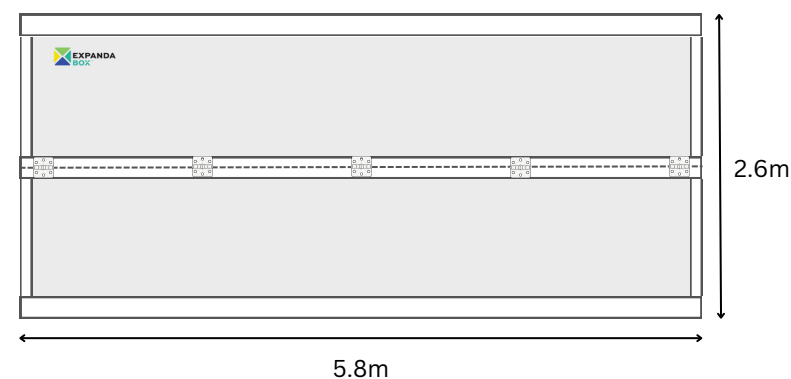
Expanda Box

Price	£15,900 inc 20% VAT
Delivery Cost	Contact us for a quote
Size (length x depth x height)	5.8m x 2.5m x 2.6m
Internal volumetric size	29.9 m3
Weight	1,100 kg
Walls	50mm fireproof steel sandwich panel
Insulation	Glass wool
Windows	Two sliding windows 1200mm x 950mm
Door	Lockable front door 1980mm x 920mm
Electrical	Patented housing BS7671 standard
Lighting	Two ceiling LED lights
Flooring	MGO board with PVC floor covering
Power sockets	Eight power sockets
Lifting cradle	Crane lifting standards BS7121 compliant

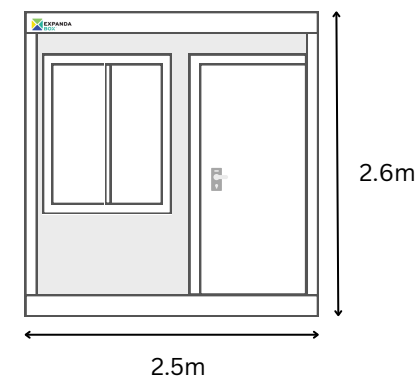
Side Profile - Flat Pack

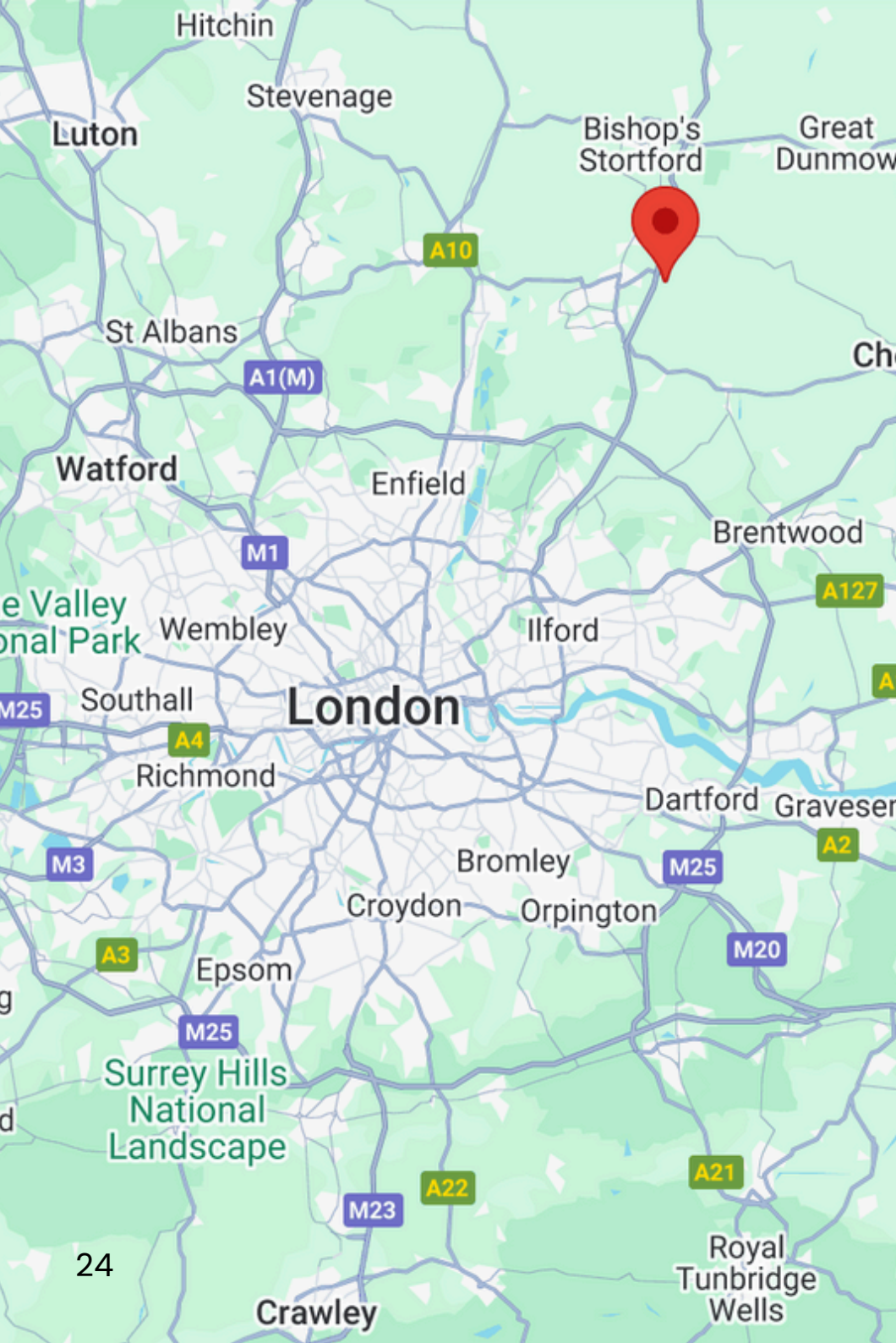


Side Profile - Expanded



Front Profile - Expanded





Get in touch

Matching Tye, Harlow, Essex

Get in touch to talk to our team about any of our Expanda products.

Email

sales@expanda-box.co.uk

Phone

+44 (0)7565 904 658

Address

Housham Hall Farm Business Units,
Harlow Road,
Matching Tye, Harlow,
Essex CM17 0PB

www.expanda-box.co.uk