



RADICLE

February 2022

issue 1

FOR THE LOVE OF NATURE

Winnie Palmer Nature Reserve
at Saint Vincent College

RADICLE?

"What IS this?" you might be asking. What you are holding is the maiden issue of Radicle zine. A zine, short for magazine, is a small, self-published work of art, words, and ideas created for the sole purpose of spreading information. This is ours.

Botanically, the radicle is the first part of the seed to develop, growing into the main root, and feeding the plant. A metaphor for the environmental education we so strongly believe in, we hope that Radicle will be the root of many inspiring nature ideas to come.

Radicle is a radical new way of reaching our community with all things earth-centric. We hope you enjoy Radicle *issue 1: For the Love of Nature*. If it inspires you, share it with friends, family, or strangers, let us know on social media, send an email, or just stop by to say hey!



Have an idea you'd like to share?
Email your ideas to: jennifer.eppolito@stvincent.edu

This zine is published quarterly by
The Winnie Palmer Nature Reserve at Saint Vincent College.

Find us in our Little Free Seed + Book Library,
the Learning Center Barn, the Saint Vincent College Library,
and in digital form at www.wpnr.org

CELEBRATE BLACK HISTORY MONTH

FEBRUARY I-MARCH I

DAYBREAK IN ALABAMA

LANGSTON HUGHES

FEBRUARY 11, 1902-MAY 22, 1967

WHEN I GET TO BE A COLORED COMPOSER
I'M GONNA WRITE ME SOME MUSIC ABOUT
DAYBREAK IN ALABAMA
AND I'M GONNA PUT THE PURTIEST SONGS IN IT
RISING OUT OF THE GROUND LIKE A SWAMP MIST
AND FALLING OUT OF HEAVEN LIKE SOFT DEW
I'M GONNA PUT SOME TALL TALL TREES IN IT
AND THE SCENT OF PINE NEEDLES
AND THE SMELL OF RED CLAY AFTER RAIN
AND LONG RED NECKS
AND POPPY COLORED FACES
AND BIG BROWN ARMS
AND THE FIELD DAISY EYES
OF BLACK AND WHITE BLACK WHITE BLACK PEOPLE
AND I'M GONNA PUT WHITE HANDS
AND BLACK HANDS AND BROWN AND YELLOW HANDS
AND RED CLAY EARTH HANDS IN IT
TOUCHING EVERYBODY WITH KIND FINGERS
TOUCHING EACH OTHER NATURAL AS DEW
IN THAT DAWN OF MUSIC WHEN I
GET TO BE A COLORED COMPOSER
AND WRITE ABOUT DAYBREAK
IN ALABAMA.



Colors of Winter



Leafcutter bees are found on almost every continent. Pennsylvania is home to about 140 different species including *Ashmeadiella*, *Heriades*, *Hoplitis*, *Coelioxys*, *Lithurgus*, *Megachile*, and *Osmia*. They use the leaves of deciduous plants, and although they make lots of designs, it's harmless to them. Leafcutters, like most bees, are non-aggressive and will not sting humans unless provoked.



Leafcutter bees cut leaves into tiny circles to make leaf-wrapped capsules in holes and hollow stems to raise brood, or juvenile bees. Each one holds a single larvae and enough pollen to feed it. The larvae develop in these colorful tunnels during winter and emerge in spring, pollinating wildflowers, fruits, and vegetables.



Our director, Angela Belli, shares what she loves about nature through her beautiful photos.



The perfect symmetry in nature.



The magic ferns of all shapes and sizes on the forest floor.



When we can see ecosystem interactions in real time.



A springtime snow.



Textures and hues in nature.



Sweet little dewdrops in early morning.

The Great Backyard Bird Count

February 18-21, 2022

Be a good human and participate in citizen science by sharing your bird observations on eBird.

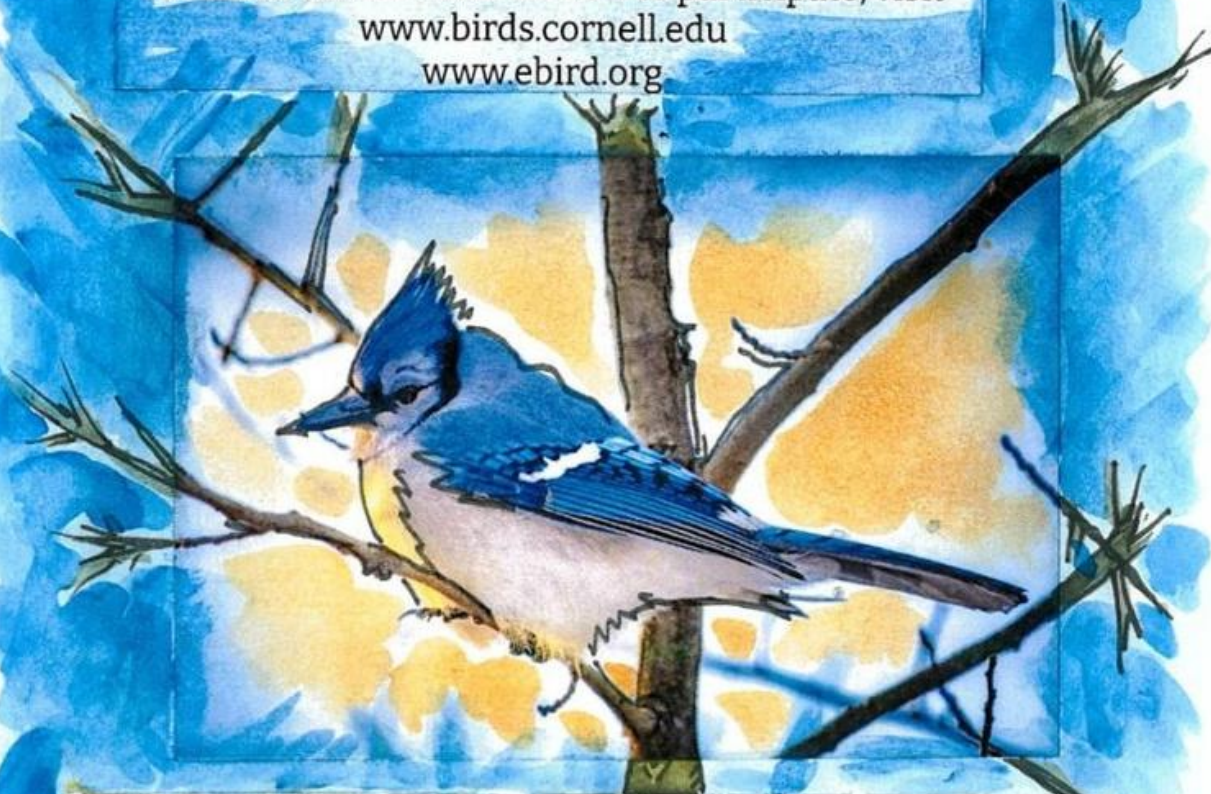
You can count right in your backyard, or take a walk in the park.

Any bird, anywhere. It all counts!

This year the Cornell Lab of Ornithology celebrates 25 years of coming together to watch, learn about, count, and celebrate birds.

The Great Backyard Bird Count uses eBird, one of the world's largest nature databases. It stores more than 100 million bird sightings contributed each year and is used by professionals for science and conservation. You can enter your count on their website or app.

For more information on how to participate, visit
www.birds.cornell.edu
www.ebird.org



P.S. USE THE CHECKLIST INSIDE THE FRONT COVER TO COUNT!



HOT STUFF!

Wild Chiltepin Pepper

Chiltepin peppers are a beautiful wild native species of the U.S. Southwest. Nicknamed the Gringo Killer, the chiltepin is extremely hot, ranking a whopping 50,000 to 100,000 units on the Scoville Scale.

Chiltepins are highly revered by Native American tribes of the Southwest, as part of their food, history, and culture. These rare chilis grow wild and are protected in Big Bend National Park, Coronado National Forest, and Organ Pipe Cactus National Monument.

Grow as a tender annual. Start indoors 8-12 weeks before the last frost date.

- 8-12 hours of Sun
- Sprouts in 7-10 Days
- Seed Depth: 1/4"
- Plant Spacing: 14-18"



NYT: Water Supplies From Glaciers May Peak Sooner Than Anticipated



The Guardian: A third of Americans are already facing above-average warming

NBC: Date set for first youth-led climate trial in U.S. history

THE CLIMATE IS CHANGING! WHY AREN'T WE?

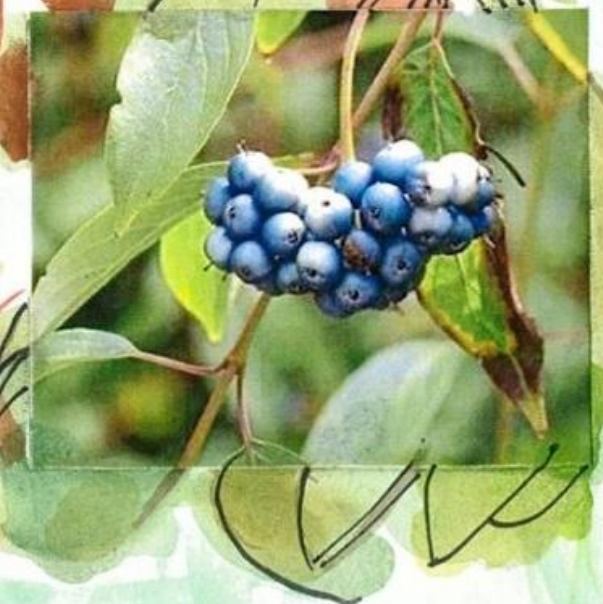
SCIENCE NOT SILENCE!

respect existence or expect resistance

BBC: Climate change: UK plants now flowering a month earlier

Pennsylvania Native Tree Favorite: Silky Dogwood

Creamy white June flowers, inky blue iridescent August berries, dazzling violet October foliage, and striking red stems juxtaposed against a stark winter landscape, makes *Cornus amomum*, Silky Dogwood, a multi-season stunner. Fast growing, foolproof, and smaller than its' cousin, Flowering Dogwood, it attracts catbirds, mockingbirds, cardinals, bluebirds, flickers, and more. Silky Dogwood supports a multitude of native pollinators, is a host plant for the spring azure butterfly, a rich nectar source for andrena mining bees, and a food source for a long list of mammals. At only 12 feet, it stands tall among our native trees. You can find Silky Dogwood and other PA natives at Friendship Farms Native Plant Nursery in Pleasant Unity.





For the Love of Nature Word Search

H	E	D	I	S	K	Y	F	G	C	G	H	D	E	D
R	I	Y	O	P	M	L	I	H	D	U	R	A	A	Y
Y	P	B	I	G	B	T	I	K	R	B	Z	Y	M	A
O	G	T	E	B	W	L	K	E	N	K	M	B	F	P
E	B	O	B	R	T	O	T	V	H	N	S	R	B	R
W	J	J	L	E	N	T	O	I	I	I	N	E	P	Y
W	M	D	P	O	U	A	P	D	U	T	O	A	S	W
T	W	I	T	C	H	J	T	U	Y	S	W	K	N	C
M	N	O	F	P	J	T	W	I	Y	K	F	G	I	G
E	M	A	C	J	Q	G	I	K	O	W	L	I	A	V
A	E	F	R	O	S	T	I	N	L	N	A	U	T	W
L	F	Z	T	B	B	S	L	H	R	B	K	P	N	X
S	U	O	U	D	I	C	E	D	J	O	E	F	U	J
E	L	C	I	D	A	R	D	D	W	C	S	F	O	S
W	J	N	U	G	C	R	D	E	H	M	U	T	M	V

chiltepin
daybreak
deciduous
dogwood
frost
hibernation

leafcutter
mountains
ornithology
radicle
snowflake
stinkbug



FIERY-HEARTED CACAO BREW

Grab a mug and get your spice on with this mix-ahead-heart-revving-brew for Valentine's Day!

1 ½ c. brown sugar
1 c. unsweetened raw cacao (or cocoa)
¼ teaspoon sea salt
1 teaspoon cinnamon
¼ tsp. fresh ground nutmeg
Pinch cayenne pepper

Mix all ingredients together, store in an airtight jar.

To make the brew:

Heat an 8 oz mug of dairy or plant-based milk in a saucepan over low until warm.

Whisk in 1 ½ tablespoons of the mix for every mug.

Top with marshmallows, whipped cream and cinnamon, or plant milk foam and brown sugar!

FEATURED ARTIST

Parker, age 9

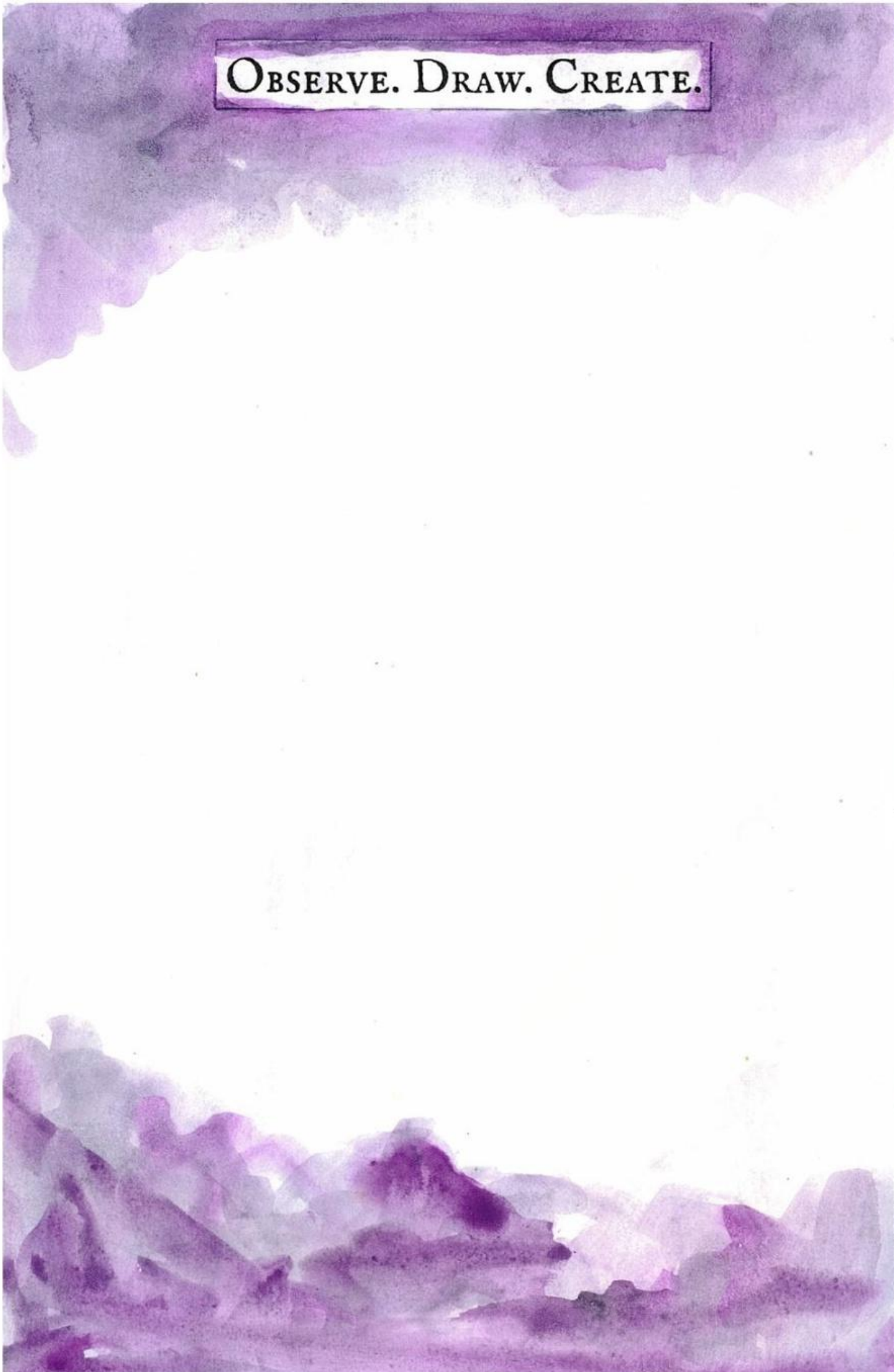


"Rainbow Mountain"

2022

What do you like best about art? "It's colors!!"
How does nature inspire your art? "It is delicate and unique."

OBSERVE. DRAW. CREATE.



Show your love for nature.



Use the dotted guide to add your own flower designs, then color, tear, and share with your valentine!

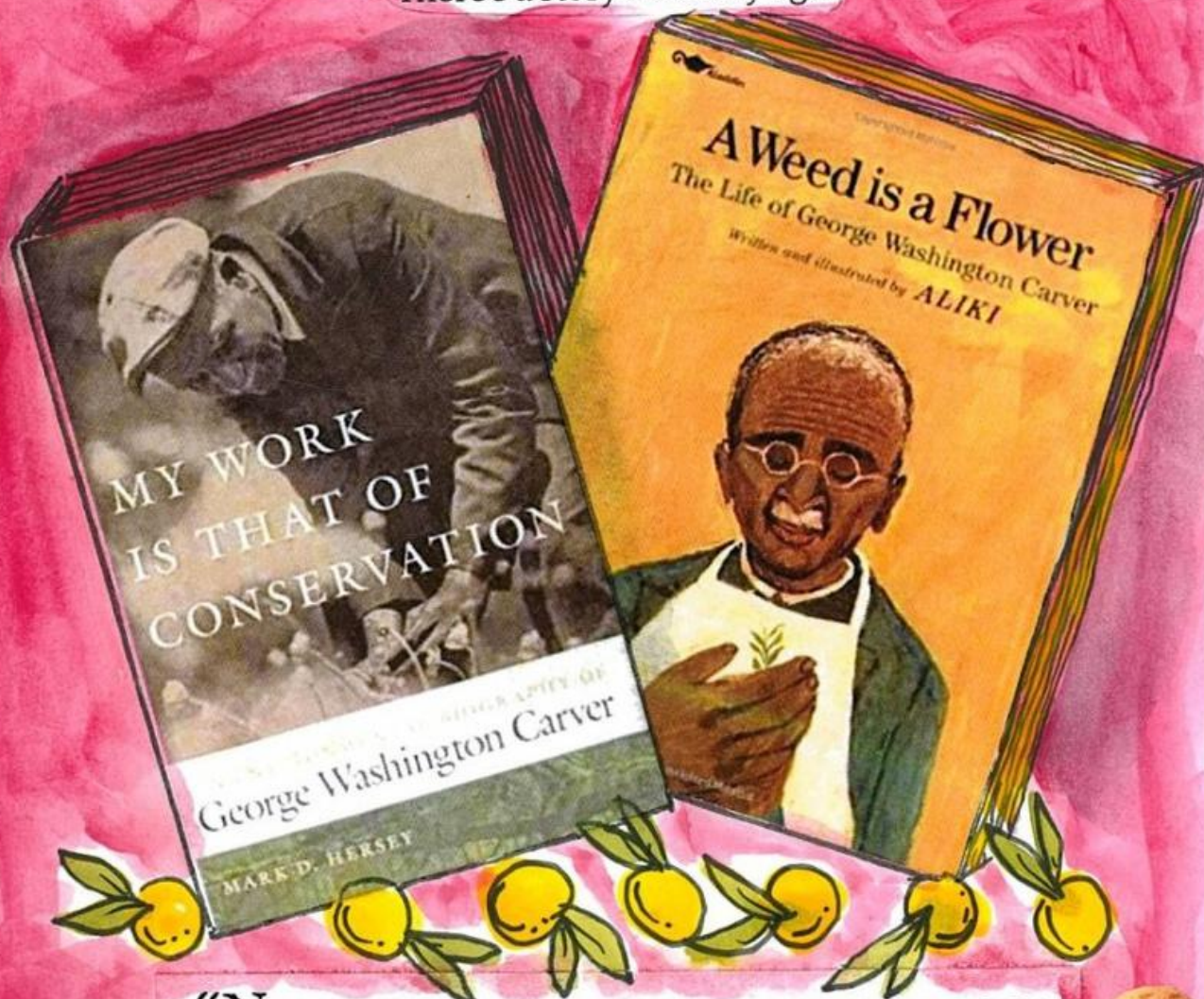
HAPPY BIRTHDAY GEORGE WASHINGTON CARVER!

JANUARY 1861-JANUARY 1943

George Washington Carver was a celebrated agricultural scientist, agronomist, and inventor. Born enslaved and raised on a farm near Diamond, Missouri, he left home at a young age to attend college. Upon earning Master's Degree from Tuskegee University, he developed hundreds of products using peanuts, sweet potatoes and soybeans.

The inspiring story of his life's work is an important part of our culturally diverse American history. To learn more, visit our library in the Learning Center Barn to read these fascinating new books.

There's a story for every age!



“NOTHING IS MORE BEAUTIFUL THAN THE
LOVELINESS OF THE WOODS BEFORE SUNRISE.”

-GEORGE WASHINGTON CARVER



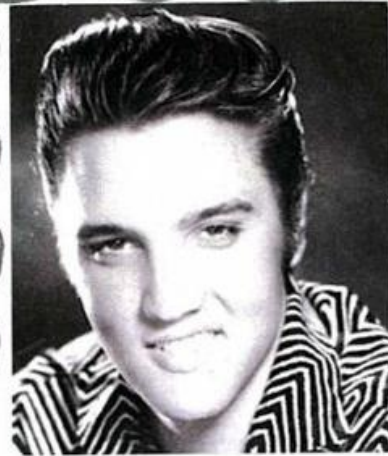
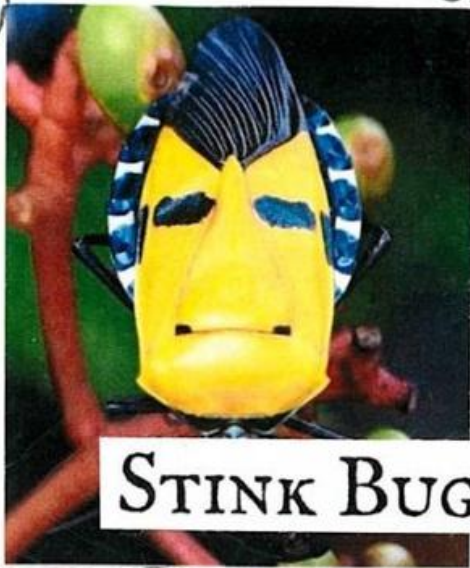


GARDEN DREAMS

We're all imagining lush vegetable gardens, but in Southwestern PA, how much longer do we have to wait? Here's a handy list of common veg and the earliest dates for planting them outdoors in zone 6A.

As a general rule, the last frost date in zone 6A is May 10, but this is an ever-lengthening date. Hello, climate change.

- 
- 
- 
- 
- Onions: March 29
 - Peas: April 5
 - Spinach: April 5
 - Cabbage (plants): April 12
 - Cauliflower (plants): April 12
 - Radish: April 12
 - Beets: April 19
 - Potatoes: April 19
 - Broccoli (plants): April 19
 - Lettuce: April 19
 - Carrots: April 26
 - Chard: April 26
 - Green Beans: May 24
 - Corn: May 24
 - Cucumbers: May 31
 - Squash: May 31
 - Melons: May 31
 - Peppers: June 7
 - Tomatoes: June 7
 - Basil: June 7
 - Okra: June 14
 - Pumpkins: June 14



STINK BUG DOPPELGANGER

ONLY A ROCK-N-ROLL HEARTTHROB COULD MAKE THE MOST ANNOYING BUG ON THE PLANET LOOK COOL. PHOTOGRAPHER DARLYNE MURAWSKI FROM MASSACHUSETTS SAW THE BUG ON A LEAF WHEN SHE WAS ON ASSIGNMENT FOR NATIONAL GEOGRAPHIC IN THAILAND. THE BUG IS ACTUALLY A MAN-FACED STINK BUG, *CATACANTHUS INCARNATUS*, A MEMBER OF THE GENUS OF INSECTS IN THE FAMILY PENTATOMIDAE, FOUND IN PARTS OF ASIA. WE'RE NOT SURE ELVIS WOULD BE FLATTERED, BUT HE'S NOT THE ONLY HUMAN BEARING SIMILARITY TO THE BUG. YOU BE THE JUDGE: ELVIS, BERT, GROUCHO, OR EUGENE?



 @wpnr

 @wpnratsvc

