



TEAM NEWS

September 2024



BUILD WITH CONFIDENCE

With over 25 years experience, our work is superior, certified and guaranteed.



HIGHRISE
— COMMERCIAL —

0432 296 009 - 03 9803 2308
www.highrisemechanical.com.au
jake@highrisemechanical.com.au
 28/170 Forster Rd, Mount Waverley VIC 3149



Highrise is accredited and holds the required permits and licenses to complete your works to the highest compliance standards.

Australian Refrigeration Council Ltd Certified - Authorisation No: AU59204



LIVE BUILDERS

E.J.B. HOLDINGS



LORDEN
VELLA.

VCON



PROCORE®

Haier



SAMSUNG



PROJECT FEATURE



NIGHTINGALE UMARKOO WAYI

We are excited to announce that we have been awarded the contract for the mechanical services at Nightingale Umarmoo Wayi with Cobild.



Located on 170 Sydney Road in Coburg, this project delivers on Nightingale Housing's principles of building less, to give more.

In consultation with Wurundjeri Elders, the building has been given the name 'Umarmoo Wayi' which means 'All of us' in Woi Wurrung language.

With a distinctive red brick facade, this brand new apartment building will feature 48 homes (including lofty SOHO-style and small-footprint Teilhaus apartments) and 2 commercial tenancies at street level.

Works are due for completion in 2025.

PROJECT UPDATES

COMPLETED JOBS

Well-done to the Highrise team for their hard work on these jobs!

FDC OFFICE - LVL 2



Additional level completed for the FDC spec suites in Docklands in September.

SMILE AVENUE CLINIC



Major works completed in September and final commissioning to start in October.

PROJECT UPDATES

HODDLE STREET - L 6.1 & 6.2



Office fit-out completed for level 6.1 and 6.2 at 222 Hoddle Street in Collingwood.

BEHIND THE SCENES

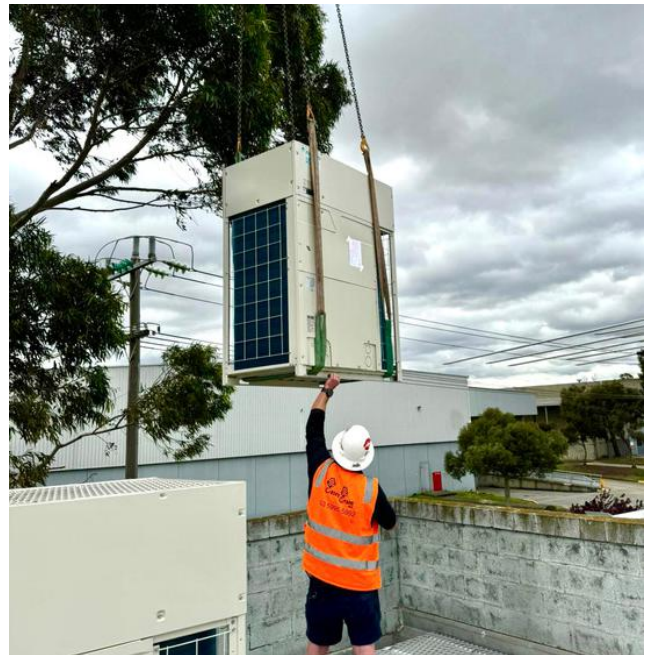
Here's a behind-the-scenes look at some on-site work we did this month.

SMILE AVENUE CLINIC



Wednesday 4 September 2024 - Pipe work completed for a dental clinic in Cranbourne.

LENLEASE ALTONA



Friday 20 September 2024 - Crane lift in action at Westgate Drive in Altona.

STAFF BBQ AT SEDDON

This month, we treated our staff and fellow on-site workers at Seddon Square with a barbeque to celebrate a job well-done to date.



MANAGING RISKS AT WORK

Use the hierarchy of control to reduce and eliminate risks in the workplace. It is a step-by-step approach that ranks risk controls from the highest to lowest level of protection and reliability.

ELIMINATION

Remove the hazard

SUBSTITUTION

Substitute the hazard with something safer

ENGINEERING CONTROLS

Isolate people from the hazard

ADMINISTRATIVE CONTROLS

Change the way people work

PPE

Use PPE

