

GET SMART

THE CONNECTED SHOP



**MUG WARMER WIRELESS CHARGER
USER MANUAL**

Welcome to the Mug Warmer Wireless Charger User Manual. Your easy, step-by-step guide to set up your Mug Warmer Wireless Charger. The device is designed to be easy-to-use and to replace all average mug warmers with this modern wireless mug warmer.



SUMMARY

I. Device Set Up



- 1. Set-up Guide
 - a) Set-up Video

PACKAGING DETAILS



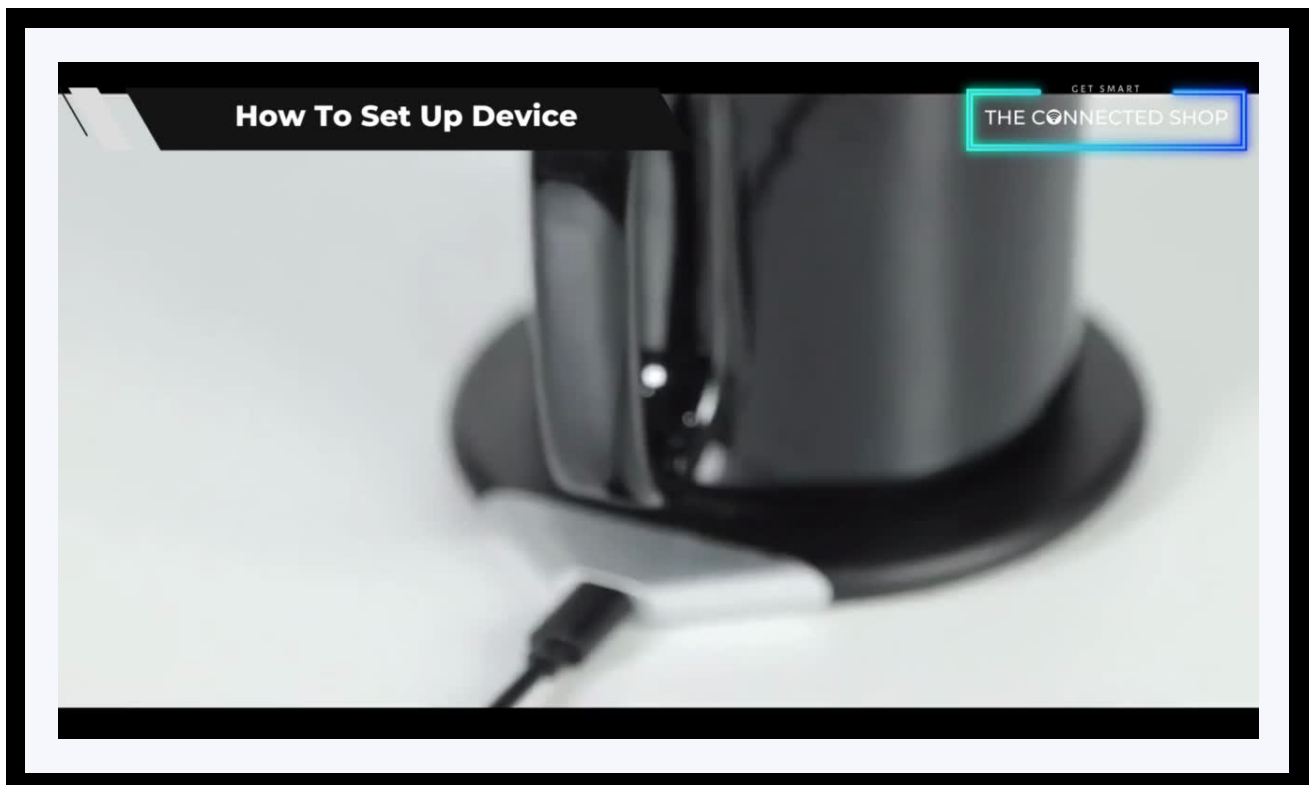
1 Mug with Warmer

2 Plug

1. SET UP



- a. Remove all items from its original box
- b. Please wash and clean the mug prior to its first use
- c. Connect the mug warmer and the adapter using the cable provided
- d. Make sure that the device is plugged in while using it
- e. This keeps your drinks warm and can even wirelessly charge your compatible smart phone



Congratulations!

You have successfully set up your very own Mug Warmer Wireless Charger.

Thank you for being a valued customer of The Connected Shop.

www.theconnectedshop.com





THE CONNECTED SHOP