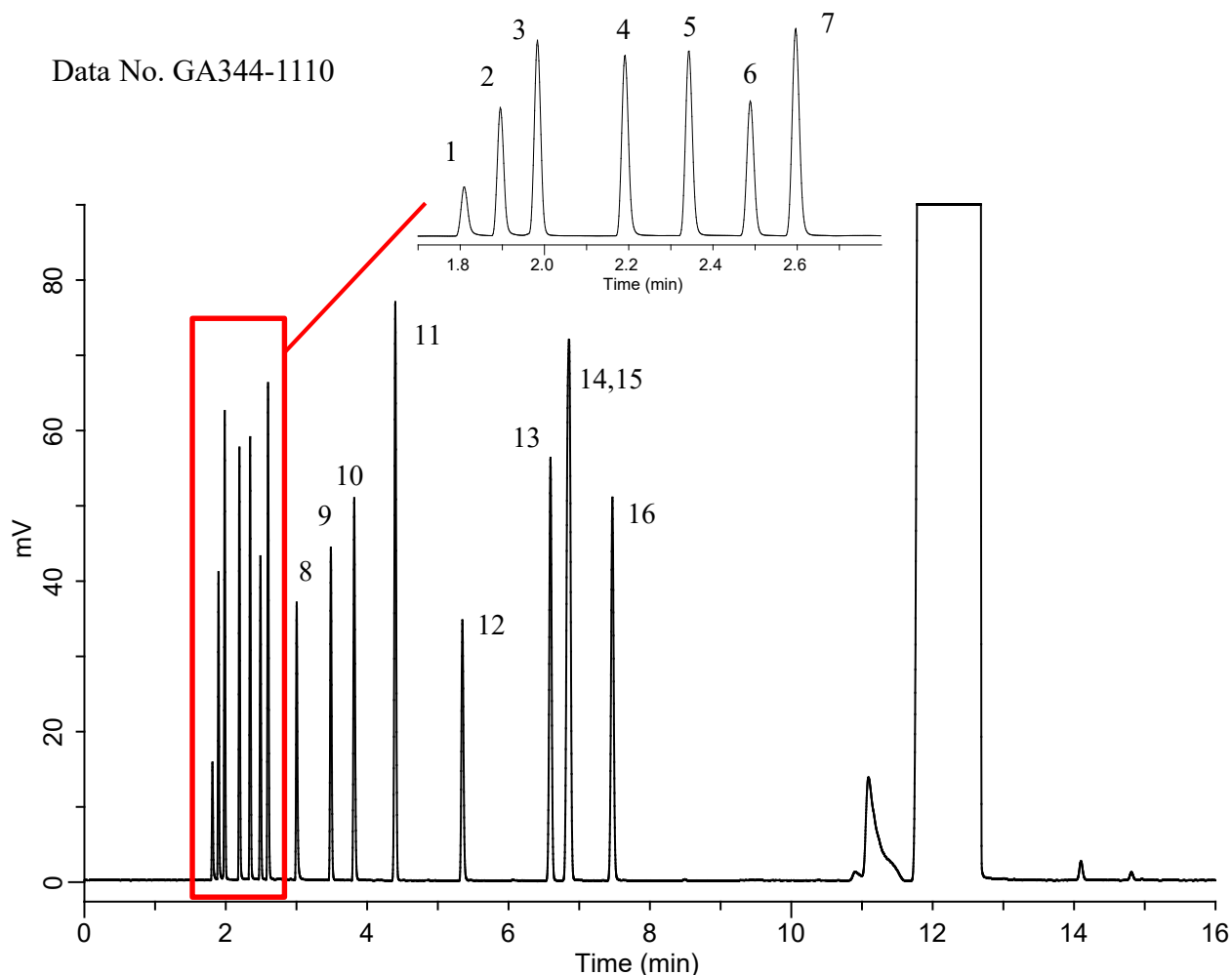


# InertSearch for GC

InertCap Applications

## Organic solvents in 1,2-Dichlorobenzene

Data No. GA344-1110



### Conditions

**System** : GC-4000 Plus/FID  
**Column** : InertCap 1HT (GL Sciences Inc.)  
0.25 mm I.D. × 30 m df = 0.25 μm  
**Col. Cat. No.** : 1010-01142  
**Col. Temp.** : 40 °C(1 min) - 4 °C/min - 100 °C  
**Carrier Gas** : N<sub>2</sub> 1.3 mL/min  
**Injection** : Split 1:50  
350 °C  
**Detection** : FID Auto Range  
380 °C  
**Sample Size** : 1000 ppm in 1,2-Dichlorobenzene  
0.5 μL

### Analyte

1. Methanol  
2. Ethanol  
3. 2-Propanol (Isopropyl alcohol)  
4. 1-Propanol  
5. 2-Butanone  
6. Ethyl acetate  
7. 1-Butanol  
8. 1-Methoxy-2-propanol  
(Propylene glycol monomethyl ether)  
9. n-Propyl acetate  
10. Methyl isobutyl ketone (MIBK)  
11. Toluene  
12. n-Butyl acetate  
13. Ethylbenzene  
14. p-Xylene  
15. m-Xylene  
16. o-Xylene