

# InertSearch™ for LC

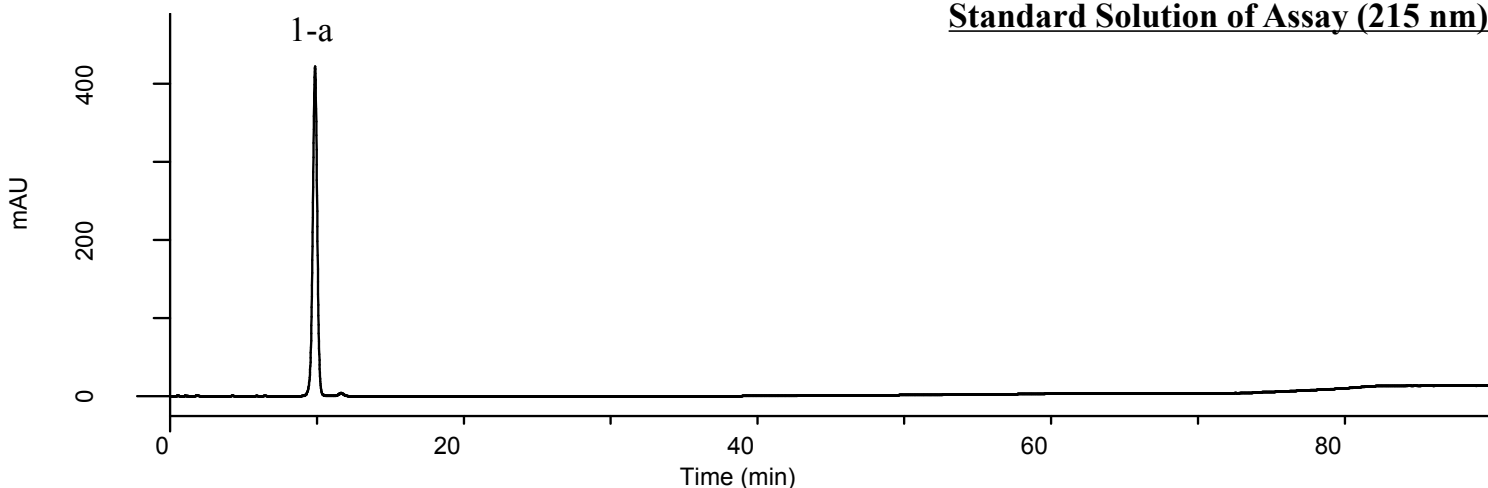
Inertsil™ Applications

## Analysis of Ezetimibe

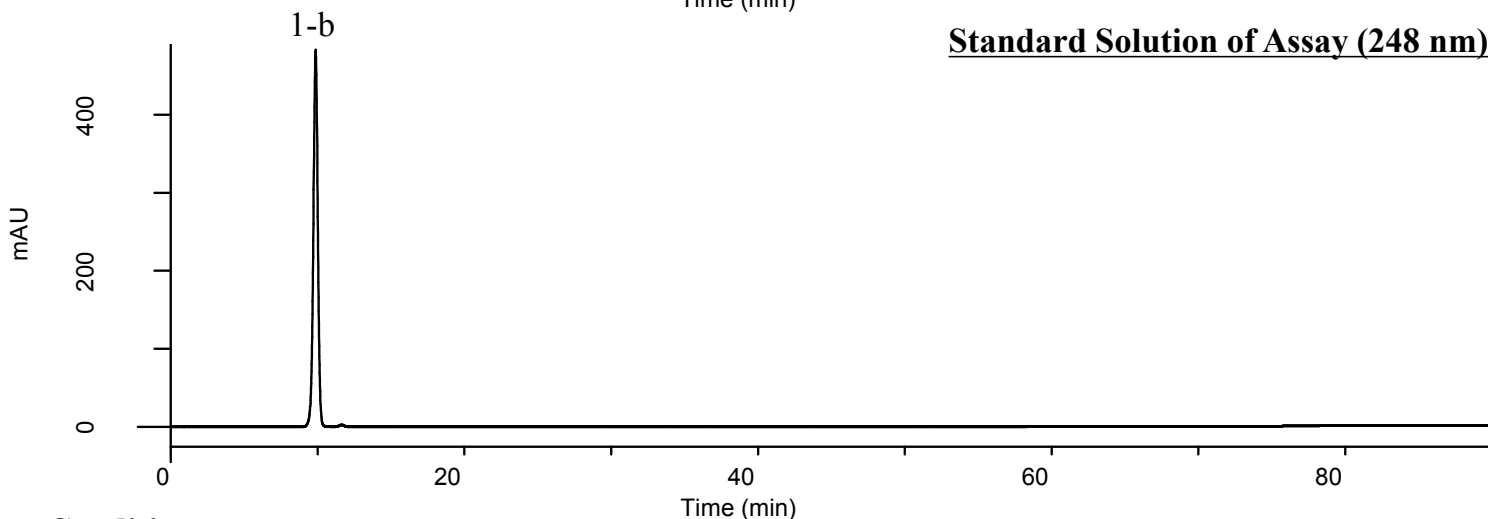
(Under the Condition of USP41-NF36, Ezetimibe)

Data No. LB549-0812

### Standard Solution of Assay (215 nm)



### Standard Solution of Assay (248 nm)



### Conditions

**System** : GL7700 HPLC system  
**Column** : InertSustain PFP (5  $\mu$  m, 150 x 4.6 mm I.D.)  
**Column Cat. No.** : 5020-87730  
**Eluent** : A) CH<sub>3</sub>CN  
          : B) CH<sub>3</sub>OH  
          : C) H<sub>2</sub>O

### **Analyte:**

1. Ezetimibe 250 mg/L

Symmetry factor (1-b) : 0.95 (< 1.5)  
RSD of the peak area of 1-b (%) (n=6) : 0.24 (< 0.73)

Time(min)	A(vol%)	B(vol%)	C(vol%)
0	27	10	63
37	27	10	63
60	50	10	40
70	50	10	40
80	80	10	10
90	80	10	10
90.1	27	10	63
100	27	10	63

**Flow rate** : 2.0 mL/min  
**Col. Temp.** : 40 °C  
**Detection** : UV 215 nm and 248 nm (PD7752 PDA Detector)  
**Injection Vol.** : 60  $\mu$  L  
**Sample** : Standard