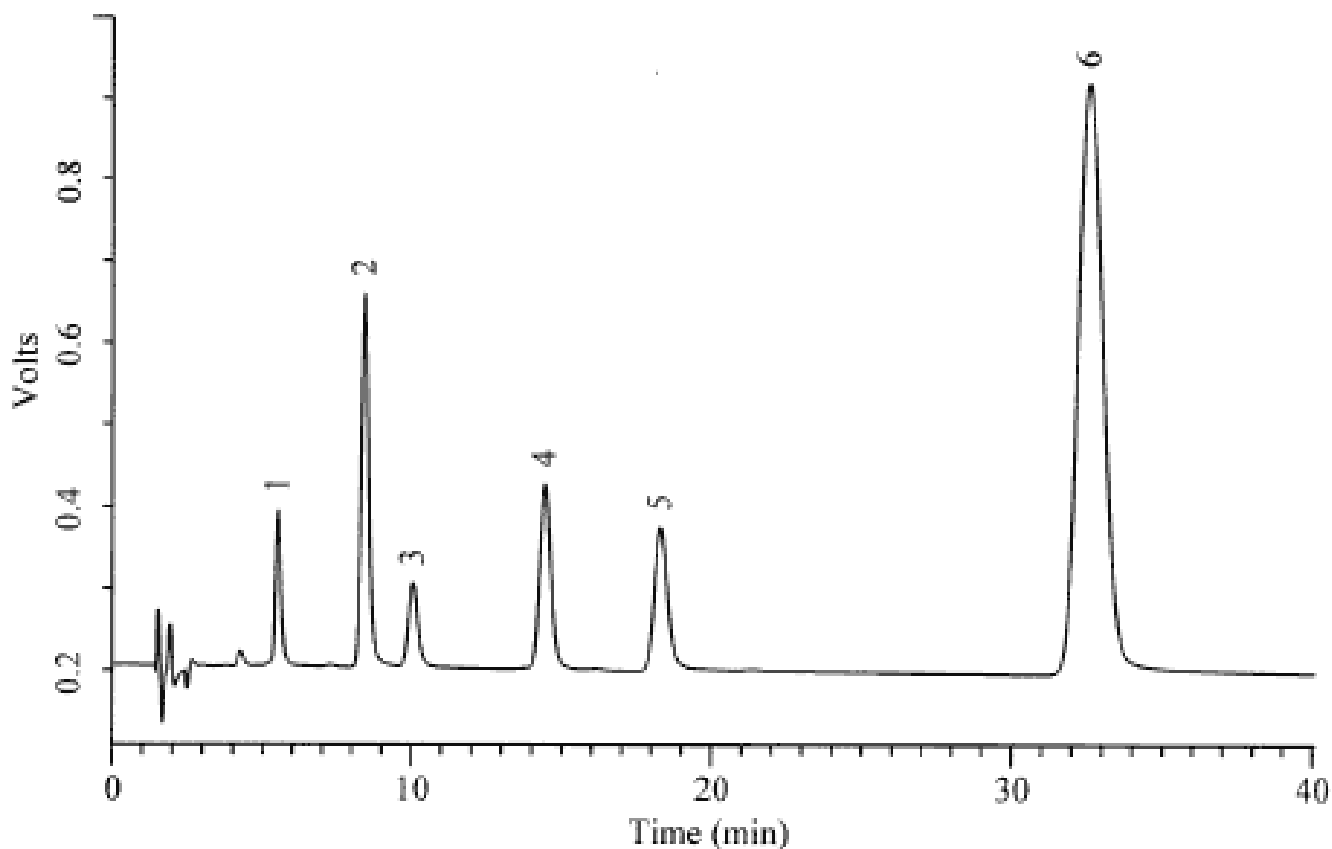


Analysis of Tryptophan

Data No. LA231-0000



Column	: Inertsil ODS-3 5µm 150 × 1.5mm I.D.	Solutes	: 1. Tryptophan (TRP) (10µg/mL) 2. Kynurenine (KYN) (10µg/mL) 3. 5-Hydroxytryptophan (5HTP) (1µg/mL) 4. 5-Hydroxytryptamine (Serotonin) (5HT) (1µg/mL) 5. 5-Hydroxyindoleacetic acid (5HIAA) (1µg/mL) 6. 3,4-Dihydroxybenzylamine Hydrobromide (DHBA) (1µg/mL)
Column Cat. No. :			
Eluent	: 50mM phosphoric acid, 50mM citric acid, 100mg/L SOS, 40mg/L EDTA (pH 3.0) / Methanol = 86/14		
Flow rate	: 0.1 mL/min.		
Col. Temp.	: 30°C		
Detection	: ECD 850mV vs. Ag/AgCl 1000nA/V		
Injection Vol.	: 5µL		
Sample	: Metabolites of Tryptophan		