

FIXATOR
SAFETY AT THE VERY TOP

**MANUFACTURER OF SUSPENDED CRADLES,
BOSUN CHAIRS, PLATFORMS AND HOISTS
FOR OVER 95 YEARS**



GENERAL CATALOGUE



**ELECTRIC, PNEUMATIC
& MANUAL
HOISTS**

PERSONNEL LIFTING



RANGE OF HOISTS

PERSONNEL LIFTING

Our temporary and permanent suspended platforms are equipped with our **electric, manual or pneumatic lifting hoists**.

These hoists have no working height limit, and have an electrical control box and fall-prevention safety locks systematically integrated into them. The tension is applied to the working cable, and safety is ensured by a second cable connected to a safety lock.

All our hoists comply with the **safety requirements specified in the regulations**: overspeed safety lock, overturn control system, anti-tilt safety system, roll-prevention system, slack rope detection system, emergency descent system, etc.



RANGE OF HOISTS

PERSONNEL LIFTING

Liftho Range

LIFTHO NEO hoists can be used in the Elevator and Industry sectors. They are mainly intended for skilled workers who carry out elevator shaft work. They can be installed at the top of the car, on the walls of the elevator shaft or in the elevator pit.

LIFTHO NEO are electric wire-rope hoists for lifting load capacities ranging from 600 to 1 000 kg.

They are available in single-phase or three-phase versions, depending on the model. You can double the load capacity by using a return pulley.

LIFTHO NEO hoists offer new features such as a time meter and overload function.



e.lift Range

Our e.lift hoists can be used in the building, industry and wind power sectors. They are mainly intended for skilled workers carrying out works on new buildings, facade restorations, insulation, curtain wall cleaning, atrium maintenance, as well as repairs to industrial installations such as storage tanks, shipyards, etc.

The e.lift range are electric wire-rope hoists for lifting personnel with a load capacity from 350 to 1 000 kg.

They are available in single-phase or three-phase versions, depending on the model. You can double the load capacity by using a return pulley.

Some models also offer new features such as a time meter and overload function.



ELEVATORS

ELECTRIC HOISTS

LIFTHO
600



LIFTHO
800



LIFTHO
1000



BUILDING / INDUSTRY & ENERGY / WIND POWER

MANUAL HOIST

m.lift 400



PNEUMATIC HOIST

p.lift 500



BUILDING / INDUSTRY & ENERGY / WIND POWER

ELECTRIC HOISTS

e.lift 350



e.lift 501



e.lift NEO 600



e.lift NEO 800



e.lift NEO 1000



e.lift NEO 1500 and 2200 lbs
(680 & 1000 kg)



ELECTRIC HOISTS

PERSONNEL LIFTING



ELEVATORS

INDUSTRY

LIFTHO NEO

PERSONNEL LIFTING | Wire rope electric hoist

✓ PRACTICALITY

- ✓ Adapts to any type of construction site (load lifting; people or equipment)
- ✓ No limitation of working height
- ✓ Possibility of doubling the load capacity by using a reeving kit/ double rope kit (optional)
- ✓ Equipped with a power supply for tools 220V -16 amps (drills, pneumatic drills, etc.)

✓ SAFETY

- ✓ Load limiter with audible warning
- ✓ Emergency descent lever
- ✓ Travel end stopper to halt ascents and/or descents
- ✓ Electromagnetic main brake
- ✓ Associated to our anti fall system: Securichute
- ✓ End stops up and out of travel up to stop the ascent

✓ COMFORT

- ✓ Time meter
- ✓ Built in function for exact weighing of the lifted load
- ✓ Robuste, compact and lightweight - with a aluminium outer casing to prevent corrosion
- ✓ Simplified maintenance thanks to its easily accessed mechanical part
- ✓ Portable and easy to handle: wheels and telescopic carry handles (optional)
- ✓ Pendant control or wireless remote control (optional) - interchangeable



Versatile and Universal

LIFTHO hoists are wire rope hoists for lifting loads with a capacity from 600 kg to 1000 kg.

LIFTHO hoists can be used worldwide in the Elevator and Industrial sectors. They are intended for skilled workers carrying out works inside lift shafts.

Robust and Efficient

Machined from a single piece, the outer casing of LIFTHO hoists is made from 100% aluminium. This makes them light, compact and corrosion-resistant. They are equipped with a thermal probe that protects the electric motor and stops the hoist in case of overheating.

For more information:

www.fixator.com



LIFTHO NEO

CE

PERSONNEL LIFTING | Wire rope electric hoist

PRODUCT FEATURES

Description	LIFTHO 600 M	LIFTHO 600 T	LIFTHO 800 M	LIFTHO 1000 T (*)
Working load / limit WLL (kg)	600		800	1000
Motor power (kW)	1.25		1.25	1.85
Voltage (V)	Single-phase - 220/240V - 50Hz/60Hz	Three-phase - 380/415V - 50Hz/60Hz	Single-phase - 230V - 50Hz/60Hz	Three-phase - 380/415V - 50Hz/60Hz
Operating speed (m/min)	9m/min - 50Hz 11m/min - 60Hz		7m/min	9m/min
Hoist weight (kg)	51		59	59
Wire rope diameter (mm)	Ø8.3 mm 5x19 or 6x17 or 5x26 with synthetic core		Ø9.5 - 5x19 or 5x26, galvanised steel with synthetic core	Ø10.3 - 5x19 or 10.2 - 5x26, with synthetic core
Travel end stopper	Yes		Yes	Yes

(*) Single-phase version also available

STANDARD EQUIPMENT

- 1 Pendant control (5m cable) with double insulation (IP65)
- 1 travel end stopper



pendant control

ACCESSORIES

- 1 Hook fixing kit (other possible solutions)
- 1 Wheels and telescopic carry handles
- 1 SECURICHUTE 600, 800 and 1000 anti-fall system
- 1 Extensions for pendant control (from 15 to 60 m)
- 1 Wireless remote control with double insulation, IP 65 (reach of 100 m)
- 1 Pulley block used to double the lifting capacity - Double rope kit (reeving kit)

EXTENSION
for Pendant controlSECURICHUTE
in version 600, 800 and 1000

DID YOU KNOW?

The first LIFTHO hoist was designed in the 1990s. It was originally only intended for the elevator sector.

Today, LIFTHO hoists are used on many types of work sites (lifting loads, personnel or equipment) in different fields of activity.

Their long service history and versatility are guarantees of quality for users.

Equipped with a NEO System module (on board electronics), LIFTHO hoists have a time meter and a function that determines the exact weights of the lifted load.

FIXATOR
SAFETY AT THE VERY TOP

8 rue du Bois Rinier - P.A. - BP 10041
49181 St-Barthélemy-d'Anjou Cedex
FRANCE

T. : + 33 (0) 241 311 700
Fax : + 33 (0) 241 311 705

Email : info@fixator.com
www.fixator.com



LIFTHO NEO ELEVATORS

TO PLAY THE VIDEO: (DOWNLOAD FLASH PLAYER)



FIXATOR
SAFETY AT THE VERY TOP



ELECTRIC HOISTS - e.lift

PERSONNEL LIFTING



e.lift 350

TEMPORARY PERSONNEL LIFTING | Wire rope electric hoist

CONVENIENCE

- ✓ No working height limit
- ✓ Adapts to any type of work site - ideal for permanent access

SAFETY

- ✓ Load limiter
- overload indicated by a red light on the control box
- ✓ Manual descent in case of power failure
- ✓ Motor protected by a temperature probe in case of overheating
- ✓ Fall-prevention and roll-prevention system (Securichute for overspeed/Securistop with roller)
- ✓ Tilt and overturn control system (Gyrostop) integrated into the control box
- ✓ Travel end stoppers to halt ascents (top end of stroke and out of top stroke)

COMFORT

- ✓ Easy maintenance
- ✓ Robust with tinted and shock-resistant polyamide casing
- ✓ Compact and lightweight



Machine directive 2006/42/CE
Quality Process complying with the ISO 9001:2015 standard



Versatile and All-purpose

e.lift 350 is an electric wire rope hoist used with suspended platforms for lifting people. Its maximum load capacity is 350 kg.

The e.lift 350 hoist can be used worldwide. It is mainly intended for skilled workers who carry out permanent works on facades.

Powerful and Robust

The e.lift 350 electric hoist has an aluminium chassis and is protected by tinted and shock-resistant polyamide casing that can be cleaned after use.

For more information :

www.fixator.com



e.lift 350

TEMPORARY PERSONNEL LIFTING | Wire rope electric hoist

PRODUCT FEATURES

Description	e.lift 350	
Working load limit - WLL (kg)	350	
Motor power (kW)	0.74	0.75
Voltage (V)	Three phase 380-415 V 3~	Single phase 220-240 V 1~
Rated current / start (A)	2.8 A	6 A
Hoist weight (kg)	35	37
Operating speed (m/s)	9m/min	
Emergency descent speed (m/min)	4.5 m/min	
Ø and type of wire-rope (mm)	Ø8.3 5 x 26 strands (other compositions available on request)	Ø8.3 6 x 17 strands (other compositions available on request)
Load limiter	Yes	
Top end of stroke	Yes	
Out of top stroke	Yes	

STANDARD EQUIPMENT (INCLUDED)

- ✓ Polyamide casing
- ✓ Anchor clamp
- ✓ Travel end stoppers (top end of stroke, out of top stroke)

ACCESSORIES (OPTIONS)

- ✓ Steel cables with hooks
- ✓ Fall-prevention system: Securichute for overspeed/ Securistop with roller



Securichute for overspeed type 518



Securistop with roller type 518



DID YOU KNOW ?

The safety of personnel and equipment is the No. 1 priority when working at heights.

In most European countries, the regulations require a periodic general inspection to be carried out on all motorised lifting devices that have been operating for 6 months on the same building. The installation must then be checked by an approved body.

FIXATOR recommends annual maintenance of all hoists, safety locks and electrical boxes.

FIXATOR and its network of repairers offer preventive maintenance services for the devices.

Proper equipment maintenance minimises the risk of breakdowns and reduces equipment repair and downtime costs.

Expert opinion :

« At ground level, wind up the cable for greater operating flexibility and to avoid damaging the hoist and cable. »



8 rue du Bois Rinier - P.A. - BP 10041
49181 St-Barthélemy-d'Anjou Cedex
FRANCE

T. : + 33 (0) 241 311 700

Fax : + 33 (0) 241 311 705

Email : info@fixator.com

www.fixator.com



e.lift 501

I TEMPORARY PERSONNEL LIFTING I Wire rope electric hoist

CONVENIENCE

- ✓ No working height limit
- ✓ Adapts to any type of work site

SAFETY

- ✓ Load limiter (overload indicated by a red light on the hoist)
- ✓ Manual descent in case of power failure
- ✓ Motor protected by a temperature probe in case of overheating
- ✓ Fall prevention and roll prevention system (Securichute (overspeed) / Securistop (anti-tilt))
- ✓ Tilt and overturn control system (Gyrostop) integrated into the control box (electrical box)
- ✓ Travel end stoppers to halt ascents (top end of stroke and out of top stroke)

COMFORT

- ✓ Robust, single unit casing made from aluminium to prevent corrosion
- ✓ Compact and lightweight
- ✓ Simplified maintenance - quick access to the mechanical part
- ✓ Protective cover



- 80 -



Versatile and All-purpose

e.lift 501 is an electric wire rope hoist used with suspended platforms for lifting people. Its maximum load capacity is 500 kg.

The e.lift 501 hoist can be used worldwide. It is mainly intended for skilled workers who carry out temporary works on facades.

Powerful and Robust

The single unit aluminium casing makes the hoists lightweight, compact and corrosion-resistant. Maintenance is simplified thanks to its easily accessed mechanical part.

For more information :

www.fixator.com



e.lift 501

I TEMPORARY PERSONNEL LIFTING I Wire rope electric hoist

PRODUCT FEATURES

Description	e.lift 501 T	e.lift 501 M
Working load limit - WLL (kg)	500	
Motor power (kW)	1,0	1,25
Voltage (V)	Three phase 380-415 V 3~	Single phase 220-240 V 1~
Rated current / start (A)	3/11	7/21
Hoist weight (kg)	43	
Dimensions (mm)	259x308x649	263x332x684
Operating temperature range (°C)	- 10°C // +55°C	
Operating speed (m/s)	0,16 (9,7 m/mn)	0,15 (9m/mn)
Emergency descent speed (m/s)	0,07 (4,5m/mn)	
Ø and type of wire-rope (mm)	Ø8.3 - 5x19 ou 6x17 ou 5x26, synthetic core steel	
Load limiter	yes, adjustable	
Top end of stroke	yes	
Out of top stroke	yes	

STANDARD EQUIPMENT

- I Protective cover
- I Anchor bracket
- I Travel end stoppers (top end of stroke, out of top stroke)



ACCESSORIES

- I Steel cables with hooks
- I Gyrostop control box
- I Fall-prevention system: Securichute / Securistop
- I Extensions for power cables (up to 200 m for three-phase hoists and up to 100 m for single-phase hoists)



DID YOU KNOW ?

The safety of personnel and equipment is the No. 1 priority when working at heights.

In most European countries, the regulations require a periodic general inspection to be carried out on all motorised lifting devices that have been operating for 6 months on the same building. The installation must then be checked by an approved body.

FIXATOR recommends annual maintenance of all hoists, safety locks and electrical boxes.

FIXATOR and its network of repairers offer preventive maintenance services for the devices.

Proper equipment maintenance minimises the risk of breakdowns and reduces equipment repair and downtime costs.

Expert opinion :

« At ground level, wind up the cable for greater operating flexibility and to avoid damaging the hoist and cable. »



8 rue du Bois Rimier - PA - BP 10041
49181 St-Barthélemy-d'Anjou Cedex
FRANCE

T.: + 33 (0) 241 311 700
Fax: + 33 (0) 241 311 705

Email: info@fixator.com
www.fixator.com



- 81 -

e.lift NEO

TEMPORARY PERSONNEL LIFTING | Wire rope electric hoist



NEO SYSTEM

Functions:

- exact weighing of the lifted load
- load limiter
- time meter

CONVENIENCE

- ✓ No working height limit
- ✓ Adapts to any type of work site

SAFETY

- ✓ Load limiter
- ✓ Manual descent in case of power failure
- ✓ Motor protected by a temperature probe in case of overheating
- ✓ Fall-prevention and roll-prevention system (Securichute/ Securistop)
- ✓ Tilt and overturn control system (Gyrostop) integrated into the control box (electrical box)
- ✓ Travel end stoppers to halt ascents (top end of stroke and out of

COMFORT

- ✓ Time meter
- ✓ Built in function for exact weighing of the lifted load
- ✓ Simple and quick overload pre-setting for adapting to the capacities of temporary platforms
- ✓ Robust, single unit casing made from aluminium to prevent corrosion
- ✓ Compact and lightweight
- ✓ Simplified maintenance - quick access to the mechanical part
- ✓ Protective cover (only for e.lift NEO 600)

Versatile and All purpose

e.lift NEO is an electric wire rope hoist used with suspended platforms for lifting people. Its load capacity is from 600 to 1,000 kg.

The e.lift NEO hoist can be used worldwide. It is mainly intended for skilled workers who carry out temporary works on facades.

Powerful and Robust

The e.lift NEO hoist offers new features such as exact weighing of the load to be lifted, overload adjustment and a time meter.

The single unit aluminium casing makes the hoists lightweight, compact and corrosion-resistant. Maintenance is simplified thanks to its easily accessed mechanical part.

For more information :

www.fixator.com



e.lift NEO

TEMPORARY PERSONNEL LIFTING | Wire rope electric hoist

PRODUCT FEATURES

Description	e.lift 600 T	e.lift 600 M	e.lift 800 T	e.lift 1000 T
Working load limit - WLL (kg)	600		800	1000
Motor power (kW)	1.25		1.85	
Voltage (V)	Three phase 380-415 V 3~	Single phase 220-240 V 1~	Three phase 380/415V 3~ 50/60Hz	Three phase 380/415V 3~ 50/60Hz
Rated current / start (A)	50Hz (3.5/14) 60Hz (3.8/15)	50Hz (8/21) 60Hz (9.2/25)	5/20	6/20
Hoist weight (kg)	41	42	58	
Dimensions (mm)	244x315x469 (544)	251x332x507 (582)	268x338x549	
Operating speed (m/s)	0.15 (9m/mn) - 50Hz 0.18 (11m/mn) - 60Hz		0.15 (9m/mn) - 50Hz 0.18 (10.7m/mn) - 60Hz	
Emergency descent speed (m/s)	0.07 (4.5m/mn)			
Ø and Type of wire-rope (mm)	Ø8.3 5x19 or 6x17 ou 5x26, synthetic core steel		Ø9.5 - 5x19 ou 5x26, synthetic core steel	Ø10.3 - 5x19 or 10.2 - 5x26, synthetic core steel
Load limiter	yes, adjustable			
Time meter	Yes			
Top end of stroke	Yes			
Out of top stroke	Yes			



DID YOU KNOW ?

The safety of personnel and equipment is the No. 1 priority when working at heights.

In most European countries, the regulations require a periodic general inspection to be carried out on all motorised lifting devices that have been operating for 6 months on the same building. The installation must then be checked by an approved body.

FIXATOR recommends annual maintenance of all hoists, safety locks and electrical boxes. FIXATOR and its network of repairers offer preventive maintenance services for the devices. Proper equipment maintenance minimises the risk of breakdowns and reduces equipment repair and downtime costs.

Expert opinion :

« At ground level, wind up the cable for greater operating flexibility and to avoid damaging the hoist and cable. »

STANDARD EQUIPMENT

- ✓ Protective cover (only for e.lift NEO 600)
- ✓ Anchor clamp
- ✓ Travel end stoppers (top end of stroke, out of top stroke)



Protective cover

ACCESSORIES

- ✓ Steel cables with hooks
- ✓ Gyrostop control box
- ✓ Fall-prevention system: Securichute / Securistop with roller
- ✓ Extensions for power cables (up to 200 m for three-phase hoists and up to 100 m for single-phase hoists)



Securichute

GYROSTOP

e.lift NEO

TEMPORARY PERSONNEL LIFTING | Wire rope electric hoist

VERSATILITY

- Can be used on a variety of job sites
- Unlimited working height

SAFETY

- Electronic Overload switch - N.E.O System Display indicates load
- Obstacle switch during descent
- Overspeed safety device - Securichute
- Slackrope / anti-till safety device - Securistop - Optional 2nd wire-rope
- Easy & fast maintenance (top stroke)

COMFORT

- Hour meter - N.E.O System
- Voltage indicator
- Compact & light
- Easy to transport
- Carrying handles



Functions:
- exact weighing of the lifted load
- load limiter
- hour meter

Versatile and All purpose

e.lift NEO is an electric wire rope hoist used with suspended platforms for lifting people.

Its load capacity is from 1500 to 2200 lbs (from 680 to 1000 Kg).

Powerful and Robust

The e.lift NEO hoist offers new features such as exact weighing of the load to be lifted, overload adjustment and a time meter.

The single unit aluminium casing makes the hoists lightweight, compact and corrosion-resistant. Maintenance is simplified thanks to its easily accessed mechanical part.

For more information :

www.fixator.com



e.lift NEO

TEMPORARY PERSONNEL LIFTING | Wire rope electric hoist



PRODUCT FEATURES

Technical Feature	527 A	527 C
Load Capacity (lbs/kg)	2200/1000	1500/680
Product conforms to the standard	UL	UL & CSA
Operating speed	30ft/min (9m/min - 0.15m/s)	
Dimension (mm)	31.1"/16.1"/11.5" (789x408x291 mm)	
Voltage	208 V - 3 ~ 60Hz	
Motor Power	2.5 hp / 1.85 kW	
Wire rope diameter	3/8" (9.5 mm) - 5x19 or 5x26	
Temperature for use	14°F / 131°F (-10°C/+55°C)	
Weight (lbs/kg)	160/73	
Load limiter	Yes, adjustable	
Securistop 2nd wire rope	Optional	

STANDARD EQUIPMENT

- Anchorage hook
- Travel end stoppers (top end of stroke, out of top stroke)

ACCESSORIES

- Steel cables with hooks
- Fall-prevention system: Securichute / Securistop slackrope fall-Arrest safety device
- Transport wheels and handle



8 rue du Bois Rimier - PA - BP 10041
49181 St-Barthélemy-d'Anjou Cedex
FRANCE

T.: + 33 (0) 241 311 700

Fax: + 33 (0) 241 311 705

Email: info@fixator.com

www.fixator.com



MANUAL HOIST- m.lift



BUILDING

INDUSTRY

m.lift 400

TEMPORARY PERSONNEL LIFTING | Wire rope manual hoist

m.lift 400 is a manual wire rope hoist used with a suspended platform, cradle and bosun chair for lifting people.

Its maximum load capacity is 400 kg.

The m.lift 400 hoist can be used worldwide. It is mainly intended for skilled workers who carry out temporary works on façades or structures.

CONVENIENCE

- Adapts to any type of work site, platforms, cradles and and bosun chair
- Recommended working height up to 30 metres

SAFETY

- Automatic braking system
- Snap action jaw socket in case of load cancellation (slack wire rope cable)
- Anti fall and anti roll safety system

COMFORT

- Automatic installation of the 2 cables (work and safety)
- Compact and lightweight



CE



Description	m.lift 400
Working load limit - WLL (kg)	400
Hoist weight (kg)	10
Average speed (m/min)	3,8 m/min
Crank handle radius (mm)	265
Force on each crank at 250 kg	8,5 kg
Ø and type of wire-rope (mm)	Ø8.3 - 6x17 synthetic core steel

For more information :
www.fixator.com



Version available in stainless steel for marine environment (please, consult us)



FIXATOR
SAFETY AT THE VERY TOP

PNEUMATIC HOIST - p.lift

PERSONNEL LIFTING



BUILDING

INDUSTRY

p.lift 500

TEMPORARY PERSONNEL LIFTING | Wire rope pneumatic hoist

p.lift 500 is a wire rope pneumatic hoist, associated with suspended platforms or cradles, allowing the lifting of people.

Its maximum load capacity is 500 kg.

The hoist p.lift 500 can be used worldwide. It is powered by compressed air with a power of 6 bar and an air flow rate of 1.4 m³/min.



Machine directive 2006/42/CE
Quality Process complying with the ISO 9001:2015 standard

CE

CONVENIENCE

- ✓ No working height limit
- ✓ Adapts to any type of work site, platform and cradles - ideal for work in a confined atmosphere (silos, tanks, etc.)

SAFETY

- ✓ Load limiter
- ✓ Air lacking main brake system
- ✓ Manual lowering in case of power failure
- ✓ Anti-fall and anti-roll safety system (Overspeed SECURICHUTE or roller SECURISTOP)
- ✓ Travel end stopper (Top end of stroke)
- ✓ Emergency stop punch
- ✓ Express connection on the motor

Description	p.lift 500
Working load limit WLL (kg)	500
Hoist weight (kg)	41
Lifting speed (m/min)	9 m/min
Motor power (kW)	0,8
Operating pressure	6 bar
Air flow rate (m ³ /min)	1,4
Emergency descent (m/min)	4,5
Cable characteristics (mm)	8,3 in steel mixed core
Breaking load (kg)	5100
Coefficient of safety	10.2

For more information :
www.fixator.com



FIXATOR
SAFETY AT THE VERY TOP



SAFETY DEVICES - PERSONNEL LIFTING

SECURICHUTE - SECURISTOP

Electric hoists designed for lifting personnel on temporary suspended platforms, cradles or bosun chairs must be fitted with a fall-prevention system.

FIXATOR provides two safety devices (fall-prevention systems) for protecting personnel:

- **Securichute** (overspeed) will activate in the event of overspeed (> 30m/min) and if the platform is tilted;
- **Securistop** will activate if the platform is tilted > 14° or if there is no tension in the wire-rope (slack rope).

If the platform suddenly drops downwards or experiences an excessively abnormal tilt, our fall-prevention systems will activate and prevent the drop or tilt.

Our overspeed device has an emergency stop button and can be operated manually.

The load capacities of our safety devices are 600, 800 and 1000 kg.

Our fall-prevention systems are fully compliant with the safety requirements of the European Machinery Directive No. 2006/42/CE.

✓ SECURICHUTE



✓ SECURISTOP



The fall-prevention device is positioned on the hoist or on the platform end-stirrup:

✓ FALL-PREVENTION DEVICE positioned on a stirrup



✓ FALL-PREVENTION DEVICE positioned on a stirrup



SAFETY DEVICES - PERSONNEL LIFTING

FALL-PREVENTION SYSTEM

SECURICHUTE 600 / 800 / 1000 (TYPE 526)

Our fall-prevention systems are designed to protect personnel using our suspended platforms. They are activated by means of centrifugal weights in the event of overspeed, sudden acceleration or tilting of the platform (limited to 14°)



3 models are available: SECURICHUTE 600, 800 and 1000

CONVENIENT

- ✓ Automatic wire-rope routing
- ✓ No Working height limit
- ✓ Light and ergonomic
- ✓ Easy to use
- ✓ Steel design

SAFETY

- ✓ Acceleration
- ✓ Activates in case of overspeed > 30m/min
- ✓ Activates in case of tilting > 14°
- ✓ Emergency stop button
- ✓ Manual reset

Our overspeed device has an emergency stop button and can be operated manually.

A SECURICHUTE device can be assembled in several ways:

- On a hoist or on multiple hoists (if using a platform);
- On a c-stirrup



Assembled on a hoist



Assembled on a c-stirrup

SAFETY DEVICES - PERSONNEL LIFTING

FALL-PREVENTION SYSTEM

SECURICHUTE 600 / 800 / 1000 (TYPE 526)

TECHNICAL SPECIFICATIONS - SECURICHUTE TYPE 526

Each type of fall-prevention is specified on the product to indicate the diameter of the steel wire-rope to be used:

Description	Securichute 600	Securichute 800	Securichute 1000
Type	526200 and 526200A	526300	526400 and 526400A
Working load limit - WLL (kg)	600	800	1000
Weight (kg)	7		
Dimensions (mm)	253x180x95		
Working temperature range	-10°C // +55°C		
Ø and type of wire-rope	Ø8.3 5x19 ou 6x17 ou 5x26, with synthetic core	Ø9.5 5x19 ou 5x26 with synthetic core	Ø10.2 5x19 ou 5x26 with synthetic core
Activation speed (m/s)	> 0.5		
Min. wire-rope breaking load (kg)	4800	6400	8000
Assembled on hoists	e.lift 501, e.lift 600, p.lift 500, Liftho 600	e.lift 800 Liftho 800	e.lift 1000 Liftho1000



SAFETY DEVICES - PERSONNEL LIFTING FALL-PREVENTION SYSTEM



SECURISTOP 600 / 800 (TYPE 518 AND 526)

Our fall-prevention systems are designed to protect personnel using our suspended platforms. They will activate if the platform is tilted (limited to 14°) or if there is no tension in the working wire-ropes (slack rope).

✓ Securistop (type 518)



✓ Securistop (type 526)



COMFORT

- ✓ Automatic wire-ropes routing
- ✓ No working height limit
- ✓ Light and ergonomic
- ✓ Easy to use
- ✓ Steel design

SAFETY

- ✓ Activates in case of tilting > 14°
- ✓ Activates if there is no tension in the working wire-ropes

A SECURISTOP device can be assembled in several ways:

- On a hoist or on multiple hoists (if using a platform);
- On a stirrup



Assembled on a hoist



Assembled on a stirrup

SAFETY DEVICES - PERSONNEL LIFTING FALL-PREVENTION SYSTEM

SECURISTOP 600 / 800 (TYPE 518 AND 526)

TECHNICAL SPECIFICATIONS - SECURISTOP 600 ET 800

Each type of fall-prevention is specified on the product to indicate the diameter of the steel wire-ropes to be used:

Description	Securistop 600		Securistop 800
	518600	526450	518800
Type			
Working load limit - WLL (kg)	600		800
Weight (kg)	4	7	4
Dimensions (mm)	250x183x76	323x160x81	250x183x76
Working temperature range	-10°C // +55°C		
Ø and type of wire-ropes	Ø8.3 5x19 ou 6x17 or 5x26 with synthetic core		Ø9.5 5x19, strands, with synthetic core
Min. wire-ropes breaking load (kg)	4800		6400
Assembled	On a clamp	On e.lift 501 and e.lift 600 hoists	On a clamp

EXPERT OPINION: BEST PRACTICES

For temporary platforms, it is essential to check:

- The proper functioning of the mechanisms and emergency stop on a daily basis;
- The condition of wire-ropes, attachments and structural elements on a regular basis;
- The safety of the suspension structure, and in particular that no counterweight has been removed;
- The perpendicularity of the platform with the suspension system;
- That there is no accumulation of snow, ice, litter or materials on the platform;
- That there are no obstacles on the facade at the end of work, and the platform is rendered "out of service";
- That your equipment is stable.

BOXES FOR e.lift - PERSONNEL LIFTING

TEMPORARY ELECTRICAL CONTROL BOXES



Equipped with a GYROSTOP device to limit tilting of the platform

Electrical control boxes are designed to control the modes of operation of electric hoists for lifting personnel. They can control one or more hoists. They are available in single-phase or three-phase version EN 1808.

The boxes also vary when used with a suspended platform, an individual cradle or a bosun chair.

Control boxes are equipped with a device to limit tilting of the platform. It is also possible to carry out manual rebalancing.



GYROSTOP SYSTEM (tilt and overturn control)

The GYROSTOP system integrated into the control box ensures that:

- The power supply of the hoist is cut off and the hoist is automatically levelled as soon as the tilt exceeds 6°;
- The power supply of the hoists is cut off as soon as the tilt exceeds 10°;
- The power supply of the two hoists is cut off if the tilt of the platform exceeds 20°;
- Power supply cut-offs caused by spurious movements are eliminated;
- The roll-prevention system will not malfunction in the event of a cabinet impact.

Electrical control boxes:

- Type 3760: 24 V control with lockable switch

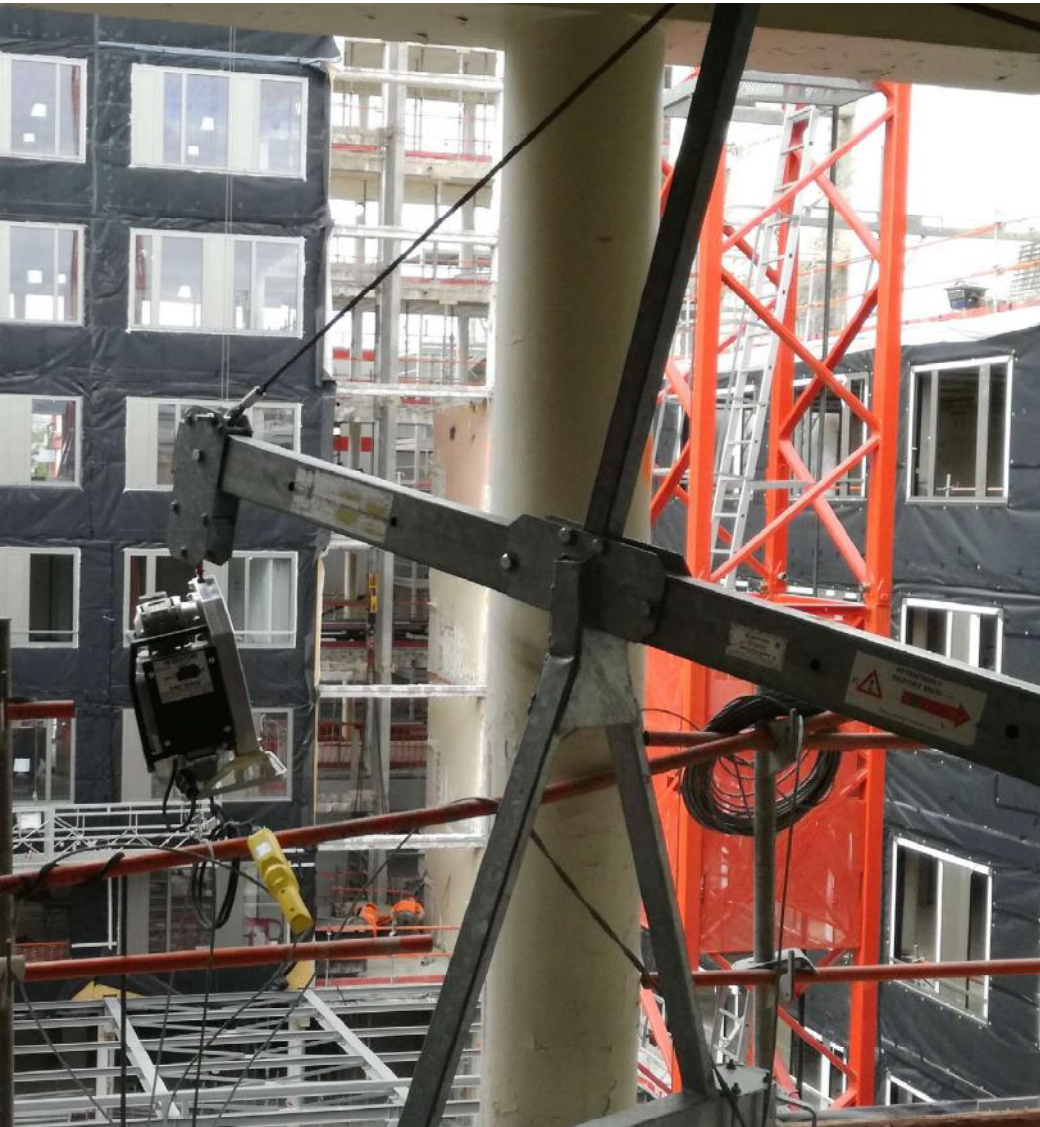
BOXES FOR e.lift - PERSONNEL LIFTING

TEMPORARY ELECTRICAL CONTROL BOXES

TECHNICAL SPECIFICATIONS - BOX TYPE 3760

CONTROL BOXES						
Type	3760					
Compatible hoists	e.lift 501, e.lift 600, e.lift 800 et e.lift 1000					
Access system	Bosun chair / Cradle		Platform		Special platform	
Control	For 1 hoist		For 2 hoists		Multiple hoists	
Voltage	230V	400V	230V	400V	230V	400V
	50Hz/60Hz	50Hz/60Hz	50Hz/60Hz	50Hz/60Hz	50Hz/60Hz	50Hz/60Hz
Product	M1	T1	M2	T2	M3, M4, etc.	T3, T4, etc.
Roll-prevention	-	-	x		x	
Levelling	-	-	Manual and automatic		Manual	
Lockable selector	-	-	x		x	
Emergency stop	x	x	x		x	
24V control	x	x	x		x	
230V socket for tools	x	x	x		x	
Push-button box	x	x	x		x	
EN 1808 compliant	x	x	x		x	





ELECTRIC AND MANUAL HOISTS

EQUIPMENT LIFTING

RANGE OF HOISTS

EQUIPMENT LIFTING

FIXATOR offers a wide range of hoists for lifting equipment with load capacities ranging from 90 to 1500 kg.

Our hoists can be used at any type of work site (construction, renovation, installing elevator shafts, lifting the guide rails and counterweights of elevator cars, etc.), and have no working height limit.

FIXATOR also offers lifting solutions to the entertainment and sports sectors for lowering and raising basketball backboards in sports halls and handling awnings.



HOISTS EQUIPMENT LIFTING

BUILDING / INDUSTRY & ENERGY / WIND POWER / ELEVATORS

ELECTRIC HOISTS

LM 90



LM 250



LM 300S+



LM 500+



MOTRIX 750



MOTRIX 1000



MOTRIX 1500



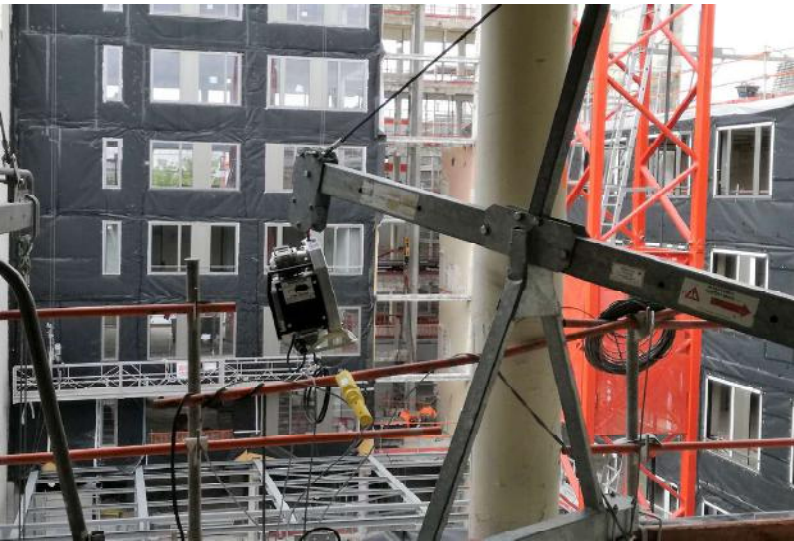
ENTERTAINMENT AND SPORTS

MANUAL AND ELECTRIC HOISTS

MANUAL HOIST CRANK
GEAR



BASKETBALL HOIST



ELECTRIC HOISTS

EQUIPMENT LIFTING - LM



BUILDING

INDUSTRY

ELEVATORS

WIND POWER

Machine directive 2006/42/CE
Quality Process complying with the
ISO 9001:2015 standard

CE

LM 90 - LM 250

MATERIAL LIFTING | Wire rope electric hoist

CONVENIENCE

- Adapts to all construction sites
- No limitation of working height
- Compatible with a household electrical outlet
- Possibility of doubling the load capacity by using a reeving kit (double rope kit) - *(on option)*

SAFETY

- Two travel end stoppers to halt ascents and/or descents
- Electric motor protected by a temperature probe in case of overheating

COMFORT

- Portable and easy to handle (storage box supplied with the hoist)
- Compact and lightweight
- Pendant control or Wireless Remote Control *(depending on the version)*



Versatile and Universal

The LM passing wire rope hoist enables to lift equipment with a load capacity of 90 kg and 250 kg.

The LM hoist can be used on all types of work sites, in the worldwide; in the building sector for hoisting and hauling equipment, in the elevator sector for the transport of equipment inside the shafts, in the wind energy sector for maintenance works.

Sturdy and Efficient

Machined in the mass, the LM hoist is made up of a 100% aluminum outer walls. This makes it lightweight, compact, as well as resistant to corrosion. It is equipped with a temperature probe that protects the electric motor and stops the hoist in case of overheating.

For more information:

www.fixator.com



BUILDING

INDUSTRY

ELEVATORS

WIND POWER

Machine directive 2006/42/CE
Quality Process complying with the
ISO 9001:2015 standard

CE

LM 90 - LM 250

MATERIAL LIFTING | Wire rope electric hoist

TECHNICAL SPECIFICATIONS

Description	LM 90	LM 250
Max. Direct Working Load/WLL (kg)	90	250
Max. Reeved Working Load/WLL (kg)	180	500
Motor power (kW)	0,45	0,45
Voltage (V)	Single phase 230 V - 50Hz - 3.5 A	Single phase 230 V - 50Hz - 3.5 A
Climbing speed (m/min)	17	6
Hoist weight (kg)	19	19
Cable diameter (mm)	5	5
Upper travel end stopper	yes	
Lower travel end stopper	yes	

STANDARD EQUIPMENT

- Storage box
- Pendant control (2.5m of wire)
- Suspension hook
- 2 travel end stoppers (upper and lower)



ACCESSORIES

- Wireless Remote control
- Double rope kit (reeving kit)
- Extension for pendant control (from 5 to 60m)



8 rue du Bois Rimier - PA. - BP 10041
49181 St-Barthélemy-d'Anjou Cedex
FRANCE

T.: + 33 (0) 241 311 700
Fax: + 33 (0) 241 311 705

Email: info@fixator.com
www.fixator.com



LM 300S+ ET 500+

MATERIAL LIFTING | Wire rope electric hoist



Wireless remote control, an option

CONVENIENCE

- Adapts to all construction sites
- No limitation of working height
- Equipped with a stand for use through floor openings (optional)
- Possibility of doubling the load capacity by using a reeving kit/ double rope kit (optional)
- Easy maintenance

SAFETY

- Motor protected by thermal fuse
- Two travel end stoppers to halt ascents and/or descents

COMFORT

- Portable and easy to handle: Storage box (optional) and carrying handles
- Compact and light weight
- Robust - billet aluminium casing to prevent corrosion
- Pendant control or Wireless remote control (optional) - interchangeable

Multi-functional and Universal

The LM hoist is a wire rope hoist for lifting equipment with a load capacity of 300 kg and 500 kg.

The LM hoist can be used anywhere in the world; in the Lift manufacturing sector for the transport of equipment inside shafts, in the Building sector for lifting and hauling equipment, in the Wind power sector for maintenance work.

Robust and Efficient

The billet aluminium casing makes the hoist light, compact and corrosion-resistant. Two limit switch stops (IP 65-Resistance to water and dust) stop the raising or lowering to prevent the cable from being removed from the hoist. Its maintenance is simplified thanks to easy access to the mechanical part.

For more information:
www.fixator.com



LM 300S+ ET 500+

MATERIAL LIFTING | Wire rope electric hoist



Stand for use through floor openings

DID YOU KNOW ?

New Generation Hoists

The "New Generation" LM 300S+ and LM 500+ were designed to simplify use by the customer. More ergonomic and sturdier, they are equipped with a billet aluminium casing, enabling them to be less vulnerable to impacts and to minimise the risks of damage over time.

Simplicity & Convenience

The LM 300S+ and LM 500+ hoists can be equipped with a wireless remote control, in place of the pendant control. Swapping with the latter is easy due to the electrical socket pre-installed on the hoists. The wireless remote control offers a whole new level of working comfort. In fact, the equipment lifting is carried out with more autonomy and less clutter of cables and cable extensions on the work site

PRODUCT FEATURES

Description	LM 300S+	LM 500+
Direct Working Load Limit WLL (kg)	300	500
Max. Reeved Working Load/ WLL (kg)	600	990
Motor power (kW)	1,1	1,1
Voltage (V)	Single phase 230V - 50/60Hz	Single phase 230V - 50/60Hz (110V - 50/60Hz available)
Rated/starting current (A)	50Hz = 7/21A 60Hz = 9/21A	50Hz = 7/21A 60Hz = 9/21A
Hoist weight (kg)	32	32
Dimensions (mm)	255x240x809	255x240x809
Operating temperature (°C)	-10°C/ +55°C*	-10°C/ +55°C*
Operating speed (m/min)	50Hz = 14m/min 60Hz = 15m/min	50Hz = 7m/min 60Hz = 8m/min
Ø and type of wire-rope	from 6.5 to 6.8 - 6x19 Mixed core galvanised	from 6.5 to 6.8 - 6x19 Mixed core galvanised
Upper travel end stopper		Yes
Lower travel end stopper		Yes

STANDARD EQUIPEMENT

- Pendant Control (2,5m of wire) with double insulation with IP 65
- Suspension hook
- 2 travel ends stopper (upper and lower)



ACCESSOIRES

- Storage Box
- Extension for pendant control (from 5 to 60 m)
- Wireless Remote control with double insulation IP 65 (reach of 100 m)
- Double rope kit (reeving kit) used to double the lifting capacity



8 rue du Bois Rinier - PA - BP 10041
49181 St-Barthélemy-d'Anjou Cedex
FRANCE

T. : +33 (0) 241 311 700
Fax : +33 (0) 241 311 705

Email : info@fixator.com
www.fixator.com



ACCESSORIES

LM 300S+ ET 500+

I MATERIAL LIFTING | Wire rope electric hoist



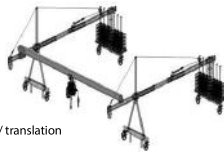
BRACKET

Capacity: 500 kg at 7 m/min or 300 kg at 14 m/min
 Weight: 33 kg
 Offset: 606 mm
 Minimum/maximum temperature: -10°C/+50°C
 Tube support: Ø48 mm
 Rotation: 180°
 2 handles



Trolley for material lifting with the hoists LM and Motrix

Capacity: 500 kg or 1000 kg
 Weight (trolley only): 17 kg
 Speed: 10m/min
 IPN: -76 to 127 mm
 Power: 230V - 50Hz



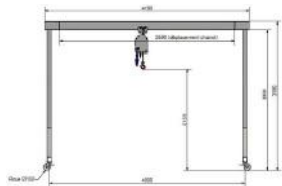
Remote control of the hoist and trolley enables to carry out the movements of ascent / descent / translation



REWINDER

Capacity: 120 metres of steel cable Ø6.8mm
 Weight (empty): 27 kg (including counterweight)

Cable end switch
 Requires 2 attachment points



Lifting gantry 500 Kg with hoist LM 500+

Range 3.5m - HSF 3m
 Weight of the gantry: 240 kg
 Useful height (under hook): 2.15 m
 Ø150 polyurethane wheels, 2 of which have brakes
 Finish: yellow polyurethane paint



ELECTRIC HOISTS

EQUIPMENT LIFTING - MOTRIX



MOTRIX 750, 1000 ET 1500

└ MATERIAL LIFTING ─ Wire rope electric hoist



CONVENIENCE

- ✔ Adapts to any type of work site
- ✔ No working height limit

SAFETY

- ✔ Integrated overload function
- ✔ Electric motor protected by thermal probe in case of overheating
- ✔ Power-on indicator light
- ✔ Two travel end stoppers to halt ascents and/or descents
- ✔ Manual brake release in case of electrical failure

COMFORT

- ✔ Simplified maintenance – Optimised adhesion system to facilitate opening the hoist
- ✔ Control by interchangeable push-button box or remote radio-control (optional)
- ✔ Telescopic carry handles and wheels (optional)

Versatile and practical

MOTRIX hoists are wire-rope hoists for lifting and traction of equipment with a load capacity of 750kg to 1500 kg and no working height limit.

MOTRIX hoists can be used worldwide in the Building and Industrial sectors for lifting equipment, or in the Elevator sector for cage transportation inside lift shafts.

Sturdy and efficient

The hoist has single-unit casing made from aluminium, which makes it light, compact and corrosion-resistant. Maintenance is simplified thanks to its easily accessed mechanical part.

For more information:
www.fixator.com



MOTRIX 750, 1000 ET 1500

└ MATERIAL LIFTING ─ Wire rope electric hoist

TECHNICAL SPECIFICATIONS

Description	MOTRIX 750	MOTRIX 1000	MOTRIX 1500
Max. Working Load/WLL (kg)	750	990	1500
Motor power (kW)	1.25	1.85	
Voltage (V)	Three-phase 380-415V-50 Hz	Three-phase 380-415V-50/60Hz	
Rated current / start (A)	4/15A	6 / 20A	
Hoist weight (kg)	50	64	
Dimensions (mm)	273x364x672	291x401x718	
Operating temperature (°C)	-10°C / +55°C*		
Operating speed (m/min)	9m/min	50Hz =9m/min 60Hz =10.8m/min	50Hz =5.5/min 60Hz =6.6m/min
Ø and type of wire-rope	Ø8.3 - 5x19 or 5x26 galvanised steel with mixed core	Ø9.5 - 5x19 or 5x26 galvanised steel with mixed core	Ø10.3 - 4xK19 or 9xK16 galvanised steel with mixed core
Upper travel end stopper	Yes		
Lower travel end stopper	Yes		
Overload function	yes	yes	yes

STANDARD PRODUCT

- └ Pendant control (2.5m of wire) with double insulation (IP65)
- └ Suspension hook
- └ 2 end stops (upper and lower)
- └ Overload by measuring current consumption



ACCESSORIES

- └ Wireless Remote control with double insulation, IP65 and IP66, (reach of 100 m)
- └ Sheaving/reeving kit
- └ Extension for pendant control (from 5 to 60 m)
- └ Telescopic carry handles and wheels



DID YOU KNOW ?

New-Generation Hoists

The «New-Generation Hoist» were designed with the aim of simplifying our customers' usage. More ergonomic and efficient, they are equipped with:

- An adhesion system to facilitate opening the hoist during maintenance work, which saves considerable time;
- Single-unit casing made from aluminium, which optimises their robustness and, consequently, their service life.

Simplicity & Practicality

The MOTRIX hoists can be equipped with a wireless remote -control to substitute the pendant control. Swapping out the latter is easy thanks to electrical socket pre-installed on the hoists. The radio-control offers a whole new level of working convenience. In fact, the lifting of material is carried out with more autonomy (range of reach: 100 meters) and less congestion of cables and extension cables on the work site.



MANUAL HOIST CRANK GEAR

1 MATERIAL LIFTING | Manual crank hoist



The geared crank manual hoist is commonly used in sports halls for manual lifting of basketball boards and handling of awnings.

Its maximum load capacity ranges from 60 to 300 kg

COMFORT

- ✓ Five models available with a maximum load capacity ranging from 60 to 300 kg
- ✓ Easy maintenance ,1 annual inspection
- ✓ Detachable crank handle
- ✓ Sturdy, zinc-plated steel finish

SAFETY

- ✓ Equipped with an automatic brake
- ✓ Automatically irreversible in both directions of rotation
- ✓ Ratchet free

TECHNICAL SPECIFICATIONS

Description	3060	3120	3121	3200	3300
Rated load (kg)	60	120	300	200	300
Force on first layer (kg)	100	200	500	300	500
Force on last layer (kg)	60	120	300	200	300
Weight (kg)	6,6	7,1	8	7,1	8,2
Gearing Ratio coefficient	1,8	4,1	4,1	6,1	10,2
Average lift per crank revolution (mm)	160	70	60	50	30

WINDING CAPACITY

Description	3060	3120	3121	3200	3300
Cable Ø 3,15 mm	52 m	52 m	-	-	-
Cable Ø 4 mm	32 m	32 m	-	-	-
Cable Ø 4,5 mm	25 m	25 m	29 m	20 m	20 m
Cable Ø 5 mm	20 m	20 m	-	16 m	16 m
Cable Ø 5,4 mm	17 m	17 m	-	14 m	14 m
Cable Ø 6,3 mm	13 m	13 m	-	10 m	10 m



BASKETBALL HOIST

1 EQUIPMENT LIFTING | Basketball Hoist



Robust and Efficient

The basketball hoist is a manually disengaged electric hoist for lifting and lowering basketball boards in the gym. Its maximum load capacity is 300 kg. The basketball hoist is available in a radio-controlled version (optional) to remotely control the lowering and raising of the basketball boards.

COMFORT

- ✓ 2 models available; key-operated or wireless remote control (optional) - The radio control has a transmitter and a receiver. Communication between the two is via radio wave with personalised coding. The radio link is momentary and is only active when the transmitter button is pressed.
- ✓ Simplified maintenance - easy access to spare parts thanks to the motor located outside the tubular part
- ✓ Suitable for increasingly heavy retractable basketball panels that require a powerful

SAFETY

- ✓ Manually disengageable motor (in case of power failure) - Release the brake and lower the load by lifting the lever and turning the steering wheel.
- ✓ 2 travel ends stopper (upper and lower)

Description	Basketball hoist - type 180
Motor power (kW)	0,75
Voltage (V)	Single-phase 230V - 50 Hz
Max. load capacity (kg)	300
Intensity (A)	7
Weight hoist (kg)	31
Operating temperature (°C)	- 10°C / +55°C*
Operating speed (m/min)	7m/min
Winding	7 m cable (diameter 6 mm)
Limit switch up and down	Yes
Key-operated control box	Yes

For more information:
www.fixator.com

