

2025 BARN STORE CATALOG



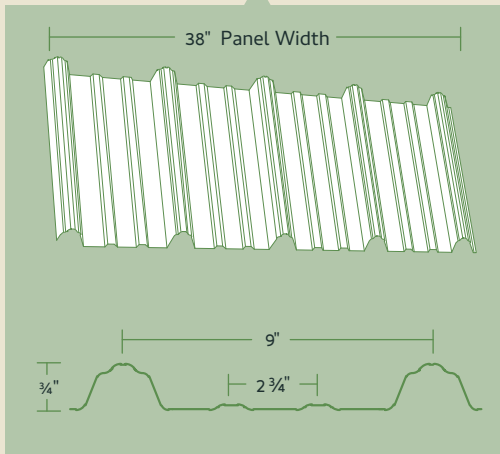
GARAGES | WORK SHOPS | CARPORTS | AGRICULTURE



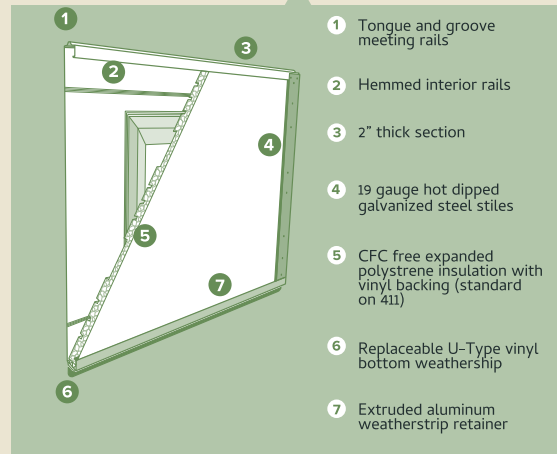
The BARN STORE

ALL STANDARD BUILDS COME WITH THE BARN STORES 1 YEAR WORKMANSHIP WARRANTY.

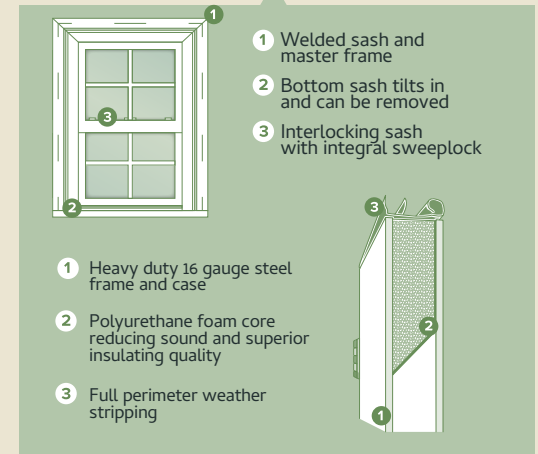
LIFETIME WARRANTY 29G MAC RIB
SIDING AVAILABLE IN 21 COLORS.



WARRANTIED INSULATED AND
WEATHER RESISTANT GARAGE DOORS.

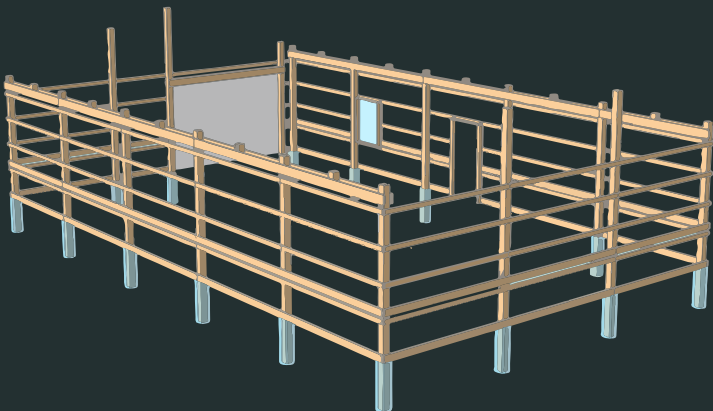


WARRANTIED ENERGY EFFICIENT
WINDOWS AND DOORS.

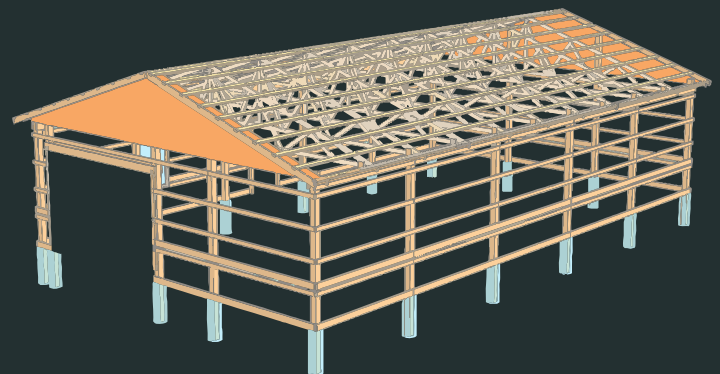


POSTS ARE CCA TREATED AND BURIED 3' WITH CONCRETE SURROUNDING

NUMBER 2 AND BETTER GRADE
LUMBER FOR MAIN FRAME



NUMBER 1 GRADE LUMBER
ENGINEERED TRUSSES



CLICK HERE A
FREE QUOTE

VISIT OUR
WEBSITE

ALL BUILDINGS AVAILABLE IN 21 DIFFERENT STANDARD COLORS.



WHITE



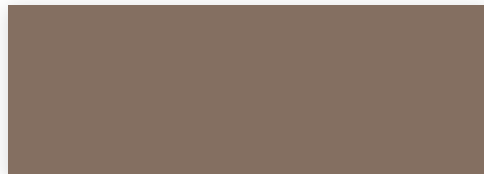
LIGHT STONE



CLAY



GREEN



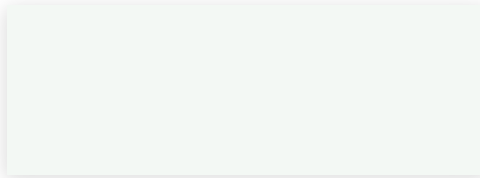
BUCKSKIN



TAN



PLUM



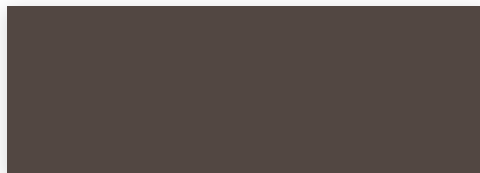
BRIGHT WHITE



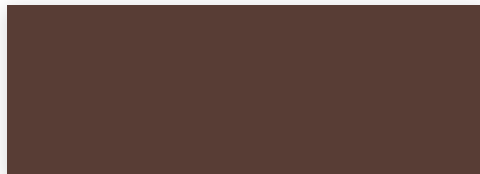
GRAY



CHARCOAL



BURNISHED SLATE



BROWN



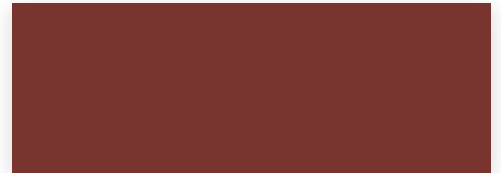
GALLERY BLUE



BLUE



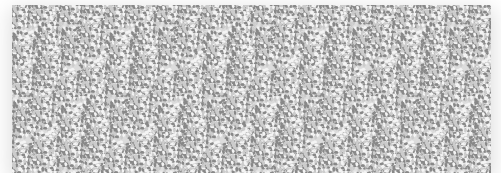
RED



DARK RED



BLACK



GALVALUME



SAPPHIRE BLUE



BRIGHT RED



COPPER PENNY

- 4 Lifetime Paint Adhesion warranty
- 30 Year chalk / 30 year fade resistance
- Residential Applications
- Increased Hail Resistance
- 25 Year Galvalume® substrate warranty

These colors are as representative of our paint as is technologically possible. For an exact match, please request a paint chip from your salesperson.



24' x 24' x 10'

The GARAGE

\$32,636

- *6/12 Pitch Roof*
- *8x24 Open End Shed (2/12)*
- *18x2 Finished Eyebrow*
- *16x8 Insulated Garage Door*
- *2-3040 Windows*
- *1-3068 Half Glass Steel Door*
- *Double Bubble Insulation*
- *6" Gutters and Down Spout*
- *1' Overhang*
- *3x3 Cupola with Weathervane*
- *3' Wainscot*
- *4" Concrete**

Excavation and Delivery are Excluded.

*including 8x24 shed with
16x3 apron and 4x4 stoop



UPGRADE OPTION 2

- 4/12 Pitch Roof
- 8x24 Open Shed
- 16x8 Insulated Garage Door
- 2-3040 Windows
- 1-3068 Steel Door
- Double Bubble Insulation
- 1' Overhang
- 3' Wainscot
- 4" Concrete*

**with 16x3 apron and 4x4 stoop including shed*

\$25,613



UPGRADE OPTION 1

- 4/12 Pitch Roof
- 16x8 Insulated Garage Door
- 2-3040 Windows
- 1-3068 Steel Door
- Double Bubble Insulation
- 1' Overhang
- 4" Concrete*

**with 16x3 apron and 4x4 stoop including shed*

\$21,991



STANDARD OPTION

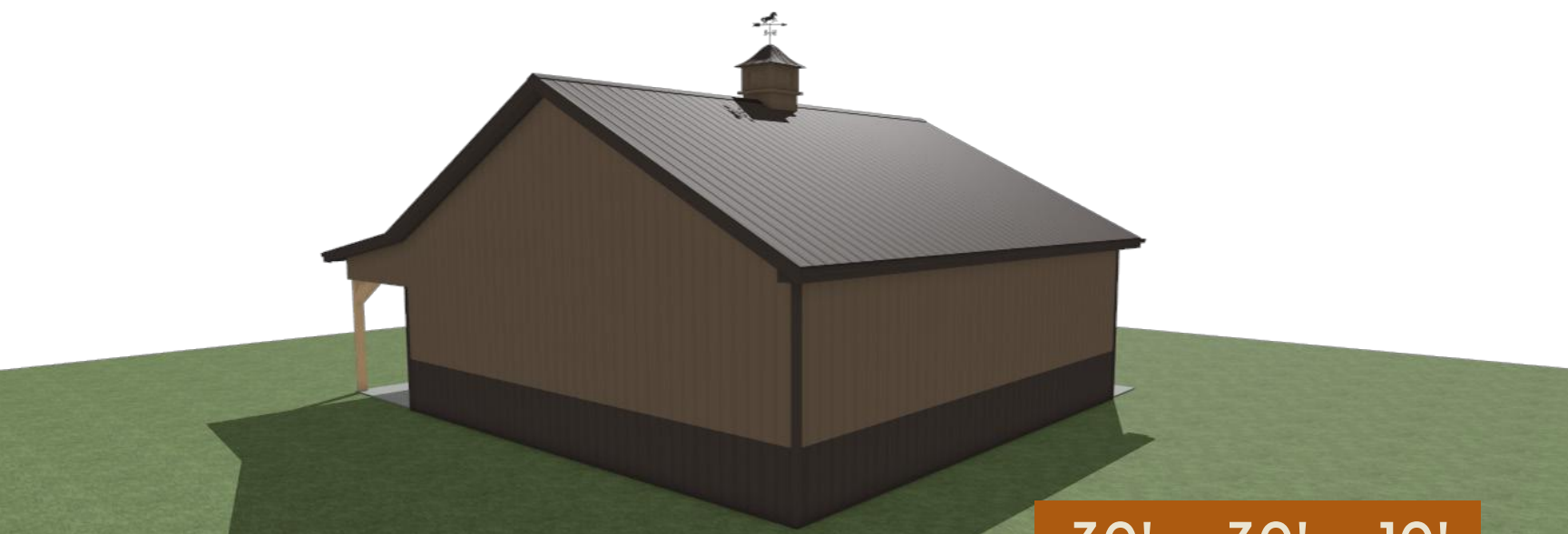
- 4/12 Pitch Roof
- 10x8 Insulated Garage Door
- 2-3030 Windows
- 1-3068 Steel Door
- Double Bubble Insulation
- 4" Concrete*

**with 10x3 apron and 4x4 stoop including shed*

\$19,385

"Opportunity is missed by most people because it is dressed in overalls and looks like work."

— Thomas Edison



30' x 30' x 10'

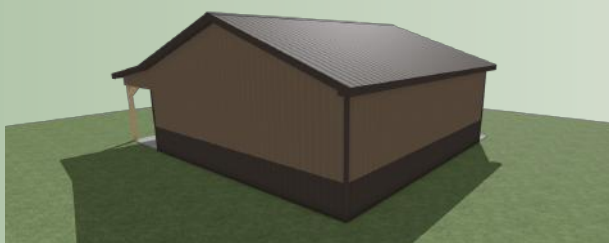
The WORKSHOP

\$38,942

- 6/12 Pitch Roof
- 8x30 Open End Shed (2/12)
- 10' Deco Truss (Over Metal)
- 2-10x8 Insulated Garage Doors
- 1-3068 Half Glass Steel Door
- 2-3040 Windows
- Double Bubble Insulation
- 6" Gutters and Down Spout
- 1' Overhang
- 3x3 Cupola with Weathervane
- 3' Wainscot
- 4" Concrete*

Excavation and Delivery are Excluded.

*including 8x30 shed with
34x4 apron and 4x4 stoop

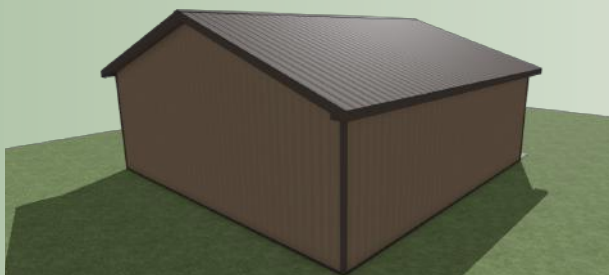


UPGRADE OPTION 2

- 4/12 Pitch Roof
- 8x30 Open End Shed
- 2-10x8 Insulated Garage Doors
- 2-3040 Windows
- 1-3068 Steel Door
- Double Bubble Insulation
- 1' Overhang
- 3' Wainscot
- 4" Concrete*

**with 34x4 apron and 4x4 stoop including shed*

\$33,142



UPGRADE OPTION 1

- 4/12 Pitch Roof
- 2-10x8 Garage Doors
- 2-3040 Windows
- 1-3068 Steel Door
- Double Bubble Insulation
- 1' Overhang
- 4" Concrete*

**with 30x3 apron and 4x4 stoop including shed*

\$28,204



STANDARD OPTION

- 4/12 Pitch Roof
- 10x8 Insulated Garage Door
- 2-3030 Windows
- 1-3068 Steel Door
- Double Bubble Insulation
- 4" Concrete

**with 10x3 apron and 4x4 stoop including shed*

\$23,598

"It is honorable, it is delightful, it is profitable, to pursue the business of agriculture."

- George Washington



30' x 40' x 12'

The STANDARD

\$52,397

- 6/12 Pitch Roof
- 2-10x10 Insulated Garage Doors
- 4-3040 Windows
- 2-3068 1/2 Glass Steel Doors
- Double Bubble Insulation
- 10x40 Open Shed
- 10x20 Shed 10x20 Closed Shed
- 6" Gutters and Down Spout
- 1' Overhang
- 10' Deco Truss (Over Metal)
- 3' Wainscot
- 4" Concrete*

Excavation and Delivery are Excluded.

*including both sheds
and 38x4 apron

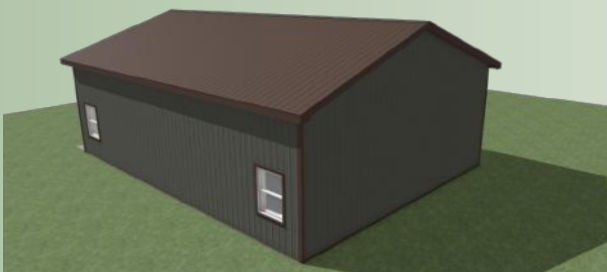


UPGRADE OPTION 2

- 4/12 Pitch Roof
- 10x40 Open End Shed
- 2-10x10 Insulated Garage Doors
- 3-3040 Windows
- 1-3068 Door
- Double Bubble Insulation
- 1' Overhang
- 3' Wainscot
- 4" Concrete*

**with 34x4 apron and 4x4 stoop including shed*

\$42,919

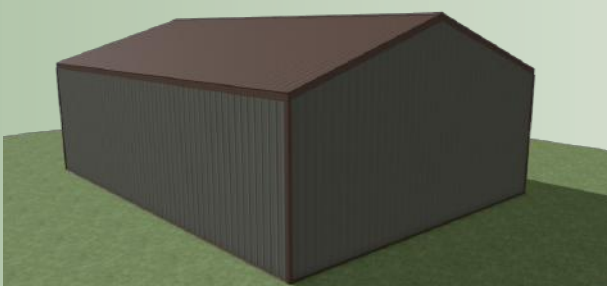


UPGRADE OPTION 1

- 4/12 Pitch Roof
- 2-10x8 Garage Doors
- 2-3040 Windows
- 1-3068 Steel Door
- Double Bubble Insulation
- 1' Overhang
- 4" Concrete*

**with 30x3 Apron and 4x4 Stoop*

\$34,431



STANDARD OPTION

- 4/12 Pitch Roof
- 10x8 Insulated Garage Door
- 2-3040 Windows
- 1-3068 Steel Door
- Double Bubble Insulation
- 4" Concrete*

**with 10x3 Apron and 4x4 Stoop*

\$29,073

"Buy land, they're not making it anymore."

- Mark Twain



30' x 50' x 10'

The JOURNEYMAN

\$52,803

- 6/12 Pitch Roof
- 8x50 Open Shed
- 2-12x8 Insulated Garage Doors
- 4-3040 Windows
- 1-3068 1/2 Glass Steel Door
- Double Bubble Insulation
- 6" Gutters and Down Spout
- 1' Overhang
- 10' Deco Truss (Over Metal)
- 3x3 Cupola with Weathervane
- 3' Wainscot
- 4" Concrete*

Excavation and Delivery are Excluded.

*34x4 apron 4x4 stoop
including 8x50 shed

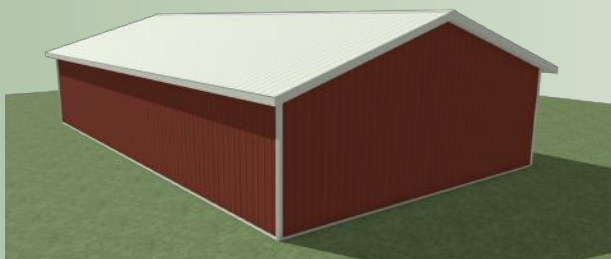


UPGRADE OPTION 2

- 4/12 Pitch Roof
- 8x50 Open End Shed
- 2-12x8 Insulated Garage Doors
- 4-3040 Windows
- 1-3068 Door
- Double Bubble Insulation
- 1' Overhang
- 3' Wainscot
- 4" Concrete*

*with 34x4 apron and 4x4 stoop including shed

\$46,381

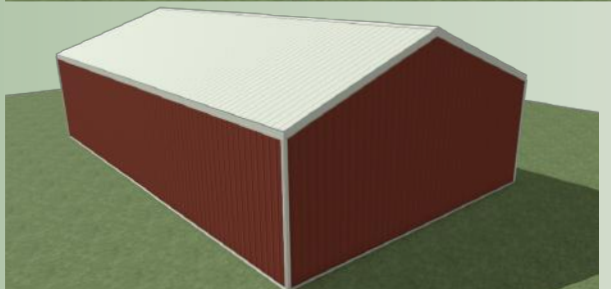


UPGRADE OPTION 1

- 4/12 Pitch Roof
- 1-16x8 Insulated Garage Door
- 3-3040 Windows
- 1-3068 Steel Door
- Double Bubble Insulation
- 1' Overhang
- 4" Concrete*

*16x3 Apron and 4x4 Stoop

\$35,467



STANDARD OPTION

- 4/12 Pitch Roof
- 10x8 Insulated Garage Door
- 2-3030 Windows
- 1-3068 Steel Door
- Double Bubble Insulation
- 4" Concrete*

*10x3 Apron and 4x4 Stoop

\$31,579

"It's a tough life, but it's a good life — and it's mine."

- "Rough & Ready" by Trace Adkins



30' x 50' x 14'

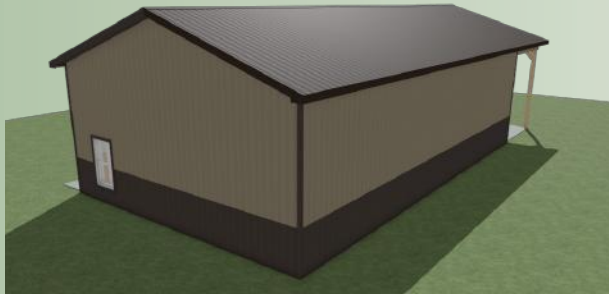
The FOREMAN

\$69,195

- 6/12 Pitch Roof
- 30x12 Gable Extension
- 2-12x12 Insulated Garage Doors
- 5-3050 Windows
- 2-3068 1/2 Glass Steel Door
- 1' Overhang
- Double Bubble Insulation
- 8x8 Open End Drop Shed (2/12)
- 16x12 Open Gabled Shed (8/12)
- 8x8 Open End Drop Shed (2/12)
- 6" Gutters and Down Spout
- 4' Wainscot
- 4" Concrete*

Excavation and Delivery are Excluded.

*50x4 apron including gable extension and shed

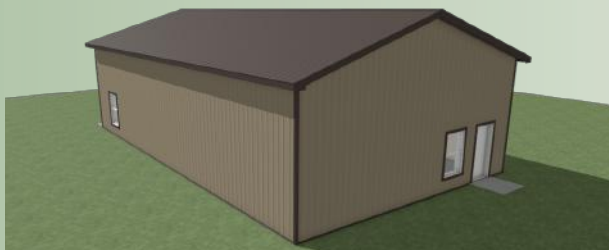


UPGRADE OPTION 2

- 4/12 Pitch Roof
- 30x12 Gable Extension
- 2-12x12 Insulated Garage Doors
- 3-3050 Windows
- 1-3068 Door
- Double Bubble Insulation
- 1' Overhang
- 4' Wainscot
- 4" Concrete*

**with 50x4 apron and 4x4 stoop including and gable extension*

\$53,196

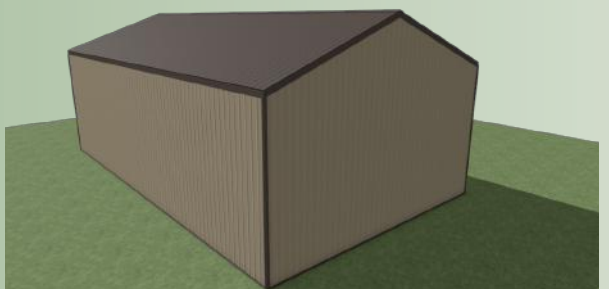


UPGRADE OPTION 1

- 4/12 Pitch Roof
- 2-12x12 Insulated Garage Doors
- 3-3050 Windows
- 1-3068 Steel Door
- Double Bubble Insulation
- 1' Overhang
- 4" Concrete*

**30x3 Apron and 4x4 Stoop*

\$43,304



STANDARD OPTION

- 4/12 Pitch Roof
- 1-12x12 Insulated Garage Door
- 2-3040 Windows
- 1-3068 Steel Door
- Double Bubble Insulation
- 4" Concrete*

**12x3 Apron and 4x4 Stoop*

\$38,813

"The work of America is not done in the halls of Congress, but in the factories, fields, offices, and shops of this great country."

- Ronald Reagan



36' x 48' x 12'

The BRIDLEWOOD

\$85,093

- 6/12 Pitch Roof
- 2-12x10 Split Sliders (Poplar with X-Bucks)
- 2-10x48 Open Sheds
- Double Bubble (Main Structure)
- 2-3068 Steel Doors (1-Exterior, 1-Tac Room)
- 4-Ramm Front Stalls
- 4-Wood Dutch Doors
- 1-12' Structural Decorative Truss
- 1-Wash Bay (Metal Walls Interior, Metal Ceiling, Open Front)

- Round Floor Drain
- 1' Overhang
- 1-12' Square Hay Hat
- 1-Tac Room (Metal Walls Interior and Exterior Wall, Metal Ceiling)
- 4x4 Cupola with Weathervane
- 3' Wainscot
- 4" Concrete*

Excavation and Delivery are Excluded.

*12x48 Center Isle, 12x12 Tac Room, 12x12 Wash Bay 2-12x3 Apron and 4x4 Stoop

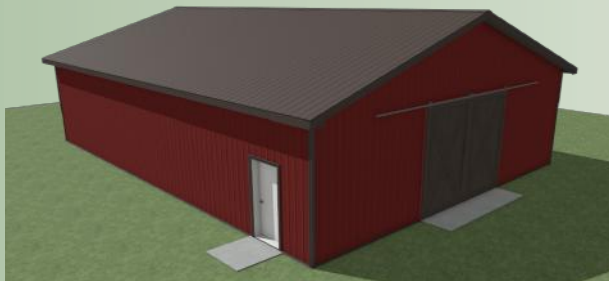


UPGRADE OPTION 2

- 4/12 Pitch Roof
- 2-12x10 Split Sliders (Poplar with X-Bucks)
- Double Bubble (Main Structure)
- 2-3068 (1-Exterior, 1-Tac Room)
- 4-Wood Dutch Doors
- 1-Tac Room (Metal Walls, Metal Ceiling)
- 1-Wash Bay (Metal Walls Interior, Metal Ceiling, Open Front)
- 4-Wood Stalls
- Round Floor Drain
- 10x48 Open Shed
- 1' Overhang
- 3' Wainscot

*12x48 Center Isle, 12x12 Tac Room, 12x12 Wash Bay 2-12x3 Apron and 4x4 Stoop

\$66,179

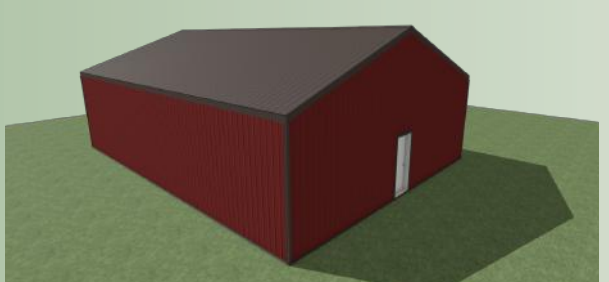


UPGRADE OPTION 1

- 4/12 Pitch Roof
- 2-12x10 Split Sliders (Metal with X-Bucks)
- Double Bubble (Walls and Roof)
- 1-3068 Steel Door
- 6-Additional Posts (Stalls/Rooms)
- 1' Overhang
- 4" Concrete*

*12x48 Center Isle, 2-12x3 Apron and 4x4 Stoop

\$33,308



STANDARD OPTION

- 4/12 Pitch Roof
- 2-12x10 Split Sliders (Metal)
- Double Bubble Insulation (Roof)
- 1-3068 Steel Door
- 6-Additional Posts (Stalls/Rooms)

\$22,470

"No hour of life is wasted that is spent in the saddle."

- Winston Churchill



40' x 60' x 12'

The CRAFTSMAN

\$101,664

- 6/12 Roof Pitch
- 2-12x10 Insulated Garage Doors
- 1-16x10 Insulated Garage Door
- 6-3050 Windows
- 2-3068 Steel Doors
- 8x20 Open Shed (3/12)
- 8x20 Open Shed (3/12)
- 38x8 Porch (3/12)
- Double Bubble Insulation
- 20x12 Gabled Shed (8/12)
- Structural Deco Truss
- 6" Gutters and Down Spout
- 1' Overhang
- 4x4 Cupola with Weathervane
- 3' Wainscot
- 4" Concrete*

Excavation and Delivery are Excluded.

*66x4 Apron and 4x4 Stoop
Including Sheds



UPGRADE OPTION 2

- 4/12 Pitch Roof
- 6-3050 Windows
- 10x60 Open Shed
- 2-3068 Steel Doors
- 2-12x10 Insulated Garage Doors
- 1-16x10 Insulated Garage Door
- Double Bubble Insulation
- 4x4 Cupola with Weathervane
- 1' Overhang
- 3' Wainscot
- 4" Concrete*

*60x4 apron 4x4 stoop
Including Sheds

\$76,946

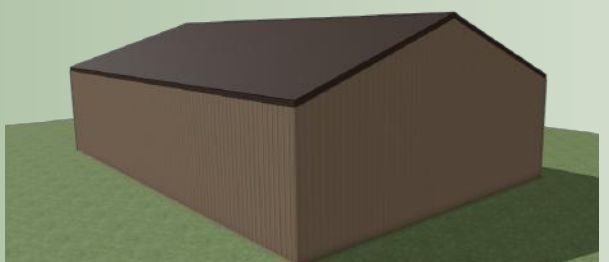


UPGRADE OPTION 1

- 4/12 Pitch Roof
- 2-12x10 Insulated Garage Doors
- Double Bubble Insulation
- 4-3050 Windows
- 1-3068 Steel Door
- 1' Overhang
- 4" Concrete*

*2 12x3 Aprons and 4x4 Stoop

\$56,458



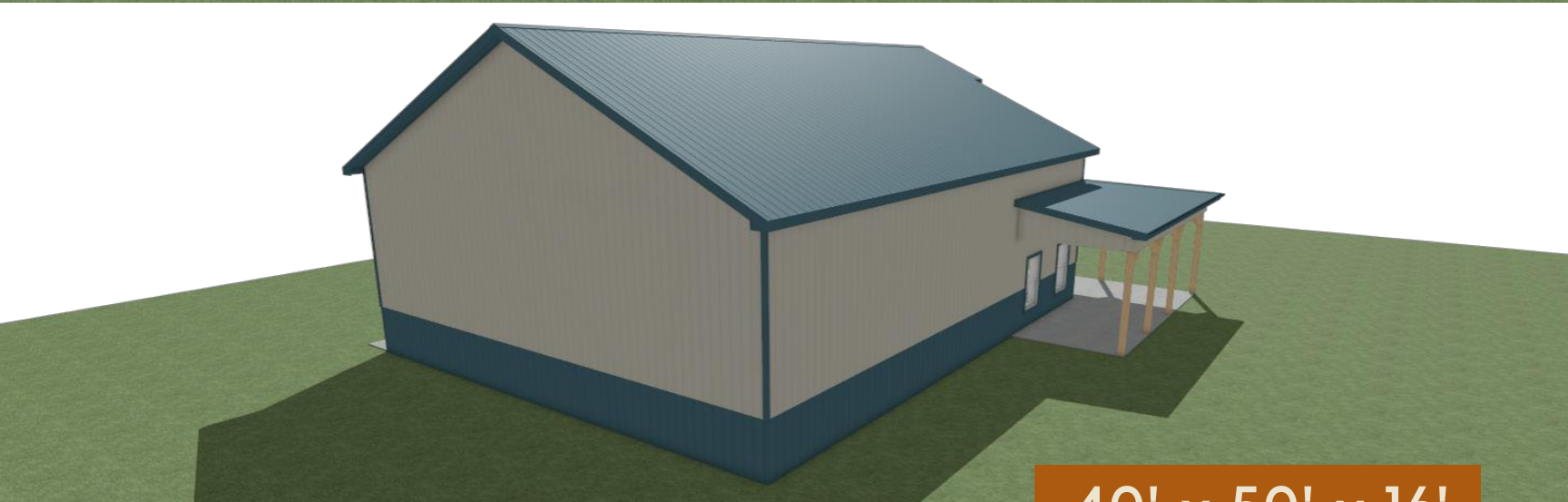
STANDARD OPTION

- 4/12 Pitch Roof
- 2-10x8 Insulated Garage Doors
- Double Bubble Insulation
- 1-3040 Window
- 1-3068 Steel Door
- 4" Concrete*

*2 10x3 Aprons and 4x4 Stoop

\$49,888

"And the view I love the most, is my front porch looking in."
- "My Front Porch Looking In" by Lonestar



40' x 50' x 16'

The CONTRACTOR

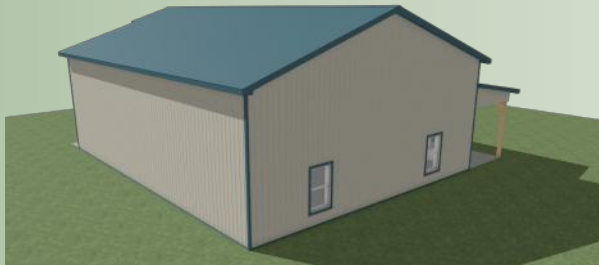
\$88,058

- 6/12 Roof Pitch
- 1-12x14 Insulated Garage Door
- 1-12x10 Insulated Garage Door
- 6-3050 Windows
- 2-3068 1/2 Glass Steel Door
- Double Bubble Insulation
- 10x16 Open Drop Shed

- 40x10 Open Drop Porch
- 10x16 Open Drop Shed
- 15' Square Hay Hat
- 15' Structural Deco Truss
- 6" Gutters and Down Spout
- 1' Overhang
- 4' Wainscot

Excavation and Delivery are Excluded.

**34x4 Apron and 4x4 Stoop
Including sheds and porch*

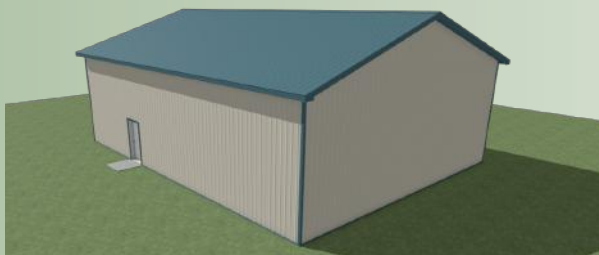


UPGRADE OPTION 2

- 4/12 Pitch Roof
- 1-12x14 Insulated Garage Door
- 1-12x10 Insulated Garage Door
- 6-3050 Windows
- 2-3068 Steel Doors
- 15' Structural Deco Truss
- Double Bubble Insulation
- 10x50 Open Drop Shed
- 15' Square Hay Hat
- 1' Overhang
- 4' Wainscot
- 4" Concrete*

*44x4 apron 4x4 stoop including sheds

\$74,344

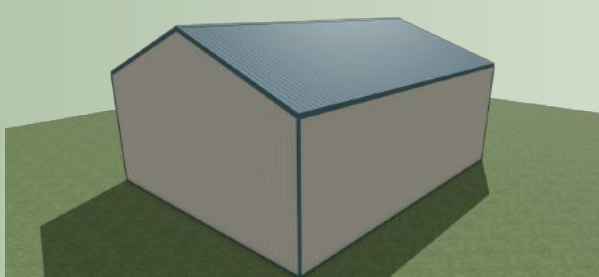


UPGRADE OPTION 1

- 4/12 Pitch Roof
- 1-12x14 Insulated Garage Door
- 1-12x10 Insulated Garage Door
- Double Bubble Insulation
- 4-3050 Windows
- 1-3068 Steel Door
- 1' Overhang

*40x3 Apron and 4x4 Stoop

\$55,663



STANDARD OPTION

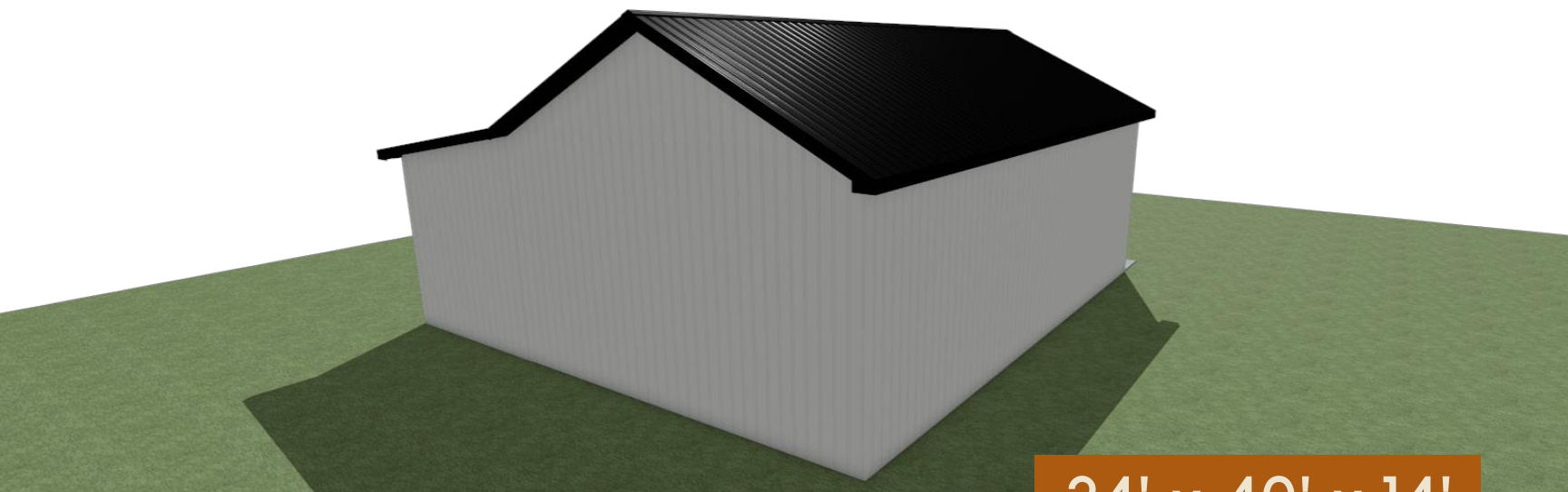
- 4/12 Pitch Roof
- 1-12x14 Insulated Garage Door
- 1-10x8 Insulated Garage Door
- Double Bubble Insulation
- 2-3040
- 1-3068
- 4" Concrete*

*1-10x3 Apron 1 12x3 Apron and 4x4 Stoop

\$49,711

"The only place where success comes before work is in the dictionary."

- Vidal Sassoon



24' x 40' x 14'

The ENCLAVE

\$43,510

- 6/12 Roof Pitch
- Double Bubble
- 6" Gutters and Down Spout
- 1' Overhang
- 10' Decorative Cedar Truss (over metal)
- 12x40 Enclosed Shed
- 9x7 Insulated Garage Door
- 1-3068 Steel Door
- 4" Concrete*

Excavation and Delivery are Excluded.

*36x4 Apron, 4x4 Stoop



UPGRADE OPTION 2

- 4/12 Pitch Roof
- Double Bubble Insulation (Roof Only)
- 1' Overhang
- 10' Decorative Cedar Truss (over metal)
- 4" Concrete*

*24x40

\$21,488



UPGRADE OPTION 1

- 4/12 Pitch Roof
- Double Bubble Insulation (Roof Only)
- 4" Concrete*

*24x40

\$18,448



STANDARD OPTION

- 4/12 Pitch Roof
- Roof and Gable

\$10,678

"Let's make all the stops along the way—the problem is we don't know where we're goin'."

- "The Seashores of Old Mexico" by George Strait



24' x 24' x 10'

The OUTPOST

\$28,274

- 6/12 Roof Pitch
- Double Bubble Insulation
- 1' Overhang
- 8' Decorative Cedar Truss (over metal)
- 24x12 Enclosed Gable Extension
- 12x9 Metal Split Slider (with X-Bucks)
- 6" Gutters and Down Spout
- 1-3068 Steel Door
- 3x3 Cupola with Weathervane
- 4" Concrete*

Excavation and Delivery are Excluded.

*24x24, 24x12 Enclosed Gable Extension, 12x3 Apron, 4x4 Stoop



UPGRADE OPTION 2

- 4/12 Pitch Roof
- Double Bubble Insulation (Roof Only)
- 1' Overhang
- 8' Decorative Cedar Truss (over metal)
- 4" Concrete*

*24x24

\$14,878

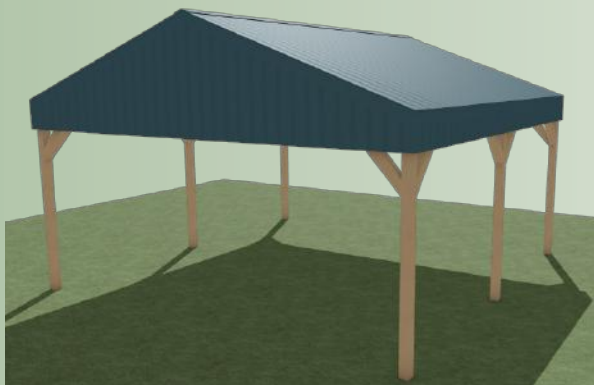


UPGRADE OPTION 1

- 4/12 Pitch Roof
- Double Bubble Insulation (Roof Only)
- 4" Concrete*

*24x24

\$12,834



STANDARD OPTION

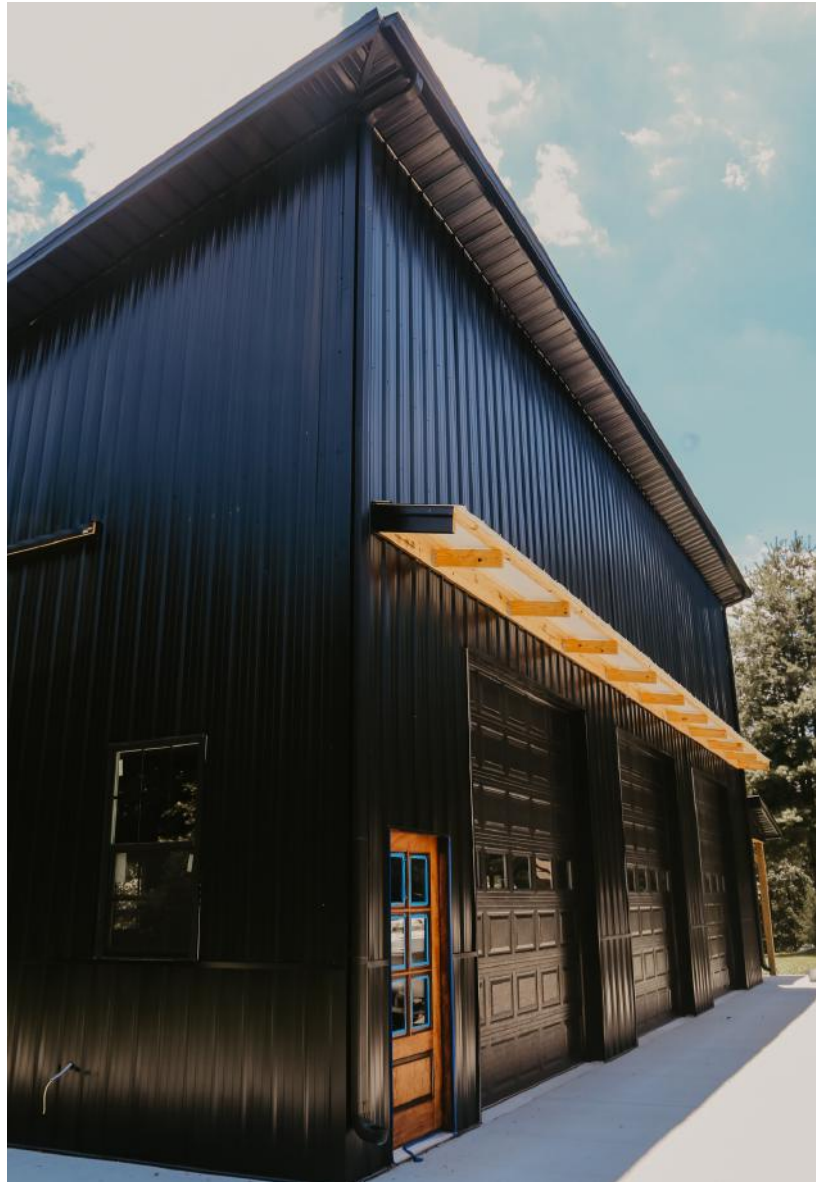
- 4/12 Pitch Roof
- Roof and Gable

\$8,102

LETTER FROM OUR CEO.

I want to personally thank you for considering our business for your barn and building needs. From the beginning, our mission has been simple: to deliver exceptional craftsmanship and unparalleled service that you can trust.

-Austin Chavira



GET YOUR **FREE** QUOTE TODAY

