



PREVENTION. AWARENESS. **NEW CLINICAL OPTIONS.**

Your gift makes a difference in a child's life.

 **Michelle's House**
Sickle Cell Disease Association of America, CT

michellshousect.org

501 c3 Nonprofit Organization

Dear Friend,

Greetings once again from your Sickle Cell Team and the Sickle Cell Community in CT.

We pray and hope this note finds you and your family well in these the best and worst of times influenced heavily by the Pandemic we are living through.

We are excited to share with our friends and supporters the new partnerships we have secured—most recently with CVS Health, the fourth largest corporation in the United States. In September, CVS Health announced one of its highest priority initiatives is to address systemic inequities for patients with serious chronic illnesses—sickle cell disease being a primary focus.

CVS Health has chosen to collaborate with the Sickle Cell Disease Association of America, CT (SCDAA.CT) to pilot many of their SCD initiatives. Their decision to partner with us is a testament to the progress we have achieved and the tremendous support we have received from our Sickle Cell Community in CT.

Not to be overshadowed by the CVS Health news, SCDAA.CT was recognized as the exclusive Sickle Cell Community Based program in CT by the CT Department of Public Health (DPH).

On a state-level, our organization will work to advance the development of new clinical options and therapies to find a cure for Sickle Cell Disease.

We thank you in advance for your continued financial support. With your help we have demonstrated how our collective efforts bring about positive change.

Please note that we will continue to need your help to bend the curve of inadequate funding for SCD and provide support for the most vulnerable in our Connecticut communities.

Once again, Thanks to you all.
Sincerely,

Jim Rawlings

James Rawlings R.PH., MPH
President /CEO, SCDAA.CT



Partners & Allies

SCDAA.CT Awarded 2021 Race Equity Fund

SVP Connecticut established the Race Equity Fund to help close the opportunity gap in BIPOC communities. In 2021, SCDAA.CT was awarded one of eight grants provided to BIPOC-led nonprofits in support of our pursuit of systemic change.

The \$25,000 grant will help our organization develop and publish a comprehensive report that examines the current state of the sickle cell disease in Connecticut. The report will highlight 5-6 domains of systemic and pervasive inequities within the Sickle Cell Community (SCC). Study areas will include:

- 1 The **academic** experience of SCD youth who navigate within biased and broken systems.
- 2 The lack of **awareness of SCT** and predictive outcomes to current and future generations.
- 3 The **quality of life** issues that impede housing and employment opportunities.
- 4 The lack of **state and local funding** that hinders prevention strategies and minimizes acute care utilization.
- 5 The lack of **cultural competency** within health and medical systems that results in patient trauma of stigmatization.

Empowered with our state report, we can address the health disparities and inequities with data that supports what we have known and our clients have experienced for far too long.



Partners & Allies



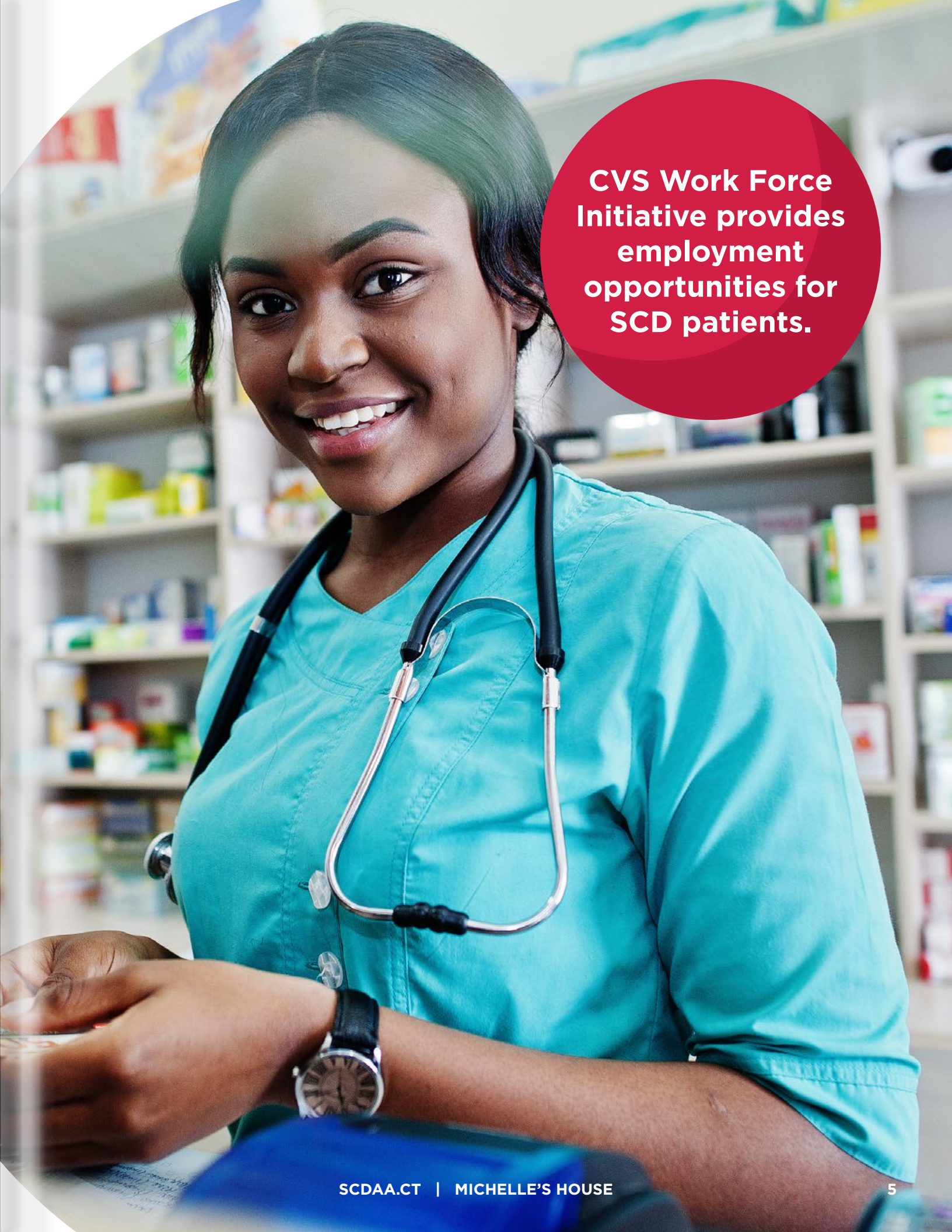
CVS Caremark, the Pharmacy Benefit Manager (PBM) of CVS Health has expanded its efforts to decrease health disparities among patients with sickle cell disease, HIV and cardiovascular disease by collaborating with local partners and utilizing its unique enterprise assets.¹

“We believe we have the obligation and the ability to partner with others to change the health trajectory for many patients who have been impacted by them for too long.” Said Alan Lotvin M.D. President of CVS Caremark and Executive Vice President, CVS Health.

Among the nation’s sickle cell disease community programs, SCDAACT has been chosen by CVS Caremark to pilot its innovate care initiatives and develop new modalities to confront systemic health inequities. We are excited to share with you a few of the CVS Health initiative that we will implement.

- **Drive sickle cell trait awareness** with trait testing.
New innovations: SCT testing at Michelle’s House and CVS locations in Connecticut.
- **In-home transfusions** that will minimize the need for critical crisis hospital care through early intervention via hydration, pain management, and new therapies.
- **Work Force Initiative** - CVS employment opportunity program for SCD patients within the 5 largest counties in CT. SCD patients work in the front store or pharmacy within their communities, while CVS Store and Pharmacy Managers gain SCD insights that help inform employee policies, enhance SCD customer service while receiving recognition from CVS corporate office.

1. CVS Health Website: <https://cvshealth.com/news-and-insights/press-releases/cvs-caremark-launches-new-efforts-to-tackle-health-disparities>



CVS Work Force Initiative provides employment opportunities for SCD patients.

Great News!

SCDAA.CT Awarded \$500,000

From forward-thinking educational programs, to sickle cell trait awareness initiatives, to building new allyships with industry leaders—our work has not gone unnoticed.

In 2021, SCDAA.CT earned the distinction of being the sole recipient of a \$500,000 sickle cell disease (SCD) grant awarded by the Connecticut Department of Public Health (DPH) and the Connecticut Comprehensive Sickle Cell Disease Consortium.

Our organization has been in partnership with the CT DPH and the Consortium since of the launch of the state's sickle cell disease plan in 2008. "The plan serves as a blueprint for continuing to establish and maintain a comprehensive delivery system across the lifespan for the treatment and care of those with SCD and trait."¹

The \$500,000 grant will enable our organization to expand our reach to New London through Hartford counties while connecting SCD families to support services.

1. Connecticut State Department of Public Health website:
<https://portal.ct.gov/DPH/Press-Room/Press-Releases---2008/January-2008/Department-of-Public-Health-to-Unveil-State-Sickle-Cell-Disease-Plan>

SCD Strategies And Deliverables

- Determine and address areas of need for children with SCD and increase transition planning and services from pediatric primary and specialty care to adult services.
- Determine and address areas of need for adults with SCD which includes identifying adults not receiving care in a Comprehensive Treatment Center (CTC). (Those loss to care).
- Support and create linkages to Medical Homes for primary care, and coordinate access to a medical home. These include linkages to Access and Safety Net Programs.
- Continue to improve state-wide SCD Emergency Room protocols
- Increase and conduct community outreach, and education to CT residents about SCD and increase family support activities to those diagnosed with SCD/Trait.
- Provide services to patients during a pandemic and provide successful adaptations.
- Complete a Results Based Accountability Program Report Card to provide at-a-glance statistic on several program outcomes

Give Today

At Michelle's House, we won't let our children or families suffer in silence.

We are a driving force that is reshaping the SCD landscape through transparent discussions and by providing the resources and services that are so desperately needed.

While COVID-19 has magnified the disparities in communities of color, and federal and state funding continues to fall shamefully short for the more than 100,000 Americans living with SCD—we keep moving! Our actions are bold, our purpose is targeted and our direction is always forward!

So join our SCDA.ACT mission and movement by giving today.



2 Ways to Give

**SCDAA.CT is a 501 C3 organization.
Your gift is 100% TAX DEDUCTIBLE.**

1. Mail-in Donations:

Please include **ALL** of the following information in your letter to us.

— **The amount of your donation:**

\$25, \$50, \$100, \$250, \$500, Other

— **Make checks payable to:** SCDA.A.SC

— **Credit card donation:**

Include the bulleted information.

- Name on Credit Card (please print)
- Card Number
- Expiration Date
- Cardholder Signature
- Date
- Phone Number

— **All donations:** Let us know where to direct your support.

- Tutorial Programs
- Michelle's House
- New Prevention Initiatives

Mail Your Donation To:

SCDA.A.SC
1389 Chapel Street
New Haven, CT 06511

2. Online Donations:


It's quick, easy and **secure**. Simply visit our website, [Michelleshousect.org/give](https://michelleshousect.org/give), or scan the QR code with your smartphone camera and follow the prompts.





PREVENTION. AWARENESS. NEW CLINICAL OPTIONS.

Your gift makes a difference in a child's life.

 **Michelle's House**
Sickle Cell Disease Association of America, CT

michelleshousect.org

501 c3 Nonprofit Organization