

MVI ECOPACK

Nature's Tableware,
For a Better Tomorrow.



SUSTAINABLE
PACKAGING
SOLUTION

2026/

FOR GREEN FUTURE

JOIN US



SINCE
2010.

THE JOURNEY BEGINS.....



Click
here
to visit
our
website.

W E L C O M E

We started with a simple belief:



The product is recyclable.



Reducing the environmental impact by optimizing the quantity of materials used.



The product can decompose without harmful effect on the environment.



Lid: Alidis available for this item



The product can be reheated in the traditional oven.



The product can be reheated in the microwave oven.



Allmentary logo: The material used in the product design is suitable for food contact.

Triman logo: The three arrows symbolize the sorting; the circular arrow as it evokes the recycling which follows the sorting.

PICTOGRAM DESIGNATION



C O N T E N T

3



**BRAND
PROFILE**

7



**MATERIAL
SCIENCE**

11



**PRODUCT
SOLUTION**

20



**PRODUCT
CATALOGUE**

47



**TERMS &
CONDITIONS**

c o n v e n i e n c e s h o u l d n ' t c o s t t h e e a r t h .





FIND MORE

Brand Profile

YOUR PRIVATE LABEL CONSULTANT FOR ECO
TABLEWARE.

Founded with a mission to replace single-use plastics,
MVI ECOPACK is a leading global supplier of 100%
compostable, plant-based tableware and packaging.



  @mviecopack
+86771-3182966 | orders@mvie-copack.com | www.mviecopack.com

30+

30+ Exported Countries

6 Workshops

for Diverse Production Lines

278 Sets

of Precision Production Equipment

EARTH-FIRST COMMITMENT

Sustainability is embedded in every step. Our products are made from annually renewable, often agricultural by-product materials, ensuring zero reliance on virgin forests. Fully certified to FSC®, BRC, and OK Compost standards, every plate, bowl, and container decomposes naturally back into the earth, closing the loop on a truly circular life cycle. We don't just make tableware — we build a greener future for global dining.



GREENER FUTURE

To view the full Sustainable collection, visit mviecopack.com



We Have

15+ YEARS OF EXPERIENCE

Founded in 2010, MVI ECOPACK embarked on a mission to redefine disposable tableware through sustainability. Starting with a vision to replace single-use plastics, we have grown into a trusted global manufacturer with a state-of-the-art production facility spanning over 18,000 m². Backed by more than 15 years of export experience, we serve partners across 30+ countries, establishing a firm footprint in the international eco-packaging market.

BIGGER AND BETTER 2026



JOURNEY START 2010

We've served cafes, restaurants, and retailers across 30+ countries for over a decade, delivering premium quality and reliable service. Over 95% of our production is exported worldwide, bringing accessible, planet-positive tableware to businesses that refuse to choose between convenience and sustainability.



WE ARE SUSTAINABLE -A PIONEER FOR A GREENER FUTURE-

**G
L
O
B
A
L**



46,000,000+
MONTHLY PRODUCTION
Supplying customers in more than
30+ countries and regions

6,000,000

of our products were trusted and selected.

 8,500

Tons of Agri-waste
Recycled from farm fields

 2,800

Tons of Plastic Replaced
Eliminated permanent waste

 300+

Sustainable F&B Brands
Joint impact for a greener future

-85%

Reduction in carbon emissions compared to traditional plastic packaging.

2025 ANNUAL IMPACT HIGHLIGHTS

WE ARE SUSTAINABLE

OUR MATERIAL

INSPIRED BY NATURE



THE AGRI-FIBER CIRCULAR ECONOMY

- **AGRICULTURAL FIELDS**

Sugarcane, Bamboo, Wheat biomass

- **WASTE COLLECTION**

Gathering agricultural by-products

- **SMART MANUFACTURING**

Extraction → Molding → Quality Control

- **GLOBAL BRANDS**

Sustainable F&B packaging solutions

- **POST-CONSUMER**


Industrial composting & bio-degradation

- **BACK TO EARTH**

Nutrients returned to nurture new life



Material Performance Matrix

Material	Heat tolerance	Recyclable	Made from recycled materials	Biodegradable	Home Compost	Oven proof	Suitable for microwave oven	Freezing (-18°C)
								
Sugarcane Pulp	-18°C+210°C/-0,4°F+410°F	✓	✓	✓	✓	✓	✓	✓
Sugarcane pulp laminated with	PLA, PE : -18°C +140°C/-0,4°F +284°F		✓				✓	✓
	PBAT:-18°C+115°C /-0,4°F+239°F		✓					✓
Corn Starch	100°C(Med)			✓			✓	✓
	80°C(Low)		✓	✓	✓			✓
Wheat Straw			✓	✓	✓			✓
Bamboo	-18°C+180°C/-0,4°F+356°F			✓	✓	✓		✓
Cardboard	-40°C+200°C/-40°F +392°F	✓	✓	✓	✓			✓
Cardboard with PE lamination	-18°C+140°C/-0,4°F +284°F		✓				✓	✓
Palm leaf	-18°C+100°C/-0,4°F+212°F		✓	✓	✓		✓	✓

Selection Guide: Choose **Bagasse/Bamboo** for hot meals (high temp resistance). Use **Corn Starch/PLA** for cold desserts/drinks. **Recycled Paper** is ideal for budget-sensitive projects, while **Bamboo** elevates brand perception.



2026 OVER VIEW

Introduces its comprehensive 2026 lineup, uniting a diverse spectrum of eco-conscious Solutions under one vision. The iconic Sugarcane Bagasse collection expands, now featuring enhanced textures and refined shapes, elevating the natural fiber aesthetic. Simultaneously, the Plant-Based PLA series broadens its versatility with new durable formats, perfect for both hot and cold applications. Completing the ecosystem, the Bamboo & Corn Starch collections extend their elegant, renewable lines, introducing sophisticated silhouettes that seamlessly blend functionality with natural beauty. Together, the collection represents our commitment to performance, sustainability, and timeless design — offering a complete, responsible solution for every culinary occasion.

COLLECTION

- ✓ Sugarcane to Soil, Naturally.
- ✓ From Bagasse, Back to Earth.
- ✓ 100% Plant-Based. 100% Compostable.



MATERIAL SOLUTION



SINCE 2010

OUR COMMITMENT

When you choose mviecopack, you work with a sustainability-first manufacturer that balances regulatory certainty, product reliability, and environmental impact. Every piece of our bagasse packaging embodies our promise: a PFAS-free, fully compostable alternative that never forces you to choose between quality and eco-responsibility.



M
A
T
E
R
I
A
L
S
C
I
E
N
C
E



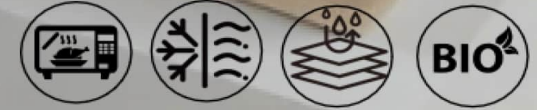
BORN IN NATURE



From farm to table, to earth again.

  @mviecopack

+86 771-3182966 | orders@mvie-copack.com | www.mviecopack.com

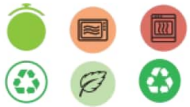


- Corn starch takeaway box
- Sugarcane pulp burger box
- Multi-compartment meal box
- Kraft paper food box
- Square kraft paper bowl
- Sugarcane compartment tray

ECO TO-GO PACKAGING SOLUTIONS

ECO-TO-GO LINE

The Eco-To-Go series is made from sugarcane bagasse, corn starch, and wheat straw, with structural design optimized for delivery conditions — reinforced rims prevent warping, and snap-tight lids stay closed during transit. All products are EN13432 certified for compostability, fully degrading within 90–180 days in commercial composting facilities. For QSR chains and delivery platforms handling tens of thousands of orders per month, this series delivers a reliable balance of performance, compliance, and unit cost.



Clamshell &
Lunch boxes



6" burger box
MVF-010



600ml Clamshell
MVF-006



8" Clamshell
MVB2-037



8" 2-com burgers
box
MVB2-028



9"x6" Clamshell
MVF-001





- Sugarcane plate
- Sugarcane bowl
- Sugarcane mini plate
- Sugarcane sushi tray
- Sugarcane cutlery

MOLDED FIBER DINNERWARE



PLATES & BOWLS



Sugarcane pulp pizza plate



Sugarcane pulp bowl



Sugarcane molded fiber plate



Sugarcane pulp salad bowl



Sugarcane pulp sushi tray



GREEN DINING LINE

The Green Dining Line dissolves that trade-off: plates, bowls, and cutlery are molded from sugarcane bagasse, bamboo pulp, or corn starch. bio cutlery withstands hot food up to 85°C without softening; bagasse plates and bowls are unbleached and meet FDA and EU food-contact standards. Ideal for banquets, airline catering, and school cafeterias — any high-volume, single-use setting. The core value proposition: convenience with a clear end-of-life path — commercially compostable within 180 days, no microplastics left behind.



FRESH

03

FRESH & SERVE – FRESH SERIES MEAL



- PLA salad bowl
- Bagasse salad bowl
- PLA i c e - cream cup with lid
- PLA portion cup
- PLA U-shape cup
- Biodegradable sushi tray
- Compostable rectangular food tray
- PLA deli container with lid
- Craft Paper Salad Bowl



PLA salad bowl



Sugarcane bowl



Bio-plastic
Cups & Container



Craft Paper
Container

The Fresh & Serve series uses PLA and sugarcane bagasse with high-clarity lids that showcase the natural colors of ready-to-eat salads, sushi, and fruit cups. Materials meet FDA food-contact standards, resist low temperatures, and do not alter taste.



- PLA clear cup
- Water-based coated paper cup with lid
- Corrugated paper coffee cup
- PET clear cup
- Compostable paper straw
- Sugarcane paper cups



RECYCLE TO - GO CUP

SIP&GO LINE

The Sip & Go series covers both cold and hot drinks: cold cups in PLA or PET — crystal clear and crush-resistant; hot cups in water-based coated paper or double-wall corrugated, offering better heat insulation than standard single-wall cups. Matching CPLA lids withstand up to 85°C and feature a snap-fit design to prevent leaks. All paper cups use a water-based coating instead of traditional PE lamination, allowing full fiber-coating separation for recycling or composting. Custom logo printing is available. For coffee chains and tea brands transitioning from plastic to plant-based solutions, this is a proven, scalable path...



get the
look...



Sugarcane pulp
Cup



Paper Cup



PLA Cold Cup



PET Dell Cup



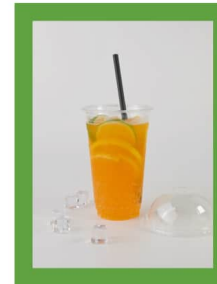
Recycled Plastic
Flat Lid



Recycled Plastic
Demo Lid



Slipper Lid





MICROWAVE SAFE



OVEN SAFE



OIL RETENTION



ECO-GLAZE

Technical Performance

Design Engineered to Last

Our sugarcane bagasse tableware is engineered for professional foodservice durability. From our proprietary fiber-blend formulation and precision molding process to reinforced edge design and leak-resistant structure, it delivers reliable performance for hot meals, cold dishes, and high-volume use.

SUGARCANE

Plates...



Round plate



Rippled Edge Plate



3-compartment Plate



2-compartment Plate



Oval Plate



Square Plate



Pizza plate

Custom Dining Plates

These plates are crafted from natural biodegradable fiber. They are food-safe, heat-resistant, and leak-proof. Designed for versatile dining use, they offer a sustainable, minimalist, and premium alternative for modern catering.



Natural Raw Material, Food Grade Safety



Fully Biodegradable, Environmentally Compliant



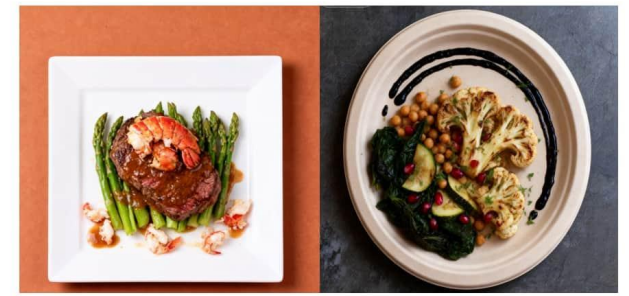
Heat & Leak Resistant, Versatile Use



The product can be reheated in the microwave oven.



The product can be reheated in the traditional oven (even cooked for some references).



Stone

Homespun Accents





PLATES

COLLECTION

- White**
Code: WHVI
- Embossed Design**
- Nature**
Compostable material



MVP-009
8" Rippled Edge Plate
210*15(mm)
CTN QTY 1000



MVP-008
7" Rippled Edge Plate
182*15(mm)
CTN QTY 1000



MVP-008
6" Rippled Edge Plate
155*12.5(mm)
CTN QTY 1000



MVP-013
10" 3-com Plate
258*20.5(mm)
CTN QTY 500



MVP-015
9" 3-com Plate
225*19.6(mm)
CTN QTY 500



MVP-017
9" 2-com Plate
225*19.6(mm)
CTN QTY 500



MVP-025
6" Square Tray
160*160*15(mm)
CTN QTY 500



MVP-023
8" Square Tray
200*200*15 (mm)
CTN QTY 500



MVP-020
10" Square Tray
260*260*15 (mm)
CTN QTY 500



MVT-007
260 Tray
260*130*20 (mm)
CTN QTY 500



MV-BP12
12" Round Plate
305*20(mm)
CTN QTY 250



MVP-002
10" Round Plate
258*20.5(mm)
CTN QTY 500



MVP-002
9" Round Plate
230*22(mm)
CTN QTY 500



MVP-002
8" Round Plate
205*16(mm)
CTN QTY 1000



MVP-005
7" Round Plate
175*15.8(mm)
CTN QTY 1000



MVP-006
6" Round Plate
155*12.5(mm)
CTN QTY 1000



MVP-019
9"x6" Oval Plate
230*160*20(mm)
CTN QTY 500



MVP-011
10" oval Plate
264*199*19(mm)
CTN QTY 500



MVP-010
12.5" oval Plate
317.5*254*24.5(mm)
CTN QTY 500

Customized Shape

BEIGE



MVF-005
Dimensions(mm) :
127.4*127.4*45.4/75
5" Burger Box
CTN QTY 500



MVF-009
Dimensions (mm):
152×152×44/75
6" Burger Box
CTN QTY 500



MVF-010
Dimensions (mm) :
155×152×49/78 EU
6" Burger Box
CTN QTY 500



MVB2-037
Dimensions (mm) :
220×200×45/77
8" Clamshell
CTN QTY 200



MVB2-026
Dimensions (mm) :
235×230×50/80
9" Clamshell
CTN QTY 200



MVF-007
Dimensions (mm) :
170×125×35/50
450ml Clamshell
CTN QTY 500



MVF-001
Dimensions (mm) :
230×158×46/80
9"×6" Clamshell
CTN QTY 250



MVF-006
Dimensions (mm) :
183×135×45/65
600ml Clamshell
CTN QTY 500



MVB2-028
Dimensions (mm) :
220×200×45/77
8" 2-Com Clamshell
CTN QTY 200



MVB2-038
Dimensions (mm) :
220×200×45/77
8" 3-Com Clamshell
CTN QTY 200



MVB2-039
Dimensions (mm) :
235×230×50/80
9" 3-Com Clamshell
CTN QTY 200



MVF-002
Dimensions (mm) :
251×166×47/63
9"×6" 2 Com Clamshell
CTN QTY 250

NATURE



MVB2-012
Dimensions (mm) :
161.1×161.6×44.5/80
PFF 6" Burger Box
CTN QTY 500



MVB2-015
Dimensions (mm) :
228.6×228.6×46.2/75
PFF 9" Clamshell
CTN QTY 200



MVB2-014 & MVB2-016
Dimensions (mm) :
199.8×199.8×45.9/75 & 228.6×228.6×46.2/75
PFF 8" & 9" 3-Com Clamshell
CTN QTY 200



SUGARCANE BURGER BOX

Disposable clamshell burger box, sturdy for takeaway use.

MVI ECOPACK



MVB2-006
Dimensions (mm) :
245×245×47/74
10" 3 Com Clamshell
CTN QTY 200



MVB2-007
Dimensions (mm) :
205×205×40/65
8" Shallow Clamshell
CTN QTY 200



MVB2-008
Dimensions (mm) :
205×205×40/65
8" 3 Shallow Clamshell
CTN QTY 200



MVB2-009
Dimensions (mm) :
402.5×230×72.5
9×8 inch Clamshell
CTN QTY 200



MVB2-010
Dimensions (mm) :
402.5×230×72.5
9×8 inch 2-Com Clamshell
CTN QTY 200



MVB2-011
Dimensions (mm) :
402.5×230×72.5
9×8 inch 3-Com Clamshell
CTN QTY 200



MVB2-013/ MVB2-015
PFF 8" / 9" Clamshell
CTN QTY 200



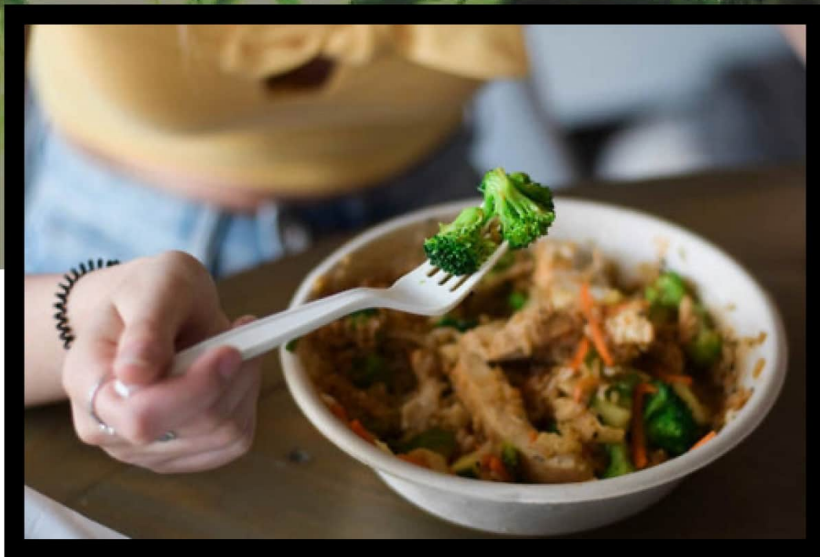
- SUGARCANE PULP CLAMSHELL -

100% SUGARCANE FIBER

- **Green Economy**-A raw material obtained from the recovery of plant waste.
- **Elegantly Refined**-Delicately ivory-colored products, velvety to the touch, and elegantly shaped.
- **Practical & Durable**-Remain sturdy during service, even with hot foods and in the oven.



SUGARCANE BOWLS COLLECTION



SPECIAL SHAPE BOWLS



MVB-015
Dimensions (mm) :
180x180x40
16OZ Bowl
CTN QTY 300



MVB-014
Dimensions (mm) :
180x180x54
24OZ Bowl
CTN QTY 300



MVB-013
Dimensions (mm) :
180x180x70
32OZ Bowl
CTN QTY 300



MVB-012
Dimensions (mm) :
180x180x90
42OZ Bowl
CTN QTY 300



◆ Custom lids to fit our sugarcane bowl line, delivering a secure, leak-proof seal for soups, salads, and meals.



MVB-66
Dimensions (mm) :
Ø215.9*199*56.3
1050ML Salad Bowl
CTN QTY 300



MVB-68
Dimensions (mm) :
Ø245.3*228.5*54
1400ML Salad Bowl
CTN QTY 300



MVB-69
Dimensions (mm) :
Ø245.3*228.5*66.6
1700ML Salad Bowl
CTN QTY 300

Material Options for Customized Lids

Pulp Lids: 100% sugarcane bagasse, fully compostable.
Recyclable Plastic Lids: BPA-free, food-safe, recyclable plastic, offering clarity and durability.





NATURE



MVB-61
Dimensions (mm) :
Ø128.5×48.1
350ml Soup Bowl
CTN QTY 1000



MVB-028
Dimensions (mm) :
Ø153×45 12OZ
CTN QTY 1000



MVB-004
Dimensions (mm) :
Ø177×66
850ML Salad Bowl
CTN QTY 500



MVB-63
Dimensions (mm) :
Ø180×75.6
1000ML Soup Bowl
CTN QTY 1000



BEIGE



MVB-016
Dimensions (mm) :
Ø160×34.5 6"
CTN QTY 1000



MVB-016
Dimensions (mm) :
Ø160×34.5 6"
CTN QTY 1000



MVB-029
Dimensions (mm) :
Ø160×37 12OZ
CTN QTY 1000



MVT-41
Dimensions (mm) :
Ø194×52
30oz Salad Bowl
CTN QTY 500



MVB-019
Dimensions (mm) :
Ø196×63
32oz Bowl
CTN QTY 500



MVB-018
Dimensions (mm) :
Ø196×48.73
24OZ Bowl
CTN QTY 500



MVB-023
Dimensions (mm) :
Ø204.4×41.8
24OZ Round Bowl
CTN QTY 500



MVB-002
Dimensions (mm) :
Ø135×43 350ML
CTN QTY 1000



MVB-030
Dimensions (mm) :
Ø175×37 16OZ
CTN QTY 1000



MVB-027
Dimensions (mm) :
Ø180×38 14OZ
CTN QTY 1000



MVB-022
Dimensions (mm) :
Ø204.4×59.3
32OZ Round Bowl
CTN QTY 500



MVB-021
Dimensions (mm) :
Ø204.4×70.8
40OZ Round Bowl
CTN QTY 500



MVB-024
Dimensions (mm) :
Ø204.4×85
48OZ Round Bowl
CTN QTY 500



MVB-018
Dimensions (mm) :
Ø205×30 8"
CTN QTY 1000



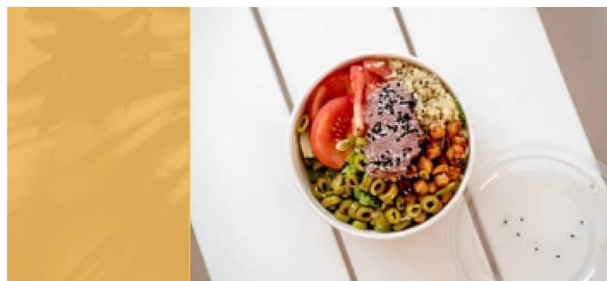
MVB-001
Dimensions (mm) :
Ø155×55.5 500ML
CTN QTY 1000



MVB-033
Dimensions (mm) :
Ø203×135×40.6
18OZ Oval Bowl
CTN QTY 300



MVB-031
Dimensions (mm) :
Ø236×169×40.6
26OZ Oval Bowl
CTN QTY 300



ROUND&OVAL SHAPE BOWLS

Leak-proof design, 100%compostable.

◆Material Options for Customized Lids

Pulp Lids: 100% sugarcane bagasse, fully compostable.

Recyclable Plastic Lids: BPA-free, food-safe, recyclable plastic, offering clarity and durability.



SUGARCANE TRAYS COLLECTION



COMPARTMENT FOOD TRAYS



MVT-023
Dimensions (mm) :
260×210×25
5 Com Tray
CTN QTY 500



MV-T006
Dimensions (mm) :
280×220×45
4 Com Tray
CTN QTY 300



MV-T007
Dimensions (mm) :
281×221×45
5 Com Tray
CTN QTY 300



MVT-T008
Dimensions (mm) :
281×210×45
6 Com Lunch Tray
CTN QTY 300



MVT-027
Dimensions (mm) :
282×220×37.5
5Com Deep Tray
CTN QTY 200



MVT-030
Dimensions (mm) :
317×216×24
5 Com Tray
CTN QTY 500



MVT-022
Dimensions (mm) :
321×221×31
6 Com Tray
CTN QTY 250



MVT-55 & MVT-56
Dimensions (mm) :
248×228×11.5 & 241×221×42.
4-Com Food Tray
CTN QTY 200



MVT-57
Dimensions) :
228.2×174.6×34.6
Dumpling Tray-12 pieces
CTN QTY 300



MVT-59
Dimensions
228.2×174.6×35.6
Dumpling Tray-18 pieces
CTN QTY 300

◆ Material Options for Customized Lids

Pulp Lids: 100% sugarcane bagasse, fully compostable.
Recyclable Plastic Lids: BPA-free, food-safe, recyclable plastic, offering clarity and durability.





MV-T001
Dimensions (mm) :
240x180x30
4D Tray
CTN QTY 250



MV-T002
Dimensions (mm) :
153x153x24
14S Tray
CTN QTY 500



MV-T003
Dimensions (mm) :
200x140x15
2S Tray
CTN QTY 500



MV-T004
Dimensions (mm) :
212x110x15
17S Tray
CTN QTY 500



MV-T005
Dimensions (mm) :
225x165x25
2D Tray
CTN QTY 500



MVT-011
Dimensions (mm) :
212x150x24
TR2D
CTN QTY 500



MV-T007
Dimensions (mm) :
260x115x30
104 Tray
CTN QTY 500



MV-T006
Dimensions (mm) :
155x145x35
14D Tray
CTN QTY 500



MVT-012
Dimensions (mm) :
258x112x26.5
TR104
CTN QTY 500



MVT-013
Dimensions (mm) :
231x297x31
TR9P
CTN QTY 250



MVT-014
Dimensions (mm) :
274x149x18.5
TR10S
CTN QTY 500



MVT-016
Dimensions (mm) :
242x179x28.5
TR4D
CTN QTY 250



MVT-045
Dimensions (mm) :
458x354x35
Large Medical Tray
CTN QTY 100



MVT-008
Dimensions (mm) :
170x115x25
170 Tray
CTN QTY 500



MVT-009
Dimensions (mm) :
176x132x30
176 Tray
CTN QTY 500

M V I E C O P A C K



SUSHI TRAYS



MVT-037
Dimensions (mm) :
164x89x21
Sushi Tray 04
CTN QTY 500



MVT-037
Dimensions (mm) :
221x92x22
Sushi Tray 06
CTN QTY 500



MVT-035
Dimensions (mm) :
165*115*21
Sushi Tray 08
CTN QTY 500



MVT-033
Dimensions (mm) :
185x128x21
Sushi Tray10
CTN QTY 500



MVT-031
Dimensions (mm) :
216x136x20
Sushi Tray15
CTN QTY 500

SUGARCANE PULP SUSHI TRAY

◆ Material Options for Customized Lids

Pulp Lids:

100% sugarcane bagasse, fully compostable.

Recyclable Plastic Lids:

BPA-free, food-safe, recyclable plastic, offering clarity and durability.



SUGARCANE MINI CUPS



MVC-01
 Dimensions (mm)
 Ø62x17
 1OZ Cup
 CTN QTY 2000



MVC-02
 Dimensions (mm) :
 Ø62x30
 2 OZ Cup
 CTN QTY 2000



MVC-06
 Dimensions (mm) :
 Ø70x21
 2 OZ Cup
 CTN QTY 2000



MVC-03
 Dimensions (mm) :
 Ø65x54
 3OZ Cup
 CTN QTY 2500



MVC-03
 Dimensions (mm) :
 Ø75x48
 4 OZ Cup
 CTN QTY 2000



SUGARCANE SOUP CUPS & BOWLS



MVC-29
 Dimensions (mm) :
 Ø90x50
 6OZ Bowl
 CTN QTY 500



MVC-30
 Dimensions (mm) :
 Ø94x55
 8OZ Bowl
 CTN QTY 500



MVC-09
 Dimensions (mm) :
 Ø96x48
 7OZ Cup
 CTN QTY 500



MVC-15
 Dimensions (mm)
 Ø114x45
 8OZ Bowl
 CTN QTY 600



MVC-31
 Dimensions (mm) :
 Ø116x72x63
 12OZ Bowl
 CTN QTY 500



MVC-16
 Dimensions (mm) :
 Ø125x50
 12OZ Soup Cup
 CTN QTY 500



MVC-19
 Dimensions (mm) :
 Ø107x85
 16OZ Soup Bowl
 CTN QTY 400



MVC-32
 Dimensions (mm) :
 Ø116x72x85
 16OZ Soup Cup
 CTN QTY 500



MVC-17
 Dimensions (mm) :
 Ø125x60
 16OZ Soup Cup
 CTN QTY 500

◆ Material Options for Customized Lids

Pulp Lids: 100% sugarcane bagasse, fully compostable.
Recyclable Plastic Lids: BPA-free, food-safe, recyclable plastic, offering clarity and durability.



SUGARCANE PULP HOT DRINK CUPS

Made from 100% biodegradable sugarcane bagasse, these cups are designed for hot and cold beverages, offering a sustainable alternative to single-use plastic. Compatible with custom lids (pulp or recyclable plastic) for a secure, spill-proof fit, they support zero-waste operations without compromising on function.



MVSC-08/12/16
8/12/16OZ
Hot Drink Cup
CTN QTY 1000



MVC-21
Dimensions (mm) :
Ø82×18
80MM Lid
CTN QTY 1000



MVC-22
Dimensions (mm) :
Ø93×20
90MM Lid
CTN QTY 1000



MVC-23
Dimensions (mm) :
Ø84.5×32.6
80MM Lid
CTN QTY 1000



MVC-24
Dimensions (mm) :
Ø93.9×37.1
90MM Lid
CTN QTY 1000



MVC-24
Dimensions (mm) :
220×220×45
4 Com Cup Holder
CTN QTY 300



MVH1-003
Dimensions(mm):
Φ8.8*Φ4*H7.5
160ML Ice Cream Cup
CTN QTY 1000



MVH1-005
Dimensions (mm) :
6*6*H4.5
500ML Ice Cream Cup
CTN QTY 2000



MVH1-005
Dimensions (mm) :
11*6*H3.6
750ML Ice Cream Cup
CTN QTY 2000



MVH1-008
Dimensions (mm) :12.2*
8.8*4.1
7OZ Ice Cream Cup
CTN QTY 1000



MVC-28
Dimensions (mm) :
Ø77×32×48
130ML Cup
CTN QTY 1000



MVC-11
Dimensions (mm) :
Ø120×45
300ML Ice Cream Cup
CTN QTY 1000

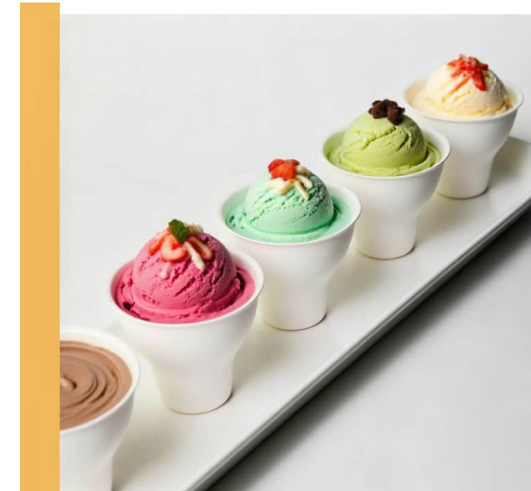


MVC-12
Dimensions (mm) :
Ø120×65
450ML Ice Cream Cup
CTN QTY 700



MVC-14
Dimensions (mm) :
Ø155×80
1000ML Ice Cream Cup
CTN QTY 500

SUGARCANE PULP ICE CREAM CUPS



RECYCLED PAPER CUPS COLLECTION

- ◆ **100% Recyclable**
Water-based coating technology helps reduce plastic waste and supports eco-friendly recycling systems.
- ◆ **Reliable Performance**
Leak-resistant and durable design suitable for both hot and cold beverages.
- ◆ **Custom Branding Support**
OEM printing options available to enhance brand visibility for cafés and takeaway businesses.



Sustainable pulp lids are also available for brands seeking a fully fiber-based packaging solution.



Optional transparent lids provide a clear product display while ensuring a secure, leak-resistant fit.



STEP & GO



RECYCLED PAPER CUPS



01

WHITE PAPER CUPS(SINGLE WALL)

Item No.:

MVSC-4
MVSC-6
MVSC-8
MVSC-8-90
MVSC-10
MVSC-12
MVSC-16
MVSC-22

Size: 4oz/6oz/8oz/10oz/12oz/16oz/22oz
Specification(mm):
62*45*62/80*53*80/80*56*92/90*55*85/90*60*95/90*60*112/
90*59*136/90*60*170
Weight(g): 210~300gsm white paper +PE/PLA/WBBC
CTN PCS: 1000



02

BAMBOO PAPER CUPS(SINGLE WALL)

Item No.:

MVSC-4
MVSC-6
MVSC-8
MVSC-8-90
MVSC-10
MVSC-12
MVSC-16
MVSC-22

Size: 4oz/6oz/8oz/10oz/12oz/16oz/22oz
Specification(mm):
62*45*62/80*53*80/80*56*92/90*55*85/90*60*95/90*60*112/
90*59*136/90*60*170
Weight(g): 210~300gsm bamboo paper +PE/PLA/WBBC
CTN PCS: 1000



03

RIPPLE PAPER CUPS

Item No.:

MVSC-4
MVSC-6
MVSC-8
MVSC-8-90
MVSC-10
MVSC-12
MVSC-16
MVSC-22

Size: 4oz/6oz/8oz/10oz/12oz/16oz/22oz
Specification(mm):
62*45*62/80*53*80/80*56*92/90*55*85/90*60*95/90*60*112/90*59*
136/90*60*170
Weight(g):
210~300gsm paper +PE/PLA/WBBC+250gsm
CTN PCS: 500



04

DOUBLE WALL PAPER CUPS

Item No.:

MVSC-4
MVSC-6
MVSC-8
MVSC-8-90
MVSC-10
MVSC-12
MVSC-16
MVSC-22

Size: 4oz/6oz/8oz/10oz/12oz/16oz/22oz
Specification(mm):
62*45*62/80*53*80/80*56*92/90*55*85/90*60*95/90*60*112/
90*59*136/90*60*170
Weight(g):
210~300gsm paper +PE/PLA/WBBC+250gsm
CTN PCS: 500



- PLA Fully Biodegradable Cold Cup
- PET Cold Drink Cups and Matching Lids

BIO-PLASTIC COLD DRINK CUPS



- RECYCLED PAPER STRAWS -



The Better Choice

- ◆ **No Sogginess, Lasts Longer:** Durable for over 3 hours, no mushy mess.
- ◆ **Comfortable Mouthfeel:** Flexible & smooth for every sip.
- ◆ **All Drinks Friendly:** Works for hot & cold beverages, zero glue.
- ◆ **Greener & Leaner:** Uses 20-30% less paper than standard straws.
- ◆ **Truly Recyclable:** Closes the loop with zero waste (unlike regular paper straws).



NATURAL PULP COMPOSTABLE PAPER STRAWS

AQUEOUS COATING PAPER STRAWS



PLA COLLECTION



MV-520-90

Capacity: 520ml
 Ø90x56x145mm
 Weight: 11g



MV-20oz-90

Capacity: 600ml
 Ø90x56x158mm
 Weight: 12g



MV-22oz-90

Capacity: 630ml
 Ø90x53x178mm
 Weight: 14g&12.5g



MV-24oz-90

Capacity: 660ml
 Ø90x56x176mm
 Weight: 14g&12.5g



MV-12oz-90

Capacity: 360ml
 Ø90x56x103mm
 Weight: 10g



MV-14oz-90

Capacity: 460ml
 Ø90x56x115mm
 Weight: 10g



MV-16oz-90

Capacity: 480ml
 Ø90x50x162mm
 Weight: 10.5g



MV-18oz-90

Capacity: 500ml
 Ø90x56x135mm
 Weight: 11g

PLA COLD CUPS

Made from plant-based material. Custom lids available for leak-proof use. Compostable, eco-friendly alternative to plastic cups.

90mm/95mm/98mm



MV-9oz-98

Capacity: 270ml
 Ø98x630mm
 Weight: 8.5g



MV-12oz-98

Capacity: 500ml
 Ø98x56x103mm
 Weight: 10g&8.5g



MV-14oz-98

Capacity: 460ml
 Ø98x62x105mm
 Weight: 10g



MV-16oz-98

Capacity: 500ml
 Ø98x61x118mm
 Weight: 11g&10g



MV-530-98

Capacity: 650ml
 Ø98x62x120mm
 Weight: 12g&10g



MV-18oz-98

Capacity: 560ml
 Ø98x75x100mm
 Weight: 10g&11g



MV-20oz-98

Capacity: 600ml
 Ø98x61x138.5mm
 Weight: 13g&12g



MV-24oz-98

Capacity: 650ml
 Ø98x61x150mm
 Weight: 14g&13g



MV-09oz-95

Capacity: 270ml
Ø95x55x75mm
Weight: 7.8g



MV-12oz-95

Capacity: 360ml
Ø95x56x105mm
Weight: 10g&8.5g



MV-16oz-95

Capacity: 500ml
Ø95x55x127mm
Weight: 11g&10g



MV-20oz-95

Capacity: 600ml
Ø95x55x150mm
Weight: 12.4g&12g



MV-24oz-95

Capacity: 680ml
Ø95x62x153mm
Weight: 13.7g&13.5g



MV-8oz-117

Capacity: 330ml
Ø117x96x50mm
Weight: 9g&10g



MV-12oz-117

Capacity: 440ml
Ø117x96x59mm
Weight: 11g&12g



MV-16oz-117

Capacity: 600ml
Ø117x96x80mm
Weight: 13g&12g



MV-20oz-117

Capacity: 500ml
Ø117x96x85mm
Weight: 13g&12g



MV-24oz-117

Capacity: 800ml
Ø117x92x115mm
Weight: 16g



MV32oz-117A

Capacity: 1050ml
Ø117x88x143mm
Weight: 20g&18g



MV-32oz-117B

Capacity: 1050ml
Ø117x73x160mm
Weight: 20g&18g



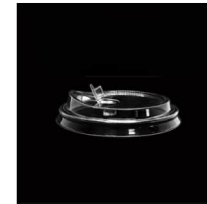
P L A L I D S



PLA Flat Lid



PLA Dome Lid



PLA Sip Lid

◆ Custom PLA lids available in flat, dome, and sip-through styles, with customizable diameters to fit various cup sizes.



PET COLLECTION



MV-89-300U
Capacity: 300ml
Ø89x45x81mm
Weight: 9g
CTN PCS 1000



MV-89-360U
Capacity: 360ml
Ø89x45x92mm
Weight: 10g
CTN PCS 1000



MV-89-400U
Capacity: 400ml
Ø89x45x96mm
Weight: 11g
CTN PCS 1000



MV-89-500U
Capacity: 500ml
Ø89x43x120mm
Weight: 13.5g
CTN PCS 1000



MV-89-700U
Capacity: 700ml
Ø89x45x152mm
Weight: 16.5g
CTN PCS 1000



MV-89-10oz
Capacity: 300ml
Ø89x45x88mm
Weight: 10g
CTN PCS 1000



MV-89-12oz
Capacity: 360ml
Ø89x53x108mm
Weight: 11g
CTN PCS 1000



MV-89-14oz
Capacity: 400ml
Ø89x57x116mm
Weight: 11g
CTN PCS 1000



MV-89-16oz
Capacity: 500ml
Ø89x52x138mm
Weight: 13.5g
CTN PCS 1000



MV-89-420ml
Capacity: 420ml
Ø89x58x108mm
Weight: 11g
CTN PCS 1000



MV-93-420ml
Capacity: 420ml
Ø93x58x110mm
Weight: 11g
CTN PCS 1000



MV-93-480ml
Capacity: 480ml
Ø93x60x116mm
Weight: 13g
CTN PCS 1000



MV-93-540ml
Capacity: 540ml
Ø93x46x134mm
Weight: 14.5g
CTN PCS 1000



MV-93-8OZ
Capacity: 200ml
Ø93x55x65mm
Weight: 7g
CTN PCS 1000



MV-93-9OZ
Capacity: 260ml
Ø93x55x72mm
Weight: 8g
CTN PCS 1000



MV-93-10OZ
Capacity: 300ml
Ø93x58.5x92mm
Weight: 10g
CTN PCS 1000



MV-93-12OZ
Capacity: 360ml
Ø93x58.5x107mm
Weight: 11g
CTN PCS 1000

**PET
COLD
CUPS**



MV-95-360ml
Capacity: 360ml
Ø95x49x87mm
Weight: 10g
CTN PCS 1000



MV-95-12oz
Capacity: 360ml
Ø95x55x104mm
Weight: 11g
CTN PCS 1000



MV-95-14oz
Capacity: 400ml
Ø95x56x107mm
Weight: 12g
CTN PCS 1000



MV-95-16oz
Capacity: 500ml
Ø95x60x123mm
Weight: 13.5g
CTN PCS 1000



MV-95-22oz
Capacity: 650ml
Ø95x61x144mm
Weight: 16.5g
CTN PCS 1000



MV-T95-12oz
Capacity: 360ml
Ø95x58x108mm
Weight: 12g
CTN PCS 1000



MV-T95-16oz
Capacity: 500ml
Ø95x63x122mm
Weight: 15g
CTN PCS 1000



MV-T95-20oz
Capacity: 650ml
Ø95x60x143mm
Weight: 16g
CTN PCS 1000

MVI ECOPACK



MV-98-12oz
Capacity: 360ml
Ø98x55x107mm
Weight: 12g
CTN PCS 1000



MV-98-12D
Capacity: 360ml
Ø98x57x109mm
Weight: 12g
CTN PCS 1000



MV-98-14oz
Capacity: 400ml
Ø98x57x105mm
Weight: 12g
CTN PCS 1000



MV-98-14B
Capacity: 400ml
Ø98x56x105mm
Weight: 14g
CTN PCS 1000



MV-98-360ml
Capacity: 360ml
Ø98x57x89mm
Weight: 10g
CTN PCS 1000



MV-107-30oz
Capacity: 850ml
Ø107x68x162mm
Weight: 20g
CTN PCS 500



MV-107-32oz
Capacity: 1000ml
Ø107x178mm
Weight: 20g
CTN PCS 500



MV-107-32oz
Capacity: 1000ml
Ø107x63.5x177mm
Weight: 20g
CTN PCS 500



MV-117-32oz
Capacity: 1020ml
Ø117x84x146mm
Weight: 23g
CTN PCS 500



MV-98-420ml
Capacity: 420ml
Ø98x59x109mm
Weight: 11.5g
CTN PCS 1000



MV-98-980B
Capacity: 500ml
Ø98x62x126mm
Weight: 13.5g
CTN PCS 1000



MV-98-9806B
Capacity: 500ml
Ø98x60x123mm
Weight: 15g
CTN PCS 1000



MV-98-9802B
Capacity: 500ml
Ø98x62x122mm
Weight: 13.5g
CTN PCS 1000



MV-98-9802C
Capacity: 500ml
Ø98x64.5x121mm
Weight: 13.5g
CTN PCS 1000



MV-117-8oz
Capacity: 320ml
Ø117x42x98mm
Weight: 11g
CTN PCS 500



MV-117-12oz
Capacity: 400ml
Ø117x56x96mm
Weight: 11g
CTN PCS 500



MV-117-14oz
Capacity: 475ml
Ø117x68x92mm
Weight: 12g
CTN PCS 500



MV-117-16oz
Capacity: 570ml
Ø117x79x92mm
Weight: 15g
CTN PCS 500



MV-117-24oz
Capacity: 775ml
Ø117x108x89mm
Weight: 20g
CTN PCS 500



MV-98-520
Capacity: 520ml
Ø98x61x125mm
Weight: 13.5g
CTN PCS 1000



MV-98-9801
Capacity: 600ml
Ø98x60x145mm
Weight: 16g
CTN PCS 1000



MV-98-22oz
Capacity: 650ml
Ø98x73x129mm
Weight: 16.5g
CTN PCS 1000



MV-98-9805
Capacity: 700ml
Ø98x59x153mm
Weight: 16.5g
CTN PCS 1000



MV-98-18oz
Capacity: 500ml
Ø98x71x98mm
Weight: 13.5g
CTN PCS 1000



P E T L I D S



MV-P-FL01
PET Flat Lid
Ø89/92/95/98 mm
Weight: 2g/2.3g/2g/2.8g
CTN PCS:1000



MV-P-FL02
PET Flat Lid
Ø95/98 mm
Weight: 3.5g/3.8g
CTN PCS:1000



MV-P-FL03
PET Flat Lid
Ø105 mm
Weight:3.5g
CTN PCS:1000



MV-P-FL04
PET Flat Lid
Size: 107 mm
Weight: 4g
CTN PCS:1000



MV-P-FL05
PET Flat Lid
Ø117 mm
Weight: 5g
CTN PCS:1000



MV-P-FL06
PET Flat Lid
Ø117mm
Weight: 6g
CTN PCS:1000



MV-P-DL01
PET Sipper Lid
Ø98 mm
Weight:5g
CTN PCS:1000



MV-P-DL02
PET Sipper Lid
Size: 90 mm
Weight: 3g
CTN PCS:1000



PET COLD CUP LIDS

PET COLLECTION



MV-P-DL03

PET Sipper Lid
 Ø98mm
 Weight: 5g
 CTN PCS:1000



MV-P-DL04

PET Sipper Lid
 Ø90mm
 Weight: 3g
 CTN PCS:1000



MV-P-DL05

PET Sipper Lid
 Ø92mm
 Weight: 3.5g
 CTN PCS:1000



MV-P-DL06

PET Sipper Lid
 Ø98mm
 Weight: 4g
 CTN PCS:1000



MV-P-DL06B

PET Sipper Lid
 Ø98mm
 Weight: 4.5g
 CTN PCS:1000



MV-P-DL07

PET Sipper Lid
 Ø95/98mm
 Weight:3.5g/4g
 CTN PCS:1000



MV-P-FL08

PET Flat Lid
 Ø98 mm
 Weight:4g
 CTN PCS:1000



MV-P-FL09

PET Flat Lid
 Ø107mm
 Weight:4g
 CTN PCS:1000



MV-P-FL10

PET Flat Lid
 Ø109mm
 Weight:6.8g
 CTN PCS:1000



MV-P-BL01

PET Bowl Lid
 Ø150/165/185mm
 Weight: 7/9/10g
 CTN PCS:300



PET DEMO CUP LIDS



MV-P-DL01

PET Demo Lid
 Ø89/92/95/98
 Weight:3g/3g/3g/3.8g
 CTN PCS:1000



MV-P-DL02

PET Diamond Lid
 Ø90/98mm
 Weight: 3g/3.8g
 CTN PCS:1000



MV-P-DL03

PET Demo Lid
 Ø90/95/98mm
 Weight: 3.5g/3.5g/4g
 CTN PCS:1000



MV-P-DL02

PET Demo Lid
 Ø117mm
 Weight: 6g
 CTN PCS:5000





AQUEOUS COATING PAPER STRAW



6mm Paper Straw

Best for water, juice & soda
Length Customized:130-260mm



8mm Paper Straw

Optimized for iced coffee, lattes, smoothies.
Length Customized:130-260mm



10mm Paper Straw

Built for thick shakes, drinks with chewy toppings.
Length Customized:190-260mm



12mm Paper Straw

Best for thick milkshakes, chunky fruit teas, and extra-large toppings.
Length Customized:190-260mm

M V I E C O P A C K



8*200mm

Weight: 1g
CTN PCS 8000



8*200mm

Weight:1g
CTN PCS:8000



NATURE PULP

Sugarcane Pulp Straws

MV-SCS08

Available options = Nature & White color

Available in the diameter = 8MM/12MMM & Stock Lengths 200MM/230MM



Bamboo Fiber Straws

MVBS-12

Available options = Nature & White color
Available in the diameter = 8MM/12MMM & Stock Lengths 200MM/230MM



12*230mm

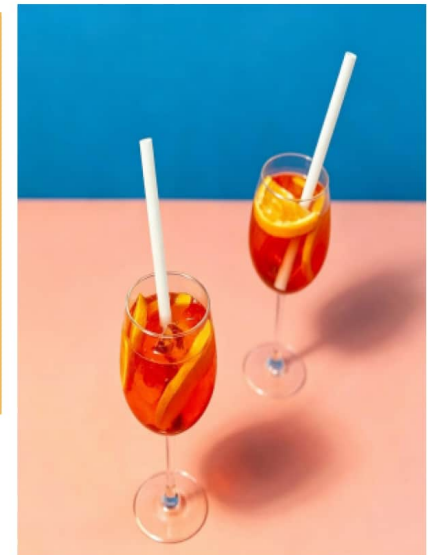
Weight:2.9g
CTN PCS:3000



12*230mm

Weight:2.9g
CTN PCS:3000

PULP STRAWS



CORN STARCH COLLECTION



Item No.	MVH-01
Description	one com lunch box 9x6"
Material	corn starch based
Size(mm)	240X175X65
pcs/ctn	200



Item No.	MVH-02
Description	one com lunch box 7x5"
Material	corn starch based
Size(mm)	185X135X50
pcs/ctn	600



Item No.	MVH-03
Description	two coms lunch box
Material	corn starch based
Size(mm)	240x175x65
pcs/ctn	200



Item No.	MVH-04
Description	hamburger box
Material	corn starch based
Size(mm)	145X145X75
pcs/ctn	500



Item No.	MVH-05
Description	8" lunch box
Material	corn starch based
Size(mm)	205X205X70
pcs/ctn	150



Item No.	MVH-06
Description	9" lunch box
Material	corn starch based
Size(mm)	235X235X75
pcs/ctn	150



Item No.	MVH-07
Description	8" 3coms lunch box
Material	corn starch based
Size(mm)	205X205X70
pcs/ctn	150



Item No.	MVH-08
Description	9" 3coms lunch box
Material	corn starch based
Size(mm)	235X235X75
pcs/ctn	150



Item No.	MVH-10
Description	4coms container
Material	corn starch based
Size(mm)	260X200X35
pcs/ctn	500

MVEGOPACK



Item No.	MVH-11
Description	5coms container
Material	corn starch based
Size(mm)	260X200X37 / 263X205X10
pcs/ctn	500



Item No.	MVH-12
Description	6coms container
Material	corn starch based
Size(mm)	300*225*32
pcs/ctn	320



Item No.	MVH-13
Description	10" Pizza box
Material	corn starch based
Size(mm)	Φ310X46
pcs/ctn	100



Item No.	MVH-14
Description	9x5" one com lunch box
Material	corn starch based
Size(mm)	218*125*75
pcs/ctn	500



Item No.	MVH-15
Description	6" hamburger box
Material	corn starch based
Size(mm)	155*155*80
pcs/ctn	500



Item No.	MVH-16
Description	8" 3coms lunch box
Material	corn starch based
Size(mm)	205*200*70
pcs/ctn	200



Item No.	MVH-17
Description	8" single com lunch box
Material	corn starch based
Size(mm)	205*200*70
pcs/ctn	200



Item No.	MVH-18
Description	8" 2 com lunch box
Material	corn starch based
Size(mm)	200*155*60
pcs/ctn	300



CORN STARCH BASED PLATES



Item No.	MVP-01
Description	6" plate
Material	corn starch based
Size(mm)	Φ155X15
pcs/ctn	1000



Item No.	MVP-02
Description	7" plate
Material	corn starch based
Size(mm)	Φ180X20
pcs/ctn	800



Item No.	MVP-03
Description	8" plate
Material	corn starch based
Size(mm)	Φ210X20
pcs/ctn	500



Item No.	MVP-04
Description	9" plate
Material	corn starch based
Size(mm)	Φ230X25
pcs/ctn	500



Item No.	MVP-05
Description	10" plate
Material	corn starch based
Size(mm)	Φ255X25
pcs/ctn	300



Item No.	MVP-06
Description	10" 3coms plate
Material	corn starch based
Size(mm)	Φ255X25
pcs/ctn	300



Item No.	MVP-07
Description	oval plate
Material	corn starch based
Size(mm)	Φ300X25
pcs/ctn	250



Item No.	MVP-08
Description	tray
Material	corn starch based
Size(mm)	238X173X25
pcs/ctn	800



Item No.	MVP-09
Description	tray
Material	corn starch based
Size(mm)	190X140X18
pcs/ctn	1000



Item No.	MVP-10
Description	tray
Material	corn starch based
Size(mm)	197X127X15
pcs/ctn	1000



Item No.	MVP-11
Description	tray
Material	corn starch based
Size(mm)	210X165X30
pcs/ctn	500



Item No.	MVP-14
Description	food box
Material	corn starch based
Size(mm)	167X134X50
pcs/ctn	500



Item No.	MVP-15
Description	square box
Material	corn starch based
Size(mm)	160x160x60
pcs/ctn	500



Item No.	MVP-16
Description	oval container
Material	corn starch based
Size(mm)	200X140X50
pcs/ctn	500

MVIECOPACK

CORN STARCH BASED CUPS



Item No.	MVB-01
Description	6.5oz / 150ml cup
Material	corn starch based
Size(mm)	Φ75X80
pcs/ctn	2000



Item No.	MVB-02
Description	8oz/250ml cup
Material	corn starch based
Size(mm)	Φ80X90
pcs/ctn	2000



Item No.	MVB-03
Description	230ml ice cream cup
Material	corn starch based
Size(mm)	Φ92X50
pcs/ctn	1000



Item No.	MVB-05
Description	12oz/350ml cup
Material	corn starch based
Size(mm)	Φ80X108
pcs/ctn	1000

CORN STARCH CUTLERY



Item No.	MVC-02
Description	6" fork
Material	corn starch based
Size(mm)	155X25
pcs/ctn	1000



Item No.	MVC-03
Description	6" spoon
Material	corn starch based
Size(mm)	145X30
pcs/ctn	1000



Item No.	MVC-05
Description	6.5" knife
Material	corn starch based
Size(mm)	165X20
pcs/ctn	1000



Item No.	MVC-12
Description	7" soup spoon
Material	corn starch based
Size(mm)	145X37
pcs/ctn	1000



Item No.	MVC-14
Description	Yogurt spoon
Material	corn starch based
Size(mm)	150X35
pcs/ctn	1000



Item No.	MVC-15
Description	Ice cream spoon
Material	corn starch based
Size(mm)	140X28
pcs/ctn	1000



Item No.	MVC-06
Description	6.5" fork
Material	corn starch based
Size(mm)	170X27
pcs/ctn	1000



Item No.	MVC-07
Description	6.5" spoon
Material	corn starch based
Size(mm)	165X35
pcs/ctn	1000



Item No.	MVC-08
Description	5" spoon
Material	corn starch based
Size(mm)	120X28
pcs/ctn	1000



Item No.	MVC-17
Description	Chinese spoon
Material	corn starch based
Size(mm)	110X37
pcs/ctn	5000



Item No.	MVC-18
Description	Large spork
Material	corn starch based
Size(mm)	190*45
pcs/ctn	1000



Item No.	MVC-20
Description	small spork
Material	corn starch based
Size(mm)	102x28
pcs/ctn	2000



Item No.	MVC-09
Description	7" knife
Material	corn starch based
Size(mm)	190X20
pcs/ctn	1000



Item No.	MVC-10
Description	7" fork
Material	corn starch based
Size(mm)	180X25
pcs/ctn	1000



Item No.	MVC-11
Description	7" spoon
Material	corn starch based
Size(mm)	160X30
pcs/ctn	1000



RECYCLED CRAFT PAPER CONTAINERS

Eco-Friendly Material

Made from renewable kraft paper with a natural and sustainable appearance.

Leak & Grease Resistant

Durable construction helps prevent leaks and handles oily or saucy foods with ease.

Versatile Food Packaging

Ideal for takeaway, meal prep, delivery, and restaurant food packaging needs.



01



CRAFT NOODLE CONTAINERS



02



CRAFT PACKING BOXES





26oz-Round



32oz-Round



16oz-Square



26oz-Square



32oz-Square

ITEM	26oz-Round Noodle Box	32oz-Round Noodle Box	16oz-Square Noodle Box	26oz-Square Noodle Box	32oz-Square Noodle Box
SIZE	129*90*97*151	133*90*112*171	153*120*65	102*90/80*67/103	113*94/88*69/108
CTN PCS	1000	1000	500	500	500



#1



#5



#8



#2



#3

ITEM	#1 800ml Craft food box	#5 1000ml Craft food box	#8 1200ml Craft food box
SIZE	113*90*64	153*120*49	153*120*65
CTN PCS	50*6	50*6	50*6

ITEM	#2 1500ml Craft food box	#3 2000ml Craft food box
SIZE	196*140*48	196*140*65
CTN PCS	50*6	50*6

02

CRAFT SOUP & MEAL CONTAINERS



BOWLS SERIES-A

ITEM	1300ml Bowl	1000ml Bowl	1250ml Bowl	1500ml Bowl
SIZE	165*143*75.5	165*142*66	182*157*66	182*160*4.5
CTN PCS	600	600	600	600

BOWLS SERIES-B

ITEM	500ml Bowl	750ml Bowl	1000ml Bowl
SIZE	150*130*45.5	150*130*60	150*127*75
CTN PCS	600	600	600



SOUP BUCKETS

ITEM	8oz Bucket	12oz Bucket	16oz Bucket	26oz Bucket	32oz Bucket
SIZE	96*75*61	96*75*80	96*73*109	110*90*70	115*91*111
CTN PCS	1000	1000	1000	1000	500

EXTENDED RANGE

Beyond packaging essentials — extending quality into every detail of your sustainable brand.



Paper Napkins & Tissues

- Food-grade safe, 100% virgin pulp
- Exceptional absorbency & softness
- Available in multiple sizes & plies

Aluminum Containers

- Food-grade aluminum foil, sturdy & recyclable
- Exceptional absorbency & softness
- Available in multiple sizes & plies



Baking Paper & Bags

- Silicone-coated for non-stick performance
- Even heat distribution for perfect baking
- Greaseproof & easy food release

Corrugated Picnic & Gift Boxes

- Crafted from 100% recyclable natural kraft paper
- Robust corrugated build ensures safe product packaging
- Premium appearance ideal for retail display and gift packaging



MY ECO PACK

MVI'S TERMS & CONDITIONS

Sustainable tableware made from renewable materials, with OEM/ODM support and global logistics. Your partner for green dining solutions.



Order MOQ

- MOQ is determined on a per-product basis, tailored to the specific item, production process, and order configuration.



Order Processing

- All confirmed orders are processed within 24 hours of receipt, with a formal order confirmation issued for your records.



Delivery Terms

- We offer flexible delivery solutions, including DDP (Delivered Duty Paid) for key markets, to simplify your supply chain logistics.



Order Acceptance

- A purchase proposal is only considered binding once it has been confirmed in writing by mviecopack. No verbal agreements will be recognized.



Retention of Title

- All goods remain the property of mviecopack until full payment of the invoice has been received and cleared.



Product Tolerances

- The following industry-standard tolerances apply to all orders:
 - a. Quantity: $\pm 10\%$ on ordered volumes
 - b. Physical specifications (weight, dimensions, grammage): $\pm 5\%$ tolerance



Force Majeure

- Mviecopack is not liable for delays or failures to fulfill orders due to events beyond our reasonable control, including but not limited to strikes, lockouts, wars, natural disasters, power outages, and supply chain disruptions.



Claims & Defects

- Any quantity discrepancy must be reported within 14 days of goods arrival. In addition, MVIECOPACK shall bear full liability and supply replacement items as compensation for any manufacturing defects identified during your downstream retail operations.



Monica Mo
Managing director
WhatsApp +86 15177781985





 www.mvielopack.com

NO.665 WUXIANG AVE, NANNING, GUANGXI, CHINA

+86 771-3182966



CONTACT US

