

FEBRUARY 7TH, 2026
13TH ANNUAL BULL SALE

**OFFERING 184 COMING 2 YEAR OLD
SIMANGUS & ANGUS BULLS**

STOCKMEN'S SOURCE

Real Bulls For Real Stockmen

Saturday, February 7th, 2026

Join us at our heated indoor facility at
8405 W. Medicine Rd. Wellfleet, NE

Directions

From Dickens, NE:

6.7 East to Wagon Trail Rd, 3 Miles South to Medicine Rd, .4 miles East, then North 0.4 miles up the driveway.

From Hwy 83/23 Junction approximately 20 miles South of North Platte, NE:

6 Miles West to Wagon Trail Rd. 3 miles south to Medicine Rd. 0.4 miles East. Then North 0.4 miles up the driveway.

Bull viewing begins at Noon CST

Auction begins at 3 pm CST

Enjoy refreshments before and during the sale. Please plan on joining us for supper and socializing after the sale.

Auctioneer

Kiley Roundtree 308-340-1718

Sale Help

Preston Smith 308-883-8330

Thad McDermott 308-530-4806

Justin Christner 308-530-6851

Sale Contacts

Jeremy 308-325-3287 Gail 402-469-7775

Travis 308-883-6781

jeremy@broken-mranch.com

tchrisman@chrismancattleservices.com

www.ssbeefbulls.com

www.facebook.com/stockmenssource

Check out website or Facebook for videos and updated information prior to sale day.

Especially the in the case of bad weather.

Viewing

BULLS WILL NOT BE RUN THROUGH A RING ON SALE DAY, BUT WILL BE PENNED AT THE SALE SIGHT FOR CLOSE INSPECTION.

The videos will be available prior to the sale via a link on our website around January 20th. If you would like to view the bulls in person please make arrangements in advance with Jeremy or Travis.

Settlement & Delivery

A minimum of 50% must be paid sale day. Bull delivery begins in March. Bull delivery will occur between March 15 & April 15, we recommend you turn them right back out with your herd bulls and let them establish a pecking order.

Free delivery for the first 500 miles or on total purchases totaling \$15,000 or more into the lower 48, beyond that it will be at cost.

Health

All bulls have received a complete parasite control and modified live vaccination program. Any bulls utilized in our herds for cleanup service will have tested negative for Trich. Complete breeding soundness evaluations will be done shortly before delivery on all of the bulls. All vet work will be performed by Dr. Charles Martin or Southwestern Veterinary Services.

Performance Information

EPDs are current as of 1/1/2026 and are from either the American Angus Association or American Simmental Association. Updated EPDs can be viewed on most bulls at www.angus.org or www.simmental.org by entering the bull's registration number.

All announcements sale day take precedence over what is printed in this book

Genomically Enhanced EPDs

All bulls selling have had DNA submitted to their respective breed associations for genomic evaluation. This increases the EPD accuracy to give you, the buyer, more certainty in your decisions.

Retained Interest

We reserve the right to 1/2 semen interest in all bulls selling. The 1/2 semen interest is a semen revenue sharing interest only with 100% of the bull's salvage value belonging to the buyer.

Liability

All persons attending this sale do so at their own risk. The Martin & Chrisman families and Broken Bar M Ranch, LLC assume no liability for property loss or accidents that may occur.

Lodging

Hotels are available in Wallace, Curtis, North Platte, or McCook, please contact us for suggestions

Absentee

If you are interest in any bull(s), but are unable to attend, please contact Stockmen's Source beforehand and we can direct you to someone who will handle your bidding carefully. Or pre-register at www.dvauction.com to bid live online.

Please be aware that cell phone service is not reliable at the sale site.

Auction Format - Quiet Auction

Sale order will be posted prior to the sale, bulls will continue to be sold in the same quiet style we have used in the past. We expect the sale to be transparent, quick, and easy to follow.



Bidding available through
CattleUSA.
For buyer approval contact
Preston Smith
(308-883-8330)
www.cattleusa.com
at least 24 hours in advance of the auction.

This sale will be broadcast live on the internet.

DVAuction
Broadcasting Real-Time Auctions
Real time bidding & proxy bidding available.

Ryan Large - DVAuction
308-340-9859 | www.dvauction.com



JEREMY, GAIL, CHASE, REGAN, & KAITLIN MARTIN



TRAVIS, LENA, & HENRY CHRISMAN

WOW – it has been a wild ride in 2025. As I write this we are still enjoying the best of times and look forward to seeing that continue. As always, we do not take your business for granted and encourage you to have high expectations of your purchases. Thank You to the best buyers, neighbors, and friends we could ask for. We encourage you to enjoy the good times and prepare your business and your cowherds to thrive on the other side of the cattle cycle.

The offering in this catalog represents 25+ years of commitment to a systems mindset focused on producing cows that do their jobs well with minimal intrusion. Just as importantly, we continue to push towards our goal of maximizing the production of high quality beef measured by carcass weight and grid value. We strive to purchase both feeders and replacement heifers out of these bulls annually, and to that end we aggressively cull these bulls knowing we could potentially be the buyer of their progeny.

The Angus bulls are registered with the American Angus Association, and their EPDs and genomic data are current as of the week of December 29. The SimAngus bulls are registered with the American Simmental Association, and thus their EPDs compare directly to one another, but not directly with the registered Angus bulls. These bulls have never been pampered, fitted, or fed hard – just like our cowherds. They are ready for heavy use. We look forward to seeing you on sale day and would welcome the chance to show you around before the sale.

Please give us a call if we can be of service – and Thank You again for your interest and your support



Carefully Bred

Our mission is to provide our customers with trouble-free beef genetics that are profitable and low risk. To this end we strive to produce fertile, easy fleshing cattle with muscle and performance. Our cows are expected to calve easily, have strong mothering instincts, re-breed in a 45-day season, and raise a heavy, healthy calf year after year. We do not believe in trimming feet, milking out cows, or putting up with disposition problems – we do not have time for it and doubt you do either. Furthermore, we remain focused on maintaining feedlot performance and packer acceptability. While we may not use all of the trendy new bulls, you can be assured the genetics we provide will be time-tested and have met our approval. We expect the daughters of our bulls to perform for you as the bulls' mothers have for us, and we expect their steer progeny to be good-doing feeder cattle that generate a lot of buyer interest. Simply stated, our genetics are designed to save you time, labor, and headaches and make you more money.

Correctly Developed

In keeping with our belief that problems are a waste of time, we strive to develop these bulls in a manner which will ensure their libido, soundness, and longevity through years of service. They have never been creep-fed. We emphasize grazing the bulls whenever possible. If dry lot is a must, we grow the bulls on high-roughage, low-starch rations with adequate protein and energy to have them ready to breed cows – but without getting them too fat. Recent research conducted by Dr. Rick Funston, UNL, proves that longevity of heifers increases with more extensive development programs and we believe the same is likely true for bulls. Having developed our heifers this way for over 10 years, we can certainly attest to the value of this type of system. We know these bulls will tend to business because we use them ourselves, and because we hear from you that the bulls are high-libido breeding bulls that get the job done. We expect them to lose some weight during the breeding season, but they won't simply melt, they will work it off breeding cows – and more importantly they will last a long time.

Completely Guaranteed

Our guarantee is simple, we stand behind the genetics and breeding soundness of our bulls 100% for the first breeding season. If a genetic issue surfaces or if the bull is unable to settle cows you will get full credit, a replacement bull, or your money back. If the loss is due to gross negligence or an act of God (lightning) we are not responsible. Please notify us of any issues or potential issues as soon as possible after they occur. If you ask our past customers I think you will find that we have been very fair and easy to work with in this regard. Whether you are a valued past customer or looking at our bulls for the first time, we want to thank you for your consideration. If you would like to discover more about the cattle that made Stockmen's Source Beef Bulls, please check out our websites above for more information and photos. We want to be your SOURCE for problem free, profit focused beef bulls.

We Value Your Business

5% Discount for purchase of multiple bulls

5% Discount if you bought a bull last year | Discounts are additive

Calving Ease Score Key

- ★ Recommend for cows, we are comfortable using any of these bulls to breed cows for their 2nd calf or more.
- 2★ Recommended for highly supervised heifers or if you desire to reduce birthweight in your cowherd; generally speaking if you like using lower birth weight bulls on your cows we recommend 2 Star Bulls.
- 3★ Recommended for heifers in most situations, heifers bred to these bulls should calve minimal difficulty.
- 4★ Elite calving ease bulls, if your heifers calve with minimal supervision these are the bulls your should select from.

Turn Key Insemination Services

With a 21 year track record and 10,000 head serviced in 2025 alone, we have the experience to get the job done right.

Our portable breeding barns afford both people and cattle a low stress experience and allow us to come to your pasture or pens. Please give us a call now to visit about how a planned synchronization and A.I. program can positively impact your bottom line starting this spring.



**ABS - Independent Semen
Sales Representative**
Travis Chrisman • 308-883-6781
www.chrismancattleservices.com



Explanation of Terms

CAUTION: EPD's on Angus Bulls CANNOT be directly compared to EPD's on SimAngus Bulls. They are calculated separately by each association.

Calving Ease Direct (CED), is expressed as a difference in percentage of unassisted births, with a higher value indicating greater calving ease in first-calf heifers. It predicts the average difference in ease with which an sire's calves will be born when he is bred to first-calf heifers.

Birth Weight EPD (BW), expressed in pounds, is a predictor of a sire's ability to transmit birth weight to his progeny compared to that of other sires.

Weaning Weight EPD (WW), expressed in pounds, is a predictor of a sire's ability to transmit weaning growth to his progeny compared to that of other sires.

Yearling Weight EPD (YW), expressed in pounds, is a predictor of a sire's ability to transmit yearling growth to his progeny compared to that of other sires.

Calving Ease Maternal (CEM or MCE), is expressed as a difference in percentage of unassisted births with a higher value indicating greater calving ease in first-calf daughters. It predicts the average ease with which a sire's daughters will calve as first-calf heifers when compared to daughters of other sires.

Maternal Milk EPD (Milk), is a predictor of a sire's genetic merit for milk and mothering ability as expressed in his daughters compared to daughters of othersires. In other words, it is that part of a calf's weaning weight attributed to milk and mothering ability.

Cow Energy Value (\$EN), expressed in dollar savings per cow per year, assesses differences in cow energy requirements as an expected dollar savings difference in daughters of sires. A larger value is more favorable when comparing two animals (more dollars saved on feed energy expenses). Components for computing the cow \$EN savings difference include lactation energy requirements and energy costs associated with differences in mature cow size.

Stayability (STAY), expressed as a difference in percentage of daughters remaining in the cowherd at 6 years of age, with a higher value indication greater fertility and longevity.

Carcass Weight EPD (CW), expressed in pounds is a predictor of the differences in hot carcass weight of a sire's progeny compared to progeny of other sires.

Marbling EPD (Marb), expressed as a fraction of the difference in USDA marbling score of a sire's progeny compared to progeny of other sires.

Ribeye Area EPD (REA), expressed in square inches, is a predictor of the difference in ribeye area of a sire's progeny compared to progeny of other sires.

Fat Thickness EPD (Fat), expressed in inches, is a predictor of the differences in external fat thickness at the 12th rib (as measured between the 12th and 13th ribs) of a sire's progeny compared to progeny of other sires. We realize there are additional EPDs and indexes available, and would be glad to share this information with you for any of the bulls. The traits listed in the catalog are the individual traits most economically important to the majority of our customers.

A Word on Indexes

You may be wondering why we do not print highly publicized indexes such as API (All Purpose Index), TI (Terminal Index) or \$B (Beef Value). We do not believe that these selection tools are a bad thing, however we do feel that they are overly simplistic. For example the API assumes that every bull is mated to first calf heifers, therefore it is heavily weighted on calving ease. Most of our customers have large enough herds that they do not mate heifers and cows in the same pasture, so API is a flawed index for them to use. Selecting bulls for high API across your entire cow herd will sacrifice a lot of payweight on your steer calves if done for multiple generations. Terminal Index and \$Beef are simple terminal indexes, and we feel that it is best to let everyone determine what levels of performance and carcass traits suit them best. We have paid, and continue to pay, plenty of tuition feeding cattle and think the TI and \$B weight marbling too heavily without enough emphasis on carcass weight – keep in mind that is just our opinion, but we do sell every head of our fat cattle on a grid.

EPD's – How We Use Them

EPDs are available for making informed selection decisions. By definition they are EXPECTED differences, not KNOWN differences. They are not a guarantee of results. We place more confidence in the EPDs on high accuracy progeny proven bulls that we consider and eventually use. We seek out A.I. sires that are proven by actual carcass data to sire high carcass weight relative to mature daughter weight. You will see bulls that fit these criteria stacked in our pedigrees including EXT, Power Alliance, Emblazon, Black Cedar (sire of Full Bore), Open Range, Dash, Tanker, and Trinity among others. Beyond that we look for cattle that will offer good ribeye and muscling relative to carcass weight. Fat and light muscled carcasses (YG 4's and 5's) have become a real problem and we want our genetics to become part of the solution. Of course calving ease and marbling also receive careful consideration, but to a little lesser extent, because Angus cattle already do this really well. After we have identified the proven A.I. sire lines we want to utilize we then move forward by using sons of those bulls out of our best cows that are older and proven in our systems. As a result of the age of dam, the EPD's are usually much less than that of a young unproven cow. Most of the industry has let EPD selection become the "Holy Grail" of supposed genetic improvement without even realizing it has stacked several generations of young and unproven bulls and cows. We have much more confidence in bulls out of our proven problem-free cows regardless of EPD numbers. When making your selections consider all of the available information, trust your eyes, trust your head and buy a good bull from a breeder who manages a cowherd like you manage yours.

Breed Average EPD's

Angus				SimAngus			
CED	BW	WW	YW	CED	BW	WW	YW
6	1.2	62	110	12	.2	76	117
CE Score	MCE	Milk	\$EN	CE Score	MCE	Milk	STAY
	8	26	-14		6.8	24	14.6
CW	Marb.	RE	Fat	CW	Marb.	RE	Fat
46	.58	.59	.014	52	.56	.67	-.040

Note: Dam ratios may be a combination of records kept by the AAA and ASA as we used the AAA to calculate ratios on our SimAngus bulls from 2013-2015

BR - Birth Weight Ratio | NR - Nursing (weaning weight) Ratio | YR - Yearling Weight Ratio



Herd Management

SPRING



We manage our cows as cost-effectively as we can, no extra equipment and no creep feed. Our cows and heifers are calved in quarter section or bigger pastures and graze Sandhills range for the summer, where they are A.I. bred using a timed breeding system then exposed to clean up bulls for 45-50 days. They consistently breed up in the mid 90s.



Our cows are rotationally grazed over the summer on Sandhills range. We handle them horseback, mostly, and the bulk of them go through the corrals at least three times in the summer for A.I. where we handle them on foot as well. They even get moved with a dog and side by side once in a while, so they have seen about everything at some point or another.



After being fence-line weaned, the cows move to corn stalks from November to late March and are not supplemented until mid to late January, then we use a little alfalfa for protein supplement. Bred heifers we usually start supplementing with a little alfalfa or DDG, depending on cost, in mid-December.



The weaned calves winter on dormant range and corn stalks and are supplemented with DDG. They graze in groups of 200 or larger and are exposed to the same grazing conditions they will experience every winter the rest of their life.



The yearling bulls graze summer range, then dormant range before moving to the bull traps in late October where they are fed hay, DDG, and soybean hulls prior to the sale. We keep the water and the hay ¼ to ½ mile apart to keep them sound and in shape.



The end result, a pair of bulls right after completing their first breeding season for valued customer Kevin Petersen, I saw these bulls last spring as 6 year-olds weighing over a ton and looking impressive.

FALL



Our Fall Cows and heifers are calved on native range and checked once daily. This year we only observed one calf being born. This helps us to select for true calving ease, vigor, and maternal intelligence. A short 50 day breeding season after AI helps us select for fertility. It is rare for us to ever see a calf being born.



The fall calving pairs go from fall range to cornstalks in November. There they are supplemented alfalfa through January. After that and until weaning in April they are supplemented very minimally or not at all depending on weather. They were weaned in a dry lot situation and then summered in rough canyon pasture.



After coming off pasture in September the fall born bulls were fed a ration of ground cane hay, WDG and corn silage. As soon as cornstalks became available they are turned out to graze and are supplemented with DDG and cracked corn. We feed them enough to observe genetic differences in gain-ability, but never enough to negatively impact their overall health or soundness. The end result is a breeding athlete that will hold up to more seasons of use than most.



Casino Constable T34

Casino Constable T34

Age 6 | Angus

Constable is a Capitalist 316 son out of one of the more famous Angus cows in the world. His dam has produced some of the most notable herdsires of this generation. We liked our 316 progeny and think the Constables offer a similar build with more volume, muscle, and docility. Strong on carcass traits, he is a unique combination of figures and phenotype. Our Constable daughters in production are easy fleshing cows with outstanding rib shape and very good udder quality.

	CED	BW	WW	YW	CEM	Milk	SEN	CW	Marb	RE	FAT
EPD	2	2.3	81	135	6	20	-15	53	.97	.85	.022
%Rank	80%	75%	20%	25%	70%	85%	45%	50%	25%	30%	65%



1 JGM Marquis 4C3

AAA 21428825 | ANGUS | BD 4/10/2024 | SC: 38CM

LD CAPITALIST 316	CED	BW	WW	YW
CASINO CONSTABLE T34	3	.3	58	100
ELBANNA OF CONANGA 1209	CE Score	CEM	Milk	\$EN
CONNEALY STIMULUS 8419	★	5	38	-2
JGM QUEEN MOTHER 8A10	CW	Marb.	RE	Fat
JGM QUEEN MOTHER 2C25	36	.96	.47	.01
COLE CREEK FULL BORE 730				

High density, massively wide constructed and athletic bull that will put some doability back in a set of cows. He ranks top 10% for longevity and \$Maternal and in the best 15% for teat quality and maintenance energy requirements in the Angus breed. His dam has a 366 day calving interval and average WW ratio of 104.



Elbanna of Conanga 1209 -
The powerful and prolific dam of Casino Constable

2 JGM Marshall 4C13

AAA 21435631 | ANGUS | BD 4/12/2024 | SC: 41 CM

LD CAPITALIST 316	CED	BW	WW	YW
CASINO CONSTABLE T34	8	.2	67	111
ELBANNA OF CONANGA 1209	CE Score	CEM	Milk	\$EN
JGM DLIBERATE 6A3	★	13	21	-6
JGM LADY BONNIE 9A15	CW	Marb.	RE	Fat
JGM LADY BONNIE 5M6	49	.55	.88	-.009
CCA EMBLAZON 702				

Square-made and thick ended bull with cow making credentials - he ranks top 1% on the new functional longevity EPD and \$Maternal index. Our Constable daughters in production are classic Angus cows: easy-fleshing, attractive, and superb udder quality. If you are serious about making a set of replacements start here.

3 JGM Musketeer 4C32

AAA 21435632 | ANGUS | BD 4/16/2024 | SC: 33 CM

LD CAPITALIST 316	CED	BW	WW	YW
CASINO CONSTABLE T34	9	1.2	53	83
ELBANNA OF CONANGA 1209	CE Score	CEM	Milk	\$EN
RECC HAYSAVER 109	★	9	16	5
JGM EVERELDA MAID 8PIO	CW	Marb.	RE	Fat
E&B EVERELDA MAID 123	11	.76	.68	-.024
SITZ TRAVELER 9929				

A big-ribbed bull that takes after his Haysaver dam in terms of volume and fleshing ability. Again ranks top 1% for longevity EPD, as confirmed by his dam who produced here into her late teens. The full brothers to his dam matured into impressive herd bulls and have made their mark on Kevin Peterson's cowherd.

4 JGM Monarch 4C38

AAA 21435642 | ANGUS | BD 4/19/2024 | SC: 37 CM

LD CAPITALIST 316	CED	BW	WW	YW
CASINO CONSTABLE T34	2	2	56	96
ELBANNA OF CONANGA 1209	CE Score	CEM	Milk	\$EN
COLE CREEK FULL BORE 730	★	7	20	-2
JGM ELBREA ERIKA 5C11	CW	Marb.	RE	Fat
JGM ELBREA ERIKA 9V3	29	.81	.67	.019
N BAR EMULATION EXT A1747				

Phenotypically a favorite, this stout featured herdsire prospect is balanced on paper and especially wide chested and powerfully built. His dam always rasies a stout one, and as an 11 year old cow is youthful and fleshy. We like these Constables enough we used a handful of these sons to clean up cows last summer.



E&B Everelda Maid 123 - A powerful MGD of Lot 3, who along with her full sister were in production here to 17 years of age.



Casino Constable T34

Lot 5-8 are 3/4 Brothers

5 JGM Major 4C4

AAA 21428826 | ANGUS | BD 4/11/2024 | SC: 38 CM

LD CAPITALIST 316	CED	BW	WW	YW
CASINO CONSTABLE T34	5	.8	61	104
ELBANNA OF CONANGA 1209	CE Score	CEM	Milk	\$EN
C C A EMBLAZON 702	★	4	16	-2
JGM MISS WIX 5M14	CW	Marb.	RE	Fat
JGM MISS WIX 2H2	35	.79	.57	.017
HA IMAGE MAKER 0415				

Guaranteed to improve udder quality and fleshing ability along with longevity built in from a proven cow family, his legacy will be outstanding replacement females. He is a strong topped, upstanding bull that is hard to fault and has a lot to him. He earned ratios of 90 BW, 103 WW, and 103 YW with lots of competition.



CCA EMBLAZON 702 - GRANDSIRE OF LOTS 5-8, 28 AND 37-38

6 JGM Mayor 4C22

AAA 21435635 | ANGUS | BD 4/14/2024 | SC: 38 CM

LD CAPITALIST 316	CED	BW	WW	YW
CASINO CONSTABLE T34	9	-.1	57	97
ELBANNA OF CONANGA 1209	CE Score	CEM	Milk	\$EN
C C A EMBLAZON 702	★	7	21	7
JGM LADY BONNIE 5M6	CW	Marb.	RE	Fat
JGM LADY BONNIE OAU2	20	.83	.66	-.004
JGM ULTIMATE 8A2				

Like all these 3/4 brothers in lots 5-8, 4C22 combines strong carcass traits with outstanding maternal credentials that place him among the elite for udder quality, longevity, and fleshing ability. This sire group is chunky and robust bulls that will sire stout steers and broody heifers.

8 JGM Monitor 4C34

AAA 21435629 | ANGUS | BD 4/16/2024 | SC: 37.5 CM

LD CAPITALIST 316	CED	BW	WW	YW
CASINO CONSTABLE T34	9	1.6	66	116
ELBANNA OF CONANGA 1209	CE Score	CEM	Milk	\$EN
C C A EMBLAZON 702	★	10	24	1
JGM BLACKBIRD 9M2	CW	Marb.	RE	Fat
JGM BLACKBIRD 5G3	44	1.05	.62	.006
GDAR GAME DAY 449				

The final of the 3/4 brothers, and another Constable son where everything about the pedigree is legendary for siring top shelf range cows. 4C34 earned himself impressive ratios of 109 for WW at 657 lb. and followed that with a ratio of 120 for YW - and he earned that on corn stalks and rye in a big group. SC 37.5 cm

7 JGM Manager 4C23

AAA 21435634 | ANGUS | BD 4/14/2024 | SC: 39 CM

LD CAPITALIST 316	CED	BW	WW	YW
CASINO CONSTABLE T34	6	-.8	51	101
ELBANNA OF CONANGA 1209	CE Score	CEM	Milk	\$EN
C C A EMBLAZON 702	★	5	23	4
JGM ELBREA ERIKA 5M7	CW	Marb.	RE	Fat
JGM ELBREA ERIKA PA 617S	33	.77	.71	.008
HA POWER ALLIANCE 1025				

Moderate birth weight with optimal growth, solid end product merit, and maternal merit that is hard to match; this bold ribbed bull will move the needle for volume and body condition in a cowherd. His ideal dam has average progeny ratios of BW 95, WW 103, and YW 103.

9 JGM Marine 4C16

AAA 21435636 | ANGUS | BD 4/13/2024 | SC: 37 CM

LD CAPITALIST 316	CED	BW	WW	YW
CASINO CONSTABLE T34	6	1.3	68	113
ELBANNA OF CONANGA 1209	CE Score	CEM	Milk	\$EN
GDAR GAME DAY 449	★	7	26	-11
JGM JUANADA PRIDE 5G7	CW	Marb.	RE	Fat
K N M JUANADA PRIDE 818	54	.84	.65	.039
SHOSHONE MANDEL 623 GFAR				

Individual ratios of 94 BW, 111 WW, and 105 YW from a dam with 8 @ 96 BW, 8 @ 102 WW and a 368 day calving interval. Robust and hard to fault phenotypically, he is a maternal brother the Ectype bull that served as a herdsire for the Sitz and Johnston families.



Two retired veterinarians enjoying a chat at the State Fair. It is rare that we give Chuck a day off when we have him here.



GDAR GAME DAY 449 - HIGHLY REGARDED MATERNAL SIRE AND MGS OF LOT 9



Casino Constable T34

10 JGM Master 4C40

AAA 21457211 | ANGUS | BD 4/22/2024 | SC: 40 CM

LD CAPITALIST 316	CED	BW	WW	YW
CASINO CONSTABLE T34	5	.7	69	121
ELBANNA OF CONANGA 1209	CE Score	CEM	Milk	\$EN
COLE CREEK 49N ENCORE 62S	★	7	20	-12
BROKEN ARROW PRINCESS 7174B	CW	Marb.	RE	Fat
BAA PRINCESS 4247B	51	.69	.76	.017
COLE CREEK 49N ENCORE 62S				

Bigger outlined Constable bull that is strong and shapely down his top, offers extra extension and is an athlete on the move. He charted ratios of 94 BW, 103 WW and 102 YW. The dams of lots 10 and 11 were my picks of the bred heifers at the Broken Arrow dispersal and they have not disappointed.

12 JGM Mountie 4C17

AAA 21435630 | ANGUS | BD 4/13/2024 | SC: 37 CM

LD CAPITALIST 316	CED	BW	WW	YW
CASINO CONSTABLE T34	5	1	74	125
ELBANNA OF CONANGA 1209	CE Score	CEM	Milk	\$EN
CAR EFFICIENT 534	★	8	26	-8
JGM LADY ARBITRATOR 9E1	CW	Marb.	RE	Fat
JGM LADY ARBITRATOR 7G2	54	.81	.69	.03
GDAR GAME DAY 449				

Neat fronted, well made bull with a lot of spread from chest floor to stifle. He started at 86 lb., weaned at 645, and rounds out a dozen of these Constable 2 yr olds with strong carcass data from some of our most proven cows. As a group they will put some butt end in a set of steers and sire ideal replacement females.

11 JGM Magistrate 4C6

AAA 21435633 | ANGUS | BD 4/11/2024 | SC: 41 CM

LD CAPITALIST 316	CED	BW	WW	YW
CASINO CONSTABLE T34	1	3	60	99
ELBANNA OF CONANGA 1209	CE Score	CEM	Milk	\$EN
SITZ BONANZA 7029	★	7	22	8
BROKEN ARROW DAISEY 7192B	CW	Marb.	RE	Fat
BAA DAISEY 2227B	40	.69	.87	.046
SITZ BONANZA 7029				

Big nutted and soggy bull that looks like an Angus bull should. Reads with plenty of muscle on paper and in person. Outstanding maternal lineage and strong carcass traits.

13 CFC Match Point C42

AAA 21417657 | ANGUS | BD 9/10/2024

LD CAPITALIST 316	CED	BW	WW	YW
CASINO CONSTABLE T34	-2	4.9	88	137
ELBANNA OF CONANGA 1209	CE Score	CEM	Milk	\$EN
CONNEALY STIMULUS 8419	★	3	18	-20
C F C MISS WIX 6A3	CW	Marb.	RE	Fat
MISS WIX 2022 HC MC CUMBER	57	1.27	.8	.056
LEACHMAN RIGHT TIME				

Meatball would have been a more appropriate name for this bull. He is super thick, muscular, deep-bodied, and gentle. Bold performance with a 122 NR and 113 YR. He boasts top 15% EPDs for WW, docility, hoof shape, MARB, \$Maternal & \$Grid. He covers a lot of bases.



Welcome the newest member of the Stockmen's Source Family - Charles Elliott Martin 12/29/2025



JGM Family Time 8E5

JGM Family Time 8E5 Age 8 | Angus

Family Time is a proven calving ease bull that improves disposition and sires plenty of length and growth in cattle with the ability to grade well. We continue to use him heavily because we calved quite a few daughters the last year and really like them, he replicates his dam's phenotype consistently in his female progeny and sires cows that are strong on maternal instinct, and have really nice udders. We have used Family Time extensively on Simangus heifers, and actually have about three times more data on his Simangus progeny. His Simmental data ranks him in the top 10% for calving ease, top 4% for carcass weight and ADG, and top 15% for marbling within that population.

	CED	BW	WW	YW	CEM	MILK	\$EN	CW	MARB	RE	FAT
EPD	8	-.7	64	107	12.6	21	-2	43	.63	.25	.035
%Rank	4%	15%	60%	70%	30%	80%	20%	70%	50%	90%	70%



14 CFC MAGNETO E42

AAA 21417660 | ANGUS | BD 8/31/2024

CAR EFFICIENT 534
 JGM FAMILY TIME 8E5
 JGM BLACKBIRD 5G4
 SITZ BONANZA 7029
 CFC LADY IE4
 OCC ECHELON 857E
 N BAR EMULATION EXT

CED	BW	WW	YW
12	.3	60	99
CE Score	CEM	Milk	\$EN
4★	4	21	13
CW	Marb.	RE	Fat
44	.52	.44	.037

The 14 YO dam of this group has been fertile and productive recording 10 calves @ 109 NR & 10 @ 108 YR. She is a 1250# cow and offers more true growth performance relative to her size than any cow we have ever owned. On paper they are elite for calving ease, udder quality, functional longevity and \$Maternal. Combined with the extra length and proven calving ease of the Family Time bull, this kind should work for about anyone. Full brothers sold well in last years offering, thanks to Sonnie Neiman, Wayne Krausnick and Tim & Chris Kalkowski.

ET Full Brothers



CFC LADY IE4 - DAM OF LOTS 14-16 & 31-36;
 MGD OF LOTS 26, 70, 71, 79, 87-93

15 CFC MANIFEST E43

AAA 21417661 | ANGUS | BD 8/31/2024

	CED	BW	WW	YW	CE	CEM	Milk	\$EN	CW	Marb	RE	FAT
EPD	10	.6	67	113	3★	9	20	-21	53	.36	.35	.33

16 CFC MATCHBOX E44

AAA 21417662 | ANGUS | BD 9/4/2024

	CED	BW	WW	YW	CE	CEM	Milk	\$EN	CW	Marb	RE	FAT
EPD	18	-2.3	59	101	12	4★	27	-8	42	.57	.43	.031



COLE CREEK FULL BORE 730 - LONGTIME RESIDENT
 ANGUS HERDSIRE WHO IS THE MGS OF LOTS 4, 17 & 39-43

17 JGM Mama Knows 4E13

AAA 21428827 | ANGUS | BD 4/10/2024 | SC: 39 CM

CAR EFFICIENT 534
 JGM FAMILY TIME 8E5
 JGM BLACKBIRD 5G4
 COLE CREEK FULL BORE 730
 JGM BLACKBIRD 4C6
 JGM BLACKBIRD EMB 604S
 OCC EMBLAZON 854E

CED	BW	WW	YW
9	-.1	52	93
CE Score	CEM	Milk	\$EN
2★	5	29	0
CW	Marb.	RE	Fat
36	.43	.61	.022

Out of a past and current donor for us, 4E13 is masculine, strong topped and shapely through his quarter. He reminds me a lot of his maternal brother that was lot 1 last year, thanks to Jared Hardin for finding that one. Moderate BW, top 1% of the breed for predicted daughter longevity and top 15% for \$Maternal index.

18 JGM Multiply 4E12

AAA 21428834 | ANGUS | BD 4/10/2024 | SC: 37 CM

CAR EFFICIENT 534
 JGM FAMILY TIME 8E5
 JGM BLACKBIRD 5G4
 COLE CREEK FULL BORE 730
 NCC DIXIE ERICA 125
 JGM BLACKBIRD EMB 604S
 SINCLAIR SHADOW BOXER 5S1

CED	BW	WW	YW
8	.2	68	96
CE Score	CEM	Milk	\$EN
1★	5	24	-1
CW	Marb.	RE	Fat
32	.39	.35	.012

A favorite in the branding pen, this rugged bull has a lot of shape to his rib and hip and looks like he offers plenty of growth - he weaned at 758 lb. Old school maternal Angus pedigree on the bottom from a cow we bought at the Neiman dispersal. We retained a half Sim maternal brother to this one for our own use.



JGM Family Time 8E5

19 JGM Mankind 4E1

AAA 21428833 | ANGUS | BD 4/4/2024 | SC: 41 CM

CAREFFICIENT 534

CED	BW	WW	YW
11	2	68	113

JGM FAMILY TIME 8E5

JGM BLACKBIRD 5G4

BARTELS LAST STRAW 863

CE Score	CEM	Milk	\$EN
4★	6	14	5

JGM ENVITA 1L5

BROKEN ARROW ENVITA 7178B

SITZ BONANZA 7029

CW	Marb.	RE	Fat
42	.57	.46	.022

Put together as correct and balanced as you can make one, 4E1 is a calving ease specialist with the right shoulder and head shape to save you some sleep. His dam is a really attractive Last Straw daughter that does her job well. If you need to breed some heifers pay attention to this next handful of bulls.



JGM BLACKBIRD 5G4 - DAM OF JGM FAMILY TIME

20 JGM Many Hands 4E8

AAA 21428837 | ANGUS | BD 4/9/2024 | SC: 38.5 CM

CAREFFICIENT 534

CED	BW	WW	YW
13	-1	63	107

JGM FAMILY TIME 8E5

JGM BLACKBIRD 5G4

JGM CORE VALUES 5G11

CE Score	CEM	Milk	\$EN
4★	2	27	6

JGM MISS BURGESS 2G9

JGM MISS BURGESS 1N10

OCC MAGNITUDE 805M

CW	Marb.	RE	Fat
39	.8	-.07	.041

Many hands make light work, and this bull should lighten the workload come calving time. A 3/4 brother to the next bull, they stack 2 of our recent favorite female sires. This one had a 73 lb BW, posts and adj 205 of nearly 600 lb and has the length and stature to make them grow with strong figures for marbling.

3/4 Brothers

21 JGM Multitude 4E18

AAA 21428835 | ANGUS | BD 4/17/2024 | SC: 39 CM

CAREFFICIENT 534

CED	BW	WW	YW
10	.8	70	123

JGM FAMILY TIME 8E5

JGM BLACKBIRD 5G4

JGM CORE VALUES 5G11

CE Score	CEM	Milk	\$EN
2★	8	29	-16

JGM MISS BURGESS 2G5

JGM MISS BURGESS 5D5

SITZ DASH 10277

CW	Marb.	RE	Fat
44	.51	.3	.039

A 3/4 brother to the previous lot, but has enough density and shape, combined with a 111 YW ratio to make us think he is not quite as heifer safe. Should be fine on supervised heifers but not a sure shot heifer bull - and he doesn't have to be, he has plenty of punch for a set of cows.



CHASE WORKING ON A TANK PROJECT. THIS ONE TOOK A LITTLE MORE THAN EXPECTED BUT TURNED OUT WELL

22 JGM Manifest 4E19

AAA 21428836 | ANGUS | BD 4/18/2024 | SC: 42 CM

CAREFFICIENT 534

CED	BW	WW	YW
4	.3	46	81

JGM FAMILY TIME 8E5

JGM BLACKBIRD 5G4

B3R PIONEER WAVE Y409

CE Score	CEM	Milk	\$EN
4★	2	29	0

JGM ELBREA ERIKA 7J7

JGM ELBREA ERIKA 5M7

CCA EMBLAZON 702

CW	Marb.	RE	Fat
38	.45	.52	.036

Manifest is a calving ease prospect that comes from an outcross pedigree on his dams side. He was born at just 80 lb out of a mature cow, accelerated to a 101 YW ratio, and has been ranting and pacing ever since waiting for his chance to get to some heifers.



JGM CORE VALUES 5G11 - SIRE OF LOT 23.

23 JGM Mission Statement 4G6

AAA 21428829 | ANGUS | BD 4/11/2024 | SC: 36.5 CM

GDAR GAME DAY 449

CED	BW	WW	YW
15	-1.8	62	102

JGM CORE VALUES 5G11

JGM PROUD ERIKA 1H1

NCC WYOMING 307

CE Score	CEM	Milk	\$EN
4★	10	35	-2

NCC ERICA LASSIE 021

NCC ERICA LASSIE 3070

COLE CREEK FULL BORE 730

CW	Marb.	RE	Fat
39	.57	.29	.111

A big, long, rugged Core Values son that is long as a train and has the same rib dimension as his Wyoming mama. He offers CE in the top 3% of the breed paired with a 676 lb WW and high rankings on the maternal traits including udder quality, longevity, and the \$Maternal index.



24 JGM Most Likely 4G4

AAA 21428830 | ANGUS | BD 4/10/2024 | SC: 40.5 CM

JGM CORE VALUES 5G11

CED	BW	WW	YW
6	.9	66	113

JGM EXPECTATIONS 7G25

JGM DIXIE ERICA OV2

H A POWER ALLIANCE 1025

CE Score	CEM	Milk	\$EN
★	6	31	-10

JGM PROUD ERIKA 3A2

JGM PROUD ERIKA 9M11

OCC EMBLAZON 854E

CW	Marb.	RE	Fat
52	.17	.65	.02

A solid performing Expectations son out of a Power Alliance daughter that was an 11 yr old when she weaned him off at 615 lb. Maybe one of the best looking, his structure and angles are ideal, he is extra long, and he is athletic on the move. A good all around sire of better replacements and desirable feeder steers.



JGM EXPECTATIONS 7G25 - SIRE OF LOTS 24-25



Lena & Henry hard at work.

25 JGM Meeting Goals 4G8

AAA 21428831 | ANGUS | BD 4/14/2024 | SC: 40 CM

JGM CORE VALUES 5G11

CED	BW	WW	YW
4	.8	49	88

JGM EXPECTATIONS 7G25

JGM DIXIE ERICA OV2

H A POWER ALLIANCE 1025

CE Score	CEM	Milk	\$EN
★	6	23	-3

JGM MISS BONNIE 8A7

JGM MISS BONNIE 5D3

SITZ DASH 10277

CW	Marb.	RE	Fat
30	.47	.3	.027

Meeting Goals is out of one of my favorite Power Alliance daughters, she is gentle and productive with super fleshing ability. Masculine, level made, and long as a train he will be one to find in the pen.

BEAR MTN NORTH STAR

Age 4 | Angus

North Star was raised by our friends at Bear Mountain Angus. Similar to his sire, True North, he offers proven calving ease and maternal value with good marbling, yet in a more moderate milk package that we feel works better in our environment. North Star is a little bigger in his frame than his daddy and consistently stamps his calves with a square hip, good length and a very attractive front end. He ranks in the best 15% of the breed for CE, scrotal, TEAT, docility, MARB and \$Grid.

	CED	BW	WW	YW	CEM	MILK	\$EN	CW	MARB	RE	FAT
EPD	12	-1.3	70	136	9	24	-21	48	1.31	.84	.021
%Rank	15%	10%	45%	25%	40%	65%	60%	60%	10%	30%	55%

26 CFC MADE RIGHT J41

AAA 21424866 | ANGUS | BD 8/23/2024

SQUARE B TRUE NORTH 8052

BEAR MTN NORTH STAR

BEAR MTN FOREVER LADY 0579

NCC RAINMAKER 562

CFC LADY 2RM2

C F C LADY IE4

OCC ECHELON 857E

CED	BW	WW	YW
12	-.5	62	117

CE Score	CEM	Milk	\$EN
4★	9	27	-14

CW	Marb.	RE	Fat
41	.79	.39	.039

DNA verification corrected the sire on this one as we had it wrong. Starting at 67 lb. he went on to wean at 618 lb. on a 2YO cow that weighed 1086 lb. and bred back early to A.I. That's how I would define a maternally efficient cow. He boasts CE & TEAT EPD's in the top 10% of the breed and is well above average for MARB.



NCC Rainmaker 562 - Maternal grandsire of lot 26



27 CFC MAGNITUDE N41

AAA 21417658 | ANGUS | BD 8/21/2024

SQUARE B TRUE NORTH 8052	CED	BW	WW	YW
BEAR MTN NORTH STAR	13	-.2	79	138
BEAR MTN FOREVER LADY 0579	CE Score	CEM	Milk	\$EN
BEAR MTN TITANIC 654B	4★	14	30	-22
BEAR MTN ERICA DIANNA 8821	CW	Marb.	RE	Fat
BEAR MTN ERICA DIANNA 4221	56	1.2	.93	.028
MCATL PURE PRODUCT 903-55				

Born from a Pathfinder cow we selected from the Bear Mountain mature cow dispersal, this bull is a calving ease and carcass deluxe. Elite top 4% CE and still top 25% YW supported by a 109 NR & 106 YR. His dam is a moderate and maternally efficient cow producing 5@94 BR, 108 NR & 4 @ 102YR. Top 20% MARB, top 25% REA.



GDAR JUSTIFIED 914 - SIRE OF LOTS 31-32

28 CFC MERIDIAN N43

AAA 21417659 | ANGUS | BD 8/31/2024

SQUARE B TRUE NORTH 8052	CED	BW	WW	YW
BEAR MTN NORTH STAR	12	-.6	67	111
BEAR MTN FOREVER LADY 0579	CE Score	CEM	Milk	\$EN
C C A EMBLAZON 702	4★	10	27	1
NCC ERICA LASSIE 656	CW	Marb.	RE	Fat
NCC ERICA LASSIE 3070	41	.73	.67	.025
COLE CREEK FULL BORE 730				

A touch less frame than his brothers he is equally as long and deep bodied. A correctly made small head and top 10% CE EPD solidify his ranking as a 4 star heifer bull. Good individual performance with a 105NR and 104YR. His maternal projections are very strong with top 2% TEAT, top 15% \$EN & \$Maternal.

31 CFC MADE WHOLE J42

AAA 21417663 | ANGUS | BD 8/26/2024

KG JUSTIFIED 3023	CED	BW	WW	YW
GDAR JUSTIFIED 914	13	-.3	66	123
GDAR FOREVER LADY 7533	CE Score	CEM	Milk	\$EN
O C C ECHELON 857E	4★	14	13	-9
C F C LADY 1E4	CW	Marb.	RE	Fat
C F C LADY 9X2 OF 3M19	50	.44	.61	.028
N BAR EMULATION EXT				

Two full brothers whose sire was selected as the best son of KG Justified to carry on his maternal legacy yet offers more stoutness and growth. The 914 daughters have received great reviews across the country. Combine this with our 1E4 cow who has 38 progeny on record and counting and you can bet this is a solid genetic package for maternal function, growth performance and overall quality. We will be bringing more 914 sons to you in future years. We may elect to collect semen on the lot 31 bull before delivery.

29 JGM Marksman 4B1

AAA 21428840 | ANGUS | BD 4/8/2024 | SC: 38 CM

KM BROKEN BOW 002	CED	BW	WW	YW
SPRING COVE CROSSBOW	13	-.1	60	106
SPRING COVE PRETTY 205	CE Score	CEM	Milk	\$EN
JGM FAMILY TIME 8E5	4★	7	24	-22
JGM EVERELDA MAID 2E4	CW	Marb.	RE	Fat
JGM EVERELDA MAID OAG	42	.76	.73	-.029
HA POWER ALLIANCE 1025				

Our Crossbow sons have been high customer satisfaction calving ease bulls, and he works well on Family Time daughters. 4B1 leads a pair of 3/4 brother that are ideally built with good feet and legs. Sure shot heifer bulls that can inject both marbling and maternal into their progeny.

ET Full Brothers

32 CFC MATCHBOX E44

AAA 21417664 | ANGUS | BD 8/28/2024

	CED	BW	WW	YW	CE	CEM	Milk	\$EN	CW	Marb	RE	FAT
EPD	3	2.2	73	129	★	10	25	-23	56	.62	.29	.009

3/4 Brothers

30 JGM Majra 4B2

AAA 21428841 | ANGUS | BD 4/12/2024 | SC: 36 CM

KM BROKEN BOW 002	CED	BW	WW	YW
SPRING COVE CROSSBOW	16	-2.6	61	108
SPRING COVE PRETTY 205	CE Score	CEM	Milk	\$EN
JGM FAMILY TIME 8E5	4★	14	24	-15
JGM MISS WIX 2E3	CW	Marb.	RE	Fat
JGM MISS WIX 5M14	34	1.13	.34	.006
C C A EMBLAZON 702				

4B2 has a lot to him for a top 2% CE heifer bull, and he is hard to fault phenotypically. He is small headed, smooth shouldered, and rapidly gets wider from there back - should be easy to spot. SC 36 cm



SPRING COVE CROSSBOW - SIRE OF LOTS 29-30



Sitz Rainmaker 11127

Sitz Rainmaker 11127

AGE 19 | ANGUS

Born in 2007 we decided to use this bull after visiting a herd that had a majority of his daughters reach past 10 YO and into their teens while being very productive. In addition to that not many bulls of that age can still hold a growth EPD in the top third for YW like he does. The fertility is documented with a top 2% Heifer Pregnancy EPD and top 4% Scrotal EPD. Very gentle cattle with a top 1% Docility EPD. This group should provide an outcross option for almost anyone.

	CED	BW	WW	YW	CEM	MILK	\$EN	CW	MARB	RE	FAT
EPD	0	3.6	65	128	-3	30	-19	43	.56	.31	.036
%Rank	90%	95%	55%	35%	95%	25%	55%	70%	60%	85%	70%



Lot 33 -36 ET Full Brothers

33 CFC MONSOON RM41

AAA 21417665 | ANGUS | BD 4/2/2024

SITZ RAINMAKER 11127
SITZ RAINMAKER 11127
SITZ EMMA E 417L
O C C ECHELON 857E
C F C LADY 1E4
C F C LADY 9X2 OF 3M19
N BAR EMULATION EXT

CED	BW	WW	YW
5	3.8	75	124
CE Score	CEM	Milk	\$EN
★	5	24	-6
CW	Marb.	RE	Fat
44	.67	.39	.034

A very docile set of full brothers that offer a great deal of capacity, with plenty length of spine and good Angus character. Their 14 YO dam is a dense 1250lb cow that has been flushed extensively and records 10 natural calves at 109 NR & 108 YR. She is the dam of our Weighmaker bull that has sold numerous SimAngus sons in past sales. Despite some differences in CE, they all record solid YW EPD's and are very strong for Functional Longevity EPD and \$Maternal index. If you would like to make productive and long lived cows then I can't recommend anything higher than this group.



JGM DIXIE ERICA 0V2 - DAM OF JGM GOOD TIMING 9M7

34 CFC MICROBURST RM42

AAA 21417666 | ANGUS | BD 4/1/2024

	CED	BW	WW	YW	CE	CEM	Milk	\$EN	CW	Marb	RE	FAT
EPD	3	2.1	68	118	★	4	29	-13	43	.66	.14	.088

35 CFC MILLIBAR RM43

AAA 21417667 | ANGUS | BD 4/3/2024

	CED	BW	WW	YW	CE	CEM	Milk	\$EN	CW	Marb	RE	FAT
EPD	10	-.5	66	118	3★	5	27	-17	51	.35	.57	.022

36 CFC MAKIN RAIN RM44

AAA 21417668 | ANGUS | BD 4/3/2024

	CED	BW	WW	YW	CE	CEM	Milk	\$EN	CW	Marb	RE	FAT
EPD	13	.4	65	113	4★	7	31	-15	43	.73	.46	.055



CFC Lady 1E4 - udder pictured at 14 years of age, raising 12th calf

37 JGM Millenium 4M1

AAA 21428838 | ANGUS | BD 3/28/2024 | SC: 37.5 CM

C C A EMBLAZON 702
JGM GOOD TIMING 9M7
JGM DIXIE ERICA 0V2
JGM CORE VALUES 5G11
JGM MISS BONNIE 1G5
JGM MISS BONNIE 3Q1
SINCLAIR OPEN RANGE 2Q23

CED	BW	WW	YW
8	1.5	68	115
CE Score	CEM	Milk	\$EN
★	7	27	-15
CW	Marb.	RE	Fat
50	.34	.64	-.006

A Good Timing son out of a fancy Core Values daughter, Millenium was 72 lb actual BW but accelerated to 648 lb. at weaning and cruised to a 106 YW ratio. He is a square hipped performance bull that should serve the dual purpose of improving udder quality in his daughters.

38 JGM Many Moons 4M6

AAA 21428839 | ANGUS | BD 4/16/2024 | SC: 39 CM

C C A EMBLAZON 702
JGM GOOD TIMING 9M7
JGM DIXIE ERICA 0V2
SINCLAIR OPEN RANGE 2Q23
JGM MISS WIX 4Q7
JGM MISS WIX OXG2
OCC GREAT PLAINS 943G

CED	BW	WW	YW
2	1.4	59	102
CE Score	CEM	Milk	\$EN
★	9	17	-15
CW	Marb.	RE	Fat
39	.67	.47	.051

Out of an 11 yr old cow that I really admire, Many Moons is a bigger framed bull that is going to keep growing for a while. As his name would imply, he comes from two cow families that have been around a long time and have been faultless in their duties. Ratios of 106 WW and 107 YW and still going.



O C C Great Plains 943G



O C C Great Plains 943G

AGE 29 | ANGUS

Great Plains is an extremely high accuracy sire born nearly 30 years ago, yet still relevant today. He is a maternal brother to O C C Emblazon 854E, sired by EXT. Like his sire he has proven to make daughters with ideal udders and the structure and fertility to last well into their teens, this is supported by his EPD rankings of top 2% TEAT, top 10% UDDR and top 15% Functional Longevity. In his youth he was ranked as high as #4 in the breed for ribeye and is definitely the #1 son of EXT for REA/CWT.

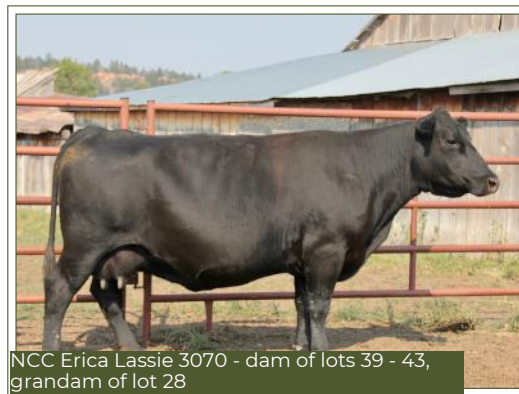
	CED	BW	WW	YW	CEM	Milk	SEN	CW	Marb	RE	FAT
EPD	8	.2	38	71	10	24	14	22	.25	.33	.043
%Rank	40%	30%	95%	95%	35%	65%	10%	95%	85%	85%	680%

39 CFC GREAT PLAINS GP41

AAA 21430054 | ANGUS | BD 9/13/2024

	CED	BW	WW	YW
N BAR EMULATION EXT				
O C C GREAT PLAINS 943G	11	.7	54	82
	CE Score	CEM	Milk	\$EN
DIXIE ERICA OF C H 1019				
COLE CREEK FULL BORE 730				
NCC ERICA LASSIE 3070	4★	8	33	-1
	CW	Marb.	RE	Fat
N77R ERICA LASSIE 7056 870G				
O C C EMBLAZON 854E	44	0	.43	.017

This group of ET full brothers were created with an intense focus on the maternal traits of fertility, longevity, mothering ability and udder quality. Their dam was selected out of the Neiman cow dispersal for these traits along with her prepotency to add a touch more growth performance and stoutness. AAA confirms her maternal value with top 10% ranking for Functional Longevity and \$Weaning, top 20% for \$Energy Savings and top 15% for \$Maternal. As a group these bulls display plenty of length of spine and volume. They read calving ease with clean joints and smooth shoulders and are very sound when they travel. On paper they boast very strong EPD's for calving ease, teat, udder, functional longevity, \$EN, hoof shape, PAP and \$Maternal. Buy them all and build a uniform set of cows that will make you money.



NCC Erica Lassie 3070 - dam of lots 39 - 43, grandam of lot 28

ET Full Brothers

41 CFC GREAT PLAINS GP43

AAA 21435585 | ANGUS | BD 9/6/2024

	CED	BW	WW	YW	CE	CEM	Milk	\$EN	CW	Marb	RE	FAT
EPD	15	-1.6	58	87	4★	12	38	3	40	.46	.45	.053

42 CFC GREAT PLAINS GP45

AAA 21435587 | ANGUS | BD 9/5/2024

	CED	BW	WW	YW	CE	CEM	Milk	\$EN	CW	Marb	RE	FAT
EPD	9	-.2	46	71	3★	6	35	9	30	.3	.52	.001

40 CFC GREAT PLAINS GP42

AAA 21435584 | ANGUS | BD 9/8/2024

	CED	BW	WW	YW	CE	CEM	Milk	\$EN	CW	Marb	RE	FAT
EPD	10	.4	46	71	3★	8	29	5	47	-.03	.69	.036

43 CFC GREAT PLAINS GP46

AAA 21435588 | ANGUS | BD 9/7/2024

	CED	BW	WW	YW	CE	CEM	Milk	\$EN	CW	Marb	RE	FAT
EPD	6	.9	50	76	2★	10	29	8	35	.17	.41	.027





REAL WORLD PERFORMANCE

One unique aspect of our program is we continually evaluate the feedlot performance and actual carcass data of our herd sires in a random mating test herd. In addition, we have feedlot and carcass data from several years of our own calves and customer calves sired by Stockmen's Source bulls. The steer mates and cull heifer mates to the bulls are all finished at 4+ Feeders by our great partners and crew. We continue working to derive more carcass weight and grid premiums from our feedlot cattle while maintaining cows that work within the constraints of our resources. We focus on using bulls with actual carcass data that stretch the antagonism between carcass weight and mature daughter size to produce more pounds of beef with the same inputs. In addition to our own calves we feed Stockmen's Source sired calves from customers and bid on many others. We can not buy all the customer calves that are offered, but will sure try to find you the best market if we are not able to purchase them. We look forward to feeding more in the future. Our cattle consistently earn us premiums on the Tyson grid we utilize, and they have the muscle it takes to generate a lot of payweight and yield while keeping discounts to a minimum. In addition, our test herd cattle are undergoing genomic testing through the American Simmental Association coupled with collection of individual carcass data to help strengthen the correlation between genomic estimations and actual carcass data. One thing we have failed to mention in the past that is worth noting: we feed enough calves out of these bulls that we select for health as well. Meaning if they need treated, they become a steer around here. We may make an exception for an injury occasionally, but it is bad business for both of us if we sell you a bull that required treatment for BRD and then buy back calves out of him. It is in our best interest to keep your best interest in mind.

Kill Date: 10/21/24

Here are some recent results from calves largely sired by SS Bulls and fed in partnership with the ranches that raised them. Great job guys, you know who you are! Thank you for the opportunity, we appreciate you! Contact Jake or Jeremy if you are interested in feeding your cattle at 4+ Feeders.

Gross Weight	246,120
Net Live WGT:	238,736
Average WGT:	1,530
Dressed WGT:	157,284
Carcass Yield%:	65.88
Live Cost:	197.94
Dressed Cost:	300.46

USDA AVG: 296.00



GREAT PLAINS
LIVESTOCK CONSULTING

Jeremy Martin, Ph.D
(402) 781-9378
www.GPLC-Inc.com

GPLC offers complete beef cattle nutritional consulting by professionals with background in, understanding of, and continued investment within the beef industry.

TURNING SCIENCE INTO MONEY



Our Commitment to Data Collection

Our Commitment: We are committed to providing the most accurate and comprehensive data collection and reporting. We do this to make more informed selection decisions and it allows you to buy with more confidence in the information printed in the catalog. Our ultimate goal is improvement, not marketing. The foundation of this is built on reporting production information to the breed associations every year for every cow we own, not just the “good ones”. For the American Simmental Association this is called Total Herd Enrollment or THE. The American Angus Association (AAA) has a similar voluntary program called Maternal Plus.

Genomically Enhanced EPD's

Every bull selling and most of their dams have been DNA tested and the genomic information is factored into the EPD's printed in this catalog. Genomics is an evolving technology and we have been slow to adopt until recent improvements. Initially the genomic information was only correlated to EPD's on registered animals. But now we are involved in the CXP project with the American Simmental Association (ASA) that is collecting genomic information on steers resulting from structured progeny tests. The actual feedlot performance and kill data from these commercial steers is now included in the genomic training “panels”. This should be infinitely more accurate and valuable than previous methods that compared only to EPD projections on the sale bulls and did not account for the culls. With CXP all steers data are included. With a common goal of improving the end product merit of our cattle, Stockmen's Source has formed an alliance with Tony and Amanda White at Sarben Ranch. We progeny test our bulls by A.I. breeding their cow herd and they provide us with production and carcass data on 100% of the calf crop. We were able to get a test on our Stockman bull in the first year of our agreement and currently they have cattle on feed and calves in utero as we evaluate the next two crops. Additionally, we have participated in the Cowherd Roundup (CHR) program also at ASA. Through this program we submitted DNA on 90+% of our cow herd. We think that combining the genomic information of our cows along with commercial calves out of our sires will provide us and our customers with the most accurate EPD's to make the best selection decisions possible.



- More Pounds.
- More Muscle.
- More Marbling.
- More Profit.

Success. SimAngus™.

“To really see premium value at a good cost of gain, animal genetics need to have potential for both muscle and marbling. Simmental and Simmental-crossed cattle really fit the bill.”

Tracy Brunner
Cow Camp Feedyard

“A large percentage of the cattle we feed have Simmental influence. Simmental has what a lot of cows need — more carcass weight, more live weight, more ribeye area, and still keeps the marbling intact.”

Tom Williams
Chappell Feedlot

Trait	Simmental Rank vs. Major Continental Breeds	Angus/Red Angus Rank vs. Major British Breeds
Marbling Score	First	Second
Carcass Weight	First	First
Weight Gain Feed Efficiency	First	Second
Waning Weight	Second	First
Post Weaning Gain	Second	Second

Across-Breed EPD Table, GPE Rep. 22, MARC, USDA



JGM Free Lunch 837F

JGM Free Lunch 837F

Age 8 | 50% Sim, 50% Angus

"Heterosis is the only free lunch in the cattle business" - I can not even count how many times Dr. Jim Gosey and others drilled that into my head. So, that is how Free Lunch got his name, he offers Angus like calving ease, fleshing ability, and daughter mature size - with the extra muscle and power of his Simmental heritage. His Tanker dam is outstanding and these sons are impressive, but his daughters are flat out awesome. Thanks to Tyrell Rousey of Rousey SimAngus for the picture of Free Lunch in the breeding pasture. We have tested this bull in a random mating progeny test for feedlot performance and carcass traits. The results place him in the top 5% of the breed for carcass weight and the top 25% for both marbling and ribeye. **Semen available**

	CED	BW	WW	YW	MCE	MILK	STAY	CW	MARB	RE	FAT
EPD	17.2	-3.0	75.0	119.2	10.7	18.5	12.9	56.8	.57	.93	.01
%Rank	10%	10%	55%	50%	10%	90%	70%	5%	25%	15%	99%



44 JGM MEAT N BONE 4013M

ASA 4478331 | 50% SIM, 50% ANGUS | BD 4/13/24

HOM. BLACK | HOM. POLLED | SC: 36.5 CM

	CED	BW	WW	YW
CCR SPARTAN 9124A	11.7	-0.7	89	147
JGM FREE LUNCH 837F				
JGM MISS WIX TN 327A	CE Score	MCE	Milk	STAY
JGM CORE VALUES 5G11	★	6.5	23	16.2
JGM ROBIN 854F	CW	Marb.	RE	Fat
JGM CREDIBLE 510C	70	.39	.83	-.015
ROUSEY COUNTRY WIDE 138Y				

Leading off the SimAngus is my favorite Free Lunch son ever, and we have had a bunch. Strong numbers for growth and muscle with moderate birth weight and strong stayability. His dam raises one of the best every year. Phenotypically impressive in every way, he is an outlier for skeletal width and visible muscle.



Lot 44 pictured this summer while pulling cleanup duty on our cows.

45 JGM MEAT CASE 4075M

ASA 4478379 | 50% SIM, 50% ANGUS | BD 4/17/24

HOM. BLACK | HOM. POLLED | SC: 38 CM

	CED	BW	WW	YW
CCR SPARTAN 9124A	4.3	2.9	84	135
JGM FREE LUNCH 837F				
JGM MISS WIX TN 327A	CE Score	MCE	Milk	STAY
WINC LIVE AMMO 420B	★	4.6	17	12.2
JGM JUANADA PRIDE 8128F	CW	Marb.	RE	Fat
KNM JUANADA PRIDE 818	57	.29	.78	.002
SHOSHONE MANDEL 623 GFAR				

Stretchy and built wide from bottom to top, this beast of a bull posted big ratios for growth - and his EPDs read near the top for growth, gain, and carcass weight. Backed by a broody, stout Live Ammo dam who is following in the footsteps of his powerful and long-lived granddam.

46 JGM MASS N BALANCE 4120M

ASA 4478545 | 25% SIM, 75% ANGUS | BD 4/28/24

HOM. BLACKS | HOM. POLLED | SC: 38 CM

	CED	BW	WW	YW
CCR SPARTAN 9124A	8.4	.8	90	142
JGM FREE LUNCH 837F				
JGM MISS WIX TN 327A	CE Score	MCE	Milk	STAY
COLE CREEK FULL BORE 730	★	4.6	23	11.9
JGM PROUD ERIKA 5C9	CW	Marb.	RE	Fat
JGM PROUD ERIKA 9M11	58	.49	.80	.005
O C C EMBLAZON 854E				

Aptly named, Mass n Balance describes him well. Out of an outstanding cow that has a 366 day calving interval and average progeny WW ratio of 109 - she stamps her progeny with a lot of body and hip. Will sire daughters that thrive without extra feed and super stout steer progeny.

47 JGM MEAT HOOK 4104M

ASA 4478394 | 63% SIM, 37% ANGUS | BD 4/22/24

HOM. BLACK | HOM. POLLED | SC: 38 CM

	CED	BW	WW	YW
CCR SPARTAN 9124A	14.5	-4.1	58	85
JGM FREE LUNCH 837F				
JGM MISS WIX TN 327A	CE Score	MCE	Milk	STAY
CCR STOCKMAN 8033E	2★	6.5	23	17.9
JGM MISS UPGRADE 0172H	CW	Marb.	RE	Fat
JGM RECC MISS UPGRADE 3022	24	.18	.92	-.014
MR NLC UPGRADE U8676				

One of the most impressive bulls in the pen from a cow family that consistently adds muscle. His dam always beats the average, with a progeny WW ratio of 104. We think his numbers overestimate his calving ease potential, I would not make a habit of using him on heifers, and they underestimate his ability to sire extra pounds.

48 JGM MUSSEL 4060M

ASA 4479686 | 25% SIM, 75% ANGUS | BD 4/16/24

HOM. BLACK | HOM. POLLED | SC: 39 CM

	CED	BW	WW	YW
CCR SPARTAN 9124A	3.7	-2	64	104
JGM FREE LUNCH 837F				
JGM MISS WIX TN 327A	CE Score	MCE	Milk	STAY
CCR STOCKMAN 8033E	★	3.5	22	15.3
JGM DIXIE ERIKA 1214J	CW	Marb.	RE	Fat
JGM DIXIE ERIKA 8MJ1	43	.27	.75	-.018
O C C JUNEAU 807J				

Simmental shape and mass with Angus features. This bull is wide chested, big backed, and stout out of his pins but remains attractive through his head and neck, clean jointed and sound on the move. Balanced numbers and phenotype stemming from our Dixie Erica donor cow on the Angus side.



JGM Free Lunch 837F

49 JGM MEATWAGON 4124M

ASA 4478404 | 44% SIM, 56% ANGUS | BD 4/28/24
HOM. BLACK | HOM. POLLED | SC: 38 CM

CCR SPARTAN 9124A	CED	BW	WW	YW
JGM FREE LUNCH 837F	1.2	4.5	94	149
JGM MISS WIX TN 327A	CE Score	MCE	Milk	STAY
CCR STOCKMAN 8033E	★	.5	21	14.2
JGM MISS BONNIE III9J	CW	Marb.	RE	Fat
JGM PROUD ERIKA 5C12	70	.26	.99	-.020
COLE CREEK FULL BORE 730				

Meatwagon has an impressive meat animal shape and ranks top 2% for carcass weight and top 10% for WW, YW, and ribeye. Not a one trick pony, he comes from the same cow family as lot 46 and our Angus herdsire Core Values. Mark him good, he is hard to find fault with.

50 JGM MARINADE 474M

ASA 4478300 | 44% SIM, 56% ANGUS | BD 4/11/24
HOM. BLACK | HOM. POLLED | SC: 38.5

CCR SPARTAN 9124A	CED	BW	WW	YW
JGM FREE LUNCH 837F	3.1	2.2	74	125
JGM MISS WIX TN 327A	CE Score	MCE	Milk	STAY
JGM DIFFERENTIAL 628D	★	3.4	21	16.2
JGM PETRA 949G	CW	Marb.	RE	Fat
JGM PETRA 497	60	.34	.90	-.013
JGM ZION 2S9				

Plenty of rib shape and volume in this wide walking, big nutted bull that is linebred to both Tanker and Spartan. Strong for growth and should generate lots of revenue from his feedlot bound progeny. His dam is a solid, no miss cow that has raised some great replacements, this is her first bull calf.

51 JGM MAC ATTACK 4020M

ASA 4478334 | 50% SIM, 50% ANGUS | BD 4/14/24
HOM. BLACK | HOM. POLLED | SC: 37.5 CM

CCR SPARTAN 9124A	CED	BW	WW	YW
JGM FREE LUNCH 837F	9.6	1.6	75	125
JGM MISS WIX TN 327A	CE Score	MCE	Milk	STAY
JGM DIFFERENTIAL 628D	★	3.1	18	11.7
JGM MISS ECHELON 0124H	CW	Marb.	RE	Fat
JGM MISS ECHELON 7161E	46	.47	.77	-.002
RECC/JGM SUPERMAN 430				

Lot 51 is a 3/4 brother to lot 50 and displays the same impressive capacity and volume as his brother, they are moderate framed and stocky with ample muscle. Tie this pair together to add some fleshing ability to your cowherd and some butt end to your steers.



JGM Differential 628D, this 3/4 brother to Free Lunch is the MGS of lots 50-51, we have a lot of Differential daughters in our herd and really appreciate their productivity and quiet demeanor.

52 JGM MARROW 4038M

ASA 4478351 | 37% SIM, 63% ANGUS | BD 4/14/24
HOM. BLACK | HOM. POLLED | SC: 39 CM

CCR SPARTAN 9124A	CED	BW	WW	YW
JGM FREE LUNCH 837F	13.6	-2.2	68	107
JGM MISS WIX TN 327A	CE Score	MCE	Milk	STAY
JGM DEPUTY 641D	2★	8.8	24	16.5
JGM PATTY 994G	CW	Marb.	RE	Fat
JGM PATTY 6J3	42	.36	.57	.012
B3R PIONEER WAVE Y409				

Offers a touch more frame and length with a clean and attractive profile. Could work on heifers in a pinch but not without some supervision. His dam is a gentle, picture perfect cow whose progeny average ratios of 107 WW and 104 YW have earned her a spot as one of our favorites.



Big "Thank You!" to Riley Strawder, our right hand man.

53 JGM MARGARITA 4023M

ASA 4478337 | 50% SIM, 50% ANGUS | BD 4/14/24
HOM. BLACK | HOM. POLLED | SC: 39.5

CCR SPARTAN 9124A	CED	BW	WW	YW
JGM FREE LUNCH 837F	11.3	0	82	131
JGM MISS WIX TN 327A	CE Score	MCE	Milk	STAY
SFG SUPER PUNCHER F820	★	8.5	21	16.1
JGM MISS MIRAGE 059H	CW	Marb.	RE	Fat
JGM RECC MISS MIRAGE I142Y	68	.49	.70	-.015
TF LEGENDARY				

This white flanked bull is built like a linebacker, he is athletic on the move and has big muscle shape. His dam is a full sister to Jefe and ideal in terms of structure and udder quality. Good numbers across the board highlighted by a CW EPD that places him in the top 3% of the breed.

54 JGM MEAL TICKET 480M

ASA 4478305 | 50% SIM, 50% ANGUS | BD 4/12/24
HOM. BLACK | HOM. POLLED | SC: 37 CM

CCR SPARTAN 9124A	CED	BW	WW	YW
JGM FREE LUNCH 837F	11.7	-1.2	63	103
JGM MISS WIX TN 327A	CE Score	MCE	Milk	STAY
SFG SUPER PUNCHER F820	★	7	22	15.4
1254J	CW	Marb.	RE	Fat
8A6F	36	.50	.57	-.001
CONNEALY STIMULUS 8419				

Moderate framed and complete 3/4 brother to the previous lot - the combination of Free Lunch and Super Puncher works well going both ways. They will sire equally well in terms of feeder steers and replacement heifers.



JGM Free Lunch 837F

55 JGM MEAT COMA 4153M

ASA 4478553 | 25% SIM, 75% ANGUS | BD 5/3/24
HOM. BLACK | HOM. POLLED | SC: 38 CM

CCR SPARTAN 9124A	CED	BW	WW	YW
JGM FREE LUNCH 837F	14.1	-3.1	60	93
JGM MISS WIX TN 327A	CE Score	MCE	Milk	STAY
SITZ DASH 10277				
JGM MISS BURGESS 5D5	3★	7.2	21	11.9
JGM MISS BURGESS 3H2	CW	Marb.	RE	Fat
H A IMAGE MAKER 0415	26	.71	.18	.041

Out of a really good, old Sitz Dash daughter that doesn't make mistakes, Meat Coma offers the Angus look completed by Free Lunch's width and shape. He ranks well for calving ease and marbling genetics and should be heifer-safe for most operations.

56 JGM9 MONTEREY 477M

ASA 4531561 | 25% SIM, 75% ANGUS | BD 4/11/24
HOM. BLACK | HOM. POLLED | SC: 40.5 CM

CCR SPARTAN 9124A	CED	BW	WW	YW
JGM FREE LUNCH 837F	11.9	-1.2	67	113
JGM MISS WIX TN 327A	CE Score	CME	Milk	STAY
WOODHILL FORESIGHT				
B199	★	6.8	22	14.7
JGM9 MS ANGUS	CW	Marb.	RE	Fat
JGM9 MS ANGUS	38	.60	.43	.017

There are 28 Free Lunch sons in a row here, most of which are homozygous black and homozygous polled, so I had to take some notes to remember them. My notes on 477 say he is extra wide based and stout featured. His dam is a tried and true Foresight daughter that has raised a couple sale features.



LD PHOTOGRAPHY

57 JGM9 MELON 4107M

ASA 4531564 | 37% SIM, 63% ANGUS | BD 4/22/24
HOM. BLACK | HOM. POLLED | SC: 39.5

CCR SPARTAN 9124A	CED	BW	WW	YW
JGM FREE LUNCH 837F	7.3	-.5	75	117
JGM MISS WIX TN 327A	CE Score	MCE	Milk	STAY
CONNEALY STIMULUS 6515				
JGM9 C228	★	5.2	22	10.9
JGM9 MS ANGUS	CW	Marb.	RE	Fat
JGM9 MS ANGUS	44	.57	.41	.010

Hard to pick apart phenotypically, just fault free and ready for a big job. His EPDs look good for feedlot traits, and his dam is a deep bodied 11 yr old Stimulus daughter that is feminine, broody, and weaned him off at a 106 WW ratio.

58 JGM MEDALLION 4070M

ASA 4478373 | 50% SIM, 50% ANGUS | BD 4/17/24
HOM. BLACK | HOM. POLLED | SC: 36 CM

CCR SPARTAN 9124A	CED	BW	WW	YW
JGM FREE LUNCH 837F	8.4	-.5	75	117
JGM MISS WIX TN 327A	CE Score	MCE	Milk	STAY
JGM ETHOS 705E				
JGM LOLITA 190J	★	7.7	21	11.3
JGM LOLITA 9150G	CW	Marb.	RE	Fat
CCR STOCKMAN 8033E	73	.57	1.28	-.007

Top 1% for ribeye, top 2% for carcass weight, top 30% for marbling in a moderate birth weight package. He is an attractive, well balanced bull that is long and level out of his hip, hits the ground square, and offers a lot of muscle. Raised by a good young Ethoses daughter, we like the cow family.

59 JGM9 MYO 4065M

ASA 4531579 | 44% SIM, 56% ANGUS | BD 4/16/24
HOM. BLACK | HOM. POLLED | SC: 37 CM

CCR SPARTAN 9124A	CED	BW	WW	YW
JGM FREE LUNCH 837F	6.9	.5	83	132
JGM MISS WIX TN 327A	CE Score	MCE	Milk	STAY
JGM9 3357110 3323751				
JGM9 MISS PERKINS 1861J	★	5.7	22	10.6
C249	CW	Marb.	RE	Fat
CONNEALY STIMULUS 6515	55	.44	.87	-.016

Not a lot of baldies in this sire group, but here is one with a strong set of numbers to complement his cool look. Neat headed, shapely and dense made, he is more than just a pretty face, he posted ratios of 107 WW and 112 YW.

60 JGM MAPLE 4085M

ASA 4478541 | 25% SIM, 75% ANGUS | BD 4/19/24
HOM. BLACK | HOM. POLLED | SC: 39 CM

CCR SPARTAN 9124A	CED	BW	WW	YW
JGM FREE LUNCH 837F	10.4	-1.4	78	120
JGM MISS WIX TN 327A	CE Score	MCE	Milk	STAY
CONNEALY STIMULUS 8419				
7AII	★	6.9	23	17.2
JGM MERLE 2C15	CW	Marb.	RE	Fat
COLE CREEK FULL BORE 730	50	.46	.82	.009

Maple comes from a long line of easy fleshing cows that hold their shape all year long. Solid and well balanced numbers across the board combined with a solid build and extra shape to his quarter. He should hold up well in the breeding pasture and cover a bunch of cows.

61 JGM9 MOUSSE 497M

ASA 4531580 | 44% SIM, 56% ANGUS | BD 4/12/24
HOM. BLACK | HORN GENE CARRIER | SC: 39 CM

CCR SPARTAN 9124A	CED	BW	WW	YW
JGM FREE LUNCH 837F	1.4	3.8	91	144
JGM MISS WIX TN 327A	CE Score	MCE	Milk	STAY
JGM9 3357110 3323751				
JGM9 MISS PERKINS 1864J	★	3	22	7.1
C251	CW	Marb.	RE	Fat
C F C PISTOLEER 2C31	69	.36	1.21	.019

Top 15% WW and YW, top 2% CW and REA in a bigger framed, stout featured performance-oriented bull.



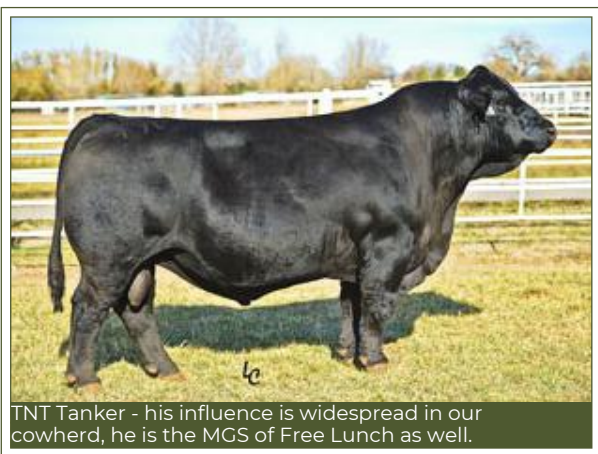
JGM Free Lunch 837F

62 JGM MEAT N TATERS 4010M

ASA 4478328 | 50% SIM, 50% ANGUS | BD 4/13/24
HOM. BLACK | HOM. POLLED | SC: 38.5 CM

CCR SPARTAN 9124A	CED	BW	WW	YW
JGM FREE LUNCH 837F	19.3	-4.5	58	94
JGM MISS WIX TN 327A	CE Score	MCE	Milk	STAY
ACW IRONHIDE 395Y				
JGM PIONEER GIRL 741E	4★	12.6	28	14.1
JGM PIONEER GIRL TN 435B	CW	Marb.	RE	Fat
TNT TANKER U263	48	.64	.69	.021

Meat n Taters is an interesting heifer bull prospect that is in the best 4% of the breed for both CE and BW but still predicted to sire carcass weight in the top 25% of the breed. Extensive progeny data has proven these Free Lunch cattle to possess exactly that kind of growth curve. Three generations of low BW cows behind him.



TNT Tanker - his influence is widespread in our cowherd, he is the MGS of Free Lunch as well.

63 JGM9 MAIN COURSE 449M

ASA 4531585 | 50% SIM, 50% ANGUS | BD 4/10/24
HOM. BLACK | HOM. POLLED | SC: 42 CM

CCR SPARTAN 9124A	CED	BW	WW	YW
JGM FREE LUNCH 837F	22.4	-6.6	50	78
JGM MISS WIX TN 327A	CE Score	MCE	Milk	STAY
MR NLC ICON X0104				
E342	4★	13	22	17.8
JGM9 MS ANGUS	CW	Marb.	RE	Fat
JGM9 MS ANGUS	17	.58	.29	-0.10

Coming from a powerful cow that is consistently low BW, we trust Main Course will breed true to his top 1% CE and BW projections. Built with extra length of spine and a smooth outline, he is masculine and capable of covering a lot of country.

64 JGM MANWICH 484M

ASA 4478309 | 50% SIM, 50% ANGUS | BD 4/12/24
HOM. BLACK | HOM. POLLED | SC: 39.5 CM

CCR SPARTAN 9124A	CED	BW	WW	YW
JGM FREE LUNCH 837F	5	1.2	54	96
JGM MISS WIX TN 327A	CE Score	CEM	Milk	\$EN
SFG SUPER PUNCHER F820				
JGM PROUD ERIKA 179J	2★	3	34	-7
JGM PROUD ERIKA 5C9	CW	Marb.	RE	Fat
COLE CREEK FULL BORE 730	24	.58	.40	.26

Manwich is silky smooth in his build with nothing to take away from his calving ease potential but would not look out of place in a pen of power bulls. His dam a maternal sibling to the dam of lot 3 and one we have high expectations for.

65 JGM MEAT STICK 412M

ASA 4478250 | 50% SIM, 50% ANGUS | BD 4/7/24
RED GENE CARRIER | HOM. POLLED | SC: 36.5

CCR SPARTAN 9124A	CED	BW	WW	YW
JGM FREE LUNCH 837F	15.9	-2.4	83	129
JGM MISS WIX TN 327A	CE Score	MCE	Milk	STAY
JGM CREDIBLE 510C				
JGM LOLITA 853F	4★	8	22	13.1
JGM LOLITA JF 414B	CW	Marb.	RE	Fat
OCC JETFECK I33N	61	.15	1.03	-.026

Neat fronted, small headed, and smooth made with rib shape like a blimp. He reads in the top 35% for 8 traits in the Simmental database and is out of a low BW cow that is massive in her build.

66 JGM MANGO 495M

ASA 4479679 | 37% SIM, 63% ANGUS | BD 4/12/24
HOM. BLACK | HOM. POLLED | SC: 37 CM

CCR SPARTAN 9124A	CED	BW	WW	YW
JGM FREE LUNCH 837F	20.1	-5.9	51	83
JGM MISS WIX TN 327A	CE Score	MCE	Milk	STAY
CCR STOCKMAN 8033E				
JGM NCC 991HG	4★	11.9	22	13.1
N77R 2062	CW	Marb.	RE	Fat
ANGUS	31	.70	.65	.027

A smaller framed bull that is made right in every regard, and is square when you get behind him. Mango offers elite calving ease, he started life at 67 lb out of a mature, calving ease bred cow.

67 JGM MUNCHIES 4054M

ASA 4478362 | 37% SIM, 63% ANGUS | BD 4/16/24
HOM. BLACK | HOM. POLLED | SC: 40 CM

CCR SPARTAN 9124A	CED	BW	WW	YW
JGM FREE LUNCH 837F	19.9	23	16.6	31
JGM MISS WIX TN 327A	CE Score	MCE	Milk	STAY
E&B PLUS ONE				
O16H	4★	10.2	23	16.6
JGM MIRAGE 858F	CW	Marb.	RE	Fat
TNT TANKER U263	31	.70	.65	.024

If you need legit heifer bulls with extra shape and density, circle lots 62-68 in this sire group. Another top ranking bull for CE credentials backed up by a 72 lb actual BW. His stayability and marbling numbers are near the top as well.

68 JGM MEAL TIME 4009M

ASA 4478327 | 41% SIM, 59% ANGUS | BD 4/13/24
HOM. BLACK | HOM. POLLED | SC: 38.5 CM

CCR SPARTAN 9124A	CED	BW	WW	YW
JGM FREE LUNCH 837F	17.8	-5.8	55	89
JGM MISS WIX TN 327A	CE Score	MCE	Milk	STAY
MR NLC ENTREPRENEUR I227				
JGM MISS WIX 730E	4★	10	27	17.2
JGM MISS WIX 313	CW	Marb.	RE	Fat
HA IMAGE MAKER 0415	33	.49	.47	.019

Made for the job of breeding a bunch of heifers, he is gentle, masculine and has the tools and the agility to do it in rough country. Born at 82 lb then accelerated to a YW ratio of 105 in a big group of bulls. Sleep all night and then brand a stout set of calves on your heifers.



JGM Free Lunch 837F

69 JGM MEZCAL 4134M

ASA 4478551 | 25% SIM, 75% ANGUS | BD 4/30/24
RED GENE CARRIER | HOM. POLLED | SC: 40.5 CM

JGM FREE LUNCH 837F	CED	BW	WW	YW
JGM JALAPENO H23J	10.3	1.0	90	139
JGM EVERELDA MAID 2095K	CE Score	MCE	Milk	STAY
JGM EVERELDA MAID 4NI	★	5.7	26	16.7
JGM YOSEMITE 1N12	CW	Marb.	RE	Fat
	52	.53	.51	.042

A Free Lunch grandson out of a baldy bull we kept until he got a better job, this quarter blood bull is out of a powerful Angus cow and his numbers reflect her merit for growth. Monstrous YW ratio of 116 after posting an adjusted WW of 731 lb - he is a power bull.



JGM Jalapeno - the Free Lunch son that is the sire of lot 69



We are blessed to live in a great neighborhood, and to trade help with our outstanding neighbors. Thank You so much to each and every one of you - we deeply appreciate it, we enjoy it, and we hope we can return the favor.

LD PHOTOGRAPHY

70 CFCC MIDNIGHT 4110M

ASA 4471189 | 50% SIM, 50% ANGUS | BD 4/1/24
HOMO. BLACK, HOMO. POLLED

JGM FREE LUNCH 837F	CED	BW	WW	YW
JGM MISS WIX TN 327A	8.4	1.3	76	123
CFCC LADY 3PU5	CE Score	MCE	Milk	STAY
O C C ECHELON 857E	★	4.5	28	15.6
	CW	Marb.	RE	Fat
	56	.53	.93	-0.18

71 CFCC MANHOOD 4114M

ASA 4471193 | 50% SIM, 50% ANGUS | BD 4/5/24
HOM. BLACK | HOM. POLLED

	CED	BW	WW	YW	CE	MCE	Milk	STAY	CW	Marb	RE	FAT
EPD	11.5	-4	74.5	128.8	★	6.3	26.7	17.4	47.2	.59	.59	-.003



ET Full Brothers

Proven performance and longevity in spades right here in these ET full brothers. Their dam and 2 grandams have combined to raise 32 natural calves with no misses in fertility except for being taken out of production to be flushed a time or two. Statistically they offer a lot of payweight and marbling especially relative to mature size. They are both in the top 15% of the population on the new \$Gain index which accounts for both rate of gain and feed efficiency. This is a safe bet that will keep you on the high side of the middle of the road and out of the ditches.

JGM HEAVYWEIGHT 029H

Age 6 | 50% Sim, 50% Angus

Purchased in the 2022 sale by Chrisman & Stamm, Heavyweight has been evaluated through our performance and carcass test program and proven himself to be an elite calving ease sire that offers solid payweight and carcass value. He is top 2% CE, top 1% MCE while being right at breed average for CW and top 30% \$Gain index. An aggressive breeder who does a majority of the work in a multi-sire pasture, I expect his sons to do the same. This entire group was sired by natural service. He is really consistent in his ability to sire calving ease combined with enough frame and especially length to add pounds to as they grow and develop. I expect his daughters to be good as he is backed by very solid cows and projects a top 10% STAY EPD.

	CED	BW	WW	YW	MCE	MILK	STAY	CW	MARB	RE	FAT
EPD	20.5	-4.3	68.7	103.6	12.3	15	20.4	37.9	.32	.67	-.004
%Rank	2%	4%	80%	85%	1%	99%	10%	50%	65%	55%	85%



JGM Heavyweight 029H

72 CFCC MANIFOLD 472M

ASA 4487545 | 50% SIM, 50% ANGUS | BD 9/18/24
HOM. BLACK | HOM. POLLED

CCR SPARTAN 9124A	CED	BW	WW	YW
JGM HEAVYWEIGHT 029H	13.6	-.9	67	103
JGM MISS BONNIE TN 326A	CE Score	MCE	Milk	STAY
CCR STOCKMAN 8033E	2★	8.8	20	19
CFCC SUNCHASER 281K	CW	Marb.	RE	Fat
CFCC SUNCHASER 817F	33	.34	.67	.008
BUFORD BLUESTEM 9974				

A stout made bull that combines top third CE with top 10% on the \$Gain index. He descends from a cow family that has been good to me for 30 years. Moderate birth, great growth and long lived cows backed up by a top 20% STAY EPD.

3/4 Brothers

73 CFCC MARVEL 490M

ASA 4487563 | 50% SIM, 50% ANGUS | BD 9/29/24
HOM. BLACK | HOM. POLLED

CCR SPARTAN 9124A	CED	BW	WW	YW
JGM HEAVYWEIGHT 029H	22	-4.9	69	107
JGM MISS BONNIE TN 326A	CE Score	MCE	Milk	STAY
CCR STOCKMAN 8033E	4★	12.2	23	20
CFCC CLOVA PRIDE 278K	CW	Marb.	RE	Fat
CFCC CLOVA PRIDE 9M5	48	.46	.63	.007
CCA EMBLAZON 702				

Elite top 1% CE in a half blood Simm is a rare find. Starting at 62lbs. he pushed on to record a 110 NR and 105 YR and is top 25% for CW EPD. Maternally strong with a top 10% STAY ranking he also offers added value on the rail ranking well above average for MARB. This gentle bull offers a lot of value beyond his calving ease.

74 CFCC MAESTRO 477M

ASA 4487550 | 62% SIM, 38% ANGUS | BD 9/22/24
HOM. BLACK | HOM. POLLED

CCR SPARTAN 9124A	CED	BW	WW	YW
JGM HEAVYWEIGHT 029H	18.7	-2.8	65	96
JGM MISS BONNIE TN 326A	CE Score	MCE	Milk	STAY
CLRS HOMELAND 327H	4★	9.9	21	18
CFCC LADY 200IK	CW	Marb.	RE	Fat
CFCC LADY 3PU5	29	.42	.78	-.005
TRIPLE C SINGLETARY S3H				

Visually he is my favorite in this sire group due to the extra jump muscle and top shape with plenty of length and width throughout and a very attractive head. Descending from our 3PU5 donor he started at 73lbs. he offers top 5% CE and grew well with a 100 NR & 101 YR. His extra gentle and great uddered dam is among my favorites.

75 CFCC LMC MIGHTY MINION 473M

ASA 4487546 | 50% SIM, 50% ANGUS | BD 9/20/24
HETERO BLACK | HOM. POLLED

CCR SPARTAN 9124A	CED	BW	WW	YW
JGM HEAVYWEIGHT 029H	19.3	-4.2	73	113
JGM MISS BONNIE TN 326A	CE Score	MCE	Milk	STAY
CFC CORNERSTONE M71	4★	10.5	21	17
CFCC LMC PETRA 220K	CW	Marb.	RE	Fat
CFCC PETRA 012H	34	.39	.64	-.004
CCR BOULDER 1339A				

This complete and well balanced bull belongs to Lena. He offers top 4% CE starting at 67lbs. and grew very well into a 106 NR & 107 YR. Lena named the bull and it really fits him well considering how he started and what he has accomplished thus far.

76 CFCC MEDDLER 493M

ASA 4487566 | 50% SIM, 50% ANGUS | BD 9/30/24
HOM. BLACK | HOM. POLLED

CCR SPARTAN 9124A	CED	BW	WW	YW
JGM HEAVYWEIGHT 029H	19.8	-5.5	56	83
JGM MISS BONNIE TN 326A	CE Score	MCE	Milk	STAY
CFCC GODFATHER 916G	4★	10	20	22
CFCC BLACKBIRD 251K	CW	Marb.	RE	Fat
CFCC BLACKBIRD 936G	27	.48	.71	-.012
SA V BRUSIER 9164				

Born to our most prolific and fertile cow family, Meddler offers top 4% CE and started at 65lbs. but went on to record a 98 YR. He is more moderate in his frame and has a lot of volume and a small well-shaped head. He boasts a top 3% STAY ranking and is well above average for MARB.

77 CFCC MALARKY 480M

ASA 4487553 | 50% SIM, 50% ANGUS | BD 9/23/24
HOM. BLACK | HOM. POLLED

CCR SPARTAN 9124A	CED	BW	WW	YW
JGM HEAVYWEIGHT 029H	18	-1.5	71	105
JGM MISS BONNIE TN 326A	CE Score	MCE	Milk	STAY
BUFORD BLUESTEM 9974	4★	11.7	19	22
CFCC PANDORA 124J	CW	Marb.	RE	Fat
CFCC PANDORA 423B	32	.35	.61	-.024
3C PASQUE Y1752 B				

Top 10% CE with solid individual performance of 100 NR & 100 YR. His cow family has been with us 30 years and they are gentle, productive, good uddered and long lasting, which is in alignment with his top 2% STAY ranking. He is long-made with more stifle muscle and center rib than most of the sire group.

78 CFCC MEMENTO 488M

ASA 4487561 | 50% SIM, 50% ANGUS | BD 9/28/24
HOM. BLACK | HOM. POLLED

CCR SPARTAN 9124A	CED	BW	WW	YW
JGM HEAVYWEIGHT 029H	17.7	-3.8	65	96
JGM MISS BONNIE TN 326A	CE Score	MCE	Milk	STAY
SHIPWHEEL CHINOOK	4★	9.1	18	15
CFCC LOLITA H6J	CW	Marb.	RE	Fat
CFCC LOLITA 852F	34	.25	.49	-.015
HOOKS TRINITY 9T				

A really gentle bull that is long bodied, long necked and good-headed. Top 10% CE with great individual performance of 102 NR and 102 YR. There is a lot of uniformity in this sire group. Buy as many as you need plus one extra.



CFC Cornerstone M71 - MGS of lot 75



CLRS Homeland 327H



CLRS Homeland 327H

Age 6 | 62% Sim, 38% Angus

Homeland, a son of 231A is a featured sire at ABS that has seen heavy use nationwide. He is elite for his combination of growth, marbling, and stayability while also siring very attractive cattle that with extra muscle shape that still grow. His progeny are consistent and powerful, and we like what we have seen from his daughters in production here, they are big-hipped cows with outstanding udder quality. It's hard to find one with this combination of phenotype and figures.

	CED	BW	WW	YW	MCE	MILK	STAY	CW	MARB	RE	FAT
EPD	8.9	.5	89.7	139.4	5.7	18.9	21.2	48.2	.5	1.34	-.072
%Rank	75%	65%	15%	20%	75%	90%	4%	25%	35%	1%	10%

79 CFCC MEADOWLARK 4115M

ASA 4471194 | 62% SIM, 38% ANGUS | BD 4/7/24
HOM. BLACK | HOM. POLLED |

REDHILL 672X X004 231A	CED	BW	WW	YW
CLRS HOMELAND 327H	4.2	4.2	95	151
CFCC LADY 3PU5	CE Score	MCE	Milk	STAY
C F C LADY 1E4	★	4.5	27	19.2
O C C ECHELON 857E	CW	Marb.	RE	Fat
	57	.64	1.05	-.073

Outstanding individual with extra length, masculinity and a real herd bull presence about him. He is closely related to lots 87-93 on both sides of his pedigree. His 12 yo donor dam records 9 @ 108 NR and 8 @ 104 YR. Top 10% WW, YW, CW, REA & STAY. Top 20% MARB. One of my favorites.

81 JGM MAINSAIL 4052M

ASA 4478361 | 50% SIM, 50% ANGUS | BD 4/15/24
HOM. BLACK | HORN GENE CARRIER | SC: 38.5 CM

REDHILL 672X X004 231A	CED	BW	WW	YW
CLRS HOMELAND 327H	10.7	.8	82	141
JGM LOLITA 917G	CE Score	MCE	Milk	STAY
JGM LOLITA 742E	★	6.1	19	15.9
MR NLC ENTREPRENEUR 1227	CW	Marb.	RE	Fat
	47	.54	.75	-.025

Always a stout sire group, the Homeland sons mature into impressive bulls. Mainsail stems from a beautiful Emblazon 702 cow from a strong cow family, his 17 year old grandam is being flushed right now. Solid balance of maternal and terminal traits wrapped up in a masculine, beefy package with a lot of weight relative to frame.

82 JGM MAINSTAY 4090M

ASA 4478386 | 44% SIM, 56% ANGUS | BD 4/19/24
HOM. BLACK | HOM. POLLED | SC: 42.5 CM

REDHILL 672X X004 231A	CED	BW	WW	YW
CLRS HOMELAND 327H	7.2	2.3	86	133
JGM ELBREA ERIKA 8178F	CE Score	MCE	Milk	STAY
JGM ELBREA ERIKA 5M7	★	6.6	19	18.1
CCA EMBLAZON 702	CW	Marb.	RE	Fat
	49	.34	.82	-.032

Built like a boxcar with a sleek front end and a tight sheath, Mainstay ratioed 103 WW and 108 YW. His dam is a wide gauged cow that makes a habit of weaning mid 6 wt calves that winter well and make the replacement cut.

83 JGM MAINTAIN 4055M

ASA 4478363 | 63% SIM, 37% ANGUS | BD 4/16/24
HOM. BLACK | HOM. POLLED | SC: 37.5 CM

REDHILL 672X X004 231A	CED	BW	WW	YW
CLRS HOMELAND 327H	5	.8	78	117
JGM MIRAGE I120J	CE Score	MCE	Milk	STAY
JGM MIRAGE 740E	★	4.2	19	13
HOOKS TRINITY 9T	CW	Marb.	RE	Fat
	43	.39	1.11	-.068

Stout boned, big footed, and beefy down his top, 4055 will inject muscle in most matings and would work especially well on higher percentage Angus cows to provide the heterosis and complementary benefits of a Continental breed. Calves by a rugged Stockman daughter, his power and performance come from both sides of the pedigree.



CFCC Sunchaser 612D -
Dam of Lot 80 & Grandam of lots 98, 99, 120

80 CFCC MUFASSA 4126M

ASA 4471260 | 62% SIM, 38% ANGUS | BD 4/6/24
HOM. BLACK | HOM. POLLED

REDHILL 672X X004 231A	CED	BW	WW	YW
CLRS HOMELAND 327H	9.6	1.5	84	132
CFCC SUNCHASER 612D	CE Score	MCE	Milk	STAY
302A	★	5.9	19	21.1
TNT TANKER U263	CW	Marb.	RE	Fat
	51	.40	.81	-.037

Another really long-made son of Homeland. His dam has been a donor in the past and has sold several sons through this sale and has many daughters working in our herd. Designed to produce top females and steer calves that should be above average for both muscling and marbling with elite pay weight. Top 20% CW, Top 3% STAY.



CLRS Homeland 327H

84 JGM MAINLAND 430M

ASA 4478260 | 63% SIM, 37% ANGUS | BD 4/9/24
HOM. BLACK | HOM. POLLED | SC: 39 CM

REDHILL 672X X004 231A	CED	BW	WW	YW
CLRS HOMELAND 327H	13.1	-7	88	140
CLRS ALWAYS XCELLENT TNT TANKER U263	CE Score	MCE	Milk	STAY
JGM MISS BONNIE 169J	2★	8.4	21	22.6
JGM MISS BONNIE 5D3 SITZ DASH 10277	CW	Marb.	RE	Fat
	56	.26	1.09	-.058

Big numbers for growth and ribeye combined with elite Stayability makes Mainland an opportunity for those of you looking to put some punch in Angus cows without sacrificing maternal function. His impressive young Tanker dam is producing at an impressive pace thus far.

85 JGM MAINLINE 445M

ASA 4478290 | 50% SIM, 50% ANGUS | BD 4/10/24
HOM. BLACK | HOM. POLLED | SC: 36.5 CM

REDHILL 672X X004 231A	CED	BW	WW	YW
CLRS HOMELAND 327H	20.8	-4.3	57	86
CLRS ALWAYS XCELLENT JGM DLIBERATE 6A3	CE Score	MCE	Milk	STAY
JGM LOLITA 9167G	4★	9.6	22	23.2
JGM BLACK LOLITA 531C OCC JETFECK 133N	CW	Marb.	RE	Fat
	30	.60	.67	-.023

Lot 85 offers the same beef bull shape as his brothers, but his credentials place him in the heifer bull pen with a top shelf CE EPD backed by a low BW mama. Also ranks top 1% for stayability and top 25% for marbling.

86 JGM MAINFRAME 452M

ASA 4478279 | 50% SIM, 50% ANGUS | BD 4/10/24
HOM. BLACK | HOM. POLLED | SC: 41 CM

REDHILL 672X X004 231A	CED	BW	WW	YW
CLRS HOMELAND 327H	15.8	-3.2	72	116
CLRS ALWAYS XCELLENT JGM ETHOSES 705E	CE Score	MCE	Milk	STAY
JGM MISS MIRAGE 036H	4★	9.4	17	18.1
JGM TF MISS MIRAGE 1088Y TF LEGENDARY	CW	Marb.	RE	Fat
	48	.37	.86	-.032

The 2nd Homeland in the CE group, Mainframe is flashy and cool looking from the side with plenty of muscle shape and a herd bull look to his head. Hard to poke a hole in phenotypically, he reminds me of his dam's front pasture good looks.



LD PHOTOGRAPHY



Redhill 672X X004 231A

Age 13 | 63% Simmental 37% Angus

231A is an ABS stud bull that we selected to use for his ability to pack extra pounds of red meat onto a moderate mature frame while leaving daughters that are moderate in milk and really good uddered. This bull was still being used natural service at 10 years and we expect the same longevity from his sons and daughters. 231A is the sire of Homeland who sired lots 79-86 in this sale.

	CED	BW	WW	YW	MCE	MILK	STAY	CW	MARB	RE	FAT
EPD	10	-0.5	86.7	143.9	8.3	9.5	21.3	46.5	.5	1.2	-.064
%Rank	70%	45%	25%	15%	30%	99%	4%	30%	35%	2%	15%

Lot 87 - 93 are ET Full Brothers

87 CFCC MISSION IMPOSSIBLE 4101M

ASA 4471180 | 62% SIM, 38% ANGUS | BD 4/10/24
HOM. BLACK | HOM. POLLED

GW STEP OUT 672X	CED	BW	WW	YW
REDHILL 672X X004 231A	2.2	4	96	158
GW MISS PREM BEEF X004 TRIPLE C SINGLETARY S3H	CE Score	MCE	Milk	STAY
CFCC LADY 3PU5	★	4.2	22	18.2
C F C LADY 1E4 OCC ECHELON 857E	CW	Marb.	RE	Fat
	61	.43	.93	-.045

This large set of full brothers are designed to excel for every segment of the industry. They offer elite payweight, marbling, and ribeye for the packer, superior gainability for the feeder, and longevity and fertility for the breeder. Their 12 yo dam is still working and has produced 60-plus progeny for us thus far. She records 9 @ 108 NR and 8 @ 104 YR on her natural born calves. Grandam is still in the herd at 14 and records 9 @ 108 NR & 8 @ 107 YR. If you feed your cattle to finish and raise your own replacement females, then take some time to study this group and put several of them together.

88 CFCC MARCO POLO 4103M

ASA 4471182 | 62% SIM, 38% ANGUS | BD 4/1/24
HOM. BLACK | HOM. POLLED

	CED	BW	WW	YW	CE	MCE	Milk	STAY	CW	MARB	RE	FAT
EPD	2.3	5.5	96	161	★	4.2	22	18.2	67	.48	1.2	-.045

89 CFCC MULAH 4104M

ASA 4471183 | 62% SIM, 38% ANGUS | BD 3/28/24
HOM. BLACK | HOM. POLLED

	CED	BW	WW	YW	CE	MCE	Milk	STAY	CW	MARB	RE	FAT
EPD	3.9	2.3	88	149	★	5.8	22	20.5	52	.44	1	-.066

90 CFCC MERCURY 4105M

ASA 4471184 | 62% SIM, 38% ANGUS | BD 4/3/24
HOM. BLACK | HOM. POLLED

	CED	BW	WW	YW	CE	MCE	Milk	STAY	CW	MARB	RE	FAT
EPD	7.4	2.6	89	143	★	6.5	22	20.9	49	.49	.92	-.047



Redhill 672X X004 231A

91 CFCC MILLWRIGHT 4106M

ASA 4471185 | 62% SIM, 38% ANGUS | BD 3/29/24

HOM. BLACK | HOM. POLLED

	CED	BW	WW	YW	CE	MCE	Milk	STAY	CW	Marb	RE	FAT
EPD	9.5	.3	82	137	★	7.5	22	24.2	46	.50	1	-.039

92 CFCC MAVERICK 4108M

ASA 4471187 | 62% SIM, 38% ANGUS | BD 4/6/24

HOM. BLACK | HOM. POLLED

	CED	BW	WW	YW	CE	MCE	Milk	STAY	CW	Marb	RE	FAT
EPD	11.9	-1.4	78	125	★	8.2	22	21.8	35	.62	.75	-.025

93 CFCC MARBLER 4109M

ASA 4471188 | 62% SIM, 38% ANGUS | BD 4/5/24

HOM. BLACK | HOM. POLLED

	CED	BW	WW	YW	CE	MCE	Milk	STAY	CW	Marb	RE	FAT
EPD	2.8	2.7	89	152	★	4.9	22	16.1	67	.76	1.07	-.047

94 CFCC MANCHILD 443M

ASA 4487517 | 62% SIM, 38% ANGUS | BD 9/2/24

HOM. BLACK | HOM. POLLED

	CED	BW	WW	YW
GW STEP OUT 672X				
REDHILL 672X X004 231A	1.1	4.8	100	171
	CE Score	MCE	Milk	STAY
GW MISS PREM BEEF X004				
CCR STOCKMAN 8033E	★	2.9	20	17.2
	CW	Marb.	RE	Fat
CFCC BLACKBIRD 034H				
CFCC BLACKBIRD 762E	75	.29	1.45	-.090
GW BREAKOUT 457C				

Correctly named this bull is chock full of muscle and power throughout. Top 1% YW, ADG, \$GN, CW, REA. 122NR, 113YR. Dam has 3 @ 354 day calving interval, great grandam is 10 and still producing and is the dam of lot 96. There is birthweight here. Use on mature cows only. Note lots 94 - 96 are all out of same cow family.

95 CFCC MESSENGER 437M

ASA 4487511 | 62% SIM, 38% ANGUS | BD 8/31/24

HOM. BLACK | HOM. POLLED

	CED	BW	WW	YW
GW STEP OUT 672X				
REDHILL 672X X004 231A	15.4	-1.9	71	106
	CE Score	MCE	Milk	STAY
GW MISS PREM BEEF X004				
MR NLC ICON X0104	2★	10.4	19	23
	CW	Marb.	RE	Fat
CFCC BLACKBIRD 631				
C F C BLACKBIRD IV18 OF 132	32	.45	.63	-.014
C F C FIRST STEP 9V1				

A high volumed and thick-made bull that is sound on the move. He records 89BR, 101NR & 98YR. His 9yo dam has a 364 day calving interval and records 7@104BR, 106NR, & 6@103YR. She produced a top-seller last year, our thanks to the Kuenning family. Top 20% CE, top 25% \$GN and top 1% STAY.



CFCC Lady 3PU5 - Dam of Lots 87-93

96 CFCC MANDOLIN 438M

ASA 4487512 | 50% SIM, 50% ANGUS | BD 8/31/24

HOM. BLACK | HOM. POLLED

	CED	BW	WW	YW
GW STEP OUT 672X				
REDHILL 672X X004 231A	11.9	-1.5	63	101
	CE Score	MCE	Milk	STAY
GW MISS PREM BEEF X004				
C F C COLD POWDER 2C51	★	7.6	19	20.3
	CW	Marb.	RE	Fat
CFCC BLACKBIRD 5C15				
CFCC BLACKBIRD 3PU2	28	.45	.54	-.030
TRIPLE C SINGLETARY S3H				

Long-bodied and very athletic with good base-width, this bull is complete and very similar to lot 95 as you would expect as lots 94-96 are all out of the same cow family. His 10 yo dam has a 360 day calving interval and has sold at least 4 good sons through past sales. Given this his top 5% ranking for STAY is not surprising.

97 CFCC MANFREDI 413M

ASA 4487487 | 62% SIM, 38% ANGUS | BD 8/26/24

HOM. BLACK | HOM. POLLED

	CED	BW	WW	YW
GW STEP OUT 672X				
REDHILL 672X X004 231A	9.9	-7	77	122
	CE Score	MCE	Milk	STAY
GW MISS PREM BEEF X004				
SAND RANCH HAND	★	7.5	17	20.9
	CW	Marb.	RE	Fat
CFCC HULETTE 120J				
CFCC HULETTE 937G	34	.38	.86	-.070
SA V BRUSIER 9164				

A very balanced and complete individual, both visually and on paper. He records a 107NR & 105YR. His younger dam has a 353-day calving interval and records 2@109 NR, 2@104 YR. Grandam has a 367-day interval, and GGD is 362, both still producing. Unique combination of top 4% breed ranking on \$GN and STAY.

98 CFCC MARENGO 427M

ASA 4487501 | 62% SIM, 38% ANGUS | BD 8/28/24

HOM. BLACK | HOM. POLLED

	CED	BW	WW	YW
GW STEP OUT 672X				
REDHILL 672X X004 231A	12.9	-7	74	115
	CE Score	MCE	Milk	STAY
GW MISS PREM BEEF X004				
SAND RANCH HAND	2★	8.5	15	17.4
	CW	Marb.	RE	Fat
CFCC SUNCHASER 008H				
CFCC SUNCHASER 612D	41	.38	.99	-.080
CCA EMBLAZON 702				

A notch smaller in his frame size, I do like the capacity, rib shape and extreme docility that this bull displays. His dam is a smaller cow that has been steady in her production and very fertile with a 361 day calving interval. Note he is a full brother in blood to lot 99.

99 CFCC MARMOT 422M

ASA 4487496 | 62% SIM, 38% ANGUS | BD 8/28/24

HOM. BLACK | HOM. POLLED

	CED	BW	WW	YW
GW STEP OUT 672X				
REDHILL 672X X004 231A	18.1	-4.2	71	110
	CE Score	MCE	Milk	STAY
GW MISS PREM BEEF X004				
SAND RANCH HAND	4★	10.7	15	19.2
	CW	Marb.	RE	Fat
CFCC SUNCHASER 018H				
CFCC SUNCHASER 612D	32	.33	.94	-.028
CCA EMBLAZON 702				

The lone heifer bull option in this sire group, he ranks in the top 10% of the breed for his ability to calve unassisted when used on heifers. His dam is a sexy looking and very fertile with a 358 day calving interval. Note that he is a full brother in blood to lot 98.

3/4
Brothers



JGM Jefe 181J

JGM JEFE 181J

Age 4 | 50% Sim 50% Angus

Jefe was the boss of the bulls a few years ago and we retained him for a variety of reasons- he is a halfblood Super Puncher son out of a cow that is now 14 and after weaning a calf this fall is currently being flushed. His numbers are well-balanced, ranking him high for growth and elite for feedlot gain and carcass weight. His dam is an ideal cow in terms of femininity, fleshing ability, and udder quality. We are using him hard and think these cattle will work in a variety of systems. Jefe progeny consistently display extra length and weigh up well while remaining attractive and clean-jointed. Simmental power with Angus convenience traits. Popular as a display bull at last years sale, his picture speaks for itself.

Semen available.

	CED	BW	WW	YW	MCE	MILK	STAY	CW	MARB	RE	FAT
EPD	8.6	.7	81.4	130.8	7.6	23.4	13.9	60.4	.4	.75	-.035
%Rank	80%	65%	40%	35%	40%	55%	65%	10%	50%	40%	50%



100 JGM ME GUSTA 469M

ASA 4478295 | 37% SIM, 63% ANGUS | BD 4/11/24
HOM. BLACK | HOM. POLLED | SC: 41 CM

SFG SUPER PUNCHER F820	CED	BW	WW	YW
JGM JEFE 181J	13.6	-2.3	67	109
JGM RECC MISS MIRAGE 1142Y	CE Score	MCE	Milk	STAY
JGM AMERICAN MUSCLE B438	2★	10	23	20
JGM MISS SANDHILLS AM 699D	CW	Marb.	RE	Fat
1068Y TF LEGENDARY	26	.49	.34	-.014

Having trouble with the names, try google interpreter to see what I think of this one. His impressive mother has raised some awesome heifers, and this guy fits the same mold. He will be one to make sure you look over.

3/4 Brothers

101 JGM MUY BUENO 4179M

ASA 4478436 | 37% SIM, 63% ANGUS | BD 5/8/24
HOM. BLACK | HOM. POLLED | SC: 40

SFG SUPER PUNCHER F820	CED	BW	WW	YW
JGM JEFE 181J	9.6	-.8	67	110
JGM RECC MISS MIRAGE 1142Y	CE Score	MCE	Milk	STAY
JGM AMERICAN MUSCLE B438	★	8.1	23	17.5
JGM IDEAL LADY AM 679D	CW	Marb.	RE	Fat
JGM IDEAL LADY OZZ E&B BLUEPRINT 691	41	.33	.42	-.002

Fits the same mold as his 3/4 brother just before him, we love our American Muscle daughters and are excited to lead off the Jefe sire group with this pair. Somebody needs to take this pair home together and reap what you sow.



Weston, also an NCTA student, helps up part-time. We appreciate the help!

102 JGM MOXIE 4021M

ASA 4478335 | 37% SIM, 63% ANGUS | BD 4/14/24
HOM. BLACK | HOM. POLLED | SC: 40 CM

SFG SUPER PUNCHER F820	CED	BW	WW	YW
JGM JEFE 181J	8.3	.4	71	114
JGM RECC MISS MIRAGE 1142Y	CE Score	MCE	Milk	STAY
JGM ENSURE 758E	★	7.1	27	20
JGM BLACKBIRD 0178H	CW	Marb.	RE	Fat
JGM BLACKBIRD 5G4 GDAR GAME DAY 449	38	.48	.30	.003

Moxie is a big stout baldy composite bull whose grandam is the dam of our Angus herdsire Family Time. He is big nutted, big outlined, long spined, and square out of his hip. He stacked up ratios of 99 BW, 109 WW, and 107 YW and is the kind of baldy anybody can like. Lot 102 and 103 are 3/4 brothers.

3/4 Brothers

103 JGM MERCEDES 4068M

ASA 4478371 | 37% SIM, 63% ANGUS | BD 4/17/24
HOM. BLACK | HOM. POLLED | SC: 39 CM

SFG SUPER PUNCHER F820	CED	BW	WW	YW
JGM JEFE 181J	7.1	.7	67	109
JGM RECC MISS MIRAGE 1142Y	CE Score	MCE	Milk	STAY
JGM ENSURE 758E	★	6.7	28	15.3
JGM MERLE 0209H	CW	Marb.	RE	Fat
JGM MERLE 4C16 COLE CREEK FULL BORE 730	44	.34	.36	-.032

Lot 102 and 103 are 3/4 brothers, this one is solid black but very similar to his brother in that he is big, long, and performed above average every time he stepped on the scale. Not much wrong with this pair of brothers.



The easy fleshing and productive dam of Jefe pictured at 11 years of age with his full brother



104 JGM MALIK 4180M

ASA 4478437 | 50% SIM, 50% ANGUS | BD 5/8/24
HOM. BLACK | HOM. POLLED | SC: 41 CM

SFG SUPER PUNCHER F820	CED	BW	WW	YW
JGM JEFE 181J	-2	6.1	94	151
JGM RECC MISS MIRAGE I142Y	CE Score	MCE	Milk	STAY
CCR SPARTAN 9124A				
JGM EVERELDA MAID 863F	★	3.2	17	14
JGM EVERELDA MAID 427B	CW	Marb.	RE	Fat
TNT TANKER U263	73	.46	.88	-.052

Square hipped and correct in his lines, 4180 is a power bull that will make the kind of feeders that interest every buyer in the seats, and his carcass projections would indicate they will generate premiums at every step. His purpose is siring stout baldy steers and fancy replacements with some chrome.



JGM Mirage 059H, full sister to Jefe, also the dam of lot 53.

105 JGM MERCADO 411M

ASA 4478249 | 37% SIM, 63% ANGUS | BD 4/7/24
HOM. BLACK | HOM. POLLED | SC: 38 CM

SFG SUPER PUNCHER F820	CED	BW	WW	YW
JGM JEFE 181J	12.2	-2.9	57	93
JGM RECC MISS MIRAGE I142Y	CE Score	MCE	Milk	STAY
JGM BEEFCAKE 428B				
JGM MIRAGE 8161F	2★	10.2	23	20.1
8135	CW	Marb.	RE	Fat
TF MS ANGUS	42	.40	.24	-.013

A solid and complete Jefe son out of a feminine and moderate BW cow, he could work on heifers in a pinch but would be just the ticket on a set of 2nd calvers.

106 JGM MIRAGE 490M

ASA 4478315 | 50% SIM, 50% ANGUS | BD 4/12/24
RED GENE CARRIER | HOM. POLLED | SC: 40 CM

SFG SUPER PUNCHER F820	CED	BW	WW	YW
JGM JEFE 181J	7.4	-1.5	73	114
JGM RECC MISS MIRAGE I142Y	CE Score	MCE	Milk	STAY
TNT TANKER U263				
JGM MIRAGE 858F	★	6.7	22	16.2
1102	CW	Marb.	RE	Fat
TF MS ANGUS	53	.37	.59	-.015

Jefe son from a stout Tanker dam that is an ideal range cow. He may be the favorite in this pen for some, he is a really nice baldy that is easy to like and solid on paper.

107 JGM MARVEL 4149M

ASA 4478420 | 37% SIM, 63% ANGUS | BD 5/2/24
HOM. BLACK | HOM. POLLED | SC: 38.5 CM

SFG SUPER PUNCHER F820	CED	BW	WW	YW
JGM JEFE 181J	7.2	2.8	73	117
JGM RECC MISS MIRAGE I142Y	CE Score	MCE	Milk	STAY
RECC/JGM SUPERMAN 430				
JGM MISS BURGESS 8152F	★	5.5	22	13.7
JGM MISS BURGESS 5D5	CW	Marb.	RE	Fat
SITZ DASH 10277	59	.16	.77	-.039

If you like lot 106 but need them homozygous black, this one is an easy substitution to make. His dam is a big barreled Superman daughter that goes back to one of our best Dash cows. Numbers up almost exactly like lot 107 and resembles him phenotypically.

108 JGM MAGNATE 4116M

ASA 4478401 | 50% SIM, 50% ANGUS | BD 4/26/24
HOM. BLACK | HOM. POLLED | SC: 43 CM

SFG SUPER PUNCHER F820	CED	BW	WW	YW
JGM JEFE 181J	16.1	-2.3	64	107
JGM RECC MISS MIRAGE I142Y	CE Score	MCE	Milk	STAY
ROUSEY COUNTRY WIDE I38Y				
JGM MISS WIX 712E	3★	9.1	28	15.9
JGM MISS WIX TN 327A	CW	Marb.	RE	Fat
TNT TANKER U263	53	.17	.49	-.022

Magnate is a long, deep, heavy bull that is solid black and big-nuttled. His dam is a lower BW cow that is a maternal sister to Free Lunch, making him a potential heifer bull, and he is a 3/4 brother to the next bull in line with similar credentials.

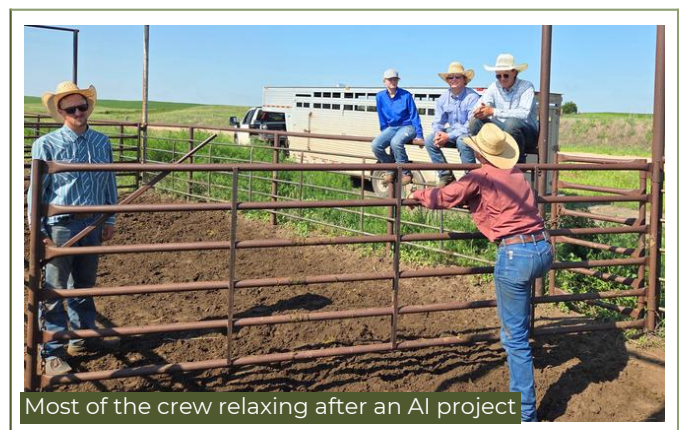
3/4 Brothers

109 JGM MOGUL 4136M

ASA 4478410 | 50% SIM, 50% ANGUS | BD 4/30/24
RED GENE CARRIER | HOM. POLLED | SC: 37.5 CM

SFG SUPER PUNCHER F820	CED	BW	WW	YW
JGM JEFE 181J	16.5	-2.3	66	110
JGM RECC MISS MIRAGE I142Y	CE Score	MCE	Milk	STAY
ROUSEY COUNTRY WIDE I38Y				
JGM ROBIN 519C	3★	8.3	29	20.8
JGM RED ROBIN JF 201Z	CW	Marb.	RE	Fat
OCC JETFECK I33N	35	.57	.40	-.021

Another big crested, deep ribbed, 3 star CE bull that is a 3/4 brother to the previous lot. Stong for both marbling and stayability, he will sire steers and replacement females equally well.



Most of the crew relaxing after an AI project



JGM Jefe 181J

110 JGM MUCHACHO 4172M

ASA 4478432 | 50% SIM, 50% ANGUS | BD 5/7/24
HOM. BLACK | HORN GENE CARRIER | SC: 39.5 CM

SFG SUPER PUNCHER F820	CED	BW	WW	YW
JGM JEFE 181J	9.9	1.2	70	108
JGM RECC MISS MIRAGE 1142Y	CE Score	MCE	Milk	STAY
JGM CREDIBLE 510C	★	5.3	22	16.7
JGM GABI 8112F	CW	Marb.	RE	Fat
JGM 423B	49	.37	.74	-.042
OCC JETFECK 133N				

Kaitlin's bull, she writes that he is definitely a favorite of the herd, is nice looking with good color and character. She goes on to state that being out of a cow as good as Princess he is guaranteed to keep the good genetics going. Its late and I can't do much better than that, you can't miss him.



Lot 110 and his dam when he was tagged as a calf

111 JGM MARCAR 4027M

ASA 4478340 | 50% SIM, 50% ANGUS | BD 4/14/24
HOM. BLACK | HOM. POLLED | SC: 37 CM

SFG SUPER PUNCHER F820	CED	BW	WW	YW
JGM JEFE 181J	13.3	-.9	73	109
JGM RECC MISS MIRAGE 1142Y	CE Score	MCE	Milk	STAY
JGM FULLY AUTOMATIC 848F	★	7.8	22	14.7
JGM LOLITA 1176J	CW	Marb.	RE	Fat
JGM LOLITA 939G	36	.61	.66	-.029
JGM DIFFERENTIAL 628D				

Two generations of baldy sires and this bull comes out solid black, but with the same structure and masculinity of his sire and MGS. Out of a good young Fully Auto daughter, they make beautiful cows.

113 JGM MIDNIGHT EXPRESS 447M

ASA 4479677 | 37% SIM, 63% ANGUS | BD 4/10/24
HOM. BLACK | HOM. POLLED | SC: 39.5 CM

SFG SUPER PUNCHER F820	CED	BW	WW	YW
JGM HORSEPOWER 072H	16.6	-4.5	51	85
JGM RECC MISS ANSWER 1009	CE Score	MCE	Milk	STAY
N77R SIMANGUS	★	11.5	18	15.2
JGM NCC 9906G	CW	Marb.	RE	Fat
N77R 1144	39	.56	.50	-.011
ANGUS				

Out of a brother to Jefe that is owned by Hairpin Cattle Co, he has a bunch of brothers breeding cows there. This particular bull can be found in the lower BW group as he is a 3 star heifer bull with a 71 lb actual BW. Out of a solid Neiman-bred cow, his daughters will be the right kind.

112 JGM9 MUCHO 4102M

ASA 4531559 | 37% SIM, 63% ANGUS | BD 4/21/24
RED GENE CARRIER | HOM. POLLED | SC: 40 CM

SFG SUPER PUNCHER F820	CED	BW	WW	YW
JGM JEFE 181J	5.3	.8	75	116
JGM RECC MISS MIRAGE 1142Y	CE Score	MCE	Milk	STAY
WOODHILL FORESIGHT	★	4.6	25	10.4
B202	CW	Marb.	RE	Fat
JGM9 MS ANGUS	48	.26	.64	-.016
JGM9 MS ANGUS				

Out of a stout old Foresight daughter, Mucho got his dam's size, power, and stoutness of bone. His look and his white face scream quality. Ratios of 108 WW and 101 YW and over .6 for both marbling and ribeye.

114 JGM MONUMENTAL 4050M

ASA 4478359 | 50% SIM, 50% ANGUS | BD 4/15/24
HOM. BLACK | HOM. POLLED | SC: 40 CM

WS ALL-AROUND Z35	CED	BW	WW	YW
OMF EPIC E27	13.1	-.6	76	122
OMF TIME LESS B100	CE Score	MCE	Milk	STAY
CONNEALY CONTRAST	★	7.8	26	19.4
JGM MISS CONTRAST 302A	CW	Marb.	RE	Fat
1068Y	47	.30	.62	-.001
TF LEGENDARY				

Penned with the Jefe bulls, this lone Epic son is an F1 outcross power bull that out of a 13 year old Contrast daughter that is still going strong. Look him up, he is a beast.



SFG Superpuncher - Sire of Jefe and Horsepower, PGS of lots 100-114



OMF Epic - Sire of lot 114



WAGR Patriot 1008J



WAGR PATRIOT 1008J

Age 5 | Simmental

WAGR Patriot 1008J is a resident herdsire for our friends at Wagonhammer Ranch, where we first saw him as a yearling. We were able to walk him as a cleanup bull and also have used him pretty hard through AI. He is an elite individual that is phenotypically as good as any purebred Simmental sire we have viewed in many years. He is equally elite on paper with an outstanding array of EPDs. Expect more of these in the future.

	CED	BW	WW	YW	MCE	Milk	STAY	CW	Marb	RE	FAT
EPD	7.5	1.7	108.7	164.7	5.4	21.9	12.9	49.6	.34	1.42	-106
%Rank	75%	60%	1%	2%	60%	60%	75%	10%	25%	1%	10%

115 JGM9 MAGA 4118M

ASA 4531591 | 69% SIM, 31% ANGUS | BD 4/27/24

HOM. BLACK | HOM. POLLED | SC: 39 CM

	CED	BW	WW	YW
HOOK'S EAGLE 6E				
WAGR PATRIOT 1008J	15.7	-2.3	90	139
	CE Score	MCE	Milk	STAY
WAGR MS INNOVATOR 9048G				
JGM BABYBACK	3★	11	27	14.9
	CW	Marb.	RE	Fat
JGM9 MISS PERKINS 1874J				
F366	32	.41	.76	-0.60
JMC CORE VALUES 5G11				

New genetics for our customers in this sire group, starting with one that is in the CE pen, but looks like a power bull. He is a stud with a super set of figures.



JGM Babyback - MGS of lot 115

116 JGM MISSION CONTROL 4053M

ASA 4478524 | 50% SIM, 50% ANGUS | BD 4/16/24

HOM. BLACK | HOM. POLLED | SC: 39 CM

	CED	BW	WW	YW
HOOK'S EAGLE 6E				
WAGR PATRIOT 1008J	3.7	1.8	89	133
	CE Score	MCE	Milk	STAY
WAGR MS INNOVATOR 9048G				
JGM YOSEMITE IN12	★	3.7	24	10.6
	CW	Marb.	RE	Fat
JGM EVERELDA MAID 4N1				
E&B EVERELDA MAID 17	39	.45	.83	-0.47
SITZ TRAVELER 9929				

Big numbers, big ratios, and a big stout power bull that fits them perfect. A little later maturing, he's gonna be a big dude. Out of a long geared old Angus cow with a lot of longevity in both her and her dam.

118 JGM MADE IN AMERICA 4171M

ASA 4478431 | 63% SIM, 38% ANGUS | BD 5/7/24

HOM. BLACK | HOM. POLLED | SC: 37 CM

	CED	BW	WW	YW
HOOK'S EAGLE 6E				
WAGR PATRIOT 1008J	6.1	.8	96	156
	CE Score	MCE	Milk	STAY
WAGR MS INNOVATOR 9048G				
JGM FREE LUNCH 837F	★	5.6	22	12.1
	CW	Marb.	RE	Fat
JGM BLACKBIRD 8V1				
C F C URLACHER V53	71	.41	1.12	-0.45

Made in America is easy to find on paper, and his quiet disposition and stout composition will not disappoint you. Out of a promising Free Lunch daughter with good records.

117 JGM MEMORIAL 4086M

ASA 4479663 | 50% SIM, 50% ANGUS | BD 4/19/24

HOM. BLACK | HOM. POLLED | SC: 37 CM

	CED	BW	WW	YW
HOOK'S EAGLE 6E				
WAGR PATRIOT 1008J	6.6	2	86	139
	CE Score	MCE	Milk	STAY
WAGR MS INNOVATOR 9048G				
NCC FULL BORE 3083	★	7	19	11.6
	CW	Marb.	RE	Fat
JGM MISS NCC 654				
ANGUS	51	.17	1.11	-0.57
ANGUS				

Super Angus cow behind this one, my favorite out of the Neiman dispersal. She did not disappoint with this guy, he is one of the best with big numbers to boot.

119 JGM MY COUNTRY 4228M

ASA 4478571 | 50% SIM, 50% ANGUS | BD 5/26/24

HOM. BLACK | HOM. POLLED | SC: 36.5 CM

	CED	BW	WW	YW
HOOK'S EAGLE 6E				
WAGR PATRIOT 1008J	10.5	-2	87	128
	CE Score	MCE	Milk	STAY
WAGR MS INNOVATOR 9048G				
E&B PLUS ONE	★	2.6	22	11.3
	CW	Marb.	RE	Fat
IN6J				
9T4	30	.40	1.03	-0.43
HAYNES OUTRIGHT 452				

Good looking, square made blaze faced bull with a huge WW ratio of 119. Top 25% for weaning weight and top 10% for ribeye, he is sure to add some muscle shape.



WAGR Patriot 1008J

120

CFCC MUKISSA 418M

ASA 4487492 | 62% SIM, 38% ANGUS | BD 8/28/24
HOM. BLACK | HOM. POLLED

HOOK'S EAGLE 6E	CED	BW	WW	YW
WAGR PATRIOT 1008J	10.9	1	91	137
WAGR MS INNOVATOR 9048G	CE Score	MCE	Milk	STAY
BUFORD BLUESTEM 9974	★	5.5	22	19.3
CFCC SUNCHASER 817F	CW	Marb.	RE	Fat
CFCC SUNCHASER 612D	39	.57	.84	-.022
CCA EMBLAZON 702				

Bigger outlined, long bodied and strong-topped individual that is really sound on the move. He is a powerhouse performer recording a 112 NR and 106 YR. His dam is elite in her fertility and production with 5 @ 104 NR and 4 @ 108 YR on a 362 day calving interval. Grandam has been flushed in the past. Very solid deal here.

121

CFCC MAGISTRATE 426M

ASA 4487500 | 50% SIM, 50% ANGUS | BD 8/28/24
HOM. BLACK | HOM. POLLED

HOOK'S EAGLE 6E	CED	BW	WW	YW
WAGR PATRIOT 1008J	14.7	-2	84	133
WAGR MS INNOVATOR 9048G	CE Score	MCE	Milk	STAY
K C F BENNETT ABSOLUTE	2★	7.4	22	14.9
REVOLUTION ROSE 711E	CW	Marb.	RE	Fat
NCC REVOLUTION ROSE 518	48	.48	.98	-.013
O C C GENERAL 794G				

I really appreciate this bull for the amount of meat that he packs on a moderate frame in a proud and attractive package. Born at 83#, he went on to record a 107 NR and 104 YR. Top 25% CW, top 10% REA with above average marbling. He deserves all the marks.

JGM Credible 510C

Age 11 | 47% Simmental 53% Angus

Credible served many years as a herd sire for our friends at Coats Ranch after they selected him from our sale. We were fortunate to collect semen on him and continue to utilize his genetics as a source of muscle and growth with the ability to improve quality and udder structure in his daughters. He has nicked well with our Tanker influenced cows and these sons are among the best we have to offer.

EPD	CED	BW	WW	YW	MCE	MILK	STAY	CW	MARB	RE	FAT
11.7	.1	88.4	135.8	6.2	18.3	10	54.9	.19	.8	-.033	
%Rank	50%	55%	20%	25%	65%	90%	90%	15%	85%	35%	50%



122

JGM MAN O WAR 468M

ASA 4478294 | 50% SIM, 50% ANGUS | BD 4/11/24
HOM. BLACK | HOM. POLLED | SC: 40 CM

HOOKS TRINITY 9T	CED	BW	WW	YW
JGM CREDIBLE 510C	14.2	-2	80	126
JGM IDEAL LADY 360A	CE Score	MCE	Milk	STAY
TNT TANKER U263	★	7	23	14.3
JGM MISS BONNIE TN 328A	CW	Marb.	RE	Fat
JGM MISS BONNIE OUIO	40	.09	.66	-.021
JGM UTMOST 8XS14				

The dam of lot 122 is the grandam of lot 123, and I bred both cows to Credible in a quest for a herdbull. You decide which one is better, 122 made ratios of 96 BW, 113 WW (682 lb), and 109 YW ratio. The OUIO cow we are trying to bring back to the front, her influence is worth a lot, this grandson has been a standout all along.

124

JGM MEANINGFUL 425M

ASA 4478275 | 50% SIM, 50% ANGUS | BD 4/9/24
HOM. BLACK | HOM. POLLED | SC: 41.5 CM

HOOKS TRINITY 9T	CED	BW	WW	YW
JGM CREDIBLE 510C	10.6	-.7	80	122
JGM IDEAL LADY 360A	CE Score	MCE	Milk	STAY
JGM EMPERICAL 762E	★	7.4	23	13.1
JGM PATTY 9142G	CW	Marb.	RE	Fat
JGM PATTY IOIY	40	.22	.78	-.037
OCC JETFECK 133N				

Star faced bull that is shapely and fancy - big muscled look in this sire group. His dam is flawless in type and performance, he jumped through all the hoops with his ratios running the right directions. To top it off, we are flushing his 15 year old grandam to intensify her influence.

123

JGM METHODS 4098M

ASA 4478391 | 50% SIM, 50% ANGUS | BD 4/20/24
HOM. BLACK | HOM. POLLED | SC: 39 CM

HOOKS TRINITY 9T	CED	BW	WW	YW
JGM CREDIBLE 510C	17.1	-3.5	74	114
JGM IDEAL LADY 360A	CE Score	MCE	Milk	STAY
CCR SPARTAN 9124A	★	7.6	17	17.5
JGM MISS BONNIE 877F	CW	Marb.	RE	Fat
JGM MISS BONNIE TN 328A	22	.43	.49	.010
ANGUS				

The other choice in this pair is an upheaded baldy that is powerful from every angle with a ton of weight relative to frame. We realize his numbers say heifer bull but we think he is just too stout and square for that to work well. Once this one is mature you're not gonna load him through the slide gate on a trailer.

125

JGM MINDSET 4015M

ASA 4478333 | 50% SIM, 50% ANGUS | BD 4/13/24
HOM. BLACK | HOM. POLLED | SC: 38 CM

HOOKS TRINITY 9T	CED	BW	WW	YW
JGM CREDIBLE 510C	17.3	-4.1	71	102
JGM IDEAL LADY 360A	CE Score	MCE	Milk	STAY
CCR SPARTAN 9124A	4★	9.1	16	15.9
JGM MISS BONNIE 950G	CW	Marb.	RE	Fat
JGM MISS BONNIE TN 328A	34	.28	.48	.002
TNT TANKER U263				

Potential calving ease bull out of Gail's favorite cow, he goes right back to the dam of lot 122, same cow family as lots 123 and 132. This white nosed bull has an ear down due to his advanced libido but it does not detract from his striking look and obvious quality. Produced ratios of 94 BW, 102 WW, and 99 YW.



CCR STOCKMAN 8033E

Age 9 | 63% Sim, 37% Angus

Stockman has a lot of progeny data in the ASA database that place him in the top 15% for YW, ADG, Docility, and Stayability - and this describes his progeny well. A true performance sire whose easygoing daughters are productive and long-lived. Stockman works well on higher percentage Angus cows, and if there is still some room in your herd for these genetics this trio of sons will not disappoint you for quality. **Semen Available.**

	CED	BW	WW	YW	MCE	MILK	STAY	CW	MARB	RE	FAT
EPD	7.2	4.4	88.3	142.5	6	27.8	19.9	36.2	.14	.81	-.025
%Rank	90%	99%	20%	15%	70%	20%	10%	55%	90%	50%	65%



126 JGM MASTERHAND 4067M

ASA 4478390 | 50% SIM, 50% ANGUS | BD 4/20/24
HOM. BLACK | HOM. POLLED | SC: 40.5 CM

CCR WIDE RANGE 9005A	CED	BW	WW	YW
CCR STOCKMAN 8033E	2.6	4.9	88	147
CCR MS 7322 BRILL 3370A	CE Score	MCE	Milk	STAY
SPRING COVE CROSSBOW	★	4.2	26	10.9
JGM IDEAL LADY 032F	CW	Marb.	RE	Fat
JGM IDEAL LADY 819F	54	.33	.93	-.007
HOOKS TRINITY 9T				

We still breed a few cows to Stockman, it is hard to beat these bulls for performance and customer satisfaction. Leading off the sire group is a fault free bull that is long as a well rope, his growth and ribeye numbers reveal his strength and give solid clues to his type. His dam is a big bodied and feminine Crossbow daughter.

127 JGM MERCHANT 4067M

ASA 4478536 | 37% SIM, 63% ANGUS | BD 4/17/24
HOM. BLACK | HOM. POLLED | SC: 39.5 CM

CCR WIDE RANGE 9005A	CED	BW	WW	YW
CCR STOCKMAN 8033E	.8	3.9	76	119
CCR MS 7322 BRILL 3370A	CE Score	MCE	Milk	STAY
H A POWER ALLIANCE 1025	★	1.1	26	17.5
9A3	CW	Marb.	RE	Fat
JGM IDEAL LADY 1F3	51	.39	.79	.003
EMULATION N BAR 5522				

A genuine power bull with a long, thick muscle pattern that remains loose made and athletic on the move. WW ratio of 107 and YW ratio of 109, backed by a wide based Power Alliance daughter. If you haven't had a Stockman yet, these are some of the last and you will like them.

128 JGM MADIGAN 4131M

ASA 4478548 | 37% SIM, 63% ANGUS | BD 4/30/24
HOM. BLACK | HOM. POLLED | SC: 42 CM

CCR WIDE RANGE 9005A	CED	BW	WW	YW
CCR STOCKMAN 8033E	3	3.1	70	112
CCR MS 7322 BRILL 3370A	CE Score	MCE	Milk	STAY
COLE CREEK FULL BORE 730	★	2.3	27	13.9
JGM ELBREA ERIKA 4C4	CW	Marb.	RE	Fat
JGM ELBREA ERIKA 8AS2	45	.17	.59	-.014
JGM SNIPE HUNT 620S				

Out of a 12 year old Full Bore dam that has been a model citizen, she is great uddered and durably built. This high density, jet black bull will look good every day.

129 JGM9 MIDAS TOUCH 4158M

ASA 4531573 | 37% SIM, 63% ANGUS | BD 5/3/24
HOM. BLACK | HOM. POLLED | SC: 39.5 CM

CCR STOCKMAN 8033E	CED	BW	WW	YW
JGM KATYBARTHEDOOR 2130K	14.1	-2	59	93
JGM MISS BONNIE OUIO	CE Score	MCE	Milk	STAY
JGM AMERICAN MUSCLE B438	★	8.1	21	17.6
G384	CW	Marb.	RE	Fat
JGM MS C245	19	.26	.24	.023
WOODHILL FORESIGHT				

A Stockman grandson by Katybarthedor, who we selected to continue the Stockman sire line here. Out of a moderate, bold sprung American muscle dam, this bull is massive through his rib and hip and will add mass and muscle to most cowherds.



JGM Katybarthedor 2130K, sire of lots 158-159. He was selected by Kevin and Rosemary Anderson from the front end of our 2023 sale and is now being used AI here. From one of our best cow families, we will keep using him. These two sons are the product of his use as a cleanup sire when he was a yearling.

130 JGM MINT CONDITION 4204M

ASA 4479697 | 56% SIM, 44% ANGUS | BD 5/14/24
RED GENE CARRIER | HOM. POLLED | SC: 40 CM

CCR STOCKMAN 8033E	CED	BW	WW	YW
JGM KATYBARTHEDOOR 2130K	2.6	1.7	80	126
JGM MISS BONNIE OUIO	CE Score	MCE	Milk	STAY
BROWN PREMIER	★	3.8	23	8.3
JGM MRS PREMIER 6209	CW	Marb.	RE	Fat
LLL RED SIMANGUS	34	.36	.99	-.035
LLL MS SIMANGUS				

Mint Condition is a little on the standoffish side, but is the spitting image of his sire in his build and type. He ratioed 107 WW and 104 YW and is geared for pounds but bears the maternal heritage of the PGD who we consider one of the best cows we have ever had.



CCR Stockman 8033E

131 JGM9 MEATEATER 4186M

ASA 4531558 | 37% SIM, 63% ANGUS | BD 5/9/24
HOM. BLACK | HOM. POLLED | SC: 39 CM

CCR STOCKMAN 8033E	CED	BW	WW	YW
JGM KETO 2086K	6.9	.9	72	111
JGM PROUD ERIKA 771E	CE Score	MCE	Milk	STAY
WOODHILL FORESIGHT	★	4.9	23	18.8
B197	CW	Marb.	RE	Fat
ANGUS	38	0	.41	-.008
ANGUS				

Our old Foresight cows keep showing up here, they continue to crank out these big, rugged bulls with tons of performance. A top 15% stayability sire with lots of potential for future growth.

132 JGM MATERNAL MERIT 4233M

ASA 4478572 | 25% SIM, 75% ANGUS | BD 5/27/24
HOM. BLACK | HOM. POLLED | SC: 36 CM

CCR STOCKMAN 8033E	CED	BW	WW	YW
JGM KETO 2086K	13.8	-1.7	60	95
JGM PROUD ERIKA 771E	CE Score	MCE	Milk	STAY
JGM UTMOST 8XS14	★	6.3	26	17.4
JGM MISS BONNIE OUIO	CW	Marb.	RE	Fat
JGM MISS BONNIE EMB 405P	12	.21	.35	.016
O C C EMBLAZON 854E				

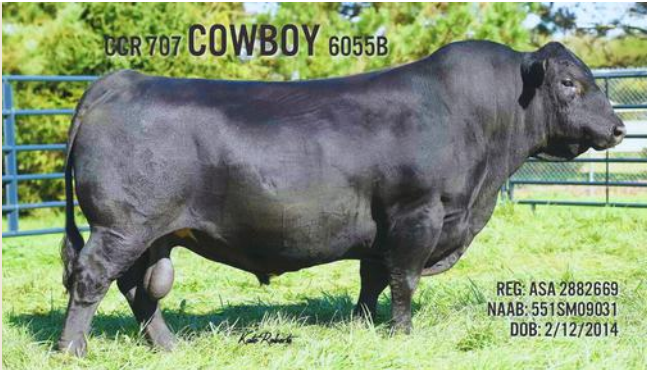
Combining two old pedigrees that stack up outstanding cows, he is named correctly and while he will outperform his numbers in terms of growth, his real legacy will be siring ideal replacements.

CCR 707 COWBOY 6055B

Age 12 | 50% Simmental, 50% Angus

A proven ST Genetics sire, Cowboy 6055B has achieved a combination of growth and maternal EPDs that are hard to match. Consistent in ability to sire cattle with performance and muscle shape, we think these sons will be the perfect answer for higher percentage Angus cows to add some punch while maintaining maternal excellence. These cattle are stout boned and will add some power most places.

	CED	BW	WW	YW	MCE	MILK	STAY	CW	MARB	RE	FAT
EPD	14	.6	83.1	134.7	9.5	24	24.2	43.2	.41	.56	-.031
%Rank	30%	65%	35%	25%	15%	50%	1%	35%	50%	75%	50%



133 JGM MAKERS MARK 4042M

ASA 4478352 | 50% SIM, 50% ANGUS | BD 4/15/24
HOM. BLACK | HOM. POLLED | SC: 42 CM

CCR COWBOY CUT 5048Z	CED	BW	WW	YW
CCR 707 COWBOY 6055B	12.2	1	85	135
S D S PRINCESS 707T	CE Score	MCE	Milk	STAY
ROUSEY EMOJI 8183F	★	8	25	16.7
JGM FLORA 0128H	CW	Marb.	RE	Fat
JGM FLORA SP 625D	49	.52	.88	-.067
CCR SPARTAN 9124A				

Makers Mark is a 3/4 brother to Macallan, we cleaned up cows with this pair of bulls last summer. Out of a gorgeous Emoji cow, he offers a new set of genetics for our customer base. He is a cowmans kind of bull with a lot of masculinity and volume and a no holes EPD profile.

3/4 Brothers



Lot 135 - 137 are 3/4 Brothers

134 JGM MACALLAN 4043M

ASA 4478353 | 50% SIM, 50% ANGUS | BD 4/15/24
HOM. BLACK | HOM. POLLED | SC: 42 CM

CCR COWBOY CUT 5048Z	CED	BW	WW	YW
CCR 707 COWBOY 6055B	14.3	-.6	78	131
S D S PRINCESS 707T	CE Score	MCE	Milk	STAY
ROUSEY EMOJI 8183F	★	9.4	27	17.4
JGM PIONEER GIRL 0132H	CW	Marb.	RE	Fat
JGM PIONEER GIRL LL 647D	38	.37	.71	-.040
REMINGTON LOCK N LOAD54U				

Ranking in the top 35% for 9 traits in the ASA database, with individual ratios of 96 BW, 109 WW, and 113 YW Macallan is impressive on paper. In person he is equally impressive, his feet land square under the corners of his skeleton and he is built with a lot of width and dimension from there up.

135 JGM MARTELL 4022M

ASA 4478336 | 41% SIM, 59% ANGUS | BD 4/14/24
HOM. BLACK | HOM. POLLED | SC: 43 CM

CCR COWBOY CUT 5048Z	CED	BW	WW	YW
CCR 707 COWBOY 6055B	8.9	2.1	86	136
S D S PRINCESS 707T	CE Score	MCE	Milk	STAY
JGM DIFFERENTIAL 628D	★	7.4	23	23
JGM PIONEER GIRL 028H	CW	Marb.	RE	Fat
JGM PIONEER GIRL 701E	53	.28	.74	-.040
SITZ DASH 10277				

Lots 135-137 are 3/4 brothers and Martell's dam is the same cow family as lot 134. Weaned at 661 lb with no creep or ration, he is top 1% Stayability and top 15% CW EPDs. Big and rugged made he will be handy to have around.



136

JGM MIDLETON 4035M

ASA 4478348 | 44% SIM, 56% ANGUS | BD 4/14/24
HOM. BLACK | HORN GENE CARRIER | SC: 40 CM

CCR COWBOY CUT 5048Z	CED	BW	WW	YW
CCR 707 COWBOY 6055B	15.6	-1.1	73	115
S D S PRINCESS 707T	CE	MCE	Milk	STAY
JGM DIFFERENTIAL 628D	Score			
JGM MIRAGE BALDY 8139F	★	8.6	22	19.2
1056	CW	Marb.	RE	Fat
TF MS ANGUS	44	.36	.33	-.010

A star faced tank of a bull out of a big volumed baldy cow, lot 136 is a lot of bull. The lowest BW of the Cowboy sons, he is a nice fit on young cows or for those of you that prefer lighter born calves from your cows - with enough growth punch to keep the paychecks coming.

137

JGM MCCONNELL 4051M

ASA 4478360 | 37% SIM, 63% ANGUS | BD 4/15/24
HOM. BLACK | HOM. POLLED | SC: 39.5

CCR COWBOY CUT 5048Z	CED	BW	WW	YW
CCR 707 COWBOY 6055B	7.8	2	67	116
S D S PRINCESS 707T	CE	MCE	Milk	STAY
JGM DIFFERENTIAL 628D	Score			
JGM EVERELDA MAID 8162F	★	5.9	22	19
JGM EVERELDA MAID OZ3	CW	Marb.	RE	Fat
GAR PREDESTINED	41	.44	.43	-.012

One of the later maturing Cowboys, he is bigger framed and longer than most with a lot of growing left in his future. These Cowboy bulls are going to make some big stout steer progeny, and the Stayability indicates their daughters should last a long time.

Lot 138 - 140 are 3/4 Brothers

138

JGM MACINTOSH 4080M

ASA 4478381 | 25% SIM, 75% ANGUS | BD 4/18/24
HOM. BLACK | HOM. POLLED | SC: 40.5 CM

CCR COWBOY CUT 5048Z	CED	BW	WW	YW
CCR 707 COWBOY 6055B	11.6	-.8	77	123
S D S PRINCESS 707T	CE	MCE	Milk	STAY
JGM FREE LUNCH 837F	Score			
JGM MIRAGE 174J	★	10	22	16.7
JGM MIRAGE 7152E	CW	Marb.	RE	Fat
RECC/JGM SUPERMAN 430	47	.41	.53	-.017

Curly headed herd bull looking Cowboy son with a muscular shape to his top and quarter. Strong numbers for Stayability, finished weight, and docility. Out of a fertile Free Lunch daughter that just keeps getting better.

139

JGM MCKENZIE 4088M

ASA 4478384 | 50% SIM, 50% ANGUS | BD 4/19/24
HOM. BLACK | HOM. POLLED | SC: 39.5 CM

CCR COWBOY CUT 5048Z	CED	BW	WW	YW
CCR 707 COWBOY 6055B	4.1	3	86	136
S D S PRINCESS 707T	CE	MCE	Milk	STAY
JGM FREE LUNCH 837F	Score			
JGM EVERELDA MAID 1303J	★	3.7	24	17.6
JGM EVERELDA MAID 867F	CW	Marb.	RE	Fat
TNT TANKER U263	58	.30	.95	-.057

Top 25% for WW, YW, Stayability, Docility and top 10% for CW and 15% for REA. Looks just like the other 15 in this sire group - they are poundmakers with more frame and bone.

140

JGM MACNAIR 4056M

ASA 4478364 | 50% SIM, 50% ANGUS | BD 4/16/24
RED GENE CARRIER | HOM. POLLED | SC: 37.5 CM

CCR COWBOY CUT 5048Z	CED	BW	WW	YW
CCR 707 COWBOY 6055B	12.7	.7	79	136
S D S PRINCESS 707T	CE	MCE	Milk	STAY
JGM FREE LUNCH 837F	Score			
JGM MIRAGE I122J	★	8.8	22	17.1
JGM MIRAGE 858F	CW	Marb.	RE	Fat
TNT TANKER U263	55	.42	.54	-.006

This guy got penned in the wrong group, should be with his brothers, he is just like the rest. EPDs place them all as high ranking in the breed for ADG, \$Gain index and the ability to generate a lot of payweight.

141

JGM MEDLEY 493M

ASA 4478318 | 50% SIM, 50% ANGUS | BD 4/12/24
HOM. BLACK | HOM. POLLED | SC: 40 CM

CCR COWBOY CUT 5048Z	CED	BW	WW	YW
CCR 707 COWBOY 6055B	8.3	1.7	77	117
S D S PRINCESS 707T	CE	MCE	Milk	STAY
JGM EMERY 767E	Score			
JGM GABI 9154G	★	4.7	23	17.7
JGM 423B	CW	Marb.	RE	Fat
OCC JETFECK 133N	38	.28	.43	-.019

Another of Kaitlin's bulls, she likes them with some chrome. Medley is a goggle eyed bull that is gentle, big barreled and thick ended. He weaned at 654 lb and will fill a full size chute side to side when he is mature. Dam is the right size with phenomenal fleshing ability.



Lot 141: A maternal brother to the good baldy bull Tanner Burge bought a couple years ago - Thanks Tanner.

3/4 Brothers

142

JGM MCHENRY 4064M

ASA 4478370 | 50% SIM, 50% ANGUS | BD 4/16/24
HOM. BLACK | POLLED | SC: 39.5 CM

CCR COWBOY CUT 5048Z	CED	BW	WW	YW
CCR 707 COWBOY 6055B	10.1	1.2	74	115
S D S PRINCESS 707T	CE	MCE	Milk	STAY
JGM EMERY 767E	Score			
JGM PIONEER GIRL 9156G	★	7.7	26	22.5
JGM PIONEER GIRL TN 435B	CW	Marb.	RE	Fat
TNT TANKER U263	38	.31	.47	-.028

Impressive from any angle, this star faced bull has a lot to him. His dam is an Emery daughter and is no doubt responsible for his extra stoutness. He ranks top 2% for stayability and should sire stout steers and daughters that become valuable replacements.



CCR Cowboy 6055B

143 JGM MOSSBURN 4057M

ASA 4478365 | 53% SIM, 47% ANGUS | BD 4/16/24
HOM. BLACK | HOM. POLLED | SC: 39.5 CM

CCR COWBOY CUT 5048Z	CED	BW	WW	YW
CCR 707 COWBOY 6055B	8.3	2.6	85	134
S D S PRINCESS 707T	CE Score	MCE	Milk	STAY
TUEL WINCHESTER A303	★	6.6	22	14.1
JGM MIRAGE 1133J	CW	Marb.	RE	Fat
JGM MIRAGE 7151E	49	.37	.68	-0.36
RECC/JGM SUPERMAN 430				

Mossburn is out of a really productive Winchester dam that weaned him at a 108 ratio, after weaning he cruised to a 113 YW ratio and he carries his weight in the right places. Nicely balanced with plenty of shape and base width.

144 JGM MORTLACH 4063N

ASA 4478369 | 37% SIM, 63% ANGUS | BD 4/16/24
HOM. BLACK | HOM. POLLED | SC: 38 CM

CCR COWBOY CUT 5048Z	CED	BW	WW	YW
CCR 707 COWBOY 6055B	15.1	-.4	71	104
S D S PRINCESS 707T	CE Score	MCE	Milk	STAY
JGM BEEFCAKE 428B	★	11	26	20
JGM PROUD ERIKA 771E	CW	Marb.	RE	Fat
JGM PROUD ERIKA 1H1	30	.38	.46	-.016
HA IMAGE MAKER 0415				

Showing more of his Simmental heritage, this one is rugged boned, late maturing, and built to keep growing. Has Tanker and Image Maker on the bottom side, so the growth is no accident.



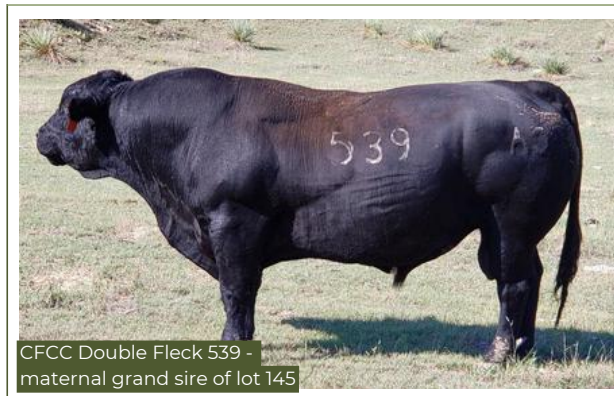
JGM Proud Erika 1H1 - MGD of lot 144

145 CFCC MO BETTER 455M

ASA 4487528 | 50% SIM, 50% ANGUS | BD 9/4/24
HOM. BLACK | HOM. POLLED

CCR COWBOY CUT 5048Z	CED	BW	WW	YW
CCR 707 COWBOY 6055B	4.8	4.8	93	145
S D S PRINCESS 707T	CE Score	MCE	Milk	STAY
CFCC DOUBLE FLECK 539	★	2.2	27	21.3
CFCC DIXIE ERICA 809F	CW	Marb.	RE	Fat
CFCC DIXIE ERICA 413B	54	.29	1.07	-.062
3C PASQUE Y1752 B				

Mo Better records a 112 NR & 113 YR and his EPD's rank him in the top 15% for YW, CW & REA. But what I value the most in this long, shapely and masculine bull is his mother. She is a 1250# cow with a feminine design and nearly perfect udder. She records 5 calves @ 103 NR, 102 YR with a 361 day calving interval. Top 4% STAY.



CFCC Double Fleck 539 - maternal grand sire of lot 145

146 CFCC MACHINIST 468M

ASA 4487541 | 50% SIM, 50% ANGUS | BD 9/12/24
HOM. BLACK | HOM. POLLED

CCR COWBOY CUT 5048Z	CED	BW	WW	YW
CCR 707 COWBOY 6055B	5.4	3.7	86	139
S D S PRINCESS 707T	CE Score	MCE	Milk	STAY
3C PASQUE Y1752 B	★	6	27	19.4
425 C F C BLACKBIRD 1XU7	CW	Marb.	RE	Fat
C F C GENESIS 8X1	51	.25	.61	-.044

Another top performer with a 121 NR & 113 YR and top 20% rank for YW, ADG & CW. His dam is still working at 11 and records 9@105 NR & 8@104 YR on a 365 day interval. Top 10% STAY. We strive to provide genetics that will produce both high value steers and productive fertile cows. He is all that in a rugged and gentle package.



C F C Blackbird 1XU7 - Maternal Granddam of lot 146 - Pictured at 9

147 CFCC MANGLER 448M

ASA 4487522 | 50% SIM, 50% ANGUS | BD 9/3/24
HOM. BLACK | HOM. POLLED

CCR COWBOY CUT 5048Z	CED	BW	WW	YW
CCR 707 COWBOY 6055B	14.3	.1	68	114
S D S PRINCESS 707T	CE Score	MCE	Milk	STAY
JGM DIFFERENTIAL 628D	2★	9.4	26	23.9
CFCC LADY 003H	CW	Marb.	RE	Fat
CFCC LADY 3PU5	20	.36	.19	-.014
TRIPLE C SINGLETARY S3H				

Well balanced in his design and attractive, Mangler offers more calving ease in this sire group and started life at 77#. His dam is a daughter of our 3PU5 donor cow and records 3@108 NR & 3@107 YR on a 364 day interval. Note his top 1% STAY rank. A double grandson of Triple C Singletary, use him to make top shelf replacements.

Lot 147 & 148 are 3/4th Brothers



CCR Cowboy 6055B

148 CFCC MULESKINNER 457M

ASA 4487530 | 38% SIM, 62% ANGUS | BD 9/4/24
HOM. BLACK | HOM. POLLED

CCR COWBOY CUT 5048Z	CED	BW	WW	YW
CCR 707 COWBOY 6055B	14	-1.4	76	120
S D S PRINCESS 707T	CE Score	MCE	Milk	STAY
COLE CREEK BLACK CEDAR 1100	2★	8.2	31	20
CFCC LADY 5C6	CW	Marb.	RE	Fat
CFCC LADY 3PU5	22	.58	.27	-.003
TRIPLE C SINGLETARY SSH				

A bigger framed bull that offers top third CE yet good grow with a 106 NR & 110 YR. His 10yo dam is the oldest daughter of our 3PU5 donor and my favorite. A 1250# cow that records 7@95BR, 108NR & 105YR on a 364 day interval. Top 25% MARB and top 10% STAY. Use to create heavy high value steers and fertile heifers.



CFC Lady 5C6 - Dam of lot 148, pictured with her calf a few years back

150 JGM MR CLEAN 4194M

ASA 4478559 | 37% SIM, 63% ANGUS | BD 5/11/24
HOM. BLACK | HOM. POLLED | SC: 37.5 CM

SFG BACHELOR DEGREE B500	CED	BW	WW	YW
BCI MR. HO136	13.4	.5	71	120
STF CW70	CE Score	MCE	Milk	STAY
GDAR GAME DAY 449	★	5.6	26	15
JGM BLACKBIRD 5G4	CW	Marb.	RE	Fat
4G LADY ARBITRATOR 6136	38	.56	.43	-.007
HD DUNN CORNERSTONE 0245				

I've been waiting for this one, I really like this bull. He is a maternal brother to Family Time and sired by an outcross Simangus herd bull of ours. Mr. Clean is certainly tidy in all the right places, shaped like a meat animal, and athletic in motion. He is backed up by solid ratios and EPDs and the kind anyone can like.



Lot 150 posing on tag day

149 JGM MR RIGHT 4146M

ASA 4478417 | 50% SIM, 50% ANGUS | BD 5/2/24
HOM. BLACK | HOM. POLLED | SC: 38 CM

SFG BACHELOR DEGREE B500	CED	BW	WW	YW
BCI MR. HO136	1.7	2.3	81	140
STF CW70	CE Score	MCE	Milk	STAY
JGM ENSURE 758E	★	4.2	30	10.8
JGM MISS WIX 0179H	CW	Marb.	RE	Fat
JGM MISS WIX 5M14	54	.26	.52	-.030
CCA EMBLAZON 702				

Mr Right is a high performance beast out of an equally performance oriented cow with an outstanding progeny performance record. Robust and round muscled to look at, he is ready for heavy use and destined to put some power in a set of steers and some pretty in a set of heifers.



STF CW70 dam of BCI Mr. HO136

151 JGM MR MISTER 4156M

ASA 4478423 | 47% SIM, 53% ANGUS | BD 5/3/24
HOM. BLACK | HOM. POLLED | SC: 38 CM

SFG BACHELOR DEGREE B500	CED	BW	WW	YW
BCI MR. HO136	15.2	-2.1	58	91
STF CW70	CE Score	MCE	Milk	STAY
SITZ DASH 10277	2★	8.4	25	18.8
JGM PIONEER GIRL 701E	CW	Marb.	RE	Fat
JGM PIONEER GIRL 523C	45	.34	.89	-.037
ROUSEY COUNTRY WIDE 138Y				

Generations of low BW on the dam side lend to this one working on heifers if needed. Despite that he is solid and dense and competes well in a power bull pen. He's the kind that could go both ways - heifers and cows.



BC Mr HO136, sire of lots 149-151



Rousey Vanguard 1037J

Rousey Vanguard 1037J

Age 5 | 63% Simmental, 37% Angus

Vanguard was selected from the Rousey Simangus sale for some outcross calving ease genetics with a solid maternal base. His dam has proven herself for fertility, udder quality, and production. Ranking in the top 1% for BW and calving ease, these bulls will calve extremely easy on a set of heifers and leave you calves with muscle and shape. Pictured is CLRS Guardian, sire of Vanguard.



	CED	BW	WW	YW	MCE	MILK	STAY	CW	MARB	RE	FAT
EPD	23.2	-7.3	70.6	101.7	11.3	26.3	19.2	24.1	.42	.58	.016
%Rank	1%	1%	75%	85%	3%	30%	15%	90%	50%	70%	95%

152 JGM MOTION 4M

ASA 4479655 | 37% SIM, 63% ANGUS | BD 3/21/24
HOM. BLACK | HOM. POLLED | SC: 38.5 CM

	CED	BW	WW	YW
CLRS GUARDIAN 317G	13.5	-2.8	74	113
ROUSEY VANGUARD 1037J				
ROUSEY PRINCESS 62D				
GDAR GAME DAY 449				
	CE Score	MCE	Milk	STAY
JGM EVERELDA MAID 2G15	3★	8.4	28	12.8
E&B EVERELDA MAID 123				
SITZ TRAVELER 9929				
	CW	Marb.	RE	Fat
	44	.44	.87	.016

Switching gears into some sure shot heifer bulls with fresh genetics for our clientele. You're going to like these Vanguard bulls, starting with Motion who weighed 69 lb at birth, earned an adjusted WW of 650 lb and is a big bull in the pen that will be easy to find.

155 JGM MAKIN HAY 432M

ASA 4478268 | 50% SIM, 50% ANGUS | BD 4/9/24
HOM. BLACK | HOM. POLLED | SC: 40.5 CM

	CED	BW	WW	YW
CLRS GUARDIAN 317G	18.1	-5	78	122
ROUSEY VANGUARD 1037J				
ROUSEY PRINCESS 62D				
CLRS HOMELAND 327H				
	CE Score	MCE	Milk	STAY
JGM MISS EMULOUS 262K	4★	7.6	22	19.8
8P6F				
RECC HAYSAVER 109				
	CW	Marb.	RE	Fat
	40	.55	.55	-.009

Calving ease, stayability, and marbling are the highlights in his EPD package. Complete and solidly built bull out of a strong Homeland cow - we liked him well enough to clean up heifers with him last summer.

153 JGM MERCHANT 45M

ASA 4478237 | 50% SIM, 50% ANGUS | BD 4/4/24
HOM. BLACK | HOM. POLLED | SC: 37.5 CM

	CED	BW	WW	YW
CLRS GUARDIAN 317G	21.5	-5.2	72	108
ROUSEY VANGUARD 1037J				
ROUSEY PRINCESS 62D				
JGM FAMILY TIME 8E5				
	CE Score	MCE	Milk	STAY
JGM BLACKBIRD 2120K	4★	9	23	19.2
JGM BLACKBIRD 0108H				
SFG SUPER PUNCHER F820				
	CW	Marb.	RE	Fat
	32	.45	.36	.041

Multigeneration heifer bull with a 68 lb BW and a cool white face. All the aerodynamics of a lawn dart but has matured with a huge crest and acts like he will be the boss in a group of breeding bulls.

156 JGM9 MINDFUL 454M

ASA 4531554 | 50% SIM, 50% ANGUS | BD 4/10/24
HOM. BLACK | HOM. POLLED | SC: 37 CM

	CED	BW	WW	YW
CLRS GUARDIAN 317G	19	-4.4	69	108
ROUSEY VANGUARD 1037J				
ROUSEY PRINCESS 62D				
BCI MR. H0136				
	CE Score	MCE	Milk	STAY
JGM9 MISS PERKINS 205K	4★	10.8	26	11.6
G378				
ANGUS				
	CW	Marb.	RE	Fat
	37	.40	.48	.002

Mindful is a brockle faced bull that we cleaned up some heifers with last summer, he is wide through the floor of his chest but as smooth shouldered as he can be. Good looking and easy to spot.

3/4 Brothers

Lot 157 & 158 are 3/4th Brothers

154 JGM MILLION 459M

ASA 4478285 | 47% SIM, 53% ANGUS | BD 4/10/24
HOM. BLACK | HOM. POLLED | SC: 38.5 CM

	CED	BW	WW	YW
CLRS GUARDIAN 317G	20.2	-5.5	70	109
ROUSEY VANGUARD 1037J				
ROUSEY PRINCESS 62D				
JGM FAMILY TIME 8E5				
	CE Score	MCE	Milk	STAY
JGM LOLITA 227K	4★	6.4	24	15
JGM LOLITA 094H				
JGM CREDIBLE 510C				
	CW	Marb.	RE	Fat
	26	.26	.47	.032

Million has calving ease credentials that are elite and was born as a 66 lb first calf out of a heifer who has since done a nice job with her second calf. Square made and muscular in a moderate framework, he is a chunk.

157 JGM MATTERS 46M

ASA 4478239 | 50% SIM, 50% ANGUS | BD 4/4/24
HOM. BLACK | HOM. POLLED | SC: 38 CM

	CED	BW	WW	YW
CLRS GUARDIAN 317G	20.5	-5.1	66	99
ROUSEY VANGUARD 1037J				
ROUSEY PRINCESS 62D				
JGM DIFFERENTIAL 628D				
	CE Score	MCE	Milk	STAY
JGM MISS BONNIE 24K	4★	9.1	25	20.2
JGM MISS BONNIE 9129G				
DEPUTY				
	CW	Marb.	RE	Fat
	32	.40	.40	.020

The final in a 6-pack of Vanguard heifer bulls, 46 shares the meaty shape and calving ease features of his brothers. Expect these brothers to be true calving ease but not extremely short gestation, we think the right recipe for range calving heifers without doctoring BRD all summer.



Rousey Vanguard 1037J

158 JGM MIDWEST 4071M

ASA 4478374 | 50% SIM, 50% ANGUS | BD 4/17/24
HOM. BLACK | HOM. POLLED | SC: 35 CM

CLRS GUARDIAN 317G	CED	BW	WW	YW
ROUSEY VANGUARD 1037J	12.6	-.4	77	120
ROUSEY PRINCESS 62D	CE Score	MCE	Milk	STAY
JGM DIFFERENTIAL 628D	★	7.2	23	11.3
JGM IDEAL LADY 2024K	CW	Marb.	RE	Fat
JGM IDEAL LADY 5Q2	41	.34	.83	.003
SINCLAIR OPEN RANGE 2Q23				

Midwest is the first of 3 Vanguards that made the cut for growth bulls, he is stout on the cow side of his pedigree and proved it with a 108 WW ratio and 104 YW ratio. He is a bit more standoffish but never been a problem. One look and you can tell he belongs in the power bulls.

161 JGM METTLE 485M

ASA 4478310 | 50% SIM, 50% ANGUS | BD 4/12/24
HOM. BLACK | HOM. POLLED | SC: 36.5 CM

DS MR 308E 40G	CED	BW	WW	YW
JGM JAWS 187J	9.3	.4	72	121
JGM MISS MIRAGE 839F	CE Score	MCE	Milk	STAY
JGM DIFFERENTIAL 628D	★	7.7	23.4	15.2
JGM FLORA 230K	CW	Marb.	RE	Fat
JGM FLORA 886F	50.7	.02	.59	-.02
JGM CREDIBLE 510C				

Mettle is double bred to Tanker through the cows on both sides of his pedigree. Ratios of 96 BW, 106 WW, and 101 YW back up his solid EPD profile. Like his sire who pulled natural service duty here for 3 years, he is practical but not flashy, the kind that stand the test of time.

159 JGM MOVE FREE 457M

ASA 4478284 | 50% SIM, 50% ANGUS | BD 4/10/24
HOM. BLACK | HOM. POLLED | SC: 38.5 CM

CLRS GUARDIAN 317G	CED	BW	WW	YW
ROUSEY VANGUARD 1037J	8.7	.6	90	137
ROUSEY PRINCESS 62D	CE Score	MCE	Milk	STAY
JGM DOUBLE XL 644D	★	7.6	27	14.2
JGM ELBREA ERIKA 2020K	CW	Marb.	RE	Fat
JGM ELBREA ERIKA 3Q14	44	.34	.82	-.035
SINCLAIR OPEN RANGE 2Q23				

Top shelf growth with a 650 lb adj WW and an abundance of body and muscle. His dam is a stout made Double XL daughter, thus a Tanker granddaughter.

162 JGM9 MIGHT 419M

ASA 4531548 | 44% SIM, 56% ANGUS | BD 4/8/24
RED GENE CARRIER | HOM. POLLED | SC: 38 SC

HOOKS TRINITY 9T	CED	BW	WW	YW
JGM ETHOSES 705E	11.5	0	75	117
JGM MISS BONNIE 507C	CE Score	MCE	Milk	STAY
JGM DIFFERENTIAL 628D	★	7.2	19	14.9
JGM9 MISS PERKINS 2252K	CW	Marb.	RE	Fat
B199	39	.32	.44	-.020
WOODHILL FORESIGHT				

Stacked with sires that have made and impact for our herd, Might should have some friends come sale day. If you're a sucker for big butts you should mark this one now.



JGM Double XL 644D - MGS of lot 159

163 JGM MASTERFUL 4197M

ASA 4478443 | 50% SIM, 50% ANGUS | BD 5/11/24
RED GENE CARRIER | HOM. POLLED | SC: 37 SC

CIRCLE ALUMNI F760	CED	BW	WW	YW
CIRCLE ALUMNI H22	5.3	1.9	76	128
CIRCLE ALUMNI F52	CE Score	MCE	Milk	STAY
SFG SUPER PUNCHER F820	★	5.6	22	14.7
1139J	CW	Marb.	RE	Fat
JGM MISS BONNIE 6C28	57	.48	.60	-.018
JGM BOARD APPROVED 4C14				

Alumni F52 was a valued natural service sire here with a high percentage of his daughters ending up in the replacement pen. Masterful comes from a cow family that transmits plenty of quality and he is no exception, should sire outstanding females.

160 JGM MADE RIGHT 433M

ASA 4478261 | 50% SIM, 50% ANGUS | BD 4/9/24
HOM. BLACK | HOM. POLLED | SC: 40.5 CM

CLRS GUARDIAN 317G	CED	BW	WW	YW
ROUSEY VANGUARD 1037J	12.7	-1.6	80	122
ROUSEY PRINCESS 62D	CE Score	MCE	Milk	STAY
JGM NCC GRACE N POWER 93G	★	7.6	27	16.6
JGM JUANADA PRIDE 2017K	CW	Marb.	RE	Fat
9T2	54	.40	.87	-.027
HAYNES OUTRIGHT 452				

Made Right is an eye-ful from behind, axehandle wide at his pins and big through his stifle. Has a balanced and powerful set of numbers that project him to sire heavy feeders.



Circle Alumni F760 - MGS of lots 163-164



Stockmen's Source Beef Bulls

164 JGM MASTERCLASS 4209M

ASA 4478562 | 25% SIM, 75% ANGUS | BD 5/17/24
HOM. BLACK | HOM. POLLED | SC: 40 CM

CIRCLE ALUMNI F760	CED	BW	WW	YW
CIRCLE ALUMNI H22	9.7	.8	85	146
CIRCLE ALUMNI F52	CE Score	MCE	Milk	STAY
JGM FAMILY TIME 8E5	★	3.8	25	16.6
JGM MISS BURGESS IE2	CW	Marb.	RE	Fat
JGM MISS BURGESS INIO	59	.33	.61	.010
O C C MAGNITUDE 805M				

We always think of Alumni as a female sire, but when paired with the power of this cow, the growth and muscle come through in spades - check out his growth and carcass numbers. Phenotypically the prototype composite bull.



JGM Everelda Maid 8P10 - flush sister to the dam of lot 165, she is also the dam of lot 3 in this sale.

165 JGM MONEYSAVER 4182M

ASA 4478557 | 37% SIM, 63% ANGUS | BD 5/9/24
HOM. BLACK | HOM. POLLED | SC: 39.5 CM

REDHILL 672X X004 231A	CED	BW	WW	YW
CHUN KRUGERRAND K2157	10.7	1	76	122
CHUN SANDY F8355	CE Score	MCE	Milk	STAY
RECC HAYSAVER 109	★	6.4	23	14.3
8P6F	CW	Marb.	RE	Fat
JGM MISS EMULOUS 5Z2	44	.33	.81	.001
HD DUNN HIGH MOUNTAIN 2222				

K2157 is a 231A son Travis selected from the Chundy sale and he cleaned up cows here one summer. Money Saver weaned at 621 lb and is out of a great Haysaver dam from a cow family with extreme longevity.

166 JGM MINT 4130M

ASA 4478408 | 50% SIM, 50% ANGUS | BD 4/29/24
HOM. BLACK | HOM. POLLED | SC: 38 CM

REDHILL 672X X004 231A	CED	BW	WW	YW
CHUN KRUGERRAND K2157	21.2	-4.4	67	106
CHUN SANDY F8355	CE Score	MCE	Milk	STAY
JBOB CHINOOK 603	3★	11	29	14.2
JGM MISS WIX 901G	CW	Marb.	RE	Fat
JGM MISS WIX 712E	49	.15	1.11	-.006
ROUSEY COUNTRY WIDE I38Y				

Calving ease and high REA from the same low BW cow family that produced Free Lunch, Mint has that calving ease look with a smooth outline and a correct topline.

JGM Family Time 8E5 Age 8 | Angus

JGM Family Time 8E5 is featured as a sire in the Angus division also, and he works equally well or better on our Simangus cows. Within the ASA database Family Time charts an elite set of data, ranking in the top 25% or better for 7 traits and All Purpose Index. He has been utilized heavy here because of his ability to sire easily born progeny that grow with the best. His daughters have brilliant udder quality and his sons are gentle and big-nuttied. His influence will be felt here for years to come. **Semen available.**

	CED	BW	WW	YW	CEM	MILK	SEN	CW	MARB	RE	FAT
EPD	14	-.7	64	107	12.6	21	-2	43	.63	.25	.035
%Rank	4%	15%	60%	70%	30%	80%	20%	70%	50%	90%	70%



167 JGM MOONLIGHT 4117M

ASA 4478402 | 25% SIM, 75% ANGUS | BD 4/26/24
HOM. BLACK | HOM. POLLED | SC: 39 CM

CAR EFFICIENT 534	CED	BW	WW	YW
JGM FAMILY TIME 8E5	8.4	.1	77.1	123
JGM BLACKBIRD 5G4	CE Score	MCE	Milk	STAY
TNT TANKER U263	★	2.7	17	13.1
JGM EVERELDA MAID 867F	CW	Marb.	RE	Fat
JGM EVERELDA MAID IAU1	47	.30	.49	.002
JGM ULTIMATE 8A2				

In these Angus sired composites, we purposely combined Family Time with our Tanker cows because they complement each other well. Solid numbered, long, and heavy on the scale this big-nuttied bull is easy to like.

168 JGM MY TIME 4147M

ASA 4478418 | 25% SIM, 75% ANGUS | BD 5/2/24
HOM. BLACK | HOM. POLLED | SC: 41 CM

CAR EFFICIENT 534	CED	BW	WW	YW
JGM FAMILY TIME 8E5	9.6	1.7	78	133
JGM BLACKBIRD 5G4	CE Score	MCE	Milk	STAY
TNT TANKER U263	★	3.1	16.4	14.5
JGM BLACK QUEEN 052H	CW	Marb.	RE	Fat
JGM BLACK QUEEN 6D5	54	.47	.42	.053
SITZ DASH 10277				

My Time is a 3/4 brother to lot 167 and the pair fit each other well, they will generate quality pounds in both sexes of their progeny. Should improve udder quality in their daughters.

3/4th Brothers



JGM Family Time 8E5

169 MILE A MINUTE 4173M

ASA 4478433 | 12% SIM, 88% ANGUS | BD 5/7/24
HOM. BLACK | HOM. POLLED | SC: 40.5 CM

CAR EFFICIENT 534	CED	BW	WW	YW
JGM FAMILY TIME 8E5	8.2	1.7	74	119
JGM BLACKBIRD 5G4	CE Score	MCE	Milk	STAY
RECC/JGM SUPERMAN 430	★	1.8	19.3	16
JGM ELBREA ERIKA 8175F	CW	Marb.	RE	Fat
JGM ELBREA ERIKA 5C11	47	.66	.34	.068
COLE CREEK FULL BORE 730				

Mile a Minute is a high percentage Angus but the boxcar shape he is built with reveals his Simmental heritage. He posted WW ratio 108 and YW ratio 105 and offers high marbling potential.

171 JGM MOJO 471M

ASA 4478297 | 25% SIM, 75% ANGUS | BD 4/11/24
HOM. BLACK | HOM. POLLED | SC: 36.5 CM

CAR EFFICIENT 534	CED	BW	WW	YW
JGM FAMILY TIME 8E5	16.2	-1.2	76	120
JGM BLACKBIRD 5G4	CE Score	MCE	Milk	STAY
HOOKS TRINITY 9T	3★	6.4	16.4	31
JGM MISS BONNIE 825F	CW	Marb.	RE	Fat
JGM MISS BONNIE 676D	31	.69	.46	.023
JGM MS SIMANGUS				

Mojo is out of an extremely good cow, and earned great ratios. His EPDs rank him in the top 15% for marbling and he should generate some Quality grade premiums in the future. Beefy and well made.

170 JGM MILESTONE 4011M

ASA 4478329 | 19% SIM, 81% ANGUS | BD 4/13/24
HOM. BLACK | HOM. POLLED | SC: 39 CM

CAR EFFICIENT 534	CED	BW	WW	YW
JGM FAMILY TIME 8E5	15.5	-3.5	69	112
JGM BLACKBIRD 5G4	CE Score	MCE	Milk	STAY
JGM AMERICAN MUSCLE B438	3★	3.7	22.4	19
JGM MISS WIX 756E	CW	Marb.	RE	Fat
JGM MISS WIX JF 104Y	30	.58	.06	.020
OCC JETFECK 133N				

A calving ease Family Time son with enhanced marbling genetics and ratios of 94 BW, 105 WW, and 106 YW. Burly and wide constructed like his American Muscle dam.

172 JGM MISSION 4003M

ASA 4478321 | 25% SIM, 75% ANGUS | BD 4/13/24
HOM. BLACK | HOM. POLLED | SC: 39 CM

CAR EFFICIENT 534	CED	BW	WW	YW
JGM FAMILY TIME 8E5	19.3	-5	54	89
JGM BLACKBIRD 5G4	CE Score	MCE	Milk	STAY
JGM FREE LUNCH 837F	4★	6.7	16	20.3
JGM MIRAGE 2035K	CW	Marb.	RE	Fat
JGM MIRAGE 898F	29	.66	.36	.042
WINC LIVE AMMO 420B				

Mission comes with more of a calving ease resume most, along with strong carcass traits. Moderately framed, dense and built like a tank from the ground up.



Spring Cove Crossbow Age 12 | Angus

We have used Crossbow on hundreds of commercial heifers and quite a few registered heifers as well. We are using him again now that we have had time to evaluate his daughters - they fit our system very well. In the ASA database he ranks in the top 10% or better for 8 traits and indices. His genetics improve marbling and calving ease while his daughters are big-bodied cows that stay in shape well and raise quality calves.

	CED	BW	WW	YW	MCE	MILK	STAY	CW	MARB	RE	FAT
EPD	21.3	-3.6	72.3	130	10	24	12.6	38.3	1.19	.17	.026
%Rank	2%	10%	70%	35%	10%	50%	75%	50%	1%	99%	99%

173 JGM MOVIN ON 413M

ASA 4478253 | 25% SIM, 75% ANGUS | BD 4/8/24
RED GENE CARRIER | HOM. POLLED | SC: 40 CM

KM BROKEN BOW 002	CED	BW	WW	YW
SPRING COVE CROSSBOW	15.8	-1.3	80	133
SPRING COVE PRETTY 205	CE Score	MCE	Milk	STAY
JGM CREDIBLE 510C	2★	5.3	21.8	11.8
JGM BLACK HELGA 269K	CW	Marb.	RE	Fat
MFI BLACK HELGA 9054	39.6	.57	.58	-.006
O C C TREMENDOUS 619T				

These Crossbow sons make great Simangus cattle, they number up well and look the part of a herd bull. Don't miss them late in the catalog, they will be a sale feature.

174 JGM MAKE HASTE 431M

ASA 4478270 | 28% SIM, 72% ANGUS | BD 4/9/24
HOM. BLACK | HOM. POLLED | SC: 40 CM

KM BROKEN BOW 002	CED	BW	WW	YW
SPRING COVE CROSSBOW	12.9	-8	82.3	142.2
SPRING COVE PRETTY 205	CE Score	MCE	Milk	STAY
TUEL WINCHESTER A303	★	6.8	21.9	7.7
JGM MIRAGE 298K	CW	Marb.	RE	Fat
JGM MIRAGE 7152E	49.8	.63	.21	-.001
RECC/JGM SUPERMAN 430				

Very similar to the previous bull in his balance, thickness and rib shape, they make a nice pair. Earned ratios of 106 WW and 111 YW and his EPDs place him in the best 35% of the breed for 7 EPDs and indexes.



Spring Cove Crossbow

Lot 175 - 177 are 3/4th Brothers

175 JGM MOVE OVER 409M

ASA 4478247 | 25% SIM, 75% ANGUS | BD 4/7/24
HOM. BLACK | HOM. POLLED | SC: 40 CM

	CED	BW	WW	YW
KM BROKEN BOW 002	14.5	-.9	86.9	144.8
SPRING COVE CROSSBOW				
SPRING COVE PRETTY 205	CE Score	MCE	Milk	STAY
CLRS HOMELAND 327H	2★	7.1	22.1	16.7
JGM LOLITA 2018K	CW	Marb.	RE	Fat
JGM LOLITA 917G	52.2	.85	.48	.008
C C A EMBLAZON 702				

Move Over cleaned up some of our heifers this summer, but he is not a sure shot heifer sire. He has tons of performance and carcass merit and some of the best numbers in the offering.

177 CFCC MILLER TIME 404M

ASA 4487478 | 38% SIM, 62% ANGUS | BD 8/20/24
HOM. BLACK | HOM. POLLED

	CED	BW	WW	YW
KM BROKEN BOW 002	15.1	-1	78.5	133.4
SPRING COVE CROSSBOW				
SPRING COVE PRETTY 205	CE Score	MCE	Milk	STAY
CLRS HOMELAND 327H	3★	7.7	20.9	15.4
CFCC BLACKBIRD 265K	CW	Marb.	RE	Fat
CFCC BLACKBIRD 867F	46.3	.73	.74	.009
CFCC WEIGHMAKER 638				

Moderate framed, thick-made calf that is attractive in his design and small-headed. He began at 70# and ranks in the top 20% of the population for CE. Solid performance, he recorded a 100 NR and 101 YR. Comes from a fertile and productive cow family that are stout made and easy fleshing. Top 15% ADG and MARB EPD's.

176 JGM MOVING ALONG 434M

ASA 4478267 | 25% SIM, 75% ANGUS | BD 4/9/24
HOM. BLACK | HOM. POLLED | SC: 40.5 CM

	CED	BW	WW	YW
KM BROKEN BOW 002	18.7	-3.7	68.7	109.6
SPRING COVE CROSSBOW				
SPRING COVE PRETTY 205	CE Score	MCE	Milk	STAY
CLRS HOMELAND 327H	4★	8.6	21.1	19.1
JGM MISS WIX 248K	CW	Marb.	RE	Fat
JGM MISS WIX 801F	28.5	.61	.12	-.008
SITZ DASH 10277				

Moving Along is a calving ease Crossbow son with great Stayability and Marbling numbers. Somehow lost the tip of his ear so he's easier to find. Long, correct, and ready for your bigger jobs.



Stockmen's Source Beef Bulls

178 JGM MADE TO ORDER 423M

ASA 4478274 | 25% SIM, 75% ANGUS | BD 4/9/24
HOM. BLACK | HOM. POLLED | SC: 41 CM

	CED	BW	WW	YW
GDAR GAME DAY 449	18.2	-3.8	70.8	104.1
JMC CORE VALUES 5G11	CE Score	MCE	Milk	STAY
JGM PROUD ERIKA 1H1	3★	10.7	31	18.9
TNT TANKER U263	CW	Marb.	RE	Fat
JGM PROUD ERIKA 897F	40.6	.43	.33	.005
JGM PROUD ERIKA 0U27				
JGM UTMOST 8XS14				

A 3/4 brother to the strong CV sire group in last year's sale, and looks just like them. Most of this mating were heifers this year, to our satisfaction. Read safe for heifers but grew well enough to work on a set of cows, he should sire outstanding females. His dam is a future donor cow for us.



JGM Core Values 5G11 - sire of lot 178



Square B True North - Sire of lots 179-180

179 CFCC MEGATRON 409M

ASA 4487483 | 25% SIM, 75% ANGUS | BD 8/25/24
HOM. BLACK | HOM. POLLED

	CED	BW	WW	YW
S A V RAINFALL 6847	16	-1.1	87.7	143.2
SQUARE B TRUE NORTH 8053	CE Score	MCE	Milk	STAY
ELBANNA OF CONANGA 1210	3★	8.1	31.4	12.1
JGM FREE LUNCH 837F	CW	Marb.	RE	Fat
CFCC BLACKCAP 244K	49.6	.64	.79	.017
CFCC BLACKCAP 911G				
REMINGTON LOCK N LOAD 54U				

A 3 dimensional herd bull prospect that is really deep-sided and wide-chested. Numerically he ranks well across the board with top 15% CE, YW, & ADG, top 20% CW and MARB and top 25% REA. His dam and grandam rank among my favorites for their ability to combine power and pretty in a beautiful maternal package.



Stockmen's Source Beef Bulls

180 CFCC MANDINGO 403M

ASA 4487477 | 25% SIM, 75% ANGUS | BD 8/20/24

HOM. BLACK | HOM. POLLED

SAV RAINFALL 6847	CED	BW	WW	YW
SQUARE B TRUE NORTH 8053	17.5	-3.7	71	120
ELBANNA OF CONANGA 1210	CE Score	MCE	Milk	STAY
CFCC GODFATHER 916G	4★	10.3	29.7	15.5
CFCC BLACKBIRD 254K	CW	Marb.	RE	Fat
426B	49.3	.59	.59	.017
TNT TANKER U263				

Star faced bull that is long and athletic, sure to cover a lot of heifers. Top 10% CE EPD and 67# actual BW. But more than just a heifer bull with a 104NR, 98YR and projections for top 20% CW top 25% MARB. Born to a 2 YO, but his grandam was productive here past 10 YO.



181 JGM MAGNETO 4952M

ASA 4479680 | 31% SIM, 69% ANGUS | BD 4/13/24

RED | HOM. POLLED | SC: 44 CM

BIEBER CL ATOMIC C218	CED	BW	WW	YW
BIEBER CL ENERGIZE F121	3.4	1.3	84.5	137.1
BIEBER CL ADELLE 575D	CE Score	MCE	Milk	STAY
BROWN PREMIER	★	3.4	26.7	7.1
JGM MRS PERMIER 703	CW	Marb.	RE	Fat
LLL RED SIMANGUS	37.9	.16	.61	-.033
LLL MS SIMANGUS				

We were strong on heifer calves last year from our red cows, but are extremely pleased to lead off with this magnum sized Energize son that should be easy to find. Outstanding growth performance from an 8 year old no miss cow. Will be one of the heaviest bulls of the day.

182 JGM MEGAWATT 4957M

ASA 4479689 | 12% SIM, 88% ANGUS | BD 4/20/24

RED | HOM. POLLED | SC: 38 CM

BIEBER CL ATOMIC C218	CED	BW	WW	YW
BIEBER CL ENERGIZE F121	9.5	-3.2	71.8	121.3
BIEBER CL ADELLE 575D	CE Score	MCE	Milk	STAY
FINAL ANSWER	★	5.6	26.6	8.2
JGM MRS FINAL ANSWER 904	CW	Marb.	RE	Fat
LLL RED SIMANGUS	22.4	.35	.38	.011
LLL MS SIMANGUS				

Megawatt has the Energize look and docility in a package that is upfronted and well built with feet that hit squarely under the corners of his skeleton. Individual WW ratio of 107 and YW ratio of 101.

183 JGM MAHOGANY 4971M

ASA 4493160 | 53% SIM, 47% ANGUS | BD 5/3/24

RED | HOM. POLLED | SC: 39 CM

WEDEL CORNERSTONE 0244H	CED	BW	WW	YW
ALC BANKROLL K46	5	1.2	79.6	126.2
WS RED DAWN D150	CE Score	MCE	Milk	STAY
LLL MS SIRE SA	★	5.2	18.7	7.4
JGM MRS RED 4198	CW	Marb.	RE	Fat
LLL RED SIMANGUS	23.3	.37	.70	-.046
LLL MS SIMANGUS				

Gifted with good genetics from our selection of the composite bulls at the Leland Red Angus sale a couple years ago, Mahogany is masculine, opened up through his center body, and powerfully muscled in his stifle.



184 CFCC HDC MORTEE 441M

ASA 4487515 | 50% SIM, 50% ANGUS | BD 8/31/24

RED | HOM. POLLED

BIEBER SPARTACUS A193	CED	BW	WW	YW
BIEBER SPARTAN 3639	20.1	-4.8	65.5	93.2
BIEBER RENEE 477A	CE Score	MCE	Milk	STAY
HOOKS TRINITY 9T	4★	8.1	27.2	16.5
CFCC HULETTE 754E	CW	Marb.	RE	Fat
158R	12.2	.25	.10	.008
OCC JETFLECK 135N				

This one belongs to Henry. I gave the kids their pick of the cows a few years back and he picked a great one. She is a legit low BW cow recording 6 @ 89 BR on a 362 day interval, having stuck to A.I. every year. The sire of this bull is an ABS stud bull known for making them stout and attractive. Elite top 3% CE.



4+



Custom Cattle Feeding

- *Growing, finishing, and heifer development programs tailored to your needs – including winter corn stalk grazing program*
- *Outstanding feedstuff & packer access*
- *Good mounds, slope and pen maintenance*
- *Consulting nutritionist and veterinarian in close contact*
- *Grain banking, cattle procurement, risk-management and partnerships available*

Jake Wolfinger
(740) 438-5479

Jeremy Martin
(308) 325-3287

43145 Rd 758
Lexington, NE 68850



2026 Stockmen's Source Catalog
Design & Cover Photos by:

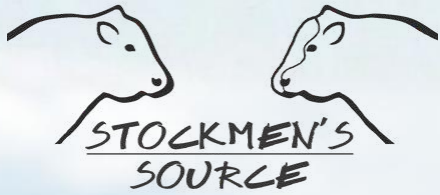


COOL MORNING
MEDIA LLC

BRANDY JAMERMAN
308-520-9032
COOLMORNINGMC@GMAIL.COM
COOLMORNINGMEDIA.COM

CRAFTED FOR
COWBOY CULTURE

BUSINESS BRANDING MARKETING SOCIAL MEDIA
PHOTOGRAPHY VIDEOGRAPHY WEBSITES



11144 W. Medicine Rd.
Wellfleet, NE 69170

